



SASK ROYAL

CHAROLAIS SALE

THURSDAY, JUNE 6, 2024

MOOSE JAW EXHIBITION CONVENTION CENTRE

WELCOME

A new location with the same great quality in terms of lots and the Charolais fellowship that will be on offer! Running in conjunction with the Canadian Charolais AGM, the Breeder School, and Fundraising action; the third anniversary of the Sask Royal promises to be the most exciting yet. Please make plans to join us at 5:30 for cocktails and supper at 6 prior to the sale.

The initial plans for the Sask Royal was to rekindle a past Charolais tradition and revive it for modern times. What it has become now is a true celebration of the Charolais breed, and a place to gather for fellowship in the early days of Summer. And of course, as a marketplace for superior white genetics that are rare, hard to come by, and can propel even the most established of operations into a new bracket of elite.

Starting off the catalogue this year is a collection of “pick” lots for both heifer calves and bred heifers from breeding operations that consistently supply the industry with high quality sires and females, and truly offer unlimited opportunity. The genetic lots are cutting-edge and feature rare and hard to come by options that are only available in a sale such as this.

Plan to be with us June 6 in Moose Jaw, and as always please be in touch with any of the T Bar Team with any questions or assistance.

CHRIS POLEY - SHANE MICHELSON - BEN WRIGHT - LEVI RIMKE



CHRIS 306-220-5006



SHANE 403-363-9973



BEN 519-374-3335



LEVI 204-851-4515

AUCTIONEER

CHRIS POLEY

306-220-5006

SALE STAFF

BEN WRIGHT

519-374-3335

SHANE MICHELSON

403-363-9973

LEVI RIMKE

204-851-4515

ONLINE BIDDING

DLMS.CA

MARK SHOLOGAN

780-699-5082

ACCOMODATIONS

MOOSE JAW HOLIDAY INN

EXPRESS

844-209-1661

NOTE

Package of three embryos guarantees one pregnancy.

Package of 4-6 embryos guarantees two pregnancies.

Guarantees are contingent on being implanted by a certified technician.



SASK ROYAL

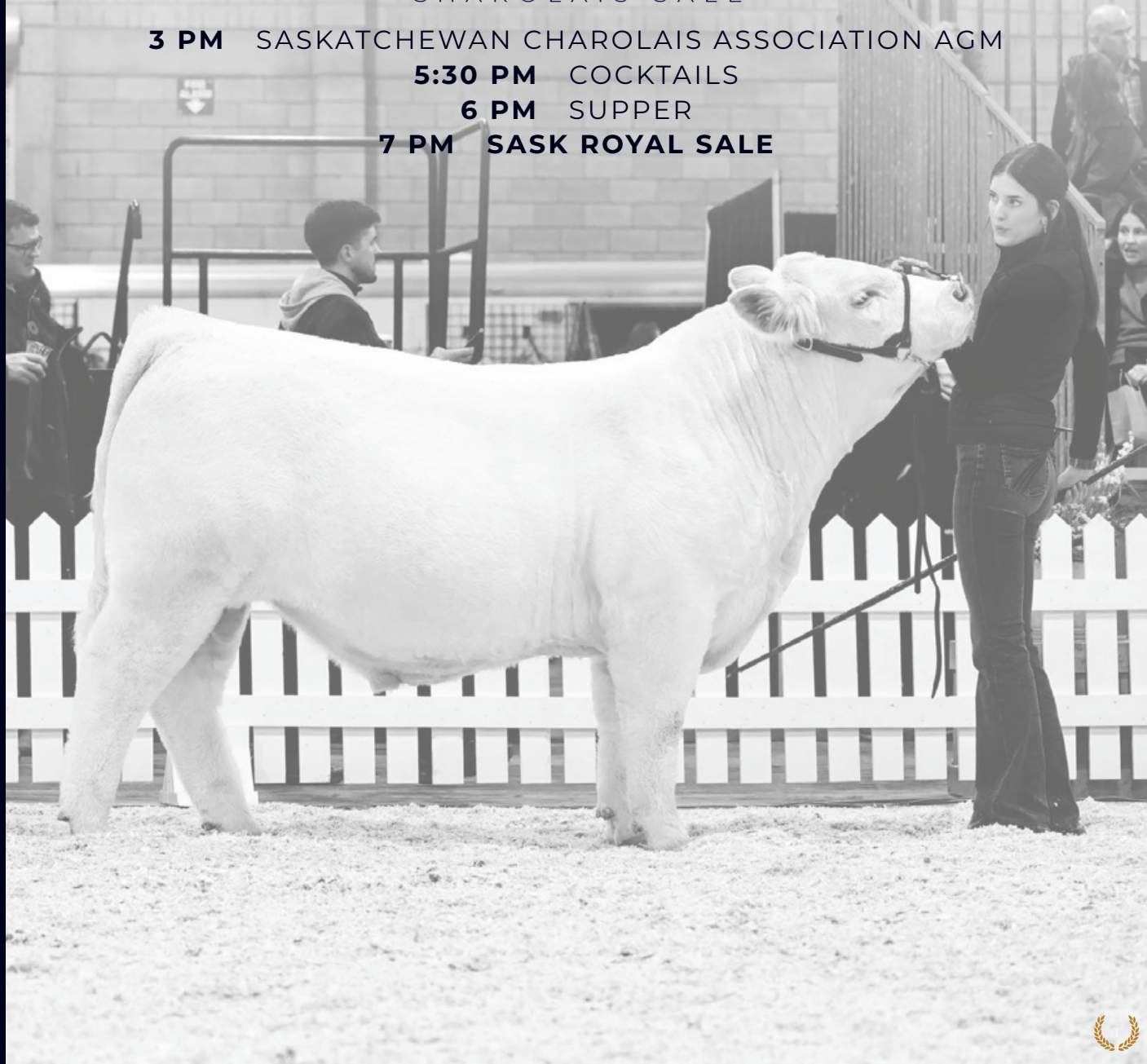
CHAROLAIS SALE

3 PM SASKATCHEWAN CHAROLAIS ASSOCIATION AGM

5:30 PM COCKTAILS

6 PM SUPPER

7 PM SASK ROYAL SALE



**GOVERNOR** SIRE OF HEIFERS**D&D COVERGIRL** DAUGHTER
AVAILABLE**COVERGIRL** CWA CHAMP, MA-
TERNAL SISTER AVAILABLE**STARSTRUCK 135J** DAUGHTER
AVAILABLE**STARSTRUCK 409B** MANY
DESCENDANTS AVAILABLE

1 PICK OF THE SERHIENKO CATTLE CO. LT GOVERNOR HEIFER CALVES

Blending new age, elite performance with time tested, world renowned cow families.

Governor is an up-and-coming performance game changer. His numbers stack him up incredibly well, ranking in the top 1% of the breed in both the USA and Canada for WW and YW, while he himself possesses and transmits a stamp of phenotypic perfection consistently to his progeny. Blending this futuristic and modern herd sire to our donor battery of generationally established cow families that provide functionality and power in a maternally flawless package has produced a heifer calf crop that are gorgeous in their construction and packed with substance.

CONSIGNED BY SERHIENKO CATTLE CO.

**J BAR W TOP** SIRE OF HEIFERS**JERICO** SIRE OF HEIFERS**LUNCH MONEY** SIRE OF HEIFERS**TRANSPORT** SIRE OF HEIFERS

"QUALITY IN QUANTITY"

2 PICK OF PLEASANT DAWN 2024 HEIFER CALVES

Pleasant Dawn is pleased to offer the pick of our 2024 heifer calfs. You will find calving ease to performance with maternal and structural soundness in these calves and great epds. There will be embryo calves from Fink Vanity x PD Chisum, Fink Vanity x Harms Lunch money to calves from Lt Authority Lt Governor SilverStream Padra, Pleasant Dawn Transport 202k WhiteMeadow Hank 80h Pleasant Dawn Mobile 103f JMAR Jericho, JBARW MR Top Gun 1311, Pleasant Dawn Lava 173k, and HWY Khrome 12K. From dark red to white we will have something for you. **We will work with you on your purchase and would like the pick done by Nov 1st.**

CONSIGNED BY PLEASANT DAWN CHAROLAIS

**HEATWAVE 7H** SIRE OF HEIFERS**COMPADRE 13H** SIRE OF HEIFERS**HIGH ROAD** SIRE OF HEIFERS**WOOD RIVER PRINCESS 13Y**

3 PICK OF THE WOOD RIVER 2023 BRED HEIFERS OR 2024 HEIFER CALVES

Sires of the bred females on offer are Diamond W Heatwave 7H, JWX High Road 308H, Wood River Varro 18E, Brimner Bull 207J, and Elder's Compadre 13H. All heifers were exposed to JWX Kingman 272K (a son of LT Ransom) on April 1. The heifer calves include progeny of these outstanding herd sires: Diamond W Heatwave 7H, JWX High Road 308H, Brimner Bull 207J, and JWX Kingman 272K. Wood River Charolais have been breeding Charolais cattle for 49 years.

Pick to be made by December 31, 2024.

CONSIGNED BY WOOD RIVER CHAROLAIS



PROFOUND PROGENY AND SERVICES



WINCHESTER SERVICES



LAIRD SERVICES



ZEUS AND DAM SERVICES



LEGEND PROGENY



A SAMPLE OF HEIFERS ON OFFER



4 PICK OF THE LAKEVIEW CHAROLAIS BRED HEIFERS

We are pleased to be offering a pick of our bred heifers at the Sask Royal sale. We selected this group of 45 heifers out of over 100 head, and feel they represent what we look for in our females. We believe these are an outstanding group of functional females who will be productive and successful in any operation. Sires of these females include Circle Cee Legend, SVY Profound, SOS Apex, Pro Char Jamieson, to name a few. Heifers were AI'd April 24 to Pro-Char Winchester, SVY Profound and Sparrow's Laird 306L. These females will be exposed May 8th to Lakeview Zeus 1L or Sparrow's Laird. **Heifers will be ultrasounded, selection to be made by Aug 31st.**

CONSIGNED BY LAKEVIEW CHAROLAIS





5 BALAMORE DAHLIA 46D

SELLING 50% EMBRYO INTEREST AND 30% NET SALE PRICE ON LIVE CALVES

PFC419400 | BLM 46D | JANUARY 09 2016

LT BLUEGRASS 4017 P HTA VEGAS 134Y

LT LEDGER 0332 P JSR WESC APHRODITE 51B

LT BRENDA 6120 PLD JSR APHRODITE 49X

BW	WW	YW	MILK
1.9	48	106	17

5A COUNTDOWN X DAHLIA

ONE PACKAGE OF THREE EMBRYOS

BROBERG'S RSOURCE D20 LT LEDGER 0332 P

LT COUNTDOWN 9712 PLD BALAMORE DAHLIA 46D

LT MADELINE 6113 PLD JSR WESC APHRODITE 51B

BW	WW	YW	MILK
-2.2	63	122	23

5B GOVERNOR X DAHLIA

ONE PACKAGE OF THREE EMBRYOS

LT BADGE 9184 PLD LT LEDGER 0332 P

LT GOVERNOR 1560 PLD BALAMORE DAHLIA 46D

LT SYBILLE 6476 PLD JSR WESC APHRODITE 51B

BW	WW	YW	MILK
2.6	78	141	16

We knew we bought Dahlia from the first ever Shoreline Female Sale she had potential to do big things as our new donor. The consistency in her calves, the sheer power and mass she has works so well with so many matings. We left her open to flush last summer, to get an inventory of embryos. With her averaging 12 embryos per IVF cycle, our limited cow numbers and the demand for her genetics brings us to selling half interest of her. We feel this brings a unique opportunity for the new owner to flush to their own bulls. The females will be replacements. The bulls will top your pen. Maybe even by incorporating a fresh cow pedigree, a bull you raise might even be what you are looking for in your own program. There are so many different ways to go about utilizing this great cow. The pounds are still paying. We always talk about the commercial bulls she will raise, but over the past three years none of her progeny have made it into the commercial cattlemen's hands. No matter which way you analyze and utilize Dahlia, there is big time return on investment here.

CONSIGNED BY CAY'S CATTLE AND GLEN & SUE MILLS

GREAT VILLAGE \$34,000 SON TO LINDSKOV



BOURBON SIRE OF EMBRYOS



DAUGHTER OF 314H, FULL SISTER TO EMBRYOS

6 STEPLER MISS 314H

THE RIGHT TO FLUSH

PFC817458 | DSY 314H | JANUARY 27 2020

TR PZC MR TURTON 0794 ET SPARROWS SEMINOLE 927W
CAYS FULL HOUSE 22E **STEPLER MISS 125B**
PRAIRIE COVE MISS 309A STEPLER ANNE LEE 97R

BW	WW	YW	MILK
4.2	48	94	25

7 BOURBON X MISS 314H

ONE PACKAGE OF FOUR EMBRYOS

CCC WC REDEMPTION 7143 PLD ET CAYS FULL HOUSE 22E
PCC BOURBON 118J **STEPLER MISS 314H**
BRCHE BERKLY ANN 8507 PLD ET STEPLER MISS 125B

BW	WW	YW	MILK
1.0	54	96	24

When we came across 314H in the Steppler Farms 2023 Female Sale, she struck us hard as being exactly what the Charolais breed needs in this day and age. She is big, bold and powerful in her makeup, a balanced female that still has all the bells and whistles; big topped, structurally correct, extra muscle and still feminine. She is a true donor and a true breeding piece.

CONSIGNED BY C2 CHAROLAIS, SUGARLOAF CHAROLAIS, AND STEPLER FARMS



RANSOM SIRE OF EMBRYOS

8 RANSOM X MISS 314H

PREGNANT RECIPIENT

LT JOURNEY 5208 PLD	RBM KEYSTONE H41
LT RANSOM 8644	MISS PRAIRIE COVE 342L
LT SHEILA 337 PLD	MISS PRAIRIE COVE 806F

BW	WW	YW	MILK
-0.4	67	123	22

When we saw 342L at the Superstar sale this past winter we thought she was something special and were lucky enough to bring her home. A heifer that we wanted to fast track her genetics in our herd. Having a couple very successful flushes we decided we could part with a pregnant recip. Bull or heifer a lot of potential on this mating!

CONSIGNED BY W2 FARMS.



MISS CRUSH DAM OF EMBRYOS



RUGER FULL BROTHER TO MISS CRUSH



LIMITLESS PLAYER'S CLUB CHAMP

9 LIMITLESS X MISS CRUSH

PREGNANT RECIPIENT

PCC INNOVATION 123J LT RANSOM 8644
HRJ LIMITLESS 303L **WGD MISS CRUSH 20J**
HRJ MISS PARIS 927G WGD THE CRUSH 14D

Miss Crush x Limitless is a nice combination of stout made cattle with eye appeal and muscle expression. Ransom females are going to leave a lasting impression in this breed for their superior udder quality, docile nature, and maternal strength. Limitless sire is just writing his first chapter and it's off to a real nice start. Step into a unique pedigree and raise a herdbull or a donor type female. **Pregnant recip is due early January.**
CONSIGNED BY WILGENBUSCH CHAROLAIS.

BW	WW	YW	MILK
0.1	55	104	23



HISTORIC SIRE OF EMBRYOS

10 HISTORIC X PCC 748E

TWO PACKAGES OF THREE EMBRYOS

LT COUNTDOWN 9712 PLD ZKCC GAME ON 266Z
SVY HISTORIC 241K **MISS PRAIRIE COVE 748E**
 M6 MS NEW GERMAINE 484 P MISS PRAIRIE COVE 407B

BW	WW	YW	MILK
-0.4	66	126	24

11 KEYSTONE X PCC 748E

TWO PACKAGES OF THREE EMBRYOS

LT RUSHMORE 8060 PLD ZKCC GAME ON 266Z
RBM KEYSTONE H41 **MISS PRAIRIE COVE 748E**
 RBM JASMINE F251 MISS PRAIRIE COVE 407B

BW	WW	YW	MILK
-0.2	63	111	22

Here's your opportunity to purchase some elite embryos out of one of the top producing cows in the breed. PCC 748E is a donor cow extraordinaire that's Homo Polled, and PA Free. She has had a very successful show career with many banners under her belt, and perhaps most impressively is seeing her progeny doing the same, being the dam of the 2023 CWA Champion Bull Kickstart and the 2023 Reserve Champion Female. Her mating to Historic will surely be just that, with him causing waves this Fall at the Superstar sale which saw semen average \$1380/straw. He is full of power and dimension with incredible phenotype and exceptional numbers. Keystone is an extremely popular option for combining carcass merit and EPDs with ideal phenotype.

CONSIGNED BY GR SIMMENTALS AND EXL CHAROLAIS



12

COUNTDOWN X DESIRAE

13

MAYFIELD X DESIRAE

ONE PACKAGE OF THREE OR FIVE EMBRYOS

BROBERG'S RSOURCE D20
LT COUNTDOWN 9712 PLD
LT MADELINE 6113 PLD

WINN MANS CHAVEZ 826Y
SOS DESIRAE PLD 7F
PZC TR DESIRAE 012

BW	WW	YW	MILK
-2.8	72	126	28

With the genetic entries in the Sask Royal being some of the most intriguing and sought after genetics to be offered in a calendar year, so in turn you need to bring the goods. SOS Desirae 7F is a female that brings the Midas touch to every mating, having a very distinguished production career. Producing high sellers, on both sides of the coin, bulls and females. Producing an \$85,000, \$55,000 and a \$35,000 to name a few, in doing so proving the quality of the factory and that the Desirae cow family is one to put your trust in. What can be said about Mayfield that isn't already common knowledge. The CWA Supreme Champion and US National Champion has caused a fire storm both North and South of the border with highly exclusive semen opportunities only increasing in value. The LT Countdown 9712 PLD mating is the definition of curve bender. Countdown having sired some of the most talked about progeny in recent years both in Canada and the United States. He is a sire to be utilizing. 7F has the phenotype, the pedigree and the production history to catapult any program into the future. These matings could be the next generation in the famed Desirae cow family.

CONSIGNED BY ALTON CENTURY FARMS LTD.

ONE PACKAGE OF THREE OR FIVE EMBRYOS

CCC WC RESOURCE 417 P
SVY MAYFIELD 30H
SVY MIA 424B

WINN MANS CHAVEZ 826Y
SOS DESIRAE PLD 7F
PZC TR DESIRAE 012

BW	WW	YW	MILK
1.3	69	112	28

**KICKSTART** SIRE OF EMBRYOS

14 KICKSTART X GABBY

ONE PACKAGE OF THREE EMBRYOS

SOS APEX PLD 139F STEPPLER JACK BLACK 387F
SOS KICKSTART PLD 825K STEPPLER GABBY 546H
 MISS PRAIRIE COVE 748E STEPPLER MISS 124E

BW	WW	YW	MILK
-0.5	56	108	21

What a great opportunity to access this tremendous breeding piece! Gabby was the Agribition high selling cow in 2022 to Chad and Stacey Mathies, and Kickstart of course being the 2023 Agribition Champion Bull. Gabby is being managed at Stepler Farms, and has established an excellent production record with a tremendous Diamond back bull calf, and of course many will remember her first calf Timber who showed alongside her. Timber carried on to the the President's Classic Charolais Champion Bull and our 2023 high seller in the bull sale for \$18,000 to Highway 21 and Letniak Charolais. This mating between Kickstart and Gabby will result in exactly what the Charolais breed is known for - muscle, performance, and hair!!

CONSIGNED BY STEPPLER FARMS AND CHAD & STACEY MATHIES



FULL SISTER TO LOT X AT DUDGEON-SNOBELEN

15A RESOURCE X WYNONA

ONE PACKAGE OF THREE EMBRYOS

LT RUSHMORE 8060 PLD TR PZC MR TURTON 0794 ET
CCC WC RESOURCE 417 P MVY WYNONA 62F
WC CCC BLUE GIRL 1528 P MVY WYNONA 95W

15B COUNTDOWN X WYNONA

ONE PACKAGE OF THREE EMBRYOS

BROBERG'S RSOURCE D20 TR PZC MR TURTON 0794 ET
LT COUNTDOWN 9712 PLD MVY WYNONA 62F
LT MADELINE 6113 PLD MVY WYNONA 95W

BW	WW	YW	MILK
-0.4	58	100	29

BW	WW	YW	MILK
-2.9	63	115	25

The Wynona cow family are solid, big middled cattle with extra length of spine. The Resource cross has worked very well with them being very feminine and great uddered cows. The Countdown cross will be no different. MVY Backdraft was sired by MVY Governor who's dam is a Wynona

CONSIGNED BY MCAVOY CHAROLAIS.

CHOICE LOT



BACKWATER JACK SIRE OF EMBRYOS

16A COUNTDOWN X TANYA

ONE PACKAGE OF THREE EMBRYOS

BROBERG'S RSOURCE D20 LT LEDGER 0332 P
LT COUNTDOWN 9712 PLD **MVY TANYA 45D**
 LT MADELINE 6113 PLD BAR EW TANYA 13T

BW	WW	YW	MILK
-4.9	64	114	24

16B BACKWATER JACK X TANYA

ONE PACKAGE OF THREE EMBRYOS

PVF RIDGE 7142 LT LEDGER 0332 P
WIA BACKWATER JACK 060 P **MVY TANYA 45D**
 BRCHE TR DORY 6501 BAR EW TANYA 13T

BW	WW	YW	MILK
-1.9	54	97	24

The Tanya cow family has been great for us at McAvoy Charolais. 45D is a super easy doing great uddered Ledger daughter. The choice between either matings is going to be exciting to watch mature. The 13T cow is the mother of MVY Xolorer 21X and the grand dam of MVY Caous 64D who won the Supreme in Toronto.

CONSIGNED BY MCAVOY CHAROLAIS.

CHOICE LOT



JAVA 35K FULL SIB TO EMBRYOS



515C SIRE OF EMBRYOS

17 CROWD FAVOURITE X JAVA

ONE PACKAGE OF THREE EMBRYOS

SPARROWS KINGSTON 139Y LAE LAND BARON 232Z
HRJ CROWD FAVOURITE 515C **SKW JAVA 140C**
 HRJ MISS PARIS 7S SKW JAVA 85X

BW	WW	YW	MILK
3.7	64	121	33

We have never opened the vault on any of our frozen genetics so what better way than taking some straight out of the heart of the heard! The Java 140C has done just about done everything in our herd. From producing Herd Bulls to producing females that are making their mark on the Industry. The Java 140C X Crowd Favourite Embryos caught a few peoples attention this fall when our feature female – HKS Java 35K came through the ring at the Superstar 2023 Sale and turned heads. If you are looking for a no nonsense cow family that will raise some good ones – look no further!

CONSIGNED BY HOWE COULEE CHAROLAIS



18 SVY MAYFIELD 30H

FOUR PACKAGES OF FIVE UNITS

PMC792306 | SVY 30H | MARCH 2 2020

LT RUSHMORE 8060 PLD D R REVELATION 467
CCC WC RESOURCE 417 P SVY MIA 424B
 WC CCC BLUE GIRL 1528 P EXL MIA 230M

BW	WW	YW	MILK
1.9	72	110	30

The international champion himself. The first public opportunity to get Mayfield semen in Canada. With more Mayfield calves than ever on the ground at different operations, the reports have been excellent. Mayfield semen has taken the US auctions by storm. The Power and dimension with his look and softness are carrying true in the progeny. Something different here for you to flush and breed cows to. Getting to use a bull that won shows and was admired on both sides of the border will only add to the value.

CONSIGNED BY CAY'S CATTLE AND SERHIENKO CATTLE CO.



19 LT REMINGTON 0038 PLD

FIVE PACKAGES OF TEN UNITS

M941957 | 0038 | FEBRUARY 22, 2020

LT RUSHMORE 8060 PLD LT PATRIOT 4004 PLD
LT AFFINITY 6221 PLD LT GRACIE 8222 PLD
LT ATHENA 1247 LT GRACIE 1048 PLD

BW	WW	YW	MILK
-8.5	39	99	30

Here is your chance at some proven yet fresh Genetics to the Canadian Charolais scene. We were able to secure the Canadian rights to LT Remington 0038 this past year. LT Remington boasts CE & BW epds in the top 2% & 1% of the breed. He has been successfully used on thousands of commercial and purebred heifers at Lindskov's in South Dakota with great results. We feel he is not only a calving ease bull but will also provide enough performance to sire bull sale worthy bulls as well as retention worthy females. Backed by a solid pedigree. Actual BW of 72 lbs and actual WW of 760 lbs. He is homozygous polled and PA Free.

CONSIGNED BY FOOTPRINT FARMS



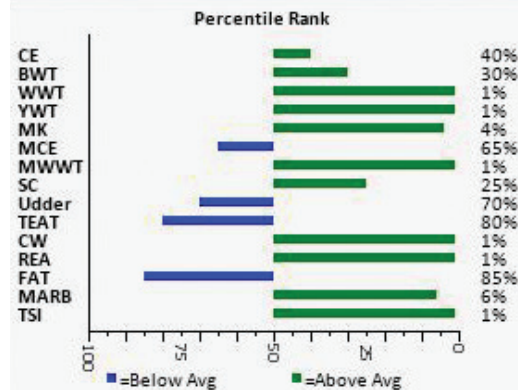
20 WC ENCOMPASS 0507 P

FIVE PACKAGES OF FIVE UNITS

M960657 | 0507 | SEPTEMBER 2, 2020

LT RUSHMORE 8060 PLD WC MILESTONE 5223 P
WC INFERNO 6561 P **WC DUTCHESS 7516 P**
WC ASTA 0505 P WC DUTCHESS 3517 P

BW	WW	YW	MILK
-2.4	96	168	37



WC Encompass is a bull when you see in person is hard to fault, very good footed, well muscled, and has some length and volume to him. An added bonus is he is HOMO Polled, PA free and 8 of his EPDs are in the top 6 percentile rank. He is a bull that Wright's speak very highly of and are very excited about the calves they have on the ground in Missouri.

CONSIGNED BY W2 FARMS



21 DC/CRJ TANK E108 P

FIVE PACKAGES OF TEN UNITS

PMC791452 | FEBRUARY 08 2017

BHD ZEUS X3041 SM ZYLEN A849 S
BHD PERSEUS B65 P CRJ MS ZYLEN C1587
BHD MS ZEN Z27 BHD MS TRADEMARK Z38

What more can be said about the Tank bull. One bull in the breed you can legitimately call a curve bender. When you talk production and calving ease this bull is at the forefront of the conversation. Use him on heifers, use him on donor cows, he does not disappoint. His track record is tough to duplicate and one of the most profitable bulls of his generation.

CONSIGNED BY HUNTER CHAROLAIS AND WILGENBUSCH CHAROLAIS.

BW	WW	YW	MILK
-3.1	66	149	38



22 LT LEDGER 0332 P

TWO PACKAGES OF FIVE UNITS

PMC343168 | 0332 | APRIL 03 2010

LT ASSERTION 1277P LT RIO BRAVO 3181 P
LT BLUEGRASS 4017 P LT BRENDA 6120 PLD
LT PEARL'S BREEZE 2236 P LT BRENDA'S EASE 3055PLD

BW	WW	YW	MILK
-2.5	59	116	15

Ledger has been one of the most recognizable Charolais bulls in recent history. With over 1000 registered progeny in Canada and 7700+ progeny in the States, Ledger is one of the most widely used bulls in the last 14 years. His sons consistently topped sales across the country and his daughters have been front pasture females for years. Ledger stamped his progeny with thickness, depth of body, great testicular development and excellent performance. His semen isn't easy to find, take advantage of his proven genetics for your cow herd.

CONSIGNED BY HUNTER CHAROLAIS



23 SOS APEX PLD 139F

THREE PACKAGES OF FIVE UNITS | ONE PACKAGE OF THREE

PMC754210 | SOS 139F | FEBRUARY 11 2018

LT BLUEGRASS 4017 P MERIT ROUNDUP 9508W
LT LEDGER 0332 P TMJF BERYLE 447B
 LT BRENDA 6120 PLD TMJF U-CALLED 198U

BW	WW	YW	MILK
-2.9	76	139	6

Apex is a hugely prolific sire in the Charolais breed, not only for being the champion of the inaugural \$50,000 Player's Club in 2018, but for continuing the hype and momentum into an excellent production record. Apex being the sire of the \$40,000 SOS Pandemic and the 2023 CWA Grand Champion Bull SOS Kickstart, in addition to many division winners and high sellers throughout the breed. Apex combines incredible performance with calvin ease, ranking in the top 10% of the breed for CE and BW, along with a top 5% and 4% rank for WW and YW respectively.

CONSIGNED BY HUNTER CHAROLAIS



24 M&M OUTSIDER 4003 PLD

TWO PACKAGES OF TWO UNITS

PMC749963 | APRIL 01 2014

LT SILVER DISTANCE 5342P	M&M RAPTOR 8122 PLD
LT LONG DISTANCE 9001 PLD	M&M MS CARBINE 1567 PLD
LT BELLE 7026 P	MS COOLEY JPOT 1107N9

A chance to utilize one of the most impactful sires this breed has ever witnessed. Outsider is king for producing females with superior phenotypes that are successful in and out of the showring. With a long list of progeny already making their own mark, it only makes sense to sell this semen in 2 packages of 2 straws for anybody looking to flush to this legendary sire!

CONSIGNED BY HARCOURT CHAROLAIS

BW	WW	YW	MILK
-3.1	72	118	24



25 PLEASANTDAWN MOBILE103F

TWO PACKAGES OF FIVE UNITS

PMC745603 | TLJ 103F | JANUARY 31 2018

LT LANZA 1427 PLD	EATONS BIG BUD 10402 P
MAIN MAGICO LANZO 36D	PLEASANTDAWN LADY103D
MAIN COBB 261Z	PLEASANT DAWN BABE 102W

Valley's End Charolais purchased Mobile as a yearling bull at Pleasant Dawn's 2019 sale. We were looking for a bull that we could use on heifers and perform like a champ! 2024 marks 5 calf crops of Mobile progeny; the Mobile daughters are performing excellent raising their own calves and milking well. Each year we have SOLD OUT of Mobile son (many out of first calf heifers) and sons of Mobile daughters. Mobile has gifted our bull pen with tremendous growth, weaning to yearling, and added fertility. He is Homo Polled, PA Free, has an excellent foot and fantastic Canadian Genomic EPDs.

CONSIGNED BY VALLEY'S END CHAROLAIS.

BW	WW	YW	MILK
-2.0	64	132	26

TERMS:

The terms of the sale are cash or cheque, payable at par at the sale location. The right of property shall not pass until after settlement has been made; no invoicing on buyers in attendance unless previous arrangements have been made. Every animal sells to the highest bidder and in cases of disputes, the auctioneer's decision will be final. Announcements from the auction block will take precedence over the printed matter in the catalogue. Current exchange rates will be announced sale day. All monies are in Canadian funds.

CERTIFICATE OF REGISTRATION:

Each animal will carry papers issued by the Canadian Angus Association unless otherwise stated. A certificate of registry duly transferred will be furnished to the buyer for each animal after payment has been made.

PEDIGREE ESTIMATES:

Pedigree Estimates (PE) are created on the projected mating of the animal's sire and dam based on averages of the two, creating estimated values that do not hold the same accuracy of actual EPDs issued from the association and should be used as such.

HEALTH:

All animals in the sale have met all necessary health requirements.

GUARANTEE:

Each animal becomes the purchaser's risk immediately after the animal is sold. All animals in this sale will be sold under the terms and guarantees set forth by the Canadian Angus Association with regard to health, freedom from defects and from both reproductive and specific genetic unsoundness.

PREGNANCY INFORMATION:

All serviceable age females have been pregnancy examined by an accredited veterinarian, giving an estimated length of gestation. This estimated gestation period shall be used only as a guideline to calving and is not a guarantee of actual service.

LIABILITIES:

All persons attend the sale at their own risk. The seller, facility owner and sale manager assume no liability legal or otherwise, for any accidents that occur. It is understood that T Bar C Cattle Co. (2013) Ltd. is acting only as a medium between buyer and seller and is not responsible for any failure on the part of either party to live up to his obligations. Neither does T Bar C Cattle Co. (2013) Ltd. assume any financial obligations to collect or enforce collection of any monies between parties and any legal action that may in exceptional cases be taken must be between the buyer and the seller. T Bar C Cattle Co. (2013) Ltd. assumes no responsibility for any credit extended by the seller to the buyer. The buyer must look to the seller for fulfillment of all guarantees and representations made hereunder.

DELIVERY:

Every assistance will be given in getting your purchases home. Each animal becomes the risk of the purchaser as soon as sold.

PHONE, MAIL, WIRE BIDS:

Bidders unable to attend the sale may phone, wire or mail their bids and instructions to the sale manager, auctioneer or special representatives. Bids must be received in sufficient time prior to the sale.

INSURANCE:

We strongly recommend that insurance is purchased for full value.

ERRORS:

All announcements at sale time, written or oral, supersede any written material in the catalogue.

ALTON CENTURY FARMS LTD.

Blake, Julia, Eve & Garrett Alton
541 Sideroad 15N, Kincardine, ON N2Z 2X6
519-440-6580
baltoncenturyfarms@gmail.com

C2 CHAROLAIS

Jeff & Jackie Cavers
Box 237, La Riviere, MB R0G 1A0
204-242-4448
c2charolais@inethome.ca

CAYS CATTLE

Layne & Justin Cay
Box 155, Kinistino, SK S0J 1H0
Justin: 306-864-7893
Layne: 306-864-7307
rscay@sasktel.net

EXL CHAROLAIS

Jack & Martha Rairdan
Box 922, Stettler, AB T0C 2L0
403-742-3816
jrairdan@xplornet.com

FOOTPRINT FARMS

Travis Foot
Box 414, Esther, AB T0J 1H0
403-664-3167
footprintfarms1@gmail.com

GR SIMMENTALS

Gary & Leigh Rairdan
Box 285, Stettler, AB T0L 2L0
403-740-6823
gary@stettlerauction.ab.com

HARCOURT CHAROLAIS

Doug & Tammy Harcourt & Family
Box 637, Quill Lake, SK S0A 3E0
Doug: 306-383-7068
Justin: 306-383-7168
d.t.harcourt@sasktel.net

HUNTER CHAROLAIS

Doug & Marianne Hunter
Michael & Candace Hunter
Box 569, Riblin, MB R0L 1P0
Doug: 204-937-2531
Michael: 204-247-0301
huntchar@mymts.net

HOWE COULEE CHAROLAIS

Kelly & Julie-Anne Howe
74-325 4th Ave SW, Moose Jaw, SK S6H 5V2
306-313-2129
kelly_scott_howe@hotmail.com

LAKEVIEW CHAROLAIS

Rob & Heather Murray
Marwayne, AB
780-205-0912
lakeviewcharolais@hotmail.com

MCAVOY CHAROLAIS FARM

Mike & Dean McAvoy
Box 93, Arelee, SK S0K 0H0
306-237-4464
306-241-1975
mmcavoy@yourlink.ca

PLEASANT DAWN CHAROLAIS

Trent & Ashley Hatch
Box 132, Oak Lake, MB R0M 1P0
204-855-3078
trent.hatch@gmail.com

SERHIENKO CATTLE CO.

Dennis, Lissa, Katie & Cassidy Serhienko
Box 42, Maymont, SK S0M 1T0
306-389-7709
dl.serko@myaccess.ca

SUGARLOAF CHAROLAIS

Eric & Sheryle Anderson
Scott & Kayley Anderson
Box 38, Minburn, AB T0B 3B0
Scott: 780-787-0358
Eric: 780-593-2153
sugarloafcharolais@gmail.com

STEPPLER FARMS

Andre & Katie Stepler
Box 248, Miami, MB R0G 1H0
204-750-1951
steppleran@hotmail.com

VALLEY'S END CHAROLAIS

The Oram Family
Box Box 385, Central Butte, SK S0H 0T0
306-796-7725
valleysendcharolais@gmail.com

W2 CHAROLAIS

The Williams Family
Box 555, Lanigan, SK S0K 2M0
306-231-5415
mastonw@gmail.com

WILGENBUSCH CHAROLAIS

Craig & Tricia Wilgenbusch
Box 4, Halbrite, SK S0C 1H0
306-458-7482
ctwilgenbusch@hotmail.com

WOOD RIVER CHAROLAIS

Murray & Nicole Blake
Shane & Ann Blake
Box 86, McCord, SK S0H 2T0
Murray: 306-478-7088
Shane: 306-301-9140
woodrivercharolais@sasktel.net



**Return Undeliverable
Canadian Addresses To:**

**T Bar C Cattle Co. Ltd.
Box 2330
Warman, SK S0K 4S0**

