

NORDAL LIMOUSIN & ANGUS HERD PRODUCTION SALE



WEDNESDAY, DECEMBER 16, 2015 • SASKATOON LIVESTOCK SALES • SASKATOON, SK

LIMOUSIN • BLACK ANGUS • RED ANGUS

Nordal Limousin & Angus



The Garners

PO Box 85
Simpson, SK S0G 4M0
Rob - 306-946-7946
Justin - 306-946-7955
Jody - 306-946-9505
nordallimousin@sasktel.net
www.nordallimousin.com

On behalf of my family, I would like to welcome you to our sale offering. We take great pride and pleasure in bringing forth this offering of females from the heart of our program. Our sale line up consists of bred females from our Limousin, Red and Black Angus plus commercial herd. We have been breeding Limousin since 1973 and our family has always maintained a strong Angus influence as part of our herd since the early days of my father's herd. In the late nineties we began to add a few purebred Angus, with the increase in both Red and Black becoming more prominent in the last few years.

In recent years we increased our land base with the acquisition of the Lonesome Dove T/S property along with the cowherd, plus we have retained a large group of replacement females; over the past few years our herd has steadily increased. In 2015, we bred over 900 females and grassed a large group of yearling steers and heifers.

When I was tossing the idea around of having a female sale, I thought of having only purebreds from the Angus or Limousin or just the commercial side. I came to the conclusion that to show the strength in our cowherd, we will offer all bred females four years of age and under from each of the Limousin, Red Angus, Black Angus and the commercial herds. We have taken this group right out of the heart of our herd. This group of young females are sound functional females raised under ranch conditions.

The Bulls: The majority of the females in the sale offering are sired by our own herd bulls that walk and cover the ground that we expect their progeny to do. We have sourced some of the very best bulls in each breed to compliment the goal of having a sound, efficient and economical beef producing animal. It is very important to us that these sires produce progeny that first off are born easy with low birth and consistent calving ease. Sires that have large swings in calving ease are not tolerated, as we try to be as hands off in calving season as possible. Performance, milking ability and maternal traits are also of the utmost importance. As we have fed out large numbers of our own cattle over the years for the fed market and branded beef programs, carcass values and feedlot performance have been important to us. With this in mind, what also makes our group of sires unique is their high carcass values in ribeye, marbling, and lean meat yield. With the exception of our young sires, nearly all of our sires found in the pedigrees of the purebred females will have had progeny through our commercial herd, fed and harvested to understand how well these sires will produce in the commercial industry and throughout the beef chain. We are confident we have assembled a productive group of sires and their daughters will leave a lasting productive legacy. The service sires to the females are some of our newest genetic additions that follow in these footsteps.

The Cows: With the offering of this group of young females, their dams and older sisters remain. Our cowherd is run under ranch conditions. There is no difference in how we manage our purebred or commercial groups. We expect them to calve without a camera watching over them and be able to raise that calf and return ready for another year. Again consistency in calving ease along with sound functional maternal qualities are important. The cowherd is run late into the fall and winter on stock piled grass and swath grazing. Our cowherd has evolved into moderate framed efficient producers.

If you have any questions about the sale offering, we will be happy to take you through the group and discuss the females and their families' production history. Our sale staff is here to be of assistance, as they have been through our cowherd and the sale group. Thank you, Robbie, Cindy, Justin, Jessica Garner and Grant and Christina Michelson.



With great anticipation of December 16, the sale date of the Nordal Herd Production Sale, I welcome you to this auction of importance. For decades, the Nordal breeding program has been constantly evolving into one of the most comprehensive and significant breeding programs of pedigreed and commercial seedstock in North America. Under the watchful eye of Rob Garner, the herds of Limousin, Black and Red Angus and commercial breeding females have been in a constant state of improvement, and the absolute best are offered in this sale inventory. Rob has painstakingly hand-picked each and every individual from his vast herd. The young breeding females are just entering their prime productive years, and they will prove to be sound investments that will produce dividends for years to come.

The herd sires represented throughout the genetic fabric of the cow herd are largely Nordal-bred or owned. The commitment to the quality of the breeding program is obvious when appraising the great herd sires that have been purchased throughout North America to enhance the genetic profile of the female breeding base. Every effort has been made these many years to utilize only the best breeding bulls possible. It is vividly apparent when appraising the consistency and uniformity of the entire group even across breed lines.

The herd has been rigorously culled of the under achievers. The productivity and efficiency of the breeding unit has increased each year. By selecting the very best young females in the herd for this sale, the guesswork has been eliminated. The select group of sale females are as fault-free as possible, and the cow families that are represented will make even more history for purchasers-no matter the chosen breed.

If the true purpose of the seedstock breeder is to make each generation better than the last, then Rob Garner and the Nordal breeding program is making a great impact on the improvement of the entire beef cattle industry.

If I may assist anyone regarding information or selections from this great sale offering, please do not hesitate to contact me, or any of the representatives associated with the sale.

Best regards,
Keith Kisse

Herd Production Sale

12:30 PM • WEDNESDAY, DECEMBER 16, 2015 • SASKATOON LIVESTOCK SALES • SASKATOON, SK

- Dec. 15** *Schedule of Events*
Cattle available for viewing at Saskatoon Livestock Sales.
- Dec. 16** Cattle available for viewing.
11:00 AM Lunch
12:30 PM Welcome & Announcements
12:45 PM Sale
-Limousin
-Black Angus & Red Angus
-Commercial Females

Trucking

Saskatoon Livestock Sales is a major Western Canadian Livestock market.

For those needing assistance in arranging trucking, co-ordination of shipping will be done after the sale. Purchases may remain at Saskatoon Livestock Sales until immediate arrangements are met. For those requiring time for longer trucking arrangements, please contact Robbie or Sales Staff as purchase can be taken back to the farm. All cattle sell F.O.B. Saskatoon Livestock Sales.

Load out – after sale.

Health

All cattle are on the Pfizer Gold program and up to date on Black Leg. All calves will be boosted and Blackleg. All cattle will be poured with Ivermectin before sale.

All heifers, purebred and commercial will have their first dose of scour vaccine.

Sale Day Phone
306-382-8088

Auctioneer

Chris Poley - 306-220-5006

T Bar C Cattle Company

Ted Serhienko - 306-221-2711
Shane Michelson - 403-363-9973

Ringmen

Mark Stock - 306-357-8104
Ben Wright - 519-374-3335

Marketing Agents



KK Seedstock

Keith Kissee
Cell: 817-821-6263
Ph: 804-353-2220
kkseedstock@comcast.net



Bohrson Marketing Services

Phone: 403-940-3334
Scott Bohrson: 403-370-3010
bohrsonmarketing@gmail.com

EF AG Marketing

Eric Fazakas 306-552-6949

SLS

Saskatoon Livestock Sales

Mike Fleury – 306-222-9526
Harvey Welter – 306-227-8684
Alvin Busby – 306-221-0905

Offering

Limousin - 27 Bred Females, 1 Cow/Calf Pair
Black Angus - 56 Bred Females, 4 Cow/Calf Pairs
Red Angus Females - 45 Bred Females, 3 Cow/Calf Pairs
Commercial - 270 Bred Females

Online Bidding

Internet Bidding Available



Mark Shologan
780-554-4939

Insurance

Stockman's Insurance

Larry Toner
306-834-7652

Accommodations

Best Western Plus Blairmore Inn

306-242-2299

View the Catalogue Online

www.BuyAgro.com

Sale Management



4 3342 Millar Avenue, Saskatoon
Saskatchewan S7K 7G9
Ph: 306-933-4200 Fax: 306-934-0744
info@tbarc.com www.buyagro.com
Chris Poley: 306-220-5006 Ted Serhienko: 306-221-2711
Shane Michelson: 403-363-9973

From the Desk at T Bar...

December 16 will go down in history as a day of value added opportunity in the beef cattle industry. This unique event offers both the commercial and purebred sector, opportunities to select and enhance breeding operations with seed stock designed and bred for today's demanding market.

The Garners run a very large cattle and grain operation, developed over decades by family members with family values. At Nordal there is usually never enough daylight hours or too many days in a week; but success was achieved through dedication to the industry of agriculture. Along with that workload, Rob still took the time to attend every breed event possible, supporting his fellow breeders. If he couldn't be there...he was on the phone searching for new genetics.

The cow herd was built using the same criteria which founded Nordal...the strength of family values. At this event, Rob offers top young females out of leading cow families ...Black Angus, Red Angus and Limousin... making this a unique and rare opportunity for fellow breeders to start new cow families of their own.

The commercial females have been selected from the core of the herd ...young and uniform, with years of productivity. The commercial cow herd was built and designed for profit, right from giving birth to leaving the feedlot. Nordal is one of few purebred seed stock operations that finish their steers; thus Rob Garner knows what it takes in selecting sires...they use all the tools available!

Plan to be with us on December 16th in Saskatoon for "livestock opportunity day!" There is replacement stock for any operation and any budget.

If we at T Bar C may be of any assistance, prior to or sale day, feel free to give Shane, Ted or myself a call, as we would be pleased to assist you with your selections in a confidential manner.

See you at Nordal,
Chris Poley





Lot 1

1 - 71Y

Nordal 7S Savannah 71Y

RGA 71Y CPF0216520 Mar. 28, 2011 Female

KRMC OUTCROSS 192G
HIGHLAND LANDMINE
POLLED EVE 109C

CARROUSELS PURE POWER
EXE SAVANNAH
EXE POLLED LOLO

LVLS POLLED BLACK JACK
HOLJO 103
WULFS RAMBLER 8400X
RDJM MISS EMILY 01A
GPF BLAQUE RULON
TUBB FIRST CLASS 666F
ROYAL DELIVERANCE
ATJ BLUE-JEAN

A daughter of Landmine who has done an outstanding job for us over the years; continually siring sons and daughters that have been at the top of each and every calf crop for calving ease, performance and sound structure. 71Y is one of the most impressive daughters of Landmine, she is sound structured with an ideal udder placement. **Exposed to TMCK Westmoreland from May 23 to June 23; then to Hillview Zephyr from June 25 to August 1, 2015.**

Homozygous Polled • Black BW: 80 lbs. WW: 687 lbs. YW: 978 lbs.

EPDs	CED	BW	WW	YW	MK	TM	CEM
	6	1.7	61	84	22	52	6

1A - 73C

Nordal 7S Callita 73C

RGA 73C CPF4077991 Apr. 6, 2015 Female

SIRE: TMCK Westmoreland 889X

Homozygous Polled • Black BW: 80 lbs

An ideal model of her mother with the added influence of Westmoreland. This 2015 model is perfect in her design and genetic makeup. One of our top young prospects of our entire 2015 calf crop.

EPDs	CED	BW	WW	YW	MK	TM	CEM
	6	1.9	70	100	26	60	6



Lot 3

2 - 56Y

Nordal Your Choice

RGA 56Y CPF4077721 Apr. 2, 2011 Female

KRMC OUTCROSS 192G
HIGHLAND LANDMINE
POLLED EVE 109C

LVLS POLLED BLACK JACK
HOLJO 103
WULFS RAMBLER 8400X
RDJM MISS EMILY 01A
LVLS SECRET WEAPON 4408K
AUTO KYRIA 232K
COLE FIRST DOWN 46D
COLE 92G

AUTO DOLLAR GENERAL 122R
COLE MISS GENERAL 852U
COLE 929J

An impressive daughter of Landmine. She is smooth made and fault free in her udder and excels in her maternal traits. Her dam is a daughter of Dollar General with the influence of First Down. Sister sells as Lot 16 (RGA 752A). Very correct made and sound structured. Top 4% of breed for milk. **Exposed to TMCK Westmoreland from May 23 to June 23; then to Hillview Zephyr from June 25 to August 1, 2015.**

Homozygous Polled • Homozygous Black BW: 78 lbs. WW: 641 lbs. YW: 832 lbs.

EPDs	CED	BW	WW	YW	MK	TM	CEM
	7	1.2	63	88	34	65	8

3 - 69Y

Nordal Your So Pretty

RGA 69Y CPF4077718 Apr. 20, 2011 Female

AUTO DOLLAR GENERAL 122R
HSF UNDERDOG
HIGHLAND POP STAR

LVLS SECRET WEAPON 4408K
AUTO KYRIA 232K
EXLR LATIGO 029M
NP VIDALIA 164H
TMF BREAK OUT 83M
JYF PEACH
HIGHLAND HANSOME
DELARS DIAMOND

STONEVIEW SUGAR SHACK
STONEVIEW U-SO-PRETTY
STONEVIEW LEATHER & LACE

Your So Pretty is unique in her physical and genetic makeup. Her sire, Underdog, proved to be a calving ease sire whose daughters have become some of our most impressive mature cows. On the dam side, the cow lineage also traces to our sire, Stoneyview Xceed, the Fall Fair Supreme Champion and also our impressive young sire, Alabama. If you are looking to boost maternal traits, this female holds a +37 for milk ranking in the top 1% of the breed. **Exposed to TMCK Westmoreland from May 23 to June 23; then to Hillview Zephyr from June 25 to August 1, 2015.**

Homozygous Polled • Black BW: 78 lbs. WW: 631 lbs. YW: 867 lbs.

EPDs	CED	BW	WW	YW	MK	TM	CEM
	6	2.3	58	83	38	66	8

4 - 206X

Nordal Xpressive 206X

RGA 206X CPF4077715 Apr. 12, 2010 Female

WULFS RANSOM 3059R
WULFS TUXEDO 3761T
WULF'S CASUAL 3161C

LVLS 842L
COLE MISS TANK 670S
COLE 156M

WULFS NASA 1212N
WULFS NOBILITY 3059N
WULF'S HOME RUN 9226AA
MISS WOLFETTE 8021K
LVLS POLLED JUSTICE 0601E
LVLS CANDY 842C
EXLR FOCUSED 197J
COLE 892H

Xpressive 206X is a performance daughter of Tuxedo. A sire that produced progeny with an abundance of growth and maternal traits. The influence of the Coleman sire Tank is found in the dam side. Tank is the sire found in the pedigree of our leading herdsire "Seize the Day." Xpressive raised one of our top Westmoreland bull calves this year and is rebred the same way for 2016. **Exposed to TMCK Westmoreland from May 23 to June 23; then to Hillview Zephyr from June 25 to August 1, 2015.**

Homozygous Polled • Red BW: 90 lbs. WW: 692 lbs. YW: 991 lbs.

EPDs	CED	BW	WW	YW	MK	TM	CEM
	5	4.1	75	104	22	59	8



Lot 4

5 - 306Z

Nordal Xpression 306Z

RGA 306Z CPF4077716 Apr. 14, 2012 Female

WULFS NASA 1212N
NORDAL NASDAQ
COLE MISS BLACK TANK 834U

WULFS TUXEDO 3761T
NORDAL XPRESSIVE 206X
COLE MISS TANK 670S

WULFS FANFARE 4055F
MISS WOLFETTE 1212L
COLE BLACK TANK 24P
COLE 95M
WULFS RANSOM 3059R
WULF'S CASUAL 3161C
LVLS 842L
COLE 156M

A daughter of Xpressive. Xpression 306Z is sired by our calving ease sire, Nordal Nasdaq 34X. A very correct made female with an ideal udder structure. **Exposed to TMCK Westmoreland from May 23 to June 23; then to Hillview Zephyr from June 25 to August 1, 2015.**

Double Polled • Red BW: 78 lbs. WW: 591 lbs. YW: 802 lbs.

EPDs	CED	BW	WW	YW	MK	TM	CEM
	8	1.6	59	78	21	36	7



Lot 6

6 - 206B

Nordal Xpressive 206B

RGA 206B CPF4077717 Apr. 10, 2014 Female

AHCC WESTWIND W544
EXLR WESTWIND 006Y
EXLR LUVLY 036T

WULFS TUXEDO 3761T
NORDAL XPRESSIVE 206X
COLE MISS TANK 670S

KAJO RESPONDER 120R
AHCC MISS WULF HUNT R544
LESF ASPHALT 9N
EXLR 315J
WULFS RANSOM 3059R
WULF'S CASUAL 3161C
LVLS 842L
COLE 156M

Here is one of our very best from our 2014 calf crop. A daughter of Expressive 206X and sired by EXLR Westwind 006Y. A deep sided, long bodied female. Her sire's dam is part of the immortal "Luvly" family. **Exposed to Nordal JJ Amazon from June 16 to August 25, 2015.**

Homozygous Polled • Red BW: 86 lbs. WW: 712 lbs. YW: 929 lbs.

EPDs	CED	BW	WW	YW	MK	TM	CEM
	5	3.3	70	104	24	59	7



7 - 213X

Nordal Xpect A Thrill

RGA 213X CPF4077719 Apr. 15, 2010 Female

JCL LODESTAR 27L
BEUS THRILLER 460T
BEUS PRETTY LADY 460P

HUNTS HI-LITER 245G
LOGAN'S CHEERLEADER 280G
MINE POLLED DRYDOCK 004H
COLE ELECT LADY 60E
WULFS KLINT 5874K
ANDERS KAMEO
EXLR T BONE 037F
NORDAL CARMELLA

ANDERS NARCOTIC
NORDAL ROMANCE
NORDAL KARISTA

Xpect a Thrill is a big bodied daughter of the Lodestar son Thriller. Her dam is a heavy milking daughter of our former sire Narcotic. Xpect a Thrill will impress you with her volume and depth in a perfectly designed profile. **Exposed to TMCK Westmoreland from May 23 to June 23; then to Hillview Zephyr from June 25 to August 1, 2015.**

Homozygous Polled • Black BW: 84 lbs. WW: 631 lbs. YW: 868 lbs.

EPDs	CED	BW	WW	YW	MK	TM	CEM
	5	3.3	65	96	32	64	6

8 - 3Z

Nordal Third Base

RGA 3Z CPF0216508 Apr. 3, 2012 Female

WULFS RANSOM 3059R
WULFS TUXEDO 3761T
WULF'S CASUAL 3161C

WULFS NASA 1212N
WULFS NOBILITY 3059N
WULF'S HOME RUN 9226AA
MISS WOLFETTE 8021K
CANE RIDGE POLL STACKER
CANE RIDGE DUCHESS 150U
DCLE COYOTE MOON
NORDAL ARIANNA

ROYAL GREYHOUND 114G
NORDAL MELINDA
NORDAL KIEANNA

A moderate framed Tuxedo daughter that excels in maternal traits. She produced a stellar Westmoreland daughter in 2015 that will remain in the herd. **Exposed to TMCK Westmoreland from May 23 to June 23; then to Hillview Zephyr from June 25 to August 1, 2015.**

Homozygous Polled • Red BW: 94 lbs. WW: 721 lbs. YW: 1103 lbs.

EPDs	CED	BW	WW	YW	MK	TM	CEM
	4	4.6	70	95	25	60	4

9 - 175A

Nordal South West

RGA 175A CPF0220965 May. 3, 2013 Female

DHVO DEUCE 132R
TMCK WESTMORELAND 889X
MCBN TRANQUILLITY BROWN

GPFF BLAQUE RULON
AMY JO DHAN 20L
AUTO DOLLAR GENERAL 122R
CARROUSELS PINA COLADA
JCL BLACK OUT
WLCC ANGELA 33B
NORDAL UNIROYAL
MOUNTFIELD JULIE

DCLE COYOTE MOON
NORDAL 75Y TIME TO GO
NORDAL CROWN JEWEL

One of the very best and most impressive daughters of Westmoreland. She is deep, wide bodied and correct in every way. She produced one of our top performing heifer calves in the 2015 calf crop. The strength of the cow families behind this young female is some of our very best proven lines. **Exposed to Stoneyview Alabama from June 13 to August 1, 2015.**

Double Polled • Black BW: 84 lbs. WW: 690 lbs. YW: 872 lbs.

EPDs	CED	BW	WW	YW	MK	TM	CEM
	5	3.5	66	92	28	61	4



10 - 735A

Nordal *Tranquillity*

RGA 735A CPF407720 Apr. 18, 2013 Female

DHVO DEUCE 132R
TMCK WESTMORELAND 889X
MCBN TRANQUILLITY BROWN

ANLC LAGER 1746L
NORDAL 725 PATRICIA
NORDAL 25B LAUREN

GPFF BLAQUE RULON
AMY JO DHAN 20L
AUTO DOLLAR GENERAL 122R
CARROUSELS PINA COLADA
COLE FIRST DOWN 46D
TCR CHARM 305C
EXLR T BONE 037F
NORDAL BOBBI JO

Tranquillity is one female that is hard to part with. Her cow family is one of our original female lines. This family has produced sons and daughters that we have sold worldwide. The sires found in her pedigree have been many of the best that the breed has seen, with the influence of T-Bone, First Down, Harvest Olympus and Norseman on the dam side. She was our first two year old to calve and raised an impressive daughter. Her full brother will be one of our leading young sires in our 2016 bull sale line up. **Exposed to Stoneyview Alabama from June 12 to August 17, 2015.**

Homozygous Polled • Black BW: 80 lbs. WW: 672 lbs. YW: 887 lbs.

EPDs	CED	BW	WW	YW	MK	TM	CEM
	5	2.6	68	96	32	66	6



Lot 10

11 - 324A

Nordal *Abigail*

RGA 324A CPF4077618 Apr. 15, 2013 Female

DHVO DEUCE 132R
TMCK WESTMORELAND 889X
MCBN TRANQUILLITY BROWN

ROYAL GREYHOUND 114G
NORDAL MONIQUE
NORDAL 24E JAYCENE

GPFF BLAQUE RULON
AMY JO DHAN 20L
AUTO DOLLAR GENERAL 122R
CARROUSELS PINA COLADA
CANE RIDGE POLL STACKER
CANE RIDGE DUCHESS 150U
EXLR POLLED SUNDOWN 638F
NORDAL ELECTRA

An impressive Westmoreland daughter. She is long fronted with ample length to her side and depth of quarter that will impress. She shows the impressive qualities of all the Westmoreland daughters with her milking ability and physical eye appeal. **Exposed to Stoneyview Alabama from June 13 to August 1, 2015.**

Homozygous Polled • Black BW: 80 lbs. WW: 674 lbs. YW: 937 lbs.

EPDs	CED	BW	WW	YW	MK	TM	CEM
	4	3.8	72	102	30	66	4



Lot 12

12 - 706A

Nordal 706T *Whitesocks*

RGA 706A CPF0220537 Mar. 30, 2013 Female

DHVO DEUCE 132R
TMCK WESTMORELAND 889X
MCBN TRANQUILLITY BROWN

TMF LANDMARK 601L
BAR 3R TRES BIEN
ZIPPY

GPFF BLAQUE RULON
AMY JO DHAN 20L
AUTO DOLLAR GENERAL 122R
CARROUSELS PINA COLADA
EXLR DAKOTA 353G
NP SHAMELESS HUSSEY 2037G
HILLTOPS HIWAYMAN
SIRLOIN NOVELETTE

White Socks is a young female bound for great things. She is the most impressive Westmoreland daughter of the group. Her physical presence will impress with correctness in stature and depth. She comes from our most proven dam in 706T. This matron produced our top seller in 2012 going to Allan Cass. One of our very best. Her full brother will be one of our lead bulls in our 2016 Bull Sale. **Bred to Stoneyview Alabama on June 4 and exposed to him from June 12 to August 17, 2015.**

Homozygous Polled • Black BW: 80 lbs. WW: 718 lbs. YW: 1022 lbs.

EPDs	CED	BW	WW	YW	MK	TM	CEM
	5	1.8	63	91	35	67	5

13 - 806A

Nordal 706W *Alyshia* 806A

RGA 806A CPF4077407 Mar. 30, 2013 Female

DHVO DEUCE 132R
TMCK WESTMORELAND 889X
MCBN TRANQUILLITY BROWN

RWK TURNIN' HEADS
NORDAL 706T WINSOME
BAR 3R TRES BIEN

GPFF BLAQUE RULON
AMY JO DHAN 20L
AUTO DOLLAR GENERAL 122R
CARROUSELS PINA COLADA
CARROUSELS PURE POWER
RWK PICTURE PERFECT
TMF LANDMARK 601L
ZIPPY

From the same cow family as White Socks 706A. Alyshia 806A comes as one of the deepest sided Westmoreland females. She produced a stout bull calf in 2015. **Exposed to Stoneyview Alabama from June 12 to August 17, 2015.**

Polled • Black BW: 78 lbs. WW: 658 lbs. YW: 811 lbs.

EPDs	CED	BW	WW	YW	MK	TM	CEM
	5	3.7	65	95	31	63	5

16 - 752A

Nordal 52U *Attire*

RGA 752A CPF0220536 Apr. 10, 2013 Female

DHVO DEUCE 132R
TMCK WESTMORELAND 889X
MCBN TRANQUILLITY BROWN

AUTO DOLLAR GENERAL 122R
COLE MISS GENERAL 852U
COLE 929J

GPFF BLAQUE RULON
AMY JO DHAN 20L
AUTO DOLLAR GENERAL 122R
CARROUSELS PINA COLADA
LVLS SECRET WEAPON 4408K
AUTO KYRIA 232K
COLE FIRST DOWN 46D
COLE 92G

Attire is from the impressive Miss General 52U. A deep bodied high maternal Dollar General daughter. Miss General 52U is also the dam of Lot 2. Attire 752A ranks at the top of the breed for CED, WW, YW, MLK & TM. An outstanding daughter of Westmoreland. **Exposed to Stoneyview Alabama from June 12 to August 17, 2015.**

Homozygous Polled • Homozygous Black BW: 78 lbs. WW: 644 lbs. YW: 838 lbs.

EPDs	CED	BW	WW	YW	MK	TM	CEM
	7	1.6	71	105	36	72	7

14 - 482A

Nordal 402U *Amber* 402A

RGA 482A CPF0221546 May 6, 2013 Female

DHVO DEUCE 132R
TMCK WESTMORELAND 889X
MCBN TRANQUILLITY BROWN

STONEYVIEW SUGAR SHACK
STONEYVIEW UNGER
STONEYVIEW MS. RIVER BEND

GPFF BLAQUE RULON
AMY JO DHAN 20L
AUTO DOLLAR GENERAL 122R
CARROUSELS PINA COLADA
TMF BREAK OUT 83M
JYF PEACH
SHW POLLED MONEY MAKER
MS STONEYVIEW NANCY

Amber 482A comes from one of our very best female lineages. She is impressive with her depth and length. These Westmoreland daughters have continued to mature into impressive young matrons. She raised one of our top heifer calves in 2015 in her first time. **Exposed to Stoneyview Alabama from June 12 to August 17, 2015.**

Homozygous Polled • Black BW: 82 lbs. WW: 677 lbs. YW: 892 lbs.

EPDs	CED	BW	WW	YW	MK	TM	CEM
	5	3.5	71	102	32	67	6

17 - 587A

Nordal 487P *Anestasia*

RGA 587A CPF4078053 Apr. 16, 2013 Female

DHVO DEUCE 132R
TMCK WESTMORELAND 889X
MCBN TRANQUILLITY BROWN

RPY LITIGATOR
ANDERS PICTURE
ANDERS HEARTACHE

GPFF BLAQUE RULON
AMY JO DHAN 20L
AUTO DOLLAR GENERAL 122R
CARROUSELS PINA COLADA
WULFS GUARDIAN 5074G
RPY GEMSTONE
WULFS FIRESTONE 9453F
ANDERS POLL XALTER

Anestasia 587A is an attractive made Westmoreland daughter. She is from a performance driven Litigator daughter. This young two year old raised one of our very best heifer calves in 2015. It will be exciting to see the combination of Alabama on this Westmoreland female. **Exposed to Stoneyview Alabama from June 12 to August 30, 2015.**

Double Polled • Black BW: 82 lbs. WW: 648 lbs. YW: 811 lbs.

EPDs	CED	BW	WW	YW	MK	TM	CEM
	3	4.8	70	104	26	61	4

15 - 703A

Nordal 703 *Amaze*

RGA 703A CPF0220535 Apr. 12, 2013 Female

DHVO DEUCE 132R
TMCK WESTMORELAND 889X
MCBN TRANQUILLITY BROWN

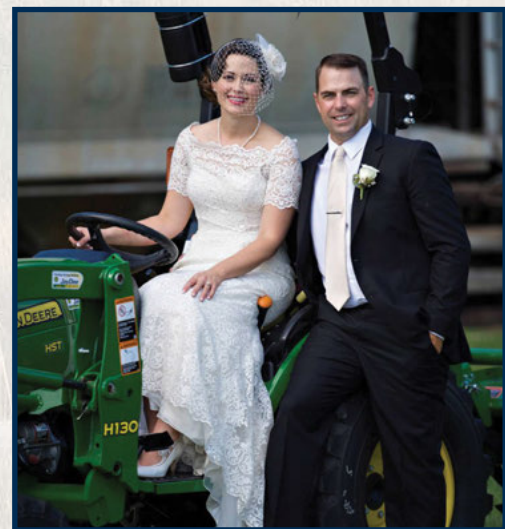
2HR PAYMENT PLUS7P
NORDAL 703 TONI
NORDAL 103C CASSIE

GPFF BLAQUE RULON
AMY JO DHAN 20L
AUTO DOLLAR GENERAL 122R
CARROUSELS PINA COLADA
EXLR POLLED AUSTIN 265J
CM POLLED KATIE
EXLR T BONE 037F
NORDAL CASSIDY

An impressive big framed Westmoreland daughter that is backed by some impressive producing dams. Tranquility Brown, CM Polled Katie, Nordic Fern. Amaze produced an extraordinary daughter on her first production year that will take her place in the herd. One of our most productive cow families. **Exposed to Stoneyview Alabama from June 12 to August 17, 2015.**

Homozygous Polled • Black BW: 82 lbs. WW: 718 lbs. YW: 994 lbs.

EPDs	CED	BW	WW	YW	MK	TM	CEM
	5	3.2	66	93	28	62	5



Grant and Christina from their wedding day. This will be the “coming out” of Grant as an official member of our family. Grant and Christina were married August 8 of this year. Want some stories, ask Christina about “the Door.”

18 - 75B

Nordal Brown Sugar

RGA 75B CPF4077701 Apr. 11, 2014 Female

DHVO DEUCE 132R
TMCK WESTMORELAND 889X
MCBN TRANQUILLITY BROWN

DCLE COYOTE MOON
NORDAL 75Y TIME TO GO
NORDAL CROWN JEWEL

A correct made Westmoreland daughter from one of our oldest cow families that stems from a full blood base. DCLE Coyote Moon is found on the dam side. Coyote Moon was one of our herd sires that left a remarkable set of sound made, easy fleshing sons and daughters. **Exposed to Nordal JJ Amazon from June 16 to August 25, 2015.**

Double Polled • Black BW: 80 lbs. WW: 693 lbs. YW: 918 lbs.

EPDs	CED	BW	WW	YW	MK	TM	CEM
	5	3.2	66	92	28	61	4

GPFF BLAQUE RULON
AMY JO DHAN 20L
AUTO DOLLAR GENERAL 122R
CARROUSELS PINA COLADA
JCL BLACK OUT
WLCC ANGELA 33B
NORDAL UNIROYAL
MOUNTFIELD JULIE

20 - 39B

Nordal Beyonce

RGA 39B CPF4077703 Apr. 11, 2014 Female

DHVO DEUCE 132R
TMCK WESTMORELAND 889X
MCBN TRANQUILLITY BROWN

HIGHLAND NEW DISCOVERY
NORDAL 471T
NORDAL JACQUALINE

Beyonce is a correct made heavy muscled Westmoreland daughter coming from a New Discovery — T-Bone dam. This cow family has been one of our most productive in producing sons with exceptional yield and muscling. **Exposed to Nordal JJ Amazon from June 16 to August 25, 2015.**

Double Polled • Black BW: 82 lbs. WW: 674 lbs. YW: 887 lbs.

EPDs	CED	BW	WW	YW	MK	TM	CEM
	4	3.4	71	101	30	65	5

GPFF BLAQUE RULON
AMY JO DHAN 20L
AUTO DOLLAR GENERAL 122R
CARROUSELS PINA COLADA
EXLR POLLED AUSTIN 265J
NP MISS 537H
EXLR T BONE 037F
NORDAL EBONY NIGHTS

19 - 131B

Nordal Black Pippa

RGA 131B CPF4077702 Apr. 10, 2014 Female

DHVO DEUCE 132R
TMCK WESTMORELAND 889X
MCBN TRANQUILLITY BROWN

ANDERS NARCOTIC
NORDAL ROCHELLA
NORDAL 31B LATICIA

Black Pippa comes from the performance influenced Rochella 131R cow family. Adding the strength of Westmoreland to the productivity of this family adds to her credentials. **Exposed to Nordal JJ Amazon from June 16 to August 25, 2015.**

Homozygous Polled • Black BW: 82 lbs. WW: 680 lbs. YW: 877 lbs.

EPDs	CED	BW	WW	YW	MK	TM	CEM
	4	3.5	71	101	28	63	5

GPFF BLAQUE RULON
AMY JO DHAN 20L
AUTO DOLLAR GENERAL 122R
CARROUSELS PINA COLADA
WULFS KLINT 5874K
ANDERS KAMEO
NORDAL RIO GRANDE
CAM POLL BANNER

21 - 1B

Nordal Be Mine

RGA 1B CPF4077704 Apr. 12, 2014 Female

DHVO DEUCE 132R
TMCK WESTMORELAND 889X
MCBN TRANQUILLITY BROWN

RPY PAYNES THUNDERSTRUCK
GARDINER'S U NEED ME
BELLDON NEVAEN 56N

Be Mine is one of Westmoreland's stoutest made daughters. She is deep bodied, wide based and thick. Her dam is a big bodied, long made, Thunderstruck daughter, Be Mine is one of our very best Westmoreland females. **Exposed to Nordal JJ Amazon from June 16 to August 25, 2015.**

Homozygous Polled • Black BW: 86 lbs. WW: 751 lbs. YW: 1024 lbs.

EPDs	CED	BW	WW	YW	MK	TM	CEM
	6	3.3	70	102	26	61	3

GPFF BLAQUE RULON
AMY JO DHAN 20L
AUTO DOLLAR GENERAL 122R
CARROUSELS PINA COLADA
WULFS KLINT 5874K
PAYNES LOULOU RPY 74L
FAIRLEA KING WULF
BELLDON HOLLIES DELITE K



Lot 21



Lot 23

22 - 854B

Normal Black Spice

RGA 854B CPF4077705 Apr. 9, 2014 Female

DHVO DEUCE 132R
 TMCK WESTMORELAND 889X
 MCBN TRANQUILLITY BROWN
 ANLC MAXIMUM LOAD 2708M
 NORDAL MAXIE
 NORDAL ASPIRING

GPFF BLAQUE RULON
 AMY JO DHAN 20L
 AUTO DOLLAR GENERAL 122R
 CARROUSELS PINA COLADA
 KRMC OUTCROSS 192G
 SFKL SHOWGIRL 523E
 ANDERS POLL DETROIT
 NORDAL ASPIRE

Black Spice has two of our leading maternal trait sires in her pedigree. Westmoreland and Maximum Load. She comes complete with the services of our young sire Alabama adding the influence of Landmine and T-Bone. **Exposed to Nordal JJ Amazon from June 16 to August 25, 2015.**

Double Polled • Black BW: 78 lbs. WW: 648 lbs. YW: 837 lbs.

EPDs	CED	BW	WW	YW	MK	TM	CEM
	5	2.1	64	90	32	64	6

23 - 440B

Excel Polled Autumn Yard

XLR 440B CPF0218695 Feb. 17, 2014 Female

COLE SEIZE THE DAY 22S
 NORDAL YARD STICK
 NORDAL SENSOR

BLUEBERRY'S UNIFORM POWER
 EXCEL POLLED ALEAH
 EXCEL POLLED APPLGATE

COLE BLACK TANK 24P
 COLE 95M
 ANLC 3731N
 NORDAL EVE
 SIRLOIN POWERFUL
 BLUEBERRY'S LATTE'
 EXCEL POLLED TOUCHTONE
 EXCEL POLLED APPLE CRISP

Autumn Yard is from our top selling Seize the Day son, Yard Stick. She was bred in the Excel Ranches program. She is impressive in her growth and performance. She carries the service of Westmoreland. **Bred to TMCK Westmoreland on May 29, 2015 and exposed to Nordal JJ Amazon from June 16 to August 1, 2015.**

Homozygous Polled • Black BW: 95 lbs. WW: 659 lbs.

EPDs	CED	BW	WW	YW	MK	TM	CEM
	3	5.7	67	89	22	56	2

24 - 1A

Nordal 1U Allie

RGA 1A CPF0221548 May 3, 2013 Female

WULFS RANGE RIDER 2056R
 WULFS UNFATHOMABLE 5167U
 WULFS RONALEE 5167R

RPY PAYNES THUNDERSTRUCK
 GARDINER'S U NEED ME
 BELLDON NEVAEN 56N

RGMA NIGHT RIDER 73N
 WULFS MAGGIE 2056M
 WULFS NASA 1212N
 WULFS KATE 0201K
 WULFS KLINT 5874K
 PAYNES LOULOU RPY 74L
 FAIRLEA KING WULF
 BELLDON HOLLIES DELITE K

Allie 1A is a Homozygous Polled daughter of the high maternal sire, Unfathomable. The daughters of this sire have matured into our most highly prized young dams for their abundance of milk and calving ease. **Exposed to TMCK Westmoreland from May 25 to June 23; then to Hillview Zephyr from June 25 to August 1, 2015.**

Homozygous Polled • Red BW: 84 lbs. WW: 637 lbs. YW: 811 lbs.

EPDs	CED	BW	WW	YW	MK	TM	CEM
	6	2.8	67	92	26	60	3



Carter Riding

25 - 337A

Excel Polled *Astound*

XLR 337A CPF0215015 Feb. 17, 2013 Female

WULFS SHOP TALK 2332S
WULFS XANDREW 8401X
WULFS UZURI 8401U

DC POLLED SNIPER
EXCEL POLLED WINK
EXCEL POLLED TOMATO

CARROUSELS PURE POWER
WULFS MYRLENE 2332M
WULFS NASCAR G949N
WULFS EVERLASTING 5000E
RPY PAYNES PIPELINE 15P
DC POLLED NATALYNN
ANCHOR B FREEDOM
LKL POLLED NORTH STAR

Astound 337A comes as one of our premier red two year olds. She is one that makes you stop and take a second look at her smooth structure, depth and style. She has an impressive udder placement with ample milk volume. Her daughter will continue her lineage in the herd. **Bred to TMCK Westmoreland on June 8 and exposed to him from June 6 to June 23, 2015.**

Homozygous Polled • Red BW: 86 lbs. WW: 568 lbs.

EPDs	CED	BW	WW	YW	MK	TM	CEM
	5	2.0	66	95	26	58	6



26 - 28A

Qually-T *Angel*

AKL 28A CPF0220888 Feb. 14, 2013 Female

COLE SEIZE THE DAY 22S
NORDAL UNDAUNTED
NORDAL 18J RAMADA

ANCHOR B BLACK MAMBO
QUALLY-T TO DIE FOR
QUALLY-T JUDE

COLE BLACK TANK 24P
COLE 95M
COLE LOGIC 24L
TRIPLE "J" JANAYA
SLVLDVFC PLANET HOLLYWOOD
KMC CAMEO'S DREAM
WADDLES CLEAR CHOICE 360
QUALLY-T DESIGN

Angel 28A is sired by a past bull sale top seller Seize the Day son, Nordal Undaunted. She is deep bodied and heavy muscled. She carries the service to Alabama. **Bred to Stoneyview Alabama on May 30 and exposed to him from June 12 to August 17, 2015.**

Homozygous Polled • Double Black BW: 90 lbs.

EPDs	CED	BW	WW	YW	MK	TM	CEM
	2	5.1	61	82	25	55	1



27 - 67A

Qually-T August *Heat*

AKL 67A CPF0220896 Feb. 24, 2013 Female

COLE SEIZE THE DAY 22S
NORDAL UNDAUNTED
NORDAL 18J RAMADA

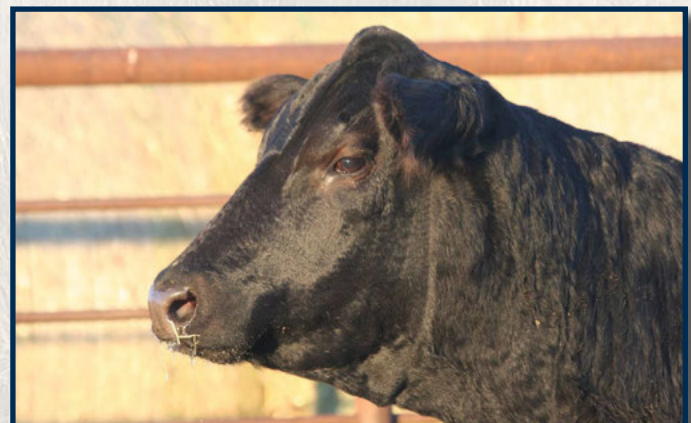
QUALLY-T MR BIG
QUALLY-T UNCONDITIONAL
QUALLY-T MANY THRILLS

COLE BLACK TANK 24P
COLE 95M
COLE LOGIC 24L
TRIPLE "J" JANAYA
TAZ
NORDAL GINGERSNAP
T-DEL GREAT
QUALLY-T DESIGN

August Heat is a two year old female that is notable for her style, correctness and sharp features. Her dam, Undaunted, has done an outstanding job for the Quallys. August Heat stands out as one of our most impressive two year old pairs. Her daughter will remain as part of our future. **Bred to TMCK Westmoreland June 4 and exposed to Stoneyview Alabama from June 12 to August 17, 2015.**

Homozygous Polled • Double Black BW: 89 lbs.

EPDs	CED	BW	WW	YW	MK	TM	CEM
	3	5.7	62	83	25	56	1



SERVICE SIRES

TMCK *Westmoreland* 889X

TMCK 889X NPM1986476 Oct. 2, 2010 Male



GPFF BLAQUE RULON
DHVO DEUCE 132R
AMY JO DHAN 20L

AUTO DOLLAR GENERAL 122R
MCBN TRANQUILLITY BROWN
CARROUSELS PINA COLADA

BLACK DIAMOND
QUAIL RUN RAMONA BP
BLACK CAT DHAN 152G
GPFF AMBER JO
LVLS SECRET WEAPON 4408K
AUTO KYRIA 232K
AUTO BLACK DAKOTA 129J
ELMW GINNIE P58G

TMCK Westmoreland 889X has emerged as one of the great purebred Limousin breeding bulls of all time. His daughters make up the lion's share of the Limousin sale offering. The homozygous polled and homozygous herd sire excels in all aspects of the industry. The genotype and phenotype are in perfect harmony. His progeny are consistently high-performing and efficient gaining individuals. His sons have been in high demand in past Nordan Bull Sales. His daughters are among the most efficient of any sire group at Nordan. His sire, DHVO Deuce 132R, is one of the greatest breeding U.S. National Champion bulls. His progeny have paced the industry in most all portions of economically important traits. His dam, deceased, has earned the notoriety of being one of the very best producers of the breed's best seedstock. TMCK Westmoreland 889X has, over time, proven to be even the most significant breeding piece from this excellent lineage. Daughters of this great breeding sire are available nowhere else but through this breeding program. The uniformity and consistency is apparent when evaluating the Limousin sale offering.

Homo Polled • Homo Black BW: 86 lbs. 205 DW: 726 lbs. 365 DW: 1384 lbs.

EPDs	CED	BW	WW	YW	MK	TM	CEM
	6	2.1	78	115	30	69	6

Hillview *Zephyr*

RGK 224Z CPM0213516 Mar. 31, 2012 Male

WULFS REALTOR 1503R
EXCEL POLLED WESTERN STAR
TJ'S POLLED EBONY

SIRLOIN GUS
HILLVIEW'S MONA LISA
HILLVIEW POLL HEIRESS

HUNT MR JOCK 44J
WULFS LENA 1503L
EMF POLL FRIENDLY
LIMAC ENVOIOUS
J&J BLACK ENERGY
MISS DOUBLE E
HILLVIEW POLL ENHANCHER
HILLVIEW POLL ENCOUNTER

Zephyr was the top selling bull from the 2014 Prime Club Sale. He is deep sided with an abundance of length coupled with a large scrotal size. He carries an outcross pedigree to our herd. We look forward to the continued influence of this performance sire. Purebred.

Homozygous Polled • Red BW: 90 lbs. 205 DW: 690 lbs.

EPDs	CED	BW	WW	YW	MK	TM	CEM
	2	5.0	69	96	24	58	3

Nordan JJ *Amazon* 457A

RGA 557A CPM0220534 Apr. 14, 2013 Male

WULFS NASA 1212N
NORDAL NASDAQ
COLE MISS BLACK TANK 834U

WULFS TUXEDO 3761T
NORDAL YOUR SWEET
NORDAL 52K REAL SWEET

WULFS FANFARE 4055F
MISS WULFETTE 1212L
COLE BLACK TANK 24P
COLE 95M
WULFS RANSOM 3059R
WULF'S CASUAL 3161C
ANDERS NARCOTIC
NORDAL KARITA

Amazon 557A was chosen to be our calving ease bull following in the footsteps of his sire Nasdaq 34X. This pedigree has been consistent in low birth, calving ease and vigour. His sire's dam is a full sister to our Seize the Day herdsire. Purebred.

Polled • Red BW: 78 lbs.

EPDs	CED	BW	WW	YW	MK	TM	CEM
	8	2.3	65	87	28	60	6

Stoneyview *Alabama*

DTC 66A CPM0214648 Mar. 10, 2013 Male

HIGHLAND LANDMINE
NORDAL SELECT
NORDAL DREAMER

STONEYVIEW SUGAR SHACK
STONEYVIEW WILDROSE 22W
MS STONEYVIEW NANCY

KRMC OUTCROSS 192G
POLLED EVE 109C
EXLR T BONE 037F
NORDAL ELUSIVE DREAMS
TMF BREAK OUT 83M
JYF PEACH
HIGHLAND HANSOME
DIAMOND T HONEY

Alabama is sired by one of the great sons of Landmine and a T-Bone dam, Nordan Select. Select was a past Bull Sale top seller going to Stoneyview Farms. Alabama was chosen as the top pick from the Stoneyview program in 2014. The pedigree and physical presence of this young sire made it an easy decision to re-introduce the natural muscle and thickness the sires in his genetics legacy have produced over the years. To add to his attributes, the dam side is also the cow lineage that produced another one of our sires Stoneyview Xceed and the dam U-Be-Mine 69U, the dam of Lot 3 (RGA 69Y). Alabama was used exclusively back on the Westmoreland daughters. We are excited with the potential of this young sire. We have proven his pedigree in all aspects of our herd from the purebred to the commercial.

Homozygous Polled • Red BW: 86 lbs.

EPDs	CED	BW	WW	YW	MK	TM	CEM
	3	4.5	67	95	34	67	6



"BARD ROSE 78N" COW FAMILY

LOT 30 - RJG 78Y, LOT 31 - RJG 778Z, LOT 32 - 178A, LOT 32A - RJG 178C

To start off the Black Angus section is the Bard Rose Family. This group of females has proven to be one of our most prominent cow families. They are structurally sound and functional. They possess an ideal udder structure with tremendous milk volume. Bard Rose 78Y is a phenomenal daughter of Net Worth 17U. His daughters have proven to be spectacular mother cows. 78Y is one of our very best; she produced one of our top bull calves in 2015, weaning at over 800 pounds.

Bard Rose 778Z is the Emblazon 109X influenced portion of this family. She contains the pedigree of CAR IDEAL son, Crescent Creek Ideal 90S. Emblazon 109X and Ideal 90S have been two lead off bulls from the Crescent Creek program we have used with great success.

Bard Rose 178A comes as our favorite two year old. Her sire, Net Worth 17U, has been an outstanding herd sire evidenced in the sons and daughters he has produced. The dam of 178A, 78T is one of our most treasured, in the fact she is a leading daughter of Rainmaker 2154 who is in the top 1% of the breed for milk. To prove this family's capabilities, we have included the magnificent young female from 178A by the Bush's Tanker son, J&S Tanker. Bard Rose 178C has been a standout since birth. She is very correct in every way. A very bright future awaits this youngster backed by one of our very best cow families.



B
L
A
C
K
A
N
G
U
S

30 - 78Y

RJG 78Y 1881628 Mar. 27, 2011 Female

S A V NET WORTH 4200 AMF NHF CAF DDF
LOCUST GROVE NET WORTH 17U
 LOCUST GROVE BLACKBIRD 7M CAF
 HARMON KAHUNA L047
WINDOVER BARD ROSE 78N
 WINDOVER BARD ROSE 13K

Exposed to Crescent Creek Emblazon 109X from June 10 to August 18, 2015.

BW: 86 lbs. Adj WW: 677 lbs. Adj YW: 994 lbs.

EPDs	BW	WW	YW	Milk	TM	CE	MCE
	4.8	41	72	19	38	0.5	8.5

Nordal *Bard Rose* 78Y

S A V 8180 TRAVELER 004 AMF NHF CAF DMF DWF OSF DDF
 S A V MAY 2410
 S A F 598 BANDO 5175 AMF CAC DDF
 LOCUST GROVE CT BLACKBIRD 2F
 HARMON KAHUNA 9064 CAF DDF
 HARMON BLACK LADY 7238
 HARMON WEST POINT 7063
 WINDOVER BARD ROSE 61E

32 - 178A

RJG 178A 1879403 Apr. 1, 2013 Female

S A V NET WORTH 4200 AMF NHF CAF DDF
LOCUST GROVE NET WORTH 17U
 LOCUST GROVE BLACKBIRD 7M CAF
 RR 7407 RAINMAKER 2154
NORDAL 78N BARD ROSE 78T
 WINDOVER BARD ROSE 78N

Bred to Crescent Creek Chizzlar 10A on May 21, 2015. Exposed to LLB 44U Blackman 825A from June 14 to August 18, 2015.

BW: 80 lbs. Adj WW: 656 lbs. Adj YW: 982 lbs.

EPDs	BW	WW	YW	Milk	TM	CE	MCE
(PE)	2.8	46	81	26	49	3.0	9.5

Nordal 78T *Bard Rose* 178A

S A V 8180 TRAVELER 004 AMF NHF CAF DMF DWF OSF DDF
 S A V MAY 2410
 S A F 598 BANDO 5175 AMF CAC DDF
 LOCUST GROVE CT BLACKBIRD 2F
 A A R RAINMAKER 7407
 H A CONCEPCIONA 0224
 HARMON KAHUNA L047
 WINDOVER BARD ROSE 13K

31 - 778Z

RJG 778Z 1879394 Mar. 25, 2012 Female

BRONYX EMBLAZON 58T
CRESCENT CREEK EMBLAZON 109X
 CRESCENT CREEK PRIDE 27M

CRESCENT CREEK IDEAL 90S
NORDAL 78N BARD ROSE 78X
 WINDOVER BARD ROSE 78N

Bred to Jindra Double Vision on June 11, 2015. Exposed to HA Black Jack 4590 from June 16 to August 26, 2015.

BW: 72 lbs. Adj WW: 709 lbs. Adj YW: 897 lbs.

EPDs	BW	WW	YW	Milk	TM	CE	MCE
(PE)	4.6	41	71	15	37	-4.5	2.5

Nordal 78X *Bard Rose* 778Z

B C C-J C L EMBLAZON 038-287
 CRESCENT CREEK ROSEBUD 25R
 CHICO KODIAK 93K
 CRESCENT CREEK PRIDE 10E
 CAR IDEAL 061
 CRESCENT CREEK LADY BATE 6L
 HARMON KAHUNA L047
 WINDOVER BARD ROSE 13K

32A - 178C

RJG 178C 1881961 Apr. 3, 2015 Female

SIRE: JS Tanker 37 BW: 78 lbs.

EPDs	BW	WW	YW	Milk	TM	CE	MCE
(PE)	2.7	45	84	22	45	3.5	7.5

Nordal 178A *Bard Rose* 178C

"ERELITE" COW FAMILY

LOT 33 - RJG 74X, LOT 33A - RJG 474C, LOT 34 - RJG 174Z, LOT 35 - RJG 274A, LOT 36 - RJG 74Y, LOT 36A - 774C, LOT 37 - 74A

The ERELITE Family ranks as one of our top producing. They excel in every trait you want to rank, calving ease, growth performance, milk, disposition, volume, structure, they combine in all masterfully. We have purchased a number of females from Early Sunset program with this family being the center of attention. ERELITE 74X leads the group as one of the most complete females. She is a model of a mother with an ideal udder and well balanced, long sided body shape. Her daughters, 174Z and 274A by Emblazon 109X have more than qualified as leading dams with their first calves. The 2015 daughter by Free Wheeler 68Y will display the superior maternal values that Free Wheeler 68Y is proving to transmit to his daughters.

Erelite 74Y and her 2015 Chizzlar daughter will make you stop for a second look. 74Y is one large volume powerful made Net Worth 17U daughter. 74Y maintains one of the heaviest muscled widest based statures of the group. Erelite 74A is the two year old Net Worth 17U daughter from Erelite 74R. She displays all the characteristics of her older mature sisters.



B
L
A
C
K
A
N
G
U
S

33 - 74X Nordal 74R **Erelite** 74X

RJG 74X 1600217 Mar. 12, 2010 Female

CAR IDEAL 061
CRESCENT CREEK IDEAL 90S
CRESCENT CREEK LADY BATE 6L

TLA DAQUANTE 10H
EARLY SUNSET ERELITE 74R
EARLY SUNRISE ERELITE 87K

Exposed to LLB 268S Free Wheeler 68Y from June 10 to August 22, 2015.

BW: 84 lbs. Adj WW: 672 lbs. Adj YW: 883 lbs.

EPDs	BW	WW	YW	Milk	TM	CE	MCE
(PE)	4.2	38	64	16	33	-2.5	3.0

C A R IDEAL 650
C A R MISS VIKING 601
CRESCENT CREEK CHIEF 80G
CRESCENT CREEK LADY BATE 49G
R R DAQUANTAE 789E AMF NHF CAF DDF
DINTER PRIDE OF TERRLENE 13P
V D A R NEW TREND 315 AMF NHF CAF DDF
EARLY SUNSET ERELITE 7B

33A - 474C Nordal 74X **Erelite** 474C

RJG 474C 1882593 Apr. 13, 2015 Female

SIRE: LLB 268S Free Wheeler 68Y BW: 86 lbs.

EPDs	BW	WW	YW	Milk	TM	CE	MCE
(PE)	4.5	42	66	14	35	-4.5	0.5

34 - 174Z Nordal 74X **Erelite** 174Z

RJG 174Z 1879393 Mar. 22, 2012 Female

BRONYX EMBLAZON 58T
CRESCENT CREEK EMBLAZON 109X
CRESCENT CREEK PRIDE 27M

CRESCENT CREEK IDEAL 90S
NORDAL 74R ERELITE 74X
EARLY SUNSET ERELITE 74R

Exposed to HA Black Jack 4590 from June 11 to August 26, 2015.

BW: 84 lbs. Adj WW: 665 lbs. Adj YW: 845 lbs.

EPDs	BW	WW	YW	Milk	TM	CE	MCE
(PE)	4.5	44	74	15	37	-3.8	1.5

B C C-J C L EMBLAZON 038-287
CRESCENT CREEK ROSEBUD 25R
CHICO KODIAK 93K
CRESCENT CREEK PRIDE 10E
CAR IDEAL 061
CRESCENT CREEK LADY BATE 6L
TLA DAQUANTE 10H
EARLY SUNRISE ERELITE 87K

35 - 274A Nordal 74X **Erelite** 274A

RJG 274A 1881948 Mar. 23, 2013 Female

BRONYX EMBLAZON 58T
CRESCENT CREEK EMBLAZON 109X
CRESCENT CREEK PRIDE 27M

CRESCENT CREEK IDEAL 90S
NORDAL 74R ERELITE 74X
EARLY SUNSET ERELITE 74R

Exposed to HA Black Jack 4590 from June 11 to August 26, 2015.

BW: 88 lbs. Adj WW: 667 lbs. Adj YW: 862 lbs.

EPDs	BW	WW	YW	Milk	TM	CE	MCE
(PE)	4.5	44	74	15	37	-3.8	1.5

B C C-J C L EMBLAZON 038-287
CRESCENT CREEK ROSEBUD 25R
CHICO KODIAK 93K
CRESCENT CREEK PRIDE 10E
CAR IDEAL 061
CRESCENT CREEK LADY BATE 6L
TLA DAQUANTE 10H
EARLY SUNRISE ERELITE 87K

"ERELITE" COW FAMILY



Lot 36

36 - 74Y

Nordal 74R **Erelite** 74Y

RJG 74Y 1877443 Mar. 22, 2011 Female

S A V NET WORTH 4200 AMF NHF CAF DDF
LOCUST GROVE NET WORTH 17U
 LOCUST GROVE BLACKBIRD 7M CAF

TLA DAQUANTE 10H
EARLY SUNSET ERELITE 74R
 EARLY SUNRISE ERELITE 87K

Exposed to LLB 44U Blackman 825A from May 30 to June 10, and to LLB 2685 Free Wheeler 68Y from June 12 to August 26, 2015.

BW: 88 lbs. Adj WW: 674 lbs. Adj YW: 1004 lbs.

EPDs	BW	WW	YW	Milk	TM	CE	MCE
	5.1	45	77	19	41	2.0	6.5

S A V 8180 TRAVELER 004 AMF NHF CAF DMF DWF OSF DDF
 S A V MAY 2410
 S A F 598 BANDO 5175 AMF CAC DDF
 LOCUST GROVE CT BLACKBIRD 2F
 R R DAQUANTAE 789E AMF NHF CAF DDF
 DINTER PRIDE OF TERRENE 13P
 V D A R NEW TREND 315 AMF NHF CAF DDF
 EARLY SUNSET ERELITE 7B

36A - 774C

Nordal 74Y **Erelite** 774C

RJG 774C 1882594 Apr. 17, 2015 Female

SIRE: Crescent Creek Chizzlar 10A BW: 82 lbs.

EPDs	BW	WW	YW	Milk	TM	CE	MCE
(PE)	4.2	53	94	22	49	0.5	7.3

37 - 74A

Nordal 74R **Erelite** 74A

RJG 74A 1879400 Mar. 9, 2013 Female

S A V NET WORTH 4200 AMF NHF CAF DDF
LOCUST GROVE NET WORTH 17U
 LOCUST GROVE BLACKBIRD 7M CAF

TLA DAQUANTE 10H
EARLY SUNSET ERELITE 74R
 EARLY SUNRISE ERELITE 87K

Exposed to LLB 44U Blackman 825A from June 1 to August 26, 2015.

BW: 82 lbs. Adj WW: 602 lbs. Adj YW: 839 lbs.

EPDs	BW	WW	YW	Milk	TM	CE	MCE
	3.7	43	75	19	41	2.0	6.5

S A V 8180 TRAVELER 004 AMF NHF CAF DMF DWF OSF DDF
 S A V MAY 2410
 S A F 598 BANDO 5175 AMF CAC DDF
 LOCUST GROVE CT BLACKBIRD 2F
 R R DAQUANTAE 789E AMF NHF CAF DDF
 DINTER PRIDE OF TERRENE 13P
 V D A R NEW TREND 315 AMF NHF CAF DDF
 EARLY SUNSET ERELITE 7B

38 - 29Z

Early Sunset **Erelite** 29Z

MIJ 29Z 1663270 Jan. 14, 2012 Female

FIGURE 8 ANGUS TOM BOY 509R
EARLY SUNSET TOMMY BOY 8W
 EARLY SUNSET QUEEN 5T

EARLY SUNSET EILEENMERE 25G
EARLY SUNSET ERELITE 78K
 EARLY SUNSET ERELITE 64G

Erelite 29Z came to us as a young heifer from Jim and Peggy's Early Sunset program. She is from the famed Tommy Boy line that is steep in Canadian Genetics. If you wished for a young female to be a first rate mother and easy to be around and proud to have in the front pasture, Erelite 29Z would be that wish come true. Exposed to LLB 44U Blackman 825A from May 31 to August 26, 2015.

BW: 83 lbs. Adj WW: 644 lbs. Adj YW: 894 lbs.

EPDs	BW	WW	YW	Milk	TM	CE	MCE
	3.0	32	55	6	22	3.0	9.0

ADELPHI TOM BOY 20H
 FIGURE 8 ANGUS LADY 604J
 TC STOUT 407 NHF AMF
 EARLY SUNSET QUEEN 36P
 EARLY SUNSET EILEENMERE 24D
 EARLY SUNSET QUEEN 72U
 RITO 9M9 OF 2036 SCOTCH CAP AMF NHF
 EARLY SUNSET ERELITE 35T

B
L
A
C
K

A
N
G
U
S

"TIP TOP 672M" COW FAMILY

LOT 39 - RGA 672Y, LOT 40 - RGA 672Z

KBJ Tip Top 672M has proven to be one of our very elite dams. She has never missed. Be it a son or daughter, they have always ranked at the top of their division. The two daughters, 672Y and 672Z, represent this reliable and prolific cow family. You will be impressed with the consistency and natural thickness of the Net Worth 17U daughters.

B
L
A
C
K
A
N
G
U
S

39 - 672Y

Nordal 672M *Tip Top* 672Y

RJG 672Y 1827527 Apr. 12, 2011 Female

S A V NET WORTH 4200 AMF NHF CAF DDF
LOCUST GROVE NET WORTH 17U
 LOCUST GROVE BLACKBIRD 7M CAF
 A A R REALLY WINDY 1205 AMF NHF CAF DDF
KBJ TIPTOP 672M
 KBJ TIPTOP 358K

S A V 8180 TRAVELER 004 AMF NHF CAF DMF DWF OSF DDF
 S A V MAY 2410
 S A F 598 BANDO 5175 AMF CAC DDF
 LOCUST GROVE CT BLACKBIRD 2F
 A A R WINDY RIDGE 362
 A A R LADY KELTON 2170
 G D A R ROGUE 6322
 KBJ TIPTOP 206C

Exposed to LLB 268S Free Wheeler 68Y from June 10 to August 22, 2015.

BW: 90 lbs. Adj WW: 702 lbs. Adj YW: 918 lbs.

EPDs	BW	WW	YW	Milk	TM	CE	MCE
	4.4	48	86	22	44	4.5	6.0



Lot 40



Lot 41

40 - 672Z

Nordal 672M *Tip Top* 672Z

RJG 672Z 1882589 Apr. 23, 2012 Female

S A V NET WORTH 4200 AMF NHF CAF DDF
LOCUST GROVE NET WORTH 17U
 LOCUST GROVE BLACKBIRD 7M CAF
 A A R REALLY WINDY 1205 AMF NHF CAF DDF
KBJ TIPTOP 672M
 KBJ TIPTOP 358K

S A V 8180 TRAVELER 004 AMF NHF CAF DMF DWF OSF DDF
 S A V MAY 2410
 S A F 598 BANDO 5175 AMF CAC DDF
 LOCUST GROVE CT BLACKBIRD 2F
 A A R WINDY RIDGE 362
 A A R LADY KELTON 2170
 G D A R ROGUE 6322
 KBJ TIPTOP 206C

Exposed to Greenwood Accelerator 4A from June 4 to August 26, 2015.

BW: 86 lbs. Adj WW: 751 lbs. Adj YW: 938 lbs.

EPDs	BW	WW	YW	Milk	TM	CE	MCE
	3.3	49	89	22	44	4.5	6.0

41 - 228Y

Nordal 28W *Trendie* 228Y

RJG 228Y 1877444 Mar. 3, 2011 Female

HF KODIAK 5R MAF AMF NHF CAF DDF
SOO LINE MOTIVE 9016
 TLA BEAUTY 5R
 KBJ ROUND MR ANGUS 2P DDC
NORDAL 28M TRENDIE
 LEELA TRENDIE 28M

SANDY BAR ADVANTAGE 43M DDF
 WILBAR RUBY 955N
 RR 7407 RAINMAKER 2154
 TERRENE BEAUTY 35F
 KEN CARYL MR ANGUS 8017 CAF DDC
 DURNESS CASSIE 6M
 LUKENS 9440 SCOTCH CAP L463
 SHOWCASE TRENDIE 1230B

Trendie 228Y is one stellar Motive daughter. She is fault free in her make up, as is the common factor of all Motive progeny. She is extremely feminine throughout, with ample body mass.

Exposed to Crescent Creek Emblazon 109X from June 10 to August 28, 2015.

BW: 76 lbs. Adj WW: 640 lbs. Adj YW: 828 lbs.

EPDs	BW	WW	YW	Milk	TM	CE	MCE
(PE)	1.2	44	70	19	41	6.5	7.5

42 - 238Y

Nordal 138W *Eileen* 238Y

RJG 238Y 1877445 Apr. 16, 2011 Female

HF SUPREME 37T
NORDAL SUPREME 17W
 EARLY SUNSET ERELITE 17S
 SOO LINE QUANTUM 6142
NORDAL 138S EILEEN 138W
 SPRUCE ACRES EILEEN 138S

HF KODIAK 5R MAF AMF NHF CAF DDF
 HF BLACKBIRD 99H
 G A R US PREMIUM BEEF NHF AMF CAF DDF
 EARLY SUNSET ERELITE 17N
 CRESCENT CREEK QUANTUM 32N
 WINDOVER PRIDE 10K
 ISLA BANK TITAN 3018
 SPRUCE ACRES EILEEN 1L

Eileen 238Y is an angular, feminine made granddaughter of the Kodiak son, Supreme. Her sire is part of the Elite cow family lineage. She sells with the service of Emblazon 109X. Exposed to Greenwood Accelerator 4A from June 4 to August 26, 2015.

BW: 70 lbs. Adj WW: 713 lbs. Adj YW: 918 lbs.

EPDs	BW	WW	YW	Milk	TM	CE	MCE
(PE)	2.5	36	66	17	35	1.5	5.0

"EMBLAZON" DAUGHTERS

LOT 43 - RJG 461Z, LOT 44 - RJG 57Z, LOT 45 - RJG 927Z, LOT 46 - RJG 38Z, LOT 47 - RJG 26Z

"Daughters of our Emblazon 109X sire." These young "Z" model females are from very productive, capable cow families in our herd. The Emblazon 109X females have matured into moderate framed cows with excellent low maintenance qualities. If you or your customers operate low cost forage and long season grazing these Emblazon daughters will fit right in.

57Z and 38Z are two of Emblazon 109X's very best daughters. They are beautifully made with an impressive phenotype. Their body capacity and type is sure to impress.

43 - 461Z

Nordal 46W *Neonia* 461Z

RJG 461Z 1881899 Mar. 23, 2012 Female

BRONYX EMBLAZON 58T
CRESCENT CREEK EMBLAZON 109X
CRESCENT CREEK PRIDE 27M

CRESCENT CREEK IDEAL 90S
NORDAL 26R NEONIA 46W
CARONHILL NEONIA 26'05

B C C-J C L EMBLAZON 038-287
CRESCENT CREEK ROSEBUD 25R
CHICO KODIAK 93K
CRESCENT CREEK PRIDE 10E
CAR IDEAL 061
CRESCENT CREEK LADY BATE 6L
ELLIOTT MR. BOND 34N
THOMASON NEONIA 35H

Exposed to Greenwood Accelerator 4A from June 4 to August 26, 2015.

BW: 86 lbs. Adj WW: 675 lbs. Adj YW: 808 lbs.

EPDs	BW	WW	YW	Milk	TM	CE	MCE
(PE)	4.6	38	66	15	34	-3.5	2.0



Lot 43

44 - 57Z

Nordal 60W *Queen* 57Z

RJG 57Z 1879397 Apr. 12, 2012 Female

BRONYX EMBLAZON 58T
CRESCENT CREEK EMBLAZON 109X
CRESCENT CREEK PRIDE 27M

CRESCENT CREEK IDEAL 90S
NORDAL 72R QUEEN 60W
EARLY SUNSET QUEEN 72R

B C C-J C L EMBLAZON 038-287
CRESCENT CREEK ROSEBUD 25R
CHICO KODIAK 93K
CRESCENT CREEK PRIDE 10E
CAR IDEAL 061
CRESCENT CREEK LADY BATE 6L
G A R GRID MAKER AMF NHF CAF DDF
EARLY SUNSET QUEEN 18H

Exposed to Greenwood Accelerator 4A from June 4 to August 26, 2015.

BW: 82 lbs. Adj WW: 725 lbs. Adj YW: 907 lbs.

EPDs	BW	WW	YW	Milk	TM	CE	MCE
(PE)	4.4	43	74	14	36	-4.0	2.0



Lot 44

45 - 927Z

Nordal 127X *Queen Ruth* 927Z

RJG 927Z 1881945 Apr. 14, 2012 Female

BRONYX EMBLAZON 58T
CRESCENT CREEK EMBLAZON 109X
CRESCENT CREEK PRIDE 27M

CRESCENT CREEK IDEAL 90S
NORDAL 127T QUEEN RUTH 127X
CRESCENT CREEK QUEEN RUTH 127N

B C C-J C L EMBLAZON 038-287
CRESCENT CREEK ROSEBUD 25R
CHICO KODIAK 93K
CRESCENT CREEK PRIDE 10E
CAR IDEAL 061
CRESCENT CREEK LADY BATE 6L
CRESCENT CREEK CHIEF 72L
CRESCENT CREEK QUEEN RUTH 44J

Exposed to Greenwood Accelerator 4A from June 4 to August 26, 2015.

BW: 84 lbs. Adj WW: 765 lbs. Adj YW: 895 lbs.

EPDs	BW	WW	YW	Milk	TM	CE	MCE
(PE)	4.8	43	77	17	39	-6.0	0.0

46 - 38Z

Nordal 38T *Blackcap* 38Z

RJG 38Z 1831542 Apr. 10, 2012 Female

BRONYX EMBLAZON 58T
CRESCENT CREEK EMBLAZON 109X
CRESCENT CREEK PRIDE 27M

HF DISCOVERY 67P
DBRL 67P BLACKCAP 38T
ELLIOTT BLACKCAP 21M

B C C-J C L EMBLAZON 038-287
CRESCENT CREEK ROSEBUD 25R
CHICO KODIAK 93K
CRESCENT CREEK PRIDE 10E
HF POWER SOURCE 94M
HF LUCY 84J
SUPER UNIVERSE 1399 S D G
BIEVER'S BLACKCAP 15H

Bred to Jindra Double Vision on June 7, 2015. Exposed to LLB 44U Blackman 825A from June 14 to August 22, 2015.

BW: 86 lbs. Adj WW: 695 lbs. Adj YW: 924 lbs.

EPDs	BW	WW	YW	Milk	TM	CE	MCE
(PE)	4.6	47	78	12	36	-4.5	2.0

47 - 26Z

Nordal 115U *Bardella* 26Z

RJG 26Z 1879683 Apr. 14, 2012 Female

BRONYX EMBLAZON 58T
CRESCENT CREEK EMBLAZON 109X
CRESCENT CREEK PRIDE 27M

CRESCENT CREEK IDEAL 90S
NORDAL 115N BARDELLA 115U
CRESCENT CREEK BARDELLA 115N

B C C-J C L EMBLAZON 038-287
CRESCENT CREEK ROSEBUD 25R
CHICO KODIAK 93K
CRESCENT CREEK PRIDE 10E
CAR IDEAL 061
CRESCENT CREEK LADY BATE 6L
SOUTHLAND POWERBALL 128K
CRESCENT CR BARDELLA LASS 81J

Exposed to LLB 44U Blackman 825A from May 30 to August 26, 2015.

BW: 80 lbs. Adj WW: 690 lbs. Adj YW: 876 lbs.

EPDs	BW	WW	YW	Milk	TM	CE	MCE
(PE)	5.0	43	75	15	37	-6.0	0.0

“LADY ANNE 45S” COW FAMILY

LOT 48 - RJG 45A, LOT 49 - RJG 145A, LOT 50 - RJG 45B

The Lady Ann 45S females have worked exceptionally well with the Emblazon 109X influence. They are moderate framed stylish in appearance with ample body capacity. Lady Anne 45S originated in the Early Sunset program. She has been one of our very best producers each year. Her daughters have matured into impressive young mothers.

48 - 45A

Nordal 45S *Lady Ann* 45A

RJG 45A 1879404 Apr. 1, 2013 Female

BRONYX EMBLAZON 58T
CRESCENT CREEK EMBLAZON 109X
CRESCENT CREEK PRIDE 27M

EARLY SUNSET LEGEND 44N
EARLY SUNSET LADY ANN 45S
EARLY SUNSET LADY ANN 75F

Bred to Soo Line Motive 9016 on June 10, 2015. Exposed to LLB 44U Blackman 825A from June 14 to August 22, 2015.

BW: 86 lbs. Adj WW: 658 lbs. Adj YW: 881 lbs.

EPDs	BW	WW	YW	Milk	TM	CE	MCE
	4.1	41	78	14	34	-1.5	2.0

B C C-J C L EMBLAZON 038-287
CRESCENT CREEK ROSEBUD 25R
CHICO KODIAK 93K
CRESCENT CREEK PRIDE 10E
BACK ROADS 1418 LEGEND 1582
BRIMAR BLACK MAGNET 27J
HF DEALER 54C
EARLY SUNSET LADY ANN 62T

Trucking

Saskatoon Livestock Sales is a major Western Canadian Livestock market. For those needing assistance in arranging trucking, co-ordination of shipping will be done after the sale. Purchases may remain at Saskatoon Livestock Sales until immediate arrangements are met. For those requiring time for longer trucking arrangements, please contact Robbie or Sales Staff as purchase can be taken back to the farm. All cattle sell F.O.B. Saskatoon Livestock Sales. Load out – after sale.

49 - 145A

Nordal 45W *Lady Ann* 145A

RJG 145A 1879401 Mar. 23, 2013 Female

BRONYX EMBLAZON 58T
CRESCENT CREEK EMBLAZON 109X
CRESCENT CREEK PRIDE 27M

CRESCENT CREEK IDEAL 90S
NORDAL LADY ANN 45W
EARLY SUNSET LADY ANN 45S

Exposed to LLB 44U Blackman 825A from May 30 to August 26, 2015.

BW: 84 lbs. Adj WW: 617 lbs. Adj YW: 863 lbs.

EPDs	BW	WW	YW	Milk	TM	CE	MCE
(PE)	4.4	43	78	16	38	-3.0	1.5

B C C-J C L EMBLAZON 038-287
CRESCENT CREEK ROSEBUD 25R
CHICO KODIAK 93K
CRESCENT CREEK PRIDE 10E
CAR IDEAL 06I
CRESCENT CREEK LADY BATE 6L
EARLY SUNSET LEGEND 44N
EARLY SUNSET LADY ANN 75F

50 - 45B

Nordal 45S *Lady Anne* 45B

RJG 45B 1872875 Apr. 1, 2014 Female

BRONYX EMBLAZON 58T
CRESCENT CREEK EMBLAZON 109X
CRESCENT CREEK PRIDE 27M

EARLY SUNSET LEGEND 44N
EARLY SUNSET LADY ANN 45S
EARLY SUNSET LADY ANN 75F

Bred to Jindra Double Vision on June 7, 2015. Exposed to Early Sunset Settler 28B from June 15 to August 22, 2015.

BW: 86 lbs. Adj WW: 671 lbs. Adj YW: 889 lbs.

EPDs	BW	WW	YW	Milk	TM	CE	MCE
	3.9	39	76	14	34	-1.5	2.0

B C C-J C L EMBLAZON 038-287
CRESCENT CREEK ROSEBUD 25R
CHICO KODIAK 93K
CRESCENT CREEK PRIDE 10E
BACK ROADS 1418 LEGEND 1582
BRIMAR BLACK MAGNET 27J
HF DEALER 54C
EARLY SUNSET LADY ANN 62T

B
L
A
C
K
A
N
G
U
S



"NET WORTH 17U" DAUGHTERS

LOT 51 - RJG 148Z, LOT 52 - RJG 606Z, LOT 53 - RJG 281Z

Three beautifully structured Net Worth 17U daughters. Each of their dams has established themselves as top rated females in the herd. These young "Z" models have produced three of our top weaning ranked calves in 2015.

Blackcap 148Z will lead off a group of daughters from the very accomplished sire, Net Worth 17U. 148Z is what we strive for in our Angus females, feminine through the front leading into a big volume, wide topped body with a well placed, perfectly designed udder. She carries the service to the exciting young sire Chizzlar.

606Z raised an impressive Chizzlar daughter in 2015; 281Z has one of our most impressive bull calves, a stout made Motive son.



B
L
A
C
K

A
N
G
U
S

51 - 148Z

RJG 148Z 1879392

Nordal 148N *Blackcap* 148Z

Mar. 20, 2012 Female

S A V NET WORTH 4200 AMF NHF CAF DDF
LOCUST GROVE NET WORTH 17U
LOCUST GROVE BLACKBIRD 7M CAF

REMITALL LEGIONAIRE 8L
REMITALL BLACKCAP 148N
LLB BLACKCAP 98H

Bred to Crescent Creek Chizzlar 10A on June 4, 2015. Exposed to Early Sunset Settler 28B from June 11 to August 22, 2015.

BW: 78 lbs. Adj WW: 605 lbs. Adj YW: 894 lbs.

EPDs	BW	WW	YW	Milk	TM	CE	MCE
	1.3	31	61	20	39	2.5	8.0

S A V 8180 TRAVELER 004 AMF NHF CAF DMF DWF OSF DDF
S A V MAY 2410
S A F 598 BANDO 5175 AMF CAC DDF
LOCUST GROVE CT BLACKBIRD 2F
SITZ ALLIANCE 6595 AMF NHF DMF CAF DDF
REMITALL NEONIA 42J
PAT TEX 118F
DOUBLE J BLACKCAP 98W

52 - 606Z

RJG 606Z 1881946

Nordal 66U *Pride* 606Z

Apr. 20, 2012 Female

S A V NET WORTH 4200 AMF NHF CAF DDF
LOCUST GROVE NET WORTH 17U
LOCUST GROVE BLACKBIRD 7M CAF

BLACK RIDGE EDITION 2S
HILOW PRIDE 66U
HILOW PRIDE 20R

Exposed to Greenwood Accelerator 4A from June 4 to August 26, 2015.

BW: 86 lbs. Adj WW: 723 lbs. Adj YW: 983 lbs.

EPDs	BW	WW	YW	Milk	TM	CE	MCE
	3.7	50	83	22	45	5.5	9.5

S A V 8180 TRAVELER 004 AMF NHF CAF DMF DWF OSF DDF
S A V MAY 2410
S A F 598 BANDO 5175 AMF CAC DDF
LOCUST GROVE CT BLACKBIRD 2F
HOFF FIRST EDITION 058 242 NHF AMF
LADY OF PEAK DOT 748L
PEAK DOT NEW TREND 74M
HILOW PRIDE 24H

53 - 228Z

RJG 228Z 1770978

Nordal 29P *Queen Mother* 228Z

Apr. 5, 2012 Female

S A V NET WORTH 4200 AMF NHF CAF DDF
LOCUST GROVE NET WORTH 17U
LOCUST GROVE BLACKBIRD 7M CAF

NUHOPE 5175 PHANTOM 2M
WIL-MAR QUEEN MOTHER 23P
VALLEYSTAR QUEEN MOTHER 2A

Exposed to HA Black Jack 4590 from June 11 to August 26, 2015.

BW: 74 lbs. Adj WW: 640 lbs. Adj YW: 878 lbs.

EPDs	BW	WW	YW	Milk	TM	CE	MCE
	0.9	35	64	21	43	1.0	5.5

S A V 8180 TRAVELER 004 AMF NHF CAF DMF DWF OSF DDF
S A V MAY 2410
S A F 598 BANDO 5175 AMF CAC DDF
LOCUST GROVE CT BLACKBIRD 2F
S A F 598 BANDO 5175 AMF CAC DDF
NUHOPE EXT 320F PHANTOM 109H
VALLEYSTAR ORION 46X
VALLEYSTAR QUEEN MOTHER 21U

Health

All cattle are on the Pfizer Gold program and up to date on Black Leg. All calves will be boosted and Blackleg. All cattle will be poured with Ivermectin before sale.

All heifers, purebred and commercial will have their first dose of scour vaccine.

"BETSY 12R" COW FAMILY

LOT 54 - RJG 12Z, LOT 55 - RJG 121B, LOT 56 - RJG 12A

The Betsy 12R family has proven to be an interesting combination with Net Worth 17U. These females are the right type to be productive and maintenance free into the future.

54 - 12Z

Nordal 12R *Betsy* 12Z

RJG 12Z 1879391 Mar. 3, 2012 Female

S A V NET WORTH 4200 AMF NHF CAF DDF
LOCUST GROVE NET WORTH 17U
 LOCUST GROVE BLACKBIRD 7M CAF

ELLIOTT MR. BOND 34N
CARONHILL BETSY 12'05
 DM BETSY 45L

S A V 8180 TRAVELER 004 AMF NHF CAF DMF DWF OSF DDF
 S A V MAY 2410
 S A F 598 BANDO 5175 AMF CAC DDF
 LOCUST GROVE CT BLACKBIRD 2F
 BENCHMARK MAGIC MAN 007
 JNH BLACKBIRD 88H
 SPEAR U 616 959
 DM BETSY 10C

Exposed to HA Black Jack 4590 from June 11 to August 26, 2015.

BW: 82 lbs. Adj WW: 579 lbs. Adj YW: 820 lbs.

EPDs	BW	WW	YW	Milk	TM	CE	MCE
(PE)	3.4	43	77	20	42	4.0	7.0

AVERAGE BLACK ANGUS EPD'S

BW	WW	YE	Milk
2.4	44	79	19

TM	CE	MCE
41	2.9	6.2

55 - 121B

Nordal 12Z *Betsy* 121B

RJG 121B 1881950 Mar. 29, 2014 Female

BUSHES SUPER TANKER 414
JS TANKER 37
 HOWE MS PRIDE 136P

LOCUST GROVE NET WORTH 17U
NORDAL 12R BETSY 12Z
 CARONHILL BETSY 12'05

S A V BISMARCK 5682 AMF NHF CAF DDF
 BUSHES DAKOTA BLACKBIRD 5140 DDF
 EBON HILL LIBERTY 13'01
 HOWE MS PRIDE 61K
 S A V NET WORTH 4200 AMF NHF CAF DDF
 LOCUST GROVE BLACKBIRD 7M CAF
 ELLIOTT MR. BOND 34N
 DM BETSY 45L

Bred to Jindra Double Vision on May 31, 2015. Exposed to Early Sunset Settler 28B from June 10 to August 26, 2015.

BW: 70 lbs. Adj WW: 699 lbs. Adj YW: 848 lbs.

EPDs	BW	WW	YW	Milk	TM	CE	MCE
(PE)	3.2	44	82	19	41	4.0	6.0

56 - 12A

Nordal 12R *Betsy* 12A

RJG 12A 1879407 Apr. 9, 2013 Female

S A V NET WORTH 4200 AMF NHF CAF DDF
LOCUST GROVE NET WORTH 17U
 LOCUST GROVE BLACKBIRD 7M CAF

ELLIOTT MR. BOND 34N
CARONHILL BETSY 12'05
 DM BETSY 45L

S A V 8180 TRAVELER 004 AMF NHF CAF DMF DWF OSF DDF
 S A V MAY 2410
 S A F 598 BANDO 5175 AMF CAC DDF
 LOCUST GROVE CT BLACKBIRD 2F
 BENCHMARK MAGIC MAN 007
 JNH BLACKBIRD 88H
 SPEAR U 616 959
 DM BETSY 10C

Exposed to LLB 44U Blackman 825A from May 30 to August 26, 2015.

BW: 78 lbs. Adj WW: 664 lbs. Adj YW: 854 lbs.

EPDs	BW	WW	YW	Milk	TM	CE	MCE
(PE)	3.4	43	77	20	42	4.0	7.0

57 - 727Z

Nordal 127T *Queen Ruth* 127Z

RJG 727Z 1879681 Apr. 5, 2012 Female

S A V NET WORTH 4200 AMF NHF CAF DDF
LOCUST GROVE NET WORTH 17U
 LOCUST GROVE BLACKBIRD 7M CAF

RR 7407 RAINMAKER 2154
NORDAL 127N QUEEN RUTH 127T
 CRESCENT CREEK QUEEN RUTH 127N

S A V 8180 TRAVELER 004 AMF NHF CAF DMF DWF OSF DDF
 S A V MAY 2410
 S A F 598 BANDO 5175 AMF CAC DDF
 LOCUST GROVE CT BLACKBIRD 2F
 A A R RAINMAKER 7407
 H A CONCEPCIONA 0224
 CRESCENT CREEK CHIEF 72L
 CRESCENT CREEK QUEEN RUTH 44J

Queen Ruth 727Z is a young female loaded with maternal qualities, and in her first calving, proved that point. Net Worth 17U daughters are exceptional producers. With the added value of Rainmaker 2154, 727Z's daughter by Tanker 37Z sells. This family is one of our most prolific producers with over ten Queen Ruth females in production. Exposed to Greenwood Accelerator 4A from June 4 to August 26, 2015.

BW: 80 lbs. Adj WW: 662 lbs. Adj YW: 868 lbs.

EPDs	BW	WW	YW	Milk	TM	CE	MCE
(PE)	3.0	47	87	27	51	1.0	7.0

58 - 627B

Nordal 727Z *Queen Ruth* 627B

RJG 627B 1881955 Apr. 15, 2014 Female

BUSHES SUPER TANKER 414
JS TANKER 37
 HOWE MS PRIDE 136P

LOCUST GROVE NET WORTH 17U
NORDAL 127T QUEEN RUTH 127Z
 NORDAL 127N QUEEN RUTH 127T

S A V BISMARCK 5682 AMF NHF CAF DDF
 BUSHES DAKOTA BLACKBIRD 5140 DDF
 EBON HILL LIBERTY 13'01
 HOWE MS PRIDE 61K
 S A V NET WORTH 4200 AMF NHF CAF DDF
 LOCUST GROVE BLACKBIRD 7M CAF
 RR 7407 RAINMAKER 2154
 CRESCENT CREEK QUEEN RUTH 127N

Bred to MAR Innovation on May 26, 2015. Exposed to Early Sunset Settler 28B from June 14 to August 26, 2015.

BW: 72 lbs. Adj WW: 727 lbs. Adj YW: 930 lbs.

EPDs	BW	WW	YW	Milk	TM	CE	MCE
(PE)	2.8	46	87	23	46	3.0	6.0

"NET WORTH 17U" DAUGHTERS

LOT 59 - RJG 152Z, LOT 60 - RJG 241Z, LOT 61 - RJG 468Z, LOT 62 - RJG 910Z

Net Worth 17U has done an impressive job throughout his breeding career. We have used him extensively and he has proven he can produce daughters that are very capable to be mated to a variety of sire types with excellent results. They are fertile, easy keeping and heavy milking.

59 - 152Z

Nordal 152U *Queen* 152Z

RJG 152Z 1883138 Apr. 26, 2012 Female

S A V NET WORTH 4200 AMF NHF CAF DDF
LOCUST GROVE NET WORTH 17U
LOCUST GROVE BLACKBIRD 7M CAF

EARLY SUNSET GIANT JOE 119R
EARLY SUNSET QUEEN 152U
EARLY SUNSET QUEEN 75H

Exposed to LLB 44U Blackman 825A from June 8 to August 26, 2015.

BW: 84 lbs. Adj WW: 682 lbs. Adj YW: 848 lbs.

EPDs	BW	WW	YW	Milk	TM	CE	MCE
	3.3	43	76	18	39	2.5	6.0

S A V 8180 TRAVELER 004 AMF NHF CAF DMF DWF OSF DDF
S A V MAY 2410
S A F 598 BANDO 5175 AMF CAC DDF
LOCUST GROVE CT BLACKBIRD 2F
ZANIABAR GIANT JOE 47K
BRIMAR ANNIE K 86J
ANKONIAN ONE
EARLY SUNSET QUEEN 43F

60 - 241Z

Nordal 24U *Barbara* 241Z

RJG 241Z 1879396 Apr. 9, 2012 Female

S A V NET WORTH 4200 AMF NHF CAF DDF
LOCUST GROVE NET WORTH 17U
LOCUST GROVE BLACKBIRD 7M CAF

G A R US PREMIUM BEEF NHF AMF CAF DDF
EARLY SUNSET BARBARA 24U
EARLY SUNSET BARBARA 47J

Bred to Jindra Double Vision on June 11, 2015. Exposed to Greenwood Accelerator 4A from June 14 to August 26, 2015.

BW: 72 lbs. Adj WW: 672 lbs. Adj YW: 834 lbs.

EPDs	BW	WW	YW	Milk	TM	CE	MCE
	0.4	31	63	22	40	3.5	7.5

S A V 8180 TRAVELER 004 AMF NHF CAF DMF DWF OSF DDF
S A V MAY 2410
S A F 598 BANDO 5175 AMF CAC DDF
LOCUST GROVE CT BLACKBIRD 2F
G A R PRECISION 1680 NHC AMC
G A R EXT 2928 AMF NHF
B & L LOVANA 5065
EARLY SUNSET BARBARA 9T

61 - 468Z

Nordal 368W *Lass* 468Z

RJG 468Z 1879704 Apr. 12, 2012 Female

S A V NET WORTH 4200 AMF NHF CAF DDF
LOCUST GROVE NET WORTH 17U
LOCUST GROVE BLACKBIRD 7M CAF

CRESCENT CREEK IDEAL 90S
NORDAL 368S BLACK LASS 368W (RC)
RED DEER RANGE LASS 368S

RED CARRIER. LASS 468Z is very unique. We have taken two of our best performance/carcass bulls and mated them with one of our best Red Angus cows resulting in Lass 468Z. She has matured into one of our very best "Z" dams. Bred to Cole Creek Cedar Ridge 1V on June 7, 2015. Exposed to Greenwood Accelerator 4A from June 14 to August 26, 2015.

BW: 80 lbs. Adj WW: 697 lbs. Adj YW: 984 lbs.

EPDs	BW	WW	YW	Milk	TM	CE	MCE
(PE)	3.0	44	73	23	45	1.4	4.2

S A V 8180 TRAVELER 004 AMF NHF CAF DMF DWF OSF DDF
S A V MAY 2410
S A F 598 BANDO 5175 AMF CAC DDF
LOCUST GROVE CT BLACKBIRD 2F
CAR IDEAL 061
CRESCENT CREEK LADY BATE 6L
RED L-DEE DIVIDEND JR 141K
RED DEER RANGE LANA 113E

62 - 910Z

Nordal 910M *Dana* 910Z

RJG 910Z 1882826 Apr. 6, 2012 Female

S A V NET WORTH 4200 AMF NHF CAF DDF
LOCUST GROVE NET WORTH 17U
LOCUST GROVE BLACKBIRD 7M CAF

GDAR QUANTUM 963
JUST ROCK 963 DANA 910M
CRESCENT CREEK DANA 120K

Exposed to LLB 44U Blackman 825A from June 8 to August 26, 2015.

BW: 80 lbs. Adj WW: 658 lbs. Adj YW: 818 lbs.

EPDs	BW	WW	YW	Milk	TM	CE	MCE
	2.5	37	74	20	39	1.5	7.0

S A V 8180 TRAVELER 004 AMF NHF CAF DMF DWF OSF DDF
S A V MAY 2410
S A F 598 BANDO 5175 AMF CAC DDF
LOCUST GROVE CT BLACKBIRD 2F
C H QUANTUM 3330
G D A R MISS KEM 080
SASKALTA BARDOLENE 61F
CRESCENT CREEK DANA 81G



"BLACKCAP 55S" COW FAMILY

LOT 63 - 55Z, LOT 64 - 55B

Black Cap 55S has placed herself as one of our very best with her production. She is a model Angus cow that has produced a top selling bull and an excellent group of daughters. Her Net Worth 17U daughter sells as 55Z and her Free Wheeler 68Y daughter as 55B.



B
L
A
C
K

A
N
G
U
S

63 - 55Z

Nordal 55S *Blackcap* 55Z

RJG 55Z 1880517 Mar. 14, 2012 Female

S A V NET WORTH 4200 AMF NHF CAF DDF
LOCUST GROVE NET WORTH 17U
LOCUST GROVE BLACKBIRD 7M CAF

S A V 8180 TRAVELER 004 AMF NHF CAF DMF DWF OSF DDF
S A V MAY 2410
S A F 598 BANDO 5175 AMF CAC DDF
LOCUST GROVE CT BLACKBIRD 2F
BLACK RIDGE W WIDESPREAD 2K
HARMON BLACK LADY 7048
MCS TEX 26K
MCS BLACKCAP 10H

Exposed to LLB 44U Blackman 825A from June 8 to August 26, 2015.

BW: 86 lbs. Adj WW: 614 lbs. Adj YW: 837 lbs.

EPDs	BW	WW	YW	Milk	TM	CE	MCE
(PE)	2.5	43	79	19	41	3.5	7.0

64 - 55B

Nordal 55S *Blackcap* 55B

RJG 55B 1880217 Apr. 6, 2014 Female

LLB FREE WHEELER 268S
LLB 238S FREE WHEELER 60Y
LLB BARBARA MCHENRY 901G

HF FREE WHEELER 191N
LLB NITCHE 637J
DOUBLE J RITO 348D
LLB BARBARA MCHENRY 4U
BLACK RIDGE W WIDESPREAD 2K
HARMON BLACK LADY 7048
MCS TEX 26K
MCS BLACKCAP 10H

Exposed to Early Sunset Settler 28B from June 5 to August 26, 2015.

BW: 78 lbs. Adj WW: 682 lbs. Adj YW: 821 lbs.

EPDs	BW	WW	YW	Milk	TM	CE	MCE
(PE)	3.3	39	66	11	31	-2.0	1.0

65 - 338A

Nordal 38W *Pride* 338A

RJG 338A 1879408 Apr. 15, 2013 Female

S A V NET WORTH 4200 AMF NHF CAF DDF
LOCUST GROVE NET WORTH 17U
LOCUST GROVE BLACKBIRD 7M CAF

S A V 8180 TRAVELER 004 AMF NHF CAF DMF DWF OSF DDF
S A V MAY 2410
S A F 598 BANDO 5175 AMF CAC DDF
LOCUST GROVE CT BLACKBIRD 2F
L T 598 BANDO 9074 AMF NHF CAF DDF
EASTONDALE BLACKBIRD 99'05
HILOW TITAN 13P
HOWE MS PRIDE 76J

BELL 9074 BANDO 19T
BELL PRIDE 33W
BELL PRIDE 51T

Pride 338A is a well balanced female as a young two year old producing an excellent Tanker daughter. She is also balanced in her EPD profile. Her dam traces back to the Bando 9074 sire.

Exposed to LLB 44U Blackman 825A from June 4 to August 26, 2015.

BW: 82 lbs. Adj WW: 663 lbs. Adj YW: 827 lbs.

EPDs	BW	WW	YW	Milk	TM	CE	MCE
	3.0	49	82	25	49	3.0	8.0

66 - 72A

Nordal 72R *Queen* 72A

RJG 72A 1880519 Mar. 13, 2013 Female

S A V NET WORTH 4200 AMF NHF CAF DDF
LOCUST GROVE NET WORTH 17U
LOCUST GROVE BLACKBIRD 7M CAF

S A V 8180 TRAVELER 004 AMF NHF CAF DMF DWF OSF DDF
S A V MAY 2410
S A F 598 BANDO 5175 AMF CAC DDF
LOCUST GROVE CT BLACKBIRD 2F
G D A R TRAVELER 044 AMF NHF CAF DDF
G A R PRECISION 2536 NHF AMC
BLACKTOF MUSCLES 26B
EARLY SUNSET QUEEN MOTHER 38S

G A R GRID MAKER AMF NHF CAF DDF
EARLY SUNSET QUEEN 72R
EARLY SUNSET QUEEN 18H

Queen 72A is a superior combination of solid carcass genetics. Mating Net Worth 17U to Grid Maker daughter, Queen 72R, has infused proven carcass merit in this individual. The dam, Queen 72R is in the top 10% for REA and the top 2% for fat. Exposed to LLB 44U Blackman 825A from May 30 to August 26, 2015.

BW: 74 lbs. Adj WW: 638 lbs. Adj YW: 827 lbs.

EPDs	BW	WW	YW	Milk	TM	CE	MCE
	1.5	37	74	17	37	1.5	8.0

67 - 303A

Nordal 303U **Tibbie** 303A

RJG 303A 1879409 Apr. 23, 2013 Female

S A V NET WORTH 4200 AMF NHF CAF DDF
LOCUST GROVE NET WORTH 17U
 LOCUST GROVE BLACKBIRD 7M CAF
 WESTERN WIDESPREAD 1L
MVF TIBBIE 303U
 MVF TIBBIE 176G

S A V 8180 TRAVELER 004 AMF NHF CAF DMF DWF OSF DDF
 S A V MAY 2410
 S A F 598 BANDO 5175 AMF CAC DDF
 LOCUST GROVE CT BLACKBIRD 2F
 WHITESTONE WIDESPREAD MB AMF NHF
 BDM BLUE LADY ERICA 126'95
 RITO 9FB3 OF 5H11 FULLBACK AMF NHF CAF DDF
 MVF TIBBIE 14C

Tibbie 303A comes as one of the most promising Net Worth 17U daughters. She very capably raised a top Tanker 37Z daughter. She holds a very well balanced set of EPD's which matches her production capabilities. **Exposed to LLB 44U Blackman 825A from June 5 to August 26, 2015.**

BW: 80 lbs. Adj WW: 681 lbs. Adj YW: 807 lbs.

EPDs	BW	WW	YW	Milk	TM	CE	MCE
	2.8	48	83	25	50	2.0	8.5



Christina hanging out with Garth Brooks in Saskatoon

“BARDELLA 30T” COW FAMILY

LOT 68 - RJG 30A, LOT 69 - RJG 30B

Bardella 30T daughters by Emblazon 109X Bardella 30A and Net Worth 17U – Bardella 30B. The Bardella's are moderate in frame yet carry the depth of rib and width with lots of natural thickness. A very complete pair of daughters Bardella 30T.

68 - 30A

Nordal 30T **Bardella** 30A

RJG 30A 1879402 Mar. 28, 2013 Female

BRONYX EMBLAZON 58T
CRESCENT CREEK EMBLAZON 109X
 CRESCENT CREEK PRIDE 27M
 EARLY SUNSET GIANT JOE 119R
EARLY SUNSET BARDELLA 30T
 EARLY SUNSET BARDELLA 71R

B C C-J C L EMBLAZON 038-287
 CRESCENT CREEK ROSEBUD 25R
 CHICO KODIAK 93K
 CRESCENT CREEK PRIDE 10E
 ZANIABAR GIANT JOE 47K
 BRIMAR ANNIE K 86J
 EARLY SUNSET SOLUTION 5M
 MIDNITE BARDELLA 120'99

Exposed to Early Sunset Settler 28B from June 5 to August 26, 2015.

BW: 82 lbs. Adj WW: 629 lbs. Adj YW: 907 lbs.

EPDs	BW	WW	YW	Milk	TM	CE	MCE
	3.1	37	64	15	35	-3.5	1.0

69 - 30B

Nordal 30T **Bardella** 30B

RJG 30B 1872880 Apr. 9, 2014 Female

S A V NET WORTH 4200 AMF NHF CAF DDF
LOCUST GROVE NET WORTH 17U
 LOCUST GROVE BLACKBIRD 7M CAF
 EARLY SUNSET GIANT JOE 119R
EARLY SUNSET BARDELLA 30T
 EARLY SUNSET BARDELLA 71R

S A V 8180 TRAVELER 004 AMF NHF CAF DMF DWF OSF DDF
 S A V MAY 2410
 S A F 598 BANDO 5175 AMF CAC DDF
 LOCUST GROVE CT BLACKBIRD 2F
 ZANIABAR GIANT JOE 47K
 BRIMAR ANNIE K 86J
 EARLY SUNSET SOLUTION 5M
 MIDNITE BARDELLA 120'99

Bred to MAR Innovation 251 on May 26, 2015. Exposed to Early Sunset Settler 28B from June 5 to August 26, 2015.

BW: 84 lbs. Adj WW: 710 lbs. Adj YW: 917 lbs.

EPDs	BW	WW	YW	Milk	TM	CE	MCE
	2.5	39	69	22	43	1.5	5.5

70 - 236A

Nordal 336X **Ruby** 236A

RJG 236A 1879405 Apr. 4, 2013 Female

BRONYX EMBLAZON 58T
CRESCENT CREEK EMBLAZON 109X
 CRESCENT CREEK PRIDE 27M
 CRESCENT CREEK IDEAL 90S
NORDAL 36R RUBY 36X
 EARLY SUNSET RUBY 36R

B C C-J C L EMBLAZON 038-287
 CRESCENT CREEK ROSEBUD 25R
 CHICO KODIAK 93K
 CRESCENT CREEK PRIDE 10E
 CAR IDEAL 061
 CRESCENT CREEK LADY BATE 6L
 SHADY BROOK TRAV 8180 508J
 EARLY SUNSET RUBY 120M

Ruby 236A holds a pedigree which is full of proven sires that are rich in heritage; Emblazon 038E, Car Ideal 061, Traveler 8180. The Ruby 36R line has produced many of our top bulls over the years. This family is one of our favourites. **Bred to Soo Line Motive on June 10, 2015. Exposed to LLB 44U Blackman 825A from June 14 to August 26, 2015.**

BW: 80 lbs. Adj WW: 667 lbs. Adj YW: 892 lbs.

EPDs	BW	WW	YW	Milk	TM	CE	MCE
(PE)	4.0	44	79	17	39	0.0	3.0

71 - 257A

Nordal 257N **Princess** 257A

RJG 257A 1881949 May, 23, 2013 Female

BRONYX EMBLAZON 58T
CRESCENT CREEK EMBLAZON 109X
 CRESCENT CREEK PRIDE 27M
 LLB LEGEND 22K
LLB PRINCESS 257N
 PAT PRINCESS 43E

B C C-J C L EMBLAZON 038-287
 CRESCENT CREEK ROSEBUD 25R
 CHICO KODIAK 93K
 CRESCENT CREEK PRIDE 10E
 BACK ROADS 1418 LEGEND 1582
 DOUBLE J ERICA 307B
 D D A FAHREN 51
 PAT PRINCESS 314C

Here is our top ranked two year old Emblazon daughter. She produced one of our top weaning weights in her Tanker sired son. Princess 257A has a long career ahead of her as her dam produced 11 straight progeny. **Exposed to Greenwood Accelerator 4A from June 14 to August 26, 2015.**

BW: 86 lbs. Adj WW: 681 lbs. Adj YW: 879 lbs.

EPDs	BW	WW	YW	Milk	TM	CE	MCE
	4.0	43	75	15	37	-3.5	1.0

B
L
A
C
K
A
N
G
U
S

72 - 235A

RJG 235A 1884251 Jan. 30, 2013 Female

N BAR EMULATION EXT AMF NHF CAF DDF
LEACHMAN RIGHT TIME AMF DMF
 LEACHMAN ERICA 0025

KILMAURS DAQUANTAE 1H
LLB MCHENRY BARBARA 235L
 LLB BARBARA MCHENRY 901G

McHenry Barbara 235L has been designated as a premier dam since 2008. She is currently raising her twelfth calf. Her daughter, 235A by EXT, produced one of our heaviest and highest indexing heifer calves on her first calf. 235L is a maternal sister to our herd sire Free Wheeler 68Y. Exposed to HA Black Jack 4690 from June 11 to August 26, 2015.

BW: 80 lbs. Adj WW: 718 lbs. Adj YW: 948 lbs.

EPDs	BW	WW	YW	Milk	TM	CE	MCE
(PE)	3.0	41	69	17	37	0.0	6.5

Nordal 235L *McHenry* Barbara

EMULATION N BAR 5522
 N BAR PRIMROSE 2424
 TEHAMA BANDO 155 AMF NHF CAF DDF
 LEACHMAN ERICA 8058
 R R DAQUANTAE 789E AMF NHF CAF DDF
 KILMAURS MISS KELLY
 DOUBLE J RITO 348D
 LLB BARBARA MCHENRY 4U

73 - 712A

RJG 712A PENDING Jan. 26, 2013 Female

DOUBLE AA BLACKMAN 252'96
DOUBLE AA OLD POST BANDOLIER @FAMFDDFNF(4)
 DOUBLE AA ANNIE K 548'99

DRYLAND ICEBERG 411 AMF
LLB EULIMA 412T
 LLB EULIMA 251N

EuLima 712A is a direct daughter of the legendary Old Post Bandolier. Her dam EuLima 412T has earned the right to be one of our front pasture cows. The influence of the Iceberg sire is unique and highly predictable. EuLima 712A is one of our very favourite 2013 models. Bred to Crescent Creek Chizzlar 10A on May 19, 2015.

BW: 81 lbs. Adj WW: 734 lbs. Adj YW: 953 lbs.

EPDs	BW	WW	YW	Milk	TM	CE	MCE
(PE)	4.8	41	75	13	34	-3.5	5.0

Nordal 412T *EuLima* 712A

DOUBLE AA BLACKMAN 24'93
 DOUBLE AA ANNIE K 620'91
 JOHNSTON BANDOLIER 849E
 DOUBLE AA ANNIE K 280'96
 CAR ICEBERG 056
 CRESCENT CREEK DUCHESS 88E
 DCC JAMAICAN 3J
 PAT EULIMA 48D

"LAWN 25S" DAUGHTERS

LOT 74 - RJG 251Z, LOT 75 - RJG 25B

The Sitz Heritage 10709 sired Lawn 25S has become one of our most trusted females. She holds an interesting combination of Canadian genetics. The daughter 251Z is sired by a Tom Boy 509R son from the legendary Crescent Creek Rosebud 115F female. Lawn 25B is sired by Emblazon 109X providing an interesting genetic combination.

74 - 251Z

RJG 251Z 1879398 May 1, 2012 Female

FIGURE 8 ANGUS TOM BOY 509R
MWC TOM BOY 121U
 CRESCENT CREEK ROSEBUD 115F

SITZ HERITAGE 10709
MWC MISS HERITAGE 25S
 ANGUS ACRES LAWN 85Z

Exposed to LLB 44U Blackman 825A from June 11 to August 26, 2015.

BW: 76 lbs. Adj WW: 648 lbs. Adj YW: 851 lbs.

EPDs	BW	WW	YW	Milk	TM	CE	MCE
	1.9	25	45	12	29	-1.0	6.5

Nordal 25S *Lawn* 251Z

ADELPHI TOM BOY 20H
 FIGURE 8 ANGUS LADY 604J
 RITO 8094 PRAIRIELANE 2060 AMF
 CRESCENT CREEK ROSEBUD 4C
 SITZ ALLIANCE 6595 AMF NHF DMF CAF DDF
 SITZ EMMA E 707
 TOMIL VON ERIC GR 39W
 ANGUS ACRES LAWN 85W

75 - 25B

RJG 25B 1880221 Apr. 13, 2014 Female

BRONYX EMBLAZON 58T
CRESCENT CREEK EMBLAZON 109X
 CRESCENT CREEK PRIDE 27M

SITZ HERITAGE 10709
MWC MISS HERITAGE 25S
 ANGUS ACRES LAWN 85Z

Bred to HA Black Jack 4590 on May 21, 2015. Exposed to Early Sunset Settler 28B from June 5 to August 22, 2015.

BW: 76 lbs. Adj WW: 625 lbs. Adj YW: 842 lbs.

EPDs	BW	WW	YW	Milk	TM	CE	MCE
	1.2	33	64	14	35	-5.5	1.5

Nordal 25S *Lawn* 25B

B C C-J C L EMBLAZON 038-287
 CRESCENT CREEK ROSEBUD 25R
 CHICO KODIAK 93K
 CRESCENT CREEK PRIDE 10E
 SITZ ALLIANCE 6595 AMF NHF DMF CAF DDF
 SITZ EMMA E 707
 TOMIL VON ERIC GR 39W
 ANGUS ACRES LAWN 85W





76 - 5A

Crescent Creek *Rosebud* 5A

WOS 5A 1738034 Jan. 16, 2013 Female

S ALLIANCE 3313 AMF
S CHISUM 6175 AMF NHF CAF DDF
 S GLORIA 464

B C C-J C L EMBLAZON 038-287
CRESCENT CREEK ROSEBUD 30T
 CRESCENT CREEK ROSEBUD 7R

The pedigree in this young female does not get much better. A direct daughter of Chisum 6175 and the immortal Rosebud 115F on her dam side. Rosebud 5A done an outstanding job on her first daughter by the Bush's Tanker son, Tanker 37Z. She is the same genetic combination as our herd sire Chizzler, who was the top seller in Crescent Creeks 2014 sale. **Bred to LLB 44U Blackman 825A on June 11 and exposed to him from June 10 to August 26, 2015.**

BW: 78 lbs. Adj WW: 582 lbs. Adj YW: 809 lbs.

EPDs	BW	WW	YW	Milk	TM	CE	MCE
	0.6	54	95	15	42	6.0	12.0

PAWS UP ALLIANCE 9561
 PAWS UP 9048 EMULATION EXT
 S ECLIPSE 169
 S GLORIA 209
 O C C EMBLAZON 854E OSF AMF NHF CAF DMF DDF
 B C C 1531 ELDORENE 826-038
 SITZ HERITAGE 10709
 CRESCENT CREEK ROSEBUD 115F

78 - 303Z

F V *Rosebud* FA 303Z

FV 303Z 1694346 Mar. 11, 2012 Female

SITZ TRAVELER 8180 AMF NHF CAF DDF
S A V FINAL ANSWER 0085 AMF NHF CAF DDF
 S A V EMULOUS 8145 CAF

S A V NET WORTH 4200 AMF NHF CAF DDF
FV ROSEBUD NW 80X
 F V 4336 ROSEBUD 440S

Rosebud 303Z is a guarantee of the calving ease of Final Answer coupled with a moderate frame. She is a gem to work with and has produced two solid young females. She sells bred to the Innovation sire. **Bred to MAR Innovation 251 on June 11, 2015. Exposed to Greenwood Accelerator 4A from June 15 to August 26, 2015.**

BW: 72 lbs. Adj WW: 548 lbs.

EPDs	BW	WW	YW	Milk	TM	CE	MCE
	1.6	57	98	21	50	8.0	10.0

G D A R TRAVELER 71 AMF NHF CAF DDF
 SITZ EVERELDA ENTENSE 1137
 BON VIEW BANDO 598 AMF CAC DDF
 S A V SKY EMULOUS 2124
 S A V 8180 TRAVELER 004 AMF NHF CAF DMF DWF OSF DDF
 S A V MAY 2410
 S A V 004 DENSITY 4336 AMF NHF CAF DDF (EE)
 F V RITO ROSEBUD 185K

77 - 308Z

F V *Rosebud* FA 308Z

FV 308Z 1693053 Mar. 15, 2012 Female

SITZ TRAVELER 8180 AMF NHF CAF DDF
S A V FINAL ANSWER 0085 AMF NHF CAF DDF
 S A V EMULOUS 8145 CAF

S A V NET WORTH 4200 AMF NHF CAF DDF
FV ROSEBUD NW 80X
 F V 184K ROSEBUD 299T

A standout of trait leading Final Answer daughter with the Net Worth influence. She comes with her Chizzlar daughter at side that shows the top rated capabilities of her parentage. If you want breed leading genetics and the numbers to back them up here is the combination on paper and the physical presence in front of you. **Bred to LLB 44U Blackman 825A on June 12, 2015. Exposed to Greenwood Accelerator 4A from June 20 to August 26, 2015.**

BW: 75 lbs. Adj WW: 558 lbs.

EPDs	BW	WW	YW	Milk	TM	CE	MCE
	2.4	57	100	25	54	5.0	8.0

G D A R TRAVELER 71 AMF NHF CAF DDF
 SITZ EVERELDA ENTENSE 1137
 BON VIEW BANDO 598 AMF CAC DDF
 S A V SKY EMULOUS 2124
 S A V 8180 TRAVELER 004 AMF NHF CAF DMF DWF OSF DDF
 S A V MAY 2410
 JOHNSTON BANDO 184K
 F V 32F ROSEBUD 164J

79 - 0403Z

LLB McHenry *Barbara* 0403Z

LLB 0403Z 1687684 Jan. 27, 2012 Female

TC GRID TOPPER 355 AMF NHF CAF DDF
TIMBER TRAIL GRIDLOCK
 SANE SURV JESTRESS 206P

FIGURE 8 ANGUS TOM BOY 509R
LLB MCHENRY BARBARA 95W
 LLB MCHENRY BARBARA 503S

McHenry Barbara 0403Z is sired by the performance legend in the LLB program, Timbertrail Gridlock. 0403Z raised over #3 ranking bull calf in 2015 by Free Wheeler 68Y. We are impressed by the extra body capacity and length of the Gridlock progeny. This female sports one of the best designed and high volume udder of our herd. She has the performance and maternal values complete in one package. **Exposed to Greenwood Accelerator 4A from June 4 to August 26, 2015**

BW: 60 lbs. Adj WW: 714 lbs. Adj YW: 809 lbs.

EPDs	BW	WW	YW	Milk	TM	CE	MCE
	1.4	51	89	11	37	6.0	9.0

G A R GRID MAKER AMF NHF CAF DDF
 TC PRIDE 8067 DDF
 WHITESTONE SURVIVOR N088 AMF NHF
 LSF DIR QUEEN JESTRESS
 ADELPHI TOM BOY 20H
 FIGURE 8 ANGUS LADY 604J
 RONAN TEX 56A
 LLB MCHENRY BARBARA 291N

77A - 308C

Nordal 308Z *Rosebud* 308C

RJG 308C 1882595 Apr. 18, 2015 Female

SIRE: Crescent Creek Chizzlar 10A BW: 80 lbs.

EPDs	BW	WW	YW	Milk	TM	CE	MCE
(PE)	2.7	59	105	25	55	2.0	8.5

B
L
A
C
K
A
N
G
U
S

LOT 80 - RJG 394B, LOT 81 - RJG 424B, LOT 82 - RJG 21B, LOT 83 - RJG 9B, LOT 84 - RJG 37B

This group of Emblazon 109X, 2014 model females are very uniform and correct in their make up. Each one of them is from a cow family that has produced an excellent set of sons that have went out to sire those Black calves that are always in high demand.

B
L
A
C
K

A
N
G
U
S



Lot 81

80 - 394B Nordal 394S *Lavender Lady* 394B

RJG 394B 1880220 Apr. 12, 2014 Female

BRONYX EMBLAZON 58T
CRESCENT CREEK EMBLAZON 109X
CRESCENT CREEK PRIDE 27M

CRESCENT CREEK CHIEF 56K
LLB LAVENDER LADY 894S
PAT LAVENDER LADY 394Z

B C C-J C L EMBLAZON 038-287
CRESCENT CREEK ROSEBUD 25R
CHICO KODIAK 93K
CRESCENT CREEK PRIDE 10E
DWAJO CHIEF 92E
CRESCENT CREEK LASSIE 1Y
LLB BRUTE
LAVENDER LADY OF PAT 206U

Bred to MAR Innovation 251 on June 1, 2015. Exposed to Early Sunset Settler 28B from June 15 to August 26, 2015.

BW: 82 lbs. Adj WW: 664 lbs. Adj YW: 828 lbs.

EPDs	BW	WW	YW	Milk	TM	CE	MCE
	3.1	34	64	14	32	-2.5	0.5

81 - 424B Nordal 524Y *Queen* 424B

RJG 424B 1882590 Apr. 1, 2014 Female

BRONYX EMBLAZON 58T
CRESCENT CREEK EMBLAZON 109X
CRESCENT CREEK PRIDE 27M

LOCUST GROVE NET WORTH 17U
NORDAL 24U QUEEN 524Y
NORDAL QUEEN 24U

B C C-J C L EMBLAZON 038-287
CRESCENT CREEK ROSEBUD 25R
CHICO KODIAK 93K
CRESCENT CREEK PRIDE 10E
S A V NET WORTH 4200 AMF NHF CAF DDF
LOCUST GROVE BLACKBIRD 7M CAF
CRESCENT CREEK IDEAL 90S
EARLY SUNSET QUEEN 72R

Exposed to Early Sunset Settler 28B from June 15 to August 26, 2015.

BW: 86 lbs. Adj WW: 706 lbs. Adj YW: 831 lbs.

EPDs	BW	WW	YW	Milk	TM	CE	MCE
(PE)	4.3	47	82	18	42	-2.0	3.4

82 - 21B Nordal 2T *Bride* 21B

RJG 21B 1872879 Apr. 8, 2014 Female

BRONYX EMBLAZON 58T
CRESCENT CREEK EMBLAZON 109X
CRESCENT CREEK PRIDE 27M

RR 7407 RAINMAKER 2154
NORDAL BRIDE 2T
LLB BRIDE 197N

B C C-J C L EMBLAZON 038-287
CRESCENT CREEK ROSEBUD 25R
CHICO KODIAK 93K
CRESCENT CREEK PRIDE 10E
A A R RAINMAKER 7407
H A CONCEPCIONA 0224
LEELA WIDESPREAD 4K
LLB BRIDE 282J

Bred to MAR Innovation 251 on June 11, 2015. Exposed to Early Sunset Settler 28B from June 15 to August 26, 2015.

BW: 88 lbs. Adj WW: 724 lbs. Adj YW: 824 lbs.

EPDs	BW	WW	YW	Milk	TM	CE	MCE
	3.8	48	81	19	42	-1.0	4.0

83 - 9B Nordal 9X *Eola* 9B

RJG 9B 1872877 Apr. 5, 2014 Female

BRONYX EMBLAZON 58T
CRESCENT CREEK EMBLAZON 109X
CRESCENT CREEK PRIDE 27M

HEATHCOTE DATELINE 523
MAPLE LINE EOLA 9X
MAPLE LINE EOLA 69N (RC)

B C C-J C L EMBLAZON 038-287
CRESCENT CREEK ROSEBUD 25R
CHICO KODIAK 93K
CRESCENT CREEK PRIDE 10E
CONNEALY DATELINE DDF
WATCHWIND VELURE LASS 166
LLB EZ 394F
RED MAPLE LINE EOLA 22K

Bred to Cole Creek Cedar Ridge 1V on June 11, 2015. Exposed to Early Sunset Settler 28B from June 15 to August 26, 2015.

BW: 72 lbs. Adj WW: 633 lbs. Adj YW: 818 lbs.

EPDs	BW	WW	YW	Milk	TM	CE	MCE
	0.9	31	58	16	34	0.0	4.5



Lot 82

84 - 37B

Nordal 37R *Heroine* 37B

RJG 37B 1882598 Apr. 12, 2014 Female

BRONYX EMBLAZON 58T
CRESCENT CREEK EMBLAZON 109X
 CRESCENT CREEK PRIDE 27M

B.B.A.R. HERO 1267
EASTONDALE HEROINE 37'05
 EASTONDALE HEROINE 99'03

B C C J C L EMBLAZON 038-287
 CRESCENT CREEK ROSEBUD 25R
 CHICO KODIAK 93K
 CRESCENT CREEK PRIDE 10E
 HERO 6267 OF R R 2418
 B.B.A.R. LADY MONOGRAM 167'99
 CJD SCOTCHMAN 10K
 EASTONDALE HEROINE 9'00

Bred to MAR Innovation 251 on May 24, 2015. Exposed to Early Sunset Settler 28B from June 15 to August 26, 2015.

BW: 86 lbs. Adj WW: 690 lbs. Adj YW: 849 lbs.

EPDs	BW	WW	YW	Milk	TM	CE	MCE
(PE)	3.4	44	69	21	45	-4.0	0.5



Lot 84

85 - 240B

Nordal 24X *Belle* 240B

RJG 240B 1880222 Apr. 14, 2014 Female

LLB FREE WHEELER 268S
LLB 268S FREE WHEELER 68Y
 LLB BARBARA MCHENRY 901G

MVF NET WORTH 113T
NORDAL 24P BELLE 24X
 KENOSSE PARK BELLE 24P

HF FREE WHEELER 191N
 LLB NITCHE 637J
 DOUBLE J RITO 348D
 LLB BARBARA MCHENRY 4U
 S A V NET WORTH 4200 AMF NHF CAF DDF
 MVF ROSEBUD 906N
 BELVIN KINGPIN 24'00
 KENOSSE PARK BELLE 126D

Bred to Cole Creek Cedar Ridge 1V on June 11, 2015. Exposed Early Sunset Settler 4A from June 15 to August 26, 2015.

BW: 76 lbs. Adj WW: 741 lbs. Adj YW: 927 lbs.

EPDs	BW	WW	YW	Milk	TM	CE	MCE
(PE)	4.9	45	71	15	38	-5.0	0.0

LOT 85 - RJG 240B, LOT 86 - RJG 204B, LOT 87 - RJG 304B

These Free Wheeler 68Y daughters are some of the deepest bodied, heavy muscled of the group. All though are uniform in their stature and soundness. Although we had a limited amount of Free Wheeler 68Y daughters enter production in 2015. He has proven he can increase maternal values in milking ability and perfect udder structure.

86 - 204B

Nordal 24U *Queen* 204B

RJG 204B 1880224 Apr. 19, 2014 Female

LLB FREE WHEELER 268S
LLB 268S FREE WHEELER 68Y
 LLB BARBARA MCHENRY 901G

CRESCENT CREEK IDEAL 90S
NORDAL QUEEN 24U
 EARLY SUNSET QUEEN 72R

HF FREE WHEELER 191N
 LLB NITCHE 637J
 DOUBLE J RITO 348D
 LLB BARBARA MCHENRY 4U
 CAR IDEAL 061
 CRESCENT CREEK LADY BATE 6L
 G A R GRID MAKER AMF NHF CAF DDF
 EARLY SUNSET QUEEN 18H

Bred to Cole Creek Cedar Ridge 1V on June 11, 2015. Exposed Early Sunset Settler 4A from June 15 to August 26, 2015.

BW: 80 lbs. Adj WW: 745 lbs. Adj YW: 921 lbs.

EPDs	BW	WW	YW	Milk	TM	CE	MCE
(PE)	4.5	41	66	13	33	-4.0	1.0

87 - 304B

Nordal 115U *Bardella* 304B

RJG 304B 1881957 Apr. 19, 2014 Female

LLB FREE WHEELER 268S
LLB 268S FREE WHEELER 68Y
 LLB BARBARA MCHENRY 901G

CRESCENT CREEK IDEAL 90S
NORDAL 115N BARDELLA 115U
 CRESCENT CREEK BARDELLA 115N

HF FREE WHEELER 191N
 LLB NITCHE 637J
 DOUBLE J RITO 348D
 LLB BARBARA MCHENRY 4U
 CAR IDEAL 061
 CRESCENT CREEK LADY BATE 6L
 SOUTHLAND POWERBALL 128K
 CRESCENT CR BARDELLA LASS 81J

Bred to MAR Innovation 251 on May 24, 2015. Exposed Early Sunset Settler 4A from June 15 to August 26, 2015.

BW: 82 lbs. Adj WW: 715 lbs. Adj YW: 863 lbs.

EPDs	BW	WW	YW	Milk	TM	CE	MCE
(PE)	5.1	41	66	14	34	-6.0	-1.0

88 - 721B

Nordal 127Y *Bellemere* 721B

RJG 721B 1883726 Apr. 13, 2014 Female

S A V NET WORTH 4200 AMF NHF CAF DDF
LOCUST GROVE NET WORTH 17U
 LOCUST GROVE BLACKBIRD 7M CAF

GEIS KODIAK 21'07 (EE)
GEIS BELLEMERE 127'11
 GEIS BELLEMERE 245'02 (RC)

S A V 8180 TRAVELER 004 AMF NHF CAF DMF DMF OSF DDF
 S A V MAY 2410
 S A F 598 BANDO 5175 AMF CAC DDF
 LOCUST GROVE CT BLACKBIRD 2F
 HF KODIAK 5R MAF AMF NHF CAF DDF
 GEIS JAY 27'02 (RC)
 RED GEIS POUNDMAKER 159'97
 GEIS BELLEMERE 23'96

A Net Worth 17U daughter from a Kodiak granddaughter. She is stout made with lots of rib and muscle. Bred to MAR Innovation 251 on May 27, 2015. Exposed Early Sunset Settler 4A from June 5 to August 26, 2015.

BW: 84 lbs. Adj WW: 717 lbs. Adj YW: 893 lbs.

EPDs	BW	WW	YW	Milk	TM	CE	MCE
(PE)	2.7	5.7	98	24	52	2.7	4.0



Lot 88

**B
L
A
C
K
A
N
G
U
S**

REFERENCE SIRES

B
L
A
C
K
A
N
G
U
S



Free Wheeler



Emblazon



Net Worth

LLB 268S *Free Wheeler* 68Y

LLB 68Y 1625514 Jan. 15, 2011 Male

HF FREE WHEELER 191N
LLB FREE WHEELER 268S
LLB NITCHIE 637J

DOUBLE J RITO 348D
LLB BARBARA MCHENRY 901G
LLB BARBARA MCHENRY 4U

TC FREEDOM 104 CAF AMF NHF DDF
DURALTA 14C ECHO 32E
MERIT LUCAS 7040
DOUBLE J NITCHIE 73D
DOUBLE J RITO 617A
DOUBLE J ERICA 335Z
LLB DIAMOND HIGH 042R
LLB BARBARA MCHENRY 106R

Free Wheeler 68Y was a lead off bull and high seller in LLB's 2012 sale. He is moderate framed with enormous depth and spring of rib. He is wide based and thick from end to end. Free Wheeler 68Y has seen limited use but the progeny we have to date are some of our best. His first daughters in production in 2015 are the heaviest milking two year olds in the group. Their udder structure and milk volume is absolutely impressive. All his sons measured to date have exceptional scrotal development.

BW: 90 lbs. Adj WW: 770 lbs.

EPDs	BW	WW	YW	Milk	TM	CE	MCE
	4.9	45	67	11	34	-6.0	-2.0

Crescent Creek *Emblazon* 109X

DTZ 109X 1548965 Feb. 10, 2010 Male

DDF
B C C-J C L EMBLAZON 038-287
BRONX EMBLAZON 58T
CRESCENT CREEK ROSEBUD 25R

CHICO KODIAK 93K
CRESCENT CREEK PRIDE 27M
CRESCENT CREEK PRIDE 10E

O C C EMBLAZON 854E OSF AMF NHF CAF DMF
B C C 1531 ELDORENE 826-038
RR SCOTCHMAN 2999
CRESCENT CREEK ROSEBUD 137N
WOODHILL CHECKMATE
CHICO ERICA KAY 33G
CRESCENT CREEK MAXIMUM 54C
CRESCENT CREEK PRIDE 33X

Emblazon 109X was purchased as the lead off and top selling bull from the 2011 Crescent Creek Sale. He measured a 16.3 REA with a 67% LMY. He is a true carcass sire; his progeny display the shape and width accompanied with the length and natural muscle shape. His sons have been our most popular and many of our high selling since they have come of age. He has two full sets of daughters in production and we could not be more satisfied with them as they have matured. They have an abundance of volume and length with a beautiful udder structure and high maternal traits, all in a moderate frame. Once again, his maternal pedigree traces back through the immortal Rosebud 115F on the bottom dam side. There are over 20 direct daughters in our sale group of this outstanding young sire.

BW: 94 lbs. Adj WW: 752 lbs. Adj YW: 1391 lbs.

EPDs	BW	WW	YW	Milk	TM	CE	MCE
	4.8	49	84	14	39	-5.0	0.0

Locust Grove *Net Worth* 17U

WTM 17U 1435649 Jan. 21, 2008 Male

S A V 8180 TRAVELER 004 AMF NHF CAF DMF DWF OSF DDF
S A V NET WORTH 4200 1809748 AMF NHF CAF DDF
S A V MAY 2410

S A F 598 BANDO 5175 AMF CAC DDF
LOCUST GROVE BLACKBIRD 7M CAF
LOCUST GROVE CT BLACKBIRD 2F

SITZ TRAVELER 8180 AMF NHF CAF DDF
BOYD FOREVER LADY 8003
S A F 598 BANDO 5175 AMF CAC DDF
S A V MAY 6269
BON VIEW BANDO 598 AMF CAC DDF
S A F ROYAL LASS 1002
CENTURY TOUCHSTONE 131
DODSWOOD HI BLACKBIRD 73A

Net Worth was a lead off bull and top seller in the 2009 LLB Spring Sale. Since coming to our program, he has been nothing short of a breeding phenomenon for us. We have used him extensively on our Purebred Angus and Commercial herd. He calves easy with lots of vigor in his newborns. His progeny has always been at the top of their groups for performance and correctness. His sons have been sound, functional, large scrotals and heavy muscled. The most impressive part of his progeny is the exceptional daughters he has produced. They are big volume and deep sided, with an impressive udder placement and exceptional milk volume. All of his progeny have maintained an excellent disposition and ease of fleshing. All this being said, it is his attribute when his progeny have entered the feedlot; they have performed efficiently and hit the mark for marbling with exceptional ribeye and carcass yield. The legacy left by Net Worth 17U is still unfolding through the production of his sons and daughter's progeny. Over 20 daughters are on offer.

BW: 87 lbs. Adj WW: 738 lbs.

EPDs	BW	WW	YW	Milk	TM	CE	MCE
	3.3	52	94	27	53	5.0	9.0

HA *Blackjack* 4590

4590 AAA 17943504 Apr. 3, 2014 Male

APEX WINDY 078
HA BLACKJACK 2812
 H A BLACKCAP LADY 1055

RR 1766 FOCUS 3916
HA MISS BLACKCAP 5819
 HA MISS BLACKCAP 3655

Black Jack 4590 came from the Hinman program in Montana. His sire group had some of the best carcass scores in the sale. As expected by the physical muscle and body mass, 4590 is a superior carcass bull. He scanned 16.1 inch ribeye with a 119 ratio, ranking him at the top of the group. 4590 ranks in the top 10% of the breed for WW, YW, MLK, SC, SW, SF and top 15% for RE SB The \$W, \$F, & \$B are important as he not only excels in carcass traits as carcass weight and ribeye, but feeding efficiency and in feed lot value (\$F), but overall beef value (\$B) of \$136 per head premium.

BW: 90 lbs. Adj WW: 765 lbs. Adj YW: 1339 lbs.

EPDs	BW	WW	YW	Milk	TM	CE	MCE
	3.0	63	113	29	-	2.0	4

Crescent Creek *Chizzlar* 10A

WOS 10A 1738036 Jan. 20, 2013 Male

S ALLIANCE 3313 AMF
S CHISUM 6175 AMF NHF CAF DDF
 S GLORIA 464

SITZ HERITAGE 10709
CRESCENT CREEK ROSEBUD GR
 CRESCENT CREEK ROSEBUD 115F

Chizzlar was the top selling bull in the 2014 Crescent Creek Sale at \$18,000. He is a son of the performance and carcass sire Chisum 6175. His dam is a Sitz Heritage 10709 daughter and from the famous Rosebud 115F in the Crescent Creek program. Chizzlar at one year of age measured at 16.6 REA with a 66.1% lean meat yield. We have had a number of calves from Chizzlar in 2015 and are impressed with calving ease, growth and correctness of his progeny. Co-Owned with Crescent Creek Angus and LLB Angus

BW: 92 lbs. Adj WW: 789 lbs. Adj YW: 1411 lbs.

EPDs	BW	WW	YW	Milk	TM	CE	MCE
	2.9	61	110	24	55	-1.0	9.0

Greenwood *Accelerator* JJP 4A

JJP 4A 1762735 Feb. 15, 2013 Male

TC FREEDOM 104 CAF AMF NHF DDF
GUMBO GULCH CREED 945 AMF NHF CAF MAF DDF
 CASSIE OF GUMBO GULCH 58M

NORTHLINE RIPTIDE 130N
DMM MISS ESSENCE 377 MAF
 DMM BLACKCAP ESSENCE 105R

Accelerator is an ET son of the great Essence 377 dam in the Miller Wilson program. His sire is the highly proven Gumbo Gulch Creed 945. Accelerator was seen as a calf and was a standout with the muscle and width he displayed. After seeing his full siblings including sisters in production, we felt he had a spot in our bull line-up. He has matured into a very sound made young sire with an abundance of natural muscle and depth.

BW: 85 lbs. Adj WW: 855 lbs. Adj YW: 1388 lbs.

EPDs	BW	WW	YW	Milk	TM	CE	MCE
	6.5	48	77	28	52	-1.0	5.5

JS *Tanker* 37

JSG 37Z 1704529 Mar. 4, 2012 Male

S A V BISMARCK 5682 AMF NHF CAF DDF
BUSH SUPER TANKER 414
 BUSH DAKOTA BLACKBIRD 5140 DDF

EBON HILL LIBERTY 13'01
HOWE MS PRIDE 136P
 HOWE MS PRIDE 61K

Tanker has been used on our heifers in 2013 and 2014. He calves easy with low birth, plus his calves have lots of vigor at birth. We have been extremely satisfied how the progeny of this Bismarck grandson have matured. We have featured our very best two year old with her Tanker 37Z heifer calf at side.

BW: 83 lbs. Adj WW: 622 lbs.

EPDs	BW	WW	YW	Milk	TM	CE	MCE
	2.6	44	87	18	40	4.0	5.0

H A R B WINDY 702 JH
 APEXETTE LUCY 6037
 PAPA FORTE 1921
 H A RITO BLACKCAP 9038
 RR FOCUS 1766
 ROLLIN ROCK BLACKBIRD 0729
 BR MIDLAND
 H A MISS BLACKCAP 7117

REFERENCE SIREs



LLB 44U *Blackman* 825A

LLB 825A 1742355 Jan. 21, 2013 Male

GEIS BLACKMAN 224'05
SOO LINE BLACKMAN 8044
 SANDY BAR QUEEN LASS 54M

REMITALL MERCEDES 146M
REMITALL BLACKBIRD 648R
 LLB BLACKBIRD 330L

GEIS BLACKMAN 186'00
 GEIS PRIDE 139'01
 LAMBS INNOVATOR 86J
 HAPPYVALE QUEEN LASS 77H
 SITZ ALLIANCE 6595 AMF NHF DMF CAF DDF
 HF TIBBIE 118J
 ROYLE-HEAD RIGHT TIME 27E
 PAT BLACKBIRD 9D

Blackman 825A was the lead off and top selling bull at LLB's 2014 Spring Sale. He sports strong performance figures, is structurally sound with lots of natural thickness. Blackman 825A has one of the best foot and leg structures we have seen. He sports a huge scrotal of 46 cm. at two years of age. His pedigree is backed by the GEIS Blackman sire. This pedigree contains many proven Canadian sires and dams in the background.

BW: 80 lbs. Adj WW: 768 lbs. Adj YW: 1485 lbs.

EPDs	BW	WW	YW	Milk	TM	CE	MCE
	2.8	48	81	17	41	-1.0	2.0



Early Sunset *Settler* 28B

CWB 28B 1795597 Feb. 2, 2014 Male

S A V PIONEER 7301 AMF NHF CAF DDF
GVC SETTLER 004X AMF CAF NHF DDF
 G V C FRONTIER LADY 272M

SOUTHLAND FREE RIDE 68R
EARLY SUNSET LADY ANN 26W
 EARLY SUNSET LADY ANN 9R

S A V FINAL ANSWER 0035 AMF NHF CAF DDF
 S A V BLACKBIRD 5297 CAC
 G B S NEW FRONTIER 295 9310
 G V C LADY MAYOR 036
 TC FREEDOM 104 CAF AMF NHF DDF
 SOUTHLAND ERROLINE 44L
 W C C TIMELINE J4
 EARLY SUNSET LADY ANN 55J

Settler 28B was a feature bull and a top seller at the Early Sunset 2015 Sale. He is sired by the Pioneer 7301 son Settler. We are impressed with his length of body and smooth front. Settler 28B holds a top set of EPD's to match his physical attributes. He ranks in the top 20% for BW, top 4% WW, top 2% YW and top 1% for MIK and TM. Top 5% CW. Settler 28B was used exclusively on heifers in 2015.

BW: 84 lbs. Adj WW: 802 lbs. Adj YW: 1382 lbs.

EPDs	BW	WW	YW	Milk	TM	CE	MCE
	1.1	61	110	32	63	7.0	10.0

A.I. SERVICE SIRES

B
L
A
C
K
A
N
G
U
S



Cole Creek *Cedar Ridge* 1V

1V AAA 16134394 Mar. 5, 2008 Male

C H QUANTUM 6247
COLE CREEK BLACK CEDAR 46P
COLE CREEK CLOVA JUANADA 67

C H QUANTUM 3330
C H BLACKBIRD 0136
A A R WINDY RIDGE 523
COLE CREEK CLOVA JUANADA 811
SHOSHONE ENCORE 6310
C A R MISS FOREVER 546
C H QUANTUM 6247
COLE CREEK CLOVADA 397

HBR ENCORE 0544
COLE CREEK CLOVANADA 49S
COLE CREEK CLOVANADA 709

A calving ease bull noted for his maternal excellence and consistency.

EPDs	CED	BW	WW	YW	MLK	SCR	CW	MARB	RE	FAT
	13.0	-0.8	44	78	33	1.06	26	0.28	0.61	0.056



Jindra *Double Vision*

730 AAA 16748826 Feb. 8, 2010 Male

BON VIEW NEW DESIGN 878
CONNEALY REFLECTION
HAPPY GRILL OF CONANGA 6260

B/R NEW DESIGN 036
BON VIEW GAMMER 85
N BAR EMULATION EXT
HAPPY DATE OF CONANGA
HOFF CHARGER S C 242
HOFF BOSS LADY S C 3V9
SUMMITCREST EXPO 0E27
G D A R RACHEL 4223

HOFF LIMITED EDITION S C 594
HOFF RACHEL 8812 40S
HOFF MISS EXPO S C 4223

An outcross performance powerhouse that offers one of the biggest curve bending spreads in the breed.

EPDs	CED	BW	WW	YW	MLK	SCR	CW	MARB	RE	FAT
	7.0	1.3	66	128	25	0.43	62	0.64	0.42	0.00



MAR *Innovation* 251

251 AAA 16983331 Feb. 3, 2011 Male

CONNEALY REFLECTION
CONNEALY IMPRESSION
PEARL PAMMY OF CONANGA 194

BON VIEW NEW DESIGN 878
HAPPY GRILL OF CONANGA 6260
VERMILION DATELINE 7078
PEARL JAM OF CONANGA 6114
SITZ TRAVELER 8180
S A V EMULOUS 8145
RIVER HILLS KAHUNA 175M
MAR PRECISION 328 BUSH 700

S A V FINAL ANSWER 0035
MAR FINAL KAHUNA 85S
MAR KAHUNA PRECISION 328 674

Noted for his body capacity and sound movement. Innovation is thick, deep bodied, with huge testicles.

EPDs	CED	BW	WW	YW	MLK	SCR	CW	MARB	RE	FAT
	8.0	2.0	83	131	15	1.66	28	0.62	0.77	0.008

REFERENCE SIRES

 **Red Blair's *Kargo* 47Z**
 BBC 47Z 1772643 Mar. 24, 2012 Male

RED RINGSTEAD KARGO 107M
 RED RINGSTEAD KARGO 215U OSF MAF NHF AMF
 RED RINGSTEAD MS EQUAL 589P

RED SSS RIVER BARON 602T
 RED BLAIR'S RUBA 26W
 RED BRYLOR G K RUBA 7T

RED COMPASS KARGO 83K
 RED GET-A-LONG MRS. YOUNG 095
 RED SSS YUKON 440K
 RED SSS MISS EQUAL 495G
 RED RIVERDALE BARON 117R
 RED SSS COLA 152R
 RED FINE LINE MULBERRY 26P OSF AMF MAF DDF
 RED HOWE MS. RUBA DDH 7H

Kargo 47Z came as the lead bull from the Blair's Ag 2014 Bull Sale. He is impressive in his soundness, foot, and leg structure. He is one of the deepest sided, heaviest muscled Red Angus bulls we have come across. We have used him extensively and are thoroughly impressed with his consistency in each and every calf born. He holds the distinction of low birth calving ease plus strong performance and an abundance of muscle and slope in his progeny. After seeing a number of Kargo daughters in production, we are certain his daughters will add to his credentials. His EPD's are a strong balanced profile. Of all the calves born in 2015 at Nordan, this sire's group set as one of the very best in both his sons and daughters.

BW: 96 lbs. Adj WW: 736 lbs.

EPDs	BW	WW	YW	Milk	TM	CE	MCE
	-0.1	59	90	24	53	1.8	6.2



Kargo



 **Red Twin Heritage *Hustle* 24A**
 KTH 24A 1772419 Jan. 24, 2013 Male

RED LAZY MC HUSTLE 18T
 RED HOWE HUSTLE 13X
 RED HOWE MS BELLA 4N

RED HOWE MR MATRIX 7L MAF NHF AMF OSF
 RED TWIN HERITAGE JEWEL 45U
 RED TWIN HERITAGE JEWEL 60L

LAZY MC BOOM 44R (RC)
 RED LAZY MC LARKABA 70R
 RED TOWAW BOOM 73D
 RED HEAD BELLA 202H
 RED HOWE MR MAT DDH 19F
 RED CRANSTON TINKERBELL 1J
 RED MOOSE CREEK PREMIUM 3H
 RED BRAMSHOTT CARLEE 613G

Hustle 24A was a lead off bull in the Best of the Breeds Bull Sale 2014. This young bull is impressive in his stature. A big solid hoof underneath leads up to a strong correct made structure with ample length and body capacity. He has seen extensive duties this season on our mature Red Angus cows.


BW: 95 lbs. Adj WW: 676 lbs. Adj YW: 1274 lbs.

EPDs	BW	WW	YW	Milk	TM	CE	MCE
	3.5	57	85	16	45	-2.5	3.2



Hustle



 **Red Nordan 908Y *Boomer* 760A**
 RJG 760A 1827563 Apr. 15, 2013 Male

RED HIPS KBJ BOOMER 16T
 RED KBJ BOOMER 908Y
 RED KBJ BEULA 1053T

RED SIX MILE AVIATOR 217P OSF
 RED GEIS SYRINGA 60'08
 RED GEIS SYRINGA 60'02

RED SSS BOOMER 803B
 RED HIPS REBELLO 4N
 RED SIX MILE MATADOR 817M
 RED KBJ BEULA 953P
 RED WILDMAN DENALI 19L OSF
 RED RSL SUE 400F OSF
 RED GEIS POUNDMAKER 159'97
 RED GEIS SYRINGA 11'93

Boomer 760A came in dam from the 2012 Geis Dispersal. His dam is part of the highly productive Syringa family. The influence of Aviator 217P on his dam's side as we have been impressed with the influence of the Aviator 71S sire which we have used successfully. His low birth, moderate growth, and strong maternal qualities coupled with his smooth body styling will allow him to be a complete calving ease sire.

BW: 82 lbs. Adj WW: 677 lbs.

EPDs	BW	WW	YW	Milk	TM	CE	MCE
	-0.3	46	65	21	48	0.7	3.7



Red Six Mile Aviator 217P

REFERENCE SIRES

Red Nordal *Cardplayer*



Dam of Card Player

RJG 879W 1542409 Jan. 20, 2009 Male

BCAR RANCHER 8'00 (EE+)
 RED BCAR WILD CARD (E+E+)
 BREED CREEK PRIDE 33F 21'98 (EE+)

WINDY WILLOWS RANCHER 62H
 BREED CREEK ERICA 5F 3'98
 BREED CREEK ATLAS 2E
 WIWA CREEK PRIDE 31Z 33'96
 RED VGW RAMBLER 1000 OSF
 RED ROD HB YANKE 638G
 RED SIX MILE ICING 82G
 RED GEIS HEATHER 79'99

RED ROD RAM 426M
 RED KBJ HEATHER 879P
 RED GEIS ICING 137'02

Cardplayer 879W came in dam from 2008 KBJ Sale. His dam is a beautiful made Red Rod Ram daughter. We have used Cardplayer 879W extensively on our Red Angus purebreds and commercial herd. His daughters are tremendous mothers with ample body capacity and milking ability. His daughters are a large part of our Red Herd.

BW: 90 lbs. Adj WW: 781 lbs. Adj YW: 1206 lbs.

EPDs	BW	WW	YW	Milk	TM	CE	MCE
(PE)	0.8	57	91	14	43	3.5	4.5

Red Nordal *Aviator 389X*



RJG 389X 1600284 Mar. 22, 2010 Male

RED SIX MILE AVIATOR 217P OSF
 RED GEIS AVIATOR 71'06 OSF
 RED GEIS MISS SKY 91'02

RED WILDMAN DENALI 19L OSF
 RED RSL SUE 400F OSF
 RED LCHMN GRND CANYON 1244G MAF OSC
 RED MISS SKY 12B
 RED MEM SAWYER BROWN 52F
 RED SSS SOAPY 639F
 RED H 70 QUANTOCK 79B
 RED SIX MILE EUCLA 690T

RED SSS IMPRINT 143H
 RED SIX MILE EUCLA 389P
 RED VIDAL'S MISS EUCLA 345D

Aviator 389X is sired by our former herdsire Red Geis Aviator 71S. His dam is a hard working Imprint 143H daughter with a -2.0 BW and +25 MLK. We are impressed with the birth weight and calving ease and growth of 389X progeny. Many of our best "Z" calves were by 389X. You will be impressed with his daughters on offer.

BW: 78 lbs. Adj WW: 731 lbs. Adj YW: 1187 lbs.

EPDs	BW	WW	YW	Milk	TM	CE	MCE
	-1.2	43	57	23	44	5.1	9.8

Red Soo Line *On Target 9308*



SOO 308W 1532928 Feb. 17, 2009 Male

RED DIMLER INDEED 446P
 RED CG ON TARGET 18T
 RED TVB ELWAY 12K

RED SIX MILE INDEED 810M
 RED CUMNOCK DUCHESS 422J
 RED TVB SP 147F
 RED TVB DOUBLE ELWAY 183G
 RED SOUTH VIEW NO EQUAL 28H
 RED SVR MS CHIEF 28L
 RED CRESCENT CREEK FRCHIEF 75L
 RED SOO ICECAP PENNY 3293

RED SVR CONCLUSION 144P
 RED SOO LINE PENNY 7079
 RED SOO LINE PENNY 5295

On Target was top selling Red Bull in the Soo Line 2010 Bull Sale. He had one of the largest ribeye measurements we found in a Red bull at 16.3 square inches. He has matured into a sound made performance sire. He ranks top 1% WW, top 7% YW, top 5% YG, top 3% REA, top 8% CW, top 1% Fat.

BW: 88 lbs. Adj WW: 938 lbs. Adj YW: 1440 lbs.

EPDs	BW	WW	YW	Milk	TM	CE	MCE
	0.9	76	105	11	48	0.7	2.1

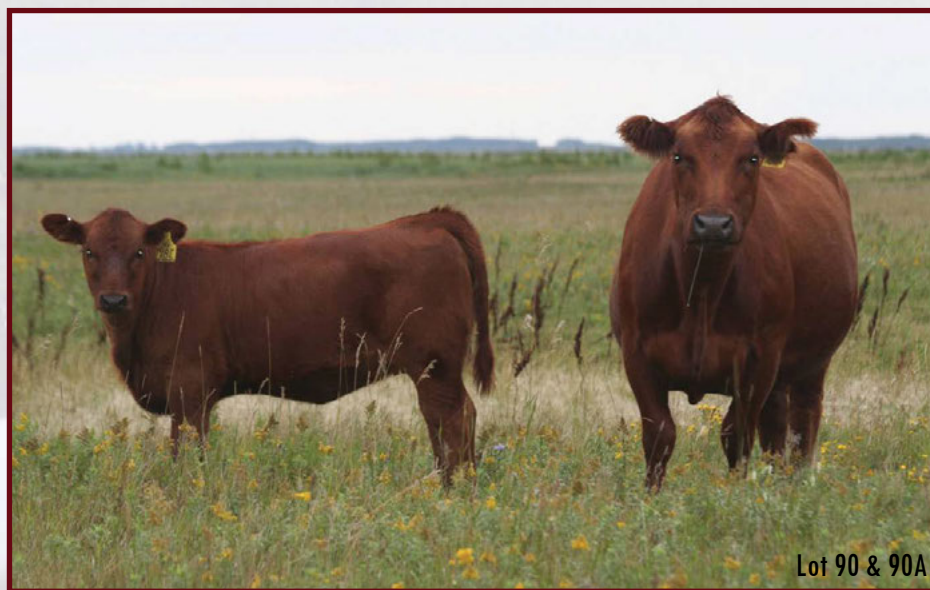
"ENVY 98S" COW FAMILY

LOT 90 - RJG 98X, LOT 90A - RJG 198C, LOT 91 - RJG 198B, LOT 92 - RJG 98Z

Leading off our Red Angus is the ENVY lineage. This cow family is unique in the genetics they possess from the Black genetics contained in the pedigree tracing back to the great N Bar Emulation EXT and the Canadian Black sire Northern Samurai.

ENVY 98X comes with her knockout daughter ENVY 198C by the carcass sire, On Target. This 2015 model will impress with her eye catching appeal and expressive length and thickness. ENVY 98X's 2014 daughter, 198B, by our Sooline Revolution 84U sire Nordal Revolution 73X adds the performance influence of Revolution lineage.

Completing this family is ENVY 98Z, the Aviator 389X sister to ENVY 98X. ENVY 98Z is a strong maternal female influenced by the Aviator 71S - Eulla 389P combination.



Lot 90 & 90A

90 - 98X

RJG 98X 1770518

Red Nordal 98S *Envy* 98X

Apr. 6, 2010 Female

BDM HOC 9N (EE+)
RED BAR DOUBLE M CLASS 125R (E+E+)
BDM BEAUTY 3N (EE+)

RED CRESCENT CREEK 52 CHF 50N
RED CRESCENT CREEK MS ENVY 98S
RED SUN VALLEY PROSPECT 206

Exposed to Red Twin Heritage Hustle 24A from May 27 to August 18, 2015.

BW: 78 lbs. Adj WW: 685 lbs. Adj YW: 878 lbs.

EPDs	BW	WW	YW	Milk	TM	CE	MCE
(PE)	-0.3	44	71	19	40	3.4	7.4

HOFF HEAD OF THE CLASS SC534
BAR DOUBLE M COUNTESS 75K
N BAR EMULATION EXT AMF NHF CAF DDF
BAR DOUBLE M BEAUTY 46L
RED CRESCENT CREEK H0904 52K
RED CRESCENT CREEK REBECCA 32J
RED KBJ SAM'S PROSPECTOR 133Z OSF MAF DDF
C A R 2100 MISS ENVY 206

90A - 198C

RJG 198C 1881962

Red Nordal 98X *Envy* 198C

Apr. 4, 2015 Female

SIRE: Red SOO Line On Target 9308 BW: 86 lbs.

EPDs	BW	WW	YW	Milk	TM	CE	MCE
(PE)	0.4	61	88	18	46	3.1	4.9

91 - 198B

RJG 198B 1880434

Red Nordal 98X *Envy* 98B

Mar. 27, 2014 Female

RED SOO LINE REVOLUTION 8084
RED NORDAL REVOLUTION 73X
RED SOO LINE CHRISTY 13M

RED BAR DOUBLE M CLASS 125R (E+E+)
RED NORDAL 98S ENVY 98X
RED CRESCENT CREEK MS ENVY 98S

Bred to Red Blairs Kargo 47Z on May 28, 2015. Exposed to Red Nordal 908A Boomer 760A from June 17 to August 25, 2015.

BW: 86 lbs. Adj WW: 668 lbs. Adj YW: 828 lbs.

EPDs	BW	WW	YW	Milk	TM	CE	MCE
	2.5	62	89	15	43	0.1	4.4

RED CORNER CREEK CASH 2R MAF OSF
RED SOO LINE RHONDA 5109 OSF MAF
RED SIX MILE HERCULES 19G
RED LAZY MC CHRISTY 61J
BDM HOC 9N 1168720 (EE+)
BDM BEAUTY 3N (EE+)
RED CRESCENT CREEK 52 CHF 50N
RED SUN VALLEY PROSPECT 206

92 - 98Z

RJG 98Z 1872861

Red Nordal 98S *Envy* 98Z

Mar. 23, 2012 Female

RED GEIS AVIATOR 71'06 OSF
RED NORDAL AVIATOR 389X OSF
RED SIX MILE EUCLA 389P

RED CRESCENT CREEK 52 CHF 50N
RED CRESCENT CREEK MS ENVY 98S
RED SUN VALLEY PROSPECT 206

Exposed to Red Blairs Kargo 47Z from June 14 to August 30, 2015.

BW: 86 lbs. Adj WW: 626 lbs. Adj YW: 859 lbs.

EPDs	BW	WW	YW	Milk	TM	CE	MCE
	0.6	48	67	19	41	4.7	9.7

RED SIX MILE AVIATOR 217P OSF
RED GEIS MISS SKY 91'02
RED SSS IMPRINT 143H
RED VIDAL'S MISS EUCLA 345D
RED CRESCENT CREEK H0904 52K
RED CRESCENT CREEK REBECCA 32J
RED KBJ SAM'S PROSPECTOR 133Z OSF MAF DDF
C A R 2100 MISS ENVY 206



93 - 738X

Red Nordal 738S Cherokee 738X

RJG 738X 1872856 Mar. 23, 2010 Female

RED SIX MILE AVIATOR 217P OSF
 RED GEIS AVIATOR 71'06 OSF
 RED GEIS MISS SKY 91'02

RED WILDMAN DENALI 19L OSF
 RED RSL SUE 400F OSF
 RED LCHMN GRND CANYON 1244G MAF OSC
 RED MISS SKY 12B
 RED T-K DUSTER 10K
 RED TOWAW PRINCESS 17D
 RED SVR PRIME CHOICE 13K
 RED SOUTHMOL CHEROKEE 31F

RED T-K DEADLINE 5M
 RED DEER RANGE CHEROKEE 738S
 RED DEER RANGE CHOEROCKEE 96N

738X Cherokee 738X is one of our most prominent Aviator daughters. Aviator 71S led the Geis Sale in 2007 as the lead off Red bull and top seller. He possessed one of the largest rib eye measurements at over 16.3 sq. in. 738X displays that natural muscle and shape in her body capacity. Her 2015 son by On Target is the #1 ranked bull calf in our current calf crop. He is an outstanding young herd bull candidate. Cherokee 738X is not only one of the very best we have raised but also one of our very top cows in the herd. She is sound made, well structured with exceptional length and superb udder qualities. **Exposed to Red Twin Heritage Hustle 24A from May 27 to August 18, 2015.**

BW: 80 lbs. Adj WW: 712 lbs. Adj YW: 989 lbs.

EPDs	BW	WW	YW	Milk	TM	CE	MCE
(PE)	0.6	59	88	16	43	1.5	7.5

"AVON 607S" COW FAMILY

LOT 94 - RJG 607X, LOT 94A - RJG 607C, LOT 95 - RJG 607B, LOT 96 - RJG 607Z

AVON 607X is a moderate framed Aviator daughter that comes with her 2014 and 2015 daughters. 607C is a stylish On Target daughter followed by her older sister 607B from our powerful breeding son of Wildcard 879W.

94 - 607X

Red Nordal 607S Avon 607X

RJG 607X 1880515 Apr. 2, 2010 Female

RED SIX MILE AVIATOR 217P OSF
 RED GEIS AVIATOR 71'06 1311579 OSF
 RED GEIS MISS SKY 91'02

RED WILDMAN DENALI 19L OSF
 RED RSL SUE 400F OSF
 RED LCHMN GRND CANYON 1244G MAF OSC
 RED MISS SKY 12B
 RED T-K DUSTER 10K
 RED TOWAW PRINCESS 17D
 RED DEER RANGE DIRECT 87H
 RED DEER RANGE AVON 260E

RED T-K DEADLINE 5M
 RED DEER RANGE AVON 607S
 RED DEER RANGE AVON 379K

Exposed to Red Blairs Kargo 47Z from May 27 to August 30, 2015.

BW: 82 lbs. Adj WW: 632 lbs. Adj YW: 809 lbs.

EPDs	BW	WW	YW	Milk	TM	CE	MCE
(PE)	0.4	51	72	17	42	2.1	6.6

94A - 607C

Red Nordal 607X Avon 607C

RJG 607C 1882592 Apr. 12, 2015 Female

SIRE: Red 500 Line On Target 9308 BW: 84 lbs. Adj WW: 707 lbs.

EPDs	BW	WW	YW	Milk	TM	CE	MCE
(PE)	0.7	64	91	14	46	1.4	4.5

95 - 607B

Red Nordal 607X Avon 607B

RJG 607B 1881642 Apr. 8, 2014 Female

RED BCAR WILD CARD (E+E+)
 RED NORDAL CARDPLAYER
 RED KBJ HEATHER 879P

BCAR RANCHER 8'00 (EE+)
 BREED CREEK PRIDE 33F 21'98 (EE+)
 RED ROD RAM 426M
 RED GEIS ICING 137'02
 RED SIX MILE AVIATOR 217P OSF
 RED GEIS MISS SKY 91'02
 RED T-K DEADLINE 5M
 RED DEER RANGE AVON 379K

RED GEIS AVIATOR 71'06 OSF
 RED NORDAL 607S AVON 607X
 RED DEER RANGE AVON 607S

Exposed to Red Nordal 908A Boomer 760A from June 17 to August 25, 2015.

BW: 82 lbs. Adj WW: 681 lbs. Adj YW: 847 lbs.

EPDs	BW	WW	YW	Milk	TM	CE	MCE
(PE)	-0.5	48	75	19	42	3.6	6.4

96 - 607Z

Red Nordal 607S Avon 607Z

RJG 607Z 1872870 May 10, 2012 Female

RED BCAR WILD CARD (E+E+)
 RED NORDAL CARDPLAYER
 RED KBJ HEATHER 879P

BCAR RANCHER 8'00 (EE+)
 BREED CREEK PRIDE 33F 21'98 (EE+)
 RED ROD RAM 426M
 RED GEIS ICING 137'02
 RED T-K DUSTER 10K
 RED TOWAW PRINCESS 17D
 RED DEER RANGE DIRECT 87H
 RED DEER RANGE AVON 260E

RED T-K DEADLINE 5M
 RED DEER RANGE AVON 607S
 RED DEER RANGE AVON 379K

Exposed to Red Blairs Kargo 47Z from May 27 to August 30, 2015. Observed bred on June 23.

BW: 72 lbs. Adj WW: 709 lbs. Adj YW: 914 lbs.

EPDs	BW	WW	YW	Milk	TM	CE	MCE
(PE)	0.7	52	80	13	39	2.4	2.9



Lot 97A

97 - 37X

RJG 37X 1656045 Mar. 14, 2010 Female

RED CORNER CREEK CASH 2R MAF OSF
 RED SOO LINE REVOLUTION 8084
 RED SOO LINE RHONDA 5109 OSF MAF

RED CRESCENT CREEK 52 CHF 50N
 RED CRESCENT CREEK REBECCA 37S
 RED CRESCENT CREEK REBECCA 40G

Red Nordal 37S *Rebecca* 37X

RED PIE ATLANTIC 2204 OSF MAF
 RED NORTHLINE PRINCESS 59L
 RED CRESCENT CREEK FRCHIEF 75L
 RED GEIS RHODA 176'99
 RED CRESCENT CREEK H0904 52K
 RED CRESCENT CREEK REBECCA 32J
 RED HR CHEROKEE 53C
 RED CRESCENT CREEK REBECCA 84D

Rebecca 37X is sired by the performance bull Soo Line Revolution 3084. Her dam, Rebecca 37S, has left a leading set of daughters making this one of our feature lots in the Kargo 47Z daughters. Rebecca 137C has been a standout from birth. The calf is one of our best 2015 born Red Angus. **Exposed to Red Twin Heritage Hustle 24A from June 4 to August 18, 2015.**

BW: 88 lbs. Adj WW: 641 lbs. Adj YW: 839 lbs.

EPDs	BW	WW	YW	Milk	TM	CE	MCE
(PE)	2.2	58	73	10	39	-2.1	1.5

98 - 28X

RJG 28X 1656605 Mar. 20, 2010 Female

RED SIX MILE AVIATOR 217P OSF
 RED GEIS AVIATOR 71'06 OSF
 RED GEIS MISS SKY 91'02

RED TER-RON CALLOWAY 15R
 RED LLB LADY BELLE 28T
 RED TOWAW LADY BELLE 85G

Red Nordal *Lady Belle*

RED WILDMAN DENALI 19L OSF
 RED RSL SUE 400F OSF
 RED LCHMN GRND CANYON 1244G MAF OSC
 RED MISS SKY 12B
 RED HEARTLAND KNIGHT CHARM 11L
 RED THAT'LL DO RED WING 15A
 RED LMAN ROYALTY 114B
 RED TOWAW LADY BELLE 95A

Lady Belle 28X comes as one of our strongest Aviator 71S daughters. She has an abundance of performance in her genetics make up. She displays the ideal udder structure of both her sire and dam's characteristics. Her 2015 bull by Kargo 47Z came in as one of our heaviest weaning weights. This young female can combine low birth, calving ease, with solid growth figures. **Exposed to Red Blairs Kargo 47Z from June 2 to August 30, 2015.**

BW: 86 lbs. Adj WW: 702 lbs. Adj YW: 987 lbs.

EPDs	BW	WW	YW	Milk	TM	CE	MCE
(PE)	2.1	64	94	13	42	-0.7	6.1

97A - 137C

RJG 137C 1881963 Apr. 4, 2015 Female

SIRE: Red Blair's Kargo 47Z BW: 80 lbs.

EPDs	BW	WW	YW	Milk	TM	CE	MCE
(PE)	1.3	61	82	17	47	1.1	4.0



Justin and Jessica touring Scotland

"ALFRIDA" COW FAMILY

LOT 99 - RJG 889X, LOT 99A - RJG 989C, LOT 100 - RJG 899A, LOT 102 - RJG 62Z

Alfrida 889X leads off this family. She is a stellar model Aviator 71S daughter whose family originated in the powerful KBJ program. She comes with her prominent young On Target daughter 989C. Complete with this cow family is also ALFRIDA 889X's, 899A 2013 daughter by On Target who produced one of our top Kargo daughters in the two year old group. Alfrida 62Z would rank as one of the most stellar On Target producing daughters in our 2012 born group.

99 - 889X

RJG 889X 1770517 Apr. 4, 2010 Female

RED SIX MILE AVIATOR 217P OSF
RED GEIS AVIATOR 71'06 OSF
RED GEIS MISS SKY 91'02

RED CRESCENT CREEK RAMBLER 70P
RED NORDAL 889R ALFRIDA
RED KBJ ALFRIDA 889R

Red Nordal 889T *Alfrida*

Apr. 4, 2010 Female

RED WILDMAN DENALI 19L OSF
RED RSL SUE 400F OSF
RED LCHMN GRND CANYON 1244G MAF OSC
RED MISS SKY 12B
RED BJR RAMBLER 5162 OSF
RED CRESCENT CREEK LEMAY 65G
RED CUDLOBE RAINMAKER 32L
RED KINTYRE ALFRIDA 421L

Exposed to Red Blairs Kargo 47Z from June 2 to August 30, 2015.

BW: 72 lbs. Adj WW: 657 lbs. Adj YW: 832 lbs.

EPDs	BW	WW	YW	Milk	TM	CE	MCE
(PE)	-0.3	53	80	21	45	2.1	7.3

99A - 989C

RJG 989C 1882596 Apr. 21, 2015 Female

SIRE: Red Soo Line On Target 9308 BW: 86 lbs.

EPDs	BW	WW	YW	Milk	TM	CE	MCE
(PE)	0.5	63	89	16	47	1.4	4.5

Red Nordal 809X *Alfrida* 989C

100 - 899A

RJG 899A 1880214 Mar. 28, 2013 Female

RED CG ON TARGET 18T
RED SOO LINE ON TARGET 9308
RED SOO LINE PENNY 7079

RED SIX MILE AVIATOR 217P OSF
RED NORDAL 889T ALFRIDA
RED NORDAL 889R ALFRIDA

Red Nordal 809T *Alfrida* 899A

Mar. 28, 2013 Female

RED DIMLER INDEED 446P
RED TVB ELWAY 12K
RED SVR CONCLUSION 144P
RED SOO LINE PENNY 5295
RED SIX MILE AVIATOR 217P OSF
RED GEIS MISS SKY 91'02
RED CRESCENT CREEK RAMBLER 70P
RED KBJ ALFRIDA 889R

Exposed to Red Blairs Kargo 47Z from June 1 to August 30, 2015. Observed bred June 1.

BW: 88 lbs. Adj WW: 648 lbs. Adj YW: 864 lbs.

EPDs	BW	WW	YW	Milk	TM	CE	MCE
(PE)	0.5	63	89	16	47	1.4	4.5

102 - 62Z

RJG 62Z 1881639 Mar. 9, 2012 Female

RED CG ON TARGET 18T
RED SOO LINE ON TARGET 9308
RED SOO LINE PENNY 7079

RED CRESCENT CREEK RAMBLER 70P
RED NORDAL 889R ALFRIDA
RED KBJ ALFRIDA 889R

Red Nordal 889T *Alfrida* 62Z

Mar. 9, 2012 Female

RED DIMLER INDEED 446P
RED TVB ELWAY 12K
RED SVR CONCLUSION 144P
RED SOO LINE PENNY 5295
RED BJR RAMBLER 5162 OSF
RED CRESCENT CREEK LEMAY 65G
RED CUDLOBE RAINMAKER 32L
RED KINTYRE ALFRIDA 421L

Exposed to Red Blairs Kargo 47Z from June 2 to August 30, 2015.

BW: 86 lbs. Adj WW: 584 lbs. Adj YW: 814 lbs.

EPDs	BW	WW	YW	Milk	TM	CE	MCE
(PE)	0.8	54	77	16	44	1.7	2.6

R
E
D
A
N
G
U
S



"RED GIRL" COW FAMILY

LOT 103 - RJG 1035X, LOT 104 - RJG 135Z, LOT 105 - RJG 889B

Red Girl 1035X comes as one of our most standout matrons. She is the longest bodied female we have worked with. She is unique in her pedigree make up with some of the great Red Angus sires found in her lineage as Six Mile Aviator, Denali and Geis Poundmaker. Her 2015 son by Kargo 47Z ranked as our #2 bull at weaning.

Red Girl 135Z is from our calving ease sire Seismic 255X. 135Z is maturing into the mold of Red Girl 1035X.

103 - 1035X

Red Nordal 1035T *Red Girl* 1035X

RJG 1035X 1656049 Mar. 30, 2010 Female

RED SIX MILE AVIATOR 217P OSF
RED GEIS AVIATOR 71'06 OSF
RED GEIS MISS SKY 91'02

RED MINBURN WINDY 5178
RED KBJ RED GIRL 1035T
RED KBJ RED GIRL 899N

RED WILDMAN DENALI 19L OSF
RED RSL SUE 400F OSF
RED LCHMN GRND CANYON 1244G MAF OSC
RED MISS SKY 12B
KBJ WINDY 680M (EE)
MINBURN MAY 90G (RC)
RED GEIS POUNDMAKER 120'01
RED GEIS RED GIRL 63'01

Red Girl 1035X ranks as one of our premier cows not only in her pedigree but the superior genetics for performance and carcass qualities. She carries some unique Black lineage in the sire side of her dam with the influence of AAR Really Windy and the May 90G dam. She is a unique individual with her impressive EPD'S. She ranks in the top 7% for WW top 9% for YW top 10% for REA top 7% for CW and top 10% for fat. One of our most dominating females with the numbers to back it up. **Exposed to Red Blairs Kargo 47Z from June 2 to August 30, 2015.**

BW: 80 lbs. Adj WW: 712 lbs. Adj YW: 974 lbs.

EPDs	BW	WW	YW	Milk	TM	CE	MCE
(PE)	2.1	68	102	18	48	-1.6	5.6



104 - 135Z

Red Nordal 1035T *Red Girl* 135Z

RJG 135Z 1872984 Mar. 5, 2012 Female

RED MAJESTIC SEISMIC N 114S
RED NORDAL SEISMIC 255X
RED LLB ROBERTA LEE 0255T

RED MINBURN WINDY 5178
RED KBJ RED GIRL 1035T
RED KBJ RED GIRL 899N

RED GOLD-BAR SCF NITRO K 112N
RED BRA SIERRA 243M
RED TER-RON CALLOWAY 15R
RED LLB ROBERTA LEE 249M
KBJ WINDY 680M (EE)
MINBURN MAY 90G (RC)
RED GEIS POUNDMAKER 120'01
RED GEIS RED GIRL 63'01

Exposed to Red Blairs Kargo 47Z from June 2 to August 30, 2015.

BW: 70 lbs. Adj WW: 534 lbs. Adj YW: 794 lbs.

EPDs	BW	WW	YW	Milk	TM	CE	MCE
	2.6	56	88	14	42	-2.5	0.7

105 - 889B

Red Nordal 899N *Redgirl* 889B

RJG 889B 1881956 Apr. 15, 2014 Female

RED SOO LINE REVOLUTION 8084
RED NORDAL REVOLUTION 73X
RED SOO LINE CHRISTY 13M

RED GEIS POUNDMAKER 120'01
RED KBJ RED GIRL 899N
RED GEIS RED GIRL 63'01

RED CORNER CREEK CASH 2R MAF OSF
RED SOO LINE RHONDA 5109 OSF MAF
RED SIX MILE HERCULES 19G
RED LAZY MC CHRISTY 61J
RED GEIS POUNDMAKER 159'97
GEIS SAMARIE 269'96 (RC)
RED GEIS PREMIER PLUS 72'96
RED EAGLE ACRES RED GIRL 102F

Red Girl 889B is part of the family of lot 103. The dam 889N is a highly productive Poundmaker 120'01 daughter. **Exposed to Red Nordal 908Y Boomer 760A from June 16 to August 30, 2015.**

BW: 88 lbs. Adj WW: 745 lbs. Adj YW: 807 lbs.

EPDs	BW	WW	YW	Milk	TM	CE	MCE
	5.1	76	108	16	48	-5.7	-2.2



106 - 997Y

Red Nordal 997P *Yanke* 997Y

RJG 997Y 1712042 Apr. 3, 2011 Female

RED LAZY MC SMASH 41N OSF
RED LAZY MC SMASH 7S
RED LAZY MC MISTRESS 5L

RED CUDLOBE RAINMAKER 32L
RED KBJ YANKEE 997P
RED D-BAR YANKEE LADY 25K

RED SSS BOOMER 803B
RED LAURON YB ROSA 11G
RED LAZY MC NEW RELEASE 29F
RED LAZY MC MISTRESS 44J
STEVENSON RAINMAKER 630G (RC)
CUDLOBE DELIA 25J (RC)
RED D-BAR GRAND DESIGN 6G
RED MAC MISS YANKEE 47X

Yankee 997Y is from a performance backed cow family. Her dam shows the influence of the trait leading sire Rainmaker 32L. The dam Yankee 997P ranks in the top 10% of the breed for WW and YW. The addition of Smash 7S adds the balance of low birth calving ease and balanced udder structure. Yankee 997Y raised one of our very best Kargo daughters in 2015 that will remain in the herd. **Exposed to Red Twin Heritage Hustle 24A from May 27 to August 18, 2015.**

BW: 88 lbs. Adj WW: 681 lbs. Adj YW: 865 lbs.

EPDs	BW	WW	YW	Milk	TM	CE	MCE
	4.0	69	106	17	49	-2.3	-0.3

"HOUTT 971R" COW FAMILY

LOT 107 - RJG 971Y, LOT 108 - RJG 971Z

The Houtt 971R cow family has established themselves as performance individuals. Rainmaker 32L is a breed trait leader for performance and top maternal values. We have used a Houtt 971R son extensively on our commercial females. Houtt 971Y and Houtt 971Z are two complete young producers that carry that dark red color. Each of these young females two of our best bull calves in 2015. Both females are fault free in their makeup and possess a perfect udder structure and ample milking ability. Lot 108 971Z is definitely one of our very best up and coming females on offer. It would be hard to design one any better in her correctness, shape and volume coupled with a proven productive pedigree with the influence of the Aviator and Rainmaker genetics.



RED ANGLUS

107 - 971Y

RJG 971Y 1656062 Mar. 24, 2011 Female

RED LAZY MC SMASH 41N OSF
RED LAZY MC SMASH 7S
RED LAZY MC MISTRESS 5L

RED CUDLOBE RAINMAKER 32L
RED KBJ HOUTT 971R
RED KBJ HOUTT 935J

Exposed to Red Twin Heritage Hustle 24A from June 4 to August 25, 2015.

BW: 94 lbs. Adj WW: 637 lbs. Adj YW: 861 lbs.

EPDs	BW	WW	YW	Milk	TM	CE	MCE
	5.8	68	103	16	48	-3.6	0.3

Red Nordal 971R Houtt 971Y

RED SSS BOOMER 803B
RED LAURON YB ROSA 11G
RED LAZY MC NEW RELEASE 29F
RED LAZY MC MISTRESS 44J
STEVENS RAINMAKER 630G (RC)
CUDLOBE DELIA 25J (RC)
RED K-C EXPLORER 65G
RED KBJ CHETA 914G

108 - 971Z

RJG 971Z 1880518 Apr. 11, 2012 Female

RED GEIS AVIATOR 71'06 OSF
RED NORDAL AVIATOR 389X OSF
RED SIX MILE EUCLA 389P

RED CUDLOBE RAINMAKER 32L
RED KBJ HOUTT 971R
RED KBJ HOUTT 935J

Exposed to Red Blairs Kargo 47Z from June 12 to August 25, 2015.

BW: 88 lbs. Adj WW: 699 lbs. Adj YW: 947 lbs.

EPDs	BW	WW	YW	Milk	TM	CE	MCE
	4.1	62	89	20	47	-1.1	4.7

Red Nordal 971R Houtt 971Z

RED SIX MILE AVIATOR 217P OSF
RED GEIS MISS SKY 91'02
RED SSS IMPRINT 143H
RED VIDAL'S MISS EUCLA 345D
STEVENS RAINMAKER 630G (RC)
CUDLOBE DELIA 25J 964858 (RC)
RED K-C EXPLORER 65G
RED KBJ CHETA 914G

"HI HO 76S" COW FAMILY

LOT 109 - RJG 76Y, LOT 110 - RJG 761B

If you are looking for a cow family to raise highly maternal progeny this would be the one. The HI HO 76S is our most impressive dam in production. She has passed her udder qualities and milk volume through to her progeny. This lineage is calving ease low birth efficient.

109 - 76Y

RJG 76Y 1827486 Apr. 12, 2011 Female

RED LAZY MC SMASH 41N OSF
RED LAZY MC SMASH 7S
RED LAZY MC MISTRESS 5L

RED SPRING CREEK HI HO 10N
RED BROWNALTA HI HO 76S
RED BROWNALTA HI MARK 30L

Exposed to Red Twin Heritage Hustle 24A from June 2 to August 25, 2015.

BW: 70 lbs. Adj WW: 615 lbs. Adj YW: 792 lbs.

EPDs	BW	WW	YW	Milk	TM	CE	MCE
	-1.8	46	67	17	43	3.8	3.6

Red Nordal 76S Hi Ho 76Y

RED SSS BOOMER 803B
RED LAURON YB ROSA 11G
RED LAZY MC NEW RELEASE 29F
RED LAZY MC MISTRESS 44J
RED SPRING CREEK HI HO 8K
RED SPRING CREEK VERY NICE 57F
RED SPRING CREEK HIGH POWER 7J
RED BROWNALTA BRIDGET 17D

110 - 761B

RJG 761B 1880226 Apr. 24, 2014 Male

RED BCAR WILD CARD (E+E+)
RED NORDAL CARDPLAYER
RED KBJ HEATHER 879P

RED LAZY MC SMASH 7S
RED NORDAL 76S HI HO 76Y
RED BROWNALTA HI HO 76S

Exposed to Red Nordal 908Y Boomer 760A from June 17 to August 30, 2015.

BW: 74 lbs. Adj WW: 737 lbs. Adj YW: 873 lbs.

EPDs	BW	WW	YW	Milk	TM	CE	MCE
	-1.3	50	77	15	43	3.2	4.0

Red Nordal 76Y Hi Ho 761B

BCAR RANCHER 8'00 (EE+)
BREED CREEK PRIDE 33F 21'98 (EE+)
RED ROD RAM 426M
RED GEIS ICING 137'02
RED LAZY MC SMASH 41N OSF
RED LAZY MC MISTRESS 5L
RED SPRING CREEK HI HO 10N
RED BROWNALTA HI MARK 30L

"CAPSTONE 15S" COW FAMILY

LOT 111 - RJG 15Y, LOT 112 - RJG 15Z, LOT 113 - RJG 42Z

The Capstone 15S family ranks as one of our favourites. They possess all the features of a model cow. Sound structured feet, legs, and stature. They all have an ideal udder structure and combined with their performance and growth, rank at the top for maternal qualifications. Capstone 15Y, by Smash 7S, holds some of our highest performance figures. Capstone 15Z will come as one of the featured females of the group. The Aviator 71S influence displays in her over all dimension. Capstone 15Z had a stand out bull calf in 2015 by Kargo 15Z. This young female has placed herself as one of the very best we have raised.

Capstone 42Z is a Cardplayer daughter from a maternal sister of 15Y and 15Z. She displays the dark Cherry colour of her sire. Capstone 42Z is one of our very best three year olds. This cow family comes highly recommended.



RED ANGLUS

111 - 15Y

RJG 15Y 1712046

Red Nordal 15S *Capstone 15Y*

Apr. 24, 2011 Female

RED LAZY MC SMASH 41N OSF
RED LAZY MC SMASH 7S
RED LAZY MC MISTRESS 5L

RED MLK CRK CAPSTONE 901 OSF MAF
RED TED CAPSTONE 15S
RED TED NEOMA THE DUKE

Exposed to Red Blairs Kargo 47Z from June 2 to August 30, 2015.

BW: 78 lbs. Adj WW: 730 lbs. Adj YW: 918 lbs.

EPDs	BW	WW	YW	Milk	TM	CE	MCE
	1.4	75	116	18	51	0.4	0.9

RED SSS BOOMER 803B
RED LAURON YB ROSA 11G
RED LAZY MC NEW RELEASE 29F
RED LAZY MC MISTRESS 44J
RED BUF CRK CHF 824-1658 MAF OSC
RED MLK CRK BLOCKANNA 768
RED BJR THE DUKE 502-5176
RED MEM QUEENIE STORM 161T

112 - 15Z

RJG 15Z 1872860

Red Nordal 15S *Capstone 15Z*

Mar. 18, 2012 Female

RED GEIS AVIATOR 71'06 OSF
RED NORDAL AVIATOR 389X OSF
RED SIX MILE EUCLA 389P

RED MLK CRK CAPSTONE 901 OSF MAF
RED TED CAPSTONE 15S
RED TED NEOMA THE DUKE

Exposed to Red Blairs Kargo 47Z from June 2 to August 30, 2015.

BW: 78 lbs. Adj WW: 671 lbs. Adj YW: 977 lbs.

EPDs	BW	WW	YW	Milk	TM	CE	MCE
	0.0	61	89	21	50	2.0	5.2

RED SIX MILE AVIATOR 217P OSF
RED GEIS MISS SKY 91'02
RED SSS IMPRINT 143H
RED VIDAL'S MISS EUCLA 345D
RED BUF CRK CHF 824-1658 MAF OSC
RED MLK CRK BLOCKANNA 768
RED BJR THE DUKE 502-5176
RED MEM QUEENIE STORM 161T

113 - 42Z

RJG 42Z 1872867

Red Nordal 42W *Capstone 42Z*

Apr. 15, 2012 Female

RED BCAR WILD CARD (E+E+)
RED NORDAL CARDPLAYER
RED KBJ HEATHER 879P

RED GEIS AVIATOR 71'06 OSF
RED NORDAL 15S CAPSTONE 42W
RED TED CAPSTONE 15S

Bred to Red Soo Line On Target 9308 on June 6, 2015. Exposed to Red Blairs Kargo 47Z from June 21 to August 25, 2015.

BW: 78 lbs. Adj WW: 693 lbs. Adj YW: 838 lbs.

EPDs	BW	WW	YW	Milk	TM	CE	MCE
	0.6	68	104	17	47	2.7	5.4

BCAR RANCHER 8'00 (EE+)
BREED CREEK PRIDE 33F 21'98 (EE+)
RED ROD RAM 426M
RED GEIS ICING 137'02
RED SIX MILE AVIATOR 217P OSF
RED GEIS MISS SKY 91'02
RED MLK CRK CAPSTONE 901 OSF MAF
RED TED NEOMA THE DUKE



"BRIDGET 259W" COW FAMILY

LOT 114 - RJG 259Y, LOT 115 - RJG 259Z

Bridget 259Y is sired by Nordan Cardplayer 879W. The 879W daughters have matured into an exceptionally uniform and functional group of young mothers. 259Y produced one of our stoutest Kargo 47Z sons in 2015. Bridget 259Z is an Aviator 389X daughter, she is maturing into the mold of her dam. Bridget 259W has shown through her production she can place herself as one of our top valued producers.

114 - 259Y

Red Nordan 259W *Bridget* 259Y

RJG 259Y 1872857 Apr. 8, 2011 Female

RED BCAR WILD CARD (E+E+)
RED NORDAL CARDPLAYER
RED KBJ HEATHER 879P

RED TER-RON CALLOWAY 15R
RED LLB BRIDGET 259W
RED SOO LINE BRIDGET 6226

BCAR RANCHER 8'00 (EE+)
BREED CREEK PRIDE 33F 21'98 (EE+)
RED ROD RAM 426M
RED GEIS ICING 137'02
RED HEARTLAND KNIGHT CHARM 11L
RED THAT'LL DO RED WING 15A
RED DWAJO GLADIATOR 32L
RED SIX MILE BRIDGET 401J

Exposed to Red Twin Heritage Hustle 24A from June 2 to August 25, 2015.

BW: 78 lbs. Adj WW: 683 lbs. Adj YW: 812 lbs.

EPDs	BW	WW	YW	Milk	TM	CE	MCE
	-0.3	54	85	11	38	2.2	5.0

115 - 259Z

Red Nordan 259W *Bridget* 259Z

RJG 259Z 1872863 Mar. 27, 2012 Female

RED GEIS AVIATOR 71'06 OSF
RED NORDAL AVIATOR 389X OSF
RED SIX MILE EUCLA 389P

RED TER-RON CALLOWAY 15R
RED LLB BRIDGET 259W
RED SOO LINE BRIDGET 6226

RED SIX MILE AVIATOR 217P OSF
RED GEIS MISS SKY 91'02
RED SSS IMPRINT 143H
RED VIDAL'S MISS EUCLA 345D
RED HEARTLAND KNIGHT CHARM 11L
RED THAT'LL DO RED WING 15A
RED DWAJO GLADIATOR 32L
RED SIX MILE BRIDGET 401J

Exposed to Red Blairs Kargo 47Z from June 14 to August 25, 2015.

BW: 82 lbs. Adj WW: 633 lbs. Adj YW: 798 lbs.

EPDs	BW	WW	YW	Milk	TM	CE	MCE
	-0.7	38	53	16	38	3.5	7.7

116 - 94Y

Red Nordan 94S *Hallie* 94Y

RJG 94Y 1712048 May 22, 2011 Female

RED LAZY MC SMASH 41N OSF
RED LAZY MC SMASH 7S
RED LAZY MC MISTRESS 5L

RED CRESCENT CREEK 52 CHF 50N
RED CRESCENT CREEK HALLIE 94S
RED FLAT LAKE HALLIE 66H

RED SSS BOOMER 803B
RED LAURON YB ROSA 11G
RED LAZY MC NEW RELEASE 29F
RED LAZY MC MISTRESS 44J
RED CRESCENT CREEK H0904 52K
RED CRESCENT CREEK REBECCA 32J
RED FLAT LAKE ESTRA 37E
RED FLAT LAKE 4Y

Hallie 94Y's dam 94S has been one of our favourite red females since she arrived from Crescent Creek. The combination of calving ease and maternal is an important part of this pedigree. Exposed to Red Blairs Kargo 47Z from June 2 to August 30, 2015.

BW: 68 lbs. Adj WW: 782 lbs. Adj YW: 914 lbs.

EPDs	BW	WW	YW	Milk	TM	CE	MCE
	-1.2	50	76	15	42	2.3	4.0

AVERAGE RED ANGUS EPD'S

BW	WW	YE	Milk
-0.1	53	79	17

TM	CE	MCE
43	2.4	4.4

"SPERRA 16S" COW FAMILY

LOT 117 - RJG 16Z, LOT 118 - RJG 116Z

This pair of Sperra 16S females display the depth of rib and body shape that is evident in this family. They have been some of the easiest cows to work with and mate with the consistency of the sires Cardplayer 879W and Aviator 389X.

117 - 16Z

Red Nordan 16S *Sperra* 16Z

RJG 16Z 1881640 Mar. 25, 2012 Female

RED GEIS AVIATOR 71'06 OSF
RED NORDAL AVIATOR 389X OSF
RED SIX MILE EUCLA 389P

RED BAR-E-L GRID IRON 109P
RED CRESCENT CREEK SPERRA 16S
RED DIAMOND D SPERRA 882L

RED SIX MILE AVIATOR 217P OSF
RED GEIS MISS SKY 91'02
RED SSS IMPRINT 143H
RED VIDAL'S MISS EUCLA 345D
RED BAR-E-L APPROVAL 4L
RED BAR THREE H FAY 44G
RED LAZY M SUPER BOWL 19C
RED DIAMOND D SPERRA 882F

Bred to Red Soo Line On Target 9308 on June 6, 2015. Exposed to Red Nordan 908Y Boomer 760A from June 23 to August 30, 2015.

BW: 80 lbs. Adj WW: 617 lbs. Adj YW: 814 lbs.

EPDs	BW	WW	YW	Milk	TM	CE	MCE
	-0.2	47	67	15	39	1.6	6.3

118 - 116Z

Red Nordan 16W *Sperra* 116Z

RJG 116Z 1872868 Apr. 22, 2012 Female

RED BCAR WILD CARD (E+E+)
RED NORDAL CARDPLAYER
RED KBJ HEATHER 879P

RED GEIS AVIATOR 71'06 OSF
RED NORDAL 16S SPERRA 16W
RED CRESCENT CREEK SPERRA 16S

BCAR RANCHER 8'00 (EE+)
BREED CREEK PRIDE 33F 21'98 (EE+)
RED ROD RAM 426M
RED GEIS ICING 137'02
RED SIX MILE AVIATOR 217P OSF
RED GEIS MISS SKY 91'02
RED BAR-E-L GRID IRON 109P
RED DIAMOND D SPERRA 882L

Bred to Red Blairs Kargo 47Z on June 11 and exposed to him from June 23 to August 30, 2015.

BW: 76 lbs. Adj WW: 723 lbs. Adj YW: 877 lbs.

EPDs	BW	WW	YW	Milk	TM	CE	MCE
	0.8	65	100	13	43	0.8	5.7

119 - 6Z

Red Nordal 6P *Christie* 6Z

RJG 6Z 1872862 Mar. 26, 2012 Female

RED BCAR WILD CARD (E+E+)
RED NORDAL CARDPLAYER
 RED KBJ HEATHER 879P
 RED BUF CRK DYNAMICS 3820 AMF OSF MAF
RED SMW CHRISTY 6P
 RED SMW CHRISTY 40M

BCAR RANCHER 8'00 (EE+)
 BREED CREEK PRIDE 33F 21'98 (EE+)
 RED ROD RAM 426M
 RED GEIS ICING 137'02
 RED RCN DYNAMO 732 OSF MAF
 RED BUF CRK PRIMROSE 3150 OSF
 RED BVR RAB-STAR 56C MAF OSF
 RED SMW CHRISTY 9J

When touring the pasture, I always take a little extra time to admire this female. She is as fault free and ideal structured as any female we have raised. She has a perfect udder design. She is smooth made through out while displaying exceptional length and width of body. Her dam has maintained herself as one of our most consistent low birth while maintaining excellent growth characteristics in her progeny. Christie 6Z is sired by our Wildcard son, Cardplayer 879W. His dam was a feature at the 2008 KBJ sale. He has sired sons and daughters that have excelled in calving ease growth and top maternal values. Christie 6Z will be one of our very best on offer. She is a unique total package. **Exposed to Red Blairs Kargo 47Z from June 2 to August 30, 2015.**

BW: 80 lbs. Adj WW: 594 lbs. Adj YW: 814 lbs.

EPDs	BW	WW	YW	Milk	TM	CE	MCE
	-1.9	38	54	14	35	8.1	6.4



Lot 119

120 - 202Z

Red Nordal 202P *Lana* 202Z

RJG 202Z 1879682 Apr. 5, 2012 Female

RED BCAR WILD CARD (E+E+)
RED NORDAL CARDPLAYER
 RED KBJ HEATHER 879P
 RED WILDMAN DENALI 19L OSF
RED SIX MILE LANA 202P
 RED SIX MILE LANA 919M

BCAR RANCHER 8'00 (EE+)
 BREED CREEK PRIDE 33F 21'98 (EE+)
 RED ROD RAM 426M
 RED GEIS ICING 137'02
 RED FCC RAMBO 502 OSF
 RED TOWAW LAKIMA 1S
 RED CR SKY 56K
 RED SIX MILE LANA 446B

Another Cardplayer 879W daughter from one of our most prolific calving ease females. Lana 202P has been a herd breeding dam with her consistency in calving ease, fertility, and disposition. 202P is proof that breeding power comes in a neat package. **Bred to Red Blairs Kargo 47Z on May 21, 2015. Exposed to Red Nordal 908Y Boomer 760A from June 23 to August 30, 2015.**

BW: 78 lbs. Adj WW: 626 lbs. Adj YW: 817 lbs.

EPDs	BW	WW	YW	Milk	TM	CE	MCE
	-1.5	41	59	15	37	5.8	7.2



Lot 120

121 - 226Z

Red Nordal 126W *Chi* 226Z

RJG 226Z 1872869 Apr. 28, 2012 Female

RED BCAR WILD CARD (E+E+)
RED NORDAL CARDPLAYER
 RED KBJ HEATHER 879P
 RED GEIS AVIATOR 71'06 OSF
RED NORDAL 126T CHI 126W
 RED NORDAL126K CHI 126T

BCAR RANCHER 8'00 (EE+)
 BREED CREEK PRIDE 33F 21'98 (EE+)
 RED ROD RAM 426M
 RED GEIS ICING 137'02
 RED SIX MILE AVIATOR 217P OSF
 RED GEIS MISS SKY 91'02
 RED MINBURN WINDY 5178
 RED KORAN CHI 126K 358

Chi 226Z will make a match for another Cardplayer daughter in Lot 119, 6Z. Chi 226Z fits the model of the Cardplayer 879W females with her pattern of correctness udder structure and dark red colour. Her dam 126W is a hard working easy keeping cow that has made the Red Angus female a popular choice in the industry. **Exposed to Red Blairs Kargo 47Z from June 14 to August 30, 2015. Observed bred June 23.**

BW: 72 lbs. Adj WW: 739 lbs. Adj YW: 822 lbs.

EPDs	BW	WW	YW	Milk	TM	CE	MCE
	1.5	60	91	14	42	0.9	5.6

122 - 979Z

Red Nordal 997J *Spice* 979Z

RJG 979Z 1880213 Apr. 5, 2012 Female

RED BCAR WILD CARD (E+E+)
RED NORDAL CARDPLAYER
 RED KBJ HEATHER 879P
 RED CROWFOOT CAPTAIN 1B
RED CROWFOOT SPICE 997J
 RED CROWFOOT SPICE 778G

BCAR RANCHER 8'00 (EE+)
 BREED CREEK PRIDE 33F 21'98 (EE+)
 RED ROD RAM 426M
 RED GEIS ICING 137'02
 RED BIEBER DSIGN 1325-082
 RED CROWFOOT BRNDINA 4Z
 RED GLACIER LOGAN OSF MAF
 RED CROWFOOT SPICE 385C

Cardplayer 879W daughters have matured into first rate dams. They are moderate framed and sound made. Spice 979Z will uphold this tradition. **Bred to Red Blairs Kargo 47Z on May 29, 2015. Exposed to Red Nordal 908Y Boomer 760A from June 23 to August 30, 2015.**

BW: 76 lbs. Adj WW: 634 lbs. Adj YW: 802 lbs.

EPDs	BW	WW	YW	Milk	TM	CE	MCE
	-0.9	42	66	13	36	3.4	6.4



123 - 131Z

Red Nordal 1131T *Lady* 131Z

RJG 131Z 1872871 Apr. 10, 2012 Female

RED BCAR WILD CARD (E+E+)
RED NORDAL CARDPLAYER
 RED KBJ HEATHER 879P

BCAR RANCHER 8'00 (EE+)
 BREED CREEK PRIDE 33F 21'98 (EE+)
 RED ROD RAM 426M
 RED GEIS ICING 137'02
 RED MLK CRK CUB 722 MAF OSF
 RED CROWFOOT BLACKBIRD 9173J
 RED FORSTER CHIEF 7182ET
 RED CROWFOOT LADY 626F

Another Cardplayer daughter that is entering her prime production years. She is moderate framed and sound made with a model Red Angus udder attachment. **Exposed to Red Blairs Kargo 47Z from June 2 to August 30, 2015.**

BW: 82 lbs. Adj WW: 623 lbs. Adj YW: 823 lbs.

EPDs	BW	WW	YW	Milk	TM	CE	MCE
	1.9	56	90	18	46	-1.7	0.8

124 - 131A

Red Nordal *Lady* 131A

RJG 131A 1872982 Apr. 14, 2013 Female

RED BCAR WILD CARD (E+E+)
RED NORDAL CARDPLAYER
 RED KBJ HEATHER 879P

BCAR RANCHER 8'00 (EE+)
 BREED CREEK PRIDE 33F 21'98 (EE+)
 RED ROD RAM 426M
 RED GEIS ICING 137'02
 RED MLK CRK CUB 722 MAF OSF
 RED CROWFOOT BLACKBIRD 9173J
 RED FORSTER CHIEF 7182ET
 RED CROWFOOT LADY 626F

RED CROWFOOT BIG DADDY 2058M
RED NORDAL LADY 1131T
 RED CROWFOOT LADY 1131L

A young Cardplayer daughter that has done outstanding on her first try. Her Kargo son is one of our favourites of the pen. **Exposed to Red Blairs Kargo 47Z from June 15 to August 25, 2015.**

BW: 76 lbs. Adj WW: 623 lbs. Adj YW: 787 lbs.

EPDs	BW	WW	YW	Milk	TM	CE	MCE
	0.5	60	97	18	46	-1.7	0.8

125 - 146Z

Red Nordal 146L *Syringa* 146Z

RJG 146Z 1872864 Apr. 8, 2012 Female

RED CG ON TARGET 18T
RED SOO LINE ON TARGET 9308
 RED SOO LINE PENNY 7079

RED DIMLER INDEED 446P
 RED TVB ELWAY 12K
 RED SVR CONCLUSION 144P
 RED SOO LINE PENNY 5295
 RED SIX MILE ICEBERG 730D
 RED SIX MILE COLA 49Z
 RED CR 17 PROOF 55G
 RED GEIS SYRINGA 185'91

RED SIX MILE ICING 82G
RED GEIS SYRINGA 146'01
 RED GEIS SYRINGA 29'99

Syringa 146Z is a daughter of the designated elite dam Red Geis Syringa 146L. 146Z is a performance daughter of the highly carcass valued On Target. She contains an interesting combination of leading performance, carcass, and maternal values. **Bred to Red Blairs Kargo 47Z on June 2, 2015. Exposed to Red Twin Heritage 24A from June 24 to August 30, 2015.**

BW: 86 lbs. Adj WW: 721 lbs. Adj YW: 907 lbs.

EPDs	BW	WW	YW	Milk	TM	CE	MCE
	2.4	70	101	17	48	0.5	-0.5

126 - 101A

Red Nordal 701W *Susan* 101A

RJG 101A 1827489 Mar. 29, 2013 Female

RED CG ON TARGET 18T
RED SOO LINE ON TARGET 9308
 RED SOO LINE PENNY 7079

RED DIMLER INDEED 446P
 RED TVB ELWAY 12K
 RED SVR CONCLUSION 144P
 RED SOO LINE PENNY 5295
 RED T-K PERCISION 21P
 RED BWB TROPHY 4'02 OF CANYON OSF
 RED SIX MILE RICOCHET 478R
 RED SIX MILE SUSAN 30N

RED T-K SUM-MIT 28T OSF MAF NHF AMF
RED SIX MILE SUSAN 701W
 RED SIX MILE SUSAN 272T

Susan 101A is a two-year-old On Target daughter that is maturing into an impressive young dam. Susan 701W has established herself as a reliable constant producer. **Exposed to Red Blairs Kargo 47Z from June 2 to August 30, 2015.**

BW: 76 lbs. Adj WW: 632 lbs. Adj YW: 783 lbs.

EPDs	BW	WW	YW	Milk	TM	CE	MCE
	0.0	58	85	13	47	-1.4	2.3

127 - 368A

Red Nordal 368S *Lass* 368A

RJG 368A 1872873 Apr. 6, 2013 Female

RED CG ON TARGET 18T
RED SOO LINE ON TARGET 9308
 RED SOO LINE PENNY 7079

RED DIMLER INDEED 446P
 RED TVB ELWAY 12K
 RED SVR CONCLUSION 144P
 RED SOO LINE PENNY 5295
 RED RD DIVIDEND 7F
 RED L-DEE FINESSE 41F
 RED RCRA WHEEL'O FORTUNE
 RED VALLEYHILLS LANA 5W

RED L-DEE DIVIDEND JR 141K
RED DEER RANGE LASS 368S
 RED DEER RANGE LANA 113E

Lass 368A is a moderate framed On Target daughter from an ideal sired dam. A family member sells in the black section as Lot 61, 468Z. **Exposed to Red Blairs Kargo 47Z from June 2 to August 30, 2015.**

BW: 84 lbs. Adj WW: 618 lbs. Adj YW: 783 lbs.

EPDs	BW	WW	YW	Milk	TM	CE	MCE
	1.1	54	72	14	39	0.1	1.8

"ANNIE" COW FAMILY

LOT 128 - RJG 317Y, LOT 129 - RJG 170A, LOT 130 - RJG 170B

Annie 17S is part of the famed Red lineage of the Crescent Creek Annie family. The Annie 17S heritage is very prominent in the two daughters, Annie 317Y and Annie 170A. 317Y from the unique Smash 7S sire and 170A from the highly predictable Cardplayer 879W.

Lot 130 Annie 170B is one of our favorites in the Red group. She has been a standout from birth with her striking profile combined with ample depth and volume. The Cardplayer daughters are many of our very best dams. This young lady has a bright future ahead of her.

128 - 317Y

Red Nordal 17S *Annie* 317Y

RJG 317Y 1712422 Mar. 21, 2011 Female

RED LAZY MC SMASH 41N OSF
RED LAZY MC SMASH 7S
RED LAZY MC MISTRESS 5L

RED BAR-E-L GRID IRON 109P
RED CRESCENT CREEK ANNIE 17S
RED CRESCENT CREEK ANNIE 4L

Exposed to Red Twin Heritage Hustle 24A from May 28 to August 30, 2015.

BW: 82 lbs. Adj WW: 600 lbs. Adj YW: 792 lbs.

EPDs	BW	WW	YW	Milk	TM	CE	MCE
	1.3	49	72	17	43	-0.7	2.4

RED SSS BOOMER 803B
RED LAURON YB ROSA 11G
RED LAZY MC NEW RELEASE 29F
RED LAZY MC MISTRESS 44J
RED BAR-E-L APPROVAL 4L
RED BAR THREE H FAY 44G
RED FORSTER CHIEF 7182ET
RED CRESCENT CREEK ANNIE 68C

129 - 170A

Red Nordal 17S *Annie* 17A

RJG 170A 1872872 Apr. 3, 2013 Female

RED BCAR WILD CARD (E+E+)
RED NORDAL CARDPLAYER
RED KBJ HEATHER 879P

RED BAR-E-L GRID IRON 109P
RED CRESCENT CREEK ANNIE 17S
RED CRESCENT CREEK ANNIE 4L

Exposed to Red Blairs Kargo 47Z from June 10 to August 25, 2015.

BW: 88 lbs. Adj WW: 584 lbs. Adj YW: 787 lbs.

EPDs	BW	WW	YW	Milk	TM	CE	MCE
	2.6	56	84	15	41	0.5	4.1

BCAR RANCHER 8'00 (EE+)
BREED CREEK PRIDE 33F 21'98 (EE+)
RED ROD RAM 426M
RED GEIS ICING 137'02
RED BAR-E-L APPROVAL 4L
RED BAR THREE H FAY 44G
RED FORSTER CHIEF 7182ET
RED CRESCENT CREEK ANNIE 68C

130 - 170B

Red Nordal 17S *Annie* 170B

RJG 170B 1882599 Apr. 21, 2014 Female

RED BCAR WILD CARD (E+E+)
RED NORDAL CARDPLAYER
RED KBJ HEATHER 879P

RED BAR-E-L GRID IRON 109P
RED CRESCENT CREEK ANNIE 17S
RED CRESCENT CREEK ANNIE 4L

Exposed to Red Nordal 908Y Boomer 760A from June 16 to August 30, 2015.

BW: 80 lbs. Adj WW: 739 lbs. Adj YW: 892 lbs.

EPDs	BW	WW	YW	Milk	TM	CE	MCE
	1.3	62	95	15	41	0.5	4.1

BCAR RANCHER 8'00 (EE+)
BREED CREEK PRIDE 33F 21'98 (EE+)
RED ROD RAM 426M
RED GEIS ICING 137'02
RED BAR-E-L APPROVAL 4L
RED BAR THREE H FAY 44G
RED FORSTER CHIEF 7182ET
RED CRESCENT CREEK ANNIE 68C



Lot 130

THE END RESULTS

What we strive for in our program where it counts. Raising cattle that excel in the feedlot and on the rail for our customers.



131 - 434Z

Red Nordal 434T *Cassie* 434Z

RJG 434Z 1872859 Feb. 17, 2012 Female

RED COMPASS MULBERRY 449M
 RED FINE LINE MULBERRY 26P OSF AMF MAF DDF
 RED DUS FAYETTE 8G
 RED BLAIR'S TALLADEGA 218W
 RED TER-RON MAMBO 28K
 RED JCC LASS 41N 1164846 OSF
 RED JCC LASS 63K OSF
 RED KBJ KNIGHT 17J
 RED GEIS KNIGHT HAWK 14'02
 RED GEIS SAMARIE 234'96
 RED SOO LINE LASSIE 7434
 RED VGW RAMBLER 1000 OSF
 RED SOO LINE MISS RAMBLER 222M
 RED LPC LASSIE'S EMPRESS 21K

Lassie 434Z is a unique combination of some of the breeds very best sires, Mulberry Mambo 28K and the Immortal Knight Hawk. Her sire Talladega has proven to be one of Mulberry's very best sons. **Exposed to Red Blairs Kargo 47Z from June 2 to August 30, 2015.**

BW: 76 lbs. Adj WW: 519 lbs. Adj YW: 781 lbs.

EPDs	BW	WW	YW	Milk	TM	CE	MCE
	-2.3	42	68	11	37	3.5	9.5

132 - 225A

Red Nordal 225U *Lady Belle*

RJG 225A 1881947 Mar. 18, 2013 Female

RED COMPASS MULBERRY 449M
 RED FINE LINE MULBERRY 26P OSF AMF MAF DDF
 RED DUS FAYETTE 8G
 RED BLAIR'S TALLADEGA 218W
 RED TER-RON MAMBO 28K
 RED JCC LASS 41N 1164846 OSF
 RED JCC LASS 63K OSF
 RED BCAR WILD CARD (E+E+)
 RED LLB WILD CARD 06555
 RED SOO LINE KURUBA 80P
 RED LLB LADY BELLE 251U
 RED BLADES DIVIDEND 44P
 RED LLB LADY BELLE 251S
 RED LLB LADY BELL 229M

A well structured two year old Talladega daughter. Her dam is a heavy milking Wild Card daughter. Lady Belle 225A carries the service of Kargo 47Z. **Exposed to Red Blairs Kargo 47Z from June 12 to August 26, 2015.**

BW: 78 lbs. Adj WW: 540 lbs. Adj YW: 788 lbs.

EPDs	BW	WW	YW	Milk	TM	CE	MCE
	-0.5	54	88	11	39	0.4	5.8

133 - 744B

Red Nordal 744T *Blackwood* 744B

RJG 744B 1880225 Apr. 24, 2014 Female

BCAR RANCHER 8'00 (EE+)
 BREED CREEK PRIDE 33F 21'98 (EE+)
 RED BCAR WILD CARD (E+E+)
 RED ROD RAM 426M
 RED NORDAL CARDPLAYER
 RED KBJ HEATHER 879P
 RED GEIS ICING 137'02
 RED HEARTLAND KNIGHT CHARM 11L
 RED TER-RON CALLOWAY 15R
 RED THAT'LL DO RED WING 15A
 RED LLB BLACKWOOD 744T
 RED BRYLOR SDL YUKON 163N
 RED LLB BLACKWOOD 456R
 RED LLB BLACKWOOD 296N

Cardplayer 879W from one of our bigger framed Calloway daughters. Performance from the dam and lots of milk infused from the sire. **Bred to Red Blairs Kargo 47Z on May 28, 2015. Exposed to Red Nordal 908Y Boomer 760A from June 16 to August 3, 2015.**

BW: 78 lbs. Adj WW: 767 lbs. Adj YW: 918 lbs.

EPDs	BW	WW	YW	Milk	TM	CE	MCE
	1.2	71	112	12	42	0.0	3.9

134 - 545B

Red Nordal 545S *Lucy* 545B

RJG 545B 1872876 Apr. 4, 2014 Female

BCAR RANCHER 8'00 (EE+)
 BREED CREEK PRIDE 33F 21'98 (EE+)
 RED BCAR WILD CARD (E+E+)
 RED ROD RAM 426M
 RED NORDAL CARDPLAYER
 RED KBJ HEATHER 879P
 RED GEIS ICING 137'02
 RED T-K DUSTER 10K
 RED TOWAW PRINCESS 17D
 RED T-K DEADLINE 5M
 RED FLYING K PATRIOT 31A
 RED DEER RANGE LUCY 545S
 RED DEER RANGE LUCY 59J
 RED DEER RANGE LUCY 137D

Lucy 545B is one of our favourites from the 2014 calf crop. Her dam is impressive when in full production. The Cardplayer daughters have continued to shine each year as more enter production. **Bred to Red Blairs Kargo 47Z on June 7, 2015. Exposed to Red Nordal 908Y Boomer 760A from June 16 to August 30, 2015.**

BW: 84 lbs. Adj WW: 680 lbs. Adj YW: 887 lbs.

EPDs	BW	WW	YW	Milk	TM	CE	MCE
	1.4	50	77	13	42	0.6	2.7

135 - 22B

Red Nordal 22S *Fayet* 22B

RJG 22B 1881643 Apr. 18, 2014 Female

BCAR RANCHER 8'00 (EE+)
 BREED CREEK PRIDE 33F 21'98 (EE+)
 RED BCAR WILD CARD (E+E+)
 RED ROD RAM 426M
 RED NORDAL CARDPLAYER
 RED KBJ HEATHER 879P
 RED GEIS ICING 137'02
 RED HOLDEN HI HO 574 OSF
 RED HOLDEN HI HO 7151 OSF MAF
 RED DOUBLE FORK 061 C
 RED MEM FAYET 22S
 RED MLK CRK CUB 722 MAF OSF
 RED MEM FAYET 18M
 RED BAR THREE H FAYET 4H

Fayet 22B is a powerful daughter of Cardplayer 879W. She is deep sided, wide bodied, and full sized. Her deep red colour is part of Cardplayer 879W's pattern, plus the proven capabilities of his daughters will shine through on this female also making her an excellent replacement choice. **Exposed to Red Nordal 908Y Boomer 760A from June 14 to August 30, 2015.**

BW: 78 lbs. Adj WW: 708 lbs. Adj YW: 841 lbs.

EPDs	BW	WW	YW	Milk	TM	CE	MCE
	0.5	70	109	13	44	0.2	4.7

136 - 491B

Red Nordal 491X *Emily* 491B

RJG 491B 1881644 Apr. 27, 2014 Female

RED CORNER CREEK CASH 2R MAF OSF
 RED SOO LINE RHONDA 5109 OSF MAF
 RED SOO LINE REVOLUTION 8084
 RED SIX MILE HERCULES 19G
 RED NORDAL REVOLUTION 73X
 RED LAZY MC CHRISTY 61J
 RED SOO LINE CHRISTY 13M
 RED SIX MILE AVIATOR 217P OSF
 RED GEIS AVIATOR 71'06 OSF
 RED GEIS MISS SKY 91'02
 RED NORDAL 491R EMILY 491X
 RED CRESCENT CREEK HI HO 102M
 RED SOO LINE EMILY 5491
 RED LPC EMILY'S CANYON 25L

Emily 491B is based from our Emily 491R female who was a feature and top seller from the SooLine program as a bred heifer. This family is big on maternal traits in a moderate framed package. **Bred to Red Blairs Kargo 47Z on June 7, 2015. Exposed to Red Nordal 908Y Boomer 760A from June 14 to August 30, 2015.**

BW: 80 lbs. Adj WW: 739 lbs. Adj YW: 847 lbs.

EPDs	BW	WW	YW	Milk	TM	CE	MCE
(PE)	2.6	64	88	13	45	-0.7	4.8

COMMERCIAL FEMALES

The group of commercial females on offer consists of our total replacement group of 2014 born females plus all of our cows up to four years of age. The decision was made to offer all of our young females on the commercial side, right along with our purebred females. The commercial females will be sold following the purebred section.

All of the females are on a full herd health program. They have received Pfizer Gold FP 5 pre breeding, along with Blackleg on the yearling females. The cows are on ScourGuard 4KC. The heifers will have their initial shot of ScourGuard 4KC. All females will be poured with Ivermectin. All females will be pregnancy checked approximately 10 days before sale day by Corman Park Veterinary Clinic.

THE OFFERING:

170 BRED YEARLING FEMALES

70 Black Bred Heifers

Approximately half of the Black heifers are Simmental X Angus. The remaining are Black Angus sired out of Angus or Angus cross dams. All are bred Black Angus from June 19 to September 1.

100 Red and Red Blaze Heifers

Consisting of Simmental X Red Angus and Red Angus sired from Simmental X Red Angus dams. All are bred Red Angus from June 19 to September 1.

There also will be a group of Black and Red Lim-Flex females included in the yearling heifers.

COMMERCIAL COWS

100 young cows aged two to five years old. These cows are Red/Red Brockle and Black/Black Brockle. They are Simmental/Angus or Limousin/Angus. There are approximately 15 Red or Black Angus sired with Hereford/Angus dams. The cows are bred Black Angus or Limousin from June 20 to September 1.

The females will be sorted into groups of approximately four to six head per lot, matching closely half sisters and breeding dates.

A supplement sheet will be available sale day with preg. check information, plus information on the members of each lot for sire and dam breed.



Service Sire for Black Heifers



Service Sire for Red Heifers



Service Sire For Cows

**CHECK OUR WEBSITE
OR DLMS.CA FOR
MORE PICTURES
AND VIDEOS OF
THE COMMERCIAL
FEMALES.**

TERMS:

The terms of the sale are cash or cheque, payable at par at the sale location. The right of property shall not pass until after settlement has been made; no invoicing on buyers in attendance unless previous arrangements have been made. Every animal sells to the highest bidder and in cases of disputes, the auctioneer's decision will be final. Announcements from the auction block will take precedence over the printed matter in the catalogue. Current exchange rates will be announced sale day. All monies are in Canadian funds.

CERTIFICATE OF REGISTRATION:

Each animal will carry papers issued by the Canadian Angus and Limousin Associations unless otherwise stated. A certificate of registry duly transferred will be furnished to the buyer for each animal after payment has been made.

HEALTH:

All animals in the sale have met all necessary health requirements.

GUARANTEE:

Each animal becomes the purchaser's risk immediately after the animal is sold. All animals in this sale will be sold under the terms and guarantees set forth by the Canadian Angus and Canadian Limousin Associations with regard to health, freedom from defects and from both reproductive and specific genetic unsoundness.

PREGNANCY INFORMATION:

All serviceable age females have been pregnancy examined by an accredited veterinarian, giving an estimated length of gestation. This estimated gestation period shall be used only as a guideline to calving and is not a guarantee of actual service.

LIABILITIES:

All persons attend the sale at their own risk. The seller, facility owner and sale manager assume no liability legal or otherwise, for any accidents that occur. It is understood that T Bar C Cattle Co. Ltd. is acting only as a medium between buyer and seller and is not responsible for any failure on the part of either party to live up to his obligations. Neither does T Bar C Cattle Co. Ltd. assume any financial obligations to collect or enforce collection of any monies between parties and any legal action that may in exceptional cases be taken must be between the buyer and the seller. T Bar C Cattle Co. Ltd. assumes no responsibility for any credit extended by the seller to the buyer. The buyer must look to the seller for fulfillment of all guarantees and representations made hereunder.

DELIVERY:

Every assistance will be given in getting your purchases home. Each animal becomes the risk of the purchaser as soon as sold.

PHONE, MAIL, WIRE BIDS:

Bidders unable to attend the sale may phone, wire or mail their bids and instructions to the sale manager, auctioneer or special representatives. Bids must be received in sufficient time prior to the sale.

INSURANCE:

We strongly recommend that insurance is purchased for full value.

ERRORS:

All announcements at sale time, written or oral, supersede any written material in the catalogue.

NORDAL LIMOUSIN & ANGUS

Bull Sale

February 18, 2016 • 1:00 pm
Saskatoon Livestock Sales
Saskatoon, SK

**Selling 75 Rising
Two Year Olds:**

25 Polled Limousin
• **Red & Black**

30 Black Angus

20 Red Angus



NORDAL LIMOUSIN & ANGUS

PO Box 85
Simpson, SK S0G 4M0
Rob Garner
Cell: 306-946-7946
nordallimousin@sasktel.net

View the catalogue online at
www.nordallimousin.com
or
www.buyagro.com

**RETURN UNDELIVERABLE
CANADIAN ADDRESSES TO:**

**T BAR C CATTLE CO. LTD.
4-3342 MILLAR AVENUE
SASKATOON, SK S7K 7G9**



CREATED BY TODAY'S PUBLISHING