

BLACK ANGUS BULLS • ANGUS INFLUENCE BULLS
ANGUS INFLUENCE FEMALES



13TH ANNUAL

BLUE
COLLAR

BULL
SALE

SATURDAY, APRIL 13, 2019 • 1:00 P.M.
HEARTLAND LIVESTOCK • YORKTON, SK

13TH ANNUAL

BLUE COLLAR BULL SALE

WELCOME

Spring has finally sprung after a tough never ending February and it's time for the Blue Collar Bull Sale! Three great families have set forth a strong set of Angus bulls for your appraisal yet again. This serves as a great benefit for you the buyer as each herd brings in various genetics that will surely suit your needs from performance bulls to run with your cows to those with a lighter birth weight to work in the heifer pasture. They all share the common traits you've come to expect from your Angus bulls from the Blue Collar Bull Sale, they will calve easy, perform well and sport a disposition that makes them easy to handle in the corral. The Burkells, Fricks and Tibbles all carry a lot of pride in the offering and as we all know this cattle industry is a year round commitment as each season comes with its challenges but when it comes to putting this catalogue together to present the bulls to you it becomes worth it all! It is indeed a pleasure to work with these families for this event.

We hope that you can join us the day before the sale to preview the offering and have a chance to visit in a one on one scenario at Heartland Livestock and take in some pre sale hospitality. Should you be unable to make the sale but wish to bid on any of the lots feel welcome to contact any of the consignors, sales staff or myself to discuss your needs, we are here to help.

See you sale day!

Shane Castle

Castlerock Marketing



Northern View Angus



Parkwood Farm



Swan Hills Ranch

**CASTLEROCK
MARKETING**

SALE MANAGEMENT

CASTLEROCK MARKETING

Shane Castle

Cell: 306-741-7485

castlerock.mktg@sasktel.net

Dean McAvoy

306-784-2241

Watch and Bid Online

Can't make it to the sale?
Internet Bidding Available.

To view this sale visit www.dlms.ca, Fill out the registration form located under registration and sign-up for your free user account and select a username and password.

BIDDERS - To be approved as a bidder, Log in to dlms.ca and click BUYER APPROVAL tab, select the sale you are interested in bidding at and click sign up.

For more information

Call DLMS Reps:

Whitney Bosovich 780.991-3025

Mark Shologan 780.699.5082

DLMS
www.dlms.ca

Saturday, April 13, 2019 • 1:00 p.m.
Heartland Livestock • Yorkton, SK

SALE DAY PHONES

Shane: _____ 306-741-7485
Troy: _____ 306-728-8911
Scott B: _____ 306-621-3638
Scott T: _____ 204-734-0210
Heartland Livestock: _____ 306-783-9437 or 306-786-3634

CONSIGNORS

Northern View Angus

Box 211, Neudorf, SK S0A 2T0
Troy, Amy, Bret, Alexis & Talon Frick
Cell: 306-728-8911
Alvin & Marlene Frick

306-728-3295 • northernviewangus@imagewireless.ca

Parkwood Farm

Box 48, RR 1, Yorkton, SK S3N 2V3
Jack & Joyce
306-782-7112

Scott, Mandy, Katie, Landon & Macy Burkell

306-783-7986 • Cell: 306-621-3638
s.a.burkell@sasktel.net

Swan Hills Ranch

Box 2471, Swan River, MB R0L 1Z0
Scott, Cindy, Martina, Robyn & Parker Tibble
Cell: 204-734-0210 • Ranch: 204-539-2570
stibblemail@gmail.com

View the Catalogue Online at:

www.buyagro.com

www.castlerockmarketing.com

View the Sale Bull Videos

Online at:

www.cattlevids.ca

Find us on Facebook



AUCTIONEER:

Clayton Hawryluk, Heartland
_____ 306-621-3824

BLOCKMAN:

Shane Castle _____ 306-741-7485

RINGMEN:

Harvey Exner _____ 306-621-5486

Hugh Elliot _____ 306-230-7805

Brad Knutson _____ 306-595-4454

_____ or 306-549-7637

Levi Hall _____ 306-641-6271

Lynn Stehr _____ 204-734-8990

HOTEL ACCOMMODATIONS:

Days Inn, Yorkton _____ 306-783-3297

LIVESTOCK INSURANCE:

Farrell Agencies _____ 306-783-4477

DLMS:

Whitney Bosovich _____ 780-991-3025

GREEN TAG PROGRAM:

Canadian Angus Association
_____ 403-571-3580

BLUE COLLAR HERD PERSON:

Kevin Clelland _____ 204-281-0961

13TH ANNUAL

BLUE COLLAR BULL SALE

OFFERING:

67 Black Angus Bulls

1 Black Angus
Influence Bull

7 Black Angus Females

23 Angus Influence Females

View the bulls

Friday, April 12

from 6:30-8:00 PM

Saturday, April 13

Lunch at 11:00 AM

SALE TIME 1:00 PM

WE WOULD LIKE
TO THANK
THE FOLLOWING
SPONSORS...



\$150 Sponsorship
to the pre-sale meal.

Double R Autobody
\$75 Sponsorship
to the post sale meal.

Welcome to the 13th Annual Blue Collar Bull Sale. The Blue Collar group hopes that you and your family have had a wonderful year.

As I sit down to write this welcome I am thawing my fingers and face after doing 5:30 am chores with another -30 degree Celsius day with a wind chill in the -40s. I am also reflecting on the February that has become known as the coldest on record in over 80 years. One also thinks of how resilient we and our Angus cattle are for surviving through this weather and even calving out in this climate.

Many folks have said, "No sense complaining about the weather. Can't do anything about it anyway." There are days one wants to have a less than appropriate response for those folks. While it is true that the weather is uncontrollable, a person can still try to minimize the effect it has on a person. You can go south for awhile. For those of you who get to do that, good for you. You can calve in May and June. For those of you who choose that option, good for you. But for those of us who opt to calve in January and February, you need to be prepared. Proper calving barns, proper cow and calf shelters, cow cameras, good mama cows and vigorous and hardy calves and maybe some moo muffs are essentials.

All of the variables for good success for your cattle operation, with the exception of the weather, are within your control. Especially the selection of quality genetics for good maternal qualities, calves easily born with the will to live and then grow well into productive cattle for you at sale time and in your replacement pen.

While we, as the Blue Collar group, can't help you with many of the variables to create a positive livestock experience at your place, we can source out and provide the best Angus genetics we can to help your breeding program. Just as you study the stack of bull sale catalogues that come to your mail boxes, so do we. We also study the semen catalogues we receive. This is our effort to try to improve our herd and ultimately yours though acquiring the best genetics we can to produce cattle that are profitable for us and you.

Our cow herds are built on years of careful selection and culling for fertility, structure and performance. We all have extensive AI and/or embryo programs. Each of us research and plan our breeding programs to strive to improve our own herds but also to provide you with the best possible genetics we can in order to present you with, "Affordable, Honest, Hardworking cattle that'll get'er done."

All of our children are extensively involved in the day to day operation of our farms, promotion and showing of our animals and in the extensive planning of our breeding programs. You will see all that each of our families have all hands on deck to make this bull sale come off. This is very exciting for each of us having another generation interested and involved in the Blue Collar herds.

Throughout the catalogue you will find an entire host of information to aid you in your bull or heifer selection. There are footnotes, pictures, pedigrees, weights, sire and dam information... please feel free to contact any one of us for more information or stop by our farms to view the bulls prior to the sale.

The Blue Collar Bull Sale Group would like to thank the following for their contribution to the success of our sale:

- Everyone who attended last year's sale, our bidders and buyers.
- All our friends and family who helped us before, during and after the sale.
- All our sponsors. We do business with all of them and recommend you give them a try, too.
- To Castlerock Marketing, Brad Knutson, Hugh Elliot, Levi Hall and Kyle Procopetz, the Heartland staff and all our friends for their work on our sale.

We believe that we have a solid and supportive team who can work to make sure that you are well taken care of and your livestock needs are met. Please contact any member of the Blue Collar Group or the sales staff with any questions to help you select the animals to meet your needs.

Once again we are going to start our sale with a group of three or five commercial heifers. Many of these heifers come from bulls that have been purchased from the Bull Collar consignors. Look to increase the productivity of your cow herd with these quality genetics.

We would also like to make you aware that Farrell Agencies will be on hand sale day to assist you with the insurance of your purchases. As breeders we will support you, the buyer, in every way we can to ensure our cattle work. However, there are unforeseen events which occur, like illness, injury, or death, which the buyer and seller cannot control or guarantee. For situations like this there is insurance. We strongly recommend you insure all your livestock purchases but want you to insure any cattle which will be going home to our respective farms for a while. Please refer to the back of the catalogue for all sale conditions.

We take pride in the fact that we have an increased number of repeat customers. Please refer to the list of last year's Blue Collar purchasers at the back of the catalogue. We truly enjoy the connections and socialization which is involved with our customers and the cattle business. We would like to invite you to give us a call or drop by our farms for a visit any time.

We would like to welcome you to the 13th Annual Blue Collar Bull Sale. Cattle will be arriving at Heartland Thursday and may be viewed anytime until sale time. Consider this your invitation to come to Heartland in Yorkton on Friday, April 12th from 6:30-8:00 PM for a viewing of the cattle and fellowship and to the sale on Saturday, April 13th at 11:00 AM for lunch and to view the cattle and for the sale at 1:00 PM.

See you at the Sale,
Blue Collar Sale Group

NORTHERN VIEW ANGUS

Well this was another interesting year for us weather wise. Moisture was tight after the beginning of July. Hay was decent but pastures needed very careful managing. Our cows had to work hard to get the calves to do as well as they did.

We have really worked on not pushing our bulls. Feeding them a ration of 1.5% of their body weight in grain/supplement and the balance of their ration with brome, timothy, orchard grass and millet hay. The hay is of excellent quality this year. We have worked really hard to monitor the feed intake of our bulls to ensure no overfeeding and to promote a sound growing bull that will work for you for the long term. They have free choice OLS #9 tubs to promote scrotal development, semen quality and structural soundness. The bulls are raised in large pens and/or pasture areas to allow for ample room to wander, rumble and explore.

Our goal is to breed for low to moderate birth weight calves with solid growth to weaning and yearling weights. We realize that we all sell cattle by weight at the end of the day so we seek out sires that will provide reasonable birth weights, solid performance numbers and good maternal qualities. We need females that are going to work too. Tried and true sires we have used are Cutting Edge, Special Focus, Substantial, Effective, South Dakota, Resource and Grand Slam 80C. New and exciting genetic options are Cartwright, Innovation, Front and Center and Thrive.

These yearlings are backed by strong cow families which we have been working at developing for a number of years now. Our female factory is one we are quite proud of. These bulls all have great cows in their pedigrees.

I have catalogued our bulls in sire groups and in numerical order of when they were born within that group. The oldest bull is first and the youngest bull is last of that sire group.

We are retaining a 1/3 semen interest in all our bulls unless otherwise stated.

This does not impact you owning the bull, the rights to walk the bull or the salvage value on the bull.

All it means is that if at some point we would like to draw semen for in herd use we would arrange at your convenience and our expense to do so.



Talon with Richard

THANKS TO
Century Glass and
Mark's Agency, Melville
for purchasing
Talon's steer, Richard.

Bieber Trucking
for purchasing
Alexis's steer, KJ.



Alexis with KJ



SAV **RESOURCE** 1441

Top 1% for Yearling Weight and Weaning Weight.

We used Resource for the shape, muscle and thickness he would provide. He is known as a foot and udder improver throughout the breed. With nearly 2000 progeny registered in Canada alone he has been tested really proven what he can do. We have three females working in our herd as of this spring. They each are deep powerful and broody females with excellent udders. Their calves are doing

great. The bulls are thick, shapely and powerful.

Lot 1



Northern View **RESOURCE** 118F

Lot 1 2052348 FTA 118F 23/01/2018 **Male**

RITO 707 OF IDEAL 3407 7075
SAV **RESOURCE** 1441 1707295
SAV BLACKCAP MAY 4136

NORTHERN VIEW NET WORTH 104Y
NORTHERN VIEW **BELLE** 107B 1795884
WWF AMBUSH BELLE 166P

R R RITO 707
IDEAL 3407 OF 1418 076
SAV 8180 TRAVELER 004
SAV MAY 2397
BELL NET RETURN 3U
NORTHERN VIEW TIBBIE 71R
BAD LANDS AMBUSH 45M
WWF ULTRAVOX BELLE 28M

We have a bull here that will catch your eye with his pen presence, shape and muscle expression. He comes from one of the breeds leading sires and a very hard working, good young cow. I believe this bull will add thickness and muscle to his calves. He has great shape and muscle to him. Irvin Madsen of Springside, SK purchased Belle 107B's Blue Collar offering in 2018.

EPD	BW	WW	YW	Milk	TM
	3.5	47	93	15	39

ACC	BW	Adj. 205	Adj. 365
	82	789	1319



Northern View
Net Worth 104Y
Maternal
Grandsire

Connealy **FRONT & CENTER**

Top 1% for Milk, Total Maternal, Scrotal and Calving Ease.

We used this bull on a few yearling heifers to try him out. Front and Center is unique outcross genetics. This is one of the only progeny registered in Canada. We liked the style of this bull and his overall numbers. Maternally he is to come from a very strong cow family.



Northern View **FRONT AND CENTER**

Lot 2

Lot 2 2074964 FTA 110F 21/01/2018 Male

This bull has calving ease written all over him. His 65 lb. birth weight, his -0.4 EPD and his shape makes him a bull that should be sought after for those sleep easy nights while calving heifers. The shape of his head is the image you would see in the dictionary under calving ease. The Tibbie cow family is a proven and solid one for us. For those of you looking to calve out some heifers next spring, mark this guy in your catalogue.

This bull is smooth and chiseled and is recommended for heifers.

EPD	BW	WW	YW	Milk	TM
-0.4	42	75	25	46	

ACC	BW	Adj. 205	Adj. 365
65	762	1262	



KESSLERS FRONTMAN R001
CONNEALY FRONT & CENTER 2039889
JAIS OF CONANGA 9585

CONNEALY FRONT PAGE 0228
KESSLERS BELL 0024
CONNEALY RIGHT ANSWER 746
JASE OF CONANGA 4660

CREEKVIEW IDEAL 4Y
NORTHERN VIEW TIBBIE 121D 1901485
NORTHERN VIEW TIBBIE 105X

VALLEY BLOSSOM IDEAL 1W
CREEKVIEW PRIDE 207T
NORTHERN VIEW QUANTUM 86P
NORTHERN VIEW TIBBIE 83T

Scheifelbein **EFFECTIVE** 61

Effective has only 133 progeny registered in Canada. We selected him for his incredible calving ease with a -2.1 birth EPD and his respectable growth numbers and fantastic scrotal development in his calves. He provides extremely good hair coats in his progeny. We have a number of Effective yearling females in our replacement pen. We are excited to see them working in our herd. We sold an Effective daughter this past fall in the Touch of Class Sale to J & S Angus of Kenaston, SK.



Northern View **RENAISSANCE** 83F

Lot 3

Lot 3 2037823 FTA 83F 09/01/2018 Male

CAR EFFICIENT 534
SCHIEFELBEIN EFFECTIVE 61 1707305
FROSTY ANSWER 3979

CFS BISMARCK 11X
NORTHERN VIEW LUCY 82A 1744127
NORTHERN VIEW LUCY 79X

K C F BENNETT EFFICIENT
CAR MISS SUSIE 308
S A V FINAL ANSWER 0035
FROSTY ELBA LIZZY 1106
S A V BISMARCK 5682
CFS LADY 8U
S A V FINAL ANSWER 0035
NORTHERN VIEW LUCY 85U

EPD	BW	WW	YW	Milk	TM	ACC	BW	Adj. 205	Adj. 365
-1.9	43	87	25	47		70	769	1371	

Here we have an outstanding calving ease prospect. Renaissance 83F is designed right, has super structure, great hair and excellent scrotal development. Lucy 82A has been an awesome female. We have a daughter working in our herd and there is one at Landon Bostock's at Indian Head, SK. We like her genetics so much we kept a son of hers last year and co-own him with Venture Farms at Roblin, MB. This bull is Grand Slam 121E. He is deep sided and a powerful bull with outstanding performance. We also have a maternal brother to 82A that we own and use with Bell Angus at Pense. So as you can see, the Lucy 82A and the Effective combination is a solid one. When you are looking for a heifer bull remember this guy's -1.9 BW EPD and 70 lb. birth weight.

Recommended for heifers.





B P F SPECIAL FOCUS 504

We wanted to find an outcross calving ease bull and we did with Special Focus. In selecting a calving ease sire we did not want to compromise performance. In Special Focus we get the weights plus strong maternal characteristics, excellent scrotal development and tonnes of eye appeal. The bulls and heifers all look great. The females we have producing in our herd are excellent moms. All progeny have tremendous temperament. Two Special Focus daughters have sons in the sale, Lot 13 and Lot 16. A paternal brother from us is working very well at Corvet Angus, Melita, MB. We sold a paternal daughter last fall to Calvin and Hayley Powell, Youngstown, AB at the Touch of Class Sale. I went on Youtube and watched video of this bull and that sealed the deal for us using him for a calving ease bull.

Northern View BULL'S EYE 85F



Lot 4

Lot 4	2037810	FTA 85F	07/01/2018	Male					
S A F FOCUS OF E R									
MYTTY IN FOCUS									
MYTTY COUNTESS 906									
B P F SPECIAL FOCUS 504 1644193									
J R SOMETHING SPECIAL									
B P F BLACK CASH 341									
B P F BLACK CASH 944									
VISIONTOPLINE ROYAL STOCKMAN									
VISION EDELLA 665									
TGA BLACKMAN 8311U									
NORTHERN VIEW PRINCESS 101Y									
NORTHERN VIEW PRINCESS 78W									
EPD	BW	WW	YW	Milk	TM	ACC	BW	Adj. 205	Adj. 365
	0.8	42	84	22	43		68	755	1325

Here is a very good calving ease bull. He came into the world at a nice 68 lbs. and proceeded to grow really well. He is out of one of our attractive Vision Unanimous daughters. The Princess cow family is proving to be a solid productive one here.
Recommended for heifers.



Northern View Grand Slam 98D
 Typical Visions Unanimous Daughter
 at Northern View.

Northern View BULL'S EYE 104F



Lot 5

Lot 5	2037844	FTA 104F	19/01/2018	Male					
MYTTY IN FOCUS		S A F FOCUS OF E R							
B P F SPECIAL FOCUS 504 1644193		MYTTY COUNTESS 906							
B P F BLACK CASH 341		J R SOMETHING SPECIAL							
		B P F BLACK CASH 944							
S A V HERITAGE 6295		CAR DUKE 104							
NORTHERN VIEW LUCY 74Z 1675531		S A V BLACKCAP MAY 4136							
NORTHERN VIEW LUCY 83R		NORTHERN VIEW FLYING ELIXIR70M							
		NORTHERN VIEW LUCY 72J							
EPD	BW	WW	YW	Milk	TM	ACC	BW	Adj. 205	Adj. 365
	2.1	53	106	26	53		80	819	1463

This moderate birth weight bull has great length of spine and a larger structure. He has a calving ease type of build. His mother, Lucy 74Z, has been a solid producer. The Heritage and Special Focus combination is a unique one. A maternal sister is working at Sunny Grove Angus, Radville, SK. Last year, Austin Vollman, Preeceville, SK. picked up her Blue Collar offering.
I would likely try this bull on second calvers and cautiously on heifers.

Northern View BULL'S EYE 116F



Lot 6

Lot 6	2037853	FTA 116F	22/01/2018	Male					
MYTTY IN FOCUS			S A F FOCUS OF E R						
B P F SPECIAL FOCUS 504 1644193			MYTTY COUNTESS 906						
B P F BLACK CASH 341			J R SOMETHING SPECIAL						
			B P F BLACK CASH 944						
SKYE-VIEW BEEF MAKER 5T			BOYD BEEF MAKER 3069						
NORTHERN VIEW PRINCESS 95X 1552560			SKYE-VIEW QUEEN 4M						
NORTHERN VIEW PRINCESS 74S			NORTHERN VIEW FLYING ELIXIR70M						
			WILBAR PRINCESS 345K						
EPD	BW	WW	YW	Milk	TM	ACC	BW	Adj. 205	Adj. 365
	0.6	41	82	29	50		75	833	1411

Bull's Eye 89F is a bull that checks a lot of boxes off. He is a very complete bull from his style, structure, EPDs and birth and performance numbers. He has a 75 lb. birth weight and a 0.6 birth EPD when you couple these numbers with his growth numbers you have a fantastic herd sire prospect. Not only does he have the maternal strength of Special Focus on his side but also the Princess cow family. His dam, 95X, has produced two daughters we have in our herd including an elite dam 99Z, the dam to Lot 14. This kind of cow power should equate to daughters from Bull's Eye 116F that you will want to retain in your herd. Bull's Eye 116F is the fifth bull that Princess 95X has had in the Blue Collar. If you are looking for depth, power and calving ease then 116F is the bull for you. Venture Farms in Roblin purchased last year's offering. Dale Minnihinck in Invermay owns another brother.
This bull comes recommended for use on heifers.



Northern View Tibbie 98F
 Paternal sister we sold to
 Calvin Powell, Youngstown, AB

NORTHERN VIEW ANGUS

Northern View **BULL'S EYE** 134F

Lot 7	2037868	FTA 134F	12/02/2018	Male
<p>MYTTY IN FOCUS B P F SPECIAL FOCUS 504 1644193 B P F BLACK CASH 341</p> <p>CONNEALY THUNDER NORTHERN VIEW LUCY 75D 1901442 NORTHERN VIEW LUCY 84B</p>				
<p>S A F FOCUS OF E R MYTTY COUNTESS 906 J R SOMETHING SPECIAL B P F BLACK CASH 944 BALDRIDGE KABOOM K243 KCF PARKA OF CONANGA 241 SITZ UPWARD 307R NORTHERN VIEW LUCY 79X</p>				

EPD	BW	WW	YW	Milk	TM	ACC	BW	Adj. 205	Adj. 365
-1.0	48	82	28	52			75	919	1332

This shapely Special Focus x Thunder bull has calving ease everywhere in his pedigree. With a 75 lb. birth weight and a -1.0 birth weight EPD (which is in the top 6% of the breed) you should be able to rest easy calving out heifers. The Thunder daughters have been flat awesome for us. Look for this bull to deliver easy calving and some growth to weaning and yearling.

Recommended for use on heifers.



Northern View Ruth 70Y
A typical Thunder daughter
at Northern View



Mohnen **SUBSTANTIAL** 272

Top 1% for Birth Weight, top 10% for Yearling Weight and top 10% for Weaning Weight.

Substantial has extreme calving ease numbers with exceptional growth in his calves. His unique pedigree is packed with maternal power and makes his service very flexible to which females he can be mated to. There are only 26 animals registered in Canada from Substantial. We have three bulls and a heifer from our AI to him. Each one has great shape, super weights and structurally sound and very appealing. We will be using him again for our calving ease part of our program.



Northern View **BAR DOWN** 93F

Lot 8	2037833	FTA 93F	11/01/2018	Male
<p>BENFIELD SUBSTANCE 8506 MOHNEN SUBSTANTIAL 272 1837234 MOHNEN GLYN MAWR ELBA 1758</p> <p>NORTHERN VIEW FLYING ELIXIR70M NORTHERN VIEW LUCY 83R 1259826 NORTHERN VIEW LUCY 72J</p>				
<p>H A IMAGE MAKER 0415 BENFIELD EDELLA 1105 LT TERRITORY 5824 OF EA MOHNEN GLYN MAWR ELBA 1345 ANKONIAN ELIXIR 100 CRESCENT CREEK RUTH 6F BELL STOCKADE 7G BELL BLACK LUCY 5G</p>				

EPD	BW	WW	YW	Milk	TM	ACC	BW	Adj. 205	Adj. 365
0.5	49	94	20	45			75	847	1367

This bull is out of our most senior matron on the farm, Lucy 83R. She is having her 13th calf at Northern View this spring. She has Elixir 70M in her pedigree going back to one of the most prolific females we have owned, Ruth 6F. Lucy 83R has had four females in her life and all were retained for our own use. She is the grandmother to Lot 5. Last year's maternal brother sold to Vision Valley Ranch, Cleardale, AB. There is also a maternal brother working at Corvet Angus in Melita, MB. This bull has a 75 lb. birth weight and a +0.5 birth EPD. There is some birth weight on the dam's side of pedigree.

I would consider this bull as a moderate calving ease bull to be experimented with on heifers.



Family Photo
at Agribition



Lot 9



Northern View Belle 102Y
Dam

Northern View **BAR DOWN** 121F

Lot 9	2037859	TTF 121F	01/02/2018	Male					
	BENFIELD SUBSTANCE 8506		H A IMAGE MAKER 0415						
			BENFIELD EDELLA 1105						
MOHNEN SUBSTANTIAL 272 1837234			LT TERRITORY 5824 OF EA						
	MOHNEN GLYN MAWR ELBA 1758		MOHNEN GLYN MAWR ELBA 1345						
			S A V NET WORTH 4200						
	BELL NET RETURN 3U		BELL MS PRIDE 16L						
NORTHERN VIEW BELLE 102Y 1623558			BAD LANDS AMBUSH 45M						
	WWF AMBUSH BELLE 166P		WWF ULTRAVOX BELLE 28M						
EPD	BW	WW	YW	Milk	TM	ACC	BW	Adj. 205	Adj. 365
	-0.1	45	87	15	38		70	753	1328

This is a bull from Talon's foundational female Belle 102Y. We gave each kid their first cow and we wanted to start them off right. Belle 102Y has been fantastic. She is the grandmother to Lot 12. Talon has two of her daughters and two of her great granddaughters working in his herd. They are all structurally sound with great udders and feet. Bar Down 121F is very simply one of Belle's best work. He has great numbers for growth and performance but excellent calving ease numbers with a -0.1 birth weight EPD and a 70 lb. birth weight. You will also appreciate his shape, scrotal development and eye appeal. The maternal strength in this bull will be top notch. Look at this bull for calving ease, replacement females and good weight in his steers.

Recommended for heifers.

Lot 10



Northern View **BAR DOWN** 131F

Lot 10	2037863	FTA 131F	04/02/2018	Male
--------	---------	----------	------------	------

Bar Down 131F is out of a show heifer, 87D aka Sophie. This cow has an outstanding udder, great set of feet and will get your attention as you stroll through our cow herd. If you don't find her, she will likely find you. You may be nudged or licked by her as her temperament is silly awesome. 131F's grand dam is 345T, the mother to Lot 24. We purchased 345T from the Mountain View Production Sale. We have three maternal daughters working in our herd. Bar Down 131F is made smooth, with a calving ease head but also more than ample thickness. If you are looking for calves that come out easy and females to go into your cow herd then this may be the bull for you. Note his 68 lb. birth weight and his -0.8 birth EPD. His performance to weaning and yearling weights are very respectable for a calving ease bull.

Recommended for heifers.

EPD	BW	WW	YW	Milk	TM
	-0.8	51	88	20	46
ACC	BW	Adj. 205	Adj. 365		
	68	838	1354		

BENFIELD SUBSTANCE 8506
MOHNEN SUBSTANTIAL 272 1837234
MOHNEN GLYN MAWR ELBA 1758

H A IMAGE MAKER 0415
BENFIELD EDELLA 1105
LT TERRITORY 5824 OF EA
MOHNEN GLYN MAWR ELBA 1345

S A V RESOURCE 1441
NORTHERN VIEW BEAUTY 87D 1901457
MV F BEAUTY 345T

RITO 707 OF IDEAL 3407 7075
S A V BLACKCAP MAY 4136
MV F FRONTIER 25P
B X B DORITO 14L



Northern View Beauty 87D
Dam

NORTHERN VIEW ANGUS

NORTHERN VIEW **GRAND SLAM** 80C

A Unanimous by Final Answer stylish bull we sold in 2016 to Bell Angus of Pense for \$10,750. We absolutely loved this bull and Ken was gracious enough to allow us to purchase half of 80C back and use him too. He is a calving ease bull that produces cattle that are eye appealing, thick and sound. He is a very efficient breeder. We have used him for two years now and he has produced excellent progeny for us. Last year his sons were our high selling sire group in the Blue Collar Sale. Ken used the bull early and so as a result we don't have a large number of calves in the sale from him this year. We hope to use him early this year and have many more progeny on the ground.



NORTHERN VIEW **GRAND SLAM** 99F

Lot 11

Lot 11	2037859	TTF 99F	01/02/2018	Male					
VISION UNANIMOUS 1418 NORTHERN VIEW GRAND SLAM 80C 1852032 NORTHERN VIEW LUCY 79X			VISIONTOPLINE ROYAL STOCKMAN VISION EDELLA 665 S A V FINAL ANSWER 0035 NORTHERN VIEW LUCY 85U HOOVER DAM SANDPOINT PROUD FORMERA 0128 CONNEALY THUNDER NORTHERN VIEW BELLE 102Y						
SANDPOINT J EDGAR HOOVER NORTHERN VIEW BELLE 111C 1852067 NORTHERN VIEW BELLE 75A									
EPD	BW	WW	YW	Milk	TM	ACC	BW	Adj. 205	Adj. 365
	1.6	54	100	19	46		80	872	1414

This moderate birth weight bull comes from an absolutely stunning female. 111C is a gorgeous J Edgar Hoover dam with a picture perfect udder and great feet, a true Angus female. This bull goes back to Talon's foundation cow, Belle 102Y, the dam of Lot 9. Grand Slam 99F has the build and calving numbers to work on your heifers. I love this guy's shape and thickness. We retained this guy's maternal brother to walk our heifer pasture last summer.

Recommended for heifers.



NORTHERN VIEW **GRAND SLAM** 128F

Lot 12

Lot 12	2037865	TTF 128F	04/02/2018	Male					
VISION UNANIMOUS 1418		VISIONTOPLINE ROYAL STOCKMAN							
NORTHERN VIEW GRAND SLAM 80C 1852032		VISION EDELLA 665							
NORTHERN VIEW LUCY 79X		S A V FINAL ANSWER 0035							
		NORTHERN VIEW LUCY 85U							
WILLOWVIEW PIONEER 6X		S A V PIONEER 7301							
NORTHERN VIEW BELLE 126C 1852079		WILLOWVIEW GRAND JUNE 36P							
NORTHERN VIEW BELLE 102Y		BELL NET RETURN 3U							
		WWF AMBUSH BELLE 166P							
EPD	BW	WW	YW	Milk	TM	ACC	BW	Adj. 205	Adj. 365
	3.8	42	91	13	34		90	712	1319

Here is a bull very closely related to Lot 11. He is backed by the Belle cow family. Grand Slam 128F has very solid and balanced weights and numbers. This bull is just a solid, solid bull. I love this bull's hip and quarter design. If you need a moderate bull with great maternal backing, this bull may be for you.



**Talon Showmanship
Grand Champion
2019 Regional 4-H**





SAV **CUTTING EDGE** 4857

Cutting Edge was the lead off bull at the 2015 SAV Sale. He brought an impressive \$260,000 that day. We selected Cutting Edge for his performance and growth numbers coupled with his overall mass, depth of body and muscle shape. We have a number of daughters and sons that are looking good.

Lot 13



Twila with Northern View Missie 89C
Dam

Northern View **SUPER DUTY** 77F

Lot 13	2037811	FTA 77F	07/01/2018	Male					
	SA V HARVESTOR 0338		SA V HERITAGE 6295						
SA V CUTTING EDGE 4857 1892318			SA V EMBLYNETTE 7749						
SA V BLACKCAP MAY 5530			B C C BUSHWACKER 41-93						
			SA V MAY 7238						
			MYTTY IN FOCUS						
B P F SPECIAL FOCUS 504			B P F BLACK CASH 341						
NORTHERN VIEW MISSIE 89C 1852047			REMITALL H RACHIS 21R						
NORTHERN VIEW MISSIE 81X			NORTHERN VIEW MISSIE 84M						
EPD	BW	WW	YW	Milk	TM	ACC	BW	Adj. 205	Adj. 365
	-0.2	58	103	22	51		72	797	1385

Super Duty 77F is a shapely, hairy and genetically interesting bull. He combines the growth of Cutting Edge and the maternal and calving ease strength to Special Focus. He has a very usable 72 lb. birth weight and a -0.2 birth weight EPD combined with very solid weaning and yearling weights with a 3.67 lbs. per day weight gain. Missie 89C is affectionately known as Rosie and is as quiet a cow as they come. She has proven to be a great producing female. Super Duty is a multipurpose bull with calving ease, performance to produce growthy calves and produce solid replacement cattle.

Recommended for heifers.

Northern View **SUPER DUTY** 89F

Lot 14	2037824	FTA 89F	09/01/2018	Male
--------	---------	---------	------------	------

Well you may want to get a snack, a refreshment and use the washroom before starting to read up on this guy. I will be tooting his horn a bit. Super Duty 89F is a super quiet bull affectionately known as Neil. He has a tremendous hair coat, super deep body, solid top, great structure, ample scrotal development and tonnes of eye appeal. We were admiring him in the pen the other day and Amy says, "Holy moly that maybe the deepest bull we have ever had." Super Duty 89F has the power and performance of Cutting Edge and the maternal awesomeness of the Princess/Thunder. The Thunder daughters at our place have been just outstanding. Each one looks like an Angus cow with great feet and udder. Most importantly they raise a quality calf year in and year out. 99Z has been a perennial producer of top quality progeny. After her fourth calf, she was declared an elite dam by the Canadian Angus Association with an average index of 110. Her first calf, a Scheifelbein Effective daughter, was sold through the Masterpiece to Lock Farms. This female has done very well for Jon. 99Z's next three bull calves have all been sold for breeding stock with last year's calf being our Blue Collar high seller going to Homestead Angus, Youngstown, AB. This spring Princess 99Z dropped a Resistol heifer calf. Since we have no

daughters in our herd from this awesome elite female it is safe to say this girl will not be leaving the farm. Princess 99Z has great fertility settling each year on the first breeding. 89F has performance numbers that put his weaning weight in the top 5%, yearling weight in the top 10%, milk in the top 4% and total maternal in the top 1% of the breed. These numbers are supported by Neil's weights, performance and the history within his pedigree. He had a 3.91 lb. per day gain from weaning to yearling. The bone and leg under this bull are fantastic. If you are looking for a high performing bull from a cow that is flat outstanding, that will produce high performing bulls/steers and replacement females, here is one to take a good long look at.



Northern View
Magnate 110D
Maternal
Brother

SA V HARVESTOR 0338
SA V CUTTING EDGE 4857 1892318
SA V BLACKCAP MAY 5530

CONNEALY THUNDER
NORTHERN VIEW PRINCESS 99Z 1675547
NORTHERN VIEW PRINCESS 95X

SA V HERITAGE 6295
SA V EMBLYNETTE 7749
B C C BUSHWACKER 41-93
SA V MAY 7238
BALDRIDGE KABOOM K243 KCF
PARKA OF CONANGA 241
SKYE-VIEW BEEF MAKER 5T
NORTHERN VIEW PRINCESS 74S

EPD	BW	WW	YW	Milk	TM	ACC	BW	Adj. 205	Adj. 365
	3.6	66	115	28	61		85	858	1484

NORTHERN VIEW ANGUS

Northern View **SUPER DUTY** 120F

Lot 15

Lot 15	2037858	FTA 120F	01/02/2018	Male
<p>S A V HERITAGE 6295 S A V EMBLYNETTE 7749 B C C BUSHWACKER 41-93 S A V MAY 7238 A A R WINDY RIDGE 362 A A R LADY KELTON 2170 SANDY BAR INNOVATOR 5M CRESCENT CREEK RUTH 6F</p>				
<p>S A V HARVESTOR 0338 S A V CUTTING EDGE 4857 1892318 S A V BLACKCAP MAY 5530</p>				
<p>A A R REALLY WINDY 1205 NORTHERN VIEW RUTH 81S 1320010 NORTHERN VIEW RUTH 85P</p>				

EPD	BW	WW	YW	Milk	TM	ACC	BW	Adj. 205	Adj. 365
4.9	56	98	26	54		95	931	1447	

Looking for a high performing cow bull? Super Duty 120F is just the bull for you. He is a fury, deep, deep sided bull that has oodles of bones to carry his big frame around. This bull is a masculine, mature herd bull that is backed by the Ruth cow family. The Ruths have been fantastic for us. Each one milks well, walks well and performs well. They have a high level of fertility. Super Duty 120F has performed very well in our pasture and pen. Ruth 81S has progeny working at numerous breeders as a result of sales in the Blue Collar Bull Sale. Last year's offering sold to Dale Minnhinick of Invermay.



Northern View Ruth 81S
Dam



S A V **THRIVE** 5054

On our semen hunt a couple years ago we were looking for a bull with mass, power, phenotype, great maternal qualities and a proven pedigree but one that is unique to our breeding program. We selected Thrive. Thrive is reported to have excellent muscular expression and is very deep and long sided. The scrotal numbers of Thrive are excellent. Thrive also has lighter birth weight numbers. Thrive is in the top 1% of the breed for weaning and yearling weights and in the top 2% of the breed for maternal and scrotal development. The bulls and heifers we have from this young sire seem to really meet with the billing that was laid out for Thrive's calves. Sadly this awesome sire was killed in a lightning strike so his progeny are few and far between with only 90 registered in Canada.



Northern View **HAMMER DOWN** 94F

Lot 16

Lot 16	2037834	FTA 94F	12/01/2018	Male
<p>S A V RENOWN 3439 S A V THRIVE 5054 1943196 S A V ERICA 9448</p>				
<p>B P F SPECIAL FOCUS 504 NORTHERN VIEW DUCHESS 85C 1852043 NORTHERN VIEW DUCHESS 84A</p>				
<p>RITO 707 OF IDEAL 3407 7075 S A V BLACKCAP MAY 4136 S A V BISMARCK 5682 S A V ERICA 4419 MYTTY IN FOCUS B P F BLACK CASH 341 WILL ROLE MODEL SOO LINE DUCHESS 7266</p>				

EPD	BW	WW	YW	Milk	TM	ACC	BW	Adj. 205	Adj. 365
2.7	63	104	24	56		85	915	1405	

Here we have a high performing, moderate birth weight bull that gained 3.06 lbs. per day to weaning. He has solid numbers with his weaning weight in the top 10%, yearling weight in the top 15% and total maternal is in the top 5%. The maternal piece is not a surprise with his pedigree. The bottom side has the female maker, Special Focus. Hammer Down 94F is backed by the Duchess cow family. His great grand dam, 266T, has been a real progeny powerhouse for us. Soo Line Duchess 266T is the dam of Lot 25. Look to this bull to produce moderate birth weight, easy doing, quiet and very marketable cattle.



Northern View Duchess 85C
Dam



Lot 17



Northern View **HAMMER DOWN** 96F

Lot 17 2037835 FTA 96F 12/01/2018 Male

A word which best describes this bull is balance. This bull does not have extremes in any direction in his numbers, his style, his shape, his weights. There is only one way I would use the word extreme when talking about Hammer Down 96F and that is to say he is extremely good. He is a hairy, good footed, structurally sound bull that has good scrotal development. 96F has a great Angus head and is very attractive, yet masculine. His dam, Laura 113Z, is a good footed and beautifully uddered Pioneer 6X daughter. She has had four calves go through the Blue Collar. Last year's offering went to Jordan Baumung, MacNutt, SK. Hammer Down 96F is a real attractive beef bull that also has done well in the show ring. He was First in Class and then the Reserve Champion Bull Calf at the National Angus Show in Brandon this past fall. He is also a member of our 2018 Champion Pen of Bulls at the Harvest Showdown in Yorkton last fall. This bull is quiet and halter broke. If you are looking for a real herd bull, take time to analyze this guy.

EPD	BW	WW	YW	Milk	TM
	2.9	61	100	20	51

ACC	BW	Adj. 205	Adj. 365
	85	846	1448

S A V RENOWN 3439
S A V THRIVE 5054 1943196
S A V ERICA 9448

RITO 707 OF IDEAL 3407 7075
S A V BLACKCAP MAY 4136
S A V BISMARK 5682
S A V ERICA 4419

WILLOWVIEW PIONEER 6X
NORTHERN VIEW LAURA 113Z 1675563
CRESCENT CREEK LAURA 10U

S A V PIONEER 7301
WILLOWVIEW GRAND JUNE 36P
MINBURN MAIN EVENT 82R
RON'S LAURA 16F



Northern View
Hammer Down 96F
Reserve Champion
Bull Calf at the 2018
Manitoba Ag Ex



FTA 78F, FTA 96F
and FTA 101F
Harvest Showdown
Grand Champion
Pen of Bulls
Amy and Jared Glasman

Northern View **HAMMER DOWN** 101F

Lot 18 2037841 FTA 101F 17/01/2018 Male

"This is the best bull I have seen at your place." said an astute cattle person at our place in October. I believe the momentum this bull had created to that point has continued. One is always critical of their own stock and while it is great to receive comments like this, we all admire and appreciate bulls for different reasons. Personally, I really appreciate the muscle and shape in this yearling. He is ruggedly smooth, a thick tanky bull that seems to mirror the picture of Thrive himself. He has a very usable 1.1 birth EPD and weight at 78 lbs. Hammer Down 101F's EPDs have his weaning in the top 3% while his yearling weight, maternal and scrotal traits all fall in the top 10% of the breed. This bull has gained well to his impressive weaning and yearling weights. This bull has very good toes and feet under him as well as a well endowed tool box under him. 101F's dam is a beautifully uddered and structurally sound female we purchased as a bred from J and S Angus. This bull was a member of our 2018 Grand Champion Pen of Bulls at Harvest Showdown in Yorkton. He is halter broke and very manageable. Nice calving weight numbers.

EPD	BW	WW	YW	Milk	TM
	1.1	67	106	21	55

ACC	BW	Adj. 205	Adj. 365
	78	934	1475

S A V RENOWN 3439
S A V THRIVE 5054 1943196
S A V ERICA 9448

RITO 707 OF IDEAL 3407 7075
S A V BLACKCAP MAY 4136
S A V BISMARK 5682
S A V ERICA 4419

HF KODIAK 5R
JS PRIMROSE 125 1662172
S A V PRIMROSE 0074

SANDY BAR ADVANTAGE 43M
WILBAR RUBY 955N
B/R NEW DESIGN 036
S A V PRIMROSE 8244

Lot 18



NORTHERN VIEW ANGUS

Northern View **HAMMER DOWN** 105F

Lot 19

Lot 19	2037845	FTA 105F	19/01/2018	Male
<p>S A V RENOWN 3439 S A V THRIVE 5054 1943196 S A V ERICA 9448</p> <p>TC ABERDEEN 759 NORTHERN VIEW LUCY 87X 1552552 NORTHERN VIEW LUCY 72J</p>				
<p>RITO 707 OF IDEAL 3407 7075 S A V BLACKCAP MAY 4136 S A V BISMARK 5682 S A V ERICA 4419 C R A BEXTOR 872 5205 608 TC BLACKBIRD 4034 BELL STOCKADE 7G BELL BLACK LUCY 5G</p>				

EPD	BW	WW	YW	Milk	TM	ACC	BW	Adj. 205	Adj. 365
1.2	64	109	17	49			75	912	1396

If you want a bull from a sire with a proven pedigree and an awesome foundational cow then here is your opportunity. When you breed a great sire and a gorgeous cow you should get something pretty darn nice. Hammer Down 105F is a pretty darn nice bull. His mother is a deep, attractive and structurally sound female. We have 2 daughters in our herd. Lucy 87X's first calf sold to Spilchuk Farms. They have had numerous daughters from him in their herd and as very pleased with this bull's heifers and steers. His daughters are producing very well for them. Spilchuk's were able to get 5 calf crops of this bull. That is quite sound longevity. This is a cow that we are proud to show anyone who comes by the farm. 105F has a 75lb birth weight and very manageable 1.2 birth weight EPD. Add in the very very nice weaning and birth weights and you have an pretty desirable bull. This bull is halter broke and has great disposition. Lucy 87X's last years Blue Collar offering sold to Ross Dublinica-Spruce Acres Angus, Foam Lake.



Northern View Lucy 87X
Dam



Northern View **HAMMER DOWN** 119F

Lot 20

Lot 20	2037856	FTA 119F	25/01/2018	Male
<p>S A V RENOWN 3439 S A V THRIVE 5054 1943196 S A V ERICA 9448</p> <p>VISION UNANIMOUS 1418 NORTHERN VIEW LUCY 71C 1852033 NORTHERN VIEW LUCY 86U</p>				
<p>RITO 707 OF IDEAL 3407 7075 S A V BLACKCAP MAY 4136 S A V BISMARK 5682 S A V ERICA 4419 VISIONTOPLINE ROYAL STOCKMAN VISION EDELLA 665 NORTHERN VIEW QUANTUM 86P NORTHERN VIEW LUCY 83R</p>				

EPD	BW	WW	YW	Milk	TM	ACC	BW	Adj. 205	Adj. 365
0.2	56	96	18	46			68	780	1273

Here is a bull that is moderate and balanced in every way from his conformation to his numerical data. He has a 0.2 birth EPD and a 68 lb. birth weight which puts him in the top 8% of the breed. Hammer Down 119F is from a stunning Vision Unanimous daughter. She is virtually a carbon copy of 119F's grand dam Lucy pictured here too. This bull is as smooth as they come. 119F should be one that will work on heifers based on his make up and numbers.

Recommended for heifers.



Northern View Lucy 86U
Grand Dam



Talon as Grand Champion Showman
at Regional 4-H last July with
Richard Krupski, breeder
of the steer.





Boyd **CARTWRIGHT** 3303

We selected Cartwright to AI calves because he is quite royally bred. He has very good eye appeal, tremendous depth of body and is in the top 1% of the Angus breed for weaning weight, yearling weight and scrotal development. There are only 16 of his progeny registered in Canada so the matings here are quite unique and interesting for any cattle producer.

Lot 21



Northern View **BONANZA** 78F

Lot 21 2037817 FTA 78F 08/01/2018 Male

Bonanza 78F is a deep and powerful bull that has a ton of style. If you are looking to put more middle into your cows and calves this is the bull for you. 78F has excellent disposition and was a member of our show string. He placed second in class at the National show in Brandon last fall to our Reserve Champion Bull Calf, Lot 17. The reviews on this bull at Brandon were quite flattering. 78F has a very nice set of numbers when it comes to performance with his weaning and yearling weights registering in the top 1% of the breed and his birth weight is very usable for most breeding programs. He comes from an excellent cow family. His mother, 72A is a deep, big volume female that is structurally very sound. Bonanza 78F's grand dam, 88X, has just been designated an elite dam by the Canadian Angus Association. Excellent opportunity to own a bull that has the genes to sire fantastic replacement females. 88X has produced a Coneally Consensus son, 108D, which we own with Venture Farms in Roblin. His calves are looking awesome. Bonanza 78F was also a member of our 2018 Grand Champion Pen of Bulls at Harvest Showdown in Yorkton. He is halter broke. Very nice calving ease numbers on this bull.

EPD	BW	WW	YW	Milk	TM
	1.7	66	121	26	59

ACC	BW	Adj. 205	Adj. 365
	80	874	1454

CONNELLY CAPITALIST 028
BOYD CARTWRIGHT 3303 1823025
S A V ABIGALE 8076

S A V FINAL ANSWER 0035
PRIDES PITA OF CONANGA 8821
S A V BISMARCK 5682
S A V ABIGALE 6575

NORTHERN VIEW UPWARD 93Y
NORTHERN VIEW ATALANTA 72A 1744120
NORTHERN VIEW ATALANTA 88X

SITZ UPWARD 307R
SOO LINE DUCHESS 7266
BELL NET RETURN 3U
NORTHERN VIEW ATALANTA 78T



Northern View
Bonanza 78F
at the 2018
Manitoba Ag Ex



Northern View
Atalanta 72A
Dam

Lot 22



Northern View **BONANZA** 79F

Lot 22 2037831 FTA 79F 11/01/2018 Male

CONNELLY CAPITALIST 028
BOYD CARTWRIGHT 3303 1823025
S A V ABIGALE 8076

NORTHERN VIEW NET WORTH 104Y
NORTHERN VIEW JESTRESS 116B 1795891
NORTHERN VIEW JESTRESS 100Y

S A V FINAL ANSWER 0035
PRIDES PITA OF CONANGA 8821
S A V BISMARCK 5682
S A V ABIGALE 6575
BELL NET RETURN 3U
NORTHERN VIEW TIBBIE 71R
BELL NET RETURN 3U
NORTHERN VIEW JESTRESS 74K

EPD	BW	WW	YW	Milk	TM	ACC	BW	Adj. 205	Adj. 365
	3.7	61	113	21	52		88	868	1487

Another deep, big volume Cartwright son from Alexis' cow. Bonanza 79F is a very impressive specimen in every way from how his papers read, his performance numbers, his presence and his maternal qualities. He has gained and grown very well. His dam, 116B aka Nellie, was our show heifer as a bred. She is chisel fronted, good footed and good uddered. Last year she had a very good Grand Slam 80C in our sale. Many many cattle producers found him but Chris Schwartz of Runnymede, SK, managed to snag him at last year's Blue Collar. Bonanza 79F will be a bull you will want to seek out if you are looking for depth and performance in your steer/bull calves and also for awesome replacement females.



Northern View Jestress 116B
Dam

NORTHERN VIEW ANGUS

Northern View **BONANZA** 117F

Lot 23



Lot 23	2037855	AJF 117F	22/01/2018	Male
<p>CONNEALY CAPITALIST 028 BOYD CARTWRIGHT 3303 1823025 S A V ABIGALE 8076</p> <p>NORTHERN VIEW NET WORTH 104Y NORTHERN VIEW ROSEBUD 83B 1804679 PRAIRIELANE 8127 ROSEBUD 1035</p>				
<p>S A V FINAL ANSWER 0035 PRIDES PITA OF CONANGA 8821 S A V BISMARCK 5682 S A V ABIGALE 6575 BELL NET RETURN 3U NORTHERN VIEW TIBBIE 71R PRAIRIELANE 5057-8127 PRAIRIELANE 3011 ROSEBUD 8028</p>				

EPD	BW	WW	YW	Milk	TM	ACC	BW	Adj. 205	Adj. 365
2.9	57	110	22	51	ACC	88	799	1355	

Alexis is presenting another very good Cartwright son to you. I feel like I am repeating myself with these Cartwright calves but this guy is also deep and powerful. The genetics are very similar in Lot 21 and 22, so the results should also be similar. A maternal daughter sold as a bred to MarMac Angus at the Keystone Sale in Brandon last December.

MAR **INNOVATION** 251



Innovation was selected for his thickness and style. He is known to be very docile with great feet and legs. This bull is quite complete and has tremendous performance to him. We really like the bulls and heifers he has sired at our place. He is a bull we will use again this spring. We sold a flat out awesome paternal daughter as the high selling heifer calf at the Keystone Sale in Brandon last December to Freitag-Perrot Cattle Company.

Northern View **MYSTIC** 95F

Lot 24



Lot 24	2037837	FTA 95F	12/01/2018	Male
<p>CONNEALY REFLECTION PEARL PAMMY OF CONANGA 194 S A V FINAL ANSWER 0035 MAR KAHUNA PRECISION 328 674 B/R NEW FRONTIER 095 MVF FAVORITE 58L DRYLAND RITO -953- FREYBURN BEAUTY 50J</p>				
<p>CONNEALY IMPRESSION MAR INNOVATION 251 1820771 MAR FINAL KAHUNA 856</p> <p>MVF FRONTIER 25P MVF BEAUTY 345T 1424893 BXB DORITO 14L</p>				

EPD	BW	WW	YW	Milk	TM	ACC	BW	Adj. 205	Adj. 365
1.8	48	77	24	48	ACC	80	802	1312	

Mystic 95F comes from a dam that has been awesome for us. She has three daughters working in our herd. Each one is awesome. One is the dam to Lot 10, a stunning young cow. Mystic 95F is a nicely shaped moderately made bull that has a middle of the road birth EPD and weight that **could work on some heifers**. I would try him on second calvers and cows before giving him free reign on the heifer pasture though.

Northern View Zara Lisa 88F
 Paternal sister to Lots 24 and 25
 we sold at the Keystone Klassic Sale



Alexis and KJ1
 with Ken Bell, Bell Angus,
 breeder of the steer.



Lot 25



CONNEALY IMPRESSION
MAR INNOVATION 251 1820771
MAR FINAL KAHUNA 856

CONNEALY REFLECTION
PEARL PAMMY OF CONANGA 194
S A V FINAL ANSWER 0035
MAR KAHUNA PRECISION 328 674

CUDLOBE YELLOWSTONE 80M
SOO LINE DUCHESS 7266 1376757
SANDY BAR DUCHESS 96J

Northern View **MYSTIC** 132F

Lot 25 2037866 FTA 132F 06/02/2018 Male

Power, performance and style are words best to describe this rascal. He is just flat impressive. This February bull is the highest gaining and indexing bull in our offering gaining 4.09 lbs. per day. He gets more and more impressive each day in his growth and mass. Duchess 266T has been a great cow for us. She has a full sister at her side right now and she appears to be following the foot steps of her brother. 266T has been a perennial breeding stock producer. A maternal brother sold as our high selling bull in the 2017 Blue Collar to Charlie and Treana Porter of Kinistino, SK. Look to Mystic 132F to add performance, pounds and depth to his progeny.

EPD	BW	WW	YW	Milk	TM
	6.2	61	116	21	52

ACC	BW	Adj. 205	Adj. 365
	92	879	1533



Compass 103D
Maternal Brother
sold to Porters



Mohnen **SOUTH DAKOTA** 402

We used South Dakota as a performance sire. He has tremendous width and length of spine. The depth of quarter and body are qualities admired in South Dakota. He is in the top 5% of the breed in weaning weight, yearling weight and total maternal qualities. A bull with an excellent temperament. The bulls and heifers we have exhibit the qualities we were hoping for by using South Dakota.

Lot 26



Northern View Acheiver 106E
Paternal Brother sold to
Dale Minnihinick last year at the
Blue Collar Bull Sale

Northern View **ACHEIVER** 126F

Lot 26 2055085 FTA 126F 03/02/2018 Male

MOHNEN DENSITY 730
MOHNEN SOUTH DAKOTA 402 1727672
MOHNEN JILT 539

COLE CREEK BLACK CEDAR 46P
BLACK CREEK BLACKCAP 415B 1786788
EASTONDALE BLACKCAP 82'12

S A V 004 DENSITY 4336
MOHNEN JILT 910
TC ABERDEEN 759
MOHNEN JILT 787
C H QUANTUM 6247
COLE CREEK CLOVA JUANADA 67
MINBURN MAIN EVENT 40W
EASTONDALE BLACKCAP 55'09

EPD	BW	WW	YW	Milk	TM	ACC	BW	Adj. 205	Adj. 365
	0.5	45	80	22	45		70	789	1314

Well here is a calving ease deal out of Alexis' 415B cow. We really appreciate this cow for her volume, mass and her structure. Her udder is very square and level with a very nice teet length. This bull is well put together with very nice weaning and yearling weights and a 3.28 average daily gain. I really like the hip, quarter and conformation on this calf. He is smooth and angular through his shoulders and girth area. Take note of his 70 lb. birth weight and 0.5 birth EPD.

Recommended for heifers.

Lot 27



Parkwood **SENSATION** 7F

Lot 27	2037943	WHBS 7F	03/01/2018	Male					
S A V REGISTRY 2831			RITO 707 OF IDEAL 3407 7075						
S A V SENSATION 5615 1943126			S A V MADAME PRIDE 0075						
S A V BLACKCAP MAY 4136			S A V 8180 TRAVELER 004						
			S A V MAY 2397						
IDEAL 4355 OF 0T26 2440			S S OBJECTIVE T510 OT26						
PARKWOOD EPPONIA 14Y 1641300			IDEAL 2440 OF 7407 7275						
EPPONIA OF PARKWOOD 29M			CRESCENT CREEK LEGEND 148G						
			EPPONIA OF PARKWOOD 1G						
EPD	BW	WW	YW	Milk	TM	ACC	BW	WW	Adj. YW
	2.6	57	101	23	52		85	958	1335

This individual simply stands out with his abundance of frame, and capacity with a tremendously easy going disposition. 7F's dam has been designated elite with a son selling in a previous sale to Rod Wagner.



S A V **SENSATION** 5615

Parkwood **SENSATION** 3F

Lot 28	2037942	WHBS 3F	02/01/2018	Male					
S A V REGISTRY 2831			RITO 707 OF IDEAL 3407 7075						
S A V SENSATION 5615 1943126			S A V MADAME PRIDE 0075						
S A V BLACKCAP MAY 4136			S A V 8180 TRAVELER 004						
			S A V MAY 2397						
SITZ UPWARD 307R			CONNEALY ONWARD						
PARKWOOD TIBBIE 6Z 1705178			SITZ HENRIETTA PRIDE 81M						
MVF TIBBIE 813P			GDAR SVF TRAVELER 234D						
			MVF TIBBIE 52F						
EPD	BW	WW	YW	Milk	TM	ACC	BW	WW	Adj. YW
	1.2	56	108	26	54		78	922	1392

3F is a flat out powerhouse bull and exhibits as much length, capacity and muscle as any bull. 6Z is a strong made, correct female with excellent foot and leg structure.

Lot 28



Lot 29



Parkwood **SENSATION** 8F

Lot 29	2037492	BJA 8F	03/01/2018	Male					
S A V REGISTRY 2831		RITO 707 OF IDEAL 3407 7075							
S A V SENSATION 5615 1943126		S A V MADAME PRIDE 0075							
S A V BLACKCAP MAY 4136		S A V 8180 TRAVELER 004							
MVF UPWARD 236X		S A V MAY 2397							
PARKWOOD RUBY 117A 1735916		SITZ UPWARD 307R							
BLACK RIDGE RUBY 86N		MVF ELLEN 112S							
		B S S LIMITED DESIGN							
		BLACK RIDGE RUBY 86J							
EPD	BW	WW	YW	Milk	TM	ACC	BW	WW	Adj. YW
	3.3	59	106	22	52		87	950	1365

Sensation is known for siring cattle that are smooth and correct in pattern with ample muscle expression and shape and 8F demonstrates these qualities.

Lot 30



Parkwood **SENSATION** 13F

Lot 30	2037945	WHBS 13F	06/01/2018	Male					
S A V REGISTRY 2831			RITO 707 OF IDEAL 3407 7075						
S A V SENSATION 5615 1943126			S A V MADAME PRIDE 0075						
S A V BLACKCAP MAY 4136			S A V 8180 TRAVELER 004						
MVF VRD DATELINE 5M			S A V MAY 2397						
PARKWOOD PROUD LASSIE 49W 1505487			VERMILION DATELINE 7078						
OTA SCHROEDER 132L			MVF LADY ANNE 30F						
			V A F HAPPY OSCAR 57						
			SCHROEDER PROUD LASSIE						
EPD	BW	WW	YW	Milk	TM	ACC	BW	WW	Adj. YW
	3.7	62	111	22	53		90	908	1459

13F is one of the deepest sided Sensation sons of the group with loads of muscle and body mass that makes him simply stand out. With a yearling weight of 1459 lbs. he flat out gets it done. His 49W dam has sold sons in previous sales to Gary Speight, Brad Knutson and Len Malinowski.

Lot 31



68F is moderate sized, thick made, deep sided and one of the top bulls of the group. He is a popular choice for maintaining low birth weight without giving up performance. This International first calf heifer has done a heck of a job raising her first calf.

Parkwood **SENSATION** 68F

Lot 31	2037909	WHBA 68F	16/01/2018	Male	EPD	4.7	67	127	23	57	ACC	87	866	1467
S A V REGISTRY 2831					S A V INTERNATIONAL 2020					S A V HARVESTOR 0338				
S A V SENSATION 5615 1943126					PARKWOOD TIBBIE 47D 1946421					S A V EMBLYNETTE 5483				
S A V BLACKCAP MAY 4136					MVF TIBBIE 25X					SITZ UPWARD 307R				
RITO 707 OF IDEAL 3407 7075										MVF TIBBIE 22P				
S A V MADAME PRIDE 0075														
S A V 8180 TRAVELER 004														
S A V MAY 2397														

Parkwood **EASY DECISION** 46F

Lot 32	2037902	WHBA 46F	08/01/2018	Male
VIN-MAR O'REILLY FACTOR BUSHES EASY DECISION 98 1786857 BUSHES BIG BLACKBIRD 7885 REMINGTON COPENHAGEN 137R PARKWOOD ALICIA 31U 1445255 PARKWOOD ALICIA 31L S A V FINAL ANSWER 0035 VIN-MAR EDELLA 2827 BUSHES BIG TIME 452 BUSHES DAKOTA BLACKBIRD 4763 SCA 3299 OF IDEAL 1418 ISLA BANK PRIDE 40M BROOKMORE SUCCEED 117F ALICIA WIN OF PARKWOOD 10G				

EPD	BW	WW	YW	Milk	TM	ACC	BW	WW	Adj. YW
	4.0	62	116	22	53		94	972	1336

Easy Decision is known for siring high performance calves with moderate frames and exceptional EPDs. 46F is loaded with meat and muscle from front to back.



Bushes **EASY DECISION** 98



Parkwood **EASY DECISION** 47F

Lot 33	2037498	BJA 47F	09/01/2018	Male
VIN-MAR O'REILLY FACTOR BUSHES EASY DECISION 98 1786857 BUSHES BIG BLACKBIRD 7885 CRESCENT CREEK TOMBOY 15W CRESCENT CREEK LADY BATE 41Z 1665247 CRESCENT CREEK LADY BATE 117T S A V FINAL ANSWER 0035 VIN-MAR EDELLA 2827 BUSHES BIG TIME 452 BUSHES DAKOTA BLACKBIRD 4763 LOOKOUT HUCK 53T CRESCENT CREEK ROSEBUD 6R CAR IDEAL 061 CRESCENT CREEK LADY BATE 50F				

EPD	BW	WW	YW	Milk	TM	ACC	BW	WW	Adj. YW
	4.1	65	119	22	55		91	948	1326

47F has power, stature and thickness that is in high demand in the cattle business. His dam is a feminine, heavy milking cow raising another herd bull prospect.



37F is deep sided and big hipped with lots of hair. 75A has tremendous body capacity and has passed it on to this son. A maternal brother sold to Brent Cursons at a previous sale.



KR **CASH FLOW**

Lot 34



Parkwood **CASHFLOW** 37F

Lot 34	2037494	BJA 37F	06/01/2018	Male
BARSTOW CASH KR CASH FLOW 1788448 WK LASS 1591 SITZ DASH 10277 BARSTOW QUEEN W16 WK RETURN VERMILION LASS 0029				

EPD	BW	WW	YW	Milk	TM	ACC	BW	WW	Adj. YW
	2.9	60	104	21	51		86	914	1268

HF KODIAK 123Y
PARKWOOD BLACKBIRD 75A 1735911
 PARKWOOD BLACKBIRD 92Y

HF KODIAK 5R
 ZHR TIBBIE 30R
 SITZ UPWARD 307R
 MVF BLACKBIRD 346R

Lot 35



Parkwood **CUTTING EDGE** 23F

Lot 35	2037891	WHBA 23F	07/01/2018	Male
S A V HARVESTOR 0338 S A V CUTTING EDGE 4857 1892318 S A V BLACKCAP MAY 5530 SITZ UPWARD 307R PARKWOOD TIBBIE 11Z 1705180 MVF TIBBIE 813P				
S A V HERITAGE 6295 S A V EMBLYNETTE 7749 B C C BUSHWACKER 41-93 S A V MAY 7238 CONNEALY ONWARD SITZ HENRIETTA PRIDE 81M GDAR SVF TRAVELER 234D MVF TIBBIE 52F				

EPD	BW	WW	YW	Milk	TM	ACC	BW	WW	Adj. YW
	4.0	54	94	27	54		88	874	1232

23F is a thick, wide topped bull that walks out on a good set of feet and legs and has loads of performance and style. 11Z is a highly productive dam with a beautiful udder. A maternal brother was sold to Zuchkan Land and Livestock as well as a heifer to Thad Trefiak in previous sales.

S A V **CUTTING EDGE** 4857

Lot 36



Parkwood **BRUISER** 51F

Lot 36	2037904	WHBA 51F	10/01/2018	Male
S A V BISMARCK 5682 S A V BRUISER 9164 1653762 S A V MISS BOBBIE 7463 MVF UPWARD 236X PARKWOOD HEATHER JOY 147B 1792463 PARKWOOD HEATHER JOY 89U				
G A R GRID MAKER S A V ABIGALE 0451 S A V 004 PREDOMINANT 4438 S A V MISS BOBBIE 4177 SITZ UPWARD 307R MVF ELLEN 1125 BLACKTOF T BANDOLIER 5M PARKWOOD HEATHER JOY 77N				

EPD	BW	WW	YW	Milk	TM	ACC	BW	WW	Adj. YW
	2.4	55	96	19	47		94	892	1255

Bruiser is proving you can breed thick, muscular, efficient and easy fleshing cattle. His dam is a moderately framed cow with snug udder and good feet.

S A V **BRUISER** 9164

Lot 37



Parkwood **DOUBLE VISION** 9F

Lot 37	2037881	WHBA 9F	03/01/2018	Male
CONNEALY REFLECTION JINDRA DOUBLE VISION 1764385 HOFF RACHEL 8312 405 JL AMMO 2082 PARKWOOD QUEEN 45B 1792423 PRETTY VIEW QUEEN 254T				
BON VIEW NEW DESIGN 878 HAPPY GRILL OF CONANGA 6260 HOFF LIMITED EDITION SC 594 HOFF MISS EXPO S C 4223 S A V BULLET 0473 JL RALLEY MISSIE 8202 HAPPYVALE BANDO 35P PRETTY VIEW QUEEN 54H				

EPD	BW	WW	YW	Milk	TM	ACC	BW	WW	Adj. YW
	0.9	45	85	20	43		76	770	1185

9F is a calving ease bull with extra growth and performance that will work well on cows and heifers.

Jindra **DOUBLE VISION**

Parkwood **DOUBLE VISION** 24F

Lot 38	2037892	WHBA 24F	07/01/2018	Male
CONNEALY REFLECTION JINDRA DOUBLE VISION 1764385 HOFF RACHEL 8312 405 JL YOUNG PRO 9003 PARKWOOD QUEEN 33Y 1620015 PARKWOOD QUEEN 5W				
BON VIEW NEW DESIGN 878 HAPPY GRILL OF CONANGA 6260 HOFF LIMITED EDITION SC 594 HOFF MISS EXPO S C 4223 S A V YOUNG JOCK 6457 JL LADY 07043 S A V FINAL ANSWER 0035 PARKWOOD QUEEN 16S				

EPD	BW	WW	YW	Milk	TM	ACC	BW	WW	Adj. YW
	1.0	47	84	24	48		83	820	1184

24F is a low birth weight bull with a very correct and thick top and quarter.



Parkwood **INTERNATIONAL** 33F

Lot 39	2037947	WHBS 33F	07/01/2018	Male
S A V HARVESTOR 0338 S A V INTERNATIONAL 2020 1724665 S A V EMBLYNETTE 5483 CRESCENT CREEK SUPER X 91S PARKWOOD MISS HAPPY 34Z 1681004 PARKWOOD MISS HAPPY 22W				
S A V HERITAGE 629S S A V EMBLYNETTE 7749 S A V 8180 TRAVELER 004 S A V EMBLYNETTE 7260 DWAJO SUPER X 104N CRESCENT CREEK ROSEBUD 97P REMINGTON COPENHAGEN 137R OTA MISS HAPPY 75N				

EPD	BW	WW	YW	Milk	TM	ACC	BW	WW	Adj. YW
	4.5	53	93	12	39		89	820	1193

This International son continues to gain mass and muscle as he matures. 34Z is hands down the most docile cow in our herd and has loads of femininity and muscle.



S A V **INTERNATIONAL** 2020



Parkwood **BANK NOTE** 67F

Lot 40	2038731	WHBA 67F	15/01/2018	Male
CONNEALY EARNAN 076E BROOKING BANK NOTE 4040 1776488 E A ROSE 918 MOGCK BULLSEYE HBH ERICETTE 39D 1913012 BROOKMORE ERICETTE 124Z				
CONNEALY CONSENSUS BRAZILA OF CONANGA 3991 839A S A V FINAL ANSWER 0035 E A ROSE 738 MOGCK SURE SHOT MOGCK MARY 1255 SITZ UPWARD 307R BROOKMORE ERICETTE 135M				

EPD	BW	WW	YW	Milk	TM	ACC	BW	WW	Adj. YW
	3.3	64	102	22	54		82	838	1230

A light birth weight bull out of a first calf heifer with thickness, expressive muscle, and balance. 67A was purchased in dam from HBH.



Lot 41



Parkwood **TIGER** 73F

Lot 41	2037912	WHBA 73F	17/01/2018	Male					
HF TIGER 5T		HF KODIAK 5R							
PARKWOOD TIGER 5A 1764922		HF ECHO 84R							
MVF ELLEN 634T		CONNEALY FREIGHTLINER							
		MVF ELLEN 26N							
S A V LEWIS 8373		S A V 8180 TRAVELER 004							
PARKWOOD HEATHER JOY 125X 1562073		S A V BESSIE HEIRESS 1184							
HEATHER JOY OF PARKWOOD 17H		G T MAXIMUM							
		HEATHER JOY OF PARKWOOD 77D							
EPD	BW	WW	YW	Milk	TM	ACC	BW	WW	Adj. YW
	4.2	47	87	20	44		98	936	1313

Moderately framed with a broad back and as thick as they come. 125X is a moderate framed Lewis cow from one of our favourite female producing herd sires. A maternal brother was sold to Dale Minhinnick at a previous sale.

Lot 42



HBH Bakari was our top choice at the Cattlemen's Connection Bull Sale. 66F is thick, big barreled, wide rumped, with big testicles and is an attractive package.

Parkwood **UNANIMOUS** 66F

Lot 42	2037908	WHBA 66F	15/01/2018	Male	EPD	4.3	50	100	21	46	ACC	94	960	1375
VISION UNANIMOUS 1418					VISIONTOPLINE ROYAL STOCKMAN					S A V YOUNG JOCK 6457				
VISION EDELLA 665					JL YOUNG PRO 9003					JL LADY 07043				
TC FOREMAN 016					PARKWOOD JOY 11A 1735817					MVF VRD DATELINE 5M				
KEMBAR BANDOLIER LASS 23N					PARKWOOD JOY 17S					HEATHER JOY OF PARKWOOD 7J				

Lot 43



Parkwood **UNANIMOUS** 50F

Lot 43	2037499	BJA 50F	10/01/2018	Male					
VISION UNANIMOUS 1418			VISIONTOPLINE ROYAL STOCKMAN						
HBH BAKARI 418B 1784508			VISION EDELLA 665						
HBH BANDOLIER LASS 18R			TC FOREMAN 016						
MVF UPWARD 236X			KEMBAR BANDOLIER LASS 23N						
PARKWOOD PRIDE 39Z 1688340			SITZ UPWARD 307R						
KENOSEE PARK PRIDE 29R			MVF ELLEN 112S						
			DUSTY DAELE DUDLEY 357N						
			KENOSEE PARK PRIDE 28L						
EPD	BW	WW	YW	Milk	TM	ACC	BW	WW	Adj. YW
	2.4	43	82	21	43		87	822	1287

Loads of capacity and made thick from end to end. 50F will inject performance, appetite and gainability to his progeny. 39Z is a big middled, thick topped female who has raised a herd bull prospect here. This elite dam had a past son sell to North River Ranch.

Parkwood **UNANIMOUS** 62F

Lot 44	2037952	WHBS 62F	14/01/2018	Male
VISION UNANIMOUS 1418 HBH BAKARI 418B 1784508 HBH BANDOLIER LASS 18R BLACKTOF T BANDOLIER 5M PARKWOOD LADY ANN 44W 1505486 LADY ANN OF PARKWOOD 30M				
VISIONTOPLINE ROYAL STOCKMAN VISION EDELLA 665 TC FOREMAN 016 KEMBAR BANDOLIER LASS 23N ANGUS ACRES BANDY 96X ROBAN LASSIE 34E CRESCENT CREEK LEGEND 148G LADY PEARSON OF PARKWOOD 42F				

EPD	BW	WW	YW	Milk	TM	ACC	BW	WW	Adj. YW
	3.7	34	71	20	37		94	836	1251

A young sire that covers a lot of bases with his structure, soundness and growth and will have the ability to sire calves that will be easily marketable.

Lot 44



Parkwood **UNANIMOUS** 89F

Lot 45	2037918	WHBA 89F	21/01/2018	Male
VISION UNANIMOUS 1418 HBH BAKARI 418B 1784508 HBH BANDOLIER LASS 18R JL YOUNG PRO 9003 PARKWOOD ALICIA 140A 1735881 PARKWOOD ALICIA 60S				
VISIONTOPLINE ROYAL STOCKMAN VISION EDELLA 665 TC FOREMAN 016 KEMBAR BANDOLIER LASS 23N S A V YOUNG JOCK 6457 JL LADY 07043 S A NEUTRON 377 ALICIA OF PARKWOOD 20L				

EPD	BW	WW	YW	Milk	TM	ACC	BW	WW	Adj. YW
	3.9	48	90	18	42		95	832	1213

The consistency of these Unanimous sons is second to none. A bull with length of spine and smoothness with a big scrotal will make him a pen highlight.

Lot 45



Parkwood **UNANIMOUS** 64F

Lot 46	2037951	WHBS 64F	14/01/2018	Male
VISION UNANIMOUS 1418 HBH BAKARI 418B 1784508 HBH BANDOLIER LASS 18R COLE CREEK CEDAR RIDGE 1V PARKWOOD LAWN 1C 1858044 PARKWOOD LAWN 42A				
VISIONTOPLINE ROYAL STOCKMAN VISION EDELLA 665 TC FOREMAN 016 KEMBAR BANDOLIER LASS 23N COLE CREEK BLACK CEDAR 46P COLE CREEK CLOVANADA 49S HF KODIAK 123Y PARKWOOD LAWN 82S				

EPD	BW	WW	YW	Milk	TM	ACC	BW	WW	Adj. YW
	2.3	50	89	24	49		86	882	1253

The combination of Cedar Ridge and Unanimous has provided a lower birth weight with exceptional growth. A moderately framed, thick butted bull which will sire many powerful offspring. A maternal brother sold to Leonard Yaskiw at a previous Blue Collar Sale.

Lot 46



Lot 47



Parkwood **AMBUSH** 63F

Lot 47	2037504	BJA 63F	14/01/2018	Male
	TJF 20X AMBUSH 14Z		TJF AMBUSH 20X	
	HBH BEACON 489B 1784566		TJF MS FREEDOM 35U	
	KEMBAR ELINE 48Y		SOO LINE KODIAK 8158	
			KEMBAR ELINE 112U	
	CRESCENT CREEK SUPER X 91S		DWAJO SUPER X 104N	
	PARKWOOD TIBBIE 65Z 1688344		CRESCENT CREEK ROSEBUD 97P	
	PARKWOOD TIBBIE 35W		REMINGTON COPENHAGEN 137R	
			PARKWOOD TIBBIE 053R	

EPD	BW	WW	YW	Milk	TM	ACC	BW	WW	Adj. YW
	1.7	44	83	17	39		75	830	1220

A light birth weight with loads of performance, volume and rib shape. Will sire easy fleshing daughters and steers that weigh heavy.

Lot 48



Parkwood **AMBUSH** 22F

Lot 48	2076225	WHBA 22F	06/01/2018	Male
	TJF 20X AMBUSH 14Z		TJF AMBUSH 20X	
	HBH BEACON 489B 1784566		TJF MS FREEDOM 35U	
	KEMBAR ELINE 48Y		SOO LINE KODIAK 8158	
			KEMBAR ELINE 112U	
	HF KODIAK 123Y		HF KODIAK 5R	
	PARKWOOD QUEEN 37C 1857989		2HR TIBBIE 30R	
	PARKWOOD QUEEN 24Y		REMINGTON COPENHAGEN 137R	
			PARKWOOD QUEEN 36S	

EPD	BW	WW	YW	Milk	TM	ACC	BW	WW	YW
	3.0	51	92	23	48		86	888	1285

22F presents the thickness, volume and muscle shape of an ideal beef bull.

Lot 49



Parkwood **LUTE** 77F

Lot 49	2037954	WHBS 77F	18/01/2018	Male
	PLEASANT VALLEY LUTE 1207		PLAINVIEW LUTTON E102	
	HF LUTE 281D 1908337		CHERRY KNOLL ELSA 8014	
	HF TIBBIE 27A		HF TIGER 5T	
			HF TIBBIE 258W	
	S A V REVERE 1180		S A V 707 RITO 9969	
	SHRX BLACKCAP 15B 1809104		A C DUKE GIRL 57	
	SMX BLACKCAP 101W		S A V WALL STREET 7091	
			WILP/HAR BLACKCAP 075L	

EPD	BW	WW	YW	Milk	TM	ACC	BW	WW	Adj. YW
	1.7	36	69	22	40		85	756	1150

A solid made Lute son that will work well with calving ease and growth. 15B was purchased from Swan Hills Ranch and has exceeded our expectations. Moderate framed with a top notch udder and great feet.

Parkwood **QUEEN RUTH** 28F

Lot 50	2037893	WHBA 28F	07/01/2018	Female					
S A V REGISTRY 2831		RITO 707 OF IDEAL 3407 7075							
S A V SENSATION 5615 1943126		S A V MADAME PRIDE 0075							
S A V BLACKCAP MAY 4136		S A V 8180 TRAVELER 004							
CRESCENT CREEK SUPER X 915		S A V MAY 2397							
PARKWOOD QUEEN RUTH 32X 1562045		DWAJO SUPER X 104N							
PARKWOOD QUEEN RUTH 167U		CRESCENT CREEK ROSEBUD 97P							
		S A V FINAL ANSWER 0035							
		PARKWOOD QUEEN RUTH 1535							
EPD	BW	WW	YW	Milk	TM	ACC	BW	Adj. WW	Adj. YW
	3.4	55	96	19	47		85	593	942

28F is a thick made heifer with natural muscling and easy do-ability. Her dam is a powerfully framed cow that weans heavy calves that straight up perform. A maternal sister sold at a previous sale to Ryan Ferguson as well as a maternal brother to Jeff Davis.

Lot 50



Parkwood **HEATHER QUEEN** 35F

Lot 51	2037894	WHBA 35F	07/01/2018	Female					
S A V REGISTRY 2831			RITO 707 OF IDEAL 3407 7075						
S A V SEEDSTOCK 4838 1890621			S A V MADAME PRIDE 0075						
S A V BLACKCAP MAY 4136			S A V 8180 TRAVELER 004						
			S A V MAY 2397						
IDEAL 4355 OF 0T26 2440			SS OBJECTIVE T510 0T26						
PARKWOOD HEATHER QUEEN 29X 1583776			IDEAL 2440 OF 7407 7275						
PARKWOOD HEATHER QUEEN 10T			BROOKMORE BANDO 5175 145P						
			HEATHER QUEEN OF PARKWOOD 10H						
EPD	BW	WW	YW	Milk	TM	ACC	BW	Adj. WW	Adj. YW
	3.9	58	101	20	49		88	551	749

This heifer's S A V grand dam is a major impact, multi-trait leading cow with an unprecedented production record. She is a smooth sided feminine heifer with extra volume and mass that will be a productive powerhouse in her new herd.

Lot 51



Parkwood **HEATHER QUEEN** 97F

Lot 52	2037922	WHBA 97F	26/01/2018	Female					
VISION UNANIMOUS 1418			VISIONTOPLINE ROYAL STOCKMAN						
HBH BAKARI 418B 1784508			VISION EDELLA 665						
HBH BANDOLIER LASS 18R			TC FOREMAN 016						
HARB PENDLETON 765 J H			KEMBAR BANDOLIER LASS 23N						
PARKWOOD HEATHER QUEEN 15Z 1707339			S A V FINAL ANSWER 0035						
PARKWOOD HEATHER QUEEN 32P			H A R B BLACK LADY 375 J H						
			ALBERDA TRAVELER 416						
			HEATHER QUEEN OF PARKWOOD 2J						
EPD	BW	WW	YW	Milk	TM	ACC	BW	Adj. WW	Adj. YW
	2.3	56	100	25	53		86	672	877

97F's grand dam was designated elite and raised 15 calves selling multiple offspring through Blue Collar Bull Sales. If you want a no fuss, easy fleshing tank of a heifer, here is the one to buy.

Lot 52



Lot 53

Parkwood **WILLA QUEEN** 111F

Lot 53	2037930	WHBA 111F	02/02/2018	Female					
TJF 20X AMBUSH 14Z			TJF AMBUSH 20X						
HBH BEACON 489B 1784566			TJF MS FREEDOM 35U						
KEMBAR ELINE 48Y			SOO LINE KODIAK 8158						
			KEMBAR ELINE 112U						
MVF VRD DATELINE 5M			VERMILION DATELINE 7078						
PARKWOOD WILLA QUEEN 69W 1505985			MVF LADY ANNE 30F						
			KBJ SAMURAI 142X						
WILLA QUEEN OF PARKWOOD 6G			WILLA QUEEN OF PARKWOOD 383Z						
EPD	BW	WW	YW	Milk	TM	ACC	BW	Adj. WW	Adj. YW
	5.0	51	96	21	47		90	635	888

This Ambush female's sire is best known for his broody, easy keeping, highly productive daughters with excellent dispositions and tremendous udders. 111F is a prime example of this. Her premiere dam has muscle, shape and mass and carries a flawless udder.

Lot 54

Parkwood **HEATHER JOY** 117F

Lot 54	2037933	WHBA 117F	05/02/2018	Female					
TJF 20X AMBUSH 14Z									
HBH BEACON 489B 1784566									
KEMBAR ELINE 48Y									
BLACKTOF T BANDOLIER 5M									
PARKWOOD HEATHER JOY 89U 1446320									
PARKWOOD HEATHER JOY 77N									
TJF AMBUSH 20X									
TJF MS FREEDOM 35U									
SOO LINE KODIAK 8158									
KEMBAR ELINE 112U									
ANGUS ACRES BANDY 96X									
ROBAN LASSIE 34E									
CRESCENT CREEK LEGEND 148G									
HEATHER JOY OF PARKWOOD 77J									
EPD	BW	WW	YW	Milk	TM	ACC	BW	Adj. WW	Adj. YW
	3.3	42	76	19	40		85	589	845

117F is sound in design with great feet and leg structure and has the capability to be a successful producer.



Thanks to Steve & Barry of Yorkton Richardson Pioneer for supporting our kids by purchasing Katie's 4-H steer.



Thanks to Big Garry Hail Insurance for supporting our kids for many years by purchasing their 4-H steers.

SWAN HILLS RANCH

Welcome to the 13th Annual "Blue Collar Bull Sale", we appreciate the opportunity to present our set of bulls and heifers offering with two great families.

We at Swan Hills Ranch continue to be busy and moving in all directions. Robyn and I traveled through seven states in late August into September viewing Angus herds as far south as southeastern Missouri to Musgrave Angus, Illinois. Seeing the cow herds from the bulls we used in our AI program and donor cows reassured us of how we want to produce our cow herd in the right direction, maternal strengths, leg set, teat placement and the feminine angular (pear shape) we look for in our cow herd. On the show side, Swan Hills Ranch made our first debut at Denver at the NWSS, where Martina and Robyn showcased a foundation female in the making and a base which the girls want to start their own show program, stay tuned!

The bulls we continue to use in our cow herd are industry leading sires with our main focus on calving ease, maternal milk and a balance set of EPDs: Musgrave Skyhigh, S A V Sensation, 4M Element, S A V Harvester.

This year we are offering three two year old bulls, an S A V International son out of a front pasture MVF cow and two other calving ease heifer bulls which we used in rotation in our heifer pen, we await your inspection.

Hope to see you at the sale, feel free to call us with any questions on our offering.



Swan Hills retains the right to ½ interest semen rights on all bulls in the sale and the rights to two flushes on the females. We will arrange at no cost or inconvenience to the buyer.

Lot 55



SHR **ELEMENT** 804F

Lot 55	2067296	SHRX 804F	20/02/2018	Male					
	POSS ELEMENT 215	POSS EASY IMPACT 0119							
4M ELEMENT 405 1886671		POSS ERICA 004							
4M BLACKBIRD 2004		SITZ UPWARD 307R							
		RIVERBEND BLACKBIRD 4301							
		O C C PAXTON 730P							
COLEMAN CHARLO 0256		BOHI ABIGALE 6014							
EASTONDALE COUNTESS 28'16 1925693		SOO LINE KODIAK 1131							
EASTONDALE COUNTESS 50'14		EASTONDALE COUNTESS 45'06							
EPD	BW	WW	YW	Milk	TM	ACC	BW	WW	YW
	1.3	61	102	23	54		71	842	1265

The dam, 28D, was a high selling heifer from Eastondale Angus. Look for calving ease, long, bigger bodied, correct structure in this bull. 804E was part of our Agribition 2018 string. We used 4M Element 405 as our "go to AI sire" for our heifer pen.

Recommended for heifers.



4M **ELEMENT** 405

Lot 56



SHR **ELEMENT** 822F

Lot 56	2076920	SHRX 822F	30/01/2018	Male					
POSS ELEMENT 215		POSS EASY IMPACT 0119							
4M ELEMENT 405 1886671		POSS ERICA 004							
4M BLACKBIRD 2004		SITZ UPWARD 307R							
		RIVERBEND BLACKBIRD 4301							
J SQUARE S BEST INTEREST 327A		S A V BEST INTEREST 0136							
SHR GEORGINA 60D 1944595		SOO LINE STAR MAIDEN 1067							
MVF GEORGINA 324X		MVF NET WORTH 113T							
		MVF GEORGINA 85P							
EPD	BW	WW	YW	Milk	TM	ACC	BW	WW	YW
	1.0	57	95	25	53		64	593	1042

Calving ease, 4M Element son highly recommended for heifers. The dam, 60D, is a 1250 lb. cow with loads of milk and a picture perfect udder. Strong maternal going back to the grand dam, MVF Georgina, Bon View New Design cow family.

Recommended for heifers.

Lot 57



SHR **ELEMENT** 800F

Lot 57	2076928	SHRX 800F	30/01/2018	Male					
POSS ELEMENT 215		POSS EASY IMPACT 0119							
4M ELEMENT 405 1886671		POSS ERICA 004							
4M BLACKBIRD 2004		SITZ UPWARD 307R							
		RIVERBEND BLACKBIRD 4301							
		SANKEYS LAZER 609 OF 6N							
SANKEYS LARAMIE 114		LAFLINS GEORGINA OF 6N 614							
EASTONDALE QUEEN MOTHER 105'14 1789224		B.B.A.R HERO 1267							
EASTONDALE QUEEN MOTHER 28'06		EASTONDALE QUEEN MOTHER 90F							
EPD	BW	WW	YW	Milk	TM	ACC	BW	WW	YW
	2.0	54	94	24	51		74	771	1192

Thick made, 4M Element son. Calving ease at its finest. I can't talk enough about how Element has offered calving ease in our heifer breeding program. 4M is now dead, so here's a chance to own a son. 105B is one of the high selling heifer calves we acquired out of the annual Eastondale Sale. We have been more than pleased with the offering Dale and Shelly and Erica offer out of their Angus program each year at their annual sale. The dam, a Sankeys Laramie daughter goes back to the Queen's Mother 90F cow family. 800F was born in the barn and stayed in for five days and still had short ears, don't let that distract you from selecting this exceptional bull calf!

Recommended for heifers.



The kids of the Blue Collar families

SHR **ELEMENT** 814F

Lot 58	2076925	SHRX 814F	13/02/2018	Male					
POSS ELEMENT 215		POSS EASY IMPACT 0119							
4M ELEMENT 405 1886671		POSS ERICA 004							
4M BLACKBIRD 2004		SITZ UPWARD 307R							
		RIVERBEND BLACKBIRD 4301							
		S A V BEST INTEREST 0136							
J SQUARE S BEST INTEREST 327A		SOO LINE STAR MAIDEN 1067							
SHR HEROINE 61D 1944593		VISION UNANIMOUS 1418							
PEAK DOT HEROINE 762A		HEROINE OF PEAK DOT 958U							
EPD	BW	WW	YW	Milk	TM	ACC	BW	WW	YW
	0.8	65	108	23	55		73	597	1087

4M Element son offering calving ease with performance for your heifer breeding requirements. 4M Element has exceeded our expectations for exceptional performance and correct structure, added growth in his calves and muscle shape. His pedigree brings outcross genetics to bloodlines not seen in these areas. 4M Element was a high selling, calving ease bull SEMEX features, acquired out of Blue Hills, Nebraska.

Recommended for heifers.

SWAN HILLS RANCH

Out of our front pasture donor cow, 1Y, dam of our high selling bull that we sold to Greg and Lisa Boughton for ½ interest for \$24,000. 801E exhibits natural thickness on a moderate frame. His sire S A V Harvestor is without a doubt one of the most powerful bulls of the industry, backed up with an amazing performance pedigree. S A V Harvestor was the highest valued bull in the 2011 spring bull sale season, topping the Schaff Angus Valley Sale at \$275,000.



S A V **HARVESTOR** 0338

Lot 59



SHR **HARVESTOR** 801F

Lot 59	2076921	SHRX 801F	02/02/2018	Male
--------	---------	-----------	------------	------

S A V HERITAGE 6295
S A V **HARVESTOR** 0338 1633982
S A V EMBLYNETTE 7749

CAR DUKE 104
S A V BLACKCAP MAY 4136
S A V NET WORTH 4200
SAV EMBLYNETTE DIAMOND 6377

EPD	BW	WW	YW	Milk	TM	ACC	BW	WW	YW
	4.1	60	107	23	52		86	801	1204

HF TIGER 5T
BH ECHO 1Y 1701818
HF JUNE 55W

HF KODIAK 5R
HF ECHO 84R
HF HEMI 151T
2HR JUNE 7N

SHR **HARVESTOR** 825F

Lot 60

Lot 60	2076923	SHRX 825F	07/02/2018	Male
--------	---------	-----------	------------	------

S A V HERITAGE 6295
S A V **HARVESTOR** 0338 1633982
S A V EMBLYNETTE 7749

CAR DUKE 104
S A V BLACKCAP MAY 4136
S A V NET WORTH 4200
SAV EMBLYNETTE DIAMOND 6377
S A V CAMARO 9272
MV F TIBBIE 22P
MV F PIONEER 95X
MV F TIBBIE 175X

SHR CAMARO 20Z
SHR TIBBIE 12B 1940702
MV F TIBBIE 38Z

EPD	BW	WW	YW	Milk	TM	ACC	BW	WW	Adj. YW
	5.4	60	105	26	55		86	745	1218

A performance calf out of S A V Harvestor and out of Robyn's 4-H project back in 2014. Tibbie cow Family, S A V Pioneer, Camaro, and Net Worth, the list of proven pedigrees has this calf stacked up for a predictable results of calving ease and performance.



Robyn at National Western Stock Show - Third in Class



Lot 61



SHR **SKYHIGH** 809F

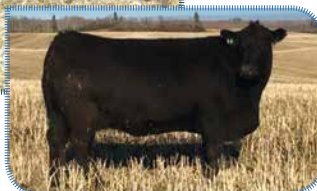
Lot 61	2076919	SHRX 809F	30/01/2018	Male					
	MUSGRAVE BIG SKY		CONNEALY EARNAN 076E						
MUSGRAVE SKY HIGH 1535 1952446			SAV PRIMROSE 7861						
FLAG QUEEN W 00649			S A V 004 DENSITY 4336						
			PLATTEMERE QUEEN W 660						
			COLE CREEK BLACK CEDAR 46P						
	KA BLACK CEDAR 290		KA HAZEL 7048						
EASTONDALE ROSEBUD 34'13 1742865			H A IMAGE MAKER 0415						
	MWC ROSEBUD 34W		CRESCENT CREEK ROSEBUD 115F						
EPD	BW	WW	YW	Milk	TM	ACC	BW	WW	YW
	1.8	50	86	26	51		82	762	1142

Sky High was the lead-off and high selling bull at the 2016 Musgrave Angus Bull Sale. He is a stand out performance bull that uniquely combines stoutness, base width and muscle with depth of fore rib and eye appeal second to none. From the ground up Sky High has superior structural soundness and hoof quality. We had the opportunity to tour Musgrave Ranch in Illinois last September and was impressed with the quality, consistency in their herd.

Recommended for mature framed heifers.

MUSGRAVE **SKY HIGH** 1535

Lot 62



SHR **SKYHIGH** 839F

Lot 62	2076922	SHRX 839F	03/02/2018	Male					
	MUSGRAVE BIG SKY		CONNEALY EARNAN 076E						
MUSGRAVE SKY HIGH 1535 1952446			SAV PRIMROSE 7861						
FLAG QUEEN W 00649			S A V 004 DENSITY 4336						
			PLATTEMERE QUEEN W 660						
S A V CAMARO 9272			S A V FINAL ANSWER 0035						
SWAN HILLS TIBBIE 12Z 1665076			S A V DUKE GIRL 7348						
			SITZ UPWARD 307R						
MVF TIBBIE 25X			MVF TIBBIE 22P						
EPD	BW	WW	YW	Milk	TM	ACC	BW	WW	YW
	1.3	55	97	20	48		79	762	1245

Musgrave Sky High son out of an S A V Camaro daughter going back to the famous Tibbie 25X donor cow. 25X progeny have now hit countries of Russia, China, France and Northern England.

MVF Tibbie 25X
Grand dam to Lot 62

Lot 63



SHR **SKYHIGH** 831F

Lot 63	2067297	SHRX 831F	15/03/2018	Male					
	MUSGRAVE BIG SKY		CONNEALY EARNAN 076E						
MUSGRAVE SKY HIGH 1535 1952446			SAV PRIMROSE 7861						
FLAG QUEEN W 00649			S A V 004 DENSITY 4336						
			PLATTEMERE QUEEN W 660						
	RING CREEK BIG PAYOUT 41Z		CONNEALY CONSENSUS 7229						
SHR MAYFLOWER 6B 1945765			LADY OF RING CREEK 10W						
	MVF MAYFLOWER 291X		MVF VRD DATELINE 34P						
			MVF MAYFLOWER 114H						
EPD	BW	WW	YW	Milk	TM	ACC	BW	WW	YW
	1.9	53	94	20	47		77	812	1184

Moderate frame with loads of thickness, out of the SHRX 129B Revere daughter, flushmate to the high selling bull at the 10th Annual Blue Collar Sale selling to Greg and Lori Boughton of Roblin, MB. for half share at \$24,000. Half brother to the high selling bull in 2018 sale, 77E sold to Patricia Smith, this cow continuously weans over 60% of her bodyweight in 205 days. Musgrave Sky High 1535 progeny deliver stoutness, superior structure and calving ease, here's a son off the Musgrave high seller for \$136,000 and ready to work for you.

SHR SENSATION 826F

Lot 64

Lot 64	2076915	SHRX 826F	21/01/2018	Male
S A V REGISTRY 2831		RITO 707 OF IDEAL 3407 7075		
S A V SENSATION 5615 1943126		S A V MADAME PRIDE 0075		
S A V BLACKCAP MAY 4136		S A V 8180 TRAVELER 004		
		S A V MAY 2397		
S A V INTERNATIONAL 2020		S A V HARVESTOR 0338		
SHR CAROLINA 49D 1944588		S A V EMBLYNETTE 5483		
MVF GEORGINA 110X		S A V PIONEER 7301		
		MVF GEORGINA 97P		

EPD	BW	WW	YW	Milk	TM	ACC	BW	WW	YW
	2.9	60	106	23	53		71	653	1025

Loads of predictable pedigree stacked into this calf. The dam is a moderate 1400 lb. S A V International cow going back to a foundation female from Mountain View Farms. The sire S A V Sensation was another calving ease sire used in our heifer pen and tipped the scale with exceptional weaning weights.



S A V SENSATION 5615



SHR POWERCHIP 824F

Lot 65

Lot 65	2076918	SHRX 824F	30/01/2018	Male
EXAR BLUE CHIP 1877B		DAMERON FIRST CLASS		
ST POWER CHIP 4790 1959039		GREENS PRINCESS 1012		
ST MISS WIX 8002		B C MATRIX 4132		
		CIRCLE OAK MISS WIX 4014		
SOUTHLAND THRILLER 83X		SOUTHLAND TWO FITTY 250T		
MVF ZARA LISA 32B 1791188		SOUTHLAND BELLE 89R		
MVF ZARA LISA 162X		BUSHES GRAND DESIGN		
		MVF ZARA LISA 327R		

EPD	BW	WW	YW	Milk	TM	ACC	BW	WW	YW
	3.5	56	82	20	47		87	698	1122

A Power Chip son, a sire off of the Reserve Champion Denver Champion. Moderate frame, great eye appeal. Maternal strength of this calf goes back to our MVF Zara Lisa cow family. 32B is among our top cow group out of our donor cow 162X, a Bushes Grand Design foundation female that will be in our herd until the "cows come home!"



ST POWER CHIP 4790



Agribition 2017 Crew
Better late than never



The Lunch Crew

Lot 66



SHR **BEST INTEREST** 816F

Lot 66	2076924	SHRX 816F	13/02/2018	Male					
	S A V BEST INTEREST 0136	S A V BISMARCK 5682							
J SQUARE S	BEST INTEREST 327A 1749540	S A V EMBLYNETTE 8172							
	SOO LINE STAR MAIDEN 1067	SOO LINE YELLOWSTONE 6344							
		SOO LINE STAR MAIDEN 9075							
		S A V FINAL ANSWER 0035							
	RRAR FINAL ANSWER 9W	MOWAT JAYBIRD 3N							
RRAR BANNORA 7Y 1602566		STEVENSON BRUNO 6371							
	BANNORA OF PEAK DOT 429R	BANNORA OF PEAK DOT 594K							
EPD	BW	WW	YW	Milk	TM	ACC	BW	WW	YW
	0.9	48	79	24	48		81	634	1094

A moderate framed Best Interest calf. Predictable pedigree with S A V Final Answer, Net Worth for great muscle expression, out of a dam with exceptional milk and a moderate 1400 lb. cow.

J SQUARE S **BEST INTEREST** 327A

Lot 67



SHR **BEST INTEREST** 830F

Lot 67		2076926		SHRX 830F		18/02/2018		Male	
		S A V REVERE 1180				S A V 707 RITO 996			
SHR REVERE 127B 1821019						A C DUKE GIRL 57			
BH ECHO 1Y						HF TIGER 5T			
						HF JUNE 55W			
SHR CAMARO 20Z						S A V CAMARO 9272			
SHR MAYFLOWER 5B 1944746						MV F TIBBIE 22P			
MV F MAYFLOWER 25Z						S A V PIONEER 7301			
						MV F MAYFLOWER 291X			
PE	BW	WW	YW	Milk	TM	ACC	BW	WW	YW
EPD	2.3	42	80	24	46		72	622	1098

Predictable calving ease bull, SHR Camaro's grandsire, S A V Final Answer was the world's highest used bull in history. The cow maker, the bull maker, the calving ease specialist wrapped up in one package. The bottom side of this bull has maternal strength going back to the MV F Mayflower cow family, generations of predictability.

Lot 68



SHR **BEST INTEREST** 834F

Lot 68	2076929	SHRX 834F	19/02/2018	Male					
	S A V BEST INTEREST 0136	S A V BISMARCK 5682							
J SQUARE S	BEST INTEREST 327A 1749540	S A V EMBLYNETTE 8172							
	SOO LINE STAR MAIDEN 1067	SOO LINE YELLOWSTONE 6344							
		SOO LINE STAR MAIDEN 9075							
	S A V BRILLIANCE 8077	S A V BISMARCK 5682							
NORTHERN VIEW	ANNIE K 134B 1795899	S A V BLACKCAP MAY 5270							
	F V ANNIE K FA 130Z	S A V FINAL ANSWER 0035							
		F V ANNIE K QUEEN 1U							
EPD	BW	WW	YW	Milk	TM	ACC	BW	WW	YW
	-0.1	50	76	25	50		83	808	1204

Sired by our herd sire, Best Interest. Growth, performance and calving ease packed in a complete package. 134B, a S A V Brilliance daughter, is a mid framed 1400 lb. cow with a balanced udder and great eye appeal. Final Answer on the bottom side of the pedigree, maternal strength at its best.

SHR **BEST INTEREST** 836F

Lot 69

Lot 69	2076927	SHRX 836F	21/02/2018	Male
S A V REVERE 1180				
SHR REVERE 127B 1821019				
BH ECHO 1Y				
TC ABERDEEN 759				
PM ROSEBUD 24'13 1734170				
HF ROSEBUD 103Y				
S A V 707 RITO 996				
A C DUKE GIRL 57				
HF TIGER 5T				
HF JUNE 55W				
C R A BEXTOR 872 5205 60				
TC BLACKBIRD 4034				
HF TIGER 5T				
HF ROSEBUD 94P				

PE	BW	WW	YW	Milk	TM	ACC	BW	WW	YW
EPD	0.6	43	79	27	49		68	643	1081

A SHR Revere son, out of our herd sire we own with Greg and Lisa Boughton. A calf highly recommended for heifers. The dam, Poplar Meadows Rosebud 24A, was a high selling bred we acquired out of the Agribition sale. Another calf stacked with a calving ease pedigree of TC Aberdeen on the top side and Hamilton's Tiger 5T on the bottom side of the dam's pedigree.

Recommended for heifers.



SHR **BEST INTEREST** 808F

Lot 70

Lot 70	3/4 Angus 1/4 Simm	SHRX 808F	Unregistered	Male
S A V BEST INTEREST 0136				
J SQUARE S BEST INTEREST 327A 1749540				
SOO LINE STAR MAIDEN 1067				
LIMESTONE TILT T247				
SHRX 22Z - UNREGISTERED ANGUS/SIMM				
S A V BISMARCK 5682				
S A V EMBLYNETTE 8172				
SOO LINE YELLOWSTONE 6344				
SOO LINE STAR MAIDEN 9075				
B C MARATHON 7022				
B C MATRIX 650H ANCHOR 390				
WHEATLAND BULL 6805				

ACC	BW	WW	YW
	84	722	1081

Sired by our herd sire J Square S Best Interest 327A, look to 808E as our top commercial mans next herd sire. Moderate frame and out of our SHRX 22Z, a heavy milking Limestone Tilt daughter, a cow that Dr. Immerkar says is his favorite cow at SHR.

Recommended for heifers.



Sale Day 2018
Martina, Alexis and Robyn



Agribition 2018
Robyn, Payton and Martina
Post show day rest
Martina's 3:00 a.m. alarm makes
for a long day, but exciting!

Lot 71

SHR **INTERNATIONAL** 79E

Lot 71 2007151 SHRX 79E 03/03/2017 Male

S A V HARVESTOR 0338
S A V INTERNATIONAL 2020 1724665
S A V EMBLYNETTE 5483

S A V HERITAGE 6295
S A V EMBLYNETTE 7749
S A V 8180 TRAVELER 004
S A V EMBLYNETTE 7260

An S A V International son out of our front pasture MVF x S A V Pioneer daughter. Proven genetic power on the top side combined with the "well known" MVF Georgina cow family make this bull calf your next herd sire prospect. We used this bull on one cycle in a small pasture last year and anxiously await his progeny.

S A V **INTERNATIONAL** 2020

EPD	BW	WW	YW	Milk	TM	ACC	BW	WW	YW
	5.1	64	109	22	54			782	1216

S A V PIONEER 7301
MVF GEORGINA 110X 1550239
MVF GEORGINA 97P

S A V FINAL ANSWER 0035
S A V BLACKBIRD 5297
B/R NEW FRONTIER 095
MVF GEORGINA 17J

Lot 72

SHR **REVERE** 45E

Lot 72 2007155 SHRX 45E 15/03/2017 Male

S A V REVERE 1180
SHR REVERE 127B 1821019
BH ECHO 1Y

MVF NET WORTH 113T
MVF GEORGINA 324X 1550263
MVF GEORGINA 85P

S A V 707 RITO 9969
A C DUKE GIRL 57
HF TIGER 5T
HF JUNE 55W
S A V NET WORTH 4200
MVF ROSEBUD 906N
NICHOLS EXTRA H6
MVF GEORGINA 14M

EPD	BW	WW	YW	Milk	TM	ACC	BW	WW	YW
	1.6	37	70	24	42			565	1003

Smooth made Revere son used as a clean up on our heifer pen. Revere has become the "bet the ranch" calving ease heifer bull. Out of the MVF Georgina cow family, the one characteristic that stands out in this cow family is milk and well-balanced, picture perfect udders.

Recommended for heifers.

SHR **REVERE** 127BSHR **WINDY** 29E

Lot 73



Lot 73 2007147 SHRX 29E 17/02/2017 Male

EASTONDALE REALLY WINDY 06'13
EASTONDALE 6A WINDY 505 1884521
EASTONDALE DUCHESS 110'13

VISION UNANIMOUS 1418
SHRX ZARA LISA 1B 1809098
MVF ZARA LISA 13Z

V D A R REALLY WINDY 4097
EASTONDALE ANNIE K 60'11
EASTONDALE ALL THE WAY 11'08
KBJ DUCHESS 175U
VISIONTOPLINE ROYAL STOCKMAN
VISION EDELLA 665
HF TIGER 5T
MVF ZARA LISA 162X

EPD	BW	WW	YW	Milk	TM	ACC	BW	WW	YW
	-0.4	57	97	23	52			605	1048

29E is out of a Unanimous daughter which surfaced to the top at Agribition 2015 in the heifer championship round. 1B exhibits modern frame and loads of milk. Sired by the Lot 1 bull purchased from Eastondale Angus Bull Sale. Eastondale 6A Windy 505 boasted the highest indexing and highest ADG in their offering at the 2016 sale. Cover a larger group for your heifer pen this spring.

Recommended for heifers.

SHR **HEROINE** 805F

Lot 74

Lot 74	2067298	SHRX 805F	17/04/2018	Female
S A V BEST INTEREST 0136				
J SQUARE S BEST INTEREST 327A 1749540				
SOO LINE STAR MAIDEN 1067				
VISION UNANIMOUS 1418				
PEAK DOT HEROINE 762A 1766952				
HEROINE OF PEAK DOT 958U				
S A V BISMARCK 5682				
S A V EMBLYNETTE 8172				
SOO LINE YELLOWSTONE 6344				
SOO LINE STAR MAIDEN 9075				
VISIONTOPLINE ROYAL STOCKMAN				
VISION EDELLA 665				
S A V 004 PREDOMINANT 4438				
HEROINE OF PEAK DOT 509K				

EPD	BW	WW	YW	Milk	TM	ACC	BW	WW	YW
	0.9	67	111	22	56		81	621	904

WOW! There was plenty of discussion around the dinner table about letting this heifer leave the ranch. Out of a top Unanimous cow purchased from Peak Dot back in 2013. Fancy, halter broke and ready to show for a youth project or summer show. The dam is thick made with an exceptional set of EPDs.

SHR would like the right to one flush at a future date at our expense, convenient to the buyer.



SHR **ZARA LISA** 818F

Lot 75

Lot 75	2076914	SHRX 818F	17/01/2018	Female
POSS ELEMENT 215				
4M ELEMENT 405 1886671				
4M BLACKBIRD 2004				
J SQUARE S BEST INTEREST 327A				
SHR LISA 58D 1944592				
MVZ ZARA LISA 162X				
POSS EASY IMPACT 0119				
POSS ERICA 004				
SITZ UPWARD 307R				
RIVERBEND BLACKBIRD 4301				
S A V BEST INTEREST 0136				
SOO LINE STAR MAIDEN 1067				
BUSHES GRAND DESIGN				
MVZ ZARA LISA 327R				

EPD	BW	WW	YW	Milk	TM	ACC	BW	WW	Adj. YW
	1.3	60	97	25	55		78	617	892

A heifer calf with a pedigree making up 25% of our herd. Sired by the high selling 4M Element bull and stacked maternal pedigree going back to MVZ Zara Lisa cow family. The grand dam is one of our donor cows, MVF 162X, a Bushes Grand Design female, an opportunity to start your foundation herd with 810F, buy with confidence.



Martina - Agribition 2018
First Lady Classic





Lot 76 and 77

TWO PENS OF THREE

Consigned by:
Dale Minhinnick
 Box 31, Invermay, SK
 S0A 1M0
 Cell: 306-593-7866

Lot 78

ONE PEN OF THREE

Consigned by:
Jeff and Jody Hansen
 Springside, SK
 306-621-0122

Lot 79

ONE PENS OF THREE

Consigned by:
Kevin Clelland
 Box 2745, Swan River, MB
 204-281-0961

Lot 80

ONE PEN OF FIVE

Consigned by:
Jeff and Sherri Davis
 Box 1474, Roblin, MB
 R0L 1P0
 204-207-0104

Lot 81 and 82

TWO PENS OF THREE

Consigned by:
Joe & Ken Scherloski
 Gerald, SK
 306-743-2400

THANK YOU TO OUR 2018 BLUE COLLAR CUSTOMERS

K5 River Ranch
 North River Ranch
 Todd Britton
 Hnidey Farms
 Ed Malinowski
 Rhonda Lasko
 Cam Morgan
 Harvey Exner
 Jeff Oneil
 Ross Dublanica
 Bert Dogooijer

Chris Schwartz
 Patty Smith
 Les Schnick
 Jonathan Grunert
 Iron Saddle Ranch
 Ken Piller
 David Wonder
 Austin Vollman
 Tim Mohr
 Randy Trost
 Ted Myslichuk

Dennis Napady
 Leonard Yaskiw
 Wade McNeil
 Ryan Ferguson
 Jordan Baumung
 Thomas Michaluk
 Clint Kopelchuk
 Aaron Hoffman
 Jeff Davis
 Venture Farms
 Zuchkan Farms

Dale Minhinnick
 Vision Valley Ranch
 Peter Tokar
 Angela Mullin
 Murray Chutskoff
 Cory Jones
 Irvin Madson
 Paul Chernoff
 Corey Chesney
 3K Holdings



PRAIRIE CO-OP is dedicated to help **GROW, FUEL, EQUIP, BUILD** and **FEED** your farm. With knowledgeable staff and exceptional products, Prairie Co-op has a location to serve your farm's needs.

For **PETROLEUM** call:

- Melville — 306.728.5811
- Cupar — 306.723.1200
- Lipton — 306.336.2333
- Kelliher — 306.675.2156
- Ituna — 306.795.2441
- Lemberg — 306.335.2461

For **SEED, FERTILIZER** and **CHEMICAL** call:

- Cupar — 306.723.1200
- Strasbourg — 306.725.3200
- Kelliher — 306.718.7054
- Lipton — 306.336.2333

For **HOME CENTRE, LUMBER** and **FEED** call:

- Melville — 306.728.4461
- Fort Qu'Appelle — 306.332.0111
- Ituna — 306.795.2441
- Lipton — 306.336.2333
- Cupar — 306.723.1200
- Kelliher — 306.675.2156
- Lemberg — 306.335.2461

For **AG EQUIPMENT** call:

- Cupar — 306.723.1200
- Lipton — 306.336.2333
- Ituna — 306.795.2441
- Melville — 306.728.5811
- Strasbourg — 306.725.3200



GROW



FUEL



EQUIP



BUILD

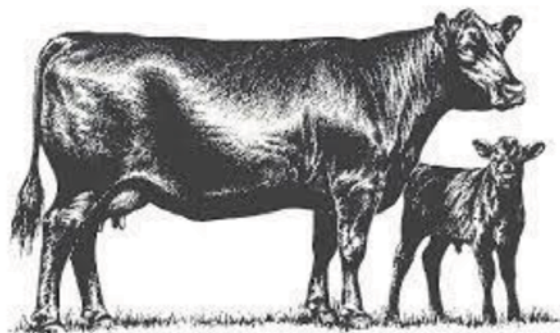


FEED

Hackman Feeds

Calving time is here, see Hackman Feeds for all your supplies. We have colostrum, diatomaceous earth, medicated calf ration, milk replacer, e cell, electrolytes and vitamins. We have a variety of loose minerals and tubs to get your cows and bulls ready for breeding season.

Call us at (306) 786-7713
385 5 Avenue North Yorkton, SK S3N 2Z9, Canada



Fred Lowenberger

Product Specialist

Future Ford

166 Service St., Highway 10 North

Melville, SK S0A 2P0

Cell: (306) 730-7969

Bus: (306) 728-5457

Fax: (306) 728-4957

Sales: 1-855-910-6230

Visit us on line at :
www.futureford.ca



Follow us on:
[@FutureFord2017](http://www.facebook.com/Melville-Future-Ford)





*Possibility
begins with
empowering you.*

At Nutrien Ag Solutions™, we want to help you grow a productive forage crop. Our impressive line-up of Proven® Seed forage products are backed by industry leading genetics and expert agronomic advice. With our extensive forage seed offering, we have an option that fits your acres. nutrienagsolutions.ca

Nutrien
Ag Solutions™

Visit your local Nutrien Ag Solutions location today.

MELVILLE • 306.728.5941
YORKTON • 306.782.2765
LEMBERG • 306.335.2265
THEODORE • 306.647.2112
WALDRON • 306.728.4055

Nutrien Ag Solutions™ and design is a trademark of Nutrien Ag Solutions, Inc. 02/2019



P.O. Box 1030
Highway #10 East
Yorkton, SK S3N 2X3
www.yorktonnewholland.com

NEW HOLLAND
AGRICULTURE

Brad Guenther
General Manager


Bus: 306.783.8511
Fax: 306.782.5595
Cell: 306.621.7978
Email: brad@yorktonnewholland.com

In Partnership with Raymore and Watrous New Holland

Deep South Animal Clinic

110 Railway Ave.
Box 387
Ogema, SK S0C 1Y0

Phone: (306) 459-2422
Fax: (306) 459-2880
dsacadmin@sasktel.net



Dr. Andrew Acton DVM DABVP

FARRELL AGENCIES LTD.



Bus: (306) 783-4477 Fax: (306) 786-7577
Toll Free: 1-800-268-3675

Website: www.farrellagencies.com
email: farrellagencies@sasktel.net

Committed to You & Your Community

MNP LLP

Brian G. Loos

Agricultural and Business Advisor

Box 2590
2424 Westwood Drive
Humboldt, SK S0K 2A0

P: 306.682.2673 ext. 7554

C: 306.621.9099

F: 306.682.5910

E: brian.loos@mnp.ca

MNP.ca

ACCOUNTING > CONSULTING > TAX

Hitching Post

Tom Walsh

17 Betts Avenue
Yorkton, SK
S3N 1M1

Phone: (306) 783-5629

Fax: (306) 783-4629

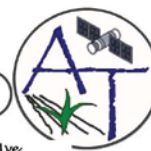
Email: hitchingpost@sasktel.net

www.hitchingpostyorkton.ca

AgraTactics... Agronomy

306-783-2767

25 Myrtle Ave.
Yorkton, SK
S3N 4G5



Yorkton Ag & Auto Supply

Bryce & Della Arnold
Owners / Operators

Box 100 • 552B Broadway St. East
Windsor Centre - Hwy. #10 East
Yorkton, Saskatchewan S3N 2V6

(306) 782-1434

Fax: (306) 783-1415



Kelvin Hawreluik

Box 32
Sheho, SK
S0A 2T0
306-269-7323
E-mail: fasthorses@sasktel.net

Genex Cooperative, Inc.

A Subsidiary of Cooperative Resources International

J-MACK Sandblasting
 A Division of J-MACK Painting Ltd.
 PO Box 22039
 Yorkton, SK
 S3N 4B2
 306.621.8442
 info@j-mackpainting.ca




Morgan A.I. Services
 306-744-7411
 Saltcoats, SK S0A 3R0

www.horizoncu.ca

Branches in:

Melville	306-728-5425
Grayson	306-794-2155
Grenfell	306-697-2803
Neudorf	306-748-2255
Wolseley	306-698-2252



HORIZON
 CREDIT UNION
Today, Tomorrow, Together

See us for all your financial needs.

Proudly Supporting the Communities We Serve

GOLLY's TRENCHING
 PO Box 11
 GOODEVE, SK S0A 1C0

- COMPLETE WATER SEPTIC SYSTEM
- BACKHOE SERVICE
- DIRT AND GRAVEL HAULING - END DUMP TRAILER
- PAYLOADER WORK





G3 Melville
 PO Box 1210 Stn Main
 Melville, SK S0A 2P0
 Toll free: 1-844-524-5306
 Phone: 1-639-398-0120
 Fax: 639-638-6109
 askMelville@g3.ca



CANOLA ■ SOYBEANS ■ CORN ■ ALFALFA ■ GRASS BLENDS

CARLSON SEED

Joelle & Blaine Carlson
 Melville, SK
 (306)728-7848
 joelle.carlson@plantpioneer.com

NEW! LibertyLink® trait & Clubroot resistant canola varieties to protect your farm.
There is more behind every seed.
 PRODUCTS ■ SERVICES ■ SUPPORT ■ REWARDS

HILLSIDE WELDING



Fabricating,
Repairing, Mobile Welding,
Hydraulic Hoses, Certified Welder
R.R. #1 MELVILLE, SK. S0A 2P0
P.H. 728-4095 OR 728-8375 CELL
FAX 728-4782



GRAIN MILLERS

IT'S MORE THAN PROCESSING.
IT'S OUR *Promise.*

800.328.5188
grainmillers.com

JEFF BARAN

Grain Procurement Merchant

306.786.5657 ext. 566
jeff.baran@grainmillers.com

CLINT WALKER

Feed & Byproduct Sales

306.786.5657 ext. 510
clint.walker@grainmillers.com

-MooseBay Greenhouse-

Opens May 1, 2019 for annual sales

Opens May 13, 2019 for all sales

306-728-0208

www.moosebaygreenhouses.com

We offer a One Stop Shop for all your Horticultural needs....

Owned and Operated by:
Cory and Judy Kraushaar

Grayson, SK.



Ashley Kattler

Beef Sales Representative

306-695-7340

deeplakelandandlivestock@hotmail.com

YOUR SUCCESS *Our Passion.* **VOTRE SUCCÈS** *notre passion*

BIEBER TRUCKING

Duff, Saskatchewan

306-728-4999 or 306-728-7854

*Congratulations on your 13th Annual
Blue Collar Bull Sale*



DERRYL W. ZENKEWICH
Box 24
Ituna, SK S0A 1N0

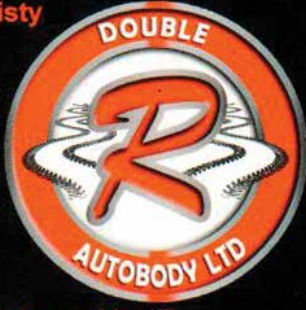
Tel: 306-795-2234
Cell: 306-795-7607
Fax: 306-795-3453

Rob Graff & Rachael Yuristy
Bodyshop Owners

Phone: 306-728-4565
Cell: 306-730-6775
Fax: 306-728-3493
Email:
bodyshop@doublerautobody.com
SGI DIAL-A-CLAIM: 1-800-667-1480

1231 Queen Street
Box 3509
Melville, SK S0A 2P0

"We meet the nicest people by accident!"



JJL
Photography

Jenna Loveridge
Melville Sk.
(306) 728-3823 or (306) 730-8478
jjlangus@live.com
www.jjllivestock.com




Double D
Fencing Company

Darren Wandy
Owner

Tel: (306)728-4550
Cell: (306)521-0429
Email: d_wandy@hotmail.com

Specializing In Livestock Fencing Solutions

Roundup
BUTCHER SHOP

Custom Meat Processing & Sausage Making

Laurel Wiebe

Box 175
Bredenbury, SK
S0A 0H0

Phone: 306-898-2255
Fax: 306-898-2252
email: roundupbutchershop@gmail.com



This image shows a full page of a document template. It consists of a series of evenly spaced, light gray horizontal lines running across the width of the page. The lines are thin and consistent in color and thickness throughout. There are no margins, text, or other graphical elements present.

1 3 T H A N N U A L

BLUE COLLAR BULL SALE

TERMS & CONDITIONS

BREEDING GUARANTEE

All cattle are sound and right, and all with a responsible breeder guarantee of satisfaction. In the event of any unlikely dispute, the regular terms and conditions, standard with the Canadian Angus Association shall apply.

WARRANTY

Blue Collar consignors guarantee to sell you a bull that is structurally sound and has passed a semen test performed by a licensed veterinarian. Should the bull fail to perform as a satisfactory breeder (unable to service cow or heifer) he will be replaced with a bull of equal value. If this is not possible an adjustment will be made to reflect the value of the bull or a credit will be given towards the purchase of another bull. We guarantee to provide you with a breeding bull for the season. We will not however provide replacement or adjustment for death, physical injury or mismanagement. Claims must be made by September 1 of year of purchase. With this in mind, we cannot stress enough the importance of insurance on your bull purchases.

INSURANCE

Insurance agents will be available sale day, or you can make other insurance arrangements through your own agent. Insurance must be purchased on all bulls that return to the respective farms.

SIGHT UNSEEN PROGRAM

Tell us your requirements and we'll select bulls that meet those orders. If you are not 100% satisfied when the trailer is in your yard, you don't own him, no questions asked.

DELIVERY

The Blue Collar Bull Sale Group will assist with delivery wherever possible. Receive a \$50 discount on your bull purchase if you take your bull home the day of or the day after the sale. Free delivery on bulls purchased within a 100 mile radius. Over 100 mile radius, delivery and cost to be worked out between the buyer and the individual consignor to the sale. Bulls returned to the consignor's farm must be insured. The buyer then assumes full responsibility for the bull. Proper care and attention will be given to all bulls returned to the farm. Bulls returning to the consignor's farm will be kept at no charge until May 1 with a cost of \$2/day after May 1. We would ask that the buyers work with us to have all bulls delivered prior to June 1.

TERMS OF SALE

Cash or cheque at par, payable to clerks of the sale on sale day, unless prior arrangements have been made. No release will be given until satisfactory settlement has been made.

**** All persons who attend the sale do so at their own risk and the owners, sale management and sale staff assume no liability, legal or otherwise, for property loss or for any accidents that may occur.**

BLUE COLLAR BULL SALE
C/O BOX 211
NEUDORF, SK
S0A 2T0



Lot 17



Lot 21



Lot 27



Lot 31



Lot 55



Lot 59



PLEASE BRING THIS CATALOGUE
WITH YOU TO THE SALE

CREATED BY:

