

BLAIRS.AG CATTLE CO.

The Pursuit of Excellence

2019 BULL SALE

Tuesday, April 2, 2019 • 1:00 PM

Jackson Cattle Co. Sale Facility,
Sedley, Saskatchewan



 **Blairs.Ag**
cattle company

WELCOME TO THE 2019

Pursuit of Excellence Sale

TUESDAY, APRIL 2, 2019 | 1:00 PM | JACKSON CATTLE CO. SALE FACILITY, SEDLEY, SASKATCHEWAN

Winter in Western Canada is always an interesting time for people in the beef business. It's a combination of "holy crap I hate winter" with "I can't wait for the baby calves to hit the ground". Winter also brings bull shopping season. Whether you are a commercial breeder looking to shape your program to fit your environment and your management style or whether you are a purebred breeder looking for the next sire to enhance your current program, we would like you to consider the "Pursuit of Excellence Bull Sale". We spend considerable time and effort looking for genetics to advance our program and yours in Canada, USA, Mexico, Argentina and New Zealand.

Our program is about raising functional cattle with a focus on the dam. The one difference in our program is that we have cows that are frame 5 and we have cows that are frame 6.2 and everywhere in between. Our goal is to ensure that regardless of the frame size of the cow that she has exceptional skeletal dimension, natural muscle shape and extraordinary rib shape. We focus on the foot, the cow's udder and we understand that she must be loose hided to ensure she can't handle the tough northern environment.

Let's talk EPDs. The beef industry continues to attempt to make selection easier through the extensive use of EPDs BUT unfortunately the horse has gotten a long ways ahead of the cart. The intention was pure but not well thought out in terms of the total package needs of the beef industry and the timeline needed to make it trustworthy. The list of traits that need to be measured is very long and includes far more than is currently being measured and reported through the current short list of EPD traits. We have listed EPD's in the catalogue but you should be aware that they may change multiple times from catalogue time to sale day.

It's important to note that EPDs for BW and carcass traits are far more accurate and have a higher correlation to reality than many of the other traits. We do hope that in the future all EPDs can rank higher on our selection criteria list but currently our model is to use genetics that have a balanced set of EPDs and stay away from genetics that are extreme in any one category.

The bulls in this year's sale are ready for your viewing and we can't wait to see you on sale day.

Kevin Blair

Blairs.Ag Cattle Company



FROM THE DESK AT T BAR...

Welcome to the Annual Blairs.Ag Cattle Company "Pursuit of Excellence" Bull Sale, April 2nd at the Jackson Cattle Sale Facility, Sedley, Saskatchewan. This great event has been the source of superior Red and Black Angus sires... breed improvers for both the commercial and seed stock producers.

The name Blairs is synonymous to agriculture in many forms... their pursuit for excellence began with their forefathers. Their parents were among the founders of Poundmaker Feedlot, the first feedlot in the world that produced ethanol, in addition to feeding cattle. If you were a Blair... you started on the ground in 4-H...which is often on the minds of Kevin and Darren each spring. The goal at Blairs has always been to ensure that their customers will have an advantage with all their selections.

The strength of the bulls on offer April 2nd must be seen to appreciate the power and substance of these two-year-old sires. Stout, rugged, not-picked-over, these bulls were slated for this event, grass raised throughout the summer, then put on a high roughage growing ration in late fall to insure the highest degree of longevity and soundness. It is difficult to find a group of powerful bulls such as these, let alone two-year-olds. In addition, Chance Jackson offers the top of his yearling bull pasture to round out the powerpacked slate.

New and exciting for 2019 is the diversity of genetics... many sired by the proven sires that walk the pastures in addition to the outcross genetics from the Argentine sires in the program. One thing you can be assured of, these sire prospects come out of one of Canada's highest maternal cow herds where udder shape and type, along with soundness and fertility are the main selection factors. This fact was evident at the recent Canadian Western Agribition where Blairs.Ag exhibited the RBC Supreme Champion Female awarded to the best female of all beef breeds in Canada. Congratulations are in order!

Stop by the sale facility any time prior the sale and view the bulls or give Kevin, Darren or any of the Blair crew a call, they can assist you with your selections and individual requirements needed for your program. Come early sale day and be guests for a complimentary noon luncheon. This great offering of bulls deserves your attention. It's worth the trip!

If we, at T Bar C, may be of assistance, prior to or sale day, please contact any of the T Bar team and we will be pleased to offer our professional services.

Chris Poley

T Bar C Cattle Co. Ltd.



Chris Poley
306-220-5006



Shane Michelson
403-363-9973



Ben Wright
519-374-3335





SALE DAY PHONES

SALE BARN	306.885.4418	CRAIG BLAIR	306.699.7607
KEVIN BLAIR	306.365.7922	LEVI JACKSON	306.537.9251
BLAKE MACMILLAN	306.528.7484	CHANCE JACKSON	306.537.4690
KENT MCCUNE	817.602.8629	JORDIE BUBA	780.818.4047
CHAD HAALAND	306.544.7770	TOM MCNEELY	790.679.7220
		LUKE LEWIS	403.771.3293

SALE STAFF

AUCTIONEER

Chris Poley 306.220.5006

RINGSIDE

Nate Marin 306.869.7130
 Shane Michelson 403.363.9973
 Ben Wright 519.374.3335

SALE MANAGEMENT

T Bar C Cattle Co. Ltd
 Box 2330
 Warman, Saskatchewan S0K 4S0
 306.933.4200 Fax: 306.934.0744
 info@tbarc.com www.tbarc.com



SALE MARKETING AGENTS

Bohrson Marketing
 Scott Bohrson 403.370.3010
 Geoff Anderson 306.731.7921
 Taylor Richards 306.821.4169



SALE DAY CONSULTANT

Cattle Business Weekly - Tony Heins 701.400.4435
 Rhett Jones 306.629.7878
 Jim (Shiney) Hallberg 306.861.0917

SALE DAY LOCATION

JACKSON CATTLE CO. SALE FACILITY
 Box 159 Sedley, Sask S0G 4K0 Phone: 306.537.9251
 From Sedley: Go 4 miles north on 620, then 1/2 mile west and 1/2 mile back north.

SIGHT UNSEEN PURCHASE

If you are unable to make the sale, we will help you with your selection and guarantee your satisfaction. Contact any us or any of our sales staff for more information.

SALE DAY VIDEO SALE

We have elected to go with a video display only sale again for 2018 and forgo running big, two year old bulls through the handling system and into the sale ring. We do this primarily for the safety of the bulls to reduce the risk of injury and bruising. As always, the bulls will be displayed and sorted for viewing in pens right outside of the sale center. We feel that with your pre-sale evaluation and the excellent videos broadcast on the screens, that you can make a selection with confidence just as previously.

DELIVERY

Bulls will be delivered free of charge anywhere in Saskatchewan, Alberta, British Columbia or Manitoba. Delivery will start the week after the sale. For US customers we will deliver bulls free of charge to central locations in the northern and central USA.

FINANCING OPTIONS

Cash or cheque are accepted sale day.

ONLINE CATALOGUE

www.blairscattleco.com

ONLINE BIDDING

www.dvauction.com



Register to bid early as bidding approval is required. Contact Sarah Buchanan with DVAuction.com with any questions at 306.681.5340 or email her at sbuchanan@gold-bar.com.

www.dlms.ca

Mark Shologan 780.699.5082
 Whitney Bosovich 780.991.3025



HOTEL ACCOMMODATIONS

Sleep Inn Regina East 306.791.1925
 Ask for the Blairs.Ag room rate.



Black and Red Angus

Two Year Old and Yearling Bulls

WELCOME TO THE BLAIRS.AG 2019

Pursuit of Excellence

BULL SALE - APRIL 2, 2019 - 1:00 PM
 Jackson Cattle Co. Sale Facility | Sedley, Saskatchewan

Calving Ease Legend

Calving Ease is often related to birth weight of a bull. This is partly true but there are other factors that influence calving ease. The dam and her management are at least 50% of calving ease. Also, the consistency of the birth weights of the sire and dam should be considered. Nutrition, gestation and environment all influence birth weight. We have rated each bull in the sale based on the information we have.

- Should produce minimal problems when bred to medium to large frame heifers.
- Recommend for larger frame heifers, second calvers or small framed cows.
- Recommend for mature cows 1400 pounds plus.

*These are the people that make
the world go round at*  **Blairs.Ag**
cattle company



Kevin Blair



Blake MacMillan



Kent McCune



Chad Haaland



Jordie Buba and Luke Lewis



Tom McNeeley



Tyler Dick



The Jackson Family



Martin Koyle & Family



Baxter Blair

Banner Year!



PM **Echo** 8'16
2018 RBC BEEF SUPREME CHAMPION FEMALE



PM **Echo** 8'16
GRAND CHAMPION FEMALE 2018



RED KJHT **Power Take Off**
NATIONAL CHAMPION BULL AT FORT WORTH





Lot 1

1 BLAIR'S **Special Forces** 803E

BBC 803E 5 Jan 2017 2076387 BW: 84 ADJ WW: 824

SIRE	S A V PIONEER 7301	S A V FINAL ANSWER 0035
	S A V PEDIGREE 4834	S A V BLACKBIRD 5297
	S A V BLACKCAP MAY 4136	S A V 8180 TRAVELER 004
		S A V MAY 2397
DAM	DUFF MAY DREAM LOOK 8063	DCC NEW LOOK 101
	D L S MISS RACHEL DL 186	C R C C MISS MIRANDA 412P
	D L S MISS RACHEL NE 861	DUFF NEW EDITION 6108
		HOFF RACHEL S C 4256 1334



BBC 803E

- Picking a lead off bull is always interesting but Blair's Special Forces 803E is the kind that needs to lead. He combines the proven S A V Blackcap May 4136 matriarch, the maternal S A V Pioneer sire and the outstanding Rachel 186 Dream Look donor. "Special Forces" puts it all together and is outcross enough to attract interest from programs across North America. He's long made, big hiped and sound.
- **Selling full possession and 50% semen interest.**

CE	BW	WW	YW	MILK	TM
••	1.8	57	97	24	53



S A V Pedigree 4834
Sire



D L S Miss Rachel DL 186
Dam



2 BLAIR'S **John Q** 809E

BBC 809E 24 Jan 2017 2029165 BW: 76 ADJ WW: 754

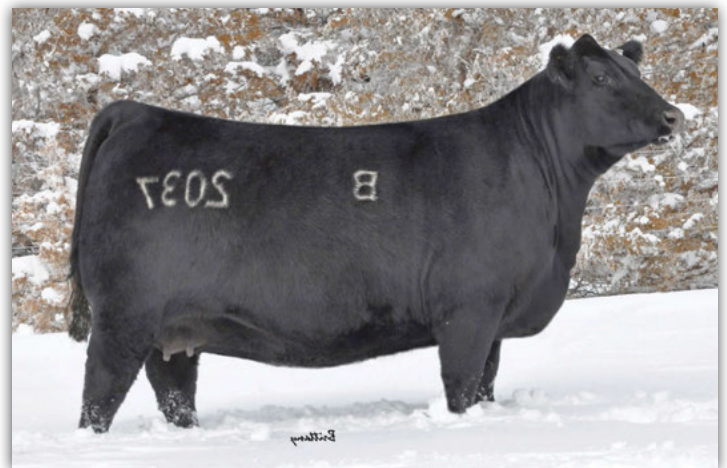
SIRE	O C C PAXTON 730P	O C C FOCUS 813F
	COLEMAN CHARLO 0256	O C C BLACKBIRD 736K
	BOHI ABIGALE 6014	SITZ TRAVELER 8180
		S A V ABIGALE 6062
DAM	HF KODIAK 5R	SANDY BAR ADVANTAGE 43M
	SOO LINE VALE BAR 2037	WILBAR RUBY 955N
	LIMESTONE VALE BAR W980	B C LOOKOUT 7024
		SHAMROCK VALE BAR EXT 1174

CE	BW	WW	YW	MILK	TM
•••	0.8	44	74	22	44

- These (2) full brothers catch the attention of everyone that tours the bulls and they will for sure catch yours. Look at the pedigree and think about how much your program can use the likes of Coleman Charlo 256 and the great Kodiak daughter in Soo Line Vale Bar 2037. What I can promise you is easy keeping, heavy muscled bull calves with calving ease and heifers that are efficient, great haired and have udders to die for.
- **Selling full possession and 50% semen interest.**



Coleman Charlo 0256
Sire



Soo Line Vale Bar 2037
Dam





3 BLAIR'S **Denzel** 806E

BBC 806E 20 Jan 2017 2027394 BW: 80 ADJ WW: 705

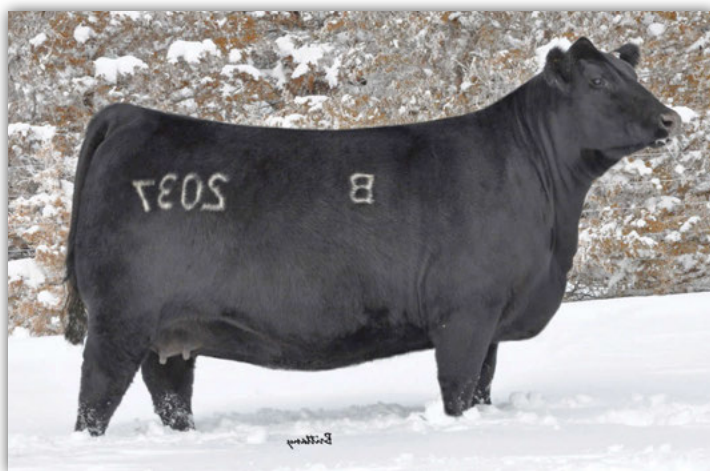
SIRE	O C C PAXTON 730P	O C C FOCUS 813F
	COLEMAN CHARLO 0256	O C C BLACKBIRD 736K
	BOHI ABIGALE 6014	SITZ TRAVELER 8180
DAM	HF KODIAK 5R	S A V ABIGALE 6062
	SOO LINE VALE BAR 2037	SANDY BAR ADVANTAGE 43M
	LIMESTONE VALE BAR W980	WILBAR RUBY 955N
		B C LOOKOUT 7024
		SHAMROCK VALE BAR EXT 1174

- Full brother to Lot 2 - BBC 809E.
- **Selling full possession and 50% semen interest.**

CE	BW	WW	YW	MILK	TM
•••	0.8	44	74	22	44



Coleman Charlo 0256
Sire



Soo Line Vale Bar 2037
Dam



4 BLAIR'S **Charlo** 593E

BBC 593E 18 Feb 2017 2000934 BW: 96 ADJ WW: 728

SIRE	O C C PAXTON 730P	O C C FOCUS 813F
	COLEMAN CHARLO 0256	O C C BLACKBIRD 736K
	BOHI ABIGALE 6014	SITZ TRAVELER 8180
		S A V ABIGALE 6062
DAM	BAR-E-L NATURAL LAW 52Y	S A V BISMARCK 5682
	BAR-E-L ERICA 74A	BAR-E-L MAGNOLIA 143K
	HF ERICA 339T	PEAK DOT FAME 2N
		HF ERICA 46P

CE	BW	WW	YW	MILK	TM
•	0.7	50	84	27	52

- We have been a strong believer in Coleman Charlo 256 and the long term impact we think he will have on the Angus breed. Our goal is always to cross top sires with top donors in our embryo program and nothing shows that more than breeding Charlo to "Miss Angus World" Erica 74A. Check out the udder on Erica 74A and then imagine an entire herd full of her daughters.



Bar-E-L Erica 74A
Dam

The Argentina Story

Argentina, with 53,565,000 head of cattle, is the world's fifth largest country with cattle population in terms of a long tradition of breeding cattle and a very solid reputation of productivity and top quality. Almost no cow in the nation receives any help during winter – no hay, no silage, they need to survive and carry a pregnancy by themselves. After generations of keeping the efficient ones, Argentina's cattle have become very hardy and adaptable to different environments.

Argentine Angus are very well known around the world as one of the top genetic sources today. We feel very proud to present this international joint program with our friends, Blair's Cattle Co., where we provided embryos out of our top females and the most proven and productive bulls in Argentina.



The first step couldn't be more auspicious. Blair's Surena 402D, sold in the Power & Perfection Sale at Canadian Western Agribition 2017 to Kurt Hamburger in Oklahoma for \$34,000.00, which was the highest selling female of that prestigious event. The second step was the offering of in the 2018 "Pursuit of Excellence" Bull Sale in which high sellers sold at \$16,500.00 to Canadian Sires & Greenwood and \$11,000.00 to Brooking Angus.

It's bull time now! Take this unique opportunity to add to your program – top end, outcross genetics proven by time and with lots of top cows in the background.

Carlos Ojea



Euro – Argentina's #1 sire today. In his first offspring, he produced the four Palermo Grand Champions in 2017 – Grand Champion Bull, Grand Champion Female, Reserve Champion Bull and Reserve Champion Female. In the same year, he also produced National Grand Champion Female and Reserve National Grand Champion Female heifer calf. He has everything – numbers (EPD's), perfect phenotype, unmatched pedigree backed by an amazing cow family and his first daughters have great udders. Euro also sired the 2018 Grand Champion and Reserve Grand Champion Bull in Argentina.

Credito – Argentina's top sire to produce females. He delivered great cows with a perfect udder, femininity and style.

Candelerio – He produces performance, power and bone.

108 Cow – 660D will be a full sibling to DM Romero. High seller in 2017. She is his most consistent producer.

Baroness 496 – Mother to 2011 Junior Division Champion in Palermo.

Fontanita 6092 – Mother of the Two Year Old Division Champion in Palermo.

- We are excited to lead off the Argentine section this year with two full brothers to the Blair's Surena 412D heifer we sold at CWA 2017 to H & H Simmentals in Oklahoma for \$34,000. These full brothers are sound and soft made and we can't wait to utilize their genetics in our program. As breeders we spend countless hours looking for outcross genetics that are sound in terms of their structure and are the right kind to match with the females in our programs. I am confident you will be impressed with what you see on sale day. These brothers are 3 star calving ease sires with loads of potential.
- **Selling full possession and 50% semen interest.**



5 BLAIR'S **Sanf Zorzal** 403D

BBC 403D 15 Nov 2016 2008389 BW: 73 ADJ WW: 698

SIRE TRES MARIAS 6301 ZORZAL
COSENZA FACONERA SANF ZORZAL 338
 COSENZA FACONERA SANF 39

TRES MARIAS 5887 HORNERO
 TRES MARIAS 4850 WIND EXT
 SANFER PERFORMA 941
 SANFER VENTA J24 PER 1072

DAM S A V 004 DENSITY 4336
HYLINE SURENA 0421
 SURENA 478 QUEN EBONETTE XPL

S A V 8180 TRAVELER 004
 S A V MAY 7238
 LEACHMAN EXPLORER
 EL ABRA QUEEN EBONETTE 3405

CE	BW	WW	YW	MILK	TM
•••					

6 BLAIR'S **Sanf Zorzal** 410D

BBC 410D 20 Nov 2016 2007777 BW: 79 ADJ WW: 716

SIRE TRES MARIAS 6301 ZORZAL
COSENZA FACONERA SANF ZORZAL 338
 COSENZA FACONERA SANF 39

TRES MARIAS 5887 HORNERO
 TRES MARIAS 4850 WIND EXT
 SANFER PERFORMA 941
 SANFER VENTA J24 PER 1072

DAM S A V 004 DENSITY 4336
HYLINE SURENA 0421
 SURENA 478 QUEN EBONETTE XPL

S A V 8180 TRAVELER 004
 S A V MAY 7238
 LEACHMAN EXPLORER
 EL ABRA QUEEN EBONETTE 3405

CE	BW	WW	YW	MILK	TM
•••					



BBC 412D
 Full Sibling to Kurt Hamburger



BBC 412D
 Maternal Sister from Palermo





7 BLAIR'S **Candelerio** 521E

BBC 521E 20 Jan 2017 2007780 BW: 98 ADJ WW: 775

SIRE	DON JOSE 176 MAXI	O C C HEADLINER 661H				
	TRES MARIAS 8155 CANDELERO	TRES MARIAS 6204 HORNERO 5314				
	TRES MARIAS 7358 LA ANDRIA	TRES MARIAS 5837 CUMELÉN				
		TRES MARIAS 6226 CALANDRIA				
DAM	LEACHMAN RIGHT TIME	N BAR EMULATION EXT				
	SURENA 496 BARONESS RT	LEACHMAN ERICA 0025				
	EL ABRA BARONESS EVIN 2813	NEWHOUSE JEWLIAN ERIC 125TH				
		EL ABRA BARONESS EVIN 2136				
	CE	BW	WW	YW	MILK	TM

8 BLAIR'S **Torazo** 509E

BBC 509E 15 Jan 2017 2008390 BW: 86 ADJ WW: 673

SIRE	DON JOSE 176 MAXI	O C C HEADLINER 661H				
	TRES MARIAS 8155 CANDELERO	TRES MARIAS 6204 HORNERO 5314				
	TRES MARIAS 7358 LA ANDRIA	TRES MARIAS 5837 CUMELÉN				
		TRES MARIAS 6226 CALANDRIA				
DAM	LEACHMAN RIGHT TIME	N BAR EMULATION EXT				
	SURENA 496 BARONESS RT	LEACHMAN ERICA 0025				
	EL ABRA BARONESS EVIN 2813	NEWHOUSE JEWLIAN ERIC 125TH				
		EL ABRA BARONESS EVIN 2136				
	CE	BW	WW	YW	MILK	TM

- Argentine full brothers of Candelerio that is known for power and performance.
- Candelerio is the sire to the Lot 1 bull from our 2018 bull sale.
- Baroness 496 is the dam to 2011 division champion in Palermo.
- **Selling full possession and 50% semen interest.**

- Full brother to Lot 7 - BBC 521E.
- **Selling full possession and 50% semen interest.**



BBC 406D
Paternal Sibling

9 BLAIR'S Zorzal 507E

BBC 507E 15 Jan 2017 2050665 BW: 81 ADJ WW: 639

SIRE	TRES MARIAS 6301 ZORZAL	TRES MARIAS 5887 HORNERO			
	COSENZA FACONERA SANF ZORZAL 338	TRES MARIAS 4850 WIND EXT			
DAM	COSENZA FACONERA SANF 39	SANFER PERFORMA 941			
	S A V 8180 TRAVELER 004	SANFER VENTA J24 PER 1072			
	RUBETA FONTANITA 6092	SITZ TRAVELER 8180			
	RUBETA FONTANITA 4860 FONTERA	BOYD FOREVER LADY 8003			
		TC FREEDOM 104			
		RUBETA 3950 FONTANITA			
CE	BW	WW	YW	MILK	TM
•••					

- Fontanita 6092 is the dam to the two year old division champion in Palermo in 2018.
- Zorzal 338 is the sire to Lots 5 & 6.
- Paternal brother to \$34,000 Blair's Surena 412D female that sold in the Power & Perfection 2017 at CWA.
- **Selling full possession and 50% semen interest.**



Maternal Sibling to 507E

10 BLAIR'S Condor Euro 411D

BBC 411D 28 Nov 2016 2017585 BW: 82 ADJ WW: 721

SIRE	BENJAMIN 1547 ZORZAL LIDER	TRES MARIAS 6301 ZORZAL			
	ERRE TE 383 CONDOR EURO	LA LEGUA LIDER 8174			
DAM	ERRE TE 27 GRINGA TOLUCA	RUBETA 3910 GRINGO			
	RED TRES MARIAS 5839 QUEBRACHO	ERRE TE 3241 EXCRIBANA BROMISTA			
	STRATUM 1652 PEPA QUEBRACHO	RED LMN SECOND 2 NONE 1377G			
	STRATUM 1422 PEPA SACARIAS	RED TRES MARIAS 4642 MARTINETA			
		TRES MARIAS 4955 SCARIAS			
		TRES MARIAS 4874 WIND EXT			
CE	BW	WW	YW	MILK	TM
••					

- Euro is the #1 sire in Argentina and his first calf crop resulted in the 2017 Grand & Reserve Bull and Grand & Reserve Female at Palermo 2017.
- Expect power and performance from the Euro sons.
- **Selling full possession and 50% semen interest.**



ERRE TE 383 Condor Euro Sire

11 BLAIR'S Discovery 658D

BBC 658D 1 Sept 2016 2027911 BW: 88 ADJ WW: 628

SIRE	O C C DISCOVERY 918D	RITO 9FB3 OF 5H11 FULLBACK			
	STRATUM 1333 CREDITO DISCOVERY	ERICA LASSIE OF R R 766B			
DAM	BLACK PRINCESS 7480 PULY	S E TURNING POINT			
	TRES MARIAS 5887 HORNERO	BLACK PRINCESS 7212 PULY			
	DON ROMEO HORNERO 108 MARY ELBOR	TRES MARIAS 4955 SCARIAS			
	MAULEON MARY ELBOR 3350 D. ALF	TRES MARIAS 5116 FOUNDER BANDO			
		MAULEON FORTE 3491 D A			
		MAULEON MARY ELBOR 3022 D			
CE	BW	WW	YW	MILK	TM
••					

- Credito females are well known in Argentina for producing top females with excellent udders.
- Blair's Discovery 658D is a full sibling to the Lot 7 in our 2018 Pursuit of Excellence Bull Sale that sold to Brooking Angus.
- 2 star calving ease.
- **Selling full possession and 50% semen interest.**



BBC 660D Full Sibling





Lot 12

12 BLAIR'S **Condor Euro** 663D

BBC 663D 6 Sept 2016 2055991 BW: 76 ADJ WW: 691

SIRE	BENJAMIN 1547 ZORZAL LIDER	TRES MARIAS 6301 ZORZAL
	ERRE TE 383 CONDOR EURO	LA LEGUA LIDER 8174
	ERRE TE 27 GRINGA TOLUCA	RUBETA 3910 GRINGO
DAM	DON ROMEO LIDER 59	O C C HEADLINER 661H
	DON ROMEO LIDER 206 MILAGROS	DOMINANTE DRAGONA 106
	DON ROMEO CREDITO 54 KATRINA	STRATUM 1333 CREDITO DISCOVERY
		TRES MARIAS 6572 GLACIAR 5330

- A very unique mating here as this is the only 206 Milagros offspring we own.
- Have a very good look at this pedigree. It is likely this mating will never happen again in North America.
- Power and performance.
- **Selling full possession and 50% semen interest.**

CE	BW	WW	YW	MILK	TM
----	----	----	----	------	----

••





13 BLAIR'S **Napoleon** 534E

BBC 534E 28 Jan 2017 1974576 BW: 96 ADJ WW: 767

SIRE	DUFF DISTINCTION 9105	DUFF BASIC INSTINCT 6501
	DUFF NAPOLEON 232	DUFF NL B351 LADY POP 619
	DUFF EUR 443 MERLE 808	DUFF NEW EDITION 6108
DAM		DCC NL 652K MERLE 443
	MCATL REACHOUT 150-1746	MCATL REACHOUT 836
	SOO LINE BLACKBIRD 2169	M A BLACKCAP 1746-4132
	MINBURN BLACKBIRD 144P	KBJ WINDY 680M
		MINBURN BLACKBIRD 117M

CE	BW	WW	YW	MILK	TM
•	3.0	43	66	16	38

- Take a very serious look at this guy. If you are scouring the planet looking for the perfect footed sire to help your program then go straight to this pen.
- The Blackbird 169Z has just earned herself a spot in our donor pen and we can't wait to see what her future holds.
- Napoleon sons are known for their structure, efficiency and calving ease.



Duff Napoleon 232
Sire



Minburn Blackbird 144P
Grand dam of BBC 534E



14 BLAIR'S **Caldwell** 603E

BBC 603E 21 Feb 2017 1983803 BW: 94 ADJ WW: 815

SIRE	BAR-E-L NATURAL LAW 52Y	S A V BISMARCK 5682
	BAR-E-L CALDWELL 9C	BAR-E-L MAGNOLIA 143K
	BAR-E-L BRIDE 121Z	SOUTHLAND THRILLER 83X
DAM	B C LOOKOUT 7024	O C C LEGEND 616L
	PFLC PARIS 5175B	GIBBET HILL MIGNONNE E37
	ALCHEMY PRIDE'S PARIS 10P	S A F 598 BANDO 5175
	ALCHEMY PRIDE 10E	

CE	BW	WW	YW	MILK	TM
•	3.9	51	78	18	44

- Bar-E-L Caldwell is a Natural Law son that comes off very top maternal lines at Bar-E-L .
- We lost Caldwell this fall so there will be very limited genetics available going forward.
- Paris 5175B is earning a spot among our favourite cows at Blairs.Ag Cattle Co.
- Take a serious look at Blair's Caldwell 603E.



Bar-E-L Caldwell 9C
Sire



PFLC Paris 5175B
Sire

15 BLAIR'S National Anthem 931E

BBC 931E 13 Mar 2017 2027396 BW: 87 ADJ WW: 691

SIRE		DAM		GENETICS					
S A V INTERNATIONAL 2020	S A V HARVESTOR 0338	BAR-E-L NATURAL LAW 52Y	S A V BISMARCK 5682	CE	BW	WW	YW	MILK	TM
S A V NATIONAL ANTHEM 5740	S A V EMBLYNETTE 5483	BAR-E-L ERICA 74A	BAR-E-L MAGNOLIA 143K	•	2.4	52	87	29	55
A C DUKE GIRL 57	CAR TRACKER 305	HF ERICA 339T	PEAK DOT FAME 2N						
	A C DUKE GIRL 330		HF ERICA 46P						

- S A V National Anthem was selected for us by Scott Bohrsen in 2016.
- These are the first sons to sell and we are excited to offer sons off both Erica 74A and Donna 812.
- Genetics you can count on.



S A V National Anthem 5740
Sire



Bar-E-L Erica 74A
Dam

16 BLAIR'S National Anthem 921E

BBC 921E 11 Mar 2017 2040658 BW: 92 ADJ WW: 660

SIRE		DAM		GENETICS					
S A V INTERNATIONAL 2020	S A V HARVESTOR 0338	N BAR EMULATION EXT	EMULATION N BAR 5522	CE	BW	WW	YW	MILK	TM
S A V NATIONAL ANTHEM 5740	S A V EMBLYNETTE 5483	COLEMAN DONNA 812	N BAR PRIMROSE 2424	•	2.6	46	81	30	53
A C DUKE GIRL 57	CAR TRACKER 305	KMK DONNA J311	D H D TRAVELER 6807						
	A C DUKE GIRL 330		BROOKS DONNA 319						

- Paternal brother to Lot 15 - BBC 931E.



Coleman Donna 812
Dam

17 BLAIR'S Caldwell 731E

BBC 731E 29 Mar 2017 1983802 BW: 84 ADJ WW: 824

SIRE		DAM		GENETICS					
BAR-E-L NATURAL LAW 52Y	S A V BISMARCK 5682	WAF ZORZAL 321U	BAR-E-L MAGNOLIA 143K	CE	BW	WW	YW	MILK	TM
BAR-E-L CALDWELL 9C	BAR-E-L MAGNOLIA 143K	REMINGTON LADY 234Y	SOUTHLAND THRILLER 83X	•	1.9	48	69	18	42
BAR-E-L BRIDE 121Z	SOUTHLAND THRILLER 83X	REMINGTON LADY 421U	DBRL 94T BRIDE 4W						
	TRES MARIAS 6301 ZORZAL		TRES MARIAS 6582 CUMELLEN 5632						
	SITZ ALLIANCE 9160		REMINGTON LADY 160P						

- Caldwell sons are heavy weaning weight bulls in a moderate calving ease package.
- Have a really good look at the unique pedigree in Blair's Caldwell 731E.
- Moderate calving ease.



PM Echo 8'16
Paternal sibling to 9C



- Natural Law, New Generation and S A V Density – enough said!



BBC 309A
Maternal Sister to Dam

18 BLAIR'S **Caldwel** 739E

BBC 739E 3 Apr 2017 1983806 BW: 92 ADJ WW: 761

SIRE	BAR-E-L NATURAL LAW 52Y	S A V BISMARCK 5682
	BAR-E-L CALDWELL 9C	BAR-E-L MAGNOLIA 143K
	BAR-E-L BRIDE 121Z	SOUTHLAND THRILLER 83X
		DBRL 94T BRIDE 4W
DAM	DUFF NEW GENERATION 6107	O C C GENESIS 872G
	BLAIR'S DELLA 525B	O C C DIXIE ERICA 814G
	DBRL 4336 DELLA 28S	S A V 004 DENSITY 4336
		CRESCENT CREEK EULA 120L

CE	BW	WW	YW	MILK	TM
•	5.2	54	81	19	46

19 BLAIR'S **Renown** 695E

BBC 695E 15 Mar 2017 2000763 BW: 99 ADJ WW: 719

SIRE	RITO 707 OF IDEAL 3407 7075	R R RITO 707
	S A V RENOWN 3439	IDEAL 3407 OF 1418 076
	S A V BLACKCAP MAY 4136	S A V 8180 TRAVELER 004
		S A V MAY 2397
DAM	S A V 004 DENSITY 4336	S A V 8180 TRAVELER 004
	DBRL 4336 DELLA 28S	S A V MAY 7238
	CRESCENT CREEK EULA 120L	CRESCENT CREEK CONVERTER 79J
		CRESCENT CREEK EULA 108Z

CE	BW	WW	YW	MILK	TM
•	3.9	56	95	21	49



DBRL 4336 Della 28S
Dam

- S A V Renown 3439 sons are some of the most sought after on the planet.
- Della 28S is no longer with us but her impact is still being felt.
- You can't have too much S A V Density in your cow herd.



Renown



20 RED BLAIR'S *Navigator* 37E

BBC 37E 11 Apr 2017 2016094 BW: 89 ADJ WW: 745

SIRE	RED NBAR NEGOTIATOR L21	RED NBAR VULCAN 507
	RED GCC NAVIGATOR 1233	RED NBAR KELLY 913
	RED LASA DIVIDE R519	RED PIE THUNDERBO 846
		RED PIE LASA DIVIDE 8107
DAM	RED JORD REDWOOD 72X	RED BRYLOR SDL REDWOOD 217S
	RED BLAIRS FANNY 87Z	RED TG LASSIE 55R
	RED MISS GFT 40T FANNY	RED PERKS CHATEAU 309R
		RED GFT RED FARGO 2N

- Blair's Navigator 37E will hit you very hard when you see him.
- We purchased GCC Navigator from the stall in Denver after he was slapped Reserve Champion Bull in Denver.
- Dark red, great foot and huge rib.
- **Selling full possession and 50% semen interest.**

US BOLT EPDS

CE	BW	WW	YW	MILK	TM
••	0.4	54	81	18	45



Red Blair's Navigator 37E



Red GCC Navigator 1233
Sire





Lot 21

21 RED BLAIR'S **Navigator** 23E

BBC 23E 6 Apr 2017 2016090 BW: 86 ADJ WW: 663

SIRE	RED NBAR NEGOTIATOR L21	RED NBAR VULCAN 507
	RED GCC NAVIGATOR 1233	RED NBAR KELLY 913
	RED LASA DIVIDE R519	RED PIE THUNDERBO 846
DAM	RED BLAIR'S DAYTONA 116U	RED FINE LINE MULBERRY 26P
	RED BLAIRS MOLLY 243Z	RED JCC LASS 41N
	RED GOLD-BAR MOLLY RA 130N	RED VGW RAMBLER 1000
		RED TOWAW MOLLY 65L

- Navigator was purchased to add outcross genetics with a great foot.
- Definitely the cowman's kind.

US BOLT EPDS

CE	BW	WW	YW	MILK	TM
••	0.1	49	75	12	36.5



Red Blair's Navigator 23E



Red Blair's Daytona 116U
Maternal Grand Sire



Lot 22

22 RED BLAIR'S **Ambush** 57E

BBC 57E 15 Apr 2017 1999295 BW: 84 ADJ WW: 822

SIRE	RED FLYING K AMBUSH 121U	RED SVR AMBUSH 59P
	RED SSS AMBUSH 771X	RED FLYING K BEAUTY 40R
	RED SSS JOE 369S	RED SSS SHIVER'N JOE 699P
DAM	RED BIEBER MAKE MIMI 7249	RED BJR MAKE MY DAY 981
	RED RX LADY NOLEN Y114	RED BIEBER SIRENA 6708
	RED RX LADY NOLEN W142	RED FINE LINE MULBERRY 26P
		RED LMF LIZ 1501

- It's always our goal to sell full siblings in our bull sale and this year we have a number of them in both colors.
- SSS Ambush semen is no longer available and we sold Nolen 114Y.
- Nolen 114Y earned a place in our donor pen after she raised a \$76,500 USD son in Denver and has never looked back.

US BOLT EPDS

CE	BW	WW	YW	MILK	TM
••	-0.3	54	84	27	54



Red SSS Ambush 771X
Sire



Red RX Lady Nolen Y114
Dam



Pure Power 2B
Full Sibling





BBC 2D
Maternal sibling to BBC 67E



BBC 603D
Maternal sibling to BBC 67E



BBC 4D
Maternal sibling to BBC 67E

23 RED BLAIR'S **Ambush** 67E

BBC 67E 17 Apr 2017 1999550 BW: 83 ADJ WW: 675

SIRE	RED FLYING K AMBUSH 121U	RED SVR AMBUSH 59P
	RED SSS AMBUSH 771X	RED FLYING K BEAUTY 40R
DAM	RED SSS JOE 369S	RED SSS SHIVER'N JOE 699P
	RED BIEBER MAKE MY DAY 7249	RED SSS KURUBA 842L
	RED RX LADY NOLEN Y114	RED BJR MAKE MY DAY 981
	RED RX LADY NOLEN W142	RED BIEBER SIRENA 6708
		RED FINE LINE MULBERRY 26P
		RED LMF LIZ 1501

US BOLT EPDS

CE	BW	WW	YW	MILK	TM
••	-0.3	54	84	27	54

- Full brother to Lot 22 - BBC 57E.

24 RED BLAIR'S **Sunberry** 560E

BBC 560E 9 Feb 2017 2010089 BW: 76 ADJ WW: 713

SIRE	RED MRLA 61X	RED MRLA ECONOMY 810
	RED SUNBERRY PRIVATE STOCK	RED MRLA MISS 580U
DAM	RED MRLA MISS 2475Z	RED BAR-E-L WARDEN 144W
	RED TWIN HERITAGE HUSTLE 25A	RED GARA DUCHESS 75P
	RED TER-RON BOBBIE 27C	RED HOWE HUSTLE 13X
	RED TER-RON BOBBIE 122X	RED TWIN HERITAGE CHER 293S
		RED THAT'LL DO UNBELIEVABLE 6U
		RED TER-RON BOBBIE 93T

US BOLT EPDS

CE	BW	WW	YW	MILK	TM
•••	-0.5	56	86	22	50

- Sunberry Private Stock was purchased to add color, calving ease and confirmation to our program.
- Bobbie 27C was our pick of the heifer group in the 2016 Ter-Ron Farms Bull Sale and Private Stock 560E is her first calf. Watch out for much more out of the young female.

25 RED BLAIR'S **Firestorm** 684D

BBC 684D 18 Sept 2016 2029164 BW: 62 ADJ WW: 662

SIRE	RED SIX MILE SAKIC 832S	RED SIX MILE AVIATOR 217P
	RED PZC TMAS FIRESTORM 1800 ET	RED SIX MILE SIERA 257P
DAM	RED GT CITA 4060	RED CITATION 138
	RED FINE LINE MULBERRY 26P	RED JMDF MISS LANA
	RED RED TIDE MARTINI 25W	RED COMPASS MULBERRY 449M
	RED JD LANN MARTA 130P	RED DUS FAYETTE 8G
		RED BRYLOR NEW TREND 22D
		RED BRYLOR MARTA 85J

US BOLT EPDS

CE	BW	WW	YW	MILK	TM
•••	-0.2	55	88	29	57

- Firestorm offspring are taking the breed by storm.
- This mating is the one and only for us as Martini 25W is deceased.
- This genetic mating is "Homozygous awesome."





26 RED BLAIR'S *Kargo* 900E

BBC 900E 3 Mar 2017 2076384 BW: 85 ADJ WW: 571

SIRE	RED RINGSTEAD KARGO 107M	RED COMPASS KARGO 83K
	RED RINGSTEAD KARGO 215U	RED GET-A-LONG MRS. YOUNG 095
	RED RINGSTEAD MS EQUAL 589P	RED SSS YUKON 440K
DAM	RED SIX MILE SAKIC 832S	RED SSS MISS EQUAL 495G
	RED PZC FIRELIGHT 048 ET	RED SIX MILE AVIATOR 217P
	RED GT CITA 4060	RED SIX MILE SIERA 257P
		RED CITATION 138
		RED JMDF MISS LANA

- Kargo sons have been a mainstay in our bull sales and for good reason. Dark red, wide based, excellent testicular growth, highly maternal and great udders.
- Match all that up with Firestorm's dam and Red Blair's Firestorm 900E is what you get. 900E hits you from every angle.

US BOLT EPDS

CE	BW	WW	YW	MILK	TM
••	0.1	58.5	88.5	20.5	50



Red Ringstead Kargo 215U
Sire



BBC 76X
Paternal sister to BBC 900E





27 RED BLAIR'S **Kargo** 62E

BBC 62E 17 Apr 2017 1999523 BW: 75 ADJ WW: 685

SIRE	RED RINGSTEAD KARGO 107M	RED COMPASS KARGO 83K
	RED RINGSTEAD KARGO 215U	RED GET-A-LONG MRS. YOUNG 095
	RED RINGSTEAD MS EQUAL 589P	RED SSS YUKON 440K
		RED SSS MISS EQUAL 495G
DAM	RED CRESCENT CREEK FRCHIEF 75L	RED FORSTER CHIEF 7182ET
	RED SOO LINE RHONDA 5109	RED CRESCENT CREEK DUCHESS 155
	RED GEIS RHODA 176'99	RED CR 17 PROOF 96G
		RED GEIS RHODA 35'93

- One of the last offspring from the great Soo Line Rhonda 109R. Rhonda is deceased and her absence will be noticeable in our donor pen.
- The maternal strength of Kargo combined with the power of Rhonda make this mating highly desirable.

US BOLT EPDS

CE	BW	WW	YW	MILK	TM
••	-0.2	51	75	23	49



TWG Tango
Paternal brother to BBC 62E



Red Soo Line Rhonda 5109
Dam



Red Blair's Bingo 581B
Sire

- These two Bingo sons are like peas in a pod.
- Smooth made, clean lines, capable of going with a group of cows and/or heifers.
- Lots of thickness.



Lot 28

28 RED JCC **Bingo** 36E

LEVI 36E 2 Apr 2017 1969930 BW: 85 ADJ WW: 735

SIRE	RED RINGSTEAD KARGO 215U	RED RINGSTEAD KARGO 107M
	RED BLAIR'S BINGO 581B	RED RINGSTEAD MS EQUAL 589P
DAM	RED WSP MS YANKEE 13T 12W	RED BRYLOR/WSP KARWEIK 1P
	RED WHEEL SIN CITY 43T	RED FINE LINE YANKEE 13T
	RED JCC PRIDE 16Y	RED NORTHLINE ATLANTIC CITY
	RED CASTLEMAIN PRIDE 554H	RED WHEEL PRIDE 16M
		RED MEM BARON 42E
		RED CASTLEMAIN SIERA 5C

US BOLT EPDS

CE	BW	WW	YW	MILK	TM
•••	0.4	50	80	23	48

29 RED JCC **Bingo** 24E

LEVI 24E 2 Mar 2017 1969938 BW: 80 ADJ WW: 645

SIRE	RED RINGSTEAD KARGO 215U	RED RINGSTEAD KARGO 107M
	RED BLAIR'S BINGO 581B	RED RINGSTEAD MS EQUAL 589P
DAM	RED WSP MS YANKEE 13T 12W	RED BRYLOR/WSP KARWEIK 1P
	RED SOO LINE POWER EYE 161X	RED FINE LINE YANKEE 13T
	RED JCC CHEYENNE 26B	RED COCKBURN RIBEYE 308U
	RED JCC MS RUBA 8W	RED TR LYNN 301R
		RED TER-RON PROWLER 833T
		RED JCC MS RUBA 17P

US BOLT EPDS

CE	BW	WW	YW	MILK	TM
•••	-0.7	48	77	20	44



Bingo Daughter

- A very nice low birth weight bull, with plenty of muscle and volume.
- Great disposition, a very good heifer bull candidate.



Lot 29





30 JCC **Seedstock** 23E

LEVI 23E 3 Feb 2017 1997504 BW: 85 ADJ WW: 660

SIRE	S A V REGISTRY 2831	RITO 707 OF IDEAL 3407 7075
	S A V SEEDSTOCK 4838	S A V MADAME PRIDE 0075
	S A V BLACKCAP MAY 4136	S A V 8180 TRAVELER 004
		S A V MAY 2397
DAM	SOO LINE MOTIVE 9016	HF KODIAK 5R
	CCCJ ERROLLINE 2Y	TLA BEAUTY 5R
	BLACK RIDGE ERROLLINE 24S	B/R NEW FRONTIER 095
		BLACK RIDGE ERROLLINE 24K

CE	BW	WW	YW	MILK	TM
•	3.0	54	95	19	46

- Both 26E and 23E are flush brothers out of CCCJ Errolline 2Y by the herd bull S A V Seedstock 4838, whose dam is the iconic Blackcap May 4136, whose progeny have generated over 9.5 million in sales for Schaff's.
- These two bulls have great muscle shape and structural soundness.
- A tremendous amount of maternal strength in these two bulls.



S A V Seedstock 4838
Sire



CCCJ Errolline 2Y
Dam



31 JCC **Seedstock** 26E

LEVI 26E 4 Mar 2017 1997502 BW: 88 ADJ WW: 714

SIRE S A V REGISTRY 2831
S A V SEEDSTOCK 4838
 S A V BLACKCAP MAY 4136

DAM SOO LINE MOTIVE 9016
CCCJ ERROLLINE 2Y
 BLACK RIDGE ERROLLINE 24S

RITO 707 OF IDEAL 3407 7075
 S A V MADAME PRIDE 0075
 S A V 8180 TRAVELER 004
 S A V MAY 2397

HF KODIAK 5R
 TLA BEAUTY 5R
 B/R NEW FRONTIER 095
 BLACK RIDGE ERROLLINE 24K

CE	BW	WW	YW	MILK	TM
••	3.0	54	95	19	46

• Full brother to Lot 30 - LEVI 23E.

32 CCCJ **Eclipse** 17E

CCCJ 17E 18 Feb 2017 1969950 BW: 80 ADJ WW: 675

SIRE S A V REGISTRY 2831
S A V SEEDSTOCK 4838
 S A V BLACKCAP MAY 4136

DAM SOO LINE LEGACY 7019
SOO LINE ROSEBUD 2150
 SOO LINE ROSEBUD 9312

RITO 707 OF IDEAL 3407 7075
 S A V MADAME PRIDE 0075
 S A V 8180 TRAVELER 004
 S A V MAY 2397

HF KODIAK 5R
 GEIS PRIDE 114'99
 SOO LINE YELLOWSTONE 6344
 GEIS ROSEBUD 88'04

CE	BW	WW	YW	MILK	TM
••	2.5	53	93	20	46

- This Seedstock son is a big, free striding bull with a ton of muscle and shape to him
- Sound footed with a real herd bull look to him.
- Look him up on sale day, you won't be disappointed.



S A V Seedstock 4838
Sire



Soo Line Motive 9016

33 CCCJ **Seedhawk** 25E

CCCJ 25E 3 Mar 2017 1969955 BW: 93 ADJ WW: 727

SIRE S A V REGISTRY 2831
S A V SEEDSTOCK 4838
 S A V BLACKCAP MAY 4136

DAM RING CREEK BIG PAYOUT 41Z
MVF DAISY 18B
 MVF DAISY 252X

RITO 707 OF IDEAL 3407 7075
 S A V MADAME PRIDE 0075
 S A V 8180 TRAVELER 004
 S A V MAY 2397

CONNEALY CONSENSUS 7229
 LADY OF RING CREEK 10W
 NORSEMAN FRONTIER 2'07
 MVF DAISY 17E

CE	BW	WW	YW	MILK	TM
•	4.3	54	97	23	50

- Another good Seedstock bull out of a beautiful Payout daughter with an impeccable udder.
- Deep sided, soft made, will sire those extra pounds you need to increase your ROI.

34 CCCJ **Payroll** 67E

CCCJ 67E 25 Apr 2017 1969945 BW: 77 ADJ WW: 760

SIRE RING CREEK BIG PAYOUT 41Z
JCC PREFERRED 34B
 CCCJ ERROLLINE 17Z

DAM TC ABERDEEN 759
CCCJ TIBBIE 1Y
 MVF TIBBIE 460U

CONNEALY CONSENSUS 7229
 LADY OF RING CREEK 10W
 S A V BISMARCK 5682
 CCCJ ERROLLINE 2W

C R A BEXTOR 872 5205 608
 TC BLACKBIRD 4034
 MVF DATELINE 345R
 MVF TIBBIE 177N

CE	BW	WW	YW	MILK	TM
•••	0.0	48	79	26	50

- A real calving ease bull.
- Female side has very predictable low birth weights.
- The sire Preferred 34B we retained for our own use but unfortunately lost him after only two breeding seasons.



Lot 35

35 JCC **Global** 18E

LEVI 18E 22 Feb 2017 2020116 BW: 90 ADJ WW: -

SIRE R B ACTIVE DUTY 0010X
KOUPALS B&B ATLAS 4061
 B&B TESS 9045

DAM SOO LINE MOTIVE 9016
CCCJ ERROLLINE 2Y
 BLACK RIDGE ERROLLINE 24S

LCC NEW STANDARD
 B A LADY 6807 305
 CONNEALY THUNDER
 B&B TESS 3055

HF KODIAK 5R
 TLA BEAUTY 5R
 MVF DATELINE 345R
 BLACK RIDGE ERROLLINE 24K

CE	BW	WW	YW	MILK	TM
•	1.8	53	100	20	46

- A big powerful, deep sided bull sired by the Genex sire, Atlas and out of a beautiful Motive daughter.
- The dam to this bull is also the dam to our other two black bulls, Lots 30 and 31.
- The dam 2Y was the ideal Angus female, chisel fronted, deep sided, broad hipped, lots of power with a perfect udder. She was Reserve Senior Champion Female at Agribition in 2016.

36 CCCJ Noteworthy 5F

CCCJ 5F 3 Feb 2018 2041254 BW: 89 ADJ WW: 700

SIRE	S A V HARVESTOR 0338	S A V HERITAGE 6295
	S A V INTERNATIONAL 2020	S A V EMBLYNETTE 7749
	S A V EMBLYNETTE 5483	S A V 8180 TRAVELER 004
DAM	SOO LINE MOTIVE 9016	HF KODIAK 5R
	CCCJ BEAUTY 8B	TLA BEAUTY 5R
	SIX MILE REAL BEAUTY 803U	S A V NET WORTH 4200
		WAT-CHA STUNNING BEAUTY 5S

CE	BW	WW	YW	MILK	TM
••	3.8	54	94	22	49

- A very stylish International son, soft made with a lot of hip.
- Dam is a typical Motive daughter, wedge shaped, deep sided, big hipped with a perfect udder.
- A very complete calf.



S A V International 2020
Sire



Soo Line Motive 9016
Sire



Lot 37

37 CCCJ Motive 4F

CCCJ 4F 3 Feb 2018 2041344 BW: 78 ADJ WW: 767

SIRE	HF KODIAK 5R	SANDY BAR ADVANTAGE 43M
	SOO LINE MOTIVE 9016	WILBAR RUBY 955N
	TLA BEAUTY 5R	RR 7407 RAINMAKER 2154
DAM	MAR INNOVATION 251	TERRLENE BEAUTY 35F
	CCCJ PRIDE 12D	CONNEALY IMPRESSION
	MVF PRIDE 4A	MAR FINAL KAHUNA 856
		SOUTHLAND THRILLER 83X
		MVF PRIDE 302T

CE	BW	WW	YW	MILK	TM
•••	1.9	52	88	21	47

- This Motive son is worth a second look.
- Tremendous length, soft made, great disposition, correct from every angle
- Low birth weight with great performance.
- His two year old dam is a beautiful Innovation daughter . The grand-dam, 4A was shown very successfully both as a calf and a yearling.



Musgrave Sky High 1535
Sire

- Sired by the high selling bull from the 2016 Musgrave Angus Bull Sale.
- This calf is wide based, strong topped, structurally sound.
- Maybe the best part of SkyFall 9F is his dam, 13X. This Kodiak daughter is a no miss female and consistently produces my top calves each and every year.
- The strength of any herd comes from the power of the females and this bull's dam is one of the best.



Lot 38

38 CCCJ Skyfall 9F

CCCJ 9F 13 Feb 2018 2041244 BW: 89 ADJ WW: 724

SIRE	MUSGRAVE BIG SKY	CONNEALY EARNAN 076E
	MUSGRAVE SKY HIGH 1535	SAV PRIMROSE 7861
	FLAG QUEEN W 00649	S A V 004 DENSITY 4336
		PLATTEMERE QUEEN W 660
DAM	HF KODIAK 5R	SANDY BAR ADVANTAGE 43M
	SOO LINE ROSEBUD 0013	WILBAR RUBY 955N
	SOO LINE ROSEBUD 8210	SOO LINE YELLOWSTONE 6344
		TLA ROSEBUD 4R

CE	BW	WW	YW	MILK	TM
••	1.6	54	93	20	47

39 CCCJ Skyline 11F

CCCJ 11F 18 Feb 2018 2041222 BW: 83 ADJ WW: 711

SIRE	MUSGRAVE BIG SKY	CONNEALY EARNAN 076E
	MUSGRAVE SKY HIGH 1535	SAV PRIMROSE 7861
	FLAG QUEEN W 00649	S A V 004 DENSITY 4336
		PLATTEMERE QUEEN W 660
DAM	HF TIGER 5T	HF KODIAK 5R
	MVF BARANDA 50X	HF ECHO 84R
	MVF BARANDA 154U	MVF FRONTIER 25P
		MVF BARANDA 82S

CE	BW	WW	YW	MILK	TM
•••	0.5	52	93	19	45

- A nice light birth weight son of Sky High.
- The Tiger dam consistently sires light birth weight calves. She is an easy fleshing, fault free cow that you know will produce well into her teens. The average birth weight on her seven calves to date has been 80 lbs.
- I have two daughters of 50X in my herd and her son, Freestyle, is a bull we use exclusively on heifers.



Lot 39

- A very balanced calf, weaning and yearling EPDs put him in the top 5% and 3% of the breed.
- Great muscle pattern with lots of hair.
- The sire, Rito 6313, comes from the well-respected Arntzen Angus of Montana, offering an outcross opportunity.
- Dam combines the genetics of the maternal greats, Pioneer and Net Worth.



40 CCCJ **Rito** 104F

CCCJ 104F 23 Feb 2018 2041229 BW: 67 ADJ WW: 762

SIRE
 A A R RITO 1163
A A R RITO 6313
 A A R BLACKBIRD 9081

DAM
 S A V PIONEER 7301
MVF TIBBIE 85X
 MVF TIBBIE 169U

BROOKS RITO 6220
 A A R NANCY 6093
 A A R TEN X 7008 S A
 A A R BLACKBIRD 27

S A V FINAL ANSWER 0035
 S A V BLACKBIRD 5297
 S A V NET WORTH 4200
 MVF TIBBIE 123M

CE	BW	WW	YW	MILK	TM
••	2.9	63	115	24	55

41 CCCJ **Lotto Mac** 15F

CCCJ 15F 4 Mar 2018 2067014 BW: 86 ADJ WW: -

SIRE
 BARSTOW CASH
BSF HOT LOTTO 1401
 BSF PRINCESS EL CAP W2

DAM
 S A V NET WORTH 4200
WERNER BLACK ANGEL 1299
 CLEARWATER BLACK ANGEL 395

SITZ DASH 10277
 BARSTOW QUEEN W16
 SILVEIRAS EL CAPITAN 6510
 B S F PRINCESS TCF N2

S A V 8180 TRAVELER 004
 S A V MAY 2410
 B/R NEW FRONTIER 095
 CLEARWATER BLACK ANGEL 1728

CE	BW	WW	YW	MILK	TM
••	1.5	60	110	26	56

- A rare genetic opportunity here.
- Sired by BSF Hot Lotto 1401, the predominant sire for Hamilton Farms and the dam, Werner Black Angel is one of the feature donors for Bohrsen Marketing.
- Weaning and Yearling EPDs rank him in the top 10% and 5% of the breed.
- A real solid individual, real hard to find fault with.





Soo Line Locomotive 1403
Sire

42 BLAIR'S Locomotive 302E

BBC 302E 29 Jan 2017 1981475 BW: 81 ADJ WW: 696

SIRE		DAM		GENETICS					
SOO LINE MOTIVE 9016	HF KODIAK 5R	DUFF NEW GENERATION 6107	O C C GENESIS 872G	CE	BW	WW	YW	MILK	TM
SOO LINE LOCOMOTIVE 1403	TLA BEAUTY 5R	BLAIRS TIBBIE 225Z	O C C DIXIE ERICA 814G	••	2.2	44	78	24	46
SHADY BROOK EVERENTENSE 2039	S A V FINAL ANSWER 0035	MVF TIBBIE 60M	VERMILION DATELINE 7078						
	SCR EVERELDA ENTENSE 748		MVHF TIBBIE 39B						

- Locomotive 1403 is well known for raising highly efficient cattle with tremendous rib shape.
- Females will have great udders and excellent pelvic dimension.
- Moderate calving ease can be expected from Locomotive genetics.
- **Owned with Rob Saik.**



Duff New Generation 6107
Grandsire of 302E

43 BLAIR'S Locomotive 309E

BBC 309E 27 Mar 2017 1981745 BW: 89 ADJ WW 716

SIRE		DAM		GENETICS					
SOO LINE MOTIVE 9016	HF KODIAK 5R	DUFF NEW GENERATION 6107	O C C GENESIS 872G	CE	BW	WW	YW	MILK	TM
SOO LINE LOCOMOTIVE 1403	TLA BEAUTY 5R	BLAIRS DYNAMINT 65X	O C C DIXIE ERICA 814G	•	2.8	37	64	22	41
SHADY BROOK EVERENTENSE 2039	S A V FINAL ANSWER 0035	RED RIVERDALE DYNAMINT 340L	RED SSS BOMBER 789G						
	SCR EVERELDA ENTENSE 748		RED RIVERDALE DYNAMINT 113G						

- Paternal brother to Lot 42 - BBC 302E and Lot 44 - BBC 535E.
- **Owned with Dale MacKay.**

44 BLAIR'S Locomotive 535E

BBC 535E 28 Jan 2017 1974585 BW: 86 ADJ WW: 831

SIRE		DAM		GENETICS					
SOO LINE MOTIVE 9016	HF KODIAK 5R	SANKEYS JUSTIFIED 101	SANKEYS LAZER 609 OF 6N	CE	BW	WW	YW	MILK	TM
SOO LINE LOCOMOTIVE 1403	TLA BEAUTY 5R	J SQUARE S ANNIE K 503C	SANKEYS ERICA 525	••	2.7	55	94	22	50
SHADY BROOK EVERENTENSE 2039	S A V FINAL ANSWER 0035	RNRF GRACE 092X	RNRF UNLIMITED BOND 227U						
	SCR EVERELDA ENTENSE 748		DOUBLE AA ANNIE K 93'08						

- Paternal brother to Lot 42 - BBC 302E and Lot 43 - BBC 309E.

CHECK OUT THE

*Platinum
Bull
Warranty*

ON PAGE 39

45 BLAIR'S Free Style 340E

BBC 340E 12 Apr 2017 1981749 BW: 75 ADJ WW: 625

SIRE	S A V BRAND NAME 9115		S A V BISMARCK 5682			
	CCCJ FREE STYLE 16B		S A V BLACKCAP MAY 5530			
	MV F BARANDA 50X		HF TIGER 5T			
DAM	C J PRESTIGE 25T		H S A F BANDO 1961			
	BLAIRS FAITH 609Y		C J BLACKBIRD 11P			
	RED BAKERS FAITH 8L		RED BAKERS CENTURY			
	RED BAKERS FAITH 8L		RED BROX FAITH 17C			
	CE	BW	WW	YW	MILK	TM
	•••	0.1	37	67	17	36

- Freestyle is used specifically to raise sleep easy calving ease sons.
- Great cow families support both Lot 45 and 46.

46 BLAIR'S Free Style 341E

BBC 341E 14 Apr 2017 1981451 BW: 75 ADJ WW: 693

SIRE	S A V BRAND NAME 9115		S A V BISMARCK 5682			
	CCCJ FREE STYLE 16B		S A V BLACKCAP MAY 5530			
	MV F BARANDA 50X		HF TIGER 5T			
DAM	HF KODIAK 5R		SANDY BAR ADVANTAGE 43M			
	BLAIR'S MAYFLOWER 330B		WILBAR RUBY 955N			
	CARRUTHERS MAYFLOWER 43N		VERMILION DATELINE 7078			
	CARRUTHERS MAYFLOWER 43N		CARRUTHERS MAYFLOWER 12J			
	CE	BW	WW	YW	MILK	TM
	•••	0.4	49	84	18	43

- Paternal brother to Lot 45 - BBC 340E.



Carruthers Mayflower 43N
Dam of 638E

47 BLAIR'S Believe 500E

BBC 500E 1 Jan 2017 1990436 BW: 82 ADJ WW: 696

SIRE	YOUNG DALE XCALIBER 32X		YOUNG DALE KNOCK OUT 134U			
	YOUNG DALE BELIEVE 46B		BROOKMORE TIBBIE 222T			
	YOUNG DALE GRACE 126Z		YOUNG DALE PANARAMA 66T			
DAM	S A V BULLET 0473		S A V BISMARCK 5682			
	REHORST JENNIFER 324A		S A V EMBLYNETTE 7566			
	JL MS JENNIFER 0120		S A V CARBON COPY 7664			
	JL MS JENNIFER 0120		HOWE MS JENNIFER 120N			
	CE	BW	WW	YW	MILK	TM
	•	1.8	49	81	12	37

- A very nice Rehorst bred cow supports this Young Dale Believe son.
- Cowman's kind.

48 BLAIR'S GQ 638E

BBC 638E 5 Mar 2017 2027393 BW: 85 ADJ WW: 642

SIRE	SILVEIRAS STYLE 9303		GAMBLES HOT ROD			
	SILVEIRAS S SIS GQ 2353		SILVEIRAS ELBA 2520			
	K N C CABIN CREEK SANDY 804		B C LOOKOUT 7024			
DAM	VERMILION DATELINE 7078		K N C CABIN CREEK SANDY			
	CARRUTHERS MAYFLOWER 43N		CONNEALY DATELINE			
	CARRUTHERS MAYFLOWER 12J		VERMILION BLACKBIRD 5044			
	CARRUTHERS MAYFLOWER 12J		R R SCOTCHCAP 9440			
	CE	BW	WW	YW	MILK	TM
	•	3.4	47	77	20	44

- The Mayflower 43N has sired more sale bulls for us than any other donor.





Red Blair's Bingo 581B
Sire

49 RED BLAIR'S **Bingo** 553E

BBC 553E 4 Feb 2017 1974587 BW: 72 ADJ WW: 645

SIRE
RED RINGSTEAD KARGO 215U
RED BLAIR'S BINGO 581B
RED WSF MS YANKEE 13T 12W

DAM
RED CORNER CREEK CASH 2R
RED BLAIR'S CHETA 70C
RED JCC CHETA 50P

RED RINGSTEAD KARGO 107M
RED RINGSTEAD MS EQUAL 589P
RED BRYLOR/WSP KARWEIK 1P
RED FINE LINE YANKEE 13T
RED PIE ATLANTIC 2204
RED NORTHLINE PRINCESS 59L
RED TER-RON MAMBO 28K
RED JCC CHARO 19K

US BOLT EPDS

CE	BW	WW	YW	MILK	TM
•••	-0.5	47	72	20	48

- The \$60,000 USD Red Blair's Bingo 581B adds calving ease and style to his offspring.
- Expect structural soundness and great udders from females off these two Bingo sons.

50 RED BLAIR'S **Bingo** 562E

BBC 562E 10 Feb 2017 1974588 BW: 90 ADJ WW: 806

SIRE
RED RINGSTEAD KARGO 215U
RED BLAIR'S BINGO 581B
RED WSF MS YANKEE 13T 12W

DAM
RED RSL REDMAN 208Z
RED PASQUIA BARBARA 42C
RED PASQUIA BARBARA 67Z

RED RINGSTEAD KARGO 107M
RED RINGSTEAD MS EQUAL 589P
RED BRYLOR/WSP KARWEIK 1P
RED FINE LINE YANKEE 13T
RED RMJ REDMAN 1T
RED RSL COUNTESS 70U
RED BLAIR'S INTEGRITY 29U
RED PASQUIA BARBARA 28R

US BOLT EPDS

CE	BW	WW	YW	MILK	TM
••	1.9	59	92	22	52

- Paternal brother to Lot 49 - BBC 553E.



Red Ter-Ron Santana 73C
Sire to BBC 665E

51 RED BLAIR'S **Santana** 665E

BBC 665E 10 Mar 2017 1974582 BW: 90 ADJ WW: 833

SIRE
RED TER-RON PARKER 34A
RED TER-RON SANTANA 73C
RED TER-RON BRANDY 162Y

DAM
RED CORNER CREEK CASH 2R
RED KENRAY LAKOTO 30A
RED AQUA HOLLOW LA SENZA 9R

TER-RON PARK PLACE 18Y
RED TER-RON DIAMOND MIST 164Y
RED U-2 BIG LEAGUE 544R
RED TER-RON BRANDY 211M
RED PIE ATLANTIC 2204
RED NORTHLINE PRINCESS 59L
RED STEWART SENSATION 9L
RED CUMNOCK LAKOTA 41G

US BOLT EPDS

CE	BW	WW	YW	MILK	TM
••	1.8	63	95	13	45

- Santana is a Ter-Ron Farms bull we bought with Santiago Debernardi from Argentina. He was added to our sire line up to add WW and efficiency in a moderate package.
- The dam to Santana is a model cow at Ter-Ron Farms.
- The Red Blair's Santana 602E is the highest WW bull in the entire offering.
- Check out the rib shape on these paternal siblings.

52 RED BLAIR'S **Santana** 602E

BBC 602E 20 Feb 2017 1990212 BW: 87 ADJ WW: 938

SIRE
RED TER-RON PARKER 34A
RED TER-RON SANTANA 73C
RED TER-RON BRANDY 162Y

DAM
RED RRA CONQUEST 288
RED BLAIR'S DOLL 543B
RED TFCC DOLL 202Z

TER-RON PARK PLACE 18Y
RED TER-RON DIAMOND MIST 164Y
RED U-2 BIG LEAGUE 544R
RED TER-RON BRANDY 211M
RED HXC CONQUEST 4405P
RED RRA RACHEL 246 746
RED FINE LINE MULBERRY 26P
RED THREE FIRES DEUCES DOLL60I

US BOLT EPDS

CE	BW	WW	YW	MILK	TM
••	0.4	73	113	20	57

- Paternal sibling to Lot 51 - BBC 665E and Lot 53 - BBC 13E.

53 RED BLAIR'S **Santana** 13E

BBC 13E 1 Apr 2017 1981482 BW: 90 ADJ WW: 777

SIRE
RED TER-RON PARKER 34A
RED TER-RON SANTANA 73C
RED TER-RON BRANDY 162Y

DAM
RED NBAR HAMLEY S913
RED RRA MISS MULBERRY T82 120
RED MFIN MULBERRY T82

TER-RON PARK PLACE 18Y
RED TER-RON DIAMOND MIST 164Y
RED U-2 BIG LEAGUE 544R
RED TER-RON BRANDY 211M
RED PIE BILLINGS 487
RED NBAR KELLY 913
RED FINE LINE MULBERRY 26P
RED MFIN MISS CANYON M68

US BOLT EPDS

CE	BW	WW	YW	MILK	TM
•	1.8	63	91	12	44

- Paternal sibling to Lot 51 - BBC 665E and Lot 52 - BBC 602E.



Red Brylor Priscilla 67W
Dam

- Signature semen is virtually non-existent and progeny are highly sought after.
- If you want bull with a titch more frame and more length of body, check out these sons.
- The Priscilla 67W continues to be a force in our donor pen.



Signature

54 RED BLAIR'S **Signature** 50E

BBC 50E 14 Apr 2017 1999572 BW: 85 ADJ WW: 768

SIRE RED SIX MILE GRAND SLAM 130Z
RED SIX MILE SIGNATURE 295B
RED SELMA OF SIX MILE 358X

DAM RED BRYLOR SDL RICHTER 212R
RED BRYLOR PRISCILLA 67W
RED BRYLOR PRISCILLA 304S

RED VGW GAME PLAN 816
RED SIX MILE REBECCA 216X
RED SIX MILE UNLEASHED 595U
RED RSL MISS SELMA 384F

RED BRYLOR SDL STALLION 150N
RED XXX LAKME 70M
RED BRYLOR NEW TREND 22D
RED WIL-SEL PRISCILLA R. 21K

US BOLT EPDS

CE	BW	WW	YW	MILK	TM
••	2.4	59	92	22	52

55 RED BLAIR'S **Signature** 592E

BBC 592E 18 Feb 2017 1974589 BW: 91 ADJ WW: 803

SIRE RED SIX MILE GRAND SLAM 130Z
RED SIX MILE SIGNATURE 295B
RED SELMA OF SIX MILE 358X

DAM RED SMW SMACK 31U
RED WRAZ MARTA 42Y
RED TOPLINE MARTA 807

RED VGW GAME PLAN 816
RED SIX MILE REBECCA 216X
RED SIX MILE UNLEASHED 595U
RED RSL MISS SELMA 384F

RED LAZY MC SMASH 7S
RED D-BAR VALENTINE 3M
RED FINE LINE MULBERRY 26P
RED VARA MARTA 103J

US BOLT EPDS

CE	BW	WW	YW	MILK	TM
•	0.8	58	89	25	54

- The Marta 42Y donor is a picture perfect donor that now works at Larry Hafer's.
- Paternal brother to Lot 54 - BBC 50E.



Marta

56 RED BLAIR'S **Signature** 47E

BBC 47E 13 Apr 2017 1999299 BW: 89 ADJ WW: 733

SIRE	RED SIX MILE GRAND SLAM 130Z	RED VGW GAME PLAN 816
	RED SIX MILE SIGNATURE 295B	RED SIX MILE REBECCA 216X
DAM	RED SELMA OF SIX MILE 358X	RED SIX MILE UNLEASHED 595U
	RED RINGSTEAD KARGO 215U	RED RSL MISS SELMA 384F
	RED BLAIRS PRICILLA 44Z	RED RINGSTEAD KARGO 107M
	RED BRYLOR PRISCILLA 67W	RED RINGSTEAD MS EQUAL 589P
		RED BRYLOR SDL RICHTER 212R
		RED BRYLOR PRISCILLA 304S

US BOLT EPDS

CE	BW	WW	YW	MILK	TM
•	1.7	62	95	20	51

- Red Blairs Priscilla 44Z genetics are the most sought after in our donor pen.
- The most recent flush on 44Z sold for \$22,000 CAD.

57 RED BLAIR'S **Legacy** 546E

BBC 546E 31 Jan 2017 1999620 BW: 95 ADJ WW: 562

SIRE	RED LAZY MC EYE SPY 64Y	LAZY MC LOOKOUT 37U
	RED WPRA LEGACY A-314	RED LAZY MC GOLD DESIGN 68U
DAM	RED WPRA EVERLEDA ENTENSE 610	RED BFCK CHEROKEE CNYN 4912
	RED TER-RON MAMBO 28K	ER EVERLEDA ENTENSE P578
	RED JCC CHETA 50P	RED YY RED KNIGHT 640F
	RED JCC CHARO 19K	RED ALDER ABG STAR DUST 8G
		RED SSS BOMBER 907G
		RED JCC CHETA 2F

US BOLT EPDS

CE	BW	WW	YW	MILK	TM
•	1.4	58	85	23	52

- The last of the Cheta 50P.
- Legacy sons have been very popular at Lazy MC.



Red Blairs Pricilla 44Z
Dam of 47E



Red Blair's Larkaba 17T
Dam of 673D

58 RED BLAIR'S **Encore** 56E

BBC 56E 15 Apr 2017 1981494 BW: 91 ADJ WW: 704

SIRE	RED COCKBURN RIBEYE 308U	RED BAR-E-L RIBEYE 103R
	RED COCKBURN ENCORE 106Y	RED WILBAR CORA 443P
DAM	RED COCKBURN MS BOOT JACK 27N	RED SSS BUST'N 596F
	RINGSTEAD DAWSON 717T	RED COCKBURN MS BOOT JACK 86L
	RED BLAIRS LARKABA 101Y	RED RINGSTEAD DAWSON 209R
	RED BLAIR'S LARKABA 17T	GET-A-LONG ELBA 705
		RED SOUTHLAND ENERGIZER 100R
		RED BAR-E-L LARKABA 23R

US BOLT EPDS

CE	BW	WW	YW	MILK	TM
•	1.5	48	74	26	50

- Encore 106Y continues to raise the cowman's kind.
- The Larkaba 101Y dam is also the granddam to the \$42,000 Red Double B Backroads 2C.
- **Owned with Bob Bergen.**

59 RED BLAIR'S **Ironhide** 673D

BBC 673D 10 Sept 2016 2029111 BW: 88 ADJ WW: 657

SIRE	RED SIX MILE SAKIC 832S	RED SIX MILE AVIATOR 217P
	RED WRIGHTS 832S IRON HIDE 4Z	RED SIX MILE SIERA 257P
DAM	RED BWB FAYE 48N OF TREND	RED BRYLOR NEW TREND 22D
	RED SOUTHLAND ENERGIZER 100R	RED BWB FAYE 77'00 OF 10H
	RED BLAIR'S LARKABA 17T	RED NORTHLINE EQUALIZER 189N
	RED BAR-E-L LARKABA 23R	RED SOUTHLAND HEATHER 131N
		RED YY RAMBLER 322N
		RED BAR-E-L LARKABA 72N

US BOLT EPDS

CE	BW	WW	YW	MILK	TM
••	-0.2	45	68	27	61

- Check out the Red Blair's Larkaba 17T dam. We currently own the dam with Rust Mountain View Ranch in Mercer, ND.
- Iron Hide 4Z was our \$54,000 Red Round Up purchase that has really added calving ease into his offspring.



60 RED BLAIR'S Sunberry 5E

BBC 5E 27 Feb 2017 2005346 BW: 88 ADJ WW: 799

SIRE	RED MRLA 61X	RED MRLA ECONOMY 810
	RED SUNBERRY PRIVATE STOCK	RED MRLA MISS 580U
	RED MRLA MISS 2475Z	RED BAR-E-L WARDEN 144W
DAM	RED RINGSTEAD KARGO 215U	RED GARA DUCHESS 75P
	RED BLAIR'S CHETA 36C	RED RINGSTEAD KARGO 107M
	RED BLAIRS CHETA 39Z	RED RINGSTEAD MS EQUAL 589P
		RED TER-RON REALDEAL 01W
		RED JCC CHETA 50P

• Dark red, calving ease sire with a big WW.

US BOLT EPDS

CE	BW	WW	YW	MILK	TM
••	2.5	67	101	17	51

61 RED BLAIR'S Signature 678D

BBC 678D 13 Sept 2016 2039305 BW: 83 ADJ WW: 707

SIRE	RED SIX MILE GRAND SLAM 130Z	RED VGW GAME PLAN 816
	RED SIX MILE SIGNATURE 295B	RED SIX MILE REBECCA 216X
	RED SELMA OF SIX MILE 358X	RED SIX MILE UNLEASHED 595U
DAM	RED DWAJO GLADIATOR 32L	RED RSL MISS SELMA 384F
	RED SOO LINE COUNTESS 6409	RED BLUE SPRUCE ZOOK 50H
	RED JCC COUNTESS 14G	RED DWAJO SUPERIOR 4H
		RED TOWARDS 2000 14D
		RED JCC COUNTESS 1E

US BOLT EPDS

CE	BW	WW	YW	MILK	TM
••	-0.5	46	74	24	47

• Expect calving ease and calves with a great look and hair coat.

62 BLAIR'S Santana 675E

BBC 675E 11 Mar 2017 2004663 BW: 97 ADJ WW: 647

SIRE	RED TER-RON PARKER 34A	TER-RON PARK PLACE 18Y
	RED TER-RON SANTANA 73C	RED TER-RON DIAMOND MIST 164Y
	RED TER-RON BRANDY 162Y	RED U-2 BIG LEAGUE 544R
DAM	SOO LINE LOCOMOTIVE 1403	RED TER-RON BRANDY 211M
	BLAIR'S UPTOWN GIRL 373B	SOO LINE MOTIVE 9016
	NLC UPTOWN GIRL 19U	SHADY BROOK EVERENTENSE 2039
		SCHURRTOP MC 2500
		DOUBLE AA BELLA 31'05

CE	BW	WW	YW	MILK	TM
•	3.8	28	56	15	29

• This pedigree reads efficiency, efficiency, efficiency.





Red Fine Line Mulberry 26P



S A V Net Worth 4200

63 BLAIR'S **Renown** 303E

BBC 303E 13 Feb 2017 1981432 BW: 82 ADJ WW: 692

SIRE	RED U-2 RECKONING 149A	RED U-2 RECON 192Y
	RED U-2 RENOWN 193C	RED U-2 ANEXA 271Y
	RED U-2 ENVIOUS 147X	RED U-2 DYNAMO 7021T
		RED U-2 ENVIOUS 216M
DAM	RED BLAIR'S DAYTONA 116U	RED FINE LINE MULBERRY 26P
	BLAIRS HEROINE 353Y	RED JCC LASS 41N
	MVF HEROINE 163U	S A V NET WORTH 4200
		MVF HEROINE 19P

CE	BW	WW	YW	MILK	TM
•	4.0	40	62	23	43

- Here is the one for the commercial man that needs an outcross pedigree in a black hide.
- Performance throughout this pedigree.

65 BLAIR'S **Mulberry** 526E

BBC 526E 21 Jan 2017 2000947 BW: 92 ADJ WW: 783

SIRE	RED COMPASS MULBERRY 449M	RED HR RAMBO ET 91K
	RED FINE LINE MULBERRY 26P	RED BRYLOR MISS ROC 20H
	RED DUS FAYETTE 8G	RED SILVEIRAS REDFORD
		RED MC DOUGALL FAYETTE 59A
DAM	S A V NET WORTH 4200	S A V 8180 TRAVELER 004
	LLB BLACKBIRD 825U	S A V MAY 2410
	REMITALL BLACKBIRD 648R	REMITALL MERCEDES 146M
		LLB BLACKBIRD 330L

CE	BW	WW	YW	MILK	TM
•	1.8	49	88	27	52

- Full brother to Lots 64, 66-68.

66 BLAIR'S **Mulberry** 344E

BBC 344E 17 Apr 2017 2027392 BW: 91 ADJ WW: 776

SIRE	RED COMPASS MULBERRY 449M	RED HR RAMBO ET 91K
	RED FINE LINE MULBERRY 26P	RED BRYLOR MISS ROC 20H
	RED DUS FAYETTE 8G	RED SILVEIRAS REDFORD
		RED MC DOUGALL FAYETTE 59A
DAM	S A V NET WORTH 4200	S A V 8180 TRAVELER 004
	LLB BLACKBIRD 825U	S A V MAY 2410
	REMITALL BLACKBIRD 648R	REMITALL MERCEDES 146M
		LLB BLACKBIRD 330L

CE	BW	WW	YW	MILK	TM
•	1.8	49	88	27	52

- Full brother to Lots 64, 65, 67 and 68.

64 BLAIR'S **Mulberry** 357E

BBC 357E 28 Apr 2017 1999585 BW: 86 ADJ WW: 822

SIRE	RED COMPASS MULBERRY 449M	RED HR RAMBO ET 91K
	RED FINE LINE MULBERRY 26P	RED BRYLOR MISS ROC 20H
	RED DUS FAYETTE 8G	RED SILVEIRAS REDFORD
		RED MC DOUGALL FAYETTE 59A
DAM	S A V NET WORTH 4200	S A V 8180 TRAVELER 004
	LLB BLACKBIRD 825U	S A V MAY 2410
	REMITALL BLACKBIRD 648R	REMITALL MERCEDES 146M
		LLB BLACKBIRD 330L

CE	BW	WW	YW	MILK	TM
•	1.8	49	88	27	52

- Five full siblings to the gorgeous \$30,000 USD Blair's Blackbird 107X.
- We have seven full sibling heifers in our bred heifer pen.
- This opportunity will never be available again as 825U is deceased.
- I have some very specific thoughts about how to use these bulls, so give me a call if you want my opinion.



Blair's Blackbird 107X
Full Sibling to Lots 64-68

67 BLAIR'S **Mulberry** 660E

BBC 660E 9 Mar 2017 2000868 BW: 72 ADJ WW: 771

SIRE	RED COMPASS MULBERRY 449M	RED HR RAMBO ET 91K
	RED FINE LINE MULBERRY 26P	RED BRYLOR MISS ROC 20H
	RED DUS FAYETTE 8G	RED SILVEIRAS REDFORD
		RED MC DOUGALL FAYETTE 59A
DAM	S A V NET WORTH 4200	S A V 8180 TRAVELER 004
	LLB BLACKBIRD 825U	S A V MAY 2410
	REMITALL BLACKBIRD 648R	REMITALL MERCEDES 146M
		LLB BLACKBIRD 330L

CE	BW	WW	YW	MILK	TM
••	1.8	49	88	27	52

• Full brother to Lots 64-66 and 68.

69 BLAIR'S **Signature** 843E

BBC 843E 3 Mar 2017 2076395 BW: 80 ADJ WW: 829

SIRE	RED SIX MILE GRAND SLAM 130Z	RED VGW GAME PLAN 816
	RED SIX MILE SIGNATURE 295B	RED SIX MILE REBECCA 216X
	RED SELMA OF SIX MILE 358X	RED SIX MILE UNLEASHED 595U
		RED RSL MISS SELMA 384F
DAM	S A V FINAL ANSWER 0035	SITZ TRAVELER 8180
	RAB MS FINAL ANSWER 4955W	S A V EMULOUS 8145
	RAB MS PREDESTINED 4826T	G A R PREDESTINED
		RAB MS DIRECTION 4955N

CE	BW	WW	YW	MILK	TM
••					

- MegaLass is what we call 4955W because she has never been able to go down a normal chute. She is monster ribbed and super sound.
- If you like them with a bit more frame but with the depth and performance required to put pounds on the scale at weaning, check out Blair's Signature 843E.

70 BLAIR'S **Omega** 837E

BBC 837E 21 Feb 2017 PENDING BW: 80 ADJ WW: 748

SIRE	COLEMAN CHARLO 0256	O C C PAXTON 730P
	BLAIR'S OMEGA 624C	BOHI ABIGALE 6014
	RAB MS FINAL ANSWER 4955W	S A V FINAL ANSWER 0035
		RAB MS PREDESTINED 4826T
DAM	S A V HARVESTOR 0338	S A V HERITAGE 6295
	BLAIR'S ANGEL 714C	S A V EMBLYNETTE 7749
	WERNER BLACK ANGEL 1299	S A V NET WORTH 4200
		CLEARWATER BLACK ANGEL 395

CE	BW	WW	YW	MILK	TM
••					

72 BLAIR'S **Signature** 600E

BBC 600E 20 Feb 2017 1999594 BW: 94 ADJ WW: 804

SIRE	RED SIX MILE GRAND SLAM 130Z	RED VGW GAME PLAN 816
	RED SIX MILE SIGNATURE 295B	RED SIX MILE REBECCA 216X
	RED SELMA OF SIX MILE 358X	RED SIX MILE UNLEASHED 595U
		RED RSL MISS SELMA 384F
DAM	BAR-E-L NATURAL LAW 52Y	S A V BISMARCK 5682
	BAR-E-L ERICA 74A	BAR-E-L MAGNOLIA 143K
	HF ERICA 339T	PEAK DOT FAME 2N
		HF ERICA 46P

CE	BW	WW	YW	MILK	TM
•	2.2	43	73	24	45

68 BLAIR'S **Mulberry** 668E

BBC 668E 10 Mar 2017 1999632 BW: 87 ADJ WW: 779

SIRE	RED COMPASS MULBERRY 449M	RED HR RAMBO ET 91K
	RED FINE LINE MULBERRY 26P	RED BRYLOR MISS ROC 20H
	RED DUS FAYETTE 8G	RED SILVEIRAS REDFORD
		RED MC DOUGALL FAYETTE 59A
DAM	S A V NET WORTH 4200	S A V 8180 TRAVELER 004
	LLB BLACKBIRD 825U	S A V MAY 2410
	REMITALL BLACKBIRD 648R	REMITALL MERCEDES 146M
		LLB BLACKBIRD 330L

CE	BW	WW	YW	MILK	TM
••	1.8	49	88	27	52

• Full brother to Lots 64-67.



RAB Ms Final Answer 4955W Dam

71 BBC 748E

BBC 748E 11 Apr 2017 Unregistered BW: 90 ADJ WW: 705

SIRE	WK SMOOTH 2382	SYDGEN DOC 9017
	JS POPEYE 11B	THOENE IN FOCUS 763
	S A V BARBARA 5407	S A V SUCCESSOR 1175
		HOFF STOCK LADY S C 929
DAM	UNREGISTERED SIM/ANGUS	

CE	BW	WW	YW	MILK	TM
•					

- Check out the WW on this bull and then look at his dam who happens to be "Miss Angus World."
- Long made with performance.

THE PURSUIT OF EXCELLENCE BLACK ANGUS BULLS



Red Double B Bullseye 1B

• Will Power 2F is a bull that we at Double B Angus are very proud to offer in this year's Pursuit of Excellence Bull Sale. Will Power's dam, Priscilla 44Z, needs no introduction into the breed as she has stamped the industry with her overall maternal power and phenotype through numerous of her offspring. Maternal brothers to 2F have gained a lot of fans within the breed, such as Semex sire, Red Double B Bullseye 1B or triple division winner this fall, SST Driller 946F for Standridge Cattle Co., and we feel 2F has the potential to follow in their footsteps. We are confident that this Power Eye x 44Z son will be beneficial for any producer's herd and will be admired for his length of side, depth of rib and amount of bone on sale day.



Lot 73

73 RED DOUBLE B **Willpower** 2F

BAX 2F 25 Feb 2018 2039824 BW: 81 ADJ WW: 719

SIRE	RED COCKBURN RIBEYE 308U	RED BAR-E-L RIBEYE 103R
	RED SOO LINE POWER EYE 161X	RED WILBAR CORA 443P
	RED TR LYNN 301R	RED GEIS KNIGHT HAWK 14'02
		TR LYNN 105L
DAM	RED RINGSTEAD KARGO 215U	RED RINGSTEAD KARGO 107M
	RED BLAIRS PRICILLA 44Z	RED RINGSTEAD MS EQUAL 589P
	RED BRYLOR PRISCILLA 67W	RED BRYLOR SDL RICHTER 212R
		RED BRYLOR PRISCILLA 304S

CE	BW	WW	YW	MILK	TM
••	1.4	39	65	18	37

74 RED DOUBLE B **Sniper** 4F

BAX 4F 13 Mar 2018 PENDING BW: 84 ADJ WW: 715

SIRE	RED FLYING O BOBO 11B	RED LAZY MC CC DETOUR 2W
	RED LAZY MC SON OF A GUN 234D	RED ROYAL ANCHOR EUMAH-LAS 54Y
	RED FLYING O BRIGHT 05B	RED LAZY MC HT 76Z
		RED ROYAL ANCHOR CRBONVANA 41Y
DAM	RED BLAIR'S BINGO 581B	RED RINGSTEAD KARGO 215U
	RED BLAIR'S MONIQUE 572D	RED WSF MS YANKEE 13T 12W
	RED BLAIR'S MONIQUE 175A	RED HAYCOW CUTTING EDGE 055
		RED TOWAW MONIQUE 2K

CE	BW	WW	YW	MILK	TM
••					



Red Blairs Pricilla 44Z
Dam of BAX 2F

• This dark cherry herd sire prospect is a stand out in any pen for his natural muscling, performance and skeletal design. Backed by one of the most successful heifers of any breed in 2017, Monique 572D, Sniper 4F is sure to make a big splash in the Red Angus breed in the next few years. If you are looking to add muscularity, power and a beautiful dark red hide to your calves, 4F should not be overlooked.



Lot 74

Platinum Warranty Program

Blairs.Ag Cattle Company guarantees to sell a bull that is sound and has passed a semen test by an accredited veterinarian. Should any bull purchased through the Pursuit of Excellence bull sale fail to be a satisfactory breeder or be unable to physically service a cow or heifer, he will be replaced with a bull of equal value. Should this not be possible, we will issue a credit to go towards the purchase of another bull. We will not however provide warranty for mismanagement.

While under our warranty, the bull is covered for injury, sickness or death. We will service your needs with a replacement bull, a sale credit or a cash settlement. Should you have any problems with a bull, please contact Blake MacMillan and he will work to make sure your cows get bred and you are a satisfied customer. We do have back up bulls set aside and that will be the first step to cover off any warranty issues. Blair's Platinum Bull Warranty is designed to protect your purchase during the most high risk time of a bull's life.

We offer the following options and are required to be paid on the day of the sale. It is the buyer's responsibility to purchase at the settlement desk.

PLAN	DURATION	RATE
#1	45 days	3%
#2	6 months	6%
#3	12 months	10%
#4	18 months	14%

COVERAGE:

Plan #1 – This plan is designed to warranty a bull from sale time until the bull can be delivered and has the opportunity to adjust to its new surroundings. The length of the Plan #1 warranty is 45 days. Plan #1 warranty covers 100% of the purchase price less the salvage value when applicable.

Plan #2– This plan covers the bull through breeding season and is 100% of the purchase price less the salvage value when applicable.

Plan #3 – This plan covers the bull for a full year which will include one(1) breeding season and one wintering period. In Plan #3 the warranty covers 100% of the purchase price less the salvage value when applicable.

Plan #4 – This plan covers the bull for eighteen(18) months and should cover two(2) breeding seasons and one(1) wintering period. In Plan #4 the warranty covers 100% of the purchase price for the first year(365 days) and 75% of the purchase price for the remaining six(6) months. In both situations the salvage price of the bull is deducted from the purchase price before the settlement is made.

EXCLUSION TO WARRANTY:

Any injury or death due to malicious, willful or intentional acts or mistreatment are considered fraudulent claims.

Should an issue arise with your bull please notify Blair's immediately by phone 306-528-7484 or by email bmacmillan@blairs.ag. You will also need to contact a licensed veterinarian to diagnose and treat the animal and fill out a vet form. If the animal dies, a post mortem will be required.

Note: All bulls that are left at Jackson Cattle after the sale for delivery will be automatically charged the 45 day Plan #1 bull warranty on their invoice. This is designed to protect both the buyer and seller.



New Sires...

WATCH FOR SONS
IN THE 2020 SALE!



RED DAMAR **Doctor** C501

RED SOO LINE POWER EYE 161X x RED DAMAR OH BABY W168



RED DAMAR **Trump** C512

RED SOO LINE POWER EYE 161X x RED DAMAR OH BABY W168



RED KJHT POWER **Take Off**

RED SOO LINE POWER EYE 161X x RED SRA PAINTBUCKET



RED TWG **Tommy Jack** 166A

RED SIX MILE GAME FACE 164Y x RED DAMAR PASSION X166



SIX MILE **Desert Storm** 94D

BAR-H CROSSFIRE 63A x SIX MILE FALLING STAR 219Y



PM **Thunderstruck** 22'13

HF THUNDERBIRD 146Y x MVF ROSEBUD 313U

Donor Dams...

WATCH FOR SONS
IN THE 2020 SALE!



RED BAR-E-L AB **Meg** 169Z
RED TOWAW INDEED 104H x RED BAR-E-L MEG 85N



RED SSS **Jessie** 261Z
RED SSS SOLDIER 365W x RED SSS JESSIE 654X



RED WCR **Miss Cora De** 867Z
RED LAZY MC CC DETOUR 2W x RED WILBAR CORA 443P



RED WCR **Miss Kuruba De** 2084Z
RED LAZY MC CC DETOUR 2W x RED CROWFOOT KURUBA 4179P



COLEMAN **Donna** 812
N BAR EMULATION EXT x KMK DONNA J311



DUFF EB 692 **Blackbird** 0256
DUFF E BLAST 8138 x DUFF NL 1T2 BLACKBIRD 692



RSKY 6540 **Ms Instinct** 0065
DUFF BASIC INSTINCT 6501 x RSKY 0108 MS MAGICIAN 6540



S A V **Madame Pride** 0151
S A V 004 DENSITY 4336 x S A V MADAME PRIDE 0075





DLF
PICKSEED



SEEDS & SCIENCE

*Buy a bull, and receive
a free bag of seed!*

Contact a Blair's team member at the following locations to book your 2019 forage and corn seed needs.

Lanigan	(306)-365-3150
Nokomis	(306)-528-3150
Watrous	(306)-946-3150
Liberty	(306)-847-4444
Strongfield	(306)-867-2225
Rosthern	(306)-232-4394
Lipton	(306)-336-2260
McLean	(306)-699-2822
Yorkton	(306)-782-2645

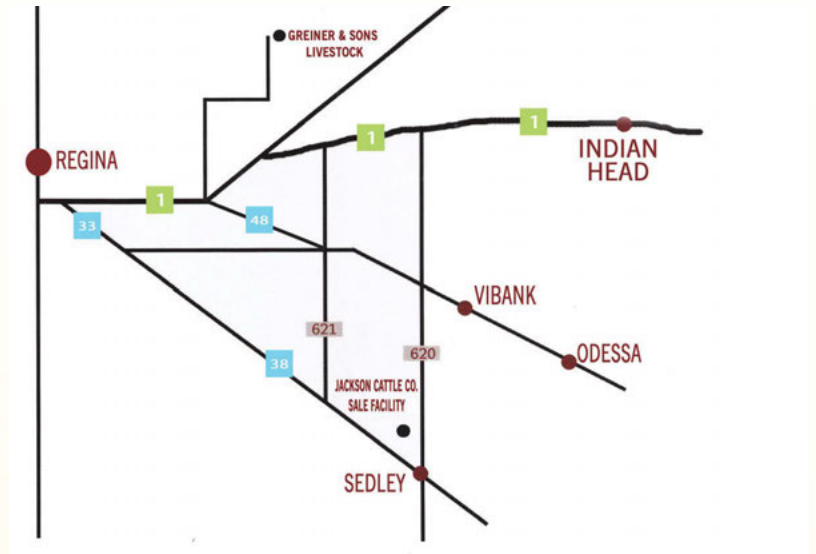


Join us in Sedley, Saskatchewan

Jackson Cattle Co. Sale Facility

Box 159, Sedley, SK S0G 4K0
Sale Barn: 306.885.4418
Levi's Cell: 306.537.9251

From Sedley: Go 4 miles north on 620, then 1/2 mile west and 1/2 mile back north.



Notes...

Blairs.Ag Influence

Commercial Heifer Sale

December 10, 2019

Johnstones Auction, Moose Jaw, SK

250

RED AND BLACK ANGUS
INFLUENCED BRED FEMALES
SELL FROM BLAIRS.AG...

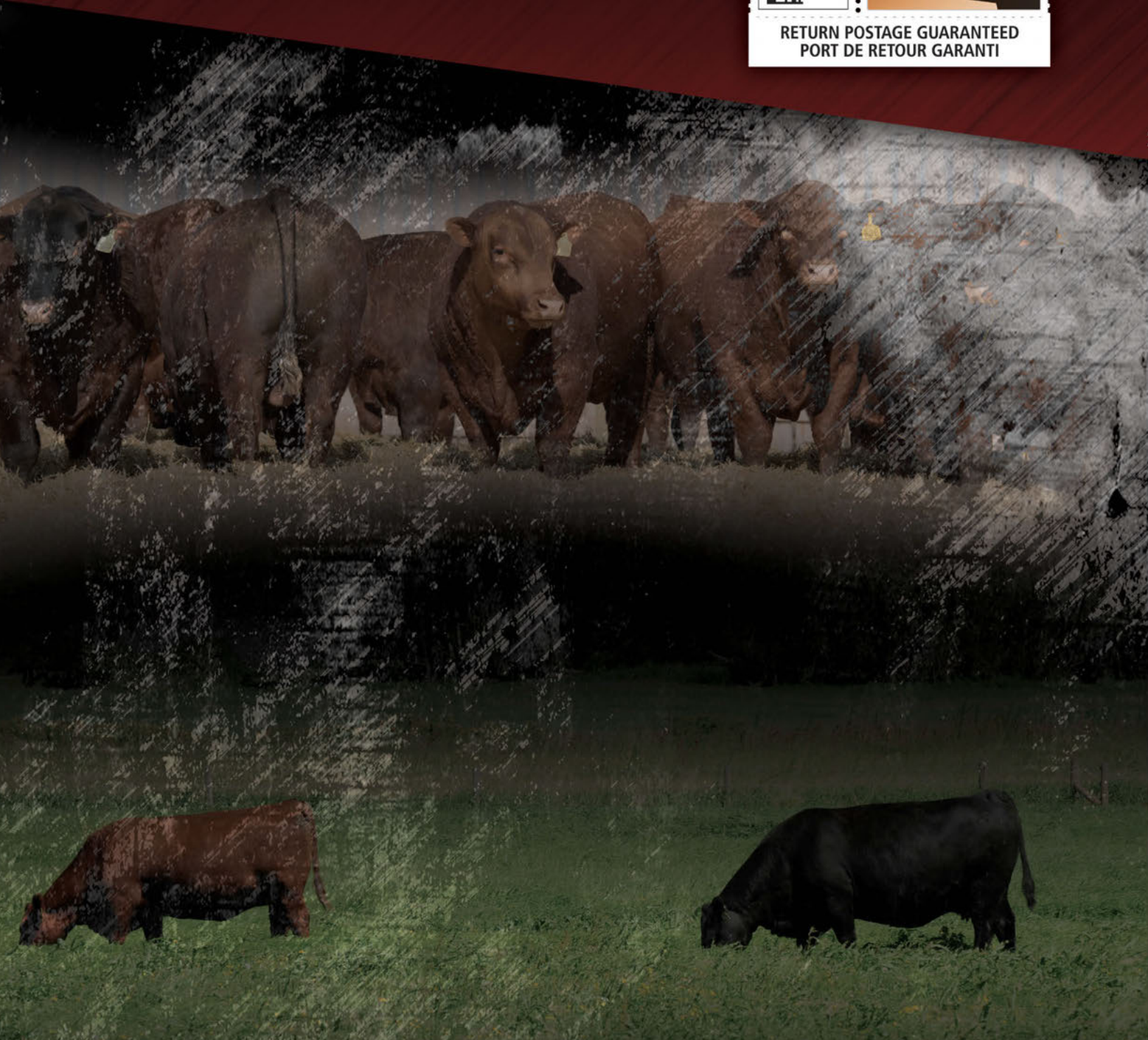
ALL HEIFERS CARRY THE GENETICS
OF BLAIRS.AG CATTLE CO BULLS.



Kevin & Noreen Blair
Darren & Deb Blair
Lanigan, SK Canada
www.blairscattleco.com

Kevin Blair	306.365.7922	kevin@blairs.ag
Blake MacMillan	306.528.7484	bmacmillan@blairs.ag
Chad Haaland	306.544.7770	haalandcattle@yahoo.ca
Scott Johnstone	306.631.0767	Johnstone Auction Mart

Return Undeliverable
Canadian Addresses To:
T Bar C Cattle Co. Ltd.
Box 2330
Warman, Saskatchewan S0K 4S0



Created By
Today's
Publishing