

# **BAR-E-I**

**Angus**



*Bull & Select Female  
Sale*

THURSDAY **MARCH 12** 2020

**2 PM** AT THE RANCH, STETTLER, AB



# Welcome to... **BAR-E-L**



*Dave & Lynne Longshore*

**H. 403-579-2394**

**C. 403-740-6788**

**Email: [barelanguus@gmail.com](mailto:barelanguus@gmail.com)**

**Website: [www.bar-e-l.com](http://www.bar-e-l.com)**

## Offering...

- 47** Black Angus Yearling Bulls
- 11** Black Angus Two Year Old Bulls
- 13** Black Angus Open Heifers

We would like to invite you to our Annual Bull & Select Female Sale on March 12th.

Most will agree, this year's Bull Sale offers the highest standard to date. It will feature some new sire groups, including sons by EF COLOSSAL 520, LD CAPITALIST 316 and ELLINGSON HOMEGROWN 6035! We also have a nice group of two year old bulls if you are looking for more maturity from your new sire.

The females on offer come from the top end of our 2019 heifer calf crop and will become productive cows for their new owners.

We appreciate the many customers that return to BAR-E-L on an annual basis who recognize the value our genetics are having on your programs. We certainly thank you for your commitment and loyalty.

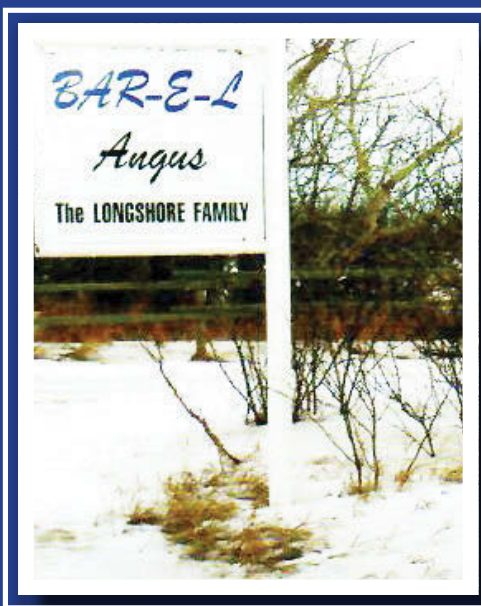
Our focus is to offer genetics that will add the pay weight to your calves while maintaining the maternal function of your cowherd.

Please join us for lunch on March 12th; we look forward to having you!

Sale starts at 2 p.m.

*Dave & Lynne*

**BAR-E-L Angus**

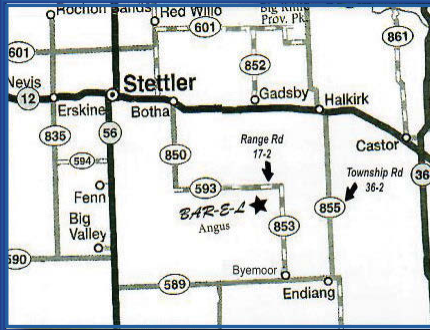


*The  
Brand of  
Quality!*



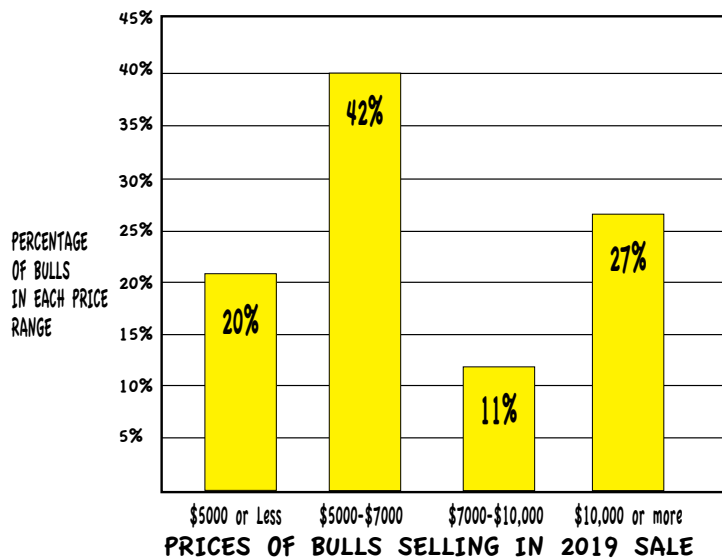
## Directions to the Ranch:

FROM #593 - 3 Miles South on RR 17-2  
FROM #855 - 8 Miles West on Twnshp Rd 36-2, 1 Mile North  
FROM #589 - From Byemoor, 7 Miles North to Twnshp Rd 36-2, 2 Miles West, 1 Mile North



Directions to the Ranch

## Bulls at BAR-E-L sell in EVERYONE's BUDGET!



A Bull in Everyone's Budget

## CALVING EASE

To help you select the best bull for your operation, all bulls have been rated with the following system.

### The criteria used to evaluate the bulls:

1. Actual birth weight
2. Consistency of birth weight of sire's calves as a group
3. Consistency of birth weight of dam's calves
4. Consistency of calving ease of sire and dam - build of the calf

### Recommendations:

- ★ Recommended only for cows
- ★★ Recommended for cows or larger framed heifers that were not big at birth
- ★★★ Recommended for heifers

Keep in mind 50% of your calf's birth weight relates back to his mother's birth weight.

Calving Ease Score Criteria

## Can't make it to the sale? Internet Bidding Available.

To view this sale visit [www.dlms.ca](http://www.dlms.ca), Fill out the registration form located under registration and sign-up for your free user account and select a username and password.

BIDDERS - To be approved as a bidder, Log in to [dlms.ca](http://dlms.ca) and click BUYER APPROVAL tab, select the sale you are interested in bidding at and click sign up.

For more information

Call DLMS Reps:

Mark Shologan - 780-699-5082 or  
DLMS Purebred Team 780.991-3025

DLMS  
[www.dlms.ca](http://www.dlms.ca)

Online Bidding

Videos of complete sale offering available online prior to sale. Check them out!



# Sight Unseen Purchase Plan

# EPDs and How to Use Them

## How It Works:

Our first choice, and most rewarding for you our customers, is for you to attend our sale in person.

However, if for any reason you cannot attend, we are offering this option to meet your bull buying needs.

1. Give me a call at 403-740-6788
2. Together we will establish your bull needs, go through the bull offering with you, and establish a list that fits your profile and budget.
3. I will do my best to purchase on your behalf, a bull from your list, your first choice if possible.
4. I will guarantee your satisfaction on arrival! You will not make payment until delivery.

Prefer to be on the phone sale day, this can be arranged.

We know our cattle, and you know what your bull needs are.

If you put your trust in us, we will reward you with our best effort in selecting a bull to meet your requirements.

Many factors play a role in choosing a bull, like visual observation, pedigree, actual birth weight, weaning weights, breeding soundness evaluation, and EPD's.

Expected Progeny Differences (EPDs) are estimates of an animal's genetic merit. EPDs are the difference between the predicted average performance of an animal's future progeny and the average progeny performance of another animal whose EPD is zero. For example, if Bull A has a birth weight EPD of +9.0 lbs and Bull B has a birth weight EPD of +3.0 lbs, this means that Bull A's calves will have birth weights that are 6 lbs heavier than whatever the birth weight of Bull B's calves are, on average. This can be applied for each component measured - weaning weight, yearling weight, milk, etc..

To compensate for differences in environment and management, contemporary groupings are used. Contemporary groups are animals of the same age and sex raised under the same management conditions. Once these factors are accounted for, the genetic component is the part that remains, and that is what EPDs predict.

Each breed association publishes various EPDs and indexes, and they are NOT COMPARABLE to each other. Because EPDs predict AVERAGE progeny performance, it is important to realize that EPDs DO NOT PREDICT individual animal performance, nor do they correspond to any specific value for a particular trait.

One last important point - AVOID single trait selection! Although all these numbers can get confusing, selection based upon a single trait can often lead to undesired consequences. A balanced selection approach focusing on optimizing traits for your environment and production system works much better than trying to maximize a single trait.



# Sale Day Numbers

**Dave 403.740.6788**

**Lynne 403.741.9445**

## **Sale Staff**

### **AUCTIONEER**

Brent Carey - 403-650-9028

### **RING SERVICE**

Craig Flewelling 403-556-0565

Bryon Wolters 780-853-2781

### **CONSULTANTS**

**Bohrson Marketing Services Ltd.**

Scott Bohrson 403.370.3010

Rob Voice 306.279.6082

**O.B.I. Livestock Ltd.**

Mark Holowaychuk 403.896.4990

**Peterosa Exports**

Roger Peters 403.828.9815

**KK Seedstock Consultants**

Keith Kisse 817.821.6263

**Bullseye Feeds**

Tom McNeely 780-679-7220

**Today's Angus Advantage**

Chris Poley 306-220-5006

**Insurance - Stockman's Insurance**

Larry Toner 306-932-4866 or 306-834-7652

## **Internet Bidding Available**

**D | L | M | S**

*www.dlms.ca*

For more information call DLMS:  
Mark Shologan 780.699.5082 or  
DLMS Purebred Team 780.991.3025

## **SPECIAL REPS**

**CAA - Bob Hahn - President**

**CAA - Brian Good - Field Rep**  
403-391-4037

## **ACCOMMODATIONS**

**Ramada Inn**

403-742-6555

**Canalta Inn**

403-742-5808

**Super 8 Motel**

403-742-3391

**Heartland Lodge**

403-742-3401

## **TERMS OF SALE**

Cash or cheque payable sale day. Each animal becomes the risk of the purchaser as soon as sold. Bulls are developed free of charge until delivery that begins in April.

## **FERTILITY**

All bulls will palpated, scrotal measured and semen tested prior to sale by our veterinarian. Scrotal measurements and any bull with a deferred score will be noted sale day. All bulls selling will pass a semen evaluation prior to delivery.

## **ABSOLUTELY 100% GUARANTEED**

We guarantee to provide you with a sound breeding bull, capable of passing a semen test within 14 months of age. Bulls are not guaranteed to freeze semen. If you have a problem with your bull, please notify us immediately.

## **IN-HERD SEMEN**

BAR-E-L reserves the right to draw semen for in-herd use - at our expense - at the buyer's convenience - on any bull in the sale.

## **CERTIFICATE OF REGISTRY**

A certificate of registration will be transferred to the buyer for each registered animal after complete and full payment has been made.

## **IDENTIFICATION**

CCIA digital frequency buttons will be in their ear plus a Lot tag corresponding to the catalogue.

## **INSURANCE**

Will be available sale day and buyers are encouraged to purchase insurance.

## **ANNOUNCEMENTS**

Errors in this catalogue will be corrected by announcements from the block at sale time and such corrections will take precedence over any printed matter. Any disputes will be settled by the Auctioneer.

## **BUYER REGISTRATION**

Buyers please register for a buyer number prior to purchasing.

## **HEALTH**

All bulls are on the PHIZER GOLD vaccination program and treated with IVOMEK.

## **ACCIDENTS**

Although every precaution is taken, neither sale staff or the owners will assume any responsibility, and disclaims any liability, legal or otherwise for any reason.

## **DELIVERY**

Free delivery for bulls within a 200 mile radius of the ranch, usually to your corral. When time on the road is a factor, bulls delivered further will be to central locations, or the nearest port of entry to the USA, on purchases of \$4000 or more. Deliveries beyond the Saskatchewan/Manitoba border will be on a cost share basis.

*Sales Staff  
and  
Terms*

*Schedule  
of  
Events*

**Thursday,  
March 12,  
2020**

**12:30 pm  
Complimentary  
BBQ Steak  
Lunch**

**2:00 pm  
BAR-E-L Sale  
Food and  
refreshments  
served  
throughout  
the day**



Yearling  
Bulls

LOT  
2G



## BAR-E-L GRAND 2G

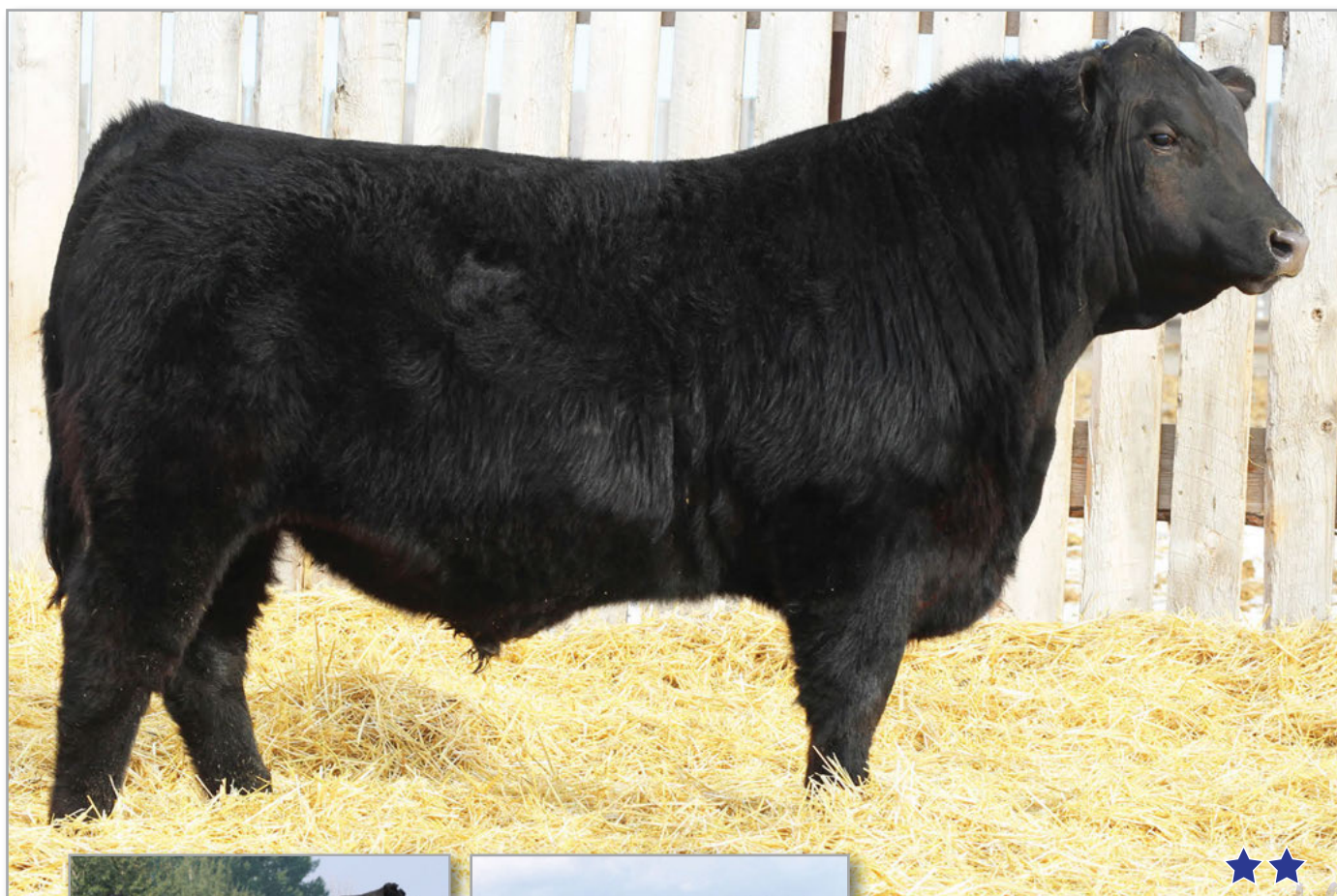
Male YHB 2G January 28 2019 2087436

MUSGRAVE BIG SKY  
S: BAR-E-L CUTTING EDGE 124D  
DBRL 94T BRIDE 4W  
WIL-DORR 4336 28T DEN-ERIC 21Z  
D: BAR-E-L MARY 84B  
WILGOR 3W MARY 32Z

CONNELLY EARNAN 076E  
SAV PRIMROSE 7861  
HF ALASKAN 94T  
SANDY BAR BRIDE 74T  
S A V 004 DENSITY 4336  
GLEN ISLAY ERICA 28T  
500 LINE GRIZZLEY 9034  
WLL MARY 3W

BW 84 lbs. WW 900 lbs. Adj. 205D 759 lbs. Adj. 365D 1247 lbs.  
BW +1.0 WW +39 YW +63 Milk +21 TM +41

GRAND, this long spined, smooth made son of our 2017 second high seller BAR-E-L CUTTING EDGE has the growth and performance to add profit to your calf crop. You could put him with your heifers with a BW EPD of +1.0. Maternal brother sold to George Paillard in last year's sale.



BAR-E-L DUCHESS 104B  
Grand dam of GUNNER 3G



BAR-E-L VINDICATED 109B  
Grand sire of GUNNER 3G

GUNNER would be one of the popular sons of Genex sire ELLINGSON HOMEGROWN. HOMEGROWN has been used in large groups of heifers for calving ease. He was added to our program for that purpose. GUNNER has a real attractive look and distinct herd bull character. His dam is sired by VINDICATED, which was our 2015 high selling bull, selling to ARDA Farms.

## BAR-E-L GUNNER 3G

Male YHB 3G January 28 2019 2087437

CTS REMEDY 11T01  
S: ELLINGSON HOMEGROWN 6035  
EA BLANCHE 4137  
BAR-E-L VINDICATED 109B  
D: BAR-E-L DUCHESS 48E  
BAR-E-L DUCHESS 104B

CONNELLY THUNDER  
CTS 7V03 BELLEMERE MAID 9T02  
ELLINGSON FORMAT 2205  
EA BLANCHE 1137  
S A V HARVESTOR 0338  
BAR-E-L BLACKBIRD 63U  
BUSHS ROCK SOLID 983  
BAR-E-L DUCHESS 174X

BW 88 lbs. WW 875 lbs. Adj. 205D 815 lbs. Adj. 365D 1390 lbs.  
BW +2.9 WW +57 YW +102 Milk +27 TM +56





# LOT 7G BAR-E-L GRANDSLAM 7G

Male YHB 7G February 1 2019 2108482

MUSGRAVE BIG SKY  
S: BAR-E-L CUTTING EDGE 124D  
DBRL 94T BRIDE 4W  
HF G-MAN 29B  
D: BAR-E-L DUCHESS 137D  
BAR-E-L DUCHESS 160U

CONNEALY EARNAN 076E  
SAV PRIMROSE 7861  
HF ALASKAN 94T  
SANDY BAR BRIDE 74T  
HF SIMULATOR 62Z  
HF ECHO 178W  
S A V NET WORTH 4200  
BAR-E-L DUCHESS 116R

BW 86 lbs. WW 880 lbs. Adj. 205D 794 lbs. Adj. 365D 1402 lbs.  
BW +1.3 WW +47 YW +75 Milk +21 TM +45



BAR-E-L DUCHESS 160U  
Grand dam of GRANDSLAM 7G

GRANDSLAM is a soft made, chunky, easy  
fleshing type bull. He comes from a low birth  
cow line which features one of our great donor  
dams, DUCHESS 160U, who herself has two  
sons in this year's sale.



# LOT 12G BAR-E-L EXPANSION 12G

Male YHB 12G February 4 2019 2108483

MUSGRAVE BIG SKY  
S: BAR-E-L CUTTING EDGE 124D  
DBRL 94T BRIDE 4W  
BROOKING OPEN ROAD 4051  
D: BAR-E-L MAGNOLIA 105D  
BAR-E-L MAGNOLIA 78Z

CONNEALY EARNAN 076E  
SAV PRIMROSE 7861  
HF ALASKAN 94T  
SANDY BAR BRIDE 74T  
S A V RESOURCE 1441  
TLA BEAUTY 6R  
SOUTHLAND THRILLER 83X  
BAR-E-L MAGNOLIA 15T

BW 94 lbs. WW 945 lbs. Adj. 205D 856 lbs. Adj. 365D 1353 lbs.  
BW +2.5 WW +47 YW +76 Milk +20 TM +44



BAR-E-L MAGNOLIA 78Z  
Grand dam of EXPANSION 12G

EXPANSION, we absolutely love this powerful meat  
wagon! When you analyze this pedigree, you see some  
of our finest maternal lines top and bottom in the  
MAGNOLIA's and the BRIDE's.



BAR-E-L MAGNOLIA 15T  
Great grand dam of EXPANSION 12G



## BAR-E-L GENERAL 13G

LOT  
13G

Male YHB 13G February 4 2019 2108484

CTS REMEDY 1T01	CONNEALY THUNDER
S: ELLINGSON HOMEGROWN 6035	CTS 7V03 BELLEMERE MAID 9T02
EA BLANCHE 4137	ELLINGSON FORMAT 2205
HF G-MAN 29B	EA BLANCHE 1137
D: BAR-E-L MAGNOLIA 105E	HF SIMULATOR 62Z
BAR-E-L MAGNOLIA 70A	HF ECHO 178W
	SOUTHLAND THRILLER 83X
	BAR-E-L MAGNOLIA 184R

BW 94 lbs. WW 945 lbs. Adj. 205D 856 lbs. Adj. 365D 1353 lbs.  
BW +2.5 WW +47 YW +76 Milk +20 TM +44

*GENERAL is another HOMEGROWN out of a first calf heifer. Exceptional production from our two year old females. Again note the MAGNOLIA family.*



BAR-E-L MAGNOLIA 70A  
Grand dam of GENERAL 13G

## BAR-E-L FRANCHISE 18G

LOT  
18G

Male YHB 18G February 6 2019 2108481

EXAR CLASSEN 1422B	DAMERON FIRST CLASS
S: EF COLOSSAL 520	EXAR PRINCESS 2006
EXAR BLACKBIRD 5877	SCHURRTOP MC 2500
HF SMOKIN' ACES 105Y	EXAR BLACKBIRD 4448
D: BAR-E-L DUCHESS 142A	GREENS PREMIUM 7578
BAR-E-L DUCHESS 174X	HF ERICA 26T
	HF UNDISPUTED 183U
	BAR-E-L DUCHESS 160U

BW 90 lbs. WW 890 lbs. Adj. 205D 779 lbs. Adj. 365D 1304 lbs.  
BW +1.4 WW +38 YW +63 Milk +22 TM +41

*We certainly admire the job that COLOSSAL has done in his first calf crop. FRANCHISE is a son of the 2018 Farmfair Reserve Champion Female, BAR-E-L DUCHESS 142A. Maternal brothers have sold to Rafter 17 Ranch, and Hahn Cattle Company. Make note of the DUCHESS family; predictable and consistent.*



BAR-E-L DUCHESS 142A  
Dam of FRANCHISE 18G





**BAR-E-L STAMINA 11F**  
Maternal brother to **HARD COPY 20G**  
Sold to Everblack Angus



## BAR-E-L **HARD COPY** 20G

Male YHB 20G February 7 2019 2108485

CTS REMEDY 1T01  
S: ELLINGSON HOMEGROWN 6035  
EA BLANCHE 4137  
HF G-MAN 29B  
D: BAR-E-L MIA 100D  
MIA OF RING CREEK 69Y

CONNEALY THUNDER  
CTS 7V03 BELLEMERE MAID 9T02  
ELLINGSON FORMAT 2205  
EA BLANCHE 1137  
HF SIMULATOR 62Z  
HF ECHO 178W  
RING CREEK BARDOLINE 69W  
MIA OF RING CREEK 22W

BW 90 lbs. WW 855 lbs. Adj. 205D 790 lbs. Adj. 365D 1365 lbs.  
BW +2.6 WW +58 YW +101 Milk +29 TM +58

Another popular individual. Deep bodied,  
stout made. If you are looking for cattle  
with foot quality and soundness, these  
HOMEGROWN sons tie it all together.



**BAR-E-L MIA 100D**  
Dam of **HARD COPY 20G**

## BAR-E-L **GAMBLER** 28G

Male YHB 28G February 8 2019 2108486

CTS REMEDY 1T01  
S: ELLINGSON HOMEGROWN 6035  
EA BLANCHE 4137  
BAR-E-L MUCHMORE 155A  
D: BAR-E-L ERICA 25C  
XO CROWFOOT ERICA 827U

CONNEALY THUNDER  
CTS 7V03 BELLEMERE MAID 9T02  
ELLINGSON FORMAT 2205  
EA BLANCHE 1137  
SOUTHLAND THRILLER 83X  
BAR-E-L DUCHESS 160U  
H A IMAGE MAKER 0415  
CROWFOOT ERICA 6313SCS

BW 96 lbs. WW 850 lbs. Adj. 205D 767 lbs. Adj. 365D 1267 lbs.  
BW +2.6 WW +52 YW +97 Milk +31 TM +57



These HOMEGROWN sons are all very similar. Long  
bodied, smooth made, great hair coats, flawless in their  
structure. This pedigree features **BAR-E-L MUCHMORE**  
**155A**, our 2015 high selling bull to Pederson Livestock.  
Grand dam led off the Crowfoot dispersal sale.





## BAR-E-L POWER 32G

Male YHB 32G February 10 2019 2100497

D H D TRAVELER 6807  
S: O C C ECHELON 857E  
DIXIE ERICA OF CH 1019  
HF G-MAN 29B  
D: BAR-E-L NAOMI 9D  
BAR-E-L NAOMI 8B

Q A S TRAVELER 23-4  
BEMINDFUL MAID D H D 0807  
PBC 707 1M F0203  
DIXIE ERICA OF CH 615  
HF SIMULATOR 62Z  
HF ECHO 178W  
BUSHS ROCK SOLID 983  
BAR-E-L NAOMI 60Y

BW 96 lbs. WW 850 lbs. Adj. 205D 767 lbs. Adj. 365D 1267 lbs.  
BW +2.6 WW +52 YW +97 Milk +31 TM +57

We found this calf to be very interesting right from birth. He is sired by one of the great historic maternal sires O C C ECHELON 857E, who in turn is the sire of O C C LEGACY 839L. To add further to that, the grand dam NAOMI 8B is a donor cow at BAR-E-L and comes from one of the most prolific cow families we have had in the last ten years! We think this calf has a lot to offer. Anyone looking for a different twist on pedigree compared to some of the modern day, be sure to check out POWER!



BAR-E-L NAOMI 8B  
Dam of POWER 32G

## BAR-E-L TOP SHELF 33G

Male YHB 33G February 11 2019 2110268

CONNEALY CAPITALIST 02B  
S: LD CAPITALIST 316  
LD DIXIE ERICA 2053  
RING CREEK FLYNN 25A  
D: BAR-E-L ERICA 107C  
BAR-E-L ERICA 60A

S A V FINAL ANSWER 0035  
PRIDES PITA OF CONANGA 8821  
C A FUTURE DIRECTION 5321  
LD DIXIE ERICA OAR 0853  
RING CREEK BURLIVES 88Y  
RING CREEK AMBUSH LADY 43T  
GDAR GAME DAY 449  
BAR-E-L ERICA 22Y

BW 92 lbs. WW 855 lbs. Adj. 205D 779 lbs. Adj. 365D 1296 lbs.  
BW +1.1 WW +58 YW +96 Milk +26 TM +55

One of the few direct sons of LD CAPITALIST 316 to be offered in Canada. A popular bull used throughout North America and other countries around the world. These sons at BAR-E-L are pretty much part of an exclusive offering in Canada.





## BAR-E-L ORIGINAL 40G

LOT  
40G

Male YHB 40G February 12 2019 2100500

CTS REMEDY 1T01  
S: ELLINGSON HOMEGROWN 6035  
EA BLANCHE 4137  
HF G-MAN 29B  
D: BAR-E-L T00TS 97E  
BAR-E-L T00TS 7W

CONNEALY THUNDER  
CTS 7V03 BELLEMERE MAID 9T02  
ELLINGSON FORMAT 2205  
EA BLANCHE 1137  
HF SIMULATOR 62Z  
HF ECHO 178W  
BAR-E-L SAFARI 18S  
GENEL T00TS 573R

BW 84 lbs. WW 780 lbs. Adj. 205D 770 lbs. Adj. 365D 1402 lbs.  
BW +2.8 WW +50 YW +92 Milk +28 TM +53

*Another heifer's first calf, a HOMEGROWN from a G-MAN daughter. A smooth attractive made bull, very suitable for your heifer pen.*



## BAR-E-L GANGSTER 43G

LOT  
43G

Male YHB 43G February 13 2019 2108488

CTS REMEDY 1T01  
S: ELLINGSON HOMEGROWN 6035  
EA BLANCHE 4137  
HF G-MAN 29B  
D: BAR-E-L DUCHESS 102E  
BAR-E-L DUCHESS 70Z

CONNEALY THUNDER  
CTS 7V03 BELLEMERE MAID 9T02  
ELLINGSON FORMAT 2205  
EA BLANCHE 1137  
HF SIMULATOR 62Z  
HF ECHO 178W  
SOUTHLAND THRILLER 83X  
BAR-E-L DUCHESS 160U

BW 90 lbs. WW 860 lbs. Adj. 205D 844 lbs. Adj. 365D 1350 lbs.  
BW +3.9 WW +56 YW +98 Milk +28 TM +56

*If you are looking for consistency, be sure to consider the fact that there are several 3/4 brothers; HOMEGROWN - G-MAN combinations. Most of these have been produced from two year old heifers.*



## BAR-E-L GUARDIAN 45G

LOT  
45G

Male YHB 45G February 13 2019 2108489

CTS REMEDY 1T01  
S: ELLINGSON HOMEGROWN 6035  
EA BLANCHE 4137  
SAV NET WORTH 4200  
D: BAR-E-L BIRDIE 46X  
GEIS BIRDIE 113'00

CONNEALY THUNDER  
CTS 7V03 BELLEMERE MAID 9T02  
ELLINGSON FORMAT 2205  
EA BLANCHE 1137  
SAV 8180 TRAVELER 004  
SAV MAY 2410  
GEIS MAXIMUM 26'95  
BIRDIE OF RAINBOW HILLS 91G

BW 88 lbs. WW 985 lbs. Adj. 205D 884 lbs. Adj. 365D 1526 lbs.  
BW +2.4 WW +53 YW +98 Milk +29 TM +56

*If you are looking for one with extra power and grow, GUARDIAN certainly offers that! One look at his performance and it is easy to see why. With a WW of 985 lbs., and an ADJ 365 of 1526 lbs., he was produced from a ten year old dam that continues to get the job done in a big way!*





## BAR-E-L PREMIUM 47G

LOT  
47G

Male YHB 47G February 13 2019 2108491

CTS REMEDY 1T01  
S: ELLINGSON HOMEGROWN 6035  
EA BLANCHE 4137  
HF G-MAN 29B  
D: BAR-E-L LADY MONOGRAM 25E  
BAR-E-L LADY MONOGRAM 42Y

CONNEALY THUNDER  
CTS 7V03 BELLEMERE MAID 9T02  
ELLINGSON FORMAT 2205  
EA BLANCHE 1137  
HF SIMULATOR 62Z  
HF ECHO 178W  
HF ALASKAN 94T  
B.B.A.R. LADY MONOGRAM 3167

BW 88 lbs. WW 850 lbs. Adj. 205D 835 lbs. Adj. 365D 1436 lbs.  
BW +2.7 WW +55 YW +94 Milk +26 TM +54



BAR-E-L LADY MONOGRAM 42Y  
Dam of LAWMAN 48G  
Grand dam of PREMIUM 47G

*Both PREMIUM, and LAWMAN, have been produced from the LADY MONOGRAM cow family. We identified it as one of the best at the Diamond B dispersal. They are thick muscular bulls with herd bull presence and soundness right to their foot structure. The females in this cow line are superb in their udder quality and milk flow and can be counted on to produce those big calves every year. Conway Sauter purchased an outstanding son in last year's sale.*

## BAR-E-L LAWMAN 48G

LOT  
48G

Male YHB 48G February 13 2019 2108493

CTS REMEDY 1T01  
S: ELLINGSON HOMEGROWN 6035  
EA BLANCHE 4137  
HF ALASKAN 94T  
D: BAR-E-L LADY MONOGRAM 42Y  
B.B.A.R. LADY MONOGRAM 3167

CONNEALY THUNDER  
CTS 7V03 BELLEMERE MAID 9T02  
ELLINGSON FORMAT 2205  
EA BLANCHE 1137  
HF KODIAK 5R  
HF ECHO 112R  
B.B.A.R. BIG JAKE 1216  
B.B.A.R. LADY MONOGRAM 16796

BW 98 lbs. WW 930 lbs. Adj. 205D 836 lbs. Adj. 365D 1436 lbs.  
BW +2.9 WW +54 YW +91 Milk +25 TM +52







## BAR-E-L FOCUS 49G

LOT  
49G

Male YHB 49G February 13 2019 2100501

CTS REMEDY 1T01  
S: ELLINGSON HOMEGROWN 6035  
EA BLANCHE 4137  
HF G-MAN 29B  
D: BAR-E-L BIRDIE 163E  
BAR-E-L BIRDIE 215Y

CONNEALY THUNDER  
CTS 7V03 BELLEMERE MAID 9T02  
ELLINGSON FORMAT 2205  
EA BLANCHE 1137  
HF SIMULATOR 62Z  
HF ECHO 178W  
HF UNDISPUTED 183U  
GEIS BIRDIE 11300

BW 80 lbs. WW 740 lbs. Adj. 205D 740 lbs. Adj. 365D 1290 lbs.  
BW +1.5 WW +48 YW +85 Milk +29 TM +51

*Another HOMEGROWN - G-MAN combination. Three star calving ease bull suitable for heifers.*



## BAR-E-L GUNSLINGER 50G

LOT  
50G

Male YHB 50G February 13 2019 2108494

RITO 707 OF IDEAL 3407 7075  
S: S A V RESOURCE 1441  
S A V BLACKCAP MAY 4136  
GDAR GAME DAY 449  
D: BAR-E-L BIRDIE 29Z  
BIRDIE OF RAINBOW HILLS 13X

R R RITO 707  
IDEAL 3407 OF 1418 076  
S A V 8180 TRAVELER 004  
S A V MAY 2397  
BOYD NEW DAY 8005  
G D A R MISS WIX 474  
S A V PIONEER 7301  
BIRDIE OF RAINBOW HILLS 91N

BW 90 lbs. WW 910 lbs. Adj. 205D 818 lbs. Adj. 365D 1384 lbs.  
BW +2.0 WW +59 YW +107 Milk +21 TM +51

*Sired by the legendary S A V RESOURCE 1441, this sire continues to be used throughout the world for his fault free functional offspring, that add pay weight to their offspring and maternal value to your cowherd.*

## Just a Note...

We feel last year's birth weights climbed through extreme cold through February. The cows were eating almost non stop and not moving around dealing with the elements. If you compare those weights with this year's weights, there is a comfortable 10 lb. difference. Very noticeable!

Every bull calf is weighed on a digital scale and these weights are honest and accurate! No guessing. A legendary sale manager told me recently, some breeders weigh their calves at the breakfast table. It always amazes me that in some sale catalogues, the birth weights are perfect, just what the buyers want to read. My opinion. Dave







## BAR-E-L CUSTOM MADE 53G

Male ET YHB 53G February 14 2019 2121970

CONNEALY CAPITALIST 028	S A V FINAL ANSWER 0035
S: LD CAPITALIST 316	PRIDES PITA OF CONANGA 8821
LD DIXIE ERICA 2053	C A FUTURE DIRECTION 5321
LLB REFLECTION 607A	LD DIXIE ERICA 0AR 0853
D: HF EVENING TINGE 38C	MCATL REFLECTION 120-577
HF EVENING TINGE 118Z	500 LINE DANA 9028
	HF TIGER 5T
	HF EVENING TINGE 55N

BW 86 lbs. WW 950 lbs. Adj. 205D 853 lbs. Adj. 365D 1501 lbs.  
BW +0.1 WW +62 YW +107 Milk +29 TM +59



HF EVENING TINGE 38C  
Dam of CUSTOM MADE 53G

*This high quality son of LD CAPITALIST 316 along with his brother 88G, represent the very best we have to offer. The 316 progeny are very limited in Canada, mostly through AI stud brothers. The LD CAPITALIST 316 progeny have been recognized in the Angus industry to be a leader in most economic traits.*

*CUSTOM MADE is a powerful bodied calf, exceptional performance, great hair, and very sound to the ground in terms of foot quality. His dam, HF EVENING TINGE 38C, was a \$20,000 purchase in the 2016 Hamilton Farms spring sale. Worth every penny!!! This big bodied power cow has a great foot, perfect udder, and is an anchor in our donor dam pen. Her influence is evident in both her sons and daughters.*

*Be sure to check out CUSTOM MADE 53G, and ROYAL MINT 88G!*



BAR-E-L CUSTOM MADE 53G  
2019 CWA Intermediate Calf Champion



## BAR-E-L GENIUS 61G

LOT  
61G

Male YHB 61G February 15 2019 2108495

EXAR CLASSEN 1422B  
S: EF COLOSSAL 520  
EXAR BLACKBIRD 5877  
KR BULLSEYE 3451  
D: HF ECHO 69C  
HF ECHO 279X

DAMERON FIRST CLASS  
EXAR PRINCESS 2006  
SCHURRTOP MC 2500  
EXAR BLACKBIRD 4448  
MOGCK BULLSEYE  
WK QUEEN 1540  
HF KODIAK 5R  
HF ECHO 167R

BW 96 lbs. WW 865 lbs. Adj. 205D 800 lbs. Adj. 365D 1359 lbs.  
BW +3.1 WW +50 YW +84 Milk +22 TM +47

*This long, smooth made, fault free COLOSSAL son comes from a beautiful female with ideal udder and milk flow.*



## BAR-E-L SECURITY 64G

LOT  
64G

Male YHB 64G February 15 2019 2108497

EXAR CLASSEN 1422B  
S: EF COLOSSAL 520  
EXAR BLACKBIRD 5877  
YOUNG DALE XCALIBER 32X  
D: BAR-E-L BARBARA 109D  
LLB MCHENRY BARBARA 302S

DAMERON FIRST CLASS  
EXAR PRINCESS 2006  
SCHURRTOP MC 2500  
EXAR BLACKBIRD 4448  
YOUNG DALE KNOCK OUT 134U  
BROOKMORE TIBBIE 222T  
HF FREE WHEELER 191N  
DOUBLE J BARBARA 302D

BW 88 lbs. WW 790 lbs. Adj. 205D 754 lbs. Adj. 365D 1421 lbs.  
BW +2.5 WW +46 YW +76 Milk +17 TM +40

*This is a real neat calf. He has a real attractive look, with an abundance of capacity and is very easy doing. We lost his dam in the pasture in July and he performed very well on his own. We think he is one of the best in the pen.*



## BAR-E-L THE PROPHET 71G

LOT  
71G

Male YHB 71G February 17 2019 2110277

CONNELLY CAPITALIST 028  
S: LD CAPITALIST 316  
LD DIXIE ERICA 2053  
500 LINE THOR 1199  
D: BAR-E-L MARG 128A  
BAR-E-L MARG 109Y

S A V FINAL ANSWER 0035  
PRIDES PITA OF CONANGA 8821  
C A FUTURE DIRECTION 5321  
LD DIXIE ERICA OAR 0853  
BAR-E-L THOR 6T  
DUFF ML 505 ERICA 712-7159  
HF UNDISPUTED 183U  
BAR J P MARG 77N

BW 94 lbs. WW 895 lbs. Adj. 205D 817 lbs. Adj. 365D 1292 lbs.  
BW +1.4 WW +56 YW +101 Milk +31 TM +59

*Another CAPITALIST 316. Comes from an outstanding dam and cow family. She produced the 2017 CWA Senior Bull Calf Champion, and INTERNATIONAL son that sold to Bennett Ranching.*







## BAR-E-L ICEBERG QUEST 75G

Male YHB 75G February 18 2019 2108501

EXAR CLASSEN 1422B  
S: EF COLOSSAL 520  
EXAR BLACKBIRD 5877  
MUSGRAVE BIG SKY  
D: BAR-E-L BRIDE 159D  
DBRL 94T BRIDE 4W

DAMERON FIRST CLASS  
EXAR PRINCESS 2006  
SCHURRTOP MC 2500  
EXAR BLACKBIRD 4448  
CONNEALY EARNAN 076E  
SAV PRIMROSE 7861  
HF ALASKAN 94T  
SANDY BAR BRIDE 74T

BW 92 lbs. WW 935 lbs. Adj. 205D 891 lbs. Adj. 365D 1388 lbs.  
BW +2.7 WW +50 YW +79 Milk +19 TM +44



BAR-E-L BRIDE 159D  
Dam of ICEBERG QUEST 75G

DBRL BRIDE 4W  
Grand dam of  
ICEBERG QUEST  
75G



ICEBERG QUEST is a big topped, stout made son of COLOSSAL, certainly one of his best sons to-date. He was a member of our show team to Canadian Western Agribition placing 2nd in a class of high quality bulls.

If you like females that are highly maternal with perfect udder structure you will want to keep all the daughters from this great calf.



BAR-E-L ICEBERG QUEST 75G



## LOT 77G BAR-E-L GODFATHER 77G

Male YHB 77G February 28 2019 2108502

EXAR CLASSEN 1422B  
S: EF COLOSSAL 520  
EXAR BLACKBIRD 5877  
MUSGRAVE BIG SKY  
D: BAR-E-L TIBBIE 78D  
BAR-E-L TIBBIE 3Y

DAMERON FIRST CLASS  
EXAR PRINCESS 2006  
SCHURRTOP MC 2500  
EXAR BLACKBIRD 4448  
CONNEALY EARNAN 076E  
SAV PRIMROSE 7861  
HF HEMI 176W  
HF TIBBIE 115S

BW 82 lbs. WW 825 lbs. Adj. 205D 822 lbs. Adj. 365D 1437 lbs.  
BW +1.1 WW +47 YW +77 Milk +21 TM +45

*GODFATHER is a moderate framed bull with a big square hip full of muscle. He comes from the TIBBIE cow family that produced our herdsire BAR-E-L MR TIBBS 61C.*



BAR-E-L TIBBIE 178B  
Maternal sister to GODFATHER 77G  
Sold in 2014 Brooking Open Book Invitational Sale  
Purchased by Riverfront Angus



BAR-E-L TIBBIE 178B  
2014 CWA Junior Calf Champion

## LOT 80G BAR-E-L GOLDMINE 80G

Male YHB 80G February 18 2019 2108504

EXAR CLASSEN 1422B  
S: EF COLOSSAL 520  
EXAR BLACKBIRD 5877  
MUSGRAVE BIG SKY  
D: BAR-E-L BIRDIE 33D  
BAR-E-L BIRDIE 29Z

DAMERON FIRST CLASS  
EXAR PRINCESS 2006  
SCHURRTOP MC 2500  
EXAR BLACKBIRD 4448  
CONNEALY EARNAN 076E  
SAV PRIMROSE 7861  
GDAR GAME DAY 449  
BIRDIE OF RAINBOW HILLS 13X

BW 80 lbs. WW 820 lbs. Adj. 205D 789 lbs. Adj. 365D 1381 lbs.  
BW +0.6 WW +48 YW +81 Milk +22 TM +46

*The COLOSSAL - BIG SKY combination has really worked. GOLDMINE has that extra length and scale to grow into a powerful mature bull.*







HF EVEINING TINGE 38C  
Dam of ROYAL MINT 88G

## BAR-E-L ROYAL MINT 88G

Male ET YHB 88G February 20 2019 2121974

CONNEALY CAPITALIST 028  
S: LD CAPITALIST 316  
LD DIXIE ERICA 2053  
LLB REFLECTION 607A  
D: HF EVEINING TINGE 38C  
HF EVEINING TINGE 118Z

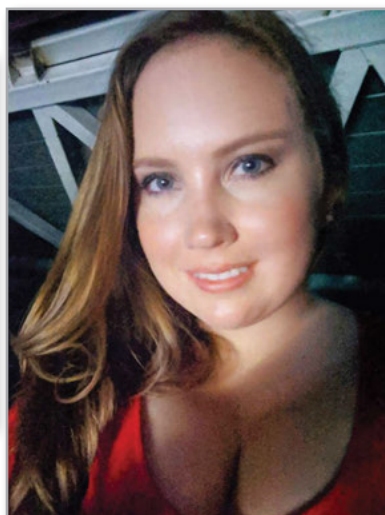
SAV FINAL ANSWER 0035  
PRIDES PITA OF CONANGA 8821  
C A FUTURE DIRECTION 5321  
LD DIXIE ERICA OAR 0853  
MCATL REFLECTION 120-577  
S00 LINE DANA 9028  
HF TIGER 5T  
HF EVEINING TINGE 55N

BW 94 lbs. WW 970 lbs. Adj. 205D 892 lbs. Adj. 365D 1465 lbs.  
BW +0.1 WW +62 YW +107 Milk +29 TM +59

*One of the most eye appealing bulls in the entire sale, full brother to Lot 53G. ROYAL MINT can run with the best of them! His dam is an absolute powerhouse and is part of our donor dam roster. This bull, along with his brother 53G, are an outstanding pair.*



Jenna & Monique Estrada who  
handles Australia  
ALCATRAZ semen sales.



*Jenna  
Splits her time  
between her Calgary  
business and the  
Ranch*



## BAR-E-L BRONSON 90G

LOT  
90G

Male TW YHB 90G February 20 2019 2097658

D H D TRAVELER 6807  
S: O C C ECHELON 857E  
DIXIE ERICA OF CH 1019  
HF TIGER 5T  
D: BAR-E-L APRIL 82X  
BAR-E-L APRIL 85U

Q A S TRAVELER 23-4  
BEMINDFUL MAID D H D 0807  
PBC 707 1M F0203  
DIXIE ERICA OF CH 615  
HF KODIAK 5R  
HF ECHO 84R  
S A V NET WORTH 4200  
BAR-E-L APRIL 172P

BW 52 lbs. WW 735 lbs. Adj. 205D 677 lbs. Adj. 365D 1127 lbs.  
BW +0.2 WW +39 YW +75 Milk +18 TM +37

*BRONSON is a more refined, very complete made calf. Should work well in your heifer pen.*



## BAR-E-L QUIDI VIDI 93G

LOT  
93G

Male YHB 93G February 21 2019 2108505

EXAR CLASSEN 1422B  
S: EF COLOSSAL 520  
EXAR BLACKBIRD 5877  
MUSGRAVE BIG SKY  
D: BAR-E-L DUCHESS 55D  
BAR-E-L DUCHESS 174X

DAMERON FIRST CLASS  
EXAR PRINCESS 2006  
SCHURRTOP MC 2500  
EXAR BLACKBIRD 4448  
CONNELLY EARNAN 076E  
SAV PRIMROSE 7861  
HF UNDISPUTED 183U  
BAR-E-L DUCHESS 160U

BW 96 lbs. WW 815 lbs. Adj. 205D 792 lbs. Adj. 365D 1390 lbs.  
BW +3.4 WW +45 YW +78 Milk +21 TM +44

*This long bodied COLOSSAL son is packed full of meat. One of the stoutest made bulls in the entire offering. You would just love to feed a group of steers made like this guy. The DUCHESS family solidifies the quality bred into QUIDI VIDI.*



## BAR-E-L GENERATION 95G

LOT  
95G

Male YHB 95G February 21 2019 2108506

HF SIMULATOR 62Z  
S: HF G-MAN 29B  
HF ECHO 178W  
RING CREEK FLYNN 25A  
D: BAR-E-L LADY BLOSSOM 201C  
COUL LADY BLOSSOM 159'11

MCATL PURE PRODUCT 903-55  
HF EVENING TINGE 6X  
HF HEMI 151T  
HF ECHO 97K  
RING CREEK BURL IVES 88Y  
RING CREEK AMBUSH LADY 43T  
S A V HEAVY HITTER 6347  
BELVIN LADY BLOSSOM 2'07

BW 90 lbs. WW 830 lbs. Adj. 205D 786 lbs. Adj. 365D 1236 lbs.  
BW +2.6 WW +41 YW +68 Milk +21 TM +42

*One of few direct sons of HF G-MAN 29B, but he is made like all those who preceded him. Attractive made, easy doing, docile temperament, a bull that will always look good regardless of his age. The efficient, low maintenance kind.*





## BAR-E-L LANDLORD 105G

Male YHB 105G February 24 2019 2108510

CONNEALY EARNAN 076E  
S: BROOKING REAL ESTATE 6072  
500 LINE ROSE 1019  
S A V RESOURCE 1441  
D: PEDERSEN BONI GAL 425E  
PEDERSEN BONI GAL 82C

CONNEALY CONSENSUS  
BRAZILA OF CONANGA 3991 839A  
500 LINE MOTIVE 9016  
E A ROSE 918  
RITO 707 OF IDEAL 3407 7075  
S A V BLACKCAP MAY 4136  
WIL-DORR 7014T PRINCE W 1Y  
WILDMERE BONI DUCHESS 5W

BW 74 lbs. WW 790 lbs. Adj. 205D 815 lbs. Adj. 365D 1390 lbs.  
BW -1.6 WW +50 YW +95 Milk +21 TM +46

*This low birth weight REAL ESTATE son would be an excellent choice for your heifer pen. Make note of the two year old REAL ESTATE daughters pictured to the right. Tidy, perfect shaped udders with high quality milk. They will be excellent cows for years to come.*



*Also sired by REAL ESTATE, a couple of his first daughters to calve. Picture perfect udders!*



*Produced from a two year old dam, GRAND ESTATE has really performed. It is remarkable the performance we can get out of two year old females in production. You will want to give GRAND ESTATE a couple check marks for his volume and depth of side.*

## BAR-E-L GRAND ESTATE 107G

Male YHB 107G February 25 2019 2108512

CONNEALY EARNAN 076E  
S: BROOKING REAL ESTATE 6072  
500 LINE ROSE 1019  
HF G-MAN 29B  
D: BAR-E-L ERICA 142E  
XO CROWFOOT ERICA 827U

CONNEALY CONSENSUS  
BRAZILA OF CONANGA 3991 839A  
500 LINE MOTIVE 9016  
E A ROSE 918  
HF SIMULATOR 62Z  
HF ECHO 178W  
H A IMAGE MAKER 0415  
CROWFOOT ERICA 6313S

BW 98 lbs. WW 800 lbs. Adj. 205D 826 lbs. Adj. 365D 1483 lbs.  
BW +2.8 WW +51 YW +90 Milk +23 TM +49





**109G**

## BAR-E-L HIGH STAKES 109G

Male ET YHB 109G February 25 2019 2119137

EXAR CLASSEN 1422B  
S: EF COLOSSAL 520  
EXAR BLACKBIRD 5877  
S A V NET WORTH 4200  
D: BAR-E-L DUCHESS 160U  
BAR-E-L DUCHESS 116R

DAMERON FIRST CLASS  
EXAR PRINCESS 2006  
SCHURRTOP MC 2500  
EXAR BLACKBIRD 4448  
S A V 8180 TRAVELER 004  
S A V MAY 2410  
CRESCENT CREEK 06 RITO 50L  
DOUBLE FOUR DUCHESS 12G

BW 96 lbs. WW 870 lbs. Adj. 205D 817 lbs. Adj. 365D 1339 lbs.  
BW +2.7 WW +44 YW +74 Milk +23 TM +45

BAR-E-L  
DUCHESS 160U  
Dam of HIGH  
STAKES 109G

*HIGH STAKES is the first of two flush brothers by COLOSSAL out of our donor dam DUCHESS 160U. We think he has the makings of an awesome herd bull capable of siring low maintenance progeny with the ability to perform.*

*His full sister was a member of our CWA show team placing second in class. Note that the DUCHESS 160U cow has produced our high selling bull on two occasions.*



BAR-E-L  
DUCHESS 97G  
Flush mate of  
HIGH STAKES  
109G



## BAR-E-L BIG NEWS 110G

**110G**

Male DTL 110F February 25 2019 2100536

EXAR CLASSEN 1422B  
S: EF COLOSSAL 520  
EXAR BLACKBIRD 5877  
DBRL 03M TITAN 4T  
D: BAR-E-L ENCHANTRESS 157X  
BAR-E-L ENCHANTRESS 173S

DAMERON FIRST CLASS  
EXAR PRINCESS 2006  
SCHURRTOP MC 2500  
EXAR BLACKBIRD 4448  
DMM AMBUSH 03M  
DBRL BLACKBIRD 2N  
CRESCENT CREEK CHIEF 63N  
BAR-E-L ENCHANTRESS 153N

BW 86 lbs. WW 825 lbs. Adj. 205D 778 lbs. Adj. 365D 1311 lbs.  
BW +1.6 WW +34 YW +59 Milk +16 TM +33

*BIG NEWS is a COLOSSAL son built like all the rest. The ENCHANTRESS family were responsible for producing the legendary sire, BAR-E-L THOR 6T, who has made a big contribution to the Angus breed on both sides of the 49th.*





## BAR-E-L PRIME TIME 116G

Male YHB 116G February 27 2019 2108513

HF SIMULATOR 62Z  
S: HF G-MAN 29B  
HF ECHO 178W  
BAR-E-L SAFARI 18S  
D: BAR-E-L INA 159W  
BAR-E-L ESSENCE 59S

MCATL PURE PRODUCT 903-55  
HF EVENING TINGE 6X  
HF HEMI 151T  
HF ECHO 97K  
S AV SUCCESSOR 117S  
HAPPYVALE DELIA 25K  
CRESCENT CREEK 06 RITO 50L  
BAR-E-L ESSENCE 220L

BW 90 lbs. WW 855 lbs. Adj. 205D 809 lbs. Adj. 365D 1298 lbs.  
BW +3.2 WW +38 YW +58 Milk +20 TM +39

BAR-E-L LEGACY 94E  
Maternal brother to PRIME TIME 116G  
Purchased by Tom Warnyca

A well balanced, easy fleshing son of  
G-MAN again. Longevity in the cow line.  
His grand dam 59S is still in the herd.



## BAR-E-L ALL CHARGED UP 118G

Male YHB 118G February 28 2019 2108514

EXAR CLASSEN 1422B  
S: EF COLOSSAL 520  
EXAR BLACKBIRD 5877  
HF TIGER 5T  
D: HEATHER OF RING CREEK 447W  
RING CREEK 6371 LADY 7P

DAMERON FIRST CLASS  
EXAR PRINCESS 2006  
SCHURRTOP MC 2500  
EXAR BLACKBIRD 4448  
HF KODIAK 5R  
HF ECHO 84R  
STEVENSON BRUNO 6371  
HEATHER OF PEAK DOT 227M

BW 98 lbs. WW 850 lbs. Adj. 205D 812 lbs. Adj. 365D 1428 lbs.  
BW +3.0 WW +46 YW +83 Milk +23 TM +46



BAR-E-L SPECIAL EFFECT 111E  
Maternal brother to ALL CHARGED UP 118G  
Purchased by Ian Campbell



BAR-E-L KINGPIN 53F  
Maternal brother to ALL CHARGED UP 118G  
Purchased by Rafter 17 Ranch

Most will be drawn to this performance powerhouse! ALL CHARGED  
ALL has that extra skeletal scale that says 'Look at me!' His dam has  
produced seven bulls in a row, some of which are serving purebred  
operations, and include our lead off bull from last year's sale, KING  
PIN, that sold to Rafter 17 Ranch.



## BAR-E-L JESSE JAMES 119G

LOT  
119G

Male YHB 119G March 01 2019 2108515

EXAR CLASSEN 1422B  
S: EF COLOSSAL 520  
EXAR BLACKBIRD 5877  
BAR-E-L NATURAL LAW 52Y  
D: BAR-E-L BLACKBIRD 76C  
BAR-E-L BLACKBIRD 2525

DAMERON FIRST CLASS  
EXAR PRINCESS 2006  
SCHURRTOP MC 2500  
EXAR BLACKBIRD 4448  
S A V BISMARCK 5682  
BAR-E-L MAGNOLIA 143K  
CRESCENT CREEK 06 RITO 50L  
BAR-E-L BLACKBIRD 129N

BW 94 lbs. WW 805 lbs. Adj. 205D 788 lbs. Adj. 365D 1305 lbs.  
BW +3.9 WW +47 YW +77 Milk +17 TM +41

Here is a 'no holes' bull from COLOSSAL and a NATURAL LAW dam. He is built sound from the ground up. He will have the ability to cover some country. Maternal sister sold in last year's Angus Collection Sale to Belvin Angus.



## BAR-E-L CROSSFIRE 122G

LOT  
122G

Male YHB 122G March 01 2019 2108517

HF SIMULATOR 62Z  
S: HF G-MAN 29B  
HF ECHO 178W  
RING CREEK FLYNN 25A  
D: BAR-E-L GEORGINA 153C  
MV F GEORGINA 936S

MCATL PURE PRODUCT 903-55  
HF EVENING TINGE 6X  
HF HEMI 151T  
HF ECHO 97K  
RING CREEK BURL IVES 88Y  
RING CREEK AMBUSH LADY 43T  
BOYD BEEF MAKER 3069  
MV F GEORGINA 10K

BW 86 lbs. WW 860 lbs. Adj. 205D 837 lbs. Adj. 365D 1258 lbs.  
BW +2.4 WW +38 YW +62 Milk +24 TM +43

CROSSFIRE is a moderate boned, smooth made bull that you would be comfortable running with your heifer pen.



BAR-E-L EMPIRE 23E

Senior Bull Calf Champion - CWA

Maternal brother to THE PROPHET 71G selling in this year's sale







## BAR-E-L BONAFIDE 124G

Male ET YHB 124G March 01 2019 2119138

EXAR CLASSEN 1422B  
S: EF COLOSSAL 520  
EXAR BLACKBIRD 5877  
S A V NET WORTH 4200  
D: BAR-E-L DUCHESS 160U  
BAR-E-L DUCHESS 116R

DAMERON FIRST CLASS  
EXAR PRINCESS 2006  
SCHURRTOP MC 2500  
EXAR BLACKBIRD 4448  
S A V 8180 TRAVELER 004  
S A V MAY 2410  
CRESCENT CREEK 06 RITO 50L  
DOUBLE FOUR DUCHESS 12G

BW 94 lbs. WW 815 lbs. Adj. 205D 778 lbs. Adj. 365D 1351 lbs.  
BW +2.7 WW +44 YW +74 Milk +23 TM +45

*BONAFIDE is the flush brother to Lot 109G. A balanced set of performance numbers with acceptable calving ease. BONAFIDE will be very efficient at adding value to your calf crop. He will mature into a sire that you will be proud to own and easy to look at.*



BAR-E-L DUCHESS 160U  
Dam of BONAFIDE 124G





## BAR-E-L SHOWTIME 132G

Male YHB 132G March 05 2019 2108518

HF SIMULATOR 62Z  
S: HF G-MAN 29B  
HF ECHO 178W  
S A V INTERNATIONAL 2020  
D: BAR-E-L DUCHESS 53C  
BAR-E-L DUCHESS 174X

MCATL PURE PRODUCT 903-55  
HF EVENING TINGE 6X  
HF HEMI 151T  
HF ECHO 97K  
S A V HARVESTOR 0338  
S A V EMBLYNETTE 5483  
HF UNDISPUTED 183U  
BAR-E-L DUCHESS 160U

BW 86 lbs. WW 780 lbs. Adj. 205D 776 lbs. Adj. 365D 1210 lbs.  
BW +1.6 WW +43 YW +68 Milk +23 TM +45

Here is another good looking dude by \$53,000 HF G-MAN. He has done a great breeding job both at BAR-E-L and Severtson Land and Cattle. You will notice many of his daughters raising some of our very best! SHOWTIME is again backed by the prolific DUCHESS cow family.



## BAR-E-L OUTLOOK 137G

Male YHB 137G March 06 2019 2108519

S A V SEEDSTOCK 4838  
S: BAR-E-L MILLENNIUM 60E  
BAR-E-L DUCHESS 160U  
HF G-MAN 29B  
D: BAR-E-L ROSE 144D  
BAR-E-L ROSE 75B

S A V REGISTRY 2831  
S A V BLACKCAP MAY 4136  
S A V NET WORTH 4200  
BAR-E-L DUCHESS 116R  
HF SIMULATOR 62Z  
HF ECHO 178W  
BUSHY ROCK SOLID 983  
GERLEI ROSE 89Y

BW 84 lbs. WW 810 lbs. Adj. 205D 827 lbs. Adj. 365D 1383 lbs.  
BW +1.6 WW +50 YW +87 Milk +22 TM +47

BAR-E-L ROSE 75B  
Grand dam of OUTLOOK 137G

OUTLOOK is a MILLENNIUM son who topped our 2018 sale. OUTLOOK is one of the deepest bodied, widest topped bulls in the entire group.



## BAR-E-L BLUE MAX 139G

Male DTL 139G March 07 2019 2100535

HF SIMULATOR 62Z  
S: HF G-MAN 29B  
HF ECHO 178W  
DBRL 03M TITAN 4T  
D: BAR-E-L BLOSSOM 231W  
BAR-E-L BLOSSUM 22N

MCATL PURE PRODUCT 903-55  
HF EVENING TINGE 6X  
HF HEMI 151T  
HF ECHO 97K  
DMM AMBUSH 03M  
DBRL BLACKBIRD 2N  
G 13 FORTUNE 425C 8068  
BAR-E-L ENCHANTRESS 10G

BW 88 lbs. WW 760 lbs. Adj. 205D 744 lbs. Adj. 365D 1300 lbs.  
BW +2.0 WW +38 YW +67 Milk +14 TM +33

This is another G-MAN out of a TITAN dam. He is a high volume bull with added girth and substance. Back to the ENCHANTRESS cow on the bottom side only adds to his value.





## LOT 143G BAR-E-L WRANGLER 143G

Male TW YHB 139G March 08 2019 2108521

SAV INTERNATIONAL 2020  
S: BAR-E-L CUT ME LOOSE 170C  
HEATHER OF RING CREEK 447W  
HF KODIAK 5R  
D: MCNEELY LC 5R BROOKE 10B  
BROOKMORE LUCY 28X

SAV HARVESTOR 0338  
SAV EMBLYNETTE 5483  
HF TIGER 5T  
RING CREEK 6371 LADY 7P  
SANDY BAR ADVANTAGE 43M  
WILBAR RUBY 955N  
SAV NET WORTH 4200  
BROOKMORE LUCY 61N

BW 84 lbs. WW 900 lbs. Adj. 205D 895 lbs. Adj. 365D 1538 lbs.  
BW +2.9 WW +55 YW +98 Milk +20 TM +47



Most will overlook this calf due to his age, but if you look at his figures his actual weaning weight was 900 lbs. His ADJ 205 Wt. of 895 lbs. and his ADJ 365D is 1538 lbs. This makes him as impressive as any other in the sale. A great hair coat, a big square hip, WRANGLER will mature into an impressive individual like his sire has become.

## LOT 146G BAR-E-L HIGH CARD 146G

Male YHB 146G March 09 2019 2108522

SAV SEEDSTOCK 4838  
S: BAR-E-L MILLENIUM 60E  
BAR-E-L DUCHESS 160U  
BAR-E-L IRONCLAD 127A  
D: MCNEELY LC 127A LUCY 17C  
MCNEELY LC P.O.M. IVY 52A

SAV REGISTRY 2831  
SAV BLACKCAP MAY 4136  
SAV NET WORTH 4200  
BAR-E-L DUCHESS 116R  
BAR-E-L IRON WILL 32Y  
BAR-E-L TOOTS 7W  
SAV PEACE OF MIND 5070  
BROOKMORE LUCY 28X

BW 88 lbs. WW 835 lbs. Adj. 205D 840 lbs. Adj. 365D 1404 lbs.  
BW +2.2 WW +50 YW +93 Milk +22 TM +47



Another long bodied, deep sided son of our 2017 high selling bull, MILLENIUM. He will only become more impressive with time.





★★★ LOT 162G  
**BAR-E-L BIG IRON 162G**

Male YHB 162G March 19 2019 2108528

EXAR CLASSEN 1422B  
S: EF COLOSSAL 520  
EXAR BLACKBIRD 5877  
MUSGRAVE BIG SKY  
D: BAR-E-L MARY 58D  
WILGOR 3W MARY 32Z

DAMERON FIRST CLASS  
EXAR PRINCESS 2006  
SCHURRTOP MC 2500  
EXAR BLACKBIRD 4448  
CONNEALY EARNAN 076E  
SAV PRIMROSE 7861  
500 LINE GRIZZLEY 9034  
WLL MARY 3W

BW 78 lbs. WW 770 lbs. Adj. 205D 832 lbs. Adj. 365D 1404 lbs.  
BW +2.2 WW +50 YW +93 Milk +22 TM +47

*We feel BIG IRON is one of the most intriguing individuals in this bull sale lineup. He is phenotypically a standout. We originally planned to show this calf at Agribition but a case of ringworm ended that. We feel BIG IRON has a huge upside and he has the 'goods' to compete at any level.*



BAR-E-L MARY 58D  
Dam of BIG IRON 162G

LOT 171G  
**BAR-E-L UNIVERSAL 171G**

Male YHB 171G March 26 2019 2108529

CONNEALY EARNAN 076E  
S: BROOKING REAL ESTATE 6072  
500 LINE ROSE 1019  
XO CROWFOOT JOKER 8814U  
D: CROWFOOT CLOVA 2106Z  
CROWFOOT CLOVA 8086U

CONNEALY CONSENSUS  
BRAZILA OF CONANGA 3991 839A  
500 LINE MOTIVE 9016  
EA ROSE 918  
CROWFOOT JOKER 6172S  
CROWFOOT FORKS 699K  
CONNEALY FREIGHTLINER  
CROWFOOT CLOVA 6272S

BW 82 lbs. WW 810 lbs. Adj. 205D 863 lbs. Adj. 365D 1392 lbs.  
BW -0.6 WW +44 YW +78 Milk +24 TM +46

*UNIVERSAL is the natural born son of donor dam CLOVA 2106Z. You will want to keep every daughter from this son of BROOKING REAL ESTATE. Put him in your heifer pen and he will calve easy. You will be more than happy with the results.*



★★★



CROWFOOT CLOVA 2106Z  
Dam of UNIVERSAL 171G



## BAR-E-L HIGH FIVE 163G

Male ET YHB 163G March 19 2019 2116030

BROOKING BANK NOTE 4040  
S: BROOKING FIREBRAND 6068  
BROOKING ANNIE K 390  
S A V HARVESTOR 0338  
D: BROOKING BEAUTY 333  
TLA BEAUTY 6R

CONNEALY EARNAN 076E  
E A ROSE 918  
S A V BEST INTEREST 0136  
500 LINE ANNIE K 9165  
S A V HERITAGE 6295  
S A V EMBLYNETTE 7749  
RR 7407 RAINMAKER 2154  
TERRELENE BEAUTY 35F

BW 92 lbs. WW 740 lbs. Adj. 205D 776 lbs. Adj. 365D 1566 lbs.  
BW +3.6 WW +57 YW +97 Milk +28 TM +57



BROOKING BEAUTY 333  
Dam of HIGH FIVE 163G  
and MAVERICK 164G

Both HIGH FIVE and MAVERICK were purchased as embryos from Brooking Angus. They are high performance, sound footed, masculine looking bulls with great hair coats. Their full sister sold through the Brooking Open Book Invitational for \$26,500, to Dusty Rose Cattle Co. We think HIGH FIVE and MAVERICK are special calves. They will become awesome individuals as they mature.



BAR-E-L BEAUTY  
156G  
Sold in 2019  
Brooking Open Book  
Invitational to Dusty  
Rose Cattle Co.  
Flush mate to HIGH  
FIVE 163G and  
MAVERICK 164G

## BAR-E-L MAVERICK 164G

Male ET YHB 164G March 20 2019 2116031

BROOKING BANK NOTE 4040  
S: BROOKING FIREBRAND 6068  
BROOKING ANNIE K 390  
S A V HARVESTOR 0338  
D: BROOKING BEAUTY 333  
TLA BEAUTY 6R

CONNEALY EARNAN 076E  
E A ROSE 918  
S A V BEST INTEREST 0136  
500 LINE ANNIE K 9165  
S A V HERITAGE 6295  
S A V EMBLYNETTE 7749  
RR 7407 RAINMAKER 2154  
TERRELENE BEAUTY 35F

BW 94 lbs. WW 800 lbs. Adj. 205D 829 lbs. Adj. 365D 1267 lbs.  
BW +3.6 WW +57 YW +100 Milk +26 TM +55





# Two Year Old Bulls

## BAR-E-L SUPERDUTY 19F

LOT  
19F

Male YHB 19F February 01 2018 2033410

SAV REGISTRY 2831  
S: SAV SENSATION 5615  
SAV BLACKCAP MAY 4136  
HFG-MAN 29B  
D: BAR-E-L DUCHESS 137D  
BAR-E-L DUCHESS 160U

RITO 707 OF IDEAL 3407 7075  
SAV MADAME PRIDE 0075  
SAV 8180 TRAVELER 004  
SAV MAY 2397  
HF SIMULATOR 62Z  
HF ECHO 178W  
SAV NET WORTH 4200  
BAR-E-L DUCHESS 116R

BW 76 lbs. WW 730 lbs. Adj. 205D 768 lbs. Adj. 365D 1288 lbs.  
January 6 Wt. 1780 lbs.  
BW +1.2 WW +49 YW +86 Milk +21 TM +46



## BAR-E-L HIGH FIVE 81F

LOT  
81F

Male YHB 81F February 17 2018 2033458

MUSGRAVE BIG SKY  
S: BAR-E-L CUTTING EDGE 124D  
DBRL 94T BRIDE 4W  
SOUTHLAND OLD SKOOL 33T  
D: DFCC 33T BIG SEXY 45Y  
LEELA BLACK BEAUTY 8T

CONNELLY EARNAN 076E  
SAV PRIMROSE 7861  
HF ALASKAN 94T  
SANDY BAR BRIDE 74T  
SOUTHLAND FREE RIDE 68R  
RONAN DELIA 26J  
H A IMAGE MAKER 0415  
KBJ BLACK BEAUTY 586N

BW 94 lbs. WW 755 lbs. Adj. 205D 765 lbs. Adj. 365D 1270 lbs.  
January 6 Wt. 1970 lbs.  
BW +2.1 WW +54 YW +87 Milk +22 TM +49



## BAR-E-L TRADEMARK 82F

LOT  
82F

Male YHB 82F February 18 2018 2033459

RING CREEK BURLIVES 88Y  
S: RING CREEK FLYNN 25A  
RING CREEK AMBUSH LADY 43T  
HF SMOKIN' ACES 105Y  
D: BAR-E-L MIA 224C  
MIA OF RING CREEK 69Y

RING CREEK BARDOLINE 69W  
HEATHER OF RING CREEK 447W  
BASIN AMBUSH 7980  
RING CREEK 6371 LADY 1P  
GREENS PREMIUM 7578  
HF ERICA 26T  
RING CREEK BARDOLINE 69W  
MIA OF RING CREEK 22W

BW 94 lbs. WW 720 lbs. Adj. 205D 770 lbs. Adj. 365D 1231 lbs.  
January 6 Wt. 1840 lbs.  
BW +3.2 WW +42 YW +68 Milk +23 TM +44







## LOT 101F BAR-E-L KEYNOTE 101F

Male YHB 101F February 25 2018 2042031

HF DIMULATOR 62Z  
S: HF G-MAN 29B  
HF ECHO 178W  
R A F WIDE WORLD 920  
D: BAR-E-L ELITE 44Z  
BAR-E-L ELITE 885

MCATL PURE PRODUCT 903-55  
HF EVENING TINGE 6X  
HF HEMI 151T  
HF ECHO 97K  
R A F WIDELOAD 500  
R A F ESTERMERE 532  
CRESCENT CREEK 06 RITO 50L  
BAR-E-L ELITE 99J

BW 94 lbs. WW 810 lbs. Adj. 205D 735 lbs. Adj. 365D 1276 lbs.  
January 6 Wt. 1900 lbs.  
BW +3.1 WW +41 YW +67 Milk +22 TM +43



## LOT 121F BAR-E-L REAL DEAL 121F

Male ET YHB 121F March 01 2018 2075374

MUSGRAVE BIG SKY  
S: BAR-E-L CUTTING EDGE 124D  
DBRL 94T BRIDE 4W  
BUSHS ROCK SOLID 983  
D: BAR-E-L NAOMI 8B  
BAR-E-L NAOMI 60Y

CONNELLY EARNAN 076E  
SAV PRIMROSE 7861  
HF ALASKAN 94T  
SANDY BAR BRIDE 74T  
BUSHS UNBELIEVABLE 423  
BUSHS DELIGHT 7603  
BAR-E-L UNFORGIVEN 102U  
BAR-E-L NAOMI 11N

BW 96 lbs. WW 735 lbs. Adj. 205D 789 lbs. Adj. 365D 1303 lbs.  
January 6 Wt. 1975 lbs.  
BW +2.4 WW +50 YW +82 Milk +22 TM +46



## LOT 134F BAR-E-L HEAVY WEIGHT 134F

Male YHB 134F March 05 2018 2042049

SAV INTERNATIONAL 2020  
S: BAR-E-L MR TIBBS 61C  
HF TIBBIE 115S  
RING CREEK FLYNN 25A  
D: BAR-E-L ERICA 107C  
BAR-E-L ERICA 60A

SAV HARVESTOR 0338  
SAV EMBLYNETTE 5483  
HF POWER SOURCE 94M  
HF TIBBIE 90N  
RING CREEK BURL IVES 88Y  
RING CREEK AMBUSH LADY 43T  
GDAR GAME DAY 449  
BAR-E-L ERICA 22Y

BW 94 lbs. WW 660 lbs. Adj. 205D 759 lbs. Adj. 365D 1242 lbs.  
January 6 Wt. 1770  
BW +3.3 WW +47 YW +73 Milk +20 TM +44







## BAR-E-L LEADER 137F

LOT  
137F

Male YHB 137F March 05 2018 2042052

S A V INTERNATIONAL 2020  
S: BAR-E-L MR TIBBS 61C  
HF TIBBIE 1155  
H A IMAGE MAKER 0415  
D: X0 CROWFOOT ERICA 827U  
CROWFOOT ERICA 63135

S A V HARVESTOR 0338  
S A V EMBLYNETTE 5483  
HF POWER SOURCE 94M  
HF TIBBIE 90N  
HERO 6267 OF RR 2418  
H A RITO BLACKCAP 9038  
O C C LEGACY 839L  
CROWFOOT ERICA 1652L

BW 94 lbs. WW 775 lbs. Adj. 205D 845 lbs. Adj. 365D 1350 lbs.  
January 6 Wt. 1850 lbs.  
BW +1.5 WW +52 YW +83 Milk +24 TM +50



## BAR-E-L HEAVY HITTER 144F

LOT  
144F

Male YHB 144F March 07 2018 2042057

RING CREEK BURL IVES 88Y  
S: RING CREEK FLYNN 25A  
RING CREEK AMBUSH LADY 43T  
CROWFOOT JOKER 6172S  
D: CROWFOOT PRIDEMERE 2135Z  
CROWFOOT PRIDEMERE 6226S

RING CREEK BARDOLINE 69W  
HEATHER OF RING CREEK 447W  
BASIN AMBUSH 7980  
RING CREEK 6371 LADY 1P  
O C C JOKER 620J  
CFCC 1801L  
O C C LEGACY 839L  
CROWFOOT FORKS 678K

BW 94 lbs. WW 715 lbs. Adj. 205D 790 lbs. Adj. 365D 1342 lbs.  
January 6 Wt. 1910 lbs.  
BW +3.0 WW +40 YW +73 Milk +21 TM +41



## BAR-E-L PRECEDENT 149F

LOT  
149F

Male YHB 149F March 10 2018 2055006

RING CREEK BURL IVES 88Y  
S: RING CREEK FLYNN 25A  
RING CREEK AMBUSH LADY 43T  
SITZ UPWARD 307R  
D: MVF TIBBIE 96X  
MVF TIBBIE 216P

RING CREEK BARDOLINE 69W  
HEATHER OF RING CREEK 447W  
BASIN AMBUSH 7980  
RING CREEK 6371 LADY 1P  
CONNEALY ONWARD  
SITZ HENRIETTA PRIDE 81M  
WESTERN WIDESPREAD 1L  
MVF TIBBIE 192H

BW 94 lbs. WW 710 lbs. Adj. 205D 792 lbs. Adj. 365D 1342 lbs.  
January 6 Wt. 1985 lbs.  
BW +4.1 WW +39 YW +77 Milk +24 TM +44







## BAR-E-L INSIDE STRAIGHT 160F

LOT  
160F

Male YHB 160F March 18 2018 2042067

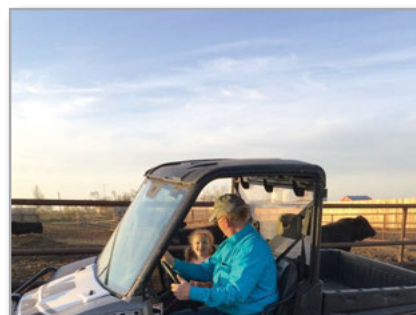
HF SIMULATOR 62Z  
S: HF G-MAN 29B  
HF ECHO 178W  
BUSH5 ROCK SOLID 983  
D: BAR-E-L DUCHESS 104B  
BAR-E-L DUCHESS 174X

MCATL PURE PRODUCT 903-55  
HF EVENING TINGE 6X  
HF HEMI 151T  
HF ECHO 97K  
BUSH5 UNBELIEVABLE 423  
BUSH5 DELIGHT 7603  
HF UNDISPUTED 183U  
BAR-E-L DUCHESS 160U

BW 76 lbs. WW 625 lbs. Adj. 205D 743 lbs. Adj. 365D 1197 lbs.  
January 6 Wt. 1805 lbs.  
BW +0.2 WW +33 YW +53 Milk +22 TM +39



BAR-E-L DUCHESS 104B  
Dam of INSIDE  
STRAIGHT 160F



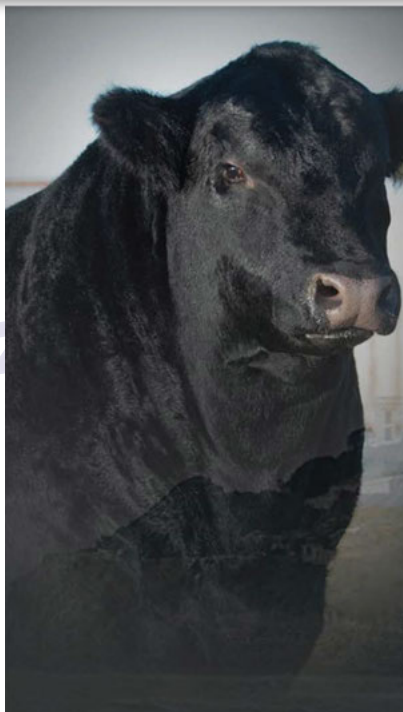
### For what it's worth...

We live in a time where a lab tech or science professor have convinced our breed leaders that our selection decisions are in their hands!  
Hair samples, genomic tests, genetic defects all have led us down a path of failure in many ways. Breeders relying on the outcome of a number to make vital mating decisions. I think some cattlemen use this data, but they don't believe in it!

At BAR-E-L our emphasis is on hard facts. Birth weight - not adjusted. Calving ease - how did it influence weaning weight. Udder quality, milk - is her calf fat in the fall without having it's head in a feeder all summer. Does that 150 Performance from weaning to yearling. Does that 150 yearling EPD mean anything? I attended the Just recently several close friends and I attended the National Western Stock Show, the largest show in North America. After we analyzed the stock for three days we broke it all down. How many bulls are on your list? Would you consider using them? We came up with two! I call that a failure!  
My point is, we are not getting better. Sound footed, nice uddered females with rich milk and mothering ability that last for years needs to be observed. Bulls that are masculine and powerful that can add pay weight to their calves are no different.

For what it's worth...my opinion.  
Dave





# ALCATRAZ

HF ALCATRAZ 60F :: REGISTERED PUREBRED ANGUS

ACT BW: 83 • ADJ WW: 782 • ADJ YW: 1504  
 DOB: JANUARY 8, 2018  
 REG#: AAA 19283566


CED	BW	WW	YW	SC	CLAW	ANGLE	MLK
4	2.3	55	101	0.73	0.25	0.33	37

CW	MAR	REA	FAT
48	0.59	0.67	0.033

SM	SW	SF	SG	SB	SC
69	65	87	49	136	245


**SIRE**

HF MAYFLOWER 1910



**DAM**

HF MAYFLOWER 1912






# ALCATRAZ

HF ALCATRAZ 60F :: REGISTERED PUREBRED ANGUS

**BAR-E-L**  
Angus

Dave & Lynne Longshore  
 Shellby, AB  
 H. 403.579.2394 C. 403.740.6788  
 Email: bar-elangus@gmail.com  
 Website: www.bar-el.com

**COWTRAX**  
CATTLE CO  
ANGUS & SIMMENTAL

Colt Kornfeldt  
 Box 30, Val Marie, SK S0N 2T0  
 306-298-7745  
 www.facebook.com/Cowtrax-Cattle-Co

**Hamilton**  
FARMS

Rob & Gail Hamilton  
 Wynne, Watson & Gentry, Joel & Taylor  
 Box 11, Site 15, RR#2, Cochrane, AB T4C 1A2  
 Ph: 403.932.5980 • Cell: 403.540.3186  
 email: angus@hamiltonfarms.ca  
 www.hamiltonfarms.ca

ALCATRAZ was the highlight of the 2019 bull sale season. This record setting sire sold for \$200,000 for 1/2 interest and possession to BAR-E-L and COWTRAX at the Hamilton Farms Bull Sale. ALCATRAZ checks all the boxes for modern day beef production. Semen is available worldwide. We will have an exciting group of sons in our 2021 spring sale.



# Open Heifers

## BAR-E-L ESSENCE 35G

LOT 35G

Female YHB 35G February 11 2019 2110269

CONNEALY CAPITALIST 028  
S: LD CAPITALIST 316  
LD DIXIE ERICA 2053  
MVF FRONTIER 17X  
D: BAR-E-L ESSENCE 101Z  
BAR-E-L ESSENCE 220L

S A V FINAL ANSWER 0035  
PRIDES PITA OF CONANGA 8821  
C A FUTURE DIRECTION 5321  
LD DIXIE ERICA 0AR 0853  
NORSEMAN FRONTIER 2'07  
MVF TIBBIE 271P  
REICH BULLET 29G  
RED BODON'S INA 1F

BW 92 lbs. WW 800 lbs. Adj. 205D 677 lbs. Adj. 365D 887 lbs.  
BW +2.2 WW +52 YW +92 Milk +22 TM +48

*This direct daughter of CAPITALIST 316, dam has been a production powerhouse. ESSENCE is long bodied, attractive in her make up. She will become a efficient producing mother cow.*



LD CAPITALIST 316  
Sire of ESSENCE 35G and MARY 68G

## BAR-E-L MARY 68G

LOT 68G

Female YHB 68G February 16 2019 2110275

CONNEALY CAPITALIST 028  
S: LD CAPITALIST 316  
LD DIXIE ERICA 2053  
500 LINE GRIZZLEY 9034  
D: WILGOR 3W MARY 32Z  
WLL MARY 3W

S A V FINAL ANSWER 0035  
PRIDES PITA OF CONANGA 8821  
C A FUTURE DIRECTION 5321  
LD DIXIE ERICA 0AR 0853  
HF KODIAK 5R  
WINDOVER QUEEN SUSAN 71P  
B C C-J C L EMBLAZON 038-287  
WLL MARY 1T

BW 88 lbs. WW 770 lbs. Adj. 205D 663 lbs. Adj. 365D 854 lbs.  
BW +2.0 WW +56 YW +99 Milk +25 TM +53

*Another 316 daughter. Extra volume and rib in this female and comes with an abundance of performance.*



BAR-E-L TRIBUTE 150F  
Maternal brother of ESSENCE 35G  
Purchased by Darren Schultz



BAR-E-L HIGHCARD 32E  
Maternal brother of ESSENCE 35G  
Purchased by Birch Meadows Colony



BAR-E-L MARY 58D  
Maternal sister of ESSENCE 35G



BAR-E-L PORTFOLIO 150C  
Maternal brother of MARY 68G  
Purchased by Dakitch Angus



## BAR-E-L TOOTS 73G

LOT  
73G

Female YHB 73G February 18 2019 2100503

EXAR CLASSEN 1422B  
S: EF COLOSSAL 520  
EXAR BLACKBIRD 5877  
HF SMOKIN' ACES 105Y  
D: BAR-E-L TOOTS 177C  
BAR-E-L TOOTS 125T

DAMERON FIRST CLASS  
EXAR PRINCESS 2006  
SCHURRTOP MC 2500  
EXAR BLACKBIRD 4448  
GREENS PREMIUM 7578  
HFERICA 26T  
S A V 004 DENSITY 4336  
GENEL TOOTS 573R

BW 72 lbs. WW 705 lbs. Adj. 205D 618 lbs. Adj. 365D 801 lbs.  
BW +0.0 WW +39 YW +60 Milk +16 TM +36

*This heifer comes from the coveted TOOTS cow family. Elegant in her look with an abundance of rib shape and volume. Her pedigree features two CWA Grand Champion Bulls with HF SMOKIN' ACES 105Y and EF COLOSSAL 520.*



BAR-E-L TOOTS 79B  
Maternal sister to the dam of TOOTS 73G  
Owned by Prairie McNeely

## BAR-E-L BLACKBIRD 84G

LOT  
84G

Female YHB 84G February 19 2019 2100507

EXAR CLASSEN 1422B  
S: EF COLOSSAL 520  
EXAR BLACKBIRD 5877  
MUSGRAVE BIG SKY  
D: BAR-E-L BLACKBIRD 3D  
BAR-E-L BLACKBIRD 63U

DAMERON FIRST CLASS  
EXAR PRINCESS 2006  
SCHURRTOP MC 2500  
EXAR BLACKBIRD 4448  
CONNEALY EARNAN 076E  
SAV PRIMROSE 7861  
S A V LEGACY 5216  
BAR-E-L BLACKBIRD 252S

BW 66 lbs. WW 730 lbs. Adj. 205D 661 lbs. Adj. 365D 757 lbs.  
BW -0.1 WW +48 YW +77 Milk +19 TM +43

*She is produced from the highly regarded BLACKBIRD cow family, who has in the past has raised our high selling bull and herdsire BAR-E-L VINDICATED 109B, as well as numerous replacement females.*



BAR-E-L BLACKBIRD 63U  
Grand dam of BLACKBIRD 84G



BAR-E-L VINDICATED 109B  
Son of BLACKBIRD 63U  
Herdsire for BAR-E-L and ARDA Farms



## BAR-E-L BIRDIE 87G

LOT  
87G

Female YHB 87G February 19 2019 2100508

EXAR CLASSEN 1422B  
S: EF COLOSSAL 520  
EXAR BLACKBIRD 5877  
HF SMOKIN' ACES 105Y  
D: BAR-E-L BIRDIE 148C  
BIRDIE OF RAINBOW HILLS 13X

DAMERON FIRST CLASS  
EXAR PRINCESS 2006  
SCHURRTOP MC 2500  
EXAR BLACKBIRD 4448  
GREENS PREMIUM 7578  
HF ERICA 26T  
S A V PIONEER 7301  
BIRDIE OF RAINBOW HILLS 91N

BW 88 lbs. WW 725 lbs. Adj. 205D 642 lbs. Adj. 365D 823 lbs.  
BW +2.8 WW +44 YW +70 Milk +19 TM +41

*We think a lot of our COLOSSAL daughters and BIRDIE is certainly no exception. A very attractive female with an abundance of capacity. When she moves into her production years, we think you will be very pleased to own her.*



BAR-E-L AMBASSADOR 127E  
Maternal brother of BIRDIE 87G  
Purchased by Darren Schultz



BAR-E-L TOP COMMAND 155D  
Maternal brother of BIRDIE 87G  
Purchased by Ian Campbell

## BAR-E-L BLACKBIRD 98G

LOT  
98G

Female YHB 98G February 22 2019 2100511

EXAR CLASSEN 1422B  
S: EF COLOSSAL 520  
EXAR BLACKBIRD 5877  
MVF FRONTIER 17X  
D: BAR-E-L BLACKBIRD 5Z  
RONAN R BLACKBIRD 455

DAMERON FIRST CLASS  
EXAR PRINCESS 2006  
SCHURRTOP MC 2500  
EXAR BLACKBIRD 4448  
NORSEMAN FRONTIER 2'07  
MVF TIBBIE 271P  
RONAN BAROS 111M  
RONAN BLACKBIRD 24M

BW 84 lbs. WW 740 lbs. Adj. 205D 649 lbs. Adj. 365D 851 lbs.  
BW -0.1 WW +35 YW +53 Milk +22 TM +40

*Another beautiful made COLOSSAL daughter. Out cross pedigree. A real asset to any herd.*



BAR-E-L BLACKBIRD 126F  
Maternal sister of BLACKBIRD 98G  
Purchased by JD Pastures Inc.



BAR-E-L BLACKBIRD 126E  
Maternal sister of BLACKBIRD 98G  
Purchased by JD Pastures Inc.





SOO LINE LADY 8058  
Dam of BAR-E-L LADY 108G



BAR-E-L ROSE 75B  
Maternal sister to the dam of ROSE 113G



S A V RESOURCE 1441  
Sire of ROSE 113G

## BAR-E-L LADY 108G

LOT  
108G

Female ET YHB 108G February 25 2019 2116258

S A V HARVESTOR 0338  
S: S A V CUTTING EDGE 4857  
S A V BLACKCAP MAY 5530  
SOO LINE YELLOWSTONE 6344  
D: SOO LINE LADY 8058  
JL LADY 06 112

S A V HERITAGE 6295  
S A V EMBLYNETTE 7749  
B C C BUSHWACKER 41-93  
S A V MAY 7238  
CUDLOBE YELLOWSTONE 80M  
ANGUS GLEN FAVORITE 9N  
S A V 004 DENSITY 4336  
LADY OF PEAK DOT 817P

BW 104 lbs. WW 850 lbs. Adj. 205D 758 lbs. Adj. 365D 1043 lbs.  
BW +4.8 WW +57 YW +100 Milk +22 TM +50

*The performance heifer in the group. With a quick look you will identify some breed legends in this pedigree, namely CUTTING EDGE, DENSITY, and YELLOWSTONE. She comes from an absolute gorgeous dam, solidifying our thoughts of cow power.*

## BAR-E-L ROSE 113G

LOT  
113G

Female YHB 113G February 26 2019 2100514

RITO 707 OF IDEAL 3407 7075  
S: S A V RESOURCE 1441  
S A V BLACKCAP MAY 4136  
BAR-E-L NATURAL LAW 52Y  
D: BAR-E-L ROSE 12C  
GERLEI ROSE 89Y

R R RITO 707  
IDEAL 3407 OF 1418 076  
S A V 8180 TRAVELER 004  
S A V MAY 2397  
S A V BISMARCK 5682  
BAR-E-L MAGNOLIA 143K  
STUART DESTINATION 325  
GERLEI ROSE 11T

BW 84 lbs. WW 785 lbs. Adj. 205D 711 lbs. Adj. 365D 854 lbs.  
BW +2.7 WW +60 YW +111 Milk +21 TM +51

*Another powerful pedigreed female combining RESOURCE with NATURAL LAW. A maternal sister sold as 'Pick of the Herd' in 2018.*



## BAR-E-L MARG 127G

LOT  
127G

Female YHB 127G March 03 2019 2100519

EXAR CLASSEN 1422B  
S: EF COLOSSAL 520  
EXAR BLACKBIRD 5877  
SOUTHLAND THRILLER 83X  
D: BAR-E-L MARG 28B  
BAR-E-L MARG 109Y

DAMERON FIRST CLASS  
EXAR PRINCESS 2006  
SCHURKTOP MC 2500  
EXAR BLACKBIRD 4448  
SOUTHLAND TWO FIFTY 250T  
SOUTHLAND BELLE 89K  
HF UNDISPUTED 183U  
BAR J P MARG 77N

BW 84 lbs. WW 745 lbs. Adj. 205D 678 lbs. Adj. 365D 850 lbs.  
BW +2.1 WW +39 YW +65 Milk +20 TM +40

*One glance and you will identify  
the femininity and elegance of the  
MARG female line has to offer.*



BAR-E-L MARG 13E

Maternal sister of MARG 127G

Sold in Brooking Open Book Invitational to Michelson Land & Cattle



BAR-E-L MARG 28B

Dam of MARG 127G

## BAR-E-L BLACKCAP 128G

LOT  
128G

Female YHB 128G March 03 2019 2100520

OCC ECHELON 857E  
S: OCC LEGACY 839L  
OCC DIXIE ERICA 960E  
SAY INTERNATIONAL 2020  
D: BAR-E-L BLACKCAP 159C  
BAR-E-L BLACKCAP 4X

DHD TRAVELER 6807  
DIXIE ERICA OF CH 1019  
OCC ANCHOR 771A  
DIXIE ERICA OF RR 4345  
SAY HARVESTOR 0338  
SAY EMBLYNETTE 5483  
HF TIGER 5T  
BAR-E-L BLACKCAP 29N

BW 86 lbs. WW 675 lbs. Adj. 205D 626 lbs. Adj. 365D 787 lbs.  
BW +2.5 WW +41 YW +71 Milk +22 TM +43

*One of two daughters of OCC  
LEGACY 839L offered in this sale,  
a sire considered to be a breed  
legend! They are their best when  
they move to their production  
years.*



OCC LEGACY 839L  
Sire of BLACKCAP 128G



BAR-E-L ALL STAR 7A  
Maternal brother of BLACKCAP 128G  
Purchased by Sandy Bar



## BAR-E-L ERICA 133G

LOT  
133G

Female YHB 133G March 05 2019 2100522

HF SIMULATOR 62Z  
S: HF G-MAN 29B  
HF ECHO 178W  
GDAR GAME DAY 449  
D: BAR-E-L ERICA 60A  
BAR-E-L ERICA 22Y

MCATL PURE PRODUCT 903-55  
HF EVENING TINGE 6X  
HF HEMI 151T  
HF ECHO 97K  
BOYD NEW DAY 8005  
GDAR MISS WIX 474  
SAV 004 DENSITY 4336  
HF ERICA 28W

BW 80 lbs. WW 720 lbs. Adj. 205D 658 lbs. Adj. 365D 860 lbs.  
BW +0.6 WW +43 YW +69 Milk +21 TM +46

*Possibly the softest made,  
easiest doing female in this  
group of sale heifers, typical  
of the G-MAN daughters.*



HF G-MAN 29B  
Sire of ERICA 133G

## BAR-E-L NAOMI 140G

LOT  
140G

Female YHB 140G March 08 2019 2100525

EXAR CLASSEN 1422B  
S: EF COLOSSAL 520  
EXAR BLACKBIRD 5877  
MUSGRAVE BIG SKY  
D: BAR-E-L NAOMI 36D  
BAR-E-L NAOMI 83U

DAMERON FIRST CLASS  
EXAR PRINCESS 2006  
SCHURRTOP MC 2500  
EXAR BLACKBIRD 4448  
CONNEALY EARNAN 076E  
SAV PRIMROSE 7861  
SAV NET WORTH 4200  
BAR-E-L NAOMI 11N

BW 86 lbs. WW 675 lbs. Adj. 205D 657 lbs. Adj. 365D 857 lbs.  
BW +3.1 WW +36 YW +66 Milk +22 TM +40

*A quick look and you can understand why  
we really appreciate the NAOMI cow family.  
BAR-E-L NAOMI 27C, maternal sister to the  
dam, is one of the herd favorites and in our  
donor pen.*



BAR-E-L NAOMI 27C  
Daughter of NAOMI  
83U. Donor dam at  
BAR-E-L



# LOT 152G BAR-E-L ERICA 152G

Female YHB 152G March 13 2019 2100527

O C C ECHOLON 857E	D H D TRAVELER 6807
S: O C C LEGACY 839L	DIXIE ERICA OF CH 1019
O C C DIXIE ERICA 960E	O C C ANCHOR 771A
S A V HARVESTOR 0338	DIXIE ERICA OF R R 4345
D: BAR-E-L ERICA 163B	S A V HERITAGE 6295
BAR-E-L ERICA 176X	S A V EMBLYNETTE 7749
	HF UNDISPUTED 183U
	GENEL ERICA 433P

BW 82 lbs. WW 700 lbs. Adj. 205D 663 lbs. Adj. 365D 801 lbs.  
BW +1.5 WW +36 YW +66 Milk +22 TM +40

*This daughter of O C C LEGACY 839L is a maternal sister to last year's high selling female to JD Pastures Inc.. Collect all the LEGACY daughters you can get your hands on! You will be glad you did.*



BAR-E-L ERICA 64F  
Maternal sister of ERICA 152G  
Purchased by JD Pastures Inc.



*Tanis, Travis  
Marny,  
Rylyn & Kylie  
A big part of our  
team!*







*Dallas, Eliza  
Denver,  
Olivia & Boston  
Part of everything we do!*

## *Thank you to our 2019 Buyers!*

*We truly appreciate your confidence in our genetics.*

Abraham Land & Cattle  
Anchorage Angus  
Jim Barss  
McCutcheon Farms  
Byemoor Colony  
Paul & Jackie Dobinson  
Chapman Cattle Co.  
Circle G  
Everblack Angus  
Freeway Angus  
Arda Farms  
Hahn Cattle Company  
Hamilton Farms  
Dusty Rose Cattle Co.

Riley Helmer  
Travis Henderson  
Dewey & Jordan Hooper  
Jayron Wiens  
JD Pastures Inc.  
Lake Thelma Farms  
Roberto Landeros  
Dale McNabb  
George & Colleen McNeely  
Kristan Moebis  
Lance Neilson  
George Paillard  
Silver Willow Ranch  
Zane Radefeldt

Rafter 17 Ranch  
Riverfront Angus  
Ryan Creek Farm  
Sauter Ranches Inc.  
Ryan Schilling  
Darren Schultz  
Ter-ran Farms  
Leonard Tufty  
W Sunrise Angus  
Whiskey Lane Livestock  
Birch Meadow Colony  
Huxley Colony  
Clement Cote Farms





## EF COLOSSAL 520

Reference  
**REF**

Male ET ESE 20C January 04 2015 1849214

DAMERON FIRST CLASS  
S: EXAR CLASSEN 1422B  
EXAR PRINCESS 2006  
SCHURRTOP MC 2500  
D: EXAR BLACKBIRD 5877  
EXAR BLACKBIRD 4448

EXGRS FIRST RATE 9903 R3  
DAMERON NORTHERN MISS 3114  
EXAR LUTTON 1831  
GREENS PRINCESS 1012  
SCHURRTOP MC  
SCHURRTOP RS 1413 2153  
EXAR LUTTON 1831  
WK BLACKBIRD 7308

BW 83 lbs. WW 845 lbs. Adj. 205D lbs. Adj. 365D lbs.  
BW +2.7 WW +44 YW +72 Milk +19 TM +41

We purchased COLOSSAL from a very nice family, the Enrights in Ontario, in 2018. I first saw COLOSSAL at the Barrie Fair where he was Grand Champion Bull. He later won Agribition and the new Champion of the World competition over All Breeds that fall. With this first group of sons, you can easily see his influence and consistency! Long spine, thick made bulls with great hair, scrotal and foot quality. We anxiously await his daughters in production! We think the COLOSSAL story is just beginning!



## HF G-MAN 29B

**REF**

Male HAMI 29B January 14 2014 1809288

MCATL PURE PRODUCT 903-55  
S: HF SIMULATOR 62Z  
HF EVENING TINGE 6X  
HF HEMI 151T  
D: HF ECHO 178W  
HF ECHO 97K

CONNEALY FINAL PRODUCT  
M A ESTA 55-252  
HF TIGER 5T  
SWEETWATER EVENING TINGE 13R  
S A V 004 PREDOMINANT 4438  
HF TIBBIE 100M  
GREENS PREMIUM 7578  
DURALTA 14C ECHO 32E

BW 88 lbs. WW 810 lbs. Adj. 205D 764 lbs. Adj. 365D 1323 lbs.  
BW +2.8 WW +45 YW +69 Milk +20 TM +43

G-MAN was the high selling bull in the 2015 Hamilton Farms Bull Sale. Purchased with Severtson Land & Cattle and Rafter 17 Ranching for \$56,000 for 2/3 interest. His progeny are soft made, easy fleshing and very consistent in their type. His daughters display near perfect udder quality and will be excellent mothers for years to come! Several of his best sons are available for your appraisal in this year's sale.

## LD CAPITALIST 316

**REF**

Male IMP 1316A January 26 2013 2025732

S A V FINAL ANSWER 0035  
S: CONNEALY CAPITALIST 028  
PRIDES PITA OF CONANGA 8821  
C A FUTURE DIRECTION 5321  
D: LD DIXIE ERICA 2053  
LD DIXIE ERICA 0AR 0853

SITZ TRAVELER 8180  
S A V EMULOUS 8145  
C R A BEXTOR 872 5205 608  
PRIDES TRAY OF CONANGA 6499  
G A R PRECISION 1680  
C A MISS POWER FIX 308  
LD ROYCE ONAROLL 810  
DIXIE ERICA OF R R 8553

BW 78 lbs. WW 759 lbs. 365D 1340 lbs.  
BW -0.2 WW +52 YW +98 Milk +22 TM +48

CAPITALIST 316 is a legendary sire being used world wide. His progeny in this sale would be part of a small group in Canada. His progeny prove why Capitalist 316 is in high demand! Standing on a perfect foot, his structure and soundness are flawless. 316 stamps his calves with a look of style and quality with added muscle and performance - progeny are wide based, dense and consistent! Elite calving-ease sire with exceptional growth and looks. The final proof - 316 daughters have beautiful udders and are super easy fleshing, with an average nursing ratio of 103!







## Reference REF

### ELLINGSON HOMEGROWN 6035

Male IMP 6035D February 20 2016 2013648

CONNEALY THUNDER	BALDRIDGE KABOOM K243
S: CTS REMEDY 1T01	PARKA OF CONANGA 241
CTS 7V03 BELLEMERE MAID 9T02	LT 598 BANDO 9074
ELLINGSON FORMAT 2205	SVA RITA 7V03 OF 1407 502
D: EA BLANCHE 4137	LT TERRITORY 5824 OF EA
EA BLANCHE 1137	EA EMBLYNETTE 9184
	TC ABERDEEN 759
	EA BLANCHE 7921

BW 70 lbs. WW 921 lbs. 365D 1455 lbs.  
BW +1.3 WW +58 YW +111 Milk +33 TM +62

*HOMEGROWN was introduced to add calving ease, lower birth and high maternal values. His first calves have given us just that and more. We think you will agree.*

*His sons are born easily, perform well, and they possess excellent foot quality.*

## BROOKING REAL ESTATE 6072 REF

Male JSTN 72D February 01 2016 1926673

CONNEALY CONSENSUS	KMK ALLIANCE 6595 187
S: CONNEALY EARNAN 076E	BLINDA OF CONANGA 004
BRAZILA OF CONANGA 3991 839A	CONNEALY TOBIN
500 LINE MOTIVE 9016	BREESSHA OF CONANGA 1251
D: 500 LINE ROSE 1019	HF KODIAK 5R
EA ROSE 918	TLA BEAUTY 5R
	S A V FINAL ANSWER 0035
	EA ROSE 738

BW 73 lbs. Adj. 205D 774 lbs. Adj. 365D 1342 lbs.  
BW -0.2 WW +52 YW +98 Milk +22 TM +48

*We purchased REAL ESTATE in 2017 from Brooking Angus for \$47,000. We were looking for a bull that combined calving ease with performance and great maternal values. We think we have been successful in meeting our goal. REAL ESTATE combines the power and performance of CONNEALY EARNAN 076E and EA ROSE 1019, back to EA ROSE 918 making REAL ESTATE a 3/4 brother to BROOKING BANKNOTE 4040.*

*His first daughter sold in the Open Book Invitational for \$11,000 to KCH Cattle Co. His first daughters are calving now. We could not be happier with their udder quality and mothering instinct. Co-owned with McCutcheon Farm Ltd.*



## BAR-E-L CUTTING EDGE 124D REF

Male ET YHB 124D February 25 2016 1933351

CONNEALY EARNAN 076E	CONNEALY CONSENSUS
S: MUSGRAVE BIG SKY	BRAZILA OF CONANGA 3991 839A
SAV PRIMROSE 7861	S A F 598 BANDO 5175
HF ALASKAN 94T	S A V PRIMROSE 8244
D: DBRL 94T BRIDE 4W	HF KODIAK 5R
SANDY BAR BRIDE 74T	HF ECHO 112R
	VALLEY BLOSSOM LIGHTENING 706P
	SANDY BAR BRIDE 51K

BW 86 lbs. WW 760 lbs. Adj. 205D 767 lbs. Adj. 365D 1306 lbs.  
BW +0.7 WW +51 YW +79 Milk +20 TM +46

*CUTTING EDGE sold in our 2017 Bull Sale to Dustin Ballantyne and Jeff Jamieson. This BIG SKY son combines the best of both parents in BIG SKY AND BRIDE 4W. This moderate framed, thick, muscular bull breeds with unmatched consistency and does a great job of siring high quality sons and daughters. His first daughters are calving. We really appreciate their mothering instincts, udder quality and milk flow.*





Reference

REF

## BROOKING FIREBRAND 6068

Male JSTN 68D January 31 2016 1906246

CONNEALY EARNAN 076E	CONNEALY CONSENSUS
S: BROOKING BANK NOTE 4040	BRAZILA OF CONANGA 3991 839A
E A ROSE 918	S A V FINAL ANSWER 0035
S A V BEST INTEREST 0136	E A ROSE 738
D: BROOKING ANNIE K 390	S A V BISMARCK 5682
S00 LINE ANNIE K 9165	S A V EMBLYNETTE 8172
	BAR-E-L THOR 6T
	S00 LINE ANNIE K 6271

BW 85 lbs. Adj. 205D 927 lbs. Adj. 365D 1481 lbs.  
BW +3.9 WW +57 YW +93 Milk +27 TM +56

*FIREBRAND is a powerhouse! He stands on all corners on a near perfect foot. His volume and muscle mass are unparalleled by most in the Angus breed. His progeny are highly sought after and will become real assets to your herd.*

## BAR-E-L MR TIBBS 61C

REF

Male YHB 61C February 17 2015 1871416

S A V HARVESTOR 0338	S A V HERITAGE 6295
S: S A V INTERNATIONAL 2020	S A V EMBLYNETTE 7749
S A V EMBLYNETTE 5483	S A V 8180 TRAVELER 004
HF POWER SOURCE 94M	S A V EMBLYNETTE 7260
D: HF TIBBIE 1155	RIVERBEND POWERLINE 0050
HF TIBBIE 90N	DURALTA 14C ECHO 32E
	GREENS PREMIUM 7578
	HF TIBBIE 50D

BW 90 lbs. Adj. 205D 810 lbs. Adj. 365D 1390 lbs.  
BW +3.1 WW +56 YW +87 Milk +17 TM +45

*MR TIBBS was our choice of the INTERNATIONAL sons from our 2015 calf crop. We sold 1/2 interest to ARDA Farms in our 2016 Bull Sale. MR TIBBS is a consistent sire of moderate birth, easy fleshing, deep ribbed sons and features the TIBBIE cow family. He is one of our best to-date! We really appreciate his daughters in production. Certainly a step up from his sire.*



## BAR-E-L CUT ME LOOSE 170C

REF

Male YHB 170C March 12 2015 1871442

S A V HARVESTOR 0338	S A V HERITAGE 6295
S: S A V INTERNATIONAL 2020	S A V EMBLYNETTE 7749
S A V EMBLYNETTE 5483	S A V 8180 TRAVELER 004
HF TIGER 5T	S A V EMBLYNETTE 7260
D: HEATHER OF RING CREEK 447W	HF KODIAK 5R
RING CREEK 6371 LADY 7P	HF ECHO 84R
	STEVENSON BRUNO 6371
	HEATHER OF PEAK DOT 227M

BW 99 lbs. Adj. 205D 897 lbs. Adj. 365D 1580 lbs.  
BW +4.6 WW +67 YW +121 Milk +24 TM +58

*Most marvel at the power and muscle mass of this INTERNATIONAL son, CUT ME LOOSE. He was one of the top herdsire candidates in our 2016 sale. We purchased an interest back to implement in our program. Be sure to check out his maternal brother, Lot 118G.*





# **OCC LEGACY 839L**

REF

Male IMP 839L September 09 2001 1193688

DHD TRAVELER 6807  
S: OCC ECHELON 857E  
DIXIE ERICA OF CH 1019  
OCC ANCHOR 771A  
D: OCC DIXIE ERICA 960E  
DIXIE ERICA OF R R 4345

QAS TRAVELER 23-4  
BEMINDFUL MAID DHD 0807  
PBC 707 1M F0203  
DIXIE ERICA OF CH 615  
DHD TRAVELER 6807  
OCC JUANADA 709V  
SHOSHONE VANTAGE JB23  
DIXIE ERICA OF R R 9275

BW 86 lbs. WW 841 lbs. 365D 1406 lbs.  
BW +1.0 WW +29 YW +55 Milk +21 TM +36

We have added both OCC LEGACY and OCC ECHELON in a small way to our breeding program because of their strong maternal influence. We love the foot quality, superior udder, milk flow bred into these sires. We feel they are very complimentary to the cows we have put them on. Any chance you can add these genetics to your herd, you will see the benefits.



# **OCC ECHELON 857E**

REF

Male IMP 857E March 20 1995 1079153

QAS TRAVELER 23-4  
S: DHD TRAVELER 6807  
BEMINDFUL MAID DHD 0807  
PBC 707 1M F0203  
D: DIXIE ERICA OF CH 1019  
DIXIE ERICA OF CH 615

BAND 234 OF IDEAL 3163  
QAS BLACKBIRD EVE 601 1  
PBC 707 1M F0203  
BEMINDFUL MAID OF R R 1079  
R R RITO 707  
EVOCATE PRINCESS T  
SCHEARBROOK EMULOUS 11N7  
R R DIXIE ERICA OF CH 447

BW -1.8 WW +34 YW +61 Milk +16 TM +33

# **SAV RESOURCE 144I**

REF

Male IMP 1441Y January 07 2011 1707295

R R RITO 707  
S: RITO 707 OF IDEAL 3407 7075  
IDEAL 3407 OF 1418 076  
SAV 8180 TRAVELER 004  
D: SAV BLACKCAP MAY 4136  
SAV MAY 2397

RITO N BAR  
ERISKAY OF ROLLIN ROCK 3  
IDEAL 1418 OF 8103 4286  
IDEAL 076 OF 692 8375  
SITZ TRAVEKER 8180  
BOYD FOREVER LADY 8003  
SAF 598 BANDO 5175  
SAV MAY 7238

BW 83 lbs. WW 920 lbs. 365D 1367 lbs.  
BW +4.0 WW +70 YW +133 Milk +19 TM +54

One of the most iconic bulls in the breed; RESOURCE is a most popular sire due to his ability to sire growth, carcass merit and maternal ability in a desirable package. RESOURCE brings to the table the basics of efficiency and natural fleshing ability, with thickness, muscle, masculinity, superb structure, feet quality and authentic breed character. RESOURCE sons have unprecedented performance and industry appeal, while his daughters are making superb brood cows with high quality udders and abundant milk. RESOURCE daughters are prized assets in breeding programs that admire eye-appealing, highly productive females that are easy to be around.

# **BAR-E-L MILLENIUM 60E**

REF

Male YHB 60E February 09 2017 1982093

SAV REGISTRY 2831  
S: SAV SEEDSTOCK 4838  
SAV BLACKCAP MAY 4136  
SAV NET WORTH 4200  
D: BAR-E-L DUCHESS 160U  
BAR-E-L DUCHESS 116R

RITO 707 OF IDEAL 3407 7075  
SAV MADAME PRIDE 0075  
SAV 8180 TRAVELER 004  
SAV MAY 2397  
SAV 8180 TRAVELER 004  
SAV MAY 2410  
CRESCENT CREEK 06 RITO 50L  
DOUBLE FOUR DUCHESS 12G

BW 80 lbs. Adj. 205D 809 lbs. Adj. 365D 1480 lbs.  
BW +1.4 WW +58 YW +102 Milk +23 TM +52

MILLENIUM was the high selling bull in our sale in 2018 to McCutcheon Farms. The two sons in this sale are perfect examples of the power and quality bred into this young sire. A quick review of the pedigrees throughout this catalogue, it's easy to identify the influence of his dam, DUCHESS 160U, and the cow family behind her.







Reference

REF

## RING CREEK FLYNN 25A

Male PHE 25A March 07 2013 1754356

RING CREEK BARDOLENE 69W  
S: RING CREEK BURL IVES 88Y  
HEATHER OF RING CREEK 447W  
BASIN AMBUSH 7980  
D: RING CREEK AMBUSH LADY 43T  
RING CREEK 6371 LADY 1P

SASKALTA BARDOLENE 188T  
RING CREEK HOBSON 31S  
HF TIGER 5T  
RING CREEK 6371 LADY 7P  
BASIN AMBUSH 5277  
BASIN CHLOE 387G  
STEVENSON BRUNO 6371  
ROSILLA OF PEAK DOT 244M

BW 86 lbs. Adj. 205D 740 lbs. Adj. 365D 1230 lbs.  
BW +2.9 WW +38 YW +69 Milk +23 TM +42

*FLYNN is a resident herd sire at BAR-E-L and has been used with great success! He is exactly what his picture tells you. A stout, heavy muscled bull who is masculine, attractive made, and structurally very sound. His daughters are raising some of our best.*



Joe McLean  
Beef Consultant  
403-393-3302

Doug Roxburgh  
Beef Consultant  
403-392-4541

Kelly Resler  
Beef Consultant  
403-506-7474

Trevor Hamilton  
Beef Consultant  
403-586-1114

Tom McNeely  
Co-Founder  
780-679-7220

Mark Cameron  
VP of Nutrition  
and Consulting  
403-360-1669

It is a pleasure having worked the past 2 decades with one of the great Canadian seedstock producers, Dave & Lynne Longshore, Bar EL Angus. The attention to detail is evident throughout their operation and their dedication to the seedstock industry shines through. The purchase of the \$200,000 bull Alcatraz, shows their commitment to never stop improving.

The cow herd utilize a customized mineral program that is balanced throughout the year. This helps in the proper development of the bull calves at a young age. The bulls feeding

program is built to maximize forage utilization and gut health. The bulls are developed on grass with their moms and then moved onto a balanced TMR that promotes lean muscle growth. Organic minerals are used to ensure proper immune function and over all health of the bulls. The overall nutritional health and development of the bulls and the entire cow herd is of utmost importance and is constantly being tweaked to meet environmental and seasonal conditions.

If you have any questions about the nutrition on this elite herd please contact me at any time.



**Tom McNeely**  
Co-Founder  
(780) 679-7220  
tomj.mcneely@bullseyefeeds.ca



Thank you to Tom and Bullseye for sponsoring our 2019 High Selling Bull Jacket - Brad McCutcheon - McCutcheon Farms.



Thank you to Tom and Bullseye for sponsoring our 2019 Volume Buyer Jacket - Dave Swain - JD Pastures Inc.





**BAR-E-L DUCHESS 97G**  
2019 CWA  
*Flush mate to CUSTOM MADE 53G and ROYAL MINT 88G*



**BAR-E-L ICEBERG QUEST 75G**  
2019 CWA



**BAR-E-L CUSTOM MADE 53G**  
*Intermediate Bull Calf Champion*  
2019 CWA



**HF ALCATRAZ 60F**  
*On display in the yards at the*  
2020 National Western Stock Show.  
*Thank you to Hamilton Farms for making this happen!*



*Congratulations to Brooking Angus for breeding and with Dusty Rose Cattle Co. for exhibiting the 2019 CWA RBC Supreme Challenge Champion Female, a daughter of BAR-E-L NATURAL LAW 52Y.*



*Congratulations to Blairs.Ag for exhibiting and Popular Meadows Angus for breeding the 2018 CWA RBC Supreme Challenge Champion Female, a daughter of BAR-E-L NATURAL LAW 52Y.*



**Return Undeliverable  
Canadian Addresses To:**

**Bar-E-L Angus  
Box 2056 Stettler, Alberta T0C 2L0**

