

# ***RICHMOND RANCH***



## ***Bull & Female Sale***

***Friday March 9, 2018 at the Ranch, Rumsey AB***





# RICHMOND RANCH

21<sup>st</sup> Annual Bull & Female Sale

1:00 p.m. Friday March 9<sup>th</sup>

@ The Ranch, Rumsey AB

## Welcome Cattlemen

Well it is that time of year again to think about re-stocking your herd bull pen. It is with immense pride that we welcome you to our 21st Annual Bull & Female Sale. It could never be stated enough but we would like to once again thank our past buyers, bidders, neighbours, friends and family for their continuous support in our program. The cattle business has been our passion and way of life for five generations now. Being a family run operation, we take considerable pride in our cattle and strive to raise the best for the industry. Here at Richmond Ranch we believe in the strength of cow families and have emphasized only to have the elite females retained into the herd. We have put a heavy focus on structure, soundness, udder quality, maternal ability and that deep broody look that every cattleman desires in their herd. You can be certain that behind this set of stout bulls is a very impressive, hardworking and productive set of females. This year we are very proud of our offering and feel even more privileged to be your herd bull source. We hope that you will mark your calendars and join us Sale day where you will find over 150 Lots on offer; Black Angus, Red Angus, Limousin, & Lim-Flex. You will find over 60 grass-born two-year olds, 40 performance tested yearlings, a feature of 50 open and bred females as well as over 100 commercial heifers. Between the three breeds there will be a variety of bulls with a selection of traits including calving ease, growth and performance that will add to your weaning weights in the fall. Feel confident in the purchase of a Richmond bull to leave great maternal features you will want to pass on to your replacement females. We make our living by selling bulls so it is always such a compliment when every year we have so many repeat customers. Understanding the importance of your investment in a herd bull along with the expectations that come with that, we would like to assist you in any way that we can to make your selection easier. We want you to feel at ease after purchasing a bull from us because we will do everything to ensure your satisfaction from the time the hammer falls until you have calves on the ground. We believe that quality shouldn't be just a goal, but a standard. Richmond Ranch; based on longevity, quality and integrity. Give us a call or feel free to stop in for a visit and a tour at any time. Come early to view the bulls, the brood cows that raise them, and the powerful herd sires behind them. Enjoy coffee & donuts all morning and a steak lunch prior to the sale. We will have updated weights and scrotal measurements available sale day. From all of us here at Richmond Ranch, we hope to see you all once again sale day.

Sincerely,  
The Richmond Family

Jim & Stephanie

Tiffany

Samantha, Brandon, & Cole



[www.richmond ranch.com](http://www.richmond ranch.com)



# *Table of Contents*

## *Limousin*

Yearlings.....	Pages 8 -11
Two-Year Olds.....	Pages 12-41
Females.....	Pages 42-50

## *Commercial*

Bred Females.....	Page 51
Open Females .....	Pages 52-55

## *Red Angus*

Two-Year Olds.....	Pages 58-59
Yearlings.....	Pages 60-63
Open Females .....	Page 64

## *Black Angus*

Two-Year Olds.....	Pages 66-71
Yearlings.....	Pages 72-79
Open Females .....	Pages 80-83
Bred Females.....	Pages 84-85

# *151 Lots Selling!*

*Featuring an elite offering of Limousin,  
Black Angus & Red Angus Genetics.*





Welcome to the 21st Annual Production sale here at Richmond Ranch. T Bar C is thrilled to be involved with the Richmond family in conducting their sale and endorsing this first-class operation that is well known to the purebred and commercial communities.

The Richmond family does not strive to produce quality cattle, they demand it. Their herd bull battery is one of the finest in the entire nation. Whether it is Limousin, Red or Black Angus, you cannot help but be impressed by the quality of the herd bulls they use. Zodiac is one of the softest sided, stoutest Limousin bulls you will stumble across. His best attribute might be his mother; 6X is one of the top cows in the entire breed and has proved it more than once or twice. The Red Angus section is headed up by the \$20,000 Anthem that has created quite a stir; deep bodied and dark red...a true herd bull. Decisive has been a pillar in their introduction to the Black Angus world. The most exciting in their herd bull pen might just be Believe! This year you will see the largest offering ever assembled by the Canadian record breaking Believe. An unbelievable bull to look at in the flesh; please study his progeny, they have that Jim Richmond look to them!

With over 100 bulls being offered and many coming two-year-olds, be sure to study this catalog. The Richmonds have a very strict culling process. Their cattle are quite easy to work with, and with some 400 mother cows you can rest assure only the top section of each calf crop make the cut for the sale.

The Limousin bulls being offered are the backbone of this operation, one of the largest offerings in all of Canada. This is a deep, soggy set that has annually had the attention of many respected cattlemen; please make sure to look these guys up. The Angus section has been aggressively growing, adding not only influential sires but top females from across the nation that make up this fantastic set selling.

The female portion of the offering is quite unique.... it will be your chance to add some very well pedigreed Limousin females, either open or long in calf from the popular spring calving herd. The dozen Angus females selling are from the heart of the replacement pen; many breed leading cow families, EPD charts and pedigrees that the most discriminating buyer will crave. Have a close look to these front end females.

To conclude, please join us at the ranch in Rumsey to evaluate one of the highest respected herds on the continent. These cattle will not disappoint in the real life and are backed up by one of the greatest families to deal with. We at T Bar C are quite familiar with the offering, so please don't hesitate with any questions or handling any sight unseen orders, these will be handled 100% confidentially.

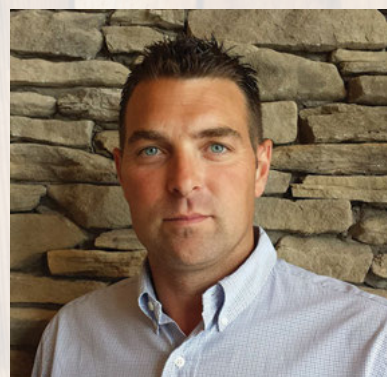
See you in Rumsey,  
Ben Wright



**Chris Poley**  
**306-220-5006**



**Ben Wright**  
**519-374-3335**



**Shane Michelson**  
**403-363-9973**



**Sales Management**  
**T Bar C Cattle Co. Ltd.**  
P.O Box 2330  
Warman, SK S0K 4S0  
Office: 306-933-4200  
info@tbarc.com  
www.buyagro.com



## Sales Representatives:

### Auctioneers:

Dan Skeels. ....403-783-1217

Chris Poley.....306-220-5006

### Ring Staff:

Ben Wright.....519-374-3335

Dean Edge .....403-704-0280

Mark Stock.....403-357-8104

Shane Michelson.....403-363-9973

### Sale Day Phones:

Jim's Cell.....403-323-8433

Tiffany's Cell.....403-740-3748

Stephanie's Cell.....403-323-7269

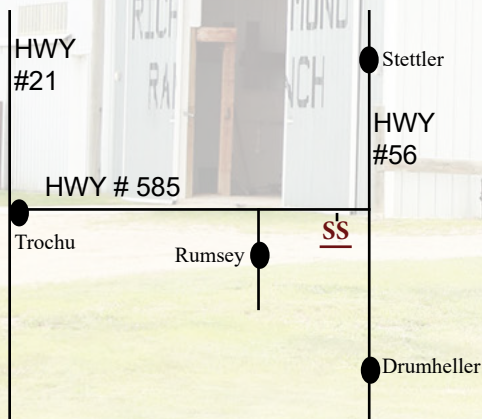
Samantha's Cell .....403-741-7262

Brandon's Cell.....403-741-2675

Joe Ferris .....250-558-8745

Home.....403-368-2103

Barn.....403-368-2139



### Hotel Accomodations

Stettler Ask for the Richmond Ranch block of rooms.

Canalta - 888-742-5808 Ramada - 403-742-6555

Other accomodation possibiltities include...

Drumheller - 30 min South of the Ranch

Olds - One hour West of the Ranch.

### Trucking

H.S Knill Transport: 877-442-3106

### Special Guests:

Brett Wildman, President Canadian Angus Association

Blake Morton, President Alberta Angus Association

Rob Smith, CEO Canadian Angus Association

Brian Good, Canadian Angus Association

Tessa Verbeek, CEO Canadian Limousin Association

Erin Kishkan, President Canadian Limousin Assoc.

Chris Haywood, President Alberta Limousin Association

## Schedule of Events:

### Wednesday March 7th

Open house, cattle available for viewing.

### Thursday March 8th

Open house, cattle available for viewing.

### Friday March 9th

9:00 am Viewing of Sale Cattle

11:30 am Complimentry Steak Lunch

1:00 pm Richmond Ranch Bull & Female Sale

Hospitality to follow the sale.

**Sale Location:** The sale will be held at the Ranch, 5 miles East of Rumsey, AB.

**Directions from Stettler:** go South on HWY 56 about 60kms. Turn West onto HWY 585, go 1 mile and the farm is on the South side of the road on RgRd 202.

**Directions from Trochu:** go East on HWY 585 about 40kms. The farm is on the South side of the HWY on RgRd 202.

**Directions from Drumheller:** go North on HWY 56 about 60kms. Turn West onto HWY 585, go 1 mile and the farm is on the South side of the road on RgRd 202.

## STOCKMENS INSURANCE

Larry Toner

Phone (306)932-4866

Cell (306)834-7652

Email: larrytoner@xplornet.com

## Can't make it to the sale? Internet Bidding Available.

To view this sale visit [www.dlms.ca](http://www.dlms.ca), Fill out the registration form located under registration and sign-up for your free user account and select a username and password.

**BIDDERS** - To be approved as a bidder, Log in to [dlms.ca](http://dlms.ca) and click BUYER APPROVAL tab, select the sale you are interested in bidding at and click sign up.

For more information

Call DLMS Reps:

Whitney Bosovich 780.991-3025

Mark Shologan 780.699.5082

**DLMS**  
[www.dlms.ca](http://www.dlms.ca)



### **Richmond Ranch Guarantee: We stand behind our cattle 100%**

**Calving Rating or CR:** We have taken into consideration our knowledge on the cow families, calving histories, birth weight, and phenotypical shape to help you better select a herd bull based on your calving needs. These numbers are not calculated; they are an estimate based on how we ourselves would use the bull if we were breeding our own cows. \*All Bulls are guaranteed to calve easy on cows\*

1 = Recommended for use on cows only.

2 = May be used on heifers with a family history of calving ease. Could be used safely on all cows.

3 = Could be safely used on heifers.

**Sight Unseen Purchase Plan:** If you are unable to attend sale day, we would be more than happy to assist you in your sale selection. Please feel free to contact any of the Richmond Family or any member of the sales staff. Every effort will be made to buy you the right bull or bulls, at the right price to make you a repeat customer.

**Delivery Program:** We encourage you to discuss arrangements prior to the sale. Bulls will be delivered free of charge to central points in Western Canada at Richmond Ranches convenience and at owner's risk. For cattle going to Eastern Canada or the US, we will arrange trucking at minimal cost. If this delivery time is not convenient for the buyer, the bulls will be kept free of charge until the buyer can pick-up the bull(s) at their convenience. Richmond Ranch recommends that all bulls left are to be insured.

**Richmond Docility Rating or DOC:** This docility rating has been established to help you determine the temperament and manageability of the bulls. We as breeders strive to hold our livestock to a high standard and that includes docility. In our program, we do not tolerate any problem animals and feel you should not either. No one knows these cattle better than us and throughout the calendar year these bulls have been sorted, processed, handled numerous times and strictly culled to remove any behavioural problems. Below is an index defining the different categories we have come up with. These are simply our ratings and cannot be compared to other breeders or numbering systems. Please inquire about any questions you may have.

1 = Pets – These cattle are exactly that; pets. They can be scratched in the pen and handled at all times.

2 = Calm – These cattle are very quiet, easy to handle when isolated, they do not frighten when you are working them but you cannot get up to them in the pen to scratch them.

3 = Average – These cattle are calm in the group, you can walk through them without disruption. When sorting these cattle, they are easy to stop and hold but can get uneasy and impatient when worked alone.

4 = Slightly Restless – these cattle are the ones at the back of the group in the pen; they do not disrupt the rest of the pen; they are manageable in a group but become agitated and nervous when isolated or worked alone.

5 = Nervous – these cattle are constantly moving away from you in the pen, can disrupt the group, needs to be managed with a buddy, these cattle are hard to stop when sorting and become easily agitated if alone.

6 = Heads Up – these cattle have a big flight zone, they will be the first to run away, should be handled with a buddy, cannot be stopped or isolated, when sorting in an alley these cattle will run past sideways or snort at you. These cattle can become aggressive when agitated.

7 = Hunters – these cattle cannot be trusted at all, even in a group they will become aggressive and cannot be handled. These animals are culled immediately.

**Jr. Incentive Program:** Offering 10% off to any Junior member on the purchase of any purebred female.

**EPD's** – EPD's are based solely on pedigree estimates therefore accuracy cannot be predicted or guaranteed. EPD's cannot be compared breed to breed as each breed has different baselines and calculations. The Black and Red Angus cannot be compared as Angus because their numbers stem from different bases as The American Angus Assoc. and The Red Angus of America view them as two different breeds. Below are the EPD averages for each breed.

Limousin EPD Avg 2018			
BW	WW	YW	Milk
2.9	65	90	26

Black Angus EPD Avg 2018			
BW	WW	YW	Milk
2.3	45	79	21

Red Angus EPD Avg 2018			
BW	WW	YW	Milk
-0.6	51	78	16



# *LIMOUSIN DIVISION*

*Offering Elite Limousin Genetics*



LIMOUSIN



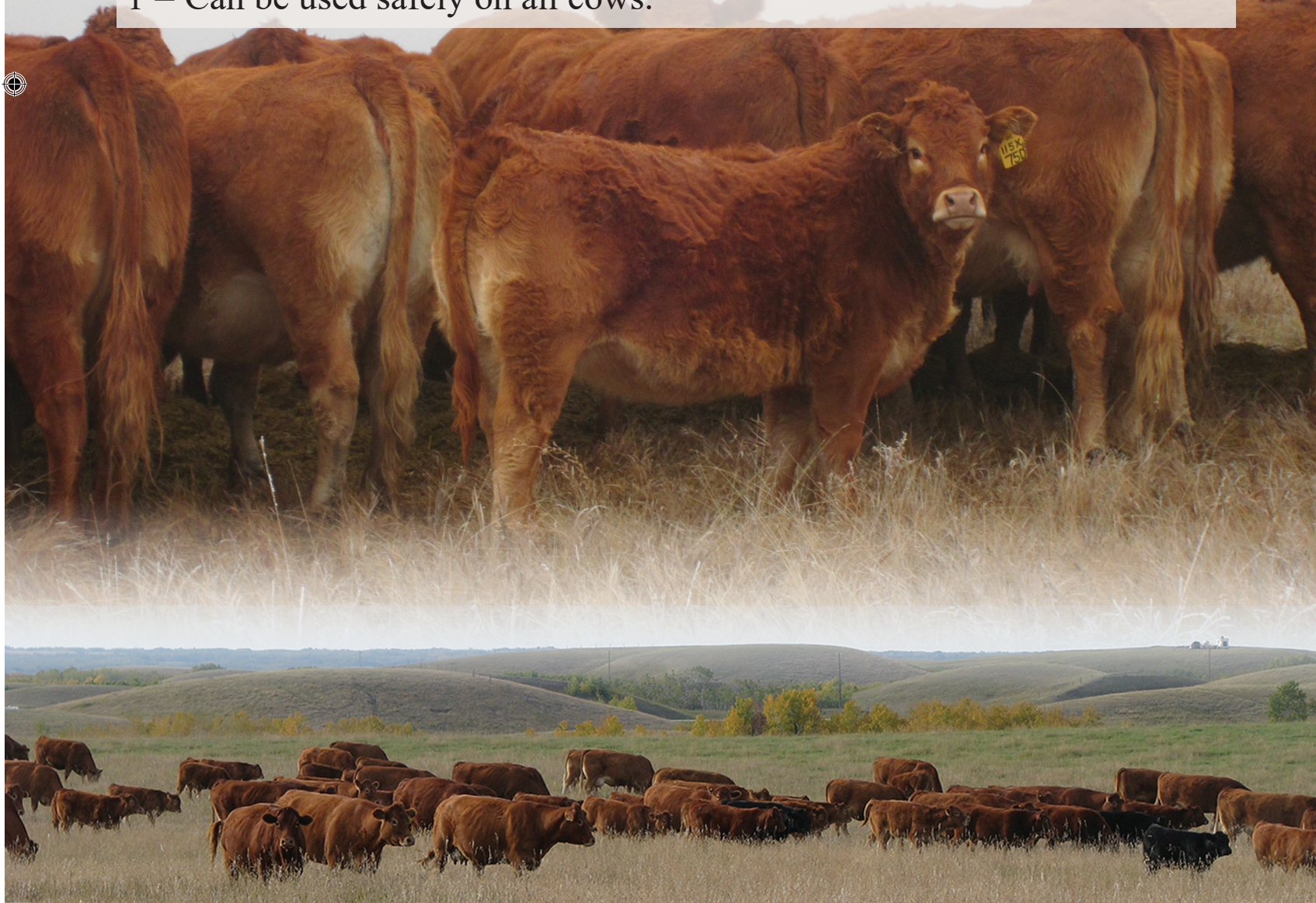
## Are you looking for calving ease? Check out our calving scores on each bull!

**Calving Rating or CR:** We have taken into consideration our knowledge on the cow families, calving histories, birth weight, and phenotypical shape as a baby calf to help you better select a herd bull based on your calving needs. These numbers are not calculated; they are an estimate based on how we ourselves would use the bull if we were breeding our own cows. \*All Bulls are guaranteed to calve easy on cows\*

3 = Could be safely used on heifers.

2 = May be used on heifers with a family history of calving ease. Could be used safely on all cows.

1 = Can be used safely on all cows.





# ***RICHMOND RAISED BULL POWER***





# Limousin Yearling Bulls



## RS Richmond Zodiac SRD 29Z

Homozygous Polled

94%

CPM0210496

Jan 30/12

Richmond Sir. J.R SRD 128S

RPY Paynes Marathon 47U

Richmond Wyatt SRD 48W

Richmond Xotic SRD 6X

Top Meadow 303N

RPY Perfect Storm 10R

BW	AWW 205 Day	TM	Mature Weight	EPD's			
				BW	WW	YW	Milk
75	715	40	2750	0.9	68	96	26



### Richmond SRD 21E

Jan 17/2017 96% CPM4090976

Richmond ACE TSR 39A

Richmond Wyatt SRD 48W

Richmond Zikita SRD 5Z

RPY Perfect Storm 10R



2

Homo  
Polled

BW 90

CR 2

DOC 2

AWW 205 Wt  
642

Feb 1 2018 Wt.  
1200

EPD's

BW 1.2

WW 61

YW 84

Milk 28



**1****Richmond Elvis SRD 58E**

95%

Jan 21/2017

CPM4090977



Homo Polled	
BW	90
CR	2
DOC	1
AWW 205 Wt	
751	
Feb 1 2018 Wt.	
1200	
EPD's	
BW	2.5
WW	74
YW	93
Milk	28

**Grand Dam**

Richmond Xceller SRD 137X  
**Sire: Richmond Zodiac SRD 29Z**   **Richmond Athena SRD 43A**  
 Richmond Twist SRD 22T

**3****Richmond Eros SRD 8E**

Jan 4/2017 93% CPM4090960

Homo Polled	
BW	75
CR	3
DOC	2
AWW 205 Wt	
678	
Feb 1 2018 Wt.	
1180	
EPD's	
BW	3.0
WW	71
YW	99
Milk	34

**Richmond Zodiac SRD 29Z**  
 CJSL Timetraveler 7051T  
**Pinnacle's A Big Kiss 10A**  
 Greenwood XOXO







## Richmond Easton SRD 54E

Jan 17/2017 96% CPM4090976

### Richmond Zodiac SRD 29Z

Richmond Sir. J.R SRD 128S

Richmond Xpected SRD 7X

Richmond Ultimatum SRD 50U



# 4

Flake Scur	
BW	90
CR	2
DOC	2
AWW 205 Wt	
642	
Feb 1 2018 Wt.	
1050	
EPD's	
BW	1.0
WW	55
YW	76
Milk	30



## Richmond Emperor SRD 22E

Jan 7/2017 94% CPM4090966

### Richmond Zodiac SRD 29Z

Paynes Marathon 47U

Richmond Yuki SRD 36Y

Richmond Tina SRD 93T



Elite Dam

# 5

Homo Polled	
BW	70
CR	3
DOC	1
AWW 205 Wt	
621	
Feb 1 2018 Wt.	
1000	
EPD's	
BW	-1.2
WW	58
YW	84
Milk	29



## Richmond Eddie SRD 61E

Jan 21/2017 93% CPM4090969

### Richmond Zodiac SRD 29Z

IVY's Marksman HTZ 10Z

Richmond Baccardi Girl SRD 45B

Richmond Tina SRD 93T



# 6

Flake Scur	
BW	105
CR	1
DOC	2
AWW 205 Wt	
687	
Feb 1 2018 Wt.	
1100	
EPD's	
BW	3.7
WW	64
YW	86
Milk	28



**7****Richmond Edwin SRD 35E**

Jan 10/2017 93% CPM4090963

Scurred	
BW	80
CR	3
DOC	3
AWW 205 Wt	
640	
Feb 1 2018 Wt.	
1100	
EPD's	
BW	-1.0
WW	54
YW	78
Milk	29

**Richmond Zodiac SRD 29Z**

WULFS Keystone 7522K

**Richmond Tulip SRD 2T**

Blueberry's Rosette

**8****Richmond Excalibur SRD 67E**

Jan 26/2017 95% CPM4090974

Homo Polled	
BW	88
CR	2
DOC	2
AWW 205 Wt	
694	
Feb 1 2018 Wt.	
1040	
EPD's	
BW	2.8
WW	72
YW	96
Milk	29

**Richmond Crusader SRD 53C**

RPY Paynes Derby

**Richmond Cocktail SRD 71C**

Richmond Unbelievable SRD 38U

**Grand Dam****9****Richmond Einstein SRD 59E**

Jan 21/2017 95% CPM4090968

Scurred	
BW	80
CR	3
DOC	2
AWW 205 Wt	
706	
Feb 1 2018 Wt.	
1050	
EPD's	
BW	0.7
WW	68
YW	92
Milk	29

**Richmond Zodiac SRD 29Z**

WULFS Yellow Jacket K687Y

**Richmond Ashlyn SRD 41A**

Lost Point Shamrock





May 20/2016  
96% CPM4085707

# Richmond Datsyuk SRD 257D

**10**



Homo Polled	
BW	95
CR	2
DOC	2
AWW 205 Wt	732
Feb 1 2018 Wt.	1700
EPD's	
BW	2.9
WW	64
YW	86
Milk	30

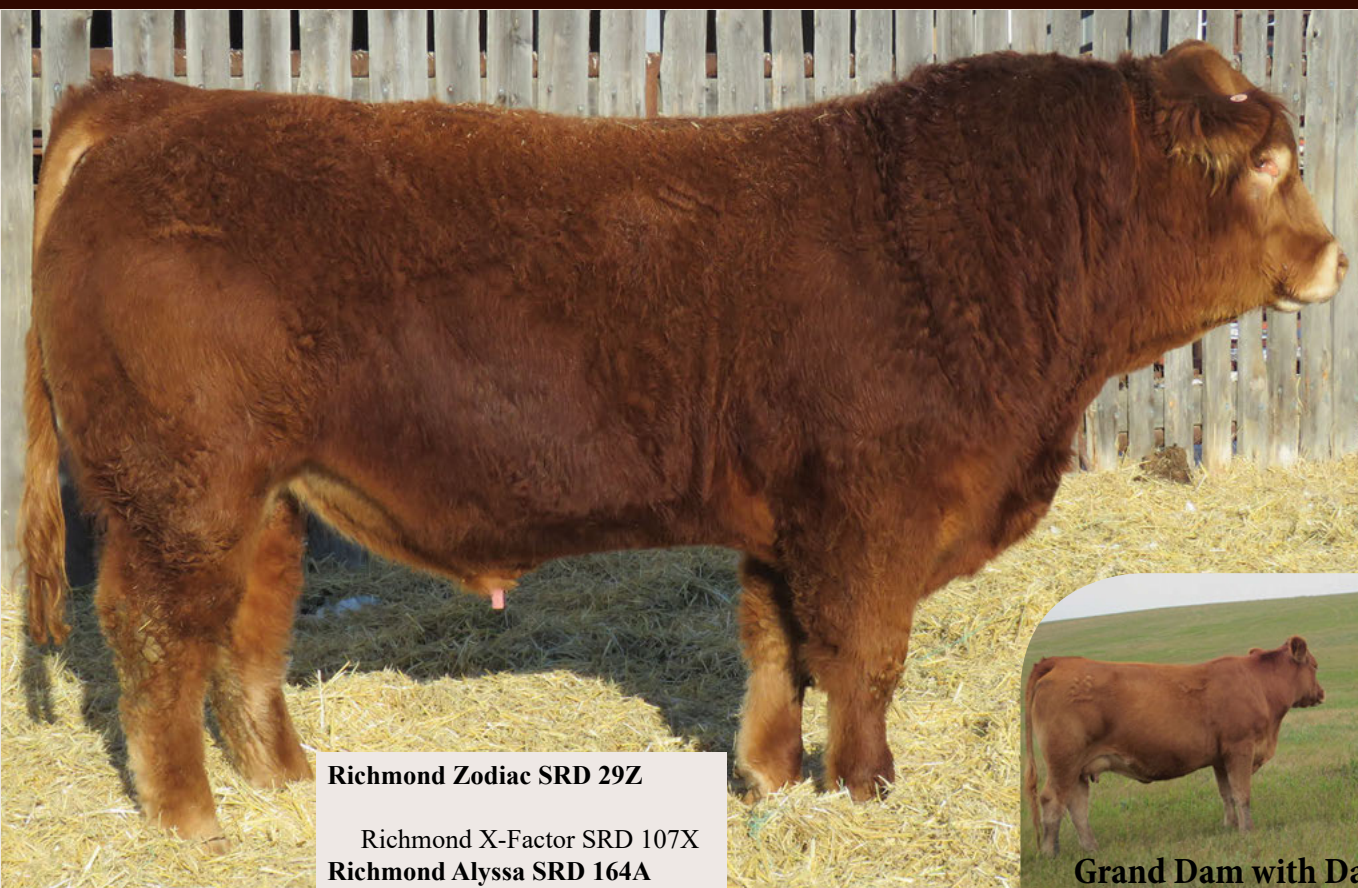
**Richmond Zodiac SRD 29Z**

Richmond Sir. J.R. SRD 128S  
**Richmond Wakki SRD 182W**  
Richmond Sometime SRD 190S

April 17/2016  
94% CPM4085677

# Richmond Zodiac SRD 121D

**11**



Homo Polled	
BW	77
CR	3
DOC	2
AWW 205 Wt	712
Feb 1 2018 Wt.	1675
EPD's	
BW	0.5
WW	69
YW	94
Milk	27

**Richmond Zodiac SRD 29Z**

Richmond X-Factor SRD 107X  
**Richmond Alyssa SRD 164A**  
Richmond Young Love SRD 80Y



**Grand Dam with Dam at foot**



**12****Richmond Double Time SRD 176D**

April 24/2016

94%

CPM4085694

Homo Polled	
BW	85
CR	2
DOC	3
AWW 205 Wt	
730	
Feb 1 2018 Wt.	
1800	
EPD's	
BW	1.9
WW	72
YW	104
Milk	27

**Richmond Zodiac SRD 29Z**

WULFS Waldo T928W

**Richmond Zippy SRD 128Z**

Richmond Miss SRD 192M

**13****Richmond Zodiac SRD 168D**

April 22/2016

95%

CPM4085692

Homo Polled	
BW	80
CR	2
DOC	2
AWW 205 Wt	
711	
Feb 1 2018 Wt.	
1750	
EPD's	
BW	1.4
WW	70
YW	97
Milk	23

**Richmond Zodiac SRD 29Z**

Diamond C You're Cool

**Richmond April SRD 80A**

Richmond SRD 206W

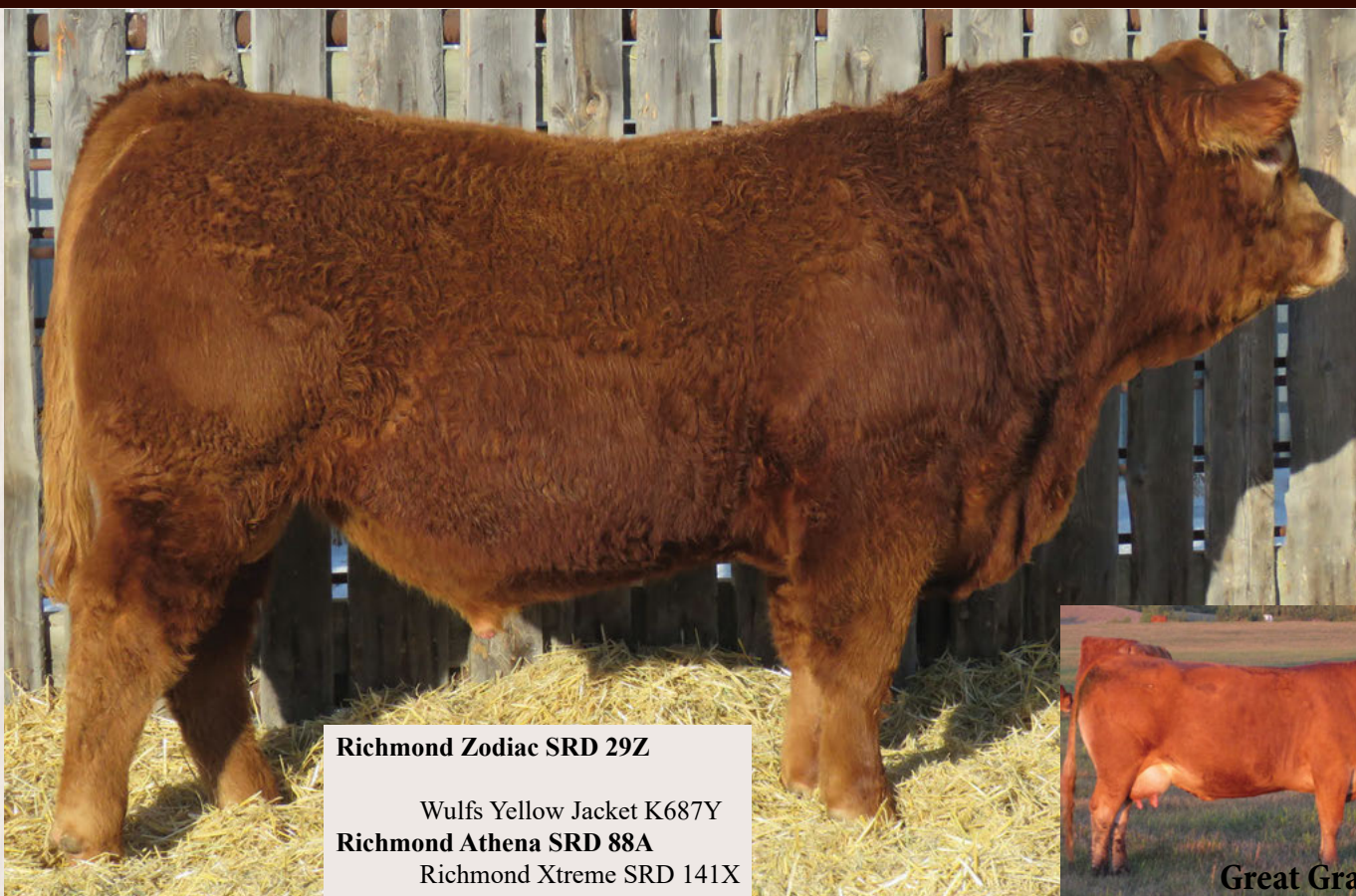
**Grand Dam**



June 02/2016  
94% CPM4085709

# Richmond Zodiac SRD 264D

**14**



**Richmond Zodiac SRD 29Z**  
Wulfs Yellow Jacket K687Y  
**Richmond Athena SRD 88A**  
Richmond Xtreme SRD 141X

April 16/2016  
94% CPM4085675

# Richmond Zodiac SRD 117D

**15**



**Richmond Zodiac SRD 29Z**  
Blueberry's Touchstone  
**Richmond Wisdom SRD 206W**  
Richmond SRD 86N

Scurred	
BW	90
CR	1
DOC	2
AWW 205 Wt	
754	
Feb 1 2018 Wt.	
1700	
EPD's	
BW	4.4
WW	79
YW	111
Milk	28



Great Grand Dam

Homo Polled	
BW	88
CR	2
DOC	2
AWW 205 Wt	
689	
Feb 1 2018 Wt.	
1830	
EPD's	
BW	2.4
WW	66
YW	90
Milk	24



# 16 Richmond Director SRD 185D

April 25/2016

95%

CPM4085697

Homo Polled	
BW	92
CR	1
DOC	3
AWW 205 Wt	711
Feb 1 2018 Wt.	1815
EPD's	
BW	4.1
WW	72
YW	98
Milk	23



**Richmond Zodiac SRD 29Z**

Nordal Trendsetter

**Richmond Xotic SRD 79X**

Richmond Precious SRD 40P



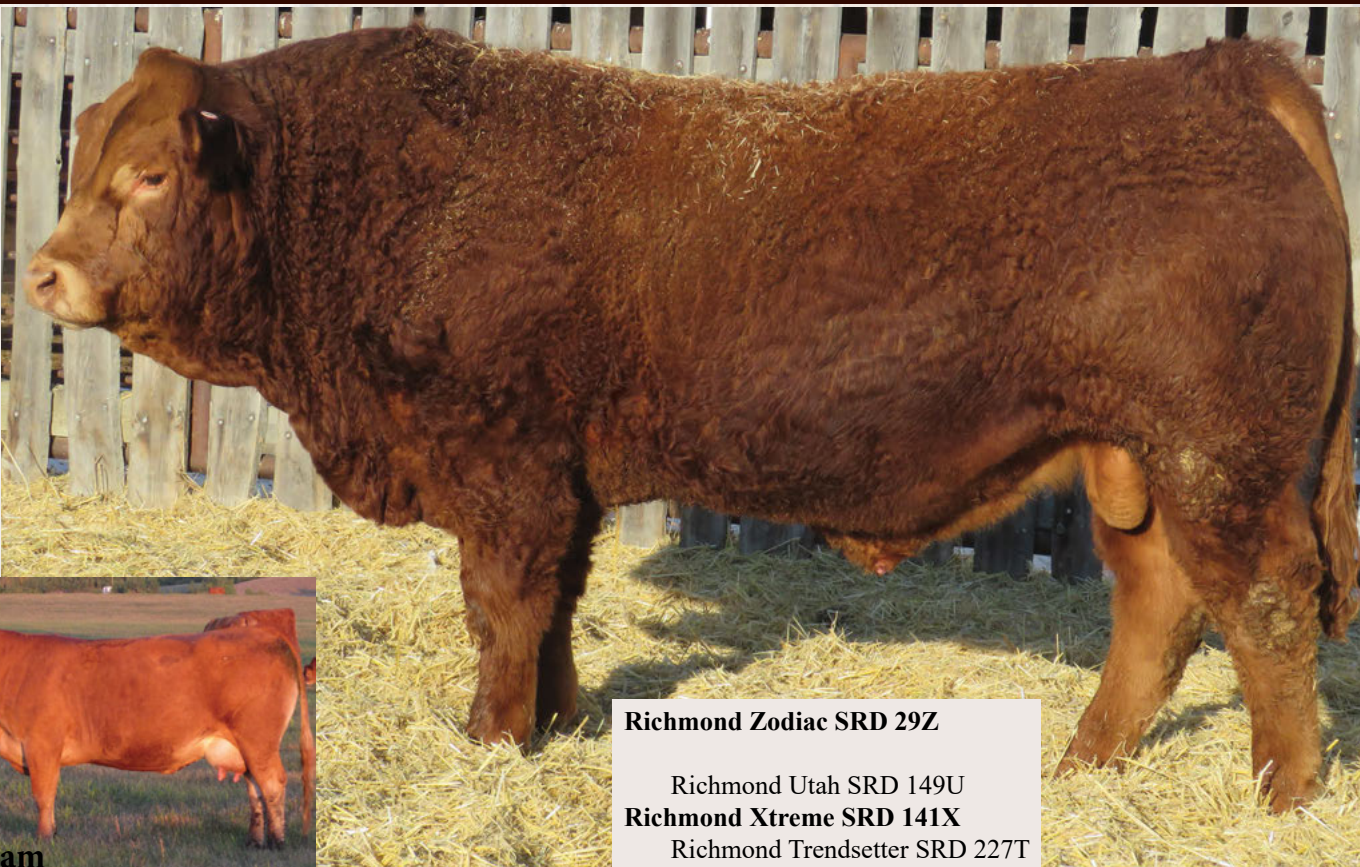
# 17 Richmond Zodiac SRD 84D

April 8/2016

96%

CPM4085662

Homo Polled	
BW	95
CR	1
DOC	2
AWW 205 Wt	706
Feb 1 2017 Wt.	1860
EPD's	
BW	4.3
WW	69
YW	93
Milk	28



**Richmond Zodiac SRD 29Z**

Richmond Utah SRD 149U

**Richmond Xtreme SRD 141X**

Richmond Trendsetter SRD 227T



**Grand Dam**



May 8/2016  
95% CPM4085704

# Richmond Zodiac SRD 238D

**18**



Flake Scur	
BW	90
CR	2
DOC	2
AWW 205 Wt	699
Feb 1 2018 Wt.	1640
EPD's	
BW	3.6
WW	68
YW	98
Milk	28

**Richmond Zodiac SRD 29Z**

Richmond Slugger SRD 42S  
**Richmond SRD 65U**  
Richmond Black SRD 13L



April 21/2016  
95% CPM4085689

# Richmond Zodiac SRD 163D

**19**



Double Polled	
BW	85
CR	2
DOC	3
AWW 205 Wt	665
Feb 1 2018 Wt.	1675
EPD's	
BW	2.2
WW	58
YW	83
Milk	28

**Richmond Zodiac SRD 29Z**

Anchor B Great West  
**Richmond SRD 50Y**  
Richmond SRD 38U

**Homo Polled Test Pending**



**Grand Dam**



**20****Richmond Zodiac SRD 102D****April 13/2016 93% CPM4085667**

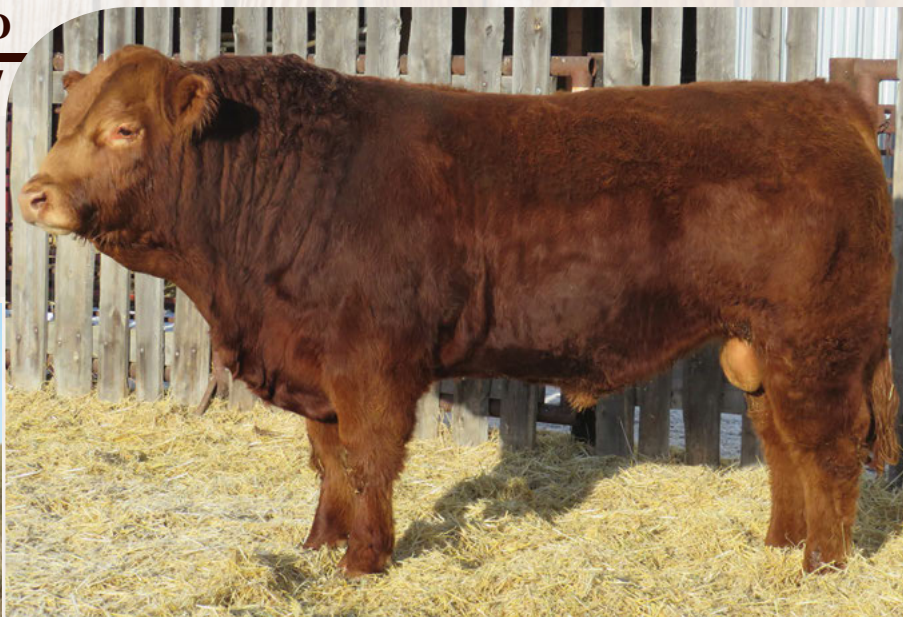
Double Polled	
BW	81
CR	2
DOC	2
AWW 205 Wt	
702	
Feb 1 2018 Wt.	
1630	
EPD's	
BW	2.3
WW	70
YW	97
Milk	27

**Richmond Zodiac SRD 29Z**

WULFS Yellow Jacket K687Y

**Richmond Amilia SRD 151A**

Richmond Xandi SRD 112X

**Grand Dam****21****Richmond Doyle SRD 161D****April 21/2016 95% CPM4085688**

Double Polled	
BW	95
CR	1
DOC	4
AWW 205 Wt	
679	
Feb 1 2018 Wt.	
1600	
EPD's	
BW	4.0
WW	68
YW	89
Milk	29

**Richmond Zodiac SRD 29Z**

Polled Prophet

**Richmond Twist SRD 22T**

Polled Guantlet

**22****Richmond Dempsey SRD 265D****June 17/2016 96% CPM4085708**

Scurred	
BW	90
CR	1
DOC	3
AWW 205 Wt	
671	
Feb 1 2018 Wt.	
1575	
EPD's	
BW	2.9
WW	60
YW	77
Milk	26

**Richmond Zodiac SRD 29Z**

Sirloin Landmark

**Richmond Too Good SRD 223T**

Richmond Moonbeam SRD 147M



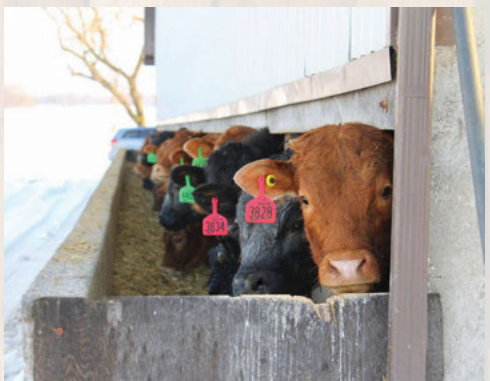
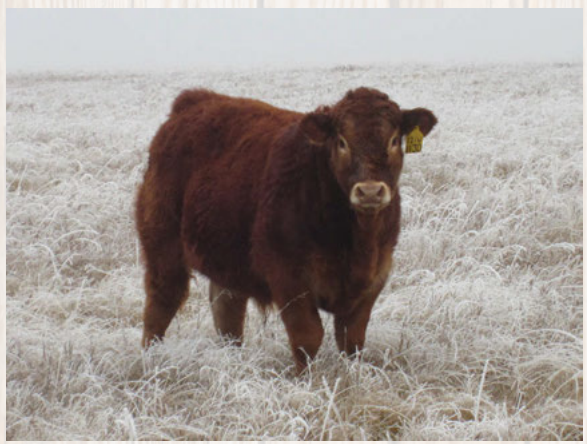




*We are continually looking to source well muscled and good tempered Limousin and Limousin-crossed calves. Their efficient gains and high yielding carcasses make them a definite asset in our feedlot. Limousin cattle fit in nicely in both the regular and high value specialty markets in Ontario. We are willing to pay top dollar for reputation calves that have not been implanted and have been double vaccinated to ensure they are able to make the trip to Ontario and go on to feed with minimum health problems when they arrive. In short, using a Limousin bull is a great way to add value to your calf crop.*



Scott and Murray Legge & Family  
Legge Beef Farms



Richmond Ranch would like to extend a big thank you to Legge Beef; for their continuous support of the limousin breed. Legge Beef is a family run operation in Chesley Ontario. Scott and his father Murray run a feedlot, where they put a heavy focus on high yielding cattle. For many years now, they have turned to Limousin genetics to achieve their carcass goals. The Legge Family strives for quality cattle and every fall seeks out top quality genetics across Canada.







**“The Limousin breed might just be the breed that has the most to gain from a breed specific sale that gathers large numbers to feature for the consumers.”**

Richmond Ranch would like to extend a thank you to the following auction marts who have hosted breed specialty sales promoting limousin influenced calves. Last fall it was great to see everyone’s efforts rewarded when a ten-cent premium was seen above market price on the Limousin calves that day. We look forward to working with them again this year to bring as much excitement as possible to our customer’s calves. If you have limousin genetics, we encourage you to consider what a great opportunity it is to showcase your calves where there is a strong offering to attract the premium buyers. If you have any questions on how this could help market your next calf crop, then give these very experienced and professional salesmen a call.



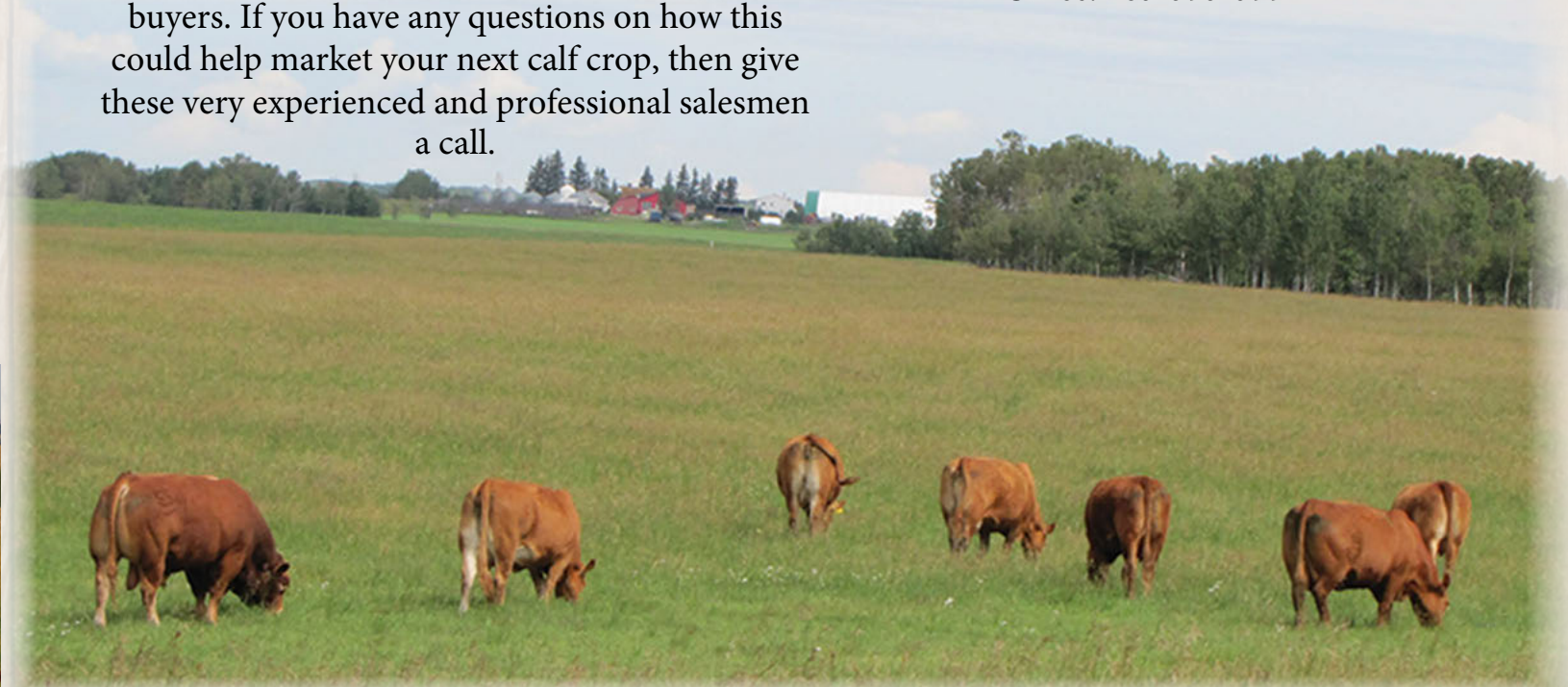
**VJV Ponoka Specialty Limousin Calf Sales**  
**March 14, 2018 & November 7, 2018**  
 Craig Jacklin 403-783-1453  
 Stan Skeels 403-704-0288



**Stettler Auction Mart Limousin Calf Sale**  
**November 2, 2018**  
 Gary Rairden 403-740-6823  
 Jim Abel 403-740-9609



**Dryland Cattle Trading Corp., Veteran**  
**November 8 & 15, 2018**  
 Curtis Perry 403-578-8062  
 Office: 403-575-3772







# RS Diamond C You're Cool NSC 3Y

WULFS Spaceship 3223S  
**Diamond C Way Cool NSC 7W**  
 Dimond C Showgirl NSC 1S

Dimond C Superman NSC 52S  
**Diamond C Wedding Crasher NCS 11W**  
 Dimond C Patricia NSC 3P

**Homozygous Polled**

**96%**

**CPM0208159**

**Jan 02/11**

BW	AWW 205 Day	TM	Mature Weight	Spring 2017 EPD's			
				BW	WW	YW	Milk
85	723	40	2450	-0.1	68	94	22



**Richmond Done Deal SRD 181D**

**April 25/2016 97% CPM4085695**

**Diamond C You're Cool**

Blueberry Ranch Hand  
**Richmond Tiffany SRD 107T**  
 Lazy S SSK 1R

**23**

Scurred	
BW	75
CR	3
DOC	3
AWW 205 Wt	
622	
Feb 1 2018 Wt.	
1685	
EPD's	
BW	0.1
WW	52
YW	70
Milk	22



# 24 Richmond Dodger SRD 113D

April 15/2016

96%

CPM4085672

Homo Polled	
BW	80
CR	3
DOC	2
AWW 205 Wt	
723	
Feb 1 2018 Wt.	
1740	
Spring 2018 EPD's	
BW	-0.2
WW	58
YW	74
Milk	28



**Diamond C You're Cool**

Richmond SIR J.R SRD 128S  
**Richmond Wisdom SRD 121W**  
 Richmond SRD 362J

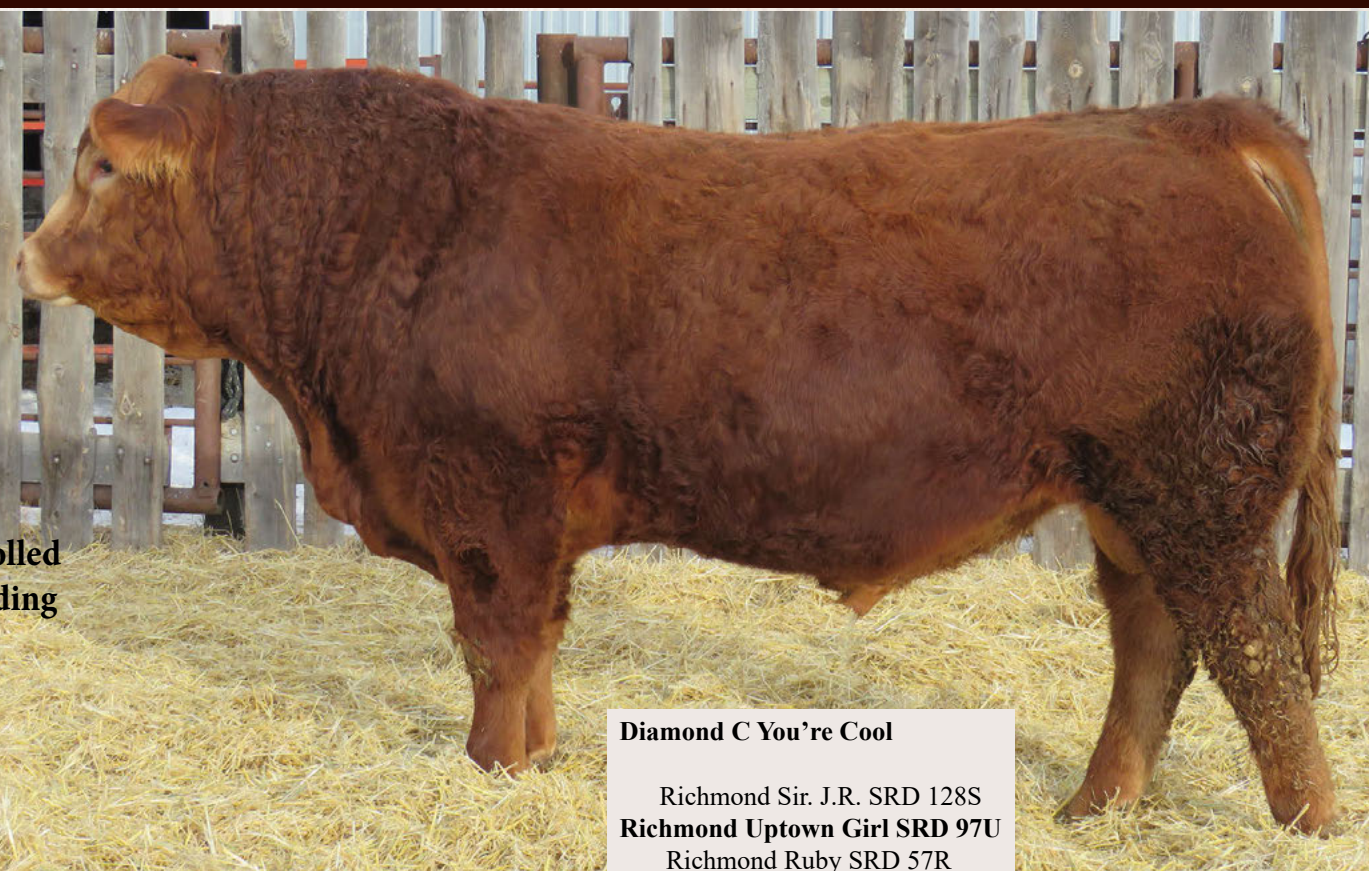
# 25 Richmond Devil's Pride SRD 99D

April 11/2016

95%

CPM4085665

Double Polled	
BW	70
CR	3
DOC	3
AWW 205 Wt	
651	
Feb 1 2018 Wt.	
1620	
EPD's	
BW	-1.8
WW	55
YW	68
Milk	25



**Diamond C You're Cool**

Richmond Sir. J.R. SRD 128S  
**Richmond Uptown Girl SRD 97U**  
 Richmond Ruby SRD 57R

**Homo Polled  
 Test Pending**





## Diamond C You're Cool

Richmond Sir. J.R. SRD 128S  
**Richmond Perfect Wish SRD 60W**  
RPY Paynes Perfect Storm

We used Lot 26 to breed virgin heifers in the breeding season  
June - August 2017. Service Sire to the bred heifers in the sale.

Homo Polled	B.W	CR	DOC	AWW 205 Wt	Feb 1 Wt.	EPD's			
						BW	WW	YW	Milk
	87	2	2	677	1740	1.0	64	88	27



## Richmond DangerZone SRD 166D

April 22/2016 97% CPM4085690

## Diamond C You're Cool

Richmond Pride SRD 201P  
**Richmond Undeniable SRD 108U**  
Richmond SRD 54M



Double Polled	
BW	95
CR	1
DOC	3
AWW 205 Wt 624	
Feb 1 2018 Wt. 1560	
EPD's	
BW	4.0
WW	57
YW	78
Milk	24



**28****Richmond Doc Holiday SRD 101D**

96%

April 12/2016

CPM4085666

Homo Polled	
BW	80
CR	2
DOC	2
AWW 205 Wt	
807	
Feb 1 2018 Wt.	
1810	
EPD's	
BW	0.5
WW	75
YW	106
Milk	22

**Diamond C You're Cool**

TMF West Wood 505W  
Excel **Yasabel 118Y**  
TJS Peek A Boo

We used Lot 28 to breed virgin heifers in the breeding season  
June - August 2017. Service Sire to the bred heifers in the sale.

**29****Richmond Double Decker SRD 83D**

94%

April 8/2016

CPM4085661

Homo Polled	
BW	60
CR	2
DOC	2
AWW 205 Wt	
672	
Feb 1 2018 Wt.	
1730	
EPD's	
BW	-1.8
WW	70
YW	103
Milk	26

**Diamond C You're Cool**

WULFS Waldo  
**Richmond SRD 63Y**  
RPY Perfect Storm 10R





**Homo Polled  
Test Pending**

## Richmond Digger SRD 111D

April 15/2016 91% CPM4085671

**Sire: Diamond C You're Cool**

Richmond Sir. J.R. SRD 128S

**Richmond SRD 94U**

Richmond SRD 91K



# 30

Double Polled	
BW	70
CR	3
DOC	3
AWW 205 Wt	
657	
Feb 1 2018 Wt.	
1570	
EPD's	
BW	-2.1
WW	52
YW	65
Milk	25



## Richmond Divito SRD 140D

April 19/2016 97% CPM4085681

**Sire: Diamond C You're Cool**

Richmond SIR J.R SRD 128S

**Richmond Wiggles SRD 3W**

Miss J&J Lucille



# 31

Double Polled	
BW	75
CR	3
DOC	3
AWW 205 Wt	
635	
Feb 1 2018 Wt.	
1625	
EPD's	
BW	-0.8
WW	53
YW	65
Milk	23



## Richmond Dandy SRD 186D

April 25/2016 91% CPM4085698

**Diamond C You're Cool**

Richmond Sir. J.R. SRD 128S

**Richmond Wyoh SRD 165W**

Richmond SRD 91K

# 32

Double Polled	
BW	74
CR	3
DOC	3
AWW 205 Wt	
641	
Feb 1 2018 Wt.	
1760	
EPD's	
BW	-1.4
WW	51
YW	64
Milk	25



# 33 Richmond Drifter SRD 132D

96%

April 18/2016

CPM4085680

Scurred	
BW	86
CR	2
DOC	3
AWW 205 Wt	
652	
Feb 1 2018 Wt.	
1710	
EPD's	
BW	2.2
WW	63
YW	84
Milk	22



**Diamond C You're Cool**

Richmond Ripper SRD 176R  
**LJM Unique 5U**  
LJM Rebecca 5R

# 34 Richmond Durango SRD 128D

96%

April 17/2016

CPM4085678

Homo Polled	
BW	70
CR	2
DOC	2
AWW 205 Wt	
674	
Feb 1 2018 Wt.	
1625	
EPD's	
BW	-0.3
WW	58
YW	78
Milk	26



**Diamond C You're Cool**

RPY Paynes Marathon 47U  
**Richmond Tulip SRD 91Y**  
Richmond Tiffany SRD 107T



April 16/2016  
96% CPM4085676

# Richmond Dr. Pepper SRD 119D

**35**



Homo Polled	
BW	70
CR	3
DOC	2
AWW 205 Wt	
702	
Feb 1 2018 Wt.	
1645	
EPD's	
BW	-1.8
WW	57
YW	72
Milk	24

**Diamond C You're Cool**

Richmond Sir. J.R. SRD 128S  
Richmond Whimsical SRD 204W  
CL Pennie

April 10/2016  
94% CPM4085663

# Richmond Devils Advocate SRD 94D

**36**



Scurred	
BW	78
CR	2
DOC	2
AWW 205 Wt	
662	
Feb 1 2017 Wt.	
1625	
EPD's	
BW	2.2
WW	68
YW	96
Milk	25

**Richmond Blackout SRD 10B**

Richmond Zodiac SRD 29Z  
Richmond Breath Taker SRD 179B  
Richmond SRD 109Y



**37****Richmond Deputy SRD 80D****April 7/2016 97% CPM4085660**

Homo Polled	
BW	88
CR	2
DOC	2
AWW 205 Wt	
679	
Feb 1 2018 Wt.	
1700	
EPD's	
BW	1.4
WW	56
YW	72
Milk	28

**Diamond C You're Cool**

Richmond Sir. J.R. SRD 128S  
**Richmond Winnie SRD 209W**  
 Richmond Mentor SRD 92M

**38****Richmond Drummer SRD 182D****April 25/2016 94% CPM4085696**

Double Polled	
BW	82
CR	3
DOC	2
AWW 205 Wt	
713	
Feb 1 2018 Wt.	
1500	
EPD's	
BW	2.9
WW	73
YW	97
Milk	30

**Richmond Blackout SRD 10B**

WULFS Yellow Jacket K687Y  
**Richmond Big Mischeif SRD 189B**  
 Richmond Xact SRD 40X

**39****Richmond Desert Storm SRD 106D****April 13/2015 94% CPM4085670**

Double Polled	
BW	73
CR	3
DOC	5
AWW 205 Wt	
663	
Feb 1 2018 Wt.	
1500	
EPD's	
BW	0.9
WW	61
YW	80
Milk	24

**Richmond Blackout SRD 10B**

Richmond Zodiac SRD 29Z  
**Richmond Be Used By U SRD 113B**  
 Richmond Useable SRD 113U

**Grand Dam**





Hetero Polled

WULFS Yellow Jacket K687Y

B.W	CR	DOC	AWW 205 Wt	Feb 1 Wt.	EPD's			
					BW	WW	YW	Milk
95	1	1	774	1735	4.5	76	109	34

Anchor B Great West  
Richmond Yancy SRD 37Y  
Miss J&J Polled Raven





**41****Richmond Double Down SRD 98D**

April 11/2016

94%

CPM4085664

Polled	
BW	97
CR	1
DOC	2
AWW 205 Wt	
751	
Feb 1 2018 Wt.	
1890	
EPD's	
BW	5.6
WW	81
YW	113
Milk	34

**WULFS Yellow Jacket K687Y**

Nordal Starbuck

**Miss J&J Pasha 7P**

Miss J&amp;J Hawaiian

**42****Richmond Drake SRD 211D**

April 29/2016

92%

CPM4085701

Double Polled	
BW	100
CR	1
DOC	3
AWW 205 Wt	
717	
Feb 1 2018 Wt.	
1700	
EPD's	
BW	6.0
WW	79
YW	114
Milk	29

**Homo Polled Test Pending****WULFS Yellow Jacket K687Y**

Anders Rawhide

**Y2K Urissa 895U**

EXE Summer







# RS Richmond X-Celler SRD 137X

Highland Landmine  
Nordal Trendstetter  
Nordal Rachel

**Homozygous Polled**

**95%**

**CPM0204501**

**May 02/10**

Richmond Pride SRD 201P  
**Richmond Tremendous SRD 181T**  
Richmond SRD 145N

BW	AWW 205 Day	TM	Mature Weight	EPD's			
				BW	WW	YW	Milk
75	696	47	2650	4.1	58	85	28



**Richmond X-Celler SRD 215D**

**April 30/2016 94% CPM4085702**

**43**

**Richmond Xceller SRD 137X**

ROMN Tow Truck 111T

**Richmond Xcell SRD 14X**

Excel Polled Ula

Double Polled	
BW	95
CR	1
DOC	3
AWW 205 Wt 665	
Feb 1 2018 Wt. 1500	
EPD's	
BW	3.9
WW	60
YW	89
Milk	25



# 44 Richmond X-Celler SRD 147D

April 20/2016

95%

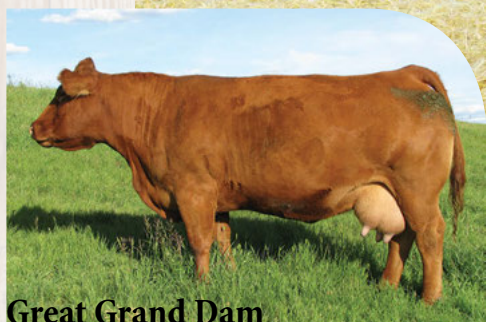
CPM4085684

Homo Polled	
BW	86
CR	1
DOC	2
AWW 205 Wt	
802	
Feb 1 2018 Wt.	
1780	
EPD's	
BW	1.7
WW	59
YW	84
Milk	32



**Richmond Xceller SRD 137X**

Anchor B Great West  
**Richmond Zeva TSR 54Z**  
 Richmond Xquisite TSR 21X



**Great Grand Dam**

# 45 Richmond X-Celler SRD 172D

April 23/2016

96%

CPM4085693

Homo Polled	
BW	85
CR	1
DOC	3
AWW 205 Wt	
658	
Feb 1 2018 Wt.	
1600	
EPD's	
BW	3.0
WW	55
YW	80
Milk	26



**Richmond Xceller SRD 137X**

Highland Kananaskis  
**LJM Rebecca 5R**  
 Bee-Jay Honeysuckle





## Richmond X-Celler SRD 159D

April 21/2015 95% CPM4085687

Richmond Xceller SRD 137X

WULFS Waldo T928W

Richmond Zealous SRD 59Z

Richmond SRD 38U



Grand Dam

# 46

Scurred	
BW	87
CR	1
DOC	3
AWW 205 Wt	
719	
Feb 1 2018 Wt.	
1735	
EPD's	
BW	4.3
WW	69
YW	102
Milk	27



## Richmond X-Celler SRD 105D

April 13/2016 95% CPM4085669

Richmond Xceller SRD 137X

Anchor B Trail Break

Richmond Xcelyn SRD 165X

Limolyn Red Top



# 47

Double Polled	
BW	95
CR	1
DOC	3
AWW 205 Wt	
659	
Feb 1 2018 Wt.	
1600	
EPD's	
BW	4.9
WW	59
YW	86
Milk	28



## Richmond X-Celler SRD 143D

April 19/2016 95% CPM4085682

Richmond Xceller SRD 137X

Anchor B Great West

Richmond Miss SRD 126Z

Richmond SRD 65U

# 48

Double Polled	
BW	93
CR	1
DOC	3
AWW 205 Wt	
668	
Feb 1 2018 Wt.	
1530	
EPD's	
BW	5.0
WW	59
YW	87
Milk	29



**49****Richmond X-Celler SRD 261D**

May 29/2016 73% CXM4085714

Double  
Polled

BW 85

CR 2

DOC 5

AWW 205 Wt  
749Feb 1 2018 Wt.  
1650

EPD's

BW 1.2

WW 60

YW 86

Milk 26

**Richmond Xceller SRD 137X**

SAV Final Answer 0035 (Angus)

**Richmond Wild Angel SRD 77W**

Richmond SRD 180N

**50****Richmond X-Celler SRD 116D**

72%

April 16/2016

CXM4085674

Double  
Polled

BW 98

CR 1

DOC 2

AWW 205 Wt  
727Feb 1 2018 Wt.  
1960

EPD's

BW 3.7

WW 67

YW 100

Milk 26

**Homo Polled  
Test Pending****Richmond Xceller SRD 137X**

SAV Final Answer 0035 (Angus)

**Richmond Wild Child SRD 126W**

Richmond SRD 124T



# What is Lim-Flex?

LIM-FLEX Stands for Limousin Efficiency Cross(X). Through the Canadian Limousin Association guidelines, the animal must have 37.5% to 75% registered Limousin Blood and 25% to 62.5% registered Angus Blood.



The main goal of this mating is to increase the hybrid vigour while maintaining calving ease and maternal traits. We feel these bulls are a great choice if you have a consistent type of cow herd.

## Why Lim-Flex?

Why are we interested in purchasing Lim Flex bulls?

*One of the main goals of our operation is to run a low maintenance cow herd. Starting at the beginning of April, we calve our moderate sized Red Angus based cows in a 1000-acre field several miles from home. The cattle graze stockpiled native forage and are checked a minimal amount. The maternal traits of the red angus breed are the cornerstone of our program but with the introduction of Lim-Flex bulls we have been able to capture some hybrid vigor in the offspring. We are aiming to produce a solid colored, heavier muscled crossbred calf at weaning; calves with the potential to increase rates of gain and the ability to both yield and grade well. We hope to have the benefits of the Limo bull while maintaining the best traits that a Red Angus cow offers as well. We have purchased 8 Lim-Flex bulls from the Richmond Family to date and are very impressed with the results so far. The 2017 weaning weights of our steers were up despite the fact we calved a week later, went through one on the hottest and driest years our area has experienced and dealt with two heavy duty blizzards in the fall. We are happy to say that we could definitely see a limo influence in many of our calves last year and that we will increase with the purchase of more Lim-Flex bulls in the future.*

Mitch, Rhonda, Cade and Abbey Treacy  
Indian Springs Land and Cattle  
Hussar Alberta





# 51 Richmond Alexander SRD 230D

72%

May 4/2016  
CXM4085609

Homo Polled	
BW	87
CR	1
DOC	2
AWW 205 Wt	
760	
Feb 1 2018 Wt.	
1830	
EPD's	
BW	4.2
WW	77
YW	112
Milk	24



Richmond Xceller SRD 137X

Riverside Network (Angus)

Richmond Amanda SRD 173A

Richmond SRD 133U

# 52 Richmond X-Celler SRD 196D

72%

April 26/2016  
CXM4085649

Homo Polled	
BW	80
CR	1
DOC	3
AWW 205 Wt	
757	
Feb 1 2018 Wt.	
1820	
EPD's	
BW	1.5
WW	0
YW	86
Milk	32



Richmond Xceller SRD 137X

Paynes Marathon 47U

Richmond Zowie SRD 46Z

SRD 705X (Angus)



Grand Dam



April 7/2016

48% CXM4085644

## Richmond Anthem SRD 79D

# 53



B.W	CR	DOC	AWW 205 Wt	Feb 1 Wt.	EPD's			
					BW	WW	YW	Milk
80	1	2	656	1870	0.8	51	68	20

**Red Bar-E-L Anthem 46A**

RPY Paynes Marathon 47U

**Richmond Xceptional SRD 42X**

Richmond Neat-O SRD 5N





# 54 Richmond Anthem SRD 222D

May 2/2016

48%

CXM4085653

Double Polled	
BW	94
CR	1
DOC	4
AWW 205 Wt	
738	
Feb 1 2018 Wt.	
1930	
EPD's	
BW	3.6
WW	59
YW	81
Milk	20



**Red Bar-E-L Anthem 46A**

Nordal Trendsetter

**Richmond Yvette SRD 66Y**

Richmond New Life SRD 34N

# 55 Richmond Anthem SRD 112D

April 15/2016

48%

CXM4085711

Scurred	
BW	85
CR	1
DOC	2
AWW 205 Wt	
739	
Feb 1 2018 Wt.	
1850	
EPD's	
BW	1.0
WW	50
YW	68
Milk	26



**Red Bar-E-L Anthem 46A**

Anchor B Great West

**Richmond Zada SRD 43Z**

Richmond Xpected SRD 7X



**Grand Dam**



April 8/2016  
72% CXM4085646

## Richmond Zeus SRD 82D

**56**



Scurred	
BW	65
CR	2
DOC	2
AWW 205 Wt	
719	
Feb 1 2018 Wt.	
1820	
EPD's	
BW	-0.5
WW	60
YW	81
Milk	24

**Richmond Zeus SRD 132Z**

Diamond C You're Cool  
Richmond Born 2 Run SRD 165B  
LJM 5U

April 16/2016  
73% CXM4085674

## Richmond Zeus SRD 115D

**57**



Scurred	
BW	70
CR	2
DOC	2
AWW 205 Wt	
712	
Feb 1 2018 Wt.	
1800	
EPD's	
BW	0.0
WW	61
YW	83
Milk	23

**Richmond Zeus SRD 132Z**

Diamond C You're Cool  
Richmond Bright Star SRD 125B  
Richmond Tiffany SRD 107T



**RS****Richmond Zeus SRD 132Z**

48% CXM4074166 Apr 26/2012

Angus

**Richmond Xtrigger SRD 192X**

Angus

HSF St. Anger

**Richmond Xplicit SRD 92X**

Richmond Miss JR. SRD 135M

BW	AWW 205 Day	TM	Mature Weight	EPD's			
				BW	WW	YW	Milk
70	741	44	2450	0.3	57	78	24

**Homozygous Polled****58****Richmond Zeus SRD 76D**

April 6/2016 72% CXM4085643

**Richmond Zeus SRD 132Z**

Richmond Zodiac SRD 29Z

**Richmond Becky SRD 132B**

Richmond Yetta SRD 64Y

Double Polled	
BW	75
CR	2
DOC	3
AWW 205 Wt	
719	
Feb 1 2018 Wt.	
1920	
EPD's	
BW	0.5
WW	59
YW	82
Milk	26

**59****Richmond Zeus SRD 205D**

April 28/2016 71% CXM4085651

**Richmond Zeus SRD 132Z**

Richmond X-Factor SRD 107X

**Richmond Betty Boop SRD 145B**

Richmond Zulu SRD 187Z

Double Polled	
BW	78
CR	3
DOC	3
AWW 205 Wt	
632	
Feb 1 2018 Wt.	
1540	
EPD's	
BW	1.0
WW	53
YW	68
Milk	24







## Richmond Decisive SRD 157D

April 21/2016 50% CXM4086219

HF Decisive 56Z (Angus)

Mash Accolade

Richmond SRD 150N

Richmond Credit SRD 27C



# 60

Polled	
BW	87
CR	2
DOC	4
AWW 205 Wt	
745	
Feb 1 2018 Wt.	
1680	
EPD's	
BW	1.6
WW	59
YW	85
Milk	29



## Richmond Decisive SRD 169D

April 22/2016 49% CXM4086220

HF Decisive 56Z (Angus)

J&J Polled Kazan

Richmond Rosy SRD 139R

Richmond Majestic SRD 166M

# 61

Double Polled	
BW	80
CR	1
DOC	3
AWW 205 Wt	
683	
Feb 1 2018 Wt.	
1775	
EPD's	
BW	0.9
WW	62
YW	88
Milk	19



## Richmond Decisive SRD 135D

April 19/2016 49% CXM4086218

HF Decisive 56Z (Angus)

Sirloin Landmark

Richmond Resolution SRD 184R

SRD Leisure

# 62

Double Polled	
BW	90
CR	1
DOC	3
AWW 205 Wt	
713	
Feb 1 2018 Wt.	
1900	
EPD's	
BW	2.3
WW	60
YW	86
Milk	22



# 63 Richmond Detective SRD 151D

April 20/2016

72%

CXM4086633

Double Polled	
BW	85
CR	1
DOC	2
AWW 205 Wt	
701	
Feb 1 2018 Wt.	
1790	
EPD's	
BW	2.0
WW	67
YW	93
Milk	24



**Richmond Alvin SRD 150A**

Diamond C You're Cool  
**Richmond SRD 119A**  
Richmond SRD 121W



**Grand Dam**

# 64 Richmond Darren SRD 254D

May 16/2016

72%

CXM4086640

Scurred	
BW	95
CR	1
DOC	3
AWW 205 Wt	
764	
Feb 1 2018 Wt.	
1840	
EPD's	
BW	6.5
WW	81
YW	120
Milk	19



**Richmond Alvin SRD 150A**

Wulfs Waldo T928W  
**Richmond Anita SRD 33A**  
Richmond SRD 104L



**Grand Dam**



# Limousin Open Heifers

Jan 9/2017

93%

CPF4090962

## Richmond Echo SRD 29E

**65**



Double Polled	
BW	70
DOC	2
AWW 205 Wt	
625	
EPD's	
BW	1.6
WW	70
YW	101
Milk	31

**Grand Dam to Crusader**



CJSL Timetraveler  
Richmond Zodiac SRD 29Z Xpect Perfection 22X  
EXLR 781K

Jan 7/2017

93%

CPF4090975

## Richmond Enchanted SRD 25E

**66**



Double Polled	
BW	60
DOC	2
AWW 205 Wt	
599	
EPD's	
BW	-0.5
WW	61
YW	86
Milk	30

**Richmond Baptist SRD 176B**

Richmond Zodiac SRD 29Z  
Richmond Camera Shy SRD 7C  
Richmond Tulip SRD 2T



**Grand Dam**



**67****Richmond Elite SRD 16E**

Jan 6/2017 95% CPF4090967

**Richmond Zodiac SRD 29Z**

Richmond Slugger SRD 42S

**Richmond SRD 38U**

SRD Luxurious

Double Polled	
BW	75
DOC	1
AWW 205 Wt	
590	
EPD's	
BW	2.6
WW	60
YW	87
Milk	25



SRD 38U has been a very influential female in the Richmond program. As you look through the catalogue you will see her influence in over 5 head. Richmond Elite will follow in her mother's foot steps to be what we feel is the ultimate type in the cow business. The Producer!

**68****Richmond EveningSky SRD 46E**

Jan 14/2017 94% CPF4090978

**Richmond Crusader SRD 53C**

RPY Paynes Derby 46Z

**Richmond Calendar Girl SRD 43C**

Richmond Yuki SRD 36Y

Double Polled	
BW	55
DOC	2
AWW 205 Wt	
577	
EPD's	
BW	-0.1
WW	66
YW	95
Milk	31

**Grand Dam****69****Richmond Erica SRD 30E**

Jan 9/2017 94% CPF4090970

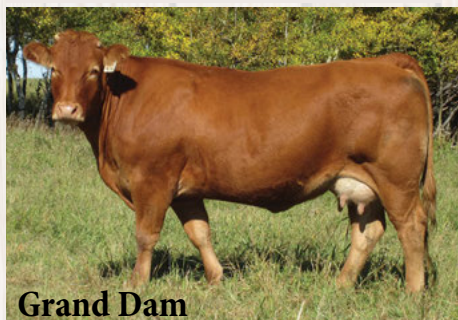
**Richmond Baptist SRD 176B**

Richmond Zodiac SRD 29Z

**Richmond Cleopatra SRD 55C**

Richmond Ashlyn SRD 41A

Double Polled	
BW	60
DOC	2
AWW 205 Wt	
614	
EPD's	
BW	0.4
WW	66
YW	92
Milk	30

**Grand Dam**



# Limousin Bred Females

**SS**

**Richmond Doc Holiday SRD 101D**

April 12/2016 96% CPM4085666

**Homozygous Polled**

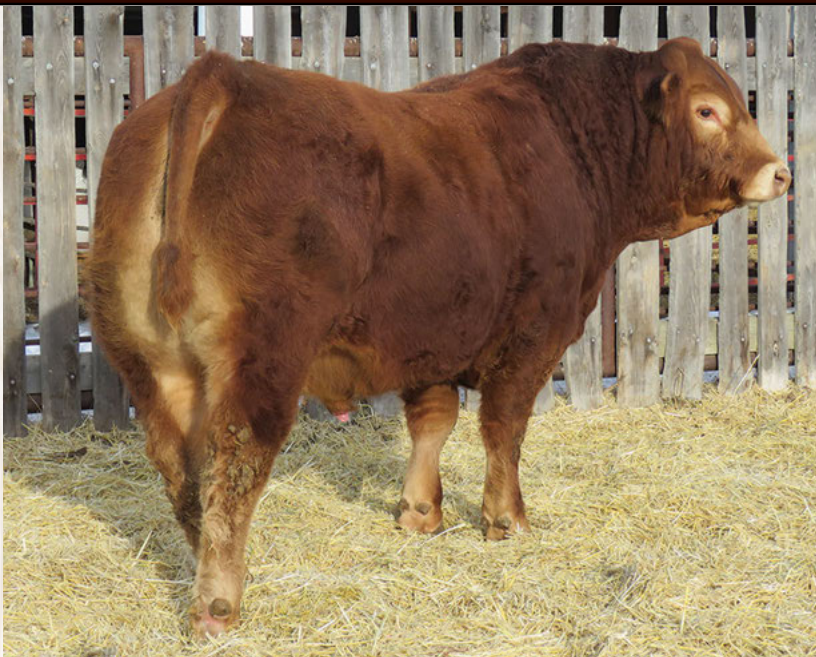
**Diamond C You're Cool**

TMF West Wood 505W

Excel Yasabel 118Y

TJS Peek A Boo

The following six heifers were pasture exposed June 30 - Aug 13 to Richmond Doc Holiday SRD 101D who sells as Lot 28. Due to start calving April 4, 2018. These heifers were preg checked Feb 1/18 by certified veterinarian Dr. Jackie Dobinson.



**70**

Preg checked safe to calve late April

**Richmond Denile SRD 224D**

May 2/2016 96% CPF4085605

**Richmond X-Celler SRD 137X**

RPY Paynes Marathon 47U

**Richmond Yo Yo SRD 46Y**

Stonyview Update

BW	DOC	AWW 205	EPD's			
			BW	WW	YW	Milk
74	2	670	2.9	62	88	36

**71**

Preg checked safe to calve early April

**Richmond Angus Girl SRD 126D**

April 17/2016 71% CXF4085582

**Richmond Zodiac SRD 29Z**

Nordal Trendsetter

**Richmond Angus Girl SRD 214A**

LLB Blue Lass 192U

BW	DOC	AWW 205	EPD's			
			BW	WW	YW	Milk
70	2	634	0.7	66	94	26



**Grand Dam**



**72**Preg checked safe to  
calve mid April**Richmond Disney SRD 152D**

April 20/2016 95% CPF4085588

Richmond Zodiac SRD 29Z

Blueberry's Ranch Hand

Richmond Useable SRD 113U

Richmond SRD 160L

BW	DOC	AWW 205	EPD's			
			BW	WW	YW	Milk
87	2	619	3.2	60	83	21

**73**Preg checked safe to  
calve early April**Richmond Darkness SRD 256D**

May 17/2016 95% CPF4085614

Richmond Zodiac SRD 29Z

Highland Pavorti

Richmond Truffles SRD 124T

Limolyn Red Top

BW	DOC	AWW 205	EPD's			
			BW	WW	YW	Milk
75	3	626	2.0	65	90	26



Sister

**74**Preg checked safe to  
calve mid April**Richmond Dixie Chick SRD 164D**

April 22/2016 95% CPF4085589

Richmond Zodiac SRD 29Z

DC Shock N Y'all

Richmond Unmatched SRD 133U

Richmond SRD 75N

BW	DOC	AWW 205 Day	EPD's			
			BW	WW	YW	Milk
92	3	643	3.7	69	92	28



Grand Dam

**75**Preg checked safe to  
calve mid April**Richmond Desire SRD 149D**

April 20/2016 71% CXF4085587

Richmond Zodiac SRD 29Z

Diamond C You're Cool

Richmond Anjie SRD 83A

Red LLB Miss 36W

BW	DOC	AWW 205	EPD's			
			BW	WW	YW	Milk
70	2	607	0.5	63	87	20



This April/May calving herd is made up of true do-it-themselves Ranch Cows that calve on grass; calving ease and mothering ability are essential. With strict attention to consistency, fertility, longevity, calving ease, udders, feet and legs, we have reached a point where the herd quality has come together on all ends. We have developed a fabulous set of working ranch cows; these bred heifers were chosen out of our replacement pen and we feel they are just that! These heifers have been exposed to the same bulls that we used on our heifers. Due to calve this spring, we are very confident in the calving ease of our bulls and have high hopes for these females.



The following heifers were pasture exposed June 30-Aug 13 to Richmond Crusader SRD 53C. Due to start calving April 4, 2018. These heifers were preg checked Feb 1/18 by certified veterinarian Dr. Jackie Dobinson

# SS Richmond Crusader SRD 53C

**Homozygous Polled**

**94% CPM4076214 Jan 26/2015**

**Sire: Richmond Zodiac SRD 29Z**

**Richmond Zandy SRD 49Z**

**Pinnalce's Xpect Perfection 22X**

BW	AWW 205 Day	TM	Oct Weight	EPD's			
				BW	WW	YW	Milk
87	832	40	2200	1.4	72	92	33

**76**

**Richmond Day Break 95D**

**April 11/2016 95% CPF4085578**

BW	85
DOC	4
AWW 205 Wt	570
EPD's	
BW	2.8
WW	64
YW	91
Milk	21

**Diamond C You're Cool** ROMN Justice  
**Eliau Polled 254U**  
Eliau Dancer



**Preg checked safe to calve early April**

**77**

**Richmond Rosy SRD 72D**

**April 4/2016 96% CPF4085569**

BW	80
DOC	2
AWW 205 Wt	591
EPD's	
BW	1.3
WW	64
YW	85
Milk	20

**Diamond C You're Cool** Nordal Trendsetter  
**Richmond Xotic SRD 72X**  
Richmond SRD 139R



**Preg checked safe to calve early April**



**78**Preg checked safe to  
calve mid April**Richmond Whirlwind SRD 253D**

May 16/2016 95% CPF4085613

Richmond X-Celler SRD 137X

Richmond Ripper SRD 176R

Richmond Whirlwind SRD 73W

LJM Rebecca 5R

BW	DOC	AWW 205	EPD's			
			BW	WW	YW	Milk
80	2	601	3.4	55	76	26

**79**Preg checked safe to  
calve early April**Richmond Betty Boop SRD 120D**

April 16/2016 93% CPF4085581

Richmond Blackout SRD 10B

WULFS Yellow Jacket K687Y

Richmond Betty Boop SRD 196B

Richmond Trooper SRD 159T

BW	DOC	AWW 205	EPD's			
			BW	WW	YW	Milk
72	2	622	1.9	69	91	26

**80**Preg checked safe to  
calve early May**Richmond Zena SRD 103D**

April 13/2016 95% CPF4085580

Diamond C You're Cool

Richmond Wyatt SRD 48W

Richmond Zena SRD 3Z

RPY Perfect Storm 10R

BW	DOC	AWW 205 Day	EPD's			
			BW	WW	YW	Milk
77	3	581	1.1	67	95	20





**81****Richmond Duty SRD 223D**

May 2/2016 71% CXF4086647

Richmond Alvin SRD 150A

Richmond Ripper SRD 176R

Polled Umbrella SEH 17U

SEH Polled Rainbow

BW	DOC	AWW 205	EPD's			
			BW	WW	YW	Milk
80	3	605	3.1	65	90	21

Preg checked safe to calve mid April

**82****Richmond Dazzled SRD 165D**

April 22/2016 73% CXF4086642

Richmond Alvin SRD 150A

Nordal Starbuck

Miss J&amp;J Polled Regal 41R

Miss J&amp;J Kool Aid

BW	DOC	AWW 205	EPD's			
			BW	WW	YW	Milk
80	3	664	2.5	66	92	27

Preg checked safe to calve mid April

**83****Richmond Dreamer SRD 184D**

April 25/2016 72% CXF4086643

Richmond Alvin SRD 150A

Anchor B Great West

Richmond Yahoo SRD 28Y

Richmond SRD 5U

BW	DOC	AWW 205 Day	EPD's			
			BW	WW	YW	Milk
85	3	718	3.3	69	99	27

Preg checked safe to calve early April

**84****Richmond Dorry SRD 239D**

May 9/2016 72% CXF4086649

Richmond Alvin SRD 150A

Nordal Trandsetter

Richmond XJAM SRD 89X

Richmond Newjan SRD 83N

BW	DOC	AWW 205	EPD's			
			BW	WW	YW	Milk
85	4	572	4.5	69	99	22

Preg checked safe to calve late April







## 86 Richmond Darling SRD 125D

April 17/2016 72% CXF4085559

Richmond X-Celler SRD 137X

Paynes Marathon 47U

Richmond Zodiac SRD 30Z

SAV Final Answer 0535

BW	DOC	AWW 205	EPD's			
			BW	WW	YW	Milk
85	2	680	4.4	68	98	30

Preg checked safe to calve mid April



## 88 Richmond Labryinth SRD 221D

May 2/2016 71% CXF4085565

Richmond Zeus SRD 132Z

Diamond C You're Cool

Richmond Born To Fly SRD 185B

Miss J&J Labyrinth

BW	DOC	AWW 205	EPD's			
			BW	WW	YW	Milk
75	2	600	1.6	62	85	28

Preg checked safe to calve mid April

## 85 Richmond Xpresso SRD 187D

April 25/2016 72% CXF4086644

Richmond Alvin SRD 150A

Richmond SIR J.R. SRD 128S

Richmond Xpresso SRD 11X

Miss J&J Kool Aid

BW	DOC	AWW 205	EPD's			
			BW	WW	YW	Milk
83	3	676	2.5	62	84	27

Preg checked safe to calve late April



## 87 Richmond Beyonce SRD 214D

April 30/2016 70% CXF4085564

Richmond Zeus SRD 132Z

WULFS Yellow Jacket K687Y

Richmond Beyonce SRD 159B

Richmond SRD 115X

BW	DOC	AWW 205	EPD's			
			BW	WW	YW	Milk
67	2	605	0.7	62	87	28

Preg checked safe to calve early May





**89****Richmond Dancer SRD 100D**

April 12/2016 45% CXF4085558

WULFS Yellow Jacket K687Y

Richmond 705X (Angus)

BW	DOC	AWW 205	EPD's			
			BW	WW	YW	Milk
83	3	650	3.1	75	108	25

**Preg checked safe to calve early April****91****Richmond Avril SRD 226D**

May 3/2016 71% CXF4085607

Richmond X-Celler SRD 137X

HF U-Connect 138Y

Richmond Avril SRD 78A

Richmond SRD 108Y

BW	DOC	AWW 205 Day	EPD's			
			BW	WW	YW	Milk
74	2	685	2.9	60	90	29

**Preg checked safe to calve early April****Preg checked safe to calve early April****90****Richmond Tenderness SRD 73D**

April 5/2016 48% CXF4086222

HF Decisive 56Z

EXLR Limited Edition 622L

BLCC Tenderness 104T

Richmond Love SRD 162L

BW	DOC	AWW 205	EPD's			
			BW	WW	YW	Milk
82	3	637	1.8	59	88	24

**Preg checked safe to calve mid April****92****Richmond Black Pearl SRD 206D**

April 28/2016 48% CXF4085616

BW	DOC	AWW 205	EPD's			
			BW	WW	YW	Milk
75	3	585	1.0	48	72	24

**Red Richmond Bando SRD 63B (Angus)**

Richmond Yogi Bear SRD 1Y

**Richmond Black Pearl SRD 109B**

Limolyn Red Top

**Pasture exposed June 30-Aug 13 to****Richmond Davidson SRD 210D****Selling as Lot 26.****Lot 26**



## 93 5 Commercial Bred Heifers Angus x Limousin

- a** 4D - Safe to Lot 26 (Limousin) due late April
- b** 8D - Safe to Red Cockburn Cowboy Kind 635D (Angus) due mid April
- c** 14D - Safe to Lot 28 (Limousin) due late April
- d** 7D - Safe to Richmond Crusader SRD 53C (Limousin) due early May
- e** 20D - Safe to Richmond Crusader SRD 53C (Limousin) due mid May

The following heifers were pasture exposed June 13 - August 13. Due to start calving April 4, 2018. These heifers were preg checked Feb 1/18 by certified veterinarian Dr. Jackie Dobinson



## 94 5 Black Open Commercial Heifers Angus x Limousin

### OPPORTUNITY!

There are financing options available through both of the Big Valley Feeders Association and the Clearview Cow Calf Co-op. These programs provide farmers with a competitive method of acquiring livestock. Members may also access one of the Livestock Indemnity Trust plans that reduce the extreme financial hardship that might result from animal death loss.

Financing for heifer calves is available through Big Valley Feeders Association.

Financing for bred heifer/ cows or cow/calf pairs is available through Clearview Cow Calf Co-op.

Please contact Andrea Webster prior to sale day at 403-876-2064 or email [bvfall1@telus.net](mailto:bvfall1@telus.net) or [clearviewcowcalf@gmail.com](mailto:clearviewcowcalf@gmail.com) for more information about either program or to apply.



# *Bull Turn Out @*

## *Indian Springs Land & Cattle*



These bulls are the sires  
of the Lot 95 Commercial  
Heifers

12 Richmond Bulls Turned  
out with 300 cows!





# Indian Springs Land & Cattle



The Treacy Family  
Mitch, Rhonda, Cade, & Abbey Treacy

Home - 403-787-2382  
Mitch Cell - 403-934-7418  
Rhonda Cell - 403-934-7412

We encourage you to call and visit about the heifers. We would be happy to answer any questions you may have.

When you talk about the ultimate industry type of cow you look for maternal traits, udders, rib shape and depth of body, good feet, and easy-doing, efficient females; the cow herd at Indian Springs is exactly that! The wintering hills of Hussar are filled with top end females that have been stringently culled down to an elite commercial producing cowherd by the Treacy Family. This family has an eye for quality cattle and has demanded that during their herd bull selections. We have had the privilege of getting to know the Treacy family over the past few years as they have purchased thirteen bulls from our operation, each one from the top. Every year that we have delivered the bulls we have been more and more impressed by the calf crop. We are thrilled to have The Treacy Family involved in our sale this year with this impressive offering of commercial open heifers. These heifers are selected straight from the top of over 140 head to choose from. Do not miss out on the opportunity to add these replacement females into your herd. Out of an extraordinary cow herd and top end Richmond Bulls, you will not be disappointed with the future these heifers hold.

## 95 40 Open Commercial Angus x Lim-Flex x Limousin Heifers

**a** 5 Red Open Heifers

**b** 5 Red Open Heifers

**c** 5 Red Open Heifers

**d** 5 Red Open Heifers

**e** 5 Red Open Heifers

**f** 5 Red Open Heifers

**g** 4 RWF Open Heifers

**h** 5 Blk/BWF Open Heifers

~ 40 Commercial Heifers.

~ Birth dates range from April 1 – May 25 2017.

~ Genetics - Angus, Lim-Flex, and Limousin crosses.

~ Avg. weight 750 lbs as of Feb 1, 2018.

~ On a silage, roughage, and a 4-5 lb grain ration.

~ Herd health plan: Calves-at branding: Resvac 4/Somubac, Tasvax 8, One Shot and Bimectin. Cows-at preg testing: Tasvax 8, CattleMaster 4VL5 and Bimectin.

~ This is the top 40 heifers of the 2017 heifer calf crop. No females were retained.

These are Jim's selected 40 out of 140 replacement heifers.



~ Please discuss arrangements for delivery prior to purchase. Payment due prior to release of animals.





# Crooked Lakes Livestock & Grain Ltd.



We are extremely happy to have the Nelson family's consignment of their top end commercial heifers. We could not even begin to thank them enough for everything they do for us on sale day. Being close neighbors, we are always trading help back and forth, and every year at their branding, we are always beyond impressed with the performance in the calves and the quality in the cow herd. If you want to see a program that is maximizing a three-way cross and seeing tremendous results, then look no further. What Tracy and Mel are doing with their Angus, Simmental, and Limousin crosses is nothing to be taken lightly. The Nelson's have always purchased top quality Limousin and Angus bulls from us over the years, and it shows in their calf crops. Once again, the Nelson family has decided to offer up heifers right from the top of their replacement pen. These are the top 20 blacks from their herd of 180; and not to be taken lightly when saying these heifers are of the upmost quality. Do not miss an opportunity here.

### The Nelson Family

Tracy, Melanie, Lowell & Quinn Nelson

Home- 403-772-0000

Cell- 403-321-1056

We encourage you to call and visit about the heifers. We would be happy to answer any questions you may have.

## 96

## 20 Open Heifers Angus x Limousin, Angus x Simmental Cross

- a** 5 Black Open Heifers
- b** 5 Black Open Heifers
- c** 5 Black Open Heifers
- d** 5 Black Open Heifers

~ 20 Black, Brockle, Blaze commercial heifers.

~ Average weight at as of Feb 1, 2018 - 800 lbs.

~ Genetics - Angus, Limousin and Simmental crosses.

~ Birth date range- March 20- April 30, 2017

~ Herd health - June 10, 2017 8-way. Feb 1, 2018 Bovisheild VL5 and biometin.

~ Please discuss arrangements for delivery prior to purchase. Payment due prior to release of animals.





## Webster Farms



The Webster Family

Dave & Tammy  
Cell - 403-740-5177  
Home - 403-876-2778

Dan & Andrea  
Cell - 403 740 6696  
Home - 403-876-2064

We encourage you to call and visit about the heifers. We would be happy to answer any questions you may have.

Ever since we delivered the first bull out to the pasture years ago, we have been impressed with the quality in the cow herd, attention to detail and high expectations that they put on selecting their herd bulls. Running a one-iron angus cow herd, this is a program that doesn't leave anything out. We have always taken note of the incredible run of steers they sell in the fall at the Stettler Auction Mart. It was no surprise to us when we went to tour and select the heifers for our sale that we would find the quality of females that we were hoping for. We are very honoured to have this set of Angus heifers at our bull sale. Do not miss this opportunity to add these replacement heifers into your herd. We have seen the cows behind these females and you will not be disappointed with the future these heifers hold.

# 97

## 40 - 50 Open Commercial Angus Heifers

- a** 5 Black Open Heifers ~ 40-50 commercial Black Angus heifers.
- b** 5 Black Open Heifers ~ Avg. weight 750 lbs as of Feb 1, 2018. On a silage, roughage, and a 4-5 lb grain ration.
- c** 5 Black Open Heifers ~ Birth dates range from Mar 10 to May 10, 2017.
- d** 5 Black Open Heifers ~ Whole herd health plan - 7 way somnugen and parasitic control at branding, with booster 7 way, bovisheild one shot, Zuprevo, and parasitic control at weaning on Nov 7/2017.
- e** 5 Black Open Heifers
- f** 5 Black Open Heifers
- g** 5 Black Open Heifers
- h** 5 Black Open Heifers
- i** 5 Black Open Heifers
- j** 5 Black Open Heifers



~ These heifers will sell in their groups of 5. The highest bidder has first choice on which group of 5, with the option to take multiple groups.

~ Please discuss arrangements for delivery prior to purchase. Payment due prior to release of animals.





**Vaccination Programs:** All our livestock are on the SelectVac Gold program as well as given Ivomec for parasite control. Bulls: At two-three months of age these calves have been vaccinated with Bovi-Shield Gold One Shot and Ultrabac 7 Somubac. They are then given a booster shot pre-weaning with the same two vaccines. Breeding Females: in addition to the above, our females receive an annual shot of Bovi-Shield Gold FP 5 VL5 prior to breeding. The bred heifers also get vaccinated and bolstered with Scour Bos.

**Semen Testing:** All bulls have been tested, measured, and palpated through the Stettler Veterinary Clinic by Veterinarian Dr. Jackie Dobinson.

*If you're reading this, you are likely considering this great offering of bulls and females and everything that they will bring to your herd. Quality herd sires offer the fastest way to impact genetic potential in your herd. From a veterinary perspective we often encourage producers to know the health of the animal they are adding and ensure that it's going to be a good fit. Richmonds due diligence here is spot on. The vaccination and health program at Richmond Ranch is the gold standard of veterinary recommendations. From a reproduction standpoint, everything in this sale is reproductively sound with a veterinary breeding soundness examination and their own responsible breeder guarantee. Health is directly linked to production and production is directly linked to dollars. Years of experience here and sound practices make up the quality you'll see flipping through these pages. We are proud to work with Richmond Ranch and congratulate them on another great offering here!*

*Sincerely,*

*Jackie Dobinson, DVM  
Stettler Veterinary Clinic  
PH (403)742-3338  
Beef Specialist  
(403)896 5222*





# ***ANGUS DIVISION***

***Offering Elite Black Angus &  
Red Angus Genetics***



ANGUS





## Are you looking for calving ease? Check out our calving scores on each bull!

**Calving Rating or CR:** We have taken into consideration our knowledge on the cow families, calving histories, birth weight, and phenotypical shape as a baby calf to help you better select a herd bull based on your calving needs. These numbers are not calculated; they are an estimate based on how we ourselves would use the bull if we were breeding our own cows. \*All Bulls are guaranteed to calve easy on cows\*

3 = Could be safely used on heifers.

2 = May be used on heifers with a family history of calving ease. Could be used safely on all cows.

1 = Can be used safely on all cows.

ANGUS





*With the addition of our 6th generation here at Richmond Ranch; we are excited to be celebrating many firsts all over again!*



# Red Angus Two Year Old Bulls



**RS**

## Bar E-L Anthem DBR 46A

Red Northline Atlantic City  
**Red Wheel Alliance 22U**  
Red Wheel Auburn 2K  
Red SSS Boom Town 260D  
**Red Bar E-L Frado 209U**  
Red Bar E-L Scarlet 193S

BW	AWW 205 Day	TM	Mature Weight	EPD's			
				BW	WW	YW	Milk
88	753	44	2550	-0.8	44	16	16

1765119 Feb 14/13



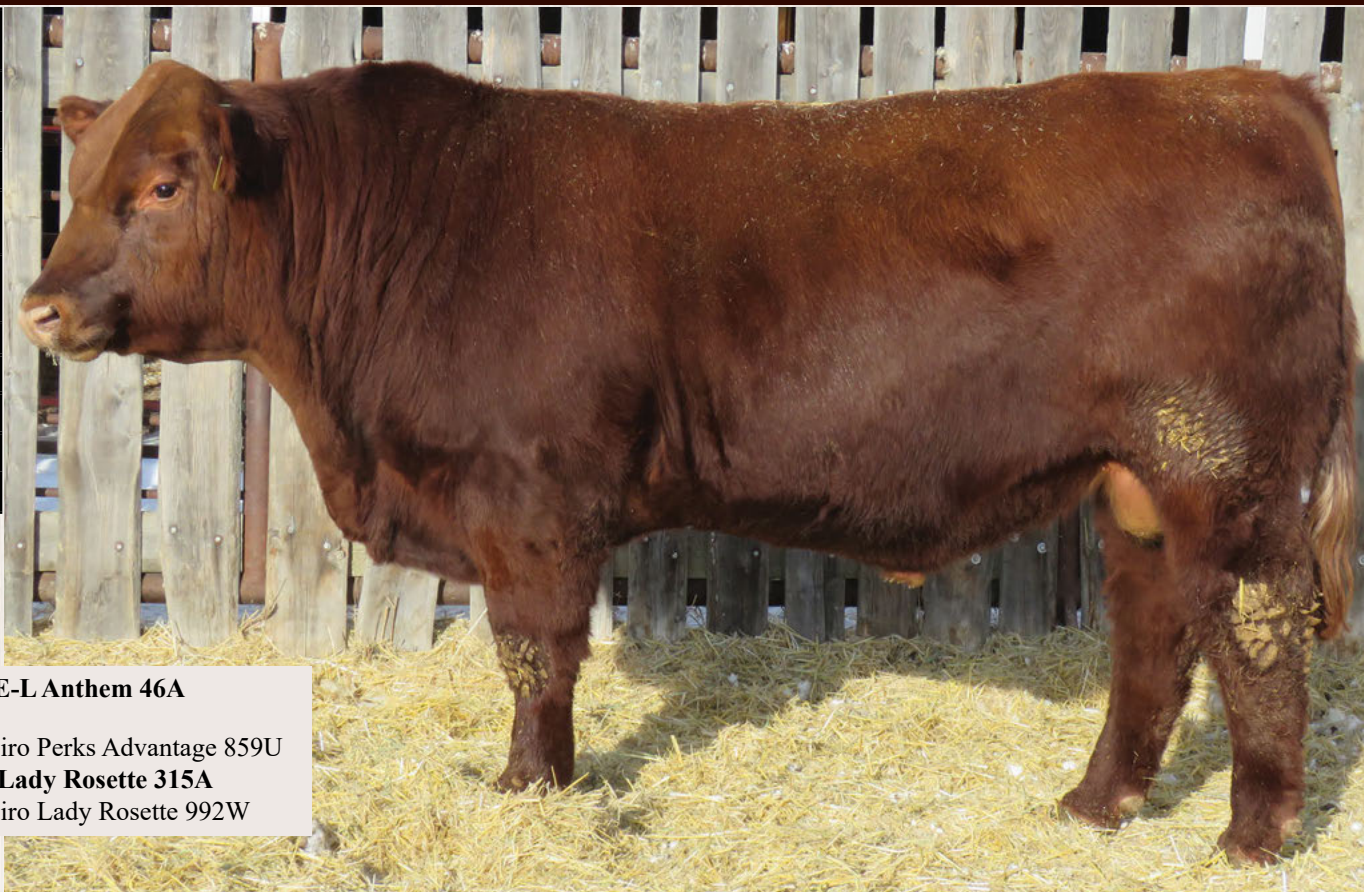


**98****Red Richmond Anthem SRD 148D**

April 20/2016

1939090

Red Angus	
BW	83
CR	3
DOC	3
AWW 205 Wt	
652	
Feb 1 2018 Wt.	
1790	
EPD's	
BW	-0.7
WW	46
YW	68
Milk	14

**Red Bar-E-L Anthem 46A**

Red Piro Perks Advantage 859U

**Red Piro Lady Rosette 315A**

Red Piro Lady Rosette 992W

**99****Red Richmond Anthem SRD 122D**

April 17/2016

1939086

Red Angus	
BW	80
CR	3
DOC	3
AWW 205 Wt	
663	
Feb 1 2018 Wt.	
1720	
EPD's	
BW	-1.5
WW	50
YW	75
Milk	14

**Red Bar-E-L Anthem 46A**

Red Piro Mission Statement P27

**Red Piro Lakme 339A**

Red Piro Lakme 807U





# Red Angus Yearling Bulls

Jan 4/2017  
2004564

## Red Richmond Emperor SRD 11E

**100**



Red Angus	
BW	85
CR	2
DOC	1
AWW 205 Wt	735
Feb 1 2018 Wt.	1350
EPD's	
BW	-0.4
WW	54
YW	87
Milk	16

**Red Bar E-L Anthem 46A**

Red Piro Mission Statement  
**Red Piro Brandina 305A**  
Red Piro Brandina 803U

Jan 4/2017  
2004564

## Red Richmond Anthem SRD 48E

**101**



Red Angus	
BW	90
CR	1
DOC	2
AWW 205 Wt	739
Feb 1 2018 Wt.	1220
EPD's	
BW	1.0
WW	51
YW	73
Milk	13

**Red Bar E-L Anthem 46A**

Red Gold-Bar Unique JW 1113U  
**Red MEM Duchess 38A**  
Red Southland Duchess 133R



**102****Red Richmond Rumbler****Jan 13/2017 SRD 45E 2004578**

Red Angus	
BW	70
CR	3
DOC	2
AWW 205 Wt	
748	
Feb 1 2018 Wt.	
1130	
EPD's	
BW	-3.6
WW	50
YW	76
Milk	16

Red Crowfoot 83X  
**Red Crowfoot Rumbler 3151A**  
 Crowfoot Lady 4X

Red Piro Tradesman 325A  
**Red Piro Soapy 5133C**  
 Red Piro Soapy 111Y

**103****Red Richmond Rumbler****Jan 20/2017 SRD 56E 2004584**

Red Angus	
BW	65
CR	3
DOC	2
AWW 205 Wt	
768	
Feb 1 2018 Wt.	
1280	
EPD's	
BW	-5.8
WW	48
YW	70
Milk	16

Red Crowfoot 83X  
**Red Crowfoot Rumbler 3151A**  
 Crowfoot Lady 4X

Red KCC Pinnacle 949-109  
**Red Piro Miss Patriot 520C**  
 Red Piro Miss Patriot 74S

**104****Red Richmond Evolution****Jan 23/2017 SRD 64E 2004587**

Red Angus	
BW	85
CR	3
DOC	2
AWW 205 Wt	
713	
Feb 1 2018 Wt.	
1180	
EPD's	
BW	-0.2
WW	48
YW	71
Milk	19

**Red Bar E-L Athem 46A**

Red Crowfoot Cowboy  
**Red Crowfoot 2109Z**  
 Crowfoot Pearl 6350S







## Red Richmond Rumbler

Jan 30/2017 SRD 71E 2012177

# 105

Red Crowfoot 83X  
**Red Crowfoot Rumbler 3151A**  
 Crowfoot Lady 4X

Red Lazy MC CC Detour 2W  
**Red Piro Brandina 519C**  
 Red Piro Brandina 122Y

Red Angus	
BW	75
CR	3
DOC	2
AWW 205 Wt	727
Feb 1 2018 Wt.	1145
EPD's	
BW	-3.1
WW	46
YW	67
Milk	18



## Red Richmond Rumbler

Jan 7/2017 SRD 26E 2011485

# 106

Red Crowfoot 83X  
**Red Crowfoot Rumbler 3151A**  
 Crowfoot Lady 4X

Red Get-A-Long Wander 905  
**Red Piro Redcap 548C**  
 Red Piro Redcap 287Z

Red Angus	
BW	70
CR	3
DOC	3
AWW 205 Wt	638
Feb 1 2018 Wt.	1120
EPD's	
BW	-5.3
WW	40
YW	62
Milk	17



## Red Richmond Ascension

Jan 8/2017 SRD 28E 2004571

# 107

Red Lazy MC Kingman 16W  
**Red Lauron Ascension 187A**  
 Red Running Bar Preview 1P

Red Lauron Zenith 3Z  
**Red Lauron April 176C**  
 RRed Lauron April 183A

Red Angus	
BW	65
CR	3
DOC	2
AWW 205 Wt	654
Feb 1 2018 Wt.	1080
EPD's	
BW	-5.3
WW	21
YW	36
Milk	23



**108****Red Richmond Rumbler**

Jan 12/2017 SRD 39E 2011486

Red Angus	
BW	60
CR	3
DOC	2
AWW 205 Wt	
677	
Feb 1 2018 Wt.	
1115	
EPD's	
BW	-6.8
WW	35
YW	56
Milk	17

Red Crowfoot 83X  
**Red Crowfoot Rumbler 3151A**  
 Crowfoot Lady 4X

Red Piro Tradesman 325A  
**Red Piro Maxine 5110C**  
 Red Piro Maxine 945W

**109****Red Richmond Best Man**

Jan 10/2017 SRD 34E 2012173

Red Angus	
BW	65
CR	3
DOC	2
AWW 205 Wt	
682	
Feb 1 2018 Wt.	
1170	
EPD's	
BW	-2.8
WW	48
YW	79
Milk	14

Red SSS Oly 554T  
**Red 1EN Best Man C401**  
 Red WCR Miss Floress EX A155

Red Biltrite Hitch 3X  
**Red Bar 4A Duchess 33C**  
 Red Bar 4A Duchess 1X

**110****Red Richmond Radar**

Jan 13/2017 SRD 43E 2004576

Red Angus	
BW	65
CR	3
DOC	2
AWW 205 Wt	
719	
Feb 1 2018 Wt.	
1070	
EPD's	
BW	-5.1
WW	41
YW	71
Milk	16

Red Piro Tradesman 325A  
**Red Piro Radar 524C**  
 Red Piro Brandina 803U

Red Get-A-Long Wander 905  
**Red Piro Holly 552C**  
 Red Piro Holly 0119X





# Red Angus Open Heifers



## Red Richmond Barbara

Jan 10/2017 SRD 31E 2004572

**111**

Red Bar-E-L Anthem 46A

Red PIRO Mission Statement 130Y

Red PIRO Barbara 3116A

PIRO Barbara 817U



Red Angus	
BW	85
DOC	2
AWW 205 Wt	638
EPD's	
BW	0.8
WW	54
YW	86
Milk	16



## Red Richmond Crimson Rose

Jan 6/2017 SRD 18E 2004569

**112**

Red Richmond Bando SRD 63B

Red PIRO Tradesman 307A

Red Richmond Crimson Rose SRD 39C

Red PIRO Brandina 305A



Red Angus	
BW	80
DOC	2
AWW 205 Wt	715
EPD's	
BW	-1.0
WW	51
YW	84
Milk	20

Grand Dam



## Red Richmond Raspberry

Jan 6/2017 SRD 17E 2004568

**113**

Red Bar-E-L Anthem 46A

Red PIRO Oscar 014X

Red PIRO Raspberry 371A

Red PIRO Raspberry 684S



Red Angus	
BW	70
DOC	2
AWW 205 Wt	641
EPD's	
BW	0.0
WW	48
YW	70
Milk	19



**Cattle Nutrition:** At Richmond Ranch our goal is to develop the cattle for longevity and succeSS in any program. The bulls are fed a growing ration of silage, chopped hay/straw, and a Masterfeeds' pellet at 1%. This system allows us to grow the bulls to seek the performance while maintaining their natural muscle shape. Our goal is to not only have bulls looking good for sale day, but most importantly, looking great while working in your pasture during breeding.

*This year we have seen some challenges in the feed industry. Ergot and toxins continue to be a concern in many ingredients. A global vitamin shortage has caused companies to be proactive in how they handle their supply. You can rest assured through these trying times companies like Masterfeeds and producers like Richmond Ranch have worked hard to ensure the nutrition supplied to these bulls is as strong as ever. The cattle are sound and functional. Like in past years, along with a balance of forages they are using a bull ration pellet from Masterfeeds, an Alltech company. This DG Bull ration pellet is formulated to fulfill the nutritional requirements of these developing bulls. Based around the use of corn distillers, this ration is highly digestible and will not burn out the cattle in anyway. Soya meal is added as a natural protein source. A complete balance of vitamins and minerals, key additives like BioPlex Zinc (an organic form of Zinc) are added for improved hoof integrity. Along with proper bunk management these bulls are fed to be fleshy but not fat. Longevity and fertility.... What more can I say; great cattle and great people.*


**Doug Roxborough**  
**Beef Specialist**  
**In good company.** (403)896 5222  
STRENGTHENING LEADERSHIP IN ANIMAL NUTRITION

This is the first year that we fed corn silage. We reduced our pelleted bull ration by 25% simply because of the nutritional value in the corn silage. The bulls appear to be growing and performing equal to other years. We expect that the longevity of these bulls should be exceptional with this natural and mild energy source. We plan to continue to feed corn silage in the future.

Corn Seed purchased from: BLJ Farms  
 Charlie Nemetz 403-741-5761

Corn Silage Put up by: G&T Custom Farming  
 Troy Monea 780-387-6313





# Black Angus Two Year Old Bulls



**RS**

**HF Decisive 56Z**

1706201 Jan 18/12

Connealy Consensus  
Sire: Connealy Consensus 7229  
Blue Lilly of Conanga 16

Vermillion Yellowstone  
Dam: Wilbar Ruby WJD 955N  
Willbar Ruby 161J

BW	AWW 205 Day	TM	Mature Weight	EPD's			
				BW	WW	YW	Milk
91	714	41	2400	1.7	40	74	24

**Richmond Decisive SRD 108D**

April 14/2016 1939085

**HF Decisive 56Z**

SOO LINE Kodiak 0126  
DMM Blackcap Essence 68Z  
DMM Blackcap Essence 18W



**114**

Black Angus	
BW	88
CR	1
DOC	2
AWW 205 Wt	
764	
Feb 1 2018 Wt.	
1875	
EPD's	
BW	3.4
WW	59
YW	97
Milk	21

**Richmond Decisive SRD 139D**

April 19/2016 1939089

**HF Decisive 56Z**

DMM Roar 16X  
DMM Blackcap Essence 37Z  
DMM Blackcap Essence 20U



**115**

Black Angus	
BW	90
CR	2
DOC	3
AWW 205 Wt	
652	
Feb 1 2018 Wt.	
1680	
EPD's	
BW	3.0
WW	40
YW	72
Milk	22



# 116 Richmond Decisive SRD 158D

April 21/2017

1939092

Black Angus	
BW	83
CR	2
DOC	3
AWW 205 Wt	
688	
Feb 1 2018 Wt.	
1800	
EPD's	
BW	1.6
WW	41
YW	76
Milk	24



**HF Decisive 56Z**

Willabar In Focus 87S

**Willabar Miss Morrison 71U**

Willabar Miss Morrison 128S

# 117 Richmond Decisive SRD 235D

May 7/2016

1939100

Black Angus	
BW	94
CR	1
DOC	4
AWW 205 Wt	
770	
Feb 1 2018 Wt.	
1880	
EPD's	
BW	4.6
WW	46
YW	86
Milk	27



**HF Decisive 56Z**

Willow Net Worth 2W

**Willow Burgess 9A**

Willow Burgess L24



May 12/2016  
1939101

## Richmond Decisive SRD 243D

**118**



Black Angus	
BW	92
CR	2
DOC	3
AWW 205 Wt	
614	
Feb 1 2018 Wt.	
1700	
EPD's	
BW	1.4
WW	46
YW	63
Milk	20

**HF Decisive 56Z**

HF Free Wheeler 91N  
**LLB Lavender Lady 380R**  
LLB Lavendar Lady 53Z

Feb 26/2016  
20044576

## Richmond Decisive SRD 40D

**119**



Black Angus	
BW	80
CR	1
DOC	3
AWW 205 Wt	
742	
Feb 1 2018 Wt.	
1830	
EPD's	
BW	1.1
WW	42
YW	73
Milk	26

**HF Decisive 56Z**

Remitall F Jet 30X  
**Remitall F Erica Kay 18A**  
Chico Erica Kay 4N



**RS****Richmond Bruno SRD 77B****March 21/2014 1777596**

Double AA Bardolene 50'08

**Fleury Bardolene 120Z**

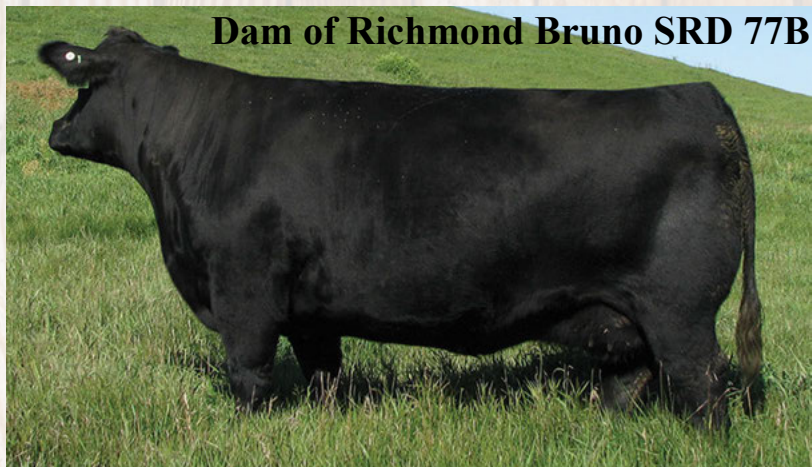
Double AA Annie K 580'06

HF EL Tigre 28U

**Mia of Ring Creek 104Y**

Mia of Ring Creek 5U

BW	AWW 205 Day	TM	Mature Weight	EPD's			
				BW	WW	YW	Milk
85	760	43	2450	2.0	43	80	23

**Dam of Richmond Bruno SRD 77B****120 Richmond Bruno SRD 218D****May 1/2016****1939098**

Black Angus	
BW	70
CR	2
DOC	2
AWW 205 Wt	
693	
Feb 1 2018 Wt.	
1800	
EPD's	
BW	0.8
WW	42
YW	46
Milk	26

**Richmond Bruno SRD 77B**

HF U-Connect 138Y

**Richmond Bright Future SRD 122B**

Richmond Zelda SRD 70Z

**121 Richmond Decisive SRD 138D****April 19/2016 1939088****HF Decisive 56Z**

Gumbo Gulch Creed 94S

**DMM Miss Essence 21Z**

DMM Miss Essence 37T

Black Angus	
BW	97
CR	1
DOC	2
AWW 205 Wt	
766	
Feb 1 2018 Wt.	
1940	
EPD's	
BW	6.0
WW	54
YW	89
Milk	28





April 22/2016  
1939094

# Richmond Believe SRD 162D

**122**



Black Angus	
BW	85
CR	2
DOC	2
AWW 205 Wt	
688	
Feb 1 2018 Wt.	
1870	
EPD's	
BW	3.8
WW	54
YW	89
Milk	18

**Believe 46B**

Crowfoot Equation 5793R  
XO Crowfoot Blackbird 2401Z  
XO Crowfoot Blackbird 8809U



*Pictured as a Two year Old*

March 31/2016  
1943880

# Richmond Believe SRD 65D

**123**



Black Angus	
BW	89
CR	2
DOC	3
AWW 205 Wt	
704	
Feb 1 2018 Wt.	
1890	
EPD's	
BW	4.4
WW	61
YW	104
Milk	16

**Believe 46B**

Duff New Attraction 6110  
Soo Line Effie 9135  
New Force Conagna 250R



*Donor Female*



# 124 Richmond Believe SRD 68D

April 2/2016

1943882



*Donor Female*

**Believe 46B**

Willabar In Focus 87S  
Willabar Ina 25W  
Willabar Ina 85S

B.W	CR	DOC	AWW 205 Wt	Feb 1 Wt.	Spring 2017 EPD's			
					BW	WW	YW	Milk
85	1	4	793	1990	3.8	58	93	17

# 125 Richmond Believe SRD 160D

April 21/2016 1939093

Black Angus	
BW	87
CR	2
DOC	2
AWW 205 Wt	
713	
Feb 1 2018 Wt.	
1860	
EPD's	
BW	3.9
WW	56
YW	92
Milk	16

**Believe 46B**

SAV 5175 Bando 2166  
LLB Princess Alyh 43T  
PAT Princess 43E







**RS Believe YDF 46B**

1791677 Feb 11/14

BW	AWW 205 Day	TM	Mature Weight	EPD's			
				BW	WW	YW	Milk
82	836	41	2575	4.4	76	115	16

YoungDale Knock Out 134U  
**Young Dale Xcaliber**  
Brookmore Tibbie 222T

Young Dale Panarama 66T  
**Young Dale Grace 126Z**  
Young Dale Grace 19T





Black Angus	
BW	86
CR	2
DOC	2
AWW 205 Wt	
851	
Feb 1 2018 Wt.	
1380	
EPD's	
BW	2.5
WW	66
YW	106
Milk	20

**Believe 46B**

BPF Special Focus 504  
**Richmond Special Fate SRD 50A**  
 Southland Fate 302X

**Dam of Richmond Entourage SRD 36E**

**Pictured as a  
Two Year Old**

Richmond Special Fate SRD 50A has been an exceptional female right from the start. At only two-years old, she proved herself to be a producer by raising our high selling Angus bull to date, purchased by Larry Nielsen. Every year this cow has weaned off a top calf in the pen and in just three short years made the donor list. Special Fate has been flushed, produced quality freezable eggs, and bred back for our very short early calving program. If you are looking for a bull to add maternal traits to your cowherd, then consider the strength that comes from this tremendous donor female.



Jan 19/2017  
2004583

## Richmond Believe SRD 55E

**127**



Black Angus	
BW	100
CR	1
DOC	2
AWW 205 Wt	780
Feb 1 2018 Wt.	1365
EPD's	
BW	6.2
WW	61
YW	96
Milk	13

**Believe 46B**

DMM Iron Creed 116W  
DMM Dyna Blackcap 31Z  
Braemar Dyna Blackcap

Jan 25/2017  
2004589

## Richmond Believe SRD 66E

**128**



Black Angus	
BW	88
CR	2
DOC	2
AWW 205 Wt	730
Feb 1 2018 Wt.	1200
EPD's	
BW	3.4
WW	57
YW	97
Milk	13

**Believe 46B**

Remitall F Jet 30X  
Remitall Lavendar Lady 51A  
Henderson Lavendar Lady 18W



# 129 Richmond Believe SRD 15E

Jan 5/2017

2004567

Black Angus	
BW	80
CR	2
DOC	3
AWW 205 Wt	
761	
Feb 1 2018 Wt.	
1340	
EPD's	
BW	1.0
WW	59
YW	101
Milk	11



**Believe 46B**

BUSHS Untouchable 622  
Richmond Anita SRD 21A  
KBJ Queen 689U

# 130 Richmond Element SRD 75E

Feb 7/2017

2004593

Black Angus	
BW	88
CR	1
DOC	3
AWW 205 Wt	
915	
Feb 1 2018 Wt.	
1310	
EPD's	
BW	4.9
WW	73
YW	117
Milk	16



**Believe 46B**

Geis Baloo 13'08  
Bar 4A Georgina 318B  
Geis Georgina 36'04





## Richmond Believe SRD 37E

Jan 11/2017

2012174

# 131

**Believe 46B**

Willabar Ambush 86K

**Willabar Countess 102S**

Willabar Countess 68J

Black Angus	
BW	75
CR	3
DOC	2
AWW 205 Wt	
630	
Feb 1 2018 Wt.	
1100	
EPD's	
BW	4.7
WW	54
YW	85
Milk	12



*Donor Female*



## Richmond Eclipse SRD 69E

Jan 28/2017

2004590

# 132

**Believe 46B**

HF Decisive 56Z

**Richmond Cliche SRD 3C**

Remintall F Erica Kay 18A

Black Angus	
BW	95
CR	1
DOC	4
AWW 205 Wt	
813	
Feb 1 2018 Wt.	
1240	
EPD's	
BW	5.9
WW	65
YW	104
Milk	18



## Richmond Eddie SRD 76E

Feb 10/2017

2004594

# 133

**Believe 46B**

Timber Trail Gridlock

**Richmond Zikita SRD 63Z**

LLB Lucille 657W

Black Angus	
BW	92
CR	1
DOC	3
AWW 205 Wt	
735	
Feb 1 2018 Wt.	
1190	
EPD's	
BW	4.6
WW	59
YW	102
Milk	8



# 134 Richmond Believe SRD 1E

Jan 1/2017 2004557

Black Angus	
BW	95
CR	1
DOC	3
AWW 205 Wt	
707	
Feb 1 2018 Wt.	
1225	
EPD's	
BW	4.3
WW	54
YW	84
Milk	15

**Believe 46B**

Remintall Roy Rogers 521R  
**LLB Blue Lass 192U**  
 Double J Blue Lass 192G



*Donor Female*



# 135 Richmond Believe SRD 2E

Jan 2/2017 2004558

Black Angus	
BW	85
CR	2
DOC	3
AWW 205 Wt	
670	
Feb 1 2018 Wt.	
1190	
EPD's	
BW	2.0
WW	52
YW	86
Milk	16

**Believe 46B**

Remitall F Jet 30X  
**Remitall F Erica Kay 18A**  
 Chico Erica Kay 4N



# 136 Richmond SRD 57E

Jan 21/2017 CM423589

Black Angus	
BW	115
CR	1
DOC	3
AWW 205 Wt	
693	
Feb 1 2018 Wt.	
1240	
EPD's	
BW	8.1
WW	71
YW	113
Milk	11

**Believe 46B**

MCATL Reflection 120-577  
**Richmond Angel SRD 19A**  
 SOO LINE Queen 9434





Jan 7/2017  
2012171

# Richmond Believe SRD 24E

**137**



*Donor Female*

## Believe 46B

Connealy Final Product  
**GF Rita 66Z**  
Whitestone Rita 666T

Black Angus	
BW	70
CR	3
DOC	2
AWW 205 Wt	
662	
Feb 1 2018 Wt.	
1220	
EPD's	
BW	3.0
WW	66
YW	111
Milk	18



# 138 Richmond Einstein SRD 41E

Jan 12/2017

1910386

Black Angus	
BW	85
CR	2
DOC	2
AWW 205 Wt	831
Feb 1 2018 Wt.	1270
EPD's	
BW	3.5
WW	65
YW	114
Milk	21



MOGCK Sure Shot  
**KG Solution 0018**  
 KG Rito Lady 8724  
 JL Eliminator 2061  
**KBJ Erica 50C**  
 KBJ Erica 294U

# 139 Richmond Exquisite Man

Jan 24/2017 SRD 65E 2004588

Young Dale Excaliber 32X  
**Young Dale Zorian 106Z**  
 Young Dale Pollyanna 78S

KBJ Black Marlin 012W  
**KBJ Exquisite Lady 75Z**  
 LLB Exquisite Lady 323N

B.W	CR	DOC	AWW 205 Wt	Feb 1 Wt.	EPD's			
					BW	WW	YW	Milk
85	3	5	691	1120	0.7	35	51	19





# Black Angus Open Heifers

Jan 16/2017  
2012176

## Richmond Evening Tinge SRD 53E

### 140



Black Angus	
BW	75
DOC	2
AWW 205 Wt	
660	
EPD's	
BW	1.2
WW	59
YW	101
Milk	19

MOGCK Sure Shot  
KG Solution 0018  
KG Rito Lady 8724  
  
Young Dale Zorian 106Z  
KBJ Evening Tinge 265C  
KBJ Evening Tinge 200A

Feb 2/2017  
2004592

## Richmond Cover Girl SRD 73E

### 141



Black Angus	
BW	80
DOC	2
AWW 205 Wt	
721	
EPD's	
BW	4.0
WW	62
YW	103
Milk	19

**Believe 46B**

HF Decisive 56Z  
Richmond Cover Girl SRD 31C  
Crowfoot Kelton 2015Z

**Grand Dam  
Donor Female**





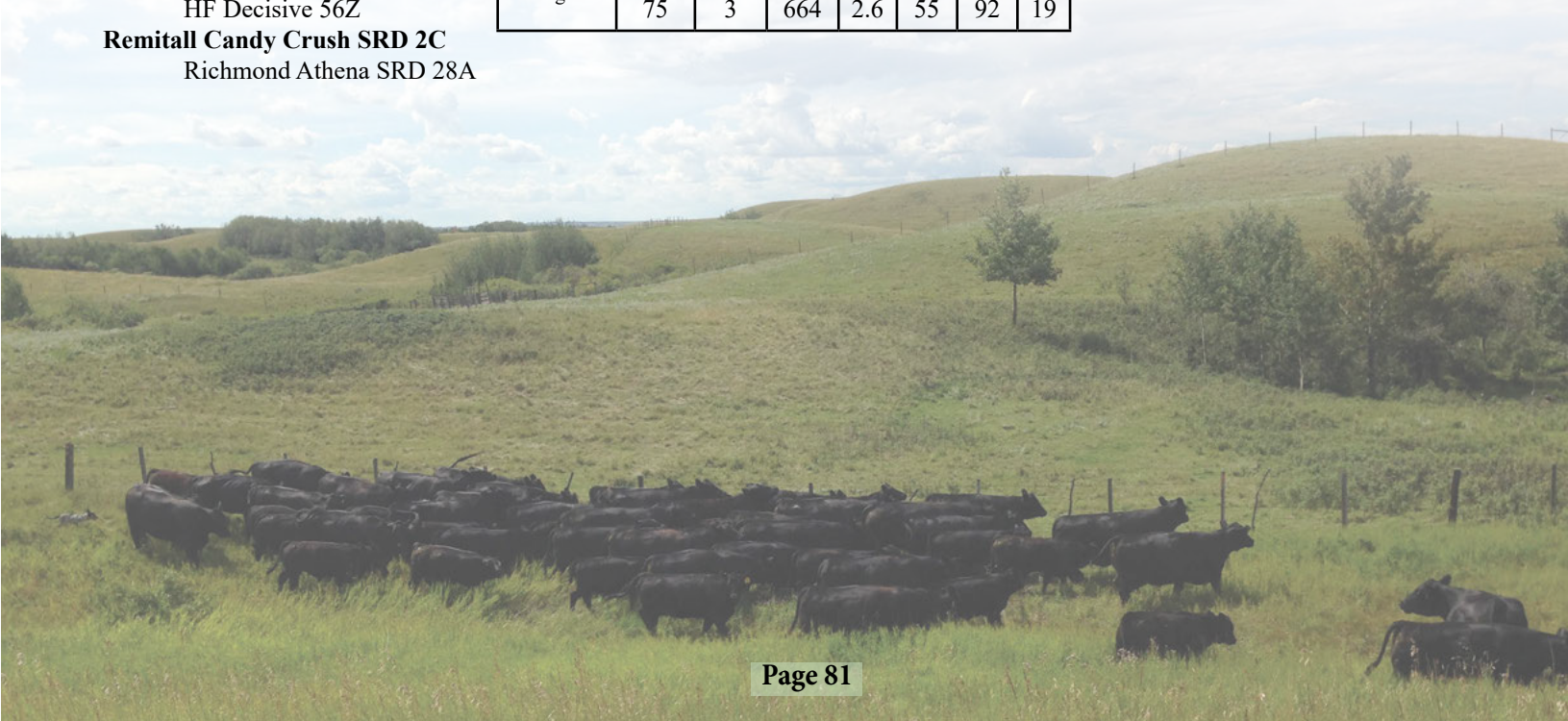
**Believe 46B**

HF Decisive 56Z

**Remitall Candy Crush SRD 2C**

Richmond Athena SRD 28A

Black Angus	B.W	DOC	AWW 205 Wt	EPD's			
				BW	WW	YW	Milk
	75	3	664	2.6	55	92	19





Jan 3/2017  
2004562

## Richmond Enchanted SRD 7E

**143**



Black Angus	
BW	80
DOC	2
AWW 205 Wt	
749	
EPD's	
BW	4.6
WW	69
YW	116
Milk	17

**Believe 46B**

Remitall F Odyssey 67X  
**Remitall F Blackcap 168A**  
Remitall F Blackcap 108Y

Jan 10/2017  
2004573

## Richmond Nora SRD 33E

**144**



Black Angus	
BW	87
DOC	2
AWW 205 Wt	
669	
EPD's	
BW	4.4
WW	49
YW	80
Milk	12

EXAR Blue Chip 1877B  
**OSU Blue Chip 4230**  
OSU Jilt 0105LLB 44U

Blackman 12A  
**LLB Nora 569B**  
LLB Heroine 794A





**145****Richmond Pride SRD 20E**

Jan 7/2017

2004570

Black Angus	
BW	85
DOC	2
AWW 205 Wt	
588	
EPD's	
BW	4.4
WW	57
YW	91
Milk	19

**Believe 46B**

Sealin Creek Heads Up 25S

**Willow Pride 21X**

Willow Pride L23

**146****Richmond Amazing Grace SRD 70E**

Jan 29/2017

2004591

Black Angus	
BW	80
DOC	2
AWW 205 Wt	
649	
EPD's	
BW	3.4
WW	57
YW	96
Milk	18

**Believe 46B**

HF U-Connect 38Y

**Richmond AmazingGrace SRD 40A**

LLB Rosebud Cub 649U



# Angus Bred Females

This April/May calving herd is made up of true do-it-themselves Ranch Cows that calve on grass. Calving ease and mothering ability are essential. With strict attention to consistency, fertility, longevity, udders, and feet & legs, we have reached a point where the herd quality has come together on all ends. These bred heifers were chosen out of our replacement pen and exposed to the same bulls that we used on our heifers. We are very confident in the calving ease of these bulls and have high hopes for these females.



## **RS** **Richmond Decisive SRD 158D**

**April 21/2016 1939092**

**HF Decisive 56Z**

**Willabar In Focus 87S**

**Willabar Miss Morrison 71U**

**Willabar Miss Morrison 128S**

The following four Black Angus heifers were pasture exposed June 30 - Aug 13 to Richmond Decisive SRD 158D who sells as Lot 116. Due to start calving April 4, 2018. These heifers were preg checked Feb 1/18 by certified veterinarian Dr. Jackie Dobinson



### **Richmond Bruno SRD 77B**

**Duff New Attraction 6110**

**SOO LINE Effie 9135**

**New Force Conanga 250R**

**147** Preg checked safe to calve mid April

### **Richmond Miss Effie SRD 259D**

**May 25/2016**

**1939083**

Black Angus	B.W	DOC	AWW 205 Wt	EPD's			
				BW	WW	YW	Milk
	70	3	605	1.2	36	70	22



*Donor Female*



**148** Preg checked safe to calve early April

### **Richmond Desire SRD 231D**

**May 5/2016**

**1939097**

**Richmond Bruno SRD 77B**

**HF Decisive 56Z**

**Richmond Better Half SRD 34B**

**Richmond Zoie SRD 72Z**

Black Angus	B.W	DOC	AWW 205 Wt	EPD's			
				BW	WW	YW	Milk
	70	2	658	1.8	39	70	23



**149**Preg checked safe to  
calve mid April**Richmond DarkBeauty SRD 249D**

May 15/2016

1939082

Richmond Bruno SRD 77B

HF U-Connect 38Y

Richmond Black Beauty SRD 116B

SOO LINE Lady Ruth 9185

Black Angus	B.W	DOC	AWW 205 Wt	EPD's			
				BW	WW	YW	Milk
	75	2	631	3.2	39	69	24

**150**Preg checked safe to  
calve mid April**Richmond Dark Fate SRD 248D**

May 13/2016

1939081

Richmond Bruno SRD 77B

HF U-Connect 38Y

Richmond Beating Fate SRD 81B

Southland Twist of Fate 161W

Black Angus	B.W	DOC	AWW 205 Wt	EPD's			
				BW	WW	YW	Milk
	75	2	669	3.2	45	79	23

**151**Preg checked safe to  
calve mid April**Richmond Dependance SRD 241D**

May 10/2016

1939080

HF Decisive 56Z

Willow Net Worth 05U

Willow Barbara 6A

Willow Barbara P43

Black Angus	B.W	DOC	AWW 205 Wt	EPD's			
				BW	WW	YW	Milk
	88	2	635	5.1	37	72	27

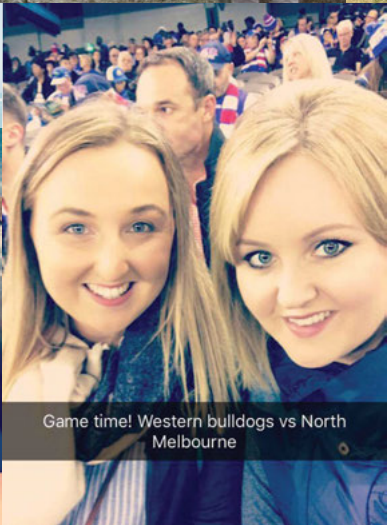
Pasture exposed June 30 - Aug 13 to  
Richmond Bruno SRD 246D.



Stop in and see us sometime!

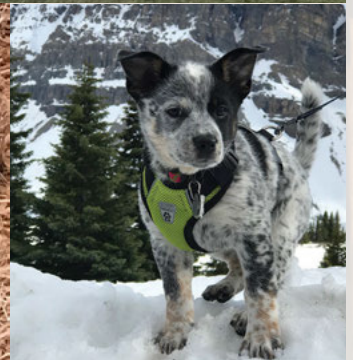


Tiffany's Aussie Twin Kate. Thank you for all of your help at Farmfair!

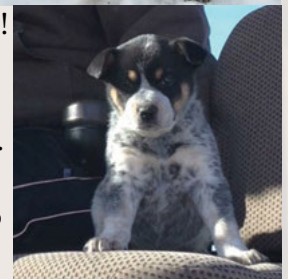


Tiffany in Australia visiting some of the families who have imported Richmond Genetics. Pictured on the left; Carmen & Lannah Sowden from FiveStar Limousin. Below; Brenden Lydford. Pictured far left; Kate Fairlie & Mason Galphin.

Richmond Genetics at work on the Canadian East Coast. Thank you to everyone for all of your amazing hospitality.



Stay tuned for upcoming puppies again this year! Diesel and Bailey are both good cattle dogs and are used daily at Richmond Ranch. These dogs are extremely gentle and are great with children. If you are thinking about getting a puppy for your family, or a great working dog, then talk to Samantha and Brandon!





## TERMS & CONDITIONS

**Guarantee:** Every lot is sold fully guaranteed. Every bull will be semen tested. We produce a quality product, therefore we stand behind that product 100%. All bulls will sell under the normal breeder guarantee recommended by the Canadian Limousin Association and the Canadian Angus Association – printed on the back of your receipt. Richmond Ranch is never responsible for more than the value of the bull.

**Terms of the Sale:** Cash or cheque at par, payable to Richmond Ranch LTD at the clerk's desk Sale Day. U.S. funds will be accepted at current rate of exchange. No release will be given until settlement has been made. Please talk to us prior to the sale to make further arrangements. Should any purchaser fail to settle for their purchase; Richmond Ranch reserves the right to resell the animal to their best advantage either publicly or privately, without further notice.

**Disputes:** In the case of any disputes, the Auctioneer will open the bid between the parties involved. If no further bid is made, the buyer will be the person from whom the auctioneer accepted the last bid. The auctioneer's decision in such matters will be final.

**Announcements:** Any announcements from the auction block will take precedence over the printed matter in the catalogue. Buyers are therefore cautioned to pay attention to any such announcements.

**Insurance:** Ownership to the purchaser commences when the Auctioneer's hammer falls. Each animal becomes the risk of the purchaser as soon as sold. Livestock insurance will be available at the clerk's desk.

**Accidents:** Those who attend the Sale do so at their own risk. Neither Richmond Ranch, sales staff, or the auctioneer assumes any responsibility in the matter and disclaims any legal or otherwise in the event of an accident or loss of or damage to property or person.

**Delivery Options:** We encourage you to discuss arrangements prior to the sale. Bulls will be delivered free of charge to central points in Western Canada at Richmond Ranches convenience and at owner's risk. For cattle going to Eastern Canada or the US, we will arrange trucking at minimal cost. If this delivery time is not convenient for the buyer, the bull(s) will be kept free of charge and the buyer can pick-up the bull(s) at their convenience. Richmond Ranch recommends that all bulls left on site are to be insured.

**Transfer of Paper:** The registration papers will be transferred to the new owner upon receiving payment in full. Do not under value this Paper – Breeders that register and transfer the papers to the new owners have been contributing information that has led to genetic progress of the breed and they have a proven product to offer you. Protection and Information may very well be the best value of all.

**By attending the Richmond Ranch Bull & Female Sale, you are granting permission for your picture to be used for promotional and advertising purposes related solely to the Richmond Ranch Grass Country Bull & Female Sale.**





Return Undeliverable  
Canadian Addresses To:

TBarC  
Box 2330  
Warman SK  
S0K 4S0



FRIDAY MARCH 9, 2018  
1:00 PM AT THE RANCH, RUMSEY AB

*WHERE QUALITY ISN'T A GOAL, IT'S A STANDARD*

***WWW.RICHMONDRANCH.COM***

