

*12th Annual* 

# **Proudly Western Bull Sale**



**Saturday, March 17, 2018 - 1 pm  
Whitewood Auction Barn  
Whitewood, SK**



**64 Yearling Simmental & SimAngus Bulls**

**Prairie Wind Farms - Scissor Creek Cattle Co. - Sun Rise Simmentals - Swan Lake Farms**

## FROM THE DESK AT T BAR...

Welcome to the 2018 edition of the Proudly Western Bull Sale. As we watch the cattle industry tackle the new year, one is excited to see the enthusiasm in the beef business. The demand for high quality cattle has never been as evident as it is today. Simmental genetics in particular are at an extremely high demand, as growth and high maternal traits are a main focus for many producers.

This year's offering will once again be one of diversity; as you flip over the sale lots, you will find a variety of genetics, both new and proven, blended into the red and black young Simmental herd bulls. There will be a selection of calving ease low birth bulls to choose from, as well as the heavy power boys to pound down the scale on your next calf crop. High maternal traits are built into these Simmental genetics, adding value and strength to your future replacement pen. The criteria of temperament, longevity, structure and phenotype are the four bases that each consignor has ensured in every entry.

The customer service and support from the Proudly Western group have always been second to none, from start to finish, always adding more value to your new purchase. Shop with confidence as these breeders are very selective and in tune with the product they put forth for your appraisal. We encourage you to visit with the consignors presale about the bulls in this offering.

We at T Bar C are available any time to talk Simmental cattle and assist you with your selections or bull requirements for this year's breeding season. We are very familiar with these programs and are able to assist with any absentee bidding requirements you may have, if you are unable to attend sale day as well.

See you in Whitewood,  
**Shane Michelson**



**Chris Poley**  
306-220-5006



**Shane Michelson**  
403-363-9973



**Ben Wright**  
519-374-3335

*Sale Management*



Box 2330, Warman, Saskatchewan S0K 4S0  
Ph: 306-933-4200 Fax: 306-934-0744  
info@tbarc.com www.buyagro.com

## CONSIGNORS...

**Prairie Wind Farms Ltd.....1-14**

### **WES & BRIAN MACK**

Box 882, Estevan, SK S4A 2A7  
Wes: 306.634.4410 Cell: 306.421.1853  
Brian: 306.634.4431 Cell: 306.421.2928  
email: wkmack@signaldirect.ca

**Scissors Creek Cattle Company .....15-30**

### **MARK & JENNALEE BEUTLER & FAMILY**

Box 358, Whitewood, SK S0G 5C0  
306.735.4434  
Mark cell: 306.735.7841  
email: jennalee\_e@hotmail.com  
website: www.scissorscreekcattle.com

**Sun Rise Simmentals.....31-35**

### **EVAN & LINDA CUSS**

Box 70, Spy Hill, SK S0A 3W0  
306.534.4700 Cell: 306.745.7431  
email: cuss@sasktel.net  
website: www.sunrisesimmentals.com

**Swan Lake Farms.....36-64**

### **GREG GOUDY**

Box 357, Stoughton, SK S0G 4T0  
306.457.2959  
Greg: 306.457.7730 Brandon: 306.631.8818  
email: simmentalman@hotmail.com

**For further information, contact any of the consignors  
or the sale manager.**

# 12th Annual PROUDLY WESTERN BULL SALE

SATURDAY, MARCH 17, 2018 • 1:00 PM

*Whitewood Auction Services, Whitewood, SK*

**OFFERING 64 YEARLING RED, BLACK & SIMMANGUS BULLS**

## **AUCTIONEER:**

Chris Poley 306.220.5006

## **SALE DAY PHONES:**

Shane Michelson 403.363.9973  
Ben Wright 519.374.3335  
Chad Wilson 306.577.1256  
Rhett Parks 306.735.7813

## **ACCOMMODATIONS:**

Whitewood Inn 306.735.2651  
Quest Motel 306.735.2627  
Bearclaw Casino 306.577.4577

## **BID ONLINE WITH:**

**Can't make it to the sale?**  
**Internet Bidding Available.**

To view this sale visit [www.dlms.ca](http://www.dlms.ca), Fill out the registration form located under registration and sign-up for your free user account and select a username and password.

**BIDDERS** - To be approved as a bidder, Log in to [dlms.ca](http://dlms.ca) and click BUYER APPROVAL tab, select the sale you are interested in bidding at and click sign up.

For more information  
Call DLMS Reps:  
Whitney Bosovich 780.991-3025  
Mark Shologan 780.699.5082

**DLMS**  
[www.dlms.ca](http://www.dlms.ca)

**PRE-SALE LUNCH  
AT 12:00 NOON**

## **DELIVERY OPTIONS:**

Purchaser's unable to take their bull home on sale day may leave the bulls at the respective consignors farms until required. Bulls will be looked after free of charge until April 15th, after which there will be a \$2/day charge. Delivery will begin shortly following the sale at the buyer's and seller's convenience. FREE Delivery within 100 miles; please make delivery arrangements with your bulls' consignor(s). All bulls returning home must be insured. Insurance will be available on sale day. \$100/bull rebate on bulls taken home sale day.

## **FERTILITY:**

All bulls will be scrotal measured and semen tested prior to sale day. All animals will carry the standard breeding guarantees, as specified by the Canadian Simmental Association. At no time shall the seller's liability exceed the purchase price of the animal

## **INSURANCE:**

Alameda Livestock Agencies  
Bonnie Thompson 306.483.7311 Office 306.489.2258

## **REFRESHMENT SPONSOR:**

3M Beef Supplies Inc.

**3M BEEF**  
**Supplies Inc.**

*Specializing in Beef Nutrition*

**ALL PRODUCTS DELIVERED!**

**DISTRIBUTOR OF:**

- Netwrap
- Silage Plastic & Grain Bags
- Licktubs
- Hay & Silage Inoculant
- Feed Testing

**CONTACT**  
**David Moffatt**  
Cell: 306-435-9245  
Home: 306-435-2019  
[sdmoffatt@sasktel.net](mailto:sdmoffatt@sasktel.net)  
Box 24  
Moosomin, SK  
S0G 3N0



# Prairie Wind Farms Ltd.

Welcome to the Proudly Western Bull Sale. It is always gratifying to see repeat customers and we certainly appreciate those who have made their way to Whitewood for the first time. We are confident that there is a bull for your needs.

Prairie Wind Farms is a family operation with a cow herd of 150 red/black Simmental cows. We calved our first Simmental in 1970 and have been breeding red and black since 1990. So with nearly fifty years of Sim Genetics, you can be assured there is no guess work, what you see is what you get.

The calves are all sired by our walking herd bulls. That's the way our program works, source the best herdsires you can find and develop a program around them. I believe as consistent a group of bulls as we have offered, to be a testament to the breeding power of our herdbulls.

Despite a drought this past summer with less than two inches of rain for the summer, the calves have developed extremely well, weaning heavy on hard dry grass and going right onto a pelleted bull ration.

If you have any questions please call or if you would like a tour, you are most welcome.

Prairie Wind Farms Ltd.  
Wes Mack

PRAIRIE WIND FARMS LTD.

Box 882, Estevan, SK S4A 2A7

Wes Mack: 306-634-4410 C: 306-421-1853

Brian Mack: 306-634-4431 C: 306-421-2928

Email: wkmack@signaldirect.ca



LOT 1



JDF HONKEY TONK 40C



MATERNAL SISTER



PRAIRIE WIND MISS 92U & CALF

## PRAIRIE WIND *Elvis* 8E

BPG1230486 JGM 8E JAN. 31, 2017 POLLED PUREBRED MALE

A moderate framed, stout, deep bodied calf with great hair coat, sired by JDF Honky Tonk, a "Stubby" son out of JDF Pepsi 61U. She is arguably one of the greatest cows in the breed. We purchased Honky Tonk as the high selling bull at the Northern Classic in Grand Prairie. Sound footed and deep bodied with a lot of muscle mass. The 92U cow is a black blaze face who milks extremely well. Elvis' sister was a high seller at \$11,000 to Meadow Acres at Shades of the Prairies in Brandon. A calf with unlimited potential backed by a pedigree that is proven to work.

LFE BS LEWIS 322U  
JDF HONKY TONK 40C  
JDF PEPSI 61U

R PLUS 2072M  
PRAIRIE WIND MISS 92U  
PRAIRIE WIND 28R

R PLUS BLACKEDGE  
LFE BS MS ARNOLD 135S  
REMINGTON ON TARGET 2S  
JDF MATTIE 61R  
LFE MR LEWIS 376J  
MISS R PLUS 927J  
EDN IRWIN 66J  
PRAIRIE WIND 73L

CE	BW	WW	YW	Milk	MCE	MWWT	BW	ACT WW	ACT YW
5.7	5.0	67.5	93.7	19.0	6.8	52.8	88 lbs.	910 lbs.	1285 lbs.

2

**PRAIRIE WIND *Eagle* 11E**

**BPG1230487 JGM 11E FEB. 3, 2017 POLLED PUREBRED MALE**

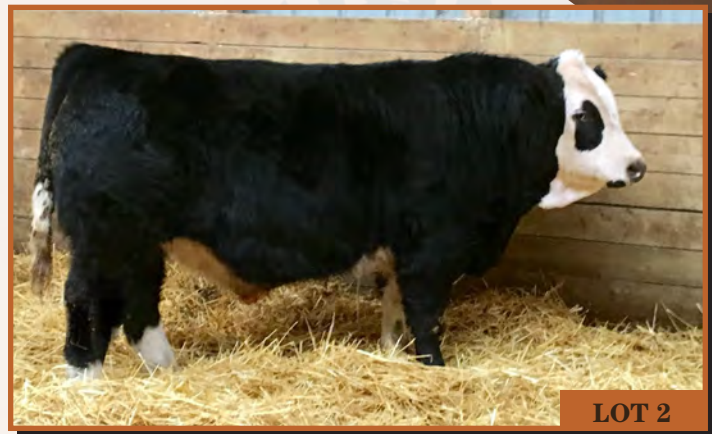
WHEATLAND BULL 680S  
**JFRS ABSOLUTE 42A**  
 ERIXON LADY 66W

TESS BLACK 57W  
**PRAIRIE WIND MISS 68Z**  
 PRAIRIE WIND MISS 29U

WHEATLAND BULL 131L  
 WHEATLAND LADY 351N  
 WESTFALL VOYAGER 721P  
 ERIXON LADY 107T  
 WHEATLAND BULL 680S  
 BBN MISS LIMITED 74P  
 KWA LIMITED 71P  
 PRAIRIE WIND 81P

CE	BW	WW	YW	Milk	MCE	MWWT	BW	ACT WW	ACT YW
7.1	3.5	63.0	98.1	21.8	8.0	53.3	88 lbs.	860 lbs.	1255 lbs.

An interesting calf for sure. He is solid made with two huge black goggles and some chrome, deep bodied with a great hip and quarter. He is sired by JFRS Absolute 42A, a 680S son who has really bred well. His mother, a good producer, is a black bald face cow.



**LOT 2**

3

**PRAIRIE WIND *Evolve* 13E**

**BPG1230489 JGM 13E FEB. 3, 2017 POLLED PUREBRED MALE**

WHEATLAND BULL 680S  
**JFRS ABSOLUTE 42A**  
 ERIXON LADY 66W

SCISSORS UNDENIABLE 14U  
**PRAIRIE WIND 53Y**  
 PRAIRIE WIND 61S

WHEATLAND BULL 131L  
 WHEATLAND LADY 351N  
 WESTFALL VOYAGER 721P  
 ERIXON LADY 107T  
 FOXY CDP BRING IT ON  
 MADER PLD BLACKPEARL 61M  
 R PLUS 2072M  
 PRAIRIE WIND ROSE 3G

CE	BW	WW	YW	Milk	MCE	MWWT	BW	ACT WW	ACT YW
6.0	4.5	68.9	109.9	20.6	8.5	55.1	100 lbs.	945 lbs.	1320 lbs.

A big powerful blaze face calf again out of 42A and mothered by the biggest bodied cow on the farm. He will for sure add performance to your calf crop.



**LOT 3**



**JFRS ABSOLUTE 42A**



**LOT 4**

4

**PRAIRIE WIND *Electric* 17E**

**BPG1230491 JGM 17E FEB. 5, 2017 POLLED PUREBRED MALE**

A sale feature for sure! A calf with a striking profile and the meat and muscle to complete the package. He is a good footed, deep bodied calf with a great top and hip. He is sired by the good JFRS Absolute 42A and mothered by a solid red cow. A brother sold to B.A. Wilson Farms, Wawota, SK. If you were looking for a blaze face, Electric is quite a calf.

WHEATLAND BULL 680S  
**JFRS ABSOLUTE 42A**  
 ERIXON LADY 66W

CMS REBEL 7X  
**PRAIRIE WIND 104Z**  
 PRAIRIE WIND 120R

WHEATLAND BULL 131L  
 WHEATLAND LADY 351N  
 WESTFALL VOYAGER 721P  
 ERIXON LADY 107T  
 REMINGTON GENERALEE 106T  
 CMS SEDUCTION 614S  
 PRAIRIE WIND BLACK ICE25K  
 PRAIRIE WIND 29J

CE	BW	WW	YW	Milk	MCE	MWWT	BW	ACT WW	ACT YW
5.9	4.0	64.3	98.6	22.8	8.8	54.9	94 lbs.	925 lbs.	1300 lbs.



LOT 5

5

**PRAIRIE WIND *Eclipse* 21E**

**BPG1230493 JGM 21E FEB. 7, 2017 POLLED PUREBRED MALE**

WHEATLAND BULL 680S  
**JFRS ABSOLUTE 42A**  
 ERIXON LADY 66W  
 TH RED CHUNK 24R  
**PRAIRIE WIND 8T**  
 PRAIRIE WIND 37L

WHEATLAND BULL 131L  
 WHEATLAND LADY 351N  
 WESTFALL VOYAGER 721P  
 ERIXON LADY 107T  
 TNT DYNAMITE BLACK L137  
 ULTRA GUNSMOKE MISS 3H  
 PRAIRIE WIND GRIZZLY 1H  
 PRAIRIE WIND 56G

CE	BW	WW	YW	Milk	MCE	MWWT	BW	ACT WW	ACT YW
5.4	4.7	64.7	97.7	23.1	7.9	55.5	98 lbs.	925 lbs.	1300 lbs.

Eclipse 21E is a calf you have to admire for his length of body and his power. His mother is a good uddered, solid red cow. A brother sold to D & D Cattle Company, Churchbridge, SK.



LOT 6

6

**PRAIRIE WIND *Encore* 23E**

**BPRS1230496 JGM 23E FEB. 7, 2017 POLLED PERCENTAGE MALE**

WHEATLAND BULL 680S  
**JFRS ABSOLUTE 42A**  
 ERIXON LADY 66W  
 TESS BLACK 57W  
**PRAIRIE WIND MISS 67A**  
 FNF-ANAN ANGUS/ANGUS

WHEATLAND BULL 131L  
 WHEATLAND LADY 351N  
 WESTFALL VOYAGER 721P  
 ERIXON LADY 107T  
 WHEATLAND BULL 680S  
 BBN MISS LIMITED 74P

CE	BW	WW	YW	Milk	MCE	MWWT	BW	ACT WW	ACT YW
4.8	2.1	39.3	64.3	12.9	4.0	32.6	90 lbs.	905 lbs.	1275 lbs.

Encore is a percentage calf with a beautiful blaze face. A calf that really profiles and exhibits a lot of volume. Great hair coat and sound footed on this good bull. His mother is an awesome female with a great udder and a super milker. A calf that will provide some vigor and maternal strength.



LOT 7

7

**PRAIRIE WIND *Explore* 25E**

**BPG1230499 JGM 25E FEB. 8, 2017 POLLED PUREBRED MALE**

WHEATLAND BULL 680S  
**JFRS ABSOLUTE 42A**  
 ERIXON LADY 66W  
 CMS REBEL 7X  
**PRAIRIE WIND MISS 54Z**  
 PRAIRIE WIND 8W

WHEATLAND BULL 131L  
 WHEATLAND LADY 351N  
 WESTFALL VOYAGER 721P  
 ERIXON LADY 107T  
 REMINGTON GENERALLEE 106T  
 CMS SEDUCTION 614S  
 EDN SAWYER 157S  
 PRAIRIE WIND 92M

CE	BW	WW	YW	Milk	MCE	MWWT	BW	ACT WW	ACT YW
6.1	4.3	66.5	101.0	22.2	8.5	55.4	86 lbs.	885 lbs.	1260 lbs.

These Absolute 42A sons are all designed the same, long bodied, clean made and stout. His mother is a hard working, fault free solid black cow.



LOT 8

8

**PRAIRIE WIND *Epic* 29E**

**BPG1230500 JGM 29E FEB. 10, 2017 POLLED PUREBRED MALE**

Epic 29E is a calf we think highly of, sound structured, deep and stout. The daughters of Absolute 42A are making awesome females with great udders and are milking very well. Expect Epic to sire the same as his mother, she is one of our best cows. His replacements will be super females.

WHEATLAND BULL 680S  
**JFRS ABSOLUTE 42A**  
 ERIXON LADY 66W

KWA LIMITED 71P  
**PRAIRIE WIND 32U**  
 PRAIRIE WIND 34N

WHEATLAND BULL 131L  
 WHEATLAND LADY 351N  
 WESTFALL VOYAGER 721P  
 ERIXON LADY 107T  
 BH LIMITED BLACK 015K  
 BBN MS BLACK FIGURES 14K  
 NICHOLS BLK DESTINY D12  
 PRAIRIE WIND 51G

CE	BW	WW	YW	Milk	MCE	MWWT	BW	ACT WW	ACT YW
7.7	2.6	58.5	89.9	23.5	8.6	52.7	92 lbs.	930 lbs.	1300 lbs.

9

**PRAIRIE WIND *Erupt* 32E**

**BPG1230502 JGM 32E FEB. 10, 2017 POLLED PUREBRED MALE**

WHEATLAND BULL 680S  
**JFRS ABSOLUTE 42A**  
 ERIXON LADY 66W

BOUNDARY TEMPTATION 96Z  
**PRAIRIE WIND MISS 2B**  
 PRAIRIE WIND 104Z

WHEATLAND BULL 131L  
 WHEATLAND LADY 351N  
 WESTFALL VOYAGER 721P  
 ERIXON LADY 107T  
 TCF/RCC TEMPTATION GJ640  
 KIMLAKE SARAH 623S  
 CMS REBEL 7X  
 PRAIRIE WIND 120R

CE	BW	WW	YW	Milk	MCE	MWWT	BW	ACT WW	ACT YW
6.2	3.8	63.8	100.7	23.3	7.3	55.2	86 lbs.	870 lbs.	1245 lbs.

Erupt 32E is an extremely long bodied calf out of 42A and a super two year old with an awesome udder. Again a great cow family is represented as JGM 104Z is his grandmother. She is the mother of JGM 17E, one of our feature calves.



LOT 9



**LOT 10**

10

**PRAIRIE WIND *Ease* 34E**

**BPG1230503 JGM 34E FEB. 11, 2017 POLLED PUREBRED MALE**

WHEATLAND BULL 680S  
**JFRS ABSOLUTE 42A**  
 ERIXON LADY 66W

TESS BLACK 57W  
**PRAIRIE WIND MISS 57B**  
 PRAIRIE WIND MISS 26W

WHEATLAND BULL 131L  
 WHEATLAND LADY 351N  
 WESTFALL VOYAGER 721P  
 ERIXON LADY 107T  
 WHEATLAND BULL 680S  
 BBN MISS LIMITED 74P  
 KWA LIMITED 71P  
 PRAIRIE WIND 81P

CE	BW	WW	YW	Milk	MCE	MWWT	BW	ACT WW	ACT YW
7.1	3.5	63.0	98.1	21.8	8.0	53.3	85 lbs.	850 lbs.	1225 lbs.

If you were looking for a bull for calving ease, may I suggest 34E. A light birth weight of eighty-five pounds and a little lighter boned will make him an option..



**LOT 11**

11

**PRAIRIE WIND *Extra* 53E**

**BPG1230504 JGM 53E FEB. 17, 2017 POLLED PUREBRED MALE**

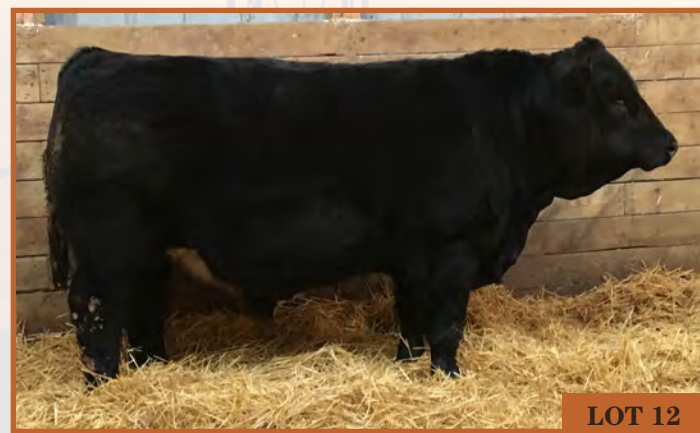
WHEATLAND BULL 680S  
**JFRS ABSOLUTE 42A**  
 ERIXON LADY 66W

SCISSORS UNDENIABLE 14U  
**PRAIRIE WIND MISS 7Z**  
 PRAIRIE WIND 71W

WHEATLAND BULL 131L  
 WHEATLAND LADY 351N  
 WESTFALL VOYAGER 721P  
 ERIXON LADY 107T  
 FOXY CDP BRING IT ON  
 MADER PLD BLACKPEARL 61M  
 KWA LIMITED 71P  
 PRAIRIE WIND 94T

CE	BW	WW	YW	Milk	MCE	MWWT	BW	ACT WW	ACT YW
6.5	3.8	63.8	99.3	20.7	8.5	52.6	100 lbs.	940 lbs.	1315 lbs.

A calf you have to admire for his power and balance. He a good footed calf with tremendous volume and dimension. His mother, a solid black cow certainly brought home a good one.



**LOT 12**

12

**PRAIRIE WIND *Ebony* 57E**

**BPG1230505 JGM 57E FEB. 20, 2017 POLLED PUREBRED MALE**

WHEATLAND BULL 680S  
**JFRS ABSOLUTE 42A**  
 ERIXON LADY 66W

KWA LIMITED 71P  
**PRAIRIE WIND MISS 50Y**  
 PRAIRIE WIND 2R

WHEATLAND BULL 131L  
 WHEATLAND LADY 351N  
 WESTFALL VOYAGER 721P  
 ERIXON LADY 107T  
 BH LIMITED BLACK 015K  
 BBN MS BLACK FIGURES 14K  
 HOOK'S RED QUORUM 55H  
 PRAIRIE WIND 18N

CE	BW	WW	YW	Milk	MCE	MWWT	BW	ACT WW	ACT YW
8.1	2.4	59.8	93.7	22.7	9.1	52.6	88 lbs.	890 lbs.	1265 lbs.

Another moderate birth weight calf with a big top and quarter; an easy going deep bodied calf with lots of volume.





**LOT 13**

**13**

**PRAIRIE WIND *Elite* 80E**

**BPG1230506 JGM 80E MAR. 13, 2017 POLLED PUREBRED MALE**

A pen favorite for sure. Elite 80E is a calf that is fault free. He is smooth made and stout with an incredible hip and quarter. He has lots of hair and is sure footed; make this guy a must see. Just a March calf, but he is all bull. His mother, a solid red cow is a very good cow. Brothers have sold to Amanda Czemerer, Cupar, SK and Foure Farming Ltd., Whitewood, SK.

WHEATLAND BULL 680S  
**JFRS ABSOLUTE 42A**  
 ERIXON LADY 66W

KWA LIMITED 71P  
**PRAIRIE WIND MISS 17X**  
 PRAIRIE WIND 113S

WHEATLAND BULL 131L  
 WHEATLAND LADY 351N  
 WESTFALL VOYAGER 721P  
 ERIXON LADY 107T  
 BH LIMITED BLACK 015K  
 BBN MS BLACK FIGURES 14K  
 R PLUS 2072M  
 PRAIRIE WIND 17M

CE	BW	WW	YW	Milk	MCE	MWWT	BW	ACT WW	ACT YW
7.2	3.2	62.0	90.9	22.4	9.2	53.4	90 lbs.	920 lbs.	1300 lbs.

**14**

**PRAIRIE WIND *Excite* 92E**

**BPG1230507 JGM 92E MAR. 22, 2017 POLLED PUREBRED MALE**

WHEATLAND BULL 680S  
**JFRS ABSOLUTE 42A**  
 ERIXON LADY 66W

SCISSORS UNDENIABLE 14U  
**PRAIRIE WIND MISS 108Y**  
 PRAIRIE WIND 32U

WHEATLAND BULL 131L  
 WHEATLAND LADY 351N  
 WESTFALL VOYAGER 721P  
 ERIXON LADY 107T  
 FOXY CDP BRING IT ON  
 MADER PLD BLACKPEARL 61M  
 KWA LIMITED 71P  
 PRAIRIE WIND 34N

CE	BW	WW	YW	Milk	MCE	MWWT	BW	ACT WW	ACT YW
6.7	3.5	62.3	98.2	20.9	8.1	52.0	90 lbs.	865 lbs.	1250 lbs

A March 22 son of 42A, but what a calf. He is so deep and stout with an incredible mother. A calf you will really like for his volume and muscle mass.



**LOT14**

# Scissors Creek Cattle Company

Welcome to the 12th annual Proudly Western Bull Sale. We are proud of the fact that we have sold bulls through this sale every year since it started. We continue to strive to produce the best quality bulls possible. Our 2018 offering are as strong and complete of a set as we have ever offered and they are the cream of the crop of the 50 plus bulls born in 2017.

The bulls and the cow herd are on a full vaccination program. We creep feed the bulls 30 to 45 days prior to weaning to help transition them onto feed. They were fed an oats based ration until December and then they were switched to a TMR which includes corn silage, hay and pellets. The TMR is designed to promote longevity and allow them to reach their genetic potential without adding a bunch of extra fat.

Customer satisfaction is very important to us and if any problems arise we will do our best to make things right. If you have time to stop at the farm before the sale we would love to tour you through the bull pen but if not we look forward to seeing you on sale day. Give us a call at any time so that we can discuss your bull needs and help you pick out a bull that will work for your program. Also, at this time we would like to thank all of our past bidders and buyers for their support and trust in our program.

Scissors Creek reserves the right to draw semen on any of the bulls in the sale for herd use only

## SCISSORS CREEK CATTLE COMPANY

Box 358, Whitewood, SK S0G 5C0

Home: 735-4434 Cell: 735-7841

Mark, Jennalee, Ryder, Jace & Nash Beutler

[www.scissorscreekcattle.com](http://www.scissorscreekcattle.com)



LOT 15

15

## SCISSORS *Eclipse* 1E

BPG1217185 SCCC 1E JAN. 4, 2017 POLLED PUREBRED MALE

Here is a feature bull that really checks all the boxes. He is a long, soggy ribbed bull with that extra muscle shape that is hard to find. His dam really knocked it out of the park on her first try and was one of the feature bred heifers at the Transcon Red & Black Sale in 2016. His sire, WFL Absolute, is a calving ease specialist and has calved well for us on heifers. This bull should be on your list if you are looking for a new herd bull!  
HOMO POLLED HETERO BLACK

LFE STRAIT UP 454W  
WFL ABSOLUTE 51Y  
WFL MS BLACK FLASH 8068U

WHEATLAND BULL 680S  
ULTRA 680 CHARM 35C  
ULTRA TARGET CHARM 14X

LFE MR LEWIS 514N  
LFE RS AMBER 216T  
R PLUS BLACKEDGE  
WFL MS RED FLASH 136P  
WHEATLAND BULL 131L  
WHEATLAND LADY 351N  
REMINGTON ON TARGET 2S  
ULTRA JOKER CASSADE 90N

CE	BW	WW	YW	Milk	MCE	MWWT	BW	ADJ WW	ADJ YW
7.4	3.4	67.7	106.1	18.5	8.1	52.4	88 lbs.	800 lbs.	1482 lbs.

16

**SCISSORS** *Effortless* 16E

BPG1217151 SCCC 16E JAN. 23, 2017 POLLED PUREBRED MALE

MR NLC UPGRADE U8676  
**MR TR HAMMER 308A ET**  
 SVF/HS EXPECTING A DREAM

DMF DIAMOND M BULL 2107Z  
**SCISSORS JASMINE 35C**  
 SCISSORS SWEETNESS 98Z

ELLINGSON LEGACY M229  
 MS NLC MOJO S6119 B  
 CNS DREAM ON L186  
 SVF/NJC EXPECTATION N206  
 WHEATLAND BULL 680S  
 LFE CANDY KISSES 39S  
 LRX SWEET MEAT 105X  
 MADER PLD BLACKPEARL 61M

CE	BW	WW	YW	Milk	MCE	MWWT	BW	ADJ WW	ADJ YW
4.1	2.7	65.8	102.8	18.4	5.8	51.3	82 lbs.	687 lbs.	1369 lbs.

Effortless is a moderately built bull that is structurally correct in every way. He is thick, deep and hairy. His dam is another 2107Z daughter that crossed very well with Hammer. His 82 lb. birth weight and smooth shoulders should allow him to calve easily. HOMO POLLED HOMO BLACK



LOT 16

17

**SCISSORS** *Edge* 10E

BPG1217149 SCCC 10E JAN. 18, 2017 POLLED PUREBRED MALE

MR NLC UPGRADE U8676  
**MR TR HAMMER 308A ET**  
 SVF/HS EXPECTING A DREAM

DMF DIAMOND M BULL 2107Z  
**SCISSORS JASMINE 15C**  
 SCISSORS BALDY 2Z

ELLINGSON LEGACY M229  
 MS NLC MOJO S6119 B  
 CNS DREAM ON L186  
 SVF/NJC EXPECTATION N206  
 WHEATLAND BULL 680S  
 LFE CANDY KISSES 39S  
 SCISSORS UNDENIABLE 14U  
 DRIFTING "M" MISSULTRA53P

CE	BW	WW	YW	Milk	MCE	MWWT	BW	ADJ WW	ADJ YW
4.2	4.0	79.9	125.8	16.5	8.4	56.5	84 lbs.	816 lbs.	1387 lbs.

A baldie Hammer son that has massive muscle shape and has that extra look and completeness that is hard to find. He also has a light birth weight at 84 lbs. and was born unassisted to a first calf heifer. He is deep bodied, wide topped, and moves out freely. His dam comes from one of the most consistent cow families on the farm. HOMO POLLED HOMO BLACK



LOT 17



LOT 18

18

**SCISSORS** *Easton* 39E

BPTG1216622 SCCC 39E FEB. 06, 2017 POLLED PUREBRED MALE

Here is a powerful calf that is the result of embryos we purchased from Mader Ranches and he comes from the highly regarded Victory Secret cow. Easton is wide topped, very deep and extra-long. His low birth weight and excellent performance numbers are hard to duplicate. Riddler progeny were highly sought out at the past fall sales. HOMO BLACK

LFE GOTHAM 819Y  
**LFE THE RIDDLER 323B**  
 LFE BS CHARO 23Y

MADER SHAKELTON 57Y  
**MADER VICTORIASECRET 110B**  
 REMINGTON MS MRL 200U

LFE THE DARK NIGHT 350U  
 LFE BEST LADY 47W  
 TNT TANKER U263  
 LFE CHARO 3N  
 WHEATLAND BULL 680S  
 JENI BLACK WHAMMY 1W  
 REMINGTON ON TARGET 2S  
 MRL MISS 495N

CE	BW	WW	YW	Milk	MCE	MWWT	BW	ADJ WW	ADJ YW
5.9	3.8	85.6	129.7	20.4	9.3	63.2	84 lbs.	752 lbs.	1453 lbs.



DMF DIAMOND M BULL 2107Z

LOT 19

19

**SCISSORS** *Evolution* 22E

BPG1200913 SCCC 22E JAN. 29, 2017 POLLED PUREBRED MALE

Evolution is full of meat and muscle. He is deep, stout and strides out effortlessly. His dam has had three 2107Z progeny and they have all been outstanding and her last five calves have either been replacement heifers or bulls sold in this sale. He has a full brother working at the Brehaut Brothers farm and a full sister in the bred heifer pen who is a favorite. HOMO BLACK

WHEATLAND BULL 680S  
DMF DIAMOND M BULL 2107Z  
LFE CANDY KISSES 39S

FOXY CDP BRING IT ON  
SCISSORS VANESSA 4U  
CALICO BLACK PRU 409P

WHEATLAND BULL 131L  
WHEATLAND LADY 351N  
TNT DYNAMITE BLACK L137  
LFE TINA 15G  
LFE BRING DOWN THE HOUSE  
LFE SHEILA 111M  
SRS 914 PREFERRED BEEF  
CALICO FULL DECK 841H

CE	BW	WW	YW	Milk	MCE	MWWT	BW	ADJ WW	ADJ YW
5.2	5.2	72.8	113.1	22.0	7.5	58.4	92 lbs.	824 lbs.	1381 lbs.



LOT 20

20

**SCISSORS** *Element* 31E

BPG1200916 SCCC 31E FEB. 3, 2017 POLLED PUREBRED MALE

WHEATLAND BULL 680S  
DMF DIAMOND M BULL 2107Z  
LFE CANDY KISSES 39S

MADER P BLACK IRONMAN 22U  
SCISSORS IRONLADY 25X  
SCISSORS SHANA 22S

WHEATLAND BULL 131L  
WHEATLAND LADY 351N  
TNT DYNAMITE BLACK L137  
LFE TINA 15G  
REMINGTON ON TARGET 2S  
CG BLACK OPAL 652S  
SPRINGCREEK POWERLINE 94P  
SCISSORS NAT 6N

CE	BW	WW	YW	Milk	MCE	MWWT	BW	ADJ WW	ADJ YW
-0.6	8.1	84.2	121.7	21.0	-1.3	63.1	104 lbs.	865 lbs.	1356 lbs.

31E is a soggy, sound and hairy calf and is as deep, thick and big footed as any of the bulls in the pen. He should add depth of body and stoutness to any cow herd. His dam is a beautiful Ironman daughter that is a front pasture type of a cow. DMF 2107Z was purchased from Diamond M Ranch four years ago and has been a great addition to our herd. He produces very consistent bulls and you could argue his females are even better. HOMO POLLED HETERO BLACK



LOT 21

21

**SCISSORS** *Empire* 46E

BPG1216576 SCCC 46E FEB. 7, 2017 POLLED PUREBRED MALE

WHEATLAND BULL 680S  
DMF DIAMOND M BULL 2107Z  
LFE CANDY KISSES 39S

LRX SWEET MEAT 105X  
SCISSORS SWEETNESS 24Z  
SCISSORS ROSIE 6R

WHEATLAND BULL 131L  
WHEATLAND LADY 351N  
TNT DYNAMITE BLACK L137  
LFE TINA 15G  
SAS T101 SWEET MEAT  
LRX POPPY 83P  
KENCO/MF POWERLINE 204L  
KAPPES KIRSTEN K172

CE	BW	WW	YW	Milk	MCE	MWWT	BW	ADJ WW	ACT YW
5.0	3.8	65.2	92.9	21.1	7.3	53.7	88 lbs.	732 lbs.	1326 lbs.

Here is a nicely constructed black baldie bull that will add chrome and a lot more too any herd. Empire is very moderate framed, deep bodied and ideal in his structure. His dam is a heavy milker and from one of the strongest female making cow families on the farm and she has never had a calf with a birth weight over 90 lbs. HOMO BLACK

22

### SCISSORS *Edition* 59E

PG1216582 SCCC 59E FEB. 12, 2017 POLLED PUREBRED MALE

KUNTZ SUPER DUTY 4Y  
SVS PLATINUM 419B  
REMINGTON MS RED ESSENCE

BAR KR TORNADO 2T  
SCISSORS TENNESSEE 77Z  
CALICO LAUREN 538R

NCB RED SUSPECT 30S  
MISS R PLUS 7037T  
WS BEEF MAKER R13  
IPU MS. RED ESSENCE 134U  
MRL HURRICANE 27R  
BAR KR MS GOOD A NUFF 8R  
LAZY S RED 236M  
CALICO MERIBETH 337N

CE	BW	WW	YW	Milk	MCE	MWWT	BW	ADJ WW	ADJ YW
5.7	4.3	75.2	109.5	15.2	0.6	52.8	94 lbs.	824 lbs.	1256 lbs.

Edition is a super moderate, very stout and belly dragging kind of a bull. His dam is a rising star at our place as her first four calves have either been replacement females or bulls sold in this sale. A full brother sold last year to Wayne Burbach. HOMO POLLED



LOT 22

23

### SCISSORS *Explosion* 55E

PG1216050 SCCC 55E FEB. 10, 2017 POLLED PUREBRED MALE

KUNTZ SUPER DUTY 4Y  
SVS PLATINUM 419B  
REMINGTON MS RED ESSENCE

SPRINGCREEK TANK 57P  
SPRINGCREEK RED TARA 78S  
SPRINGCREEK REA 25N

NCB RED SUSPECT 30S  
MISS R PLUS 7037T  
WS BEEF MAKER R13  
IPU MS. RED ESSENCE 134U  
MSR KANSAS TANK 235M  
SYS HONEY DEW L137  
LRS RED REALITY 33J  
SPRINGCREEK PATTY 58L

CE	BW	WW	YW	Milk	MCE	MWWT	BW	ADJ WW	ADJ YW
4.2	4.0	79.9	125.8	16.5	8.4	56.5	98 lbs.	766 lbs.	1347 lbs.

55E is a blood liver red Platinum son that is maybe the deepest bodied red bull in the pen. He is hairy, stout and correct. His dam has a square udder and was very productive with this calf. SVS Platinum is our red walking herd sire that we purchased from Sunny Valley Simmentals three years ago for \$25,000 in partnership with Diamond M Ranch. He's a Super Duty son who calves easily; we are impressed with his first daughters to calve this year. HOMO POLLED



LOT 23

24

### SCISSORS *Emblem* 76E

PG1216057 SCCC 76E FEB. 18, 2017 POLLED PUREBRED MALE

KUNTZ SUPER DUTY 4Y  
SVS PLATINUM 419B  
REMINGTON MS RED ESSENCE

MUIRHEAD'S KOSMO 27N  
SCISSORS KERRI 21U  
SCISSORS SHANA 22S

NCB RED SUSPECT 30S  
MISS R PLUS 7037T  
WS BEEF MAKER R13  
PU MS. RED ESSENCE 134U  
JDN CISCO'S PRIDE 10K  
CZAR MS KONZES REWARD 97G  
SPRINGCREEK POWERLINE 94P  
SCISSORS NAT 6N

CE	BW	WW	YW	Milk	MCE	MWWT	BW	ADJ WW	ADJ YW
5.1	5.3	74.3	107.3	22.4	1.1	59.6	104 lbs.	873 lbs.	1364 lbs.

Emblem is a dark red, hairy, stout and tanky bull. He is very smooth shouldered and strong topped. His dam has three very good daughters in our herd. His pedigree is different than most of the mainstream bulls out there. We are quite high on this bull and think he has all the tools to do great things for his new owner. HOMO POLLED



LOT 24



SVS PLATINUM 419B



25

**SCISSORS** *Earl* 70E

PTG1216624 SCCC 70E FEB. 15, 2017 POLLED PUREBRED MALE

LRX THE GODFATHER 141Z  
**MADER IM A GANGSTER 20B**  
 MADER LADY GOLD 131Y

RCC/TCF LINE DRIVE M181  
**SPRINGCREEK LINNE 72R**  
 SPRINGCREEK PHALTLESS 74N

HARVIE JDF WALLBANGER111X  
 LRX MS ACE 10X  
 CDI/PLCC DR. PHIL 145U  
 ERIXON LADY 202S  
 HC POWER DRIVE 88H  
 BOZ SWEET TEMPTATION  
 PPSR NOPHALT 20H  
 SYS HONEY DEW L137

CE	BW	WW	YW	Milk	MCE	MWWT	BW	ADJ WW	ADJ YW
5.2	5.1	80.1	124.0	16.1	3.6	56.2	104 lbs.	846 lbs.	1520 lbs.

Here is a flush brother to Lot 26 - SCCC 54E that we are quite happy with. 70E is a round muscled and straight topped bull that profiles well. He is smooth shouldered and wide from hooks to pins. Their dam, 72R, was flushed successfully a few year ago. Three full siblings are in the bred heifer pen calving this year and have great udders and another son sold to McCormack Family Ranch in 2016 for \$12,250. HOMO POLLED by pedigree.



26

**SCISSORS** *Emperor* 54E

PTG1216623 SCCC 54E FEB. 10, 2017 POLLED PUREBRED MALE

LRX THE GODFATHER 141Z  
**MADER IM A GANGSTER 20B**  
 MADER LADY GOLD 131Y

RCC/TCF LINE DRIVE M181  
**SPRINGCREEK LINNE 72R**  
 SPRINGCREEK PHALTLESS 74N

HARVIE JDF WALLBANGER111X  
 LRX MS ACE 10X  
 CDI/PLCC DR. PHIL 145U  
 ERIXON LADY 202S  
 HC POWER DRIVE 88H  
 BOZ SWEET TEMPTATION  
 PPSR NOPHALT 20H  
 SYS HONEY DEW L137

CE	BW	WW	YW	Milk	MCE	MWWT	BW	ADJ WW	ADJ YW
5.2	5.1	80.1	124.0	16.1	3.6	56.2	98 lbs.	760 lbs.	1453 lbs.

Here is a flush brother to Lot 25 - SCCC 70E that we are quite happy with. 54E is a long bodied and straight topped bull. He is big footed and square hipped. Their dam, 72R, was flushed successfully a few year ago. Three full siblings are in the bred heifer pen calving this year and have great udders and another son sold to McCormack Family Ranch in 2016 for \$12,250. HOMO POLLED by pedigree.



27

**SCISSORS** *Evan* 72E

BPG1200912 SCCC 72E FEB. 17, 2017 POLLED PUREBRED MALE

SPRINGCREEK LINER 56U  
**SUN RISE BLACK 21C**  
 KOP MS WHEATIE 52U

DOUBLE BAR D DRIFTWOOD 83  
**CG BLACK OPAL 785T**  
 CG OPAL 457P

RCC/TCF LINE DRIVE M181  
 NEVAS L93  
 WHEATLAND BULL 655S  
 KOP MS FLASHBACK 42N  
 DRIFTING "M" LP 59L  
 DOUBLE BAR D LILI 59M  
 TNT SURVIVOR K220  
 CG OPAL 111L

CE	BW	WW	YW	Milk	MCE	MWWT	BW	ADJ WW	ADJ YW
1.8	7.5	85.6	131.0	23.8	7.1	66.6	106 lbs.	872 lbs.	1541 lbs.

72E is a rugged bull that is full of performance and crushes the scale. He is super long bodied, thick and correct. His dam always brings home a huge calf and milks very well. His sire was used to clean up when we had a bull go down and we wished we had used him more.

28

**SCISSORS** *Effective* 33E

BPG1216600 SCCC 33E FEB. 04, 2017 POLLED PUREBRED MALE

SVS CAPTAIN MORGAN 11Z  
**SUN RISE BACARDI 8B**  
 SUN RISE BLACK 78U

SCISSORS IRONCLAD 9Y  
**SCISSORS IRONLADY 2B**  
 SCISSORS SAVANNAH 37Z

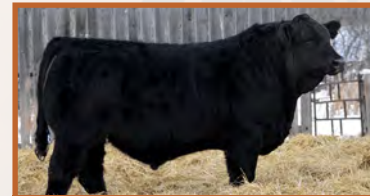
HARVIE JDF WALLBANGER111X  
 SUNNYVALLEY BLK JENNA 88U  
 SPRINGCREEK LEVI 39S  
 SUN RISE BLACK 45R  
 MADER P BLACK IRONMAN 22U  
 WL B 26F JANE 356N  
 ACS RED SURGE 918W  
 SCISSORS KOSMOPOLITAN 15W

CE	BW	WW	YW	Milk	MCE	MWWT	BW	ADJ WW	ACT YW
6.7	2.1	66.5	96.9	25.4	9.5	58.7	86 lbs.	812 lbs.	1252 lbs.

Here is a calving ease son out of Bacardi that is also very stout and deep. He has had that herd bull look since a young age and is very structurally correct. His dam's udder is picture perfect and her first daughter just calved and udder quality definitely runs in the family. His EPDs are very balanced and he should excel in any program. HOMO POLLED HETERO BLACK.



LOT 28



BACARDI 8B - SIRE TO LOTS 28 & 29

29

**SCISSORS** *Explorer* 81E

BPG1200919 SCCC 81E FEB. 22, 2017 POLLED PUREBRED MALE

SVS CAPTAIN MORGAN 11Z  
**SUN RISE BACARDI 8B**  
 SUN RISE BLACK 78U

KIMLAKE INSPIRATION 90T  
**BLCC MISS INSPIRATION256Y**  
 BLCC MISS HOUSTON 76S

HARVIE JDF WALLBANGER111X  
 SUNNYVALLEY BLK JENNA 88U  
 SPRINGCREEK LEVI 39S  
 SUN RISE BLACK 45R  
 LFE RED INSPRIATION 834L  
 MISS TEE 68K  
 PRL HOUSTON 005H  
 BLCC MISS MERIDITH 153M

CE	BW	WW	YW	Milk	MCE	MWWT	BW	ADJ WW	ADJ YW
3.4	4.8	66.3	96.9	25.4	7.3	58.6	96 lbs.	723 lbs.	1320 lbs.

Explorer is a very correct and square hipped bull. His dam has some fullblood influence and raised an awesome bull that sold to Wade Jooristy last year. A group of heifers out of this guy will be impressive. HETERO BLACK



LOT 29

30

**SCISSORS** *Excel* 109E

BPUN1200920 SCCC 109E MAR. 22, 2017 POLLED MALE

ANGUS/ANGUS

WHEATLAND BULL 680S  
**SCISSORS ZAPHIRE 36Z**  
 JENI BLACK WHAMMY 1W

WHEATLAND BULL 131L  
 WHEATLAND LADY 351N  
 TNT DYNAMITE BLACK L137  
 ROLLING KAREN 11K

CE	BW	WW	YW	Milk	MCE	MWWT	BW	ADJ WW	ADJ YW
-	-	-	-	-	-	-	88 lbs.	842 lbs.	1354 lbs.

Here is a half-blood bull that is sound, thick and attractive. His mother is one of our best Simmental cows and had Ryder's 4-H calf two years ago. To make a long story short the 4-H pasture is next to the heifer pasture and the Angus heifer bull came for a visit. He is impressive and should calve easily with that injection of Angus.



LOT 30

# Sun Rise Simmentals

SUN RISE SIMMENTALS  
EVAN & LINDA CUSS

Box 70, Spy Hill, SK S0A 3W0  
306.534.4700 Cell: 306.745.7431  
email: cuss@sasktel.net  
website: www.sunrisesimmentals.com

Welcome to the 12th annual Proudly Western Bull Sale. The Sun Rise herd has grown to where we are calving about 50 cows, including 10 embryo calves. Our Proudly Western offering consists of a red baldy son of Spark Plug out of 78U, our feature flush cow, two powerful bulls sired by 56U, including one out of the Agribition champion LFE 82A, a moderate framed, stout-made bull sired by Captain Morgan, and a blaze-faced, interesting three-quarter bull. 2018 is off to a great start at Sun Rise as we prepare to offer our top bulls to the industry, welcome the new calf crop and prepare to flush Springcreek Lima 69Y, our new donor cow recently purchased with Maxwell Simmentals from Springcreek.

Since we downsized our herd, we are enjoying spending more time with our grandsons. We're having fun camping, skiing, sharing the love of farming and hearing about goals being scored at the hockey rink. We are certainly enjoying this phase in our lives, since it's full of the two things we enjoy the most - our family and the purebred Simmental cattle business.

We would be happy to discuss our program and the cattle business in general with you.  
Evan & Linda



Evan & Linda, Kristin (Cuss), George, Braiden and Duncan



LOT 31



JTC 9B



JTC 8B



JTC 10C

PROGENY OF JTC 78U



SPRINGCREEK SPARK PLUG



SUN RISE BLACK 78U

31

## SUN RISE *Red* 14E

PTG1193477 JTC 14E JAN. 16, 2017 HOMO POLLED PUREBRED MALE

HOMO POLLED

- sired by the \$95,000 Spark Plug
- out of our top flush cow
- good testicles
- baldy face
- attractive profile

ANCHOR D VIPER 103W  
SPRINGCREEK SPARK PLUG  
SPRINGCREEK BROOKE 68Z

SPRINGCREEK LEVI 39S  
SUN RISE BLACK 78U  
SUN RISE BLACK 45R

DOUBLE BAR D MAESTRO 100S  
PRL LOPEZ 147L  
KOP CROSBY 137W  
SPRINGCREEK BROOKE 11W  
MSR KANSAS TANK 235M  
NEVAS L93  
RCC/TCF LINE DRIVE M181  
SUN RISE 35G

CE	BW	WW	YW	Milk	MCE	MWWT	BW	ADJ WW	ADJ YW
4.8	3.6	73.8	109.6	24.1	9.7	61.0	98 lbs.	772 lbs.	1418 lbs.





SPRINGCREEK LOTTO 52Y



SPRINGCREEK LINER 56U



LOT 32

32

**SUN RISE *Black* 23E**

BPG1194474 JTC 23E JAN. 24, 2017 HOMO POLLED PUREBRED MALE

HOMO POLLED HETERO BLACK

- sired by the popular 56U
- great performance
- good testicles
- mothered by one of our top producing cows

RCC/TCF LINE DRIVE M181  
**SPRINGCREEK LINER 56U**  
 NEVAS L93

SPRINGCREEK LOTTO 52Y  
**SUN RISE RED 68A**  
 SUN RISE RED 38U

HC POWER DRIVE 88H  
 BOZ SWEET TEMPTATION  
 TNT BLACK SHADOW J30  
 NEVAS BLACK FOOT H819  
 KOP CROSBY 137W  
 SPRINGCREEK BLK TESS 25T  
 WHEATLAND RED TEDDY 457P  
 SUN RISE RED 57N

CE	BW	WW	YW	Milk	MCE	MWWT	BW	ADJ WW	ADJ YW
0.6	6.2	84.3	127.4	21.6	12.4	63.8	105 lbs.	843 lbs.	1643 lbs.



LFE BS SHEILA 82A



SPRINGCREEK LINER 56U



LOT 33

33

**SUN RISE *Black* 31E**

BPTG1194499 JTC 31E JAN. 28, 2017 HOMO POLLED PUREBRED MALE

HOMO POLLED

- sired by the popular 56U
- dam is Agribition Grand Champion
- will sire very attractive daughters
- good testicles

RCC/TCF LINE DRIVE M181  
**SPRINGCREEK LINER 56U**  
 NEVAS L93

LFE THE DARK NIGHT 350U  
**LFE BS SHEILA 82A**  
 LFE BS SHEILA 136T

HC POWER DRIVE 88H  
 BOZ SWEET TEMPTATION  
 TNT BLACK SHADOW J30  
 NEVAS BLACK FOOT H819  
 R PLUS BLACKEDGE  
 LFE BS MS LEWIS 646R  
 LFE MR LEWIS 462P  
 LFE SHEILA 110K

CE	BW	WW	YW	Milk	MCE	MWWT	BW	ADJ WW	ADJ YW
6.2	4.7	78.6	120.6	22.8	13.0	62.1	97 lbs.	772 lbs.	1420 lbs.



LOT 35



CAPTAIN MORGAN 11Z



MATERNAL BROTHER JTC 40D

34

**SUN RISE Black 37E**

BPG1195476 JTC 37E FEB. 8, 2017 POLLED PUREBRED MALE

- waiting on Homo Polled test
- sired by the popular Captain Morgan
- very attractive profile
- thick butted
- good testicles

HARVIE JDF WALLBANGER111X  
SVS CAPTAIN MORGAN 11Z  
SUNNYVALLEY BLK JENNA 88U

SPRINGCREEK BLK TANK 99T  
**SUN RISE BLACK 77Z**  
SUN RISE BLACK 40W

SHS ENTICER P1B  
JDF PEPSI 61U  
RLA REDSTREAM 152S  
WLB 32H JENNA 360R  
SPRINGCREEK TANK 63P  
SPRINGCREEK BROOKE 12P  
SPRINGCREEK LEVI 39S  
SUN RISE BLACK 20R

CE	BW	WW	YW	Milk	MCE	MWWT	BW	ADJ WW	ADJ YW
6.1	3.5	65.3	94.9	24.6	10.5	57.3	95 lbs.	778 lbs.	1381 lbs.



LOT 35



SUNRISE BLACK 15C

35

**SUN RISE Black 7E**

BPRS1192582 JTC 7E JAN. 12, 2017 HOMO POLLED 75% PRESENTAGE MALE

HOMO POLLED HOMO BLACK

- very attractive profile
- blaze face
- good testicles
- 72 pound birth weight
- should work well in the heifer pen

SPRINGCREEK LINER 56U  
**SUN RISE BLACK 15C**  
DRAKE TULA 1R

RRAR FINAL ANSWER 9W  
**SUN RISE BLACK 33C**  
SUN RISE BLACK 67A

RCC/TCF LINE DRIVE M181  
NEVAS L93  
TCF/RCC TEMPTATION GJ640  
DCC 5N  
S A V FINAL ANSWER 0035  
MOWAT JAYBIRD 3N  
SPRINGCREEK HERITAGE 51X  
SUN RISE RED 12R

CE	BW	WW	YW	Milk	MCE	MWWT	BW	ADJ WW	ADJ YW
13.0	-1.7	61.3	95.6	23.6	10.8	54.3	72 lbs.	791 lbs.	1343 lbs.



**SWAN LAKE FARMS**

**GREG GOUDY**

Box 357, Stoughton, SK S0G 4T0  
306.457.2959

Greg: 306.457.7730 Brandon: 306.631.8818  
email: simmentalman@hotmail.com



Welcome to the 2018 edition of the Swan Lake Bull sale!

We transitioned from the Double Bar D Sale to the Proudly Western Sale and we welcome past and new customers to check out our tremendous set of bulls.

My son, Brandon, has taken a large interest in the purebred business and has been learning the ins and outs of showing cattle. Since he has been on the farm we have increased our herd by about 70 head. Throughout this growth, we are able to offer not only more numbers, but higher quality of easy doing bulls. Although we purebred guys sometimes chase the flavour of the month in new genetics, here at Swan Lake we strive to provide functional easy doing bulls that transmit that into your calves, that the feedlots demand and grade at the packers. We are starting to use more of our own genetics, as you see in Swan Lake Big Red, his calves are tremendous and the Johnson Stubby 322A bull who left a lasting impact on our herd. Bridgestone has also left his mark on our herd and his sons are stout meat machines and his females have nice udders and become powerful cows.

The fall bulls were fed a balanced TMR ration of corn silage, mixed alfalfa hay and pellets from CO-OP Feeds and the spring bulls were fed pellets and free choice hay.

The bulls have been on a full herd health program since birth and will have both shots of Fusogard for your convenience.

Each bull will be semen tested before the sale. Please check our website [www.swanlakefarms.com](http://www.swanlakefarms.com) DLMS, or T Bar C website for videos of each bull.

We would like to thank T Bar C for their help in this transition to the Proudly Western Sale. Also we would like to thank Double Bar D, Richard, Ken and Mark for the eight years of allowing us to sell bulls with them.

Thank you to everyone who has supported us through the years and would like to thank the buyers in advance for their purchases.

If you have any questions give me a call at 306-457-7730 or my son Brandon at 306-631-8818 or the T Bar crew.

We also reserve the right to collect semen on any bull being sold, for in herd use only.



**LOT 36**

**36**

**SWAN LAKE Dodge 82D**

**PG1178981 JVB 82D AUG. 10, 2016 POLLED PUREBRED MALE**

HOMO POLLED

- deep bodied
- easy fleshing
- big testicles
- top cow family
- moderate framed
- these stubby bulls are the kind of cattle that the commercial cattlemen want, feedlots demand and packers love

LFE BS LEWIS 322U  
**JHNS STUBBY 322A**  
JHNS MISS WHEAT 322Y

IPU RED SPECIALIST 70T  
**SWAN LAKE JACKLEN 98B**  
ANKONY MS JACQUELYN R132

R PLUS BLACKEDGE  
LFE BS MS ARNOLD 135S  
WHEATLAND BULL 634S  
KLC MISS RED FELIX 320N  
WHEATLAND RED TEDDY 457P  
IPU MS RED RIBEYE 201R  
BOZ REDCOAT  
GFI CANDACE G51

CE	BW	WW	YW	Milk	MCE	MWWT	BW	ADJ WW	ADJ YW
8.5	3.9	61.6	90.3	23.4	8.2	54.2	90 lbs.	918 lbs.	1647 lbs.



LOT 37

37

**SWAN LAKE** *Rapid Fire* 83D

PG1178982 JVB 83D AUG. 11, 2016 POLLED PUREBRED MALE

KWA FLYF RED MOUNTAIN 16Z  
**SWAN LAKE BIG RED 85 B**  
 SWAN LAKE LILI 115Z

SLF RED HUMMER 81U  
**SWAN LAKE CHLOE 93 B**  
 DRAKE CHLOE 14P

IPU RED WESTERN 49X  
 KWA MS ROCK 14X  
 LFE BLACK LAKOTA 385W  
 DOUBLE BAR D LILI 62R  
 WHEATLAND RED HUMMER 608S  
 RKTS MISS RED DOC 9K  
 TCF/RCC TEMPTATION GJ640  
 RRL ANNA 110H

CE	BW	WW	YW	Milk	MCE	MWWT	BW	ACT WW	ACT YW
7.6	3.2	68.2	102.6	23.5	6.4	57.6	85 lbs.	996 lbs.	1647 lbs.

- HOMO POLLED
- deep bodied
  - dark red
  - big top
  - off first calf heifer
  - Big Red prodigy are outstanding



LOT 38

38

**SWAN LAKE** *Shotgun* 88D

PG1178986 JVB 88D AUG. 21, 2016 POLLED PUREBRED MALE

- POLLED
- pen favorite
  - deep and wide
  - easy fleshing
  - calving ease bull

LFE BS LEWIS 322U  
**JHNS STUBBY 322A**  
 JHNS MISS WHEAT 322Y

KWA RED ROCK 5T  
**BLCC MISS RED ROCK 351Y**  
 BLCC MISS STING 38S

R PLUS BLACKEDGE  
 LFE BS MS ARNOLD 135S  
 WHEATLAND BULL 634S  
 KLC MISS RED FELIX 320N  
 DAY RED PEPPER DOC 984R  
 KWA MS ROCK 7P  
 TNT STING M377  
 BLCC MISS 2P

CE	BW	WW	YW	Milk	MCE	MWWT	BW	ACT WW	ACT YW
12.1	2.6	67.8	92.9	23.5	10.5	57.4	90 lbs.	1057 lbs.	1642 lbs.



JHNS STUBBY 322A

39

**SWAN LAKE 90D**

APPLIED FOR JVB 90D POLLED PUREBRED MALE

LFE BS LEWIS 322U  
**JHSN STUBBY 322A**  
 JHSN MISS WHEAT 322Y

LFE MR LEWIS 319N  
**MISS BDDL 102R**  
 MISS BDDL 102J

R PLUS BLACKEDGE  
 LFE BS MS ARNOLD 135S  
 WHEATLAND BULL 634S  
 KLC MISS RED FELIX 320N  
 BH BLACK EXPRESS 019K  
 LFE DAKOTA COAL 623H  
 SIR BDDL 91F  
 MISS BDDL 101F

CE	BW	WW	YW	Milk	MCE	MWWT	BW	ADJ WW	ADJYW
3.8	6.1	64.7	90.9	23.5	6.1	55.8	-	-	-

- POLLED
- dark red
  - dam is black
  - longevity in pedigree
  - good feet
  - deep bodied
  - larger framed bull



LOT 39

40

**SWAN LAKE *Manager* 94D**

PTG1197319 JVB 94D SEP. 25, 2016 POLLED PUREBRED MALE

WHEATLAND HIGHVOLTAGE122Y  
**WHEATLAND CIRCUIT BREAKER**  
 WHEATLAND LADY 81X

TNT TOP GUN R244  
**LRX MS 153U**  
 LRX MS CAESAR 62T

WHEATLAND PREDATOR 922W  
 WHEATLAND LADY 736 T  
 STF DOMINANCE T171  
 WHEATLAND LADY 902J  
 TNT GUNNER N208  
 TNT MISS SADIE M68  
 ANKONIAN RED CAESAR  
 DUSTY ROSE CHAMPAGNE 1N

CE	BW	WW	YW	Milk	MCE	MWWT	BW	ACT WW	ACT YW
7.0	2.7	59.9	90.4	23.1	10.1	53.0	85 lbs.	1050 lbs.	1600 lbs.

- POLLED
- deep
  - big top
  - dam is maybe the best red cow on the farm
  - females will be unreal good
  - ET Calf



LOT 40

41

**SWAN LAKE *Inforce* 101D**

PG1229387 JVB 101D OCT. 15, 2016 POLLED PUREBRED MALE

HOOKS SHEAR FORCE 38K  
**JHSN INFORCE 69A**  
 DOUBLE BAR D PANSY 136T

X-T RED TURBO 26Z  
**JHSN MISS TURBO 88C**  
 IPU MS RED TEDDY 88T

NICHOLS BLK DESTINY G151  
 C&D TRACY  
 BISS TOBY 818P  
 DOUBLE BAR D MS PRIME 99N  
 TWIN-CHIEF TURBO 41T  
 X-T MISS TABASCO 30T  
 WHEATLAND RED TEDDY 457P  
 IPU RED POCAHONTAS 46R

CE	BW	WW	YW	Milk	MCE	MWWT	BW	ADJ WW	ADJ YW
9.7	2.6	60.9	88.9	21.8	10.2	52.2	85 lbs.	-	-

- POLLED
- deep bodied
  - easy doing bull
  - smaller framed
  - dam has a perfect udder



LOT 41



**LOT 42**

42

**SWAN LAKE Bull 102D**

**PG1227676 JVB 102D OCT. 18, 2016 POLLED PUREBRED MALE**

HOMO POLLED

- meat and muscle
- big top and butt
- 66 cow family is one of the best I have
- pen favorite

WHEATLAND BULL 932W  
**PHEASANTDALE WHEATY 242Y**  
 PHEASANTDALE MS 50U

LFE BS LEWIS 322U  
**JHSN BLK ZANA 66B**  
 RHF BLK ZANA 66Z

WHEATLAND BULL 680S  
 ROCKY HILLS PICK  
 BDS MR BLK DIAMOND 38S  
 PHEASANTDALE MS 4S  
 R PLUS BLACKEDGE  
 LFE BS MS ARNOLD 135S  
 RHF MONTANA 7U  
 RHF BLACK WHITNEY 6W

CE	BW	WW	YW	Milk	MCE	MWWT	BW	ADJ WW	ACT YW
9.7	2.2	62.1	87.2	21.6	8.8	52.7	95 lbs.	770 lbs.	1500 lbs.



**LOT 43**

43

**SWAN LAKE Turbo 107D**

**PG1197454 JVB 107D OCT. 30, 2016 POLLED PUREBRED MALE**

TWIN-CHIEF TURBO 41T  
**X-T RED TURBO 26Z**  
 X-T MISS TABASCO 30T

SKORS CROCKET 63X  
**JHSN MISS CROCKET 74A**  
 WINDMILL MS DYNAMITE 74W

TNT SURVIVOR K220  
 TWIN-CHIEF NAKINE 104N  
 D BAR C REGENCY 23R  
 X-T MISS LOTTO 13R  
 LBR CROCKET R81  
 SKORS MS BAILEY 289T  
 BLCC MR DYNAMITE 2S  
 WINDMILL MS BLK ROONIK

CE	BW	WW	YW	Milk	MCE	MWWT	BW	ACT WW	ACT YW
3.5	5.3	74.6	117.9	23.7	9.4	61.0	95 lbs.	890 lbs.	1563 lbs.

POLLED

- dark red bull
- lots of hair
- performance bull
- deep bodied

44

**SWAN LAKE** *Inforce*

PG1227677 JVB 110D NOV. 1, 2016 POLLED PUREBRED MALE

HOOKS SHEAR FORCE 38K  
**JHNSN INFORCE 69A**  
 DOUBLE BAR D PANSY 136T  
 IPU ACCELERATOR 8Y  
**JHNSN MISS ACCELERATOR 16C**  
 BAR J POWERKITTEN 16N

NICHOLS BLK DESTINY G151  
 C&D TRACY  
 BISS TOBY 818P  
 DOUBLE BAR D MS PRIME 99N  
 TNT ACCELERATOR S226  
 MS RED TOUCHLESS 69U  
 PELTONS POWERCAT 344G  
 BAR J MARITA 27K

CE	BW	WW	YW	Milk	MCE	MWWT	BW	ADJ WW	ACT YW
11.2	2.0	66.2	93.0	20.9	9.5	53.9	85 lbs.	-	1250 lbs.

POLLED/SCURS  
 • calving ease bull  
 • smaller framed



LOT 44

45

**SWAN LAKE** *Wheaty* 111D

BPG1197495 JVB 111D NOV. 2, 2016 POLLED PUREBRED MALE

WHEATLAND BULL 932W  
**PHEASANTDALE WHEATY 242Y**  
 PHEASANTDALE MS 50U  
 SKORS CROCKET 63X  
**JHNSN PEPPERETTE 24Z**  
 RED PEPPERETTE

WHEATLAND BULL 680S  
 ROCKY HILLS PICK  
 BDS MR BLK DIAMOND 38S  
 PHEASANTDALE MS 4S  
 LBR CROCKET R81  
 SKORS MS BAILEY 289T  
 DUSTY ROSE CONQUEST 251M  
 MJ RED NONA 24M

CE	BW	WW	YW	Milk	MCE	MWWT	BW	ACT WW	ACT YW
6.3	3.0	64.7	99.9	22.7	10.6	55.1	93 lbs.	716 lbs.	1465 lbs.

POLLED  
 • deep bodied  
 • easy fleshing  
 • dam is a model cow  
 • perfect udder and teat placement



LOT 45

46

**SWAN LAKE** *Wheaty* 117D

PG1197511 JVB 117D NOV. 8, 2016 POLLED PUREBRED MALE

WHEATLAND BULL 932W  
**PHEASANTDALE WHEATY 242Y**  
 PHEASANTDALE MS 50U  
 IPU RED RIBEYE 68R  
**JHNSN BLACK CLAIR 111X**  
 TYMARC BLACK CLAIR 11P

WHEATLAND BULL 680S  
 ROCKY HILLS PICK  
 BDS MR BLK DIAMOND 38S  
 PHEASANTDALE MS 4S  
 R PLUS RED RIBEYE 1134L  
 DCR MISS TOMCAT  
 GW LUCKY DICE 187H  
 ULTRA PREFERRED CLAIR 8H

CE	BW	WW	YW	Milk	MCE	MWWT	BW	ADJ WW	ACT YW
8.7	2.4	72.5	108.2	21.5	10.7	57.8	91 lbs.	761 lbs.	1510 lbs.

POLLED  
 • dark red  
 • deep and wide  
 • these 242 sons are flat out awesome  
 • females have nice udders



LOT 46

47

**SWAN LAKE** *Wheaty* 123D

PG1197515 JVB 123D NOV. 12, 2016 POLLED PUREBRED MALE

WHEATLAND BULL 932W  
**PHEASANTDALE WHEATY 242Y**  
 PHEASANTDALE MS 50U  
 PRAIRIEWIND BLACKBERRY49S  
**FTS CHERRY COLA 703Y**  
 KUNTZ NANCY 648S

WHEATLAND BULL 680S  
 ROCKY HILLS PICK  
 BDS MR BLK DIAMOND 38S  
 PHEASANTDALE MS 4S  
 KWA LIMITED 71P  
 PRAIRIE WIND 76P  
 WHEATLAND'S INFERNO 325N  
 NUG SPECKLES 709G

CE	BW	WW	YW	Milk	MCE	MWWT	BW	ADJ WW	ADJ YW
6.5	3.5	63.9	89.3	26.1	11.5	58.1	95 lbs.	692 lbs.	1460 lbs.

POLLED/SCURS  
 • dark red  
 • lots of hair  
 • deep bodied  
 • dam has a perfect udder  
 • females will be awesome



LOT 47



LOT 48

48

SWAN LAKE *Turbo* 128D

PG1197520 JVB 128D NOV. 16, 2016 POLLED PUREBRED MALE

TWIN-CHIEF TURBO 41T  
**X-T RED TURBO 26Z**  
 X-T MISS TABASCO 30T

WHEATLAND BULL 634S  
**JHSN PASSION 956Y**  
 MRL MISS 956S

TNT SURVIVOR K220  
 TWIN-CHIEF NAKINE 104N  
 D BAR C REGENCY 23R  
 X-T MISS LOTTO 13R  
 REMINGTON RED LABEL HR  
 WHEATLAND LADY 902J  
 LFE MR LEWIS 409M  
 MRL MISS 413M

CE	BW	WW	YW	Milk	MCE	MWWT	BW	ADJ WW	ADJ YW
5.7	3.5	56.8	81.6	24.9	8.4	53.3	91 lbs.	642 lbs.	1412 lbs.

- POLLED
- dark red
  - pen favorite
  - dam is a very productive cow
  - Carson Bender bought last year's maternal brother



LOT 49

49

SWAN LAKE *Shake & Bake* 130D

PG1197522 JVB 130D NOV. 19, 2016 POLLED PUREBRED MALE

SPRINGCREEK LINER 56U  
**IPU BRIDGESTONE 299Y**  
 WINDMILL MS WHISLER 153R

GCF FIRST DREAM P13  
**SLF MISS SWAN 1T**  
 RKTS RED LADY 37R

RCC/TCF LINE DRIVE M181  
 NEVAS L93  
 LAZY S WHISTLER 523M  
 WINDMILL MS RICHY 43L  
 CNS DREAM ON L186  
 BH FIRST GLANCE 88H  
 RKTS WIDELOAD 47N  
 RKTS MISS DESTINY 5M

CE	BW	WW	YW	Milk	MCE	MWWT	BW	ADJ WW	ADJ YW
7.3	4.4	75.6	110.1	25.4	12.2	63.2	95 lbs.	686 lbs.	1352 lbs.

- POLLED
- meat and muscle bull
  - good leg and feet
  - easy doing
  - dam was one of the best black cows I had
  - females will be good
  - feedlots will love feeding his steers
  - a lot of potential in this bull



LOT 50

50

SWAN LAKE *Denali* 24E

PG1197450 JVB 24E JAN. 19, 2017 POLLED PUREBRED MALE

- HOMO POLLED
- dark red
  - deep bodied
  - calving ease
  - big time herd bull here
  - dam is the best cow family I have
  - dam raised the \$15,250 Caleb bull that Twin Brae Simmentals bought in 2016
  - Swan Lake Big Red really worked well
  - dam has nice square udder

KWA FLYF RED MOUNTAIN 16Z  
**SWAN LAKE BIG RED 85 B**  
 SWAN LAKE LILI 115Z

SLF RED HUMMER 81U  
**SWAN LAKE BECKY 39A**  
 LRX MS 153U

IPU RED WESTERN 49X  
 KWA MS ROCK 14X  
 LFE BLACK LAKOTA 385W  
 DOUBLE BAR D LILI 62R  
 WHEATLAND RED HUMMER 608S  
 RKTS MISS RED DOC 9K  
 TNT TOP GUN R244  
 LRX MS CEASAR 62T

CE	BW	WW	YW	Milk	MCE	MWWT	BW	ACJ WW	ACJ YW
10.3	1.7	74.7	113.9	28.1	10.2	65.5	85 lbs.	830 lbs.	1563 lbs.



DAM UDDER







SWAN LAKE BIG RED 85 B



LOT 51

51

**SWAN LAKE *Big Red* 25E**

PG1197451 JVB 25E JAN. 19, 2017 POLLED PUREBRED MALE

- Homo Polled test pending
- another top Big Red son
- deep
- big testicles
- easy doing bull
- lots of hair
- Red Hummer dam has been a good producer

KWA FLYF RED MOUNTAIN 16Z  
**SWAN LAKE BIG RED 85 B**  
 SWAN LAKE LILI 115Z

WHEATLAND RED HUMMER 608S  
**SWAN LAKE ANN 90Z**  
 SLF MISS SWAN 19U

IPU RED WESTERN 49X  
 KWA MS ROCK 14X  
 LFE BLACK LAKOTA 385W  
 DOUBLE BAR D LILI 62R  
 WHEATLAND BULL 468P  
 WHEATLAND LADY 443P  
 TNT ACCELERATOR S226  
 MISS SWAN 36R

CE	BW	WW	YW	Milk	MCE	MWWT	BW	ADJ WW	ADJ YW
7.7	4.1	74.3	104.0	22.6	4.8	59.8	99 lbs.	800 lbs.	1451 lbs.

52

**SWAN LAKE *Rattler***

PG1229379 JVB 55E FEB. 6, 2017 POLLED PUREBRED MALE

NCB COBRA 47Y  
**MAF RATTLER 23C**  
 MAF CASSADE 101A  
 NUG ROYAL RED 324A  
**MAF SHAMROCK 260C**  
 IPU MS. RED ESSENCE 19Z

LFE VIPER 455U  
 NCB MISS DREAM 22T  
 WHEATLAND BULL 680S  
 REMINGTON CASSADE 28T  
 LFE BLACK LAKOTA 385W  
 TRIPILE C SMARTY PANTS R  
 TNT ACCELERATOR S226  
 IPU MS RED TEDDY 66T

CE	BW	WW	YW	Milk	MCE	MWWT	BW	ADJ WW	ADJ YW
6.8	2.8	63.4	93.5	21.4	8.3	53.0	99 lbs.	-	-

- POLLED
- really deep soggy bull



LOT 52



53

**SWAN LAKE *Stubs* 84 D**

**BPG1178983 JVB 84D AUG. 12, 2016 POLLED PUREBRED MALE**

HOMO POLLED

- very deep bodied
- very easy fleshing
- great cow family backed by the \$47,000 Power Surge cow and the great Ramona cow
- the 322A sons are consistent in their makeup

LFE BS LEWIS 322U  
**JHNS STUBBY 322A**  
 JHNS MISS WHEAT 322Y

BLK FULL THROTTLE 483X  
**SWAN LAKE COTTONBALL 18A**  
 MRL MISS 390X

R PLUS BLACKEDGE  
 LFE BS MS ARNOLD 135S  
 WHEATLAND BULL 634S  
 KLC MISS RED FELIX 320N  
 WHEATLAND BULL 680S  
 CROSSROAD RAMONA 375R  
 TNT POWER SURGE T404  
 MRL MISS 332T

CE	BW	WW	YW	Milk	MCE	MWWT	BW	ACT WW	ACT YW
7.4	5.2	65.7	98.5	20.9	-1.0	53.8	80 lbs.	920 lbs.	1671 lbs.



54

**SWAN LAKE *Wheaty* 118D**

**BPG1197506 JVB 118D NOV. 8, 2016 POLLED PUREBRED MALE**

WHEATLAND BULL 932W  
**PHEASANTDALE WHEATY 242Y**  
 PHEASANTDALE MS 50U

TWIN BRAE TENNASEE  
**JHNS MISS TENNASEE 129X**  
 WINDMILL MS DOMINO 129P

WHEATLAND BULL 680S  
 ROCKY HILLS PICK  
 BDS MR BLK DIAMOND 38S  
 PHEASANTDALE MS 4S  
 RED BARON HR P101  
 CZAR MS LADY KAT 83H  
 SPRINGCREEK DOMINO 106L  
 WINDMILL MS BANDIT 52L

CE	BW	WW	YW	Milk	MCE	MWWT	BW	ADJ WW	ADJ YW
7.7	3.5	72.1	99.1	25.4	11.4	61.5	96 lbs.	758 lbs.	1681 lbs.

POLLED

- deep and easy doing
- dam has put bulls in Baumgartner's herd and at Drake Valley View Farms

55

**SWAN LAKE *Brite Spark* 119D**

**BPG1197507 JVB 119D NOV. 8, 2016 POLLED PUREBRED MALE**

LFE BS LEWIS 322U  
**RHF BLK BRITE SPARK 403A**  
 MARYWOOD BLK HEATHER 29X

IPU RED TEDDY 24U  
**JHNS MISS TEDDY 29X**  
 JHNS VIEW 29U

R PLUS BLACKEDGE  
 LFE BS MS ARNOLD 135S  
 DAUME LEGEND M081  
 MARYWOOD 39S HEATHER 29U  
 WHEATLAND RED TEDDY 457P  
 IPU RED POCAHONTAS 8S  
 ANKONIAN RED CAESAR  
 CREST'S VIEW 29S

CE	BW	WW	YW	Milk	MCE	MWWT	BW	ADJ WW	ADJ YW
7.0	3.4	66.3	98.4	19.8	6.0	53.0	95 lbs.	802 lbs.	1546 lbs.

POLLED

- big top and hip
- deep bodied
- dam has been a good producer



56

**SWAN LAKE *Brite Spark* 124D**

BPG1197516 JVB 124D NOV. 10, 2016 POLLED PUREBRED MALE

LFE BS LEWIS 322U  
**RHF BLK BRITE SPARK 403A**  
 MARYWOOD BLK HEATHER 29X

JHSN FIRESTONE 7W  
**JHSN MISS FIRESTONE 142Y**  
 JHSN MISS RIBEYE 140X

R PLUS BLACKEDGE  
 LFE BS MS ARNOLD 135S  
 DAUME LEGEND M081  
 MARYWOOD 39S HEATHER 29U  
 SS GOLD MINE L42  
 CW MS TERESA 7T  
 IPU RED RIBEYE 68R  
 CVR DYNAMIC 140P

CE	BW	WW	YW	Milk	MCE	MWWT	BW	ADJ WW	ADJ YW
6.7	3.7	67.8	97.4	17.3	6.0	51.2	96 lbs.	666 lbs.	1250 lbs.

- long spined
- good footed
- dam has a nice square udder
- ample muscle shape



LOT 56

57

**SWAN LAKE *Brite Spark* 125D**

BPG1197517 JVB 125D NOV. 15, 2016 POLLED PUREBRED MALE

LFE BS LEWIS 322U  
**RHF BLK BRITE SPARK 403A**  
 MARYWOOD BLK HEATHER 29X

WHEATLAND BULL 634S  
**JHSN MISS WHEAT 322Y**  
 KLC MISS RED FELIX 320N

R PLUS BLACKEDGE  
 LFE BS MS ARNOLD 135S  
 DAUME LEGEND M081  
 MARYWOOD 39S HEATHER 29U  
 REMINGTON RED LABEL HR  
 WHEATLAND LADY 902J  
 LITTLE GUNS FELIX  
 PATT POL FLASHINGRED 8F

CE	BW	WW	YW	Milk	MCE	MWWT	BW	ADJ WW	ADJ YW
7.9	2.7	66.4	94.9	23.9	6.0	57.1	90 lbs.	717 lbs.	1306 lbs.

- POLLED
- deep
  - easy doing
  - dam produced the 322A bull that has sons leading off the sale



LOT 57

58

**SWAN LAKE *Brite Spark* 127D**

BPG1197519 JVB 127D NOV. 16, 2016 POLLED PUREBRED MALE

LFE BS LEWIS 322U  
**RHF BLK BRITE SPARK 403A**  
 MARYWOOD BLK HEATHER 29X

RHF MONTANA 7U  
**RHF BLK ZANA 66Z**  
 RHF BLACK WHITNEY 6W

R PLUS BLACKEDGE  
 LFE BS MS ARNOLD 135S  
 DAUME LEGEND M081  
 MARYWOOD 39S HEATHER 29U  
 CG MONTANA 29M  
 VGRP VENTURE'S DESTINY  
 TAYLORS BLACK JOURNEY  
 REHORST RHF 6K

CE	BW	WW	YW	Milk	MCE	MWWT	BW	ADJ WW	ADJ YW
7.2	3.0	65.0	96.3	21.6	5.0	54.1	99 lbs.	687 lbs.	1244 lbs.

- POLLED
- deep bodied
  - again out of the 66 cow family
  - calves are good off this cow



LOT 58

59

**SWAN LAKE *Brite Spark* 129D**

BPG1197513 JVB 129D NOV. 9, 2016 POLLED PUREBRED MALE

LFE BS LEWIS 322U  
**RHF BLK BRITE SPARK 403A**  
 MARYWOOD BLK HEATHER 29X

WHEATLAND BULL 634S  
**JHSN SIERRA 13Y**  
 WINDMILL MS LINER 13T

R PLUS BLACKEDGE  
 LFE BS MS ARNOLD 135S  
 DAUME LEGEND M081  
 MARYWOOD 39S HEATHER 29U  
 REMINGTON RED LABEL HR  
 WHEATLAND LADY 902J  
 SPRINGCREEK LINER 91P  
 WINDMILL MS RIDGEWAY 17J

CE	BW	WW	YW	Milk	MCE	MWWT	BW	ADJ WW	ACT YW
8.5	2.2	60.6	87.5	21.6	7.5	51.9	92 lbs.	627 lbs.	1474 lbs.

- POLLED HETERO BLACK
- dam is a power cow
  - deep
  - maternal brother at McDade Farms Ltd. and Gord White's



LOT 59



LOT 60

60

**SWAN LAKE Stone 23E**

BPG1197449 JVB 23E JAN. 18, 2017 POLLED PUREBRED MALE

- Homo Polled test pending
- deep
- long spined
- performance bull
- dam is one of the best black cows I have
- calves will pound the scales down
- excellent carcass traits
- females will be awesome
- good footed
- pen favorite
- API in the top 4%
- TI in the top 1%
- better than picture

SPRINGCREEK LINER 56U  
**IPU BRIDGESTONE 299Y**  
 WINDMILL MS WHISLER 153R

HOOKS SHEAR FORCE 38K  
**MAJESTIC MISS CANDACE 6Z**  
 ANKONY MISS CANDACE U056

RCC/TCF LINE DRIVE M181  
 NEVAS L93  
 LAZY S WHISTLER 523M  
 WINDMILL MS RICHY 43L  
 NICHOLS BLK DESTINY G151  
 C&D TRACY  
 STF MONTANA BLACK KF25  
 ANKONY MISS CANDACE P6

CE	BW	WW	YW	Milk	MCE	MWWT	BW	ADJ WW	ADJ YW
5.5	4.8	84.2	123.4	31.9	9.9	74.0	103 lbs.	894 lbs.	1660 lbs.



LOT 61

61

**SWAN LAKE Phantom 32E**

BPG1197724 JVB 32E JAN. 21, 2017 POLLED PUREBRED MALE

SPRINGCREEK LINER 56U  
**IPU BRIDGESTONE 299Y**  
 WINDMILL MS WHISLER 153R

ACS RED LITE 832U  
**SLF MISS SWAN 75X**  
 DOUBLE BAR D LADY 221T

RCC/TCF LINE DRIVE M181  
 NEVAS L93  
 LAZY S WHISTLER 523M  
 WINDMILL MS RICHY 43L  
 WHEATLAND RED TEDDY 457P  
 HAAS RANCH G217  
 CG REWARD 88R  
 DOUBLE BAR D LADY 125L

CE	BW	WW	YW	Milk	MCE	MWWT	BW	ADJ WW	ADJ YW
6.2	3.0	66.5	96.1	28.9	11.9	62.2	92 lbs.	795 lbs	1424 lbs.

- POLLED
- money stripe
  - big top, big hip
  - deep
  - lots of hair
  - dam is a real producer

62

**SWAN LAKE** *Chuck*

**BPG1207862 JVB 66E FEB. 11, 2017 POLLED PUREBRED MALE**

ERIXON REVELSTOCK 41A  
**BERTS CHUCK 3C**  
 SWAN LAKE NOREMAC 75Y

WHEATLAND BULL 680S  
**JHSN TERESA 70Y**  
 CW MS TERESA 7T

HARVIE JDF WALLBANGER111X  
 ERIXON LADY 10U  
 LFE BLACK LAKOTA 385W  
 MISS RED NOREMAC 41T  
 WHEATLAND BULL 131L  
 WHEATLAND LADY 351N  
 PVF-BF BF26 BLACK JOKER  
 CW MS ROXANNE 3R

CE	BW	WW	YW	Milk	MCE	MWWT	BW	ACT WW	ADJ YW
3.0	4.3	74.7	124.5	22.2	5.2	59.6	102 lbs.	847 lbs.	-

- POLLED
- deep
  - easy doing bull
  - great pedigree



LOT 61

63

**SWAN LAKE** *Ethan*

**BPG1226400 JVB 67E FEB. 11, 2017 POLLED PUREBRED MALE**

WHEATLAND BULL 932W  
**PHEASANTDALE WHEATY 242Y**  
 PHEASANTDALE MS 50U

WLB OBSIDIAN BLACK 391Y  
**DOUBLE BAR D GINA 508B**  
 DOUBLE BAR D GINA 18U

WHEATLAND BULL 680S  
 ROCKY HILLS PICK  
 BDS MR BLK DIAMOND 38S  
 PHEASANTDALE MS 4S  
 HART GOOD TIME W223  
 WLB 462P LUCY 400W  
 WHEATLAND RED HUMMER 608S  
 DOUBLE BAR D GINA 196S

CE	BW	WW	YW	Milk	MCE	MWWT	BW	ACT WW	ADJ YW
7.8	2.3	66.0	95.8	22.1	13.3	55.0	95 lbs.	795 lbs.	-

- POLLED
- well balanced bull
  - easy doing bull
  - these 242 sons are flat out good



LOT 63

64

**SWAN LAKE** *Doogy*

**BPG1207872 JVB 88E APR. 16, 2017 POLLED PUREBRED MALE**

LFE BS LEWIS 322U  
**JHSN STUBBY 322A**  
 JHSN MISS WHEAT 322Y  
 WHEATLAND RED HUMMER 608S  
**SLF MISS SWAN 101X**  
 SLF MISS SWAN 49T

R PLUS BLACKEDGE  
 LFE BS MS ARNOLD 135S  
 WHEATLAND BULL 634S  
 KLC MISS RED FELIX 320N  
 WHEATLAND BULL 468P  
 WHEATLAND LADY 443P  
 KWA BLACK PREMIUM 41R  
 HILLCREST MISS LORNA 41L

CE	BW	WW	YW	Milk	MCE	MWWT	BW	ACT WW	ACT YW
5.8	6.2	69.1	98.3	18.3	6.6	52.9	99 lbs.	550 lbs.	1170 lbs.

- POLLED
- only a mid April calf
  - big top
  - big hip
  - loads of hair
  - super soggy
  - females will be awesome
  - steers will pound the scales down



LOT 64

*Notes:*

---

---

---

---

---

---

---

---

---

---

---

---

---

---

---

---

---

---

---

---

---

---

---

---



## *Thank you to the 2017 bull sale buyers...*

Diamond B Simmentals  
Grinalta Farms  
Downey Farms  
Clifford Land & Cattle  
Aaron Gurney  
Drake Valley View Farms  
HJD Farms  
Berglund LS  
Blair Wilson

Lorne Benson  
Debenham Cattle Co.  
Randy Sawley  
Dale McAuley  
Robert Byers  
LD Stock Farms  
Piwarski Land & Cattle  
Wade Jooristy  
Dwayne Burbach

Calico Cattle Co.  
Pleasant Vista Farms Ltd.  
Chris MacPherson  
Lee Boardman  
Allan Schaeffer  
Darryn Beutler  
JK Cattle Co.  
Dean Armstrong  
Allen Boutin

## **TERMS & CONDITIONS...**

### **TERMS...**

The terms of the sale are cash or cheque, payable at par at the sale location. The right of property shall not pass until after settlement has been made; no invoicing on buyers in attendance, unless previous arrangements have been made. Every animal sells to the highest bidder and in cases of disputes, the auctioneer's decision will be final. Current exchange rates will be announced sale day. All monies are in Canadian funds.

### **BIDDING...**

Each animal will sell to the highest bidder...no by-bidding will be permitted. Disputes - Bidding will be reopened between the parties involved in dispute. If no further bidding is made, the buyer will be the person from whom the auctioneer accepted the last bid. The auctioneer's decision on all disputes will be final.

### **ANNOUNCEMENTS...**

All announcements made from the auction block will take precedence over the printed matter in the catalogue. Buyers are therefore cautioned to pay close attention to such disclosures.

### **BREEDER'S GUARANTEE...**

All bulls sold are guaranteed breeders by the owners. We guarantee to provide you with a sound breeding bull. Should any bull fail to be an unsatisfactory breeder, he will be replaced with a bull of equal value or a credit will be given toward the purchase of another bull. If you have a problem with your bull please notify us immediately. Under no circumstances will the seller be liable for more than the purchase price of the animal.

### **EXCEPTION GUARANTEE...**

In cases where the animal is subjected to any hormonal or surgical reproduction techniques after the sale, this guarantee shall be null and void.

### **CERTIFICATE OF REGISTRATION...**

Each animal will carry papers issued by the Canadian Simmental Association. A certificate of registry duly transferred will be furnished to the buyer for each animal after payment has been made.

### **LIABILITIES...**

All persons attend the sale at their own risk. The seller, facility owner and sale manager assume no liability, legal or otherwise, for any accidents that occur. It is understood that T Bar C Cattle Co. Ltd. is acting only as a medium between buyer and seller and is not responsible for any failure on the part of either party to live up to his obligations. Neither does T Bar C Cattle Co. Ltd. assume any financial obligations to collect or enforce collection of any monies between parties and any legal action that may in exceptional cases be taken must be between the buyer and the seller. T Bar C Cattle Co. Ltd. assumes no responsibility for any credit extended by the seller to the buyer. The buyer must look to the seller for fulfillment of all guarantees and representations made hereunder.

### **RIGHTS AND OBLIGATIONS...**

The above terms and conditions of the sale shall constitute a contract between the buyer and seller and be equally binding to both. Resale of animals following purchase in this sale shall constitute a separate transaction and the rights and obligations of the two parties connected thereto are not covered by the terms and conditions of this sale.

### **PHONE, MAIL, WIRE BIDS...**

Bidders unable to attend the sale may phone, mail or wire their bids and instructions to the sale managers, auctioneer or special representatives. Bids must be received in sufficient time prior to the sale.

### **DELIVERY...**

We will assist in arranging transportation wherever possible. Each animal becomes the risk of the purchaser as soon as sold. \$100 rebate on bulls taken home sale day. Bull must be insured by buyer.

### **INSURANCE...**

Will be available sale day. We strongly recommend that insurance is purchased for full value.

### **ERRORS...**

All announcements at sale time, written or oral, supercede any written material in the catalogue. The seller reserves the right to draw semen from any bull in the sale for in-herd use only. The collection will be at the purchaser's convenience and the seller's expense.

**Return Undeliverable  
Canadian Addresses To:**

T Bar C Cattle Company  
Box 2330  
Warman, SK S0K 4S0



Created by Today's Publishing