

**TWELFTH ANNUAL**  
**BLUE COLLAR**  
**BULL SALE**



**Saturday, April 14, 2018**  
**Heartland Livestock**  
**Yorkton, SK 1:00 PM**

# WELCOME

It's mid March and the temperature has finally let up and that's been a great relief to everyone across Western Canada. Spring has sprung!

The good news is the good cattle just keep on thriving and keep money in your pocket where it belongs! The Blue Collar Bull Sale has a great lineup of genetics that will keep your business profitable. Long, thick bodied bulls with extra performance that will compete with the continental cattle, yet leave you those great Angus females we've all come to expect. Need some bulls that will give you a calving season that is easy, the light birth weight bulls will leave you a good set of calves with vigor. A top set of genetics that have been well accepted and responsible for many repeat buyers!

Join us Friday afternoon for a preview of the sale offering and some Blue Collar hospitality. Sale time is 1 p.m. Saturday, if have any questions regarding the offering feel welcome to call the consignors, sales staff or myself and we'd be happy to answer any questions.

See you sale day!

Shane Castle  
Castlerock Marketing

## SALE MANAGEMENT CASTLEROCK MARKETING

Shane Castle  
Cell: 306.741.7485  
Email: [castlerock.mktg@sasktel.net](mailto:castlerock.mktg@sasktel.net)  
Dean McAvoy 306-784-2241



Northern View Angus



Parkwood Farm



Swan Hills Ranch

## Watch and Bid Online

Can't make it to the sale?  
**Internet Bidding Available.**

To view this sale visit [www.dlms.ca](http://www.dlms.ca), Fill out the registration form located under registration and sign-up for your free user account and select a username and password.

**BIDDERS** - To be approved as a bidder, Log in to [dlms.ca](http://dlms.ca) and click BUYER APPROVAL tab, select the sale you are interested in bidding at and click sign up.

For more information  
Call DLMS Reps:

Whitney Bosovich 780.991-3025

Mark Shologan 780.699.5082

**DLMS**  
[www.dlms.ca](http://www.dlms.ca)

# BLUE COLLAR BULL SALE

Saturday, April 14, 2018

Heartland Livestock, Yorkton, SK • 1:00 P.M.

## SALE DAY PHONES

Shane: 306-741-7485  
Troy: 306-728-8911  
Scott B: 306-621-3638  
Scott T: 204-734-0210  
Heartland: 306-783-9437 • 306-786-3634

## CONSIGNORS

### NORTHERN VIEW ANGUS

Box 211, Neudorf, SK S0A 2T0  
Troy, Amy, Bret, Alexis & Talon Frick  
306-728-3515 • Cell 306-728-8911  
Alvin & Marlene Frick: 306-728-3295  
northernviewangus@imagewireless.ca

### PARKWOOD FARM

Box 48, RR 1, Yorkton, SK S3N 2V3  
Jack & Joyce 306-782-7112  
Scott, Mandy, Katie, Landon & Macy Burkell  
306-783-7986 • Cell 306-621-3638  
s.a.burkell@sasktel.net

### SWAN HILLS RANCH

Box 2471, Swan River, MB R0L 1Z0  
Scott, Cindy, Martina, Robyn & Parker Tibble  
Cell 204-734-0210  
Ranch 204-539-2570  
stibblemail@gmail.com

### View the Catalogue Online at:

[www.buyagro.com](http://www.buyagro.com)  
[www.castlerockmarketing.com](http://www.castlerockmarketing.com)

### View the Sale Bull Videos Online at: [www.cattlevids.ca](http://www.cattlevids.ca)

Find us on Facebook



April 14, 2018

**OFFERING:**  
61 BLACK ANGUS BULLS  
2 ANGUS INFLUENCE BULLS  
16 ANGUS INFLUENCE FEMALES

**View the bulls Friday, April 13  
from 6:30-8:00 PM  
Saturday, April 14  
Lunch at 11:00 AM  
SALE TIME 1:00 PM**

### Auctioneer:

Clayton Hawryluk, Heartland.....306-783-9437  
.....306-621-3824

### Blockman:

Shane Castle.....306-741-7485

### Ringmen:

Harvey Exner.....306-621-5486  
Hugh Elliot.....306-230-7805  
Brad Knutson .....306-595-4454 or 306-549-7637  
Levi Hall.....306-641-6271  
Kyle Prokopetz.....306-621-9391

### Hotel Accommodations:

Days Inn, Yorkton.....306-783-3297

### Livestock Insurance:

Farrell Agencies.....306-783-4477

### DLMS:

Whitney Bosovich.....780-991-3025

### Green Tag Program:

Canadian Angus Association.....403-571-3580

### Blue Collar Herd Person:

Kevin Clelland.....204-281-0961

We would like to thank the  
following sponsors...

### Blair's Ag

\$150 Sponsorship  
to the pre sale meal.

### Double R Autobody

\$75 Sponsorship  
to the post sale meal.

# WELCOME TO THE BLUE COLLAR BULL SALE

Welcome to the 12th Annual Blue Collar Bull Sale. We hope that all has gone well for you and your family in the past twelve months.

This time of year offers the excitement of bull sale season, the new crop of calves from new and proven sires and the anticipation of the upcoming breeding season. Our January was relatively nice weather for calving and February presented its challenges weather wise. March has started off as a lamb, but the lion quickly emerged. March 5, 6 and 7 saw us get upwards of two feet of snow. While this large dump of snow created its challenges but truly no one complained. The moisture was welcomed to fill dugouts and hopefully get our pasture and forage off to a good start. Our snow covering is ok but much more moisture will be required as we have come off the driest summer on record in our part of the world. However, we were fortunate enough to have hard grass which helped produce some of our highest weaning weights and adequate and nutritional forages.

Agriculture continues to be a rewarding and fulfilling occupation but it is also frustrating and uncertain. As always world markets, weather, political climates, labour and transportation are things that we cannot control.

However, we are able to control what we do at home. When it comes to cattle, we can control our herd health programming, nutrition we provide for our cattle and the direction we want our breeding programs to go.

Each of our operations are based on years of selective breeding and engagement in the family farm. When we started this sale in 2006 we all had very young families. Over time our children have all grown up with cattle right in front of them. Truly they had very little option but to be involved in processing cattle, sorting, daily chores, showing, preparing and fitting cattle and the breeding process. It has been really neat to watch all our children grow with us in the cattle business. They have gone from reluctant participants to cattle enthusiasts. The kids all have their own cattle, select the direction they want to breed them and how they want to market their cattle. Scanning sale and semen catalogues for new genetics with your children and learning about the genetics, epds, etc. that are out there with your children is extremely fulfilling. Our children take a great deal of pride in what they do. You will notice some of their calves are on offer to you here this year.

The direction you want your breeding program to go is something we believe that the Blue Collar Sale can help you with. We believe we are like a one stop shopping store. We have a variety of sire groups represented, new and proven sires. There are calving ease and power bulls. In all cases the bulls and females come from proven and consistent sire groups and proven feminine and productive Angus cow families. We have really worked on creating excellence and consistency in our cow herd. However, this is a job we are never quite satisfied with and continue to be driven to improve.

Our cow herds are built on years of careful selection and culling for fertility, structure and performance. We all have extensive AI and/or embryo programs. Each of us research and plan our breeding programs to strive to improve our own herds but also to provide you with the best possible genetics we can in order to present you with, "affordable, honest, hardworking cattle that'll get'er done."

Throughout the catalogue you will find an entire host of information to aid you in your bull or heifer selection. There are footnotes, pictures, pedigrees, weights, sire and dam information. Please feel free to contact any one of us for more information or stop by our farms to view the bulls prior to the sale.

The Blue Collar Bull Sale Group would like to thank the following for their contribution to the success of our sale:

- Everyone who attended last year's sale, our bidders and buyers.
- All our friends and family who helped us before, during and after the sale.
- All our sponsors. We do business with all of them and recommend you give them a try too.
- To Castlerock Marketing, Brad Knutson, Hugh Elliot, Levi Hall and Kyle Procopetz, the Heartland staff and all our friends for their work on our sale.

We believe that we have a solid and supportive team who can work to make sure that you are well taken care of and your livestock needs are met. Please contact any member of the Blue Collar Group or the sales staff with any questions to help you select the animals to meet your needs. Once again we are going to start our sale with groups of 3 or 5 commercial heifers. Many of these heifers come from bulls that have been purchased from the Bull Collar consignors. Look to increase the productivity of your cow herd with these quality genetics.

We would also like to make you aware that Farrell Agencies will be on hand sale day to assist you with the insurance of your purchases. As breeders we will support you, the buyer, in every way we can to ensure our cattle work, however, there are unforeseen events which occur, like illness, injury, or death, which the buyer and seller cannot control or guarantee. For situations like this there is insurance. We strongly recommend you insure all your livestock purchases but want you to insure any cattle which will be going home to our respective farms for a while. Please refer to the back of the catalogue for all sale conditions.

We take pride in the fact that we have an increased number of repeat customers. We truly enjoy the connections and socialization which is involved with our customers and the cattle business. We would like to invite you to give us a call or drop in for a visit any time.

We would like to welcome you to the 12th Annual Blue Collar Bull Sale. Cattle will be arriving at Heartland Thursday and may be viewed anytime until sale time. Consider this your invitation to come to Heartland in Yorkton on Friday, April 13th from 6:30-8:00 PM for a viewing of the cattle and fellowship and to the sale on Saturday, April 14th at 11:00 AM for lunch and to view the cattle and for the sale at 1:00 PM.

See at the Sale,  
Blue Collar Sale Group

# NORTHERN VIEW ANGUS

You will notice our cows have done a super job raising these bulls to weaning. Our moisture was tight all year and our female cow factory really proved their worth with our highest weaning weights ever. The hard, nutrient filled grass had a definite impact too.

We have really worked on not pushing our bulls. Feeding them a ration of 1.5% of their body weight in grain/ supplement and the balance of their ration with brome, timothy, orchard grass and millet hay. We have worked really hard to monitor the feed intake of our bulls to ensure no overfeeding and to promote a sound, growing bull that will work for you for the long term. They have free choice mega lix tubs to promote scrotal development, semen quality and structural soundness. The bulls are raised in large pens and/or pasture areas to allow for ample room to wander, rumble and explore. We have a diverse line up of genetics for you this year, with a variety of trusted and proven sires like Unanimous, Final Answer and Upward but have added Pulse, Resource and Pedigree to the battery of yearlings available for you. These yearlings are backed by strong cow families which we have been working at developing for a number of years now. Our female factory is one we are quite proud off. These bulls all have great cows in their pedigrees.

I have catalogued our bulls in sire groups and in numerical order of when they were born within that group. For example, in the first sire group of SAV Resource. The oldest bull is first and the youngest bull is last of that sire group. We have entered larger sire groups this year in hopes that you will have a better representation of what each sire is able to do.

**The quality of our bulls is equal from Lot 1 to Lot 26. Bulls are not listed in any order of quality. Carefully examine each lot.**

**We are retaining a 1/3 semen interest in all our bulls unless otherwise stated. This does not impact you owning the bull, the rights to walk the bull or the salvage value on the bull. All it means is that if, at some point, we would like to draw semen for in herd use we would arrange at your convenience and our expense to do so.**



Alexis Grad 2017  
with Zara Lisa 83D



Twila  
with Missie 89C



Agribition  
Preparations



Talon with Jet

Thanks to Bieber Trucking,  
Duff and Mark's Agency,  
Melville for purchasing  
Talon's steer Jet.

Thanks to Century Glass,  
Bryon, Raelene, Avery  
and Jenaye Priebe  
for purchasing  
Alexis's steer Kenny.



AJ with 4H Steer Kenny with Ken Bell

April 14, 2018

# NORTHERN VIEW... SAV Resource 1441



Top 1% for yearling weight and weaning weight. We used Resource for the shape, muscle and thickness he would provide. He is known as a foot and udder improver throughout the breed. With over 1500 progeny registered in Canada, alone he has been tested over and over again. We have three females working in our herd as of this spring. They each are deep, powerful and broody females with excellent udders. Their calves are doing great. The bulls are thick, shapely and powerful.

## Lot 1



## Northern View Resort 76E

Lot 1 1975250 FTA 76E 02/01/2017 Male

This bull has a real herd bull presence. A power bull with weaning and yearling weights in the top 2% of the breed. He has demonstrated a real ability to gain weight and grow. His masculinity is really something to admire. Good bulls have good mothers. Resort 76E is no exception. His dam, Laura 113Z is an angular, attractive female with a good udder and good feet. I believe this bull will add thickness and muscle to his calves. He has great shape and muscle to him. Dion Weibe of Roblin, MB, purchased Laura 113Z's Blue Collar offering in 2016.

EPD	BW	WW	YW	Milk	TM
4.0	61	107	18	51	
ACC	BW	Adj. 205	Adj. 365		
90	997	1492			

RITO 707 OF IDEAL 3407 7075  
**SAV RESOURCE 1441 1707295**  
 SAV BLACKCAP MAY 4136  
 WILLOWVIEW PIONEER 6X  
**NORTHERN VIEW LAURA 113Z 1675563**  
 CRESCENT CREEK LAURA 10U

R R RITO 707  
 IDEAL 3407 OF 1418 076  
 SAV 8180 TRAVELER 004  
 SAV MAY 2397  
 SAV PIONEER 7301  
 WILLOWVIEW GRAND JUNE 36P  
 MINBURN MAIN EVENT 82R  
 RON'S LAURA 16F

## Northern View Resort 105E

Lot 2 1975239 FTA 105E 16/01/2017 Male

Here is a moderate bull in terms of size, weights and numbers. Resort 105E is a very shapely and eye appealing bull that demands each producer's attention when they are in the pen. He is smooth made yet thick. His calving numbers are respectable and make him a candidate for calving ease. Resort 105E's dam has produced well for us. She has had all six of her calves become breeding stock. We have her daughter 121D, working in our herd. She has calved out already and is doing a fantastic job with her new calf.

EPD	BW	WW	YW	Milk	TM
1.6	42	86	21	40	
ACC	BW	Adj. 205	Adj. 365		
82	811	1255			

## Lot 2



RITO 707 OF IDEAL 3407 7075  
**SAV RESOURCE 1441 1707295**  
 SAV BLACKCAP MAY 4136  
 NORTHERN VIEW QUANTUM 86P  
**NORTHERN VIEW TIBBIE 105X 1552568**  
 NORTHERN VIEW TIBBIE 83T

R R RITO 707  
 IDEAL 3407 OF 1418 076  
 SAV 8180 TRAVELER 004  
 SAV MAY 2397  
 GDAR QUANTUM 963  
 CRESCENT CREEK BLACKBIRD 21J  
 NORTHERN VIEW FLYING ELIXIR70M  
 CRESCENT CREEK BEAUTY 118E



## S A V Final Answer 0035

Final Answer has nearly 4000 progeny registered in Canada. He is an elite sire in Canada since 2016 and has 30 daughters that are elite in Canada. The longevity of Final Answer is second to none as he bred until he was 14 years old. The calving ease coupled with explosive growth has made Final Answer a breed legend. We have had three daughters in our herd and they have been awesome. One is the dam to the Grand Slam 80C bull, the sire of Lots 15, 16 and 17.

### Lot 3



## Northern View Slick 77E

Lot 3    1975213    FTA 77E    03/01/2017    Male

This is a very deep sided and long bull. His dam is a Lucy Heritage female who has been doing well for us. Slick 77E has a great hair coat, good disposition, excellent structural make up and more than adequate scrotal development. This bull's birth weight numbers would mark him as one that would work on heifers. A maternal sister sold to Sunny Grove Angus in the 2016 Blue Collar Sale.

**Recommended for heifers.**

EPD	BW	WW	YW	Milk	TM
0.4	46	90	23	48	

ACC	BW	Adj. 205	Adj. 365
	76	857	1323

SITZ TRAVELER 8180  
**S A V FINAL ANSWER 0035 1061938**  
 S A V EMULOUS 8145  
  
 S A V HERITAGE 6295  
**NORTHERN VIEW LUCY 74Z 1675531**  
 NORTHERN VIEW LUCY 83R

G D A R TRAVELER 71  
 SITZ EVERELDA ENTENSE 1137  
 BON VIEW BANDO 598  
 S A V SKY EMULOUS 2124  
 CAR DUKE 104  
 S A V BLACKCAP MAY 4136  
 NORTHERN VIEW FLYING ELIXIR70M  
 NORTHERN VIEW LUCY 72J

## Northern View Vitality 90E

Lot 4    1975226    FTA 90E    11/01/2017    Male

Final Answer by Special Focus can't make anything else but a calving ease bull. This bull has very nice shape and design. The kids call this bull Ronald. They go up to him and pet him and scratch him all the time. His Missie X Special Focus dam has incredible temperament. She will come up to you and look for a scratch or a rub. These are very manageable cattle. Vitality 90E has very respectable weaning and yearling weights. Look for Vitality to calve easy and product quiet and functional cattle.

**Recommended for heifers.**

### Lot 4



EPD	BW	WW	YW	Milk	TM
-0.3	53	85	22	47	

ACC	BW	Adj. 205	Adj. 365
	75	873	1310

SITZ TRAVELER 8180  
**S A V FINAL ANSWER 0035 1061938**  
 S A V EMULOUS 8145

B P F SPECIAL FOCUS 504  
**NORTHERN VIEW MISSIE 89C 1852047**  
 NORTHERN VIEW MISSIE 81X

G D A R TRAVELER 71  
 SITZ EVERELDA ENTENSE 1137  
 BON VIEW BANDO 598  
 S A V SKY EMULOUS 2124  
 MYTTY IN FOCUS  
 B P F BLACK CASH 341  
 REMITALL H RACHIS 21R  
 NORTHERN VIEW MISSIE 84M

# NORTHERN VIEW... Mohnen South Dakota 402



We used South Dakota as a performance sire. He has tremendous width and length of spine. The depth of quarter and body are qualities admired in South Dakota. He is in the top 5% of the breed in weaning weights, yearling weights and total maternal qualities. A bull with excellent temperament. The bulls and heifers we have exhibit the qualities we were hoping for by using South Dakota.



Lot 5

## Northern View Achiever 89E

Lot 5      1975224      FTA 89E      10/01/2017      Male

MOHNEN DENSITY 730  
**MOHNEN SOUTH DAKOTA 402 1727672**  
MOHNEN JILT 539

NORTHERN VIEW NET WORTH 104Y  
**NORTHERN VIEW BELLE 107B 1795884**  
WWF AMBUSH BELLE 166P

S A V 004 DENSITY 4336  
MOHNEN JILT 910  
TC ABERDEEN 759  
MOHNEN JILT 787  
BELL NET RETURN 3U  
NORTHERN VIEW TIBBIE 71R  
BAD LANDS AMBUSH 45M  
WWF ULTRAVOX BELLE 28M

EPD	BW	WW	YW	Milk	TM	ACC	BW	Adj. 205	Adj. 365
0.6	34	77	16	34		70	717	1246	

This bull has outstanding shape and style. His hip and muscle pattern quickly catch your eye. He is a calving ease bull with respectable growth and performance. The maternal strength in this bull is backed by the Belle and Tibbie cow families in this pedigree.

**Recommended for heifers.**



Lot 6

## Northern View Achiever 99E

Lot 6      1975235      FTA 99E      14/01/2017      Male

MOHNEN DENSITY 730  
**MOHNEN SOUTH DAKOTA 402 1727672**  
MOHNEN JILT 539

A A R REALLY WINDY 1205  
**NORTHERN VIEW RUTH 81S 1320010**  
NORTHERN VIEW RUTH 85P

S A V 004 DENSITY 4336  
MOHNEN JILT 910  
TC ABERDEEN 759  
MOHNEN JILT 787  
A A R WINDY RIDGE 362  
A A R LADY KELTON 2170  
SANDY BAR INNOVATOR 5M  
CRESCENT CREEK RUTH 6F

EPD	BW	WW	YW	Milk	TM	ACC	BW	Adj. 205	Adj. 365
3.1	44	80	25	47		90	901	1367	

Achiever 99E is out of a powerful and easy fleshing, Really Windy cow, 81S. This bull is a deep sided and long bull that should add pounds to his calves. I would recommend keeping daughters from this bull if you're looking for structurally sound, maternally outstanding and good milking females. We have one daughter working in our herd, the mother to Lot 7. Ruth 81S has had seven bull calves go through the Blue Collar Sale with last year's offering selling to Christopher Schwatz at Runnymede.



Northern View Ruth 81S  
Dam of Lot 6



Lot 7

## Northern View Achiever 106E

Lot 7      1975242      FTA 106E      17/01/2017      Male

MOHNEN DENSITY 730  
**MOHNEN SOUTH DAKOTA 402 1727672**  
MOHNEN JILT 539

WINDY WILLOWS ALLIANCE 36S  
**NORTHERN VIEW RUTH 87W 1503746**  
NORTHERN VIEW RUTH 81S

S A V 004 DENSITY 4336  
MOHNEN JILT 910  
TC ABERDEEN 759  
MOHNEN JILT 787  
SITZ ALLIANCE 6595  
WWF STOCKMAN EUTHALLA 127J  
A A R REALLY WINDY 1205  
NORTHERN VIEW RUTH 85P

EPD	BW	WW	YW	Milk	TM	ACC	BW	Adj. 205	Adj. 365
3.7	57	93	22	51		90	929	1402	

Another powerful, deep and long South Dakota son. From the powerful Ruth 87W female. The Ruth cows produce powerful bulls and stand out replacement females. A daughter of Ruth 87W was sold to Black Creek Cattle Co. six years ago and has fast become a CAA Elite Female. 106E is very long and has very good depth of body and quarter. This bull is structurally very sound and should make a great sire. I would keep replacement females from this bull.



Northern View Ruth 87W  
Dam of Lot 7





## S A V Cutting Edge 4857

Cutting Edge was the lead off bull at the 2015 S A V Sale. He brought an impressive \$260,000 that day. We selected Cutting Edge for his performance and growth numbers coupled with his overall mass, depth of body and muscle shape. We used him again in 2017. We have a number of calves that are looking very good again.

### Lot 8



## Northern View Epic 110E

Lot 8    1975244    FTA 110E    18/01/2017    Male

The length of spine, depth and structure make this bull a very attractive find. He has powerful numbers for weaning and yearling weights. As far as maternal strength in a bull, this fellow will be hard to beat. His dam, Ruth 84S, has been designated an Elite/Premier Dam by the Canadian Angus Association. We have three of her daughters working in our herd and there are two other daughters working in other purebred herds. Each of her bulls have gone through the Blue Collar Sale. Ruth 84S has perfect feet and is structurally very sound at the age of 12. She had her 11th calf here this spring. Her grandson is Lot 24. Her 2016 Blue Collar offering sold to Hawkeye Ranching, Tompkins, SK. Based on this cow family, this bull should produce fertile and productive females you will want to hang on to.

EPD	BW	WW	YW	Milk	TM
5.2	64	103	27	62	
ACC	BW	Adj. 205	Adj. 365		
	88	1031	1405		

S A V HARVESTOR 0338  
**S A V CUTTING EDGE 4857 1892318**  
 S A V BLACKCAP MAY 5530  
  
 HYLINE RIGHT WAY 781  
**NORTHERN VIEW RUTH 84S 1319962**  
 CRESCENT CREEK RUTH 6F

S A V HERITAGE 6295  
 S A V EMBLYNETTE 7749  
 B C C BUSHWACKER 41-93  
 S A V MAY 7238  
 HYLINE RIGHT TIME 338  
 HYLINE ELLEN 86  
 WHITESTONE FLY TRAVELER 3006  
 CRESCENT CREEK RUTH 21A

**Northern View Ruth 70Y  
 Maternal Sister to Lot 8**



## Northern View Intimidation 119E

Lot 9    2007730    FTA 119E    23/01/2017    Male

S A V HARVESTOR 0338  
**S A V CUTTING EDGE 4857 1892318**  
 S A V BLACKCAP MAY 5530  
  
 SANDY BAR IDEAL 19S 185W  
**SANDY BAR DELIA 232Y 1609550**  
 SANDY BAR DELIA 24W

S A V HERITAGE 6295  
 S A V EMBLYNETTE 7749  
 B C C BUSHWACKER 41-93  
 S A V MAY 7238  
 SANDY BAR IDEAL 19S  
 SANDY BAR ANNIE K 62T  
 SVR HUSSLER 320T  
 RON'S DELIA 22H

EPD	BW	WW	YW	Milk	TM	ACC	BW	Adj. 205	Adj. 365
4.8	51	79	25	52		92	944	1330	

Another long, deep, Cutting Edge son. He has excellent feet and legs. This bull has an incredible dam that we selected from the Sandy Bar dispersal. She has a stunning udder and fantastic feet. The temperament of both this bull and his dam are outstanding.

### Lot 9



# NORTHERN VIEW... Mohnen Pulse 533



We used Pulse as a new and guaranteed calving ease specialist. He did not disappoint us. Pulse is backed by the prolific Jilt cow family. Pulse is phenotypically very sound. These qualities all seem to be passed on to his progeny.

## Lot 10



## Northern View **Luxury** 91E

Lot 10 1975227 FTA 91E 11/01/2017 Male

This bull's build, birth numbers and a negative EPD will give you the Luxury to sleep easy while calving out your heifers. He is deep sided, attractive headed and fronted. His dam, 100Y is a deep and powerful cow. Her daughter, 116B is a show female for us who produced Lot 15 - Neekoman 108E. Buy Luxury 91E as a new genetic and promising calving ease bull from us.

**Recommended for heifers.**

EPD	BW	WW	YW	Milk	TM
-2.4	38	71	22	47	
ACC	BW	Adj. 205	Adj. 365		
	65	792	1171		

MOHNEN HEARTRATE 1751  
**MOHNEN PULSE 533 1806334**  
 MOHNEN JILT 2360  
 BELL NET RETURN 3U  
**NORTHERN VIEW JESTRESS 100Y 1623556**  
 NORTHERN VIEW JESTRESS 74K

S A V HEARTBEAT 9222  
 MOHNEN JILT 787  
 H A R B WINDY 702 J H  
 MOHNEN JILT 2477  
 S A V NET WORTH 4200  
 BELL MS PRIDE 16L  
 STEVENSON FORTUNE 425C  
 CRESCENT CREEK JESTRESS 44G

## Lot 11



## Northern View **Luxury** 109E

Lot 11 1975241 FTA 109E 17/01/2017 Male

MOHNEN HEARTRATE 1751  
**MOHNEN PULSE 533 1806334**  
 MOHNEN JILT 2360

CONNEALY THUNDER  
**NORTHERN VIEW TUBBIE 81Z 1699923**  
 NORTHERN VIEW TUBBIE 81T

S A V HEARTBEAT 9222  
 MOHNEN JILT 787  
 H A R B WINDY 702 J H  
 MOHNEN JILT 2477  
 BALDRIDGE KABOOM K243 KCF  
 PARKA OF CONANGA 241  
 NORTHERN VIEW QUANTUM 86P  
 NORTHERN VIEW TUBBIE 71R

EPD	BW	WW	YW	Milk	TM	ACC	BW	Adj. 205	Adj. 365
-3.1	38	80	28	49			72	874	1340

This bull is out of a beautiful Thunder cow in 81Z. Luxury 109E is deep sided, smooth made and built for calving ease. He has Pulse and Thunder in his pedigree and with a -3.1 BW EPD and 72 lb. birth weight he should calve out like a dream. His maternal brother sold in 2015 sale to Christopher Schwartz of Runnymede.

**Recommended for heifers.**

## Bell Upward 5C

We purchased Upward 5C as a power bull from Bell Angus at the Triple A sale in 2016. We were very familiar with the genetics and traits and consistency they would provide. Upward 5C has proven to produce deep, long bodied, and big topped, structurally sound and attractive cattle. You will also notice a tremendous coat of hair on each of his progeny. We will be breeding a few of his daughters this year and they look like they are going to make great cows.



## Northern View Upward 131E

Lot 12    2000972    FTA 131E    15/02/2017    Male

If you are looking for a power bull with tremendous genetic consistency, this is your guy. This mid February bull has tremendous amounts of hair and scrotal development. He is deep, thick and very eye appealing. He has Upward 307R appear on both top and bottom of his pedigree. Upward 131E has a real pop appeal to him. Touring the pen, he is one of the younger bulls but does rise to the top with the many qualities I have previously mentioned. We have four direct Upward daughters in our herd and each one shows promise of becoming top quality cows at our place. We have one daughter from Beauty 87Y working well in our herd. Jim Manovich of Melville, SK purchased her offering in the 2016 Blue Collar Sale and John and Mary Geisbrecht, Cleardale, AB purchased her bred heifer this spring. If you're looking for power and growth in your calves this bull may be the one to look at closely.

EPD	BW	WW	YW	Milk	TM
4.7	47	82	24	47	

ACC	BW	Adj. 205	Adj. 365
96	897	1363	

NORTHERN VIEW UPWARD 92Y  
**BELL UPWARD 5C 1868192**  
 BELL EUGENIE ERICA 62W  
  
 SITZ UPWARD 307R  
**NORTHERN VIEW BEAUTY 87Y 1623544**  
 NORTHERN VIEW BEAUTY 78K

SITZ UPWARD 307R  
 NORTHERN VIEW EILEENMERE 89R  
 NORTHERN VIEW QUANTUM 86P  
 BELL EUGENIE ERICA 38R  
 CONNEALY ONWARD  
 SITZ HENRIETTA PRIDE 81M  
 NEW FORCE LASER 3H  
 CRESCENT CREEK BEAUTY 118E

## Northern View Tomahawk 132E

Lot 13    2000973    FTA 132E    17/02/2017    Male

NORTHERN VIEW UPWARD 92Y  
**BELL UPWARD 5C 1868192**  
 BELL EUGENIE ERICA 62W  
  
 KMK ALLIANCE 6595 187  
**MVF ZARA LISA 35U 1452468**  
 MVF ZARA LISA 327R

SITZ UPWARD 307R  
 NORTHERN VIEW EILEENMERE 89R  
 NORTHERN VIEW QUANTUM 86P  
 BELL EUGENIE ERICA 38R  
 SITZ ALLIANCE 6595  
 G A R EXT 916  
 MVF VRD DATELINE 13M  
 MVF ZARA LISA 54H

EPD	BW	WW	YW	Milk	TM
4.6	47	68	25	49	

ACC	BW	Adj. 205	Adj. 365
95	959	1333	

Well, every once in a while a person finds a diamond in the rough. Zara Lisa 35U was such a find. We purchased her as a bred heifer from the Mountain View Production Sale in the fall of 2009. The sale of her first calf tripled the money we spent on her. She has been nothing but profitable ever since. We have two gorgeous, Consensus daughters in our herd. Tomahawk 132E is a thick, deep and excellent haired bull. The power of this bull is evident in his growth to weaning. This bull should be a great performance bull that is backed by a strong and proven cow.



# NORTHERN VIEW...

Northern View SMW **Gustov 3Z**



Lot 14



## Northern View **Gustov 2E**

Lot 14      1987491      URZ 2E      20/01/2017      Male

REMITALL H RACHIS 21R  
**NORTHERN VIEW SMW GUSTOV 3Z 1681901**  
 ISLA BANK NEONIA 27S

WINDY WILLOWS ALLIANCE 36S  
**NORTHERN VIEW BLACKCAP 35W 1515023**  
 NORTHERN VIEW BLACKCAP 11P

REMITALL NIGHTHAWK 37N  
 HENDERSON MISSIE 32'02  
 BLACK RIDGE W WIDESPREAD 2K  
 ISLA BANK NEONIA 27N  
 SITZ ALLIANCE 6595  
 WWF STOCKMAN EUTHALLA 127J  
 NORTHERN VIEW FLYING ELIXIR70M  
 NORTHERN VIEW BLACKCAP 10J

EPD	BW	WW	YW	Milk	TM	ACC	BW	Adj. 205	Adj. 365
5.3	52	85	22	43	96	789	1386		

This is a unique and varied genetic opportunity. Gustov 2E has only 139 other siblings in Canada. His sire, Gustov 3Z is owned with Bar CR Angus, SMW Angus and Miller Wilson Angus. He has proven to be a moderate birth weight bull with explosive growth. His weaning and yearling weights are both in the top 10% of the breed. 2E also comes from a very good cow. All the Alliance 36S daughters are very solid and structurally very sound. When you look at this bull you will be impressed by his length and overall size. He is a powerful, smooth made bull that should add pounds to your calves come weaning. You will also want to keep females from this bull.



Naks and Mikc



Mom Good Santa at 2017 Keystone Klassic



## Northern View **Grand Slam 80C**

A Unanimous by Final Answer, stylish bull we sold in 2016 to Bell Angus of Pense, SK for \$10,750. We absolutely loved this bull and Ken was gracious enough to allow us to purchase 1/2 of 80C back and use him too. He is a calving ease bull with weaning weight in the top 15% of the breed and yearling weight in the top 10% of the breed. He is a very efficient breeder. We have used him for two years now and he has produced excellent progeny for us. His first daughters will go into production next calving season. These are his first sons to sell.

## Northern View **Neekoman 108E**

Lot 15    2000330    FTA 108E    17/01/2017    Male

Temperament is an unbelievable quality of this bull. As a calf he was always right beside a person looking to be scratched. Now as a yearling, he is still a friendly fellow. This is Alexis' bull and she is constantly in the pen with this pet of a bull. Neeko has very nice shape, muscle and style about him. His dam, Nellie, was our show heifer as a bred. She is chisel fronted, good footed and good uddered. Neeko will make an excellent bull for calving ease, growth and style. Great shape and muscle expression that would produce awesome steers for the show and sale ring.

**Recommended for heifers.**

EPD	BW	WW	YW	Milk	TM
-0.5	37	75	18	39	

ACC	BW	Adj. 205	Adj. 365
65	851	1317	

### Lot 15



VISION UNANIMOUS 1418  
**NORTHERN VIEW GRAND SLAM 80C 1852032**  
 NORTHERN VIEW LUCY 79X

NORTHERN VIEW NET WORTH 104Y  
**NORTHERN VIEW JESTRESS 116B 1795891**  
 NORTHERN VIEW JESTRESS 100Y

VISIONTOPLINE ROYAL STOCKMAN  
 VISION EDELLA 665  
 S A V FINAL ANSWER 0035  
 NORTHERN VIEW LUCY 85U  
 BELL NET RETURN 3U  
 NORTHERN VIEW TIBBIE 71R  
 BELL NET RETURN 3U  
 NORTHERN VIEW JESTRESS 74K



**Northern View Jestress 116B**  
 Dam of Lot 15



**Alexis and Neekoman 108E**

## Northern View **Grand Slam 117E**

Lot 16    2016367    TTF 117E    22/01/2017    Male

A real tanky and shapely bull here. He has great style and appearance that command attention when one sees him in the pen. When you get in behind this guy you will like his loin and width across the pins. This will be a bull that should calve easy and produce calves that will grow well. This is Talon's bull and he is really proud of how well he has grown and matured.

**Recommended for heifers.**

### Lot 16



PE	BW	WW	YW	Milk	TM
EPD	2.8	47	84	16	40

ACC	BW	Adj. 205	Adj. 365
65	750	1211	

VISION UNANIMOUS 1418  
**NORTHERN VIEW GRAND SLAM 80C 1852032**  
 NORTHERN VIEW LUCY 79X

BLAIRS NEW GENERATION 900Y  
**NORTHERN VIEW BELLE 117B 1804683**  
 NORTHERN VIEW BELLE 102Y

VISIONTOPLINE ROYAL STOCKMAN  
 VISION EDELLA 665  
 S A V FINAL ANSWER 0035  
 NORTHERN VIEW LUCY 85U  
 DUFF NEW GENERATION 6107  
 PRIME TIME'S GRACE 911'99  
 BELL NET RETURN 3U  
 WWF AMBUSH BELLE 166P

# NORTHERN VIEW...

Lot 17



## Northern View **Grand Slam 122E**

Lot 17      2000333      TTF 122E      01/02/2017      Male

VISION UNANIMOUS 1418  
**NORTHERN VIEW GRAND SLAM 80C 1852032**  
 NORTHERN VIEW LUCY 79X

CONNEALY CONSENSUS 7229  
**NORTHERN VIEW SUSAN 122B 1805554**  
 EASTONDALE SUSAN 4712

VISIONTOPLINE ROYAL STOCKMAN  
 VISION EDELLA 665  
 S A V FINAL ANSWER 0035  
 NORTHERN VIEW LUCY 85U  
 CONNEALY CONSENSUS  
 BLUE LILLY OF CONANGA 16  
 BAD LANDS INITIATIVE 375X  
 BAILEY'S SUSAN 5'02

EPD	BW	WW	YW	Milk	TM	ACC	BW	Adj. 205	Adj. 365
2.4	55	84	23	50		85	930	1333	

Another bull Talon has brought to town for you to analyze. Grand Slam 122E has tremendous growth to weaning, beginning with a moderate birth weight. He is out of a young cow that has produced a shapely and muscular bull here for you. I love the shape and tone of this bull. He should make a good bull for moderate birth weigh and rapid growth. The birth numbers for this bull would make him a bull I would field test regarding birth weight before using him exclusively as a heifer bull.



## S A V **Pedigree 4834**

Lot 18



## Northern View **Glide 112E**

Lot 18      1975246      FTA 112E      20/01/2017      Male

S A V PIONEER 7301  
**S A V PEDIGREE 4834 1892347**  
 S A V BLACKCAP MAY 4136

SKYEBROOK NEW FLY 29Z  
**NORTHERN VIEW LUCY 115C 1852070**  
 NORTHERN VIEW LUCY 82A

S A V FINAL ANSWER 0035  
 S A V BLACKBIRD 5297  
 S A V 8180 TRAVELER 004  
 S A V MAY 2397  
 SKYEBROOK FLY TRAVELER 8X  
 SKYEBROOK GIRL 9W  
 CFS BISMARCK 11X  
 NORTHERN VIEW LUCY 79X

EPD	BW	WW	YW	Milk	TM	ACC	BW	Adj. 205	Adj. 365
0.4	53	93	25	51		68	921	1381	

Here is a calving ease bull out of the sweet fronted \$750,000 bull, S A V Pedigree. This bull has excellent muscle shape and masculinity. Glide 112E demonstrates real herd bull qualities in his behaviour and his look. The Lucy cows have been great producers for us. Lucy 115C has done a great job on this, her first calf. With only a 68 lb. birth weight and great growth weights you should be able to easily use this bull on heifers and expect solid growth. J Square S Angus purchased a gorgeous paternal Ruth sibling at the Keystone Sale this past fall.

**Recommended for heifers.**



Alexis at Agribition



Talon at Agribition



## Vision **Unanimous 1418**

We have used Unanimous in our herd over the last three years. His unique outcross pedigree, phenotype, excellent scrotal potential and powerful weight numbers at weaning and yearling have attracted us to him. His bulls and heifers are equally impressive. They are deep bodied, long bodied and as all reports are on Unanimous himself, have great feet and solid leg structure. The progeny we have model very good feet and legs too. We used 20 straws of semen in our herd in spring 2016 and have 16 calves on the ground. We calved out our four Unanimous daughters and all are doing a great job on their calves. We also are using, Grand Slam 80C, a Unanimous son. His calves are coming out easy, have great vigor and are doing real well. His bulls are Lots 15-17. The Unanimous genetics come highly recommended from us based on our experience with his progeny.

## Northern View **Grand Slam 75E**

Lot 19      1975212      FTA 75E      02/01/2017      Male

VISIONTOPLINE ROYAL STOCKMAN  
**VISION UNANIMOUS 1418 1701532**  
VISION EDELLA 665

TC ABERDEEN 759  
**NORTHERN VIEW LUCY 87X 1552552**  
NORTHERN VIEW LUCY 72J

GAMBLES ROYAL FLUSH  
LAGRAND PRIDE 7140  
BOYD ON TARGET 1083  
VISION EDELLA 337  
C R A BEXTOR 872 5205 608  
TC BLACKBIRD 4034  
BELL STOCKADE 7G  
BELL BLACK LUCY 5G

EPD	BW	WW	YW	Milk	TM	ACC	BW	Adj. 205	Adj. 365
3.0	61	111	13	46		84	920	1368	

If you want a bull from a breed leading sire and an awesome foundational cow, then here is your opportunity. When you breed a great sire and a gorgeous cow you should get something pretty darn nice. Grand Slam 75E is a darn nice bull. His mother is a deep, attractive and structurally sound female. We have two daughters in our herd and a third sold in the Keystone Classic in 2016 and is working at Sterling Angus. Lucy 97X's first calf sold to Spilchuk Farms. They have had numerous daughters from him in their herd and are very pleased with this bull's heifers and steers. This is a cow that we are proud to show anyone who comes by the farm. This bull is halter broke and has great disposition.

**Northern View Lucy 87X**  
Dam of Lot 19



**Northern View Lucy 122D**  
Maternal Sister to Lot 19



## Northern View **Grand Slam 78E**

Lot 20      1975215      FTA 78E      03/01/2017      Male

VISIONTOPLINE ROYAL STOCKMAN  
**VISION UNANIMOUS 1418 1701532**  
VISION EDELLA 665

NORTHERN VIEW FLYING ELIXIR70M  
**NORTHERN VIEW LUCY 83R 1259826**  
NORTHERN VIEW LUCY 72J

GAMBLES ROYAL FLUSH  
LAGRAND PRIDE 7140  
BOYD ON TARGET 1083  
VISION EDELLA 337  
ANKONIAN ELIXIR 100  
CRESCENT CREEK RUTH 6F  
BELL STOCKADE 7G  
BELL BLACK LUCY 5G

EPD	BW	WW	YW	Milk	TM	ACC	BW	Adj. 205	Adj. 365
4.4	59	110	17	49		86	950	1411	

If you want to have a bull out of a very good cow that has produced extremely well for all 12 of her calves then here is the bull. Lucy 83R produces both bulls and heifers with everything you want in an Angus animal. We've had all four of this 70M's daughters working in our herd. Her 2015 Blue Collar offering was our high selling bull to Corvet Angus. This bull gets better and better each time I look at him. I have analyzed him in the corral, at the feed bunk and when he got his hair cut. I have checked out his feet, scrotal development, top, quarter....this guy seems to have it all together.



## Northern View **Grand Slam 92E**

Lot 21      1975229      FTA 92E      12/01/2017      Male

VISIONTOPLINE ROYAL STOCKMAN  
**VISION UNANIMOUS 1418 1701532**  
VISION EDELLA 665

WINDY WILLOWS ALLIANCE 36S  
**NORTHERN VIEW TIBBIE 99X 1552563**  
NORTHERN VIEW TIBBIE 81T

GAMBLES ROYAL FLUSH  
LAGRAND PRIDE 7140  
BOYD ON TARGET 1083  
VISION EDELLA 337  
SITZ ALLIANCE 6595  
WWF STOCKMAN EUTHALLA 127J  
NORTHERN VIEW QUANTUM 86P  
NORTHERN VIEW TIBBIE 71R

EPD	BW	WW	YW	Milk	TM	ACC	BW	Adj. 205	Adj. 365
4.7	62	106	21	55		90	980	1440	

Power, style and functional are words that quickly come to mind when thinking of this Unanimous Son. His dam, 99X is a beautiful Alliance 36S daughter. She has great feet, legs, udder and is as an attractive a cow as you would want. 92E has power and growth numbers in his weaning and yearling numbers, add in his length of spine and depth of body, his calves should really push down the scale. Daughters from this bull will likely be ones to hang onto. This bull is halter broke.



# NORTHERN VIEW...

**Lot 22**



## Northern View **Grand Slam** 95E

Lot 22    1975231    FTA 95E    13/01/2017    Male

This Unanimous son is quite a specimen. He has amazing bone structure, great width of hip and quarter, super scrotal development and fantastic hair coat. A real power bull here. His dam, 95X, is a great producer for us. Her milk EPD is in the top 1% of the Angus breed. She has had two daughter and we have retained them both. Princess 95X is the granddam to our Lot 25 bull. If you are looking for power and growth check out this guy's weaning and yearling weights. Maternal brothers have sold through the Blue Collar for the past two years in 2016 to Dale Minnhinck and in 2017 to Rafter M.

EPD	BW	WW	YW	Milk	TM
1.4	51	101	24	54	
ACC	BW	Adj. 205	Adj. 365		
75	991	1457			

VISIONTOPLINE ROYAL STOCKMAN  
**VISION UNANIMOUS 1418 1701532**  
 VISION EDELLA 665

SKYE-VIEW BEEF MAKER 5T  
**NORTHERN VIEW PRINCESS 95X 1552580**  
 NORTHERN VIEW PRICISS 74S

GAMBLES ROYAL FLUSH  
 LAGRAND PRIDE 7140  
 BOYD ON TARGET 1083  
 VISION EDELLA 337  
 BOYD BEEF MAKER 3069  
 SKYE-VIEW QUEEN 4M  
 NORTHERN VIEW FLYING ELIXIR70M  
 WILBAR PRINCESS 345K

**Lot 23**



## Northern View **Grand Slam** 98E

Lot 23    1975234    FTA 98E    14/01/2017    Male

VISIONTOPLINE ROYAL STOCKMAN  
**VISION UNANIMOUS 1418 1701532**  
 VISION EDELLA 665

TGA BLACKMAN 8311U  
**NORTHERN VIEW PRINCESS 101Y 1623555**  
 NORTHERN VIEW PRINCESS 78W

GAMBLES ROYAL FLUSH  
 LAGRAND PRIDE 7140  
 BOYD ON TARGET 1083  
 VISION EDELLA 337  
 GEIS BLACKMAN 224'05  
 TGA MS DELEGATE 3145N  
 NORTHERN VIEW QUANTUM 86P  
 NORTHERN VIEW PRINCESS 79N

EPD	BW	WW	YW	Milk	TM	ACC	BW	Adj. 205	Adj. 365
2.1	48	92	17	44		80	891	1357	

This bull is a powerful and stylish bull with what one may say above average weights and numbers. There are no extremes in this bull. He is just a really solid bull all around. His dam is Princess 101Y. I have always liked this bull's length and style, in addition to his adequate hip and quarter. When you scan over the top of this bull you will have to appreciate his loin. This Blackman daughter has been producing very well for us. We have a full sister to 98E that calved this spring for the first time. She is doing an excellent job on her Special Focus bull calf. A maternal brother sold to Har J Cattle Co. in the 2015 Blue Collar Sale.



Family photo  
at Agribition



# NORTHERN VIEW... Northern View Grand Slam 101E

Lot 24 1975237 FTA 101E 15/01/2017 Male

## Lot 24



Awesome genes should produce awesome calves and that is exactly what has occurred here. Grand Slam 101E is a tremendously smooth and thick haired bull. He has truly become a standout and herd sire material without a doubt. He comes from our prolific Ruth cow family. His grandmother and great grandmother will appear in the majority of our pedigrees in our herd. Each of the Ruth's have outstanding feet, depth of body and udder quality. They are females that you need to follow in the pens and pasture to truly appreciate. More than one breeder has asked why we are not flushing Ruth 84S, Ruth 70Y and now Ruth 88A. I guess we should maybe get on that, but in the mean time there is 101E. He has a low birth weight coupled with stupendous weaning and yearling weights. The structure and style of this bull will demand your attention when you see him and his dam will make you love him even more. His grandmother is an elite/premier dam. Grand Slam's full brother sadly got laid on in 2016 and her 2015 Special Focus calf sold to Jonathan Grunert of Yorkton, SK. Take a very close and serious look at this bull. He will work on heifers and cows.

EPD	BW	WW	YW	Milk	TM
	1.4	59	116	22	53

ACC	BW	Adj. 205	Adj. 365
	80	937	1491

VISIONTOPLINE ROYAL STOCKMAN  
**VISION UNANIMOUS 1418 1701532**  
VISION EDELLA 665

CONNEALY THUNDER  
**NORTHERN VIEW RUTH 88A 1744132**  
NORTHERN VIEW RUTH 84S

GAMBLES ROYAL FLUSH  
LAGRAND PRIDE 7140  
BOYD ON TARGET 1083  
VISION EDELLA 337  
BALDRIDGE KABOOM K243 KCF  
PARKA OF CONANGA 241  
HYLINE RIGHT WAY 781  
CRESCENT CREEK RUTH 6F

## Northern View Ruth 88A Dam to Lot 24



## Northern View Grand Slam 103E

Lot 25 1975260 FTA 103E 15/01/2017 Male

VISIONTOPLINE ROYAL STOCKMAN  
**VISION UNANIMOUS 1418 1701532**  
VISION EDELLA 665

CONNEALY THUNDER  
**NORTHERN VIEW PRINCESS 99Z 1675547**  
NORTHERN VIEW PRINCESS 95X

GAMBLES ROYAL FLUSH  
LAGRAND PRIDE 7140  
BOYD ON TARGET 1083  
VISION EDELLA 337  
BALDRIDGE KABOOM K243 KCF  
PARKA OF CONANGA 241  
SKYE-VIEW BEEF MAKER 5T  
NORTHERN VIEW PRINCESS 74S

EPD	BW	WW	YW	Milk	TM	ACC	BW	Adj. 205	Adj. 365
0.4	61	92	24	57		78	958	1286	

Grand Slam 103E has always looked great. He has demonstrated real good muscle pattern and shape. Thick and chunky would be two words I would use to describe this bull. His dam has had four calves and is indexing 112 on them. As a result, she has been designated as a CAA Elite Dam this spring. This cow is one that is deep and powerful yet feminine. She is a real eye pleaser. Princess 99Z ranks in the top 1% in the breed for milk and maternal. A maternal daughter is working well for Jon Locke, Macklin, SK. A paternal brother is working at Venture Farms and her 2016 offering was purchased by Russel Vollman at Preeceville, SK. Princess 99Z has dropped a Cutting Edge bull calf that will in all likelihood be in next year's sale. This bull should add shape and style to his calves as well as maternal power. A wise cattleperson once told me, "any time you can grab genetics from an elite animal do not miss that opportunity", be sure to seize this one. **Recommended for heifers.**

## Lot 25



## Northern View Magnate 110D Maternal Brother to Lot 25



## Northern View Grand Slam 113E

Lot 26 1975249 TTF 113E 20/01/2017 Male

VISIONTOPLINE ROYAL STOCKMAN  
**VISION UNANIMOUS 1418 1701532**  
VISION EDELLA 665

BELL NET RETURN 3U  
**NORTHERN VIEW BELLE 102Y 1623558**  
WWF AMBUSH BELLE 166P

GAMBLES ROYAL FLUSH  
LAGRAND PRIDE 7140  
BOYD ON TARGET 1083  
VISION EDELLA 337  
S A V NET WORTH 4200  
BELL MS PRIDE 16L  
BAD LANDS AMBUSH 45M  
WWF ULTRAVOX BELLE 28M

EPD	BW	WW	YW	Milk	TM	ACC	BW	Adj. 205	Adj. 365
4.1	63	111	14	47		84	965	1431	

A true power bull. He is in the top 5% of the breed for weaning weight and yearling weight. This is a bull that Talon is quite proud. He is deep, thick, long and very eye appealing. Talon has all three daughters working in his herd at this point. They are doing very well for him. When each of our children were old enough we wanted to start them with a top notch female. As a result, Talon's first cow was Belle 102Y aka Bella. Grand Slam 113E is smooth made and stylish backed by a powerful cow family.

## Lot 26



April 14, 2018

# NORTHERN VIEW ANGUS

# PARKWOOD...

**Lot 27**



Mohnen **South Dakota 402**



## Parkwood **South Dakota 20E**

Lot 27      1975274      BJA 20E      03/01/2017      Male

MOHNEN DENSITY 730  
**MOHNEN SOUTH DAKOTA 402 1727672**  
 MOHNEN JILT 539

MVF UPWARD 236X  
**PARKWOOD HEROINE 84Z 1688348**  
 CRESCENT CREEK HEROINE 160P

S A V 004 DENSITY 4336  
 MOHNEN JILT 910  
 TC ABERDEEN 759  
 MOHNEN JILT 787  
 SITZ UPWARD 307R  
 MVF ELLEN 112S  
 CRESCENT CREEK REVIVAL 06J  
 CRESCENT CREEK HEROINE 62J

EPD	BW	WW	YW	Milk	TM	ACC	BW	WW	Adj. YW
4.9	59	107	19	50	90	915	1343		

Again this year we are pleased to be leading off our offering of bulls with this South Dakota son. 20E is a high performance bull with volume, length and muscle that will have the ability to sire calves that will be easily marketable.

**Lot 28**



## Parkwood **South Dakota 13E**

Lot 28      1977132      WHBA 13E      02/01/2017      Male

MOHNEN DENSITY 730  
**MOHNEN SOUTH DAKOTA 402 1727672**  
 MOHNEN JILT 539

SOO LINE MOTIVE 9016  
**BAR D K BEAUTY 3'11 1638055**  
 LLB BEAUTY 692U

S A V 004 DENSITY 4336  
 MOHNEN JILT 910  
 TC ABERDEEN 759  
 MOHNEN JILT 787  
 HF KODIAK 5R  
 TLA BEAUTY 5R  
 DLMJ IMAGE MAKER 2S  
 LLB BEAUTY 212R

EPD	BW	WW	YW	Milk	TM	ACC	BW	WW	Adj. YW
3.8	62	94	24	57	93	1010	1306		

13E is as long as a train with extra growth and performance. He would be an ideal sire for heavy weaning progeny.

**Lot 29**



## Parkwood **South Dakota 9E**

Lot 29      1977133      WHBA 9E      02/01/2017      Male

MOHNEN DENSITY 730  
**MOHNEN SOUTH DAKOTA 402 1727672**  
 MOHNEN JILT 539

CRESCENT CREEK SUPER X 91S  
**PARKWOOD QUEEN RUTH 32X 1562045**  
 PARKWOOD QUEEN RUTH 167U

S A V 004 DENSITY 4336  
 MOHNEN JILT 910  
 TC ABERDEEN 759  
 MOHNEN JILT 787  
 DWAJO SUPER X 104N  
 CRESCENT CREEK ROSEBUD 97P  
 S A V FINAL ANSWER 003S  
 PARKWOOD QUEEN RUTH 153S

EPD	BW	WW	YW	Milk	TM	ACC	BW	WW	Adj. YW
4.5	59	103	19	50	92	925	1349		

9E's Super X dam has as much depth, mass and fleshing ability as any cow on the farm. This bull has extra growth and performance and the numbers to back it. At previous sales, a son was sold to Jeff Davis and 3K Holdings as well as a daughter to Ryan Ferguson.

## Parkwood South Dakota 11E

Lot 30 1975276 BJA 11E 03/01/2017 Male

MOHNEN DENSITY 730  
**MOHNEN SOUTH DAKOTA 402 1727672**  
 MOHNEN JILT 539

CAR TANK 226  
**SOO LINE PRINCESS 8206 1438347**  
 SOO LINE PRINCESS 6169

S A V 004 DENSITY 4336  
 MOHNEN JILT 910  
 TC ABERDEEN 759  
 MOHNEN JILT 787  
 CAR TRACKER 904  
 C A R IDEAL PRIME LADY 515  
 CUDLOBE YELLOWSTONE 80M  
 KENBERT CHIEF PRINCESS 47N

EPD	BW	WW	YW	Milk	TM	ACC	BW	WW	Adj. YW
4.7	53	94	21	47			92	855	1289

Here's a true stock bull with thickness, muscle, volume and performance. Soo Line Princess is a moderate framed, easy doing female that never misses. She has sold four sons at previous sales.



## Parkwood South Dakota 27E

Lot 31 1977139 WHBA 27E 05/01/2017 Male

MOHNEN DENSITY 730  
**MOHNEN SOUTH DAKOTA 402 1727672**  
 MOHNEN JILT 539

SITZ UPWARD 307R  
**PARKWOOD HEATHER 28B 1792416**  
 PARKWOOD HEATHER 130U

S A V 004 DENSITY 4336  
 MOHNEN JILT 910  
 TC ABERDEEN 759  
 MOHNEN JILT 787  
 CONNEALY ONWARD  
 SITZ HENRIETTA PRIDE 81M  
 MVF VRD DATELINE 5M  
 HEATHER OF PARKWOOD 13L

EPD	BW	WW	YW	Milk	TM	ACC	BW	WW	Adj. YW
4.6	65	115	23	56			90	880	1326

The consistency of these South Dakota sons is second to none. 27E is loaded with meat and muscle from front to back.



## Parkwood South Dakota 12E

Lot 32 1977039 WHBS 12E 03/01/2017 Male

MOHNEN DENSITY 730  
**MOHNEN SOUTH DAKOTA 402 1727672**  
 MOHNEN JILT 539

CRESCENT CREEK SUPER X 91S  
**PARKWOOD MISS HAPPY 34Z 1681004**  
 PARKWOOD MISS HAPPY 22W

S A V 004 DENSITY 4336  
 MOHNEN JILT 910  
 TC ABERDEEN 759  
 MOHNEN JILT 787  
 DWAJO SUPER X 104N  
 CRESCENT CREEK ROSEBUD 97P  
 REMINGTON COPENHAGEN 137R  
 OTA MISS HAPPY 75N

EPD	BW	WW	YW	Milk	TM	ACC	BW	WW	Adj. YW
2.8	54	91	13	40			85	785	1205

A moderate framed, South Dakota bull with loads of thickness, muscle and fleshing ability with a modest birth weight. 34Z is hands down the most docile cow in our herd and has loads of femininity and muscle.



# PARKWOOD...

**Lot 33**



**SAV Seedstock 4838**



## Parkwood Seedstock 21E

Lot 33      1977038      WHBS 21E      02/01/2017      Male

SA V REGISTRY 2831  
**SAV SEEDSTOCK 4838 1890621**  
 SA V BLACKCAP MAY 4136  
 REMINGTON COPENHAGEN 137R  
**PARKWOOD MISS HAPPY 22W 1505483**  
 OTA MISS HAPPY 75N

RITO 707 OF IDEAL 3407 7075  
 SA V MADAME PRIDE 0075  
 SA V 8180 TRAVELER 004  
 SA V MAY 2397  
 SCA 3299 OF IDEAL 1418  
 ISLA BANK PRIDE 40M  
 V A F HAPPY OSCAR 57  
 VALLEY RIDGE ELBA 4Y

EPD	BW	WW	YW	Milk	TM	ACC	BW	WW	Adj. YW
3.8	55	97	19	48	91	940	1374		

This is a heavy, high performance Seedstock son. Seedstock was the featured lot in the 2015 Schaff SA V Bull sale. All of 22W's progeny are currently working in our herd or have been sold at previous sales.

**Lot 34**



## Parkwood Seedstock 39E

Lot 34      1977144      WHBA 39E      08/01/2017      Male

SA V REGISTRY 2831  
**SA V SEEDSTOCK 4838 1890621**  
 SA V BLACKCAP MAY 4136  
 SITZ UPWARD 307R  
**PARKWOOD TIBBIE 11Z 1705180**  
 MVF TIBBIE 813P

RITO 707 OF IDEAL 3407 7075  
 SA V MADAME PRIDE 0075  
 SA V 8180 TRAVELER 004  
 SA V MAY 2397  
 CONNEALY ONWARD  
 SITZ HENRIETTA PRIDE 81M  
 GDAR SVF TRAVELER 234D  
 MVF TIBBIE 52F

EPD	BW	WW	YW	Milk	TM	ACC	BW	WW	Adj. YW
3.0	55	91	27	56	88	950	1274		

Seedstock 4838 was one of the stoutest, biggest young sires to be found in 2015. 39E fits the mold of his sire! We thought enough of 11Z to flush her and we are excited at all of her calves on the ground this year. A daughter was sold at a previous sale to Thad Trefiak and another daughter is currently working in our herd.

**Lot 35**



## Parkwood Seedstock 49E

Lot 35      1975281      BJA 49E      13/01/2017      Male

SA V REGISTRY 2831  
**SA V SEEDSTOCK 4838 1890621**  
 SA V BLACKCAP MAY 4136  
 REMINGTON COPENHAGEN 137R  
**PARKWOOD HEROINE 115X 1561832**  
 CRESCENT CREEK HEROINE 160P

RITO 707 OF IDEAL 3407 7075  
 SA V MADAME PRIDE 0075  
 SA V 8180 TRAVELER 004  
 SA V MAY 2397  
 SCA 3299 OF IDEAL 1418  
 ISLA BANK PRIDE 40M  
 CRESCENT CREEK REVIVAL 06J  
 CRESCENT CREEK HEROINE 62J

EPD	BW	WW	YW	Milk	TM	ACC	BW	WW	Adj. YW
5.3	62	96	19	50	95	890	1200		

49E presents the thickness, volume and muscle shape of an ideal beef bull. 115X is a moderately framed cow with femininity and maternal function.

## Parkwood Seedstock 26E

Lot 36      1977136      WHBA 26E      03/01/2017      Male

SAV REGISTRY 2831  
**SAV SEEDSTOCK 4838 1890621**  
 SAV BLACKCAP MAY 4136

CRESCENT CREEK SUPER X 91S  
**PARKWOOD JOYCE 111Y 1620051**  
 JOYCE OF PARKWOOD 24J

RITO 707 OF IDEAL 3407 7075  
 SAV MADAME PRIDE 0075  
 SAV 8180 TRAVELER 004  
 SAV MAY 2397  
 DWAJO SUPER X 104N  
 CRESCENT CREEK ROSEBUD 97P  
 WINDY WILLOWS STOCKADE 91G  
 JO-JOYCE OF PARKWOOD 24A

EPD	BW	WW	YW	Milk	TM	ACC	BW	WW	Adj. YW
2.5	45	74	16	38			88	790	1151

A real beef bull with loads of thickness, muscle and volume. His nice uddered dam has been a consistent and proven producer on the farm.



## Parkwood Unanimous 54E

Lot 37      1977150      WHBA 54E      14/01/2017      Male

VISION UNANIMOUS 1418  
**HBH BAKARI 418B 1784508**  
 HBH BANDOLIER LASS 18R

MVF VRD DATELINE 5M  
**PARKWOOD HEATHER DALE 96W 1505996**  
 HEATHER DALE OF PARKWOOD 14M

VISIONTOPLINE ROYAL STOCKMAN  
 VISION EDELLA 665  
 TC FOREMAN 016  
 KEMBAR BANDOLIER LASS 23N  
 VERMILION DATELINE 7078  
 MVF LADY ANNE 30F  
 SAF SIDEKICK 36J  
 HEATHER DALE OF PARKWOOD 14D

EPD	BW	WW	YW	Milk	TM	ACC	BW	WW	Adj. YW
1.4	36	78	18	36			82	815	1295

HBH Bakari was our top choice at the Cattlemen's Connection Bull Sale. His calves have exceeded our expectations. 54E is an easy fleshing bull with massive capacity, depth and volume. A maternal brother was sold at a previous sale to Dan and Lana Petherbridge.



## Parkwood Unanimous 123E

Lot 38      1977180      WHBA 123E      07/02/2017      Male

VISION UNANIMOUS 1418  
**HBH BAKARI 418B 1784508**  
 HBH BANDOLIER LASS 18R

MVF UPWARD 236X  
**PARKWOOD HEATHER DALE 101B 1792445**  
 PARKWOOD HEATHER DALE 34Y

VISIONTOPLINE ROYAL STOCKMAN  
 VISION EDELLA 665  
 TC FOREMAN 016  
 KEMBAR BANDOLIER LASS 23N  
 SITZ UPWARD 307R  
 MVF ELLEN 112S  
 SAV LEWIS 8373  
 PARKWOOD HEATHER DALE 140T

EPD	BW	WW	YW	Milk	TM	ACC	BW	WW	Adj. YW
3.7	53	107	20	46			88	795	1421

123E will inject performance, appetite and gain ability to his progeny. His nice uddered dam has built a thick, muscular bull that will work in any herd.



# PARKWOOD...

Lot 39



## Parkwood Unanimous 76E

Lot 39      1977157      WHBA 76E      20/01/2017      Male

VISION UNANIMOUS 1418  
**HBH BAKARI 418B 1784508**  
 HBH BANDOLIER LASS 18R  
 S A V PIONEER 7301  
**PARKWOOD TIBBIE 1B 1825781**  
 MVF TIBBIE 813P

VISIONTOPLINE ROYAL STOCKMAN  
 VISION EDELLA 665  
 TC FOREMAN 016  
 KEMBAR BANDOLIER LASS 23N  
 S A V FINAL ANSWER 0035  
 S A V BLACKBIRD 5297  
 GDAR SVF TRAVELER 234D  
 MVF TIBBIE 52F

EPD	BW	WW	YW	Milk	TM	ACC	BW	WW	Adj. YW
1.4	42	82	22	43			78	790	1267

76E is a long, heavy muscled, stout rumped, Unanimous bull from one of the strongest maternal lines in the Angus breed.

Lot 40



## Parkwood Payout 52E

Lot 40      1977149      WHBA 52E      14/01/2017      Male

RING CREEK BIG PAYOUT 41Z  
**MVF PAYOUT 30B 1811668**  
 MVF HI LITE 456W  
 S A V LEWIS 8373  
**PARKWOOD HEATHER JOY 47X 1562049**  
 PARKWOOD HEATHER JOY 71S

CONNELLY CONSENSUS 7229  
 LADY OF RING CREEK 10W  
 NORSEMAN FRONTIER 2'07  
 MVF HI LITE 20P  
 S A V 8180 TRAVELER 004  
 S A V BESSIE HEIRESS 1184  
 MVF VRD DATELINE 5M  
 PARKWOOD HEATHER JOY 77N

EPD	BW	WW	YW	Milk	TM	ACC	BW	WW	Adj. YW
2.6	50	93	24	50			86	880	1337

We selected Payout for his ability to sire calves with lower birth weight and explosive growth. With a weaning weight of 880 lbs. and a 365 day weight of 1325 lbs., this will appeal to cattlemen that want cattle that perform. 47X is a thick and moderate cow from one of our favourite female producing herdsires.

Lot 41



## Parkwood Payout 89E

Lot 41      1977161      WHBA 89E      22/01/2017      Male

RING CREEK BIG PAYOUT 41Z  
**MVF PAYOUT 30B 1811668**  
 MVF HI LITE 456W  
 S A V HERITAGE 6295  
**PARKWOOD ALICIA 10X 1562035**  
 PARKWOOD ALICIA 31L

CONNELLY CONSENSUS 7229  
 LADY OF RING CREEK 10W  
 NORSEMAN FRONTIER 2'07  
 MVF HI LITE 20P  
 CAR DUKE 104  
 S A V BLACKCAP MAY 4136  
 BROOKMORE SUCCEED 117F  
 ALICIA WIN OF PARKWOOD 10G

EPD	BW	WW	YW	Milk	TM	ACC	BW	WW	Adj. YW
3.6	51	100	25	50			92	850	1387

89E offers exceptional thickness, muscle and volume in a complete structurally sound package. His Heritage dam is moderate framed and easy fleshing with a beautiful udder.

**Lot 42**



**S A V Resource 1441**



## Parkwood **Resource 2E**

Lot 42      1975272      BJA 2E      02/01/2017      Male

RITO 707 OF IDEAL 3407 7075  
**S A V RESOURCE 1441 1707295**  
 S A V BLACKCAP MAY 4136

HF KODIAK 123Y  
**PARKWOOD BLACKBIRD 75A 1735911**  
 PARKWOOD BLACKBIRD 92Y

R R RITO 707  
 IDEAL 3407 OF 1418 076  
 S A V 8180 TRAVELER 004  
 S A V MAY 2397  
 HF KODIAK 5R  
 2HR TIBBIE 30R  
 SITZ UPWARD 307R  
 MVF BLACKBIRD 346R

EPD	BW	WW	YW	Milk	TM	ACC	BW	WW	Adj. YW
3.4	61	114	23	54	89	885	1306		

Resource 1441 has gained the admiration of cattlemen for siring body mass and producing easy keeping, highly productive daughters. 2E has added length, growth and muscle which will add dollars to your bottom line.

**Lot 43**



**S A V Regard 4863**



## Parkwood **Regard 19E**

Lot 43      1977041      WHBS 19E      03/01/2017      Male

S A V RESOURCE 1441  
**S A V REGARD 4863 1887296**  
 S A V BLACKCAP MAY 5530

WINDY WILLOWS STOCKADE 91G  
**EPPONIA OF PARKWOOD 1091038**  
 EPPONIA OF PARKWOOD 1G

RITO 707 OF IDEAL 3407 7075  
 S A V BLACKCAP MAY 4136  
 B C C BUSHWACKER 41-93  
 S A V MAY 7238  
 WIWA CREEK STOCKMAN 26'95  
 WINDY WILLOWS JENNIFER 96B  
 PERRYVILLE PEARSON 17D  
 2J EPPONIA 13A

EPD	BW	WW	YW	Milk	TM	ACC	BW	WW	Adj. YW
4.9	54	75	20	48	92	890	1147		

Regard 4863 is a standout for muscle, masculinity and overall body capacity. This will be the last offering of 19E's Epponia dam. After 16 years of consistently producing calves, everything good must come to an end.

# PARKWOOD...

Lot 44



## Parkwood **Double Vision** 25E

Lot 44      1977134      WHBA 25E      03/01/2017      Male

CONNEALY REFLECTION  
**JINDRA DOUBLE VISION 1764385**  
 HOFF RACHEL 8312 405

CONNEALY IMPRINT 8317  
**PARKWOOD HEATHER BONNY 6A 1735816**  
 HEATHER BONNY OF PARKWOOD 26M

BON VIEW NEW DESIGN 878  
 HAPPY GRILL OF CONANGA 6260  
 HOFF LIMITED EDITION SC 594  
 HOFF MISS EXPO S C 4223  
 CONNEALY IMPRESSION  
 ELLINA OF CONANGA 868 7127  
 CRESCENT CREEK LEGEND 148G  
 HEATHER BONNIE OF PARKWOOD 4A

EPD	BW	WW	YW	Milk	TM	ACC	BW	WW	Adj. YW
1.8	50	93	22	47			82	870	1282

When pounds pay, look to Double Vision. He sires high performance, heavy weaning progeny that has him in the top 3% of the breed for weaning and 1% for yearling. 25E is a bigger framed, growth bull with added length and stretch.

## Jindra **Double Vision**



Lot 45



## Parkwood **Double Vision** 36E

Lot 45      1977143      WHBA 36E      07/01/2017      Male

CONNEALY REFLECTION  
**JINDRA DOUBLE VISION 1764385**  
 HOFF RACHEL 8312 405

BAR D K ANSWER 20'11  
**PARKWOOD HEATHER QUEEN 47B 1801968**  
 PARKWOOD HEATHER QUEEN 15Z

BON VIEW NEW DESIGN 878  
 HAPPY GRILL OF CONANGA 6260  
 HOFF LIMITED EDITION SC 594  
 HOFF MISS EXPO S C 4223  
 S A V FINAL ANSWER 0035  
 BAR D K BARANDA 22'09  
 HARB PENDLETON 765 J H  
 PARKWOOD HEATHER QUEEN 32P

EPD	BW	WW	YW	Milk	TM	ACC	BW	WW	Adj. YW
1.6	52	95	26	52			82	805	1229

36E is moderately framed, broad backed and as thick as they come. He offers mating flexibility for many of today's popular performance and carcass pedigrees.



Lot 46



## Parkwood Tiger 91E

Lot 46      1977164      WHBA 91E      25/01/2017      Male

HF TIGER 5T <b>PARKWOOD TIGER 5A 1764922</b> MVF ELLEN 634T  G T MAXIMUM <b>PARKWOOD WILLA QUEEN 23C 1857981</b> PARKWOOD WILLA QUEEN 69W	HF KODIAK 5R HF ECHO 84R CONNEALY FREIGHTLINER MVF ELLEN 26N SCOTCH CAP GT MISS TRAVELER 58 MVF VRD DATELINE 5M WILLA QUEEN OF PARKWOOD 6G
---	---

EPD	BW	WW	YW	Milk	TM	ACC	BW	WW	Adj. YW
3.2	40	80	19	40	82	670	1237		

91E is a calving ease bull with thickness, expressive muscle and balance. Tiger bulls are known for correct structure, appealing muscle shape and proud character as well as early gestation and calving ease. We would recommend him for heifers.

## HF Tiger 5T



## Parkwood Tiger 98E

Lot 47      1977167      WHBA 98E      26/01/2017      Male

HF TIGER 5T <b>PARKWOOD TIGER 5A 1764922</b> MVF ELLEN 634T  BAR D K ANSWER 20'11 <b>PARKWOOD HEATHER QUEEN 92C 1858018</b> PARKWOOD HEATHER QUEEN 29A	HF KODIAK 5R HF ECHO 84R CONNEALY FREIGHTLINER MVF ELLEN 26N S A V FINAL ANSWER 0035 BAR D K BARANDA 22'09 HF KODIAK 123Y PARKWOOD HEATHER QUEEN 32P
--	---

EPD	BW	WW	YW	Milk	TM	ACC	BW	WW	Adj. YW
3.6	47	84	23	45	80	665	1123		

Here's a light birth weight bull out of a first calf heifer that will work well on heifers. 98E's sire has been used extensively and successfully for five calving seasons on heifers. He is a smooth fronted, thick topped bull that would still have enough performance to get the job done.

Lot 47



# PARKWOOD

Lot 48



## Parkwood **McCoy** 122E

Lot 48      1977056      WHBS 122E      06/02/2017      Male

<p>S MCCOY 124  <b>CRESCENT CREEK MCCOY 10C 1847454</b>          CRESCENT CREEK QUEEN RUTH 151A</p> <p>COLE CREEK CEDAR RIDGE 1V  <b>PARKWOOD LAWN 1C 1858044</b>          PARKWOOD LAWN 42A</p>	<p>RA LINCOLN W144          S MAYFLOWER 751          CRESCENT CREEK TOMBOY 15W          CRESCENT CREEK QUEEN RUTH 155T          COLE CREEK BLACK CEDAR 46P          COLE CREEK CLOVANADA 49S          HF KODIAK 123Y          PARKWOOD LAWN 82S</p>
--	---

EPD	BW	WW	YW	Milk	TM	ACC	BW	WW	Adj. YW
0.1	48	79	27	53	75	750	1283		

McCoy was our pick of the 2016 Crescent Creek Bull Sale for his calving ease. This is one of those bulls that you can go to sleep at night and not worry. We just calved out his second set of calves all of which were unassisted again on first calf heifers.

## S **McCoy** 124



Katie, Landon and Macy with their 4H calves

## SHR Easy Decision 77E

Lot 49      2007159      SHR 77E      02/04/2017      Male

VIN-MAR O'REILLY FACTOR  
**BUSHS EASY DECISION 98 1786857**  
 BUSHS BIG BLACKBIRD 7885

S A V FINAL ANSWER 0035  
 VIN-MAR EDELLA 2827  
 BUSHS BIG TIME 452  
 BUSHS DAKOTA BLACKBIRD 4763  
 S A V 707 RITO 9969  
 A C DUKE GIRL 57  
 HF TIGER 5T  
 HF JUNE 55W

EPD	BW	WW	YW	Milk	TM	ACC	BW	WW	Feb 6 YW
1.5	66	119	22	55	76	864	1350		

Moderate frame with loads of thickness, 77E was part of our Agribition string this past year. Out of the SHRX 129B Revere daughter, flushmate to the high selling bull at the 10th Annual Blue Collar Sale selling to Greg and Lori Boughton of Roblin, MB for 1/2 share at \$24,000.



**BUSHS Easy Decision 98**



## SHR Easy Decision 64E

Lot 50      2007134      SHR 64E      28/01/2017      Male

VIN-MAR O'REILLY FACTOR  
**BUSHS EASY DECISION 98 1786857**  
 BUSHS BIG BLACKBIRD 7885

S A V BRILLIANCE 8077  
**NORTHERN VIEW ANNIE K 134B 1795899**  
 F V ANNIE K FA 130Z

S A V FINAL ANSWER 0035  
 VIN-MAR EDELLA 2827  
 BUSHS BIG TIME 452  
 BUSHS DAKOTA BLACKBIRD 4763  
 S A V BISMARCK 5682  
 S A V BLACKCAP MAY 5270  
 S A V FINAL ANSWER 0035  
 F V ANNIE K QUEEN 1U

EPD	BW	WW	YW	Milk	TM	ACC	BW	WW	Feb 6 YW
1.7	57	93	19	48	84	832	1147		

134B, pedigree packed with S A V proven genetics, Brilliance, Bismarck, Final Answer on the bottom side and Easy Decision on the top side of the pedigree. Maternal strength at its best.



## SHR Pulse 66E

Lot 51      2007141      SHR 66E      01/02/2017      Male

MOHNEN HEARTRATE 1751  
**MOHNEN PULSE 533 1806334**  
 MOHNEN JILT 2360

HF TIGER 5T  
**MVF FAVORITE 36B 1791189**  
 MVF FAVORITE 406W

S A V HEARTBEAT 9222  
 MOHNEN JILT 787  
 H A R B WINDY 702 J H  
 MOHNEN JILT 2477  
 HF KODIAK 5R  
 HF ECHO 84R  
 MVF FREIGHTLINER 630T  
 MVF FAVORITE 46T

EPD	BW	WW	YW	Milk	TM	ACC	BW	WW	Feb 6 YW
0.9	55	102	29	57	81	759	1280		

Growth and performance calf out of a Hamilton's Tiger 5T cow. Two years using Mohnen Pulse and I must say, a calve ease bull for our heifers but his progeny make it to the top for weaning. Great muscle expression and count on Tiger daughters for unprecedented maternal strength.



**Mohnen Pulse 533**



# SWAN HILLS...

**Lot 52**



## SHR Pulse 69E

Lot 52      2007139      SHRX 69E      31/01/2017      Male

MOHNEN HEARTRATE 1751  
**MOHNEN PULSE 533 1806334**  
 MOHNEN JILT 2360

SHR CAMARO 20Z  
**SHR TIBBIE 12B 1940702**  
 MVF TIBBIE 38Z

S A V HEARTBEAT 9222  
 MOHNEN JILT 787  
 H A R B WINDY 702 J H  
 MOHNEN JILT 2477  
 S A V CAMARO 9272  
 MVF TIBBIE 22P  
 MVF PIONEER 95X  
 MVF TIBBIE 175X

EPD	BW	WW	YW	Milk	TM	ACC	BW	WW	Feb 6 YW
1.0	56	97	27	55			79	824	1180

Pulse calf offering maternal strength and calving ease. Looking back into the pedigree you will see the maternal cow family, MVF Rosebud which needs no introduction. Maternal strength and milk, the fine ingredients to wean heavy calves at fall time!

**Lot 53**



## SHR Pulse 72E

Lot 53      2007142      SHRX 72E      01/02/2017      Male

MOHNEN HEARTRATE 1751  
**MOHNEN PULSE 533 1806334**  
 MOHNEN JILT 2360

RING CREEK BIG PAYOUT 41Z  
**SHR MAYFLOWER 6B 1945765**  
 MVF MAYFLOWER 291X

S A V HEARTBEAT 9222  
 MOHNEN JILT 787  
 H A R B WINDY 702 J H  
 MOHNEN JILT 2477  
 CONNEALY CONSENSUS 7229  
 LADY OF RING CREEK 10W  
 MVF VRD DATELINE 34P  
 MVF MAYFLOWER 114H

EPD	BW	WW	YW	Milk	TM	ACC	BW	WW	Feb 6 YW
0.2	53	96	25	52			81	784	1150

Pulse has been our "go to" sire used on heifers for the past two years. Look to Pulse to calve easy and then wait until fall to see those calf weaning weights surface to the top! VRD Dateline and MVF Mayflower on the bottom side ensure maternal qualities.

**Lot 54**



## SHR Navigator 61E

Lot 54      2007136      SHRX 61E      30/01/2017      Male

MUSGRAVE AVIATOR  
**SHR NAVIGATOR 3C 1870627**  
 PM ROSEBUD 24'13

PEAK DOT UNANIMOUS 523A  
**SHR ROSEBUD 4C 1875077**  
 EASTONDALE ROSEBUD 34'13

KOUPALS B&B IDENTITY  
 MCATL FOREVER LADY 1429-138  
 TC ABERDEEN 759  
 HF ROSEBUD 103Y  
 VISION UNANIMOUS 1418  
 QUEEN OF PEAK DOT 619U  
 KA BLACK CEDAR 290  
 MWC ROSEBUD 34W

EPD	BW	WW	YW	Milk	TM	ACC	BW	WW	Feb 6 YW
2.6	73	118	30	67			81	942	1450

61E is a SHRX Navigator son sired by our high seller in last year's sale to SEMEX International for the England market. Here's a calf which stood strong beside his 1250 lbs. mother at 980 lbs. in the Harvest Showdown Futurity Grand Champion Pen of Cow/Calf Pairs. Halter broke and shown by Parker at 4H.

## SHR Navigator 62E

Lot 55      2007138      SHRX 62E      31/01/2017      Male

MUSGRAVE AVIATOR  
**SHR NAVIGATOR 3C 1870627**  
 PM ROSEBUD 24'13

S A V PIONEER 7301  
**SHR TIBBIE 6C 1870628**  
 MVF TIBBIE 323X

KOUPALS B&B IDENTITY  
 MCATL FOREVER LADY 1429-138  
 TC ABERDEEN 759  
 HF ROSEBUD 103Y  
 S A V FINAL ANSWER 0035  
 S A V BLACKBIRD 5297  
 MVF VRD DATELINE 23P  
 MVF TIBBIE 20S

EPD	BW	WW	YW	Milk	TM	ACC	BW	WW	Feb 6 YW
3.4	57	98	24	53	83	772	1120		

62E was raised by Martina's show cow which travelled throughout Alberta and Saskatchewan and competed as a heifer calf at Synergy. Moderate in frame (1350 lbs.) and backed by the famous S A V Pioneer and the famous Tibbie cow 52F. This pair was also part of the Grand Champion Pen at the Harvest Showdown.



## SHR Windy 29E

Lot 56      2007147      SHRX 29E      17/02/2017      Male

EASTONDALE REALLY WINDY 06'13  
**EASTONDALE 6A WINDY 505 1884521**  
 EASTONDALE DUCHESS 110'13

VISION UNANIMOUS 1418  
**SHRX ZARA LISA 1B 1809098**  
 MVF ZARA LISA 13Z

V D A R REALLY WINDY 4097  
 EASTONDALE ANNIE K 60'11  
 EASTONDALE ALL THE WAY 11'08  
 KBJ DUCHESS 175U  
 VISIONTOPLINE ROYAL STOCKMAN  
 VISION EDELLA 665  
 HF TIGER 5T  
 MVF ZARA LISA 162X

EPD	BW	WW	YW	Milk	TM	ACC	BW	WW	Feb 6 YW
-0.6	58	95	23	52	68	714	1085		

29E is out of a Unanimous daughter which surfaced to the top at Agribition 2015 in the heifer championship round. 1B exhibits modern frame and loads of milk. Sired by the Lot 1 bull purchased from the Eastondale Angus Bull Sale. Eastondale 6A Windy 505 boasted the highest indexing and highest ADG in their offering at the 2016 sale. An interesting calf with an outcross pedigree.



## SHR Really Windy 31E

Lot 57      Applied For      SHRX 31E      24/02/17      Male

EASTONDALE REALLY WINDY 06'13  
**EASTONDALE 6A WINDY 505 1884521**  
 EASTONDALE DUCHESS 110'13

SANKEYS LARAMIE 114  
**EASTONDALE QUEEN MOTHER 105'14 1789224**  
 EASTONDALE QUEEN MOTHER 28'06

V D A R REALLY WINDY 4097  
 EASTONDALE ANNIE K 60'11  
 EASTONDALE ALL THE WAY 11'08  
 KBJ DUCHESS 175U  
 SANKEYS LAZER 609 OF 6N  
 LAFLINS GEORGINA OF 6N 614  
 B.B.A.R HERO 1267  
 EASTONDALE QUEEN MOTHER 90F

PE	BW	WW	YW	Milk	TM	ACC	BW	WW	Feb 6 YW
EPD	2.3	50	87	25	50	74	622	1130	

Moderate framed calf with a combination of Eastondale breeding on both sides of the pedigree. Sankeys Laramie daughter and Windy combination. 105B was the high selling heifer in the 2015 Eastondale Spring Bull Sale and has earned her way to becoming a great producing female at Swan Hills Ranch.



# SWAN HILLS...

Lot 58



## SHR International 79E

Lot 58      2007151      SHRX 79E      03/03/2017      Male

SA V HARVESTOR 0338  
**SA V INTERNATIONAL 2020 1724665**  
 SA V EMBLYNETTE 5483

SA V PIONEER 7301  
**MVF GEORGINA 110X 1550239**  
 MVF GEORGINA 97P

SA V HERITAGE 6295  
 SA V EMBLYNETTE 7749  
 SA V 8180 TRAVELER 004  
 SA V EMBLYNETTE 7260  
 SA V FINAL ANSWER 0035  
 SA V BLACKBIRD 5297  
 B/R NEW FRONTIER 095  
 MVF GEORGINA 17J

EPD	BW	WW	YW	Milk	TM	ACC	BW	WW	Feb 6 YW
5.1	64	109	23	55	90	816	1220		

An SA V International son out of our front pasture, MVF SAV Pioneer daughter. Proven genetic power on the top side combined with the "well known" MVF Georgina cow family make this bull calf your next herdsire prospect.

Lot 59



## SHRX 83D

Lot 59      Applied For      SHRX 83D      12/08/2016      Male

SA V BEST INTEREST 0136  
**J SQUARE S BEST INTEREST 327A 1749540**  
 SOO LINE STAR MAIDEN 1067

SITZ UPWARD 307R  
**MVF TIBBIE 25X 1550285**  
 MVF TIBBIE 22P

SA V BISMARCK 5682  
 SA V EMBLYNETTE 8172  
 SOO LINE YELLOWSTONE 6344  
 SOO LINE STAR MAIDEN 9075  
 CONNEALY ONWARD  
 SITZ HENRIETTA PRIDE 81M  
 VERMILION DATELINE 7078  
 MVF TIBBIE 28C

PE	BW	WW	YW	Milk	TM	ACC	BW	WW	Feb 6 YW
EPD	1.4	53	94	25	52	68	862	1425	

A powerhouse calf with a stacked pedigree out of donor MVF 25X, raised the high selling bull for Parkwood Farms in last year's sale and 83D is a half brother to him. 25X progeny has now reached into Northern England, Russia, China and France. Look for 25X's progeny to give you small calves at birth, 62 lbs. and 75 lbs. and exhibit explosive growth leading up to weaning.

MVF Tibbie 25X  
 Dam to Lot 59



Parker and his buddies doing chores.  
 At Swan Hills Ranch,  
 everybody works!

## SHR Best Interest 38E

Lot 60      2007152      SHRX 38E      06/03/2017      Male

S A V BEST INTEREST 0136  
**J SQUARE S BEST INTEREST 327A 1749540**  
 SOO LINE STAR MAIDEN 1067

TGA BLACKMAN 8311U  
**NORTHERN VIEW RUTH 89Y 1623545**  
 NORTHERN VIEW RUTH 92U

S A V BISMARCK 5682  
 S A V EMBLYNETTE 8172  
 SOO LINE YELLOWSTONE 6344  
 SOO LINE STAR MAIDEN 9075  
 GEIS BLACKMAN 224'05  
 TGA MS DELEGATE 3145N  
 NORTHERN VIEW QUANTUM 82R  
 CRESCENT CREEK RUTH 6F

EPD	BW	WW	YW	Milk	TM	ACC	BW	WW	Feb 6 YW
1.4-	58	101	20	49	83	763	1145		



J Square S **Best Interest** 327A - Sire of Lot 60

## SHR Revere 45E

Lot 61      2007155      SHRX 45E      15/03/2017      Male

S A V REVERE 1180  
**SHR REVERE 127B 1821019**  
 BH ECHO 1Y

MVF NET WORTH 113T  
**MVF GEORGINA 324X 1550263**  
 MVF GEORGINA 85P

S A V 707 RITO 9969  
 A C DUKE GIRL 57  
 HF TIGER 5T  
 HF JUNE 55W  
 S A V NET WORTH 4200  
 MVF ROSEBUD 906N  
 NICHOLS EXTRA H6  
 MVF GEORGINA 14M

EPD	BW	WW	YW	Milk	TM	ACC	BW	WW	Feb 6 YW
1.4	37	71	24	42	75	590	1040		



**Lot 61**



Martina and Robyn passing on their skills to tomorrow's youth



Parker and his Grand Champion steer

# SWAN HILLS... Percentage Bulls - 3/4 ANGUS 1/4 SIMMENTAL

Lot 62



## SHR Best Interest 34E

Lot 62 Applied For SHRX 34E 06/02/2017 Male

S A V BEST INTEREST 0136  
**J SQUARE S BEST INTEREST 327A 1749540**  
 SOO LINE STAR MAIDEN 1067

S A V BISMARCK 5682  
 S A V EMBLYNETTE 8172  
 SOO LINE YELLOWSTONE 6344  
 SOO LINE STAR MAIDEN 9075

Dam: SHRX 21Y - 1/2 SIMMENTAL 1/2 ANGUS

ACC	BW	WW	Feb 6 YW
	82	638	1155

A mid-framed Best Interest grandson with loads of thickness and hip. A full brother to 34E sold to Darren Keown in his commercial cross-breeding program. Look to 34E to give you muscle and hip in his progeny with heterosis playing its part!

Lot 63



## SHR Best Interest 37E

Lot 63 Applied For SHRX 37E 05/03/2017 Male

S A V BEST INTEREST 0136  
**J SQUARE S BEST INTEREST 327A 1749540**  
 SOO LINE STAR MAIDEN 1067

S A V BISMARCK 5682  
 S A V EMBLYNETTE 8172  
 SOO LINE YELLOWSTONE 6344  
 SOO LINE STAR MAIDEN 9075

Dam: SHRX 33Z - 1/2 SIMMENTAL 1/2 ANGUS

ACC	BW	WW	Feb 6 YW
	74	702	1135



Martina competing at the 2017 BMO Canadian Beef Extreme at Agribition last fall



Robyn competing in the Angus show at Agribition 2017



# ANGUS INFLUENCE COMMERCIAL HEIFERS...

## Lot 64 and 65 - **Two Pens Of Three**

---

---

Consigned by:

**Dale Minhinnick**

Box 31 Invermay, SK S0A 1M0

Cell-306-593-7866

## Lot 66 - **Pen Of Five**

---

---

Consigned by:

**Jeff & Sheri Davis**

Box 1474 Roblin, MB R0L 1P0

1-204-207-0104

## Lot 67 - **Pen Of Five**

---

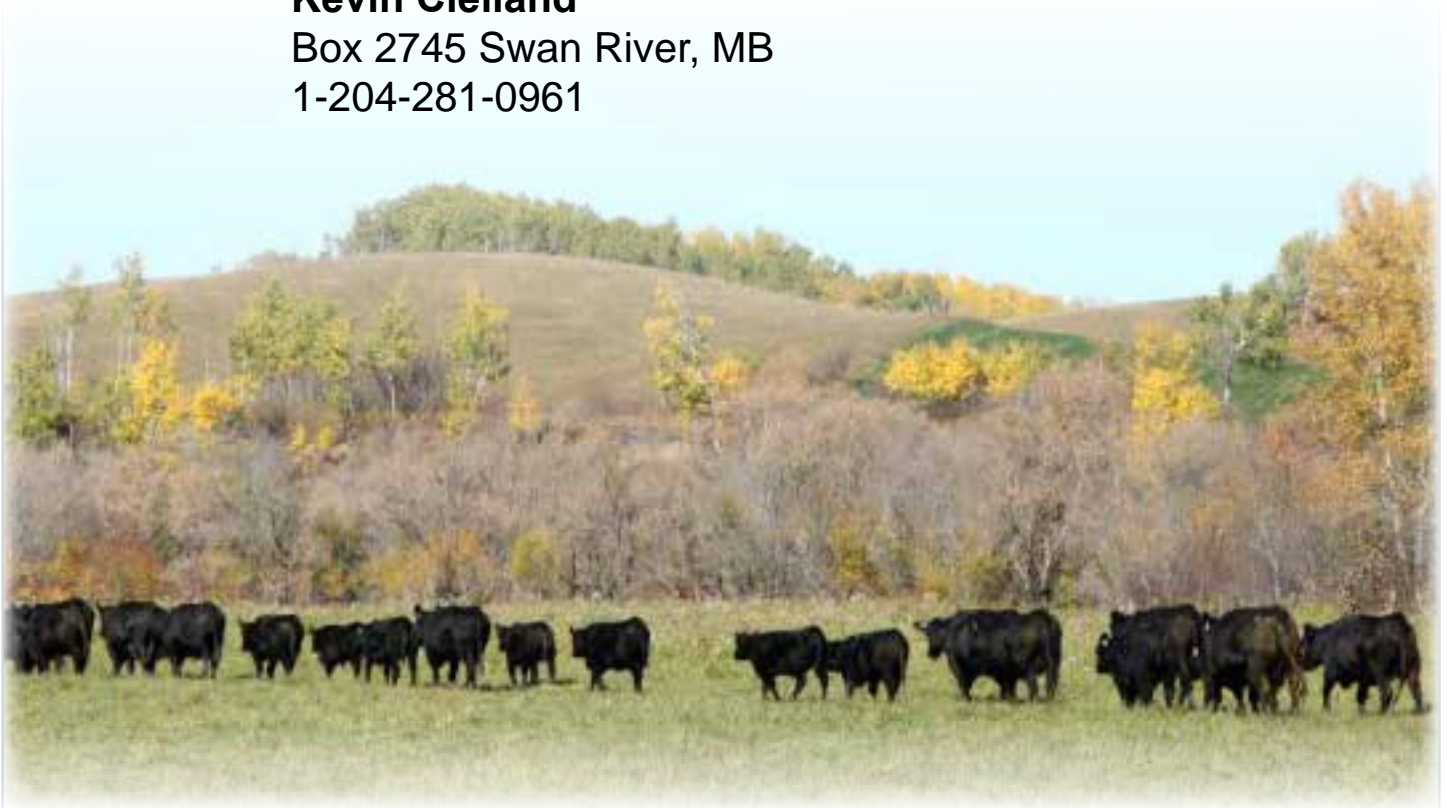
---

Consigned by:

**Kevin Clelland**

Box 2745 Swan River, MB

1-204-281-0961



# YORKTON HARVEST SHOWDOWN 2017 CHAMPIONS...



## Swan Hills Ranch

### Champion Pen Of 3 Cow-Calf Pairs

Judge Brian McCarthy presenting champion pen of three cow-calf pairs at the 2017 Yorkton Harvest Showdown.

Two of the bulls are in the 12th Annual Blue Collar Sale.





# ON THE HORIZON

**THERE'S *NOTHING* LIKE THE PROMISE OF A NEW SEASON**

From top-quality Proven® Seed forages to grazing and silage corn to livestock handling equipment – we're with you. So much riding on your farm, so many ways to profit from our experience. **BRING IT ON**

[cpsagu.ca](http://cpsagu.ca)



CPS Yorkton

CPS Theodore

CPS Canora

CPS Swan River

CPS Melville

CPS Lemberg

Proven® Seed is a registered trademark of Crop Production Services (Canada) Inc. CPS CROP PRODUCTION SERVICES and Design is a registered trademark of Crop Production Services, Inc. 02/17

PLANT NUTRITION | SEED | CROP PROTECTION | FUEL | STORAGE & HANDLING | ECHELON





**PRAIRIE CO-OP** is dedicated to help **GROW, FUEL, EQUIP, BUILD** and **FEED** your farm. With knowledgeable staff and exceptional products, Prairie Co-op has a location to serve your farm's needs.

For **PETROLEUM** call:

- Melville — 306.728.5811
- Cupar — 306.723.4428
- Lipton — 306.336.2333
- Kelliher — 306.675.2156
- Ituna — 306.795.2441
- Lemberg — 306.335.2461

For **SEED, FERTILIZER** and **CHEMICAL** call:

- Cupar — 306.723.1200
- Strasbourg — 306.725.3200
- Kelliher — 306.331.0552
- Lipton — 306.336.2333

For **HOME CENTRE, LUMBER** and **FEED** call:

- Melville — 306.728.4461
- Fort Qu'Appelle — 306.332.0111
- Ituna — 306.795.2441
- Lipton — 306.336.2333
- Cupar — 306.723.4428
- Kelliher — 306.675.2156
- Lemberg — 306.335.2461

For **AG EQUIPMENT** call:

- Cupar — 306.723.1200
- Lipton — 306.336.2333
- Ituna — 306.795.2441
- Melville — 306.728.5811
- Strasbourg — 306.725.3200

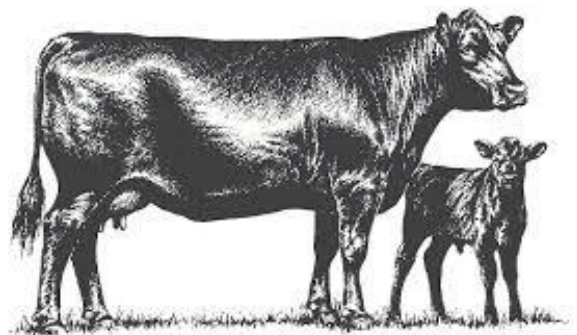


# SPONSORS...

## Hackman Feeds

Calving time is here, see Hackman Feeds for all your supplies. We have colostrum, scour guard vaccines, scour boluses, diatomaceous earth, medicated calf ration, milk replacer, e cell, electrolytes, vitamins and calf span. We have a variety of loose minerals and tubs to get your cows and bulls ready for breeding season.

Call us at (306) 786-7713  
385 5 Avenue North Yorkton, SK S3N 2Z9, Canada



### **Fred Lowenberger**

Product Specialist

#### **Future Ford**

166 Service St., Highway 10 North  
Melville, SK S0A 2P0  
Cell: (306) 730-7969  
Bus: (306) 728-5457  
Fax: (306) 728-4957  
Sales: 1-855-910-6230



Visit us on line at :  
[www.futureford.ca](http://www.futureford.ca)

Follow us on:  
[www.facebook.com/Melville-Future-Ford](http://www.facebook.com/Melville-Future-Ford)  
[@FutureFord2017](https://twitter.com/FutureFord2017)



# SPONSORS...

## Friendly Acres Seed Farm

Robert & Kevin Elmy

306-744-2779 or 744-2332

[www.friendlyacres.sk.ca](http://www.friendlyacres.sk.ca)

Twitter @KevinElmy



---

Your forage, corn, soybean, and cover crop seed provider

---

Forage Seed: Alfalfa, Clovers, Cicer Milk Vetch, Sainfoin, Wheatgrasses, Bromes, Timothy, Orchardgrass, Fescues, Wild Rye

Cover Crops: Brassicas, Broadleaf, Legumes, Grasses

Warm and cool season species

Custom blending. We do blends to fit your needs, seeded at the right rate.

### **Corn**

We trialed what we sell so we know what the cows like. They don't like all corn varieties. We have RR, Enlist, conventional, & organic varieties available.

Canamaize - 440 (conventional)

Dow Seeds - DS80A27, TMF 86H77, TMF91Q25, BMR 90B94

De Dell Seeds - full line of conventional varieties

[www.horizoncu.ca](http://www.horizoncu.ca)

Branches in:

Melville	306-728-5425
Grayson	306-794-2155
Grenfell	306-697-2803
Neudorf	306-748-2255
Wolseley	306-698-2252



**HORIZON**  
CREDIT UNION  
*Today, Tomorrow, Together*

**See us for all your financial needs.**

Proudly Supporting the Communities We Serve



P.O. Box 1030  
Highway #10 East  
Yorkton, SK S3N 2X3  
[www.yorktonnewholland.com](http://www.yorktonnewholland.com)



**Brad Guenther**  
General Manager

Bus: 306.783.8511  
Fax: 306.782.5595  
Cell: 306.621.7978  
Email: [brad@yorktonnewholland.com](mailto:brad@yorktonnewholland.com)

*In Partnership with Raymore and Watrous New Holland*

# SPONSORS...

## PILLER SERVICE LTD.

AG, SEMI & AUTO REPAIR & PARTS  
MOBILE SERVICE, MOBILE WELDING  
AIR CONDITIONER REPAIRS  
PHONE 306.748.4800 CELL 306.222.6675  
FAX 306.784.4801  
HIGHWAY #22 EAST  
BOX 329, NEUDORF, SK S0A 2T0

## BIEBER TRUCKING

Duff, Saskatchewan  
306-728-4999 or 306-728-7854  
Congratulations on your 12th Annual  
Blue Collar Bull Sale



DERRYL W. ZENKEWICH  
Box 24  
Ituna, SK S0A 1N0

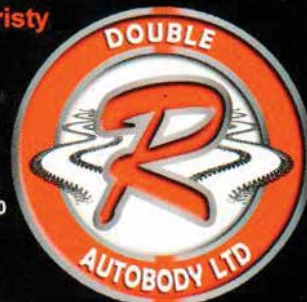
Tel: 306-795-2234  
Cell: 306-795-7607  
Fax: 306-795-3453

### Rob Graff & Rachael Yuristy

Bodyshop Owners

Phone: 306-728-4565  
Cell: 306-730-6775  
Fax: 306-728-3493  
Email:  
bodyshop@doublerautobody.com  
SGI DIAL-A-CLAIM: 1-800-667-1480

1231 Queen Street  
Box 3509  
Melville, SK S0A 2P0



"We meet the nicest people by accident!"

## E & H Redi-Mix

Agri-Park Road - Melville  
306-728-5626  
ehredimix@hotmail.com



- Redi-Mix Concrete
- Excavating • Gravel
- Insulated Concrete Forms

Herb Schick

Glen Schick  
306-730-7775

Elmer Schick



Darren Wandy  
Owner

Tel: (306)728-4550  
Cell: (306)521-0429

Email: d\_wandy@hotmail.com

Specializing In Livestock Fencing Solutions

# SPONSORS...

**Roundup**  
**BUTCHER SHOP**

*Custom Meat Processing & Sausage Making*

Laurel Wiebe

Box 175  
Bredenbury, SK  
S0A 0H0

Phone: 306-898-2255  
Fax: 306-898-2252

email: roundupbutchershop@gmail.com

**J-MACK Sandblasting**  
A Division of J-MACK Painting Ltd.

PO Box 22039  
Yorkton, SK  
S3N 4B2  
306.621.8442  
info@j-mackpainting.ca



**FARRELL**  
**AGENCIES LTD.**

 Bus: (306) 783-4477 Fax: (306) 786-7577  
Toll Free: 1-800-268-3675

Website: www.farrellagencies.com  
email: farrellagencies@sasktel.net

*Committed to You & Your Community*

**MNP**  
LLP

**Brian G. Loos**  
Agricultural and Business Advisor

Box 2590  
2424 Westwood Drive  
Humboldt, SK S0K 2A0

P: 306.682.2673 ext. 7554  
C: 306.621.9099  
F: 306.682.5910  
E: brian.loos@mnp.ca

MNP.ca

ACCOUNTING > CONSULTING > TAX

**Hitching Post**

Tom Walsh

17 Betts Avenue  
Yorkton, SK  
S3N 1M1

Phone: (306) 783-5629  
Fax: (306) 783-4629  
Email: hitchingpost@sasktel.net

www.hitchingpostyorkton.ca

**MK HOLDINGS INC.**  
HAIL INSURANCE AGENT

**JIM MORRISON**

HOME: (306) 783-5980  
CELL: (306) 621-7873



# SPONSORS...

## GOLLY'S TRENCHING

PO Box 11  
GOODEVE, SK S0A 1C0

- COMPLETE WATER SEPTIC SYSTEM
- BACKHOE SERVICE
- DIRT AND GRAVEL HAULING - END DUMP TRAILER
- PAYLOADER WORK



**JLL**  
*Photography*

Jenna Loveridge  
Melville Sk.  
(306) 728-3823 or (306) 730-8478  
jllangus@live.com  
www.jlllivestock.com

AgraTactics Agronomy



806-788-2767

25 Myrtle Ave.  
Yorkton, SK  
S3N 4G5

## Yorkton Ag & Auto Supply

Bryce & Della Arnold  
Owners / Operators

Box 100 • 552B Broadway St. East  
Windsor Centre - Hwy. #10 East  
Yorkton, Saskatchewan S3N 2V6

**(306) 782-1434**  
Fax: (306) 783-1415

C.E.T.A. Certified E.T. Facility | Donor Housing | Recipients Available



**SWAN VALLEY**  
VETERINARY CLINIC

**Dr. Keith Immerkar, D.V.M.**

Box 388, Highway 10 East  
Swan River, MB R0L 1Z0  
f: 204.734.9530  
c: 204.734.0720  
t: 204.734.4565

[swanvalleyvetclinic.com](http://swanvalleyvetclinic.com)



**Kelvin Hawreliuk**

Box 32  
Sheho, SK  
S0A 2T0  
306-269-7323  
E-mail: [fasthorses@sasktel.net](mailto:fasthorses@sasktel.net)

**Genex Cooperative, Inc.**

A Subsidiary of Cooperative Resources International

# **NOTES...**

---

---

---

---

---

---

---

---

---

---

---

---

---

---

---

---

---

---

---

---

---

---

---

---

# TERMS AND CONDITIONS

## Breeding Guarantee

All cattle are sound and right, and all with a responsible breeder guarantee of satisfaction. In the event of any unlikely dispute, the regular terms and conditions, standard with the Canadian Angus Association shall apply.

## Warranty

Blue Collar consignors guarantee to sell you a bull that is structurally sound and has passed a semen test performed by a licensed veterinarian. Should the bull fail to perform as a satisfactory breeder (unable to service cow or heifer) he will be replaced with a bull of equal value. If this is not possible an adjustment will be made to reflect the value of the bull or a credit will be given towards the purchase of another bull. We guarantee to provide you with a breeding bull for the season. We will not however provide replacement or adjustment for death, physical injury or mismanagement. Claims must be made by September 1 of year of purchase. With this in mind, we cannot stress enough the importance of insurance on your bull purchases.

## Insurance

Insurance agents will be available sale day, or you can make other insurance arrangements through your own agent. Insurance must be purchased on all bulls that return to the respective farms.

## Sight Unseen Program

Tell us your requirements and we'll select bulls that meet those orders. If you are not 100% satisfied when the trailer is in your yard, you don't own him, no questions asked.

## Delivery

The Blue Collar Bull Sale Group will assist with delivery wherever possible. Receive a \$50 discount on your bull purchase if you take your bull home the day of or the day after the sale. Free delivery on bulls purchased within a 100 mile radius. Over 100 mile radius, delivery and cost to be worked out between the buyer and the individual consignor to the sale. Bulls returned to the consignor's farm must be insured. The buyer then assumes full responsibility for the bull. Proper care and attention will be given to all bulls returned to the farm. Bulls returning to the consignor's farm will be kept at no charge until May 1 with a cost of \$2/day after May 1. We would ask that the buyers work with us to have all bulls delivered prior to June 1.

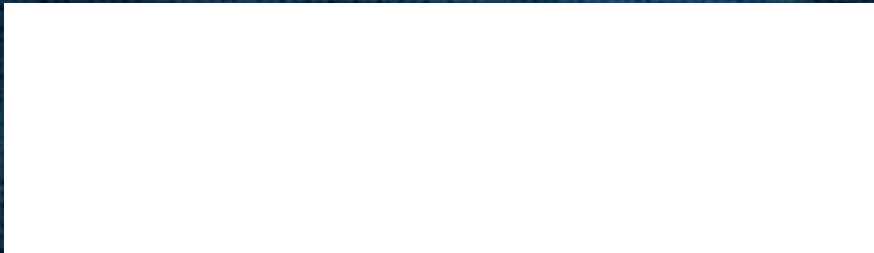
## Terms of Sale

Cash or cheque at par, payable to clerks of the sale on sale day, unless prior arrangements have been made. No release will be given until satisfactory settlement has been made.

\*\* All persons who attend the sale do so at their own risk and the owners, sale management and sale staff assume no liability, legal or otherwise, for property loss or for any accidents that may occur.



BLUE COLLAR BULL SALE  
C/O BOX 211  
NEUDORF, SK  
S0A 2T0



Lot 15



Lot 24



Lot 27



Lot 33



Lot 49



Lot 59

PLEASE BRING THIS CATALOGUE WITH YOU TO THE SALE