

22nd Annual

TOOLS OF THE TRADE

Bull & Female Sale

WEDNESDAY MARCH 15, 2017 - 1:00 PM
HELD AT THE RANCH NEAR DUNDURN, SK



Tools of the Trade

ANGUS BULL SALE

WEDNESDAY, MARCH 15, 2017 1:00 P.M.

AT THE FARM, NEAR DUNDURN, SK

SELLING 117 HEAD

60 Red & Black Angus Yearling Bulls

12 Red & Black Angus Open Heifers

45 Commercial Open Heifers

SALE DAY PHONES...

Bryan Willms 306.492.7504

Tracey Willms 306.380.6772

Sale Barn 306.492.2161

Garth Radchenko 306.880.3880

SALE STAFF..

Chris Poley, Auctioneer - T Bar C Cattle Co. Ltd.

306.220.5006

Nate Marin, Ringman

306.869.7130

Shane Michelson, Ringman - T Bar C Cattle Co. Ltd.

403.363.9973

Shane Castle, Castlerock Marketing

306.741.7485

Devin Warrilow, Castlerock Marketing

780.581.4329

Scott Bohrson, Bohrson Marketing

403.370.3010

Martin Bohrson, Bohrson Marketing

306.220.7901

INSURANCE PROVIDED BY...

Brightwater Insurance, Michelle Matycio

306.227.3117

PHOTOGRAPHY...

Grant Rolston Photography

403.593.2217

View the bulls & heifers any time at the farm.

Visitors always welcome!



Bryan, Tracey Willms & Family

Box 176, Dundurn, SK S0K 1K0

P: 306-492-2161

(Bryan) C: 306-492-7504

(Tracey) C: 306-380-6772

E: wilbarcattle@gmail.com

www.wilbarcattle.com

Raising Registered Angus Since 1963

Can't make it to the sale?

Internet Bidding Available.

To view this sale visit www.dlms.ca. Fill out the registration form located under registration and sign-up for your free user account and select a username and password.

BIDDERS - To be approved as a bidder, Log in to dlms.ca and click BUYER APPROVAL tab, select the sale you are interested in bidding at and click sign up.

For more information
Call DLMS Reps:

Whitney Bosovich 780.991.3025

Mark Shologan 780.699.5082

DLMS
www.dlms.ca

Welcome from Wilbar Cattle Co.



Bryan, Tracey, Kylie & Owen

Welcome to the 22nd Annual Tools of the Trade Sale! As always, our focus continues to be raising cattle that work for both the commercial and purebred cattlemen. We are proud of the longevity, soundness, performance and maternal strength of our herd. The average age of the dams of these bulls is 5 ½. What that tells me is that we have foundation cows, producing into the double digits, and young cows measuring up early in life. As you look through the offering, you'll note many maternal connections and prolific cow families. We are proud to walk most of the herd sires represented in this offering.

We are very proud to offer what we feel is one of the strongest sets to date. In the black pen, you'll find larger groups of half brothers out of Contender & Capacity – both bulls we successfully showed as 2 year olds. The Cash sons represent new genetics for our herd and bring extra bone, hair and stoutness. Aviator sired low birth, calving ease, attractive sons that offer a fresh pedigree for most of our customers.

The red pen is stronger than ever. The Specialist calves are true herd sire prospects – big spread from birth to yearling, strong maternal traits and exceptional style. Large groups of half brothers come from veteran herd sire Speed and new addition Indeed. These 2 sires are half brothers themselves. Foot structure, style, muscle shape and hair are traits of both groups.

A select group of purebred heifers will also be offered. Look to these heifers to add useful, reliable, productive genetics to your herd.

We have an increased offering of commercial heifers for 2017. This is a strong group of replacement heifers. They will be sorted into straight Angus/Red Angus pens and Angus/Red Angus X Simmental pens of 5. We do not retain any heifers out of our commercial program – we offer them all on sale day!

If you are unable to make it on sale day, internet viewing & bidding will be provided by DLMS. Be sure to register & log in before sale time. As always, we, or any of our sale staff, would be pleased to help you!

Ultrasound, scrotal measurements and current weights will be provided on sale day or ahead of time upon request.

Visitors are always welcome! We would be pleased to help you select your next herd sire and have a look through the cow herd.

Please join us for coffee in the morning. Lunch will be served at 11:30 a.m. and the sale will start at 1:00 p.m. Your continued interest and support of our program is truly appreciated. See you on the 15th!

Bryan, Tracey, Kylie & Owen

From The Desk At T Bar

Four generations ago, Jake and Bernice started a tradition at Wilbar Farms... an Angus tradition. In those early years Angus was not the most popular or largest breed but these pioneers were cornerstone builders, in addition to building the great Wilbar herd of Angus... now red and black.

"Tools of the Trade" has also become a tradition, where each year producers, both purebred and commercial, have the opportunity to select from some of the finest Angus seed stock available in the industry. The sale lineup is selected out of a large, highly productive herd of brood matrons with even a larger gene pool. The varied base of repeat customers has grown accustomed to selecting from new genetics.... loaded with a high degree of predictability.

This spring's lineup is uniform and powerful... bulls with lots of butt, hair, testicles and performance. Whether you are looking to add a sire on heifers or a power bull for your cows, there is a great group to choose from. The females selling are paternal sisters to the bulls and have been selected from replacements representing different families.... and opportunity to start your own "Wilbar Cow Family!"

Plan to be with us for another tradition..."Tools of the Trade" and fill up on your breeding needs.

If we may be of assistance prior to or sale day, feel free to call any of the T Bar Team or myself; we are willing to assist you in a professional, confidential manner.

Chris Poley



Chris Poley: 306-220-5006



WILBAR *Contender* 531B



EPDS	
BW	3.4
WW	4.7
YW	80
MM	20
TM	44
CE	1.3
MCE	4.2
STATS	
BW	82
AWW	780
AYW	1284
AOD	XX
CE	XX

15/02/2014
WJD 531B
1815871

S A V NET WORTH 4200
BAR-E-L UNFORGIVEN 102U
BAR-E-L MAGNOLIA 143K

DUFF ENCORE 702
WILBAR JENNIFER 215X
WILBAR JENNIFER 813U

This is an exceptional first calf crop from Contender to highlight our bull sale. His mass and stature are impressive along with an overall abundance of depth and volume from all angles. He moves fluidly with a presence that catches attention. We hope he will carry on his sire's legacy of performance oriented cattle and exceptional maternal power. His sons are big bodied, full of muscle expression, perfect feet and an abundance of hair. They are also very gentle natured making them easy to handle. The Jennifer cow family will ensure that his daughters are very productive and will have superior udders that will contribute to their longevity.



WILBAR *Capacity* 99Z



EPDS	
BW	2.0
WW	40
YW	76
MM	19
TM	39
CE	6.0
MCE	9.0
STATS	
BW	88
AWW	749
AYW	1395
AOD	XX
CE	XX

05/03/2012
WJD 99Z
1701337

S A V 004 CAPACITY 5234
PEAK DOT CAPACITY 601W
LADY OF PEAK DOT 521M

SANDY BAR ADVANTAGE 43M
WILBAR GEORGINA 17P
WILBAR GEORGINA 706M

Capacity is our go-to bull for adding attractive style, length of body and overall pay-weight. His sons are consistently big performers coming off grass and continue on test. They carry on the same presence and eye appeal. His daughters in production have sound udder quality and are the functional type that will stay in the herd for many years.



KR Cash 4120

EPDS	
BW	3.3
WW	56
YW	112
MM	21
TM	49
CE	5.0
MCE	12
STATS	
BW	N/A
AWW	N/A
AYW	N/A
AOD	N/A
CE	N/A



05/02/2014
IMP 4120B
 1875331

SITZ DASH 10277
BARSTOW CASH
 BARSTOW QUEEN W16

WK VEGAS
WK CANDY 9554
 BELMONT CANDY 6578 3190

Cash was added to our bull battery from the famous Krebs Ranch in Nebraska. He was discovered at the Denver Stock Show where he was a member of the Champion Pen of 3 bulls in 2015. Progeny out of this Barstow Cash son pound down the scale at weaning and again at yearling. They are extremely hairy and stand on an ideal hoof with loads of heel. Look to the Cash sired bulls to offer fresh outcross genetics to our sale offering with many other characteristics we think you'll like.



PM Aviator 19'14

EPDS	
BW	-1.7
WW	43
YW	83
MM	25
TM	46
CE	13
MCE	12
STATS	
BW	80
AWW	788
AYW	1260
AOD	XX
CE	XX



02/02/2014
FIRE 19B
 1787875

KOUPALS B&B IDENTITY
MUSGRAVE AVIATOR
 MCATL FOREVER LADY 1429-138

HF TIGER 206X
POPLAR MEADOWS BLOSSOM 92'12
 POPLAR MEADOWS BLOSSOM 5'08

SIRE OF
 AVIATOR

Musgrave Aviator has become a household name amongst Angus breeders. He became famous for his spread type genetics – light birth weights, rapid growth to weaning and moderate mature frame. We'd say this son did just that. If you are in need of a sure fire heifer bull that can still add some shape and muscle to his calves then grab one of these Aviator sons. Aviator came to us via the Poplar Meadows herd in BC.



WILBAR *Capacity* 2D

10/01/2016

1911342

WJD 2D

PEAK DOT CAPACITY 601W

WILBAR CAPACITY 99Z

WILBAR GEORGINA 17P

BLACK WHEEL TERMINATOR 43R

WILBAR LUCY 53W

WILBAR LUCY 62P

EPDS	BW	WW	YW	MM	TM	CE	MCE
	2.7	41	74	18	40	5.0	8.0

STATS	BW	AWW	AYW	AOD	CE
	88	751	1296	7	*



WILBAR *Dimension* 3D

15/01/2016

1911343

WJD 3D

PEAK DOT CAPACITY 601W

WILBAR CAPACITY 99Z

WILBAR GEORGINA 17P

WILBAR TIMEX 248X

WILBAR RUBY 147Z

WILBAR RUBY 57W

EPDS	BW	WW	YW	MM	TM	CE	MCE
	1.8	34	60	23	43	5.0	8.0

STATS	BW	AWW	AYW	AOD	CE
	82	732	1186	4	**



WILBAR *Contender* 12D

19/01/2016

1911352

WJD 12D

BAR-E-L UNFORGIVEN 102U

WILBAR CONTENDER 531B

WILBAR JENNIFER 215X

FIGURE 8 ANGUS TOM BOY 509R

LOOKOUT OAKLEAF 34T

LOOKOUT OAKLEAF 262M

EPDS	BW	WW	YW	MM	TM	CE	MCE
	3.3	36	58	16	36	0.0	4.0

STATS	BW	AWW	AYW	AOD	CE
	89	681	1170	9	*



WILBAR *Contender* 17D



EPDS	
BW	6.3
WW	39
YW	61
MM	20
TM	39
CE	-5.0
MCE	3.0
STATS	
BW	98
AWW	778
AYW	1259
AOD	11
CE	*

21/01/2016
WJD 17D
1911356

BAR-E-L UNFORGIVEN 102U
WILBAR CONTENDER 531B
WILBAR JENNIFER 215X

EARLY SUNSET HIGH TIME 47G
WILBAR PRIDE 256R
WILBAR PRIDE 575L



WILLBAR *Full Capacity* 18D



EPDS	
BW	3.0
WW	36
YW	65
MM	23
TM	43
CE	3.0
MCE	8.0
STATS	
BW	88
AWW	781
AYW	1252
AOD	8
CE	*

21/01/2016
WJD 18D
1911355

PEAK DOT CAPACITY 601W
WILBAR CAPACITY 99Z
WILBAR GEORGINA 17P

WILBAR YELLOWSTONE 940N
WILBAR LUCY 838U
WILBAR LUCY 303K

28D

WILBAR *New Day* 28D



EPDS	
BW	2.7
WW	34
YW	63
MM	23
TM	40
CE	2.0
MCE	4.0
STATS	
BW	84
AWW	688
AYW	1174
AOD	4
CE	**

27/01/2016
WJD 28D
1911363

BOYD NEW DAY 8005
CURRIE NEW DAY 6P
CURRIE MIGNONNE 4J

BAR-E-L UNFORGIVEN 102U
WILBAR LUCY 27Z
PSF LUCY 27M

43D

WILBAR *Capacity* 43D



EPDS	
BW	2.9
WW	40
YW	66
MM	16
TM	37
CE	3.0
MCE	7.0
STATS	
BW	88
AWW	707
AYW	1157
AOD	6
CE	**

02/02/2016
WJD 43D
1911374

PEAK DOT CAPACITY 601W
WILBAR CAPACITY 99Z
WILBAR GEORGINA 17P

BAR-E-L UNFORGIVEN 102U
WILBAR BLACKBIRD 252X
DBRL BLACKBIRD 3R



WILBAR *Contender* 46D



EPDS	
BW	3.9
WW	42
YW	76
MM	13
TM	35
CE	1.0
MCE	4.0
STATS	
BW	92
AWW	719
AYW	1248
AOD	10
CE	*

02/02/2016
WJD 46D
1911375

BAR-E-L UNFORGIVEN 102U
WILBAR CONTENDER 531B
WILBAR JENNIFER 215X

SANDY BAR ADVANTAGE 43M
WILBAR GEORGINA 476S
WILBAR GEORGINA 310K



WILBAR *Cash Out* 53D



EPDS	
BW	3.1
WW	47
YW	95
MM	23
TM	47
CE	3.0
MCE	9.0
STATS	
BW	89
AWW	753
AYW	1326
AOD	5
CE	**

Retaining 1/3
Semen Interest

03/02/2016
WJD 53D
1942473

BARSTOW CASH
KR CASH 4120
WK CANDY 9554

BAR-E-L UNFORGIVEN 102U
WILBAR PRIDE 483Y
WILBAR PRIDE 407K



WILBAR Capacity 54D

04/02/2016 1911379 WJD 54D

PEAK DOT CAPACITY 601W
WILBAR CAPACITY 99Z
 WILBAR GEORGINA 17P

WILBAR HIGH TIME 231R
WILBAR GEORGINA 123W
 WILBAR GEORGINA 706M

EPDS	BW	WW	YW	MM	TM	CE	MCE
	1.1	26	45	19	33	6.0	7.0

STATS	BW	AWW	AYW	AOD	CE
	84	682	1083	7	**



WILBAR Drop Kick 57D

04/02/2016 1911380 WJD 57D

PLAINVIEW LUTTON E102
PLEASANT VALLEY LUTE 1207
 CHERRY KNOLL ELSA 8014

SANDY BAR ADVANTAGE 43M
WILBAR GEORGINA 17P
 WILBAR GEORGINA 706M

EPDS	BW	WW	YW	MM	TM	CE	MCE
	4.6	55	98	26	53	0.0	6.0

STATS	BW	AWW	AYW	AOD	CE
	94	830	1454	12	**



WILBAR Capacity 68D

08/02/2016 1911388 WJD 68D

PEAK DOT CAPACITY 601W
WILBAR CAPACITY 99Z
 WILBAR GEORGINA 17P

M DOUBLE B CHAMPION 31N
KENBERT CHAMPION PRINCESS 47
 KENBERT FAME JODE

EPDS	BW	WW	YW	MM	TM	CE	MCE
	0.8	37	82	13	32	7.0	10

STATS	BW	AWW	AYW	AOD	CE
	78	678	1322	8	***



WILBAR *Rival* 72D

09/02/2016 1911389 WJD 72D

BAR-E-L UNFORGIVEN 102U
WILBAR CONTENDER 531B
WILBAR JENNIFER 215X

BELVIN TRES MARIAS PATRON 205
WILBAR JENNIFER 223A
WILBAR JENNIFER 221R

EPDS	BW	WW	YW	MM	TM	CE	MCE
	2.3	42	69	18	41	5.0	7.0

STAT	BW	AWW	AYW	AOD	CE
	80	740	1224	3	***



WILBAR *Rush* 76D

10/02/2016 1911392 WJD 76D

PLAINVIEW LUTTON E102
PLEASANT VALLEY LUTE 1207
CHERRY KNOLL ELSA 8014

BAR-E-L UNFORGIVEN 102U
WILBAR PRIDE 38Z
WILBAR PRIDE 907N

EPDS	BW	WW	YW	MM	TM	CE	MCE
	-2.4	28	51	22	39	10	11

STAT	BW	AWW	AYW	AOD	CE
	68	571	1026	4	***



WILBAR *Dash For Cash* 80D

12/02/2016 1942471 WJD 80D

BARSTOW CASH
KR CASH 4120
WK CANDY 9554

DMM TRADE SECRET 36X
WILBAR GEORGINA 127Z
WILBAR GEORGINA 476S

EPDS	BW	WW	YW	MM	TM	CE	MCE
	2.6	49	84	16	41	6	10

STAT	BW	AWW	AYW	AOD	CE
	84	755	1225	4	**





WILBAR *First Round* 86D



EPDS	
BW	2.9
WW	39
YW	66
MM	21
TM	41
CE	3.0
MCE	5.0
STATS	
BW	85
AWW	762
AYW	1271
AOD	9
CE	**

13/02/2016
WJD 86D
1911400

BAR-E-L UNFORGIVEN 102U
WILBAR CONTENDER 531B
WILBAR JENNIFER 215X

HF DISCOVERY 67P
DBRL 67P TIBBIE 41T
DBRL TIBBIE 04N



WILBAR *Black Ice* 89D



EPDS	
BW	3.6
WW	50
YW	88
MM	15
TM	40
CE	1.0
MCE	4.0
STATS	
BW	86
AWW	755
AYW	1330
AOD	6
CE	**

14/02/2016
WJD 89D
1911404

BAR-E-L UNFORGIVEN 102U
WILBAR CONTENDER 531B
WILBAR JENNIFER 215X

SOUTHLAND EXCLUSIVE 62U
WILBAR CELEBRITY 216X
WILBAR CELEBRITY 535S



WILBAR Trade Secret 99D

09/02/2016 1911389 WJD 99D

GUMBO GULCH CREED 94S
DMM TRADE SECRET 36X
SOUTHERN OX BLACKBIRD 12J

CONNEALY PREMIUM PRODUCT
WILBAR JENNIFER 10Z
WILBAR JENNIFER 215X

EPDS	BW	WW	YW	MM	TM	CE	MCE
	4.4	45	63	19	40	1.0	6.0

STATS	BW	AWW	AYW	AOD	CE
	96	742	1186	4	*



WILBAR Trade Secret 108D

19/02/2016 1911417 WJD 108D

GUMBO GULCH CREED 94S
DMM TRADE SECRET 36X
SOUTHERN OX BLACKBIRD 12J

CURRIE NEW DAY 6P
WILBAR MAYFLOWER 833U
WILBAR MAYFLOWER 839M

EPDS	BW	WW	YW	MM	TM	CE	MCE
	3.0	29	47	19	33	3.0	6.0

STATS	BW	AWW	AYW	AOD	CE
	89	674	1172	8	**





WILBAR Aviator 111D



EPDS	
BW	2.0
WW	41
YW	78
MM	18
TM	38
CE	6.0
MCE	7.0
STATS	
BW	84
AWW	772
AYW	1307
AOD	2
CE	***

20/02/2016
WJD 111D
1911418

MUSGRAVE AVIATOR
PM AVIATOR 19'14
POPLAR MEADOWS BLOSSOM 92'12

WILBAR EASTWOOD 200X
WILBAR SUSIE 500B
WILBAR SUSIE 30Z

Retaining 1/3
Semen Interest



WILBAR Aviator 112D

21/02/2016 1949209 WJD 112D

MUSGRAVE AVIATOR
PM AVIATOR 19'14
POPLAR MEADOWS BLOSSOM 92'12

HF SMOKIN' ACES 105Y
BAR-E-L BIRDIE 22B
BAR-E-L BIRDIE 29Z

EPDS	BW	WW	YW	MM	TM	CE	MCE
	1.8	48	79	24	46	9.5	9.0

STATS	BW	AWW	AYW	AOD	CE
	86	761	1262	2	***





WILBAR *Aviator* 118D

22/02/2016 1911421 WJD 118D

MUSGRAVE AVIATOR
PM AVIATOR 19'14
POPLAR MEADOWS BLOSSOM 92'12

WILBAR UNFORGIVEN 201X
HAYNES DARLENE 8B
TRIPLE L DARLENE 40U

EPDS	BW	WW	YW	MM	TM	CE	MCE
	3.2	43	80	21	41	3.0	7.0

STATS	BW	AWW	AYW	AOD	CE
	90	749	1271	2	**



WILBAR *Double Duty* 120D

23/02/2016 1911423 WJD 120D

PEAK DOT CAPACITY 601W
WILBAR CAPACITY 99Z
WILBAR GEORGINA 17P

DMM TRADE SECRET 36X
WILBAR ERICA 47Z
BREED CREEK ERICA 944

EPDS	BW	WW	YW	MM	TM	CE	MCE
	0.8	40	61	19	40	8.0	11.0

STATS	BW	AWW	AYW	AOD	CE
	76	758	1184	4	***



WILBAR *Capacity* 126D

24/02/2016 1911429 WJD 126D

PEAK DOT CAPACITY 601W
WILBAR CAPACITY 99Z
WILBAR GEORGINA 17P

WILBAR SERENGETI 101W
WILBAR LUCY 296A
WILBAR LUCY 729M

EPDS	BW	WW	YW	MM	TM	CE	MCE
	3.1	37	72	19	35	1.0	5.0

STATS	BW	AWW	AYW	AOD	CE
	89	685	1226	33	**





WILBAR *Cash* 127D

25/02/2016 1942469 WJD 127D

BARSTOW CASH
KR CASH 4120
 WK CANDY 9554

DUFF ENCORE 702
WILBAR PRINCESS 217X
 WILBAR PRINCESS 703M

EPDS	BW	WW	YW	MM	TM	CE	MCE
	5.3	56	97	19	46	-1.0	7.0

STATS	BW	AWW	AYW	AOD	CE
	96	827	1361	6	*



WILBAR *Aviator* 133D

27/02/2016 1911435 WJD 133D

MUSGRAVE AVIATOR
PM AVIATOR 19'14
 POPLAR MEADOWS BLOSSOM 92'12

WILBAR CAPACITY 99Z
WILBAR BLACKBIRD 571B
 WILBAR BLACKBIRD 252X

EPDS	BW	WW	YW	MM	TM	CE	MCE
	-0.9	40	71	21	42	10.0	11.0

STATS	BW	AWW	AYW	AOD	CE
	70	741	1212	2	***



WILBAR *Locomotive* 140D

01/03/2016 1911440 WJD 140D

SOO LINE MOTIVE 9016
SOO LINE LOCOMOTIVE 1403
 SHADY BROOK EVERENTENSE 2039

REMITALL F ODYSSEY 67X
BLAIR'S GEORGINA 354B
 GEIS GEROGINA 919'09

EPDS	BW	WW	YW	MM	TM	CE	MCE
	-2.0	35	52	22	42	11.0	9.0

STATS	BW	AWW	AYW	AOD	CE
	65	760	1110	2	***



WILBAR *Cash* 141B



EPDS	
BW	3.9
WW	46
YW	91
MM	17
TM	39
CE	2.0
MCE	8.0
STATS	
BW	89
AWW	694
AYW	1289
AOD	4
CE	*

01/03/2016
WJD 141D
1942468

BARSTOW CASH
KR CASH 4120
WK CANDY 9554

DMM TRADE SECRET 36X
WILBAR COUNTESS 62Z
MERIT COUNTESS 7174



WILBAR *Diplomat* 143D



EPDS	
BW	3.0
WW	3.9
YW	67
MM	20
TM	40
CE	3.0
MCE	6.0
STATS	
BW	88
AWW	776
AYW	1225
AOD	6
CE	**

02/03/2016
WJD 143D
1911441

PEAK DOT CAPACITY 601W
WILBAR CAPACITY 99Z
WILBAR GEORGINA 17P

BAR-E-L UNFORGIVEN 102U
WILBAR JENNIFER 212X
WILBAR JENNIFER 221R



WILBAR *Aviator* 155D

09/03/2016 1911449 WJD 155D

MUSGRAVE AVIATOR
PM AVIATOR 19'14
 POPLAR MEADOWS BLOSSOM 92'12
 BAR-E-L UNFORGIVEN 102U
WILBAR JENNIFER 431Y
 WILBAR JENNIFER 542L

EPDS	BW	WW	YW	MM	TM	CE	MCE
	0.1	37	76	24	43	8.0	8.0

STATS	BW	AWW	AYW	AOD	CE
	80	736	1322	5	***



WILBAR *Cash* 160D



EPDS	
BW	2.2
WW	55
YW	99
MM	23
TM	50
CE	6.0
MCE	9.0
STATS	
BW	84
AWW	813
AYW	1354
AOD	3
CE	***

13/03/2016
WJD 160D
 1942467

BARSTOW CASH
KR CASH 4120
 WK CANDY 9554

BENFIELD SUBSTANCE 8506
WIL WILBAR ERICA ENERGY 220A
 WILBAR ERICA ENERGY 3P





Wilbar *Capacity* 162D

15/03/2016 1911453 WJD 162D

PEAK DOT CAPACITY 601W
WILBAR CAPACITY 99Z
WILBAR GEORGINA 17P

BELVIN TRES MARIAS PATRON 205
WILBAR SUSIE 247A
C-BAR SUSIE 726R

EPDS	BW	WW	YW	MM	TM	CE	MCE
	2.7	42	66	16	36	7.0	9.0

STATS	BW	AWW	AYW	AOD	CE
	84	723	1126	3	***



Wilbar *Cash* 166D

20/03/2016 1942464 WJD 166D

BARSTOW CASH
KR CASH 4120
WK CANDY 9554

BLACK WHEEL TERMINATOR 43R
WILBAR RUBY 705T
WILBAR RUBY 32P

EPDS	BW	WW	YW	MM	TM	CE	MCE
	2.3	36	78	22	39	5.0	9.0

STATS	BW	AWW	AYW	AOD	CE
	85	616	1157	9	**



Wilbar *Cash* 169D

22/03/2016 1942471 WJD 169D

BARSTOW CASH
KR CASH 4120
WK CANDY 9554

BAR-E-L UNFORGIVEN 102U
WILBAR PRIDE 53Z
WILBAR PRIDE 256R

EPDS	BW	WW	YW	MM	TM	CE	MCE
	5.0	46	91	19	39	0.0	8.0

STATS	BW	AWW	AYW	AOD	CE
	94	720	1297	4	*



Reference Dams...



BW 223A Dam of 72D



DBRL41T Dam of 86D



LSF 34T Dam of 12D



WJD 838U Dam of 18D



WJD 833U Dam of 108D



BW 8B Dam of 111D



BW 73W Dam of 67D



WJD 123W Dam of 54D



BW 212X Dam of 143D



WJD 47Z Dam of 120D



WJD 38Z Dam of 76D



WJD 27 Dam of 28D



WJD 217X Dam of 127D



JKHF 47U Dam of 68D



WJD 476S Dam of 46D

Reference Dams...



WJD 503R Dam of 59D



ATAZ 66L Grand Dam of 73D



BW 638S Grand Dam of 168D, 172D, 175D & 182D



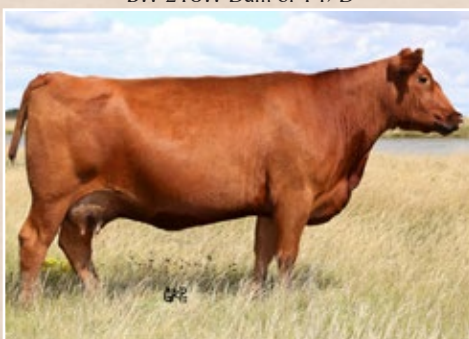
BW 218W Dam of 147D



WDM 897Z Dam of 65D



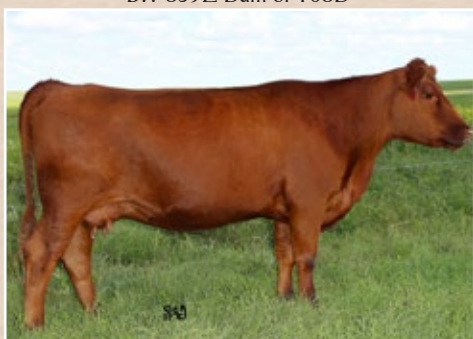
BW 839Z Dam of 168D



BW 863Z Grand Dam of 159D



WJD 4A Dam of 172D



BW 810Z Dam of 39D



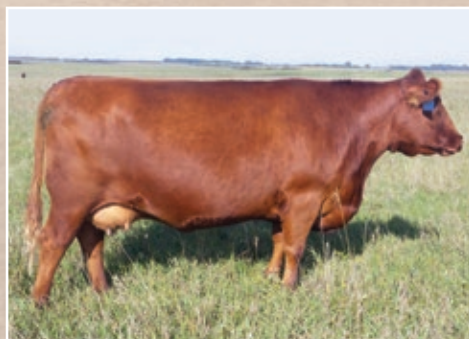
BW 694S Dam of 175D



BW 350X Dam of 35D



DBR 94P Grand Dam of 147D



YY 715T Dam of 91D



BW 869Z Grand Dam of 97D



ATAX 31N Dam of 97D



RED Pie Specialist 430B



EPDS	
BW	-5.8
WW	61
YW	101
MM	27
TM	58
CE	8.5
MCE	6.3
STATS	
BW	N/A
AWW	N/A
AYW	N/A
AOD	N/A
CE	N/A

02/02/2014
IMP 0430B
 1875330

RED BECKTON EPIC R397 K
RED LSF SAGA 1040Y
 RED LSF MINOLA T7172 W9041

RED PIE CODE RE D 9058
RED PIE PLAYMATE 232
 RED PIE PLAYMATE 028

Specialist was added to our herd sire line as an outcross sire with incredible birth to yearling spread. His calves are consistently ultra low birth weight. They come easily into this world and proceed to grow into stylish, hairy, stout individuals. The birth to yearling spread is definitely realized in this sire group. While we only had 3 sons (& one of them died), they are impressive! The daughters are favourites in the replacement pen and Owen selected one as his 4-H project. Specialist himself is long sided, wide from his top to his base and is dark red. Maternally, the Code Red daughters have excellent udders and are highly productive.

Average BW: Sons 78 lbs. Daughters 70 lbs.



RED WILBAR *Over The Top* 825Z



EPDS	
BW	-0.4
WW	45
YW	69
MM	-2
TM	20
CE	0.7
MCE	0.8
STATS	
BW	93
AWW	730
AYW	1303
AOD	6
CE	XX

15/02/2012
BW 825Z
 1700703

RED TER-RON FULLY LOADED 540R
RED TER-RON RELOAD 703T
 RED TER-RON SAMARIA 103N

RED TER-RON TORNADO 157M
RED WILBAR BRNDINA 638S
 RED LAZY MC BRNDINA 15E

Over The Top's natural muscle, tremendous hip shape and softness combined with his exceptional mother made him the ideal replacement for his sire. His sons are consistently stylish, high performing and sound with extra scrotal development. His first daughters weaned a strong set of calves. The daughters show the superior udder structure and milking ability of their granddam, 638S – possibly my favourite red cow! Owned by Moon's Red Angus

Average BW: Sons 83 lbs Daughters 79 lbs.



RED WILBAR *Speed* 32A



EPDS	
BW	1.1
WW	52
YW	87
MM	28
TM	58
CE	0.4
MCE	5.2
STATS	
BW	85
AWW	620
AYW	1153
AOD	xx
CE	xx

17/02/2013
BW 32A
 1769247

LAZY MC BOOM 44R
RED LAZY MC HUSTLE 18T
 RED LAZY MC LARKABA 70R

RED TER-RON TORNADO 157M
RED WILBAR CORA 443P
 RED HEAD CORA 159L

This son of the powerhouse cow, 443P, adds style, balance, hair and muscle to his progeny. Speed sires superior foot and leg structure, added length and width of base. We are calving his first daughters and, as expected, they display exceptional udder quality & milking ability. Speed combines proven production, reliable calving ease and a balanced EPD profile. His flushmate, Red Wilbar Backstop 392B also has a son in the sale. The consistent quality produced by these brothers is exactly what we were hoping for.
 Average BW: Sons 82 lbs. Daughters 82 lbs.



RED COCKBURN *Indeed* 439B



EPDS	
BW	-1.6
WW	34
YW	51
MM	23
TM	40
CE	-0.3
MCE	3.7
STATS	
BW	N/A
AWW	N/A
AYW	N/A
AOD	N/A
CE	N/A

24/02/2014
CWJ 439B
 1833964

RED CC EXPANSION 5E
RED TOWAW INDEED 104H
 RED TOWAW MOLLY 67C

RED TER-RON TORNADO 157M
RED WILBAR CORA 443P
 RED HEAD CORA 159L

While Indeed is among the most proven genetics in the breed, it is a relatively unused bloodline in our herd. The combination of the maternal giant, Indeed, and the most prolific cow our herd has produced, Red Wilbar Cora 443P, was an exciting addition to our herd bull battery. 439B sired an exceptional first calf crop almost exclusively out of first calvers. The sons on offer are stout, stylish with good hair and strong foot structure. The daughters are feminine and big bodied. A daughter sold to Triple L Angus of Viscount, SK in the Cowgirls Sale last fall. We expect 439B to bolster upper quality and overall maternal strength.
 Average BW: Sons 80 lbs. Daughters 76 lbs.



RED WILBAR *Speed* 8D



EPDS	
BW	-5.7
WW	38
YW	66
MM	21
TM	48
CE	9.0
MCE	6.3
STATS	
BW	62
AWW	703
AYW	1225
AOD	4
CE	***

18/01/2016
WJD 8D
1911346

RED LAZY MC HUSTLE 18T
RED WILBAR SPEED 32A
RED WILBAR CORA 443P

RED PASQUIA TOAST 15W
RED WRAZ DORITA 94Z
RED WRAZ DORITA 94Z



RED WILBAR *Velocity* 26D



EPDS	
BW	2.1
WW	54
YW	85
MM	25
TM	54
CE	0.8
MCE	3.7
STATS	
BW	96
AWW	757
AYW	1327
AOD	5
CE	*

27/01/2016
WJD 26D
1911362

RED LAZY MC HUSTLE 18T
RED WILBAR SPEED 32A
RED WILBAR CORA 443P

RED MESSMER PACKER S008
RED WILBAR CORA 27A
RED HEAD CORA 159L



RED WILBAR *Pac-Man* 34D



EPDS	
BW	-3.9
WW	47
YW	76
MM	19
TM	46
CE	8.4
MCE	4.1
STATS	
BW	66
AWW	777
AYW	1360
AOD	2
CE	**

29/01/2016
WJD 34D
1911366

RED MESSMER PACKER S008
RED WILBAR PACKER 383B
RED HEAD CORA 159L

RED SIX MILE OFF TOPIC 73Z
RED WILBAR REBECCA 330B
RED WILBAR REBECCA 834Z



RED WILBAR *Gunner* 59D



EPDS	
BW	1.1
WW	53
YW	85
MM	22
TM	49
CE	1.9
MCE	5.0
STATS	
BW	92
AWW	781
AYW	1355
AOD	11
CE	*

05/02/2016
WJD 59D
1911381

RED LAZY MC TROOPER 21Y
RED LAZY MC GUNNER 144B
RED LAZY MC STAR 185M

RED TER-RON TORNADO 157M
RED WILBAR CORA 503R
RED HEAD CORA 159L



RED WILBAR *Down Stream* 65D



EPDS	
BW	0.2
WW	42
YW	53
MM	17
TM	41
CE	-0.4
MCE	1.8
STATS	
BW	84
AWW	704
AYW	1141
AOD	4
CE	***

07/02/2016
WJD 65D
1911385

RED FCC RAMBO 502
RED SSS BOOMER 803B
RED SSS MISS HIGH LASS 352X

RED TER-RON RELOAD 703T
RED WILBAR SOXRO 897Z
RED WILBAR SOXRO 106U



RED WILBAR *Dimension* 73D



EPDS	
BW	-1.7
WW	37
YW	51
MM	20
TM	42
CE	4.6
MCE	5.2
STATS	
BW	85
AWW	730
AYW	1181
AOD	8
CE	**

09/02/2016
WJD 73D
1911391

RED BRYLOR SDL PASQUALE 213P
RED WILBAR PASQUALE 300B
RED WILBAR SOXRO 897Z

RED COMPASS MULBERRY 449M
RED WILBAR ANGIE 66U
RED BWB ANGIE 66'01 OF DESIGN



RED WILBAR *Copenhagen* 74D

10/02/2016 TWIN 1911393 WJD 74D

RED MINBURN COPENHAGEN 3Y
RED U-2 COPENHAGEN 86A
RED U-2 REBELLO 195L

RED SIX MILE NAVIGATOR 77N
RED WILBAR REBECCA 44U
RED HEAD REBECCA 254J

EPDS	BW	WW	YW	MM	TM	CE	MCE
	-1.2	43	54	14	35	4.7	6.0

STATS	BW	AWW	AYW	AOD	CE
	58	670	1095	8	**



RED WILBAR *Copenhagen* 81D

12/02/2016 1911396 WJD 81D

RED MINBURN COPENHAGEN 3Y
RED U-2 COPENHAGEN 86A
RED U-2 REBELLO 195L

RED WILBAR TORNADO 385X
RED WILBAR ANGIE 3A
RED BWB ANGIE 66'01 OF DESIGN

EPDS	BW	WW	YW	MM	TM	CE	MCE
	-1.8	37	56	15	37	3.6	1.7

STATS	BW	AWW	AYW	AOD	CE
	80	697	1243	3	***



RED WILBAR *Speed* 82D

12/02/2016 1911397 WJD 82D

RED LAZY MC HUSTLE 18T
RED WILBAR SPEED 32A
RED WILBAR CORA 443P

RED TER-RON RELOAD 703T
RED WILBAR LANA 313X
RED WILBAR LANA 346N

EPDS	BW	WW	YW	MM	TM	CE	MCE
	-1.3	34	54	14	37	3.0	3.9

STATS	BW	AWW	AYW	AOD	CE
	84	639	1147	6	***





RED WILBAR *Copenhagen* 83D



EPDS	
BW	-0.9
WW	41
YW	52
MM	16
TM	36
CE	3.4
MCE	1.9
STATS	
BW	86
AWW	739
AYW	1156
AOD	7
CE	**

12/02/2016
WJD 83D
1911398

RED MINBURN COPENHAGEN 3Y
RED U-2 COPENHAGEN 86A
RED U-2 REBELLO 195L

RED WILBAR REPLICIA 836T
RED WILBAR FIREFLY 227W
RED BWB FIREFLY 31N OF TREND



RED WILBAR *Speed* 91D



EPDS	
BW	0.3
WW	43
YW	64
MM	25
TM	50
CE	6.0
MCE	10.3
STATS	
BW	95
AWW	731
AYW	1229
AOD	9
CE	*

14/02/2016
WJD 91D
1911406

RED LAZY MC HUSTLE 18T
RED WILBAR SPEED 32A
RED WILBAR CORA 443P

RED LCHMAN COPPER ROB 1204D
RED YY ROSE 715T
RED DEVOLANE ROZINE 8B



93D RED WILBAR *Wolf Pack* 93D

14/02/2016 1911402 WJD 93D

RED MESSMER PACKER S008
RED WILBAR PACKER 383B
RED HEAD CORA 159L

RED WILBAR REPLICIA 836T
RED WILBAR TROPHY 684Y
RED WILBAR TROPHY 216M

EPDS	BW	WW	YW	MM	TM	CE	MCE
	-0.8	40	52	15	39	3.6	5.3

STATS	BW	AWW	AYW	AOD	CE
	89	665	1137	5	**



94D RED WILBAR *Indeed* 94D

15/02/2016 1911407 WJD 94D

RED TOWAW INDEED 104H
RED COCKBURN INDEED 439B
RED WILBAR CORA 443P

RED LAZY MC COWBOY CUT 26U
RED WILBAR BAYBERRY 310B
RED WILBAR BAYBERRY

EPDS	BW	WW	YW	MM	TM	CE	MCE
	0.5	41	62	13	35	-1.0	3.8

STATS	BW	AWW	AYW	AOD	CE
	82	696	1239	2	***



97D RED WILBAR *Off Topic* 97D

15/02/2016 1938290 WJD 97D

RED SIX MILE OFF TOPIC 73Z
RED WILBAR OFF TOPIC 380B
WILBAR SCAARA 869Z

RED BRYLOR NEW TREND 22D
RED BWB FIREFLY 31N OF TREND
RED BWB FIREFLY 61'96

EPDS	BW	WW	YW	MM	TM	CE	MCE
	0.8	35	60	22	44	0.7	2.1

STATS	BW	AWW	AYW	AOD	CE
	88	670	1224	13	**





RED WILBAR *Special Blend* 101D



EPDS	
BW	-4.4
WW	43
YW	70
MM	22
TM	47
CE	6.2
MCE	4.5
STATS	
BW	78
AWW	687
AYW	1245
AOD	7
CE	***

17/02/2016
WJD 101D
1911412

RED LSF SAGA 1040Y
RED PIE SPECIALIST 430
RED PIE PLAYMATE 232

RED YY THOR 750T
RED YY URRISAL 945W
RED YY URRISAL 745T



RED WILBAR *Indeed* 110D

19/02/2016 1911415 WJD 110D

RED TOWAW INDEED 104H
RED COCKBURN INDEED 439B
RED WILBAR CORA 443P

RED WILBAR OVER THE TOP 825Z
RED WILBAR LANA 354B
RED WILBAR LANA 432P

EPDS	BW	WW	YW	MM	TM	CE	MCE
	-0.7	29	48	14	32	0.4	3.5
STATS	BW	AWW	AYW	AOD	CE		
	80	625	1171	2	***		





RED WILBAR *Indeed* 130D



EPDS	
BW	0.6
WW	44
YW	67
MM	16
TM	40
CE	-1.1
MCE	3.2
STATS	
BW	81
AWW	728
AYW	1283
AOD	2
CE	***

25/02/2016
WJD 130D
 1911430

RED TOWAW INDEED 104H
RED COCKBURN INDEED 439B
 RED WILBAR CORA 443P

RED BAR-E-L DOUBLE DEUCE 198Y
RED WILBAR BLOCKANNA 379B
 RED WILBAR BLOCKANNA 218W



RED WILBAR *Indeed* 131D

26/02/2016 1911433 WJD 131D

RED TOWAW INDEED 104H
RED COCKBURN INDEED 439B
 RED WILBAR CORA 443P

RED WILBAR OVER THE TOP 825Z
RED WILBAR SOXRO 396B
 RED WILBAR SOXRO 635Y

EPDS	BW	WW	YW	MM	TM	CE	MCE
	0.3	44	59	16	38	0.3	3.5
STATS	BW	AWW	AYW	AOD	CE		
	83	772	1237	2	***		





RED WILBAR *Indeed* 132D



EPDS	
BW	0.7
WW	47
YW	72
MM	20
TM	43
CE	1.4
MCE	4.7
STATS	
BW	86
AWW	784
AYW	1354
AOD	2
CE	**

26/02/2016
WJD 132D
1911434

RED TOWAW INDEED 104H
RED COCKBURN INDEED 439B
RED WILBAR CORA 443P

RED BAR-E-L DOUBLE DEUCE 198Y
RED WILBAR QUEEN 390B
RED WILBAR QUEEN 45U



RED WILBAR *Special Blend* 147D



EPDS	
BW	0.8
WW	60
YW	93
MM	15
TM	46
CE	-0.7
MCE	3.0
STATS	
BW	94
AWW	755
AYW	1323
AOD	7
CE	*

06/03/2016
WJD 147D
1911445

RED LSF SAGA 1040Y
RED PIE SPECIALIST 430
RED PIE PLAYMATE 232

RED TER-RON RELOAD 703T
RED WILBAR BLOCKANNA 218W
RED BAR-E-L CHERRY 94P

Retaining 1/3
Semen Interest



RED WILBAR *Double Deuce* 158D



EPDS	
BW	0.1
WW	51
YW	76
MM	19
TM	47
CE	3.2
MCE	5.7
STATS	
BW	86
AWW	780
AYW	1343
AOD	8
CE	**

12/03/2016
WJD 158D
 1911452

BAR-E-L WARPAIN 167W
RED BAR-E-L DOUBLE DEUCE 198Y
 RED BAR-E-L GLORIA 88R

RED SSS BOOMER 803B
RED WILBAR SUE 3U
 RED RSL SUE 400F



RED WILBAR *Backstop* 159D

12/03/2016 1911451 WJD 159D

RED LAZY MC HUSTLE 18T
RED WILBAR BACKSTOP 392B
 RED WILBAR CORA 443P

RED SIX MILE OFF TOPIC 73Z
RED WILBAR FIREFLY 369B
 RED WILBAR FIREFLY 863Z

EPDS	BW	WW	YW	MM	TM	CE	MCE
	3.0	54	94	27	55	-0.5	3.3

STATS	BW	AWW	AYW	AOD	CE
	88	777	1470	2	*





RED WILBAR *Mountain Top* 168D



EPDS	
BW	-3.4
WW	33
YW	50
MM	4
TM	25
CE	5.3
MCE	1.3
STATS	
BW	78
AWW	662
AYW	1170
AOD	4
CE	***

22/03/2016
WJD 168D
1911457

RED TER-RON RELOAD 703T
RED WILBAR OVER THE TOP 825Z
RED WILBAR BRNDINA 638S

RED HOWE FINEST TRADITION 20W
RED WILBAR LANA 839Z
RED WILBAR LANA 603S

CANADIAN RED Angus
WIN AN EBY TRAILER

When you purchase* a Red Angus bull or female from a current Canadian Red Angus Promotion Society member, you will be entered to win a one year lease on a 20' Eby Stock Trailer.

*Registration transfer must be completed with Canadian Angus between now and June 30th.

THE TRAILER IS SPONSORED BY EBY AND T-DOWN TRAILERS.
EBY IS THE OFFICIAL TRAILER OF THE CANADIAN RED ANGUS PROMOTION SOCIETY.

Canadian Red Angus Promotion Society
www.redangus.ca office@redangus.ca

8010 ANNETT & T-DOWN TRAILERS (403) 342-5332 (403) 342-5334 info@tdown.ca Brooks, AB www.tdown.ca





172D RED WILBAR *Top Game* 172D

14/02/2016 1911393 WJD 172D

RED TER-RON RELOAD 703T
RED WILBAR OVER THE TOP 825Z
RED WILBAR BRNDINA 638S

RED LAZY MC REDMAN 63X
RED WILBAR LANA 4A
RED WILBAR LANA 603S

EPDS	BW	WW	YW	MM	TM	CE	MCE
	-1.1	49	78	10	34	3.5	-0.2

STATS	BW	AWW	AYW	AOD	CE
	80	-	-	3	***



175D RED WILBAR *Over The Top* 175D

27/03/2016 1911460 WJD 175D

RED TER-RON RELOAD 703T
RED WILBAR OVER THE TOP 825Z
RED WILBAR BRNDINA 638S

RED BRYLOR SDL TUSCON 117N
RED WILBAR BAYBERRY 694S
RED HEAD BAYBERRY 164J

EPDS	BW	WW	YW	MM	TM	CE	MCE
	-1.4	38	59	8	31	2.6	1.8

STATS	BW	AWW	AYW	AOD	CE
	82	726	1253	10	***



182D RED WILBAR *Over The Top* 182D

02/04/2016 1911464 WJD 182D

RED TER-RON RELOAD 703T
RED WILBAR OVER THE TOP 825Z
RED WILBAR BRNDINA 638SZ

RED WILBAR KING 302X
RED WILBAR REBECCA 834Z
RED HEAD REBECCA 254J

EPDS	BW	WW	YW	MM	TM	CE	MCE
	-2.1	32	51	9	29	4.3	2.7

STATS	BW	AWW	AYW	AOD	CE
	84	654	1173	4	***



Females



RED WILBAR *Lana* 24D

26/01/2016 1952487 WJD 24D

RED LAZY MC HUSTLE 18T
RED WILBAR SPEED 32A
 RED WILBAR CORA 443P

RED WILBAR RELOAD 322X
RED WILBAR LANA 850Z
 RED WILBAR LANA 346N

EPDS	BW	WW	YW	MM	TM	CE	MCE
	-2.6	37	68	18	43	2.3	5.3

STATS	BW	AWW	AYW	AOD
	70	558	836	4



RED WILBAR *Brndina* 35D

29/01/2016 191138 WJD 35D

RED TOWAW INDEED 104H
RED COCKBURN INDEED 439B
 RED WILBAR CORA 443P

RED WILBAR REPLICA 836T
RED WILBAR BRNDINA 350X
 RED WILBAR BRNDINA 638S

EPDS	BW	WW	YW	MM	TM	CE	MCE
	-2.0	27	37	18	33	2.0	4.6

STATS	BW	AWW	AYW	AOD
	80	539	732	6



RED WILBAR *Ruby* 39D

30/01/2016 1911369 WJD 39D

RED LAZY MC HUSTLE 18T
RED WILBAR SPEED 32A
 RED WILBAR CORA 443P

RED DIAMOND T HIPS STOUT 107U
RED WILBAR RUBY 810Z
 RED WILBAR RUBY 303X

EPDS	BW	WW	YW	MM	TM	CE	MCE
	-0.4	45	68	26	53	1.3	1.2

STATS	BW	AWW	AYW	AOD
	80	583	760	4



WILBAR *Lucy* 42D

02/02/2016 1911372 WJD 42D

GAR-EGL PROTEGE

PA FORTITUDE 2500
G G CLARA 0171

BAR-E-L UNFORGIVEN 102U

WILBAR LUCY 569B
WILBAR LUCY 723M

EPDS	BW	WW	YW	MM	TM	CE	MCE
	0.1	47	85	24	49	10.0	10.0

STATS	BW	AWW	AYW	AOD
	70	658	855	2



WILBAR *Erica* 67D

08/02/2016 1911387 WJD 67D

PEAK DOT CAPACITY 601W

WILBAR CAPACITY 99Z
WILBAR GEORGINA 17P

TC FREEDOM 104

WILBAR ERICA 73W
HF ERICA 61F

EPDS	BW	WW	YW	MM	TM	CE	MCE
	1.1	36	68	24	43	7.0	10.0

STATS	BW	AWW	AYW	AOD
	76	630	838	7



RED WILBAR *Tinsel* 71D

09/02/2016 1911390 WJD 71D

RED TOWAW INDEED 104H

RED COCKBURN INDEED 439B
RED WILBAR CORA 443P

RED WILBAR TORNADO 385X

RED WILBAR TINSEL 28A
RED WILBAR TINSEL 839T

EPDS	BW	WW	YW	MM	TM	CE	MCE
	-3.5	31	45	23	40	2.6	4.2

STATS	BW	AWW	AYW	AOD
	72	566	718	3





WILBAR *Annie K* 90D

14/02/2016 1911405 WJD 90D

PEAK DOT CAPACITY 601W
WILBAR CAPACITY 99Z
 WILBAR GEORGINA 17P

WILBAR TIMEX 660T
WILBAR ANNIE K 112W
 VALLEY BLOSSOM ANNIE K 743S

EPDS	BW	WW	YW	MM	TM	CE	MCE
	4.3	34	53	21	35	-1.0	4.0

STATS	BW	AWW	AYW	AOD
	92	568	700	7



WILBAR *Pride* 135D

28/02/2016 1911437 WJD 135D

PEAK DOT CAPACITY 601W
WILBAR CAPACITY 99Z
 WILBAR GEORGINA 17P

CURRIE NEW DAY 6P
WILBAR PRIDE 877U
 WILBAR PRIDE 575L

EPDS	BW	WW	YW	MM	TM	CE	MCE
	5.9	43	69	19	38	-2.0	5.0

STATS	BW	AWW	AYW	AOD
	95	679	835	8



RED WILBAR *Tinsel* 142D

02/03/2016 1911442 WJD 142D

RED TOWAW INDEED 104H
RED COCKBURN INDEED 439B
 RED WILBAR CORA 443P

RED WHITESTONE CAYENNE 423R
RED WILBAR TINSEL 839T
 RED BRYLOR TINSEL 67H

EPDS	BW	WW	YW	MM	TM	CE	MCE
	-1.7	38	52	21	43	-0.1	2.7

STATS	BW	AWW	AYW	AOD
	82	570	738	9



144D RED WILBAR *Bayberry* 144D

03/03/2016 1911443 WJD 144D

RED LSF SAGA 1040Y
RED PIE SPECIALIST 430
RED PIE PLAYMATE 232

RED TER-RON RELOAD 703T
RED WILBAR BAYBERRY
RED HEAD BAYBERRY 173J

EPDS	BW	WW	YW	MM	TM	CE	MCE
	-1.7	51	81	11	39	3.3	3.3

STATS	BW	AWW	AYW	AOD
	82	563	800	3



163D WILBAR *Atalanta* 163D

17/03/2016 1911454 WJD 163D

GUMBO GULCH CREED 94S
DMM TRADE SECRET 36X
SOUTHERN OX BLACKBIRD 12J

WILBAR SERENGETI 101W
WILBAR ATALANTA 488Y
WILBAR ATALANTA 12W

EPDS	BW	WW	YW	MM	TM	CE	MCE
	3.7	37	61	20	39	1.0	6.0

STATS	BW	AWW	AYW	AOD
	83	645	852	5



183D WILBAR *Jennifer* 183D

03/04/2016 1911465 WJD 183D

MUSGRAVE AVIATOR
PM AVIATOR 19'14
POPLAR MEADOWS BLOSSOM 92'12

BAR-E-L UNFORGIVEN 102U
WILBAR JENNIFER 319X
WILBAR JENNIFER 918N

EPDS	BW	WW	YW	MM	TM	CE	MCE
	0.6	43	77	20	42	8.0	11.0

STATS	BW	AWW	AYW	AOD
	78	647	N/A	6

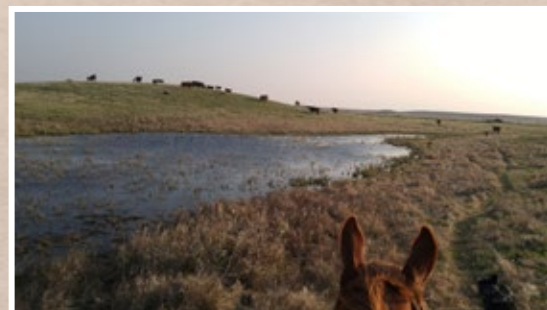
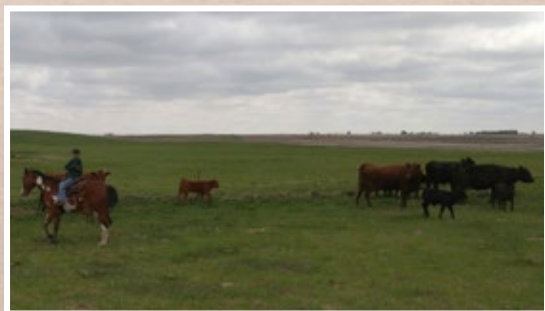




Commercial Heifers

On offer is our entire commercial open replacement heifer pen. These heifers are out of straight Angus or Red Angus cows. As a group of replacements, they are deep sided, sound and attractive with lots of hair. Maternally strong, they will make a great additional to your commercial herd. They are April & May born and will all be palpated prior to the sale. The heifers will be sorted into straight Angus/Red Angus or F1 pens of 5.

<i>Pen 1</i>	
<i>Pen 2</i>	
<i>Pen 3</i>	
<i>Pen 4</i>	
<i>Pen 5</i>	
<i>Pen 6</i>	
<i>Pen 7</i>	
<i>Pen 8</i>	
<i>Pen 9</i>	



Kylie's Heifer



*Wilbar Jennifer 728C
Pleasant Valley Lute x Duff Encore*



- Farmfair UFA Junior Show Grand Champion Female*
- Hanley 4-H Beef Achievement Day Grand Champion Female*
- Bruno All Breeds Heifer Jackpot Grand Champion*
- Summer Synergy Champion Angus Yearling*
- Farmfair Champion Intermediate Yearling*
- Saskatoon Beef Expo Reserve Grand Champion*

"The only way to do great work is to love what you do."





CANADIAN ANGUS Tag Program



The Canadian Angus tag program is the largest branded tag program in the world and has been around for over 15 years.

Canadian Angus tags visually and electronically identify cattle that are guaranteed Angus.

Animals bearing the tag are a minimum of 50% Angus genetics; as they have one registered Angus parent.

Angus branded beef programs source Angus tagged cattle.

Angus tags are CCIA approved.

Glossary

- BW Birth Weight
- AWW Adjusted Weaning Weight
- AYW Adjusted Yearling Weight
- AOD Age Of Dam

Calving Ease Scores

- *** Recommended for use on heifers for little to no assistance on normal births
- ** Recommended for use on larger heifers for minimal assistance on normal births
- * Recommended for use on cows



AVERAGE BLACK ANGUS EPDS

BW	WW	YW	MM	TM	CE	MCE
2.1	45	80	21	43	3.5	6.6

AVERAGE RED ANGUS EPDS

BW	WW	YW	MM	TM	CE	MCE
-0.4	53	78	17	44	3.4	4.0



Video Sale

All sale cattle will be videoed ahead of the sale. Videos will be available online at www.wilbarcattle.com. All sale cattle will be penned immediately north of the sale barn & will be available for viewing prior to the sale.

Terms

Payment due at the time of purchase. The right of property shall not pass until settlement has been made. All cattle sell under the standard terms and conditions of the Canadian Angus Association. All information in this catalogue is the most current available at press time. Any announcements made sale day supersede catalogue information.

Each animal becomes the risk of the purchaser at the point of sale.

Wilbar Cattle Co. reserves the right to collect semen on any bull for in-herd use only, at the seller's expense and buyer's convenience.

Scrotal circumference, ultrasound data and current weights will be available sale day.

All bulls will be semen tested and fully guaranteed. Bulls may remain at Wilbar Cattle Co. until May 1, 2017.

Bulls will be delivered to your yard or central points in Western Canada.

Wilbar Cattle will also provide assistance with trucking to Eastern Canada and the U.S.

All heifers will be palpated for breeding soundness.

Please make arrangements to pick up heifers before April 1, 2017.

Liabilities

All persons attend the sale at their own risk. The sellers, facility owner and sale staff assume no liability, legal or otherwise for any accidents that occur.

2016 Sale Highlights



WJD 701C \$22,500 to B-Elle Red Angus, Turtleford, SK



WJD 806C \$17,500 to Towaw Red Angus, Sangudo, AB



WJD 716C \$13,000 (1/2 int) to Black Ridge Angus, Dysart, SK



WJD 715C \$15,000 to Dew Angus, Windthorst, SK

Return Undeliverable
Canadian Addresses To:
T Bar C Cattle Co. Ltd.
4 - 3342 Millar Ave.
Saskatoon, SK
S7K 7G9



Summary of offering

60 Black & Red Angus Bulls
12 Black & Red Angus Heifers
45 Commercial Angus & AngusXSimm Heifers

Created By

T
TODAY'S
PUBLISHING