



Second Annual Red & Black Sale
Wednesday, April 5th, 2017

At 1:00 pm
Bow Slope Shipping
Brooks, AB

Red and Black
Simmental and Angus
Bulls and Heifers

WELCOME

WELCOME TO SEVEN-M LIVESTOCK'S SECOND ANNUAL BULL SALE. THANK YOU FOR YOUR INTEREST IN OUR PROGRAM. WE ARE VERY PROUD OF OUR MOMMA COWS AND WHAT THEY HAVE ACCOMPLISHED WITH THEIR CALVES. WE HOPE YOU FIND WHAT YOU'RE LOOKING FOR THROUGH THIS OFFERING. IF THERE IS ANYTHING WE CAN DO TO ASSIST WITH YOUR NEEDS PLEASE CONTACT US OR ANY OF THE SALES STAFF AT YOUR CONVENIENCE.

BRADLY, DONNA, LANDEN, KYLE, GARETT, TAYLOR AND BRENT MORISHITA



VISIT US:

BOX 688
210006 RR144
DUCHESS, AB
T0J0Z0

CONTACT US:

RES (403)378-3809

BRAD (403)363-5940
DONNA (403)427-3809

FAX (403)378-4206

DONNAW@TELUS.NET

WWW.SEVENM.CA

ON OFFER:

37 ~ Yearling Angus Bulls
6 ~ 2 Year old Angus Bulls
12 ~ Yearling Angus Heifers

10 ~ Yearling Simmental Bulls
5 ~ 2 Year old Simmental Bulls
9 ~ Yearling Simmental Heifers

4 ~ SimmAngus Bulls

SALE LOCATION:

BOW SLOPE SHIPPING ASSOC. ~ BROOKS, ALBERTA
(403)362-5521 FAX(403)362-5541 WWW.BOWSLOPE.COM

LUNCH: 12:00 NOON SALE TIME: 1:00 PM
PLEASE JOIN US FOR REFRESHMENTS IMMEDIATELY FOLLOWING
THE SALE.



SALE DAY PHONES:

BRAD MORISHITA (SEVEN-M): 403 363-5940
DONNA MORISHITA (SEVEN-M): 403 427-3809
DAN ENDERSBY (SEVEN-M): 403 793-4654

MARK SHOLOGAN (DLMS): 780 699-5082
WHITNEY BOSOVICH (DLMS): 780 991-3025

LACHIE MCKINNON (BOW SLOPE): 403 362-1825
ERIK CHRISTENSEN (BOW SLOPE): 403 363-9942
ART PAETKAU (BOW SLOPE): 403 793-4716
COLE WEBB (BOW SLOPE): 403 793-5387

LARRY TONER (STOCKMENS): 306 834-7652

Terms: The terms of sale are cash or cheque payable at the end of the sale and before any cattle will be released. The right of property shall not pass until after settlement is made. Each animal becomes the purchasers risk as soon as sold. All monies are in Canadian Funds. ****Please leave delivery instructions as well as transfer instructions for registry certificates at the time of settlement.****

Bidding: Each animal will be sold to the highest bidder. The auctioneer's decision on all disputes will be final.

Guarantee: We guarantee a sound breeding bull, if he fails to be a satisfactory breeder, we will replace him with a bull of equal value or credit towards the purchase of another bull.

Insurance: Will be available the day of sale through Stockmen's Insurance. All bulls fed until delivery are at the purchasers risk.

Delivery: Bulls can be kept free of charge until May 15th, 2016 if insured after which time yardage fees of \$3.00 per day will be charged. Bulls will be delivered free of charge up to 250 miles, anything over and above will be billed to the purchaser.

Liability: Each person attending the sale does so at their own risk. Owners or anyone connected with the sale assumes no responsibility for damage of any kind.

Semen: Seven-M Livestock Ltd. reserves the right to collect semen on any bull sold through this sale for in herd use at our expense and the buyers convenience.

Announcements: Any sale day announcements supersede information printed in this catalog.

Inspection: All bulls will be semen tested and vet inspected prior to sale day. Bulls are available for your inspection on the farm prior to sale day, or on sale day from 10:00 am until sale time. **All bulls have been vaccinated with Fusoguard, the footrot vaccine.**

Rights and Obligations: The terms and conditions above shall constitute a binding contract between buyer and seller. Resale of animals following this sale constitute a separate transaction making this original purchase contract null and void.

Phone, Mail & Wire Bids: Buyers unable to attend the sale may phone, wire or mail their bids and instructions to the sale manager, auctioneer or special representatives. Bids must be received in sufficient time prior to the sale.

Can't make it to the sale? Internet Bidding Available.

To view this sale visit www.dlms.ca, Fill out the registration form located under registration and sign-up for your free user account and select a username and password.

BIDDERS - To be approved as a bidder, Log in to dlms.ca and click BUYER APPROVAL tab, select the sale you are interested in bidding at and click sign up.

For more information
Call DLMS Reps:

Whitney Bosovich 780.991-3025

Mark Shologan 780.699.5082

DLMS
www.dlms.ca



Expected Progeny Differences (EPDs)

Statistics generated for individual cattle through national genetic evaluations.

EPDs:

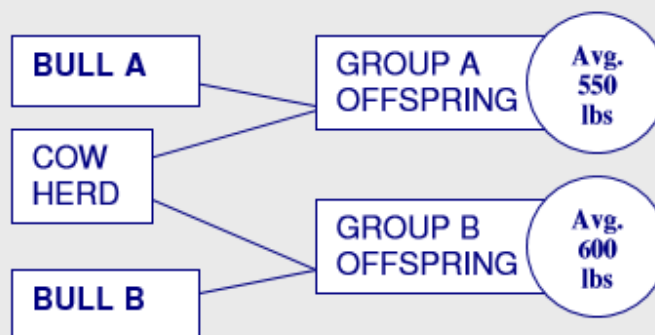
- ~ allow breeders to estimate an animal's value as a parent
- ~ allow a fair comparison of breeding value by removing environmental bias such as climate, feed and special management
- ~ help breeders make informed decisions regarding breeding stock selection by evaluating numerous traits including growth-related traits (BW, WW, YW, Milk), carcass (REA, FAT, %IMF, etc.) and reproductive efficiency (CE, MCE, SC)
- ~ estimate the average calf performance of one parent compared to the average calf performance of another parent, **assuming similar mates**

EPDs are an indication of how an animal's calves will perform on average compared to another animal's calves.

For example, if Bull A (weaning weight EPD of +10) and Bull B (WW of +60) were randomly mated with ten similar cows, we would expect the group average weaning weight of Bull A's offspring to be 50 lbs lighter than that of Bull B's (60-10=50).

Calf	A	B
1	500	400
2	510	450
3	520	500
4	530	550
5	540	600
6	560	600
7	570	650
8	580	700
9	590	750
10	600	800
Avg.	550	600

Note that not all calves from Bull B have a higher weaning weight, but the average is 50 lbs higher.



Accuracy – reflects the reliability of the EPD value. High accuracy values (>.70) mean the EPD value is closer to the true breeding value than an EPD value with a lower accuracy (<.20).

EPD averages for 2009-born Black Angus calves	
BW	+3.0
WW	+40
YW	+71
Milk	+17
TM	+37
CE	+1.0
MCE	+4.0
SC	+0.38
REA	+0.06
FAT	+0.010
MARB	+0.17

Tool for evaluating animals include EPDs, pedigree information, DNA test information, and visual assessment.

1890314 SEVEN-M ENDURANCE 7D SEVM 7D



DOB: 1/10/2016 BW: 72 AWW: 553 AYW: 1248
W C C PRINCIPAL X62 VISION UNANIMOUS 1418
BANDURA MR ENDURANCE 51A SEVEN-M MISS PANSY 9B
BANDURA BLACK LADY 8X PANSY OF PEAK DOT 817Y
EPDS- CE:4.5 BW:0.8 WW:49 YW:101 MILK:20 TM:48

1890318 SEVEN-M ENDURANCE 15D SEVM 15D



DOB: 1/23/2016 BW: 80 AWW: 633 AYW: 1281
W C C PRINCIPAL X62 PEAK DOT PROOF 1066X
BANDURA MR ENDURANCE 51A SEVEN-M LADY BELLE 26B
BANDURA BLACK LADY 8X LADY OF PEAK DOT 336X
EPDS- CE:8.7 BW:2.1 WW:58 YW:101 MILK:21 TM:45

1890319 SEVEN-M ENDURANCE 17D SEVM 17D



DOB: 1/23/2016 BW: 80 AWW: 587 AYW: 1188
W C C PRINCIPAL X62 EXAR DENVER 2002B
BANDURA MR ENDURANCE 51A EXAR SUSIE 4736
BANDURA BLACK LADY 8X EXAR SUSIE 2269
EPDS- CE:11 BW:1.1 WW:56 YW:100 MILK:25 TM:52

1890320 SEVEN-M ENDURANCE 19D SEVM 19D



DOB: 1/26/2016 BW: 100 AWW: 589 AYW: 1231
W C C PRINCIPAL X62 S A V ELIMINATOR 9105
BANDURA MR ENDURANCE 51A SEVEN-M LADY LILAH 36B
BANDURA BLACK LADY 8X LADY OF PEAK DOT 1118X
EPDS- CE:3.5 BW:6.3 WW:59 YW:103 MILK:24 TM:48

1895725 SEVEN-M RICOCHET 20D SEVM 20D



DOB: 1/28/2016 BW: 91 AWW: 507 AYW: 1230
EXAR DENVER 2002B HF KODIAK 5R
SEVEN-M RICOCHET 4B BANDURA ROSE EVERGREEN 43Y
EXAR EMPRESS 2744 ROSE EVERGREEN 144L
EPDS~ CE:5 BW:2.4 WW:49 YW:100 MILK:22 TM:48

1890321 SEVEN-M ENDURANCE 25D SEVM 25D



BANDURA MR ENDURANCE 51A

DOB: 2/3/2016 BW: 69 AWW: 533 AYW: 1136
W C C PRINCIPAL X62 S A V RADIANCE 0801
BANDURA MR ENDURANCE 51A SEVEN-M MISS DUCHESS 48B
BANDURA BLACK LADY 8X DUCHESS OF PEAK DOT 826Y
EPDS~ CE:8 BW:-0.9 WW:47 YW:89 MILK:24 TM:50

1895727 SEVEN-M SENTINAL 27D SEVM 27D



DOB: 2/3/2016 BW: 91 AWW: 589 AYW: 1096
S A V PREFERENCE 9184 SOO LINE DURANT 9282
SIX MILE SENTINAL 478Y BANDURA MISS ROSEBUD 13Z
RED SIX MILE LADY 220P BANDURA ROSEBUD 122X
EPDS~ CE:7.5 BW:1.4 WW:46 YW:56 MILK:22 TM:44

1895729 SEVEN-M SCARIAS-10789 29D SEVM 29D



DOB: 2/3/2016 BW: 96 AWW: 538 AYW: 1263
BLACK PRINCE 10789 SACARIAS S A V MASTERPIECE 5289
DIAMOND T SCARIAS-10789 1332 BANDURA MISS BEAUTY 28A
BLACK PRINCESS 8796 ERALINE SOO LINE BEAUTY 7035
EPDS~ CE:0.5 BW:4.9 WW:41 YW:72 MILK:14 TM:34

1896537 **SEVEN-M SENTINAL 35D** SEVM 35D



DOB: 2/5/2016 BW: 80 AWW: 609 AYW: 1233

S A V PREFERENCE 9184 SOO LINE DURANT 9282
 SIX MILE SENTINAL 478Y BANDURA MISS BLKCAP LILLIAN43Z
 RED SIX MILE LADY 220P BANDURA BLACK CAP LILLIAN 135X

EPDS~ CE:3.5 BW:1.2 WW:37 YW:58 MILK:24 TM:45

1896538 **SEVEN-M RICOCHET 40D** SEVM 40D



DOB: 2/7/2016 BW: 90 AWW: 517 AYW: 1122

EXAR DENVER 2002B BANDURA MASTER PIECE 9X
 SEVEN-M RICOCHET 4B BANDURA MISS 35M BLACK LADY 1A
 EXAR EMPRESS 2744 BANDURA BLACK LADY 87Y

EPDS~ CE:5 BW:2.4 WW:56 YW:98 MILK:23 TM:51

1896539 **SEVEN-M RICOCHET 43D** SEVM 43D



DOB: 2/8/2016 BW: 56 AWW: 550 AYW: 1224

EXAR DENVER 2002B LEES LATEST VERSION 0002
 SEVEN-M RICOCHET 4B BANDURA MISS MAY 183A
 EXAR EMPRESS 2744 MVF MAY 183P

EPDS~ CE:-0.2 BW:4.4 WW:53 YW:97 MILK:24 TM:50

1890893 **SEVEN-M MAINSTREAM 44D** SEVM 44D



DOB: 2/8/2016 BW: 94 AWW: 614 AYW: 1212

CONNELLY CONSENSUS 7229 PEAK DOT PREDOMINANT 92S
 SEVEN-M BULLSEYE 1B BARDOLIA OF PEAK DOT 744W
 AVELYN BABE 5'12 JUNE OF PEAK DOT 465N

EPDS~ CE:2.8 BW:2.9 WW:37 YW:61 MILK:22 TM:42

1891113 SEVEN-M ESTATE 54D SEVM 54D

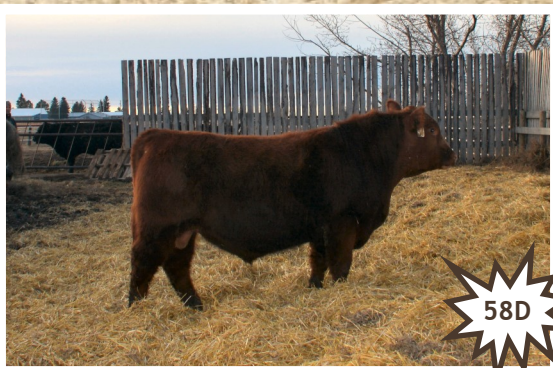


DOB: 2/11/2016 BW: 85 AWW: 594 AYW: 1285

O C C ECHELON 857E MOHNEN DYNAMITE 1356
O C C LEGACY 839L LADY OF PEAK DOT 508X
O C C DIXIE ERICA 960E LADY OF PEAK DOT 553R

EPDS~ CE:3.8 BW:1.6 WW:38 YW:79 MILK:16 TM:35

1891116 RED SEVEN-M ROCKET 58D SEVM 58D



DOB: 2/12/2016 BW: 95 AWW: 566 AYW: 1167

RED SIX MILE INTRIGUE 348X RED TER-RON WINDERMERE 14W
RED SEVEN-M INTRIGUE 129A RED TG PEARL 174Y
RED SIX MILE GLORIA 746W RED TG PEARL 217T

EPDS~ CE:0.5 BW:1.7 WW:46 YW:68 MILK:17 TM:44

1891123 SEVEN-M ENDURANCE 61D SEVM 61D



DOB: 2/13/2016 BW: 70 AWW: 624 AYW: 1243

W C C PRINCIPAL X62 PEAK DOT RANCLAND 29W
BANDURA MR ENDURANCE 51A SEVEN-M LADY 79B
BANDURA BLACK LADY 8X LADY OF PEAK DOT 676X

EPDS~ CE:6.5 BW:1.6 WW:48 YW:91 MILK:20 TM:45

1896541 SEVEN-M SENTINAL 72D SEVM 72D



DOB: 2/14/2016 BW: 104 AWW: 567 AYW: 1212

S A V PREFERENCE 9184 SOUTHLAND FREE STYLE 163U
SIX MILE SENTINAL 478Y BANDURA MISS EMBLYNETTE 170Z
RED SIX MILE LADY 220P S A V EMBLYNETTE 3128

EPDS~ CE:4.5 BW:5.1 WW:42 YW:75 MILK:26 TM:44

1891640 **SEVEN-M LADIES MAN 74D** SEVM 74D



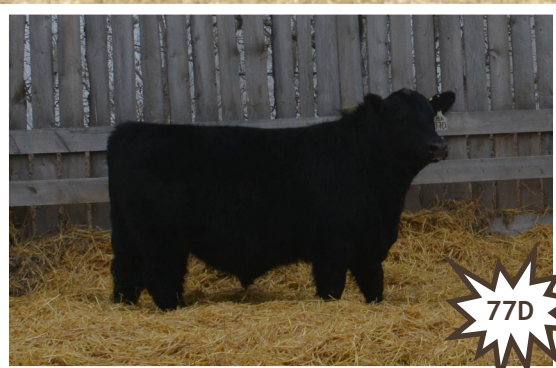
DOB: 2/15/2016 BW: 90 AWW: 517 AYW: 1031
 HF KODIAK 5R DUFF ENCORE 702
 SOO LINE MOTIVE 9016 PRUDINA OF PEAK DOT 762X
 TLA BEAUTY 5R PRUDINA OF PEAK DOT 716T
 EPDS~ CE:5.6 BW:0.3 WW:32 YW:50 MILK:18 TM:38

1896542 **SEVEN-M SENTINAL 75D** SEVM 75D



DOB: 2/15/2016 BW: 97 AWW: 557 AYW: 1097
 S A V PREFERENCE 9184 S A V BRAVE 8320
 SIX MILE SENTINAL 478Y BANDURA MISS MARYLEE 115A
 RED SIX MILE LADY 220P J D MARYLEE 135N
 EPDS~ CE:2.9 BW:2.4 WW:40 YW:57 MILK:23 TM:42

1896543 **SEVEN-M SENTINAL 77D** SEVM 77D



DOB: 2/16/2016 BW: 80 AWW: 604 AYW: 1218
 S A V PREFERENCE 9184 CONNEALY CONSENSUS 7229
 SIX MILE SENTINAL 478Y BANDURA MISS EILEEN 35A
 RED SIX MILE LADY 220P BANDURA EILEEN 35Y
 EPDS~ CE:4.4 BW:-0.4 WW:38 YW:67 MILK:26 TM:47

1891667 **SEVEN-M ENDURANCE 87D** SEVM 87D



DOB: 2/18/2016 BW: 70 AWW: 481 AYW: 1011
 W C C PRINCIPAL X62 PEAK DOT PROOF 1066X
 BANDURA MR ENDURANCE 51A SEVEN-M LADY PRUDINA 30B
 BANDURA BLACK LADY 8X PRUDINA OF PEAK DOT 762X
 EPDS~ CE:5.4 BW:0.2 WW:44 YW:79 MILK:20 TM:46

1891646 **RED SEVEN-M GAME ON 88D** SEVM 88D



DOB: 2/18/2016 BW: 74 AWW: 572 AYW: 1193

RED SIX MILE INTRIGUE 348X RED BRYLOR REDWOOD 50U
RED SEVEN-M INTRIGUE 129A RED SEVEN-M LASSIE 306A
RED SIX MILE GLORIA 746W RED SIX MILE LASSIE 464U

EPDS~ CE:2 BW:-1.9 WW:44 YW:76 MILK:11 TM:42

1891648 **SEVEN-M RICOCHET 89D** SEVM 89D



DOB: 2/18/2016 BW: 85 AWW: 552 AYW: 1104

EXAR DENVER 2002B S A V MASTERPIECE 5289
SEVEN-M RICOCHET 4B BANDURA BLACKCAP 28Y
EXAR EMPRESS 2744 4DJ RECAPTURE BLACKCAP 53R

EPDS~ CE:-2.5 BW:2.6 WW:54 YW:95 MILK:21 TM:51

1891650 **SEVEN-M ROBUST 90D** SEVM 90D



DOB: 2/19/2016 BW: 78 AWW: 562 AYW: 988

W C C PRINCIPAL X62 PEAK DOT PREDOMINANT 92S
BANDURA MR ENDURANCE 51A BARBARA OF PEAK DOT 285W
BANDURA BLACK LADY 8X BARBARA OF PEAK DOT 563K

EPDS~ CE:6.3 BW:-0.3 WW:39 YW:62 MILK:21 TM:42

1891656 **RED SEVEN-M TORPEDO 95D** SEVM 95D



DOB: 2/21/2016 BW: 82 AWW: 561 AYW: 1265

RED SIX MILE INTRIGUE 348X RED TER-RON WINDERMERE 14W
RED SEVEN-M INTRIGUE 129A RED TG LEE 159Y
RED SIX MILE GLORIA 746W RED TG OSCARLEE 156T

EPDS~ CE:2.7 BW:-1.1 WW:42 YW:77 MILK:18 TM:46

1892065 **RED SEVEN-M PRECISION 103D** SEVM 103D



DOB: 2/27/2016 BW: 83 AWW: 615 AYW: 1156

RED SIX MILE INTRIGUE 348X RED SSS POKER FACE 136Y
 RED SEVEN-M INTRIGUE 129A RED SSS MAXINE 766A
 RED SIX MILE GLORIA 746W RED SSS MAXINE 647X

EPDS~ CE:0.8 BW:0.2 WW:50 YW:75 MILK:16 TM:47

1896533 **SEVEN-M SENTINAL 108D** SEVM 108D



DOB: 2/29/2016 BW: 66 AWW: 513 AYW: 1122

S A V PREFERENCE 9184 S A V MASTERPIECE 5289
 SIX MILE SENTINAL 478Y BANDURA MISS BLACK LADY 99Z
 RED SIX MILE LADY 220P ISLA BANK BLACK LADY 2035

EPDS~ CE:5.5 BW:-3.2 WW:33 YW:63 MILK:22 TM:44

1896534 **SEVEN-M MR ENDURANCE 111D** SEVM 111D



DOB: 2/29/2016 BW: 78 AWW: 603 AYW: 1209

W C C PRINCIPAL X62 MOHNEN DYNAMITE 1356
 BANDURA MR ENDURANCE 51A ANNIE K OF PEAK DOT 607U
 BANDURA BLACK LADY 8X ANNIE K OF PEAK DOT 526S

EPDS~ CE:3 BW:-0.1 WW:50 YW:95 MILK:18 TM:42

1894211 **SEVEN-M MR ENDURANCE 115D** SEVM 115D



DOB: 3/4/2016 BW: 81 AWW: 634 AYW: 1284

W C C PRINCIPAL X62 PEAK DOT PREDOMINANT 82S
 BANDURA MR ENDURANCE 51A BARBARA OF PEAK DOT 474U
 BANDURA BLACK LADY 8X BARBARA OF PEAK DOT 213S

EPDS~ CE:3.3 BW:-2.5 WW:50 YW:88 MILK:21 TM:45

1894212 **SEVEN-M MR ENDURANCE 116D** SEVM 116D



DOB: 3/4/2016 BW: 89 AWW: 584 AYW: 1208

W C C PRINCIPAL X62 DUFF ENCORE 702
BANDURA MR ENDURANCE 51A MIA OF PEAK DOT 1052X
BANDURA BLACK LADY 8X MIA OF PEAK DOT 219M

EPDS~ CE:6.2 BW:2.3 WW:45 YW:86 MILK:15 TM:34

1894214 **SEVEN-M BULL 119D** SEVM 119D



DOB: 3/5/2016 BW: 67 AWW: 603 AYW: 1199

W C C PRINCIPAL X62 S A V ELIMINATOR 9105
BANDURA MR ENDURANCE 51A SEVEN-M MISS BARBARA 40B
BANDURA BLACK LADY 8X BARBARA OF PEAK DOT 474U

EPDS~ CE:3.9 BW:0.1 WW:52 YW:100 MILK:19 TM:46

1894218 **SEVEN-M MR ENDURANCE 138D** SEVM 138D



DOB: 3/12/2016 BW: 70 AWW: 552 AYW: 1182

W C C PRINCIPAL X62 PEAK DOT BOLD 204U
BANDURA MR ENDURANCE 51A SEVEN-M LADY JANE 80B
BANDURA BLACK LADY 8X JANE OF PEAK DOT 472X

EPDS~ CE:7 BW:-0.3 WW:47 YW:90 MILK:18 TM:41

1911198 **SEVEN-M MR ENDURANCE 144D** SEVM 144D

DOB: 3/16/2016 BW: 57 AWW: 486 AYW: 1019
W C C PRINCIPAL X62 S A V IRON MOUNTAIN 8066
BANDURA MR ENDURANCE 51A BARDOLIA OF PEAK DOT 921Y
BANDURA BLACK LADY 8X BARDOLIA OF PEAK DOT 820T



EPDS~ CE:6.4 BW:-6 WW:36 YW:66 MILK:19 TM:45

1894220 **SEVEN-M MR ENDURANCE 146D** SEVM 146D



DOB: 3/18/2016 BW: 74 AWW: 605 AYW: 1203
 W C C PRINCIPAL X62 S A V IRON MOUNTAIN 8066
 BANDURA MR ENDURANCE 51A HEROINE OF PEAK DOT 837Y
 BANDURA BLACK LADY 8X HEROINE OF PEAK DOT 264W
 EPDS~ CE:5.5 BW:-1.1 WW:50 YW:91 MILK:19 TM:45

1894221 **SEVEN-M MR ENDURANCE 147D** SEVM 147D



DOB: 3/18/2016 BW: 70 AWW: 614 AYW: 1251
 W C C PRINCIPAL X62 MOHNEN DYNAMITE 1356
 BANDURA MR ENDURANCE 51A BAMBI OF PEAK DOT 490X
 BANDURA BLACK LADY 8X LADY OF PEAK DOT 871L
 EPDS~ CE:7.5 BW:-2.2 WW:48 YW:94 MILK:18 TM:42

1896535 **SEVEN-M SENTINAL 149D** SEVM 149D



DOB: 3/19/2016 BW: 76 AWW: 496 AYW: 1058
 S A V PREFERENCE 9184 S A V MASTERPIECE 5289
 SIX MILE SENTINAL 478Y BANDURA POLICY 22Y
 RED SIX MILE LADY 220P SOUTHLAND FREEDA 130R
 EPDS~ CE:2 BW:-1 WW:33 YW:59 MILK:25 TM:47

1894222 **SEVEN-M MR ENDURANCE 150D** SEVM 150D



DOB: 3/20/2016 BW: 73 AWW: 649 AYW: 1252
 W C C PRINCIPAL X62 PEAK DOT BOLD 204U
 BANDURA MR ENDURANCE 51A PENNY OF PEAK DOT 314Y
 BANDURA BLACK LADY 8X PENNY OF PEAK DOT 774T
 EPDS~ CE:5.9 BW:-1.7 WW:49 YW:92 MILK:23 TM:47

1894223 **SEVEN-M MR ENDURANCE 153D** SEVM 153D



DOB: 3/23/2016 BW: 63 AWW: 544 AYW: 1119

W C C PRINCIPAL X62
BANDURA MR ENDURANCE 51A
BANDURA BLACK LADY 8X

S A V IRON MOUNTAIN 8066
DUCHESS OF PEAK DOT 588Y
DUCHESS OF PEAK DOT 610T

EPDS~ CE:4.2 BW:-3.7 WW:41 YW:81 MILK:19 TM:44

THANK YOU!!

WE WOULD LIKE TO THANK THE FOLLOWING BUYERS FOR YOUR SUPPORT OF OUR 2016 1ST ANNUAL BULL SALE!

Bandura Ranches (Joe & Sandy Bandura) ~ Duchess, Alberta

Bar N Ghost Pine ~ Turner Valley, Alberta

Beerd Beekman ~ Strathmore, Alberta

Neal Deitz

Jordan Downey ~ Strathmore, Alberta

Dennis Endersby ~ Brooks, Alberta

Gem Land & Cattle Ltd. (Andrew Walde) ~ Gem, Alberta

Bob Hale ~ Bassano, Alberta

Honeco Ltd. (Greg Honess) ~ Lomond, Alberta

Rick Irwin ~ Brooks, Alberta

Ivy Ranch (Dan Plumer) ~ Duchess, Alberta

Lorne S Farms Ltd. ~ Bassano, Alberta

Larry Lupuliak ~ Chinook, Alberta

Lyzenga Farms Ltd. ~ Rosemary, Alberta

Glenn Martin

Loche McKinnon ~ Brooks, Alberta

M & L Farms Ltd. ~ Bassano, Alberta

Tom Ovinge ~ Scandia, Alberta

R.M. Bildersheim Farms Inc. ~ Brooks, Alberta

Troy Rutschman ~ Duchess, Alberta

Siksika Tribal Ranch ~ Siksika, Alberta

Sundial Livestock ~ Bassano, Alberta

Takeda Feeding Co. Ltd. ~ Scandia, Alberta

1887794 **SEVEN-M 71C** SEVM 71C**71C**

DOB: 2/13/2015 BW: 94 AWW: 519 AYW: 913

RED SOO LINE T100 9125
RED MLG CANYON 36Z
RED T-BAR MULBERRY MARSLIT 14WMOHNEN DYNAMITE 1356
LADY OF PEAK DOT 511X
LADY OF PEAK DOT 410R

EPDS- CE:2.1 BW:0 WW:54 YW:97 MILK:17 TM:44

1864485 **SEVEN-M SCARIAS 74C** SEVM 74C**74C**

DOB: 2/14/2015 BW: 84 AWW: 472 AYW: 794

BLACK PRINCE 10789 SACARIAS
DIAMOND T SCARIAS-10789 1332
BLACK PRINCESS 8796 ERALINES A V ELIMINATOR 9105
ANNIE K OF PEAK DOT 747Y
ANNIE K OF PEAK DOT 371W

EPDS- CE:2 BW:3.2 WW:35 YW:64 MILK:14 TM:31

1889775 **SEVEN-M CANYON 98C** SEVM 98C**98C**

DOB: 2/27/2015 BW: 100 AWW: 530 AYW: 935

RED SOO LINE T100 9125
RED MLG CANYON 36Z
RED T-BAR MULBERRY MARSLIT 14WS A V IRON MOUNTAIN 8066
LASSIE OF PEAK DOT 173Y
LASSIE OF PEAK DOT 430U

EPDS- CE:-5.1 BW:1.2 WW:56 YW:92 MILK:14 TM:42

1882574 **SEVEN-M SENTINAL 107C** SEVM 107C**107C**

DOB: 3/9/2015 BW: 83 AWW: 577 AYW: 962

S A V PREFERENCE 9184
SIX MILE SENTINAL 478Y
RED SIX MILE LADY 220PS A V BULLETIN 7904
NEONIA OF PEAK DOT 1091X
NEONIA OF PEAK DOT 534U

EPDS- CE:2 BW:2.3 WW:30 YW:61 MILK:22 TM:36

1852111 **SEVEN-M UPWARD 185C** SEVM 185C**185C**

DOB: 3/3/2015 BW: 97 AWW: 607 AYW: 1065

SITZ UPWARD 307R
TW. UPWARD 35X
MAR BLACKCAP 5073S A V MASTERPIECE 5289
BANDURA BLACKCAP 28Y
4DJ RECAPTURE BLACKCAP 53R

EPDS- CE:-3 BW:4.4 WW:53 YW:101 MILK:23 TM:48

1852117 **SEVEN-M UPWARD 191C** SEVM 191C**191C**

DOB: 3/10/2015 BW: 96 AWW: 575 AYW: 923

SITZ UPWARD 307R
TW. UPWARD 35X
MAR BLACKCAP 5073S A V CAMPBELL 0065
BANDURA MISS JULIANA 77Z
HARRON JULIANA 10N

EPDS- CE:-3.1 BW:4.7 WW:45 YW:79 MILK:21 TM:44



**BOW VALLEY
VETERINARY
CLINIC LTD.**

1896554 **SEVEN-M MISS LYNANNE 50D** SEVM 50D



DOB: 2/10/2016 BW: 108 AWW: 611 AYW: 1095
BLACK PRINCE 10789 SACARIAS LLB FREE WHEELER 268S
DIAMOND T SCARIAS-10789 1332 BANDURA ANNE 42Y
BLACK PRINCESS 8796 ERALINE ROYAL ESTON ANNE 3T
EPDS~ CE:0 BW:9.5 WW:46 YW:76 MILK:10 TM:28

1891111 **SEVEN-M MISS ROSIE 51D** SEVM 51D



DOB: 2/10/2016 BW: 73 AWW: 561 AYW: 1016
CONNELLY CONSENSUS 7229 PEAK DOT DOMINATOR 42U
SEVEN-M BULLSEYE 1B ROSILLA OF PEAK DOT 345X
AVELYN BABE 5'12 ROSILLA OF PEAK DOT 422N
EPDS~ CE:1.3 BW:1.2 WW:37 YW:65 MILK:16 TM:36

1891119 **SEVEN-M MISS EMPRESS 63D** SEVM 63D



DOB: 2/13/2016 BW: 81 AWW: 563 AYW: 1124
W C C PRINCIPAL X62 WMR TIMELESS 458
BANDURA MR ENDURANCE 51A EXAR EMPRESS 2744
BANDURA BLACK LADY 8X OSU EMPRESS 8104
EPDS~ CE:3 BW:2.3 WW:58 YW:115 MILK:25 TM:53

1891120 **SEVEN-M MISS DIXIE 64D** SEVM 64D



DOB: 2/13/2016 BW: 105 AWW: 567 AYW: 1039
CONNELLY CONSENSUS 7229 PEAK DOT PREDOMINANT 82S
SEVEN-M BULLSEYE 1B LADY OF PEAK DOT 360X
AVELYN BABE 5'12 LADY OF PEAK DOT 645K
EPDS~ CE:3.3 BW:6.8 WW:52 YW:81 MILK:14 TM:35

1896553 **SEVEN-M MISS LUCY 68D** SEVM 68D



DOB: 2/14/2016 BW: 78 AWW: 521 AYW: 965

S A V PREFERENCE 9184 JUSTAMERE 406S PANAMAJACK 336U
 SIX MILE SENTINAL 478Y BANDURA MISS LUCY 113A
 RED SIX MILE LADY 220P WILBAR LUCY 281R

EPDS~ CE:2.9 BW:1.3 WW:43 YW:64 MILK:22 TM:43

1896555 **SEVEN-M MISS RUTH 79D** SEVM 79D



DOB: 2/17/2016 BW: 110 AWW: 556 AYW: 1112

EXAR DENVER 2002B LLB FREE WHEELER 268S
 SEVEN-M RICOCHET 4B BANDURA RUTH 51Y
 EXAR EMPRESS 2744 LLB ANGUS BARB 4P

EPDS~ CE:-1.4 BW:9.4 WW:64 YW:114 MILK:23 TM:51

1911202 **SEVEN-M MISS ELINE 128D** SEVM 128D



DOB: 3/7/2016 BW: 70 AWW: 573 AYW: 1138

W C C PRINCIPAL X62 ROYAL FINAL ANSWER DRCC 1015Y
 BANDURA MR ENDURANCE 51A HR HAHN HARTLEY ELINE 102A
 BANDURA BLACK LADY 8X ROYAL HARTLEY ELINE DRCC 4004P

EPDS~ CE:6 BW:0.3 WW:52 YW:102 MILK:28 TM:54

1911331 **SEVEN-M MISS LADY 129D** SEVM 129D



DOB: 3/8/2016 BW: 70 AWW: 541 AYW: 1001

RED SIX MILE INTRIGUE 348X MOHNEN DYNAMITE 1356
 RED SEVEN-M INTRIGUE 129A LADY OF PEAK DOT 532X
 RED SIX MILE GLORIA 746W LADY OF PEAK DOT 498R

EPDS~ CE:5.9 BW:-1.4 WW:47 YW:82 MILK:14 TM:43

1911332 **SEVEN-M MISS LUCY 134D** SEVM 134D



DOB: 3/10/2016 BW: 83 AWW: 498 AYW: 998

S A V PREFERENCE 9184 S A V CAMPBELL 0065
SIX MILE SENTINAL 478Y BANDURA MISS LUCY 154A
RED SIX MILE LADY 220P BANDURA LUCY 136X

EPDS- CE:1.8 BW:2.4 WW:40 YW:63 MILK:23 TM:43

1911199 **SEVEN-M MISS ANNE 139D** SEVM 139D



DOB: 3/12/2016 BW: 75 AWW: 561 AYW: 1030

W C C PRINCIPAL X62 MOHNEN DYNAMITE 1356
BANDURA MR ENDURANCE 51A LADY OF PEAK DOT 528X
BANDURA BLACK LADY 8X LADY OF PEAK DOT 729R

EPDS- CE:4.5 BW:0.6 WW:49 YW:89 MILK:18 TM:40

1911334 **SEVEN-M MISS QUEEN 148D** SEVM 148D



DOB: 3/19/2016 BW: 62 AWW: 525 AYW: 976

S A V PREFERENCE 9184 S A V MASTERPIECE 5289
SIX MILE SENTINAL 478Y BANDURA MISS QUEEN 121Y
RED SIX MILE LADY 220P REMITALL QUEEN 712R

EPDS- CE:3.2 BW:-1.9 WW:32 YW:55 MILK:24 TM:43

1894224 **SEVEN-M MISS BAMBI 154D** SEVM 154D



DOB: 3/24/2016 BW: 76 AWW: 542 AYW: 1005

CONNELLY CONSENSUS 7229 S A V IRON MOUNTAIN 8066
SEVEN-M BULLSEYE 1B BAMBI OF PEAK DOT 159Y
AVELYN BABE 5'12 BAMBI OF PEAK DOT 456U

EPDS- CE:-0.7 BW:2.1 WW:47 YW:83 MILK:14 TM:37

1160592 **SEVEN-M TURBO 252C** SML 252C

DOB: 12/28/2015 BW: 106 AWW: 691 AYW: 1336

SVS CAPTAIN MORGAN 11Z R PLUS HARD ROCK 145X
 RF DEVILS TRIANGLE 408B SRH JOY 10B
 RF FLIRT 16X STS JOY 207U

EPDS~ CE:7.8 BW:4.9 WW:76.6 YW:111.1 MILK:21

1161325 **SEVEN-M BLOCKBUSTER 6D** SML 6D

DOB: 1/8/2016 BW: 96 AWW: 669 AYW: 1312

SVS CAPTAIN MORGAN 11Z MR NLC UPGRADE U8676
 RF DEVILS TRIANGLE 408B SEVEN-M MISS BRIDGET 13B
 RF FLIRT 16X SEVEN-M MISS ZINNIE 108Z

EPDS~ CE:10.5 BW:2 WW:69.8 YW:100.7 MILK:25

1162108 **RED SEVEN-M HEADLINER 11D** SML 11D

DOB: 1/17/2016 BW: 90 AWW: 624 AYW: 1229

SVS CAPTAIN MORGAN 11Z KUNTZ SUPER DUTY 4Y
 RF DEVILS TRIANGLE 408B DEEG MS SATIN 93B
 RF FLIRT 16X DEG 43T

EPDS~ CE:9.3 BW:2.4 WW:68 YW:95.9 MILK:23.7

1162368 **SEVEN-M CASANOVA 12D** SML 12D

DOB: 1/20/2016 BW: 102 AWW: 619 AYW: 1186

SVS CAPTAIN MORGAN 11Z KUNTZ SUPER DUTY 4Y
 RF DEVILS TRIANGLE 408B NEW TREND GINGER 14B
 RF FLIRT 16X NEW TREND TRIBUTE 7T

EPDS~ CE:7.5 BW:4.2 WW:73.3 YW:108.2 MILK:21.5

1163353 **SEVEN-M HIGH ROLLER 22D** SML 22D



DOB: 1/31/2016 BW: 90 AWW: 648 AYW: 1173

REMINGTON LOCK N LOAD 54U OLF ODIN U5
SWAN LAKE LOADED 99A BLACKRIVER FIRST KISS 64A
MRL MISS 390X NEW TREND KISS THIS 7Y

EPDS- CE:12.3 BW:1.8 WW:64.8 YW:104 MILK:24.2

1163354 **SEVEN-M STACKED DECK 23D** SML 23D



DOB: 1/31/2016 BW: 89 AWW: 637 AYW: 1184

SVS CAPTAIN MORGAN 11Z SUNNY VALLEY SARGENT 24S
RF DEVILS TRIANGLE 408B SEVEN-M LADY STIENA 23B
RF FLIRT 16X BAR 5 SASMSTIENA 419Y

EPDS- CE:13.2 BW:0.3 WW:58 YW:79.8 MILK:30

1164504 **SEVEN-M ALLSTAR 71D** SML 71D



DOB: 2/14/2016 BW: 81 AWW: 604 AYW: 1061

REMINGTON LOCK N LOAD 54U CLO LTS ENTOURAGE 72T
SWAN LAKE LOADED 99A DUNCS TRIPLE A
MRL MISS 390X MUIRHEADS TRIPLE X 3X

EPDS- CE:11.3 BW:1.3 WW:59.4 YW:90.8 MILK:20.4

1166953 **SEVEN-M WALKER 125D** SML 125D



DOB: 3/6/2016 BW: 85 AWW: 676 AYW: 1265

SVS CAPTAIN MORGAN 11Z RFS RED IRON T20
RF DEVILS TRIANGLE 408B SEVEN-M MISS MIRANDA 8B
RF FLIRT 16X IRCC ZEZE 225Z

EPDS- CE:8.5 BW:2.3 WW:66.1 YW:93.4 MILK:23.2

1166954 **RED SEVEN-M HEAT SEEKER 130D** SML 130D



DOB: 3/8/2016 BW: 106 AWW: 720 AYW: 1341

MRL 130Y
COME AS U R RED ROCKET
MISS XCITING 14X

SAUGEEN WONDER BOY 903W
SEVEN-M P YVES 1001Y
SAUGEEN WEY AWESOME 911W

EPDS~ CE:1.4 BW:6.4 WW:81.6 YW:123.7 MILK:26.8

1181110 **RED SEVEN-M BULL 163D** SML 163D



DOB: 4/12/2016 BW: 103 AWW: 889 AYW: 1391

SVS CAPTAIN MORGAN 11Z
RF DEVILS TRIANGLE 408B
RF FLIRT 16X

ANCHOR "T" SUPREME 39H
SAUGEEN XALINA 19X
SAUGEEN UMA 61U

EPDS~ CE:7 BW:4. WW:79.8 YW:112 MILK:27.5

NO BULL.

No bull? No breeding program. When you've got lame bulls due to footrot, it's like having no bulls at all. Fusogard[®] vaccine is the simple and straightforward way to decrease the severity of footrot and keep your breeding program on track.

FUSOGARD[®] | POWERFUL | ECONOMICAL | PROACTIVE

FUSOGARD[®]



SIMMENTAL 2 YEAR OLD BULLS

1135755 **RED SEVEN-M BEEF MASTER** SML 20C

20C DOB: 1/12/2015 BW: 92 AWW: 667 AYW: 1144

HOOKS SHEAR FORCE 38K
WS BEEF MAKER R13
DCR MS RIBEYE N72

SAUGEEN WONDER BOY 903W
SEVEN-M MISS YSABEL 1011Y
SAUGEEN ELSIE 934W

EPDS~ CE:12.6 BW:1.3 WW:71.8 YW:105.3 MILK:30.9

1135919 **RED SEVEN-M TORPEDO 43C** SML 43C

43C DOB: 1/25/2015 BW: 100 AWW: 604 AYW: 1092

MRL 130Y
COME AS U R RED ROCKET
MISS XCITING 14X

WHEATLAND RED ACE 747T
SAUGEEN WITIA 4X
SAUGEEN TITIA 58T

EPDS~ CE:6.5 BW:3.7 WW:74.1 YW:112 MILK:20.9

1136052 **RED SEVEN-M MOUNT 'EM 46C** SML 46C

46C DOB: 1/26/2015 BW: 94 AWW: 592 AYW: 933

THSF FREEDOM 300N
TRAXS RUSHMORE X103
MISS TRAX U850

SAUGEEN SCORPION 31S
SAUGEEN XEA 42X
SAUGEEN REA 3R

EPDS~ CE:11.6 BW:0.9 WW:61.4 YW:88 MILK:21.4

1145033 **SEVEN-M BLACK IS BACK 81C** SML 81C

81C DOB: 2/18/2015 BW: 92 AWW: 577 AYW: 1001

MJ REDLANDS 1X
MJ RED LANDER 91Z
MJ RED SALSA 269S

WHEATLAND RED ACE 747T
SEVEN-M P YVETTE 915Y
SAUGEEN WHITNEY 922W

EPDS~ CE:8.6 BW:3 WW:64.7 YW:90.1 MILK:22.5

1145045 **SEVEN-M OTIS 94C** SML 94C

94C DOB: 2/25/2015 BW: 90 AWW: 685 AYW: 1095

OLF ODIN U5
OLF OTIS Y43
OLF MISS GUNNER W8

SUNNY VALLEY SARGENT 24S
SCARLET OF SEVEN-M 203A
SAUGEEN SHIRAZ 41X

EPDS~ CE:15.3 BW:-0.2 WW:70 YW:100.9 MILK:32.4

Owen Syverson
Territory Manager

1475 Wheatland Trail
Strathmore, AB T1P 1K1

Cell: (403) 501-9102
Fax: (403) 378-3681
Toll Free: (800) 266-9365
Res: (403) 378-3560

e-mail: owen.syverson@nutreco.ca



Landmark Feeds



Landmark Feeds

a Nutreco company

1163355 **SEVEN-M BONITA 24D** SML 24D

DOB: 2/1/2016 BW: 81 AWW: 592 AYW: 1079

SVS CAPTAIN MORGAN 11Z MR NLC UPGRADE U8676
 RF DEVILS TRIANGLE 408B SEVEN-M LADY BONITA 17B
 RF FLIRT 16X KOP MS BLACK BARON 161Z

EPDS~ CE:9.2 BW:2.1 WW:68.2 YW:98.8 MILK:22.8

1163788 **SEVEN-M BOOTIE CALL 41D** SML 41D

DOB: 2/8/2016 BW: 82 AWW: 530 AYW: 911

REMINGTON LOCK N LOAD 54U MR NLC UPGRADE U8676
 SWAN LAKE LOADED 99A SUN STAR RETROFLEX 99A
 MRL MISS 390X SUN STAR RETROFLEX 3R

EPDS~ CE:8.8 BW:1.4 WW:55.5 YW:91 MILK:21.9

1164502 **SEVEN-M BLK LICORICE 65D** SML 65D

DOB: 2/14/2016 BW: 91 AWW: 576 AYW: 902

REMINGTON LOCK N LOAD 54U BLACK BARON
 SWAN LAKE LOADED 99A KOP MS BLACK BARON 161Z
 MRL MISS 390X KOP MS KNIGHT 404R

EPDS~ CE:6.7 BW:3.7 WW:59.9 YW:92.5 MILK:22.4

1165001 **SEVEN-M MISS FERGIE 97D** SML 98D

DOB: 2/23/2016 BW: 98 AWW: 608 AYW: 1019

REMINGTON LOCK N LOAD 54U LBR RED CEDAR Y708
 SWAN LAKE LOADED 99A DOUBLE BAR D FERGIE 485A
 MRL MISS 390X DOUBLE BAR D FERGIE 52U

EPDS~ CE:2.8 BW:7.1 WW:73.7 YW:113.9 MILK:21

1165239 **RED SEVEN-M TALULA 104D** SML 104D



DOB: 2/27/2016 BW: 104 AWW: 692 AYW: 1002

MJ REDLANDS 1X SAUGEEN SCORPION 31S
MJ RED LANDER 91Z SAUGEEN XEA 42X
MJ RED SALSA 269S SAUGEEN REA 3R

EPDS~ CE:2.4 BW:7.7 WW:74.4 YW:104.5 MILK:25.8

1166956 **SEVEN-M MISS MILLIE 135D** SML 135D



DOB: 3/12/2016 BW: 90 AWW: 618 AYW: 966

REMINGTON LOCK N LOAD 54U BLACK BARON
SWAN LAKE LOADED 99A KOP MS BLACK BARON 243Z
MRL MISS 390X KOP MS TRACKER 101W

EPDS~ CE:7.6 BW:4 WW:62.2 YW:100.4 MILK:24.3

1166957 **SEVEN-M MISS FINESSE 140D** SML 140D



DOB: 3/13/2016 BW: 61 AWW: 605 AYW: 982

SVS CAPTAIN MORGAN 11Z JF AMERICAN PRIDE 0987X
RF DEVILS TRIANGLE 408B DOUBLE BAR D FINESSE 467B
RF FLIRT 16X DOUBLE BAR D FINESSE 401W

EPDS~ CE:15 BW:-1.3 WW:60.5 YW:88.1 MILK:24

1166958 **SEVEN-M MISS CENTERFOLD 152D** SML 152D



DOB: 3/21/2016 BW: 72 AWW: 638 AYW: 980

REMINGTON LOCK N LOAD 54U JS SURE BET 4T
SWAN LAKE LOADED 99A RF COVER GIRL 315A
MRL MISS 390X DEEG MS COVER GIRL 25Y

EPDS~ CE:8.7 BW:2.5 WW:65.3 YW:99.8 MILK:20.6

1181108 **SEVEN-M POLKA DOT 159D** SML 159D

DOB: 4/4/2016 BW: 100 AWW: 680 AYW: 1120

REMINGTON LOCK N LOAD 54U

TNT TANKER U263

SWAN LAKE LOADED 99A

DOUBLE BAR D PEARL 87Y

MRL MISS 390X

DOUBLE BAR D PEARL 246U

EPDS~ CE:5.7 BW:3.6 WW:69 YW:107.8 MILK:20.3



LAME BULL = NO BULL

Getting cows bred on time is pivotal to the success of every cow-calf operation. And the most vital animal on the breeding field often gets the least consideration ... the bull.

Producers spend a great deal of time and money ensuring that the bulls they purchase have the right genetics for their cow herd. Many producers also recognize the value of an annual breeding soundness examination before the breeding season. But far less attention is paid to protecting these reproductive assets from a common infection that can undermine a successful breeding season.

Footrot is caused by the bacterium *Fusobacterium necrophorum*, an organism commonly found in the digestive tract of cattle. Any surface contaminated with manure may contain this organism. *F. necrophorum* can also escape from the rumen and circulate internally. An animal's environment plays a role in the development of footrot. Wet, muddy conditions or rough, abrasive terrain can cut or bruise the skin between the toes, creating the right conditions for the bacteria to multiply and cause disease.

The first signs of footrot are swelling just above the hoof and lameness in the affected foot. As the swelling increases, the toes spread apart and the animal becomes increasingly lame. Ultimately,

FUSOGARD®

the skin between the toes dies and breaks open, releasing infected debris and the foul odour associated with footrot. Decreased appetite and weight loss are secondary effects. Although rarely fatal, the condition can result in tendon sheath infections and arthritis if not treated promptly. Furthermore, footrot is contagious because the infective material released from the feet of affected animals increases the likelihood that other animals will be exposed.

The cost of footrot is much higher than the price of treatment. A lame bull, especially one that is lame on a hind foot, is unlikely to breed many cows. If he quits working, even for part of the breeding season, you may be faced with late and open cows in the fall. That means more culled animals, more late-born calves and shorter calving to breeding intervals for your cows next spring. The good news for producers is that a footrot vaccination is available that can decrease the incidence and severity of this disease in your herd.

Combined with a sound nutrition program and good health management practices, footrot vaccination can help keep the upcoming breeding season on track. Talk to your herd veterinarian about prevention strategies for your herd.

FUSOGARD® | POWERFUL | ECONOMICAL | PROACTIVE

1161322 **RED SEVEN-M HIGH ROLLER 5D** SML 5D



DOB: 1/4/2016 BW: AWW: 616 AYW: 1079

SVS CAPTAIN MORGAN 11Z SIX SENTINAL 478Y
RF DEVILS TRIANGLE 408B SEVEN-M RED GRACE 56B
RF FLIRT 16X SEVEN-M P YETTA 1210Y

EPDS~ CE:13.7 BW:0 WW:59.5 YW:86.8 MILK:25.6

A soggy 3/4 simmental bull sired by our simmental heifer bull.

1164503 **SEVEN-M PLAYBOY 70D** SML 70D



DOB: 2/14/2016 BW: AWW: 671 AYW: 1311

REMINGTON LOCK N LOAD 54U RF DOUBLE UP 37W
SWAN LAKE LOADED 99A MISS DEBBIE 141Z
MRL MISS 390X REGISTERED RED ANGUS

EPDS~ CE:6 BW:2.6 WW:61 YW:93.8 MILK:20

A stretchy 3/4 simmental bull sired by our Loaded herdsire.

SEVEN-M BABE MAGNET 158D SML 158D



DOB: 4/1/2016 BW: 78 AWW: 663 AYW: 1274

SVS CAPTAIN MORGAN 11Z S A V HARVESTOR 0338
RF DEVILS TRIANGLE 408B AVELYN BABE 707'13
RF FLIRT 16X FOXTAIL BABE 55'05

EPDS~ CE: BW: WW: YW: MILK:

1/2 Simmental bull sired by our simmental heifer bull.

SEVEN-M BULL 161D SML 161D

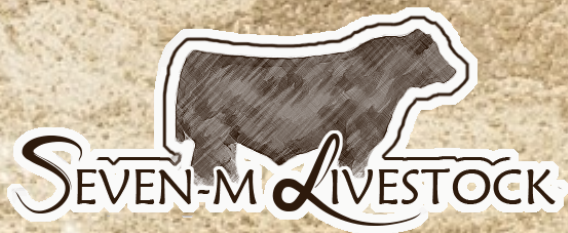


DOB: 4/8/2016 BW: 67 AWW: 548 AYW: 1128

SVS CAPTAIN MORGAN 11Z SANDY BAR GRASSLANDS 94T
RF DEVILS TRIANGLE 408B MAYFLOWER OF PEAK DOT 422Y
RF FLIRT 16X MAYFLOWER OF PEAK DOT 407S

EPDS~ CE: BW: WW: YW: MILK:

1/2 Simmental bull had a twin heifer - they were sired by our simmental heifer bull.



Box 688
Duchess, Alberta
T0J 0Z0
(403)378-3809
FAX(403)378-4206

www.sevenm.ca