

ELEVENTH ANNUAL
BLUE COLLAR
BULL SALE



Saturday, April 8, 2017
Heartland Livestock
Yorkton, SK 1:00 PM

WELCOME

The Blue Collar Sale group has established themselves as a source of Black Angus genetics that serve their customers well with a top quality product.

Powerful, stout bulls chocked full of performance that sport great dispositions, lots of hair while remaining sound for years. A key focus on the basic ingredients that are necessary for any successful operation large or small.

These family run operations work at improving the genetics offered to you the buyer throughout the year, as well all know managing the cattle is a year round event. The genetic pool on offer is the result of many hours and miles spent searching the country to find the next herd sire or female that will further the program, these breeders take this very serious as it for their benefit and yours.

Join us Friday afternoon at Heartland Livestock to peruse the offering and visit with the consignors in a one on one basis to discuss the offering and enjoy some pre sale hospitality. The bulls are displayed in big spacious pens for your viewing pleasure. Be sure to join us for lunch on Saturday before the sale!

If you have any questions regarding the offering feel welcome to contact any of the consignors, sales staff or myself at Castlerock Marketing we would love to hear from you to discuss this excellent group of bulls.

See you sale day!

Shane Castle
Castlerock Marketing

SALE MANAGEMENT CASTLEROCK MARKETING

Shane Castle
Cell: 306.741.7485
Email: castlerock.mktg@sasktel.net
Dean McAvoy 306-784-2241



Northern View Angus



Parkwood Farm



Swan Hills Ranch

Watch and Bid Online

Can't make it to the sale?
Internet Bidding Available.

To view this sale visit www.dlms.ca, Fill out the registration form located under registration and sign-up for your free user account and select a username and password.

BIDDERS - To be approved as a bidder, Log in to dlms.ca and click BUYER APPROVAL tab, select the sale you are interested in bidding at and click sign up.

For more information
Call DLMS Reps:

Whitney Bosovich 780.991-3025

Mark Shologan 780.699.5082

DLMS
www.dlms.ca

BLUE COLLAR BULL SALE

Saturday, April 8, 2017

Heartland Livestock, Yorkton, SK • 1:00 P.M.

SALE DAY PHONES

Shane: 306-741-7485

Troy: 306-728-8911

Scott B: 306-621-3638

Scott T: 204-734-0210

Heartland: 306-783-9437 • 306-786-3634

CONSIGNORS

NORTHERN VIEW ANGUS

Box 211, Neudorf, SK S0A 2T0

Troy, Amy, Bret, Alexis & Talon Frick

306-728-3515 • Cell 306-728-8911

Alvin & Marlene Frick: 306-728-3295

northernviewangus@imagewireless.ca

PARKWOOD FARM

Box 48, RR 1, Yorkton, SK S3N 2V3

Jack & Joyce 306-782-7112

Scott, Mandy, Katie, Landon & Macy Burkell

306-783-7986 • Cell 306-621-3638

s.a.burkell@sasktel.net

SWAN HILL RANCH

Box 2471, Swan River, MB R0L 1Z0

Scott, Cindy, Martina, Robyn & Parker Tibble

Cell 204-734-0210

Ranch 204-539-2570

stibblem@gmail.com

View the Catalogue Online at:

www.buyagro.com

www.castlerockmarketing.com

View the Sale Bull Videos Online at: www.cattlevideos.ca

Find us on Facebook



2 Buyers Draws

April 8, 2017

OFFERING:
60 BLACK ANGUS BULLS
3 ANGUS INFLUENCE BULLS
4 BLACK ANGUS FEMALES
40 ANGUS INFLUENCE FEMALES

View the bulls Friday, April 7

from 6:30-8:00 PM

Saturday, April 8

Lunch at 11:00 AM

SALE TIME 1:00 PM

Auctioneer:

Clayton Hawryluk, Heartland.....306-783-9437
.....306-621-3824

Blockman:

Shane Castle.....306-741-7485

Ringmen:

Harvey Exner.....306-621-5486

Hugh Elliot.....306-230-7805

Brad Knutson306-595-4454 or 306-549-7637

Lynn Stehr.....204-734-8990

Hotel Accommodations:

Days Inn, Yorkton.....306-783-3297

Livestock Insurance:

Farrell Agencies.....306-783-4477

Sale Consultant:

Brian Rathgeber.....306-621-5421

DLMS:

Whitney Bosovich.....780-991-3025

Green Tag Program:

Canadian Angus Association.....403-571-3580

Blue Collar Herd Person:

Mikaela Schick.....306-730-8274

Sale Consultant:

Mr. Jim NugentHome: 204-476-2480 Cell: 204-841-0113
Box 28, Neepawa, SK R0J 1H0

Mr. Jim Nugent has returned as a consultant to our sale. Mr. Nugent has a great deal of experience at analyzing bulls for 23 years. He has purchased bulls for the PFRA and cattlemen alike. In his purchasing of some 18000 bulls he has gained valuable expertise to help you carefully select your bulls if you are unable to attend the sale or are looking for a respected second opinion. Please feel free to give him a call.



We would like to thank the following sponsors...

Blair's Crop and Livestock Solutions - \$150 Sponsorship to the sale day meal.

WELCOME TO THE BLUE COLLAR BULL SALE

Welcome to the 11th Annual Blue Collar Bull Sale. We hope that all has gone well for you and your family in the past twelve months.

This time of year offers the excitement of bull sale season, the new crop of calves from new and proven sires and the anticipation of the upcoming breeding season. We were promised a cold and nasty winter but that, to this point, has not developed.

Agriculture continues to be a rewarding and fulfilling occupation but it is also frustrating and uncertain. As always world markets, weather, political climates, labour and transportation are things that we cannot control. However, we are able to control what we do at home. When it comes to cattle, we can control on our herd health, programming and nutrition we provide for our cattle and the direction we want our breeding programs to go.

The direction you want your breeding program to go is something we believe that the Blue Collar can help you with. We believe we are like a one stop shopping store. We have a variety of sire groups represented-new and proven sires. There are calving ease and power bulls. In all cases the bulls and females come from proven and consistent sire groups and proven, feminine and productive Angus cow families.

Our cow herds are built on years of careful selection and culling for fertility, structure and performance. We all have extensive AI and/or embryo programs. Each of us research and plan our breeding programs to strive to improve our own herds but also to provide you with the best possible genetics we can in order to present you with "Affordable, Honest, Hardworking cattle that'll get'er done."

Throughout the catalogue you will find an entire host of information to aid you in your bull or heifer selection. There are footnotes, pictures, pedigrees, weights, sire and dam information... Please feel free to contact any one of us for more information or stop by our farms to view the bulls prior to the sale.

The Blue Collar Bull Sale Group would like to thank the following for their contribution to the success of our sale:

- Everyone who attended last year's sale, our bidders and buyers.
- All our friends and family who helped us before, during and after the sale.
- All our sponsors-We do business with all of them and recommend you give them a try, too.
- To Castlerock Marketing, Jim Nugent, Brad Knutson, Lynn Stehr, Hugh Elliot and the Heartland Staff and all our friends for their work on our sale.

We believe that we have a solid and supportive team who can work to make sure that you are well taken care of and your livestock needs are met. Please contact any member of the Blue Collar Group or the sales staff with any questions to help you select the animals to meet your needs.

Once again we are going to start our sale with a groups of 3 or 5 commercial heifers. Many of these heifers come from bulls that have been purchased from the Bull Collar consignors. Look to increase the productivity of your cow herd with these quality genetics.

We would also like to make you aware that Farrell Agencies will be on hand sale day to assist you with the insurance of your purchases. As breeders we will support you, the buyer, in every way we can to ensure our cattle work. However, there are unforeseen events which occur, like illness, injury, or death, which the buyer and seller cannot control or guarantee. For situations like this there is insurance. We strongly recommend you insure all your livestock purchases but want you to insure any cattle which will be going home to our respective farms for a while. Please refer to back of catalogue for all sale conditions.

You will note the J Square S Angus is no longer part of the sale group. Their participation in and contributions to our sale will be missed. Being the progressive breeders that they are we know they will continue to be successful in this industry. We wish Jordan and his family all the best.

There are more and more Blue Collar Cattle out there working for folks. We take pride in the fact that we have an increase number of repeat customers. We truly enjoy the connections and socialization which is involved with our customers and the cattle business. We would like to invite you to give us a call or drop in for a visit any time.

We would like to welcome you to the 11th Annual Blue Collar Bull Sale. Cattle will be arriving at Heartland Thursday and may be viewed anytime until sale time. Consider this your invitation to come to Heartland in Yorkton on Friday, April 7th from 6:30-8:00 PM for a viewing of the cattle and fellowship and to the sale on Saturday, April 8th at 11:00 AM for lunch and to view the cattle and for the sale at 1:00 PM.

See you at the Sale
Blue Collar Sale Group

NORTHERN VIEW ANGUS

We have really worked on not pushing our bulls. Feeding them a ration of 1.5% of their body weight in grain/supplement and the balance of their ration with millet hay. We have to monitor the feed intake of our bulls to ensure no overfeeding and to promote a sound growing bull that will work for you for the long term. They have free choice mega lix tubs to promote scrotal circumference, semen quality and structural soundness. The bulls are raised in large pens and/or pasture areas to allow for ample room to wander, rumble and explore.

I have catalogued our bulls in sire groups and in numerical order of when they were born within that group. For example, in the first sire group of Mohnen Substantial. The oldest bull is first and the youngest bull is last of that sire group. We have entered larger sire groups this year in hopes that you will have a better representation of what each sire is able to do.

We are retaining a 1/3 semen interest in all our bulls unless otherwise stated. This does not impact you owning the bull, the rights to walk the bull or the salvage value on the bull. All it means that if at some point we would like to draw semen for in herd use we would arrange at your convenience and our expense to do so.



Yorkton 4 H



Bieber Trucking and Mark's Agency
with Alexis and Ranger



Grand Champion Steer
Alexis with Ranger



Century Glass
The Priebe's with Talon and Ace

Thank You to Bieber Trucking, - Duff and Mark's Agency - Melville
for purchasing Alexis's steer, Ranger and Century Glass - Bryon, Raelene, Avery and Jenaye
Priebe for purchasing Talon's steer, Ace and Alexis's steer, Spec.

NORTHERN VIEW... Mohnen **Substantial 272**



Top 1% for birth weight, top 5% for yearling weight and top 10% for weaning weight. Substantial has extreme calving ease numbers with exceptional growth in his calves. His unique pedigree is packed with maternal power and makes his service very flexible to which females he can be mated to. There are only 17 animals registered in Canada from substantial. We had 3 bulls and a heifer from our AI to him. Sadly in Mid February a very good brother got his head caught in a gate and died. Each one has great shape, super weights and structurally sound and very appealing. We will be using him again this year for our calving ease part of our program.

Lot 1



Northern View **Bar Down 70D**

Lot 1 1901441 FTA 70D 01/01/2016 Male

This bull is a shapely, stylish calving ease fellow. He has a 68 pound birth weight and a -0.2 birth EPD. He has grown and performed well. His dam, a Teddy daughter, worked hard on this calf to produce a high weaning weight bull. I am drawn to this bull when he is in the pen due to his muscle pattern and style. Bar Down 70D has great shape and is very clean fronted. **Recommended for heifers.**

EPD	BW	WW	YW	Milk	TM
-0.2	49	89	19	44	
ACC	BW	Adj. 205	Adj. 365		
	68	829	1270		

BENFIELD SUBSTANCE 8506
MOHNEN SUBSTANTIAL 272 1837234
MOHNEN GLYN MAWR ELBA 1758

NORTHERN VIEW NET WORTH 104Y
NORTHERN VIEW BELLE 107B
WWF AMBUSH BELLE 166P

HA IMAGE MAKER 0415
BENFIELD EDELLA 1105
LT TERRITORY 5824 OF EA
MOHNEN GLYN MAWR ELBA 1345
BELL NET RETURN 3U
NORTHERN VIEW TIBBIE 71R
BAD LANDS AMBUSH 45M
WWF ULTRAVOX BELLE 28M

Northern View **Bar Down 77D**

Lot 2 1901448 FTA 77D 02/01/2016 Male

Bar Down 77D is a deep, long sided and powerful specimen. He catches my eye each time I tour through the bulls. His mother is an excellent Rachis daughter. She has raised one great calf after another. The quality of 81X's feet, udder and legs are second to none. We have a maternal sister, to 77D, that calved out this spring. Rosie, we call her, has amazing temperament. 77D is no different. A power bull with calving ease numbers with strong maternal influence and a pail full of nuts. This bull had the second highest 365 day gain ranking in our pen of bulls. As you can see his weights demonstrate he has great performance. This bull has depth, width and length. Bar Down 77D has as good a foot under him as you will find. Take the time to explore this bull, his unique outcross pedigree and his numbers closely. Bar Down 77D is a very complete bull and will should not disappoint to many folks come sale day. **Should work on Heifers.**

EPD	BW	WW	YW	Milk	TM
0.3	51	90	21	46	
ACC	BW	Adj. 205	Adj. 365		
	88	856	1392		

BENFIELD SUBSTANCE 8506
MOHNEN SUBSTANTIAL 272 1837234
MOHNEN GLYN MAWR ELBA 1758

REMITALL H RACHIS 21R
NORTHERN VIEW MISSIE 81X 1552546
NORTHERN VIEW MISSIE 84M

HA IMAGE MAKER 0415
BENFIELD EDELLA 1105
LT TERRITORY 5824 OF EA
MOHNEN GLYN MAWR ELBA 1345
REMITALL NIGHTHAWK 37N
HENDERSON MISSIE 32'02
DURLOWE MAGIC 62K
CALLAMERE MISSIE 23J

Lot 2



Northern View Missie 81X Dam of Lot 2



NORTHERN VIEW...



Vision **Unanimous**

We have used Unanimous in our herd over the last two years. His unique outcross pedigree, phenotype, excellent scrotal potential and powerful weight numbers at weaning and yearling have attracted us to him. His bulls and heifers are equally impressive. They are deep bodied, long bodied and, as all reports are on Unanimous himself, have great feet and solid leg structure. The progeny we have model very good feet and legs too. We used 20 straws of semen in our herd last spring and have a 16 calves on the ground. They all look pretty cool. We calved out our lone Unanimous daughter she is a gorgeous two year old, has a fantastic udder and good milk as her Thunder bull calf is doing great. We also are used a Unanimous son and his calves all come out easy, have great vigour and are doing real well. The Unanimous genetics come highly recommended from us based on our experience with his progeny.

Lot 3



Northern View **Grand Slam 98D**

Lot 3 1901466 FTA 98D 13/01/2016 Male

Grand Slam 98D comes from the consistent and powerful princess cow family. This moderate bull has balanced numbers and growth. This bull has had 3 maternal brothers go through the Blue Collar-Dale Minhinnick from Invermay bought last year's offering. We have 2 maternal sisters working in our herd. Princess 95X is the grandmother to our lot 24 bull. We have a full brother to this bull on the ground. He looks like he will be pretty neat too.

EPD	BW	WW	YW	Milk	TM
3.0	50	95	23	48	
ACC	BW	Adj. 205	Adj. 365		
85	868	1325			

VISIONTOPLINE ROYAL STOCKMAN
VISION UNANIMOUS 1418 1701532
VISION EDELLA 665

SKYE-VIEW BEEF MAKER 5T
NORTHERN VIEW PRINCESS 95X 1552560
NORTHERN VIEW PRINCESS 74S

GAMBLES ROYAL FLUSH
LAGRAND PRIDE 7140
BOYD ON TARGET 1083
VISION EDELLA 337
BOYD BEEF MAKER 3069
SKYE-VIEW QUEEN 4M
NORTHERN VIEW FLYING ELIXIR70M
WILBAR PRINCESS 345K

Northern View **Grand Slam 107D**

Lot 4 1901474 FTA 107D 18/01/2016 Male

This is a very attractive, impressively muscle pattern and structurally sound bull we took out to Agribition this year. He placed second in his class to the Senior Champion bull calf that day. He possesses calving ease numbers and style but is packed with powerful growth punch. Princess 103A is a fabulous female with great numbers, beautiful udder and feet and is tremendously angular with great lines. Her first calf is a daughter we have retained and is doing well with her first calf. Grand Slam 107D should calve easy and, with weaning and yearling weights in the top 2% and 5% of the breed, his progeny should really grow. He gained 3.43lbs to his yearling weight. This bull was considered our best bull by some very astute cattle folks this past summer. Recommended for heifers.

EPD	BW	WW	YW	Milk	TM
0.9	60	109	18	48	
ACC	BW	Adj. 205	Adj. 365		
80	938	1487			

VISIONTOPLINE ROYAL STOCKMAN
VISION UNANIMOUS 1418 1701532
VISION EDELLA 665

CONNEALY THUNDER
NORTHERN VIEW PRINCESS 103A 1744144
NORTHERN VIEW PRINCESS 73U

GAMBLES ROYAL FLUSH
LAGRAND PRIDE 7140
BOYD ON TARGET 1083
VISION EDELLA 337
BALDRIDGE KABOOM K243 KCF
PARKA OF CONANGA 241
NORTHERN VIEW QUANTUM 86P
WILBAR PRINCESS 345K

Lot 4



107D at CWA

Northview Princess 103A
Dam of Lot 4

April 8, 2017

NORTHERN VIEW ANGUS

NORTHERN VIEW...

Creekview Ideal 4Y

This is a sire we own with Bell Angus of Pense. Ideal 4Y was admired by numerous breeders at Ken's place in August at the Heart of the South Angus Tour. Ideal 4Y is a broad, deep sided long bull with lots of testicle. His progeny are very impressive for their larger tops, deep sides, structural soundness and eye appeal. 4Y's consistency and production have allowed us to use him on our first calvers and later cows we are trying to catch back up to earlier calving. In using 4Y we have not compromised any calving ease, performance or maternal qualities. His bulls are competing well with all the other sire groups in this catalogue. The Ideal bulls are selected as calving ease specialists each year at this sale. You will notice that the Ideal's have true calving ease heads and are very smooth shouldered.

Lot 5



Northern View Tool Man 80D

Lot 5 1901445 FTA 80D 02/01/2016 Male

Tool Man 80D is a nicely made calving ease bull that should provide vigorous lively calves that will grow well to weaning. Duchess 84A appears to be a young cow with a solid future at Northern View. The grandmother to this bull is the mother to lot 12. 84A had a stunning special focus daughter sell to Tool Man Angus-Wolseley at the Touch of Class sale this past fall. She has calved out and is doing extremely well. Look to 80D to breed on heifers.

Recommended for heifers.

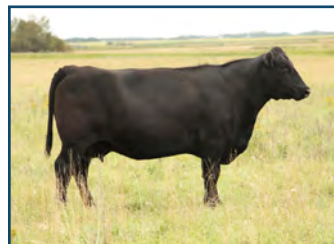
EPD	BW	WW	YW	Milk	TM
0.3	39	66	17	37	

ACC	BW	Adj. 205	Adj. 365
75	798	1311	

VALLEY BLOSSOM IDEAL 1W
CREEKVIEW IDEAL 4Y 1604060
CREEKVIEW PRIDE 207T

WILL ROLE MODEL
NORTHERN VIEW DUCHESS 84A 1744128
SOO LINE DUCHESS 7266

SANDY BAR IDEAL 18S
VALLEY BLOSSOM BLACKCAP 712P
SOO LINE HOOSIER 5033
CREEKVIEW PRIDE 203R
CONNEALY PACKER 547
WILL HENRIETTA PRIDE 113A
CUDLOBE YELLOWSTONE 80M
SANDY BAR DUCHESS 96J



Northern View Duchess 84A
Dam of Lot 5

Lot 6



Northern View Tool Man 104D

Lot 6 1901473 TTF 104D 17/01/2016 Male

A bull with a straight Canadian pedigree. Tool Man 104D is equipped with calving ease weight and EPD's and then the added bonus of great growth. I truly love this bull's shape, style and hair coat. This bull is halter broke. He was a member of our champion pen of bulls at the 2016 Harvest Showdown in Yorkton. A maternal sister is working in our herd and another one sold to Robyn Tibble in last year's Blue Collar Sale. A powerful and stylish bull that should work well on heifers. He is sold as a commercial bull due to the white on his navel.

Recommended for heifers.

EPD	BW	WW	YW	Milk	TM
-0.4	49	75	23	48	

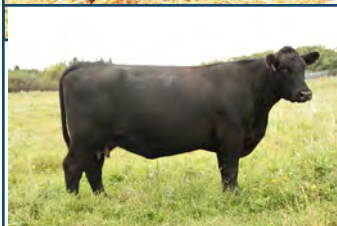
ACC	BW	Adj. 205	Adj. 365
70	877	1340	

VALLEY BLOSSOM IDEAL 1W
CREEKVIEW IDEAL 4Y 1604060
CREEKVIEW PRIDE 207T

PRAIRIELANE 6018-9011
PRAIRIELANE 9011 BEA 1166 1621021
PRAIRIELANE 7026 BEA 9051

SANDY BAR IDEAL 18S
VALLEY BLOSSOM BLACKCAP 712P
SOO LINE HOOSIER 5033
CREEKVIEW PRIDE 203R
PRAIRIELANE FINAL ANSWER 6018
PRAIRIELANE 5057 ESTELLE 7071
PRAIRIELANE 5057-7026
PRAIRIELANE 0051 BEA 4140

Prairielane 911 BEA 1166
Dam of Lot 6



NORTHERN VIEW ANGUS

Blue Collar Bull Sale, Yorkton, SK

NORTHERN VIEW...

Northern View Tool Man 106D

Lot 7 1950978 FTA 106D 18/01/2016 Male

VALLEY BLOSSOM IDEAL 1W
CREEKVIEW IDEAL 4Y 1604060
CREEKVIEW PRIDE 207T

NORTHERN VIEW UPWARD 93Y
NORTHERN VIEW ATALANTA 72A 1744120
NORTHERN VIEW ATALANTA 88X

SANDY BAR IDEAL 18S
VALLEY BLOSSOM BLACKCAP 712P
SOO LINE HOOSIER 5033
CREEKVIEW PRIDE 203R
SITZ UPWARD 307R
SOO LINE DUCHESS 7266
BELL NET RETURN 3U
NORTHERN VIEW ATALANTA 78T

EPD	BW	WW	YW	Milk	TM	ACC	BW	Adj. 205	Adj. 365
0.9	47	81	21	45		80	760	1237	

Tool Man 106D is a deep sided long bull that has super genetics on both sides of his pedigree. His mother 72A is a powerful and big volume cow. His grandmother is the mother to our lot 13 bull. This bull has the birth weight and EPD's to make him an acceptable for calving ease.

Recommended for heifers.

Lot 7



Northern View Tool Man 113D

Lot 8 1901480 FTA 113D 01/02/2016 Male

VALLEY BLOSSOM IDEAL 1W
CREEKVIEW IDEAL 4Y 1604060
CREEKVIEW PRIDE 207T

CONNEALY THUNDER
NORTHERN VIEW LUCY 84Z 1675537
NORTHERN VIEW LUCY 86U

SANDY BAR IDEAL 18S
VALLEY BLOSSOM BLACKCAP 712P
SOO LINE HOOSIER 5033
CREEKVIEW PRIDE 203R
BALDRIDGE KABOOM K243 KCF
PARKA OF CONANGA 241
NORTHERN VIEW QUANTUM 86P
NORTHERN VIEW LUCY 83R

EPD	BW	WW	YW	Milk	TM	ACC	BW	Adj. 205	Adj. 365
-1.8	40	72	18	38		70	819	1223	

If you have a hankering for light birth weight calves that really grow this may be the bull for you. He is out of an attractive Thunder daughter. Over 10% of our cow herd are Thunder females. We also have three Thunder yearlings in our replacement pen. Retaining and utilizing these Thunder daughters has been by design for us. They are deep, powerful, feminine females with excellent udders and feet. Look to keep quality females from a bull with a Thunder mother. There is a maternal sister working at Mike Belof's -White City and one in our herd.

Recommended for heifers.

Lot 8



Northern View Lazy 84Z
Dam of Lot 8



Northern View Tool Man 117D

Lot 9 1901482 FTA 117D 02/02/2016 Male

VALLEY BLOSSOM IDEAL 1W
CREEKVIEW IDEAL 4Y 1604060
CREEKVIEW PRIDE 207T

CFS BISMARCK 11X
NORTHERN VIEW BEAUTY 91A 1744134
NORTHERN VIEW BEAUTY 96X

SANDY BAR IDEAL 18S
VALLEY BLOSSOM BLACKCAP 712P
SOO LINE HOOSIER 5033
CREEKVIEW PRIDE 203R
S A V BISMARCK 5682
CFS LADY 8U
S A V PIONEER 7301
MV F BEAUTY 345T

EPD	BW	WW	YW	Milk	TM	ACC	BW	Adj. 205	Adj. 365
1.7	42	70	21	42		86	846	1213	

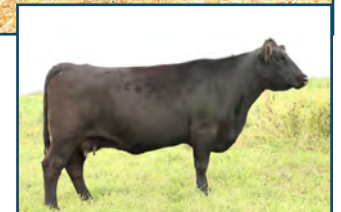
Another heifer friendly bull out of an excellent young cow in 91A. Beauty 91A had our high selling bull to Corvet Angus-Corey Jones in our last year's sale. This cow had a maternal sister sell in the Keystone Classic to Blair's Ag last fall. I love this cow and cow family. The grandmother to this bull is the dam to lot 14.

Recommended for heifers.

Lot 9



Northern View Beauty 91A
Dam of Lot 9



NORTHERN VIEW...

Lot 10



Northern View **Tool Man** 129D

Lot 10 1901491 FTA 129D 17/02/2016 Male

VALLEY BLOSSOM IDEAL 1W
CREEKVIEW IDEAL 4Y 1604060
CREEKVIEW PRIDE 207T

WILLOWVIEW PIONEER 6X
NORTHERN VIEW LUCY 125A 1894343
NORTHERN VIEW LUCY 84Z

SANDY BAR IDEAL 18S
VALLEY BLOSSOM BLACKCAP 712P
SOO LINE HOOSIER 5033
CREEKVIEW PRIDE 203R
S A V PIONEER 7301
WILLOWVIEW GRAND JUNE 36P
CONNEALY THUNDER
NORTHERN VIEW LUCY 86U

EPD	BW	WW	YW	Milk	TM	ACC	BW	Adj. 205	Adj. 365
-0.9	38	64	17	35		78	801	1205	

This mid-February bull should be a calving ease specialist. He is a bull from a good young cow. The Lucy cow family have been a mainstay at NV. Excellent calving ease genetics with Pioneer, Thunder and Ideal in the pedigree. Closely related to our lot8 bull. Maternal brother sold in last year's Blue Collar to Irving Angus-Pense, SK. **Recommended for heifers.**



Connealy **Consensus** 7229

Consensus is a bull which we choose for some unique genetics for us and want some genetic to take our program in a bit of a different direction. He is a bull that offers performance, style and highly functional cattle. The females from Consensus that we have in our herd are nicely uddered and hard working. We are happy with both the bulls and heifers. We had two Consensus heifer calves in our Grand Champion Pen of Three futurity heifers at the Harvest Showdown in Yorkton. If you are looking to put some jam in your herd be sure to closely evaluate a Consensus son.

Lot 11



Northern View **Compass** 91D

Lot 11 1901459 FTA 91D 08/01/2016 Male

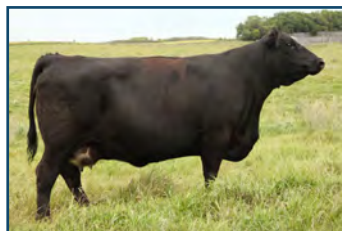
CONNEALY CONSENSUS
CONNEALY CONSENSUS 7229 1593730
BLUE LILLY OF CONANGA 16

B C MATRIX 4132
NORTHERN VIEW EILEENMERE 73Z 1675530
NORTHERN VIEW EILEENMERE 89R

KMK ALLIANCE 6595 187
BLINDA OF CONANGA 004
WOODHILL ADMIRAL 77K
BLUE CASH OF CONANGA 6020
O C C EMBLAZON 854E
CAF PURE PRIDE EXT 99
EASTONDALE RIGHT TIME 62'03
EASTONDALE EILEENMERE 12'03

EPD	BW	WW	YW	Milk	TM	ACC	BW	Adj. 205	Adj. 365
-0.8	44	77	21	43		75	820	1271	

If you want a bull from a breed leading sire and an awesome foundational cow then here is your opportunity. When you breed a great sire and a gorgeous cow you should get something pretty darn nice. Compass 91D is a darn nice bull. His mother is a deep, attractive and structurally sound female. She has had 3 bull calves in a row and just had a Cutting Edge son in January. This is a cow that we are proud to show anyone who comes by the farm. Compass 91D is a bull with calving ease numbers. As a matter of fact his birth EPD is in the top 1% of the breed. He also adds shape and style with adequate performance. **Recommended for heifers.**



Northern View Eileenmere 73Z
Dam of Lot 11

NORTHERN VIEW...

Lot 12



Well if you want to have a bull out of a very good cow that has produced extremely well for all 8 of her calves then here is the bull. Duchess 266T produces both bulls and heifers with everything you want in an Angus animal. She has a daughter in the donor program at Outlaw Coulee Angus. The full brother to 103D sold to Wayne Bircham of Piapot, SK in last year's Blue Collar. This bull gets better and better each time I look at him. I have analyzed him in the corral, at the feed bunk and when he got his hair cut. I have checked out his feet, scrotal development, top... everything from head to toe-his is as good a bull as we have raised. A really impressive loin on this yearling. His moderate birth weight and solid yearling and weaning weights should produce some high performing calves. He gained 3.43lbs per day to his yearling weight. This bull is halter broke. Compass 103D was in our Grand Champion Pen of Bulls at Harvest Showdown in Yorkton this past fall. We believe that this is a bull that will can set your breeding program in the right direction.

EPD	BW	WW	YW	Milk	TM
4.0	53	91	19	46	
ACC	BW	Adj. 205	Adj. 365		
	89	935	1483		

Northern View **Compass 103D**

Lot 12 1901472 FTA 103D 17/01/2016 Male

Soo Line Duchess 7266
Dam of Lot 12



CONNEALY CONSENSUS
CONNEALY CONSENSUS 7229 1593730
BLUE LILLY OF CONANGA 16

CUDLOBE YELLOWSTONE 80M
SOO LINE DUCHESS 7266 1376757
SANDY BAR DUCHESS 96J

KMK ALLIANCE 6595 I87
BLINDA OF CONANGA 004
WOODHILL ADMIRAL 77K
BLUE CASH OF CONANGA 6020
VERMILION YELLOWSTONE
STEVENSON ENCHANTRESS 425F
SANDY BAR BARDOLIER 82C
SANDY BAR DUCHESS 114E

Northern View **Compass 108D**

Lot 13 1901475 FTA 108D 19/01/2016 Male

CONNEALY CONSENSUS
CONNEALY CONSENSUS 7229 1593730
BLUE LILLY OF CONANGA 16

BELL NET RETURN 3U
NORTHERN VIEW ATALANTA 88X 1552553
NORTHERN VIEW ATALANTA 78T

KMK ALLIANCE 6595 I87
BLINDA OF CONANGA 004
WOODHILL ADMIRAL 77K
BLUE CASH OF CONANGA 6020
S A V NET WORTH 4200
BELL MS PRIDE 16L
NORTHERN VIEW FLYING ELIXIR70M
KBJ ATALANTA 583K

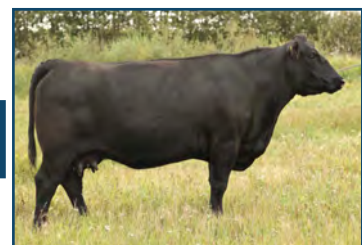
EPD	BW	WW	YW	Milk	TM	ACC	BW	Adj. 205	Adj. 365
3.5	56	97	24	52			90	943	1480

Power, style and functional are words that quickly come to mind when thinking of this Consensus Son. His dam, 88X has been solid in her first four calves. Compass 108C has a moderate birth weight and has gained 3.36 pounds per day to yearling weight. You will notice his weaning and yearling weights are quite impressive. If you are in need of a power performance bull be sure to find this bull. He style and structure will be very appealing to you too. This bull is halter broke. Compass 108D was in our Grand Champion Pen of Bulls at Harvest Showdown in Yorkton this past fall. A maternal sister is owned with Swan Hills Ranch and Venture Farms bought a maternal Imprint brother at the 2015 Blue Collar. 108C will help chart the right course for your calves.

Lot 13



Northern View Atalanta 88X
Dam of Lot 13



NORTHERN VIEW...

Lot 14



Northern View **Compass 115D**

Lot 14 1936041 FTA 115D 02/02/2016 Male

Compass 115D is a neat bull out of a beautiful direct Pioneer daughter in 96X. She is the grandmother to our lot 9 bull. This bull has tremendous eye appeal and shape. He may not be the most powerful bull in our offering he does not compromise style, structure and maternal power. A paternal brother sold to Logan Martinson-LV Farms at Midale and last fall a gorgeous maternal daughter-73C sold to Blair's Ag at the Keystone Classic. Take a long hard look at 115D..

EPD	BW	WW	YW	Milk	TM
2.1	48	84	24	48	

ACC	BW	Adj. 205	Adj. 365
88	831	1234	

CONNELLY CONSENSUS
CONNELLY CONSENSUS 7229 1593730
BLUE LILLY OF CONANGA 16

S A V PIONEER 7301
NORTHERN VIEW BEAUTY 96X 1590090
MV F BEAUTY 345T

KMK ALLIANCE 6595 I87
BLINDA OF CONANGA 004
WOODHILL ADMIRAL 77K
BLUE CASH OF CONANGA 6020
S A V FINAL ANSWER 0035
S A V BLACKBIRD 5297
MV F FRONTIER 25P
BXB DORITO 14L



Northern View Beauty 96X
Dam of Lot 14

73C Maternal Sister to Lot 14



Skyebrook **New Fly 29Z**

New Fly 29Z is a bull we used for two years on heifers and then a third year on our mature cows in our heifer calf pasture. The bulls in this sale are from the third year mating. New Fly 29Z is a moderately made bull with sound structure and design. He had a great deal of thickness and good scrotal development. At the Parkland Pride Angus tour in August 2015, New Fly 29Z was in our main cow herd pasture. He was admired for his shape, style, depth and overall herd bull look.

Lot 15



Northern View **Rock Star 15D**

Lot 15 1901430 URZ 15D 19/02/2016 Male

SKYEBROOK FLY TRAVELER 8X
SKYEBROOK NEW FLY 29Z 1693992
SKYEBROOK GIRL 9W

WINDY WILLOWS ALLIANCE 36S
NORTHERN VIEW MAXINE 24X 1552208
NORTHERN VIEW MAXINE 20T

WHITESTONE FLY TRAVELER 3006
SKYE-VIEW ANGEL 4N
ROYAL NEW LEVEL 38R
NORTHERN VIEW GIRL 16P
SITZ ALLIANCE 6595
WWF STOCKMAN EUTHALLA 127J
DOUBLE D SMOKIE 21R
NORTHERN VIEW MAXINE 18P

EPD	BW	WW	YW	Milk	TM
3.4	33	56	17	34	

ACC	BW	Adj. 205	Adj. 365
90	842	1055	

You will appreciate the moderate and stylish nature of this bull. His mother is another 36S daughter. A maternal daughter sold to Lana and Dan Petherbridge in the 2015 Blue Collar.

NORTHERN VIEW...

Northern View Rock Star 128D

Lot 16 1901470 FTA 128D 16/02/2016 Male

An exciting mid-February bull from a very good cow in 81S. She has been a highly productive cow with this bull being the seventh one going through the Blue Collar. We also have two daughters working in our herd. 81S is a Ruth cow. The Ruth's have been one of our foundation cow families. This bull is a very deep sided and attractive bull. He has calving ease numbers in the top 10% of the breed. If you have a hankering for a bull with calving ease and performance this is your guy. Recommended for Heifers.

EPD	BW	WW	YW	Milk	TM
	0.3	30	58	24	39

ACC	BW	Adj. 205	Adj. 365
	80	855	1244

Northern View Ruth 81S
Dam of Lot 16

Lot 16



SKYEBROOK FLY TRAVELER 8X
SKYEBROOK NEW FLY 29Z 1693992
SKYEBROOK GIRL 9W

AA R REALLY WINDY 1205
NORTHERN VIEW RUTH 81S 1320010
NORTHERN VIEW RUTH 85P

WHITSTONE FLY TRAVELER 3006
SKYE-VIEW ANGEL 4N
ROYAL NEW LEVEL 38R
NORTHERN VIEW GIRL 16P
AA R WINDY RIDGE 362
AA R LADY KELTON 2170
SANDY BAR INNOVATOR 5M
CRESCENT CREEK RUTH 6F

Lot 17



Northern View Rock Star 141D

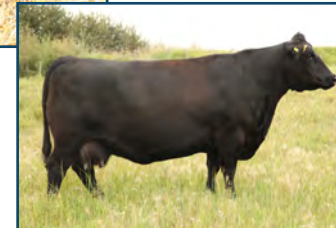
Lot 17 1901498 FTA 141D 31/03/2016 Male

A calving ease specialist out of one of our most eye appealing and sound cows. This gorgeous cow is as deep and big topped as they come plus a Thunder and a Ruth. This combination was destined for success. Now 141D is an end of March calf and is our youngest offering in the sale but we felt he has such number and eye appeal that he will be sought after by those looking for calving ease and a bull to produce females to retain in your herd. This bull will just be a year old at sale time but his gets better and better each day. He is smooth, deep with great hip and shape. The grandmother to Rock Star 141D is an elite dam. The Ruth cows have been fantastic for us. This bull shows what the Ruth's can do. His birth numbers are in the top 2% of the breed. Recommended for heifers.

EPD	BW	WW	YW	Milk	TM
	-1.1	32	64	21	37

ACC	BW	Adj. 205	Adj. 365
	70	817	1233

Northern View Ruth 70Y
Dam of Lot 17



SKYEBROOK FLY TRAVELER 8X
SKYEBROOK NEW FLY 29Z 1693992
SKYEBROOK GIRL 9W

CONNEALY THUNDER
NORTHERN VIEW RUTH 70Y 1623530
NORTHERN VIEW RUTH 84S

WHITSTONE FLY TRAVELER 3006
SKYE-VIEW ANGEL 4N
ROYAL NEW LEVEL 38R
NORTHERN VIEW GIRL 16P
BALDRIDGE KABOOM K243 KCF
PARKA OF CONANGA 241
HYLINE RIGHT WAY 781
CRESCENT CREEK RUTH 6F

NORTHERN VIEW...



Connealy **Thunder**

Well Thunder has been a bull that we have used for a number of years. He is well known for his calving ease, stylish progeny and structural soundness in his cattle. We have 11 daughters-10% of our cow herd- working. There are three more yearlings to be breed this spring. The Thunder daughters have been great cows for us. They milk well, have a great udder and are big volume cows with more than enough femininity. The dams to lots 4, 8 and 24 are Thunder daughters.

Lot 18



Northern View **Detonation** 120D

Lot 18 1936042 FTA 120D 15/01/2016 Male

BALDRIDGE KABOOM K243 KCF
CONNEALY THUNDER 1385922
PARKA OF CONANGA 241

COLE CREEK BLACK CEDAR 46P
BLACK CREEK BLACKCAP 415B 1786788
EASTONDALE BLACKCAP 82'12

JAUER 353 TRAVELER 589 27
PLEASANTA OF CONANGA 736
BON VIEW BANDO 598
PARTINA OF CONANGA 6237
C H QUANTUM 6247
COLE CREEK CLOVA JUANADA 67
MINBURN MAIN EVENT 40W
EASTONDALE BLACKCAP 55'09

EPD	BW	WW	YW	Milk	TM	ACC	BW	Adj. 205	Adj. 365
-0.4	40	77	22	42		70	811	1391	

This bull is the first calf from Black Cedar daughter from Black Creek Cattle co. Jeff recommended this female to us when she sold through the sale at Douglas Manitoba. She is a gorgeous female. Detonation 120D has the credentials for a calving ease sire. His birth weight numbers put him in the top 6% of the breed. This bull also has grown well. He gained 3.62lbs per day to 365 and is ranked #1 in his contemporary group for growth. You will admire the shape and style of this bull. Look to this bull to have all the calving ease, growth and maternal qualities you will want. This will be a bull you will want to retain heifers from. **Recommended for heifers.**

Lot 19



Northern View **Detonation** 127D

Lot 19 1901484 TTF 127D 05/02/2016 Male

Here is a moderate bull in all weights, performance and size. His mother is a good young cow that is working hard on a set of twins this year. Detonation 127D is a Thunder and has potential to be a calving ease bull I would use cautiously the first year to see how he calves out before using exclusively as a heifer bull.

EPD	BW	WW	YW	Milk	TM
2.7	40	76	19	39	

ACC	BW	Adj. 205	Adj. 365
85	847	1280	

BALDRIDGE KABOOM K243 KCF
CONNEALY THUNDER 1385922
PARKA OF CONANGA 241

BLAIRS NEW GENERATION 900Y
NORTHERN VIEW BELLE 117B 1804683
NORTHERN VIEW BELLE 102Y

JAUER 353 TRAVELER 589 27
PLEASANTA OF CONANGA 736
BON VIEW BANDO 598
PARTINA OF CONANGA 6237
DUFF NEW GENERATION (EE)
PRIME TIME'S GRACE 911'99
BELL NET RETURN 3U
WWF AMBUSH BELLE 166P



Alexis at Agribition

Northern View Slick 102D

Lot 20 1901469 FTA 102D 15/01/2016 Male

SITZ TRAVELER 8180
SAV FINAL ANSWER 0035 1061938
 SAV EMULOUS 8145

NORTHERN VIEW FLYING ELIXIR 70M
NORTHERN VIEW TIBBIE 83T 1377314
 CRESCENT CREEK BEAUTY 118E

G D A R TRAVELER 71
 SITZ EVERELDA ENTENSE 1137
 BON VIEW BANDO 598
 SAV SKY EMULOUS 2124
 ANKONIAN ELIXIR 100
 CRESCENT CREEK RUTH 6F
 BOTANY ANGUS MAX 5A
 CRESCENT CREEK BEAUTY 59Z

EPD	BW	WW	YW	Milk	TM	ACC	BW	Adj. 205	Adj. 365
1.1	55	92	18	46		85	921	1324	

Slick 102D is a descendant of our first Angus cow purchased 118E. We have a number of Beauty cows in our herd which act as a foundational cow family for us. Slick 102D is a deep sided and stylish bull out of one of the most used and prolific bulls in the Angus industry-Final Answer. A couple of years ago we were able to secure a bit of semen on him and used him on some specific cows and this past year on some yearling heifers. Final Answer cattle have proven to be functional with good growth and productivity at our place. The depth, shape and overall functionality are real draws to Slick 102D. A maternal brother sold to Randy Trost of Yorkton last year. A maternal brother from Schiefelbein Effective is at Bell Angus from the 2015 sale. This bull was admired for his depth, size and structure at the Heart of the South Angus tour this past summer. This is the 6th bull 83T has had in the Blue Collar. **This bull has the numbers that he should work on heifers.**

Lot 20



Northern View Smooth 116D

Lot 21 1948901 TTF 116D 02/02/2016 Male

SYDGEN DOC 9017
WK SMOOTH 2382 1766093
 THOENE IN FOCUS 763

HF SUPREMACY 257Y
JS TIBBIE 423B 1829629
 J SQUARE S TIBBIE 5Y

SYDGEN C C & 7
 SYDGEN MONTANA DREAM 2263
 MYTTY IN FOCUS
 THOENE NEW DESIGN 878-318
 CONNEALY CONSENSUS 7229
 HF ECHO 84R
 SITZ UPWARD 307R
 MVF TIBBIE 292U

EPD	BW	WW	YW	Milk	TM	ACC	BW	Adj. 205	Adj. 365
2.4	53	101	23	50		60	746	1187	

Smooth 116D was purchased in dam and selected by Talon from the 2015 Touch of Class Sale. This bull has pretty cool genetics top and bottom. He is a deep side, long and with a good top. Tibbie 423B is a very nice young cow and should be a foundation cow for Talon. This bull has a very low birth weight. He was born small and lively. Then he grew well. His weaning and yearling numbers put him in the top 15% and top 7% of the breed. This bull should work on heifers based on his birth weight but I would test him for a year to be sure.

Lot 21



Northern View Charlie 126D

Lot 22 1901490 FTA 126D 14/02/2016 Male

O C C PAXTON 730P
COLEMAN CHARLO 0256 1829703
 BOHI ABIGALE 6014

V D A R REALLY WINDY 4097
EASTONDALE GAMMER 48'14 1789191
 EASTONDALE GAMMER 74'12

O C C FOCUS 813F
 O C C BLACKBIRD 736K
 SITZ TRAVELER 8180
 SAV ABIGALE 6062
 AA R REALLY WINDY 1205
 VDAR BLACKBIRD 2031
 KA BLACK CEDAR 290
 EASTONDALE GAMMER 74'09

EPD	BW	WW	YW	Milk	TM	ACC	BW	Adj. 205	Adj. 365
1.6	38	76	17	36		80	758	1235	

If you are looking for a unique genetic package with calving ease then Charlie is your guy. This bull is pretty cool. He has all sorts of thickness and style, a great scrotal tool box and sound structure. I really like this bull. There are only 126 Charlo cattle registered in Canada. Charlo bulls have been very well received and selling for very high dollars in the US. His mother is a deep bodied and angular female with a good udder. What you would expect an Angus cow to look like. **Recommended for heifers.**

Lot 22



NORTHERN VIEW...



RB Tour of Duty 177

We were looking for an outcross power bull for ourselves and our customers. Tour of Duty was an easy fit. He has tonnes of style and very impressive growth numbers. Tour is classified as a curve bending bull.

Lot 23



Northern View Magnate 79D

Lot 23 1901449 FTA 79D 02/01/2016 Male

WERNER WAR PARTY 2417
R B TOUR OF DUTY 177 1829420
B A LADY 6807 305

WINDY WILLOWS ALLIANCE 36S
NORTHERN VIEW BEAUTY 94W 1503753
NORTHERN VIEW BEAUTY 78K

CONNEALY ONWARD
BAAR USA LADY JAYE 489
VERMILION DATELINE 7078
G D LADY HI FLYER 302
SITZ ALLIANCE 6595
WWF STOCKMAN EUTHALLA 127J
NEW FORCE LASER 3H
CRESCENT CREEK BEAUTY 118E

EPD	BW	WW	YW	Milk	TM	ACC	BW	Adj. 205	Adj. 365
3.5	63	95	24	56		95	920	1405	

Magnate 79D is a performance type bull. His mother, Beauty 94W, is a gorgeous cow that has produced well. She has produced well with 4 females in purebred herds, including ours. Magnate 79D is a big footed, sound structured bull with great length. He possess great cow families on the top and bottom of his pedigree. I would definitely look to keep females from this bull. This bull is very quiet and easy to manage.



Northern View Beauty 94W Dam of Lot 23

Lot 24



Northern View Magnate 110D

Lot 24 1901477 FTA 110D 21/01/2016 Male

This deep sided, powerful bull will grab your attention. He is smooth made with great feet and legs and very good scrotal development. The pedigree on this bull reads fantastic top and bottom. The power of Tour of Duty and the feminine strength of his dam make him a very strong herd sire candidate. He has impressive weaning and yearling weights and just continues to develop. His performance and maternal EPD's are all within the top 2% of the breed. The dam to this bull has a daughter working at Lock Farms in Macklin and a son sold to Russel Vollman at last year's Blue Collar.

EPD	BW	WW	YW	Milk	TM	ACC	BW	Adj. 205	Adj. 365
2.7	65	108	33	66		95	959	1473	

WERNER WAR PARTY 2417
R B TOUR OF DUTY 177 1829420
B A LADY 6807 305

CONNEALY THUNDER
NORTHERN VIEW PRINCESS 99Z 1675547
NORTHERN VIEW PRINCESS 95X

CONNEALY ONWARD
BAAR USA LADY JAYE 489
VERMILION DATELINE 7078
G D LADY HI FLYER 302
BALDRIDGE KABOOM K243 KCF
PARKA OF CONANGA 241
SKYE-VIEW BEEF MAKER 5T
NORTHERN VIEW PRINCESS 74S

NORTHERN VIEW...

Northern View **Magnate 5D**

Lot 25 1901422 URZ 5D 16/01/2016 Male

WERNER WAR PARTY 2417
R B TOUR OF DUTY 177 1829420
B A LADY 6807 305

NORTHERN VIEW QUANTUM 86P
NORTHERN VIEW QUEEN 9W 1514997
SKYE-VIEW QUEEN 4M

CONNELLY ONWARD
BAAR USA LADY JAYE 489
VERMILION DATELINE 7078
G D LADY HI FLYER 302
GDAR QUANTUM 963
CRESCENT CREEK BLACKBIRD 21J
HILOW RIGHT TIME 1J
BAR KAY CEE ERICA 36B

EPD	BW	WW	YW	Milk	TM	ACC	BW	Adj. 205	Adj. 365
1.6	46	91	23	46		90	879	1136	

Magnate 5D is a moderate in many characteristics including his calving numbers. He comes from a very nice Quantum 86P daughter. These 86P daughters have been real gems for us. A maternal sister sold to Triple H Angus from Cupar in last year's Blue Collar Sale.

Lot 25



Northern View **RIP 17D**

Lot 26 1928471 URZ 17D 06/03/2016 Male

MJLC BOOMER 19Y
WINDY WILLOWS BOOMER 98B 1814841
NORTHERN VIEW JESTRESS 9Y

SKYEBROOK FLY TRAVELER 8X
SKYEBROOK PRIDE DOLLY 13B 1777551
ROYAL PRIDE DOLLY 75T

GEIS BALOO 13'08
MJLC CATHERINE 70M
NORTHERN VIEW QUANTUM 86P
NORTHERN VIEW JESTRESS 35U
WHITESTONE FLY TRAVELER 3006
SKYE-VIEW ANGEL 4N
ROYAL NEW LEVEL 30R
ROYAL PRIDE DOLLY 38N

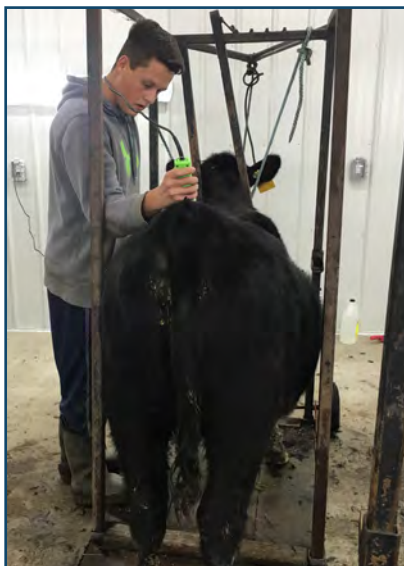
EPD	BW	WW	YW	Milk	TM	ACC	BW	Adj. 205	Adj. 365
4.1	36	68	26	44		92	951	1244	

This bull is from a first calf heifer that Dad selected from Misselbrook's out of the Blue Collar two years ago. She is turning into a real nice young cow. Boomer 98B is a calving ease specialist that we have used for two years on heifers. This bull has great shape and structure to him.

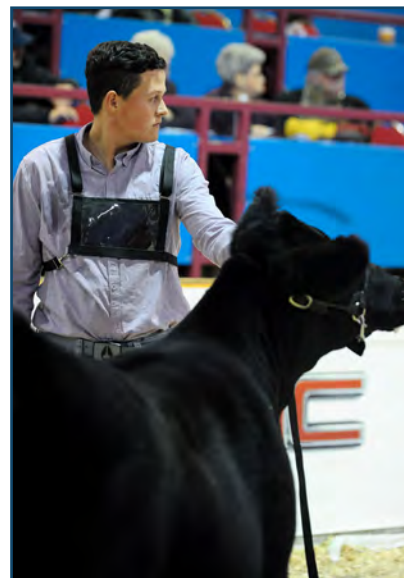
Lot 26



Talon Clipping

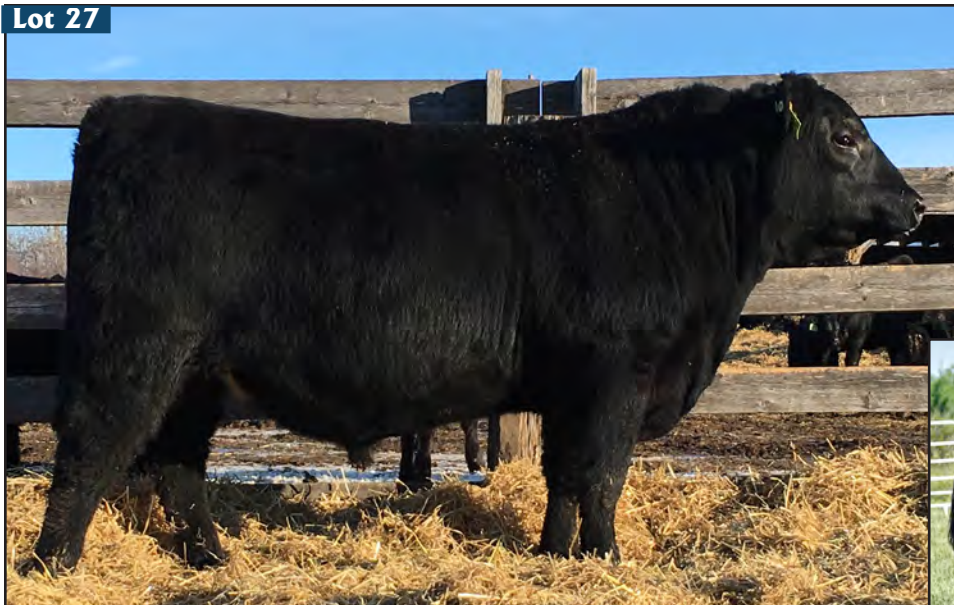


Talon at Agribition



PARKWOOD...

Lot 27



Mohnen **South Dakota** 402



Parkwood **South Dakota** 12D

Lot 27 1918579 WHBS 12D 03/01/2016 Male

MOHNEN DENSITY 730
MOHNEN SOUTH DAKOTA 402 1727672
 MOHNEN JILT 539
 S A V LEWIS 8373
PARKWOOD MISS HAPPY 34X 1561809
 OTA MISS HAPPY 75N
 S A V 004 DENSITY 4336 (EE)
 MOHNEN JILT 910
 TC ABERDEEN 759
 MOHNEN JILT 787
 S A V 8180 TRAVELER 004
 S A V BESSIE HEIRESS 1184
 V A F HAPPY OSCAR 57
 VALLEY RIDGE ELBA 4Y

EPD	BW	WW	YW	Milk	TM	ACC	BW	WW	Adj. WW	Adj. YW
	3.1	55	86	21	49		91	910	734	1445

We are very pleased to be leading off our offering of bulls with this South Dakota son. 12D has great feet, exceptional depth and muscle. If you are looking for performance and pounds this guy had a 365 day weight of 1445 with an average daily gain of 4.44 pounds. 12D's dam is a deep bodied feminine cow with a perfect udder. Maternal brothers have sold in the past to Westview Farms and Bryan Stadnyk.

Lot 28



Parkwood **South Dakota** 21D

Lot 28 1948359 BJA 21D 04/01/2016 Male

MOHNEN DENSITY 730
MOHNEN SOUTH DAKOTA 402 1727672
 MOHNEN JILT 539
 MVF VRD DATELINE 5M
PARKWOOD ROSEBUD 65X 1561827
 CRESCENT CREEK ROSEBUD 136S
 S A V 004 DENSITY 4336 (EE)
 MOHNEN JILT 910
 TC ABERDEEN 759
 MOHNEN JILT 787
 VERMILION DATELINE 7078
 MVF LADY ANNE 30F
 KBJ HOOSIER 25P
 CRESCENT CREEK BARANDA 184N

EPD	BW	WW	YW	Milk	TM	ACC	BW	WW	Adj. WW	Adj. YW
4.0	57	95	18	47			92	880	713	1219

Here's a moderately framed South Dakota son with length, muscle and structural correctness. We feel he will pass on his ability to his progeny to push the scales down.

Lot 29



Parkwood **South Dakota** 17D

Lot 29 1918578 WHBS 17D 03/01/2016 Male

MOHNEN DENSITY 730
MOHNEN SOUTH DAKOTA 402 1727672
 MOHNEN JILT 539
 IDEAL 4355 OF 0T26 2440
PARKWOOD EPPONIA 14Y 1641300
 EPPONIA OF PARKWOOD 29M
 S A V 004 DENSITY 4336 (EE)
 MOHNEN JILT 910
 TC ABERDEEN 759
 MOHNEN JILT 787
 S S OBJECTIVE T510 OT26
 IDEAL 2440 OF 7407 7275
 CRESCENT CREEK LEGEND 148G
 EPPONIA OF PARKWOOD 1G

EPD	BW	WW	YW	Milk	TM	ACC	BW	WW	Adj. WW	Adj. YW
3.8	56	92	25	53			93	900	727	1376

Another South Dakota son that fits the mould of having thickness, muscle and style. His Rito dam has been designated elite this year with two daughters being retained in our herd and a son sold to Rod Wegner at our 2015 sale.

Lot 30



Parkwood Ambush 57D

Lot 30 1946753 WHBA 57D 13/01/2016 Male

TJF 20X AMBUSH 14Z
HBH BEACON 489B 1784566
KEMBAR ELINE 48Y

S A V 004 DENSITY 4336
PARKWOOD WILLA QUEEN 204W 1505947
WILLA QUEEN OF PARKWOOD 42M

TJF AMBUSH 20X
TJF MS FREEDOM 35U
SOO LINE KODIAK 8158
KEMBAR ELINE 112U
S A V 8180 TRAVELER 004
S A V MAY 7238
WINDY WILLOWS STOCKADE 91G
WILLA QUEEN OF PARKWOOD 6G

EPD	BW	WW	YW	Milk	TM	ACC	BW	WW	Adj. WW	Adj. YW
2.7	44	74	23	45		92	910	760	1375	

We are very pleased to offer the first set of sons from our HBH Beacon bull that we purchased at the 20th Cattleman's Connection sale. 57D has loads of thickness, muscle and style who will inject gain ability to his progeny. His dam has been one of our top producing females in our herd. This Density cow is an elite dam with 6 calves ratioing 107. We have sold maternal brothers to Owen Salisbury and a maternal sister to Circle Bar Ranch.

Lot 31



Parkwood Ambush 79D

Lot 31 1946752 WHBA 79D 22/01/2016 Male

TJF 20X AMBUSH 14Z
HBH BEACON 489B 1784566
KEMBAR ELINE 48Y

IDEAL 4355 OF OT26 2440
PARKWOOD QUEEN RUTH 211W 1505948
PARKWOOD QUEEN RUTH 153S

TJF AMBUSH 20X
TJF MS FREEDOM 35U
SOO LINE KODIAK 8158
KEMBAR ELINE 112U
S S OBJECTIVE T510 OT26
IDEAL 2440 OF 7407 7275
BROOKMORE BANDO 5175 145P
CRESCENT CREEK QUEEN RUTH 153H

EPD	BW	WW	YW	Milk	TM	ACC	BW	WW	Adj. WW	Adj. YW
2.5	53	88	24	51		91	900	776	1399	

This is a performance bull with volume and rib shape to sire easy fleshing daughters and steers that weigh heavy. His Rito Revolution dam has a perfect udder and has passed on her docility to her son.

Lot 32



Parkwood Ambush 74D

Lot 32 1946741 BJA 74D 19/01/2016 Male

TJF 20X AMBUSH 14Z
HBH BEACON 489B 1784566
KEMBAR ELINE 48Y

S A V LEWIS 8373
PARKWOOD TIBBIE 28Y 1621325
PARKWOOD TIBBIE 053R

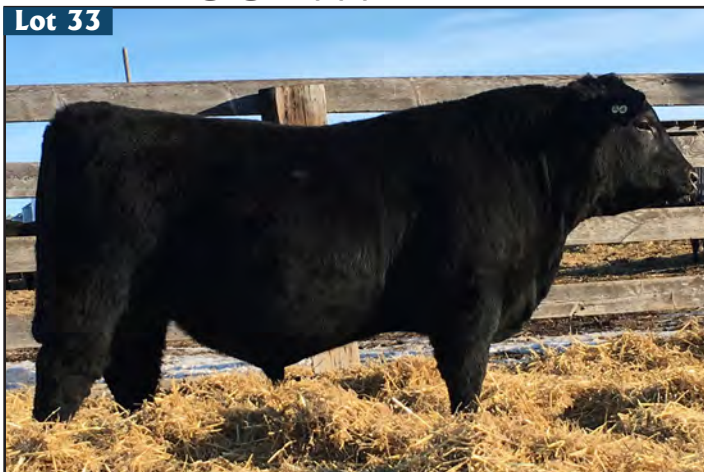
TJF AMBUSH 20X
TJF MS FREEDOM 35U
SOO LINE KODIAK 8158
KEMBAR ELINE 112U
S A V 8180 TRAVELER 004
S A V BESSIE HEIRESS 1184
BOYD NEW DAY 8005
MVRB TIBBIE 81F

EPD	BW	WW	YW	Milk	TM	ACC	BW	WW	Adj. WW	Adj. YW
2.9	47	82	24	48		89	810	692	1321	

74D is a long, deep sided, smooth bull who will have the ability to combine growth and maternal traits. His Lewis dam is a heavy milking feminine cow that has been a consistent producer.

PARKWOOD...

Lot 33



Parkwood **Ambush** 105D

Lot 33 1946747 WHBA 105D 01/02/2016 Male

TJF 20X AMBUSH 14Z
HBH BEACON 489B 1784566
 KEMBAR ELINE 48Y

CRESCENT CREEK SUPER X 91S
PARKWOOD QUEEN RUTH 32X 1562045
 PARKWOOD QUEEN RUTH 167U

TJF AMBUSH 20X
 TJF MS FREEDOM 35U
 SOO LINE KODIAK 8158
 KEMBAR ELINE 112U
 DWAJO SUPER X 104N
 CRESCENT CREEK ROSEBUD 97P
 S A V FINAL ANSWER 0035
 PARKWOOD QUEEN RUTH 153S

EPD	BW	WW	YW	Milk	TM	ACC	BW	WW	Adj. WW	Adj. YW
3.9	52	86	20	46			94	850	762	1330

This is a powerful Ambush son loaded with meat and muscle from front to back. His Super X dam has as much depth, mass and fleshing ability as any cow on the farm.

Lot 34



Parkwood **International** 61D

Lot 34 1946420 WHBA 61D 15/01/2016 Male

S A V HARVESTOR 0338
S A V INTERNATIONAL 2020 1724665
 S A V EMBLYNETTE 5483

SITZ UPWARD 307R
MVF TIBBIE 25X 1550285
 MVF TIBBIE 22P

S A V HERITAGE 6295
 S A V EMBLYNETTE 7749
 S A V 8180 TRAVELER 004
 S A V EMBLYNETTE 7260
 CONNEALY ONWARD
 SITZ HENRIETTA PRIDE 81M
 VERMILION DATELINE 7078
 MVF TIBBIE 28C

EPD	BW	WW	YW	Milk	TM	ACC	BW	WW	Adj. WW	Adj. YW
3.6	58	104	23	51			91	970	815	1403

This calf is a result of purchasing embryos from Swan Hills Ranch. Too bad we didn't have ten more like him! He represents all the qualities of an ideal beef bull. He's thick, heavy muscled, has a superior structure and has been a favourite of anyone who has toured the pen. He has a full sister that we will be retaining in our herd.

S A V **International**



Parkwood Cedar Ridge 8D

Lot 35 19118574 WHBS 8D 02/01/2016 Male

COLE CREEK BLACK CEDAR 46P
COLE CREEK CEDAR RIDGE 1V 1659099
COLE CREEK CLOVANADA 49S

HF KODIAK 123Y
PARKWOOD LADY ANN 80B 1792401
PARKWOOD LADY ANN 42N

C H QUANTUM 6247
COLE CREEK CLOVA JUANADA 67
HBR ENCORE 0544
COLE CREEK CLOVANADA 709
HF KODIAK 5R
2HR TIBBIE 30R
CRESCENT CREEK LEGEND 148G
EARLY SUNSET LADY ANN 19Y

EPD	BW	WW	YW	Milk	TM	ACC	BW	WW	Adj. WW	Adj. YW
1.8	42	69	25	46		86	790	711	1272	

8D is another typical Cedar Ridge son with excellent foot structure, adequate muscle, exceptional docility and fleshing ability. Recommended for heifers.



Cole Creek **Cedar Ridge 1V**



Koupal **Advance 28X**

Parkwood Advance 44D

Lot 36 1918544 WHBA 44D 08/01/2016 Male

KOUPAL JUNEAU 797
KOUPAL ADVANCE 28 1766543
KOUPAL EBONETTE 734

SITZ UPWARD 307R
PARKWOOD HEATHER 28B 1792416
PARKWOOD HEATHER 130U

O C C JUNEAU 807J
KOUPALS ELBA 187
S A V INITIATIVE 4406
KOUPALS EBONETTE 545
CONNEALY ONWARD
SITZ HENRIETTA PRIDE 81M
MV F VRD DATELINE 5M
HEATHER OF PARKWOOD 13L

EPD	BW	WW	YW	Milk	TM	ACC	BW	WW	Adj. WW	Adj. YW
2.7	61	107	26	57		88	820	820	1398	

44D is a calving ease bull with extra growth and performance. With a 205 index of 102 and a 365 index of 113, he is sure to sire the kind of feeder cattle the industry wants. These are pretty impressive numbers for a first calf heifer and we are excited for her future.



Parkwood Advance 25D

Lot 37 1916770 BJA 25D 03/01/2016 Male

KOUPAL JUNEAU 797
KOUPAL ADVANCE 28 1766543
KOUPAL EBONETTE 734

S A V PIONEER 730I
PARKWOOD TIBBIE 7B 1825752
MV F TIBBIE 813P

O C C JUNEAU 807J
KOUPALS ELBA 187
S A V INITIATIVE 4406
KOUPALS EBONETTE 545
S A V FINAL ANSWER 0035
S A V BLACKBIRD 5297
GDAR SV F TRAVELER 234D
MV F TIBBIE 52F

EPD	BW	WW	YW	Milk	TM	ACC	BW	WW	Adj. WW	Adj. YW
2.3	58	99	28	57		88	830	745	1251	

25D combines calving ease with performance. This thick topped beef bull earned a 205 weaning ratio of 109. His grand dam is none other than the MV F Tibbie 813P.



PARKWOOD...

Lot 38



Parkwood **Tiger** 50D

Lot 38 1918545 WHBA 50D 11/01/2016 Male

HF TIGER 5T
PARKWOOD TIGER 5A 1764922
MV F ELLEN 634T

BAR D K ANSWER 20'11
PARKWOOD HEATHER QUEEN 57B 1801966
PARKWOOD HEATHER QUEEN 10P

HF KODIAK 5R
HF ECHO 84R
CONNEALY FREIGHTLINER
MV F ELLEN 26N
S A V FINAL ANSWER 0035
BAR D K BARANDA 22'09
CRESCENT CREEK LEGEND 148G
HEATHER QUEEN OF PARKWOOD 10H

EPD	BW	WW	YW	Milk	TM	ACC	BW	WW	Adj. WW	Adj. YW
4.1	40	75	21	41			84	740	690	1291

Tiger bulls are known for their correct structure, appealing muscle shape and proud character as well as early gestation and calving ease. After three calf crops, we are very confident with 5A's calving ease ability without sacrificing growth and performance. His modest sized two year old Final Answer dam exemplifies the traits that have made her sire so popular.

Lot 39



Parkwood **Payout** 109D

Lot 39 1926002 BJA 109D 01/02/2016 Male

RING CREEK BIG PAYOUT 41Z
MV F PAYOUT 30B 1811668
MV F HI LITE 456W

COLE CREEK CEDAR RIDGE 1V
PARKWOOD TIBBIE 7A 1735902
PARKWOOD TIBBIE 28Y

CONNEALY CONSENSUS 7229
LADY OF RING CREEK 10W
NORSEMAN FRONTIER 2'07
MV F HI LITE 20P
COLE CREEK BLACK CEDAR 46P
COLE CREEK CLOVANADA 49S
S A V LEWIS 8373
PARKWOOD TIBBIE 053R

EPD	BW	WW	YW	Milk	TM	ACC	BW	WW	Adj. WW	Adj. YW
2.2	57	95	29	58			93	860	809	1417

We selected Payout for his ability to sire calves with lower birthweight and explosive growth numbers, and 109D fits the mould. With a 205 weight of 809 and a 365 day weight of 1417, this will appeal to cowmen that want cattle that perform. It's nice to see these Cedar Ridge daughters performing well in our herd.

Lot 40



Parkwood **Double Vision** 29D

Lot 40 1918538 WHBA 29D 04/01/2016 Male

CONNEALY REFLECTION
JINDRA DOUBLE VISION 1764385
HOFF RACHEL 8312 405

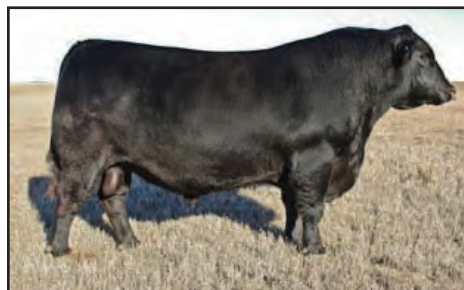
S A V LEWIS 8373
PARKWOOD HEATHER JOY 125X 1562073
HEATHER JOY OF PARKWOOD 17H

BON VIEW NEW DESIGN 878
HAPPY GRILL OF CONANGA 6260
HOFF LIMITED EDITION SC 594
HOFF MISS EXPO S C 4223
S A V 8180 TRAVELER 004
S A V BESSIE HEIRESS 1184
G T MAXIMUM
HEATHER JOY OF PARKWOOD 77D

EPD	BW	WW	YW	Milk	TM	ACC	BW	WW	Adj. WW	Adj. YW
1.5	56	100	21	49			89	900	728	1358

Double Vision is an ideal fit for use on smaller framed cows that need more growth and pounds while maintaining a moderate birthweight. He sires high performance, heavy weaning progeny that has him in the top 3% of the breed for weaning and top 1% for yearling weight.

Jindra **Double Vision**



PARKWOOD FARM

Blue Collar Bull Sale, Yorkton, SK

Parkwood **Cashflow** 37D

Lot 41 1916776 BJA 37D 06/01/2016 Male

BARSTOW CASH
KR CASH FLOW 1788448
WK LASS 1591

BOYD NEW DAY 8005
PARKWOOD TIBBIE 053R 1305803
MVRB TIBBIE 81F

SITZ DASH 10277
BARSTOW QUEEN W16
WK RETURN
VERMILION LASS 0029
A A R NEW TREND
S V F FOREVER LADY 57D
V D A R NEW TREND 933
MVF TIBBIE 48W

EPD	BW	WW	YW	Milk	TM	ACC	BW	WW	Adj. WW	Adj. YW
3.4	56	99	20	48			89	920	776	1344

We used Cash flow trying to get as much yearling weight as possible without sacrificing moderate birthweights. Cash flow was the high selling Barstow Cash son in spring 2014. 37D is an all-around solid type made bull with incredible growth, stretch and overall eye appeal. His Boyd New Day dam has been a seedstock factory with four daughters being retained and one daughter and son sold at previous blue collar bull sales.

Lot 41



Parkwood **Unanimous** 45D

Lot 42 1946739 BJA 45D 09/01/2016 Male

VISION UNANIMOUS 1418
HBH BAKARI 418B 1784508
HBH BANDOLIER LASS 18R

HF TIGER 5T
PARKWOOD ELLEN 8A 1764919
MVF ELLEN 634T

VISIONTOPLINE ROYAL STOCKMAN
VISION EDELLA 665
TC FOREMAN 016 (RC)
KEMBAR BANDOLIER LASS 23N
HF KODIAK 5R
HF ECHO 84R
CONNEALY FREIGHTLINER
MVF ELLEN 26N

EPD	BW	WW	YW	Milk	TM	ACC	BW	WW	Adj. WW	Adj. YW
1.8	47	90	20	44			88	815	710	1442

Vision Unanimous 1418 has phenomenal performance with a weaning weight of 902 and a yearling weight of 1611 all while maintaining outstanding feet and legs. HBH Bakari was our top choice from HBH Airey Cattle Co. and his first set of calves have exceeded our expectations. 45D is an easy fleshing bull with massive capacity, depth and volume. 8A is a feminine, nice uddered dam by HF Tiger 5T who displays the ideal body type of a perfect cow.

Lot 42



Parkwood **Resource** 39D

Lot 43 1918541 WHBA 39D 06/01/2016 Male

RITO 707 OF IDEAL 3407 7075
SAV RESOURCE 1441 1707295
SA V BLACKCAP MAY 4136

REMINGTON COPENHAGEN 137R
PARKWOOD HEATHER JOY 59W 1505981
HEATHER JOY OF PARKWOOD 7M

R R RITO 707
IDEAL 3407 OF 1418 076
SA V 8180 TRAVELER 004
SA V MAY 2397
SCA 3299 OF IDEAL 1418
ISLA BANK PRIDE 40M
SAF SIDEKICK 36J
HEATHER JOY OF PARKWOOD 7J

EPD	BW	WW	YW	Milk	TM	ACC	BW	WW	Adj. WW	Adj. YW
3.1	59	106	24	54			91	990	805	1168

Resource is the most popular bull in the Genex lineup ranking in the top 1% for weaning weight and 1% for yearling weight. 39D is a well-muscled bull with thickness and style that resembles his sire. 59W is an elite dam with one daughter being retained in the herd and a son sold at a previous sale to Irvin Madsen.

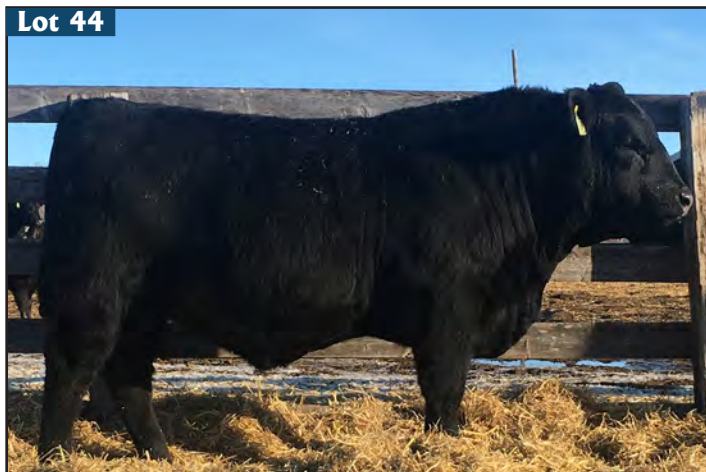
Lot 43



SAV **Resource** 1141

PARKWOOD...

Lot 44



Parkwood Kodiak 95D

Lot 44 1918559 WHBA 95D 27/01/2016 Male

HF KODIAK 5R
HF KODIAK 123Y 1627488
2HR TIBBIE 30R

HARB PENDLETON 765 J H
PARKWOOD HEATHER QUEEN 15Z 1707339
PARKWOOD HEATHER QUEEN 32P

SANDY BAR ADVANTAGE 43M
WILBAR RUBY 955N
S A F FOCUS OF E R
HF TIBBIE 66L
S A V FINAL ANSWER 0035
H A R B BLACK LADY 375 J H
ALBERDA TRAVELER 416
HEATHER QUEEN OF PARKWOOD 2J

EPD	BW	WW	YW	Milk	TM	ACC	BW	WW	Adj. WW	Adj. YW
1.4	64	96	25	57		89	1010	902	1476	

This will be our last set of calves from HF Kodiak 123Y and we can't say enough good things about what he's done. This is a definite power bull who is deep bodied with loads of performance with a 205 weight of 902 and a 365 day weight of 1476. His grand dam is elite with 7 bulls being sold at previous sales and five daughters being retained in the herd.

Lot 45



Parkwood Kodiak 63D

Lot 45 1916779 BJA 63D 14/01/2016 Male

HF KODIAK 5R
HF KODIAK 123Y 1627488
2HR TIBBIE 30R

CRESCENT CREEK TOMBOY 15W
CRESCENT CREEK LADY BATE 41Z 1665247
CRESCENT CREEK LADY BATE 117T

SANDY BAR ADVANTAGE 43M
WILBAR RUBY 955N
S A F FOCUS OF E R
HF TIBBIE 66L
LOOKOUT HUCK 53T
CRESCENT CREEK ROSEBUD 6R
CAR IDEAL 061
CRESCENT CREEK LADY BATE 50F

EPD	BW	WW	YW	Milk	TM	ACC	BW	WW	Adj. WW	Adj. YW
3.0	43	74	20	42		88	830	655	1455	

63D is a typical Kodiak son that combines powerful performance with a moderate birthweight. His dam is easy fleshing, heavy milking with natural thickness and volume.

Lot 46



Parkwood Kodiak 38D

Lot 46 1918586 WHBS 38D 06/01/2016 Male

HF KODIAK 5R
HF KODIAK 123Y 1627488
2HR TIBBIE 30R

REMINGTON COPENHAGEN 137R
PARKWOOD EPPONIA 72Y 1621445
PARKWOOD EPPONIA 12R

SANDY BAR ADVANTAGE 43M
WILBAR RUBY 955N
S A F FOCUS OF E R
HF TIBBIE 66L
SCA 3299 OF IDEAL 1418
ISLA BANK PRIDE 40M
MV F VRD DATELINE 5M
EPPONIA OF PARKWOOD 2K

EPD	BW	WW	YW	Milk	TM	ACC	BW	WW	Adj. WW	Adj. YW
1.3	44	72	22	44		87	840	685	1308	

38D is a moderate framed Kodiak bull with loads of thickness, muscle and fleshing ability with a modest birthweight. This mating of Kodiak and Copenhagen has worked well with a full brother being sold to Bob and Joyce Yaworsky, as well as a maternal brother being sold to Clint and Meridee Kopelchuk. 72Y has also been designated elite this year with a ratio of 111 on four calves.

Lot 47



R B Tour of Duty 177



Parkwood Tour Of Duty 14D

Lot 47 1918581 WHBS 14D 03/01/2016 Male

WERNER WAR PARTY 2417
R B TOUR OF DUTY 177 1829420
 B A LADY 6807 305
 S A NEUTRON 377
PARKWOOD LAWN 82S 1359344
 CRESCENT CREEK LAWN 82K

CONNEALY ONWARD
 BAAR USA LADY JAYE 489
 VERMILION DATELINE 7078
 G D LADY HI FLYER 302
 S A F NEUTRON
 S A QUEEN SUSAN 102
 MVF SIRLOIN 18H
 CRESCENT CREEK LAWN 109H

EPD	BW	WW	YW	Milk	TM	ACC	BW	WW	Adj. WW	Adj. YW
2.9	63	111	25	57		92	990	797	1481	

14D is a high octane herdsire prospect that will add length and growth to your calf crop. He came off his dam at 990 pounds and has continued on to a 1490 yearling weight. His 300S Neutron dam has been designated elite since 2012 and has produced sons selling to Irvin Gulash, Jon & Gloria Krause and Thomas Simpson.

Lot 48



Parkwood Tour Of Duty 3D

Lot 48 1918575 WHBS 3D 02/01/2016 Male

WERNER WAR PARTY 2417
R B TOUR OF DUTY 177 1829420
 B A LADY 6807 305
 HF KODIAK 123Y
PARKWOOD LAWN 42A 1735883
 PARKWOOD LAWN 82S

CONNEALY ONWARD
 BAAR USA LADY JAYE 489
 VERMILION DATELINE 7078
 G D LADY HI FLYER 302
 HF KODIAK 5R
 2HR TIBBIE 30R
 S A NEUTRON 377
 CRESCENT CREEK LAWN 82K

EPD	BW	WW	YW	Milk	TM	ACC	BW	WW	Adj. WW	Adj. YW
2.8	58	103	28	57		88	910	769	1350	

Following in the footsteps of her elite dam, 42A has also produced a meaty, thick, easy fleshing Tour Of Duty Bull. With a moderate 88 pound birth weight and a weaning weight of 910 he will sire calves that are highly sought after.

Lot 49



Parkwood Tour Of Duty 20D

Lot 49 1934529 WHBA 20D 04/01/2016 Male

WERNER WAR PARTY 2417
R B TOUR OF DUTY 177 1829420
 B A LADY 6807 305
 JL YOUNG PRO 9003
PARKWOOD ALICIA 140A 1735881
 PARKWOOD ALICIA 60S

CONNEALY ONWARD
 BAAR USA LADY JAYE 489
 VERMILION DATELINE 7078
 G D LADY HI FLYER 302
 S A V YOUNG JOCK 6457
 JL LADY 07043
 S A NEUTRON 377
 ALICIA OF PARKWOOD 20L

EPD	BW	WW	YW	Milk	TM	ACC	BW	WW	Adj. WW	Adj. YW
3.3	49	94	24	49		89	755	652	1445	

This Tour Of Duty bull displays length of spine, and incredible depth and width. 140A supplies the extra stoutness, bone and the overall body mass that we like to see in our females.

PARKWOOD FEMALES...

Lot 50



Parkwood **Epponia** 16D

Lot 50 1918582 WHBS 16D 03/01/2016 Female

CONNEALY REFLECTION
JINDRA DOUBLE VISION 1764385
 HOFF RACHEL 8312 405
 WINDY WILLOWS STOCKADE 91G
PARKWOOD EPONIA 1091038
 EPONIA OF PARKWOOD 1G

BON VIEW NEW DESIGN 878
 HAPPY GRILL OF CONANGA 6260
 HOFF LIMITED EDITION SC 594
 HOFF MISS EXPO S C 4223
 WIWA CREEK STOCKMAN 26'95
 WINDY WILLOWS JENNIFER 96B
 PERRYVILLE PEARSON 17D
 2J EPONIA 13A

EPD	BW	WW	YW	Milk	TM	ACC	BW	Adj. WW	Adj. YW
2.4	45	80	21	44		90	626	865	

7K is a testament of longevity as she turned 17 years of age this year and has yet another calf on the ground this winter. Her Double Vision heifer we have on offer has loads of femininity, muscle and award winning style.

Lot 51



Parkwood **Alicia** 28D

Lot 51 1918539 WHBA 28D 04/01/2016 Female

RITO 707 OF IDEAL 3407 7075
SAV RESOURCE 1441 1707295
 S A V BLACKCAP MAY 4136
 MVF VRD DATELINE 5M
PARKWOOD ALICIA 20U 1445265
 ALICIA OF PARKWOOD 20L
 R R RITO 707
 IDEAL 3407 OF 1418 076
 S A V 8180 TRAVELER 004
 S A V MAY 2397
 VERMILION DATELINE 7078
 MVF LADY ANNE 30F
 CRESCENT CREEK LEGEND 148G
 ALICIA OF PARKWOOD 20D

EPD	BW	WW	YW	Milk	TM	ACC	BW	Adj. WW	Adj. YW
3.6	57	106	18	47		88	584	793	

This Resource female's sire is best known for his broody, easy keeping, highly productive daughters with excellent dispositions and tremendous udders. 28D is a very eye appealing female.

PARKWOOD FEMALES...

Lot 52



Parkwood **Epponia** 19D

Lot 52 1918576 WHBS 19D 03/01/2016 Female

HF KODIAK 5R
HF KODIAK 123Y 1627488
2HR TIBBIE 30R

CRESCENT CREEK SUPER X 91S
PARKWOOD EPponia 71Z 1681009
EPponia OF PARKWOOD

SANDY BAR ADVANTAGE 43M
WILBAR RUBY 955N
SA F FOCUS OF E R
HF TIBBIE 66L
DWAJO SUPER X 104N
CRESCENT CREEK ROSEBUD 97P
WINDY WILLOWS STOCKADE 91G
EPponia OF PARKWOOD 1G

EPD	BW	WW	YW	Milk	TM	ACC	BW	WW	Adj. YW
2.9	48	73	14	38			86	710	827

19D is a moderate framed, easy fleshing heifer with lots of thickness and muscle. These Kodiak sired daughters have done an outstanding job in our herd.

Parkwood **Queen** 120D

Lot 53 1925990 WHBA 28D 10/02/2016 Female

RING CREEK BIG PAYOUT 41Z
MVF PAYOUT 30B 1811668
MVF HI LITE 456W

CRESCENT CREEK SUPER X 91S
PARKWOOD QUEEN 48Z 1681034
PARKWOOD DALE 64W

CONNELLY CONSENSUS 7229
LADY OF RING CREEK 10W
NORSEMAN FRONTIER 2'07
MVF HI LITE 20P
DWAJO SUPER X 104N
CRESCENT CREEK ROSEBUD 97P
REMINGTON COPENHAGEN 137R
PARKWOOD DALE 73N

EPD	BW	WW	YW	Milk	TM	ACC	BW	Adj. WW	Adj. YW
2.2	58	92	22	51			89	657	948

This powerful heifer is long, thick and massive whose dam is feminine with a perfect udder.

Lot 53



SWAN HILLS...

FULL FLUSH BROTHERS

We are retaining a 1/3 semen interest in all our bulls unless otherwise stated. This does not impact you owning the bull, the rights to walk the bull or the salvage value on the bull. All it means that if at some point we would like to draw semen for in herd use we would arrange at your convenience and our expense to do so.

Lot 54



R B Active Duty 0010X



SHR Active Duty 63D

Lot 54 1947252 SHRX 63D 03/03/2016 Male

EPD	BW	WW	YW	Milk	TM	ACC	BW	Adj. WW	Feb 21 WW
1.2	54	101	26	52		87	831	1295	

LCC NEW STANDARD
R B ACTIVE DUTY 0010X 1776360
B A LADY 6807 305

S A V 004 PREDOMINANT 4438
ERICA OF PEAK DOT 478U 1461560
ERICA OF PEAK DOT 326R

BON VIEW NEW DESIGN 1407
LCC SUNSET K3118
VERMILION DATELINE 7078
G D LADY HI FLYER 302
S A V 8180 TRAVELER 004
S A V EMBLYNETTE 1182
PEAK DOT HOBSON 57N
ERICA OF PEAK DOT 471N

Pedigree for 63D and 40D

Here's a pair of bulls offering soggy, thick, and mid size frame score. 63D was part of our show string this past fall at Agribition 2016. Look for Active Duty for loads of performance and a stacked up pedigree that has been proven thru the Angus industry. In cooperation with Semex, the dam, Erika Of The Peak 478U offers all the maternal qualities we look for in a donor cow.

SHR Active Duty 40D

Lot 55 1948151 SHRX 40D 29/01/206 Male

EPD	BW	WW	YW	Milk	TM
1.2	54	101	26	52	

ACC	BW	Adj. WW	Feb 21 WW
84	636	1175	

Lot 55



Agribition 2016

SWAN HILLS RANCH

Blue Collar Bull Sale, Yorkton, SK

Lot 56



SHR Pulse 53D

Lot 56 1948642 SHRX 53D 02/02/2016 Male

MOHNEN HEARTRATE 1751
MOHNEN PULSE 533 1806334
 MOHNEN JILT 2360
 S A V REVERE 1180
SHR ECHO 129B 1948153
 BH ECHO 1Y
 S A V HEARTBEAT 9222
 MOHNEN JILT 787
 H A R B WINDY 702 J H
 MOHNEN JILT 2477
 S A V 707 RITO 9969
 A C DUKE GIRL 57
 HF TIGER 5T
 HF JUNE 55W

53D with his Dam



EPD	BW	WW	YW	Milk	TM	ACC	BW	Adj. WW	Adj. YW
-1.3	50	92	28	53	8	846	1307		

Pulse has been our pick for the calving-ease sire to use on heifers. The progeny have proven themselves at Swan Hills Ranch for low birthweight and performance indexing against other performance sires. Pulse boasts a -3.9 BW and 15 CE EPD, ranking him respectively in the top 2% and 4% in North America. Our 2017 Pulse calves continue to impress us.

Mohnen **Pulse** 533



SHR Pulse 41D

Lot 57 1947357 SHRX 41D 27/01/2016 Male

MOHNEN HEARTRATE 1751
MOHNEN PULSE 533 1806334
 MOHNEN JILT 2360
 SHR CAMARO 20Z
SHR MAYFLOWER 5B 1944746
 MVF MAYFLOWER 25Z
 S A V HEARTBEAT 9222
 MOHNEN JILT 787
 H A R B WINDY 702 J H
 MOHNEN JILT 2477
 S A V CAMARO 9272
 MVF TIBBIE 22P
 S A V PIONEER 7301
 MVF MAYFLOWER 291X

EPD	BW	WW	YW	Milk	TM	ACC	BW	WW	Jan 30 WW
-0.1	50	86	24	48	83	748	1100		

Pulse calves continue to impress us for calving ease and performance, and is our choice AI sire for our heifers. Part of our show string heifers were Pulse calves, female angularity, correct teat placement, and a sharp pear-shaped look that has brood cow written all over them!!

Lot 57



SWAN HILLS...

Lot 58



SHR Double Vision 45D

Lot 58 1944583 SHRX 45D 14/01/2016 Male

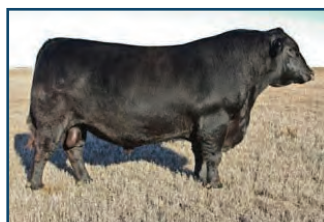
CONNEALY REFLECTION
JINDRA DOUBLE VISION 1764385
HOFF RACHEL 8312 405

B P F SPECIAL FOCUS 504
BROOKMORE DAISY 11B 1800764
BROOKMORE DAISY 185Z

BON VIEW NEW DESIGN 878
HAPPY GRILL OF CONANGA 6260
HOFF LIMITED EDITION SC 594
HOFF MISS EXPO S C 4223
MYTTY IN FOCUS
B P F BLACK CASH 341
S A V PIONEER 7301
BROOKMORE DAISY 246U

EPD	BW	WW	YW	Milk	TM	ACC	BW	Adj. WW	YW
1.9	53	100	28	55			81	707	1180

Jindra Vision, another "bet the ranch" calving ease sire recommended for heifers. 45D boasts an 81 pound unassisted birth weight out of a 1300 pound first calf heifer that we purchased from the late Jack Hart of Brookmore Angus. Balanced set of EPD's and a picture perfect udder, a dam who may make it to our front pasture group of cows.



Jindra **Double Vision**



RB **Tour Of Duty 177**

Lot 59



SHR Tour Of Duty 42D

Lot 59 1944584 SHRX 42D 27/01/2016 Male

WERNER WAR PARTY 2417
R B TOUR OF DUTY 177 1829420
B A LADY 6807 305

HF TIGER 5T
MVF ZARA LISA 13Z 1660076
MVF ZARA LISA 162X

CONNEALY ONWARD
BAAR USA LADY JAYE 489
VERMILION DATELINE 7078
G D LADY HI FLYER 302
HF KODIAK 5R
HF ECHO 84R
BUSHS GRAND DESIGN
MVF ZARA LISA 327R

EPD	BW	WW	YW	Milk	TM	ACC	BW	Adj. WW	YW
1.1	54	99	31	58			80	709	1230

A stack of proven pedigree on both sides of SHRX 42D. Tour Of Duty, a bull that's made his impact in the industry as one of the highest EPD's sires and highest indexing cows in the industry, ½ brother to Active Duty, maternal side. Grand dam MVF Zara Lisa 162X, a Bushs Grand Design daughter continues to be our top performing dam at Swan Hills, the progeny carries on at Swan Hills.

Lot 60



SHR Tour Of Duty 47D

Lot 60 1944586 SHRX 47D 30/01/2016 Male

WERNER WAR PARTY 2417
R B TOUR OF DUTY 177 1829420
B A LADY 6807 305

TGA BLACKMAN 8311U
NORTHERN VIEW RUTH 89Y 1623545
NORTHERN VIEW RUTH 92U

CONNEALY ONWARD
BAAR USA LADY JAYE 489
VERMILION DATELINE 7078
G D LADY HI FLYER 302
GEIS BLACKMAN 224 05
TGA MS DELEGATE 3145N
NORTHERN VIEW QUANTUM 82R
CRESCENT CREEK RUTH 6F

EPD	BW	WW	YW	Milk	TM	ACC	BW	Adj. WW	YW
2.1	49	96	22	47			85	660	1205

A Tour Of Duty son out of a Northern View Ruth cow going back to the Crescent Creek Ruth 6F. If you are looking for maternal strength in a pedigree, here's a bull that's stacked on both sides of his pedigree, a bull out of a great Lady Cow family at Riley Bros. in Wisconsin and the Ruth cow family that doesn't need any introduction.

SHR Best Interest 65D

Lot 61 1944594 SHRX 65D 22/02/2016 Male

S A V BEST INTEREST 0136
J SQUARE S BEST INTEREST 327A 1749540
 SOO LINE STAR MAIDEN 1067

MVF VRD DATELINE 23P
MVF TIBBIE 323X 1574962
 MVF TIBBIE 20S

S A V BISMARCK 5682
 S A V EMBLYNETTE 8172
 SOO LINE YELLOWSTONE 6344
 SOO LINE STAR MAIDEN 9075
 VERMILION DATELINE 7078
 GREENBUSH TIBBIE 5H
 G A R RETAIL PRODUCT
 MVF TIBBIE 813P

EPD	BW	WW	YW	Milk	TM	ACC	BW	Adj. WW	YW
3.2	47	81	20	44		85	691	1100	

65D is a bull providing a modern frame score with a stacked up pedigree going back to the famous Tibbie cow family at MVF, 52F and 813P. Sired by our J square s SAV best interest 327A purchased right here at the Blue Collar Bull sale from Jordan Sies in 2014. 327A goes back to the SOO Line Star Maiden 1067.

Lot 61



SHR Revere 67D

Lot 62 1944598 SHRX 67D 05/03/2016 Male

S A V REVERE 1180
SHR REVERE 127B 1821019
 BH ECHO 1Y

VISION UNANIMOUS 1418
SHRX ZARA LISA 1B 1809098
 MVF ZARA LISA 13Z

S A V 707 RITO 9969
 A C DUKE GIRL 57
 HF TIGER 5T
 HF JUNE 55W
 VISIONTOPLINE ROYAL STOCKMAN
 VISION EDELLA 665
 HF TIGER 5T
 MVF ZARA LISA 162X

EPD	BW	WW	YW	Milk	TM	ACC	BW	Adj. WW	YW
1.7	52	96	25	51		74	777	1080	

67D is a bull recommended for heifers, boasting a 74 pound birth weight and out of an Unanimous daughter who made it to the junior female championship at Agribition 2015. 1B is a modern 1250 pound cow with loads of milk; she is out of the Tiger mother who raised SHR 42D. Lot 60

Lot 62



SHR Revere 73D

Lot 63 1944600 SHRX 73D 15/03/2016 Male

S A V REVERE 1180
SHR REVERE 127B 1821019
 BH ECHO 1Y

S A V WALL STREET 7091
SMX BLACKCAP 101W 1671858
 WILP/HAR BLACKCAP 075L

S A V 707 RITO 9969
 A C DUKE GIRL 57
 HF TIGER 5T
 HF JUNE 55W
 S A V NET WORTH 4200
 CHAMPION HILL GEORGINA 2175
 K W C C PACKER 386 M C C
 WILP/HAR BLACKCAP 14C

EPD	BW	WW	YW	Milk	TM	ACC	BW	Adj. WW	Feb 21 WW
1.0	38	77	22	41		75	700	1195	

SHRX 73D is a moderate, smooth made modern framed bull sired by our SHR 127B, a S A V Revere son we sold a half interest to Greg Boughton for \$ 24,000 in the 2015 sale. A calving ease specialist who will be breeding our heifer pen this year. His calves have averaged so far at Swan Hills at 71 pounds, a true calving ease sire with great EPD spread from birth to weaning. The dam 101W acquired from the Semex donor group caught my eye at Dr. Immerkar's Embryo Facility, sired by S A V Wallstreet and stacked on the maternal side with WILP/HAR Blackcap, EXT, and Rito.

Lot 63



SWAN HILLS... Percentage Bulls - 3/4 ANGUS 1/4 SIMMENTAL



Limestone **Tilt**

Maternal Sire to Lots 65,65 & 67

Lot 64



SHRX 59D

Lot 64 SHRX 59D 28/02/2016 Male

S A V BEST INTEREST 0136
J SQUARE S BEST INTEREST 327A 1749540
SOO LINE STAR MAIDEN 1067

S A V BISMARCK 5682
S A V EMBLYNETTE 8172
SOO LINE YELLOWSTONE 6344
SOO LINE STAR MAIDEN 9075

DAM **ANGUS/SIMMENTAL**

ACC	BW	Oct 7 WW	Feb 21 YW
	80	891	1235

A mid framed Best Interest son with loads of thickness and hip. 59D is a bull that will catch your eye, out of a 1300 pound dam. Solid black with a blaze.

Lot 65



SHRX 56D

Lot 65 SHRX 56D 15/02/2016 Male

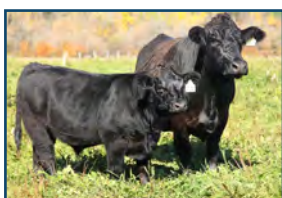
S A V BEST INTEREST 0136
J SQUARE S BEST INTEREST 327A 1749540
SOO LINE STAR MAIDEN 1067

S A V BISMARCK 5682
S A V EMBLYNETTE 8172
SOO LINE YELLOWSTONE 6344
SOO LINE STAR MAIDEN 9075

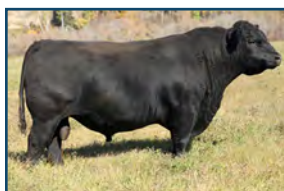
DAM **ANGUS/SIMMENTAL**

ACC	BW	Oct 7 WW	Feb 21 YW
	80	837	1192

An 80 pound Best Interest, offering a maternal strength from both sides of his pedigree. 26Y is a thick, modern dam with loads of milk, check him out for your cross breeding program with a little more heterosis genetic makeup with the 1/4 Sim genetic to go along with an Angus pedigree.



Lot 66 with his Dam



S A V **Best Interest 3272**

Lot 66



SHRX 77D

Lot 66 SHRX 77D 16/03/2016 Male

S A V 707 RITO 9969
S A V REVERE 1180 1717315
A C DUKE GIRL 57

RITO 707 OF IDEAL 3407 7075
BR POLLY 8077-472
CAR TRACKER 305
A C DUKE GIRL 330

DAM **ANGUS/SIMMENTAL**

ACC	BW	Oct 7 WW	Feb 21 YW
	68	645	985

A moderate framed S A V Revere son offering a 68 pound birth weight. Look to 77D to moderate the frame score and offer a load of milk to your herd, 21Y continues in our herd for all the characteristics we demand of our cow herd.

ANGUS INFLUENCE COMMERCIAL HEIFERS...

Lot 68 - **Two Pens Of Three**

Consigned by:
Dale Minhinnick
Box 31 Invermay, SK S0A 1M0
Cell-306-593-7866

Lot 69 - **20 Heifers - Pens of 3 or 5**

Consigned by:
Double V Cattle Co-Matt Veer
Box 2832 Melville, SK S0A 2P0
Cell-306-728-1582
Please note if you purchase heifers from Double V they are willing to buy the heifers' first calves back from you.

Lot 70 - **Pen Of Five**

Consigned by:
Joe & Ken Scherloski
Box 89 Gerald, SK S0A 1B0
1-306-743-2400

Lot 71 - **Pens Of Five**

Consigned by:
Jeff & Sheri Davis
Box 1474 Roblin, MB R0L 1P0
1-204-207-0104

Lot 72 - **Pen Of Five**

Consigned by:
Kevin Clelland
Box 2745 Swan River, MB
1-204-281-0961

Lot 73 - **Pen Of Three**

Consigned by:
Dam Farms
Darren & Angela Mullin
Box 3045 Swan River, MB
1-204-731-0004



SPONSORS...



ON THE HORIZON

THERE'S *NOTHING* LIKE THE PROMISE OF A NEW SEASON

From top-quality Proven® Seed forages to grazing and silage corn to livestock handling equipment – we're with you. So much riding on your farm, so many ways to profit from our experience. **BRING IT ON**

cpsagu.ca

Proven®
SEED

CPS Yorkton

CPS Theodore

CPS Canora

CPS Swan River

CPS Melville

CPS Lemberg

Proven® Seed is a registered trademark of Crop Production Services (Canada) Inc. CPS CROP PRODUCTION SERVICES and Design is a registered trademark of Crop Production Services, Inc. 02/17

PLANT NUTRITION | SEED | CROP PROTECTION | FUEL | STORAGE & HANDLING | ECHELON

Crop
Production
Services 



PRAIRIE CO-OP is dedicated to help **GROW, FUEL, EQUIP, BUILD** and **FEED** your farm. With knowledgeable staff and exceptional products, Prairie Co-op has a location to serve your farm's needs.

For **PETROLEUM** call:

- Melville — 306.728.5811
- Cupar — 306.723.4428
- Lipton — 306.336.2333
- Kelliher — 306.675.2156
- Ituna — 306.795.2441
- Lemberg — 306.335.2461

For **SEED, FERTILIZER** and **CHEMICAL** call:

- Cupar — 306.723.1200
- Strasbourg — 306.725.3200
- Kelliher — 306.331.0552
- Lipton — 306.336.2333

For **HOME CENTRE, LUMBER** and **FEED** call:

- Melville — 306.728.4461
- Fort Qu'Appelle — 306.332.0111
- Ituna — 306.795.2441
- Lipton — 306.336.2333
- Cupar — 306.723.4428
- Kelliher — 306.675.2156
- Lemberg — 306.335.2461

For **AG EQUIPMENT** call:

- Cupar — 306.723.1200
- Lipton — 306.336.2333
- Ituna — 306.795.2441
- Melville — 306.728.5811
- Strasbourg — 306.725.3200



SPONSORS...

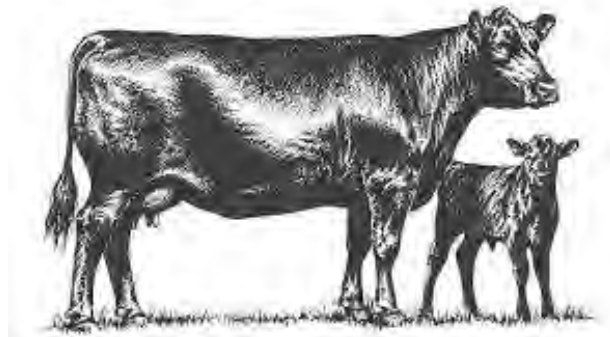
Hackman Feeds

Calving time is here, see Hackman Feeds for all your supplies. We have colostrum, scour guard vaccines, scour boluses, diatomaceous earth, medicated calf ration, milk replacer, e cell, electrolytes, vitamins and calf span.

We have a variety of loose minerals and tubs to get your cows and bulls ready for breeding season.

Call us at (306) 786-7713

385 5 Avenue North Yorkton, SK S3N 2Z9, Canada



PILLER SERVICE LTD.

AG, SEMI & AUTO REPAIR & PARTS

MOBILE SERVICE, MOBILE WELDING

AIR CONDITIONER REPAIRS

PHONE 306.748.4800 CELL 306.222.6675

FAX 306.784.4801

HIGHWAY #22 EAST

BOX 329, NEUDORF, SK S0A 2T0



Universal Haybine Reverser



Kits contain 4000psi hoses , fittings, toggle switch, cable, connectors and install manual.

A flip of a switch from your tractor seat saves time, money and ensures operator safety. Kit is configured to reverse only the motor, without disturbing hydraulic filtration. 37 gpm flow. Available for most makes and models of haybines.

QVB Enterprises Inc. 306-745-3801

Box 1238
Esterhazy, SK S0A 0X0

qvb@xplornet.com
www.qvbenterprises.com

Friendly Acres Seed Farm

Robert & Kevin Elmy

306-744-2779 or 744-2332

www.friendlyacres.sk.ca

Twitter @KevinElmy



Your forage, corn, soybean, and cover crop seed provider

TH2, Stealth, 10-5, Response Wet Brand, and Rugged Salt tolerant alfalfa; non bloat legumes, all grasses, millets, sorghum sudan and native species

Tillage Radish, Turnip, radish, sugar beets, kale, hybrid brassica, forage rape

Custom blending. We do blends to fit your needs, seeded at the right rate.

Corn

We trialed what we sell so we know what the cows like. They don't like all corn varieties. We have RR, conventional, & organic varieties available.

Canamaize - 440 (conventional)

Hyland - BAXXOS, HL SR22, HL SR35

Thunder Seeds - TH 2146, TH 8781, TH 3382

SPONSORS...

AgraTactics Agronomy

306-788-2167

25 Myrtle Ave.
Yorkton, SK
S3N 4G5



306-450-0745
306-262-2524



BryJor Construction



Dr. Deana Schenher
DVM

1175 Queen St.
BOX 3340
Melville, SK S0A 2P0
Tel: 306.728.2633
Fax: 306.728.2643


ANIMAL HEALTH CENTRE
— of MELVILLE P.C. LTD —

www.melvillevet.com

BIEBER TRUCKING

Duff, Saskatchewan
306-728-4999 or 306-728-7854

Congratulations on your 11th Annual Blue Collar Bull Sale



Darren Wandy
Owner

Tel: (306)728-4550
Cell: (306)521-0429
Email: d_wandy@hotmail.com

Double D Fencing Company

Specializing In Livestock Fencing Solutions

GOLLY'S TRENCHING

PO Box 11
GOODEVE, SK S0A 1C0

- COMPLETE WATER SEPTIC SYSTEM
- BACKHOE SERVICE
- DIRT AND GRAVEL HAULING - END DUMP TRAILER
- PAYLOADER WORK

E & H Redi-Mix


Agri-Park Road - Melville
306-728-5626
ehredimix@hotmail.com



- Redi-Mix Concrete
- Excavating • Gravel
- Insulated Concrete Forms

Herb Schick **Glen Schick** **Elmer Schick**
306-730-7775

HARDROCK CORRAL CLEANING



DERRYL W. ZENKEWICH
Box 24
Ituna, SK S0A 1N0

Tel: 306-795-2234
Cell: 306-795-7607
Fax: 306-795-3453

SPONSORS...

FARRELL
AGENCIES LTD.

 Bus: (306) 783-4477 Fax: (306) 786-7577
Toll Free: 1-800-268-3675
Website: www.farrellagencies.com
email: farrellagencies@sasktel.net

Committed to You & Your Community

HILLSIDE WELDING

 Fabricating,
Repairing, Mobile Welding,
Hydraulic Hoses, Certified Welder
R.R.#1 MELVILLE, SK. S0A 2P0
P.H. 728-4095 OR 728-8375 CELL
FAX 728-4782

 **Kelvin Hawreluik**

Box 32
Sheho, SK
S0A 2T0
306-269-7323
E-mail: fasthorses@sasktel.net

Genex Cooperative, Inc.
A Subsidiary of Cooperative Resources International

Hitching Post

Tom Walsh

17 Betts Avenue
Yorkton, SK
S3N 1M1

Phone: (306) 783-5629
Fax: (306) 783-4629
Email: hitchingpost@sasktel.net
www.hitchingpostyorkton.ca

www.horizoncu.ca

Branches in:

Melville	306-728-5425
Grayson	306-794-2155
Grenfell	306-697-2803
Neudorf	306-748-2255
Wolseley	306-698-2252

 **HORIZON**
CREDIT UNION
Today, Tomorrow, Together

See us for all your financial needs.

Proudly Supporting the Communities We Serve

MK HOLDINGS INC.
HAIL INSURANCE AGENT
JIM MORRISON
HOME: (306) 783-5980
CELL: (306) 621-7873

JJL
Photography

Jenna Loveridge
Melville Sk.
(306) 728-3823 or (306) 730-8478
jjlangus@live.com
www.jjllivestock.com



MNP
LLP

Brian G. Loos
Agricultural and Business Advisor

Box 2590
2424 Westwood Drive
Humboldt, SK S0K 2A0

P: 306.682.2673 ext. 7554
C: 306.621.9099
F: 306.682.5910
E: brian.loos@mnp.ca

MNP.ca

ACCOUNTING > CONSULTING > TAX

SPONSORS...

WIRELESS COWCAM SYSTEMS



Allen Leigh
Security & Communications Ltd.

*Save more calves,
make more money
and get more sleep!*



Mini PTZ Wireless
Cowcam System

View From Your
Smartphone!




324 X Zoom,
Wireless PTZ Camera

Trusted Quality, Trusted Support Trusted Service!

545 Assiniboine Ave., Brandon, MB R7A 0G3 **1-866-289-8164**

www.allenleigh.ca   info@allenleigh.ca

Roundup BUTCHER SHOP

Custom Meat Processing & Sausage Making

Laurel Wiebe

Box 175
Bredenbury, SK
S0A 0H0

Phone: 306-898-2255
Fax: 306-898-2252
email: roundupbutchershop@gmail.com



MELVILLE VETERINARY CLINIC

306-728-4456 WWW.MELVILLEVETCLINIC.COM

FRED THUE CONSTRUCTION LTD.

cell (306) 535-5297
home (306) 949-5656
fthue@sasktel.net



SPECIALIZING IN POLE SHEDS, BARNs, STEEL BUILDINGS AND CONCRETE



WESTSIDE
CONSUMER
SALES & SERVICE

Hwy #15 West
Melville, SK
728-2580
Eric Sagan

- * Affordable Delta Tires
- * Sandblasting & Welding
- * In Farm Repair
- * Power Volt Batteries
- * Filters
- * Antifreeze
- * Oil
- * V-Belts
- * Cutting Parts
- * Guards
- * Sections
- * Canvas



P.O. Box 1030
Highway #10 East
Yorkton, SK S3N 2X3
www.yorktonnewholland.com



NEW HOLLAND
AGRICULTURE

Brad Guenther
General Manager

Bus: 306.783.8511
Fax: 306.782.5595
Cell: 306.621.7978
Email: brad@yorktonnewholland.com

In Partnership with Raymore and Watrous New Holland

Yorkton Ag & Auto Supply

Bryce & Della Arnold
Owners / Operators

Box 100 • 552B Broadway St. East
Windsor Centre - Hwy. #10 East
Yorkton, Saskatchewan S3N 2V6

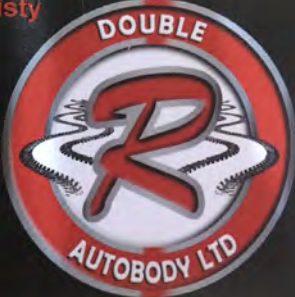
(306) 782-1434
Fax: (306) 783-1415

Rob Graff & Rachael Yuristy
Bodyshop Owners

Phone: 306-728-4565
Cell: 306-730-6775
Fax: 306-728-3493
Email:
bodyshop@doublerautobody.com
SGI DIAL-A-CLAIM: 1-800-667-1480

1231 Queen Street
Box 3509
Melville, SK S0A 2P0

"We meet the nicest people by accident!"





Fred Lowenberger

Product Specialist

Melville Motors Ltd.

166 Service St., Highway 10 North

Melville, SK S0A 2P0

Cell: (306) 730-7969

Bus: (306) 728-5457

Fax: (306) 728-4957

Toll Free: 1-800-462-6844

Email: fredl.melvillemotors@sasktel.net



Visit us on line at :
www.melvillemotors.com

Follow us on:
www.facebook.com/Melville-Motors-Ltd
@MelvilleMotors



225 Main St. Melville, Sk.

See Matt's full online catalog at
www.mattsfurniture.ca

Kamsack (306) 542-3501 Fort Qu'Appelle (306) 332-6911 Melville (306) 728-3772 Foam Lake (306) 272-3950

WHIRLPOOL CARES SAVINGS EVENT

March 31-April 26th, 2017

SAVE UP TO 25% on qualifying Whirlpool® major appliances

For the best deals around, come into Matt's. He is always ready to bargain!

C.E.T.A. Certified E.T. Facility | Donor Housing | Recipients Available

SWAN VALLEY VETERINARY CLINIC

Dr. Keith Immerkar, D.V.M.

Box 388, Highway 10 East
Swan River, MB R0L 1Z0
f: 204.734.9530
c: 204.734.0720
t: 204.734.4565

swanvalleyvetclinic.com

YORKTON HARVEST SHOWDOWN 2016 CHAMPIONS...



SHR

Martina Tibble 5th Place
Calgary Stampede



Northern View

Grand Champion
Pen Of Bulls



SHR

Grand Champion
Pen Of 3 Open Heifers



SHR

Reserve Champion Pen of 3
Bred Heifers



Northern View

Champion Pen Of 3
Futurity Heifer Calves



Northern View

Reserve Champion Pen of 3
Open Heifers

2016 HARVEST SHOWDOWN CHAMPIONS Blue Collar Bull Sale, Yorkton, SK

TERMS AND CONDITIONS

Breeding Guarantee

All cattle are sound and right, and all with a responsible breeder guarantee of satisfaction. In the event of any unlikely dispute, the regular terms and conditions, standard with the Canadian Angus Association shall apply.

Warranty

Blue Collar consignors guarantee to sell you a bull that is structurally sound and has passed a semen test performed by a licensed veterinarian. Should the bull fail to perform as a satisfactory breeder (unable to service cow or heifer) he will be replaced with a bull of equal value. If this is not possible an adjustment will be made to reflect the value of the bull or a credit will be given towards the purchase of another bull. We guarantee to provide you with a breeding bull for the season. We will not however provide replacement or adjustment for death, physical injury or mismanagement. Claims must be made by September 1 of year of purchase. With this in mind, we cannot stress enough the importance of insurance on your bull purchases.

Insurance

Insurance agents will be available sale day, or you can make other insurance arrangements through you own agent. Insurance must be purchased on all bulls that return to the respective farms.

Sight Unseen Program

Tell us your requirements and we'll select bulls that meet those orders. If you are not 100% satisfied when the trailer is in your yard, you don't own him, no questions asked.

Delivery

The Blue Collar Bull Sale group will assist with delivery where ever possible. Receive a \$50 discount on your bull purchased if you take your bull home the day of or the day after the sale. Free delivery on bulls purchased within a 100 mile radius. Over 100 mile radius, delivery and cost to be worked out between the buyer and the individual consignor to the sale. Bulls returned to the consignor's farm must be insured. The buyer then assumes full responsibility for the bull. Proper care and attention will be given to all bulls returned to the farm. Bulls returning to the consignor's farm will be kept at no charge until May 1 with a cost of \$2/day after May 1. We would ask that the buyers work with us to have all bulls delivered prior to June 1.

Terms of Sale

Cash or cheque at par, payable to Clerks of the sale on sale day, unless prior arrangements have been made. No release will be given until satisfactory settlement has been made.

** All persons who attend the sale do so at their own risk and the owners, sale management and sale staff assume no liability, legal or otherwise, for property loss or for any accidents that may occur.



BLUE COLLAR BULL SALE
C/O BOX 211
NEUDORF, SK
S0A 2T0



PLEASE BRING THIS CATALOGUE WITH YOU TO THE SALE

Created By
TODAY'S
PUBLISHING