



# Beck Farms & McCoy Cattle Co.

Charolais and Hereford Bull Sale



Wednesday

*8<sup>th</sup> Annual Bull Sale*  
**February 22, 2017**

**SALE FACILITY AT BECK FARMS, MILESTONE, SK**



*Welcome...*

left to right:  
Jorja Beck, Haley Debenham,  
Kylie Beck, Morgan Debenham  
Kaden Beck, Mason Beck,  
Donna and Gary Beck  
(proud grandparents)



Wade, Cynthia,  
Mason & Jorja

*Wade*



Kylie, Tami, Mark and Kaden Beck

**BECK  
FARMS**

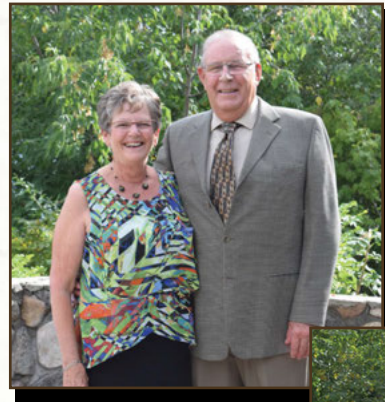
**Gary & Donna Beck  
Wade & Cynthia Beck  
Mark & Tami Beck**  
Box 5, Lang, SK SOG 2W0  
Wade: 306-436-4564  
wbeck@sasktel.net

On behalf of Beck Farms I would like to welcome you to our annual bull sale. The cattle market has definitely changed over the past twelve months; however, it is painfully obvious that quality pays. In particular, the Charolais cross advantage was extremely apparent this past fall at the auction mart.

Every year we work diligently to put forth the best set of Charolais bulls we possibly can. This year is no exception. The sale offering this year is the largest it has ever been and definitely the deepest. Uniformity is important for commercial producers in selling your calves. Our breeding program is designed with this in mind. You will find many 1/2 and 3/4 brothers through the sale offering.

In an effort to help our customers, we are offering a bull development service for these yearling bulls. You will find details of this later in the catalog.

Please join us for lunch on sale day in our heated sale barn on the farm. Be prepared to stay after for our annual 'fish fry'. We hope to see you all on February 22, the bulls and the hospitality is guaranteed not to disappoint.



Gary & Florence

*Welcome...*



Chad, Carrie,  
Emma, Megan & Kalla

It is with great pleasure that I welcome you to our 8th annual bull sale on behalf of McCoy Cattle Co. I am pretty amazed that this is already our 8th bull sale in this format but here we are. The folks at Beck Farms have been a great sale partner from Day 1. It has been especially gratifying to move the sale back to their operation over the past 3 years. We have definitely found synergies in offering multiple breeds via the same event.

2017 is a year of change for us. This is the first year we will not offer Gelbvieh bulls in our sale. We sincerely appreciate the support our Gelbvieh customers have given us over the past 20 years. Gelbvieh genetics will continue to have a place in our commercial program as you will see at the back of the catalog.

We are very excited about the future of the Hereford breed in our local market and in Western Canada in general so have decided to focus our efforts there. The type and quality of Hereford bull we are producing has evolved dramatically over the past 8 sales. Simply put these Hereford bulls create a lot more real financial value for your program than they did 5 or 10 years ago. More calving ease, greater maternal function, higher end carcass value, and greater pay weight just to name a few of our areas of focus.

This is without a doubt the deepest, most consistent set of bulls that both Becks and ourselves have offered. We spend a tremendous amount of time to source the best genetics from across North America to drive the genetics in our programs forward. Please join us on February 22 to evaluate our efforts and enjoy some of our hospitality at the same time.



**McCoy Cattle Co.**

**The Nicholas Family**  
Box 479, Milestone, SK SOG 3L0  
Gary & Florence: 306-436-4301 Chad & Carrie: 306-436-2086  
Fax: 306-436-4613  
www.mccoycattle.com nicholas@mccoycattle.com

## ***From the Desk at T Bar...***

Welcome to the 8th Annual Beck-McCoy Bull Sale... a one-stop center for all your herd bull needs. For nearly half of a century, the magic cross has been buckskin. This Charolais/Hereford mating has led the marketplace in both price and kind by combining the hair, docility and do-ability of the British and the performance and feedlot gain of the Continental.

Both hosts are active and dedicated second generation breeders with young families all on track with the same goal in mind. The operations are very similar... the herds are run ranch style in the same manner as that of their commercial bull customers. Soundness of limb and foot combined with high milk values are mandatory traits dictated by the owners and Mother Nature.

The Beck Charolais program ranks in the top of Charolais producing operations in the nation. Although performance is a given, they have carefully monitored calving ease and udder quality in their program. The bulls offer uniformity, soundness, hair and muscle shape. The repeat customer base tells us that Beck bulls work for those who choose to use them!

The McCoy bulls are bred and geared for low birth weight, easy calving and high maternal values. Chad has never chased fads but rather selected and maintained the type of Hereford that would work, firstly in his own environment and then most importantly for his customers. For those who are looking for easy calving sires which will give you a degree of hybrid vigor on any breed you choose to use them on...look no further! As an added feature, McCoy is offering a very uniform and broody package of F-1 Hereford/Gelbvieh cross heifers, ideal for any herd expansion.

Plan to be with us at Beck Farms, Milestone, Saskatchewan and change the direction of your program. Come early, view the bulls and be guests for a noon luncheon.

If we may be of assistance prior to or sale day feel free to call any of the T Bar Team or myself, as we are willing to assist you in a professional, confidential manner.

See you at Becks!

## ***Chris***



**Chris Poley**



**Ted Serhienko**



**Shane Michelson**



**Ben Wright**

## **Sale Management:**



4 3342 Millar Avenue, Saskatoon  
Saskatchewan S7K 7G9  
Ph: 306-933-4200 Fax: 306-934-0744  
info@tbarc.com www.buyagro.com

## ***General Information...***

### **Point of Sale...**

Each animal becomes the risk of purchaser at time of sale.

### **Free Wintering...**

All bulls will be developed free of charge until June 1, 2017. A minimal charge will be applied should bulls need to be maintained beyond June 1.

### **Breeding Guarantee...**

We guarantee to provide a sound breeding bull capable of passing a semen test at 14 months of age. Any bull failing to be a satisfactory breeder will be replaced with a bull of equal value and quality, or a credit given towards purchase of another bull.

### **Insurance...**

Alameda Agencies, Bonnie Thompson 306-489-2258

### **Announcements...**

Errors in catalog will be corrected by announcements from the block. Announcements will take precedence over any printed material.

## **Hotel Accommodations...**

### **Microtel Inn & Suites**

88 Grace St., Weyburn, SK  
(306) 842-5700

### **Holiday Inn Express & Suites**

4255 Albert St S. Regina, SK S4S 3R6  
(306) 789-5888

## **Sight Unseen Purchase Program**

Let's face it – we're busy, you're busy, life is busy. Whether it's a wedding, farm life, or a kid's hockey game that prevents you from attending our sale, it is not a problem. Inform us about your cowherd, what your goals and expectations are, and we will do our best to send you a bull that meets your needs. No one knows these bulls better than we do. When we deliver the bull, you must be 100% satisfied with your purchase or we will load the bull up and bring him home – no questions asked.

# BECK FARMS



## McCoy Cattle Co.

### 8<sup>th</sup> Annual Bull Sale

2:00 PM - Wednesday, February 22, 2017

Beck Farms  
Milestone, Saskatchewan

Offering 91 Bulls  
5 Charolais Two-Year-Olds  
45 Charolais Yearlings  
41 Hereford Yearlings

#### Sale Day Phone...

Chad	306-436-7300 (C)
Carrie	306-436-7425 (C)
Wade	306-436-7458 (C)
Cynthia	306-436-7354 (C)
Jamie O'Shea	519-588-2241 (C)

#### Sale Staff...

##### Auctioneer...

Chris Poley 306-220-5006 (C)

##### Ringside...

Shane Michelson	403-363-9973 (C)
Nate Marin	306-869-7130 (C)
Helge By	306-536-4261 (C)
Ben Wright	519-374-3335 (C)

#### Sale Management...

##### T Bar C Cattle Co. Ltd.

4-3342 Millar Avenue  
Saskatoon, SK S7K 7G9  
P: 306-933-4200  
F: 306-934-0744  
E: info@tbarc.com  
www.tbarc.com



#### From Milestone...

On east side of Milestone take Range Road 2192 4 miles south.  
Watch for signs!

#### Watch & Online Bidding...

Can't make it to the sale? **Watch & Bid Online.**  
With DLMS you can Watch, Listen & Bid on your computer just like you were there with online bidding over the internet

**Instructions for Viewing And Bidding At the Sale**

Visit [www.dlms.ca](http://www.dlms.ca), Fill out the registration form located under registration and sign-up for your free user account to select a username and password.

**BIDDERS** - To be approved as a bidder, Log in and click BUYER APPROVAL tab, select the sale you are interested in bidding at and click sign up.

For more information or for help getting approved Call:  
Whitney Bosovich 780.991-3025 or Mark Shologan - 780-699-5082

Direct Livestock Marketing Systems  
www.dlms.ca  
To find an agent or sale near you today visit [www.dlms.ca](http://www.dlms.ca)  
Purebred Sales • Daily Presort Sales  
Direct Off-farm Sales every Thursdays at 10:00 am

View the catalogue online at  
[www.BuyAgro.com](http://www.BuyAgro.com) or [www.mccoycattle.com](http://www.mccoycattle.com)

For service/information in French, please contact  
Cynthia Beck at 306-436-7354 or at [wbeck@sasktel.net](mailto:wbeck@sasktel.net)  
Pour le service ou l'information en français, svp contactez  
Cynthia Beck à 306-436-7354 ou à [wbeck@sasktel.net](mailto:wbeck@sasktel.net)

# BECK FARMS

In 2012, we were the runner up bidders on Kingston. We followed his progress in the ProChar, Johnson, and Wrangler herds in Alberta and in 2015 when the chance came to buy an exclusive semen pack in Kingston we jumped at the opportunity. Kingston moderate birth weight, adds hair in an eye appealing package. Kingston really crossed well with our Panama daughters as can be seen in the 8 ¾ brothers that are in the sale from this cross. Kingston has been used successfully on both heifers and cows.

**19 yearling sons sell.**



Kingston

## Ref Sire

SPARROWS *Kingston* 139Y

PMC341135

SB 139Y

FEBRUARY 6, 2011

POLLED

BW	WW	YW	MILK	TM
-0.3	38	88	34	53

## 1

BECK'S *Memphis* 609D

PMC707620

BECK 609D

JANUARY 12, 2016

POLLED

WINN MANS LANZA 610S  
**SPARROWS KINGSTON 139Y**  
 SPARROWS DELIGHT 374P

SPARROWS DURANGO 585P  
 WINN MAN MERIT 036K  
 SPARROWS MATADOR 7K  
 SPARROWS DELIGHT 74L  
 LOPEZ

SPARROWS PANAMA 826U  
**BECK'S KEY 12B**  
 BECK'S RED KEY 137X

SPARROWS DAISY MAY 67P  
 BECK'S RICKY BOBBY 10S  
 BECK'S MISS RED KEY 37N

CE	BW	ADJ 205DW	365 DW	BW	WW	YW	MILK
SA	86	800	1380	1.3	43	95	25



Lot 1

## 2

BECK'S *Nebraska* 634D

PMC707610

BECK 634D

JANUARY 29, 2016

POLLED

WINN MANS LANZA 610S  
**SPARROWS KINGSTON 139Y**  
 SPARROWS DELIGHT 374P

SPARROWS DURANGO 585P  
 WINN MAN MERIT 036K  
 SPARROWS MATADOR 7K  
 SPARROWS DELIGHT 74L  
 LOPEZ

SPARROWS PANAMA 826U  
**BECK'S TASSEL 21A**  
 CHARDEL TASSEL 333N

SPARROWS DAISY MAY 67P  
 SPARROWS ALLIANCE 513G  
 CHARDEL TASSEL 650F

CE	BW	ADJ 205DW	365 DW	BW	WW	YW	MILK
UA	90	775	1384	0.0	41	88	24



Lot 2

Beck Charolais Yearlings...



3

BECK'S *Tennessee* 603D

PMC707629      BECK 603D      JANUARY 6, 2016      POLLED

WINN MANS LANZA 610S  
**SPARROWS KINGSTON 139Y**  
 SPARROWS DELIGHT 374P

SPARROWS PANAMA 826U  
**BECK'S TIANNA 45B**  
 BECK'S TIANNA 107U

SPARROWS DURANGO 585P  
 WINN MAN MERIT 036K  
 SPARROWS MATADOR 7K  
 SPARROWS DELIGHT 74L  
 LOPEZ  
 SPARROWS DAISY MAY 67P  
 WINN MANS THE GAME 102L  
 BECK'S TIANNA 7K

CE	BW	ADJ 205DW	365 DW	BW	WW	YW	MILK
SA	84	773	1275	1.3	44	95	21

4

BECK'S *Outlaw* 637D

PMC707593      BECK 637D      JANUARY 30, 2016      POLLED

WINN MANS LANZA 610S  
**SPARROWS KINGSTON 139Y**  
 SPARROWS DELIGHT 374P

SPARROWS PANAMA 826U  
**BECK'S TEQUILA 32Y**  
 BECK'S TEQUILA 132U

SPARROWS DURANGO 585P  
 WINN MAN MERIT 036K  
 SPARROWS MATADOR 7K  
 SPARROWS DELIGHT 74L  
 LOPEZ  
 SPARROWS DAISY MAY 67P  
 BECK'S RICKY BOBBY 10S  
 BECK'S TEQUILA 32M

CE	BW	ADJ 205DW	365 DW	BW	WW	YW	MILK
UA	107	726	1377	2.2	40	90	25



5

BECK'S *Backstage* 625D

MC707591      BECK 625D      JANUARY 23, 2016      HORNED

WINN MANS LANZA 610S  
**SPARROWS KINGSTON 139Y**  
 SPARROWS DELIGHT 374P

VIRGIL SC  
**BECK'S POSH 24Y**  
 BECK'S POSH 25P

SPARROWS DURANGO 585P  
 WINN MAN MERIT 036K  
 SPARROWS MATADOR 7K  
 SPARROWS DELIGHT 74L  
 LE REBEL  
 RONDELLE  
 SPARROWS ALLIANCE 513G  
 BECK'S POSH 25M

CE	BW	ADJ 205DW	365 DW	BW	WW	YW	MILK
UA	92	766	1233	-0.6	43	85	23



6

BECK'S *Kingdom* 610D

PMC707632      BECK 610D      JANUARY 12, 2016      POLLED

WINN MANS LANZA 610S  
**SPARROWS KINGSTON 139Y**  
 SPARROWS DELIGHT 374P

BECK'S TITAN 818U  
**BECK'S STARLIGHT 69B**  
 BECK'S STARLIGHT 41T

SPARROWS DURANGO 585P  
 WINN MAN MERIT 036K  
 SPARROWS MATADOR 7K  
 SPARROWS DELIGHT 74L  
 SPARROWS AUTHENTIC 6S  
 BECK'S MARIE 29R  
 SPARROWS ALCATRAZ 18N  
 BECK'S STARLIGHT 16K

CE	BW	ADJ 205DW	365 DW	BW	WW	YW	MILK
SA	96	871	1393	1.7	47	89	29

*Beck Charolais Yearlings...*

**7**

BECK'S *Arizona* 619D

PMC707592      BECK 619D      JANUARY 20, 2016      POLLED

WINN MANS LANZA 610S  
**SPARROWS KINGSTON 139Y**  
 SPARROWS DELIGHT 374P

SPARROWS PANAMA 826U  
**BECK'S MISS RED KEY 28Y**  
 BECK'S MISS RED KEY 37N

SPARROWS DURANGO 585P  
 WINN MAN MERIT 036K  
 SPARROWS MATADOR 7K  
 SPARROWS DELIGHT 74L  
 LOPEZ  
 SPARROWS DAISY MAY 67P  
 SPARROWS VALLEJO 14J  
 KEYD MISS RED KEY 14C

CE	BW	ADJ 205DW	365 DW	BW	WW	YW	MILK
UA	90	772	1350	0.4	41	91	26



Lot 7

**8**

BECK'S *Idaho* 633D

PMC707607      BECK 633D      JANUARY 28, 2016      POLLED

WINN MANS LANZA 610S  
**SPARROWS KINGSTON 139Y**  
 SPARROWS DELIGHT 374P

SPARROWS ELDORADO 361L  
**BECK'S SHANIA 9A**  
 BECK'S SHANIA 36Y

SPARROWS DURANGO 585P  
 WINN MAN MERIT 036K  
 SPARROWS MATADOR 7K  
 SPARROWS DELIGHT 74L  
 SPARROWS ALLIANCE 513G  
 SPARROWS HEARTBREAK 261J  
 SPARROWS PANAMA 826U  
 BECK'S SHANIA 42S

CE	BW	ADJ 205DW	365 DW	BW	WW	YW	MILK
UA	100	809	1313	1.4	47	96	22



Lot 8

**9**

BECK'S *Chrome* 644D

PMC709688      BECK 644D      FEBRUARY 3, 2016      POLLED

WINN MANS LANZA 610S  
**SPARROWS KINGSTON 139Y**  
 SPARROWS DELIGHT 374P

\$\$ MONTANA SILVER  
**BECK'S TASSEL 4R**  
 CHARDEL TASSEL 333N

SPARROWS DURANGO 585P  
 WINN MAN MERIT 036K  
 SPARROWS MATADOR 7K  
 SPARROWS DELIGHT 74L  
 \$ CECILE COBB  
 \$ STAGE'S MISS DC BAR  
 SPARROWS ALLIANCE 513G  
 CHARDEL TASSEL 650F

CE	BW	ADJ 205DW	365 DW	BW	WW	YW	MILK
UA	92	797	1323	-1.8	43	86	26



Maternal Sister to 644D

*Champion Charolais Female at the Young Ranchmans, Regina and Yorkton Spring Shows*

Beck Charolais Yearlings...



Lot 11



Lot 12

Can't make the sale... Watch and Bid Online

Internet Bidding Available

D | L | M | S  
www.dlms.ca

10

BECK'S *Tampa* 621D

PMC707603 BECK 621D JANUARY 22, 2016 POLLED

WINN MANS LANZA 610S  
**SPARROWS KINGSTON 139Y**  
SPARROWS DELIGHT 374P

SPARROWS PANAMA 826U  
**BECK'S HEARTBREAK 32Z**  
BECK'S HEARTBREAK 61R

SPARROWS DURANGO 585P  
WINN MAN MERIT 036K  
SPARROWS MATADOR 7K  
SPARROWS DELIGHT 74L  
LOPEZ  
SPARROWS DAISY MAY 67P  
BECK'S LINK 23J  
BECK'S HEARTBREAK 43M

CE	BW	ADJ 205DW	365 DW	BW	WW	YW	MILK
UA	101	726	1245	2.7	39	89	24

11

BECK'S *Wyoming* 628D

PMC707618 BECK 628D JANUARY 25, 2016 POLLED

WINN MANS LANZA 610S  
**SPARROWS KINGSTON 139Y**  
SPARROWS DELIGHT 374P

SPARROWS ELDORADO 361L  
**BECK'S PINECONE 15A**  
BECK'S PINECONE 22Y

SPARROWS DURANGO 585P  
WINN MAN MERIT 036K  
SPARROWS MATADOR 7K  
SPARROWS DELIGHT 74L  
SPARROWS ALLIANCE 513G  
SPARROWS HEARTBREAK 261J  
CURTIS WALLACE 141H  
CHARDEL PINECONE 347N

CE	BW	ADJ 205DW	365 DW	BW	WW	YW	MILK
UA	93	731	1247	-0.1	42	86	23

12

BECK'S *Code* 601D

PMC707630 BECK 601D JANUARY 4, 2016 POLLED

WINN MANS LANZA 610S  
**SPARROWS KINGSTON 139Y**  
SPARROWS DELIGHT 374P

SPARROWS PANAMA 826U  
**BECK'S MIST 49B**  
BECK'S MIST 29T

SPARROWS DURANGO 585P  
WINN MAN MERIT 036K  
SPARROWS MATADOR 7K  
SPARROWS DELIGHT 74L  
LOPEZ  
SPARROWS DAISY MAY 67P  
SPARROWS ALCATRAZ 18N  
CHARDEL MIST 940J

CE	BW	ADJ 205DW	365 DW	BW	WW	YW	MILK
UA	70	700	1258	-1.9	33	75	26

13

BECK'S *Nevada* 630D

PMC707568 BECK 630D JANUARY 27, 2016 POLLED

WINN MANS LANZA 610S  
**SPARROWS KINGSTON 139Y**  
SPARROWS DELIGHT 374P

WINN MANS THE GAME 102L  
**BECK'S JEZZY 81R**  
BECK'S JEZZY 10L

SPARROWS DURANGO 585P  
WINN MAN MERIT 036K  
SPARROWS MATADOR 7K  
SPARROWS DELIGHT 74L  
SPARROWS ADVANTAGE 230H  
BKJ FETISH PLD 928J  
SPARROWS ALLIANCE 513G  
BECK'S OMEGA 19J

CE	BW	ADJ 205DW	365 DW	BW	WW	YW	MILK
UA	105	708	1210	1.2	40	81	19



Beck Charolais Yearlings...

14

BECK'S *Reign* 640D

PMC707599 BECK 640D FEBRUARY 1, 2016 POLLED

WINN MANS LANZA 610S  
**SPARROWS KINGSTON 139Y**  
 SPARROWS DELIGHT 374P

SPARROWS PANAMA 826U  
**BECK'S DISCO 23Z**  
 BECK'S DISCO 12T

SPARROWS DURANGO 585P  
 WINN MAN MERIT 036K  
 SPARROWS MATADOR 7K  
 SPARROWS DELIGHT 74L  
 LOPEZ  
 SPARROWS DAISY MAY 67P  
 BECK'S TOKO 33R  
 BECK'S DISCO 46P

CE	BW	ADJ 205DW	365 DW	BW	WW	YW	MILK
UA	90	707	1284	0.4	39	87	23



Lot 14

15

BECK'S *Princeton* 659D

PMC707594 BECK 659D FEBRUARY 12, 2016 POLLED

WINN MANS LANZA 610S  
**SPARROWS KINGSTON 139Y**  
 SPARROWS DELIGHT 374P

SPARROWS PANAMA 826U  
**BECK'S KEILI 35Y**  
 BECK'S KEILI 19S

SPARROWS DURANGO 585P  
 WINN MAN MERIT 036K  
 SPARROWS MATADOR 7K  
 SPARROWS DELIGHT 74L  
 LOPEZ  
 SPARROWS DAISY MAY 67P  
 WINN MANS THE GAME 102L  
 BECK'S KEILI 9L

CE	BW	ADJ 205DW	365 DW	BW	WW	YW	MILK
UA	105	691	1186	4.0	43	93	17



Lot 15

16

BECK'S *Monarch* 636D

PMC707587 BECK 636D JANUARY 29, 2016 POLLED

WINN MANS LANZA 610S  
**SPARROWS KINGSTON 139Y**  
 SPARROWS DELIGHT 374P

SPARROWS ELDORADO 361L  
**BECK'S HEARTBREAK 3Y**  
 BECK'S HEARTBREAK 61W

SPARROWS DURANGO 585P  
 WINN MAN MERIT 036K  
 SPARROWS MATADOR 7K  
 SPARROWS DELIGHT 74L  
 SPARROWS ALLIANCE 513G  
 SPARROWS HEARTBREAK 261J  
 BECK'S RICKY BOBBY 10S  
 BECK'S HEARTBREAK 61R

CE	BW	ADJ 205DW	365 DW	BW	WW	YW	MILK
MP	86	693	1163	0.4	42	87	22



Lot 16

Beck Charolais Yearlings...

17

BECK'S *Casper* 661D

PMC707616 BECK 661D FEBRUARY 13, 2016 POLLED

WINN MANS LANZA 610S  
**SPARROWS KINGSTON 139Y**  
 SPARROWS DELIGHT 374P

CJC UNUSUAL Y798P  
**BECK'S DANCER 54A**  
 BECK'S DANCER 83X

SPARROWS DURANGO 585P  
 WINN MAN MERIT 036K  
 SPARROWS MATADOR 7K  
 SPARROWS DELIGHT 74L  
 LHD DISTINCTIVE T760 P  
 CJC MS ICE R2094  
 SPARROWS AUTHENTIC 6S  
 STAUFFERS MS. DANCER 83N

CE	BW	ADJ 205DW	365 DW	BW	WW	YW	MILK
UA	105	773	1306	1.8	39	80	26

18

BECK'S *Artic* 657D

PMC707574 BECK 657D FEBRUARY 3, 2016 POLLED

WINN MANS LANZA 610S  
**SPARROWS KINGSTON 139Y**  
 SPARROWS DELIGHT 374P

SPARROWS ALCATRAZ 18N  
**BECK'S STARLIGHT 41T**  
 BECK'S STARLIGHT 16K

SPARROWS DURANGO 585P  
 WINN MAN MERIT 036K  
 SPARROWS MATADOR 7K  
 SPARROWS DELIGHT 74L  
 SPARROWS MATADOR 7K  
 SPARROWS BARMAID 218H  
 SHARPHILLS HURRICANE154D  
 BECK'S STARLIGHT 15F

CE	BW	ADJ 205DW	365 DW	BW	WW	YW	MILK
UA	102	721	1154	0.6	31	67	32



Lot 19

19

BECK'S *Domain* 669D

PMC707608 BECK 669D FEBRUARY 19, 2016 POLLED

WINN MANS LANZA 610S  
**SPARROWS KINGSTON 139Y**  
 SPARROWS DELIGHT 374P

SPARROWS ELDORADO 361L  
**BECK'S TIANNA 10A**  
 BECK'S TIANNA 7Y

SPARROWS DURANGO 585P  
 WINN MAN MERIT 036K  
 SPARROWS MATADOR 7K  
 SPARROWS DELIGHT 74L  
 SPARROWS ALLIANCE 513G  
 SPARROWS HEARTBREAK 261J  
 SPARROWS PANAMA 826U  
 BECK'S TIANNA 7U

CE	BW	ADJ 205DW	365 DW	BW	WW	YW	MILK
UA	103	739	1227	2.6	45	96	20



Grand Champion Commercial Female - Olds, 2016

# BECK FARMS

In 2014 we found Orch at Stepler Farms bull sale in Manitoba. We fell in love with his mass, power, hair and incredible disposition. His sons are a lot like their sire. Very consistent in their type with lots of power and growth. As Orch's daughters come into production this spring, it is evident his influence will be felt in our program for years to come.

**9 yearling sons and 2 two year olds sell.**



Orch

## Ref Sire

STEPPLER *Orch* 103A

PMC351705

DSY 103A

JANUARY 19, 2013

POLLED

BW	WW	YW	MILK	TM
6.0	37	96	25	43

## 20

BECK'S *Flame* 626D

PMC707589

BECK 626D

JANUARY 23, 2016

POLLED

SPARROWS SEMINOLE 927W  
**STEPPLER ORCH 103A**  
STEPPLER MISS 253U

ABC LATORO 263G  
SPARROWS ANGEL EYES 258N  
SPARROWS BERLIN 30M  
STEPPLER MISS 23K  
LOPEZ  
SPARROWS DAISY MAY 67P  
WINN MANS THE GAME 102L  
BECK'S TIANNA 7K

SPARROWS PANAMA 826U  
**BECK'S TIANNA 13Y**  
BECK'S TIANNA 30R

CE	BW	ADJ 205DW	365 DW	BW	WW	YW	MILK
UA	104	727	1322	5.2	39	92	15



Lot 20

## 21

BECK'S *Scorch* 683D

PMC707612

BECK 683D

MARCH 3, 2016

POLLED

SPARROWS SEMINOLE 927W  
**STEPPLER ORCH 103A PMC351705**  
STEPPLER MISS 253U

ABC LATORO 263G  
SPARROWS ANGEL EYES 258N  
SPARROWS BERLIN 30M  
STEPPLER MISS 23K  
WINN MANS LANZA 610S  
SPARROWS ALLISION 133W  
WINN MANS THE GAME 102L  
BECK'S TIANNA 7K

SPARROWS HOMBRE 128Y  
**BECK'S TIANNA 30A**  
BECK'S TIANNA 7U

CE	BW	ADJ 205DW	365 DW	BW	WW	YW	MILK
UA	94	781	1285	1.4	42	92	23



Lot 21

Beck Charolais Yearlings...



Lot 22

22

BECK'S *Optimus* 654D

PMC707602 BECK 654D FEBRUARY 9, 2016 POLLED

SPARROWS SEMINOLE 927W  
**STEPLER ORCH 103A**  
 STEPLER MISS 253U

SPARROWS PANAMA 826U  
**BECK'S DISCO 20Z**  
 BECK'S DISCO 69P

ABC LATORO 263G  
 SPARROWS ANGEL EYES 258N  
 SPARROWS BERLIN 30M  
 STEPLER MISS 23K  
 LOPEZ  
 SPARROWS DAISY MAY 67P  
 WINN MANS THE GAME 102L  
 BECK'S SHINE 51M

CE	BW	ADJ 205DW	365 DW	BW	WW	YW	MILK
UA	108	710	1251	7.0	42	98	16



Lot 23

23

BECK'S *Marble* 641D

MC707582 BECK 641D FEBRUARY 1, 2016 HORNED

SPARROWS SEMINOLE 927W  
**STEPLER ORCH 103A**  
 STEPLER MISS 253U

SPARROWS PANAMA 826U  
**BECK'S INTRIGUE 102X**  
 BECK'S INTRIGUE 2S

ABC LATORO 263G  
 SPARROWS ANGEL EYES 258N  
 SPARROWS BERLIN 30M  
 STEPLER MISS 23K  
 LOPEZ  
 SPARROWS DAISY MAY 67P  
 SPARROWS ALCATRAZ 18N  
 BECK'S INTRIGUE 36P

CE	BW	ADJ 205DW	365 DW	BW	WW	YW	MILK
UA	105	782	1313	5.5	44	99	18



Lot 25

25

BECK'S *Frozone* 681D

PMC707598 BECK 681D FEBRUARY 28, 2016 POLLED

SPARROWS SEMINOLE 927W  
**STEPLER ORCH 103A**  
 STEPLER MISS 253U

SPARROWS ELDORADO 361L  
**BECK'S TEQUILA 22Z**  
 BECK'S TEQUILA 1132X

ABC LATORO 263G  
 SPARROWS ANGEL EYES 258N  
 SPARROWS BERLIN 30M  
 STEPLER MISS 23K  
 SPARROWS ALLIANCE 513G  
 SPARROWS HEARTBREAK 261J  
 BECK'S RICKY BOBBY 10S  
 BECK'S TEQUILA 32M

CE	BW	ADJ 205DW	365 DW	BW	WW	YW	MILK
UA	96	705	1232	1.5	35	79	18

Beck Charolais Yearlings & Two Year Olds...

26

BECK'S *Rust* 616D

MC707583 BECK 616D JANUARY 17, 2016 HORNED

SPARROWS SEMINOLE 927W  
**STEPPLER ORCH 103A**  
STEPPLER MISS 253U

BECK'S RICKY BOBBY 10S  
**BECK'S RED KEY 137X**  
BECK'S MISS RED KEY 37N

ABC LATORO 263G  
SPARROWS ANGEL EYES 258N  
SPARROWS BERLIN 30M  
STEPPLER MISS 23K  
SPARROWS ALCATRAZ 18N  
BECK'S SASSY 11H  
SPARROWS VALLEJO 14J  
KEYD MISS RED KEY 14C

CE	BW	ADJ 205DW	365 DW	BW	WW	YW	MILK
UA	99	728	1311	2.6	33	81	24

27

BECK'S *Dab* 650D

MC717747 BECK 650D FEBRUARY 7, 2016 HORNED

SPARROWS SEMINOLE 927W  
**STEPPLER ORCH 103A**  
STEPPLER MISS 253U

SPARROWS PANAMA 826U  
**BECK'S STARLIGHT 29Z**  
BECK'S STARLIGHT 41T

ABC LATORO 263G  
SPARROWS ANGEL EYES 258N  
SPARROWS BERLIN 30M  
STEPPLER MISS 23K  
LOPEZ  
SPARROWS DAISY MAY 67P  
SPARROWS ALCATRAZ 18N  
BECK'S STARLIGHT 16K

CE	BW	ADJ 205DW	365 DW	BW	WW	YW	MILK
UA	84	759	1323	4.0	37	87	22

28

BECK'S *Dominion* 668D

PMC707604 BECK 668D FEBRUARY 19, 2016 POLLED

SPARROWS SEMINOLE 927W  
**STEPPLER ORCH 103A**  
STEPPLER MISS 253U

SPARROWS PANAMA 826U  
**BECK'S STARLIGHT 41Z**  
BECK'S STARLIGHT 32U

ABC LATORO 263G  
SPARROWS ANGEL EYES 258N  
SPARROWS BERLIN 30M  
STEPPLER MISS 23K  
LOPEZ  
SPARROWS DAISY MAY 67P  
SPARROWS AUTHENTIC 6S  
BECK'S STARLIGHT 32R

CE	BW	ADJ 205DW	365 DW	BW	WW	YW	MILK
UA	108	793	1326	7.3	45	100	18



Lot 28

two year old

29

BECK'S *Star* 565C

PMC696410 BECK 565C MARCH 16, 2015 POLLED

SPARROWS SEMINOLE 927W  
**STEPPLER ORCH 103A**  
STEPPLER MISS 253U

SPARROWS AUTHENTIC 6S  
**BECK'S STARLIGHT 212W**  
BECK'S STARLIGHT 12R

ABC LATORO 263G  
SPARROWS ANGEL EYES 258N  
SPARROWS BERLIN 30M  
STEPPLER MISS 23K  
ABC LATORO 263G  
PRAIRIEWIND LADY 6J  
WINN MANS THE GAME 102L  
BECK'S STARLIGHT 10N

CE	BW	ADJ 205DW	365 DW	BW	WW	YW	MILK
MP	106	678	N/A	5.4	41	87	21

two year old

30

BECK'S *Dance* 564C

PMC696300 BECK 564C MARCH 13, 2015 POLLED

SPARROWS SEMINOLE 927W  
**STEPPLER ORCH 103A**  
STEPPLER MISS 253U

SPARROWS COSSACK 11L  
**STAUFFERS MS. DANCER 83N**  
SFL 89A MISS DANCER 17D

ABC LATORO 263G  
SPARROWS ANGEL EYES 258N  
SPARROWS BERLIN 30M  
STEPPLER MISS 23K  
SPARROWS ALLIANCE 513G  
HVR DANA 11D  
SODERGLEN SUNDOWNER 89A  
LCC MISS LANCER 48X

CE	BW	ADJ 205DW	365 DW	BW	WW	YW	MILK
UA	97	671	N/A	3.2	33	74	20

# BECK FARMS

Bounty is a home raised Eldorado son that we sold to JF Cardin from Quebec. Bounty has been used predominantly on heifers. They calve extremely easy and are easy doing and stout made. The two bull we displayed in 'The Yards' at Agribition were both Bounty sons.

**4 yearling bulls sell.**



**Bounty**

## Ref Sire

BECK'S *Bounty* 206Z

PMC347500 BECK 206Z JANUARY 14, 2012 POLLED

BW	WW	YW	MILK	TM
-3.1	46	76	12	35



**Lot 31**

## 31

BECK'S *Omaha* 620D

PMC707570 BECK 620D JANUARY 21, 2016 POLLED

SPARROWS ELDORADO 361L  
**BECK'S BOUNTY 206Z**  
 BECK'S DANCER 83X

WINN MANS THE GAME 102L  
**BECK'S FLAIR 49S**  
 CHARDEL FLAIR 343N

SPARROWS ALLIANCE 513G  
 SPARROWS HEARTBREAK 261J  
 SPARROWS AUTHENTIC 6S  
 STAUFFERS MS. DANCER 83N  
 SPARROWS ADVANTAGE 230H  
 BKJ FETISH PLD 928J  
 SPARROWS ALLIANCE 513G  
 CHARDEL FLAIR 34K

CE	BW	ADJ 205DW	365 DW	BW	WW	YW	MILK
UA	102	819	1395	0.8	51	87	9



**Lot 32**

## 32

BECK'S *Citation* 615D

PMC707627 BECK 615D JANUARY 16, 2016 POLLED

SPARROWS ELDORADO 361L  
**BECK'S BOUNTY 206Z**  
 BECK'S DANCER 83X

SPARROWS HOMBRE 128Y  
**BECK'S GOLDEN GIRL 33B**  
 BECK'S GOLDEN 9Z

SPARROWS ALLIANCE 513G  
 SPARROWS HEARTBREAK 261J  
 SPARROWS AUTHENTIC 6S  
 STAUFFERS MS. DANCER 83N  
 WINN MANS LANZA 610S  
 SPARROWS ALLISION 133W  
 SPARROWS ALCATRAZ 18N  
 BECK'S GOLDEN GIRL 136X

CE	BW	ADJ 205DW	365 DW	BW	WW	YW	MILK
UA	78	781	1357	-2.8	45	79	18

Beck Charolais Yearlings...

33

BECK'S *Gorge* 608D

PMC707622 BECK 608D JANUARY 10, 2016 POLLED

SPARROWS ELDORADO 361L  
**BECK'S BOUNTY 206Z**  
 BECK'S DANCER 83X

SPARROWS ALLIANCE 513G  
 SPARROWS HEARTBREAK 261J  
 SPARROWS AUTHENTIC 6S  
 STAUFFERS MS. DANCER 83N  
 WINN MANS LANZA 610S  
 SPARROWS ALLISION 133W  
 SPARROWS PANAMA 826U  
 BECK'S KARMA 12L

SPARROWS HOMBRE 128Y  
**BECK'S KARMA 23B**  
 BECK'S KARMA 25Z

CE	BW	ADJ 205DW	365 DW	BW	WW	YW	MILK
UA	75	766	1324	-3.3	43	79	16



Lot 33

34

BECK'S *Atlanta* 611D

PMC707624 BECK 611D JANUARY 12, 2016 POLLED

SPARROWS ELDORADO 361L  
**BECK'S BOUNTY 206Z**  
 BECK'S DANCER 83X

SPARROWS ALLIANCE 513G  
 SPARROWS HEARTBREAK 261J  
 SPARROWS AUTHENTIC 6S  
 STAUFFERS MS. DANCER 83N  
 WINN MANS LANZA 610S  
 SPARROWS ALLISION 133W  
 BECK'S CAST 045X  
 BECK'S EVA 196W

SPARROWS HOMBRE 128Y  
**BECK'S EVA 27B**  
 BECK'S EVA 49Z

CE	BW	ADJ 205DW	365 DW	BW	WW	YW	MILK
MP	76	738	1257	-3.5	40	74	18



Lot 34

**BECK  
FARMS**

Hombre has been our calving ease sire for years. His calves our stylish with lots of hair. His daughters came into production last year and we are extremely happy with how they are turning out.

**4 yearling sons and 1 two year old son sell.**



Hombre

**Ref Sire**

SPARROWS *Hombre* 128Y

PMC341144 SB 128Y JANUARY 30, 2011 POLLED

BW	WW	YW	MILK	TM
-1.0	49	97	27	51

Beck Charolais Yearlings & Two Year Old...



Lot 35

35

BECK'S *Montana* 642D

MC707625 BECK 642D JANUARY 31, 2016 HORNED

WINN MANS LANZA 610S  
**SPARROWS HOMBRE 128Y**  
 SPARROWS ALLISION 133W

SM ANCHOR Y124 P  
**BECK'S FLAIR 29B**  
 BECK'S FLAIR 50Y

SPARROWS DURANGO 585P  
 WINN MAN MERIT 036K  
 SPARROWS ALCATRAZ 18N  
 SPARROWS ALLUSION 133T  
 BHD ROCK U827  
 SM SID'S CIGAR T70 P ET  
 BECK'S RICKY BOBBY 10S  
 BECK'S FLAIR 49S

CE	BW	ADJ 205DW	365 DW	BW	WW	YW	MILK
UA	90	783	1241	1.2	46	89	21



Lot 36

36

BECK'S *Florida* 613D

PMC707631 BECK 613D JANUARY 15, 2016 POLLED

WINN MANS LANZA 610S  
**SPARROWS HOMBRE 128Y**  
 SPARROWS ALLISION 133W

BECK'S TITAN 818U  
**BECK'S DANCER 60B**  
 BECK'S MS. DANCER 15R

SPARROWS DURANGO 585P  
 WINN MAN MERIT 036K  
 SPARROWS ALCATRAZ 18N  
 SPARROWS ALLUSION 133T  
 SPARROWS AUTHENTIC 6S  
 BECK'S MARIE 29R  
 SVY FREEDOM PLD 307N  
 STAUFFERS MS. DANCER 83N

CE	BW	ADJ 205DW	365 DW	BW	WW	YW	MILK
SA	92	808	1352	0.6	43	80	25

37

BECK'S *Denver* 675D

PMC707573 BECK 675D FEBRUARY 23, 2016 POLLED

WINN MANS LANZA 610S  
**SPARROWS HOMBRE 128Y**  
 SPARROWS ALLISION 133W

SPARROWS ALLIANCE 513G  
**MERIT MAUDE 6287S**  
 MERIT MAUDE 4036P

SPARROWS DURANGO 585P  
 WINN MAN MERIT 036K  
 SPARROWS ALCATRAZ 18N  
 SPARROWS ALLUSION 133T  
 LT WYOMING WIND 4020 PLD  
 CHARDEL PARADISE 513E  
 SBPC BIG MAC 12Z  
 MERIT MAUDE 2070M

CE	BW	ADJ 205DW	365 DW	BW	WW	YW	MILK
UA	105	800	1288	0.8	51	93	20

38

BECK'S *Ranger* 672D

PMC707581 BECK 672D FEBRUARY 22, 2016 POLLED

WINN MANS LANZA 610S  
**SPARROWS HOMBRE 128Y**  
 SPARROWS ALLISION 133W

SPARROWS AUTHENTIC 6S  
**BECK'S JAZZ 136W**  
 BECK'S JAZZ 36S

SPARROWS DURANGO 585P  
 WINN MAN MERIT 036K  
 SPARROWS ALCATRAZ 18N  
 SPARROWS ALLUSION 133T  
 ABC LATORO 263G  
 PRAIRIEWIND LADY 6J  
 SPARROWS ALLIANCE 513G  
 BECK'S JAZZ 54P

CE	BW	ADJ 205DW	365 DW	BW	WW	YW	MILK
UA	95	786	1200	-0.2	46	84	25

two year old

39

BECK'S *Torn* 575C

PMC697299 BECK 575C APRIL 12, 2015 POLLED

WINN MANS LANZA 610S  
**SPARROWS HOMBRE 128Y**  
 SPARROWS ALLISION 133W

SPARROWS EL DORADO 361L  
**BECK'S SAGE 1Y**  
 BECK'S LADY SAGE 20W

SPARROWS DURANGO 585P  
 WINN MAN MERIT 036K  
 SPARROWS ALCATRAZ 18N  
 SPARROWS ALLUSION 133T  
 SPARROWS ALLIANCE 513G  
 SPARROWS HEARTBREAK 261J  
 LT EASY BLEND 5125 PLD  
 BECK'S LADY SAGE 20T

CE	BW	ADJ 205DW	365 DW	PE BW	WW	YW	MILK
UA	91	708	N/A	-0.9	48	93	21



# BECK FARMS

Ref Sire

SPARROWS *Panama* 826U

PMC321284

BECK 826U

FEBRUARY 6, 2008

POLLED



Panama

BW	WW	YW	MILK	TM
7.9	52	118	8	34

Panama daughters form the base of our program. His sons have anchored our bull sale for years as stout made performance bulls. Many of the top bulls in the sale this year are influenced by Panama.

**3 yearling sons sell.**

40

BECK'S *Alabama* 655D

PMC707580

BECK 655D

FEBRUARY 11, 2016

POLLED

LOPEZ  
SPARROWS PANAMA 826U  
SPARROWS DAISY MAY 67P

SPARROWS ALCATRAZ 18N  
BECK'S TASSEL 25W  
BECK'S TASSEL 25T

CIEL  
HACIENDA  
SPARROWS COSSACK 11L  
SPARROWS DAISY MAY 67H  
SPARROWS MATADOR 7K  
SPARROWS BARMAID 218H  
BECK'S REVIVAL 5F  
BECK'S TASSEL 4R

CE	BW	ADJ 205DW	365 DW	BW	WW	YW	MILK
UA	110	821	1381	4.2	48	98	16



Lot 40

41

BECK'S *Panhandle* 622D

PMC707585

BECK 622D

JANUARY 22, 2016

POLLED

LOPEZ  
SPARROWS PANAMA 826U  
SPARROWS DAISY MAY 67P

BECK'S RICKY BOBBY 10S  
BECK'S SHANIA 335X  
BECK'S SHANIA 35R

CIEL  
HACIENDA  
SPARROWS COSSACK 11L  
SPARROWS DAISY MAY 67H  
SPARROWS ALCATRAZ 18N  
BECK'S SASSY 11H  
WINN MANS THE GAME 102L  
BECK'S SHANIA 12N

CE	BW	ADJ 205DW	365 DW	BW	WW	YW	MILK
UA	104	748	1298	4.6	44	95	11



Lot 41

42

BECK'S *Colorado* 639D

PMC707606

BECK 639D

FEBRUARY 1, 2016

POLLED

LOPEZ  
SPARROWS PANAMA 826U  
SPARROWS DAISY MAY 67P

SPARROWS ELDORADO 361L  
BECK'S SAGE 4A  
BECK'S SAGE 57Y

CIEL  
HACIENDA  
SPARROWS COSSACK 11L  
SPARROWS DAISY MAY 67H  
SPARROWS ALLIANCE 513G  
SPARROWS HEARTBREAK 261J  
ROLLIN ACRES WILL 12W  
BECK'S LADY SAGE 20T

CE	BW	ADJ 205DW	365 DW	BW	WW	YW	MILK
UA	90	750	1243	2.0	44	92	11

*Beck Charolais Yearlings...*



**Sundance**



**Blue Value**

**Ref Sire**

LT *Sundance* 2251 PLD

PMC358726      2251      MARCH 15, 2012      POLLED

BW	WW	YW	MILK	TM
1.3	65	109	15	47

**Ref Sire**

LT *Blue Value* 7903 ET

PMC359766      7903      MARCH 16, 2007      POLLED

BW	WW	YW	MILK	TM
-2.3	56	97	15	43

Blue Value and Sundance are two AI sires that originated from the famed Lindskov Thiel herd in South Dakota. Their sons are moderate birthweight, easy calving polled bulls with good performance. **3 yearling sons of each sell.**



**Lot 43**

**43**

BECK'S *Ridge* 602D

PMC707619      BECK 602D      JANUARY 6, 2016      POLLED

LT BLUEGRASS 4017 P  
**LT BLUE VALUE 7903 ET PMC359766**  
 LT UNLIMITED MAID 7184 PP

SPARROWS HOMBRE 128Y  
**BECK'S OMEGA 3B**  
 BECK'S OMEGA 3Z

LT ASSERTION 1277P  
 LT PEARL'S BREEZE 2236 P  
 LT UNLIMITED DUKE 1172 P  
 LT UNLIMITED LASS2156P  
 WINN MANS LANZA 610S  
 SPARROWS ALLISION 133W  
 SPARROWS ELDORADO 361L  
 BECK'S OMEGA 411X

CE	BW	ADJ 205DW	365 DW	BW	WW	YW	MILK
UA	75	793	1364	-3.8	51	91	18

**44**

BECK'S *Kansas* 614D

PMC707621      BECK 614D      JANUARY 14, 2016      POLLED

LT BLUEGRASS 4017 P  
**LT BLUE VALUE 7903 ET PMC359766**  
 LT UNLIMITED MAID 7184 PP

SPARROWS HOMBRE 128Y  
**BECK'S JEZZY 19B**  
 BECK'S JEZZY 7Z

LT ASSERTION 1277P  
 LT PEARL'S BREEZE 2236 P  
 LT UNLIMITED DUKE 1172 P  
 LT UNLIMITED LASS2156P  
 WINN MANS LANZA 610S  
 SPARROWS ALLISION 133W  
 SPARROWS ELDORADO 361L  
 BECK'S JEZZY 118X

CE	BW	ADJ 205DW	365 DW	BW	WW	YW	MILK
SA	96	814	1186	0.5	58	105	15

*Beck Charolais Yearlings...*

**45**

BECK'S *Titleist* 604D

PMC707628 BECK 604D JANUARY 7, 2016 POLLED

LT BLUEGRASS 4017 P  
**LT BLUE VALUE 7903 ET PMC359766**  
 LT UNLIMITED MAID 7184 PP

SPARROWS HOMBRE 128Y  
**BECK'S GOLDEN GIRL 39B**  
 BECK'S GOLDEN GIRL 13Z

LT ASSERTION 1277P  
 LT PEARL'S BREEZE 2236 P  
 LT UNLIMITED DUKE 1172 P  
 LT UNLIMITED LASS2156P  
 WINN MANS LANZA 610S  
 SPARROWS ALLISION 133W  
 SPARROWS PANAMA 826U  
 LAE GOLDEN GIRL 8136U

CE	BW	ADJ 205DW	365 DW	BW	WW	YW	MILK
UA	88	798	1306	-1.0	53	99	16



Lot 45

**46**

BECK'S *Reno* 617D

PMC707578 BECK 617D JANUARY 17, 2016 POLLED

LT LEDGER 0332 P  
**LT SUNDANCE 2251 PLD**  
 LT BALLETT 9219 POLLED

BECK'S RICKY BOBBY 10S  
**BECK'S TASSEL 333U**  
 CHARDEL TASSEL 333N

LT BLUEGRASS 4017 P  
 LT BRENDA 6120 PLD  
 LT EASY PRO 1158 PLD  
 LT BALLETT 6233  
 SPARROWS ALCATRAZ 18N  
 BECK'S SASSY 11H  
 SPARROWS ALLIANCE 513G  
 CHARDEL TASSEL 650F

CE	BW	ADJ 205DW	365 DW	BW	WW	YW	MILK
UA	98	766	1344	0.8	50	89	18



Lot 46

**47**

BECK'S *Devil* 666D

PMC707614 BECK 666D FEBRUARY 15, 2016 POLLED

LT LEDGER 0332 P  
**LT SUNDANCE 2251 PLD**  
 LT BALLETT 9219 POLLED

SPARROWS HOMBRE 128Y  
**BECK'S FANNY 39A**  
 BECK'S FANNY 9Y

LT BLUEGRASS 4017 P  
 LT BRENDA 6120 PLD  
 LT EASY PRO 1158 PLD  
 LT BALLETT 6233  
 WINN MANS LANZA 610S  
 SPARROWS ALLISION 133W  
 SPARROWS PANAMA 826U  
 WOOD RIVER FANNY 36M

CE	BW	ADJ 205DW	365 DW	BW	WW	YW	MILK
UA	103	812	1361	2.2	59	107	17

**48**

BECK'S *Salem* 651D

PMC707611 BECK 651D FEBRUARY 7, 2016 POLLED

LT LEDGER 0332 P  
**LT SUNDANCE 2251 PLD**  
 LT BALLETT 9219 POLLED

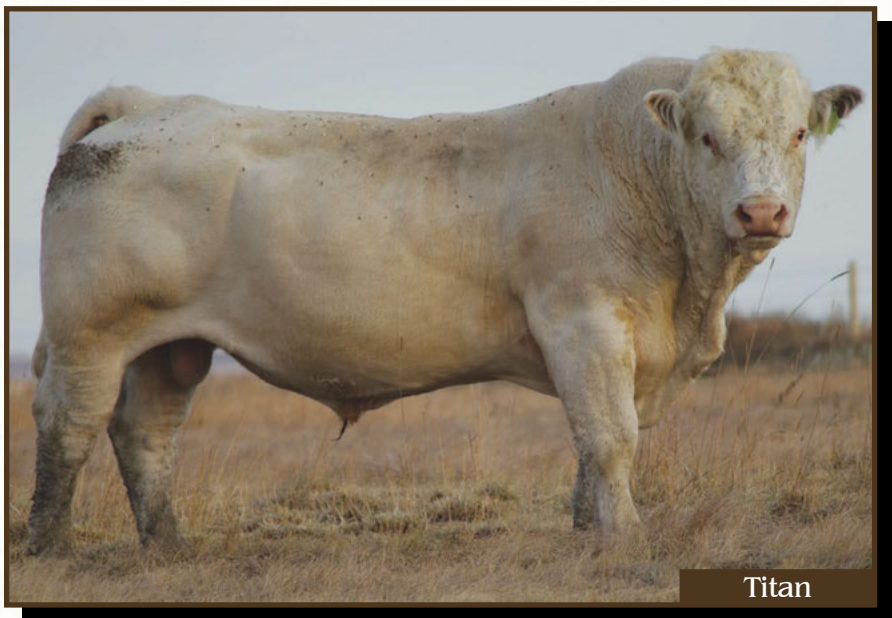
SPARROWS HOMBRE 128Y  
**BECK'S DISCO 22A**  
 BECK'S DISCO 135X

LT BLUEGRASS 4017 P  
 LT BRENDA 6120 PLD  
 LT EASY PRO 1158 PLD  
 LT BALLETT 6233  
 WINN MANS LANZA 610S  
 SPARROWS ALLISION 133W  
 SPARROWS PANAMA 826U  
 BECK'S DISCO 35S

CE	BW	ADJ 205DW	365 DW	BW	WW	YW	MILK
UA	103	716	1287	2.9	52	98	16

# BECK FARMS

Titan is a home raised horned bull that was originally kept to use on commercial cows. After seeing the results in our commercial herd the decision was made to use him cleanup on some purebred cows.  
**2 two year olds sell.**



Titan

## Ref Sire

BECK'S *Titan* 818U

MC320417      BECK 818U      FEBRUARY 10, 2008      HORNED

BW	WW	YW	MILK	TM
5.0	36	62	25	43

*two year old*

**49**

BECK'S *Warrior* 548C

MC367764      BECK 548C      FEBRUARY 20, 2015      HORNED

SPARROWS AUTHENTIC 6S  
**BECK'S TITAN 818U**  
BECK'S MARIE 29R

WINN MANS THE GAME 102L  
**BECK'S KAYLA 47R**  
BECK'S KAYLA 4M

ABC LATORO 263G  
PRAIRIEWIND LADY 6J  
WINN MANS THE GAME 102L  
JES MARIE 7M  
SPARROWS ADVANTAGE 230H  
BKJ FETISH PLD 928J  
BECK'S REVIVAL 5F  
BECK'S KAYLA 185K

CE	BW	ADJ 205DW	365 DW	BW	WW	YW	MILK
UA	107	742	N/A	3.7	43	76	17

*two year old*

**50**

BECK'S *Chill* 550C

PMC695719      BECK 550C      FEBRUARY 22, 2015      POLLED

SPARROWS AUTHENTIC 6S  
**BECK'S TITAN 818U**  
BECK'S MARIE 29R

SPARROWS PANAMA 826U  
**BECK'S SHANIA 42X**  
BECK'S SHANIA 42S

ABC LATORO 263G  
PRAIRIEWIND LADY 6J  
WINN MANS THE GAME 102L  
JES MARIE 7M  
LOPEZ  
SPARROWS DAISY MAY 67P  
SPARROWS ALCATRAZ 18N  
BECK'S SHANIA 12N

CE	BW	ADJ 205DW	365 DW	BW	WW	YW	MILK
UA	102	707	N/A	5.1	39	73	19

## Bull Development Plan

The toughest time in a bull's life is the year following the first breeding season. Special care needs to be given to these bulls to continue to grow and to develop as well as regain condition lost in the first year of breeding. Unfortunately, the vast majority of producers are not set up to deal with these young bull's needs. Beck Farms is offering to develop any yearling bulls it sells in 2017 for a nominal fee. We will pick up the bulls in the fall of 2017, winter them, semen test them before our 2018 sale and deliver them back to you in the spring. We will work with a qualified nutritionist to develop a high roughage TMR so these bulls develop properly and are returned to you in prime breeding condition for their second year of breeding in your program. If you have any questions about this program, you are welcome to call Wade at 306 436 7458.





## McCoy Cattle Co.

We are feeling very fortunate to have acquired Canadian semen rights in Anodyne in partnership with Crittenden Brothers and Lakes Ranch. Anodyne is a very unique breeding tool that has delivered more measurable financially important traits than any bull we have used. He is in the top 1% of the breed for both calving ease and yearling weight, and more importantly is breeding true to form thus far. His calves are born easily and have tremendous growth through yearling weights. He is also adding milk and carcass quality that is well above breed average. He is one of the top marbling bulls in the breed. Anodyne will see continued use in our program in 2017 via AI and use of his sons.



Anodyne

### Ref Sire

GERBER *Anodyne* 001A

PC03011538 GRBR 001A JANUARY 27, 2013 POLLED

CE	BW	WW	YW	MILK	TM	MCE	REA	MARB
7.3	-0.4	64.3	120.3	29.7	61.9	4.3	0.66	0.46

## 51

PC03021007 ZTM 91D MCCOY 001A *Maverick* 91D FEBRUARY 22, 2016 POLLED

KCF BENNETT 9126J R294 DLF IEF HYF  
**GERBER ANODYNE 001A**  
 GERBER 627S HOLLY 096Y

TH 122 711 VICTOR 719T DLF IEF HYF  
**MCCOY 719T TRISHA 16Z** DLF IEF HYF  
 MCCOY R117 TRISHA 14X

CL 1 DOMINO 9126J 1ET  
 KCF MISS 3008 N344 DLF IEF HYF  
 GERBER SQUIRE 627S  
 GERBER 116K HOLLY T115  
 DRF JWR PRINCE VICTOR 711  
 KBCR 19D DOMINETTE 122 DLF IEF  
 SHF RIB EYE M326 R117 DLF IEF HYF  
 MCCOY 58G TRISHA 8U DLF IEF HYF

BW	CE	ADJ 205DW	ADJ 365 DW	CE	BW	WW	YW	MILK	TM	REA	MARB
98	U	781	1347	6.6	1.9	66.4	113.9	29.7	62.9	0.56	0.23

Not sure where to start when describing 91D. He combines most of the qualities we are striving for in one individual; big performance in a moderate package, combined with very strong maternal values and above average carcass value. Member of our Agribition Champion Pen.



Lot 51

## 52

PC03020611 ZTM 8D MCCOY 001A *Glacier* 8D JANUARY 26, 2016 POLLED

KCF BENNETT 9126J R294 DLF IEF HYF  
**GERBER ANODYNE 001A**  
 GERBER 627S HOLLY 096Y

TH 122 711 VICTOR 719T DLF IEF HYF  
**MCCOY 719T SUSIE ET 418B** DLF IEF HYF  
 MCCOY 58G SUSIE 33K

CL 1 DOMINO 9126J 1ET  
 KCF MISS 3008 N344 DLF IEF HYF  
 GERBER SQUIRE 627S  
 GERBER 116K HOLLY T115  
 DRF JWR PRINCE VICTOR 711  
 KBCR 19D DOMINETTE 122 DLF IEF  
 RU 20X GALAXY 58G  
 MCCOY 994D TESSA 66G

BW	CE	ADJ 205DW	ADJ 365 DW	CE	BW	WW	YW	MILK	TM	REA	MARB
76	U	779	1295	6.9	-0.1	64.3	110.3	28.9	61.1	0.62	0.23

Don't miss this herd bull opportunity on sale day. 8D has a bit more growth, frame, and scale than some of our cattle. His first calf dam is truly at our front end. His grand dam, 33K, was the poster female for our operation for years and ranked near the top of the CHA Maternal Productivity Index list for years. Likely the best birth to yearling spread we have produced. He is a negative birth weight bull with a YW EPD of 110.

**Recommended for heifers.**



Lot 52



Lot 53

53

MCCOY 001A *Panorama* ET 33D DLF IEF HYF

PC03023768

ZTM 33D

FEBRUARY 6, 2016

SCURRED

KCF BENNETT 9126J R294 DLF IEF HYF  
**GERBER ANODYNE 001A**  
 GERBER 627S HOLLY 096Y

TH 122 71I VICTOR 719T DLF IEF HYF

**MCCOY 719T TRISHA 16Z** DLF IEF HYF  
 MCCOY R117 TRISHA 14X

CL 1 DOMINO 9126J 1ET  
 KCF MISS 3008 N344 DLF IEF HYF  
 GERBER SQUIRE 627S  
 GERBER 116K HOLLY T115  
 DRF JWR PRINCE VICTOR 71I  
 KBCR 19D DOMINETTE 122 DLF IEF  
 SHF RIB EYE M326 R117 DLF IEF HYF  
 MCCOY 58G TRISHA 8U DLF IEF HYF

BW	CE	ADJ 205DW	ADJ 365 DW	CE	BW	WW	YW	MILK	TM	REA	MARB
84	U	535	1031	8.4	0.3	53.7	96.2	32.1	59.0	0.47	0.20

33D is a solid Anodyne son that resulted from flushing our Trisha 16Z donor dam. His full brother is Lot 51 and a flush brother is being retained by MCC. His recipient dam was not one of our best but he has made up for it over the first 90 days post weaning with an ADG in the top 20% of the pen. **Recommended for heifers.**



Lot 54

54

MCCOY 001A *Marshal* 13D

PC03023009

ZTM 13D

JANUARY 28, 2016

SCURRED

KCF BENNETT 9126J R294 DLF IEF HYF  
**GERBER ANODYNE 001A**  
 GERBER 627S HOLLY 096Y

MCCOY 719T CONQUEST ET 628Z DLF IEF HYF

**MCCOY 628Z ZENA 121B**  
 MCCOY 23U ZENA 198Z

CL 1 DOMINO 9126J 1ET  
 KCF MISS 3008 N344 DLF IEF HYF  
 GERBER SQUIRE 627S  
 GERBER 116K HOLLY T115  
 TH 122 71I VICTOR 719T DLF IEF HYF  
 MCCOY 36A SUSIE 75F DLF IEF HYF  
 BBSF 68R ULTIMATE 23U DLF IEF HYF  
 DOUBLE-U MISS INVESTOR 11S

BW	CE	ADJ 205DW	ADJ 365 DW	CE	BW	WW	YW	MILK	TM	REA	MARB
87	A	625	1100	4.8	1.7	54.1	97.7	22.3	49.4	0.41	0.08

Here is a loose made, easy feeding, rugged Anodyne son that continues to impress since the day he was weaned. His dam carries that the extra udder quality that is so typical of the Conquest daughters.



Lot 55

55

MCCOY 001A *Magnet* 19D

PC03020994

ZTM 19D

TWIN

FEBRUARY 1, 2016

POLLED

KCF BENNETT 9126J R294 DLF IEF HYF  
**GERBER ANODYNE 001A**  
 GERBER 627S HOLLY 096Y

GOLDEN-OAK 4J MAXIUM 28M

**OSF SEALED WITHA KISS 28M 108S**  
 OSF POSSESSION 4L 118P

CL 1 DOMINO 9126J 1ET  
 KCF MISS 3008 N344 DLF IEF HYF  
 GERBER SQUIRE 627S  
 GERBER 116K HOLLY T115  
 EAGLE-RIDGE BLASTER ET 4J  
 TA-BAR CHANTELLE 15K  
 FCC 60G MADDUX 4L  
 OSF THIS KISS 42H 226K

BW	CE	ADJ 205DW	ADJ 365 DW	CE	BW	WW	YW	MILK	TM	REA	MARB
89	M	637	1152	1.8	4.0	61.6	110.5	20.7	51.5	0.58	0.18

19D has been found by several breeders as they have toured our operation over the past year. This Anodyne son puts it all together in a well-balanced, short marked, good haired package. His dam is one of our best uddered females. Her udder looks like it did as a two year old.

McCoy Hereford Yearlings...

56

MCCOY 001A *Jamboree* 22D

PC03023010 ZTM 22D FEBRUARY 3, 2016 SCURRED

KCF BENNETT 9126J R294 DLF IEF HYF  
**GERBER ANODYNE 001A**  
 GERBER 627S HOLLY 096Y

JDH 117R EQUITY 70Y ET DLF IEF HYF  
**MCCOY 70Y ZENA 220A**  
 MCCOY 47N ZENA 136T

CL 1 DOMINO 9126J 1ET  
 KCF MISS 3008 N344 DLF IEF HYF  
 GERBER SQUIRE 627S  
 GERBER 116K HOLLY T115  
 SHF RIB EYE M326 R117 DLF IEF HYF  
 JDH MS P606 BOOMER 20R  
 MCCOY 151L OPPORTUNITY 47N  
 MCCOY 58G ZENA 50K

BW	CE	ADJ 205DW	ADJ 365 DW	CE	BW	WW	YW	MILK	TM	REA	MARB
68	U	581	1066	6.6	-1.6	46.3	85.1	22.1	45.3	0.42	0.33

This Anodyne son will work well in the heifer pen and still leave some growth in his calves. Buy him with confidence. His great grand dam, 50K, was a long-lived, excellent producing cornerstone of our herd. **Recommended for heifers.**



Lot 56

57

MCCOY 001A *Pedigree* ET 34D DLF IEF HYF

PC03023767 ZTM 34D FEBRUARY 7, 2016 POLLED

KCF BENNETT 9126J R294 DLF IEF HYF  
**GERBER ANODYNE 001A**  
 GERBER 627S HOLLY 096Y

RU 20X GALAXY 58G  
**MCCOY 58G CONNIE 70Z** DLF IEF HYF  
 MCCOY 73R CONNIE 92W

CL 1 DOMINO 9126J 1ET  
 KCF MISS 3008 N344 DLF IEF HYF  
 GERBER SQUIRE 627S  
 GERBER 116K HOLLY T115  
 REMITALL KEYNOTE 20X  
 RU 10A ELM 57E  
 LAMPORT'S 87N PARAGON 73R  
 MCCOY 740C CONNIE 78J

BW	CE	ADJ 205DW	ADJ 365 DW	CE	BW	WW	YW	MILK	TM	REA	MARB
70	U	642	1166	6.2	-0.9	48.3	89.8	31.4	55.6	0.57	0.30

This calving ease driven young bull will add some value to his new owner's herd. His dam, 70Z, is one of our most cherished young females. He has continued to come on since weaning after starting life with just a 70 pound birth weight. 34D ranks in the top 20% of the group for post weaning ADG. **Recommended for heifers.**



Lot 57

58

MCCOY 001A *Nobel* ET 41D DLF IEF HYF

C03023766 ZTM 41D FEBRUARY 9, 2016 DEHORND

KCF BENNETT 9126J R294 DLF IEF HYF  
**GERBER ANODYNE 001A**  
 GERBER 627S HOLLY 096Y

RU 20X GALAXY 58G  
**MCCOY 58G CONNIE 70Z** DLF IEF HYF  
 MCCOY 73R CONNIE 92W

CL 1 DOMINO 9126J 1ET  
 KCF MISS 3008 N344 DLF IEF HYF  
 GERBER SQUIRE 627S  
 GERBER 116K HOLLY T115  
 REMITALL KEYNOTE 20X  
 RU 10A ELM 57E  
 LAMPORT'S 87N PARAGON 73R  
 MCCOY 740C CONNIE 78J

BW	CE	ADJ 205DW	ADJ 365 DW	CE	BW	WW	YW	MILK	TM	REA	MARB
76	U	713	1186	5.5	0.5	54.4	103.7	29.3	56.5	0.61	0.30

41D is a short marked, good haired son of Anodyne. Lots of calving ease here with strong post weaning performance. His flush sibling sells as Lot 57 (34D). A maternal brother sold to Evergreen Cattle Co. in our 2015 sale. **Recommended for heifers.**



Lot 58



**McCoy Cattle Co.**

This is unfortunately the last group of bulls sired by Equity 70Y, after losing him in the summer of 2015 and not having any semen in the tank. This sire group speaks for itself. He has bred as consistently as any sire we have used. We expect the daughters he has left us will continue to produce the next generation of herd bulls in our breeding program. They are simply the right kind.



Equity 70Y

**Ref Sire**

JDH 117R *Equity* 70Y ET DLF IEF HYF

PC02974328 70Y MARCH 17, 2011 POLLED

CE	BW	WW	YW	MILK	TM	MCE	REA	MARB
2.1	4.7	50.5	81.8	20.0	45.3	5.1	0.37	0.15



Lot 59

**59**

MCCOY 70Y *Outcome* 45D

PC03020997 ZTM 45D FEBRUARY 12, 2016 POLLED

SHF RIB EYE M326 R117 DLF IEF HYF  
**JDH 117R EQUITY 70Y ET** DLF IEF HYF  
 JDH MS P606 BOOMER 20R

KCF BENNETT 3008 M326 DLF IEF HYF  
 HVH MISS HUDSON 83K 8M  
 PW VICTOR BOOMER P606  
 JDH MS ONLINE 13N  
 C&T 12R BOBCAT ET 60U  
 MCCOY 60U JETSTREAM ET 95X DLF IEF HYF  
**MCCOY 95X LADY 32Z**  
 MCCOY 25M LADY 10W DLF IEF HYF

MCCOY 58G ALISON 121N DLF IEF HYF  
 GHR MILLIONAIRE 10E 25M  
 MCCOY 30N LADY 37S DLF IEF HYF

BW	CE	ADJ 205DW	ADJ 365 DW	CE	BW	WW	YW	MILK	TM	REA	MARB
98	U	672	1230	0.3	4.7	52.6	88.6	18.3	44.6	0.43	-0.08

45D is very typical of why the Equity sons continue to be favorites to many year after year. He is short marked, good haired, big testicled and has had the look of a breeding bull since the day he was born. Don't miss this guy on the 22nd.



Lot 60

**60**

MCCOY 70Y *Pacific* 88D

PC03021006 ZTM 88D FEBRUARY 21, 2016 POLLED

SHF RIB EYE M326 R117 DLF IEF HYF  
**JDH 117R EQUITY 70Y ET** DLF IEF HYF  
 JDH MS P606 BOOMER 20R

KCF BENNETT 3008 M326 DLF IEF HYF  
 HVH MISS HUDSON 83K 8M  
 PW VICTOR BOOMER P606  
 JDH MS ONLINE 13N  
 TH 223 71I VICTOR 755T DLF IEF HYF  
 TH 8J 57G LORETTA 6M DLF IEF HYF  
**MCCOY 31Y DAHLIA 113A** DLF IEF HYF  
 MCCOY 58G DAHLIA 42T

MCCOY 397E DAHLIA 44H

BW	CE	ADJ 205DW	ADJ 365 DW	CE	BW	WW	YW	MILK	TM	REA	MARB
90	U	670	1180	1.5	4.4	51.7	85.2	21.7	47.6	0.34	0.18

We can't make them much stouter than 88D. He has been a bull that has been fun to watch develop since last spring. His young Pinnacle dam is the right kind producing a bull for TL Farms in last year's sale. His grand dam is a foundation female in our program.



McCoy Hereford Yearlings...

61

MCCOY 70Y *Pioneer* 110D

PC03021009 ZTM 110D FEBRUARY 26, 2016 POLLED

SHF RIB EYE M326 R117 DLF IEF HYF  
**JDH 117R EQUITY 70Y ET** DLF IEF HYF  
 JDH MS P606 BOOMER 20R

KCF BENNETT 3008 M326 DLF IEF HYF  
 HVH MISS HUDSON 83K 8M  
 PW VICTOR BOOMER P606  
 JDH MS ONLINE 13N  
 MCCOY 55M ABSOLUTE 49S DLF IEF HYF  
 HI-DELL 37 BRANDY 29N  
 BBSF 2214 RAMROD 10R  
 TWIN-VIEW 32K MERISSA 32P

MCCOY 49S CANADIAN 94W DLF IEF HYF  
**MCCOY 94W MERISSA 51Y**  
 MCCOY 10R MERISSA 153W

BW	CE	ADJ 205DW	ADJ 365 DW	CE	BW	WW	YW	MILK	TM	REA	MARB
94	U	686	1197	2.2	3.3	48.5	85.2	18.6	42.9	0.36	-0.04

You won't miss this Equity son on sale day. 110D is another example of how Equity has bred for us. He is a textbook Equity son; great haired, big testicled, big hipped and all breeding bull.



Lot 61

62

MCCOY 70Y *Tattoo* 53D

PC03028891 ZTM 53D FEBRUARY 13, 2016 POLLED

SHF RIB EYE M326 R117 DLF IEF HYF  
**JDH 117R EQUITY 70Y ET** DLF IEF HYF  
 JDH MS P606 BOOMER 20R

KCF BENNETT 3008 M326 DLF IEF HYF  
 HVH MISS HUDSON 83K 8M  
 PW VICTOR BOOMER P606  
 JDH MS ONLINE 13N  
 FELTONS LEGEND 24Z  
 SHF INTRSTATE D03 G06 ET  
 GHC NEVER LOOK BACK ET 30N  
 MCCOY 32K VICKIE 144R

SHF PROGRESS P20  
**MCCOY P20 VICKIE 10Y**  
 MCCOY 30N VICKIE 91W

BW	CE	ADJ 205DW	ADJ 365 DW	CE	BW	WW	YW	MILK	TM	REA	MARB
86	U	516	963	5.0	0.4	37.3	58.5	17.2	35.9	0.29	0.11

This Equity x Progress combination is not the biggest bull in the pen, but will add calving ease and depth of quarter to his progeny. His Progress dam has an udder that is difficult to match.



Lot 62

63

MCCOY 70Y *Oracle* 62D

PC03021003 ZTM 62D FEBRUARY 16, 2016 POLLED

SHF RIB EYE M326 R117 DLF IEF HYF  
**JDH 117R EQUITY 70Y ET** DLF IEF HYF  
 JDH MS P606 BOOMER 20R

KCF BENNETT 3008 M326 DLF IEF HYF  
 HVH MISS HUDSON 83K 8M  
 PW VICTOR BOOMER P606  
 JDH MS ONLINE 13N  
 TH 223 711 VICTOR 755T DLF IEF HYF  
 TH 8J 57G LORETTA 6M DLF IEF HYF  
 MCCOY 532M POWERHOUSE 77P  
 MCCOY 194L ALISON 16N

TH 6M 755T PINNACLE 31Y DLF IEF HYF  
**MCCOY 31Y ALISON 176A**  
 MCCOY 77P ALISON 61T

BW	CE	ADJ 205DW	ADJ 365 DW	CE	BW	WW	YW	MILK	TM	REA	MARB
91	U	638	1113	1.9	4.0	49.2	80.8	20.5	45.1	0.33	0.11

This rugged Equity son has been a bull that has been easy to spot in the group all year. Make sure you have a look at him sale day as his picture doesn't do him justice. He is a breeding bull.



Lot 63



Lot 64

64

MCCOY 70Y *Knockout* 83D

PC03021005 ZTM 83D FEBRUARY 19, 2016 POLLED

SHF RIB EYE M326 R117 DLF IEF HYF  
**JDH 117R EQUITY 70Y ET** DLF IEF HYF  
 JDH MS P606 BOOMER 20R

GHC SPOT LIGHT 39S  
**TWIN-VIEW 39S OLIVIA 8Y**  
 JAC LADY GRAYSON 11U

KCF BENNETT 3008 M326 DLF IEF HYF  
 HVH MISS HUDSON 83K 8M  
 PW VICTOR BOOMER P606  
 JDH MS ONLINE 13N  
 GHC PREMIER 155K  
 MCCOY 32K SUSIE 11M  
 JAC DOMINGUEZ 7R  
 BRAESWOLD 14G LADY GRAYSON 95K

BW	CE	ADJ 205DW	ADJ 365 DW	CE	BW	WW	YW	MILK	TM	REA	MARB
106	U	745	1335	1.1	5.1	59.5	95.4	21.7	51.5	0.45	0.12

If you are looking for pay weight in the fall 83D may the bull for you. Big performance in an attractive, well-marked, powerful package. The hip and top in this bull is pretty impressive when you get behind him.



Lot 65

65

MCCOY 70Y *Major* 114D

PC03021010 ZTM 114D FEBRUARY 26, 2016 POLLED

SHF RIB EYE M326 R117 DLF IEF HYF  
**JDH 117R EQUITY 70Y ET** DLF IEF HYF  
 JDH MS P606 BOOMER 20R

RU 20X GALAXY 58G  
**MCCOY 58G DAHLIA 42T**  
 MCCOY 397E DAHLIA 44H

KCF BENNETT 3008 M326 DLF IEF HYF  
 HVH MISS HUDSON 83K 8M  
 PW VICTOR BOOMER P606  
 JDH MS ONLINE 13N  
 REMITALL KEYNOTE 20X  
 RU 10A ELM 57E  
 SQUARE-D COMMANDER 397E  
 MCCOY Y26 DAHLIA 11E

BW	CE	ADJ 205DW	ADJ 365 DW	CE	BW	WW	YW	MILK	TM	REA	MARB
93	U	663	1162	0.9	4.5	50.1	85.9	19.9	45.0	0.33	0.13

114D hasn't been difficult to find in the pen. Another Equity son that looks like he will be a strong breeding bull. His dam, 42T, has been a mainstay in our program. She is also the grand dam of Lot 60 (88D).



Lot 66

66

MCCOY 70Y *Prestige* 123D

PC03024191 ZTM 123D FEBRUARY 28, 2016 POLLED

SHF RIB EYE M326 R117 DLF IEF HYF  
**JDH 117R EQUITY 70Y ET** DLF IEF HYF  
 JDH MS P606 BOOMER 20R

TH 122 71I VICTOR 719T DLF IEF HYF  
**MCCOY 719T CONNIE 20Z**  
 MCCOY 264P CONNIE 11T DLF IEF HYF

KCF BENNETT 3008 M326 DLF IEF HYF  
 HVH MISS HUDSON 83K 8M  
 PW VICTOR BOOMER P606  
 JDH MS ONLINE 13N  
 DRF JWR PRINCE VICTOR 71I  
 KBCR 19D DOMINETTE 122 DLF IEF  
 MJT CENTURY 264P  
 MCCOY 58G CONNIE 119L

BW	CE	ADJ 205DW	ADJ 365 DW	CE	BW	WW	YW	MILK	TM	REA	MARB
82	U	602	951	3.8	2.4	47.5	77.8	22.8	46.6	0.34	0.10

As you can tell by his picture this moderate framed character is very complete with extra shape over his top and through his quarter. Short marked and great calving ease as well

*McCoy Hereford Yearlings...*

**67**

MCCOY 70Y *Meridian* 131D

PC03024236 ZTM 131D MARCH 1, 2016 POLLED

SHF RIB EYE M326 R117 DLF IEF HYF  
**JDH 117R EQUITY 70Y ET** DLF IEF HYF  
 JDH MS P606 BOOMER 20R

KCF BENNETT 3008 M326 DLF IEF HYF  
 HVH MISS HUDSON 83K 8M  
 PW VICTOR BOOMER P606  
 JDH MS ONLINE 13N  
 TH 223 711 VICTOR 755T DLF IEF HYF  
 TH 8J 57G LORETTA 6M DLF IEF HYF  
 MCCOY 151L OPPORTUNITY 47N  
 MCCOY 58G MARG 93L

TH 6M 755T PINNACLE 31Y DLF IEF HYF  
**MCCOY 31Y MARG 238A**  
 MCCOY 47N MARG 155R

BW	CE	ADJ 205DW	ADJ 365 DW	CE	BW	WW	YW	MILK	TM	REA	MARB
89	U	613	1115	1.7	3.7	49.6	80.1	21.1	45.9	0.33	0.13

If you are looking for extra top and hip in a moderate package here is your bull. His grand dam has been a great producing long lived female for us. This cow family goes back to a female purchased from XTC Ranches over 20 years ago.



Lot 67

**68**

MCCOY 70Y *Macho* 134D

PC03024198 ZTM 134D MARCH 2, 2016 POLLED

SHF RIB EYE M326 R117 DLF IEF HYF  
**JDH 117R EQUITY 70Y ET** DLF IEF HYF  
 JDH MS P606 BOOMER 20R

KCF BENNETT 3008 M326 DLF IEF HYF  
 HVH MISS HUDSON 83K 8M  
 PW VICTOR BOOMER P606  
 JDH MS ONLINE 13N  
 RU 20X BOULDER 57G DLF IEF HYF  
 WALPOLE PHILIS 13F  
 GLENLEES CL 300M BUICK 162R  
 GHC MISS NANCY 49P

GHC VOLUME III ET 139S  
**GHC MISS DEW 42X**  
 GHC MISS JUNE 15T

BW	CE	ADJ 205DW	ADJ 365 DW	CE	BW	WW	YW	MILK	TM	REA	MARB
106	U	627	1160	-1.1	5.6	51.7	87.4	16.3	42.2	0.40	0.09

134D is a long bodied, attractive fronted, well-rounded individual. It is difficult to find many holes in him. Very solid from top to bottom. He is gaining well above the group average post weaning.



Lot 68

**69**

MCCOY 70Y *Gambler* 142D

PC03024238 ZTM 142D MARCH 2, 2016 POLLED

SHF RIB EYE M326 R117 DLF IEF HYF  
**JDH 117R EQUITY 70Y ET** DLF IEF HYF  
 JDH MS P606 BOOMER 20R

KCF BENNETT 3008 M326 DLF IEF HYF  
 HVH MISS HUDSON 83K 8M  
 PW VICTOR BOOMER P606  
 JDH MS ONLINE 13N  
 TH 223 711 VICTOR 755T DLF IEF HYF  
 TH 8J 57G LORETTA 6M DLF IEF HYF  
 RU 20X GALAXY 58G  
 MCCOY 397E SUE 2H

TH 6M 755T PINNACLE 31Y DLF IEF HYF  
**MCCOY 31Y SUE 140A**  
 MCCOY 58G SUE 138R

BW	CE	ADJ 205DW	ADJ 365 DW	CE	BW	WW	YW	MILK	TM	REA	MARB
93	U	648	1123	2.3	3.6	50.1	81.7	21.0	46.1	0.31	0.13

142D is an interesting son of Equity 70Y that comes from a great cow family. His grand dam is set to calve for the eleventh time this spring. This guy will add hair to his offspring.



Lot 69



30A was one of the most sought after bulls in our 2015 bull sale. Chinook Ranch was the successful bidder that year. We were able to purchase an interest back in him in the spring of 2016. His progeny are deep-sided, easy fleshing, soggy made kind of cattle. We look forward to his daughters coming into production next spring. They are the kind of female our ranch customers are looking for. His dam is one of the strongest females to walk our pastures. She is now a donor female for XTC Ranches. Several of the top bulls in the sale trace back to her directly.



**Ref Sire**

MCCOY 31Y *Kingdom* 30A DLF IEF HYF

PC02984785

ZTM 30A

FEBRUARY 6, 2013

POLLED

CE	BW	WW	YW	MILK	TM	MCE	REA	MARB
3.4	3.5	46.5	83.2	26.1	49.4	2.0	0.22	0.05



**70**

MCCOY 30A *Nucleus* 99D

PC03024184

ZTM 99D

FEBRUARY 22, 2016

POLLED

TH 6M 755T PINNACLE 31Y DLF IEF HYF  
**MCCOY 31Y KINGDOM 30A** DLF IEF HYF  
 MCCOY 58G TRISHA 8U DLF IEF HYF  
 BBSF 68R ULTIMATE 23U DLF IEF HYF  
**MCCOY 23U MELISSA 236Z**  
 MCCOY 47N MELISSA 120S

TH 223 71I VICTOR 755T DLF IEF HYF  
 TH 8J 57G LORETTA 6M DLF IEF HYF  
 RU 20X GALAXY 58G  
 DXB 2214 TRISHA 49P  
 JNHR RED STANDARD 68R DLF IEF HYF  
 BBSF 7C RUBY 10N DLF IEF HYF  
 MCCOY 151L OPPORTUNITY 47N  
 MCCOY 58G MELISSA 20N

BW	CE	ADJ 205DW	ADJ 365 DW	CE	BW	WW	YW	MILK	TM	REA	MARB
96	U	681	1157	0.5	4.9	50.8	86.0	23.6	49.0	0.23	0.01

Watch for this stout made, good haired, short marked character on sale day. 99D has the look that we are trying to breed for. His dam is quickly emerging as a dam that needs to enter our ET program in the future.



**71**

MCCOY 30A *Pilot* 148D

PC03024241

ZTM 148D

MARCH 4, 2016

POLLED

TH 6M 755T PINNACLE 31Y DLF IEF HYF  
**MCCOY 31Y KINGDOM 30A** DLF IEF HYF  
 MCCOY 58G TRISHA 8U DLF IEF HYF  
 BBSF 68R ULTIMATE 23U DLF IEF HYF  
**MCCOY 23U ROSE 93Y**  
 MCCOY 25M ROSE 79U DLF IEF HYF

TH 223 71I VICTOR 755T DLF IEF HYF  
 TH 8J 57G LORETTA 6M DLF IEF HYF  
 RU 20X GALAXY 58G  
 DXB 2214 TRISHA 49P  
 JNHR RED STANDARD 68R DLF IEF HYF  
 BBSF 7C RUBY 10N DLF IEF HYF  
 GHR MILLIONAIRE 10E 25M  
 LEVELDALE ROSE 15M 4R

BW	CE	ADJ 205DW	ADJ 365 DW	CE	BW	WW	YW	MILK	TM	REA	MARB
99	U	578	1017	0.4	5.4	47.6	82.8	19.5	43.3	0.23	-0.10

This 30A son is a rugged, short marked beef bull. Expect him to leave daughters that are long-lived and easy fleshing.

McCoy Hereford Yearlings...

72

MCCOY 30A *Phantom* 137D

PC03024237 ZTM 137D MARCH 2, 2016 POLLED

TH 6M 755T PINNACLE 31Y DLF IEF HYF TH 223 711 VICTOR 755T DLF IEF HYF  
 TH 8J 57G LORETTA 6M DLF IEF HYF  
**MCCOY 31Y KINGDOM 30A** DLF IEF HYF RU 20X GALAXY 58G  
 MCCOY 58G TRISHA 8U DLF IEF HYF DXB 2214 TRISHA 49P  
 JNHR RED STANDARD 68R DLF IEF HYF  
 BBSF 68R ULTIMATE 23U DLF IEF HYF BBSF 7C RUBY 10N DLF IEF HYF  
**MCCOY 23U ZENA 198Z** KJ 520E INVESTOR 532M ET  
 DOUBLE-U MISS INVESTOR 11S MCCOY 194L ZENA 89N

BW	CE	ADJ 205DW	ADJ 365 DW	CE	BW	WW	YW	MILK	TM	REA	MARB
92	U	573	975	1.1	3.9	42.4	74.0	21.3	42.5	0.20	-0.08

137D is a deep sided, soggy made bull that are so typical of the 30A progeny. His dam's udder ranks near the top of our herd.



Lot 72

73

MCCOY 30A *Paramount* 138D

PC03024200 ZTM 138D TWIN MARCH 2, 2016 POLLED

TH 6M 755T PINNACLE 31Y DLF IEF HYF TH 223 711 VICTOR 755T DLF IEF HYF  
 TH 8J 57G LORETTA 6M DLF IEF HYF  
**MCCOY 31Y KINGDOM 30A** DLF IEF HYF RU 20X GALAXY 58G  
 MCCOY 58G TRISHA 8U DLF IEF HYF DXB 2214 TRISHA 49P  
 RU 20X GALAXY 58G  
 KIRBY-LONE PINE SANTANA ET 91S DLF IEF HYF WTK 21F SYBIL 109J  
**XLP CLF AMBER 91S 22X** DCC THOMASTON 2103 ET DLF IEF HYF  
 XLP CLF AMBER 22T JAC AMBER 22R DLF IEF HYF

BW	CE	ADJ 205DW	ADJ 365 DW	CE	BW	WW	YW	MILK	TM	REA	MARB
75	U	608	1012	N/A	3.2	44.8	79.8	23.6	46.0	0.29	0.04

Here is another 30A son that I would describe as being typical of the 30A progeny. This prospect is line bred to Galaxy 58G, a bull that we used naturally for ten years.



Lot 73

74

MCCOY 30A *Plateau* 139D

PC03024203 ZTM 139D TWIN MARCH 2, 2016 POLLED

TH 6M 755T PINNACLE 31Y DLF IEF HYF TH 223 711 VICTOR 755T DLF IEF HYF  
 TH 8J 57G LORETTA 6M DLF IEF HYF  
**MCCOY 31Y KINGDOM 30A** DLF IEF HYF RU 20X GALAXY 58G  
 MCCOY 58G TRISHA 8U DLF IEF HYF DXB 2214 TRISHA 49P  
 RU 20X GALAXY 58G  
 KIRBY-LONE PINE SANTANA ET 91S DLF IEF HYF WTK 21F SYBIL 109J  
**XLP CLF AMBER 91S 22X** DCC THOMASTON 2103 ET DLF IEF HYF  
 XLP CLF AMBER 22T JAC AMBER 22R DLF IEF HYF

BW	CE	ADJ 205DW	ADJ 365 DW	CE	BW	WW	YW	MILK	TM	REA	MARB
77	U	562	1007	N/A	2.8	41.3	75.2	23.6	44.3	0.26	0.04

139D is a long sided, easy fleshing, good haired 30A son. The 30A sons will produce extra fleshing and doability in their progeny.



Lot 74



Encore is one of the leading performance bulls in North America at this time. He has been used extensively to add growth and carcass quality (specifically high end marbling value). I expect these will be the first sons to sell in Canada (likely the only ones in 2017). You will see much more of this sire in the future.

**Ref Sire** KCF BENNET *Encore* Z311 ET DLF IEF HYF  
 PC03016493 Z311 SEPTEMBER 21, 2012 POLLED

CE	BW	WW	YW	MILK	TM	MCE	REA	MARB
3.8	2.7	80.8	121.2	24.3	64.7	2.5	0.35	0.69



**75** MCCOY Z311 *Highlight* 49D  
 PC03020998 ZTM 49D FEBRUARY 13, 2016 POLLED

SCHU-LAR ON TARGET 22S  
**KCF BENNETT ENCORE Z311 ET** DLF IEF HYF  
 KCF MISS REVOLUTION X338 ET

LOEWEN M326 SIR 33T DLF IEF  
**MCCOY 33T ZENA 48Z**  
 MCCOY 264P ZENA 49W

SCHU-LAR 5N OF 9L 3008  
 SCHU-LAR 208 OF 1H 121 ET  
 MSU TCF REVOLUTION 4R DLF IEF HYF  
 JW 718 VICTORIA 9106  
 KCF BENNETT 3008 M326 DLF IEF HYF  
 HVH OKSANA 4L 33N DLF IEF HYF  
 MJT CENTURY 264P  
 MCCOY 52G ZENA 7L

BW	CE	ADJ 205DW	ADJ 365 DW	CE	BW	WW	YW	MILK	TM	REA	MARB
89	U	745	1315	3.2	2.7	72.2	108.0	24.2	60.3	0.58	0.35

This Encore x 33T bred bull is a combination of some of our freshest new genetics. He is long sided, big hipped, and very attractive. The Encore calves continue to impress post-weaning. A maternal brother sold in 2016 to Chinook Ranch. He was a member of our Champion Hereford Pen at Agribition.



**76** MCCOY Z311 *Mandate* 64D  
 PC03020612 ZTM 64D FEBRUARY 16, 2016 POLLED

SCHU-LAR ON TARGET 22S  
**KCF BENNETT ENCORE Z311 ET** DLF IEF HYF  
 KCF MISS REVOLUTION X338 ET

C&T 12R BOBCAT ET 60U  
**MCCOY 60U TRISHA 44Y**  
 MCCOY 58G TRISHA 8U DLF IEF HYF

SCHU-LAR 5N OF 9L 3008  
 SCHU-LAR 208 OF 1H 121 ET  
 MSU TCF REVOLUTION 4R DLF IEF HYF  
 JW 718 VICTORIA 9106  
 GHC CANUCK 12R  
 C&T 4G SCARLET 17K  
 RU 20X GALAXY 58G  
 DXB 2214 TRISHA 49P

BW	CE	ADJ 205DW	ADJ 365 DW	CE	BW	WW	YW	MILK	TM	REA	MARB
92	U	660	1174	0.7	3.6	66.6	108.3	22.6	55.9	0.35	0.34

Don't miss this Encore son on sale day. His dam is one of our best. His grand dam is establishing herself as a front end donor dam for XTC Ranches. He is short marked, dark colored and fully pigmented. His progeny will be maternal, stout and easy fleshing.

McCoy Hereford Yearlings...



## McCoy Cattle Co.

The 33T progeny continue to appreciate in value over time. 33T was purchased from Loewen Herefords in Oklahoma at four years of age. We had the misfortune of losing him after just three weeks of service.

Fortunately we have a bank of semen and will continue to use him via AI going forward. 33T shows up in many of the top selling individuals for Loewens and Sandhill Farms in recent years. His progeny are deep sided, long bodied, thick quartered, and short marked. We only have a few daughters but they are producing some of our best each year.



Sir 33T

### Ref Sire

LOEWEN M326 *Sir* 33T DLF IEF

PC02956736

33T

FEBRUARY 17, 2007

POLLED

CE	BW	WW	YW	MILK	TM	MCE	REA	MARB
2.6	3.9	66.2	104.2	23.1	56.2	4.7	0.92	0.05

77

MCCOY 33T *Original* 20D

PC03020995

ZTM 20D

FEBRUARY 1, 2016

POLLED

KCF BENNETT 3008 M326 DLF IEF HYF  
**LOEWEN M326 SIR 33T** DLF IEF  
 HVH OKSANA 4L 33N DLF IEF HYF

SHF PROGRESS P20  
**MCCOY P20 LASSIE 19Z**  
 MCCOY 60U LASSIE 56X

RRH MR FELT 3008  
 KCF MISS 459 F284  
 HVH KREMLIN 57F 108K  
 HVH GENETIC QUEEN 53H 4L DLF IEF HYF  
 FELTONS LEGEND 242  
 SHF INTRSTATE D03 G06 ET  
 C&T 12R BOBCAT ET 60U  
 GHC MISS LASSIE 49N

BW	CE	ADJ 205DW	ADJ 365 DW	CE	BW	WW	YW	MILK	TM	REA	MARB
89	U	688	1230	3.5	2.5	59.5	90.0	22.5	52.3	0.55	0.24

20D is a bull that we have admired all year long. We were very unfortunate to lose his sire, 33T, shortly after we purchased him from Loewen Herefords in Oklahoma. We have continued to use him via AI, as his progeny appreciate in value each year. 20D was a member of our Champion Hereford Pen of Bulls at Agribition last fall.



Lot 77



"Champion Pen of Hereford Bulls Agribition 2016" - one son of 33T and another bull in pen out of a dam sired by 33T



We were fortunate to purchase embryos from Crittenden Brothers in 2015 that resulted in two front end All Star sons being born at McCoy Cattle Co. in 2016. This grandson of the maternal legend, UPS Domino 3027, has been used very successfully in the Sandhill Farm's program. All Star will improve thickness, doability, udder type, and carcass quality.



All Star

**Ref Sire**

SHF *All Star* 42X A191 DLF IEF HYF

PC03004637

A191

MARCH 7, 2013

POLLED

CE	BW	WW	YW	MILK	TM	MCE	REA	MARB
3.7	3.3	59.7	98.8	21.8	51.7	6.3	0.45	0.43



Lot 78

**78**

MCCOY A191 *Granite* 28D DLF IEF HYF

PC03024947

ZTM 28D

FEBRUARY 5, 2016

POLLED

K&B SENTINEL 0042X  
**SHF ALL STAR 42X A191** DLF IEF HYF  
 SHF MISS M326 T08 ET

MCCOY 47N THROTTLE 98S DLF IEF HYF  
**GHC MISS WILMA 168X** DLF IEF HYF  
 GHC MISS PHILIS 33S

UPS DOMINO 3027 DLF IEF HYF  
 K&B RED LADY 8045  
 KCF BENNETT 3008 M326 DLF IEF HYF  
 SHF POSTIVE MISS 73C M15  
 MCCOY 151L OPPORTUNITY 47N  
 MCCOY 58G WILMA 80K  
 GHC STAR MOOSE 59M  
 LCPH 213K MISS MARTINA 4M

BW	CE	ADJ 205DW	ADJ 365 DW	CE	BW	WW	YW	MILK	TM	REA	MARB
89	U	715	1218	1.6	3.4	55.2	86.2	20.8	48.4	0.33	0.26

We had two All Star sons born at our place in 2016. This guy is a top end prospect and we are retaining the other for herd sire duties. The All Star progeny have a bit more thickness, hip, and dimension than most. 28D is typical of this type.



Son of All Star





Worldwide Son - Flush brother to Lot 79 & 80

We used Worldwide specifically in a couple of situations for the extreme calving ease and female type that he produces. His sons offered in the sale this year are from a specific flush that resulted in very strong bull and heifer calves. The heifers won't be leaving our place.

**Ref Sire** BOYD *Worldwide* 9050 ET DLF IEF HYF  
 PC02948469 9050 FEBRUARY 22, 2009 POLLED

CE	BW	WW	YW	MILK	TM	MCE	REA	MARB
8.9	-1.0	44.2	60.9	28.4	50.5	4.6	0.08	0.24

**79** MCCOY 9050 *Maestro* ET 14D DLF IEF HYF  
 PC03023762 ZTM 14D JANUARY 28, 2016 POLLED

SHF RIB EYE M326 R117 DLF IEF HYF  
**BOYD WORLDWIDE 9050 ET** DLF IEF HYF  
 MSU TCF RACHAEL 22S ET

KCF BENNETT 3008 M326 DLF IEF HYF  
 HVH MISS HUDSON 83K 8M  
 FELTONS LEGEND 242  
 MSU TCF RACHAEL ET 54N DLF IEF HYF  
 MCCOY 55M ABSOLUTE 49S DLF IEF HYF  
 HI-DELL 37 BRANDY 29N  
 STAR 67J ECLIPSE 135S  
 MCCOY 397E SUE 2H

MCCOY 49S CANADIAN 94W DLF IEF HYF  
**MCCOY 94W SUE 58Y** DLF IEF HYF  
 MCCOY 135S SUE 29U DLF IEF HYF

BW	CE	ADJ 205DW	ADJ 365 DW	CE	BW	WW	YW	MILK	TM	REA	MARB
80	U	683	1076	5.2	0.0	47.3	68.3	21.8	45.5	0.17	0.12

14D is a complete, well balanced bull that resulted from the successful ET mating of Worldwide and 58Y. We had five full siblings born from this mating in 2016. We are retaining a flush brother for herd sire duties at MCC. **Recommended for heifers.**



Lot 79

**80** MCCOY 9050 *Leadoff* ET 24D DLF IEF HYF  
 PC03023773 ZTM 24D FEBRUARY 4, 2016 POLLED

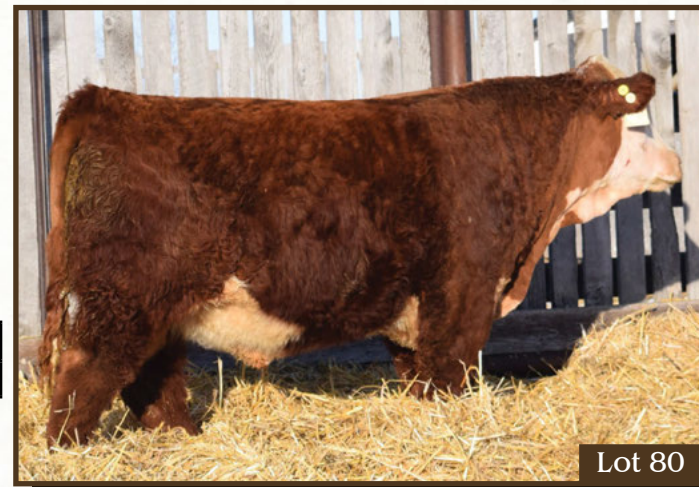
SHF RIB EYE M326 R117 DLF IEF HYF  
**BOYD WORLDWIDE 9050 ET** DLF IEF HYF  
 MSU TCF RACHAEL 22S ET

KCF BENNETT 3008 M326 DLF IEF HYF  
 HVH MISS HUDSON 83K 8M  
 FELTONS LEGEND 242  
 MSU TCF RACHAEL ET 54N DLF IEF HYF  
 MCCOY 55M ABSOLUTE 49S DLF IEF HYF  
 HI-DELL 37 BRANDY 29N  
 STAR 67J ECLIPSE 135S  
 MCCOY 397E SUE 2H

MCCOY 49S CANADIAN 94W DLF IEF HYF  
**MCCOY 94W SUE 58Y** DLF IEF HYF  
 MCCOY 135S SUE 29U DLF IEF HYF

BW	CE	ADJ 205DW	ADJ 365 DW	CE	BW	WW	YW	MILK	TM	REA	MARB
80	U	618	1068	4.6	0.4	46.0	71.8	19.5	42.5	0.21	0.11

24D is a short-marked, easy calving prospect sired by Worldwide. He is a flush brother to Lot 79 (14D). He has two flush sisters that rank at the top of our replacement heifer pen. His dam has produced lead-off bulls in the past two sales, selling to Mount Sentinel Ranch and Les Froh. **Recommended for heifers.**



Lot 80



719T is one of the top proven sires in the breed, consistently reducing birth weight, increasing milk, improving udder quality, and siring above average growth. We have a number of daughters in production in our program that are the right kind. You will continue to see his influence in our program for years to come.

**Ref Sire**

TH 122 711 *Victor* 719T DLF IEF HYF

PC02942339

719

JANUARY 24, 2007

POLLED

CE	BW	WW	YW	MILK	TM	MCE	REA	MARB
8.2	0.5	61.1	89.2	29.0	59.6	-0.2	0.38	-0.04



**81**

MCCOY 719T *Margin* 7D

PC03020993

ZTM 7D

JANUARY 25, 2016

POLLED

DRF JWR PRINCE VICTOR 711  
**TH 122 711 VICTOR 719T** DLF IEF HYF  
 KBCR 19D DOMINETTE 122 DLF IEF

SHF PROGRESS P20  
**MCCOY P20 ZENA 1B**  
 MCCOY 23U ZENA 142Z

HRP THM VICTOR 109W 9329  
 RHF 964 VICTRA 4057  
 NJW 1Y WRANGLER 19D  
 KBCR DOMINETTE 9112  
 FELTONS LEGEND 242  
 SHF INTRSTATE D03 G06 ET  
 BBSF 68R ULTIMATE 23U DLF IEF HYF  
 MCCOY 58G ZENA 170S

BW	CE	ADJ 205DW	ADJ 365 DW	CE	BW	WW	YW	MILK	TM	REA	MARB
76	U	686	1065	7.5	-0.5	53.4	75.9	27.3	54.0	0.22	0.12

Here is a sleep easy calving ease sire. He will reduce birthweight and improve udder structure and teat size in his daughters. We think enough of his dam that we flushed her as a two year old this spring. **Recommended for heifers.**

Lot 81



**82**

MCCOY 719T *Mission* ET 29D DLF IEF HYF

PC03023770

ZTM 29D

FEBRUARY 5, 2016

POLLED

DRF JWR PRINCE VICTOR 711  
**TH 122 711 VICTOR 719T** DLF IEF HYF  
 KBCR 19D DOMINETTE 122 DLF IEF

GHC NEVER LOOK BACK ET 30N  
**MCCOY 30N LADY 37S** DLF IEF HYF  
 MCCOY 58G LADY 41P

HRP THM VICTOR 109W 9329  
 RHF 964 VICTRA 4057  
 NJW 1Y WRANGLER 19D  
 KBCR DOMINETTE 9112  
 WTK 75A CONTINENTAL 66F  
 WALPOLE PHILIS 13F  
 RU 20X GALAXY 58G  
 MCCOY 52G MARG 10K

BW	CE	ADJ 205DW	ADJ 365 DW	CE	BW	WW	YW	MILK	TM	REA	MARB
84	U	662	1109	5.3	1.5	52.7	80.7	19.4	45.8	0.51	-0.10

29D is the result of a very successful flush mating at our place. Two other flush siblings sell. This ET mating is truly a combination of some of the best proven maternal Hereford genetics available. His dam, 37S, has been a no miss female for us. **Recommended for heifers.**

Lot 82

83

MCCOY 719T *Graphic* ET 42D DLF IEF HYF

PC030923765 ZTM 42D FEBRUARY 10, 2016 POLLED

DRF JWR PRINCE VICTOR 71I  
**TH 122 71I VICTOR 719T** DLF IEF HYF  
 KBCR 19D DOMINETTE 122 DLF IEF

GHC NEVER LOOK BACK ET 30N  
**MCCOY 30N LADY 37S** DLF IEF HYF  
 MCCOY 58G LADY 41P

HRP THM VICTOR 109W 9329  
 RHF 964 VICTRA 4057  
 NJW 1Y WRANGLER 19D  
 KBCR DOMINETTE 9112  
 WTK 75A CONTINENTAL 66F  
 WALPOLE PHILIS 13F  
 RU 20X GALAXY 58G  
 MCCOY 52G MARG 10K

BW	CE	ADJ 205DW	ADJ 365 DW	CE	BW	WW	YW	MILK	TM	REA	MARB
95	U	666	1079	2.4	3.4	57.6	93.0	19.0	47.8	0.48	-0.13

42D is likely to catch your eye on sale day. His dam has stood the test of time in our operation and his sire is one of the great, multi-traited, proven sires in the Hereford breed today.



Lot 83

84

MCCOY 719T *Manifest* ET 52D DLF IEF HYF

PC030923764 ZTM 52D FEBRUARY 13, 2016 POLLED

DRF JWR PRINCE VICTOR 71I  
**TH 122 71I VICTOR 719T** DLF IEF HYF  
 KBCR 19D DOMINETTE 122 DLF IEF

GHC NEVER LOOK BACK ET 30N  
**MCCOY 30N LADY 37S** DLF IEF HYF  
 MCCOY 58G LADY 41P

HRP THM VICTOR 109W 9329  
 RHF 964 VICTRA 4057  
 NJW 1Y WRANGLER 19D  
 KBCR DOMINETTE 9112  
 WTK 75A CONTINENTAL 66F  
 WALPOLE PHILIS 13F  
 RU 20X GALAXY 58G  
 MCCOY 52G MARG 10K

BW	CE	ADJ 205DW	ADJ 365 DW	CE	BW	WW	YW	MILK	TM	REA	MARB
80	U	658	1135	6.9	0.5	51.2	78.6	18.8	44.4	0.47	-0.12

This 719T sired prospect will pack extra calving ease and maternal depth. You can expect his daughters to have improved udder quality and teat size. Two flush brothers sell. **Recommended for heifers.**



Lot 84

85

MCCOY 719T *Express* 80D

PC030928886 ZTM 80D FEBRUARY 19, 2016 POLLED

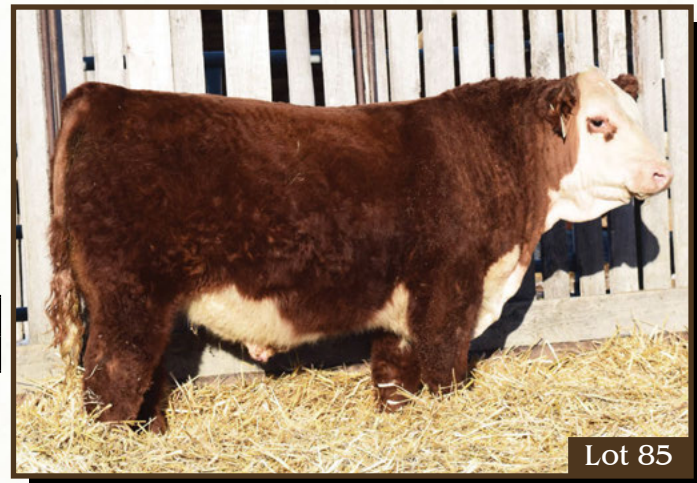
DRF JWR PRINCE VICTOR 71I  
**TH 122 71I VICTOR 719T** DLF IEF HYF  
 KBCR 19D DOMINETTE 122 DLF IEF

MCCOY 743 FACEOFF 5Z DLF IEF HYF  
**MCCOY 5Z VICKIE 58B**  
 MCCOY 23U VICKIE 147Z

HRP THM VICTOR 109W 9329  
 RHF 964 VICTRA 4057  
 NJW 1Y WRANGLER 19D  
 KBCR DOMINETTE 9112  
 CRR ABOUT TIME 743 DLF IEF HYF  
 MCCOY 49S KALLA 61W DLF IEF HYF  
 BBSF 68R ULTIMATE 23U DLF IEF HYF  
 MCCOY R117 VICKIE 22W

BW	CE	ADJ 205DW	ADJ 365 DW	CE	BW	WW	YW	MILK	TM	REA	MARB
80	U	619	1090	6.0	1.1	51.9	82.6	24.9	50.9	0.35	-0.05

This 719T son will be sure to catch your eye on February 22. He is a short marked, red eyed bull that will make calving season a breeze. His dam is a top end young brood cow sired by Faceoff 5Z. **Recommended for heifers.**



Lot 85



Lot 86

86

OSF MCCOY *Disaronno* 152B 308D

PC03027508

ZTM 308D

MARCH 8, 2016

POLLED

SHF MANNING W18 Z22  
**GHC FALCON 152B** DLF IEF HYF  
 GHC MISS WILMA 113Y

GHC VOLUME III ET 139S  
**OSF COLBI 139S ET 205U**  
 HAROLDSON'S COLBI 2Z 59J

SHF WONDER M326 W18 ET DLF IEF HYF  
 SHF PROGRESS T148  
 MCCOY 47N THROTTLE 98S DLF IEF HYF  
 GHC MISS SYBIL 30S  
 RU 20X BOULDER 57G DLF IEF HYF  
 WALPOLE PHILIS 13F  
 HAROLDSON'S RAIDER P183 ET 2Z  
 CCCH PLAIN JANE 32C

BW	CE	ADJ 205DW	ADJ 365 DW	CE	BW	WW	YW	MILK	TM	REA	MARB
90	U	648	1083	-1.3	3.8	51.6	87.3	23.2	49.0	0.25	0.13

308D is a soft made, performance driven son of Falcon. His influential dam has produced three bulls in as many years for the bull sale, with last year's maternal brothers being one of the high sellers.



Lot 87

87

OSF MCCOY *Doubleplay* 152B 304D

PC03027507

OSF 304D

MARCH 4, 2016

POLLED

SHF MANNING W18 Z22  
**GHC FALCON 152B** DLF IEF HYF  
 GHC MISS WILMA 113Y

MCCOY P20 ENTERPRISE 7Z DLF IEF HYF  
**OSF BY EXAMPLE 7Z 220**  
 OSF MARG 909W 207Z

SHF WONDER M326 W18 ET DLF IEF HYF  
 SHF PROGRESS T148  
 MCCOY 47N THROTTLE 98S DLF IEF HYF  
 GHC MISS SYBIL 30S  
 SHF PROGRESS P20  
 MCCOY 25M PAULINE 106W  
 OSF-LIAN NINTH WONDER ET 909W DLF IEF HYF  
 MCCOY 58G MARG 126P

BW	CE	ADJ 205DW	ADJ 365 DW	CE	BW	WW	YW	MILK	TM	REA	MARB
78	U	661	1084	2.8	1.6	50.4	81.3	24.0	49.2	0.14	0.20

304D stacks generations of low birthweight and maternal genetics together and comes in an eye appealing and well pigmented design. His first calf dam looks to play an important role in our future as she is moderate in frame and has an exceptional udder and ideal teat size. **Recommended for heifers.**



Lot 88

88

MCCOY 641Z *Manager* 207D

PC03028898

ZTM 207D

MARCH 30, 2016

POLLED

SHF WONDER M326 W18 ET DLF IEF HYF  
**MCCOY W18 CAMPAIGN ET 641Z** DLF IEF HYF  
 MCCOY 36A SUSIE 75F DLF IEF HYF

GHC NEVER LOOK BACK ET 30N  
**MCCOY 30N CONNIE ET 124U**  
 MCCOY 58G CONNIE 18K

KCF BENNETT 3008 M326 DLF IEF HYF  
 SHF GOVERNESS 236G L37  
 DUSTY-DEE P183 DUALY 36A  
 SQUARE-D SUSIE 662Y  
 WTK 75A CONTINENTAL 66F  
 WALPOLE PHILIS 13F  
 RU 20X GALAXY 58G  
 MCCOY 5X SABRINA 63B

BW	CE	ADJ 205DW	ADJ 365 DW	CE	BW	WW	YW	MILK	TM	REA	MARB
97	U	641	1284	1.6	5.1	57.5	97.1	18.8	47.6	0.41	-0.08

This herd sire prospect comes from one of the dominant cow families at MCC. His dam is a maternal sister to Applause 99W that has worked well for Twin View Farms in Manitoba.

**89**MCCOY 641Z *Jubilee* 154D

PC03024245

ZTM 154D

MARCH 6, 2016

POLLED

SHF WONDER M326 W18 ET DLF IEF HYF SHF GOVERNESS 236G L37  
**MCCOY W18 CAMPAIGN ET 641Z** DLF IEF HYF DUSTY-DEE P183 DUALY 36A  
 MCCOY 36A SUSIE 75F DLF IEF HYF SQUARE-D SUSIE 662Y  
 SHF PROGRESS P20  
 MCCOY P20 BRIGADE 4Y DLF IEF HYF MCCOY 139S DESIRE ET 87W  
**MCCOY 4Y CONNIE 207A** RU 20X GALAXY 58G  
 MCCOY 58G CONNIE 119L MCCOY 5X SABRINA 63B

BW	CE	ADJ 205DW	ADJ 365 DW	CE	BW	WW	YW	MILK	TM	REA	MARB
94	U	699	1178	2.8	3.8	52.6	88.7	22.3	48.6	0.15	0.14

154D is a Campaign son that carries extra length of body that is typical of the Campaign progeny. Campaign is a maternal brother to Jackpot 105X that has bred well for Lilybrook Herefords. 154D's grand dam is the dam of Absolute 49S, a bull that was marketed globally by Semex for years.

**90**OSF MCCOY *Drum Roll* 49S 121D

PC03027384

OSF 121D

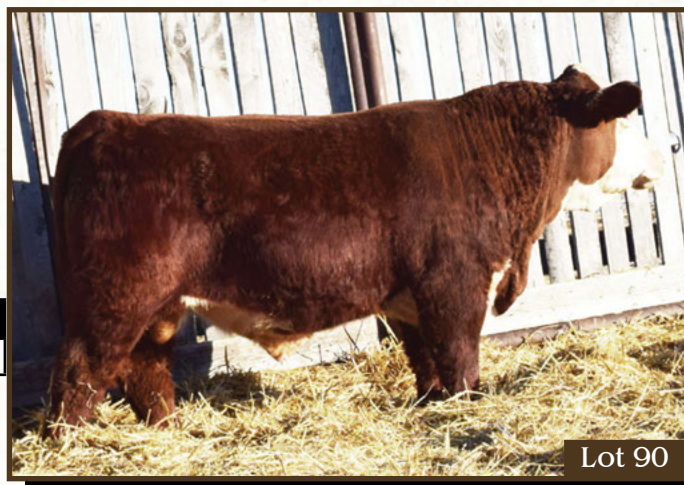
JANUARY 21, 2016

POLLED

MCCOY 3J MATADOR 55M DOUBLE-U JED ET 3J  
**MCCOY 55M ABSOLUTE 49S** DLF IEF HYF MCCOY 397E SUSIE 6H  
 MCCOY 58G CONNIE 119L RU 20X GALAXY 58G  
 MCCOY 5X SABRINA 63B  
 GHC SPOT LIGHT 39S GHC PREMIER 155K  
**BLAIR-ATHOL CREAM QUEEN 1X** MCCOY 32K SUSIE 11M  
 TWIN-VIEW 80L TYRA 50U BBSF 7C LONE RANGER 80L  
 TWIN-VIEW 9G LADY LUCK 4J

BW	CE	ADJ 205DW	ADJ 365 DW	CE	BW	WW	YW	MILK	TM	REA	MARB
85	U	667	1035	6.6	0.1	53.5	85.0	17.9	44.7	0.57	-0.11

121D is a typical Absolute son with low birth weight and good performance. He ranks in the top 10% for CE, BW, STAY and MPI. His dam has been a consistent producer and has an excellent udder and teat size. **Recommended for heifers.**

**91**MCCOY 105X *Heritage* ET 31D DLF IEF HYF

PC03024944

ZTM 31D

FEBRUARY 6, 2016

POLLED

RU 20X GALAXY 58G REMITALL KEYNOTE 20X  
**MCCOY 58G JACKPOT ET 105X** DLF IEF HYF RU 10A ELM 57E  
 MCCOY 36A SUSIE 75F DLF IEF HYF DUSTY-DEE P183 DUALY 36A  
 SQUARE-D SUSIE 662Y  
 AGA 20J STANMORE 21M AGA 121G STANMORE 20J DLF IEF HYF  
 AGA 5C MISS ENERLAD 68K  
**AGA 21M MISS STANMORE 27S** DLF IEF HYF AGA 656U STANDARD ET 124J  
 AGA 124J MISS STANDARD 37N AGA 34Z MISS STANDARD 57K

BW	CE	ADJ 205DW	ADJ 365 DW	CE	BW	WW	YW	MILK	TM	REA	MARB
96	U	725	1164	1.9	3.4	58.9	88.6	21.7	51.2	0.00	0.19

31D is the only Jackpot son offered in this year's sale. Jackpot 105X was purchased by Lilybrook Herefords in our 2012 bull sale. He has gone on to breed very well for Lilybrook and others that have used him via AI. 31D was the result of embryos purchased from Church Ranch in 2015. He has two flush sisters that won't be leaving our place.





F1 Female



***Lot 92 - F1 Hereford x Gelbvieh Females***

For years, we have been crossing Hereford and Gelbvieh breeds. The result has always been a strong set of baldie and brockle face steers and heifers. When the decision was made to exit the purebred Gelbvieh business to simplify our life a bit in the spring of 2015, rather than dispersing, we retained the majority of our Gelbvieh females in the this transition to start an F1 female program producing Hereford x Gelbvieh cross females. New to our 2017 bull sale, we are offering 7 pens of 3 replacement heifers for your choosing. All heifers have been vaccinated with Vista Once SQ and Vision 7 both in the spring and fall of 2016 and received Ivermectin at that time as well. We welcome your evaluation of these 2016 born open heifers on February 22.

***Notes Page***

---

---

---

---

---

---

---

---

---

---

---

---

---

---

---

---

## *Terms & Conditions*

### ***Terms:***

The terms of the sale are cash or cheque, payable at par at the sale location. The right of property shall not pass until after settlement has been made; no invoicing on buyers in attendance unless previous arrangements have been made. Every animal sells to the highest bidder and in cases of disputes the auctioneer's decision will be final. Announcements from the auction block will take precedence over the printed matter in the catalogue. Current exchange rates will be announced sale day. All monies are in Canadian funds.

### ***Certificate of Registration:***

Each animal will carry papers issued by the applicable breed association. A certificate of registry duly transferred will be furnished to the buyer for each animal after payment has been made.

### ***Health:***

All animals in the sale have met all necessary health requirements.

### ***Guarantee:***

Each animal becomes the purchaser's risk immediately after the animal is sold. All animals in this sale will be sold under the terms and guarantees set forth by the applicable breed association with regards to health, freedom from defects and from both reproductive and specific genetic unsoundness.

### ***Liabilities:***

All persons attend the sale at their own risk. The sellers, facility owner, auctioneer and sale manager assume no liability, legal or otherwise, for any accidents that occur. It is understood that T Bar C Cattle Co. Ltd. is acting only as a medium between buyer and seller and is not responsible for any failure on the part of either party to live up to his obligations. Neither does T Bar C Cattle Co. Ltd. assume any financial obligations to collect or enforce collection of any monies between parties and any legal action that may in exceptional cases be taken must be between the buyer and the seller. T Bar C Cattle Co. Ltd. assumes no responsibility for any credit extended by the seller to the buyer. The buyer must look to the seller for fulfillment of all guarantees and representations made here under.

### ***Delivery:***

Every assistance will be given in getting your purchases home. Each animal becomes the risk of the purchaser as soon as sold.

### ***Phone, Mail, Wire Bids:***

Bidders unable to attend the sale may phone, wire or mail their bids and instructions to the sale manager, auctioneer or special representatives. Bids must be received in sufficient time prior to the sale.

### ***Insurance:***

Agents will be in attendance to insure your purchases. We strongly recommend that insurance is purchased for full value.

### ***Errors:***

All announcements at sale time, written or oral, supercede any written material in the catalogue.

**Return Undeliverable  
Canadian Addresses To:**

**T Bar C Cattle Co. Ltd.  
4-3342 Millar Ave.  
Saskatoon, SK S7K 7G9**

