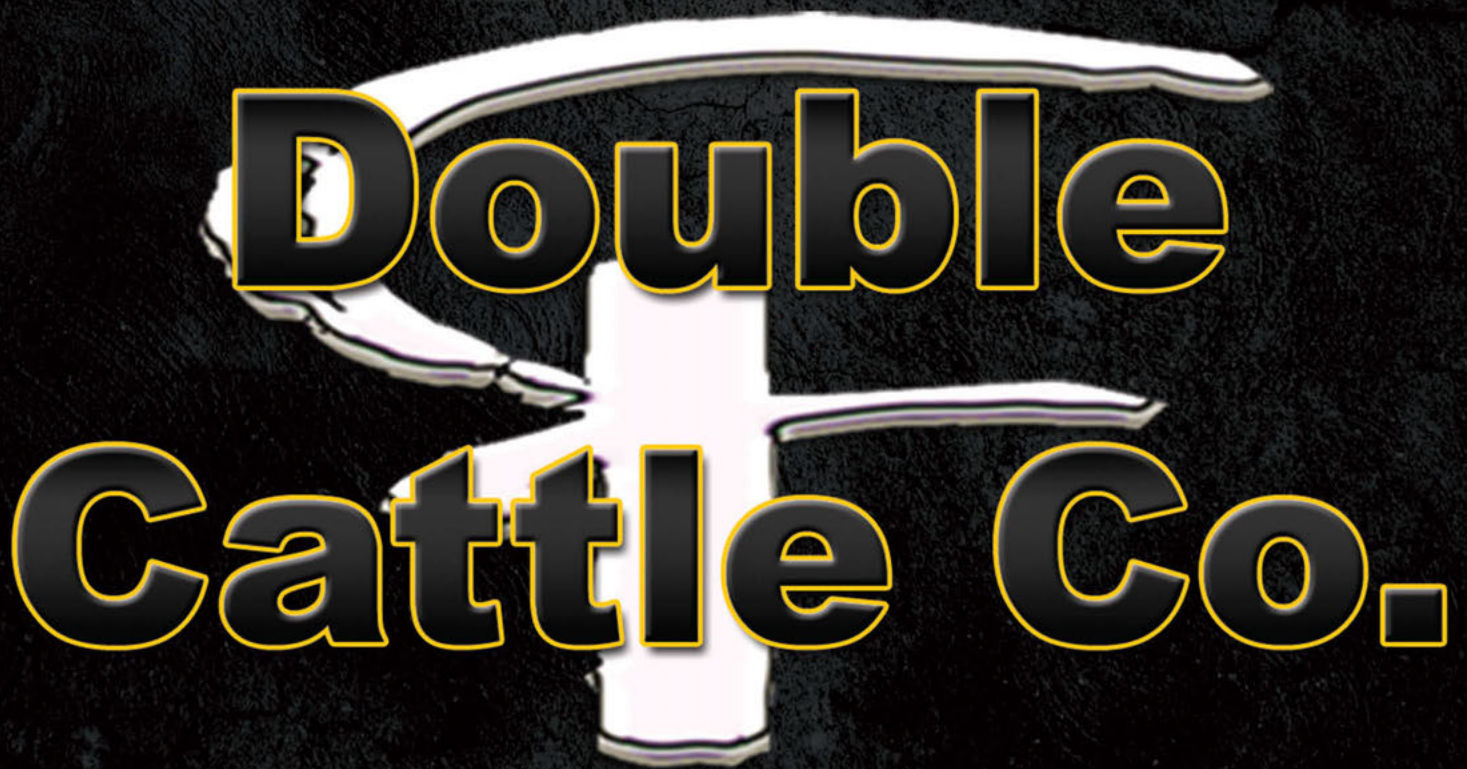


DOUBLE 'F' CATTLE CO.

7th Annual Bull Sale



Wednesday, March 30, 2016 - 2:00 pm
HEARTLAND LIVESTOCK, PRINCE ALBERT, SK



Our family would like to extend a personal invitation to each of you to attend our 7th annual bull sale. It has been another exciting year in the cattle industry with high prices and no end in sight. Now is the time to select a bull that will go out and help you be successful. At Double 'F', we have worked hard to produce stock that is sound, efficient, uniform, predictable and has longevity. As you page through the catalogue, we think you will see that we are succeeding!!

We are careful not to push our bulls because as we want them to go out and work for you. The bulls are fed a MASTERFEEDS econo-grow pellet until January that allows them to grow at their own rate. After January, the bulls then continue with a MASTERFEEDS bull ration pellet. This has been very successful for us in getting each bull to meet its full potential.



We invite you to take a good look at our catalogue and find a bull that is right for you. If you need assistance with your selection we are more than willing to help find the bull that fits your needs. Our aim is to have satisfied customers. With the many bulls that are sold each spring, thank you for taking interest in our program. If you require more information please contact us. You are always welcome to view our cattle anytime.

See you on March 30 for lunch at 12:00 noon and the sale to follow at 2:00 PM.

Kelly, Ang, Garret & Jacob Feige

Parkside, SK
 (306) 747-2376
 (306) 747-7498



This 7th annual bull sale, heralds an exciting and powerful lineup of futuristic, herd changing sires for your appraisal. Headlined by the National Champion Intermediate Bull Calf, the pen is packed full of thick, rugged, performance bulls that will fit any and all types of breeding operations. Selected from the top of the 2015 calf crop, these bulls come to you with an added value bonus.... a large highly maternal cow herd of mothers that are uniform in body, udder and phenotype... a factor which is critical in the decade to follow as we restock the beef pastures of North America.

As the livestock industry enjoys a strong market, we must always realize that there is no substitute for quality... selecting top quality sires gives you more at the pay window when you market your calves, but since half the calf crop is female, you benefit by adding new, fresh, predictable genetics from a breeding operation which is three generations deep to your replacement pastures... a benefit for the next decade. For those who are searching to add highly maternal based replacement heifers into a program, plan to be with us at Heartland.

We hope to see you on March 30th for a great group of Black Angus breeding stock... come early, view the offering and be guests for a presale luncheon. Feel free to stop at the farm any time prior the sale... see the bulls.... their mothers and their sires... Kelly will be pleased to assist you in filling your requirements.

If any of us at T Bar C, may be of assistance prior the sale or sale day, do not hesitate to give us a call and we would be pleased to assist you with your selections.

Chris Poley
 306-220-5006



Special Thank You to REMCON for purchasing the boy's 4-H steers last year.

Double 'F' Cattle Co.

7th Annual Bull Sale

Wednesday, March 30, 2016 • 2:00 PM

Heartland Livestock, Prince Albert, SK

Sale Location - South on Highway #2, turn east on the Elevator Road (across from Flaman's)

Join us for lunch at 12:00 Noon Sale Day

Sale Staff...

Auctioneer...

Chris Poley (306) 220-5006

Sale Day Phones...

Ben Wright - Ringman (519) 374-3335

Randy Ames - Ringman (306) 867-3262

Kelly Feige (306) 747-7498

Roger Kostron (306) 491-9096

Buyer Representatives...

Roger Kostron (306) 491-9096

Glen Smith (306) 960-4732

Brennin Jack (306) 981-2430

Accommodations...

Super 8 Motel (306) 953-0088

Travelodge (306) 764-6441

Holiday Inn (306) 730-1000

Prince Albert Inn (306) 922-5000

Coffee & Donuts

Sponsored By:

Affinity Credit Union, Shellbrook, SK

Buyer's Draw

Sponsored By:


Masterfeeds

Roger Kostron
Account Sales Specialist



2435 Schuyler Street,
Saskatoon, SK Canada S7M 5H4
Bus: (306) 384-2144 Cell: (306) 491-9096
Toll Free: 1-888-681-4111 Fax: (306) 384-7288
E-mail: rkostron@masterfeeds.com
www.masterfeeds.com

Your money
just got smarter.



Tricia Bell B.Comm
AGRICULTURE ACCOUNT MANAGER

p: 306.747.6302 f: 306.747.3161
tricia.bell@affinitycu.ca

31 Main St., Box 204, Shellbrook, Sask S0J 2E0
TeleService* 306.934.4000 866.863.6237

affinitycu.ca

On Offer...

49 • Black Angus Yearling Bulls

An Elite Group of Replacement Females

Breeding Guarantee...

All bulls will be semen evaluated by a certified veterinarian. We fully guarantee all bulls sold 100%.

Delivery...

Free delivery up to 250 miles or receive \$100.00/bull discount for taking your bull home sale day!

Wintering...

You can send your purchase(s) back to the farm and pick them up at your convenience by April 15, 2016. Bulls will be kept for a cost of \$3.00/head/day. Bulls returning to Double 'F' must be insured.

Insurance...

Will be available sale day. All bulls returning to Double 'F' must be insured.

Sight Unseen Purchase Program...

For those of you who cannot attend the sale, we offer a sight unseen purchase program. Call any one of the sales staff and they will recommend suitable bulls. Your order will be handled with strict confidence.

Females...

Heifers are to be picked up and paid for sale day.

To Our Cattlemen Friends...

In order to do what we do we require the help of some very special people. The advertising included in our catalogue are businesses that provide us with great service and we hope you will support them. Thank-You!

Pictures and Videos...

Pictures and videos taken at the beginning of February.

Videos...

Videos will be available at www.doublefcattle.com and www.buyagro.com.

Reference Sires



NORSEMAN KODIAK 5'11



HF BINGHAMTON 36Z



NRA PIONEER 34Z



K-COW WINDMILL 1Z



MJT TOUCH DOWN 488Z



MERIT BIG DAWG 3049A

Double 'F' Cattle Co. • Reference Sires

J & R Meats
James & Rose Grypiuk
 Box 1116, Shellbrook, SK
Phone: 306-747-2919
 "For all your retail & custom needs"
 13 km west & 3 km north of Shellbrook, SK

STOCKMENS INSURANCE
 LLOYD'S CORRESPONDENTS
 Agent:
Larry Toner
 Kelfield, Saskatchewan
 Phone (306) 932-4866 Cell: (306) 834-7652
 Email: larrytoner@xplomet.com
 http://stockmens.xbar9.ca

1

DFCC 1Z Capital One 30C

1847843

DFCC 30C

01/02/2015

Double 'F' Cattle Co. • Yearling Bulls

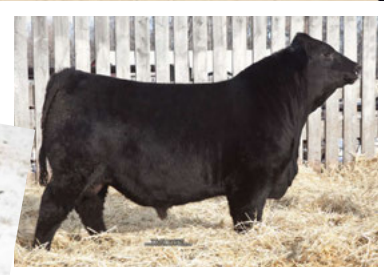


3T's progeny in Pictures

Tyler's Photos



3T pictured at 9 years of age



K-COW WINDMILL 67W
K-COW WINDMILL 1Z 166395 I
 DXB 1299J RUBY 1P

LLB FULLBACK 27M
CFS QUEENETTE 3T 1413197
 SANDY BAR QUEENETTE 404J

| BW | ADJ 205 | ADJ 365 | EPD | BW | WW | YW | Milk | TM | CE | MCE |
|----|---------|---------|-----|-----|----|----|------|----|------|-----|
| 89 | 903 | 1411 | | 4.1 | 44 | 66 | 21 | 45 | -2.0 | 4.0 |



For those that have been following the DOUBLE 'F' program Jacob's cow 3T needs no introduction. Now for those who are new to our program, let's take a minute to talk about CFS QUEENETTE 3T. Jacob purchased this cow out of CLARK'S Dispersal sale and what a good purchase it was!!! This powerful moderate cow has produced a HERD SIRE every year prior and this year is no exception. Her bulls are working at such prominent cattle operations as MJT CATTLE CO., NIELSON LAND & CATTLE, LEASK COLONY and LITTLE WILLOW CREEK.

3T's calves have also done well on the show road every fall, capturing BULL CALF CHAMPION BANNERS every where they went.

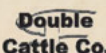
BUT3T's bull this year may be the best one yet.....DFCC 1Z CAPITAL ONE 30C!!!!

CAPITAL ONE's sire K-COW WINDMILL 1Z has left us with an exceptional crop of calves as you can see by the sale offering. He has consistently stamps his bulls with power and his females with style.

DFCC 1Z CAPITAL ONE 30C was named **2015 NATIONAL INTERMEDIATE BULL CALF CHAMPION** this fall in Lloydminster. His style, length, deep rib, square hip, big foot, top and overall soundness plus character through his front and head make him a bull that everyone has to admire. Also check out, CAPITAL ONE's pedigree as he offers fresh genetics as well! CAPITAL ONE has HERD SIRE written all over him!!!

CAPITAL ONE could be the next game changer... so if you are serious about the cattle industry, take a good honest look at DFCC 1Z CAPITAL ONE 30C and ask yourself... WHAT'S IN YOUR PASTURE?

SELLING FULL POSSESSION AND 1/2 SEMEN INTEREST



Sale Day Phone Number: Kelly (306) 747-7498

videos available at www.doublefcattle.com & www.buyagro.com

2**DFCC 1Z Carlos 5C**

1847830

DFCC 5C

20/01/2015



K-COW WINDMILL 67W
K-COW WINDMILL 1Z 1663951
 DXB 1299J RUBY 1P

CUDLOBE RAINMAKER 49L
LODGE LAURA 66P 1200136
 RON'S DELEGATE LAURA 36B

| BW | ADJ 205 | ADJ 365 | EPD | BW | WW | YW | Milk | TM | CE | MCE |
|----|---------|---------|------|----|----|----|------|-----|-----|-----|
| 70 | 823 | 1446 | -1.5 | 35 | 69 | 21 | 42 | 8.0 | 7.0 | |

A super soggy bull that has hair, middle and performance. 5C's mother is 12 years old and brings in a good one every year. Our K-COW bull has bred really well for us with sweet females and stout bulls. Half brother to our 2015 National Intermediate Bull Calf Champion.

3**DFCC 5Y Captain Crunch 11C**

1847833

DFCC 11C

23/01/2015



SOO LINE KODIAK 9172
NORSEMAN KODIAK 5'11 1645936
 NORSEMAN QUEEN RUTH 42'09

LEACHMAN RIGHT TIME AMF DMF
DBRL RT TIBBIE 15U 1459744
 HF TIBBIE 165L

| BW | ADJ 205 | ADJ 365 | EPD | BW | WW | YW | Milk | TM | CE | MCE |
|----|---------|---------|-----|----|----|----|------|------|-----|-----|
| 88 | 874 | 1483 | 3.8 | 51 | 90 | 21 | 48 | -1.0 | 7.0 | |

A tank of a bull here!! He will make an excellent cow bull with his performance. 11C has middle, hair and shape. His full brother sold to NORSEMAN FARMS last year.

4**DFCC 488Z Cash 21C**

1878059

DFCC 21C

26/01/2015



20/20 TOUCHDOWN 20X
MJT TOUCH DOWN 488Z 1717652
 MJT MARIE 710U

NRA ABERDEEN 5Y
DFCC 5Y ALANA 8A 1721154
 LODGE DUCHESS 51Y

| BW | ADJ 205 | ADJ 365 | EPD | BW | WW | YW | Milk | TM | CE | MCE |
|----|---------|---------|-----|----|----|----|------|-----|-----|-----|
| 78 | 831 | 1390 | 2.4 | 46 | 71 | 20 | 44 | 4.0 | 9.0 | |

A bull, with shape and thickness that will work well on heifers. 21C is out of a first calf heifer and has a low birth weight and a great weaning weight.

5

1869784

DFCC 12 Colt 45 7C
DFCC 7C 21/01/2015



Tyler Harris Photography.com

K-COW WINDMILL 67W
K-COW WINDMILL 1Z 166395 I
DXB 1299J RUBY 1P

TC GRID TOPPER 355 AMF NHF CAF DDF
TRIPLE L PRIDE 7T 1405208
TRIPLE L PRIDE 19M

| BW | ADJ 205 | ADJ 365 | EPD | BW | WW | YW | Milk | TM | CE | MCE |
|----|---------|---------|-----|-----|----|----|------|----|-----|-----|
| 86 | 827 | 1436 | | 3.7 | 52 | 94 | 16 | 44 | 0.0 | 7.0 |

This bull checks all the boxes... length, presence, performance, testicle, soundness, muscle, hair and top! His dam is a top producing Triple L Grid Topper cow. 7C's maternal brother working at SOUTHVIEW RANCH. If you want a HERD SIRE, with a different pedigree, CHECK him out!!!!

6

1878058

DFCC 488Z Cadet 23C
DFCC 23C 28/01/2015

20/20 TOUCHDOWN 20X
MJT TOUCH DOWN 488Z 1717652
MJT MARIE 710U

HF HEMI 176W
DFCC 176W ADDIE 5A 1721001
LODGE QUEEN MOTHER 29U

| BW | ADJ 205 | ADJ 365 | EPD | BW | WW | YW | Milk | TM | CE | MCE |
|----|---------|---------|-----|-----|----|----|------|----|-----|-----|
| 82 | 763 | 1385 | | 3.2 | 43 | 76 | 19 | 41 | 2.0 | 5.0 |

Out of a HEMI first calf heifer. These HEMI females have femininity, soundness and perfect tidy udders and are hard to fault. With 23C's style, shape and pedigree, he will produce excellent females.



Tyler Harris Photography.com

7

1847841

DFCC 12 Columbus 26C
DFCC 26C 30/01/2015

K-COW WINDMILL 67W
K-COW WINDMILL 1Z 166395 I
DXB 1299J RUBY 1P

CUDLOBE MIDLAND 21R
LODGE DUCHESS 42T 1373666
LODGE DUCHESS 60P

| BW | ADJ 205 | ADJ 365 | EPD | BW | WW | YW | Milk | TM | CE | MCE |
|----|---------|---------|-----|-----|----|----|------|----|-----|-----|
| 91 | 846 | 1405 | | 3.1 | 48 | 78 | 22 | 47 | 0.0 | 5.0 |

26C is a larger framed bull that does not give up length, top, shape and performance.



Tyler Harris Photography.com

8**DFCC 3049A Cadillac 29C**

1847842

DFCC 29C

01/02/2015



BARE-L IRON WILL 32Y
MERIT BIG DAWG 3049A 1745887
 MERIT PRIDE 865 I

NORSEMAN FRONTIER 2'07
NORSEMAN OLIVIA 18'11 1645949
 JL NET WORTH 07096

| BW | ADJ 205 | ADJ 365 | EPD | BW | WW | YW | Milk | TM | CE | MCE |
|----|---------|---------|-----|----|----|----|------|-----|-----|-----|
| 85 | 817 | 1503 | 3.1 | 45 | 91 | 26 | 50 | 2.0 | 7.0 | |

Here is a tanky BIG DAWG bull that has tonnes of bone, hair, muscle and soundness. BIG DAWG does not need any introduction as he made many friends wherever he went on the show road. BIG DAWG calves are very exciting and we expect them to be a sale highlight!! Unfortunately, we lost BIG DAWG, so there won't be many opportunities to purchase these exceptional genetics. Don't miss out!!

9**DFCC 36Z Caesar 31C**

1847844

DFCC 31C

01/02/2015



CONNEALY CONSENSUS 7229 CAF DDF AMF NHF
HF BINGHAMTON 36Z 1683810
 HF BETTY 164W

BWB VENTURE 60P
DFCC 60P MARIA 34U 1462290
 EGGEN BIG SKY 16K 32N

| BW | ADJ 205 | ADJ 365 | EPD | BW | WW | YW | Milk | TM | CE | MCE |
|----|---------|---------|-----|----|----|----|------|-----|-----|-----|
| 86 | 742 | 1465 | 1.9 | 34 | 72 | 22 | 39 | 5.0 | 5.0 | |

31C will be popular on sale day. He is a thick bull out of our HAMILTON CONSENSUS bull. CONSENSUS has left us a great set of moderate calves with loads of top and muscle.

10**DFCC 36Z Corvette 32C**

1847845

DFCC 32C

01/02/2015



CONNEALY CONSENSUS 7229 CAF DDF AMF NHF
HF BINGHAMTON 36Z 1683810
 HF BETTY 164W

DMM FAME 15M
EGGEN FAME MISS 46P 1215291
 ANH GLENELLA 16K

| BW | ADJ 205 | ADJ 365 | EPD | BW | WW | YW | Milk | TM | CE | MCE |
|----|---------|---------|-----|----|----|----|------|-----|-----|-----|
| 83 | 802 | 1577 | 1.4 | 37 | 84 | 16 | 35 | 6.0 | 6.0 | |

Another CONSENSUS son that is stamped like the rest - length, hair and muscle. If you are looking for performance check out the birth weight and weaning weight here.

11

DFCC 5Y Cargo 34C

1847850 DFCC 34C 02/02/2015

SOO LINE KODIAK 9172
 NORSEMAN KODIAK 5'11 1645936
 NORSEMAN QUEEN RUTH 42'09

EASTONDALE BREAK AWAY 32'07
 DFCC 32T NIKKI IY 1612687
 CFS LADY 87P

| BW | ADJ 205 | ADJ 365 | EPD | BW | WW | YW | Milk | TM | CE | MCE |
|----|---------|---------|-----|-----|----|----|------|----|-----|-----|
| 85 | 837 | 1472 | | 2.5 | 53 | 94 | 21 | 47 | 1.0 | 5.0 |

A solid KODIAK grandson that has lots of middle and quarter. His dam is an excellent BREAKAWAY cow.



Tyler Harris Photography.com

12

DFCC 3049A Convoy 35C

1847851 DFCC 35C 02/02/2015

BARE-L IRON WILL 32Y
 MERIT BIG DAWG 3049A 1745887
 MERIT PRIDE 865 I

DURALTA 4T TURBO 71X
 DFCC 71X SAGE 50Z 1697775
 EGGEN BIG SKY MISS 50P

| BW | ADJ 205 | ADJ 365 | EPD | BW | WW | YW | Milk | TM | CE | MCE |
|----|---------|---------|-----|-----|----|----|------|----|-----|-----|
| 85 | 748 | 1370 | | 3.5 | 40 | 77 | 16 | 34 | 3.0 | 7.0 |

A moderate bull that puts it all together - thickness, length and top. What makes this bull a sure thing is his BIG DAWG sire and TURBO dam...this combination can't miss!!!



Tyler Harris Photography.com

13

DFCC 5Y Cooper 41C

1847855 DFCC 41C 03/02/2015

SOO LINE KODIAK 9172
 NORSEMAN KODIAK 5'11 1645936
 NORSEMAN QUEEN RUTH 42'09

EASTONDALE BREAK AWAY 32'07
 DFCC 32T FOREVER 10X 1568743
 DFCC 60P PRECIOUS 48U

| BW | ADJ 205 | ADJ 365 | EPD | BW | WW | YW | Milk | TM | CE | MCE |
|----|---------|---------|-----|-----|----|----|------|----|-----|-----|
| 85 | 773 | 1433 | | 2.4 | 44 | 83 | 17 | 40 | 1.0 | 4.0 |

A stylish KODIAK son with muscle, middle, and length.



Tyler Harris Photography.com

14

DFCC 36Z Chico 42C

1847856 DFCC 42C 03/02/2015

CONNELLY CONSENSUS 7229 CAF DDF AMF NHF
 HF BINGHAMTON 36Z 1683810
 HF BETTY 164W

MJT ESSOTERIC EXTRA 16K
 EGGEN BIG SKY MISS 6P 1215284
 ANH ENCHANTRESS 1K

| BW | ADJ 205 | ADJ 365 | EPD | BW | WW | YW | Milk | TM | CE | MCE |
|----|---------|---------|-----|-----|----|----|------|----|-----|-----|
| 85 | 757 | 1417 | | 2.8 | 31 | 65 | 20 | 35 | 4.0 | 4.0 |

This BINGHAMTON son exhibits smoothness, length and butt.



Tyler Harris Photography.com

15

1878054 **DFCC 488Z Czar 51C**
DFCC 51C 04/02/2015

20/20 TOUCHDOWN 20X
MJT TOUCH DOWN 488Z 1717652
MJT MARIE 710U

YOUNG DALE XPORT 5X
DFCC 5X ASHLEY 63A 1722301
EGGEN BIG SKY 16K MISS 79M

| BW | ADJ 205 | ADJ 365 | EPD | BW | WW | YW | Milk | TM | CE | MCE |
|----|---------|---------|-----|-----|----|----|------|----|-----|-----|
| 76 | 797 | 1457 | | 2.6 | 37 | 71 | 21 | 41 | 3.0 | 6.0 |

Need a heifer bull...HERE HE IS!! A long, smooth calf with tremendous muscle. This bull will calf with ease but not give up performance.



Tyler Harris Photography.com

16

1847866 **DFCC 12 Cruiser 54C**
DFCC 54C 05/02/2015

K-COW WINDMILL 67W
K-COW WINDMILL 1Z 1663951
DXB 1299J RUBY 1P

GBT RANGER 3L
CFS LADY 87P 1239795
CFS LADY 62H

| BW | ADJ 205 | ADJ 365 | EPD | BW | WW | YW | Milk | TM | CE | MCE |
|----|---------|---------|-----|-----|----|----|------|----|-----|-----|
| 81 | 831 | 1415 | | 3.3 | 46 | 77 | 19 | 43 | 0.0 | 4.0 |

We are really impressed with the consistency of the K-COW calves. They all have thickness, length, top, structure, and hair. 54C has all of these and more. Dam is mother of a high seller at SANDY BAR dispersal.



Tyler Harris Photography.com

17

1847867 **DFCC 3049A Cowboy 57C**
DFCC 57C 05/02/2015

BAR-E-L IRON WILL 32Y
MERIT BIG DAWG 3049A 1745887
MERIT PRIDE 865 I

YOUNG DALE HERO 4R
CFS BLACKBIRD 85U 1454437
VBR BLACKBIRD 246H

| BW | ADJ 205 | ADJ 365 | EPD | BW | WW | YW | Milk | TM | CE | MCE |
|----|---------|---------|-----|-----|----|----|------|----|-----|-----|
| 80 | 821 | 1392 | | 2.5 | 38 | 65 | 16 | 36 | 3.0 | 6.0 |

A really interesting bull that gets better and better every day! Style ...performance...soundness here!!!



Tyler Harris Photography.com

18

DFCC 488Z **Cosmo** 58C

1878053

DFCC 58C

05/02/2015



Tyler Harris Photography.com

20/20 TOUCHDOWN 20X
MJT TOUCH DOWN 488Z 1717652
 MJT MARIE 710U

DURALTA 4T TURBO 71X
DFCC 71X ANN 71A 1722307
 DFCC 32T FOREVER 9W

| BW | ADJ 205 | ADJ 365 | EPD | BW | WW | YW | Milk | TM | CE | MCE |
|----|---------|---------|-----|-----|----|----|------|----|-----|-----|
| 81 | 826 | 1512 | | 4.0 | 42 | 82 | 20 | 41 | 1.0 | 6.0 |

An excellent choice for a heifer bull here. A heifer's first calf that has good shape and rib.

19

DFCC 3049A **Challenger** 60C

1847870

DFCC 60C

06/02/2015

BAR-E-L IRON WILL 32Y
MERIT BIG DAWG 3049A 1745887
 MERIT PRIDE 865 I

CUDLOBE MIDLAND 21R
LODGE DUCHESS 51Y 1601649
 LODGE DUCHESS 1J

| BW | ADJ 205 | ADJ 365 | EPD | BW | WW | YW | Milk | TM | CE | MCE |
|----|---------|---------|-----|-----|----|----|------|----|-----|-----|
| 80 | 745 | 1342 | | 2.3 | 41 | 71 | 17 | 37 | 3.0 | 9.0 |

A low birth weight BIG DAWG calf with a functional dam.



Tyler Harris Photography.com

20

DFCC 36Z **Clyne** 61C

1847872

DFCC 61C

06/02/2015

CONNELLY CONSENSUS 7229 CAF DDF AMF NHF
HF BINGHAMTON 36Z 1683810
 HF BETTY 164W

SANDY BAR BRAVE HEART 48M
CFS LADY 16R 1299341
 CFS LADY 28F

| BW | ADJ 205 | ADJ 365 | EPD | BW | WW | YW | Milk | TM | CE | MCE |
|----|---------|---------|-----|-----|----|----|------|----|-----|-----|
| 80 | 781 | 1352 | | 1.8 | 34 | 63 | 19 | 36 | 3.5 | 5.5 |

Super thickness, hair and quarter.



Tyler Harris Photography.com

21

1847873

DFCC 36Z Cruise 62C

DFCC 62C

06/02/2015

CONNELLY CONSENSUS 7229 CAF DDF AMF NHF
 HF BINGHAMTON 36Z 1683810
 HF BETTY 164W

SANDY BAR BRAVE HEART 48M
 CFS LADY 16R 1299341
 CFS LADY 28F

| BW | ADJ 205 | ADJ 365 | EPD | BW | WW | YW | Milk | TM | CE | MCE |
|----|---------|---------|-----|-----|----|----|------|----|-----|-----|
| 70 | 805 | 1364 | | 1.8 | 34 | 63 | 19 | 36 | 3.5 | 5.5 |

Like his brother...tanky. Don't usually get excited about twins...but check these guys out!!!

22

1847875

DFCC 34Z Colt 67C

DFCC 67C

07/02/2015

S A V PIONEER 7301 AMF NHF CAF DDF
 NRA PIONEER 34Z 1684231
 LODGE LOLA 4M AMF NHF

HF SPREAD 37K
 MJT LADY BIRD 11S 1335658
 MJT LADYBIRD 162M

| BW | ADJ 205 | ADJ 365 | EPD | BW | WW | YW | Milk | TM | CE | MCE |
|----|---------|---------|-----|-----|----|----|------|----|-----|-----|
| 88 | 802 | 1450 | | 3.2 | 42 | 73 | 18 | 38 | 3.0 | 8.0 |

Powerhouse of a bull !!!! 67C has all the right characteristics plus strong maternal power... you will want to keep every female.

23

1847876

DFCC 36Z Cole 68C

DFCC 68C

07/02/2015

CONNELLY CONSENSUS 7229 CAF DDF AMF NHF
 HF BINGHAMTON 36Z 1683810
 HF BETTY 164W

DMM DYNASTY 03G
 EGGEN 03G MISS 39N 1188489
 RON'S BELLE 40

| BW | ADJ 205 | ADJ 365 | EPD | BW | WW | YW | Milk | TM | CE | MCE |
|----|---------|---------|-----|-----|----|----|------|----|-----|-----|
| 80 | 767 | 1453 | | 1.8 | 34 | 67 | 20 | 36 | 5.0 | 4.0 |

A big strapping CONSENSUS bull from a powerful 13 year old dam. If you are looking for longevity and replacements. This is it here!!!

24

1847884

DFCC 3049A Circuit 76C

DFCC 76C

08/02/2015

BARE-L IRON WILL 32Y
 MERIT BIG DAWG 3049A 1745887
 MERIT PRIDE 8651

EASTONDALE BREAK AWAY 32'07
 DFCC 32T FOREVER 2Z 1662925
 CFS BELLE 18R

| BW | ADJ 205 | ADJ 365 | EPD | BW | WW | YW | Milk | TM | CE | MCE |
|----|---------|---------|-----|-----|----|----|------|----|-----|-----|
| 80 | 772 | 1445 | | 2.4 | 41 | 83 | 18 | 39 | 3.0 | 7.0 |

Another stylish BIG DAWG son with a ton of rib and shape. One of my favorite cows because of her flawless udder and structure. This bull has a stacked pedigree.



Tyler Harris Photography.com

25

DFCC 34Z **Coal** 78C

1869785

DFCC 78C

08/02/2015



S A V PIONEER 7301 AMF NHF CAF DDF
NRA PIONEER 34Z 1684231
 LODGE LOLA 4M AMF NHF

CUDLOBE RAINMAKER 49L
LODGE FLO 69P 1200138
 HILOW FLO 47D

| BW | ADJ 205 | ADJ 365 | E P D | BW | WW | YW | Milk | TM | CE | MCE |
|----|---------|---------|-------|-----|----|----|------|----|-----|-----|
| 88 | 858 | 1569 | | 2.8 | 47 | 84 | 26 | 48 | 0.0 | 2.0 |

The best word to describe 78C is TANK. His stoutness, rib and shape make him a powerful bull prospect.

26

DFCC 36Z **Camaro** 80C

1847886

DFCC 80C

09/02/2015



CONNEALY CONSENSUS 7229 CAF DDF AMF NHF
HF BINGHAMTON 36Z 1683810
 HF BETTY 164W

HF HEMI 176W
DFCC 176W MISS 8Y 1618443
 EGGEN FAME MISS 31P

| BW | ADJ 205 | ADJ 365 | E P D | BW | WW | YW | Milk | TM | CE | MCE |
|----|---------|---------|-------|-----|----|----|------|----|-----|-----|
| 80 | 797 | 1457 | | 2.0 | 47 | 85 | 19 | 44 | 5.0 | 5.0 |

80C possesses all the qualities to make him a great HERD SIRE. He has top, muscle expression, soundness and stoutness but what makes him extra special is his dam who is an outstanding HEMI daughter that never disappoints! ARTESIAN FARMS purchased a high selling maternal brother.

videos available at www.doublefcattle.com & www.buyagro.com

27

DFCC 36Z **Checker 81C**

1847887

DFCC 81C

09/02/2015




CONNEALY CONSENSUS 7229 CAF DDF AMF NHF
 HF BINGHAMTON 36Z 1683810
 HF BETTY 164W

SCA IMAGE MAKER 08N
 DBRL IM BLACKBIRD 94U 1459848
 SANDY BAR BLACKBIRD 200N

| BW | ADJ 205 | ADJ 365 | EPD | BW | WW | YW | Milk | TM | CE | MCE |
|----|---------|---------|-----|-----|----|----|------|----|-----|-----|
| 83 | 799 | 1396 | | 1.6 | 40 | 67 | 25 | 46 | 6.0 | 6.0 |

A big topped fellow here... lots of spine and shape. Check out 81C's pedigree...with genetics like this you can't miss! HERD SIRE here! The only thing that comes up short on this bull is his tail!!



JEFFRAE ROTHWELL, Dip. Agr.
 Branch Manager
 Shellbrook Branch

The Prince Albert
 Co-operative
 Association
 Limited

P. O. Box 97
 Shellbrook, SK
 S0J 2E0 Canada
 jeff.rothwell@pacoop.ca

Business (306) 747-2122
 Fax (306) 747-2151
 Cell (306) 747-7361
 www.princealbertcoop.ca

28

DFCC 34Z **Checker 84C**

1847888

DFCC 84C

10/02/2015

S A V PIONEER 7301 AMF NHF CAF DDF
 NRA PIONEER 34Z 1684231
 LODGE LOLA 4M AMF NHF

SOUTHLAND OLD SKOOL 33T
 DFCC 33T ROXY 28Y 1612676
 EGGEN BIG SKY MISS 43N

| BW | ADJ 205 | ADJ 365 | EPD | BW | WW | YW | Milk | TM | CE | MCE |
|----|---------|---------|-----|-----|----|----|------|----|-----|-----|
| 74 | 843 | 1338 | | 2.1 | 45 | 76 | 22 | 45 | 3.5 | 7.0 |

A low birth weight bull with great shape. CHECKER would make a sure fire heifer bull.

29

DFCC 34Z **Calloway 87C**

1847893

DFCC 87C

11/02/2015

S A V PIONEER 7301 AMF NHF CAF DDF
 NRA PIONEER 34Z 1684231
 LODGE LOLA 4M AMF NHF

EASTONDALE BREAK AWAY 32'07
 DFCC 32T HOT LADY E.T. 22Y 1765747
 EGGEN BIG SKY 16K MISS 101M

| BW | ADJ 205 | ADJ 365 | EPD | BW | WW | YW | Milk | TM | CE | MCE |
|----|---------|---------|-----|-----|----|----|------|----|-----|-----|
| 78 | 723 | 1371 | | 0.5 | 34 | 64 | 25 | 43 | 6.0 | 7.0 |

87C will make a great heifer bull. With all the maternal power here, you won't want to part with the females.

30

DFCC 488Z **Class 88C**

1890925

DFCC 88C

11/02/2015

20/20 TOUCHDOWN 20X
 MJT TOUCH DOWN 488Z 1717652
 MJT MARIE 710U

YOUNG DALE XPORT 5X
 DFCC 5X AIR 94A 1722608
 BEVERLY HILLS DINTER PRIDE 833

| BW | ACT 205 | ACT 365 | EPD | BW | WW | YW | Milk | TM | CE | MCE |
|----|---------|---------|-----|-----|----|----|------|----|-----|-----|
| 80 | 760 | 1270 | | 2.8 | 40 | 62 | 21 | 40 | 3.5 | 6.5 |

This first calf heifer's bull has tremendous smoothness and shape. We have used our MJT bull on heifers for the past two years and have had excellent results. Any of the MJT sired bulls in our catalog will work on heifers.



31

DFCC 3049A Clevis 90C

1847894 DFCC 90C 11/02/2015

BAR-E-L IRON WILL 32Y
 MERIT BIG DAWG 3049A 1745887
 MERIT PRIDE 865 I

ANKONIAN WERNER WILD FIRE 96 AMF NHF CAF DDF
 LODGE COUNTESS 50W 1489789
 LODGE COUNTESS 2J

| BW | ADJ 205 | ADJ 365 | EPD | BW | WW | YW | Milk | TM | CE | MCE |
|----|---------|---------|-----|-----|----|----|------|----|-----|-----|
| 91 | 806 | 1415 | | 4.0 | 46 | 80 | 21 | 44 | 1.0 | 5.0 |

These BIG DAWG calves are like 'peas in a pod' and 90C is no exception. His stoutness, muscle, shape, soundness and style mirrors the other BIG DAWG sons. 90C's dam is an excellent uddered WILD FIRE daughter. We think so much of this bull we thought about keeping him. Maternal brother working for JAY ROBERTSON in Ontario. Don't miss out!!!



32

DFCC 5Y Corey 93C

1847895 DFCC 93C 12/02/2015

SOO LINE KODIAK 9172
 NORSEMAN KODIAK 5'11 1645936
 NORSEMAN QUEEN RUTH 42'09

YOUNG DALE XPORT 5X
 DFCC 5X POLY 92Z 1690887
 LODGE LAURA 19T

| BW | ADJ 205 | ADJ 365 | EPD | BW | WW | YW | Milk | TM | CE | MCE |
|----|---------|---------|-----|-----|----|----|------|----|------|-----|
| 85 | 873 | 1432 | | 2.7 | 56 | 99 | 24 | 52 | -3.0 | 2.0 |

An impressive KODIAK bull.



33

DFCC 3049A Canuck 94C

1847896 DFCC 94C 13/02/2015

BAR-E-L IRON WILL 32Y
 MERIT BIG DAWG 3049A 1745887
 MERIT PRIDE 865 I

DURALTA 4T TURBO 71X
 DFCC 71X DREAM GIRL 108Z 1697782
 DFCC 32T HOT GIRL 37W

| BW | ADJ 205 | ADJ 365 | EPD | BW | WW | YW | Milk | TM | CE | MCE |
|----|---------|---------|-----|-----|----|----|------|----|-----|-----|
| 86 | 814 | 1500 | | 3.9 | 48 | 99 | 20 | 44 | 1.0 | 6.0 |

Excellent DIG DAWG son here with a unique pedigree full of foundation cows. 94C resembles his daddy so much with his thickness, shape, top, hair and over all soundness. His dam has a wicked udder and would be a top female in any herd!!





34

DFCC 34Z Carlton 95C

1847897

DFCC 95C

14/02/2015

S A V PIONEER 7301 AMF NHF CAF DDF
NRA PIONEER 34Z 1684231
 LODGE LOLA 4M AMF NHF

CUDLOBE MIDLAND 21R
LODGE LOLA 48U 1430232
 LODGE LOLA 9N

| BW | ADJ 205 | ADJ 365 | EPD | BW | WW | YW | Milk | TM | CE | MCE |
|----|---------|---------|-----|------|----|----|------|----|------|------|
| 70 | 759 | 1229 | | -1.6 | 33 | 41 | 24 | 43 | 10.0 | 11.0 |

The only way to describe this bull is **STOUT!** The dam is a favorite cow of mine that we purchased from **VALLEY LODGE FARMS** and has consistently raised top sellers in past sales. His sister is working in our herd and has continued her mother's high standards with a gorgeous udder and excellent productivity.



35

DFCC 34Z Chief 98C

1847898

DFCC 98C

15/02/2015

S A V PIONEER 7301 AMF NHF CAF DDF
NRA PIONEER 34Z 1684231
 LODGE LOLA 4M AMF NHF

MJT ESSOTERIC EXTRA 16K
EGGEN BIG SKY 16K MISS 99M 1099306
 ANH BONI GAL 20G

| BW | ADJ 205 | ADJ 365 | EPD | BW | WW | YW | Milk | TM | CE | MCE |
|----|---------|---------|-----|-----|----|----|------|----|-----|-----|
| 87 | 755 | 1365 | | 2.6 | 39 | 64 | 22 | 40 | 3.0 | 7.0 |

CHIEF is a smooth long spined bull. These **PIONEER** grandsons are the right type. **WE** have kept all the sisters in our herd. If you want replacements you need to check this guy out!



36

DFCC 5Y Chaos 100C

1847901

DFCC 100C

16/02/2015

SOO LINE KODIAK 9172
NORSEMAN KODIAK 5'11 1645936
 NORSEMAN QUEEN RUTH 42'09

EASTONDALE BREAK AWAY 32'07
DFCC 32T HOT GIRL E.T. 32Y 1643436
 EGGEN BIG SKY 16K MISS 101M

| BW | ADJ 205 | ADJ 365 | EPD | BW | WW | YW | Milk | TM | CE | MCE |
|----|---------|---------|-----|-----|----|----|------|----|-----|-----|
| 85 | 774 | 1523 | | 2.6 | 46 | 96 | 19 | 41 | 1.0 | 4.0 |

Powerful **NORSEMAN KODIAK** son... hair, rib and muscle. Dam is out of a flush from our foundation cow **IOIM** who has produced many greats... one example is the high seller **BULLSEYE** in our 1st bull sale, who is still out working.



37

DFCC 1Z Chill 101C

1847902

DFCC 101C

16/02/2015

K-COW WINDMILL 67W
K-COW WINDMILL 1Z 1663951
 DXB 1299J RUBY 1P

MJT ESSOTERIC EXTRA 16K
EGGEN BIG SKY 16K MISS 101M 1099344
 ANH ENCHANTRESS 1K

| BW | ADJ 205 | ADJ 365 | EPD | BW | WW | YW | Milk | TM | CE | MCE |
|----|---------|---------|-----|-----|----|----|------|----|------|-----|
| 87 | 803 | 1374 | | 3.6 | 34 | 60 | 21 | 38 | -1.0 | 2.0 |

Son of one of our foundation cows at **Double 'F' IOIM**. This calf has a lot going for him with his stoutness, hair, testicle and top but what makes him extra special is the great cow family.

38

DFCC 34Z Carlton 102C

1847903 DFCC 102C 16/02/2015

S A V PIONEER 7301 AMF NHF CAF DDF
 NRA PIONEER 34Z 1684231
 LODGE LOLA 4M AMF NHF

20/20 SHOW OFF 29R
 MJT ESSOTERIC BLACKBIRD 600T 1417267
 MJT ESSOTERIC BLACKBIRD 12K

| BW | ADJ 205 | ADJ 365 | E P D | BW | WW | YW | Milk | TM | CE | MCE |
|----|---------|---------|-------|-----|----|----|------|----|-----|-----|
| 79 | 766 | 1363 | | 1.7 | 37 | 57 | 22 | 42 | 4.0 | 8.0 |

102C's dam is a top producing cow that we purchased at MJT. She has given us 4H champions and high sellers. Here is just another powerhouse offspring of hers. CARLTON has a low birth weight but still has great thickness, quarter and butt.



Tyler Harris Photography.com

39

DFCC 34Z Chevy 104C

1847905 DFCC 104C 17/02/2015

S A V PIONEER 7301 AMF NHF CAF DDF
 NRA PIONEER 34Z 1684231
 LODGE LOLA 4M AMF NHF

SOO LINE KODIAK 9194 DDF
 DFCC 9194 LIBBY 13Z 1662936
 LODGE DUCHESS 42T

| BW | ADJ 205 | ADJ 365 | E P D | BW | WW | YW | Milk | TM | CE | MCE |
|----|---------|---------|-------|-----|----|----|------|----|-----|-----|
| 77 | 807 | 1442 | | 0.3 | 49 | 79 | 24 | 47 | 9.0 | 9.0 |

CHEVY is a long, smooth, low birth weight bull.



Tyler Harris Photography.com

40

DFCC 3049A Copper 109C

1847906 DFCC 109C 20/02/2015

BAR-E-L IRON WILL 32Y
 MERIT BIG DAWG 3049A 1745887
 MERIT PRIDE 865 I

HF HEMI 176W
 DFCC 176W SIZZLE 9Z 1662932
 DMM DYNA ELBA 19M

| BW | ADJ 205 | ADJ 365 | E P D | BW | WW | YW | Milk | TM | CE | MCE |
|----|---------|---------|-------|-----|----|----|------|----|-----|-----|
| 87 | 836 | 1471 | | 4.3 | 52 | 89 | 18 | 43 | 0.0 | 5.0 |

The combination of HEMI daughters and BIG DAWG has knocked it out of the park. The bulls are full of red meat and have stoutness, middle, butt, bone and soundness. 109C is no exception- Check out this TANK!!!



Tyler Harris Photography.com

41

DFCC 12 Carson 111C

1847908 DFCC 111C 21/02/2015

K-COW WINDMILL 67W
 K-COW WINDMILL 1Z 1663951
 DXB 1299J RUBY 1P

HF HEMI 176W
 DFCC 176W BREEZE 24Z 1662942
 LODGE QUEEN MOTHER 29U

| BW | ADJ 205 | ADJ 365 | E P D | BW | WW | YW | Milk | TM | CE | MCE |
|----|---------|---------|-------|-----|----|----|------|----|------|-----|
| 86 | 820 | 1481 | | 4.1 | 53 | 92 | 19 | 45 | -2.0 | 3.0 |

111C will make lots of friends sale day. I really like this bull ...tonnes of hair, thickness and top. He is also backed up by a powerful HEMI daughter which makes him full of potential.



Tyler Harris Photography.com



42

DFCC 3049A Chopper 114C

1847911 DFCC 114C 22/02/2015

BAR-E-L IRON WILL 32Y
MERIT BIG DAWG 3049A 1745887
 MERIT PRIDE 865 I

CLOVERLAKE FRONTIER 7S
MJT DARK DUCHESS 760U 1472084
 MJT DARK DUCHESS 404R

| BW | ADJ 205 | ADJ 365 | E P D | BW | WW | YW | Milk | TM | CE | MCE |
|----|---------|---------|-------|-----|----|----|------|----|-----|-----|
| 86 | 823 | 1483 | | 3.5 | 43 | 82 | 19 | 40 | 1.0 | 6.0 |

These BIG DAWG calves leave us in awe!!! I can't say enough about the consistency!!! Every calf has hair, butt, top, testicle stoutness, quarter and more. 114C is no exception! The icing on the cake here is the powerful MJT dam that never disappoints.

43

DFCC 488Z Cypress 120C

1878050 DFCC 120C 01/03/2015

20/20 TOUCHDOWN 20X
MJT TOUCH DOWN 488Z 1717652
 MJT MARIE 710U

BELVIN PANIC SWITCH 2'11
DFCC LADY PANIC 101A 1817429
 MJT ERICA 528T

| BW | ADJ 205 | ADJ 365 | E P D | BW | WW | YW | Milk | TM | CE | MCE |
|----|---------|---------|-------|-----|----|----|------|----|-----|-----|
| 76 | 844 | 1466 | | 1.5 | 38 | 78 | 22 | 41 | 5.0 | 6.0 |

An easy calving, TOUCHDOWN son here with loads of muscle. Heifer bull.

44

DFCC 34Z Cuba 123C

1847917 DFCC 123C 02/03/2015

S A V PIONEER 7301 AMF NHF CAF DDF
NRA PIONEER 34Z 1684231
 LODGE LOLA 4M AMF NHF

BROOKMORE TOTAL 22W
DFCC 22W ROSE 29Z 1662946
 EGGEN FAME MISS 63P

| BW | ADJ 205 | ADJ 365 | E P D | BW | WW | YW | Milk | TM | CE | MCE |
|----|---------|---------|-------|-----|----|----|------|----|-----|-----|
| 76 | 820 | 1328 | | 0.9 | 44 | 66 | 24 | 45 | 7.0 | 9.0 |

A smooth made heifer bull.

45

DFCC 36Z Corona 124C

1847918 DFCC 124C 04/03/2015

CONNELLY CONSENSUS 7229 CAF DDF AMF NHF
HF BINGHAMTON 36Z 1683810
 HF BETTY 164W

SOUTHLAND OLD SKOOL 33T
DFCC 33T STELLA 36Y 1651358
 CRESCENT CREEK ROSEBUD 155M

| BW | ADJ 205 | ADJ 365 | E P D | BW | WW | YW | Milk | TM | CE | MCE |
|----|---------|---------|-------|-----|----|----|------|----|-----|-----|
| 85 | 796 | 1456 | | 2.4 | 44 | 83 | 21 | 42 | 4.0 | 4.0 |

This March bull that doesn't give up anything to the rest! His style, length, middle, hip and strong proven pedigree make him a great choice!

46

DFCC 488Z Cabela 130C

1878049 DFCC 130C 10/03/2015


20/20 TOUCHDOWN 20X
MJT TOUCH DOWN 488Z 1717652
 MJT MARIE 710U

YOUNG DALE XPORT 5X
DFCC 5X ANNAMARIE 75A 1722598
 DBRL IM BLACKBIRD 94U

| BW | ADJ 205 | ADJ 365 | E P D | BW | WW | YW | Milk | TM | CE | MCE |
|----|---------|---------|-------|-----|----|----|------|----|-----|-----|
| 76 | 854 | 1476 | | 2.9 | 42 | 72 | 23 | 44 | 3.0 | 7.0 |

The sleep-easy kind of bull!!! With his smoothness he will make a top heifer bull.





Dave Kalyn
Rod Kalyn
Keith Mason

Box 776
 Shellbrook, SK
 S0J 2E0

Ph: 306-747-2101
 Fax: 306-747-2299
 eb.lumber@sasktel.net

47

DFCC 36Z Congo 132C

1847922 DFCC 132C 11/03/2015

CONNEALY CONSENSUS 7229 CAF DDF AMF NHF
 HF BINGHAMTON 36Z 1683810
 HF BETTY 164W

HF PROGRESS 20K
 LODGE LAURA 19T 1385200
 LODGE LAURA 89R

| BW | ADJ 205 | ADJ 365 | E P D | BW | WW | YW | Milk | TM | CE | MCE |
|----|---------|---------|-------|------|----|----|------|----|-----|-----|
| 75 | 824 | 1459 | | -0.7 | 39 | 73 | 23 | 43 | 7.0 | 4.0 |

CONGO is a long spined March bull that is built solid and will not disappoint.



Tyler Harris Photography.com

48

DFCC 1Z Coupe 138C

1847926 DFCC 138C 16/03/2015

K-COW WINDMILL 67W
 K-COW WINDMILL 1Z 1663951
 DXB 1299J RUBY 1P

HF HEMI 176W
 DFCC 176W STELLA 79Y 1612685
 ANH ENCHANTRESS 1K

| BW | ADJ 205 | ADJ 365 | E P D | BW | WW | YW | Milk | TM | CE | MCE |
|----|---------|---------|-------|-----|----|----|------|----|-----|-----|
| 79 | 848 | 1470 | | 2.3 | 52 | 84 | 14 | 40 | 2.0 | 3.0 |

Another March bull that has a lot going for him. His muscle, middle, testicle development and butt put him right up there with the older calves. His grand dam gave us FUTURE BREAKER, the high seller at our first sale to LOCK FARMS. Good bull here!



Tyler Harris Photography.com

49

DFCC 1Z Chinook 148C

1847932 DFCC 148C 30/03/2015

K-COW WINDMILL 67W
 K-COW WINDMILL 1Z 1663951
 DXB 1299J RUBY 1P

LLB 114P BANDO 571S
 MJT EULA 201X 1555991
 MJT EULA 609T

| BW | ADJ 205 | ADJ 365 | E P D | BW | WW | YW | Milk | TM | CE | MCE |
|----|---------|---------|-------|-----|----|----|------|----|-----|-----|
| 84 | 833 | 1506 | | 3.6 | 47 | 88 | 18 | 39 | 2.0 | 6.0 |

A sale day birthday bull. Take a good look at this bull as he is hard to fault. Just imagine this bull a few months down the road. Don't miss the potential here!!!



Tyler Harris Photography.com

**** Take Advantage of our sight unseen program ****
Call Kelly for more information

An Elite Group of Purebred Females...

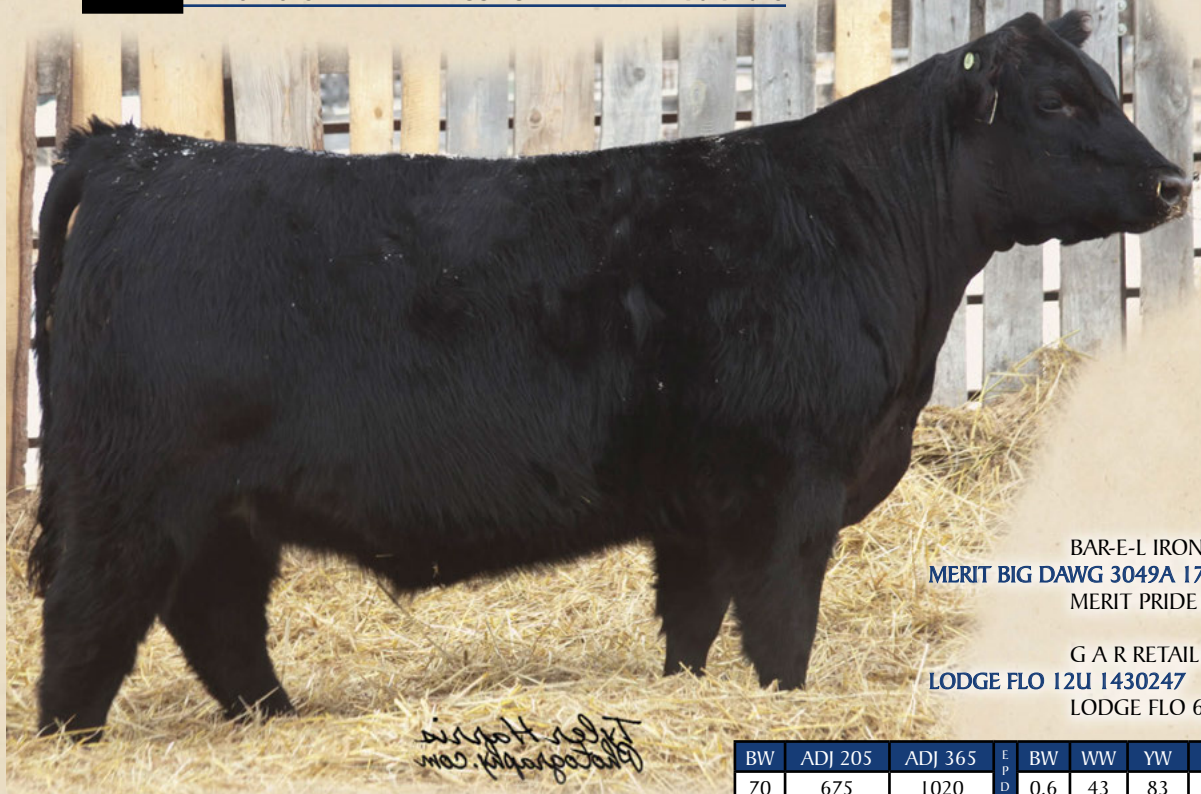
50

DFCC 3049A Crystal 1C

1847825

DFCC 1C

14/01/2015



*Photo by
Tara Harris
www.taraharris.com*

BARE-L IRON WILL 32Y
MERIT BIG DAWG 3049A 1745887
MERIT PRIDE 8651

G A R RETAIL PRODUCT AMF NHF CAF DDF
LODGE FLO 12U 1430247
LODGE FLO 69P

| BW | ADJ 205 | ADJ 365 | EPD | BW | WW | YW | Milk | TM | CE | MCE |
|----|---------|---------|-----|-----|----|----|------|----|-----|-----|
| 70 | 675 | 1020 | | 0.6 | 43 | 83 | 24 | 46 | 5.0 | 7.0 |

We are very excited as this is the first BIG DAWG heifer to be sold. This super heifer has everything you want.....rib, shape, extension and is beautiful fronted. We expect great things from her!!!

51

DFCC 1Z Candy 48C

1847858

DFCC 48C

04/02/2015



*Photo by
Tara Harris
www.taraharris.com*

K-COW WINDMILL 67W
K-COW WINDMILL 1Z 1663951
DXB 1299J RUBY 1P

MJT ESSOTERIC EXTRA 16K
EGGEN BIG SKY 16K 32N 1160842
GEIS COUNTESS 51'99

| BW | ADJ 205 | ADJ 365 | EPD | BW | WW | YW | Milk | TM | CE | MCE |
|----|---------|---------|-----|-----|----|----|------|----|-----|-----|
| 75 | 728 | 1048 | | 1.1 | 38 | 66 | 16 | 35 | 4.0 | 7.0 |

CANDY is sired by our K-COW WINDMILL bull that has left us with some excellent calves. This heifer has a lot going for her but what makes her a sure winner is her 13 year old dam. 48C will definitely be a top producer and be around a long time!!



Integra Tire
DNA Tire & Auto Inc.

431 Service Road East
Shellbrook, SK S0J 2E0

Derek Demorest
Owner/Manager

Ph: 306-747-3142 Cell: 306-960-2282
Fax: 306-747-2328 decojade@sasktel.net

www.integratire.com

Naber Ford **NABER**
POWERSPORTS



Welcome to the Naberhood! We have a fully stocked lot of Ford trucks, Cars & SUVs. Calling all Mud Junkies! We have Kawasaki & Suzuki ATVs, for work, play or just getting muddy! Stop by & visit our large stock of Parts & Accessories, or book your repair at the Ford or ATV Service departments

On-Site Financing & Leasing Available- Parts & Service Departments
Located on the Service Road In Shellbrook
Phone (306) 747-2213 or Toll Free 1-888-466-2237
www.naberford.com www.naberpowersports.com

52

DFCC 34Z Chianti 59C

1847865 DFCC 59C 05/02/2015

S A V PIONEER 7301 AMF NHF CAF DDF
 NRA PIONEER 34Z 1684231
 LODGE LOLA 4M AMF NHF

MJT ESSOTERIC EXTRA 16K
 EGGEN BIG SKY MISS 54N 1160695
 ANH BONI GAL

| BW | ADJ 205 | ADJ 365 | E P D | BW | WW | YW | Milk | TM | CE | MCE |
|----|---------|---------|-------|-----|----|----|------|----|-----|-----|
| 83 | 787 | 1127 | | 2.4 | 42 | 66 | 18 | 39 | 2.0 | 6.0 |

You have to admire 59C for her top, length, extension and sweetness. A definite sale feature!!



Tyler Harris Photography.com

53

DFCC 488Z Champagne 71C

1878052 DFCC 71C 08/02/2015

20/20 TOUCHDOWN 20X
 MJT TOUCH DOWN 488Z 1717652
 MJT MARIE 710U

NRA ABERDEEN 5Y
 DFCC 5Y ATHENA 31A 1765748
 DFCC 32T HOT LADY E.T. 22Y

| BW | ADJ 205 | ADJ 365 | E P D | BW | WW | YW | Milk | TM | CE | MCE |
|----|---------|---------|-------|-----|----|----|------|----|-----|-----|
| 79 | 765 | 1047 | | 2.8 | 48 | 78 | 23 | 47 | 2.0 | 6.0 |

If you are looking for a 4H project this heifer is for you!! Out of our MJT bull and a first calf heifer, she has tremendous style!!!



Tyler Harris Photography.com

54

DFCC 5Y Cupid 103C

1847904 DFCC 103C 17/02/2015

SOO LINE KODIAK 9172
 NORSEMAN KODIAK 5'11 1645936
 NORSEMAN QUEEN RUTH 42'09

NORSEMAN DATELINE 18'07
 DFCC 18T DATELINE 35W 1505850
 EGGEN FREEDOM 174P MS 5T

| BW | ADJ 205 | ADJ 365 | E P D | BW | WW | YW | Milk | TM | CE | MCE |
|----|---------|---------|-------|-----|----|----|------|----|-----|-----|
| 71 | 711 | 1082 | | 1.6 | 48 | 91 | 16 | 40 | 3.0 | 7.0 |

This heifer is hard to part with as her pedigree is stacked for success!! CUPID is a super fancy, big topped female that would do great in the ring as well as in the pasture.



Tyler Harris Photography.com

**** Thank You to all the buyers for your continued support in the Double 'F' Program. Hope to see you sale day! ****
**** Also Thank You to our sale crew. Your help is always appreciated! ****

An Elite Group of Commercial Females Consigned By...

Richard and Blake Wilson
 Seven X Ranch, Craig & Sheila Jones
 Riverview Colony
 Riverbend Colony

Prince Albert, SK
 Prince Albert, SK
 Saskatoon, SK
 Waldheim, SK



CELEBRATING OVER 30 YEARS IN BUSINESS AND STILL AWARD WINNING

Farm World has grown over the past 30 years to become one of the most successful New Holland dealerships in Western Canada. We have continually earned the prestigious New Holland President's Club recognition - one of the few dealers to earn this status in North America - due to the high standards we hold for all aspects of our business.



LOCALLY OWNED AND OPERATED

Farm World is locally owned and operated by Tex Prete, Jeff Saufer, Craig Cumming and Trevor Rumpel. Farm World is small enough where we know our customers by name yet we have the resources and facilities to service our progressive producers with the latest technologies and farming information to ensure our producers remain successful.



HIGHER CAPACITY. HIGHER DENSITY.

Get more out of every hay season with the 5'x6' round baler delivering greater capacity, durability and bale density—the NEW Roll-Belt™ 560 round baler from New Holland. With new pickups and belt choices and better windrow feeding, the restyled Roll-Belt™ 560 is built New Holland SMART and is set to continue New Holland's legacy in round baling.

20% INCREASE* IN:

- Pickup capacity
- Belt strength
- Belt drive force
- Baling capacity

* Compared to the BR7090



Three Locations:

Hwy. #2 South, Prince Albert 306-922-2525

Hwy. #3, Kinistino 306-864-3667

Hwy. #5, Humboldt 306-682-9920

www.farmworld.ca

Terms:

The terms of the sale are cash or cheque, payable at par at the sale location. The right of property shall not pass until after settlement has been made; no invoicing on buyers in attendance unless previous arrangements have been made. Every animal sells to the highest bidder and in cases of dispute the auctioneer's decision will be final. Announcements from the auction block will take precedence over the printed matter in the catalogue. Current exchange rates will be announced sale day. All monies are in Canadian funds.

Certificate of Registration:

Each animal will carry papers issued by the applicable breed association. A certificate of registry duly transferred will be furnished to the buyer for each animal after payment has been made.

Health:

All animals in the sale have met all necessary health requirements.

Guarantee:

Each animal becomes the purchaser's risk immediately after the animal is sold. All animals in this sale will be sold under the terms and guarantees set forth by the applicable breed association with regard to health, freedom from defects and from both reproductive and specific genetic unsoundness.

Liabilities:

All persons attend the sale at their own risk. The sellers, facility owner, auctioneer and sale manager assume no liability, legal or otherwise, for any accidents that occur.

Delivery:

Every assistance will be given in getting your purchases home. Free delivery up to 250 miles. Each animal becomes the risk of the purchaser as soon as sold.

Phone, Wire, Mail Bids:

Bidders unable to attend the sale may phone, wire or mail their bids and instructions to the sale manager, auctioneer or special representatives. Bids must be received in sufficient time prior to the sale.

Insurance:

Agents will be in attendance to insure your purchases. Bulls returning to the consignor's farm must be insured.

The Right to collect Semen:

Double 'F' Cattle Co. reserves the right to collect semen on any of the bulls sold at their expense and the buyer's convenience.

Errors:

All announcements at sale time, written or oral, supercede any written material in the catalogue.

Females:

Females must be taken home and paid for sale day.

EMTECH GENETICS SASK. LTD.
DOUG BIENIA, D.V.M.
BOX 148, HAGUE, SK S0K 1X0

- CUSTOM SEMEN COLLECTION
- CERTIFIED EMBRYO TRANSFER

PH: (306) 225-2261 CELL: (306) 221-2578
RES: (306) 225-5862 FAX: (306) 225-4412



DNA Tire & Auto Inc.

431 Service Road East
Shellbrook, SK S0J 2E0

Derek Demorest

Owner/Manager

Ph: 306-747-3142
Fax: 306-747-2328

Cell: 306-960-2282
decojade@sasktel.net

www.integratire.com

RASK
Tax Service Ltd.

R.R. 1 Birch Hills, SK S0J 0G0 Ph: 749-2275

Dennis Rask
749-2759

Darrin Rask
749-3180
Fax: 749-2235

Sales Excellence

CHRYSLER

FERNNY ALLARY
Sales and Leasing Consultant

Anderson Motors Ltd.
3333 6th Avenue East, Prince Albert, SK, S6V 8C8
Tel: 306.765.3000 Fax: 306.765.3120 Cell: 306.981.2558 E-Mail: fallary.aml@sasktel.net

RAM DODGE CHRYSLER Jeep

LIFE'S BRIGHTER

under the sun



Larry Brossart
Bus 306-747-2611
Cell 306-747-7125
larry.brossart@sunlife.com
www.sunlife.ca/larry.brossart
15 Main Street, Box 777
Shellbrook SK S0J 2E0

Sun
Life Financial

© Sun Life Assurance Company of Canada, 2010.

Shellbrook CHEVROLET

"It just keeps getting better"

CARS • TRUCKS • VANS • SUVS

We're #1 For Price & Service

GM **Goodwrench & Autobody Service**
1-800-667-0511



Blaine Lake Veterinary Services

Alexander G. von Dewitz D.V.M.

Large and Small Animal Practice

210 - 4th Avenue West/ Box 309/ Blaine Lake, Sask. S0J 0J0

Telephone (306) 497-3118

Return Undeliverable
Canadian Addresses to:
Double 'F' Cattle Co.
Box 50
Parkside, SK S0J 2A0



Lot 1



Lot 2



Lot 8



Lot 17



Lot 18



Lot 28



Lot 30



Lot 33

SEE YOU AT THE SALE **March 30**