

**24th**

**TOP**

**Black Angus Bull Sale**

**CRAIG ANGUS  
FORBES ANGUS  
BEAR CREEK ANGUS**

**HAWKEYE RANCHING COMPANY LTD.**



**Friday, March 25th - 1:00PM CST**

**20 YEARLING BULLS**

**58 TWO YEAR OLD BULLS**

**COWTOWN**

**LIVESTOCK EXCHANGE**

**Maple Creek, SK**

**TERMS OF SALE:** The terms of the sale are cash or cheque, made payable in Canadian funds immediately after the sale. The right of ownership shall not pass from seller to buyer until settlement is made. As soon as the animal is sold it becomes the responsibility of the purchaser.

**BREEDING GUARANTEE:** All cattle are sound and sell with a responsible breeder guarantee of satisfaction. In the event any bull 14 months of age or over fails to prove a breeder after being used on cows known to be breeders, within six months of the sale date, may be returned to the seller at the buyers expense. The seller reserves the privilege of trying to prove that animal a breeder. Full settlement and satisfaction of all claims is the option of the seller (whether return of the purchase price or replacement of the animal with one of equal value.) Any animal returned must be free of disease and in good health.

**CATTLE INSPECTION:** All carry permanent identity tags corresponding to the sale lot numbers. All shall be available for inspection prior to the sale.

**ANNOUNCEMENTS:** All announcements from the auction block will take precedence over the printed matter in the catalogue. Buyers are therefore cautioned to pay close attention to any announcements.

**DISPUTES:** In the case of disputes bidding will be reopened between the parties involved. If no further bid is made, the buyer will be the person from whom the auctioneer accepted the last bid. The Auctioneer's decision in such matters is final.

**LIABILITIES:** All people who attend the sale do so at their own risk. The owners, Management and Sale Staff assume no liability, legal or otherwise, for property loss or any accidents that may occur on or about the premises.

**CERTIFICATE OF REGISTRY:** A certificate of registry duly transferred will be furnished to the buyer by the breeder for each registered animal after settlement has been made.

**General Information:**

All bulls will be semen evaluated. Scrotal measurements and current weights will be available on sale day.

All bulls will be vet inspected for soundness and are

**GUARANTEED BREEDERS**

For more information contact:  
Cowtown Livestock Exchange  
Tyler Cronkhite (306) 662-2648  
Jim Wilson H: (306) 558-4410  
Brent Weiss H: (306) 558-4401

Gordie Cameron-Auctioneer: (306)622-2234

**View catalogue  
on line at  
[www.buyagro.com](http://www.buyagro.com)**

# CONSIGNORS

## CRAIG ANGUS

Jason & Tanya Craig  
Tompkins, SK  
H: 306-622-2021  
E: craigangus@sasktel.net

## FORBES ANGUS

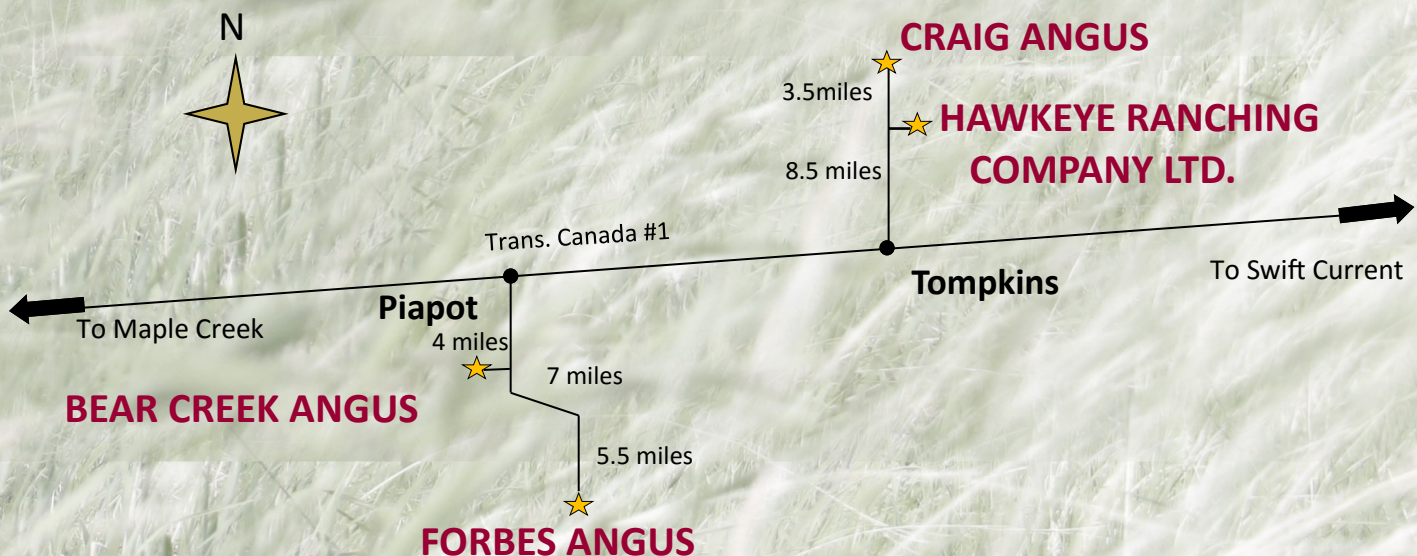
Colin Forbes  
Maple Creek, SK  
H: 306-558-2063  
E: colinforbes@xplornet.com

## BEAR CREEK ANGUS

Chad & Nikki Weiss  
Maple Creek, SK  
H: 306-558-0011  
C: 306-662-7060  
E: wick\_weiss35@hotmail.com

## HAWKEYE RANCHING COMPANY LTD.

Leif & Melissa Brost  
Tompkins, SK  
H: 306-622-2632  
C: 403-928-5893  
E: leif\_brost@hotmail.com



# CRAIG ANGUS

On behalf of Craig Angus Cattle Co. I would like to welcome everyone to the 24th annual Top Cut Bull sale.

With the turn of the calendar brings change and this year is no different. As you read the catalog you will notice we have a new consignor to our bull sale. I would like to welcome Hawkeye Ranch, Leif and Melissa Brost and family to our group of consignors. They will be bringing a strong set of yearling bulls.

This might be the best set of 2 year old bulls we have brought to town. The bulls for sale represent under 50 percent of the bull calves born in 2014. They have been culled 5 times from birth to sale day to ensure they do justice to the name Top Cut Bull Sale. I believe it is better for the cattle industry to have more steers in the feedlot than mediocre herd bulls in the breeding field.

If you need a bull to add length, thickness, milk to your herd or a calving ease specialist we have the bulls to get the job done. The bulls have received their first two shots of the foot rot vaccine and will only require a booster shot before turnout.

If you have any questions about any of the bulls call or better yet stop in for a visit. The bulls will be in Cowtown yards by noon on March 24th for viewing. Hope to see everyone on the 25th and join us for some hospitality after the sale.

Jason & Tanya Craig



## A REFERENCE SIRE SOO LINE MOTIVE 1034

SOO 34Y 1605810 JANUARY 09, 2011  
 HF KODIAK 5R SANDY BAR ADVANTAGE 43M  
**SOO LINE MOTIVE 9016** WILBAR RUBY 955N  
 TLA BEAUTY 5R RR 7407 RAINMAKER 2154  
 TERRENE BEAUTY 35F

BAR-E-L THOR 6T TC STOUT 407  
**SOO LINE BLACKBIRD 9224** BAR E-L 365 ENCHANTRES 36J  
 MINBURN BLACKBIRD 144P KBJ WINDY 680M  
 MINBURN BLACKBIRD 117M

	BW	WW	YW	MILK	T.MAT.	CALV	MAT CALV EASE
EPD	+1.9	+45	+92	+26	+49	+7.0	+10.0



# 1

## JC CRAIG'S MOTIVE 16B

**Please join us  
For Beef On a Bun  
Starting 11:00am**



JCT 16B 1801590 APRIL 07, 2014 BW: 86  
WEANED: OCTOBER 18, 2014 WW: 595 ADJ 205d WW: 624

SOO LINE MOTIVE 9016  
**SOO LINE MOTIVE 1034**  
SOO LINE BLACKBIRD 9224

HF KODIAK 5R  
TLA BEAUTY 5R  
BAR-E-L THOR 6T  
MINBURN BLACKBIRD 144P

CRAIG'S YELLOWSTONE 6R  
**CRAIG'S PANSY 10T**  
JC PANSY 11H

JC CRAIG'S YELLOWSTONE 8M  
JC CRAIG'S PRIDE 1K  
ALLEN CROFT FLYTRAVELER 04 102F  
JC PANSY OF PEAK DOT 56F

	BW	WW	YW	MILK	T.MAT.	CALV EASE	MAT CALV EASE
EPD	+2.5	+30	+60	+17	+32	+5.0	+8.0

# 2

## JC CRAIG'S MOTIVE 38B



JCT 38B 1801604 APRIL 13, 2014 BW: 86  
WEANED: OCTOBER 18, 2014 WW: 635 ADJ 205d WW: 685

SOO LINE MOTIVE 9016  
**SOO LINE MOTIVE 1034**  
SOO LINE BLACKBIRD 9224

HF KODIAK 5R  
TLA BEAUTY 5R  
BAR-E-L THOR 6T  
MINBURN BLACKBIRD 144P

PSF NEW FRONTIER 31R  
**CRAIG'S ERROLINE 6U**  
JC CRAIG'S ERROLINE 21J

B/R NEW FRONTIER 095  
PSF ROSEBUD 29M  
JC LUCY BOY 1F  
JC ERROLINE 6F

	BW	WW	YW	MILK	T.MAT.	CALV EASE	MAT CALV EASE
EPD	+2.1	+34	+65	+21	+38	+5.0	+7.0

# 3

## JC CRAIG'S MOTIVE 47B

JCT 47B 1801626 APRIL 14, 2014 BW: 84  
WEANED: OCTOBER 18, 2014 WW: 555 ADJ 205d WW: 600

SOO LINE MOTIVE 9016  
**SOO LINE MOTIVE 1034**  
SOO LINE BLACKBIRD 9224

HF KODIAK 5R  
TLA BEAUTY 5R  
BAR-E-L THOR 6T  
MINBURN BLACKBIRD 144P

JC CRAIG'S BANDO 16M  
**CRAIG'S DUCHESS 87W**  
CRAIG'S DUCHESS 40T

BON VIEW BANDO 1245  
JC CRAIG'S CASSIE 33K  
FRL VISION 16M  
JC DUCHESS 7G

	BW	WW	YW	MILK	T.MAT.	CALV EASE	MAT CALV EASE
EPD	+1.5	+30	+56	+23	+38	+7.0	+9.0

# 4

## JC CRAIG'S MOTIVE 53B

JCT 53B 1801611 APRIL 15, 2014 BW: 86  
WEANED: OCTOBER 18, 2014 WW: 605 ADJ 205d WW: 658

SOO LINE MOTIVE 9016  
**SOO LINE MOTIVE 1034**  
SOO LINE BLACKBIRD 9224

HF KODIAK 5R  
TLA BEAUTY 5R  
BAR-E-L THOR 6T  
MINBURN BLACKBIRD 144P

PSF NEW FRONTIER 31R  
**CRAIG'S DUCHESS 51U**  
JC CRAIG'S DUCHESS 17M

B/R NEW FRONTIER 095  
PSF ROSEBUD 29M  
JC CRAIG'S ABLE 4J  
CHICO DUCHESS 4A

	BW	WW	YW	MILK	T.MAT.	CALV EASE	MAT CALV EASE
EPD	+2.6	+35	+69	+17	+35	+4.0	+9.0

# 5

## JC CRAIG'S MOTIVE 79B

JCT 59B 1801619 APRIL 24, 2014 BW: 84  
WEANED: OCTOBER 18, 2014 WW: 580 ADJ 205d WW: 658

SOO LINE MOTIVE 9016  
**SOO LINE MOTIVE 1034**  
SOO LINE BLACKBIRD 9224

HF KODIAK 5R  
TLA BEAUTY 5R  
BAR-E-L THOR 6T  
MINBURN BLACKBIRD 144P

FRL VISION 16M  
**CRAIG'S ARLENE 50S**  
JC CRAIG'S ARLENE 65M

V D A R VISION 243  
COUNTRESS OF DALRENE 1Y  
JC CRAIG'S ABLE 4J  
ARLENE OF BEAVER SPRINGS 60E

	BW	WW	YW	MILK	T.MAT.	CALV EASE	MAT CALV EASE
EPD	+2.3	+33	+62	+17	+37	+5.0	+7.0

# 6

## JC CRAIG'S MOTIVE 101B

JCT 101B 1801610 MAY 06, 2014 BW: 92  
WEANED: OCTOBER 18, 2014 WW: 565 ADJ 205d WW: 680

SOO LINE MOTIVE 9016  
**SOO LINE MOTIVE 1034**  
SOO LINE BLACKBIRD 9224

HF KODIAK 5R  
TLA BEAUTY 5R  
BAR-E-L THOR 6T  
MINBURN BLACKBIRD 144P

PSF NEW FRONTIER 31R  
**CRAIG'S MISS BURGESS 42U**  
CRAIG'S MISS BURGESS 48P

B/R FRONTIER 095  
PSF ROSEBUD 29M  
JC CRAIG'S ABLE 8L  
JC MISS BURGESS 5E

	BW	WW	YW	MILK	T.MAT.	CALV EASE	MAT CALV EASE
EPD	+4.2	+36	+71	+20	+38	+0.0	+5.0

# B REFERENCE SIRE

## SOO LINE KODIAK 1057

S00 57Y 1605861 JANUARY 16, 2011

SANDY BAR ADVANTAGE 43M  
**HF KODIAK 5R**  
WILBUR RUBY 955N

TC ADVANTAGE  
SANDY BAR JEMINA 44K  
VERMILION YELLOWSTONE  
WILBAR RUBY 16J

DRYLAND ICEBERG 231  
**EASTONDALE LADY SANDY 118'04**  
KBJ LADY SANDY 562K

CAR ICEBERG 056  
GDAR FOREVER LADY 9136  
KBJ ROUND MR ANGUS 2P  
KBJ LADY SANDY

	BW	WW	YW	MILK	T.MAT.	CALV EASE	MAT CALV EASE
EPD	+3.0	+47	+87	+16	+40	+4.0	+6.0



Lot 8

# 7

## JC CRAIG'S KODIAK 18B

JCT 18B 1801583 APRIL 08, 2014 BW: 87  
WEANED: OCTOBER 18, 2014 WW: 625 ADJ 205d WW: 658

HF KODIAK 5R  
**SOO LINE KODIAK 1057**  
EASTONDALE LADY SANDY 118'04

SANDY BAR ADVANTAGE 43M  
WILBAR RUBY 955N  
DRYLAND ICEBERG 231  
KBJ LADY SANDY 562K

JC CRAIG'S ABLE 8L  
**CRAIG'S DUCHESS 36R**  
JC CRAIG'S DUCHESS 35K

JC CRAIG'S ABLE 4J  
JC CRAIG'S ALMA 29J  
JC LUCY BOY 1F  
CHICO DUCHESS 4A

	BW	WW	YW	MILK	T.MAT.	CALV EASE	MAT CALV EASE
EPD	+2.8	+37	+62	+9	+28	+2.0	+6.0

# 8

## JC CRAIG'S KODIAK 30B

JCT 30B 1801607 APRIL 10, 2014 BW: 88  
WEANED: OCTOBER 18, 2014 WW: 630 ADJ 205d WW: 670

HF KODIAK 5R  
**SOO LINE KODIAK 1057**  
EASTONDALE LADY SANDY 118'04

SANDY BAR ADVANTAGE 43M  
WILBAR RUBY 955N  
DRYLAND ICEBERG 231  
KBJ LADY SANDY 562K

PSF NEW FRONTIER 31R  
**CRAIG'S TIMELESS LADY 19U**  
JC CRAIG'S TIMELESS LADY 22M

B/R NEW FRONTIER 095  
PSF ROSEBUD 29M  
ALLEN CROFT FLYTRAVELER 04 102F  
JC CRAIG'S TIMELESS LADY 25K

	BW	WW	YW	MILK	T.MAT.	CALV EASE	MAT CALV EASE
EPD	+3.0	+36	+63	+15	+33	+2.0	+5.0



[www.jdat.ca](http://www.jdat.ca)

**JayDee**  
AGTECH

phone 306.662.2233  
fax 306.662.3049  
email [GeneralOffice@jdat.ca](mailto:GeneralOffice@jdat.ca)

Box 1810, Highway #21 North, Maple Creek, Saskatchewan S0N 1N0

Supplier of Coffee & Donuts



9

## JC CRAIG'S **KODIAK** 31B

JCT 31B 1801579 APRIL 11, 2014 BW: 85  
WEANED: OCTOBER 18, 2014 WW: 560 ADJ 205d WW: 598

HF KODIAK 5R  
**SOO LINE KODIAK 1057**  
EASTONDALE LADY SANDY 118'04

SANDY BAR ADVANTAGE 43M  
WILBAR RUBY 955N  
DRYLAND ICEBERG 231  
KBJ LADY SANDY 562K

FRL WIDESPREAD 8M  
**CRAIG'S LADY HEATHER 9R**  
JC CRAIG'S LADY HEATHER 13J

WHITESTONE WIDESPREAD MB  
KBJ BLACK BEAUTY 442J  
JC LUCY BOY 1F  
JC LADY HEATHER 2F

	BW	WW	YW	MILK	T.MAT.	CALV EASE	MAT CALV EASE
EPD	<b>+2.4</b>	<b>+35</b>	<b>+62</b>	<b>+15</b>	<b>+33</b>	<b>+5.0</b>	<b>+7.0</b>

10

## JC CRAIG'S **KODIAK** 36B

JCT 36B 1801618 APRIL 12, 2014 BW: 86  
WEANED: OCTOBER 18, 2014 WW: 675 ADJ 205d WW: 725

HF KODIAK 5R  
**SOO LINE KODIAK 1057**  
EASTONDALE LADY SANDY 118'04

SANDY BAR ADVANTAGE 43M  
WILBAR RUBY 955N  
DRYLAND ICEBERG 231  
KBJ LADY SANDY 562K

JC CRAIG'S BANDO 16M  
**CRAIG'S BLACKLASS 7W**  
CRAIG'S BLACKLASS 56T

BON VIEW BANDO 1245  
JC CRAIG'S CASSIE 33K  
FREEWAY STOCKMAN 69P  
JC BLACKLASS 21G

	BW	WW	YW	MILK	T.MAT.	CALV EASE	MAT CALV EASE
EPD	<b>+1.5</b>	<b>+44</b>	<b>+67</b>	<b>+20</b>	<b>+42</b>	<b>+6.0</b>	<b>+7.0</b>



# 11

## JC CRAIG'S KODIAK 63B

JCT 63B 1801598 APRIL 18, 2014 BW: 77  
WEANED: OCTOBER 18, 2014 WW: 605 ADJ 205d WW: 668

HF KODIAK 5R  
**SOO LINE KODIAK 1057**  
EASTONDALE LADY SANDY 118'04

SANDY BAR ADVANTAGE 43M  
WILBAR RUBY 955N  
DRYLAND ICEBERG 231  
KBJ LADY SANDY 562K

FRL VISION 16M  
**CRAIG'S BURGESS 49T**  
JC CRAIG'S BURGESS 35L

V D A R VISION 243  
COUNTRESS OF DALRENE 1Y  
ALLEN CROFT FLYTRAVELER 04 102F  
JC CRAIG'S BURGESS 6J

	BW	WW	YW	MILK	T.MAT.	CALV EASE	MAT CALV EASE
EPD	+3.1	+36	+62	+17	+34	+2.5	+4.0

# 12

## JC CRAIG'S KODIAK 64B

JCT 64B 1801599 APRIL 18, 2014 BW: 74  
WEANED: OCTOBER 18, 2014 WW: 550 ADJ 205d WW: 607

HF KODIAK 5R  
**SOO LINE KODIAK 1057**  
EASTONDALE LADY SANDY 118'04

SANDY BAR ADVANTAGE 43M  
WILBAR RUBY 955N  
DRYLAND ICEBERG 231  
KBJ LADY SANDY 562K

FRL VISION 16M  
**CRAIG'S BURGESS 49T**  
JC CRAIG'S BURGESS 35L

V D A R VISION 243  
COUNTRESS OF DALRENE 1Y  
ALLEN CROFT FLYTRAVELER 04 102F  
JC CRAIG'S BURGESS 6J

	BW	WW	YW	MILK	T.MAT.	CALV EASE	MAT CALV EASE
EPD	+2.9	+37	+62	+17	+35	+2.5	+4.0

# 13

## JC CRAIG'S KODIAK 68B

JCT 68B 1801589 APRIL 19, 2014 BW: 86  
WEANED: OCTOBER 18, 2014 WW: 585 ADJ 205d WW: 648

HF KODIAK 5R  
**SOO LINE KODIAK 1057**  
EASTONDALE LADY SANDY 118'04

SANDY BAR ADVANTAGE 43M  
WILBAR RUBY 955N  
DRYLAND ICEBERG 231  
KBJ LADY SANDY 562K

CRAIG'S YELLOWSTONE 6R  
**CRAIG'S ERROLLINE 8T**  
JC ERROLLINE 8H

JC CRAIG'S YELLOWSONTE 8M  
JC CRAIG'S PRIDE 1K  
ALLEN CROFT FLYTRAVELER 04 102F  
JC ERROLLINE 6F

	BW	WW	YW	MILK	T.MAT.	CALV EASE	MAT CALV EASE
EPD	+2.7	+37	+62	+15	+34	+2.0	+5.0

# 14

## JC CRAIG'S KODIAK 90B

JCT 90B 1801591 APRIL 29, 2014 BW: 96  
WEANED: OCTOBER 18, 2014 WW: 585 ADJ 205d WW: 679

HF KODIAK 5R  
**SOO LINE KODIAK 1057**  
EASTONDALE LADY SANDY 118'04

SANDY BAR ADVANTAGE 43M  
WILBAR RUBY 955N  
DRYLAND ICEBERG 231  
KBJ LADY SANDY 562K

FRL VISION 16M  
**CRAIG'S MORRISON 22T**  
JC CRAIG'S MORRISON 64M

V D A R VISION 243  
COUNTRESS OF DALRENE 1Y  
ALLEN CROFT FLYTRAVELER 04 102F  
JC CRAIG'S LUCY MORRISON 3K

	BW	WW	YW	MILK	T.MAT.	CALV EASE	MAT CALV EASE
EPD	+4.2	+34	+59	+17	+34	+0.0	+3.0



# 15

## JC CRAIG'S KODIAK 93B

JCT 93B 1801624 MAY 01, 2014 BW: 88  
WEANED: OCTOBER 18, 2014 WW: 600 ADJ 205d WW: 705

HF KODIAK 5R  
**SOO LINE KODIAK 1057**  
EASTONDALE LADY SANDY 118'04

SANDY BAR ADVANTAGE 43M  
WILBAR RUBY 955N  
DRYLAND ICEBERG 231  
KBJ LADY SANDY 562K

SANDY BAR LIGHTENING 68T  
**CRAIG'S MORRISON 54W**  
CRAIG'S MORRISON 18R

VALLEY BLOSSOM LIGHTENING 706P  
SANDY BAR ANNIE K 43H  
JC CRAIG'S YELLOWSTONE 8M  
JC CRAIG'S MORRISON 64M

	BW	WW	YW	MILK	T.MAT.	CALV EASE	MAT CALV EASE
EPD	+3.1	+37	+64	+18	+37	+2.0	+5.0



# 16

## JC CRAIG'S KODIAK 108B

JCT 108B 1801580 MAY 12, 2014 BW: 89  
WEANED: OCTOBER 18, 2014 WW: 590 ADJ 205d WW: 735

HF KODIAK 5R  
**SOO LINE KODIAK 1057**  
EASTONDALE LADY SANDY 118'04

SANDY BAR ADVANTAGE 43M  
WILBAR RUBY 955N  
DRYLAND ICEBERG 231  
KBJ LADY SANDY 562K

JC CRAIG'S ABLE 8L  
**CRAIG'S MORRISON 14R**  
BIEVER'S PRIDE 30F

JC CRAIG'S ABLE 4J  
JC CRAIG'S ALMA 29J  
MVHF STOCKMAN'S CHOICE 66B  
PRIDE OF VENTURE VIEW 305

	BW	WW	YW	MILK	T.MAT.	CALV EASE	MAT CALV EASE
EPD	<b>+3.6</b>	<b>+43</b>	<b>+69</b>	<b>+13</b>	<b>+35</b>	<b>+1.0</b>	<b>+4.0</b>



Lot 16

# 17

## JC CRAIG'S KODIAK 130B

JCT 130B 1801597 APRIL 22, 2014 BW: 90  
WEANED: OCTOBER 18, 2014 WW: 525 ADJ 205d WW: 685

HF KODIAK 5R  
**SOO LINE KODIAK 1057**  
EASTONDALE LADY SANDY 118'04

SANDY BAR ADVANTAGE 43M  
WILBAR RUBY 955N  
DRYLAND ICEBERG 231  
KBJ LADY SANDY 562K

FRL VISION 16M  
**CRAIG'S ALMA 45T**  
JC CRAIG'S ALMA 13K

V D A R VISION 243  
COUNTS OF DALRENE 1Y  
ARDA TEMPO 227G  
JC LADY ALMA 20H

	BW	WW	YW	MILK	T.MAT.	CALV EASE	MAT CALV EASE
EPD	<b>+3.0</b>	<b>+35</b>	<b>+57</b>	<b>+18</b>	<b>+36</b>	<b>+2.0</b>	<b>+3.0</b>



Phone: 306-662-2724  
Visit us on Facebook or on our Website  
at [www.maplecreekvet.com](http://www.maplecreekvet.com)

- Dr. Klea- Ann Wasilow
- Dr. Randy Hlady
- Dr. Luke Runnion
- Dr. Taija Watson
- Dr. Kathryn Bohnet

*For all your veterinary needs  
with a wide variety of tack!*

Supplier of Roast Beef

## C REFERENCE SIRE LNS TITAN 5Y

LNS 5Y 1616018 FEBRUARY 1, 2011

DMM AMBUSH 03M  
**DBRL 03M TITAN 4T**  
DBRL BLACKBIRD 2N

HIGH VALLEY 4C6 AMBUSH  
DMM MISS ESSENCE 108J  
COLDSTREAM BLACKBURN 10L  
COLDSTREAM BLACKBIRD 7K

S A V 004 DENSITY 4336  
**MEADOW RIDGE MAY 38T**  
MEADOW RIDGE JENNY 878

S A V 8180 TRAVELER 004  
S A V MAY 7238  
BON VIEW NEW DESIGN 878  
TAF V8 JENNIFER 117M

	BW	WW	YW	MILK	T.MAT.	CALV EASE	MAT CALV EASE
EPD	<b>+3.5</b>	<b>+38</b>	<b>+76</b>	<b>+14</b>	<b>+33</b>	<b>+5.0</b>	<b>+7.0</b>



# 18

## JC CRAIG'S TITAN 32B

JCT 32B 1801629 APRIL 11, 2014 BW: 88  
WEANED: OCTOBER 18, 2014 WW: 615 ADJ 205d WW: 695

DBRL 03M TITAN 4T  
**LNS TITAN 5Y**  
MEADOW RIDGE MAY 38T

DMM AMBUSH 03M  
DBRL BLACKBIRD 2N  
S A V 004 DENSITY 4336  
MEADOW RIDGE JENNY 878

SANDY BAR LIGHTENING 68T  
**CRAIG'S GENERAL 8Y**  
JC CRAIG'S GENERAL 20M

VALLEY BLOSSOM LIGHTENING 706P  
SANDY BAR ANNIE K 43H  
VERMILION YELLOWSTONE  
JC GENERAL 59E

	BW	WW	YW	MILK	T.MAT.	CALV EASE	MAT CALV EASE
EPD	+3.4	+32	+66	+16	+32	+2.0	+5.0

# 19

## JC CRAIG'S TITAN 91B

JCT 91B 1801668 APRIL 30, 2014 BW: 86  
WEANED: OCTOBER 18, 2014 WW: 570 ADJ 205d WW: 704

DBRL 03M TITAN 4T  
**LNS TITAN 5Y**  
MEADOW RIDGE MAY 38T

DMM AMBUSH 03M  
DBRL BLACKBIRD 2N  
S A V 004 DENSITY 4336  
MEADOW RIDGE JENNY 878

CRAIG'S YELLOWSTONE 6R  
**CRAIG'S LADY HEATHER 68Y**  
CRAIG'S LADY HEATHER 9R

JC CRAIG'S YELLOWSTONE 8M  
JC CRAIG'S PRIDE 1K  
FRL WIDESPREAD 8M  
JC CRAIG'S LADY HEATHER 13J

	BW	WW	YW	MILK	T.MAT.	CALV EASE	MAT CALV EASE
EPD	+3.4	+38	+75	+14	+33	+2.0	+7.0

# D

## REFERENCE SIRE

### REMINGTON FINAL ANSWER 19U

RCC 19U 1444906 JANUARY 18, 2008

SITZ TRAVELER 8180  
**S A V FINAL ANSWER 0035**  
S A V EMULOUS 8145

G D A R TRAVELER 71  
SITZ EVERELDA ENTENSE 1137  
BON VIEW BANDO 598  
S A V SKY EMULOUS 2124

ALBERDA TRAVELER 416  
**ROYAL ELBINA DRCC 5118R**  
ROYAL ELBINA DRCC 2043 M

D H D TRAVELER 6807  
ALBERDA QUEEN KIMBERLY 222  
TWIN VALLEY PRECISION E161  
THOMAS ELBINA 0183

	BW	WW	YW	MILK	T.MAT.	CALV EASE	MAT CALV EASE
EPD	-2.2	+50	+90	+22	+47	+13.0	+11.0



Lot 19

# 20

## JC CRAIG'S FINAL ANSWER 6B

JCT 6B 1801606 APRIL 03, 2014 BW: 78  
WEANED: OCTOBER 18, 2014 WW: 605 ADJ 205d WW: 624

S A V FINAL ANSWER 0035  
**REMINGTON FINAL ANSWER 19U**  
ROYAL ELBINA DRCC 5118R

SITZ TRAVELER 8180  
S A V EMULOUS 8145  
ALBERDA TRAVELER 416  
ROYAL ELBINA DRCC 2043M

CRAIG'S YELLOWSTONE 6R  
**CRAIG'S ERROLLINE 11U**  
JC CRAIG'S ERROLLINE 9M

JC CRAIG'S YELLOWSTONE 8M  
JC CRAIG'S PRIDE 1K  
BON VIEW BANDO 1245  
JC CRAIG'S ERROLLINE 5K

	BW	WW	YW	MILK	T.MAT.	CALV EASE	MAT CALV EASE
EPD	-1.0	+34	+67	+14	+31	+10.0	+10.0

Recommended for heifers.



Lot 20



## 21 JC CRAIG'S FINAL ANSWER 11B



Lot 21

JCT 11B 1801635 APRIL 05, 2014 BW: 86  
 WEANED: OCTOBER 18, 2014 WW: 660 ADJ 205d WW: 724

S A V FINAL ANSWER 0035  
**REMINGTON FINAL ANSWER 19U**  
 ROYAL ELBINA DRCC 5118R

SITZ TRAVELER 8180  
 S A V EMULOUS 8145  
 ALBERDA TRAVELER 416  
 ROYAL ELBINA DRCC 2043M

SANDY BAR LIGHTENING 68T  
**CRAIG'S PRIDE 44Y**  
 CRAIG'S PRIDE 67U

VALLEY BLOSSOM LIGHTENING 706P  
 SANDY BAR ANNIE K 43H  
 FRL VISION 16M  
 CRAIG'S PRIDE 65P

	BW	WW	YW	MILK	T.MAT.	CALV EASE	MAT CALV EASE
EPD	+2.0	+38	+70	+21	+40	+5.0	+5.0

## 22 JC CRAIG'S FINAL ANSWER 28B



Lot 22

JCT 28B 1801594 APRIL 09, 2014 BW: 83  
 WEANED: OCTOBER 18, 2014 WW: 640 ADJ 205d WW: 678

S A V FINAL ANSWER 0035  
**REMINGTON FINAL ANSWER 19U**  
 ROYAL ELBINA DRCC 5118R

SITZ TRAVELER 8180  
 S A V EMULOUS 8145  
 ALBERDA TRAVELER 416  
 ROYAL ELBINA DRCC 2043M

JC CRAIG'S BANDO 18M  
**CRAIG'S CASSIE 40T**  
 CRAIG'S CASSIE 40R

BON VIEW BANDO 1245  
 JC CRAIG'S CASSIE 33K  
 JC CRAIG'S ABLE 8L  
 JC CASSIE 12G

	BW	WW	YW	MILK	T.MAT.	CALV EASE	MAT CALV EASE
EPD	-0.3	+41	+72	+17	+38	+9.0	+9.0

Recommended for heifers.

## 23 JC CRAIG'S FINAL ANSWER 76B

JCT 76B 1801615 APRIL 23, 2014 BW: 84  
 WEANED: OCTOBER 18, 2014 WW: 635 ADJ 205d WW: 719

S A V FINAL ANSWER 0035  
**REMINGTON FINAL ANSWER 19U**  
 ROYAL ELBINA DRCC 5118R

SITZ TRAVELER 8180  
 S A V EMULOUS 8145  
 ALBERDA TRAVELER 416  
 ROYAL ELBINA DRCC 2043M

FRL VISION 16M  
**CRAIG'S DUCHESS 69U**  
 CRAIG'S DUCHESS 31R

V D A R VISION 243  
 COUNTESS OF DALRENE 1Y  
 JC CRAIG'S ABLE 8L  
 JC PANSY 11H

	BW	WW	YW	MILK	T.MAT.	CALV EASE	MAT CALV EASE
EPD	+0.8	+40	+73	+17	+37	+7.0	+7.0

**Feed that works as hard as you do.**

Not all feed is created equal. At Hi-Pro Feeds, we produce only the highest performing feed products to the most stringent standards and do it with an unwavering focus on consistent quality.

**Put Hi-Pro feed to work for you today.**

Cody O'Donnell: 403-394-4125  
 Doug Holt: 403-330-5549  
 Joe McLean: 403-382-9739  
 Duke Joy: 403-633-0070

**HI-PRO FEEDS** Invested in animal nutrition

f @ hiprofeeds.com

**Buyer's Draw Sponsor**

## 24 JC CRAIG'S FINAL ANSWER 99B



JCT 99B 1801666 MAY 5, 2014 BW: 89  
 WEANED: OCTOBER 18, 2014 WW: 605 ADJ 205d WW: 764

S A V FINAL ANSWER 0035  
**REMINGTON FINAL ANSWER 19U**  
 ROYAL ELBINA DRCC 5118R

SITZ TRAVELER 8180  
 S A V EMULOUS 8145  
 ALBERDA TRAVELER 416  
 ROYAL ELBINA DRCC 2043M

REMINGTON FINAL ANSWER 19U  
**CRAIG'S BLACKLASS 63Y**  
 CRAIG'S BLACKLASS 7W

S A V FINAL ANSWER 0035  
 ROYAL ELBINA DRCC 5118R  
 JC CRAIG'S BANDO 16M  
 CRAIG'S BLACKLASS 56T

	BW	WW	YW	MILK	T.MAT.	CALV EASE	MAT CALV EASE
EPD	+0.1	+53	+89	+23	+50	+8.0	+7.0

## E REFERENCE SIRE JL OPEN SEASON 1015

JLMB 15Y 1610614 JANUARY 12, 2011

S A V 8180 TRAVELER 004  
**S A V FOUR SEASONS 5231**  
 S A V MAY 2397

SIT TRAVELER 8180  
 BOYD FOREVER LADY 8003  
 S A F 598 BANDO 5175  
 S A V MAY 7238

PAPA FORTE 1921  
**ROYAL PATRICIA DRSS 4029P**  
 ROYAL PATRICIA DRCC 2039M

PAPA OPTIMA 9818  
 PAPA ENVIOUS BLACKBIRD 8832  
 TWIN VALLEY PRECISION E161  
 THOMAS PATRICIA 0603

	BW	WW	YW	MILK	T.MAT.	CALV EASE	MAT CALV EASE
EPD	+0.6	+51	+93	+28	+54	+11.0	+13.0



## 25 JC CRAIG'S FOUR SEASON 14B

JCT 14B 1801864 APRIL 07, 2014 BW: 74  
 WEANED: OCTOBER 18, 2014 WW: 630 ADJ 205d WW: 736

S A V FOUR SEASONS 5231  
**JL OPEN SEASON 1015**  
 ROYAL PATRICIA DRCC 4029P

S A V 8180 TRAVELER 004  
 S A V MAY 2397  
 PAPA FORTE 1921  
 ROYAL PATRICIA DRCC 2039M

JL MARKET 0327  
**CRAIG'S TIMELESS LADY 76Z**  
 CRAIG'S TIMELESS LADY 77W

S A V BISMARCK 5682  
 HF EVENING TINGE 57R  
 FRL PR RITO 68'06  
 JC TIMELESS LADY 56H

	BW	WW	YW	MILK	T.MAT.	CALV EASE	MAT CALV EASE
EPD	+0.8	+49	+82	+27	+52	+10.0	+10.0

Recommended for heifers.

## 26 JC CRAIG'S FOUR SEASON 52B

**NOT REGISTERED** APRIL 15, 2014 BW: 81  
 WEANED: OCTOBER 18, 2014 WW: 675

S A V FOUR SEASONS 5231  
**JL OPEN SEASON 1015**  
 ROYAL PATRICIA DRCC 4029P

S A V 8180 TRAVELER 004  
 S A V MAY 2397  
 PAPA FORTE 1921  
 ROYAL PATRICIA DRCC 2039M

**34Z UNREGISTERED DAM**

Recommended for heifers.



# 27 JC CRAIG'S FOUR SEASON 66B



JCT 66B 1801779 APRIL 19, 2014 BW: 76  
 WEANED: OCTOBER 18, 2014 WW: 590 ADJ 205d WW: 729

S A V FOUR SEASONS 5231 S A V 8180 TRAVELER 004  
**JL OPEN SEASON 1015** S A V MAY 2397  
 ROYAL PATRICIA DRCC 4029P PAPA FORTE 1921  
 ROYAL PATRICIA DRCC 2039M

JL PLAYER 9095 S A V YOUNG JOCK 6457  
**CRAIG'S PRIDE 44Z** HFDF BLACKBIRD 92P  
 CRAIG'S PRIDE 67U FRL VISION 16M  
 CRAIG'S PRIDE 65P

	BW	WW	YW	MILK	T.MAT.	CALV EASE	MAT CALV EASE
EPD	+1.2	+50	+87	+21	+46	+7.0	+9.0

Recommended for heifers.




**AG-PLUS**  
504-1111  
MECHANICAL



**BRUCE JOHNSON**

PHONE: 403-504-1111  
 CELL: 403-502-6925  
 FAX: 403-504-1814  
 EMAIL: bjohnson@agplus.ca  
 www.agplusmechanical.com

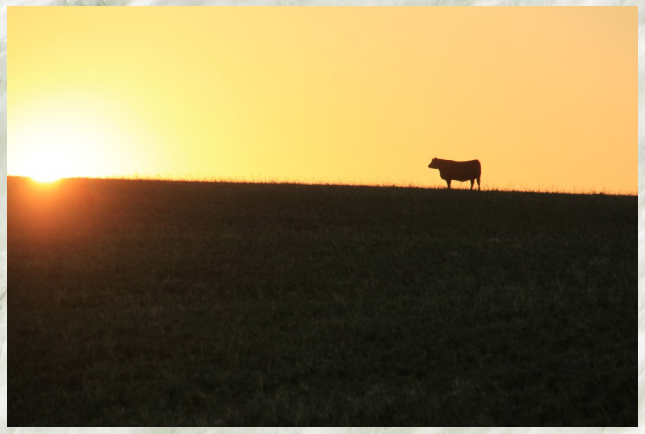
• SALES • PARTS • SERVICE • RENTAL •  
 "SETTING INDUSTRY STANDARDS IN CUSTOMER SERVICE"





Medicine Hat, AB  
 Box 55 T1A 7E5



# FORBES ANGUS

With my programs transition complete I present what is a small but powerful group of two year old bulls. These bulls are grown out and developed at a natural rate of growth. They are the complete picture, there is no guessing as to there potential . Raised and fed in a native grass pasture with lots of hills and room to run these two's are as athletic and solid footed as can be raised.

I base my program on longevity, well balanced and consistent herd sires. I own and maintain my own herd sires and have only in house cow families. I believe after 26 years this aspect gives me the advantage of knowing the genetics that I am offering are sound. Judging temperament, ability to maintain body condition, fertility, and their development as they age is not fully reflected in any performance data. These aspects are ultimately judged by the animals longevity. That starts with a solid bull from a proven program.

With that being said I would like to invite and welcome you to the " TOP CUT ". The last couple of years we have added some new members. This year we are welcoming the Brost Family and wish them much success. They add a fresh perspective and some extra hands to present our 24th annual sale.

Colin Forbes

## **F** REFERENCE SIRE YOUNG DALE **XON** 34X

YDF 34X 1564941 FEBRUARY 9, 2010

S A V 8180 TRAVELER 004  
**S A V 004 TRAVELER 8649**  
CHAMPION HILL GEORGINA 1949

SITZ TRAVELER 8180  
BOYD FOREVER LADY 8003  
WHITSTONE WIDESPREAD MB  
L L A GERGINA 419

HOFF FIRST EDITION 058 242  
**YOUNG DALE LADY SANDRA 54T**  
PAT LADY SANDRA 2C

HOFF HEAD OF THE CLASS SC534  
HOFF WITCH OF S C 7131 058  
RONAN TEX 56A  
DOUBLE J SANDRA 452Y

	BW	WW	YW	MILK	T.MAT.	CALV EASE	MAT CALV EASE
EPD	<b>+3.6</b>	<b>+71</b>	<b>+114</b>	<b>+13</b>	<b>+49</b>	<b>+1.0</b>	<b>+9.0</b>

The results are in and the numbers support what a great growth bull (Power Pack) is. Weaning weight EPD of +71 and a yearling EPD of +144 are both well above the breed average. He is a desirable combination of growth, carcass, testicular development and frame. A large bull but not extreme in any way but growth.



**28****FR POWER PACK 20B**FR 20B 1792042 FEBRUARY 13, 2014 BW: 88  
WEANED: OCTOBER 1, 2014 WW: 750 ADJ 205d WW: 678S A V 004 TRAVELER 8649  
**YOUNG DALE XON 34X**  
YOUNG DALE LADY SANDRA 54TS A V 8180 TRAVELER 004  
CHAMPION HILL GEORGINA 1949  
HOFF FIRST EDITION 058 242  
PAT LADY SANDRA 2CPAHL EXTREME 109S  
**FR SENORITA 5W**  
FR SENORITA 36HW C C PRECISION E161 J239  
REMITALL NEONIA 82J  
WINSTON SASKALTA 70F  
DELISLEHOLM PAULINA 99A

	BW	WW	YW	MILK	T.MAT.	CALV EASE	MAT CALV EASE
EPD	+2.6	+48	+79	+6	+30	+2.0	+8.0

**29****FR POWER PACK 52B**FR 52B 1792072 MARCH 1, 2014 BW: 92  
WEANED: OCTOBER 1, 2014 WW: 800 ADJ 205d WW: 770S A V 004 TRAVELER 8649  
**YOUNG DALE XON 34X**  
YOUNG DALE LADY SANDRA 54TS A V 8180 TRAVELER 004  
CHAMPION HILL GEORGINA 1949  
HOFF FIRST EDITION 058 242  
PAT LADY SANDRA 2C4DJ SAFARI GREENSTONE 46S  
**FR LADY ERICA 13W**  
FR LADY SCOTCHCAP 42SHI DIAMOND GREENSTONE 504  
HAPPYVALE ERICA  
FORBES SCOTCHCAP 40M  
FR LADY MAGIC 16N

	BW	WW	YW	MILK	T.MAT.	CALV EASE	MAT CALV EASE
EPD	+3.8	+60	+101	+10	+40	-1.0	+6.0

**30****FR POWER PACK 61B**FR 61B 1792079 MARCH 7, 2014 BW: 85  
WEANED: OCTOBER 1, 2014 WW: 690 ADJ 205d WW: 697S A V 004 TRAVELER 8649  
**YOUNG DALE XON 34X**  
YOUNG DALE LADY SANDRA 54TS A V 8180 TRAVELER 004  
CHAMPION HILL GEORGINA 1949  
HOFF FIRST EDITION 058 242  
PAT LADY SANDRA 2C4DJ SAFARI GREENSTONE 46S  
**FR BLACK LUCY 27X**  
FR BLACK LUCY 17RHI DIAMOND GREENSTONE 504  
HAPPYVALE ERICA  
EBON HILL ADVANTAGE 151'2000  
FR BLACK LUCY 26J

	BW	WW	YW	MILK	T.MAT.	CALV EASE	MAT CALV EASE
EPD	+2.7	+52	+91	+6	+32	+2.0	+8.0



Lot 30

**31****FR POWER PACK 75B**FR 75B 1792090 MARCH 18, 2014 BW: 75  
WEANED: OCTOBER 1, 2014 WW: 530 ADJ 205d WW: 548S A V 004 TRAVELER 8649  
**YOUNG DALE XON 34X**  
YOUNG DALE LADY SANDRA 54TS A V 8180 TRAVELER 004  
CHAMPION HILL GEORGINA 1949  
HOFF FIRST EDITION 058 242  
PAT LADY SANDRA 2CEBON HILL ADVANTAGE 151'2000  
**FR MISS MAGIC 54S**  
FORBES MISS 9440 55MEBON HILL MISS MAGIC MAN 41'97  
EBON HILL MISS COUNTESS 151'91  
JOHNSTON 9440 SCOTCHCAP 166J  
FR STOCK 2100 7E

	BW	WW	YW	MILK	T.MAT.	CALV EASE	MAT CALV EASE
EPD	+1.4	+40	+76	+5	+25	+7.0	+11.0

**32****FR POWER PACK 85B**FR 85B 1792098 MARCH 30, 2014 BW: 86  
WEANED: OCTOBER 1, 2014 WW: 625 ADJ 205d WW: 683S A V 004 TRAVELER 8649  
**YOUNG DALE XON 34X**  
YOUNG DALE LADY SANDRA 54TS A V 8180 TRAVELER 004  
CHAMPION HILL GEORGINA 1949  
HOFF FIRST EDITION 058 242  
PAT LADY SANDRA 2CPAHL EXTREME 109S  
**FR PRINCESS NEONIA 51U**  
FR PRINCESS GRALOTTE 20HW C C PRECISION E161 J239  
REMITALL NEONIA 82J  
WINSTON SASKALTA 70F  
FR GRALOTTE RITO 5C

	BW	WW	YW	MILK	T.MAT.	CALV EASE	MAT CALV EASE
EPD	+3.0	+47	+84	+7	+31	+2.0	+9.0

# 33

## FR POWER PACK 91B

FR 91B 1792101 APRIL 07, 2014 BW: 90  
WEANED: OCTOBER 1, 2014 WW: 730 ADJ 205d WW: 831

S A V 004 TRAVELER 8649  
**YOUNG DALE XON 34X**  
YOUNG DALE LADY SANDRA 54T

S A V 8180 TRAVELER 004  
CHAMPION HILL GEORGINA 1949  
HOFF FIRST EDITION 058 242  
PAT LADY SANDRA 2C

EBON HILL ADVANTAGE 151'2000  
**FR SENORITA 3T**  
FORBES SENORITA 19L

EBON HILL MAGIC MAN 41'97  
EBON HILL MISS COUNTESS 151'91  
JOHNSTON 9440 SCOTCHCAP 166J  
DELISLEHOLM PAULINA 99A7

	BW	WW	YW	MILK	T.MAT.	CALV EASE	MAT CALV EASE
EPD	+3.3	+61	+99	+8	+39	0.0	+7.0

# 34

## FR POWER PACK 99B

FR 99B 1792106 MAY 12, 2014 BW: 80  
WEANED: OCTOBER 1, 2014 WW: 500 ADJ 205d WW: 702

S A V 004 TRAVELER 8649  
**YOUNG DALE XON 34X**  
YOUNG DALE LADY SANDRA 54T

S A V 8180 TRAVELER 004  
CHAMPION HILL GEORGINA 1949  
HOFF FIRST EDITION 058 242  
PAT LADY SANDRA 2C

4DJ SAFARI GREENSTONE 46S  
**FR SENORITA 47X**  
FR SENORITA 7T

HI DIAMOND GREENSTONE 504  
HAPPYVALE ERICA  
EBON HILL ADVANTAGE 151'2000  
FR SENORITA 49H

	BW	WW	YW	MILK	T.MAT.	CALV EASE	MAT CALV EASE
EPD	+2.2	+53	+89	+9	+36	+3.0	+9.0



# G REFERENCE SIRE

## YOUNG DALE YUMA 97Y

YDF 94Y 1632385 MARCH 09, 2011

LAGRAND MAF ANTIDOTE 577S  
**YOUNG DALE KNOCK OUT 134U**  
YOUNG DALE ERICA 26N

G13 STRUCTURE  
MAPLE LANE FOREVER LADY 277  
YOUNG DALE HOT TALK 37L  
WINDOVER ERICA 27J

YOUNG DALE PISTOL PETE 75K  
**YOUNG DALE BLACKBIRD 107N**  
YOUNG DALE KRISTINA 11B

YOUNG DALE EQUATOR 032H  
CALLAMERE ELINE 21E  
L A MAGIC  
MCRAE'S KRISTINA 79T

	BW	WW	YW	MILK	T.MAT.	CALV EASE	MAT CALV EASE
EPD	+3.5	+54	+103	+14	+41	0.0	+5.0

He is moderate, stylish, correct and stout. His mother cow was a Canadian Elite Dam. A well balanced bull.

# 35

## FR KNOCKOUT 40B

FR 40B 1792060 FEBRUARY 23, 2014 BW: 88  
WEANED: OCTOBER 1, 2014 WW: 760 ADJ 205d WW: 714

YOUNG DALE KNOCKOUT 134U  
**YOUNG DALE YUMA 94Y**  
YOUNG DALE BLACKBIRD 107N

LAGRAND MAF ANTIDOTE  
YOUNG DALE ERICA 26N  
YOUNG DALE PISTOL PETE 75K  
YOUNG DALE KRISTINA 11B

FORBES SCOTCHCAP 40M  
**FR MISS 2100 33R**  
FORBES MISS 2100 4M

JOHNSTON 9440 SCOTCHCAP 166J  
FR BEATRICE STOCK 4D  
G T MAXIMUM  
FR GRALOTTE RITO 5C

	BW	WW	YW	MILK	T.MAT.	CALV EASE	MAT CALV EASE
EPD	+2.2	+39	+80	+5	+25	+4.0	+7.0

# 36

## FR KNOCKOUT 41B

FR 41B 1792061 FEBRUARY 23, 2014 BW: 95  
WEANED: OCTOBER 1, 2014 WW: 780 ADJ WW: 733

YOUNG DALE KNOCKOUT 134U  
**YOUNG DALE YUMA 94Y**  
YOUNG DALE BLACKBIRD 107N

LAGRAND MAF ANTIDOTE  
YOUNG DALE ERICA 26N  
YOUNG DALE PISTOL PETE 75K  
YOUNG DALE KRISTINA 11B

EASTONDALE ICEBERG 61'05  
**FR LADY ICE 49T**  
FR LADY MAGIC 16N

DRYLAND ICEBERG  
EASTONDALE ANNIE K 75'02  
EBON HILL ADVANTAGE 151'2000  
FR LADY STOCKMAN 31D

	BW	WW	YW	MILK	T.MAT.	CALV EASE	MAT CALV EASE
EPD	+4.0	+44	+86	+13	+35	-1.0	+5.0



**37****FR KNOCKOUT 95B**

FR 95B 1792103 APRIL 25, 2014 BW: 80  
 WEANED: OCTOBER 1, 2014 WW: 500 ADJ WW: 660

YOUNG DALE KNOCKOUT 134U LAGRAND MAF ANTIDOTE  
**YOUNG DALE YUMA 94Y** YOUNG DALE ERICA 26N  
 YOUNG DALE BLACKBIRD 107N YOUNG DALE PISTOL PETE 75K  
 YOUNG DALE KRISTINA 11B

4DJ SAFARI GREENSTONE 46S HI DIAMOND GREENSTONE 504  
**FR PRIME STAR 21Y** HAPPYVALE ERICA  
 FR PRIME STAR 50T EBON HILL ADVANTAGE 151'2000  
 FR LUCY STAR 28E

	BW	WW	YW	MILK	T.MAT.	CALV EASE	MAT CALV EASE
EPD	+1.7	+35	+77	+7	+25	+4.0	+7.0

## Thank you to our 2015 Buyers

**2 Half Circle Ranch**

**76 Grazing Coop**

**9 Bar Ranch Co. Ltd**

**Tim Anderson**

**Angus Hills Ranch**

**Darcy Berreth**

**Wade Boisjoli**

**Bryan Ranch**

**Cypress Colony**

**Eastondale Angus**

**Wade & Marlene Forbes**

**Harvey Friemark**

**Archie Gannon**

**Casey Gordon**

**Greenwald Enterprises**

**Hay Stock Grazing Co-op Ltd.**

**Horton Land & Cattle**

**Jeff Hughes**

**J Over T Welding**

**Tom Jansen**

**Wayne Jansen**

**Kusler Ranch**

**Karson Legault**

**Gary Martens**

**Darvin & Kris Mason**

**McLeod Cattle Co. Ltd.**

**Mikula Ranch**

**Stacey Obritsch**

**Pleasant Hill Farm Ltd.**

**Reynolds Farms**

**Braden Russel**

**Clint Seifert**

**Reg Shellenberg**

**Slade Ranch**

**Barry Unreiner**

**Brad Vilness**

**Wedrick Stock Farm**

**Randy Weiss**

**Grant & Rajanne Wills**

**Terry Winter**

**Winter Ranching**

# H REFERENCE SIRE

## MERIT 2015

TJL 2015Z 1684374 FEBRUARY 12, 2012

LUKENS 9440 SCOTCH CAP L463  
**MERIT LUKE 3120**  
 GLENNIE LADY ANN 23J

R R SCOTCHCAP 9440  
 G D A R FOREVER LADY 9163  
 GLENNIE SOCO RE 7E  
 GLENNIE LADY ANN 44C

SANDY BAR IDEAL 28S  
**MERIT SOCIALITE 197X**  
 MERIT SOCIALITE 3118

PRAIRELANE IDEAL 7451-2014  
 KORNFELD QUENETTE 807H  
 MINBURN MAIN EVENT 82K  
 MERIT SOCIALITE 8054

	BW	WW	YW	MILK	T.MAT.	CALV EASE	MAT CALV EASE
EPD	+1.7	+34	+66	+23	+40	+6.0	+5.0

He is a new calving ease sire that came highly recommended from the Merit Program. Used primarily on heifers, his offspring have been trouble free. A bull with a showy Angus head, Angus frame and lots of hair make him a favorite.



# 38

## FR LUKE 56B

FR 56B 1816375 MARCH 4, 2014 BW: 85  
 WEANED: OCTOBER 1, 2014 WW: 660 ADJ 205d WW: 623

MERIT LUCK  
**MERIT 2015**  
 MERIT SOCIALITE 197X

LUKENS 9440 SCOTCH CAP L463  
 GLENNIE LADY ANN 23J  
 SANDY BAR IDEAL  
 MERIT SOCIALITE

4DJ SAFARI GREENSTONE  
**FR SENORITA 54Y**  
 FR SENORITA 12N

HI DIAMOND GREENSTONE 504  
 HAPPYVALE ERICA  
 EBON HILL ADVANTAGE 151'2000  
 DELISLEHOLM PAULINA 99A

	BW	WW	YW	MILK	T.MAT.	CALV EASE	MAT CALV EASE
EPD	+2.6	+30	+61	+14	+29	+3.0	+5.0

# 39

## FR LUKE 90B

NON REGISTERED APRIL 08, 2014 BW: 80  
 WEANED: OCTOBER 1, 2014 WW: 550

MERIT LUCK  
**MERIT 2015**  
 MERIT SOCIALITE 197X

LUKENS 9440 SCOTCH CAP L463  
 GLENNIE LADY ANN 23J  
 SANDY BAR IDEAL  
 MERIT SOCIALITE

TJF AMBUSH 9X  
**FR MISS NEONIA 5Z**  
 FR MISS NEONIA 39W

# 40

## FR LUKE 97B

FR 97B 1816367 APRIL 26, 2014 BW: 78  
 WEANED: OCTOBER 1, 2014 WW: 750 ADJ WW: 741

MERIT LUCK  
**MERIT 2015**  
 MERIT SOCIALITE 197X

LUKENS 9440 SCOTCH CAP L463  
 GLENNIE LADY ANN 23J  
 SANDY BAR IDEAL  
 MERIT SOCIALITE

4DJ SAFARI GREENSTONE  
**FR LADY ERICA 33Y**  
 FORBES LADY LASS 5M

HI DIAMOND GREENSTONE 504  
 HAPPYVALE ERICA  
 COLDSTREAM BONNIE DOON 29H  
 FR LADY WINSTON 16H

	BW	WW	YW	MILK	T.MAT.	CALV EASE	MAT CALV EASE
EPD	+1.3	+34	+62	+19	+36	+7.0	+9.0





# REFERENCE SIRE

## NORSEMAN FRONTIER 32'11

NORS 32Y 1645965 JANUARY 20, 2011

LLB NEW FRONTIER 81N  
**NORSEMAN FRONTIER 2'07**  
 MERIT COUNTESS 3211

B/R NEW FRONTIER 095  
 ISLA BANK PRINCESS ANNIE 4L  
 CUDLOBE HOGAN 79L  
 MERIT COUNTESS 91K

GDAR QUANTUM 963  
**CRESCENT CREEK HEROINE 99M**  
 CRESENT CREEK LADY BATE 18K

C H QUANTUM 3330  
 G D A R MISS KEM 080  
 CRESCENT CREEK LEGEND 148G  
 CRESCENT CREEK LADY BATE 93B



	BW	WW	YW	MILK	T.MAT.	CALV EASE	MAT CALV EASE
EPD	+2.7	+46	+81	+16	+39	0.0	+6.0

Sires frame and growth with modest birth weights. They are distinguished by their feet, hair and legs. His mother cow was a Canadian elite dam.

# 41 FR FRONTIER 51B

FR 51B 1792071 MARCH 1, 2014 BW: 86  
 WEANED: OCTOBER 1, 2014 WW: 680 ADJ WW: 682

NORSEMAN FRONTIER 2'07  
**NORSEMAN FRONTIER 32'11**  
 CRESCENT CREEK HEROINE 99M

LLB NEW FRONTIER 81N  
 MERIT COUNTESS  
 GDAR QUANTUM 963  
 CRESCENT CREEK LADY BATE 18K

WINSTON SASKALTA 70F  
**FR TRADITION 11J**  
 DELISLEHOLM BONNIE 43Z

ANGUS ACRES WINSTON 249B  
 PRINCESS OLE SASKALTA 70B  
 DELMORAIN ROCHESTER 2W  
 DELISLEHOLM BONNIE 43T



Lot 41

	BW	WW	YW	MILK	T.MAT.	CALV EASE	MAT CALV EASE
EPD	+2.5	+30	+49	+16	+31	+1.0	+5.0



**Shane Pender**  
 Territory Manager

1950 Brier Park Road N.W.  
 Medicine Hat, Alberta  
 T1C 1V3

Tel: 403 527 5600  
 Cell: 403 502 2621  
 Fax: 403 526 2393  
 Toll Free: 800 563 4884  
 shane.pender@nutreco.ca  
 www.landmarkfeeds.com



**CHEVROLET • BUICK • GMC**  
**MAPLE CREEK**

P.O. BOX 1388, MAPLE CREEK, SK S0N 1N0  
 TELEPHONE: (306) 662-2622 FAX: (306) 662-2640  
 CELL: 661-7686  
 EMAIL: kmulatz.murray@sasktel.net

**Kevin Mulatz**  
 SALES MANAGER

**Buyer's Draw Sponsor**

# BEAR CREEK ANGUS

Directions to Ranch: 4 miles south of Piapot and 1 1/2 miles west

I'm very excited for this year's sale and would like to welcome Leif and Mellissa Brost to it. I feel there will be a very good cross-section of bulls provided from four consignors. All of us raise ranch-oriented Angus cattle, which to me means cattle that work for the producer, not the other way around.

My bulls are bred for functionality first and foremost with strict attention paid to feet, udders, and fertility. There are many tools at a person's disposal to help one's breeding program, but for us nothing surpasses the time-tested method of culling and castrating. I believe in selling bulls I would use personally, thus we're very hard on our cows, demanding excellence and strict on the bull calves retained for the sale. Buy with confidence and in the event of customer dissatisfaction I stand behind our bulls.

My program remains calving in April and to ensure maturity, retaining the bulls until two-year olds. As calves, they are wintered on a growing ration then turned out on grass in the middle of April. They are brought in at the end of December and fed a ration of tub-ground hay, silage and screening pellets. Vaccinated with 7-way containing Haemophilus; IBR/PI3/IBR, they've also received magnets. They are ready to go to work.

Any bulls returning home must be insured and will be delivered by the middle of April

I'm very proud to offer these bulls and hope everyone will find what they are searching for in their next sire. Please do not hesitate to call or stop by the ranch to view the bulls and our program. Our website: [www.bearcreekangus.ca](http://www.bearcreekangus.ca) also hosts pictures of the sires and many of the dams

Hopefully we'll see you at the sale.

Chad, Nikki and Keira Weiss

Website: [www.bearcreekangus.ca](http://www.bearcreekangus.ca)  
 House: 1-306-558-0011  
 Chad's Cell: 1-306-662-7060  
 Email: [wick\\_weiss35@hotmail.com](mailto:wick_weiss35@hotmail.com)



FOR ALL BULLS

WEANING WEIGHT DATE: OCTOBER 11, 2014

YEARLING WEIGHT DATE: APRIL 18, 2015

## J REFERENCE SIRE SSA 4336 DENSITY 26T

SSA 26T 1407805 JANUARY 24, 2007

S A V 8180 TRAVELER 004  
**S A V 004 DENSITY 4336**  
 S A V MAY 7238

SITZ TRAVELER 8180  
 BOYD FOREVER LADY 8003  
 LEACHMAN RIGHT TIME  
 S A R PROSPECTOR MAY 9124

CUDLOBE RAINMAKER 39K  
**SOUTH SHADOW RUBY 12N**  
 SOUTH SHADOW RUBY 63L

STEVENSON RAINMAKER 630G  
 CUDLOBE KYMA 18H  
 SOUTH SHADOW OVER DRIVE 27J  
 EARLY SUNSET RUBY 54G

	BW	WW	YW	MILK	T.MAT.	CALV	MAT CALV EASE
EPD	+2.0	+43	+84	+10	+34	+4.1	+6.7

This is our cornerstone Herdsire. Enough good cannot be said about what he's done for our program. He was one of the most complete angus bulls we ever owned, with true angus character. Sound and naturally breeding cows until 8 years of age, we are only just seeing the true mark he's left as his daughters mature into top-producing cows



**42****BEAR CREEK DENSITY 393B**WBA 393B 1786437 APRIL 04, 2014 BW: 85  
WW: 705 ADJ 205d WW: 754 YW: 1254S A V 004 DENSITY 4336  
**SSA 4336 DENSITY 26T**  
SOUTH SHADOW RUBY 12NS A V 8180 TRAVELER 004  
S A V MAY 7238  
CUDLOBE RAINMAKER 39K  
SOUTH SHADOW RUBY 63LMVF WIDESPREAD 273P  
**MVP TIBBIE 393T**  
MVF TIBBIE 877PWESTERN WIDESPREAD 1L  
MVF ELLEN 111J  
S A F 598 BANDO 5175  
MVF TIBBIE 68K

	BW	WW	YW	MILK	T.MAT.	CALV EASE	MAT CALV EASE
EPD	+2.2	+52	+89	+17	+43	+4.0	+8.0

Herd sire prospect. I've had several excellent bulls from this cow, a widespread daughter, but this is the cream of the crop. Off our 26T bull, the female excellence bred into the bull is incredible. He has style, muscle, length, angus character, with no faults on the fundamentals. If you're going to drive to see a bull, this one is worth it. Maternal brother went to Wade Boisjoli and Howard Bock.

**43****BEAR CREEK DENSITY 17B**CBW 17B 1786450 APRIL 25, 2014 BW: 94  
WW: 671 ADJ 205d WW: 794 YW: 1232S A V 004 DENSITY 4336  
**SSA 4336 DENSITY 26T**  
SOUTH SHADOW RUBY 12NS A V 8180 TRAVELER 004  
S A V MAY 7238  
CUDLOBE RAINMAKER 39K  
SOUTH SHADOW RUBY 63LIRONWOOD NEW LEVEL  
**VALLEYHILLS GEORGINA WYE 17S**  
VALLEYHILLS GEORGINA WYE 36PIRONWOOD NEW DESIGN 022 701  
WARDENS BLACKCAP 6148 6309  
GARDENS PRIME TIME  
VALLEYHILLS GEORGINA WYE 97H

	BW	WW	YW	MILK	T.MAT.	CALV EASE	MAT CALV EASE
EPD	+2.2	+46	+87	+21	+44	+5.0	+6.0

A really long-spined bull, trademark of his sire 26T. This bull should throw lots of performance and raise excellent calves.

**44****BEAR CREEK DENSITY 71B**CBW 71B 1786449 APRIL 24, 2014 BW: 77  
WW: 572 ADJ 205d WW: 674 YW: 1065S A V 004 DENSITY 4336  
**SSA 4336 DENSITY 26T**  
SOUTH SHADOW RUBY 12NS A V 8180 TRAVELER 004  
S A V MAY 7238  
CUDLOBE RAINMAKER 39K  
SOUTH SHADOW RUBY 63LCHICO HANNIBAL 43H  
**ISLA BANK AUGUSTA 71P**  
ISLA BANK AUGUSTA 21ATC STOCKMAN 365  
CHICO ROSEBUD 2E  
G V CORNHUSKER 584  
ISLA BANK AUGUSTA 45U

	BW	WW	YW	MILK	T.MAT.	CALV EASE	MAT CALV EASE
EPD	+1.6	+36	+69	+13	+31	+6.0	+10.0

A well-built heifer bull. A full brother worked in Reg Shellenberg's herd, another in Archie Gannon's. Along with maternal brothers to Ross Anderson, Don Wilk and one successfully working on our own heifers (reference sire 71Z). A sure bet heifer bull doesn't come along much better than this one.



**45****BEAR CREEK DENSITY 350B**CBW 350B 1786537 APRIL 08, 2014 BW: 85  
WW: 590 ADJ 205d WW: 642 YW: 1068S A V 004 DENSITY 4336  
**SSA 4336 DENSITY 26T**  
SOUTH SHADOW RUBY 12NS A V 8180 TRAVELER 004  
S A V MAY 7238  
CUDLOBE RAINMAKER 39K  
SOUTH SHADOW RUBY 63LREMINGTON SPARTAN 93R  
**LLB ELINE ERICA 350W**  
ERICA OF TULLAMORE 3HANGUS ACRES SPARTAN 160L  
LAZY J ROYAL LADY 60G  
WESTWIND RITO 8503 D J H 019  
ANGUS HILL ELINE ERICA 3A

	BW	WW	YW	MILK	T.MAT.	CALV EASE	MAT CALV EASE
EPD	+2.4	+37	+72	+11	+30	+4.0	+6.0

A nice long, clean made bull with lost of angus character.

**46****BEAR CREEK DENSITY 119B**CBW 119B 1786536 MARCH 30, 2014 BW: 81  
WW: 689 ADJ 205d WW: 720 YW: 1240S A V 004 DENSITY 4336  
**SSA 4336 DENSITY 26T**  
SOUTH SHADOW RUBY 12NS A V 8180 TRAVELER 004  
S A V MAY 7238  
CUDLOBE RAINMAKER 39K  
SOUTH SHADOW RUBY 63L20/20 SHOW OFF 29R  
**MJT MARLENE 119W**  
MJT MARLENE 321RPRIME TIME'S SHOW OFF 721'01  
DMM MISS ESSENCE 99K  
ABEL ELDORADO 9M  
MJT MARLENE 44N

	BW	WW	YW	MILK	T.MAT.	CALV EASE	MAT CALV EASE
EPD	+1.5	+44	+81	+14	+36	+5.0	+7.5

I've touted about 26T's calves for years; come and see for yourself. 119B fits the mold with length, muscle, correct feet and legs.

**47****BEAR CREEK DENSITY 248B**CBW 248B 1786468 MAY 06, 2014 BW: 87  
WW: 551 ADJ 205d WW: 689 YW: 1071S A V 004 DENSITY 4336  
**SSA 4336 DENSITY 26T**  
SOUTH SHADOW RUBY 12NS A V 8180 TRAVELER 004  
S A V MAY 7238  
CUDLOBE RAINMAKER 39K  
SOUTH SHADOW RUBY 63LLLB TRADITION 440S  
**LLB BLACKCAP PEARL 248U**  
LLB BLACKCAP PEARL 610SSITZ TRADITION RLS 8702  
LLB EXQUISITE LADY 235N  
BELVIN KINGPIN 24'00  
DOUBLE J BLACKCAP 610C

	BW	WW	YW	MILK	T.MAT.	CALV EASE	MAT CALV EASE
EPD	+3.0	+42	+77	+12	+33	+3.0	+6.0

I'm repeating myself.

**48****BEAR CREEK DENSITY 5B**CBW 5B 1786465 APRIL 08, 2014 BW: 89  
WW: 651 ADJ 205d WW: 708 YW: 1197S A V 004 DENSITY 4336  
**SSA 4336 DENSITY 26T**  
SOUTH SHADOW RUBY 12NS A V 8180 TRAVELER 004  
S A V MAY 7238  
CUDLOBE RAINMAKER 39K  
SOUTH SHADOW RUBY 63LDURALTA 429M TIME ZONE 30R  
**CBW BLACKBIRD 5U**  
CALLAMERE BLACKBIRD 56RKBJ CONQUOR 429M  
FREYBURN LADY 7L  
BELL 2164 STOCKMAN 9K  
CALLAMERE BLACKBIRD 35K

	BW	WW	YW	MILK	T.MAT.	CALV EASE	MAT CALV EASE
EPD	+2.1	+41	+79	+13	+34	+1.0	+3.0

The mother of 5B has raised a lot of good bulls for me and this is no exception. She is also the great grandmother of 30B. He may be a red carrier; I will have results by sale day.

**K REFERENCE SIRE  
CRESCENT CREEK PACESETTER 78Z**

WOS 78Z 1665289 FEBRUARY 06, 2012

LOOKOUT PACESETTER 258M  
**CRESCENT CREEK PACESETTER 16U**  
CRESCENT CREEK STUMPIE 9RWILLABAR AMBUSH 45G  
GRASSY LANES MILLY 29U  
CRESCENT CREEK ALLIANCE 29N  
FIGURE 8 ANGUS STUMPIE 12NCUDLOBE MONEYMAKER 79U  
**CRESCENT CREEK CRUSHMAID 106X**  
DRYLAND CRUSHMAID 73ZSTEVENSON MONEYMAKER R185  
STEVENSON CLOVA PRIDE L901  
DRYLAND CHIEF 30T  
DRYLAND CRUSH MAID 53E

	BW	WW	YW	MILK	T.MAT.	CALV EASE	MAT CALV EASE
EPD	-0.2	+32	+57	+15	+35	+5.3	+7.6

This is a uniquely bred and standout heifer bull we purchased from Crescent Creek Angus several years ago. His daughters are now calving, and fit the bill. He transmits his incredible depth of body and muscle to his calves, making them some the easiest fleshing cattle available. We're very proud of this bull and his progeny.

**K**

# 49 BEAR CREEK PACESETTER 44B

WBA 44B 1786446 APRIL 11, 2014 BW: 79  
 WW: 584 ADJ 205d WW: 719 YW: 1094

CRESCENT CREEK PACESETTER 16U  
**CRESCENT CREEK PACESETTER 78Z**  
 CRESCENT CREEK CRUSHMAID 106X

LOOKOUT PACESETTER 258M  
 CRESCENT CREEK STUMPIE 9R  
 CUDLOBE MONEYMAKER 79U  
 DRYLAND CRUSHMAID 73Z

CONNEALY CONSENSUS 7229  
**BEAR CREEK LAVANDER LADY 44Z**  
 BEAR CREEK LAVANDER LADY 56'05

CONNEALY CONSENSUS  
 BLUE LILLY OF CONANGA 16  
 NEW FORCE THUNDER 02N  
 EBON HILL LAVANDER LADY 356'03

	BW	WW	YW	MILK	T.MAT.	CALV EASE	MAT CALV EASE
EPD	+1.2	+47	+75	+18	+42	+5.0	+7.0

This bull is herdsire worthy. He's a deep ribbed, stout, excellent Angus bull. His mother is a gorgeous little Consensus daughter. I seriously considered keeping him, so study him well. This bull should work on good size heifers of the same breed.



# 50 BEAR CREEK PACESETTER 30B

CBW 30B 1786554 MAY 6, 2014 BW: 76  
 WW: 512 ADJ 205d WW: 716 YW: 1085

CRESCENT CREEK PACESETTER 16U  
**CRESCENT CREEK PACESETTER 78Z**  
 CRESCENT CREEK CRUSHMAID 106X

LOOKOUT PACESETTER 258M  
 CRESCENT CREEK STUMPIE 9R  
 CUDLOBE MONEYMAKER 79U  
 DRYLAND CRUSHMAID 73Z

MYTTY IN FOCUS  
**BEAR CREEK 10X BLACKBIRD 30Z**  
 BEAR CREEK BLACKBIRD 10X

S A F FOCUS OF E R  
 MYTTY COUNTLESS 906  
 S A V FINAL ANSWER 0035  
 CBW BLACKBIRD 5U

	BW	WW	YW	MILK	T.MAT.	CALV EASE	MAT CALV EASE
EPD	-1.0	+44	+79	+20	+42	+10.0	+12.0

Recommended for Heifers. This bull comes stacked from several first-calf mothers bred to the likes of Final Answer, In Focus, and Pacesetter. He may also be a red carrier; will have results by sale day.

# 51 BEAR CREEK PACESETTER 59B

WBA 59B 1786447 APRIL 05, 2014 BW: 62  
 WW: 549 ADJ 205d WW: 664 YW: 1002

CRESCENT CREEK PACESETTER 16U  
**CRESCENT CREEK PACESETTER 78Z**  
 CRESCENT CREEK CRUSHMAID 106X

LOOKOUT PACESETTER 258M  
 CRESCENT CREEK STUMPIE 9R  
 CUDLOBE MONEYMAKER 79U  
 DRYLAND CRUSHMAID 73Z

SSA 4336 DENSITY 26T  
**BEAR CREEK 66S BLACKCAP 59Z**  
 OTA BOYD NEW DAY 66S

S A V 004 DENSITY 4336  
 SOUTH SHADOW RUBY 12N  
 BOYD NEW DAY 8005  
 OTA BLACKCAP 37L

	BW	WW	YW	MILK	T.MAT.	CALV EASE	MAT CALV EASE
EPD	-1.6	+38	+66	+15	+34	+12.0	+12.0

Recommended for heifers. From a nice 26T daughter with an excellent Boyd New Day grandmother, this bull has a lot of maternal strength and has really developed into a hard muscled, strong topped bull



# L REFERENCE SIRE STANDARD HILL YAHOO 61Y

LES 61Y 1614949 FEBRUARY 11, 2011

HF KODIAK 5R  
HF TIGER 5T  
HF ECHO 84R

SANDY BAR ADVANTAGE 43M  
WILBAR RUBY 955N  
TC FREEDOM 104  
HFDF ECHO 6N

RITO 616 OF 4B20 6807  
STANDARD HILL LADY ANN 20T  
STANDARD HILL LADY ANN 45M

D H D TRAVELER 6807  
RITA 4820 OFB1 BANDO  
R P 3RD BUSHWACKER  
STANDARD HILL LADY ANN 6K

	BW	WW	YW	MILK	T.MAT.	CALV EASE	MAT CALV EASE
EPD	+1.0	+52	+97	+25	+51	+8.0	+5.0

An excellent, soft-made Tiger son with a tidier head than most Tiger sons'. This bull is eye-catching and hard to fault; he has a large solid foot, good mass, and excellent muscling.



## 52

# BEAR CREEK BOSS 56B

WBA 56B 1802064 APRIL 20, 2014 BW: 89  
WW: 610 ADJ 205d WW: 730 YW: 1149

HF TIGER 5T  
STANDARD HILL YAHOO 61Y  
STANDARD HILL LADY ANN 20T

HF KODIAK 5R  
HF ECHO 84R  
RITO 616 OF 4B20  
STANDARD HILL LADY ANN 45M

EBON HILL BLACK POWER 41'99  
EBON HILL LAVENDER LADY 356'03  
EBON HILL LAVENDER LADY 256'97

BELVIN BLACK MAGIC 42'92  
ISLA BANK PRIME BEAUTY 7E  
WIWA CREEK STOCKMAN 43'93  
EBON HILL LAVENDER LADY 255'93

	BW	WW	YW	MILK	T.MAT.	CALV EASE	MAT CALV EASE
EPD	+3.2	+46	+82	+14	+37	+2.0	+4.0

I really like this bull, he's a strong built Tiger son, with length and Angus character. We retained a maternal brother a few years ago for our own use. This bull's mother was a great producer, working for 12 years for us.



## 53

# BEAR CREEK BLAKE 32B

CWB 32B 1802063 APRIL 20, 2014 BW: 92  
WW: 574 ADJ 205d WW: 698 YW: 1137

HF TIGER 5T  
STANDARD HILL YAHOO 61Y  
STANDARD HILL LADY ANN 20T

HF KODIAK 5R  
HF ECHO 84R  
RITO 616 OF 4B20  
STANDARD HILL LADY ANN 45M

SSA 4336 DENSITY 26T  
BEAR CREEK LASS 32Y  
YOUNG DALE LASS 49R

S A V 004 DENSITY 4336  
SOUTH SHADOW RUBY 12N  
YOUNG DALE GABRIEL 7L  
YOUNG DALE LASS 527M

	BW	WW	YW	MILK	T.MAT.	CALV EASE	MAT CALV EASE
EPD	+4.0	+52	+93	+17	+43	+1.0	+3.0

Off of a really nice 26T daughter, this bull should work well in anyone's herd.





# M REFERENCE SIRE

## STANDARD HILL YAHOO 68Y

LES 68Y 1614955 FEBRUARY 13, 2011

HF KODIAK 5R  
**HF TIGER 5T**  
 HF ECHO 84R

SANDY BAR ADVANTAGE 43M  
 WILBAR RUBY 955N  
 TC FREEDOM 104  
 HFDF ECHO 6N

SCA 3299 OF IDEAL 1418  
**STANDARD HILL LASSIE 39U**  
 STANDARD HILL LASSIE 29P

IDEAL 1418 OF 8103  
 SCA 16E OF IDEAL 033  
 CONNEALY BOTTOMLINE  
 STANDARD HILL LASSIE 25M

	BW	WW	YW	MILK	T.MAT.	CALV EASE	MAT CALV EASE
EPD	<b>+5.0</b>	<b>+63</b>	<b>+106</b>	<b>+23</b>	<b>+55</b>	<b>-1.0</b>	<b>-2.0</b>

A large, rugged, ultra long, powerful Tiger son. He has perfect feet and leg structure, to go with that performance and his daughters in large part are proving to be feminine, broody cows.

# 55 BEAR CREEK TIGER 18B

CBW 18B 1786541 APRIL 7, 2014 BW: 88  
 WW: 601 ADJ 205d WW: 666 YW: 1212

HF TIGER 5T  
**STANDARD HILL YAHOO 68Y**  
 STANDARD HILL LASSIE 39U

HF KODIAK 5R  
 HF ECHO 84R  
 SC 3299 OF IDEAL 1418  
 STANDARD HILL LASSIE 29P

S A V FINAL ANSWER 0035  
**BEAR CREEK 60R BLACKCAP 18X**  
 VALLEYHILLS BLACKCAP 60R

SITZ TRAVELER 8180  
 S A V EMULOUS 8145  
 J D DAIGGER 901  
 VALLEYHILLS BLACKCAP 15F

	BW	WW	YW	MILK	T.MAT.	CALV EASE	MAT CALV EASE
EPD	<b>+2.4</b>	<b>+53</b>	<b>+98</b>	<b>+18</b>	<b>+45</b>	<b>+5.0</b>	<b>+6.0</b>

Similar to 2B, little more length of body than most bulls.

# 57 BEAR CREEK TIGER 416B

**NON REGISTERED** APRIL 12, 2014 BW: 88  
 WW: 603 YW: 1120

HF TIGER 5T  
**STANDARD HILL YAHOO 68Y**  
 STANDARD HILL LASSIE 39U

HF KODIAK 5R  
 HF ECHO 84R  
 SC 3299 OF IDEAL 1418  
 STANDARD HILL LASSIE 29P

NETWORTH 4200  
**T44**  
 5 - 144

From a Net Worth commercial cow. This entire cow family behind this bull has utterly perfect udders, which is why she has ran with the registered cows. This bull will sire some beautiful females.

# 54 BEAR CREEK TIGER 2B

WBA 2B 1786439 APRIL 04, 2014 BW: 96  
 WW: 689 ADJ 205d WW: 736 YW: 1313

HF TIGER 5T  
**STANDARD HILL YAHOO 68Y**  
 STANDARD HILL LASSIE 39U

HF KODIAK 5R  
 HF ECHO 84R  
 SC 3299 OF IDEAL 1418  
 STANDARD HILL LASSIE 29P

SSA 4336 DENSITY 26T  
**WBA ROSEGAY 2W**  
 CALLAMERE ROSEGAY 26P

S A V 004 DENSITY 4336  
 SOUTH SHADOW RUBY 12N  
 DOUBLE AA BLACKMAN 267'98  
 CALLAMERE ROSEGAY 59F

	BW	WW	YW	MILK	T.MAT.	CALV EASE	MAT CALV EASE
EPD	<b>+4.7</b>	<b>+52</b>	<b>+96</b>	<b>+19</b>	<b>+45</b>	<b>-1.0</b>	<b>0.0</b>

The biggest, most powerful bull we have on offer. He's long, full of meat, and tons of performance. From one of our best cows, another 26T daughter. Maternal brother went to Gary Martens

# 56 BEAR CREEK TIGER 310B

WBA 310B 1786436 APRIL 11, 2014 BW: 86  
 WW: 625 ADJ 205d WW: 690 YW: 1102

HF TIGER 5T  
**STANDARD HILL YAHOO 68Y**  
 STANDARD HILL LASSIE 39U

HF KODIAK 5R  
 HF ECHO 84R  
 SCA 3299 OF IDEAL 1418  
 STANDARD HILL LASSIE 29P

MVF NEW FRONTIER 803N  
**MVMM ERICETTE 310T**  
 MVF ERICETTE 54F

B/R NEW FRONTIER 095  
 GREENBUSH TIBBIE 5H  
 CENTURY TOUCHSTONE 131  
 OLE SASKALTA ERICETTE 457D

	BW	WW	YW	MILK	T.MAT.	CALV EASE	MAT CALV EASE
EPD	<b>+2.9</b>	<b>+48</b>	<b>+80</b>	<b>+20</b>	<b>+44</b>	<b>+4.0</b>	<b>+3.0</b>

Smaller framed than his half-brothers, 310T his mother did an incredible job raising great calves. This is a nice complete bull.





## N REFERENCE SIRE BEAR CREEK CONSENSUS 71Z

CBW 71Z 1668931 MARCH 24, 2012

CONNEALY CONSENSUS  
**CONNEALY CONSENSUS 7229**  
BLUE LILLY OF CONANGA 16

KMK ALLIANCE 6595  
BLINDA OF CONANGA 004  
WOODHILL ADMIRAL 77K  
BLUE CASH OF CONANGA 6020

CHICO HANNIBAL 43H  
**ISLA BANK AUGUSTA 71P**  
ISLA BANK AUGUSTA 21A

TC STOCKMAN 365  
CHICO ROSEBUD 2E  
G V CORNHUSKER 584  
ISLA BANK AUGUSTA 45U

	BW	WW	YW	MILK	T.MAT.	CALV EASE	MAT CALV EASE
EPD	+1.3	+45	+85	+18	+43	+4.8	+9.5

Another 71P son, this one from Conneally Consensus 7229. We've successfully used this bull on heifers for several years. He is a correct, heavy muscled bull with a model angus head.



## 58 BEAR CREEK CONSENSUS 62B

WBA 62B 1786448 APRIL 08, 2014 BW: 78  
WW: 534 ADJ 205d WW: 655 YW: 1140

CONNEALY CONSENSUS 7229  
**BEAR CREEK CONSENSUS 71Z**  
ISLA BANK AUGUSTA 71P

CONNEALY CONSENSUS  
BLUE LILLY OF CONANGA 16  
CHICO HANNIBAL 43H  
ISLA BANK AUGUSTA 21A

SSA 4336 DENSITY 26T  
**BEAR CREEK 8W BLACKBIRD 62Z**  
WBA BENNETT BLACKBIRD 8W

S A V 004 DENSITY 4336  
SOUTH SHADOW RUBY 12N  
K C F BENNETT TOTAL  
EBON HILL BLACKBIRD 278'03

	BW	WW	YW	MILK	T.MAT.	CALV EASE	MAT CALV EASE
EPD	+2.2	+43	+85	+15	+37	+4.0	+8.0

Recommended for heifers. This bull's mother is a twin, off of 26T and her mother 8W is a tremendous cow from Bennett Total.



**BUYER'S DRAW SPONSOR**



# HAWKEYE RANCHING COMPANY LTD.

We would like to welcome everyone to this years Top Cut Bull Sale. Our family would like to thank the fellow contributors for allowing us to consign to this outstanding reputable sale.

Our family has seen a lot of changes over the last year and a bit, with our relocation to Tompkins, from Irvine. The transition has been fairly smooth and would like to thank everyone for being very welcoming. As you look through our offering you will notice that we are very aggressive in the pursuit of using the best genetics that we can find. We are currently in expansion mode and found that with the use of artificial insemination and embryo work that we have been able to expand, as well as improve our quality, at an exponentially faster rate.

In the past we have sold most of our bulls by private treaty to many repeat customers, a fact which we are very proud of. Hopefully we have something that suits your need. If not I am sure you will be able to find it within one of the other consignments. Buy with confidence because we stand behind our bulls. We are not happy unless you are.



Leif, Melissa, Emma, Kolt & Manni Brost

## **O** REFERENCE SIRE WIWA CREEK **RUSH LAKE** 71'12

PDE 71Z 1663194 JANUARY 10, 2012

HF KODIAK 5R  
**SOO LINE MOTIVE 9016**  
TLA BEAUTY 5R

SANDY BAR ADVANTAGE 43M  
WILBAR RUBY 955N  
RR 7407 RAINMAKER 2154  
TERRLENE BEAUTY 35F

WIWA CREEK FULLBACK 19'07  
**WIWA CREEK PRIDE 63'10**  
WIWA CREEK PRIDE 94'06

VALLEY BLOSSOM FULLBACK 763R  
WIWA CREEK MISS QUALITY 2'01  
SAR STOCKMAN 84L  
WIWA CREEK PRIDE 37K



	BW	WW	YW	MILK	T.MAT.	CALV	MAT CALV EASE
EPD	<b>+2.1</b>	<b>+63</b>	<b>+94</b>	<b>+18</b>	<b>+53</b>	<b>+5.3</b>	<b>+3.5</b>

Rush Lake first come on the scene when he sold for \$73,000 at Agribition. We knew we wanted to add him to our program because of the generations of top cows in his pedigree. The first daughters have started calving and are living up to our expectations. This is one of the only sales that you can acquire sons of the good breeding bull so make sure you do not miss out.

# 59

## HE 71Z RUSH LAKE 60C

HE 60C 1885494 JANUARY 13, 2015 BW: 88  
WEANED: SEPTEMBER 20, 2015 WW: 894

SOO LINE MOTIVE 9016  
**WIWA CREEK RUSH LAKE 71'12**  
WIWA CREEK PRIDE 63'10

HF KODIAK 5R  
TLA BEAUTY 5R  
WIWA CREEK FULLBACK 19'07  
WIWA CREEK PRIDE 94'06

REMITALL PLAYBOY 4P  
**REMITALL BARBARA 851T**  
LLB BARBARA 422P

LLB NIGHT TRAIN 106M  
BELVIN LADY BLOSSOM 28'02  
RRB RIGHT TIME 154L  
LLB BARBARA 315M



Lot 59

	BW	WW	YW	MILK	T.MAT.	CALV EASE	MAT CALV EASE
EPD	+3.0	+51	+84	+18	+43	+3.0	+4.0

Here is a big stretchy calf out of an absolutely rock solid cow. Tremendous maternal value in this guy with terrific performance. Dam goes back to the two time Agribition Reserve Champion Lady Blossom cow. We have some sisters in the herd and a son at the PFRA. Jan 19<sup>th</sup> wt 1250lbs

# 60

## HE 71Z RUSH LAKE 77C

HE 77C 1885496 FEBRUARY 4, 2015 BW: 84  
**TWIN** WEANED: SEPTEMBER 20, 2015 WW: 770

SOO LINE MOTIVE 9016  
**WIWA CREEK RUSH LAKE 71'12**  
WIWA CREEK PRIDE 63'10

HF KODIAK 5R  
TLA BEAUTY 5R  
WIWA CREEK FULLBACK 19'07  
WIWA CREEK PRIDE 94'06

HF FREEDOM 99L  
**HEATHERBROOK MISS MORRISON 24P**  
HF MISS MORRISON 3E

O G L BATTLE CRY 427  
HF BLACKBIRD 27C  
MVHF DREAMWALKER 29A  
ALBERN MISS MORRISON 250'89

	BW	WW	YW	MILK	T.MAT.	CALV EASE	MAT CALV EASE
EPD	+3.1	+49	+81	+17	+42	+2.5	+3.0

Good solid calf that should mature into a big bull. Dam is my biggest cow with excellent feet and udder. She has some sons at Tenzer Management and PFRA. Twin to 772C. Jan 19<sup>th</sup> wt 1160lbs

# 61

## HE 71Z RUSH LAKE 772C

HE 772C 1885497 FEBRUARY 4, 2015 BW: 84  
**TWIN** WEANED: SEPTEMBER 20, 2015 WW: 728

SOO LINE MOTIVE 9016  
**WIWA CREEK RUSH LAKE 71'12**  
WIWA CREEK PRIDE 63'10

HF KODIAK 5R  
TLA BEAUTY 5R  
WIWA CREEK FULLBACK 19'07  
WIWA CREEK PRIDE 94'06

HF FREEDOM 99L  
**HEATHERBROOK MISS MORRISON 24P**  
HF MISS MORRISON 3E

O G L BATTLE CRY 427  
HF BLACKBIRD 27C  
MVHF DREAMWALKER 29A  
ALBERN MISS MORRISON 250'89

	BW	WW	YW	MILK	T.MAT.	CALV EASE	MAT CALV EASE
EPD	+3.1	+49	+81	+17	+42	+2.5	+3.0

Looks just like his brother 77C. Should get out and cover some ground. Jan 19<sup>th</sup> wt 1150lbs.

# 62

## HE 71Z RUSH LAKE 116C

HE 116C 1885500 FEBRUARY 11, 2015 BW: 78  
WEANED: SEPTEMBER 20, 2015 WW: 754

SOO LINE MOTIVE 9016  
**WIWA CREEK RUSH LAKE 71'12**  
WIWA CREEK PRIDE 63'10

HF KODIAK 5R  
TLA BEAUTY 5R  
WIWA CREEK FULLBACK 19'07  
WIWA CREEK PRIDE 94'06

GH WW SEQUEL 35S  
**GH ADAMS SEQUEL ROSE 13X**  
MC MATTY ROSE 140N

JUSTAMERE WORLDWIDE 690P  
HF ERICA 29M  
TRAILVIEW TESTIMONY 9049  
MC MATILDA ROSE 16K

	BW	WW	YW	MILK	T.MAT.	CALV EASE	MAT CALV EASE
EPD	+2.4	+47	+75	+18	+42	+5.5	+6.5

This RUSH LAKE son should work on heifers. He is out of one of my most consistent cows at throwing lower birth weights. Ross Stafford has used a brother very successfully the last couple years on his heifers. However he still has enough performance that you could throw him out with the cows as well. Jan 19<sup>th</sup> wt 1015lbs

# 63

## HE 71Z RUSH LAKE 124C

HE 124C applied for FEBRUARY 22, 2015 BW: 84  
WEANED: SEPTEMBER 20, 2015 WW: 665

SOO LINE MOTIVE 9016  
**WIWA CREEK RUSH LAKE 71'12**  
WIWA CREEK PRIDE 63'10

HF KODIAK 5R  
TLA BEAUTY 5R  
WIWA CREEK FULLBACK 19'07  
WIWA CREEK PRIDE 94'06

GH FRONTIER EARL ET 500N  
**GH ADAMS 500N MATILDA 194T**  
GH KRUGAR MATILDA 91R

B/R NEW FRONTIER 09S  
GH MONARCH ROSE 18K  
WILLDON LUSTY KRUGERRAND 26L  
WILLDON MATILDA 9E

	BW	WW	YW	MILK	T.MAT.	CALV EASE	MAT CALV EASE
EPD	+2.6	+49	+85	+17	+42	+3.0	+4.0

Flush brother to 119C and maternal brother to 106C. These RUSH LAKE calves have been features in the bull sales they have been in. Jan 19<sup>th</sup> wt 950lbs.

64

# HE 71Z RUSH LAKE 119C

HE 119C 1885501 FEBRUARY 22, 2015 BW: 83  
WEANED: SEPTEMBER 20, 2015 WW: 696

SOO LINE MOTIVE 9016  
**WIWA CREEK RUSH LAKE 71'12**  
WIWA CREEK PRIDE 63'10

HF KODIAK 5R  
TLA BEAUTY 5R  
WIWA CREEK FULLBACK 19'07  
WIWA CREEK PRIDE 94'06

GH FRONTIER EARL ET 500N  
**GH ADAMS 500N MATILDA 194T**  
GH KRUGAR MATILDA 91R

B/R NEW FRONTIER 095  
GH MONARCH ROSE 18K  
WILLDON LUSTY KRUGERRAND 26L  
WILLDON MATILDA 9E

	BW	WW	YW	MILK	T.MAT.	CALV EASE	MAT CALV EASE
EPD	+2.6	+49	+85	+17	+42	+3.0	+4.0

An embryo calf out of one of my most consistent donor dams. Lots of hair with a clean front end. Brother to 124C as well as one of my features 106C. Jan 19<sup>th</sup> wt 965lbs.



Dam of 106C, 119C, & 124C



# PREFERENCE SIRE SAV HARVESTOR 0338

IMP 0388X 1633982 APRIL 18, 2010



CAR DUKE 104  
**S A V HERITAGE 6295**  
S A V BLACKCAP MAY 4136

CAR TRACKER 904  
C A R MISS RAINDANCER 421  
S A V 8180 TRAVELER 004  
S A V MAY 2397

S A V NET WORTH 4200  
**S A V EMBLYNETTE 7749**  
SAV EMBLYNETTE DIAMOND

S A V 8180 TRAVELER 004  
S A V MAY 2410  
PRO TREND 9042 L W  
S A V SKY DIAMOND 2582

	BW	WW	YW	MILK	T.MAT.	CALV EASE	MAT CALV EASE
EPD	<b>+6.5</b>	<b>+73</b>	<b>+134</b>	<b>+23</b>	<b>+60</b>	<b>-13.0</b>	<b>-6.0</b>

Probably the biggest growth bull in the angus breed. Selling for \$275,000.00, he adds excellent length, muscling, and hair into everything that he is bred to. His daughters are outstanding, excellent uddered and sound. The first sons sold averaged \$50,000.00. Top 1% of the whole breed for weaning and yearling weight. His calves are a must see.

## 65 HE 0338 HARVESTOR 127C

HE 127C 1883132 FEBRUARY 03, 2015 BW: 104  
WEANED: SEPTEMBER 20, 2015 WW: 873

S A V HERITAGE 6295  
**S A V HARVESTOR 0338**  
S A V EMBLYNETTE 7749

CAR DUKE 104  
S A V BLACKCAP MAY 4136  
S A V NET WORTH 4200  
SAV EMBLYNETTE DIAMOND 6377

TC GRID TOPPER 355  
**STRYKER JANE 341X**  
STRYKER JANE 99R

G A R GRID MAKER  
TC PRIDE 8067  
CONNEALY LEAD ON  
BB'S NEW TREND JANE 9B

	BW	WW	YW	MILK	T.MAT.	CALV EASE	MAT CALV EASE
EPD	<b>+5.5</b>	<b>+62</b>	<b>+114</b>	<b>+21</b>	<b>+52</b>	<b>-11.0</b>	<b>-2.0</b>



Here is definitely a sale feature. The biggest performance bull in my consignment. Hair, length, and thickness this guy has it all. He is in the top 2% in the breed for weaning weight and top 1% in the yearling weight. This guy will definitely add pounds to your calf crop. As an added bonus the Harvestor females are outstanding, we calved our first ones this year and want to add a lot more to our herd. His dam is also a top notch cow that will probably enter our donor pen this year. Jan 19<sup>th</sup> wt 1300lbs.

## 66 HE 0338 HARVEST 106C

HE 106C 1873281 FEBRUARY 05, 2015 BW: 87  
**TWIN** WEANED: SEPTEMBER 20, 2015 WW: 821

S A V HERITAGE 6295  
**S A V HARVESTOR 0338**  
S A V EMBLYNETTE 7749

CAR DUKE 104  
S A V BLACKCAP MAY 4136  
S A V NET WORTH 4200  
SAV EMBLYNETTE DIAMOND 6377

GH FRONTIER EARL ET 500N  
**GH ADAMS 500N MATILDA 194T**  
GH KRUGER MATILDA 91R

B/R NEW FRONTIER 095  
GH MONARCH ROSE 18K  
WILLDON LUSTY KRUGERRAND 26L  
WILLDON MATILDA 9E (THISTLE)

	BW	WW	YW	MILK	T.MAT.	CALV EASE	MAT CALV EASE
EPD	<b>+4.9</b>	<b>+53</b>	<b>+103</b>	<b>+19</b>	<b>+45</b>	<b>-7.5</b>	<b>-1.5</b>



Another feature here. This bull has it all. Length, muscle, depth, hair, a solid foot and tremendous disposition. Out of our solid donor cow that has done really well for us. She has produced a Reserve Champion at the Calgary Bull Sale with her first calf and many more good ones since. She has 18 calves registered out of her so far and we are expecting 20 more this year. Sons working at Stubers, Masers, VanMarrions, Many Island Grazing, GW Murray Ranching as well as at home on our commercial cows. Jan 19<sup>th</sup> wt 1280 lbs

# Q REFERENCE SIRE

## S A V 004 DENSITY 4336

IMP 4336P 1266311 MARCH 25, 2004

SITZ TRAVELER 8180  
**S A V 8180 TRAVELER 004**  
 BOYD FOREVER LADY 8003

G D A R TRAVELER 71  
 SITZ EVERELDA ENTENSE 1137  
 A A R NEW TREND  
 S V F FOREVER LADY 57D

LEACHMAN RIGHT TIME  
**S A V MAY 7238**  
 S A R PROSPECTOR MAY 9124

N BAR EMULATION EXT  
 LEACHMAN ERICA 0025  
 R&J PROSPECTOR 341  
 S A R CLASSIC MAY 7278

	BW	WW	YW	MILK	T.MAT.	CALV EASE	MAT CALV EASE
EPD	<b>+3.7</b>	<b>+51</b>	<b>+92</b>	<b>+19</b>	<b>+45</b>	<b>+4.0</b>	<b>+2.0</b>



You will have a hard time finding a sire that produces nicer females than this bull. They have a reputation of being the best in the breed. Commercial ranches around the globe have used Density to correct udders, feet depth, and real world qualities in their herds. It is saying something when a bull is maybe more popular now than when he was first used over ten years ago.



Penguin Henry-Maternal Brother to 103C & 107C.  
 Herd sire for Cheerbrook Angus in the UK.

# 68 HE 4336 QUALIFIED 103C

HE 103C 198254 JANUARY 25, 2015 BW: 75  
 WEANED: SEPTEMBER 20, 2015 WW: 780

S A V 8180 TRAVELER 004  
**S A V 004 DENSITY 4336**  
 S A V MAY 7238

SITZ TRAVELER 8180  
 BOYD FOREVER LADY 8003  
 LEACHMAN RIGHT TIME  
 S A R PROSPECTOR MAY 9124

SCA IMAGE MAKER 08N  
**DBRL IM HEDY 56U**  
 WILLABAR HEDY 202J

H A IMAGE MAKER 0419  
 SCA BEAUTY 77'00  
 PAPA EQUATOR 2928  
 WILLABAR HEDY 59D

	BW	WW	YW	MILK	T.MAT.	CALV EASE	MAT CALV EASE
EPD	<b>+3.1</b>	<b>+52</b>	<b>+89</b>	<b>+25</b>	<b>+51</b>	<b>+3.5</b>	<b>+4.5</b>



Lot 68

Here is an embryo calf out of my good Robert Ballantyne donor cow. Although Density is not necessarily a heifer bull this guy should be able to be used on heifers. His flush mates were all lower birth weight as well. We are keeping two flush brothers for our own herd, one for our purebred heifers and cows and one for our commercial cows. He is also a brother to our 107C bull in this sale. Jan 19<sup>th</sup> wt 1120lbs.

# 67 HE 4336 DENSITY 59C

HE 59C 1873277 JANUARY 01, 2015 BW: 89  
 WEANED: SEPTEMBER 20, 2015 WW: 890

S A V 8180 TRAVELER 004  
**S A V 004 DENSITY 4336**  
 S A V MAY 7238

SITZ TRAVELER 8180  
 BOYD FOREVER LADY 8003  
 LEACHMAN RIGHT TIME  
 S A R PROSPECTOR MAY 9124

REMITALL PLAYBOY 4P  
**REMITALL BLACK NANCY 712T**  
 KBJ BLACK NANCE 558N

LLB NIGHT TRAIN 106M  
 BELVIN LADY BLOSSOM 28'02  
 EARLY SUNSET DAKOTA 50K  
 KBJ BLACK NANCE 336H

	BW	WW	YW	MILK	T.MAT.	CALV EASE	MAT CALV EASE
EPD	<b>+2.6</b>	<b>+44</b>	<b>+80</b>	<b>+21</b>	<b>+43</b>	<b>+2.0</b>	<b>+3.0</b>

A good deep ribbed bull out of another rock solid functional cow. The sire of 59C as well as 60C's dams is out of the tremendous two time Reserve Champion Lady Blossom cow. They are cows you want a whole herd of. Add Density to the mix and you have a winner. Jan 19<sup>th</sup> wt 1170lbs.

# R REFERENCE SIRE VISION UNANIMOUS 1418

IMP 1418Y 1701532 JANUARY 22, 2011

GAMBLES ROYAL FLUSH  
VISIONTOPLINE ROYAL STOCKMAN  
LAGRAND PRIDE 7140

B C MARATHON 7022  
CHAMPION HILL LADY 703  
CONNEALY LEAD ON  
T C PRIDE 8002

BOYD ON TARGET 1083  
VISION EDELLA 665  
VISION EDELLA 337

S A F 598 BANDO 5175  
BOYD FOREVER LADY 7095  
SYDGEN ON THE MARK  
VISION EDELLA 1045

	BW	WW	YW	MILK	T.MAT.	CALV EASE	MAT CALV EASE
EPD	+2.8	+78	+134	+17		0.0	+1.0



This bull is an absolute tank. His sons are good soggy bulls with tremendous foot under them. The daughters look like they will make tremendous cows as well. An outcross pedigree to most angus bloodlines is an added bonus. Check out his tremendous son, he is all beef.

## 69

# HE 1418 UNIFIED 107C

HE 107C 1873291 FEBRUARY 26, 2015 BW: 84  
WEANED: SEPTEMBER 20, 2015 WW: 740

VISIONTOPLINE ROYAL STOCKMAN  
VISION UNANIMOUS 1418  
VISION EDELLA 665

GAMBLES ROYAL FLUSH  
LAGRAND PRIDE 7140  
BOYD ON TARGET 1083  
VISION EDELLA 337

SCA IMAGE MAKER 08N  
DBRL IM HEADY 56U  
WILLABAR HEDY 202J

H A IMAGE MAKER 0419  
SCA BEAUTY 77'00  
PAPA EQUATOR 2928  
WILLABUR HEDY 59D



	BW	WW	YW	MILK	T.MAT.	CALV EASE	MAT CALV EASE
EPD	+2.0	+64	+108	+23	+55	+3.0	+5.0

This bull is what the beef business is all about. Deep ribbed and loaded with meat. I would like a herd full of his daughters. Again out of my Ballantyne donor cow that has really produced for us. Had planned on using his full brother last year but unfortunately lost him. These Unanimous bulls have been extremely popular, and for a good reason, consistently averaging over \$ 10,000. He has a maternal brother working over in the UK that looks amazing. His pedigree is an outcross to most other pedigrees out there. He is a definite sale feature. Note his age. Jan 19<sup>th</sup> wt 1165lbs.







# S REFERENCE SIRE SOUTHLAND THRILLER 83X



CADS 83X 1577848 FEBRUARY 02, 2010

TC FREEDOM 104  
**SOUTHLAND TWO FITTY 250T**  
SOUTHLAND LADY 201M

CONNELLY FOREFRONT  
T C RUBY 9095  
PEAK DOT PANAMA 58G  
CEDAR CREEK LADY 41G

VAR DATELINE 2674  
**SOUTHLAND BELLE 89R**  
GER-RIS BELLE 26J

VERMILION DATELINE 7078  
VAR MORIAH 6606  
SUNMOUND ESTON 25E  
RONAN R BELLE 3F

	BW	WW	YW	MILK	T.MAT.	CALV EASE	MAT CALV EASE
EPD	+5.6	+50	+77	+16	+41	0.0	+6.0

Two time Agribition Grand Champion bull. He throws good sound thick bulls that get the job done.



# 70 HE 83X THRILLER 36C

HE 36C 1885687 MARCH 03, 2015 BW: 79  
WEANED: SEPTEMBER 20, 2015 WW: 795

SOUTHLAND TWO FITTY 250T  
**SOUTHLAND THRILLER 83X**  
SOUTHLAND BELLE 89R

TC FREEDOM 104  
SOUTHLAND LADY 201M  
VAR DATELINE 2674  
GER-RIS BELLE 26J

K C F BENNETT TOTAL  
**REMINGTON LUCY 817W**  
THOMAS LUCY 1826

SITZ ALLIANCE 6595  
EXT OF CONANGA 6790  
EMULATION N BAR 5522  
THOMAS LUCY 2104

	BW	WW	YW	MILK	T.MAT.	CALV EASE	MAT CALV EASE
EPD	+2.2	+44	+73	+17	+39	+6.0	+11.5

Here is a good heifer bull out of the two time Agribition Champion Thriller. He is a flush brother to 52C as well as 120C. Note the age on these three flush brothers. Jan 19<sup>th</sup> wt 1065lbs

# 71 HE 83X THRILLER 52C

HE 52C 1885688 MARCH 04, 2015 BW: 83  
WEANED: SEPTEMBER 20, 2015 WW: 760

SOUTHLAND TWO FITTY 250T  
**SOUTHLAND THRILLER 83X**  
SOUTHLAND BELLE 89R

TC FREEDOM 104  
SOUTHLAND LADY 201M  
VAR DATELINE 2674  
GER-RIS BELLE 26J

K C F BENNETT TOTAL  
**REMINGTON LUCY 817W**  
THOMAS LUCY 1826

SITZ ALLIANCE 6595  
EXT OF CONANGA 6790  
EMULATION N BAR 5522  
THOMAS LUCY 2104

	BW	WW	YW	MILK	T.MAT.	CALV EASE	MAT CALV EASE
EPD	+2.2	+44	+73	+17	+39	+6.0	+11.5

Another heifer bull out of the same flush as 36C and 120C. Flush brothers also used at Bar EJ Ranch and Earview Colony. Jan 19<sup>th</sup> wt 1015lbs.

# 72 HE 83X THRILLER 120C

HE 120C 1885686 MARCH 06, 2015 BW: 81  
WEANED: SEPTEMBER 20, 2015 WW: 707

SOUTHLAND TWO FITTY 250T  
**SOUTHLAND THRILLER 83X**  
SOUTHLAND BELLE 89R

TC FREEDOM 104  
SOUTHLAND LADY 201M  
VAR DATELINE 2674  
GER-RIS BELLE 26J

K C F BENNETT TOTAL  
**REMINGTON LUCY 817W**  
THOMAS LUCY 1826

SITZ ALLIANCE 6595  
EXT OF CONANGA 6790  
EMULATION N BAR 5522  
THOMAS LUCY 2104

	BW	WW	YW	MILK	T.MAT.	CALV EASE	MAT CALV EASE
EPD	+2.2	+44	+73	+17	+39	+6.0	+11.5

The third of three flush brothers that should work on heifers. The dam is a low birth weight cow with other sons used on heifers at BJ Cattle Co and Michalskys and Greg James. Jan 19<sup>th</sup> wt 935lbs.

# T REFERENCE SIRE

## R A F WIDE WORLD 920

IMP 920W 1658985 MARCH 16, 2009

R A F PRIME RIB 025  
**R A F WIDELOAD 500**  
 R A F ESTERMERE K 964

PAA COLUMBUS 8535  
 R A F ESTERMERE 304  
 KRUGERRAND OF DONAMERE 490  
 R A F ESTERMERE W L 04

R A F CALCULATOR 205  
**R A F ESTERMERE 532**  
 R A F ESTERMERE 701

HUNTS CALCULATOR 2720  
 R A F ELDORENE 014  
 R A F VANGUARD 408  
 R A F MISS TEXAS 442



T

	BW	WW	YW	MILK	T.MAT.	CALV EASE	MAT CALV EASE
EPD	+2.1	+48	+90	+26	+50	+2.0	+3.0

This guy throws excellent muscle and hair in an attractive package. Some of the top young cows in peoples herds are being reported by people that have used him.

# 73 HE WIDE WORLD 130C

HE 130C 1885689 FEBRUARY 28, 2015 BW: 79  
 WEANED: SEPTEMBER 20, 2015 WW: 754

R A F WIDELOAD 500  
**R A F WIDE WORLD 920**  
 R A F ESTERMERE 532

R A F PRIME RIB 025  
 R A F ESTERMERE K 964  
 R A F CALCULATOR 205  
 R A F ESTERMERE 701

SITZ TRADITION RLS 8702  
**REMITALL BLOSSOM 589S**  
 BELVIN LADY BLOSSOM 28'02

VERMILION DATELINE 7078  
 R L S EISA EVERGREEN 5018  
 O G L BATTLE CRY 427 128  
 BELVIN LADY BLOSSOM 47'97



Lot 73

	BW	WW	YW	MILK	T.MAT.	CALV EASE	MAT CALV EASE
EPD	+2.9	+44	+82	+21	+42	+1.0	+5.0

Good solid heifer bull here. Great hair and depth of body going back to the tremendous Lady Blossom cow family. Will be a great bull to use on the heifers or throw with the cows your choice either way. He should fit the bill. Flush brother to 30C. Note age on these two flush bulls as well. Jan 19<sup>th</sup> wt 1100lbs.

# 74 HE WIDE WORLD 30C

HE 30C 1885690 MARCH 01, 2015 BW: 80  
 WEANED: SEPTEMBER 20, 2015 WW: 686

R A F WIDELOAD 500  
**R A F WIDE WORLD 920**  
 R A F ESTERMERE 532

R A F PRIME RIB 025  
 R A F ESTERMERE K 964  
 R A F CALCULATOR 205  
 R A F ESTERMERE 701

SITZ TRADITION RLS 8702  
**REMITALL BLOSSOM 589S**  
 BELVIN LADY BLOSSOM 28'02

VERMILION DATELINE 7078  
 R L S EISA EVERGREEN 5018  
 O G L BATTLE CRY 427 128  
 BELVIN LADY BLOSSOM 47'97

	BW	WW	YW	MILK	T.MAT.	CALV EASE	MAT CALV EASE
EPD	+2.9	+44	+82	+21	+42	+1.0	+5.0

Another good heifer bull out of the solid producing Wide World bull. Flush brother to 130C. Jan 19<sup>th</sup> wt 1010lbs.

# U REFERENCE SIRE

## HF TIGER 5T

HFDF 5T 1402252 JANUARY 01, 2007

SANDY BAR ADVANTAGE 43M  
**HF KODIAK 5R**  
 WILBAR RUBY 955N

TC ADVANTAGE  
 SANDY BAR JEMINA 44K  
 VERMILION YELLOWSTONE  
 WILBAR RUBY161J

TC FREEDOM 104  
**HF ECHO 84R**  
 HFDF ECHO 6N

CONNEALY FOREFRONT  
 T C RUBY 9095  
 RIVERBEND POWERLINE 0050  
 HF ECHO 83J

	BW	WW	YW	MILK	T.MAT.	CALV EASE	MAT CALV EASE
EPD	+0.2	+60	+119	+31	+61	+12.0	+7.0

Tiger has quickly become a Canadian legend. His calves are known for lower birth weights with excellent growth and outstanding feet and hair. It is hard to find a herd in the nation without progeny from this great champion.



**75**

**HE 5T TIGER 9C**



HE 9C CM380483 JANUARY 06, 2015 BW: 85  
WEANED: SEPTEMBER 20, 2015 WW: 702

HF KODIAK 5R SANDY BAR ADVANTAGE 43M  
**HF TIGER 5T** WILBAR RUBY 955N  
 HF ECHO 84R TC FREEDOM 104  
 HFDF ECHO 6N

BJ'S XTRA PERFORMANCE 019 BJ'S NO LIMITS 15S  
**HE 19X SWEETIE PIE 109A** PRAIRIELANE 297E ROSEBUD 3050  
 BLACK WOLF ERICA LADY 447P LCI MOTOWN 2M  
 GH ERICA MISS 11M

	BW	WW	YW	MILK	T.MAT.	CALV EASE	MAT CALV EASE
EPD	+2.3	+53	+72	+24	+51	+4.5	4.5

Decent muscle expression on this good son of Tiger. Two year old heifer's first calf. Jan 19<sup>th</sup> wt 1020lbs.

**76**

**HE 16A TIGER 29C**

HE 29C 1873282 FEBRUARY 05, 2015 BW: 86  
WEANED: SEPTEMBER 20, 2015 WW: 800

BIDWELL TIGER 9Y HF TIGER 5T  
**BLACK HILLS TIGER 16A** MVF ELLEN 612T  
 BLACK HILLS COREEN 53W BIDWELL WINDY 3T  
 BLACK HILLS COREEN 24T

S A V PIONEER 7301 S A V FINAL ANSWER 0035  
**TIMBER WOLFE PIONEER 10Z** S A V BLACKBIRD 5297  
 TIMBER WOLF FAY 13T TIMBER WOLFE 2566 BARIS 214R  
 TIMBER WOLF 973M FAY 283R

	BW	WW	YW	MILK	T.MAT.	CALV EASE	MAT CALV EASE
EPD	+2.1	+51	+90	+25	+51	+2.0	+5.0

This guy has good length and depth of body like his good Pioneer dam. Tiger breeding on the top side of his pedigree. Jan 19<sup>th</sup> wt 1185lbs.

**78**

**HE 311Z FIRST RATE 18C**

HE 18C 1873290 FEBRUARY 24, 2015 BW: 90  
WEANED: SEPTEMBER 20, 2015 WW: 760

EXAR FIRST RATE 0276B EXG RS FIRST RATE S903  
**JUSTAMERE FIRST RATE 311Z** EXG QUEEN S325 R3  
 JUSTAMERE 131T EMPRESS 138X JUSTAMERE 2500 MINDBENDER 131T  
 EXAR EMPRESS 2429

ANKONIAN WERNER WILD FIRE 96 S A V 8180 TRAVELER 004  
**HILLS OF HOME PEARL 72W** FSR ELBA SPECIAL DESIGN S406  
 HILLS OF HOME PEARL 50T S A V NET WORTH 4200  
 HILLS OF HOME PEARL 2N

	BW	WW	YW	MILK	T.MAT.	CALV EASE	MAT CALV EASE
EPD	+2.9	+47	+83	+19	+43	+2.0	+7.0

A good deep sound bull with tremendous hair coat. A lot of good to this guy and out of a really nice moderate cow with a lot of good qualities as well. Note this guys age as well. Jan 19<sup>th</sup> wt 1125lbs.

**77**

**HE 73N PARADOX 105C**

HE 105C 1873280 FEBRUARY 04, 2015 BW: 98  
WEANED: SEPTEMBER 20, 2015 WW: 738

PAPA EQUATOR 2928 PAPA POWER 096  
**COLDSTREAM PARADOX 73N** PAPA ENVIOUS BLACKBIRD 8849  
 COLDSTREAM BLACKBRID 53G ANGUS ACRES TEX 16S  
 COLDSTREAM BLACKBIRD 62E

HF TIGER 5T HF KODIAK 5R  
**FCR JENNIFER 22X** HF ECHO 84R  
 FCR JENNIFER 45L CRESCENT CREEK CHIEF 22G  
 BATSCOL KEEPSAKE 37C

	BW	WW	YW	MILK	T.MAT.	CALV EASE	MAT CALV EASE
EPD	+4.9	+49	+87	+13	+38	-5.0	0.0

This guy's Tiger dam was our choice in the Power and Perfection sale at Agribition. She is out of a tremendous cow family and has produced well for us with a son going to Stubers and a top daughter retained in our herd. The Paradox bull produced extremely well for Coldstreams. Jan 19<sup>th</sup> wt 1120lbs.



COLIN FORBES  
P.O. BOX 45  
PIAPOT, SK S0N 1N0



24th

**TOP**

**Black Angus Bull Sale**

