



*5<sup>th</sup> Annual*  
PRODUCTION SALE

THURSDAY, MARCH 31, 2016 - 1:00 PM  
COWTOWN LIVESTOCK EXCHANGE INC.  
MAPLE CREEK, SK

W  
E  
L  
C  
O  
M  
E



## Sheidaghan Anghus

TOM & VICKI FLANAGAN  
PO Box 627 SON 1N0  
MAPLE CREEK, SK  
P: 306.662.2272  
C: 306.662.8120  
TOMVIC@SASKTEL.NET  
SHEIDAGHANANGHUS.COM

## WELCOME TO THE 5TH ANNUAL SHEIDAGHAN ANGHUS SALE.

It's been quite a year since last year's sale. The weather didn't exactly cooperate and we worried all summer about grass and prayed for rain that never came in the hoped for amounts. In spite of this the grass we did have was hard and nutritious. The cows milked well so the calves thrived and we're real happy with the calves in our 2016 Sale. We think the most consistent and heaviest we've produced so far.

Our mission is to produce cattle that will add real quality and value to the commercial cattleman's calf crop. The bulls are big, thick and powerful, with good hair and testicles all on good feet. They are full of performance yet have calving ease and maternal traits. The heifers are right off the top of our heifer pen and we're confident they'll make great cows.

We are excited about our sale this year, and look forward to welcoming you there. If you can't make it we encourage you to watch/bid at [dvauction.com](http://dvauction.com) or take advantage of our sight unseen program explained in the catalogue. In the meantime feel free to stop out at the ranch and have an in person look at the animals. We'd love to show you around.

Finally thank you to last year's buyers and bidders and our supporters over the years. We've met great people and made some wonderful friends over the years. We appreciate the support you've given our program.

Tom and Vicki Flanagan



## Ricky Houff

SALE CONSULTANT

Rocky's experience and expertise has, again been invaluable. The results of his assistance can be seen in the quality and consistency of our yearling bulls and heifers this year. I appreciate very much the time Rocky has spent on the road with me searching out and evaluating new herd sires and introducing me to many new contacts in the industry. He is an enthusiastic and accomplished cattleman and a great friend.

# 5Th Annual Production Sale

THURSDAY, MARCH 31, 2016 - 1:00 PM  
COWTOWN LIVESTOCK EXCHANGE. INC.  
MAPLE CREEK, SK

## OFFERING

60  
YEARLING REGISTERED  
BLACK ANGUS BULLS

10 OF 20  
YEARLING REGISTERED  
BLACK ANGUS HEIFERS



### SALE DAY CONTACTS

Tom 306.662.8120  
Bushy 306.661.7791  
Monty 306.662.7902

### SALE CONSULTANT

Rocky Houff, Cowtown Livestock 403.548.9829

### SPECIAL REPRESENTATIVE

Thank you for attending - Laird Senft,  
Canadian Angus Association

### COWTOWN LIVESTOCK EXCHANGE

306.662.2648  
TOLL FREE 1.800.239.5933

### AUCTIONEER

Chris Poley 306.220.5006

### SALE STAFF

#### **T Bar C Cattle Co. Ltd**

Ted Serhienko 306.221.2711  
Shane Michelson 403.363.9973  
Nate Marin, Ringside 306.869.7130

### INSURANCE

Blythman Agencies 306.662.2604

### SCHEDULE

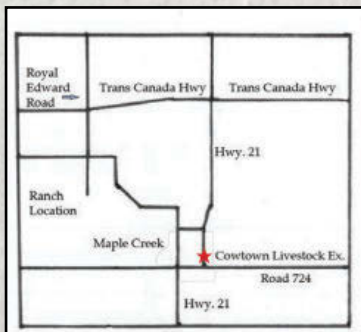
Bulls will be available for viewing Thursday morning.  
Complimentary Lunch - 11:00 AM  
Sale Time - 1:00 PM

***DVAuction***  
**Broadcasting Real-Time Auctions**

Never Miss An Auction Again!  
Watch & Bid online for FREE!

**Visit [www.DVAuction.com](http://www.DVAuction.com)  
and Register Today!**

For General Questions Please Contact Our Office:  
(402) 316-5460 or [support@dvauction.com](mailto:support@dvauction.com)



VIEW THE CATALOGUE ONLINE  
[WWW.SHEIDAGHANANGHUS.COM](http://WWW.SHEIDAGHANANGHUS.COM)  
[WWW.BUYAGRO.COM](http://WWW.BUYAGRO.COM)

# From the Desk at T Bar...



**W**elcome to the 5th Annual Sheidaghan Angus Production Sale. We are excited to assist Tom and Vicki with their marketing.....great program and truly wonderful people.

Their ranch is nestled near Maple Creek, the heart of cow/calf country in Saskatchewan. In the past decade, this area has seen its extremes.... from having enough rain to causing a washout on the TransCanada highway; to months of heat without seeing a cloud in the sky. But nature's challenges develop better cattle and breeders that produce them. Thus.... the Sheidaghan herd has been built and developed using tolerance to these extremes as a selection tool. Soundness of foot and limb, size and soundness of udder and fertility are standards for Tom, while never forgetting about what a beef breed is all about...performance.

The 2016 lineup of bulls is powerful...thick, rugged, hairy with lots of testicle.... sound and ready to cover big pastures in short grass country to get your cows bred. The genetics range from proven to new fresh genes ideal for all types of programs... commercial and purebred. This diversity allows ranchers to select power bulls for cows while others can source "sleep easy" calving ease sires... ideal for all types of programs and all types of budgets.

The female side of the sale offers a world of opportunity! Just as diverse in genetics and phenotype as the bulls, these heifers stem from top cow families that have been developed over the years, based on soundness, udder quality and predictability. Breeders... there are new cow family opportunities for any program...check them out!

As the ranchers of North America restock the beef herds, Angus influence is critical.....because the Angus female is "queen of the range!" During the next decade, Angus influenced breeding females will demand a premium for quality and quantity... make sure that you are on the right side!

Plan to be with us for one of the exciting production sales this spring....great offering... great program!

If we at T bar C, may be of any assistance, prior to or sale day, do not hesitate to give Shane, Ted or myself a call.

Chris Poley

Sale Management...



4 3342 Millar Avenue, Saskatoon  
Saskatchewan S7K 7G9

Ph: 306-933-4200 Fax: 306-934-0744

info@tbarc.com www.buyagro.com

Chris Poley: 306-220-5006 Ted Serhienko: 306-221-2711

Shane Michelson: 403-363-9973

FROM  
THE  
DESK  
AT  
T  
BAR

# General Sale Information

This is NOT a video sale as in past years.

## SALE ORDER

- The lead off bulls and sale order will be announced prior to the sale. The catalogue order is not the sale order (new this year). The bulls will enter the ring in pairs but will be sold in sale order.
- The yearling heifers we are offering will be sold after the bulls on a 'choice' basis. They will be offered in pairs with the successful buyer taking his choice. We will keep the other one. All heifers have been palpated and determined to be reproductively sound.
- No bulls will be sold prior to the sale.
- Semen testing - all bulls in the sale will be semen tested and have passed a breeding soundness evaluation prior to Sale Day and are FULLY GUARANTEED.
- Sale order, scrotal circumferences & current weights will be available Sale Day.
- Lunch will be provided – served before the sale at the Cowtown Livestock facility. Refreshments will be served after the sale.

**CALVING EASE** – we have rated each bull (in our opinion based on all available information).

- \*\*\*Heifer bull – should produce minimal problems when bred to moderate size first calf heifers.
- \*\*Large heifer/cow bull – recommended for second calvers or smaller framed cows 1100 – 1300 lbs.
- \*Cow bull – recommended for mature cows 1400+ lbs.

**RIGHT TO SEMEN** – Sheidaghan Angus reserves the right to draw semen from any bull sold in this sale for in-herd use only (at our expense and buyers convenience).

**HERD HEALTH** – bulls and heifers have been given vaccinations as spring and fall calves to prevent viral and bacterial pneumonia, clostridial diseases and 'sleepers' (Pyramid 5/Presponse + Vision 8/Som). As yearlings, bulls and heifers are vaccinated to prevent 'foot rot' and are given a pre-breeding vaccine to prevent reproductive failure (Express 5VL5).

**WEANING WEIGHT DATE:** October 2, 2015

**YEARLING WEIGHT DATE:** February 17, 2016

## EPD BREED AVERAGES – SPRING 2015

	EPDS	BW	WW	YW	MILK	TM
Black Angus		2.1	45	81	19	42

Please bring this catalogue  
with you to the sale!



**REF RR Scotchman 2999**

1174224 IMP 2999M MAR. 30, 2002

R R SCOTCHCAP 9440 AMF NHF  
**E X A R SCOTCH CAP 816** AMF NHF CAF DDF OHF  
 LEACHMAN BLACKCAP 2202

SCOTCH CAP AMF NHF CAF DDF OHF  
 BLACKCAP OF R R 5367  
 N BAR EMULATION EXT AMF NHF CAF DDF OHF  
 LEACHMAN BLACKCAP 0201

R R FERDINAND 758D AMF NHF CAF DDF OHF  
**ERICA LASSIE OF R R 8464**  
 ERICA LASSIE OF R R 4580

R R 9440 SCOTCH CAP 1483 AMF NHF CAF DDF OHF  
 BLACKCAP OF R R 5367  
 LOST LAKE HOME RUN (RC)  
 ERICA LASSIE OF R R 8268

BW: N/A 205 DW: N/A

EPDS	BW	WW	YW	MILK	TM
	1.4	51	97	21	47



**REF DBRL Alaskan 57X**

1556046 DBRL 57X FEB. 19, 2010

HF KODIAK 5R MAF AMF NHF CAF DDF OHF  
**HF ALASKAN 94T**  
 HF ECHO 112R

SANDY BAR ADVANTAGE 43M DDF  
 WILBAR RUBY 955N  
 BT RIGHT TIME 24J AMF NHF CAF DDF OHF  
 HF ECHO 187N

DMM AMBUSH 03M  
**DBRL 03M PATRICIA 21U**  
 DBRL RT PATRICIA 9R

HIGH VALLEY 4C6 AMBUSH AMF CAF  
 DMM MISS ESSENCE 108J  
 LEACHMAN RIGHT TIME AMF DMF  
 ELLIOTT PATRICIA 26M

BW: 78 LBS 205 DW: 847 LBS.

EPDS	BW	WW	YW	MILK	TM
	2.1	52	80	19	45



**REF S A V Thunderbird 9061**

1639062 IMP 961W FEB. 26, 2009

SITZ TRAVELER 8180 AMF NHF CAF DDF OHF  
**S A V FINAL ANSWER 0035** AMF NHF CAF DDF OHF  
 S A V EMULOUS 8145 CAF

G D A R TRAVELER 71 AMF NHF CAF DDF OHF  
 SITZ EVERELDA ENTENSE 1137  
 BON VIEW BANDO 598 AMF CAC DDF  
 S A V SKY EMULOUS 2124

S A V BISMARCK 5682 AMF NHF CAF DDF OHF  
**S A V EMBLYNETTE 7411** CAF  
 S A V EMBLYNETTE 4408 CAF

G A R GRID MAKER AMF NHF CAF DDF OHF  
 S A V ABIGALE 0451  
 SAV8180TRAVELER004 AMF NHF CAF DMF DMF OSF DDF OHF  
 S A V EMBLYNETTE 1182

BW: N/A 205 DW: N/A

EPDS	BW	WW	YW	MILK	TM
	-0.3	69	119	19	54

**REF SAV Final Answer 0035**

1061938 IMP 035K FEB. 22, 2000

G D A R TRAVELER 71 AMF NHF CAF DDF OHF  
**SITZ TRAVELER 8180** AMF NHF CAF DDF OHF  
 SITZ EVERELDA ENTENSE 1137

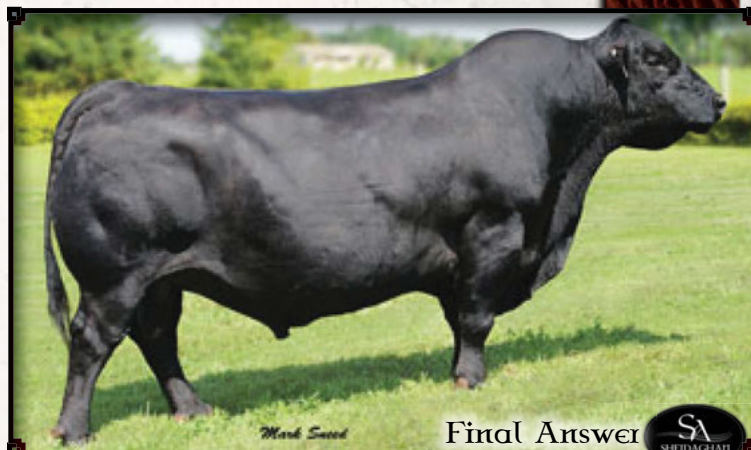
BON VIEW BANDO 598 AMF CAC DDF  
**SAV EMULOUS 8145** CAF  
 SA V SKY EMULOUS 2124

TRAVELER 1148 G D A R  
 G D A R MISS BLACKCAP 567  
 G D A R RAINMAKER 340  
 SITZ EVERELDA ENTENSE 2335

TEHAMA BANDO 155 AMF NHF CAF DDF OHF  
 BON VIEW DORA 56  
 ELLANIN SKY DIVER  
 TAIL N 0383

BW: N/A 205 DW: N/A

EPDS	BW	WW	YW	MILK	TM
	-1.3	59	101	22	52



Mark Sued

Final Answer



**REF SITZ Upward 307R**

1385926 IMP 307R MAR. 12, 2005

CONNEALY LEAD ON AMF NHF CAF DDF DMF OHF  
**CONNEALY ONWARD** AMF NHF CAF DDF DMF  
 ALTUNE OF CONANGA 6104

SITZ VALUE 7097 AMF NHF CAF DDF OHF  
**SITZ HENRIETTA PRIDE 81M**  
 SITZ HENRIETTA PRIDE 1370

CONNEALY LEADTIME AMF NHF CAF DDF OHF  
 ELIGENCE PLUS OF CONANGA  
 G A R TRAVELER 1489 CAF AMF DDF DMF OHF  
 AVALON 1418 OF CONANGA 6276

SITZ TRAVELER 6802  
 SITZ EISA EVERGREEN 791  
 O C C GREAT PLAINS 943G AMF NHF CAF DDF OHF  
 SITZ HENRIETTA PRIDE 2155

BW: N/A 205 DW: N/A

EPDS	BW	WW	YW	MILK	TM
	2.2	69	130	35	70



Mark Sued

Upward



**REF MERIT 2005**

1684366 TJL 2005Z FEB. 7, 2012

LEACHMAN RIGHT TIME AMF DMF  
**L T BANDWAGON 3105** AMF NHF CAF DDF OHF  
 L T MS VIKINGS VALUE 0256

MERIT LUKE 3120  
**MERIT COUNTESS 3X**  
 MERIT COUNTESS 8781

N BAR EMULATION EXT AMF NHF CAF DDF OHF  
 LEACHMAN ERICA 0025  
 SITZ VALUE 7097 AMF NHF CAF DDF OHF  
 MS POLO PEAK 1148 5970

LUKENS 9440 SCOTCH CAP L463  
 GLENNIE LADY ANN 23J  
 MERIT MATADOR 4190  
 MERIT COUNTESS 7067

BW: 75 LBS 205 DW: 650 LBS 365 DW: 1278 LBS

EPDS	BW	WW	YW	MILK	TM
	1.2	37	72	30	49



Merit



## 3 STAR PROGRAM

- ★★★ Heifer Bull
- ★★ LG Heifer/Cow Bull
- ★ Cow Bull



### 1 SHEIDAGHAN BAND WAGON 1C

1843910 VMF 1C JAN. 28, 2015 CE ★★★

LT BANDWAGON 3105 AMF CAF NHF DDF  
**MERIT 2005**  
 MERIT COUNTESS 3X

LEACHMAN RIGHT TIME DMF AMF  
 LT MS VIKINGS VALUE 0256  
 MERIT LUKE 3120  
 MERIT COUNTESS 8781

S A V FINAL ANSWER 0035 AMF CAF NHF DDF  
**SHEIDAGHAN LADY 6A**  
 SHEIDAGHAN LADY 62Y

SITZ TRAVELER 8180 AMF CAF NHF DDF  
 S A V EMULOUS 8145 CAF  
 BJ'S FORT WALSH 823  
 VALLEY BLOSSOM LADY 797R

BW: 73 LBS 205 DW: 754 LBS. FEB.17/16 WT: 1265 LBS.

EPDS	BW	WW	YW	MILK	TM
	-0.2	49	85	28	53

### 2 SHEIDAGHAN BOULDER 2C

1843926 VMF 2C JAN. 28, 2015 CE ★★

HOOVER DAM AMF CAF NHF DDF  
**MUSGRAVE BOULDER** DDF  
 MILL BRAE SA JAUNTY 3079

SYDGEN C C & 7 AMF CAF NHF DDF  
 ERICA OF ELLSTON C124  
 SITZ ALLIANCE 6595 DMF AMF CAF NHF DDF  
 MILL BRAE EXT JAUNTY 8068

WAF ZORZAL 321U AMF CAF NHF OSF  
**NRA COUNTESS 45A**  
 LODGE COUNTESS 35T

TRES MARIAS 6301 ZORZAL  
 TRES MARIAS 6582 CUMELLEN 5632  
 CUDLOBE RAINMAKER 49L  
 LODGE COUNTESS 8L

BW: 81 LBS 205 DW: 707 LBS. FEB.17/16 WT: 1250 LBS.

EPDS	BW	WW	YW	MILK	TM
	1.4	51	91	26	52

### 3 SHEIDAGHAN BAND WAGON 3C

1843921 VMF 3C JAN. 30, 2015 CE ★★★

LT BANDWAGON 3105 AMF CAF NHF DDF  
**MERIT 2005**  
 MERIT COUNTESS 3X

LEACHMAN RIGHT TIME DMF AMF  
 LT MS VIKINGS VALUE 0256  
 MERIT LUKE 3120  
 MERIT COUNTESS 8781

S A V FINAL ANSWER 0035 AMF CAF NHF DDF  
**SHEIDAGHAN BESSIE 29A**  
 SHEIDAGHAN BESSIE 28Y

SITZ TRAVELER 8180 AMF CAF NHF DDF  
 S A V EMULOUS 8145 CAF  
 RR SCOTCHMAN 2999  
 SHEIDAGHAN BESSIE 37W

BW: 79 LBS 205 DW: 768 LBS. FEB.17/16 WT: 1235 LBS.

EPDS	BW	WW	YW	MILK	TM
	0.7	54	94	26	53

### 4 SHEIDAGHAN ANSWER 4C

1843861 VMF 4C JAN. 31, 2015 CE ★★

SITZ TRAVELER 8180 AMF CAF NHF DDF  
**S A V FINAL ANSWER 0035** AMF CAF NHF DDF  
 S A V EMULOUS 8145 CAF

G D A R TRAVELER 71 AMF CAF NHF DDF  
 SITZ EVERELDA ENTENSE 1137  
 BON VIEW BANDO 598 AMF CAC DDF  
 S A V SKY EMULOUS 2124

SANDY BAR IDEAL 18S 2X  
**SHEIDAGHAN MIA 9Z**  
 SHEIDAGHAN MIA 074X

SANDY BAR IDEAL 18S  
 SANDY BAR MISS QUALITY 1K  
 RR SCOTCHMAN 2999  
 SANDY BAR MIA 82R

BW: 92 LBS 205 DW: 737 LBS. FEB.17/16 WT: 1315 LBS.

EPDS	BW	WW	YW	MILK	TM
	1.2	54	91	21	48



## 5 SHEIDAGHAN **ALASKAN** 8C (TWIN)

1843619 VMF 8C FEB. 4, 2015 CE ★★

HF ALASKAN 94T  
**DBRL ALASKAN 57X**  
 DBRL 03M PATRICIA 21U

HF KODIAK 5R AMF CAF NHF MAF DDF  
 HF ECHO 112R  
 DMM AMBUSH 03M  
 DBRL RT PATRICIA 9R

SOUTHLAND TWO FIFTY 250T  
**SOUTHLAND ROSEBUD 47W**  
 RONAN R ROSEBUD 5J

TC FREEDOM 104 AMF CAF NHF DDF  
 SOUTHLAND LADY 201M  
 ANGUS ACRES BART 78D  
 RONAN R ROSEBUD 32Z

BW: 62 LBS 205 DW: 625 LBS. FEB.17/16 WT: 1135 LBS.

EPDS	BW	WW	YW	MILK	TM
	1.8	44	69	15	37



5



## 6 SHEIDAGHAN **ALASKAN** 9C (TWIN)

1843620 VMF 9C FEB. 4, 2015 CE ★★

HF ALASKAN 94T  
**DBRL ALASKAN 57X**  
 DBRL 03M PATRICIA 21U

HF KODIAK 5R AMF CAF NHF MAF DDF  
 HF ECHO 112R  
 DMM AMBUSH 03M  
 DBRL RT PATRICIA 9R

SOUTHLAND TWO FIFTY 250T  
**SOUTHLAND ROSEBUD 47W**  
 RONAN R ROSEBUD 5J

TC FREEDOM 104 AMF CAF NHF DDF  
 SOUTHLAND LADY 201M  
 ANGUS ACRES BART 78D  
 RONAN R ROSEBUD 32Z

BW: 74 LBS 205 DW: 627 LBS. FEB.17/16 WT: 1150 LBS.

EPDS	BW	WW	YW	MILK	TM
	1.8	44	69	15	37



6



## 7 SHEIDAGHAN **THUNDER** 12C

1843831 VMF 12C FEB. 4, 2015 CE ★

S A V FINAL ANSWER 0035 AMF CAF NHF DDF  
**S A V THUNDERBIRD 9061** DMF AMF CAF NHF DDF  
 S A V EMBLYNETTE 7411 CAF

SITZ TRAVELER 8180 AMF CAF NHF DDF  
 S A V EMULOUS 8145 CAF  
 S A V BISMARCK 5682 AMF CAF NHF DDF  
 S A V EMBLYNETTE 4408 CAF

BJ'S FORT WALSH 823  
**SHEIDAGHAN PRIDE LADY 96Y**  
 CRESCENT CREEK PRIDE LADY 58U

TC STOCKMAN 365 DDF  
 HOFF EBONY S C 660 2131  
 CRESCENT CREEK ALLIANCE 29N  
 CRESCENT CREEK PRIDE LADY 83H

BW: 92 LBS 205 DW: 683 LBS. FEB.17/16 WT: 1250 LBS.

EPDS	BW	WW	YW	MILK	TM
	2.5	50	89	21	46



7



## 8 SHEIDAGHAN **BANDWAGON** 20C

1843911 VMF 20C FEB. 7, 2015 CE ★★★

L T BANDWAGON 3105 AMF CAF NHF DDF  
**MERIT 2005**  
 MERIT COUNTESS 3X

LEACHMAN RIGHT TIME DMF AMF  
 L T MS VIKINGS VALUE 0256  
 MERIT LUKE 3120  
 MERIT COUNTESS 8781

TC ADVANTAGE AMF CAF NHF DDC  
**SHEIDAGHAN MAGGIE 7A**  
 SHEIDAGHAN MAGGIE 26Y

KRUGERRAND OF DONAMERE 490 AMF NHF  
 TC PRIDE 2010  
 SHEIDAGHAN IDEAL 13W  
 HEATHERLEA MAGGIE 28W

BW: 78 LBS 205 DW: 704 LBS. FEB.17/16 WT: 1205 LBS.

EPDS	BW	WW	YW	MILK	TM
	-0.1	42	76	27	48

# 9 SHEIDAGHAN THUNDER 24C

1843830 VMF 24C FEB. 9, 2015 CE ★

S A V FINAL ANSWER 0035 AMF CAF NHF DDF  
**S A V THUNDERBIRD 9061** DMF AMF CAF NHF DDF  
 S A V EMBLYNETTE 7411 CAF

SITZ TRAVELER 8180 AMF CAF NHF DDF  
 S A V EMULOUS 8145 CAF  
 S A V BISMARCK 5682 AMF CAF NHF DDF  
 S A V EMBLYNETTE 4408 CAF

S A F 598 BANDO 5175 AMF CAC DDF  
**SHEIDAGHAN LADY 95Y** CAF  
 SANDY BAR LADY 63R

BON VIEW BANDO 598 AMF CAC DDF  
 S A F ROYAL LASS 1002  
 DOUBLE D BARDOLENE 15L  
 SANDY BAR LADY 15L

BW: 90 LBS 205 DW: 699 LBS. FEB.17/16 WT: 1195 LBS.

EPDS	BW	WW	YW	MILK	TM
	2.9	55	98	20	48



11



# 10 SHEIDAGHAN UPWARDS 26C

1843527 VMF 26C FEB. 10, 2015 CE ★★

CONNEALY ONWARD DMF AMF CAF NHF DDF  
**SITZ UPWARD 307R** DMF AMF CAF NHF DDF  
 SITZ HENRIETTA PRIDE 81M

WINDOVER KAHUNA 13P  
**GLENDOR FLORA 30U 1434320**  
 GLENDOR FLORA 27L

CONNEALY LEAD ON DMF AMF CAF NHF DDF  
 ALTUNE OF CONANGA 6104  
 SITZ VALUE 7097 AMF CAF NHF DDF  
 SITZ HENRIETTA PRIDE 1370

HARMON KAHUNA L047  
 WINDOVER BLACK LADY 10J  
 HOFF GREAT WESTERN S C 456 DDF  
 GLENDOR FLORA 48G

BW: 86 LBS 205 DW: 702 LBS. FEB.17/16 WT: 1225 LBS.

EPDS	BW	WW	YW	MILK	TM
	2.1	48	91	27	51

# 11 SHEIDAGHAN ANSWER 27C

1843524 VMF 27C FEB. 10, 2015 CE ★★★

SITZ TRAVELER 8180 AMF CAF NHF DDF  
**S A V FINAL ANSWER 0035** AMF CAF NHF DDF  
 S A V EMULOUS 8145 CAF

WINDOVER KENTUCKY 6M  
**SANDY BAR PRIDE 609T ELITE**  
 SANDY BAR PRIDE 89K

G D A R TRAVELER 71 AMF CAF NHF DDF  
 SITZ EVERELDA ENTENSE 1137  
 BON VIEW BANDO 598 AMF CAC DDF  
 S A V SKY EMULOUS 2124

WINDOVER KENTUCKY 22K  
 HARMON BLACK LADY K162 P  
 DAY BY DAY CHIEF 305H  
 KORNFELD PRIDE 606F

BW: 82 LBS 205 DW: 693 LBS. FEB.17/16 WT: 1225 LBS.

EPDS	BW	WW	YW	MILK	TM
	-0.3	45	73	20	43



12



# 12 SHEIDAGHAN UPWARD 30C

1843679 VMF 30C FEB. 10, 2015 CE ★

CONNEALY ONWARD DMF AMF CAF NHF DDF  
**SITZ UPWARD 307R** DMF AMF CAF NHF DDF  
 SITZ HENRIETTA PRIDE 81M

SANDY BAR ADVANTAGE 506S  
**SHEIDAGHAN PRIDE 110W**  
 SANDY BAR PRIDE 506R

CONNEALY LEAD ON DMF AMF CAF NHF DDF  
 ALTUNE OF CONANGA 6104  
 SITZ VALUE 7097 AMF CAF NHF DDF  
 SITZ HENRIETTA PRIDE 1370

VALLEY BLOSSOM ADVANTAGE 732M  
 SANDY BAR MIA 719K  
 VALLEY BLOSSOM ADVANTAGE 732M  
 WILMO PRIDE 8M

BW: 90 LBS 205 DW: 736 LBS. FEB.17/16 WT: 1270 LBS.

EPDS	BW	WW	YW	MILK	TM
	2.0	56	100	29	57

# 13 SHEIDAGHAN UPWARD 33C

1843846 VMF 33C FEB. 10, 2015 CE ★

CONNEALY ONWARD DMF AMF CAF NHF DDF  
**SITZ UPWARD 307R** DMF AMF CAF NHF DDF  
 SITZ HENRIETTA PRIDE 81M

CONNEALY LEAD ON DMF AMF CAF NHF DDF  
 ALTUNE OF CONANGA 6104  
 SITZ VALUE 7097 AMF CAF NHF DDF  
 SITZ HENRIETTA PRIDE 1370

SANDY BAR EQUATOR 150S  
**SHEIDAGHAN ELBA 191Y**  
 CRESCENT CREEK ELBA 103J

VALLEY BLOSSOM EQUATOR 729M  
 SANDY BAR DUCHESS 114E  
 DWAJO CHIEF 92E  
 CRESCENT CREEK ELBA 12Y

BW: 82 LBS 205 DW: 692 LBS. FEB.17/16 WT: 1235 LBS.

EPDS	BW	WW	YW	MILK	TM
	2.4	51	95	29	55



# 14 SHEIDAGHAN FOCUS 36C

1843800 VMF 36C FEB. 11, 2015 CE ★★★

MYTTY IN FOCUS AMF CAF NHF DDF  
**CUDLOBE IN FOCUS 55** NHF DDF  
 CUDLOBE ENCHANTRESS 55M

S A F FOCUS OF E R AMF CAF NHF DDF  
 MYTTY COUNTLESS 906  
 BON VIEW NEW DESIGN 1407 AMF CAF NHF DDF  
 CUDLOBE ENCHANTRESS 47H

SHEIDAGHAN IDEAL 13W  
**SHEIDAGHAN MAGGIE 26Y**  
 HEATHERLEA MAGGIE 28W

SANDY BAR IDEAL 19S  
 SANDY BAR DELIA 28T  
 HF BEAMER 125S  
 HEATHERLEA MAGGIE 3S

BW: 79 LBS 205 DW: 664 LBS. FEB.17/16 WT: 1210 LBS.

EPDS	BW	WW	YW	MILK	TM
	-1.3	49	93	22	47



# 15 SHEIDAGHAN UPWARD 37C

1843840 VMF 37C FEB. 11, 2015 CE ★

CONNEALY ONWARD DMF AMF CAF NHF DDF  
**SITZ UPWARD 307R** DMF AMF CAF NHF DDF  
 SITZ HENRIETTA PRIDE 81M

CONNEALY LEAD ON DMF AMF CAF NHF DDF  
 ALTUNE OF CONANGA 6104  
 SITZ VALUE 7097 AMF CAF NHF DDF  
 SITZ HENRIETTA PRIDE 1370

RR SCOTCHMAN 2999  
**SHEIDAGHAN EILEEN 183Y**  
 SANDY BAR EILEEN 132R

E X A R SCOTCH CAP 816 AMF CAF NHF DDF  
 ERICA LASSIE OF R R 8464  
 LAMBS INNOVATOR 86J  
 VBR EILEEN 129J

BW: 94 LBS 205 DW: 764 LBS. FEB.17/16 WT: 1370 LBS.

EPDS	BW	WW	YW	MILK	TM
	2.8	60	114	28	58





16



## 16 SHEIDAGHAN BAND WAGON 43C

1843930 VMF 43C FEB. 12, 2015 CE ★★★

LT BANDWAGON 3105 AMF CAF NHF DDF  
**MERIT 2005**  
 MERIT COUNTESS 3X

BUCK LAKE OUTFITTER 104X  
**ABACUS PATRICIA 52A**  
 WILLABAR PATRICIA 60R

LEACHMAN RIGHT TIME DMF AMF  
 LT MS VIKINGS VALUE 0256  
 MERIT LUKE 3120  
 MERIT COUNTESS 8781

SITZ UPWARD 307R DMF AMF CAF NHF DDF  
 UBAR 12U MAGGIE  
 WILLABAR AMBUSH 86K  
 WILLABAR PATRICIA 18H

BW: 81 LBS 205 DW: 772 LBS. FEB.17/16 WT: 1255 LBS.

EPDS	BW	WW	YW	MILK	TM
	1.3	49	84	26	51



17



## 17 SHEIDAGHAN FOCUS 45C

1843743 VMF 45C FEB. 13, 2015 CE★★

MYTTY IN FOCUS AMF CAF NHF DDF  
**CUDLOBE IN FOCUS 55** NHF DDF  
 CUDLOBE ENCHANTRESS 55M

HEATHERLEA EXTRA 31U  
**HEATHERLEA MAGGIE 20X**  
 HEATHERLEA MAGGIE 21T

S A F FOCUS OF E R AMF CAF NHF DDF  
 MYTTY COUNTESS 906  
 BON VIEW NEW DESIGN 1407 AMF CAF NHF DDF  
 CUDLOBE ENCHANTRESS 47H

HEATHERLEA EXTRA 12S  
 GLEN ISLAY LADY M 20F  
 GLEN ISLAY BATTLE CRY 27L  
 GLEN ISLAY MAGGIE 13L

BW: 92 LBS 205 DW: 654 LBS. FEB.17/16 WT: 1150 LBS.

EPDS	BW	WW	YW	MILK	TM
	2.1	45	91	19	42



18



## 18 SHEIDAGHAN GREAT SCOT 48C

1843749 VMF 48C FEB. 13, 2015 CE★★

E X A R SCOTCH CAP 816 AMF CAF NHF DDF  
**RR SCOTCHMAN 2999**  
 ERICA LASSIE OF R R 8464

BJ'S FORT WALSH 823  
**SHEIDAGHAN PRIDE 037X**  
 VALLEY BLOSSOM PRIDE 790R

R R SCOTCHCAP 9440 AMF NHF  
 LEACHMAN BLACKCAP 2202  
 R R FERDINAND 758D AMF CAF NHF DDF  
 ERICA LASSIE OF R R 4580

TC STOCKMAN 365 DDF  
 HOFF EBONY S C 660 2131  
 SANDY BAR PFRED 41M  
 VALLEY BLOSSOM PRIDE 702N

BW: 81 LBS 205 DW: 683 LBS. FEB.17/16 WT: 1260 LBS.

EPDS	BW	WW	YW	MILK	TM
	-0.1	39	75	18	38

## 19 SHEIDAGHAN ANSWER 50C

1843900 VMF 50C FEB. 13, 2015 CE★★

SITZ TRAVELER 8180 AMF CAF NHF DDF  
**S A V FINAL ANSWER 0035** AMF CAF NHF DDF  
 S A V EMULOUS 8145 CAF

RR SCOTCHMAN 2999  
**SHEIDAGHAN PRIDE LADY 98Z**  
 SHEIDAGHAN PRIDE LADY 859U

G D A R TRAVELER 71 AMF CAF NHF DDF  
 SITZ EVERELDA ENTENSE 1137  
 BON VIEW BANDO 598 AMF CAC DDF  
 S A V SKY EMULOUS 2124

E X A R SCOTCH CAP 816 AMF CAF NHF DDF  
 ERICA LASSIE OF R R 8464  
 SANDY BAR IDEAL 72S  
 VALLEY BLOSSOM PRIDE LADY 808R

BW: 90 LBS 205 DW: 830 LBS. FEB.17/16 WT: 1340 LBS.

EPDS	BW	WW	YW	MILK	TM
	1.0	62	106	22	53



**20** SHEIDAGHAN **ANSWER 51C**  
 1843892 VMF 51C FEB. 13, 2015 CE ★★

SITZ TRAVELER 8180 AMF CAF NHF DDF  
**S A V FINAL ANSWER 0035** AMF CAF NHF DDF  
 S A V EMULOUS 8145 CAF

G D A R TRAVELER 71 AMF CAF NHF DDF  
 SITZ EVERELDA ENTENSE 1137  
 BON VIEW BANDO 598 AMF CAC DDF  
 S A V SKY EMULOUS 2124

LEACHMAN RIGHT TIME DMF AMF  
**SHEIDAGHAN MISS LILY 65Z**  
 SHEIDAGHAN MISS LILY 5W

N BAR EMULATION EXT AMF CAF NHF DDF  
 LEACHMAN ERICA 0025  
 SANDY BAR IDEAL 19S  
 SANDY BAR MISS 120T

BW: 91 LBS 205 DW: 718 LBS. FEB.17/16 WT: 1110 LBS.

EPDS	BW	WW	YW	MILK	TM
	0.5	53	93	23	50

**21** SHEIDAGHAN **ANSWER 53C**  
 1843872 VMF 53C FEB. 14, 2015 CE ★★

SITZ TRAVELER 8180 AMF CAF NHF DDF  
**S A V FINAL ANSWER 0035** AMF CAF NHF DDF  
 S A V EMULOUS 8145 CAF

G D A R TRAVELER 71 AMF CAF NHF DDF  
 SITZ EVERELDA ENTENSE 1137  
 BON VIEW BANDO 598 AMF CAC DDF  
 S A V SKY EMULOUS 2124

LEACHMAN RIGHT TIME DMF AMF  
**SHEIDAGHAN MISS LILY 52Z**  
 SHEIDAGHAN MISS LILY 5W

N BAR EMULATION EXT AMF CAF NHF DDF  
 LEACHMAN ERICA 0025  
 SANDY BAR IDEAL 19S  
 SANDY BAR MISS 120T

BW: 89 LBS 205 DW: 694 LBS. FEB.17/16 WT: 1140 LBS.

EPDS	BW	WW	YW	MILK	TM
	0.3	51	90	21	47

**22** SHEIDAGHAN **UPWARD 55C**  
 1843536 VMF 55C FEB. 14, 2015 CE ★

CONNEALY ONWARD DMF AMF CAF NHF DDF  
**SITZ UPWARD 307R** DMF AMF CAF NHF DDF  
 SITZ HENRIETTA PRIDE 81M

CONNEALY LEAD ON DMF AMF CAF NHF DDF  
 ALTUNE OF CONANGA 6104  
 SITZ VALUE 7097 AMF CAF NHF DDF  
 SITZ HENRIETTA PRIDE 1370

BEVERLY HILLS FANDANGO 404  
**SHEIDAGHAN ROSEBUD 807U Elite**  
 CRESCENT CREEK ROSEBUD 38K

STEVENSON BRUNO 561G CAF NHF DDF  
 H A RITO LADY 1262  
 DOUBLE BAR ROGUE CAF  
 CRESCENT CREEK ROSEBUD 115F

BW: 88 LBS 205 DW: 639 LBS. FEB.17/16 WT: 1155 LBS.

EPDS	BW	WW	YW	MILK	TM
	3.4	48	90	28	52

**23** SHEIDAGHAN **UPWARD 56C**  
 1843857 VMF 56C FEB. 15, 2015 CE ★

CONNEALY ONWARD DMF AMF CAF NHF DDF  
**SITZ UPWARD 307R** DMF AMF CAF NHF DDF  
 SITZ HENRIETTA PRIDE 81M

CONNEALY LEAD ON DMF AMF CAF NHF DDF  
 ALTUNE OF CONANGA 6104  
 SITZ VALUE 7097 AMF CAF NHF DDF  
 SITZ HENRIETTA PRIDE 1370

SANDY BAR EQUATOR 150S  
**SHEIDAGHAN BLACKBIRD 202Y**  
 VALLEY BLOSSOM BLACKCAP 729R

VALLEY BLOSSOM EQUATOR 729M  
 SANDY BAR DUCHESS 114E  
 SAR STOCKMAN 81K  
 VBR BLACKCAP 211H

BW: 91 LBS 205 DW: 727 LBS. FEB.17/16 WT: 1315 LBS.

EPDS	BW	WW	YW	MILK	TM
	2.9	54	100	28	55

**24** SHEIDAGHAN **ANSWER 70C**  
 1843661 VMF 70C FEB. 18, 2015 CE ★★

SITZ TRAVELER 8180 AMF CAF NHF DDF  
**S A V FINAL ANSWER 0035** AMF CAF NHF DDF  
 S A V EMULOUS 8145 CAF

G D A R TRAVELER 71 AMF CAF NHF DDF  
 SITZ EVERELDA ENTENSE 1137  
 BON VIEW BANDO 598 AMF CAC DDF  
 S A V SKY EMULOUS 2124

SILVER DOME DYNASTY 19T  
**LOOKOUT TRIM LASS 88W**  
 LOOKOUT TRIM LASS 23R

WANDERING CRK DYNASTY JRM 2F  
 SILVER DOME OAKLEAF 119L  
 LOOKOUT PACESETTER 258M  
 GEIS TRIM LASS 72'99

BW: 86 LBS 205 DW: 705 LBS. FEB.17/16 WT: 1145 LBS.

EPDS	BW	WW	YW	MILK	TM
	0.6	48	78	19	43



## 25 SHEIDAGHAN BARDOLENE 71C

1843534 VMF 71C FEB. 18, 2015 CE ★

DOUBLE AA BARDOLENE 47'04  
**DOUBLE AA BARDOLENE 50'08**  
 DOUBLE AA ANNIE K 280'96

CAR IDEAL 061  
**CRESCENT CREEK ROSEBUD 85U Elite**  
 CRESCENT CREEK ROSEBUD 52P

DOUBLE AA BARDOLENE 8'98  
 DOUBLE AA ANNIE K 289'02  
 ANGUS ACRES WINSTON 249B  
 DOUBLE AA ANNIE K 218'92

C A R IDEAL 650  
 C A R MISS VIKING 601  
 RR SCOTCHMAN 2999  
 CRESCENT CREEK ROSEBUD 42M

BW: 96 LBS 205 DW: 671 LBS. FEB.17/16 WT: 1215 LBS.

EPDS	BW	WW	YW	MILK	TM
	4.3	36	68	20	38

## 26 SHEIDAGHAN BARDOLENE 74C

1843743 VMF 74C FEB. 18, 2015 CE ★

DOUBLE AA BARDOLENE 47'04  
**DOUBLE AA BARDOLENE 50'08**  
 DOUBLE AA ANNIE K 280'96

SANDY BAR ADVANTAGE 506S  
**SHEIDAGHAN HEROINE 867U**  
 SANDY BAR HEROINE 138R

DOUBLE AA BARDOLENE 8'98  
 DOUBLE AA ANNIE K 289'02  
 ANGUS ACRES WINSTON 249B  
 DOUBLE AA ANNIE K 218'92

VALLEY BLOSSOM ADVANTAGE 732M  
 SANDY BAR MIA 719K  
 REMITALL LIGHTENING 2L  
 VBR HEROINE 123J

BW: 91 LBS 205 DW: 719 LBS. FEB.17/16 WT: 1210 LBS.

EPDS	BW	WW	YW	MILK	TM
	2.2	38	66	15	34



## 27 SHEIDAGHAN ANSWER 76C

1843873 VMF 76C FEB. 19, 2015 CE ★

SITZ TRAVELER 8180 AMF CAF NHF DDF  
**S A V FINAL ANSWER 0035** AMF CAF NHF DDF  
 S A V EMULOUS 8145 CAF

MERIT 8808  
**GLENDOR FAVOURITE 56Z**  
 GLENDOR FAVORITE 41S

G D A R TRAVELER 71 AMF CAF NHF DDF  
 SITZ EVERELDA ENTENSE 1137  
 BON VIEW BANDO 598 AMF CAC DDF  
 S A V SKY EMULOUS 2124

ROYAL FORTE DRCC 5138R  
 MERIT COUNTESS 6087  
 WINDOVER MATRIX 35N  
 GLENDOR FAVORITE 3M

BW: 88 LBS 205 DW: 720 LBS. FEB.17/16 WT: 1200 LBS.

EPDS	BW	WW	YW	MILK	TM
	2.2	52	91	20	46



## 28 SHEIDAGHAN ALASKAN 83C

1843834 VMF 83C FEB. 21, 2015 CE ★

HF ALASKAN 94T  
**DBRL ALASKAN 57X**  
 DBRL 03M PATRICIA 21U

RR SCOTCHMAN 2999  
**SHEIDAGHAN ERROLLINE 160Y**  
 CRESCENT CREEK ERROLLINE 143U

HF KODIAK 5R AMF CAF NHF MAF DDF  
 HF ECHO 112R  
 DMM AMBUSH 03M  
 DBRL RT PATRICIA 9R

E X A R SCOTCH CAP 816 AMF CAF NHF DDF  
 ERICA LASSIE OF R R 8464  
 BEVERLY HILLS FANDANGO 404  
 CRESCENT CREEK ERROLLINE 27R

BW: 84 LBS 205 DW: 725 LBS. FEB.17/16 WT: 1255 LBS.

EPDS	BW	WW	YW	MILK	TM
	2.2	54	88	17	44

## 29 SHEIDAGHAN **ALASKAN** 90C

1843786 VMF 90C FEB. 23, 2015 CE ★

HF ALASKAN 94T  
**DBRL ALASKAN 57X**  
 DBRL 03M PATRICIA 21U

HF KODIAK 5R AMF CAF NHF MAF DDF  
 HF ECHO 112R  
 DMM AMBUSH 03M  
 DBRL RT PATRICIA 9R

DB OBJECTIVE TREND 861  
**SANDY BAR LINDA 109X**  
 SANDY BAR LINDA 38T

QUAKER HILL OBJECTIVE 3J15 AMF CAF NHF DDF  
 D B MS 036 TREND 072  
 SPRUCE VIEW GENERAL 67R  
 SANDY BAR LINDA 1P

BW: 101 LBS 205 DW: 779 LBS. FEB.17/16 WT: 1330 LBS.

EPDS	BW	WW	YW	MILK	TM
	3.9	48	79	22	46



29 SA SHEIDAGHAN

## 30 SHEIDAGHAN **YUKON** 95C

1843540 VMF 95C FEB. 24, 2015 CE ★

KRUGERRAND OF DONAMERE 490 AMF NHF  
**A & B YUKON 7150** AMF CAF NHF DDF  
 A & B QUEEN 4173

CAVALIER OF DONAMERE 978  
 DONAMERE BACHEL BEAUTY 288  
 C H STACKER 7040  
 A & B MAXIMA QUEEN 2007

MYTTY IN FOCUS AMF CAF NHF DDF  
**SOUTH BORDER HOLLY 841U**  
 SOUTH BORDER HOLLY 4P

S A F FOCUS OF E R AMF CAF NHF DDF  
 MYTTY COUNTESS 906  
 NICHOLS EXTRA H6 AMF CAF NHF DDF  
 HOLLBROOK LADY ANN 38L

BW: 97 LBS 205 DW: 718 LBS. FEB.17/16 WT: 1235 LBS.

EPDS	BW	WW	YW	MILK	TM
	2.7	52	101	18	44



31 SA SHEIDAGHAN

## 31 SHEIDAGHAN **ALASKAN** 96C

1843650 VMF 96C FEB. 24, 2015 CE ★

HF ALASKAN 94T  
**DBRL ALASKAN 57X**  
 DBRL 03M PATRICIA 21U

HF KODIAK 5R AMF CAF NHF MAF DDF  
 HF ECHO 112R  
 DMM AMBUSH 03M  
 DBRL RT PATRICIA 9R

SANDY BAR ADVANTAGE 33T  
**SHEIDAGHAN ANNIE K 64W**  
 VALLEY BLOSSOM ANNIE K 806R

VALLEY BLOSSOM ADVANTAGE 732M  
 SANDY BAR DELIA 508M  
 ARDA BATTLE CRY 96M  
 M BAR SIX ANNIE K 217K

BW: 95 LBS 205 DW: 736 LBS. FEB.17/16 WT: 1170 LBS.

EPDS	BW	WW	YW	MILK	TM
	2.9	46	76	19	42



32 SA SHEIDAGHAN

## 32 SHEIDAGHAN **UPWARD** 97C

1843506 VMF 97C FEB. 24, 2015 CE ★

DURALTA 307R UPWARD 49Y  
**GRANT LODGE UPWARD 18A**  
 DBRL 94T LUCY 5W

SITZ UPWARD 307R DMF AMF CAF NHF DDF  
 DURALTA 8005 FANNY 87R  
 HF ALASKAN 94T  
 DBRL 40R LUCY 24T

LAMBS INNOVATOR 86J  
**SANDY BAR ANNIE K 111R**  
 SANDY BAR ANNIE K 78K

MVHF INNOVATOR 49B  
 LAMBS BAR LASS 19D  
 CRESCENT CREEK BRAVE HEART 35F  
 SANDY BAR ANNIE K 20Y

BW: 88 LBS 205 DW: 668 LBS. FEB.17/16 WT: 1160 LBS.

EPDS	BW	WW	YW	MILK	TM
	1.8	46	81	18	41



33



### 33 SHEIDAGHAN ALASKAN 100C

1843816 VMF 100C FEB. 25, 2015 CE ★

HF ALASKAN 94T  
**DBRL ALASKAN 57X**  
 DBRL 03M PATRICIA 21U

HF KODIAK 5R AMF CAF NHF MAF DDF  
 HF ECHO 112R  
 DMM AMBUSH 03M  
 DBRL RT PATRICIA 9R

DBRL AMBUSH 33U  
**SANDY BAR PRIDE 58Y**  
 SANDY BAR PRIDE 23H

DMM AMBUSH 03M  
 DBRL FREEDOMS LUCY 5R  
 CRESCENT CREEK BRAVE HEART 35F  
 SANDY BAR PRIDE 36E

BW: 115 LBS 205 DW: 689 LBS. FEB.17/16 WT: 1150 LBS.

EPDS	BW	WW	YW	MILK	TM
	6.4	40	71	19	39



34



### 34 SHEIDAGHAN GREAT SCOT 106C

1843781 VMF 106C FEB. 26, 2015 CE ★★

E X A R SCOTCH CAP 816 AMF CAF NHF DDF  
**RR SCOTCHMAN 2999**  
 ERICA LASSIE OF R R 8464

R R SCOTCHCAP 9440 AMF NHF  
 LEACHMAN BLACKCAP 2202  
 R R FERDINAND 758D AMF CAF NHF DDF  
 ERICA LASSIE OF R R 4580

SOUTHLAND EXCLUSIVE 62U  
**SOUTHLAND VALOR 103X**  
 SOUTHLAND VALOR 129P

SOUTHLAND FREE RIDE 68R  
 SOUTHLAND SUSAN 58L  
 SOUTHLAND MATRIX 24K  
 SOUTHLAND VALOR 205M

BW: 82 LBS 205 DW: 663 LBS. FEB.17/16 WT: 1190 LBS.

EPDS	BW	WW	YW	MILK	TM
	1.2	49	86	14	39



35



### 35 SHEIDAGHAN TITAN 115C

1843805 VMF 115C FEB. 28, 2015 CE ★★

DBRL 03M TITAN 4T  
**LNS TITAN 4Y**  
 DBRL JENNIFER 1N

DMM AMBUSH 03M  
 DBRL BLACKBIRD 2N  
 HF ROOKIE 16L  
 FCR JENNIFER 42L

CRESCENT CREEK BRAVE HEART 35F  
**SHEIDAGHAN ROSEBUD 48Y**  
 CRESCENT CREEK ROSEBUD 38K

RITO 8094 PRAIRIELANE 2060 AMF  
 CRESCENT CREEK BLACKCAP 112A  
 DOUBLE BAR ROGUE CAF  
 CRESCENT CREEK ROSEBUD 115F

BW: 89 LBS 205 DW: 722 LBS. FEB.17/16 WT: 1260 LBS.

EPDS	BW	WW	YW	MILK	TM
	1.6	37	71	18	37

### 36 SHEIDAGHAN UPWARD 116C

1843729 VMF 116C FEB. 28, 2015 CE ★

DURALTA 307R UPWARD 49Y  
**GRANT LODGE UPWARD 18A**  
 DBRL 94T LUCY 5W

SITZ UPWARD 307R DMF AMF CAF NHF DDF  
 DURALTA 8005 FANNY 87R  
 HF ALASKAN 94T  
 DBRL 40R LUCY 24T

CRESCENT CREEK CHIEF 80G  
**SHEIDAGHAN ROSEBUD 007X**  
 CRESCENT CREEK ROSEBUD 85U

DWAJO CHIEF 92E  
 CRESCENT CREEK QUEEN RUTH 64D  
 CAR IDEAL 061  
 CRESCENT CREEK ROSEBUD 52P

BW: 91 LBS 205 DW: 665 LBS. FEB.17/16 WT: 1160 LBS.

EPDS	BW	WW	YW	MILK	TM
	4.0	48	86	24	48



### 37 SHEIDAGHAN UPWARD 122C

1843514 VMF 122C MAR. 1, 2015 CE ★

DURALTA 307R UPWARD 49Y  
**GRANT LODGE UPWARD 18A**  
 DBRL 94T LUCY 5W

SITZ UPWARD 307R DMF AMF CAF NHF DDF  
 DURALTA 8005 FANNY 87R  
 HF ALASKAN 94T  
 DBRL 40R LUCY 24T

YOUNG DALE TOUCH DOWN 36M  
**GERLEI PRINCESS 9S**  
 GERLEI PRINCESS 6P

YOUNG DALE REAL DEAL 18K  
 PAT LADY SANDRA 2C  
 BOYD NEW DAY 8005 AMF CAF NHF DDF  
 GLENDOR PRINCESS 47L

BW: 101 LBS 205 DW: 686 LBS. FEB.17/16 WT: 1145 LBS.

EPDS	BW	WW	YW	MILK	TM
	4.7	47	86	26	50



37 SA SHEIDAGHAN

### 38 SHEIDAGHAN ALASKAN 124C

1843838 VMF 124C MAR. 3, 2015 CE ★

HF ALASKAN 94T  
**DBRL ALASKAN 57X**  
 DBRL 03M PATRICIA 21U

HF KODIAK 5R AMF CAF NHF MAF DDF  
 HF ECHO 112R  
 DMM AMBUSH 03M  
 DBRL RT PATRICIA 9R

RR SCOTCHMAN 2999  
**SHEIDAGHAN ANNIE K 167Y**  
 VALLEY BLOSSOM ANNIE K 751T

E X A R SCOTCH CAP 816 AMF CAF NHF DDF  
 ERICA LASSIE OF R R 8464  
 LLB FULLBACK 141M  
 SANDY BAR ANNIE K 742G

BW: 101 LBS 205 DW: 744 LBS. FEB.17/16 WT: 1235 LBS.

EPDS	BW	WW	YW	MILK	TM
	4.8	51	85	22	48



38 SA SHEIDAGHAN

### 39 SHEIDAGHAN TITAN 139C

1843818 VMF 139C MAR. 6, 2015 CE ★

DBRL 03M TITAN 4T  
**LNS TITAN 4Y**  
 DBRL JENNIFER 1N

DMM AMBUSH 03M  
 DBRL BLACKBIRD 2N  
 HF ROOKIE 16L  
 FCR JENNIFER 42L

SHEIDAGHAN MILK MAN 835U  
**SHEIDAGHAN GENE 58Y**  
 VALLEY BLOSSOM GENE 732R

JSF MILK MAN 37S  
 SANDY BAR MIA 82R  
 LLB FULLBACK 141M  
 GFR GENE 17B

BW: 91 LBS 205 DW: 701 LBS. FEB.17/16 WT: 1125 LBS.

EPDS	BW	WW	YW	MILK	TM
	3.6	41	76	15	36



39 SA SHEIDAGHAN

### 40 SHEIDAGHAN BAND WAGON 13C

1843936 VMF 13C FEB. 5, 2015 CE ★★★

L T BANDWAGON 3105 AMF CAF NHF DDF  
**MERIT 200S**  
 MERIT COUNTESS 3X

LEACHMAN RIGHT TIME DMF AMF  
 L T MS VIKINGS VALUE 0256  
 MERIT LUKE 3120  
 MERIT COUNTESS 8781

CRESCENT CREEK FORTUNE 67X  
**SHEIDAGHAN QUEENETTE 123A**  
 SHEIDAGHAN QUEENETTE 845U

STEVENSON FORTUNE 425C AMF CAF NHF  
 CRESCENT CREEK ROSEBUD 15U  
 JSF MILK MAN 37S  
 VALLEY BLOSSOM QUEENETTE 792R

BW: 73 LBS 205 DW: 657 LBS. FEB.17/16 WT: 1050 LBS.

EPDS	BW	WW	YW	MILK	TM
	1.0	42	71	23	44



40 SA SHEIDAGHAN

# DVAuction

Broadcasting Real-Time Auctions

Never Miss An Auction Again!  
Watch & Bid online for FREE!

Visit [www.DVAuction.com](http://www.DVAuction.com)  
and Register Today!

For General Questions Please Contact Our Office:  
(402) 316-5460 or support@dvauction.com



## 41 SHEIDAGHAN BAND WAGON 16C

1843923 VMF 16C FEB. 6, 2015 CE ★★★

L T BANDWAGON 3105 AMF CAF NHF DDF  
MERIT 2005  
MERIT COUNTESS 3X

LEACHMAN RIGHT TIME DMF AMF  
L T MS VIKINGS VALUE 0256  
MERIT LUKE 3120  
MERIT COUNTESS 8781

S CHISUM 6175 AMF CAF NHF DDF  
SHEIDAGHAN BLACKCAP 33A  
SHEIDAGHAN BLACKCAP 042X

S ALLIANCE 3313 AMF  
S GLORIA 464  
RR SCOTCHMAN 2999  
VALLEY BLOSSOM BLACKCAP 729R

BW: 81 LBS 205 DW: 652 LBS. FEB.17/16 WT: 1060 LBS.

EPDS	BW	WW	YW	MILK	TM
	2.7	46	84	24	47

## 42 SHEIDAGHAN BAND WAGON 54C

1843927 VMF 54C FEB. 14, 2015 CE ★★★

L T BANDWAGON 3105 AMF CAF NHF DDF  
MERIT 2005  
MERIT COUNTESS 3X

LEACHMAN RIGHT TIME DMF AMF  
L T MS VIKINGS VALUE 0256  
MERIT LUKE 3120  
MERIT COUNTESS 8781

S CHISUM 6175 AMF CAF NHF DDF  
SHEIDAGHAN ROSEBUD 47A  
SHEIDAGHAN ROSEBUD 033X

S ALLIANCE 3313 AMF  
S GLORIA 464  
SANDY BAR ADVANTAGE 506S  
SHEIDAGHAN ROSEBUD 807U

BW: 78 LBS 205 DW: 673 LBS. FEB.17/16 WT: 1090 LBS.

EPDS	BW	WW	YW	MILK	TM
	1.8	47	83	25	49

## 43 SHEIDAGHAN PFRED 65C

1843871 VMF 65C FEB. 17, 2015 CE ★★★

SANDY BAR PFRED 41M  
SHEIDAGHAN PFRED 208Z  
SANDY BAR LADY 78X

SUMMITCREST HI FLYER 3B18 AMF CAF NHF DDF  
SANDY BAR MISS QUALITY 1K  
SANDY BAR IDEAL 18S  
SANDY BAR LADY 51J

MERIT 8808  
GLENDOR ELLA MINA 51Z  
GLENDOR ELLA MINA 15U

ROYAL FORTE DRCC 5138R  
MERIT COUNTESS 6087  
WINDOVER MATRIX 35N  
GLENDOR ELLA MINA 37R

BW: 78 LBS 205 DW: 652 LBS. FEB.17/16 WT: 1075 LBS.

EPDS	BW	WW	YW	MILK	TM
	0.7	33	62	16	33

## 44 SHEIDAGHAN BAND WAGON 67C

1843913 VMF 67C FEB. 17, 2015 CE ★★★

L T BANDWAGON 3105 AMF CAF NHF DDF  
MERIT 2005  
MERIT COUNTESS 3X

LEACHMAN RIGHT TIME DMF AMF  
L T MS VIKINGS VALUE 0256  
MERIT LUKE 3120  
MERIT COUNTESS 8781

S CHISUM 6175 AMF CAF NHF DDF  
SHEIDAGHAN QUEEN 8A  
LOOKOUT QUEEN 92X

S ALLIANCE 3313 AMF  
S GLORIA 464  
LOOKOUT STORM 66U  
DRYLAND QUEEN 453

BW: 82 LBS 205 DW: 658 LBS. FEB.17/16 WT: 1020 LBS.

EPDS	BW	WW	YW	MILK	TM
	1.9	41	76	25	46

## 45 SHEIDAGHAN UPWARD 73C (TWIN)

1843750 VMF 73C FEB. 18, 2015 CE ★

DURALTA 307R UPWARD 49Y  
**GRANT LODGE UPWARD 18A**  
 DBRL 94T LUCY 5W

SITZ UPWARD 307R DMF AMF CAF NHF DDF  
 DURALTA 8005 FANNY 87R  
 HF ALASKAN 94T  
 DBRL 40R LUCY 24T

RR SCOTCHMAN 2999  
**SHEIDAGHAN BLACKCAP 042X**  
 VALLEY BLOSSOM BLACKCAP 729R

E X A R SCOTCH CAP 816 AMF CAF NHF DDF  
 ERICA LASSIE OF R R 8464  
 SAR STOCKMAN 81K  
 VBR BLACKCAP 211H

BW: 83 LBS 205 DW: 613 LBS. FEB.17/16 WT: 1120 LBS.

EPDS	BW	WW	YW	MILK	TM
	3.2	50	89	24	48

VIEW THE CATALOGUE  
 ONLINE AT

[WWW.SHEIDAGHANANGHUS.COM](http://WWW.SHEIDAGHANANGHUS.COM)

[WWW.BUYAGRO.COM](http://WWW.BUYAGRO.COM)

## 46 SHEIDAGHAN BAND WAGON 79C

1843939 VMF 79C FEB. 20, 2015 CE ★

L T BANDWAGON 3105 AMF CAF NHF DDF  
**MERIT 2005**  
 MERIT COUNTESS 3X

LEACHMAN RIGHT TIME DMF AMF  
 L T MS VIKINGS VALUE 0256  
 MERIT LUKE 3120  
 MERIT COUNTESS 8781

S A V 004 DENSITY 4336 AMF CAF NHF DDF  
**MAPLE SPRINGS BELLE 215A**  
 BROOKMORE BELLE 215Y

SAV8180TRAVELER004 DMF DMF AMF CAF NHF OSF DDF  
 S A V MAY 7238 CAF DDF  
 SITZ UPWARD 307R DMF AMF CAF NHF DDF  
 BROOKMORE BELLE 14R

BW: 85 LBS 205 DW: 660 LBS. FEB.17/16 WT: 1040 LBS.

EPDS	BW	WW	YW	MILK	TM
	2.4	43	83	25	47



## 47 SHEIDAGHAN GREAT SCOT 88C

1843859 VMF 88C FEB. 23, 2015 CE ★

E X A R SCOTCH CAP 816 AMF CAF NHF DDF  
**RR SCOTCHMAN 2999**  
 ERICA LASSIE OF R R 8464

R R SCOTCHCAP 9440 AMF NHF  
 LEACHMAN BLACKCAP 2202  
 R R FERDINAND 758D AMF CAF NHF DDF  
 ERICA LASSIE OF R R 4580

SANDY BAR EQUATOR 150S  
**SHEIDAGHAN ANNIE K 206Y**  
 SANDY BAR ANNIE K 46T

VALLEY BLOSSOM EQUATOR 729M  
 SANDY BAR DUCHESS 114E  
 VALLEY BLOSSOM LIGHTENING 706P  
 SANDY BAR ANNIE K 18K

BW: 101 LBS 205 DW: 651 LBS. FEB.17/16 WT: 1105 LBS.

EPDS	BW	WW	YW	MILK	TM
	4.9	36	69	22	40



## 48 SHEIDAGHAN BAND WAGON 94C

1843918 VMF 94C FEB. 24, 2015 CE ★★★

L T BANDWAGON 3105 AMF CAF NHF DDF  
**MERIT 2005**  
 MERIT COUNTESS 3X

LEACHMAN RIGHT TIME DMF AMF  
 L T MS VIKINGS VALUE 0256  
 MERIT LUKE 3120  
 MERIT COUNTESS 8781

S A V FINAL ANSWER 0035 AMF CAF NHF DDF  
**SHEIDAGHAN BARBARA 23A**  
 SHEIDAGHAN BARBARA 109Y

SITZ TRAVELER 8180 AMF CAF NHF DDF  
 S A V EMULOUS 8145 CAF  
 RR SCOTCHMAN 2999  
 SANDY BAR BARBARA 94R

BW: 82 LBS 205 DW: 719 LBS. FEB.17/16 WT: 1105 LBS.

EPDS	BW	WW	YW	MILK	TM
	0.1	47	84	24	48



49



## 49 SHEIDAGHAN WORLD WIDE 98C

1843824 VMF 98C FEB. 24, 2015 CE ★★

S A V WORLDWIDE 9088  
**MCC WORLDWIDE 8Z**  
 REMITTALL KEEPSAKE 143L

TC STOCKMAN 365 DDF  
**SHEIDAGHAN ROSEBUD 69Y**  
 CRESCENT CREEK ROSEBUD 38K

WAIMATA E230  
 S A V ABIGALE 5650 CAF  
 SITZ ALLIANCE 6595 DMF AMF CAF NHF DDF  
 REMITTALL KEEPSAKE 103J

TC STOCKMAN  
 TC PRIDE 0014  
 DOUBLE BAR ROGUE CAF  
 CRESCENT CREEK ROSEBUD 115F

BW: 84 LBS 205 DW: 647 LBS. FEB.17/16 WT: 1090 LBS.

EPDS	BW	WW	YW	MILK	TM
	1.8	27	58	26	40



50



## 50 SHEIDAGHAN WAR BONNET 101C

1843869 VMF 101C FEB. 26, 2015 CE ★★★

EXAR WAR BONNET 9253B DDF  
**SHEIDAGHAN WAR BONNET 89Y**  
 EXAR SHOSHONE LADY 9130

LEACHMAN RIGHT TIME DMF AMF  
**SHEIDAGHAN MISS LILY 46Z**  
 SHEIDAGHAN MISS LILY 5W

RITO GEM3 OF 4L1 EMBLAZON AMF CAF NHF DDF  
 WK PRINCESS 1194  
 BC 7022 RAVEN 7965 DMF DMF AMF CAF NHF DDF  
 RR SHOSHONE LADY 4539

N BAR EMULATION EXT AMF CAF NHF DDF  
 LEACHMAN ERICA 0025  
 SANDY BAR IDEAL 19S  
 SANDY BAR MISS 120T

BW: 81 LBS 205 DW: 665 LBS. FEB.17/16 WT: 1080 LBS.

EPDS	BW	WW	YW	MILK	TM
	-1.4	43	75	18	40



52



## 52 SHEIDAGHAN WAR BONNET 107C

1843865 VMF 107C FEB. 26, 2015 CE ★★★

EXAR WAR BONNET 9253B DDF  
**SHEIDAGHAN WAR BONNET 89Y**  
 EXAR SHOSHONE LADY 9130

SANDY BAR IDEAL 18S 2X  
**SHEIDAGHAN ANNIE K 28Z**  
 SHEIDAGHAN ANNIE K 103X

RITO GEM3 OF 4L1 EMBLAZON AMF CAF NHF DDF  
 WK PRINCESS 1194  
 BC 7022 RAVEN 7965 DMF DMF AMF CAF NHF DDF  
 RR SHOSHONE LADY 4539

SANDY BAR IDEAL 18S  
 SANDY BAR MISS QUALITY 1K  
 RR SCOTCHMAN 2999  
 VALLEY BLOSSOM ANNIE K 720T

BW: 76 LBS 205 DW: 651 LBS. FEB.17/16 WT: 1080 LBS.

EPDS	BW	WW	YW	MILK	TM
	0.5	43	72	17	38

# 53 SHEIDAGHAN *World Wide* 109C

1843820 VMF 109C FEB. 27, 2015 CE ★

S A V WORLDWIDE 9088  
**MCC WORLDWIDE 8Z**  
 REMITALL KEEPSAKE 143L

WAIMATA E230  
 S A V ABIGALE 5650 CAF  
 SITZ ALLIANCE 6595 DMF AMF CAF NHF DDF  
 REMITALL KEEPSAKE 103J

BJ'S FORT WALSH 823  
**SHEIDAGHAN MS QUALITY 60Y**  
 SANDY BAR MISS QUALITY 116T

TC STOCKMAN 365 DDF  
 HOFF EBONY S C 660 2131  
 LLB 5175 BANDO 190P  
 SANDY BAR MISS QUALITY 17M

BW: 90 LBS 205 DW: 664 LBS. FEB.17/16 WT: 1080 LBS.

EPDS	BW	WW	YW	MILK	TM
	2.6	25	55	28	41



53 SA SHEIDAGHAN

# 54 SHEIDAGHAN *Alaskan* 118C

1843751 VMF 118C FEB. 28, 2015 CE ★

HF ALASKAN 94T  
**DBRL ALASKAN 57X**  
 DBRL 03M PATRICIA 21U

HF KODIAK 5R AMF CAF NHF MAF DDF  
 HF ECHO 112R  
 DMM AMBUSH 03M  
 DBRL RT PATRICIA 9R

HF XTREME 117U  
**SOUTHLAND SHANIA 42X**  
 SOUTHLAND SHANIA 103T

HF KODIAK 5R AMF CAF NHF MAF DDF  
 HFDF ECHO 13N  
 KJN FUSION 4P  
 SOUTHLAND SHANIA 141N

BW: 98 LBS 205 DW: 661 LBS. FEB.17/16 WT: 1090 LBS.

EPDS	BW	WW	YW	MILK	TM
	3.5	43	71	19	41



54 SA SHEIDAGHAN

# 55 SHEIDAGHAN *War Bonnet* 125C

1843864 VMF 125C MAR. 3, 2015 CE ★★★

EXAR WAR BONNET 9253B DDF  
**SHEIDAGHAN WAR BONNET 89Y**  
 EXAR SHOSHONE LADY 9130

RITO 6EM3 OF 4L1 EMBLAZON AMF CAF NHF DDF  
 WK PRINCESS 1194  
 BC 7022 RAVEN 7965 DMF DMF AMF CAF NHF DDF  
 RR SHOSHONE LADY 4539

LEACHMAN RIGHT TIME DMF AMF  
**SHEIDAGHAN MISS LILY 27Z 1673735**  
 SHEIDAGHAN MISS LILY 5W

N BAR EMULATION EXT AMF CAF NHF DDF  
 LEACHMAN ERICA 0025  
 SANDY BAR IDEAL 19S  
 SANDY BAR MISS 120T

BW: 83 LBS 205 DW: 654 LBS. FEB.17/16 WT: 1120 LBS.

EPDS	BW	WW	YW	MILK	TM
	-0.5	45	78	16	39

# 56 SHEIDAGHAN *World Wide* 128C

1843520 VMF 128C MAR. 4, 2015 CE ★★

S A V WORLDWIDE 9088  
**MCC WORLDWIDE 8Z**  
 REMITALL KEEPSAKE 143L

WAIMATA E230  
 S A V ABIGALE 5650 CAF  
 SITZ ALLIANCE 6595 DMF AMF CAF NHF DDF  
 REMITALL KEEPSAKE 103J

EBON HILL LIBERTY 13'01  
**GERLEI BLACKCAP 70T**  
 HOWE MS BLACKCAP 113P

G D A R ROLLS ROYCE 203  
 EBON HILL J MISS MORRISON 3'95  
 YOUNG DALE TOUCH DOWN 36M  
 WINDOVER BLACKCAP 5H

BW: 87 LBS 205 DW: 647 LBS. FEB.17/16 WT: 1060 LBS.

EPDS	BW	WW	YW	MILK	TM
	1.4	25	55	23	36



## 57 SHEIDAGHAN WORLD WIDE 134C

1843821 VMF 134C MAR. 5, 2015 CE ★★

S A V WORLDWIDE 9088  
**MCC WORLDWIDE 8Z**  
 REMITALL KEEPSAKE 143L

WAIMATA E230  
 S A V ABIGALE 5650 CAF  
 SITZ ALLIANCE 6595 DMF AMF CAF NHF DDF  
 REMITALL KEEPSAKE 103J

DBRL AMBUSH 33U  
**SANDY BAR BESSIE 66Y**  
 HF BESSIE 222U

DMM AMBUSH 03M  
 DBRL FREEDOMS LUCY 5R  
 HF DONE RIGHT 125R  
 HF BESSIE 94L

BW: 86 LBS 205 DW: 656 LBS. FEB.17/16 WT: 1040 LBS.

EPDS	BW	WW	YW	MILK	TM
	1.5	26	64	26	39



## 58 SHEIDAGHAN TITAN 135C

1843622 VMF 135C MAR. 5, 2015 CE ★

DBRL 03M TITAN 4T  
**LNS TITAN 4Y**  
 DBRL JENNIFER 1N

DMM AMBUSH 03M  
 DBRL BLACKBIRD 2N  
 HF ROOKIE 16L  
 FCR JENNIFER 42L

WERNER STREET SENSE 247  
**SOUTHLAND ERROLINE 48W**  
 SOUTHLAND ERROLINE 44L

SCHURRTOP MC 2500 AMF CAF DDF  
 WERNER FALCON JILT 356R  
 SCA 03H OF IDEAL 1418  
 SCA ERROLINE 16H

BW: 96 LBS 205 DW: 612 LBS. FEB.17/16 WT: 1055 LBS.

EPDS	BW	WW	YW	MILK	TM
	3.2	32	70	12	28



## 60 SHEIDAGHAN TITAN 151C

1843793 VMF 151C MAR. 13, 2015 CE ★★★

DBRL 03M TITAN 4T  
**LNS TITAN 4Y**  
 DBRL JENNIFER 1N

DMM AMBUSH 03M  
 DBRL BLACKBIRD 2N  
 HF ROOKIE 16L  
 FCR JENNIFER 42L

GEIS BLACKMAN 224'05  
**GEIS OAKLEAF 253'10**  
 GEIS OAKLEAF 60'07

GEIS BLACKMAN 186'00  
 GEIS PRIDE 139'01  
 MINBURN MASTERPLAN 26P  
 GEIS OAKLEAF 126'99

BW: 72 LBS 205 DW: 680 LBS. FEB.17/16 WT: 1040 LBS.

EPDS	BW	WW	YW	MILK	TM
	-1.5	33	61	13	30

# Sight Unseen Purchase Program

Buyers unable to attend the sale may call ahead of time to discuss bulls or the type of bull at a price that suits their needs. Rocky or Monty will personally handle these orders. We guarantee complete satisfaction for bulls purchased in this manner.

Contact: Rocky Hough 403.548.9829 or Monty Bowyer 306.662.7902 or any of the sale staff.

Videos of the bulls and our catalogue can be found on our website [www.sheidaghananghus.com](http://www.sheidaghananghus.com), [www.everythingangus.com](http://www.everythingangus.com), [www.buyagro.com](http://www.buyagro.com) and on the Canadian Angus Association website.

Please stop out at the ranch any time before the sale to view the bulls. We'll be happy to show you around.

## PLEASE REMEMBER:

This is **NOT** a video sale. Live bulls will enter the sale ring.



S  
I  
G  
H  
T  
  
U  
N  
S  
E  
E  
N  
  
P  
U  
R  
C  
H  
A  
S  
E  
  
P  
R  
O  
G  
R  
A  
M



**1A** SHEIDAGHAN **MISS LILY 19C**  
1843610 VMF 19C FEB. 7, 2015

DOUBLE AA BARDOLENE 47'04  
**DOUBLE AA BARDOLENE 50'08**  
DOUBLE AA ANNIE K 280'96

SANDY BAR IDEAL 19S  
**SHEIDAGHAN MISS LILY 5W**  
SANDY BAR MISS 120T

DOUBLE AA BARDOLENE 8'98  
DOUBLE AA ANNIE K 289'02  
ANGUS ACRES WINSTON 249B  
DOUBLE AA ANNIE K 218'92

PRAIRIELANE IDEAL 7451-2014  
RON'S DELIA 22H  
LLB 5175 BANDO 190P  
BRYMOR MISS 3L

BW: 93 LBS 205 DW: 652 LBS. FEB.17/16 WT: 995 LBS.

EPDS	BW	WW	YW	MILK	TM
	1.9	42	79	19	40

**1B** SHEIDAGHAN **ERICA 23C**  
1843529 VMF 23C FEB. 9, 2015

DOUBLE AA BARDOLENE 47'04  
**DOUBLE AA BARDOLENE 50'08**  
DOUBLE AA ANNIE K 280'96

REMINGTON COPENHAGEN 188R  
**LOOKOUT ERICA 40U**  
LAZY RC C H ERICA 341N

DOUBLE AA BARDOLENE 8'98  
DOUBLE AA ANNIE K 289'02  
ANGUS ACRES WINSTON 249B  
DOUBLE AA ANNIE K 218'92

SCA 3299 OF IDEAL 1418  
DRYLAND LADY BATE 275  
SCA FORTE 02J  
CH ERICA 9526

BW: 88 LBS 205 DW: 622 LBS. FEB.17/16 WT: 995 LBS.

EPDS	BW	WW	YW	MILK	TM
	3.5	35	66	23	41



**2A** SHEIDAGHAN **ROSEBUD 64C**  
1843916 VMF 64C FEB. 17, 2015

L T BANDWAGON 3105 AMF CAF NHF DDF  
**MERIT 2005**  
MERIT COUNTESS 3X

S A V FINAL ANSWER 0035 AMF CAF NHF DDF  
**SHEIDAGHAN ROSEBUD 19A**  
SHEIDAGHAN ROSEBUD 70Y

LEACHMAN RIGHT TIME DMF AMF  
L T MS VIKINGS VALUE 0256  
MERIT LUKE 3120  
MERIT COUNTESS 8781

SITZ TRAVELER 8180 AMF CAF NHF DDF  
S A V EMULOUS 8145 CAF  
TC STOCKMAN 365 DDF  
CRESCENT CREEK ROSEBUD 38K

BW: 68 LBS 205 DW: 613 LBS. FEB.17/16 WT: 865 LBS.

EPDS	BW	WW	YW	MILK	TM
	-0.4	44	78	26	48



**2B** SHEIDAGHAN **SHANIA 103C**  
1843907 VMF 103C FEB. 26, 2015

EXAR WAR BONNET 9253B DDF  
**SHEIDAGHAN WAR BONNET 89Y**  
EXAR SHOSHONE LADY 9130

SANDY BAR IDEAL 19S 185W  
**SHEIDAGHAN SHANIA 210Z**  
SOUTHLAND SHANIA 42X

RITO GEM3 OF 4L1 EMBLAZON AMF CAF NHF DDF  
WK PRINCESS 1194  
BC 7022 RAVEN 7965 DMF DMF AMF CAF NHF DDF  
RR SHOSHONE LADY 4539

SANDY BAR IDEAL 19S  
SANDY BAR ANNIE K 62T  
HF XTREME 117U  
SOUTHLAND SHANIA 103T

BW: 81 LBS 205 DW: 618 LBS. FEB.17/16 WT: 950 LBS.

EPDS	BW	WW	YW	MILK	TM
	0.4	40	67	19	39



### 3A SHEIDAGHAN TILDA 31C

1843615 VMF 31C FEB. 10, 2015

MYTTY IN FOCUS AMF CAF NHF DDF  
**CUDLOBE IN FOCUS 55** NHF DDF  
 CUDLOBE ENCHANTRESS 55M

S A F FOCUS OF E R AMF CAF NHF DDF  
 MYTTY COUNTESS 906  
 BON VIEW NEW DESIGN 1407 AMF CAF NHF DDC  
 CUDLOBE ENCHANTRESS 47H

SOO LINE ICEBERG 6136  
**SHEIDAGHAN TILDA 39W**  
 SANDY BAR TILDA 16T

EASTONDALE ICEBERG 05'04  
 DWAJO JESTRESS 3P  
 THOUSAND HILLS CREDESCENCE 5N  
 L 6 TILDA 9N

BW: 81 LBS 205 DW: 597 LBS. FEB.17/16 WT: 970 LBS.

EPDS	BW	WW	YW	MILK	TM
	1.1	47	89	20	44



3A SHEIDAGHAN

### 3B SHEIDAGHAN PRIDE LADY 62C

1843674 VMF 62C FEB. 17, 2015

MYTTY IN FOCUS AMF CAF NHF DDF  
**CUDLOBE IN FOCUS 55** NHF DDF  
 CUDLOBE ENCHANTRESS 55M

S A F FOCUS OF E R AMF CAF NHF DDF  
 MYTTY COUNTESS 906  
 BON VIEW NEW DESIGN 1407 AMF CAF NHF DDC  
 CUDLOBE ENCHANTRESS 47H

CRESCENT CREEK PACESETTER 20T  
**SHEIDAGHAN PRIDE LADY 109W**  
 VALLEY BLOSSOM PRIDE LADY 808R

LOOKOUT PACESETTER 258M  
 CRESCENT CREEK BLACKBIRD 138N  
 ARDA BATTLE CRY 96M  
 SANDY BAR PRIDE LADY 75F

BW: 92 LBS 205 DW: 667 LBS. FEB.17/16 WT: 1060 LBS.

EPDS	BW	WW	YW	MILK	TM
	2.6	49	93	20	45

### 4A SHEIDAGHAN PRIDE LADY 11C

1843533 VMF 11C FEB. 4, 2015

S A V FINAL ANSWER 0035 AMF CAF NHF DDF  
**S A V THUNDERBIRD 9061**  
 S A V EMBLYNETTE 7411 CAF

SITZ TRAVELER 8180 AMF CAF NHF DDF  
 S A V EMULOUS 8145 CAF  
 S A V BISMARCK 5682 AMF CAF NHF DDF  
 S A V EMBLYNETTE 4408 CAF

CRESCENT CREEK ALLIANCE 29N  
**CRESCENT CREEK PRIDE LADY 58U**  
 CRESCENT CREEK PRIDE LADY 83H

SITZ ALLIANCE 6595 DMF AMF CAF NHF DDF  
 KBJ MISS COMPRESS 862K  
 DWAJO CHIEF 92E  
 CRESCENT CREEK PRIDE LADY 36Y

BW: 99 LBS 205 DW: 780 LBS. FEB.17/16 WT: 1200 LBS.

EPDS	BW	WW	YW	MILK	TM
	2.4	65	107	22	55



4A SHEIDAGHAN

### 4B SHEIDAGHAN LADY ANN 42C

1843537 VMF 42C FEB. 12, 2015

S A V FINAL ANSWER 0035 AMF CAF NHF DDF  
**S A V THUNDERBIRD 9061**  
 S A V EMBLYNETTE 7411 CAF

SITZ TRAVELER 8180 AMF CAF NHF DDF  
 S A V EMULOUS 8145 CAF  
 S A V BISMARCK 5682 AMF CAF NHF DDF  
 S A V EMBLYNETTE 4408 CAF

NICHOLS EXTRA H6 AMF CAF NHF DDF  
**SOUTH BORDER LADY ANN 832U**  
 SOUTH BORDER LADY ANN 629S

N BAR EMULATION EXT AMF CAF NHF DDF  
 NICHOLS EILEEN MAY F261  
 K G POWER DESIGN DDF  
 HOLLBROOK LADY ANN 38L

BW: 98 LBS 205 DW: 660 LBS. FEB.17/16 WT: 1040 LBS.

EPDS	BW	WW	YW	MILK	TM
	2.5	56	100	19	47



**5A** SHEIDAGHAN **LINDA 34C**  
1843799 VMF 34C FEB. 10, 2015

DOUBLE AA BARDOLENE 47'04  
**DOUBLE AA BARDOLENE 50'08**  
DOUBLE AA ANNIE K 280'96

DOUBLE AA BARDOLENE 8'98  
DOUBLE AA ANNIE K 289'02  
ANGUS ACRES WINSTON 249B  
DOUBLE AA ANNIE K 218'92

SANDY BAR DIRECT 15U  
**BREED CREEK LINDA 124**  
DAY BY DAY LINDA 26N

ARDA DIRECT 381S  
SANDY BAR LADY 178P  
SANDY BAR INNOVATOR 38L  
DAY BY DAY LINDA 16L

BW: 89 LBS 205 DW: 621 LBS. FEB.17/16 WT: 965 LBS.

EPDS	BW	WW	YW	MILK	TM
	3.3	37	64	15	34

**6A** SHEIDAGHAN **ANNIE K 21C**  
1843655 VMF 21C FEB. 8, 2015

CONNEALY ONWARD DMF AMF CAF NHF DDF  
**SITZ UPWARD 307R** DMF AMF CAF NHF DDF  
SITZ HENRIETTA PRIDE 81M

CONNEALY LEAD ON DMF AMF CAF NHF DDF  
ALTUNE OF CONANGA 6104  
SITZ VALUE 7097 AMF CAF NHF DDF  
SITZ HENRIETTA PRIDE 1370

BLACK WHEEL HICK HOP 49R  
**DOUBLE AA ANNIE K 69'09**  
DOUBLE AA ANNIE K 625'05

ROTH REGULATOR 0405 CAF  
FCR LUCILLE 40K  
DOUBLE AA BLACKMAN 292'01  
DOUBLE AA ANNIE K 585'98

BW: 81 LBS 205 DW: 640 LBS. FEB.17/16 WT: 1050 LBS.

EPDS	BW	WW	YW	MILK	TM
	2.2	55	100	25	53

**6B** SHEIDAGHAN **PRIDE 121C**  
1843662 VMF 121C MAR. 1, 2015

DURALTA 307R UPWARD 49Y  
**GRANT LODGE UPWARD 18A**  
DBRL 94T LUCY 5W

SITZ UPWARD 307R DMF AMF CAF NHF DDF  
DURALTA 8005 FANNY 87R  
HF ALASKAN 94T  
DBRL 40R LUCY 24T

SANDY BAR EQUATOR 150S  
**SHEIDAGHAN PRIDE 90W**  
VALLEY BLOSSOM PRIDE 743R

VALLEY BLOSSOM EQUATOR 729M  
SANDY BAR DUCHESS 114E  
SANDY BAR PFRED 41M  
VALLEY BLOSSOM PRIDE 785N

BW: 83 LBS 205 DW: 618 LBS. FEB.17/16 WT: 940 LBS.

EPDS	BW	WW	YW	MILK	TM
	3.2	42	79	25	46

**5B** SHEIDAGHAN **LADY 68C**  
1843685 VMF 68C FEB. 18, 2015

DOUBLE AA BARDOLENE 47'04  
**DOUBLE AA BARDOLENE 50'08**  
DOUBLE AA ANNIE K 280'96

DOUBLE AA BARDOLENE 8'98  
DOUBLE AA ANNIE K 289'02  
ANGUS ACRES WINSTON 249B  
DOUBLE AA ANNIE K 218'92

MERIT 6089  
**SANDY BAR LADY 6X**  
SANDY BAR LADY 17J

DWAJO DUTCH 65P  
MERIT PRIDE 1004  
CRESCENT CREEK BRAVE HEART 35F  
SANDY BAR LADY 26C

BW: 86 LBS 205 DW: 584 LBS. FEB.17/16 WT: 905 LBS.

EPDS	BW	WW	YW	MILK	TM
	2.2	26	49	18	31



# 7A SHEIDAGHAN LADY 41C

1843505 VMF 41C FEB. 12, 2015

S A V FINAL ANSWER 0035 AMF CAF NHF DDF  
**S A V THUNDERBIRD 9061**  
 S A V EMBLYNETTE 7411 CAF

SITZ TRAVELER 8180 AMF CAF NHF DDF  
 S A V EMULOUS 8145 CAF  
 S A V BISMARCK 5682 AMF CAF NHF DDF  
 S A V EMBLYNETTE 4408 CAF

DOUBLE D BARDOLENE 15L  
**SANDY BAR LADY 63R**  
 SANDY BAR LADY 15L

CRESCENT CREEK BARDOLENE 105H  
 CRESCENT CREEK JESTRESS 46B  
 LAMBS INNOVATOR 86J  
 SANDY BAR LADY 51J

BW: 99 LBS 205 DW: 656 LBS. FEB.17/16 WT: 980 LBS.

EPDS	BW	WW	YW	MILK	TM
	3.9	53	92	14	41



7B SA SHEIDAGHAN

# 7B SHEIDAGHAN ANNIE K 44C

1879029 VMF 44C FEB. 12, 2015

MYTTY IN FOCUS AMF CAF NHF DDF  
**CUDLOBE IN FOCUS 55** NHF DDF  
 CUDLOBE ENCHANTRESS 55M

S A F FOCUS OF E R AMF CAF NHF DDF  
 MYTTY COUNTESS 906  
 BON VIEW NEW DESIGN 1407 AMF CAF NHF DDC  
 CUDLOBE ENCHANTRESS 47H

LLB 5175 BANDO 190P  
**SANDY BAR ANNIE K 153T**  
 SANDY BAR ANNIE K 99M

S A F 598 BANDO 5175 AMF CAC DDF  
 LLB LADY ERROLLINE 324L  
 CRESCENT CREEK BRAVE HEART 35F  
 SANDY BAR ANNIE K 32E

BW: 91 LBS 205 DW: 663 LBS. FEB.17/16 WT: 1065 LBS.

EPDS	BW	WW	YW	MILK	TM
	1.7	54	96	22	49

# 8A SHEIDAGHAN IDOL 49C

1843756 VMF 49C FEB. 13, 2015

G D A R TRAVELER 71 AMF NHF CAF DDF OHF  
**SITZ TRAVELER 8180** AMF NHF CAF DDF OHF  
 SITZ EVERELDA ENTENSE 1137

TRAVELER 1148 G D A R  
 G D A R MISS BLACKCAP 567  
 G D A R RAINMAKER 340  
 SITZ EVERELDA ENTENSE 2335

LOOKOUT CANUCK 26U  
**LOOKOUT IDOL 64X**  
 LOOKOUT IDOL 3U

FIGURE 8 ANGUS TOM BOY 509R  
 LOOKOUT COUNTESS 283M  
 MYTTY IN FOCUS AMF CAF NHF DDF  
 FAIRMAC IDOL 48S

BW: 83 LBS 205 DW: 608 LBS. FEB.17/16 WT: 925 LBS.

EPDS	BW	WW	YW	MILK	TM
	0.6	38	68	17	36



8A SA SHEIDAGHAN

# 8B SHEIDAGHAN QUEEN 63C

1843771 VMF 63C FEB. 17, 2015

G D A R TRAVELER 71 AMF NHF CAF DDF OHF  
**SITZ TRAVELER 8180** AMF NHF CAF DDF OHF  
 SITZ EVERELDA ENTENSE 1137

TRAVELER 1148 G D A R  
 G D A R MISS BLACKCAP 567  
 G D A R RAINMAKER 340  
 SITZ EVERELDA ENTENSE 2335

LOOKOUT STORM 66U  
**LOOKOUT QUEEN 92X**  
 DRYLAND QUEEN 453

LOOKOUT PACESETTER 258M  
 RONAN MATILDA 39R  
 RR 7407 RAINMAKER 2154  
 DRYLAND EXT QUEEN -945-

BW: 88 LBS 205 DW: 698 LBS. FEB.17/16 WT: 1020 LBS.

EPDS	BW	WW	YW	MILK	TM
	1.7	44	75	22	44



9A

## 9A SHEIDAGHAN ANNIE K 75C

1843783 VMF 75C FEB. 19, 2015

S A V WORLDWIDE 9088  
**MCC WORLDWIDE 8Z**  
 REMITALL KEEPSAKE 143L

RR SCOTCHMAN 2999  
**SHEIDAGHAN ANNIE K 103X**  
 VALLEY BLOSSOM ANNIE K 720T

WAIMATA E230  
 S A V ABIGALE 5650 CAF  
 SITZ ALLIANCE 6595 DMF AMF CAF NHF DDF  
 REMITALL KEEPSAKE 103J

E X A R SCOTCH CAP 816 AMF CAF NHF DDF  
 ERICA LASSIE OF R R 8464  
 LAMBS INNOVATOR 86J  
 VBR ANNIE K 201H

BW: 89 LBS 205 DW: 614 LBS. FEB.17/16 WT: 975 LBS.

EPDS	BW	WW	YW	MILK	TM
	2.7	34	68	22	39



9B

## 9B SHEIDAGHAN BETSY 144C

1843748 VMF 144C MAR. 8, 2015

S A V WORLDWIDE 9088  
**MCC WORLDWIDE 8Z**  
 REMITALL KEEPSAKE 143L

OAK LANE EPIC ENCORE 358  
**LOOKOUT BETSY 35X**  
 LOOKOUT BETSY 8R

WAIMATA E230  
 S A V ABIGALE 5650 CAF  
 SITZ ALLIANCE 6595 DMF AMF CAF NHF DDF  
 REMITALL KEEPSAKE 103J

HORSE BUTTE 1126 OF 3128  
 OAK LANE EILEEN 441  
 LOOKOUT PACESETTER 258M  
 LOOKOUT BETSY 344N

BW: 91 LBS 205 DW: 617 LBS. FEB.17/16 WT: 895 LBS.

EPDS	BW	WW	YW	MILK	TM
	1.4	28	52	24	38



10B

## 10A SHEIDAGHAN BLACKLASS 5C

1843899 VMF 5C FEB. 3, 2015

SITZ TRAVELER 8180 AMF CAF NHF DDF  
**S A V FINAL ANSWER 0035** AMF CAF NHF DDF  
 S A V EMULOUS 8145 CAF

S A F 598 BANDO 5175 AMF CAC DDF  
**SHEIDAGHAN BLACKLASS 96Z** CAF  
 SANDY BAR BLACKLASS 134R

G D A R TRAVELER 71 AMF CAF NHF DDF  
 SITZ EVERELDA ENTENSE 1137  
 BON VIEW BANDO 598 AMF CAC DDF  
 S A V SKY EMULOUS 2124

BON VIEW BANDO 598 AMF CAC DDF  
 S A F ROYAL LASS 1002  
 DOUBLE D BARDOLENE 15L  
 SANDY BAR BLACKLASS 76M

BW: 80 LBS 205 DW: 595 LBS. FEB.17/16 WT: 930 LBS.

EPDS	BW	WW	YW	MILK	TM
	0.9	51	91	20	46

## 10B SHEIDAGHAN DELIA 113C

1843788 VMF 113C FEB. 27, 2015

HF ALASKAN 94T  
**DBRL ALASKAN 57X**  
 DBRL 03M PATRICIA 21U

SANDY BAR PFRED 41M  
**SANDY BAR DELIA 171X**  
 SANDY BAR DELIA 27U

HF KODIAK 5R AMF CAF NHF MAF DDF  
 HF ECHO 112R  
 DMM AMBUSH 03M  
 DBRL RT PATRICIA 9R

SUMMITCREST HI FLYER 3B18 AMF CAF NHF DDF  
 SANDY BAR MISS QUALITY 1K  
 LLB FULLBACK 141M  
 RON'S DELIA 22H

BW: 83 LBS 205 DW: 632 LBS. FEB.17/16 WT: 940 LBS.

EPDS	BW	WW	YW	MILK	TM
	2.1	40	68	16	36

# Notes

NOTES

---

---

---

---

---

---

---

---

---

---

---

---

---

---

---

---

---

---

---

---

---

---

---

---

# Thank you

MANY THANKS TO ROSS,  
ROCKY, MONTY AND  
NEIL. A VERY SPECIAL  
THANKS TO LAVERNE  
"BUSHY" AND WENDY  
FOR THE PERSONAL  
ATTENTION  
AND COUNTLESS  
HOURS YOU  
SPEND MAKING  
THE PLACE WORK.  
WE COULDN'T DO  
IT WITHOUT YOU.



Rocky



Ross



Monty



Neil



Wendy &  
Bushy



THANK YOU

# TERMS & CONDITIONS

## Terms:

The terms of the sale are cash or cheque, payable at par at the sale location. The right of property shall not pass until after settlement has been made; no invoicing on buyers in attendance unless previous arrangements have been made. Each animal sells to the highest bidder and in cases of disputes, the auctioneer's decision will be final. Current exchange rates will be announced sale day. All monies are in Canadian funds.

## Certificate of Registration:

Each animal will carry papers issued by the Canadian Angus Association. A certificate of registry duly transferred will be furnished to the buyer for each animal after payment has been made.

## Health:

All animals in the sale have met all necessary health requirements.

## Guarantee:

Each animal becomes the purchaser's risk immediately after the animal is sold. All animals in this sale will be sold under the terms and guarantees set forth by the Canadian Angus Association with regard to health, freedom from defects and from both reproductive and specific genetic unsoundness.

## Deliveries:

Every assistance will be given in getting your purchases home. Each animal becomes the risk of the purchaser as soon as sold. \$100 discount – if you haul your own home on Sale Day.

## Liabilities:

All persons attend the sale at their own risk. The seller, facility owner and sale manager assume no liability, legal or otherwise, for any accidents that occur. It is understood that T Bar C Cattle Co. Ltd. is acting only as a medium between buyer and seller and is not responsible for any obligations to collect or enforce collection of any monies between parties and any legal action that may, in extreme cases, be taken must be between buyer and seller. T Bar C Cattle Co. Ltd. assumes no responsibility of any credit extended by the seller to the buyer. The buyer must look to the seller for fulfillment of all guarantees and representations made hereunder.

## Phone, Mail & Wire Bids:

Bidders unable to attend the sale may phone, wire or mail their bids and instructions to the sale manager, auctioneer or special representatives. Bids must be received in sufficient time prior to the sale.

## Insurance:

Ownership risk to purchaser commences when the Auctioneer's hammer falls. A representative from Blythman Agencies will be available to look after your insurance needs on Sale Day and we strongly request that you participate in one form or another to hopefully avoid any unforeseeable mishaps.

## Errors:

All announcements at sale time, written or oral, supersede any written material in the catalogue.

RETURN UNDELIVERABLE  
CANADIAN ADDRESSES TO:

T BAR C CATTLE CO. LTD.  
4-3342 MILLAR AVENUE  
SASKATOON, SK S7K 7G9

R  
P  
G  
/  
P  
R  
G

CANADA		POSTES
POST		CANADA
	Postage paid Addressed Admail	Port payé Médiaposte avec adresse
	3140180	

RETURN POSTAGE GUARANTEED  
PORT DE RETOUR GARANTI



CREATED BY TODAY'S PUBLISHING