

TENTH ANNUAL BLUE COLLAR BULL SALE



Saturday, April 9, 2016
Heartland Livestock
Yorkton, SK 1:00 PM

WELCOME

Castlerock Marketing is pleased to be working with the Blue Collar Sale group. These four outfits together, work hard to bring a strong lineup of bulls to town each and every year. Genetically the variety offers you the buyer flexibility to weave together the bloodlines you are in search of to further your program. These bulls are big, powerful, stout, meat machines with haircoats that the buyers love. To make things better, the female counterparts to these bulls will grow in to productive females carrying all the traits that make Angus cows the benchmark for the industry. The bulls will be available for viewing at Heartland Friday afternoon; be sure to stop in and enjoy some pre sale hospitality while viewing the bulls.

If you have any questions regarding the offering feel welcome to contact any of the consignors, Heartland staff or myself and we would be more than happy to answer your questions regarding the offering. Sight unseen purchases are guaranteed to meet your satisfaction.

See you sale day!

Shane Castle
Castlerock Marketing

SALE MANAGEMENT CASTLEROCK MARKETING

Shane Castle
Cell: 306.741.7485
Email: castlerock.mktg@sasktel.net
Dean McAvoy 306-784-2241



J Square S Angus



Northern View Angus



Parkwood Farm



Swan Hills Ranch

Watch and Bid Online

Can't make it to the sale?
Internet Bidding Available.

To view this sale visit www.dlms.ca, Fill out the registration form located under registration and sign-up for your free user account and select a username and password.

BIDDERS - To be approved as a bidder, Log in to dlms.ca and click BUYER APPROVAL tab, select the sale you are interested in bidding at and click sign up.

For more information
Call DLMS Reps:
Whitney Bosovich 780.991.3025
Mark Shologan 780.699.5082

DLMS
www.dlms.ca

BLUE COLLAR BULL SALE

Saturday, April 9, 2016

Heartland Livestock, Yorkton, SK • 1:00 P.M.

SALE DAY PHONES

Shane: 306-741-7485

Jordan: 306-728-1299

Troy: 306-728-8911

Scott B: 306-621-3638

Scott T: 204-734-0210

Heartland: 306-783-9437 • 306-786-3634

CONSIGNORS

J SQUARE S ANGUS

Box 2371, Melville, SK S0A 2P0

Jordan & Jacklyn Sies: 306-728-1299

Stuart & Kathy Sies

306-728-3279 • 306-728-1618

sieser94@hotmail.com

NORTHERN VIEW ANGUS

Box 211, Neudorf, SK S0A 2T0

Alvin & Marlene Frick: 306-728-3295

Troy, Amy, Bret, Alexis & Talon Frick

306-728-3515 • Cell 306-728-8911

northernviewangus@imagewireless.ca

PARKWOOD FARM

Box 48, RR 1, Yorkton, SK S3N 2V3

Jack & Joyce 306-782-7112

Scott, Mandy, Katie, Landon & Macy Burkell

306-783-7986 • Cell 306-621-3638

s.a.burkell@sasktel.net

SWAN HILL RANCH

Box 2471, Swan River, MB R0L 1Z0

Scott, Cindy, Martina, Robyn & Parker Tibble

Cell 204-734-0210

Ranch 204-539-2570

shbranch@xplornet.com

OFFERING:
69 BLACK ANGUS BULLS
3 ANGUS INFLUENCE BULLS
13 BLACK ANGUS FEMALES
39 ANGUS INFLUENCE FEMALES

View the bulls Friday, April 8

from 6:30-8:00 PM

Saturday, April 9

Lunch at 11:00 AM

SALE TIME 1:00 PM

Auctioneer:

Clayton Hawryluk, Heartland.....306-783-9437

.....306-621-3824

Blockman:

Shane Castle.....306-741-7485

Ringmen:

Scott Tibble.....204-734-0210

Harvey Exner.....306-621-5486

Ryan Keown204-247-0435

Hotel Accommodations:

Days Inn, Yorkton.....306-783-3297

Livestock Insurance:

Farrell Agencies.....306-783-4477

Sale Consultant:

Brian Rathgeber.....306-621-5421

DLMS:

Whitney Bosovich.....780-991-3025

Green Tag Program:

Canadian Angus Association.....403-571-3580

View the Catalogue Online at:

www.buyagro.com

www.castlerockmarketing.com

www.jssangus.com

View the Sale Bull Videos Online at: www.cattlevids.ca

Find us on Facebook



We would like to thank the following sponsors...

Yorkton New Holland - \$600 sponsorship to the sale day meal.

Blair's Crop and Livestock Solutions - \$150 Sponsorship to the sale day meal.

CPS Melville - \$50 to the sale day meal.

WELCOME TO THE BLUE COLLAR BULL SALE

Welcome to the 10th Annual Blue Collar Bull Sale. It is amazing how fast 10 years can fly by. We all tend to believe that not much has changed until you sit back and think about it or look in the mirror.

In 2006:

The high selling bull at the 1st Annual sale was \$3900.

We were 3 years in to the BSE disaster. Farmers were trying to find ways to survive.

The Iphone had not yet been on the market.

Social media was in its infancy.

Stephen Harper became the Prime Minister of Canada.

The last time the Edmonton Oilers were in the Stanley Cup Final.

And it was the last time Burkell's took a family photo.

Since 2006:

Bull prices have exponentially increased.

We have persevered and survived BSE to see record cattle prices.

The Iphone/SMART phone allows us to communicate, GOOGLE, search, ...

Facebook, Twitter, Instagram, Snapchat... are a staple in most peoples daily lives.

Justin Trudeau is now the Prime Minister of Canada.

The Edmonton Oilers have not made the playoff in 10 years.

And Burkells have not aged in 10 years.

The Blue Collar group works hard to stay on pace with the demands of the industry, our customers and the market place. In our pursuit to provide cattle that are "Affordable, Honest, Hardworking cattle that'll get'er done", each of us spends a great deal of time selecting AI Sires and Bulls to be able to provide the best seedstock we can for all our customers. As a result, the cattle we bring to town are of higher quality, offer unique genetics, have more manageable birth weights and have better performance than the ones we brought to town last year. It is our belief that cows are the foundation of any livestock operation. The bulls we present to you are from carefully selected cows based on their temperament, their feet, udders and production. Cows that don't produce do not get to many opportunities to prove themselves. Our cows are our factory and without a highly efficient and productive factory you will not be productive. Quality is more important than quantity.

The cattle we present to you are fed to grow and last. Our cattle are athletic, fit and ready to go out and work for you. We want your Blue Collar investment to be one that is sound and financially rewarding for you.

Throughout the catalogue you will find an entire host of information to aid you in your bull or heifer selection. There are footnotes, pictures, pedigrees, weights, sire and dam information... Please feel free to contact any one of us for more information or stop by our farms to view the bulls prior to the sale.

The Blue Collar Bull Sale Group would like to thank the following for their contribution to the success of our sale:

- Everyone who attended last year's sale, our bidders and buyers.
- All our friends and family who helped us before, during and after the sale.
- All our sponsors-We do business with all of them and recommend you give them a try, too.
- To Castlerock Marketing, Scott Tibble, Ryan Keown, the Heartland Staff's and all our friends for their work on our sale.

Our sale staff this year consists of Castlerock Marketing, Scott Tibble, Ryan Keown, Ryan Brian Rathegeber and the Heartland team. We believe that we have a solid and supportive team who can work to make sure that you are well taken care of and your livestock needs are met. Please contact any member of the Blue Collar Group or the sales staff with any questions to help you select the animals to meet your needs.

This year we have added DLMS for your convenience. If you cannot make the sale please bid and view online at www.dlms.ca. Just a reminder to pre-register prior to the sale.

For the second year in a row we are going to start our sale with a groups of 3 or 5 commercial heifers. These heifers come from bulls that have been purchased from the Bull Collar consignors. Look to increase your female factory with these quality genetics.

We would also like to make you aware that in Farrell Agencies will be on hand sale day to assist you with the insurance of your purchases. As breeders we will support you, the buyer, in every way we can to ensure our cattle work. However, there are unforeseen events which occur, like illness, injury, or death, which the buyer and seller cannot control or guarantee. For situations like this there is insurance. We strongly recommend you insure all your livestock purchases but want you to insure any cattle which will be going home to our respective farms for a while. Please refer to back of catalogue for all sale conditions.

There are more and more Blue Collar Cattle out there working for folks. We take pride in the fact that we have an increase number of repeat customers. We truly enjoy the connections and socialization which is involved with our customers and the cattle business. We would like to invite you to give us a call or drop in for a visit any time. We would like to welcome you to the 10th Annual Blue Collar Bull Sale. Cattle will be arriving at Heartland Thursday and may be viewed anytime until sale time. Consider this your invitation to come to Heartland in Yorkton on Friday, April 8th from 6:30-8:00 PM for a viewing of the cattle and fellowship and to the sale on Saturday, April 9th at 11:00 AM for lunch and to view the cattle and for the sale at 1:00 PM.

See at the Sale
Blue Collar Sale Group



Universal Haybine Reverser



Kits contain 4000psi hoses, fittings, toggle switch, cable, connectors and install manual.

A flip of a switch from your tractor seat saves time, money and ensures operator safety. Kit is configured to reverse only the motor, without disturbing hydraulic filtration. 37 gpm flow. Available for most makes and models of haybines.

QVB Enterprises Inc. 306-745-3801

Box 1238
Esterhazy, SK S0A 0X0

qvb@xplornet.com
www.qvbenterprises.com

G & L Concessions

Serving
Melville & Area

306-728-4128



HARDROCK CORRAL CLEANING

DERRYL W. ZENKEWICH
Box 24
Ituna, SK S0A 1N0

Tel: 306-795-2234
Cell: 306-795-7607
Fax: 306-795-3453

WIRELESS COWCAM SYSTEMS



Save more calves,
make more money
and get more sleep!



Mini PTZ Wireless
Cowcam System

View From Your
Smartphone!



324 X Zoom,
Wireless PTZ Camera

Trusted Quality, Trusted Support Trusted Service!

545 Assiniboine Ave., Brandon, MB R7A 0G3 1-866-289-8164

www.allenleigh.ca f info@allenleigh.ca

Animal Health Centre of Melville

Dr. Deana Schenher
DVM

1175 Queen St.
P.O. Box 3340

Melville, SK S0A 2P0

Tel.: 306.728.2633

www.melvillevet.com Fax 306.728-2643

SPONSORS...

Friendly Acres Seed Farm

Robert & Kevin Elmy

306-744-2779 or 744-2332

www.friendlyacres.sk.ca

Twitter @KevinElmy



Your forage, corn, soybean, and cover crop seed provider

TH2, Stealth, 10-5, Response Wet Brand, and Rugged Salt tolerant alfalfa; non bloat legumes, all grasses, millets, sorghum sudan and native species

Tillage Radish, Turnip, radish, sugar beets, kale, hybrid brassica, forage rape

Custom blending. We do blends to fit your needs, seeded at the right rate.

Corn

We trialed what we sell so we know what the cows like. They don't like all corn varieties. We have RR, conventional, & organic varieties available.

Canamaize – 440 (conventional)

Hyland – BAXXOS, HL SR22, HL SR35

Thunder Seeds – TH 2146, TH 8781, TH 3382

Northern View Angus

We have really worked on not pushing our bulls. Feeding them a ration of 1.5% of their body weight in grain/supplement and the balance of their ration with millet hay. We have worked really hard to monitor the feed intake of our bulls to ensure no overfeeding and to promote a sound growing bull that will work for you for the long term. They have free choice mega lix tubs to promote scrotal circumference, semen quality and structural soundness. The bulls are raised in large pens and/or pasture areas to allow for ample room to wander, rumble and explore.

I have catalogued our bulls in sire groups and in numerical order of when they were born within that group. For example, in the first sire group of Vision Unanimous the oldest bull is first and the youngest bull is last of that sire group. We have entered larger sire groups this year in hopes that you will have a better representation of what each sire is able to do.

We are retaining a 1/3 semen interest in all our bulls unless otherwise stated. This does not impact you owning the bull, the rights to walk the bull or the salvage value on the bull. All it means that if at some point we would like to draw semen for in herd use we would arrange at your convenience and our expense to do so.

NORTHERN VIEW ANGUS

Blue Collar Bull Sale, Yorkton, SK

NORTHERN VIEW...



Vision **Unanimous**

We have used Unanimous in our herd over the last two years. His unique outcross pedigree, phenotype, excellent scrotal potential and powerful weight numbers at weaning and yearling have attracted us to him. His bulls and heifers are equally impressive. They are deep bodied, long bodied and, as all reports are on Unanimous himself, have great feet and solid leg structure. There has not really been a throw away calf from him for us. Our intent is to use him for the third consecutive year as an AI sire. We sold a Unanimous daughter this fall to Section 7 Ranch at Rocanville in the Power & Perfection Sale at Agribition this past fall.

Northern View **Grand Slam 70C**

Lot 1 1852537 URZ 70C 01/01/2015 Male

A smooth quiet and stylish Unanimous son. He has a lower birth weight and solid growth numbers with an 846lb adj. weaning weight and a 1243lb adj. yearling weight. Grand Slam 70C should add some style, udder quality and structural soundness to his calves. He has a great disposition. 8Y is a very nicely uddered attractive Blackman daughter. Sadly she was open this fall and had to go to town. We sold a maternal brother to 70C to J and S Angus at Kenaston last year.

EPD	BW	WW	YW	Milk	TM
2.1	56	97	19	47	

ACC	BW	Adj. 205	Adj. 365
80	846	1243	



Crew at Agribition

VISIONTOPLINE ROYAL STOCKMAN DDF
VISION UNANIMOUS 1418 1701532 DDF NHF CAF AMF
 VISION EDELLA 665 CAF DDF

TGA BLACKMAN 8311U
NORTHERN VIEW PRIDE 8Y 1623301
 PRIDE OF BRYNTERION 9P

GAMBLES ROYAL FLUSH AMF
 LAGRAND PRIDE 7140
 BOYD ON TARGET 1083 AMF NHF CAC DDF OHF
 VISION EDELLA 337
 GEIS BLACKMAN 224'05
 TGA MS DELEGATE 3145N
 BLACKTOF T BANDOLIER 5M
 KENOSEE PARK PRIDE 31G

Northern View **Grand Slam 77C**

Lot 2 1852034 FTA 77C 01/01/2015 Male

Here is a bull that is deep, long and thick. He has loads of hair, good scrotal development and overall impressive. He is out of a solid Elixir 70M Belle cow. 79U has produced solid calves each year. This bull is in the top 3% of the breed for weaning and top 4% of the breed for yearling weights. I grow to appreciate this bull more and more each day. If you are looking to put some depth and size in your herd and not compromise structure and maternal potential in your heifer calves then this bull may be the right one for you.

EPD	BW	WW	YW	Milk	TM
3.7	61	110	17	48	

ACC	BW	Adj. 205	Adj. 365
85	862	1418	

VISIONTOPLINE ROYAL STOCKMAN DDF
VISION UNANIMOUS 1418 1701532 DDF NHF CAF AMF
 VISION EDELLA 665 CAF DDF

NORTHERN VIEW FLYING ELIXIR 70M
NORTHERN VIEW BELLE 79U 1433822
 WWF AMBUSH BELLE 166P

GAMBLES ROYAL FLUSH AMF
 LAGRAND PRIDE 7140
 BOYD ON TARGET 1083 AMF NHF CAC DDF OHF
 VISION EDELLA 337
 ANKONIAN ELIXIR 100 CAF
 CRESCENT CREEK RUTH 6F
 BAD LANDS AMBUSH 45M
 WWF ULTRAVOX BELLE 28M



Crew hard at work



April 9, 2016

NORTHERN VIEW ANGUS

NORTHERN VIEW...

Lot 3



This bull has been a personal favorite of mine from birth. He is as smooth as they come. I appreciate his structure from his head back. The design of his head, shoulders and hip make him attractive and moderate to easy calving bull. I believe a big reason for this is the combination of the Final Answer X Lucy genetics on the dam's side coupled with Unanimous. Lucy 79X has been a super cow for us. Up to 80C she has had 3 heifer calves. We sold her first heifer in the Touch of Class and retained her last two females in our herd. Both these females have calved already this year and they are awesome mothers, milkers and producers. 80C's grandmother 85U has been a perennial producing power house.

Grand Slam 80C is in the top 7% of the breed for his weaning and yearling weights. I would consider this bull very balanced. Whether you are a numbers person, an eye appeal person, a performance person, birth weight person or whatever, this bull should appeal to you. This bull is as quiet as they come and is halter broke.

This bull should work on heifers.

EPD	BW	WW	YW	Milk	TM
1.8	58	103	21	50	

ACC	BW	Adj. 205	Adj. 365
85	808	1347	

Northern View **Grand Slam 80C**

Lot 3 1852032 FTA 80C 01/01/2015 Male

VISIONTOPLINE ROYAL STOCKMAN DDF
VISION UNANIMOUS 1418 1701532 DDF NHF CAF AMF
 VISION EDELLA 665 CAF DDF
 S A V FINAL ANSWER 0035 AMF NHF CAF DDF OHF
NORTHERN VIEW LUCY 79X 1552544
 NORTHERN VIEW LUCY 85U

GAMBLES ROYAL FLUSH AMF
 LAGRAND PRIDE 7140
 BOYD ON TARGET 1083 AMF NHF CAC DDF OHF
 VISION EDELLA 337
 SITZ TRAVELER 8180 AMF NHF CAF DDF OHF
 S A V EMULOUS 8145 CAF
 NORTHERN VIEW QUANTUM 86P
 BELL BLACK LUCY 5G



CWA Pic

Lot 4



Northern View **Grand Slam 90C**

Lot 4 1852048 FTA 90C 10/01/2015 Male

VISIONTOPLINE ROYAL STOCKMAN DDF
VISION UNANIMOUS 1418 1701532 DDF NHF CAF AMF
 VISION EDELLA 665 CAF DDF
 NORTHERN VIEW QUANTUM 86P
NORTHERN VIEW PRINCESS 73U 1433816
 WILBAR PRINCESS 345K

GAMBLES ROYAL FLUSH AMF
 LAGRAND PRIDE 7140
 BOYD ON TARGET 1083 AMF NHF CAC DDF OHF
 VISION EDELLA 337
 GDAR QUANTUM 963
 CRESCENT CREEK BLACKBIRD 21J
 WILBAR FORTUNE 9F
 WILBAR PRINCESS 935C

EPD	BW	WW	YW	Milk	TM
3.3	50	98	17	42	

ACC	BW	Adj. 205	Adj. 365
90	820	1444	

If you want a bull from a breed leading sire and an awesome foundational cow then here is your opportunity. He is as deep sided and as long a bull you will find this spring. When I feed the bulls I take a walk in behind the row of them as they are eating and check out the hip and width of them, 90C always grabs my attention. He is a big hipped, big topped and smooth. As you all know a great cow has great calves. Princess 73U has had numerous top end calves. We have females in our herd from her. They are doing a great job. There are numerous reasons to select Grand Slam 90C but if you select bulls for maternal strengths then this is the bull for you. This bull is very quiet and easy going. He is halter broke.

Northern View **Edge 72C**

Lot 5 1852038 FTA 72C 01/01/2015 Male

HOOVER DAM AMF NHF CAF DDF OHF
SANDPOINT J EDGAR HOOVER 1764467 AMF CAF DDF NHF
 SANDPOINT PROUD FORMERA 0128
 DURLOWE MAGIC 62K
NORTHERN VIEW MISSIE 84M 1093116
 CALLAMERE MISSIE 23J

SYDGEN C C & 7 AMF NHF CAF DDF OHF
 ERICA OF ELLSTON C124
 S A V BISMARCK 5682 AMF NHF CAF DDF OHF
 SANDPOINT PROUD FORMERA 8837 AMF
 EBON HILL EQUALIZER 34'94
 DURLOWE ESSO EILEEN 537E
 YV GOLIATH 56Z
 CALLAMERE MISSIE 30E

EPD	BW	WW	YW	Milk	TM	ACC	BW	Adj. 205	Adj. 365
-0.1	49	77	18	43		70	811	1379	

We selected J Edgar Hoover for his eye appeal and solid numbers. His EPDs are all in the top 3% of the Angus breed. His calves are to come out easy and then grow. In our experience this is indeed the case. We have two heifers and 72C. There are only 20 other J Edgar Hoover calves registered in Canada. Suffice it to say we are extremely pleased with his calves. Both his heifers are in our replacement pen. Edge 72C is from the oldest cow on the farm. 84M, a 14 year old gem, has had nearly all bull calves. All her bull calves have been sold for breeders. We have retained a daughter, 81X, she is a gorgeous cow that has produced well. A son has done well at Skye-Brook Angus and daughter has sold to LLB Angus. At 14 years of age 84M has perfect feet and sound udder. Edge 72C is one of the deepest big barrelled bulls on the farm. He has calving ease in his structure and design and in his 70lb birth weight and in his -0.1 birth EPD. Combine his calving ease and performance and you have a desirable yearling. If you are looking for a bull for heifers but one that should still put pounds and volume in his calves at weaning and yearling and produce heifers to use as replacements 72C may have the EDGE.

Recommended for Heifers.



Sandpoint **J Edgar Hoover**



Connealy **Consensus 7229**

Consensus is a bull which we choose for some unique genetics for us and want some genetic to take our program in a bit of a different direction. He is a bull that offers performance, style and highly functional cattle. We have seen both bulls and heifers in production and they really appealed to us. We believe you will like them too.

Northern View **Compass 74C**

Lot 6 1852037 FTA 74C 01/01/2015 Male

CONNEALY CONSENSUS DDF
CONNEALY CONSENSUS 7229 1593730 CAF DDF AMF NHF OHF
 BLUE LILLY OF CONANGA 16 CAF
 HYLINE RIGHT WAY 781 AMF NHF CAF DDF OHF
NORTHERN VIEW RUTH 84S 1319962
 CRESCENT CREEK RUTH 6F

KMK ALLIANCE 6595 187 AMF NHF CAF DDF OHF
 BLINDA OF CONANGA 004
 WOODHILL ADMIRAL 77K AMF NHF CAF DDF OHF
 BLUE CASH OF CONANGA 6020 CAF
 HYLINE RIGHT TIME 338 AMF NHF CAF DDF OHF
 HYLINE ELLEN 86
 WHITESTONE FLY TRAVELER 3006 AMF NHF CAF DDF OHF
 CRESCENT CREEK RUTH 21A

EPD	BW	WW	YW	Milk	TM	ACC	BW	Adj. 205	Adj. 365
2.6	52	96	23	49		85	820	1408	

If you want a bull from a breed leading sire and an awesome foundational cow then here is your opportunity. He is as deep sided and as long a bull you will find this spring. When I feed the bulls I take a walk in behind the row of them as they are eating and check out the hip and width of them, 74C always catches my eye. Compass 74C is a moderate birth weight bull with an 820lb weaning weight then gaining 3.68lbs per day to a 1408lb yearling weight. As you all know a great cow has great calves. Ruth 84S is a great cow, she has a fantastic udder, a deep angular body and perfect feet. We are excited that as of this spring she has achieved the Premier/Elite Dam status. She has had 8 calves. Two females are producing for us, 1 female at J Square S, 1 female at Glen Gabel Angus, 3 bulls have sold through the Blue Collar-last year's bull sold to Larry Lowe at Balcarres- and now 74C. She has her bull calves have averaged 831 lbs and her heifer calves averaged 780 lbs. at weaning. They are pretty nice numbers. There are numerous reasons to select Compass 74C, maternal strengths, power, depth and structure. Look to keep very good females from this bull. Put your breeding program in the right direction with 74C.



NORTHERN VIEW...

Lot 7



Lot 8



Lot 9



Northern View Compass 78C

Lot 7 1852030 FTA 78C 01/01/2015 Male

CONNEALY CONSENSUS ^{DDF}
CONNEALY CONSENSUS 7229 1593730 ^{CAF DDF AMF NHF OHF}
 BLUE LILLY OF CONANGA 16 ^{CAF}

BELL NET RETURN 3U
NORTHERN VIEW ATALANTA 88X 1552553
 NORTHERN VIEW ATALANTA 78T

KMK ALLIANCE 6595 187 ^{AMF NHF CAF DDF OHF}
 BLINDA OF CONANGA 004
 WOODHILL ADMIRAL 77K ^{AMF NHF CAF DDF OHF}
 BLUE CASH OF CONANGA 6020 ^{CAF}
 S A V NET WORTH 4200 ^{AMF NHF CAF DDF}
 BELL MS PRIDE 16L
 NORTHERN VIEW FLYING ELIXIR70M
 KBJ ATALANTA 583K

EPD	BW	WW	YW	Milk	TM	ACC	BW	Adj. 205	Adj. 365
3.6	62	106	23	54		90	915	1460	

Power, style and functional are words that quickly come to mind when thinking of this Consensus Son. His dam, 88X has been solid in her first three calves. Compass 78C has a moderate birth weight and has gained 3.40 lbs per day to yearling weight. You will notice his weaning and yearling weights are quite impressive. If you are in need of a power performance bull be sure to find this bull. He style and structure will be very appealing to you too. This bull is halter broke. A maternal sister is owned with Swan Hills Ranch. Venture Farms bought a maternal Imprint brother at last year's Blue Collar. 78C will help get your bearings straight for performance in his calves.

Northern View Compass 86C

Lot 8 1852044 FTA 86C 04/01/2015 Male

CONNEALY CONSENSUS ^{DDF}
CONNEALY CONSENSUS 7229 1593730 ^{CAF DDF AMF NHF OHF}
 BLUE LILLY OF CONANGA 16 ^{CAF}

CUDLOBE YELLOWSTONE 80M
SOO LINE DUCHESS 7266 1376757
 SANDY BAR DUCHESS 96J

KMK ALLIANCE 6595 187 ^{AMF NHF CAF DDF OHF}
 BLINDA OF CONANGA 004
 WOODHILL ADMIRAL 77K ^{AMF NHF CAF DDF OHF}
 BLUE CASH OF CONANGA 6020 ^{CAF}
 VERMILION YELLOWSTONE ^{AMF NHF CAF DDF}
 STEVENSON ENCHANTRESS 425F
 SANDY BAR BARDOLIER 82C
 SANDY BAR DUCHESS 114E

EPD	BW	WW	YW	Milk	TM	ACC	BW	Adj. 205	Adj. 365
4.0	53	92	17	44		85	812	1413	

Well if you want to have a bull out of a very good cow that has produced extremely well for all 7 of her calves then here is the bull. Duchess 266T produces both bulls and heifers with everything you want in an Angus animal. This bull gets better and better each time I look at him. I have analyzed him in the corral, at the feed bunk and when he got his hair cut. I have checked out his feet, scrotal development, top...everything from head to toe-his is as good a bull as we have raised. His moderate birth weight and solid yearling and weaning weights should produce some high performing calves. He has gained 3.76lbs per day and achieving the highest ranking in his contemporary group at our place. Compass 86C was in our show string at Agribition and was selected as the top 2 in class at the Semex President's Choice bull show at Canadian Western Agribition. We believe that this is a bull that will can set your breeding program on the right path.

Northern View Compass 91C

Lot 9 1852049 FTA 91C 10/01/2015 Male

CONNEALY CONSENSUS ^{DDF}
CONNEALY CONSENSUS 7229 1593730 ^{CAF DDF AMF NHF OHF}
 BLUE LILLY OF CONANGA 16 ^{CAF}

NORTHERN VIEW FLYING ELIXIR70M
NORTHERN VIEW LUCY 83R 1259826
 NORTHERN VIEW LUCY 72J

KMK ALLIANCE 6595 187 ^{AMF NHF CAF DDF OHF}
 BLINDA OF CONANGA 004
 WOODHILL ADMIRAL 77K ^{AMF NHF CAF DDF OHF}
 BLUE CASH OF CONANGA 6020 ^{CAF}
 ANKONIAN ELIXIR 100 ^{CAF}
 CRESCENT CREEK RUTH 6F
 BELL STOCKADE 7G
 BELL BLACK LUCY 5G

EPD	BW	WW	YW	Milk	TM	ACC	BW	Adj. 205	Adj. 365
2.4	48	98	19	43		80	743	1191	

Compass 91C is a neat bull out of a powerful Elixir 70M daughter 83R. She has been a perennial producer for us. All 4 of her females have been added to our herd. Her bull calves have gone through the Blue Collar. Last year's Upward son was our high seller to Corvet Angus-Corey Jones. This bull is smooth appealing bull with balanced numbers and weights. He should ad style, length and enhance maternal qualities in his progeny.

Tank's Country Meats



Custom Meat Processing

Custom Slaughtering * Cutting & Wrapping
 Domestic * Sausage Making * Curing * Smoking

Hours: Mon-Fri: 9 a.m. to 12 noon, 1 p.m. - 6 p.m.
 Closed Sat, Sun & all holidays

Glen Tank - Box 2595, Melville, Sask. S0A 2P0
 Phone: 728-3560 Fax: 728-5189



B P F Special Focus 504

For the last number of years we have been using Connealy Thunder for all our calving ease needs. We wanted to find another outcross calving ease bull. In selecting a calving ease sire we did not want to compromise performance. In Special Focus we get the weights plus strong maternal characteristics, excellent scrotal development and tonnes of eye appeal. The bulls and heifers all look great. I went on you tube and watched video of this bull and that sealed the deal for us using him for a calving ease bull. I just bought more semen on him for the 2016 breeding season.

Northern View Bull's Eye 76C

Lot 10 1852035 FTA 76C 01/01/2015 Male

MYTTY IN FOCUS AMF NHF CAF DDF OHF
B P F SPECIAL FOCUS 504 1644193 AMF CAF NHF DMF DDF OHF
 B P F BLACK CASH 341

NORTHERN VIEW FLYING ELIXIR 70M
NORTHERN VIEW TIBBIE 83T 1377314
 CRESCENT CREEK BEAUTY 118E

S A F FOCUS OF E R AMF NHF CAF DDF OHF
 MYTTY COUNTESS 906
 J R SOMETHING SPECIAL AMF NHF CAC DDF OHF
 B P F BLACK CASH 944
 ANKONIAN ELIXIR 100 CAF
 CRESCENT CREEK RUTH 6F
 BOTANY ANGUS MAX 5A
 CRESCENT CREEK BEAUTY 59Z

EPD	BW	WW	YW	Milk	TM	ACC	BW	Adj. 205	Adj. 365
1.3	38	76	21	40		84	719	1202	

76C is from a good old girl in Beauty 83T. She is a productive, deep and sound Elixir 70M daughter. Beauty 83T has had 4 bulls go through the Blue Collar with her Effective son selling to Bell Angus at Pense, Sk in last year's sale. I like this bull and his overall development, style and growth. This bull has an 84lb birth weight and +1.3 birth epd so I would recommend you try him on larger heifers and cows just to make sure he is the calving ease you would desire down the road.



Northern View Bull's Eye 82C

Lot 11 1852039 FTA 82C 02/01/2015 Male

MYTTY IN FOCUS AMF NHF CAF DDF OHF
B P F SPECIAL FOCUS 504 1644193 AMF CAF NHF DMF DDF OHF
 B P F BLACK CASH 341

CONNEALY THUNDER AMF NHF CAF DDF OHF
NORTHERN VIEW RUTH 88A 1744132
 NORTHERN VIEW RUTH 84S

S A F FOCUS OF E R AMF NHF CAF DDF OHF
 MYTTY COUNTESS 906
 J R SOMETHING SPECIAL AMF NHF CAC DDF OHF
 B P F BLACK CASH 944
 BALDRIDGE KABOOM K243 KCF CAF
 PARKA OF CONANGA 241 CAC AMF NHF
 HYLINE RIGHT WAY 781 AMF NHF CAF DDF OHF
 CRESCENT CREEK RUTH 6F

EPD	BW	WW	YW	Milk	TM	ACC	BW	Adj. 205	Adj. 365
-0.7	52	97	28	54		70	862	1457	

Another son from a Ruth female. Ruth 88A is an absolutely gorgeous 3 year old Thunder daughter. We have 10+ Thunder females in our herd and I love them. They are deep, thick and have sound feet and udders. Simply great cows. The Thunder/Special Focus mating was one designed for calving ease. Bull's Eye 82C has a 70 lb birth weight and a -0.7 birth epd. He came out easy and then grew to an impressive adj. weaning weight of 862lbs and gained 3.72 lbs per day to an adj. yearling weight of 1457 lbs. He was the 3rd highest ranked bull in our herd for both weights. If you are looking for a sure shooting calving ease bull with loads of style, great performance and an incredible cow family backing him up then 82C would hit the mark. He is smooth and as long a spined bull as you can get.
Recommended for heifers.



Northern View Bull's Eye 92C

Lot 12 1852050 FTA 92C 11/01/2015 Male

MYTTY IN FOCUS AMF NHF CAF DDF OHF
B P F SPECIAL FOCUS 504 1644193 AMF CAF NHF DMF DDF OHF
 B P F BLACK CASH 341

CFS BISMARCK 11X
NORTHERN VIEW BEAUTY 91A 1744134
 NORTHERN VIEW BEAUTY 96X

S A F FOCUS OF E R AMF NHF CAF DDF OHF
 MYTTY COUNTESS 906
 J R SOMETHING SPECIAL AMF NHF CAC DDF OHF
 B P F BLACK CASH 944
 S A V BISMARCK 5682 AMF NHF CAF DDF OHF
 CFS LADY 8U
 S A V PIONEER 7301 AMF NHF CAF DDF OHF
 MVF BEAUTY 345T

EPD	BW	WW	YW	Milk	TM	ACC	BW	Adj. 205	Adj. 365
0.0	56	98	29	57		71	914	1510	

If you want to target calving ease coupled with growth in your program then Bull's Eye 92C should be given a very careful look. He has a 71lb birth weight and a 0.0 birth epd. They highest weaning weight and yearling weight of all our bulls this year. Gaining 3.72lbs per day he is on the mark with our performance leader in our herd. His dam, 91A is an awesome female. She is out of the Bismarck 11X bull that we selected from the Short Grass sale. His dam is the famous Lady 8U cow at Sandy Bar who fetched \$13000 in their dispersal this past fall. Every female we retained from this bull, who we lost far too early, has been fantastic. Look to Bull's Eye 92C to calve out easy with lively calves that grow and grow. I would suggested keeping females from this bull too. They should make great replacements. This bull is halter broke.
Recommended for heifers.



NORTHERN VIEW...



R B Active Duty 0010X

We are always looking for a bull that can provide unique genetics. Our AI search lead us to Active Duty. He was a bull that had very little use in Canada. Today there are only 156 Active Duty progeny registered in Canada. He is a bull that provides moderate birth and over the top weaning and yearling weights, maternal traits and scrotal development. All are in the top 1% of the breed. The Active Duty progeny at our place are deep, soggy cattle with good temperament. An Active Duty daughter sold to Ray and Barb Airey at the Touch of Class this last fall.

Lot 13



Northern View Full Load 81C

Lot 13 1852040 FTA 81C 02/01/2015 Male

LCC NEW STANDARD AMF NHF CAF DDC OHF
R B ACTIVE DUTY 0010X 1776360 AMF NHF DDF CAF
 B A LADY 6807 305

WINDY WILLOWS ALLIANCE 36S
NORTHERN VIEW TIBBIE 99X 1552563
 NORTHERN VIEW TIBBIE 81T

BON VIEW NEW DESIGN 1407 AMF NHF CAF DDC OHF
 LCC SUNSET K3118 NHF AMF CAF DDF OHF
 VERMILION DATELINE 7078 AMF NHF CAF DDF OHF
 G D LADY HI FLYER 302
 SITZ ALLIANCE 6595 AMF NHF DMF CAF DDF OHF
 WWF STOCKMAN EUTHALLA 127J
 NORTHERN VIEW QUANTUM 86P
 NORTHERN VIEW TIBBIE 71R

EPD	BW	WW	YW	Milk	TM	ACC	BW	Adj. 205	Adj. 365
2.6	62	110	26	57		85	889	1401	

Full Load 81C is out of a beautiful Alliance 36S daughter. We have six Alliance 36S daughters and all very well uddered, angular, feminine, quiet and easy doing cows. When they calve they are extremely easy to work with and manage. 81C carries this temperament. He has great hair, a bucket of nuts, fantastic performance and great feet and legs. 81C is loaded with growth and performance.

Lot 14



Northern View Full Load 84C

Lot 14 1852041 FTA 84C 02/01/2015 Male

LCC NEW STANDARD AMF NHF CAF DDC OHF
R B ACTIVE DUTY 0010X 1776360 AMF NHF DDF CAF
 B A LADY 6807 305

SKYE-VIEW BEEF MAKER 5T AMF
NORTHERN VIEW PRINCESS 95X 1552560
 NORTHERN VIEW PRINCESS 74S

BON VIEW NEW DESIGN 1407 AMF NHF CAF DDC OHF
 LCC SUNSET K3118 NHF AMF CAF DDF OHF
 VERMILION DATELINE 7078 AMF NHF CAF DDF OHF
 G D LADY HI FLYER 302
 BOYD BEEF MAKER 3069 NHF CAF AMF DDF OHF
 SKYE-VIEW QUEEN 4M
 NORTHERN VIEW FLYING ELIXIR70M
 WILBAR PRINCESS 345K

EPD	BW	WW	YW	Milk	TM	ACC	BW	Adj. 205	Adj. 365
3.0	47	98	28	52		86	785	1329	

This is a nicely designed and powerful bull. He is as thick, wide and big topped as he comes. I really appreciate his muscle shape. Full Load 84C is moderate in his all weights from birth to yearling. He is from Princess 95X, the only Beef Maker daughter in our herd. The princess cows are highly maternal and simply produce. A maternal brother to Full Load sold to Mark Beutler in the 2014 Blue Collar.

Kids at work and Play



GOLLY'S TRENCHING

PO Box 11
 GOODEVE, SK S0A 1C0

- COMPLETE WATER SEPTIC SYSTEM
- BACKHOE SERVICE
- DIRT AND GRAVEL HAULING - END DUMP TRAILER
- PAYLOADER WORK

Northern View **Full Load** 98C

Lot 15 1852056 AJF 98C 21/01/2015 Male

LCC NEW STANDARD AMF NHF CAF DDC OHF
R B ACTIVE DUTY 0010X 1776360 AMF NHF DDF CAF
 B A LADY 6807 305

PRAIRIELANE 5057-8127
PRAIRIELANE 8127 ROSEBUD 1035 1620902
 PRAIRIELANE 3011 ROSEBUD 8028

BON VIEW NEW DESIGN 1407 AMF NHF CAF DDC OHF
 LCC SUNSET K3118 NHF AMF CAF DDF OHF
 VERMILION DATELINE 7078 AMF NHF CAF DDF OHF
 G D LADY HI FLYER 302
 PRAIRIELANE 7451-2014-5057
 PRAIRIELANE 0166 ROSEBUD 2104
 PRAIRIELANE IDEAL 0051-3011 (EE)
 PRAIRIELANE 7451 ROSEBUD 1039

EPD	BW	WW	YW	Milk	TM	ACC	BW	Adj. 205	Adj. 365
0.4	67	125	24	58		77	899	1322	

A powerful bull with incredible numbers that is full of bone. Take note of his 899lbs weaning weight. If you analyse this bull's numbers you will see that they put him in the top 1% of the breed in weaning, yearling weights and maternal traits. His dam, 1035Y, was our top choice for females at the Prairielane dispersal. She has been a very good cow but unfortunately broke her back leg this fall. She had her 2016 calf and is doing ok but sadly will have no further calves at Northern View. Alexis is quite proud of her bull that she is offering to you this year. This bull has the birth weight and EPD to be a calving easy bull but I would use him cautiously to ensure he will work well on heifers.



Northern View **Full Load** 105C

Lot 16 1852061 FTA 105C 01/02/2015 Male

LCC NEW STANDARD AMF NHF CAF DDC OHF
R B ACTIVE DUTY 0010X 1776360 AMF NHF DDF CAF
 B A LADY 6807 308

NORTHERN VIEW QUANTUM 82R
NORTHERN VIEW LUCY 89T 1392444
 NORTHERN VIEW LUCY 83R

BON VIEW NEW DESIGN 1407 AMF NHF CAF DDC OHF
 LCC SUNSET K3118 NHF AMF CAF DDF OHF
 VERMILION DATELINE 7078 AMF NHF CAF DDF OHF
 G D LADY HI FLYER 302
 C H QUANTUM 3330
 NORTHERN VIEW PRINCESS 79N
 NORTHERN VIEW FLYING ELIXIR70M
 NORTHERN VIEW LUCY 72J

EPD	BW	WW	YW	Milk	TM	ACC	BW	Adj. 205	Adj. 365
1.8	53	108	20	47		78	811	1291	

This may be the smoothest fanciest Active Duty bull we are offering. He has grown real well with nice weights, with both weaning and yearling weights being in the top 4% of the Angus breed. His mother is Lucy 89T, has been a real good cow here. A maternal sister sold to Keith and Jodi Blight. This bull has a moderate birth weight and birth EPD. For a bull that should add style and attractiveness but not compromise performance take a look at Full Load 105C.
Recommended for heifers.



Creekview **Ideal** 4Y

This is a sire we own with Bell Angus of Pense. He is a broad, deep sided long bull with lots of testicle. His progeny are very impressive for their larger tops, sides, structural soundness and eye appeal. 4Y's consistency and production has allowed us to use him on our first calvers and later cows we are trying to catch back up to earlier calving. In using 4Y we have not compromised any calving ease, performance or maternal qualities. His bulls are competing well with all the other sire groups in this catalogue.

Northern View **Tool Man** 100C

Lot 17 1852057 FTA 100C 23/01/2015 Male

VALLEY BLOSSOM IDEAL 1W
CREEKVIEW IDEAL 4Y 1604060 NHF
 CREEKVIEW PRIDE 207T

CONNEALY THUNDER AMF NHF CAF DDF OHF
NORTHERN VIEW PRINCESS 99Z 1675547
 NORTHERN VIEW PRINCESS 95X

SANDY BAR IDEAL 18S
 VALLEY BLOSSOM BLACKCAP 712P
 SOO LINE HOOSIER 5033
 CREEKVIEW PRIDE 203R
 BALDRIDGE KABOOM K243 KCF CAF
 PARKA OF CONANGA 241 CAC AMF NHF
 SKYE-VIEW BEEF MAKER 5T AMF
 NORTHERN VIEW PRINCESS 74S

EPD	BW	WW	YW	Milk	TM	ACC	BW	Adj. 205	Adj. 365
-1.0	59	89	23	53		72	901	1330	

This bull is fully equipped to be a calving ease bull. The Thunder and Ideal combination equates to a -1.0 birth epd and a 72lb birth weight. Princess 99Z is a typical Thunder daughter. I won't repeat myself on what I think of Thunder. This bull has ample growth and performance he ranked 2/18 in his group at our place. A maternal sister sold to Lock Farms at Macklin in the 2014 Masterpiece sale.

Recommended for heifers.



NORTHERN VIEW...

Lot 18



Northern View **Tool Man** 101C

Lot 18 1852058 FTA 101C 24/01/2015 Male

VALLEY BLOSSOM IDEAL 1W
CREEKVIEW IDEAL 4Y 1604060 NHF
 CREEKVIEW PRIDE 207T
 B C MATRIX 4132 AMF NHF CAF DDF OHF
NORTHERN VIEW EILEENMERE 73Z 1675530
 NORTHERN VIEW EILEENMERE 89R

SANDY BAR IDEAL 18S
 VALLEY BLOSSOM BLACKCAP 712P
 SOO LINE HOOSIER 5033
 CREEKVIEW PRIDE 203R
 O C C EMBLAZON 854E OSF AMF NHF CAF DMF DDF OHF
 CAF PURE PRIDE EXT 99
 EASTONDALE RIGHT TIME 62'03
 EASTONDALE EILEENMERE 12'03

EPD	BW	WW	YW	Milk	TM	ACC	BW	Adj. 205	Adj. 365
-1.6	53	82	16	43		70	868	1252	

Ramp up you calving ease with Tool Man 101C. Eileenmere 73Z is a beautiful BC Matrix daughter. She is deep sided, angular and fantastically uddered. If you want a bull that will calve out easy and have strong maternal progeny this bull may be one you want to explore. Note the -1.6 birth epd and 70lb birth weight and solid birth weight.
Recommended for heifers.

Lot 19



Northern View **Tool Man** 109C

Lot 19 1852065 FTA 109C 05/02/2015 Male

VALLEY BLOSSOM IDEAL 1W
CREEKVIEW IDEAL 4Y 1604060 NHF
 CREEKVIEW PRIDE 207T
 CONNEALY THUNDER AMF NHF CAF DDF OHF
NORTHERN VIEW BARBARA 88Z 1675541
 NORTHERN VIEW BARBARA 70U

SANDY BAR IDEAL 18S
 VALLEY BLOSSOM BLACKCAP 712P
 SOO LINE HOOSIER 5033
 CREEKVIEW PRIDE 203R
 BALDRIDGE KABOOM K243 KCF CAF
 PARKA OF CONANGA 241 CAC AMF NHF
 NORTHERN VIEW QUANTUM 86P
 DOUBLE D BARBARA 37L

EPD	BW	WW	YW	Milk	TM	ACC	BW	Adj. 205	Adj. 365
0.2	44	75	19	41		76	798	1275	

Thunder X Ideal = 76lb = -0.2 birth epd = easy sleeping. You will appreciate the shoulder, head and length in this bull.
Recommended for heifers.

Lot 20



Northern View **Tool Man** 112C

Lot 20 1852068 FTA 112C 07/02/2015 Male

VALLEY BLOSSOM IDEAL 1W
CREEKVIEW IDEAL 4Y 1604060 NHF
 CREEKVIEW PRIDE 207T
 TGA BLACKMAN 8311U
NORTHERN VIEW PRINCESS 101Y 1623555
 NORTHERN VIEW PRINCESS 78W

SANDY BAR IDEAL 18S
 VALLEY BLOSSOM BLACKCAP 712P
 SOO LINE HOOSIER 5033
 CREEKVIEW PRIDE 203R
 GEIS BLACKMAN 224'05
 TGA MS DELEGATE 3145N
 NORTHERN VIEW QUANTUM 86P
 NORTHERN VIEW PRINCESS 79N

EPD	BW	WW	YW	Milk	TM	ACC	BW	Adj. 205	Adj. 365
2.6	46	76	18	41		86	867	1354	

This Blackman grandson is a straight Canadian pedigreed bull. The Princess cow family has produced numerous top quality cow family including lots 15 and 20. Blackman 8311U was a deep sided attractive bull. The 8311U females have worked well for us. On the maternal side you will note the 86P influence. He was a fantastic bull that produced super bulls and heifers. A maternal brother sold to Har J Cattle Co in the 2015 Blue Collar.



Thanks to Prairie Co-op
 for purchasing Eli at 4-H



Northern View **Tool Man** 113C

Lot 21 1852069 FTA 113C 11/02/2015 Male

VALLEY BLOSSOM IDEAL 1W
CREEKVIEW IDEAL 4Y 1604060 NHF
 CREEKVIEW PRIDE 207T

WILLOWVIEW PIONEER 6X
NORTHERN VIEW LAURA 113Z 1675563
 CRESCENT CREEK LAURA 10U

SANDY BAR IDEAL 18S
 VALLEY BLOSSOM BLACKCAP 712P
 SOO LINE HOOSIER 5033
 CREEKVIEW PRIDE 203R
 S A V PIONEER 7301 AMF NHF CAF DDF OHF
 WILLOWVIEW GRAND JUNE 36P
 MINBURN MAIN EVENT 82R
 RON'S LAURA 16F

EPD	BW	WW	YW	Milk	TM	ACC	BW	Adj. 205	Adj. 365
2.1	47	67	16	40		84	830	1352	

Another moderate birth weight bull with the Laura and Pioneer 6X combination produced a bull that catches my eye everyday as I walk to the feed bunk. He is deep bodied, strong topped and impressive in his character. Please note his weights and performance. Laura 113Z is a Pioneer 6X daughter. 6X has been a very good bull for us. He has the ability to produce bulls and heifers. Make sure you locate this bull sale day.



Northern View **Tool Man** 4C

Lot 22 1852542 URZ 4C 01/02/2015 Male

VALLEY BLOSSOM IDEAL 1W
CREEKVIEW IDEAL 4Y 1604060 NHF
 CREEKVIEW PRIDE 207T

WILLOWVIEW PIONEER 6X
NORTHERN VIEW LUCY 19Z 1681926
 NORTHERN VIEW LUCY 28T

SANDY BAR IDEAL 18S
 VALLEY BLOSSOM BLACKCAP 712P
 SOO LINE HOOSIER 5033
 CREEKVIEW PRIDE 203R
 S A V PIONEER 7301 AMF NHF CAF DDF OHF
 WILLOWVIEW GRAND JUNE 36P
 DOUBLE D SMOKIE 21R
 KEMBAR LUCY 20N

EPD	BW	WW	YW	Milk	TM	ACC	BW	Adj. 205	Adj. 365
0.8	41	63	16	37		80	764	1377	

Well here we have another great calving ease bull from Ideal 4Y. This bull is thick and deep, which is a bonus in a bull with birth numbers like he is running. His mother is a very nice cow that we are very happy with. She has a gorgeous Thunder daughter working in our herd. A sleep easy kinda bull here.

Recommended for heifers.



Northern View **Effective** 99C

Lot 23 PENDING FTA 99C 22/01/2015 Male

CAR EFFICIENT 534 AMF CAF DDF NHF OHF
SCHIEFELBEIN EFFECTIVE 61 1707305 AMF CAF DDF NHF
 FROSTY ANSWER 3979

WILLOWVIEW PIONEER 6X
NORTHERN VIEW LUCY 125Z PENDING
 NORTHERN VIEW LUCY 84Z

K C F BENNETT EFFICIENT AMF NHF
 CAR MISS SUSIE 308
 S A V FINAL ANSWER 0035 AMF NHF CAF DDF OHF
 FROSTY ELBA LIZZY 1106
 S A V PIONEER 7301 AMF NHF CAF DDF OHF
 WILLOWVIEW GRAND JUNE 36P
 CONNEALY THUNDER AMF NHF CAF DDF OHF
 NORTHERN VIEW LUCY 86U

EPD	BW	WW	YW	Milk	TM	ACC	BW	Adj. 205	Adj. 365
N/A	-	-	-	-	-	N/A	-	-	-

"Bubba" is our lone Effective calf for this year. We had a bit of semen left in the tank and used it on 125A, a very nice Pioneer 6X daughter. This bull has the genetic package to be nothing but calving ease with Pioneer, Thunder and Effective. 99C is smooth made bull with adequate thickness and a unique presence in the corral. The Effective cattle all come out small and have great hair. We are required to DNA test this bulls grandmother. The hair sample has been submitted and once the results are back his data numbers will be available. Effective progeny from Northern View are working at Lock Farms and Bell Angus.

Recommended for heifers.



Schiefelbein **Effective** 61



Alexis & Ryan Stillborn
winner



NORTHERN VIEW...

Lot 24



Northern View **Arrow** 102C

Lot 24 1852060 FTA 102C 01/02/2015 Male

SKYEBROOK FLY TRAVELER 8X
SKYEBROOK NEW FLY 29Z 1693992
 SKYEBROOK GIRL 9W

KMK ALLIANCE 6595 187 AMF NHF CAF DDF OHF
MVF ZARA LISA 35U 1452468
 MVF ZARA LISA 327R

WHITESTONE FLY TRAVELER 3006 AMF NHF CAF DDF
 SKYE-VIEW ANGEL 4N
 ROYAL NEW LEVEL 38R
 NORTHERN VIEW GIRL 16P
 SITZ ALLIANCE 6595 AMF NHF DMF CAF DDF OHF
 G A R EXT 916 AMF
 MVF VRD DATELINE 13M
 MVF ZARA LISA 54H

EPD	BW	WW	YW	Milk	TM	ACC	BW	Adj. 205	Adj. 365
3.2	43	70	21	43		90	859	1211	

An exciting bull from a very good cow in 35U and our senior herd sire New Fly 29Z. Zara Lisa 35U is a cow were purchased from the Mountain View production sale. She has been a highly productive cow with all her progeny (who did not die or were not free martins), going on to be breeding stock. 29Z was in our pasture during the Sask Angus Tour this past August and caught the attention of many breeders. He is stout and eye appealing. Arrow 102C is a thick great haired bull. There are maternal sisters working at Black Creek Cattle Co and Airey Cattle Co.

Lot 25



Northern View **Pioneer** 16C

Lot 25 1852556 URZ 16C 02/03/2015 Male

S A V PIONEER 7301 AMF NHF CAF DDF
WILLOWVIEW PIONEER 6X 1584575
 WILLOWVIEW GRAND JUNE 36P

WINDY WILLOWS ALLIANCE 36S
NORTHERN VIEW MAXINE 24X 1552208
 NORTHERN VIEW MAXINE 20T

S A V FINAL ANSWER 0035 AMF NHF CAF DDF
 S A V BLACKBIRD 5297 CAC
 KENOSEE PARK 473 29G
 WILLOWVIEW GRAND JUNE 4H
 SITZ ALLIANCE 6595 AMF NHF DMF CAF DDF
 WWF STOCKMAN EUTHALLA 127J
 DOUBLE D SMOKIE 21R
 NORTHERN VIEW MAXINE 18P

EPD	BW	WW	YW	Milk	TM	ACC	BW	Adj. 205	Adj. 365
2.1	41	70	15	36		90	808	1390	

This bull is from our senior herd sire that we own with Bell Angus at Pense. 6X has done a very good job for us producing good bulls and heifers. I really appreciate the depth and volume in Pioneer 16B. He has very good scrotal development and I really liked his hair he had to work with when I clipped him. A maternal sister sold to Dan and Lana Petherbridge at last year's Blue Collar sale.

Northern View **Emperor** 8C

Lot 26 1852546 URZ 8C 09/02/2015 Male

SYDGEN C C & 7 AMF NHF CAF DDF
HOOVER EMPEROR 1719202 AMF NHF CAF DDF
 BLKCP EMPRESS ELLSTON G403

WINDY WILLOWS ALLIANCE 36S
NORTHERN VIEW BLACKCAP 38X 1552217
 NORTHERN VIEW BLACKCAP 5N

S A F CONNECTION AMF NHF CAF DDF
 SYDGEN FOREVER LADY 4087 AMF
 TC FRICTION 5130 AMF CAF NHF DDF
 BLKCP EMPRESS ELLSTON D515 CAF
 SITZ ALLIANCE 6595 AMF NHF DMF CAF DDF
 WWF STOCKMAN EUTHALLA 127J
 EBON HILL BLACK POWER 41'99
 NORTHERN VIEW COULEE 5J

EPD	BW	WW	YW	Milk	TM	ACC	BW	Adj. 205	Adj. 365
3.6	53	85	28	55		85	795	1362	

Here is a bull from a young AI Sire that has only 39 progeny registered in Canada, a real unique genetic opportunity. Emperor 8C is from one of the beautiful Alliance 36S daughters we have in our herd. These Alliance daughters have great feet, deep bodies, awesome udders and a feminine presence. There are two maternal sisters working at Black Creek Cattle Co.

BIEBER TRUCKING

Duff, Saskatchewan

306-728-4999 or 306-728-7854

*Congratulations on your Tenth Annual
 Blue Collar Bull Sale*

Lot 26



Willowview **Pioneer** 6X

NORTHERN VIEW FEMALES...

All our females presented here are from proven cow families that we have produced quality cattle for us over the years. These females are from the top cut of our replacement pen. All the dams are still in our herd, have calved or will be calving this spring and will be bred again to calve next year.

Northern View **Lucy** 97C

Lot 27 1852055 FTA 97C 18/01/2015 Female

VALLEY BLOSSOM IDEAL 1W
CREEKVIEW IDEAL 4Y 1604060 NHF
 CREEKVIEW PRIDE 207T

S A V HERITAGE 6295 AMF NHF CAF DDF
NORTHERN VIEW LUCY 74Z 1675531
 NORTHERN VIEW LUCY 83R

SANDY BAR IDEAL 18S
 VALLEY BLOSSOM BLACKCAP 712P
 SOO LINE HOOSIER 5033
 CREEKVIEW PRIDE 203R
 CAR DUKE 104
 S A V BLACKCAP MAY 4136 CAF
 NORTHERN VIEW FLYING ELIXIR70M
 NORTHERN VIEW LUCY 72J

EPD	BW	WW	YW	Milk	TM	ACC	BW	Adj. 205	Adj. 365
0.8	54	94	19	46		71	723	1097	

A powerful daughter out of a foundational cow family the Lucy's. This heifer is very attractive and angular. Her mother, Lucy 74C is a powerful cow that produces a great one every year. She has a terrific Substantial heifer calf on the ground again this year.

Lot 27



Northern View **Beauty** 123C

Lot 28 1852076 FTA 123C 01/03/2015 Female

S A V PIONEER 7301 AMF NHF CAF DDF
WILLOWVIEW PIONEER 6X 1584575
 WILLOWVIEW GRAND JUNE 36P

SITZ UPWARD 307R AMF NHF CAF DMF DDF
NORTHERN VIEW BEAUTY 87Y 1623544
 NORTHERN VIEW BEAUTY 78K

S A V FINAL ANSWER 0035 AMF NHF CAF DDF
 S A V BLACKBIRD 5297 CAC
 KENOSEE PARK 473 29G
 WILLOWVIEW GRAND JUNE 4H
 CONNEALY ONWARD AMF NHF CAF DDF DMF
 SITZ HENRIETTA PRIDE 81M
 NEW FORCE LASER 3H
 CRESCENT CREEK BEAUTY 118E

EPD	BW	WW	YW	Milk	TM	ACC	BW	Adj. 205	Adj. 365
2.8	46	81	20	43		92	721	1182	

A very attractive Upward granddaughter. We have several Upwards in production and they are proving to be very valuable. This Pioneer 6X daughter is long spined yet deep in body. The highly maternal feminine potential of Beauty 123C should make her very appealing sale day. We have a maternal sister working for us. She is doing awesome. A maternal brother sold to Brian and Corrie Stadnyk in the 2014 Blue Collar.

Lot 28



Northern View **Bea** 127C

Lot 29 1852080 TTF 127C 03/03/2015 Female

S A V PIONEER 7301 AMF NHF CAF DDF
WILLOWVIEW PIONEER 6X 1584575
 WILLOWVIEW GRAND JUNE 36P

PRAIRIELANE 6018-9011
PRAIRIELANE 9011 BEA 1166 1621021
 PRAIRIELANE 7026 BEA 9051

S A V FINAL ANSWER 0035 AMF NHF CAF DDF
 S A V BLACKBIRD 5297 CAC
 KENOSEE PARK 473 29G
 WILLOWVIEW GRAND JUNE 4H
 PRAIRIELANE FINAL ANSWER 6018
 PRAIRIELANE 5057 ESTELLE 7071
 PRAIRIELANE 5057-7026
 PRAIRIELANE 0051 BEA 4140

EPD	BW	WW	YW	Milk	TM	ACC	BW	Adj. 205	Adj. 365
3.0	62	102	23	54		95	882	1170	

Bea 127C is a very feminine attractive female. She comes from a solid young dam that we selected out of the Praireland Dispersal for Talon. Bea 127C is a very deep sided and structurally sound heifer. Talon is very proud to present her for your appraisal at the sale. A female that should make a consistent and solid cow that is backed by years of quality Angus breeding. A maternal sister was purchased by Caragata Ranch at the 2015 Blue Collar.

Lot 29



Thanks to Bieber Trucking
 and Mark's Agency for
 purchasing Beau at 4-H

April 9, 2016

NORTHERN VIEW ANGUS

HILLSIDE WELDING



Fabricating,
 Repairing, Mobile Welding,
 Hydraulic Hoses, Certified Welder
R.R.#1 MELVILLE, SK. S0A 2P0
P.H. 728-4095 OR 728-8375 CELL
FAX 728-4782

NORTHERN VIEW FEMALES...



Northern View SMW **Gustov** 3Z

"Gus" is a power bull that has been producing low birth weight calves. His weaning and yearling weights are in the top 8% of the breed and he has a birth epd of 0.8. A real curve bender type of bull. His calves come out easy, really grow and have great hair. His dam Neonia 27S was a cow that we lost to injury and sadly a cow with a bright future had to be shipped to soon. Gus was her last calf. Gus was shown from a calf to a 2 year old. He was supreme champion bull at the Manitoba Fall Fair as a 2 year old. He most recently displayed in the yards last fall by Bar CR Angus. Gus is owned by Northern View, Wagner Angus, Bar CR Angus and Miller Wilson Angus.

Northern View **Tibbie** 1C

Lot 30 1852539 URZ 1C 08/01/2015 Female

REMITALL H RACHIS 21R AMF NHF OSF
NORTHERN VIEW SMW GUSTOV 3Z 1681901 NHF OSF AMF
 ISLA BANK NEONIA 27S
 MVF VRD DATELINE 13M
MVF TIBBIE 203T 1419817
 GREENBUSH PRIDE LADY 25J

REMITALL NIGHTHAWK 37N
 HENDERSON MISSIE 32'02
 BLACK RIDGE W WIDESPREAD 2K
 ISLA BANK NEONIA 27N
 VERMILION DATELINE 7078 AMF NHF CAF DDF OHF
 MVF ZARA LISA 24F
 BROOKMORE LANCER 32F
 GREENBUSH PRIDE LADY 18B

EPD	BW	WW	YW	Milk	TM
1.0	48	88	13	37	

ACC	BW	Adj. 205	Adj. 365
80	693	948	

The female goes back to the famous Tibbie Cow family at Mountain View Farm. We selected 203T from their dispersal. She has not disappointed us in her production. A maternal sister is working at Nolan Cattle Co and a brother was purchased by Rick Cowan.

Northern View **Queen** 3C

Lot 31 1852541 URZ 3C 26/01/2015 Female

REMITALL H RACHIS 21R AMF NHF OSF
NORTHERN VIEW SMW GUSTOV 3Z 1681901 NHF OSF AMF
 ISLA BANK NEONIA 27S
 NORTHERN VIEW QUANTUM 86P
NORTHERN VIEW QUEEN 9W 1514997
 SKYE-VIEW QUEEN 4M

REMITALL NIGHTHAWK 37N
 HENDERSON MISSIE 32'02
 BLACK RIDGE W WIDESPREAD 2K
 ISLA BANK NEONIA 27N
 GDAR QUANTUM 963
 CRESCENT CREEK BLACKBIRD 21J
 HILOW RIGHT TIME 1J
 BAR KAY CEE ERICA 36B

EPD	BW	WW	YW	Milk	TM
-0.6	45	93	16	39	

ACC	BW	Adj. 205	Adj. 365
80	747	1002	

A Gus heifer out of a Quantum 86P daughter. The 86P cattle are highly fertile and attractive cattle that have produced well for us. This is a very powerful and beautifully haired female.

Northern View **Maxine** 10C

Lot 32 1852548 URZ 10C 13/02/2015 Female

NORTHERN VIEW NET WORTH 104Y
NORTHERN VIEW NETWORTH 124A 1763000
 NORTHERN VIEW PRIDE 8Y

DOUBLE D SMOKIE 21R
NORTHERN VIEW MAXINE 20T 1414197
 NORTHERN VIEW MAXINE 18P

BELL NET RETURN 3U
 NORTHERN VIEW TIBBIE 71R
 TGA BLACKMAN 8311U
 PRIDE OF BRYNTERION 9P
 BORDER BUTTE SON OF A GUN 2'02
 ALLENCROFT MISS MARION 05 64E
 SITZ ALLIANCE 6595 AMF NHF DMF CAF DDF OHF
 NORTHERN VIEW MAXINE 1M

EPD	BW	WW	YW	Milk	TM
3.5	37	68	15	33	

ACC	BW	Adj. 205	Adj. 365
62	605	875	

This is a deep bodied, stylish, broad topped and fantastically haired heifer. Maxine 10C is was the kind of calf that demanded your attention in the pasture in the summer time and has carried that presence on to today. She is out of our 124A bull who is a big hipped furry bull that sold to J & S Angus last spring.

WESTSIDE
CONSUMER
SALES & SERVICE

Hwy #15 West
Melville, SK
728-2580
Eric Sagan

- * Affordable Delta Tires
- * Sandblasting & Welding
- * In Farm Repair
- * Power Volt Batteries
- * Filters
- * Antifreeze

- * Oil
- * V-Belts
- * Cutting Parts
- * Guards
- * Sections
- * Canvas

Lot 30



Lot 31



Lot 32



SPONSORS...

Crop Production Services



"On Track For Success"



**Custom cattle
handling & feeding
systems**

Proven
SEED

Proven Forage Seed

**Custom forage
blends**

**Silage and grazing
corn**

For more information on equipment, seed or forage
please call

Lemberg
306-335-2265

Yorkton
306-782-2765

Swan River
204-734-6162

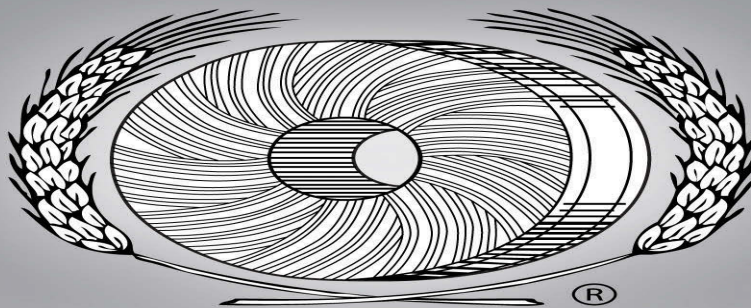
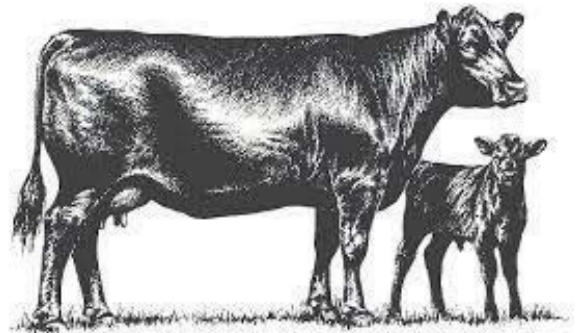
Melville
306-728-5941

SPONSORS...

Hackman Feeds

Calving time is here, see Hackman Feeds for all your supplies. We have colostrum, scour guard vaccines, scour boluses, diatomaceous earth, medicated calf ration, milk replacer, e cell, electrolytes, vitamins and calf span. We have a variety of loose minerals and tubs to get your cows and bulls ready for breeding season.

Call us at (306) 786-7713
385 5 Avenue North Yorkton, SK S3N 2Z9, Canada



GRAIN MILLERS

Terry Tyson
866-730-4682
306-786-4682 (Direct)
Fax: 306-786-6733
terry.tyson@grainmillers.com

Scott Shiels
866-730-4682
306-786-5657 ext 120(Direct)
Fax: 306-786-6733
scott.shiels@grainmillers.com

SPONSORS...

FUCHS FARM SUPPLY
Serving Western
CANADA
your one stop Ag Supply Shop

Office (306) 762-2125

Kevin (306) 536-4159
Email: fuchsfarms@hotmail.com

Michael (306) 536-4606
Website: www.fuchs.ca

Melville Veterinary Clinic

DR. DALE E.G. COCHRANE, D.V.M.
DR. BARBARA EVANS, D.V.M.
NORA COCHRANE, A.H.T.
SHAUNA SCHMIDT, A.H.T.

PHONE (306) 728-4456
FAX (306) 728-4460
P.O. BOX 2048
202 HERITAGE DRIVE
MELVILLE, SASK. S0A 2P0

www.horizoncu.ca

Branches in:
Melville 306-728-5425
Grayson 306-794-2155
Grenfell 306-697-2803
Neudorf 306-748-2255
Wolseley 306-698-2252

HORIZON
CREDIT UNION
Today, Tomorrow, Together

See us for all your financial needs.

Proudly Supporting the Communities We Serve

CO-OP **CHAD KOHLENBERG**
Petroleum Manager

P.O. Box 1330
Melville, SK Canada
S0A 2P0
E-mail: prairiecoop.petro@sasktel.net

Business (306) 728-5811
Fax (306) 728-2875
Residence (306) 748-2272

BOOK THE MOST TRUSTED BRAND IN LIVESTOCK PHOTOGRAPHY

2016 NATIONAL WESTERN

CHAMPION POLLED HEREFORD

We specialize in on-farm shoots and offer unmatched quality, professionalism and an online ordering system that provides 24/7 access to your photos. Call to book your shoot with us today!

Maureen Tubman
phone 306 730 7822
toll free 866 844 2295
info@showchampions.com

showchampions
www.showchampions.com

Piller Service Ltd.

Ag, Semi & Auto Repair & Parts
Mobile Service, Mobile Welding
Air Conditioner Repairs

PHONE 306.748.4800 CELL 306.222.6675
FAX 306.748.4801

HIGHWAY #22 EAST
BOX 329, NEUDORF, SASK. S0A 2T0

N&R Concrete Ltd.

Terry Rathgeber

Box 881
1161 Hwy 15 West
Melville, SK. S0A 2P0
Email: n.rconcrete@sasktel.net

Phone: 306-728-5433
Cell: 306-728-8062
Fax: 306-728-5472
www.nrconcrete.com

SPONSORS...



CATTLE COUNTRY
1-306-728-3168
Melville, Sask

We have all your livestock handling needs!!!

Also specializing in portable buildings ranging from 8x8 to 30x50.

CATTLECOUNTRY@OUTLOOK.CA



1



2



3



4



TRACY PIZZEY
204-724-4912

NEW AT SULLIVANS

1- TIGER TOOTH COMB.
Teflon with extra length in teeth good for the long thick hair.

2 - LAKESIDE LIGHTS
that attach to the chute and then there is no shadows while clipping.

3 -SHOCK.
This mixture of all natural ingredients creates a show day hair pop like no other. It penetrates deep, forcing the hair to stand at attention. Sullivan's Shock gives a deeper, fuller look to the hair while also adding shine without using heavy oils that will weigh the hair down. Use Sullivan's Shock before clipping to make the hair rise for an easier, smoother clip. Sullivan's Shock is a ready to use product, no dilution needed.
- Gives long lasting body to lifeless hair!
- Light oil shine!
- Show Day Hair Pop!

4- SHORTY STALL DIVIDER.
The "Shorty" Stall Dividers are great to use in between your 8 ft dividers leaving more room behind your stall while keeping your cattle in line. An added bonus to these dividers is that the stall mat will easily fit through the bottom section, allowing you to use the same mat for two or more stalls depending on your mat length.



J Square S **Fireman** 14Y



Maternal sister to lot 33

EPD	BW	WW	YW	Milk	TM
2.8	49	84	18	43	

ACC	BW	205	365
92	721	1207	

Herd Bull Alert. This summer we were fortunate to host the Saskatchewan Angus Tour with a group of reputable breeders and Fireman 516C highlighted our portion of the tour. He posts a very respectable set of EPD's and solid weaning and yearling weights. Like his sire, he is very complete in his makeup, very sound on his feet with a hind good leg and effortless on the move. He is very hairy with a strong top and a big hind quarter and adequate scrotal development. His dam, Soo Line Dinter Pride 1078 has been an excellent producer since we bought her from Roger Hardy's historical dispersal. She is very moderate framed with a nice clean front end, good length of spine and a nice level udder. A maternal sister sold to Rawlyk Livestock in the Power and Perfection in 2013. J Square S Fireman 516C is a definite sale feature.

Lot 33



J Square S **Fireman** 516C

Lot 33 1834118 SIES 516C 10/01/2015 Male

MJ ESCALADE 2W NHF AMF
J SQUARE S FIREMAN 14Y 1601285 (RC)
 BROOKMORE ENCHANTRESS 229S
 HF KODIAK 5R MAF AMF NHF CAF DDF OHF
SOO LINE DINTER PRIDE 1078 1605898
 SOO LINE DINTER PRIDE 8517

REMITALL H RACHIS 21R AMF NHF OSF
 REMITALL ANNIE 543T
 S A V 004 DENSITY 4336 AMF NHF CAF DDF (EE)
 BROOKMORE ENCHANTRESS 17N
 SANDY BAR ADVANTAGE 43M DDF
 WILBAR RUBY 955N
 GEIS BLACKMAN 224'05
 TLA DINTER PRIDE 10R

Lot 34



J Square S **Fireman** 81C

Lot 34 1834117 SIES 81C 08/01/2015 Male

MJ ESCALADE 2W NHF AMF
J SQUARE S FIREMAN 14Y 1601285 (RC)
 BROOKMORE ENCHANTRESS 229S
 HF TIGER 5T CAF NHF AMF OSF DDF OHF
J SQUARE S BLACKCAP 85Y 1601304
 J SQUARE S BLACKCAP 13W

REMITALL H RACHIS 21R AMF NHF OSF
 REMITALL ANNIE 543T
 S A V 004 DENSITY 4336 AMF NHF CAF DDF (EE)
 BROOKMORE ENCHANTRESS 17N
 HF KODIAK 5R MAF AMF NHF CAF DDF OHF
 HF ECHO 84R
 NORTHERN VIEW REALLY WINDY 82S
 NORTHERN VIEW BLACKCAP 22N

EPD	BW	WW	YW	Milk	TM
3.3	47	85	17	41	

ACC	BW	205	365
84	625	1068	

Another solid Fireman 14Y son who is sure to improve you calf crop. Take note that his breeding is similar to the previous lot. Even though our herd is smaller in numbers, we try to breed many half and three quarter siblings to increase the consistency in our calf crops.
Will work on cows or heifers.

Lot 35



J Square S **Attack** 514C

Lot 35 1833997 SIES 514C 09/01/2015 Male

LCC NEW STANDARD AMF NHF CAF DDC OHF
R B ACTIVE DUTY 0010X 1776360 AMF NHF DDF CAF
 B A LADY 6807 305
 EXAR MANNA 2466
JUSTAMERE 2466 ECHO 516S 1339318
 HFDF ECHO 38N

BON VIEW NEW DESIGN 1407 AMF NHF CAF DDC OHF
 LCC SUNSET K3118 NHF AMF CAF DDF OHF
 VERMILION DATELINE 7078 AMF NHF CAF DDF OHF
 G D LADY HI FLYER 302
 ER DENTON K240 AMF NHF CAF OHF
 BLACKJACKS BLACKCAP 005
 RIVERBEND POWERLINE 0050
 HF ECHO 83J

EPD	BW	WW	YW	Milk	TM
1.3	56	104	25	53	

ACC	BW	205	365
84	682	1164	

A young bull that is sure to add pounds to your calf crop. Attack 514C is a long spined bull with a thick hair coat and more than adequate scrotal development. His outcross pedigree leaves you with endless breeding possibilities. His dam is a highly productive cow of the Echo cow family. This past fall a maternal sister sold to Cranberry Creek Angus.
Recommended for heifers or cows.

J SQUARE S...

View Sale Bull Videos at:
www.cattlevids.ca

Lot 36



R B Active Duty 0010X



J Square S Active Duty 508C

Lot 36 1833992 SIES 508C 06/01/2015 Male

EPD	BW	WW	YW	Milk	TM	ACC	BW	205	365
0.0	64	121	27	59		80	743	1245	

LCC NEW STANDARD AMF NHF CAF DDC OHF
R B ACTIVE DUTY 0010X 1776360 AMF NHF DDF CAF
 B A LADY 6807 305
 CONNEALY RIGHT ANSWER 746 AMF NHF CAF DDF OHF
J SQUARE S FOREVER LADY 304A 1718687
 TRIPLE L J&S FOREVER LADY 301Y
 BON VIEW NEW DESIGN 1407 AMF NHF CAF DDC OHF
 LCC SUNSET K3118 NHF AMF CAF DDF OHF
 VERMILION DATELINE 7078 AMF NHF CAF DDF OHF
 G D LADY HI FLYER 302
 S A V FINAL ANSWER 0035 AMF NHF CAF DDF OHF
 HAPPY DELL OF CONANGA 262
 HF TIGER 5T CAF NHF AMF OSF DDF OHF
 GDAR FOREVER LADY 9136

Sale Feature. J Square S Active Duty 508C is a son of the sought after RB Active Duty 0010X who is leaving his mark both in Canada and south of the border. His acceleration from birth to weaning has made him a very popular AI sire. Not to mention that semen availability is very low making this opportunity to own a direct son even more rewarding. He is very deep bodied, square made and has a thick hair coat. Alongside his Right Answer dam, they were one of the many highlights during our summer tour. Take note that his great grand dam is the famous GDAR Forever Lady 9136.
Recommended for heifers.

Lot 37



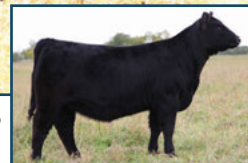
Sire of Lots 37 & 38



Lot 38



Maternal sister to Lot 38



J Square S Slowride 528C

Lot 37 1834004 SIES 528C 28/01/2015 Male

JL WARDEN 1220
HLC 1220 SLOW RIDE 266A 1736107
 HLC MISS MARION 5X
 MJ ESCALADE 2W NHF AMF
J SQUARE S MAIDEN 6Z 1660287
 BROOKMORE MAIDEN 55U
 SITZ UPWARD 307R AMF NHF CAF DMF DDF
 JL FLORESSA 8214
 SPRUCE VIEW RENOVATOR 182U
 DOUBLE D MISS MARION 41R
 REMITALL H RACHIS 21R AMF NHF OSF
 REMITALL ANNIE 543T
 S A V 004 DENSITY 4336 AMF NHF CAF DDF OHF (EE)
 BROOKMORE MAIDEN 88P CAF

EPD	BW	WW	YW	Milk	TM	ACC	BW	205	365
3.3	47	85	23	47		90	720	1232	

These are the first HLC 1220 Slow Ride 266A sons to sell. Slow Ride is our newest walking bull that we bought from Hollinger Land and Cattle in 2014. He was the lead off bull and high seller for them that day. Slowride 528C reminds me a lot of his sire when we bought him. He has an abundance of muscle shape, excellent scrotal development and is very deep bodied. His young Escalade dam, yet early in her years of production is proving to be a very productive cow.

Recommended for cows.

J Square S Stark 531C

Lot 38 1834008 SIES 531C 05/02/2015 Male

JL WARDEN 1220
HLC 1220 SLOW RIDE 266A 1736107
 HLC MISS MARION 5X
 S A V 004 DENSITY 4336 AMF NHF CAF DDF OHF (EE)
J SQUARE S TIBBIE 13Z 1660272
 MVF TIBBIE 60S
 SITZ UPWARD 307R AMF NHF CAF DMF DDF
 JL FLORESSA 8214
 SPRUCE VIEW RENOVATOR 182U
 DOUBLE D MISS MARION 41R
 S A V 8180 TRAVELER 004 AMF NHF CAF DMF DMF OSF DDF OHF
 S A V MAY 7238 CAF DDF
 G A R RETAIL PRODUCT AMF NHF CAF DDF OHF
 MVF TIBBIE 003N

EPD	BW	WW	YW	Milk	TM	ACC	BW	205	365
3.7	54	96	24	51		90	761	1228	

Stark 531C is a really attractive, long bodied Slow Ride son. He is very smooth made through his front end and has a character Angus head. His Density dam is a beautiful cow that stems from the Tibbie cow family. The maternal strength behind this young bull will make you want to keep all of his heifer calves as replacements. A maternal sister sold to Youngdale Angus in the 2014 Power and Perfection Sale during Agribition.



Dam of lot 39



Maternal brother to lot 39



Maternal brother to lot 39

Lot 39



J Square S **Twitch** 509C

Lot 39 1852795 SIES 509C 06/01/2015 Male

SANKEYS LAZER 609 OF 6N AMF DMF
SANKEYS JUSTIFIED 101 1762026
SANKEYS ERICA 525

S A V 004 DENSITY 4336 AMF NHF CAF DDF (EE)
BROOKMORE ENCHANTRESS 229S 1345829
BROOKMORE ENCHANTRESS 17N

EXAR LUTTON 1831 AMF NHF CAF DDF OHF
ROTH ELDORENE 1195 DMF
DAJS ALL STAR M243 OHF
EXARA ERICA 6338
S A V 8180 TRAVELER 004 AMF NHF CAF DMF DWF OSF DDF
S A V MAY 7238 CAF DDF
PF 7215 AVENGER 0232
BROOKMORE ENCHANTRESS 190H

EPD	BW	WW	YW	Milk	TM
5.0	56	95	14	42	

ACC	BW	205	365
82	760	1221	

Twitch 509C is the result of an exciting mating between the 2013 NWSS Champion Angus Bull, Sankeys Justified 101 and our current donor cow, Brookmore Enchantress 229S. Enchantress 229S is a superb daughter of the famous SAV Density. She is a powerful, beautifully uddered cow that produces herd bulls year after year. Combine her with the many time winning Justified and your result is Twitch 509C. Twitch was a feature of our summer tour as well as our fall show string. He was named Reserve Champion Bull Calf at MLE 2015. He is a wide based bull, with a square hip, broad top and clean extension from his shoulder through to his head. The Justified sire group of 2015 has not disappointed. This past fall, paternal sisters to Twitch 509C sold to Belvin Angus and Blairs.Ag as well as five strong Justified sons are to sell in this sale. Take note that four of them are 7/8 brothers. Maternal brothers have sold to Hamilton Farms, Brian Eisner, Cranberry Creek Angus, Michael Lundago and Dave Garvey. **Recommended for cows.**

Lot 40



Lot 41



J Square S **Justified** 501C

Lot 40 1833985 SIES 501C 02/01/2015 Male

SANKEYS LAZER 609 OF 6N AMF DMF
SANKEYS JUSTIFIED 101 1762026
SANKEYS ERICA 525

S A V 004 DENSITY 4336 AMF NHF CAF DDF (EE)
BROOKMORE KARAMA 204X 1558193
BROOKMORE KARAMA 40M

EXAR LUTTON 1831 AMF NHF CAF DDF OHF
ROTH ELDORENE 1195 DMF
DAJS ALL STAR M243 OHF
EXARA ERICA 6338
S A V 8180 TRAVELER 004 AMF NHF CAF DMF DWF OSF DDF
S A V MAY 7238 CAF DDF
PF 7215 AVENGER 0232
BROOKMORE KARAMA 119F

EPD	BW	WW	YW	Milk	TM
3.1	55	96	19	47	

ACC	BW	205	365
66	520	1036	

Here is a great opportunity to own a son of the 2013 NWSS Grand Champion Angus Bull, Sankeys Justified 101. J Square S Justified 501C is great haired, stout hipped and very attractive. He is a bull with lots of character and his movement is effortless. His dam is one of our top cows at the farm. She is moderate in stature, deep bodied and has a beautiful udder.

J Square S **Justified** 502C

Lot 41 1833987 SIES 502C 02/01/2015 Male

SANKEYS LAZER 609 OF 6N AMF DMF
SANKEYS JUSTIFIED 101 1762026
SANKEYS ERICA 525

S A V 004 DENSITY 4336 AMF NHF CAF DDF (EE)
BROOKMORE KARAMA 204X 1558193
BROOKMORE KARAMA 40M

EXAR LUTTON 1831 AMF NHF CAF DDF OHF
ROTH ELDORENE 1195 DMF
DAJS ALL STAR M243 OHF
EXARA ERICA 6338
S A V 8180 TRAVELER 004 AMF NHF CAF DMF DWF OSF DDF
S A V MAY 7238 CAF DDF
PF 7215 AVENGER 0232
BROOKMORE KARAMA 119F

EPD	BW	WW	YW	Milk	TM
3.1	55	96	19	47	

ACC	BW	205	365
68	597	1075	

Another young herd bull prospect you won't want to miss sale day. A full brother to the previous lot, who exemplifies all the same characteristics yet with a little more power. These Justified offspring are sure eye catching. Paternal sisters sold to Belvin Angus and Blairs.Ag this past fall.

J SQUARE S...

Lot 42



Maternal brother to Lot 42



J Square S **Justified** 504C

Lot 42 1833989 SIES 504C 03/01/2015 Male

SANKEYS LAZER 609 OF 6N AMF DMF SANKEYS JUSTIFIED 101 1762026 SANKEYS ERICA 525						EXAR LUTTON 1831 AMF NHF CAF DDF OHF ROTH ELDORENE 1195 DMF DAJS ALL STAR M243 OHF EXARA ERICA 6338 MINBURN MAIN EVENT 71N MINBURN JOY 34L CRESCENT CREEK CHIEF 80G CRESCENT CREEK ROSEBUD 38D			
MINBURN MAIN EVENT 82R CRESCENT CREEK ROSEBUD 96U 1435796 CRESCENT CREEK ROSEBUD 42M									
EPD	BW	WW	YW	Milk	TM	ACC	BW	205	365
4.9	50	88	18	43		94	674	1173	

This is the thickest bull in the pen. He is the kind that will raise you deep productive females or heavy muscled steer calves. Either way, he will increase your profits. Crescent Creek Rosebud 96U has produced four bulls that have sold through this sale and Justified 504C will be her fifth. She is moderate in frame, yet brings in one of the heaviest calves come fall and is always one of the first cows to calve every year.

Lot 43



J Square S **Justified** 83C

Lot 43 1834001 SIES 83C 12/01/2015 Male

SANKEYS LAZER 609 OF 6N AMF DMF SANKEYS JUSTIFIED 101 1762026 SANKEYS ERICA 525						EXAR LUTTON 1831 AMF NHF CAF DDF OHF ROTH ELDORENE 1195 DMF DAJS ALL STAR M243 OHF EXARA ERICA 6338 S A V 8180 TRAVELER 004 AMF NHF CAF DMF DMF OSF DDF S A V MAY 7238 CAF DDF PF 7215 AVENGER 0232 GREENBUSH GEORGINA 37F			
S A V 004 DENSITY 4336 AMF NHF CAF DDF (EE) GREENBUSH GEORGINA 18U 1453564 GREENBUSH GEORGINA 34P									
EPD	BW	WW	YW	Milk	TM	ACC	BW	205	365
5.6	50	88	16	41		100	634	1089	

Justified 83C is a stout made, strong topped, hairy individual. He is out of the Georgina cow family that has made a huge impact on our cow herd. Every female from this cow family has been retained in herd. Consistency is evident as he is a 7/8 brother to 501C, 502C and Twitch 509C the bull calf we campaigned this fall. Maternal brothers have sold to Husum Ranch and Wilmar Kusey. **Recommended for cows.**

Lot 44



J Square S **Motive** 513C

Lot 44 1833996 SIES 513C 08/01/2015 Male

HF KODIAK 5R MAF AMF NHF CAF DDF SOO LINE MOTIVE 9016 1504907 TLA BEAUTY 5R						SANDY BAR ADVANTAGE 43M DDF WILBAR RUBY 955N RR 7407 RAINMAKER 2154 TERRLENE BEAUTY 35F CONNEALY ONWARD AMF NHF CAF DDF DMF SITZ HENRIETTA PRIDE 81M NICHOLS EXTRA H6 AMF NHF CAF DDF MVHF TIBBIE 39B			
SITZ UPWARD 307R AMF NHF CAF DMF DDF J SQUARE S TIBBIE 22Y 1601313 MVF TIBBIE 616S									
EPD	BW	WW	YW	Milk	TM	ACC	BW	205	365
0.8	55	101	26	54		86	741	1140	

A maternal brother to our high selling bull last year J Square S Stimulant 408B purchased by Trevor Smith of Spy Hill, SK. Motive 513C is a very smooth made Motive son out of a moderate Upward dam that brings in a top end calf every fall. He has a nice moderate birth weight and a very nice set of EPD's. **Will work on heifers or cows.**



Sire of Lot 44



Maternal brother to Lot 44

Updated Information:
For the most current sale information visit
www.jssangus.com

J SQUARE S FEMALES...

J Square S Judy 521C

Lot 45 1889843 SIES 521C 20/01/2015 Female

CONNEALY STIMULUS 8419 AMF NHF CAF DMF DDF
FF STIMULANT Y40 1707318
 FF LUCY U25

MJ ESCALADE 2W NHF AMF
J SQUARE S JUDY 20Z 1660286
 NORTHERN VIEW JUDY 43U

H A POWER ALLIANCE 1025 AMF NHF CAF DMF DDF
 BLACK CREESA OF CONANGA 5332 DDF
 TC GRID TOPPER 355 AMF NHF CAF DDF
 FF CANDACE P1
 REMITALL H RACHIS 21R AMF NHF OSF
 REMITALL ANNIE 543T
 WINDY WILLOWS ALLIANCE 36S
 NORTHERN VIEW JUDY 35R

EPD	BW	VW	YW	Milk	TM	ACC	BW	205	365
3.7	49	88	28	53		88	647	948	

This heifer is a true example of what our walking bulls have done for us. She is a Stimulant out of an Escalade cow, our two main herd bulls. These Stimulant daughters are proving to be good, productive cows.



J Square S Blackcap 530C


Lot 46 1834006 SIES 530C 01/02/2015 Female

CONNEALY STIMULUS 8419 AMF NHF CAF DMF DDF
FF STIMULANT Y40 1707318
 FF LUCY U25

NORTHERN VIEW QUANTUM 86P
NORTHERN VIEW BLACKCAP 1T 1378546
 NORTHERN VIEW BLACKCAP 11P

H A POWER ALLIANCE 1025 AMF NHF CAF DMF DDF
 BLACK CREESA OF CONANGA 5332 DDF
 TC GRID TOPPER 355 AMF NHF CAF DDF
 FF CANDACE P1
 GDAR QUANTUM 963
 CRESCENT CREEK BLACKBIRD 21J
 NORTHERN VIEW FLYING ELIXIR 70M
 NORTHERN VIEW BLACKCAP 10J

EPD	BW	VW	YW	Milk	TM	ACC	BW	205	365
1.2	40	80	24	44		84	604	818	

CARLA DWERNICHUK, B.S.A., P.Ag.
 Nutrition and Production Consultant
 Moosomin Feed Plant

P. O. Box 859
 806 Park Avenue
 Moosomin, SK
 S0G 3N0 Canada
www.fcl.ca

Phone (306) 435-3331
 Fax (306) 435-3766
 Cell (306) 621-8651
c.dwernichuk@fcl.ca

Kim DeCorby
 Sales Representative



Box 1029
 Balcarres, SK, Canada S0G 0C0
 Tel 306-334-2222
 Fax 306-334-2262
 Cell 306-331-9234
kim_decorby@cargill.com
www.cargillag.ca


Dean & Ashten Douhaniuk
 Pearl Creek Ag Ltd.



Please give Dean or Ashten a call to discuss the Pioneer® brand seed products that will work for your operation. Offering a line-up of premium seed for:

CANOLA • CORN • SOYBEANS • ALFALFA • FORAGE

pearlcreekag@plantpioneer.com
 (306) 720-0324



LEMBERG BUILDING SUPPLIES LTD.
 Box 310
 Lemberg, Sask.
 (306) 335-2222

**Jack, Gary,
 James, Brenda**

• Arctic Cat Snowmobiles
 • Arcticwear • Arctic Accessories

PARKWOOD...

Lot 47



R B Active Duty 0010X



Parkwood Active Duty 41C

Lot 47 1857992 WHBA 41C 15/01/2015 Male

EPD	BW	WW	YW	Milk	TM	ACC	BW	WW	365
3.4	62	120	23	54		93	910	1463	

LCC NEW STANDARD AMF NHF CAF DDC OHF
R B ACTIVE DUTY 0010X 1776360 AMF NHF DDF CAF
 B A LADY 6807 305

S A V HERITAGE 6295 AMF NHF CAF DDF
PARKWOOD QUEEN ALICE 16X 1562038
 QUEEN ALICE OF PARKWOOD 45M

BON VIEW NEW DESIGN 1407 AMF NHF CAF DDC OHF
 LCC SUNSET K3118 NHF AMF CAF DDF OHF
 VERMILION DATALINE 7078 AMF NHF CAF DDF OHF
 G D LADY HI FLYER 302
 CAR DUKE 104
 S A V BLACKCAP MAY 4136 CAF
 CRESCENT CREEK LEGEND 148G
 QUEEN ALICE OF PARKWOOD 18D

Active Duty is known for his explosive growth from birth to weaning. 41C has power, stature and thickness that is in high demand in the cattle business. His Heritage dam is a feminine, heavy milking cow raising another herd bull prospect. A maternal brother sold to Thad Trefiak at our 2015 sale.

Lot 48



Lot 49



Parkwood Active Duty 30C

Lot 48 1857956 BJA 30C 12/01/2015 Male

LCC NEW STANDARD AMF NHF CAF DDC OHF
R B ACTIVE DUTY 0010X 1776360 AMF NHF DDF CAF
 B A LADY 6807 305

CAR TANK 226
SOO LINE PRINCESS 8206 1438347
 SOO LINE PRINCESS 6169

BON VIEW NEW DESIGN 1407 AMF NHF CAF DDC OHF
 LCC SUNSET K3118 NHF AMF CAF DDF OHF
 VERMILION DATALINE 7078 AMF NHF CAF DDF OHF
 G D LADY HI FLYER 302
 CAR TRACKER 904
 C A R IDEAL PRIME LADY 515
 CUDLOBE YELLOWSTONE 80M
 KENBERT CHIEF PRINCESS 47N

EPD	BW	WW	YW	Milk	TM	ACC	BW	WW	365
3.7	58	106	25	54		92	908	1412	

Here is a true stock bull with thickness, muscle, volume and performance. SOO Line Princess is a moderate framed, easy doing female that never misses, with two bulls selling in previous sales to Don Wasylyshen and Reg Rasmussen.

Parkwood Active Duty 5C

Lot 49 1858045 WHBA 5C 02/01/2015 Male

LCC NEW STANDARD AMF NHF CAF DDC OHF
R B ACTIVE DUTY 0010X 1776360 AMF NHF DDF CAF
 B A LADY 6807 305

HARB PENDLETON 765 J H AMF NHF CAF DDF OHF
PARKWOOD MISS MORRISON 11X 1561806
 MISS MORRISON OF PARKWOOD 1K

BON VIEW NEW DESIGN 1407 AMF NHF CAF DDC OHF
 LCC SUNSET K3118 NHF AMF CAF DDF OHF
 VERMILION DATALINE 7078 AMF NHF CAF DDF OHF
 G D LADY HI FLYER 302
 S A V FINAL ANSWER 0035 AMF NHF CAF DDF OHF
 H A R B BLACK LADY 375 J H
 WINDY WILLOWS STOCKADE 91G
 MISS MORRISON OF BRYNTERION 6Z

EPD	BW	WW	YW	Milk	TM	ACC	BW	WW	365
1.1	55	94	23	51		89	893	1260	

Another Active Duty son with size, length, muscle and structural correctness. This Pendleton dam is impressive in that she offers calving ease without sacrificing extra body and performance. Past maternal brother sold to Sandy Slough Acres.



Parkwood **Active Duty** 29C

Lot 50 1857955 BJA 29C 11/01/2015 Male

LCC NEW STANDARD AMF NHF CAF DDC OHF
R B ACTIVE DUTY 0010X 1776360 AMF NHF DDF CAF
 B A LADY 6807 305

MVF VRD DATELINE 5M
PARKWOOD ERICA 7U 1445244
 ERICA OF BRYNTERION 7K

BON VIEW NEW DESIGN 1407 AMF NHF CAF DDC OHF
 LCC SUNSET K3118 NHF AMF CAF DDF OHF
 VERMILION DATELINE 7078 AMF NHF CAF DDF OHF
 G D LADY HI FLYER 302
 VERMILION DATELINE 7078 AMF NHF CAF DDF OHF
 MVF LADY ANNE 30F
 EVERBLACK MASTERPLAN 16F
 ERICA OF BRYNTERION 4C

EPD	BW	WW	YW	Milk	TM
1.3	53	100	21	47	

ACC	BW	WW	365
90	792	1305	

Active Duty is proving you can breed thick, muscular, efficient and easy fleshing cattle that are moderate in birthweight. 29C's dam is a moderately framed cow with a perfect snug udder and feet.



Parkwood **Double Vision** 12C

Lot 51 1857977 WHBA 12C 04/01/2015 Male

CONNEALY REFLECTION AMF NHF CAF DDF OHF
JINDRA DOUBLE VISION 1764385 AMF CAF DDF NHF
 HOFF RACHEL 8312 405

MVF VRD DATELINE 5M
PARKWOOD JOYCE 103S 1365143
 JOYCE OF PARKWOOD 13K

BON VIEW NEW DESIGN 878 AMF NHF CAF DDF OHF
 HAPPY GRILL OF CONANGA 6260
 HOFF LIMITED EDITION SC 594 CAF AMF NHF DDF OHF
 HOFF MISS EXPO S C 4223
 VERMILION DATELINE 7078 AMF NHF CAF DDF OHF
 MVF LADY ANNE 30F
 WINDY WILLOWS STOCKADE 91G
 JOYCE WINNIE OF PARKWOOD 5G

EPD	BW	WW	YW	Milk	TM
2.2	56	105	20	48	

ACC	BW	WW	365
89	916	1358	

12C is as long as a freight train and would be an ideal fit for use on smaller framed cows that need more growth and pounds while maintaining a moderate birth weight. This massive ten year old dam sports a nice udder and has had two bulls sell at past sales to Rowan Brothers and Tim Olson.



Jindra **Double Vision**



EPD	BW	WW	YW	Milk	TM
2.4	56	104	24	52	

ACC	BW	WW	365
93	904	1445	

Look to Double Vision when pounds pay. He sires high performance, heavy weaning progeny that has him in the top 5% of the breed for weaning and top 2% for yearling weight. 47C has been on our radar since birth. He is stylish, thick and heavy muscled in a perfect structured package. His elite seven year old Density dam displays striking style and a perfect udder. She has had five calves with an average ratio of 107. We have sold a maternal son to Owen Salisbury and a sister to Circle Bar Ranch at previous sales.

Parkwood **Double Vision** 47C

Lot 52 1857993 WHBA 47C 18/01/2015 Male

CONNEALY REFLECTION AMF NHF CAF DDF OHF
JINDRA DOUBLE VISION 1764385 AMF CAF DDF NHF
 HOFF RACHEL 8312 405

S A V 004 DENSITY 4336 AMF NHF CAF DDF (EE) S A V MAY 7238 CAF DDF
PARKWOOD WILLA QUEEN 204W 1505947
 WILLA QUEEN OF PARKWOOD 42M

BON VIEW NEW DESIGN 878 AMF NHF CAF DDF OHF
 HAPPY GRILL OF CONANGA 6260
 HOFF LIMITED EDITION SC 594 CAF AMF NHF DDF OHF
 HOFF MISS EXPO S C 4223
 S A V 8180 TRAVELER 004 AMF NHF CAF DMF DWF OSF DDF
 WINDY WILLOWS STOCKADE 91G
 WILLA QUEEN OF PARKWOOD 6G

PARKWOOD...

Lot 53



Parkwood **Max** 8C

Lot 53 1858047 WHBS 8C 03/01/2015 Male

SCOTCH CAP AMF NHF CAF DDF OHF
G T MAXIMUM 690529 AMF NHF CAF DDF OHF
 GT MISS TRAVELER 58

S A V LEWIS 8373 CAF
PARKWOOD MISS HAPPY 34X 1561809
 OTA MISS HAPPY 75N

P S POWER PLAY
 HOFF BAND 07 OF S C 509
 Q A S TRAVELER 23-4 AMF NHF CAF DDF OHF
 G T EVERGREEN 312
 S A V 8180 TRAVELER 004 AMF NHF CAF DMF DWF OSF DDF
 S A V BESSIE HEIRESS 1184 CAC
 V A F HAPPY OSCAR 57
 VALLEY RIDGE ELBA 4Y

EPD	BW	WW	YW	Milk	TM	ACC	BW	WW	365
3.5	45	81	12	36		93	861	1336	

Here's some older genetics that worked well with 34X. He has as much presence, power and performance as you can find in any bull who will pass on the ability to his progeny to push the scales down. 34X is a moderate easy fleshing Lewis daughter that is leaving a lasting impression on our herd. A maternal brother sold to Bryan Stadnyk at our 2015 sale.

Lot 54



Parkwood **Max** 7C

Lot 54 1884571 BJA 7C 02/01/2015 Male

SCOTCH CAP AMF NHF CAF DDF OHF
G T MAXIMUM 690529 AMF NHF CAF DDF OHF
 GT MISS TRAVELER 58

REMINGTON COPENHAGEN 137R
PARKWOOD TIBBIE 35W 1505472
 PARKWOOD TIBBIE 053R

P S POWER PLAY
 HOFF BAND 07 OF S C 509
 Q A S TRAVELER 23-4 AMF NHF CAF DDF OHF
 G T EVERGREEN 312
 SCA 3299 OF IDEAL 1418
 ISLA BANK PRIDE 40M
 BOYD NEW DAY 8005 AMF NHF CAF DDF OHF
 MVRB TIBBIE 81F

EPD	BW	WW	YW	Milk	TM	ACC	BW	WW	365
3.5	45	85	14	36		93	827	1270	

Here is a long bodied bull full of power and value. His Tibbie grand dam is a maternal force as we have retained numerous daughters that are active in our herd.

Lot 55



Parkwood **Cedar Ridge** 10C

Lot 55 1857975 WHBA 10C 03/01/2015 Male

COLE CREEK BLACK CEDAR 46P
COLE CREEK CEDAR RIDGE 1V 1659099 AMF CAF NHF DMF DWF DDF
 COLE CREEK CLOVANADA 49S

MVF VRD DATELINE 5M
PARKWOOD QUEEN 73X 1562060
 QUEEN OF PARKWOOD 19L

C H QUANTUM 6247
 COLE CREEK CLOVA JUANADA 67
 HBR ENCORE 0544
 COLE CREEK CLOVANADA 709
 VERMILION DATELINE 7078 AMF NHF CAF DDF OHF
 MVF LADY ANNE 30F
 BROOKMORE SUCCEED 117F
 QUEEN WINNIE OF PARKWOOD 273X

EPD	BW	WW	YW	Milk	TM	ACC	BW	WW	365
1.8	43	76	22	44		90	897	1332	

10C is a calving ease bull with thickness, expressive muscle and balance. He will offer mating flexibility as he can be used on heifers and then graduate to the cow herd making a powerful herd sire. Cedar Ridge females are noted for their excellent udders and foot structure.

Cole Creek **Cedar Ridge** 1V



Parkwood Cedar Ridge 38C

Lot 56 1858055 WHBS 38C 13/01/2015 Male

COLE CREEK BLACK CEDAR 46P
COLE CREEK CEDAR RIDGE 1V 1659099 AMF CAF NHF DMF DDF
 COLE CREEK CLOVANADA 49S
 MVF VRD DATELINE 5M
PARKWOOD EPPONIA 12R 1297838
 EPPONIA OF PARKWOOD 2K
 C H QUANTUM 6247
 COLE CREEK CLOVA JUANADA 67
 HBR ENCORE 0544
 COLE CREEK CLOVANADA 709
 VERMILION DATELINE 7078 AMF NHF CAF DDF OHF
 MVF LADY ANNE 30F
 WINDY WILLOWS STOCKADE 91G
 2J EPPONIA 13A

EPD	BW	WW	YW	Milk	TM	ACC	BW	WW	365
0.4	45	83	23	46		88	812	1346	

38C is a thick, deep, moderate framed bull full of red meat. He also can be used on cows and heifers. He has an impressive 365 day index of 108. Cedar Ridge's progeny are known for their docility and for their ability to maintain condition in tough environments.



Parkwood Significant 36C

Lot 57 1857988 WHBA 36C 12/01/2015 Male

CONNEALY CONSENSUS 7229 CAF DDF AMF NHF
EXAR SIGNIFICANT 1769B 1707960 CAF AMF DDF
 SITZ HENRIETTA PRIDE 643T
 MVF UPWARD 236X
PARKWOOD HEATHER 2Z 1681019
 PARKWOOD HEATHER 53X
 CONNEALY CONSENSUS DDF
 BLUE LILLY OF CONANGA 16 CAF
 CONNEALY ONWARD AMF NHF CAF DDF
 SITZ HENRIETTA PRIDE 81M
 SITZ UPWARD 307R AMF NHF CAF DMF DDF
 MVF ELLEN 112S
 CRESCENT CREEK SUPER X 91S
 PARKWOOD HEATHER 130U

EPD	BW	WW	YW	Milk	TM	ACC	BW	WW	365
0.7	53	92	16	43		82	792	1292	

Here is a moderate birth weight bull that packs a punch with a weaning weight of 792 pounds and a 365 day weight of 1292. He is a smooth fronted, attractive calving ease bull. His four year old Upward dam is a modest sized cow with an impeccable udder.



Exar **Significant** 1769B



Parkwood Significant 27C

Lot 58 1857985 WHBA 27C 10/01/2015 Male

CONNEALY CONSENSUS 7229 CAF DDF AMF NHF
EXAR SIGNIFICANT 1769B 1707960 CAF AMF DDF
 SITZ HENRIETTA PRIDE 643T
 REMINGTON COPENHAGEN 137R
PARKWOOD QUEEN 112X 1562071
 PARKWOOD QUEEN 22R
 CONNEALY CONSENSUS DDF
 BLUE LILLY OF CONANGA 16 CAF
 CONNEALY ONWARD AMF NHF CAF DDF
 SITZ HENRIETTA PRIDE 81M
 SCA 3299 OF IDEAL
 ISLA BANK PRIDE 40M
 CRESCENT CREEK QUANTUM 142M
 PARKWOOD QUEEN 12N

EPD	BW	WW	YW	Milk	TM	ACC	BW	WW	365
1.6	48	86	17	41		91	793	1280	

Here's another easy doing Significant son with ease of flesh and a thick butt end. He had an average daily gain of 3.97 pounds.



PARKWOOD...



Parkwood Final Answer 75C

Lot 59 1857962 BJA 75C 27/01/2015 Male

S A V FINAL ANSWER 0035 AMF NHF CAF DDF
BAR D K ANSWER 20'11 1638068
 BAR D K BARANDA 22'09
 HF KODIAK 123Y
PARKWOOD BLACKBIRD 75A 1735911
 PARKWOOD BLACKBIRD 92Y

SITZ TRAVELER 8180 AMF NHF CAF DDF
 S A V EMULOUS 8145 CAF
 BEVERLY HILLS FANDANGO 404
 BAR DK BARANDA 2'06
 HF KODIAK 5R MAF AMF NHF CAF DDF OHF
 2HR TIBBIE 30R
 SITZ UPWARD 307R AMF NHF CAF DMF DDF
 MVF BLACKBIRD 346R

EPD	BW	WW	YW	Milk	TM	ACC	BW	WW	365
3.4	58	109	26	56		89	900	1633	

75C is a high performance herd sire prospect out of a first calf heifer. He absolutely crushed the scales with a weaning weight of 899 pounds and a 365 day adjusted weight of 1633! A birth weight of 89 pounds combined with a daily gain of 4.91 pounds should make his progeny highly profitable in any situation.



Parkwood Hoover Dam 17C

Lot 60 1857978 WHBA 17C 05/01/2015 Male

HOOVER DAM AMF NHF CAF DDF OHF
SANDPOINT J EDGAR HOOVER 1764467 AMF CAF DDF NHF
 SANDPOINT PROUD FORMERA 0128
 JL YOUNG PRO 9003
PARKWOOD JOANNA 80A 1735846
 PARKWOOD JOANNA 85T

SYDGEN C C & 7 AMF NHF CAF DDF OHF
 ERICA OF ELLSTON C124
 S A V BISMARCK 5682 AMF NHF CAF DDF OHF
 SANDPOINT PROUD FORMERA 8837 AMF
 S A V YOUNG JOCK 6457 CAF
 JL LADY 07043
 BROOKMORE BANDO 5175 145P
 JOANNA OF PARKWOOD 85J

EPD	BW	WW	YW	Milk	TM	ACC	BW	WW	365
1.0	44	85	22	44		85	747	1395	

17C is a stout, deep ribbed beef bull with an easy fleshing appearance for a calving ease bull. Hoover will add stoutness and calving ease. 80A did well raising her first calf with a 365 day weight of 1359 and a daily gain of 4.35 pounds.



Parkwood Tiger 97C

Lot 61 1858020 WHBA 97C 02/02/2015 Male

HF TIGER 5T CAF NHF AMF OSF DDF OHF
PARKWOOD TIGER 5A 1764922
 MVF ELLEN 634T
 S A V LEWIS 8373 CAF
PARKWOOD HEATHER DALE 69A 1735844
 PARKWOOD HEATHER DALE 014T

HF KODIAK 5R MAF AMF NHF CAF DDF OHF
 HF ECHO 84R
 CONNEALY FREIGHTLINER AMF NHF CAF DDF
 MVF ELLEN 26N
 S A V 8180 TRAVELER 004 AMF NHF CAF DMF OSF DDF OHF
 S A V BESSIE HEIRESS 1184 CAC
 BOYD NEW DAY 8005 AMF NHF CAF DDF OHF
 PARKWOOD HEATHER DALE 14P

EPD	BW	WW	YW	Milk	TM	ACC	BW	WW	365
3.4	52	83	26	53		88	825	1330	

This is a lighter birth weight bull out of a first calf heifer that will work well on heifers. 97C's sire has been used extensively and successfully on our own heifers for the past two calving seasons. He is a smooth fronted, thick topped bull that still has enough performance to have a 205 day weight of 799 pounds. We think 69A has a bright future ahead of her in our herd.

Parkwood **Motive** 25C

Lot 62 1858052 WHBS 25C 09/01/2015 Male

HF KODIAK 5R MAF AMF NHF CAF DDF
SOO LINE MOTIVE 9016 1504907
 TLA BEAUTY 5R

REMINGTON COPENHAGEN 137R
PARKWOOD MISS MORRISON 25W 1505484
 MISS MORRISON OF PARKWOOD 1K

SANDY BAR ADVANTAGE 43M DDF
 WILBAR RUBY 955N
 RR 7407 RAINMAKER 2154
 TERRLENE BEAUTY 35F
 SCA 3299 OF IDEAL 1418
 ISLA BANK PRIDE 40M
 WINDY WILLOWS STOCKADE 91G
 MISS MORRISON OF BRYNTERION 6Z

EPD	BW	WW	YW	Milk	TM	ACC	BW	WW	365
0.9	39	76	20	40		88	780	1301	

Motive is known for his proven ability to sire low birth weight, attractive designed offspring with muscle and power. His daughters are known to be uniform, correct and broody while his sons are consistent and have perfect feet.



Soo Line **Motive**



Parkwood **Motive** 20C

Lot 63 1858051 WHBS 20C 07/01/2015 Male

HF KODIAK 5R MAF AMF NHF CAF DDF
SOO LINE MOTIVE 9016 1504907
 TLA BEAUTY 5R

S A NEUTRON 377 AMF NHF CAF DDF
PARKWOOD LAWN 82S 1359344
 CRESCENT CREEK LAWN 82K

SANDY BAR ADVANTAGE 43M DDF
 WILBAR RUBY 955N
 RR 7407 RAINMAKER 2154
 TERRLENE BEAUTY 35F
 S A F NEUTRON AMF NHF CAF DDF
 S A QUEEN SUSAN 102
 MVF SIRLOIN 18H
 CRESCENT CREEK LAWN 109H

EPD	BW	WW	YW	Milk	TM	ACC	BW	WW	365
1.1	45	79	20	43		88	824	1238	

20C shows how Motive is remarkably consistent in his moderate birthweight and high growth offspring as these two motive sons are like two peas in a pod. His elite Neutron dam has produced many top bulls with pat sons selling to Jon Krause and Irvin Gulash.



Parkwood **Kodiak** 4C

Lot 64 1858046 WHBS 4C 02/01/2015 Male

HF KODIAK 5R MAF AMF NHF CAF DDF
HF KODIAK 123Y 1627488
 2HR TIBBIE 30R

MVF VRD DATELINE 5M
PARKWOOD PROUD LASSIE 49W 1505487
 OTA SCHROEDER 132L

SANDY BAR ADVANTAGE 43M DDF
 WILBAR RUBY 955N
 S A F FOCUS OF E R AMF NHF CAF DDF
 HF TIBBIE 66L
 VERMILION DATELINE 7078 AMF NHF CAF DDF OHF
 MVF LADY ANNE 30F
 V A F HAPPY OSCAR 57
 SCHROEDER PROUD LASSIE

EPD	BW	WW	YW	Milk	TM	ACC	BW	WW	365
1.4	42	75	19	43		85	851	1295	

Here is a moderate birth weight bull that packs a punch. He has a 365 day index of 107. His dam is a clean fronted, feminine, deep made cow with a perfect udder.



HF **Kodiak** 5R



PARKWOOD...

Lot 65



Parkwood **Kodiak** 32C

Lot 65 1857986 WHBA 32C 11/01/2015 Male

HF KODIAK 5R MAF AMF NHF CAF DDF
HF KODIAK 123Y 1627488
 2HR TIBBIE 30R

S A V LEWIS 8373 CAF
PARKWOOD HEATHER JOY 57Y 1620028
 HEATHER JOY OF PARKWOOD 7M

SANDY BAR ADVANTAGE 43M DDF
 WILBAR RUBY 955N
 S A F FOCUS OF E R AMF NHF CAF DDF
 HF TIBBIE 66L
 S A V 8180 TRAVELER 004 AMF NHF CAF DMF DMF OSF DDF OHF
 S A V BESSIE HEIRESS 1184 CAC
 SAF SIDEKICK 36J
 HEATHER JOY OF PARKWOOD 7J

EPD	BW	WW	YW	Milk	TM	ACC	BW	WW	365
3.1	54	92	21	48		93	893	1407	

32C comes out of a line of cows that can be traced back for more than 40 years in our herd. Kodiak's daughters are easy fleshing with perfect udders and are the kind to build a program around.

Lot 66



Parkwood **Kodiak** 61C

Lot 66 1858002 WHBA 61C 23/01/2015 Male

HF KODIAK 5R MAF AMF NHF CAF DDF
HF KODIAK 123Y 1627488
 2HR TIBBIE 30R

S A V LEWIS 8373 CAF
PARKWOOD HEATHER DALE 34Y 1620019
 PARKWOOD HEATHER DALE 140T

SANDY BAR ADVANTAGE 43M DDF
 WILBAR RUBY 955N
 S A F FOCUS OF E R AMF NHF CAF DDF
 HF TIBBIE 66L
 S A V 8180 TRAVELER 004 AMF NHF CAF DMF DMF OSF DDF OHF
 S A V BESSIE HEIRESS 1184 CAC
 BOYD NEW DAY 8005 AMF NHF CAF DDF OHF
 HEATHER DALE OF PARKWOOD 14J

EPD	BW	WW	YW	Milk	TM	ACC	BW	WW	365
3.5	49	87	21	45		94	786	1287	

Kodiak breeds true and his consistency in unparalleled. 61C is a prime example of his ability to stamp thickness and pounds into his progeny.

Lot 67



Parkwood **Kodiak** 22C

Lot 67 1857980 WHBA 22C 08/01/2015 Male

HF KODIAK 5R MAF AMF NHF CAF DDF
HF KODIAK 123Y 1627488
 2HR TIBBIE 30R

S A V HERITAGE 6295 AMF NHF CAF DDF OHF
PARKWOOD ALICIA 10X 1562035
 PARKWOOD ALICIA 31L

SANDY BAR ADVANTAGE 43M DDF
 WILBAR RUBY 955N
 S A F FOCUS OF E R AMF NHF CAF DDF
 HF TIBBIE 66L
 CAR DUKE 104
 S A V BLACKCAP MAY 4136 CAF
 BROOKMORE SUCCEED 117F
 ALICIA WIN OF PARKWOOD 10G

EPD	BW	WW	YW	Milk	TM	ACC	BW	WW	365
1.9	41	71	19	41		89	762	1173	

22C is a deep made, heavy muscled, moderate birth weight herdsire in the making. His Heritage dam is one of our most powerful cows in the herd, consistently raising calves that weigh up and pay up.

FARRELL
 AGENCIES LTD.



Bus: (306) 783-4477 Fax: (306) 786-7577
 Toll Free: 1-800-268-3675

Website: www.farrellagencies.com
 email: farrellagencies@sasktel.net

Committed to You & Your Community



306-188-2767

25 Myrtle Ave.
 Yorkton, SK
 S3N 4G5

PARKWOOD FEMALES...

Parkwood Miss Happy 18C

Lot 68 1858049 WHBS 18C 06/01/2015 Female

HF KODIAK 5R MAF AMF NHF CAF DDF
SOO LINE MOTIVE 9016 1504907
 TLA BEAUTY 5R

REMINGTON COPENHAGEN 137R
PARKWOOD MISS HAPPY 22W 1505483
 OTA MISS HAPPY 75N

SANDY BAR ADVANTAGE 43M DDF
 WILBAR RUBY 955N
 RR 7407 RAINMAKER 2154
 TERRLENE BEAUTY 35F
 SCA 3299 OF IDEAL 1418
 ISLA BANK PRIDE 40M
 V A F HAPPY OSCAR 57
 VALLEY RIDGE ELBA 4Y

EPD	BW	WW	YW	Milk	TM	ACC	BW	WW	365
4.1	52	84	19	44		97	669	848	

This heifer catches your eye with her deep made body and also exhibits an excellent combination of maternal traits and femininity from her mother. Her dam has raised many great calves over the years including a 4H heifer project and a bull selling to Stachura Farms at a previous sale.

Lot 68



Parkwood Heroine 34C

Lot 69 1857957 BJA 34C 12/01/2015 Female

LCC NEW STANDARD AMF NHF CAF DDC OHF
R B ACTIVE DUTY 0010X 1776360 AMF NHF DDF CAF
 B A LADY 6807 305

BROOKMORE BANDO 5175 145P
PARKWOOD HEROINE 160U 1445231
 CRESCENT CREEK HEROINE 160P

BON VIEW NEW DESIGN 1407 AMF NHF CAF DDC OHF
 LCC SUNSET K3118 NHF AMF CAF DDF OHF
 VERMILION DATELINE 7078 AMF NHF CAF DDF OHF
 G D LADY HI FLYER 302
 S A F 598 BANDO 5175 AMF CAC DDF
 BROOKMORE TIBBIE 94K
 CRESCENT CREEK REVIVAL 06J
 CRESCENT CREEK HEROINE 62J

EPD	BW	WW	YW	Milk	TM	ACC	BW	WW	365
4.0	55	96	20	49		88	620	761	

This heifer is built to last. She is deep bodied with great feet and legs. This girl is bound to make an impact in anyone's herd.

Lot 69



Parkwood Heather Dale 39C

Lot 70 1857991 WHBA 39C 14/01/2015 Female

SITZ UPWARD 307R AMF NHF CAF DDF DMF
MVF UPWARD 236X 1550744
 MVF ELLEN 112S

BOYD NEW DAY 8005 AMF NHF CAF DDF
PARKWOOD HEATHER DALE 014T 1395297
 PARKWOOD HEATHER DALE 14P

CONNELLY ONWARD AMF NHF CAF DDF DMF
 SITZ HENRIETTA PRIDE 81M
 G A R GRID MAKER AMF NHF CAF DDF
 MVF ELLEN 48N
 A A R NEW TREND
 S V F FOREVER LADY 57D
 S A NEUTRON 377 AMF NHF CAF DDF
 HEATHER DALE OF PARKWOOD 14J

EPD	BW	WW	YW	Milk	TM	ACC	BW	WW	365
2.7	52	113	23	49		88	589	991	

This heifer is an attractive daughter out of our MVF Upward bull. Upward has left many sound, productive cows in our herd and this girl is no exception!

Lot 70



MNP
 LLP

Brian G. Loos
 Agricultural and Business Advisor
 Box 2590
 2424 Westwood Drive
 Humboldt, SK S0K 2A0
 P: 306.682.2673 ext. 7554
 C: 306.621.9099
 F: 306.682.5910
 E: brian.loos@mnp.ca
 MNP.ca

ACCOUNTING > CONSULTING > TAX

MK HOLDINGS INC.

HAIL INSURANCE AGENT

JIM MORRISON

HOME: (306)783-5980

CELL: (306)621-7873

PARKWOOD FEMALES...

Lot 71



Parkwood Sami Lass 60C

Lot 71 1858003 WHBA 60C 23/01/2015 Female

HF KODIAK 5R MAF AMF NHF CAF DDF HF KODIAK 123Y 1627488 2HR TIBBIE 30R S CHISUM 6175 AMF NHF CAF DDF OHF PARKWOOD SAMI LASS 11Y 1620006 PARKWOOD SAMI LASS 12T						SANDY BAR ADVANTAGE 43M DDF WILBAR RUBY 955N S A F FOCUS OF E R AMF NHF CAF DDF HF TIBBIE 66L S ALLIANCE 3313 AMF S GLORIA 464 BLACKTOF T BANDOLIER 5M SAMI LASS OF PARKWOOD 12J			
EPD	BW	WW	YW	Milk	TM	ACC	BW	WW	365
2.6	50	84	20	46		85	646	888	

This heifer impressed us with her natural thickness, length and class.

Lot 72



Parkwood Tibbie 86C

Lot 72 1858017 WHBA 86C 30/02/2015 Female

S A V BULLET 0473 AMF CAF NHF OSF JL AMMO 2082 1667990 JL RALLEY MISSIE 8202 SITZ UPWARD 307R AMF NHF CAF DMF DDF PARKWOOD TIBBIE 11Z 1705180 MVF TIBBIE 813P						S A V BISMARCK 5682 AMF NHF CAF DDF S A V EMBLYNETTE 7566 CAF B C C-J C L EMBLAZON 038-287 FREYBURN RALLY MISSIE 20J CONNEALY ONWARD AMF NHF CAF DDF DMF SITZ HENRIETTA PRIDE 81M GDAR SVF TRAVELER 234D AMF NHF CAF DDF OHF MVF TIBBIE 52F			
EPD	BW	WW	YW	Milk	TM	ACC	BW	WW	365
1.5	51	94	25	52		78	679	960	

86C is a moderately framed, easy fleshing heifer with lots of thickness and middle. This heifer has the potential to become a real cow factory. Her dam is one of five embryos we purchased from MVF farms and all of the females are working in our herd.

Yorkton Ag & Auto Supply

Bryce & Della Arnold
Owners / Operators

Box 100 • 552B Broadway St. East
Windsor Centre - Hwy. #10 East
Yorkton, Saskatchewan S3N 2V6

(306) 782-1434
Fax: (306) 783-1415



Kelvin Hawreliuk

Box 32
Sheho, SK
S0A 2T0
306-269-7323
E-mail: fasthorses@sasktel.net

Genex Cooperative, Inc.

A Subsidiary of Cooperative Resources International

Hitching Post

Tom Walsh

17 Betts Avenue
Yorkton, SK
S3N 1M1

Phone: (306) 783-5629
Fax: (306) 783-4629

Email: hitchingpost@sasktel.net

www.hitchingpostyorkton.ca

C.E.T.A. Certified E.T. Facility | Donor Housing | Recipients Available



Dr. Keith Immerkar, D.V.M.

Box 388, Highway 10 East
Swan River, MB R0L 1Z0
f: 204.734.9530
c: 204.734.0720
t: 204.734.4565

swanvalleyvetclinic.com

Lot 73



Musgrave **Aviator**



EPD	BW	WW	YW	Milk	TM
-1.6	50	99	25	53	

ACC	BW	205	365
68	819	1228	

Front pasture dam we acquired at the Agribition Masterpiece sale in 2014 from Poplar Meadows, BC. Maternal sire TC Aberdeen offers calving ease without sacrificing performance, Rosebud is complete with a balanced udder and correct teat placement. Musgrave Aviator, North America's and ABS top calving ease sire ranking in the top 1%, top 10% for yearling weight and milk makes this calf a "bet the ranch" for calving ease performance sire.

Selling 1/2 interest with full possession.

SHR **Aviator** 3C

Lot 73 1870627 SHR 3C 31/01/2015 Male

KOUPALS B&B IDENTITY DDF
MUSGRAVE AVIATOR 1750026 DDF
 MCATL FOREVER LADY 1429-138 DDF
 TC ABERDEEN 759 AMF NHF CAF DDF OHF
PM ROSEBUD 24'13 1734170
 HF ROSEBUD 103Y

SITZ UPWARD 307R AMF NHF CAF DMF DDF
 B&B ERICA 605 DDF OHF
 S A V FINAL ANSWER 0035 AMF NHF CAF DDF OHF
 ALC FOREVER LADY R02S
 C R A BEXTOR 872 5205 608 AMF NHF CAF DDF OHF
 TC BLACKBIRD 4034 CAF
 HF TIGER 5T CAF NHF AMF OSF DDF OHF
 HF ROSEBUD 94P

SHR **International** 7C

Lot 74 1870629 SHR 7C 02/01/2015 Male

S A V HARVESTOR 0338 AMF NHF CAF DDF
S A V INTERNATIONAL 2020 17246650 AMF CAF DDF NHF
 S A V EMBLYNETTE 5483 CAF
 S A V FINAL ANSWER 0035 AMF NHF CAF DDF OHF
RRAR QUEEN RUTH 12Y 1602563
 CRESCENT CREEK QUEEN RUTH 161R
 S A V HERITAGE 6295 AMF NHF CAF DDF OHF
 S A V EMBLYNETTE 7749 CAF
 S A V 8180 TRAVELER 004 AMF NHF CAF DMF OSF DDF OHF
 S A V EMBLYNETTE 7260 CAF
 SITZ TRAVELER 8180 AMF NHF CAF DDF OHF
 S A V EMULOUS 8145 CAF
 GDAR TRAVELER 235
 CRESCENT CREEK QUEEN RUTH 50C

EPD	BW	WW	YW	Milk	TM
2.4	58	89	19	49	

ACC	BW	WW	365
76	807	1166	

7C was part of our show string at Agribition this past fall; words to describe this bull calf, "modern frame with loads of natural thickness, depth!!" Out of a final answer daughter 12Y, once again combining predictable calving ease, performance all in a moderate package. Final Answer is currently the world's most widely used Angus bull and there's a reason why!! If you are looking to moderate your cow herd's frame size, put a checkmark on this guy for SALE DAY!!

Lot 74



S A V **International** 2020



**Canadian Junior
Beef Extreme**

SWAN HILLS...

Lot 75



SHR International 9C

Lot 75 1877760 SHR 9C 11/02/2015 Male

S A V HARVESTOR 0338 AMF NHF CAF DDF OHF
S A V INTERNATIONAL 2020 17246650 AMF CAF DDF NHF
 S A V EMBLYNETTE 5483 CAF
 TGA BLACKMAN 8311U
NORTHERN VIEW RUTH 89Y 1623545
 NORTHERN VIEW RUTH 92U
 S A V HERITAGE 6295 AMF NHF CAF DDF OHF
 S A V EMBLYNETTE 7749 CAF
 S A V 8180 TRAVELER 004 AMF NHF CAF DMF DWF OSF DDF OHF
 S A V EMBLYNETTE 7260 CAF
 GEIS BLACKMAN 224'05
 TGA MS DELEGATE 3145N
 NORTHERN VIEW QUANTUM 82R
 CRESCENT CREEK RUTH 6F

EPD	BW	WW	YW	Milk	TM	ACC	BW	WW	365
2.9	53	114	18	45		80	743	1451	

9C, long bodied and stretch to this bull calf, out of a TGA Blackman going back to Ruth 6F, one of the foundation females at Northern View. Strong maternal and out SAV International, the \$400,000 high seller. Performance package, impressive genetic combination make this guy a winner; you will find him sale day.

Lot 76



SHR True Answer 2C

Lot 76 1892355 SHR 2C 30/01/2015 Male

CONNEALY RIGHT ANSWER 746 AMF NHF CAF DDF OHF
CONNEALY TRUE ANSWER 892 1552447 AMF NHF CAF DDF
 ELSA OF CONANGA 892
 NORTHERN IMPROVEMENT 4480 GF AMF NHF CAF DDF OHF
TRIPLE L MISS DAISY 29U 1472388
 BRANTNOR MISS DAISY 9K
 S A V FINAL ANSWER 0035 AMF NHF CAF DDF OHF
 HAPPY DELL OF CONANGA 262
 CONNEALY MOMENTUM
 EMMA OF CONANGA 6881
 TC STOCKMAN 365 DDF OHF
 BLACKCAP OF R R 5367
 KRUGERRAND OF DONAMERE 490 AMF NHF
 ANGUS GLEN MISS DAISY 22H

EPD	BW	WW	YW	Milk	TM	ACC	BW	WW	365
1.5	53	97	23	50		78	727	1266	

A stylish embryo calf out of the Miss Daisy 29U, the Heifer Champion at the 2008 World Angus Show, whose progeny has found its way into Swanhills Ranch, Wilbar, Eastondale, to name a few. Great hair, deep bodied and take a look at the clean front end this bull exhibits. His sire is "TRUE ANSWER," the numbers are off the chart with a big spread EPD from a BW .9 to YW of 123.

Connealy **True Answer** 892



Lot 77



SHR Payout 19C

Lot 77 1890838 SHR 19C 11/03/2015 Male

CONNEALY CONSENSUS 7229 CAF DDF AMF NHF OHF
RING CREEK BIG PAYOUT 41Z 1701774
 LADY OF RING CREEK 10W
 S A V PIONEER 7301 AMF NHF CAF DDF OHF
MVF GEORGINA 110X 1550239
 MVF GEORGINA 97P
 CONNEALY CONSENSUS DDF
 BLUE LILLY OF CONANGA 16 CAF
 HF TIGER 5T CAF NHF AMF OSF DDF OHF
 RING CREEK BPC AMBUSH 34R
 S A V FINAL ANSWER 0035 AMF NHF CAF DDF OHF
 S A V BLACKBIRD 5297 CAF
 B/R NEW FRONTIER 095 AMF NHF CAF DDF OHF
 MVF GEORGINA 17J

EPD	BW	WW	YW	Milk	TM	ACC	BW	WW	365
1.5	51	89	24	51		78	764	1276	

A low birth weight Payout son, mid-framed possessing shape and depth. His dam, MVF 110X has it all put together stylish and good uddered, she caught my eye and I had to have her!!!

Crew

2015 Agribition

Showing



SHR Best Interest 35C

Lot 78 1890839 SHRX 35C 22/03/2015 Male

S A V BEST INTEREST 0136 AMF CAF NHF DDF
J SQUARE S BEST INTEREST 327A 1749540
 SOO LINE STAR MAIDEN 1064
 RED SSS CACHE 780L
RED SHRX TARA 103T 1543812
 RED FBAR GAZELLA 483M
 S A V BISMARCK 5682 AMF NHF CAF DDF OHF
 S A V EMBLYNETTE 8172 CAF
 SOO LINE YELLOWSTONE 6344
 SOO LINE STAR MAIDEN 9075
 RED SSS BOOMER 803B
 RED SSS DYLAN'S VALENTINE 103C
 RED BAR-E-L AMBUSH 25K
 F BAR GAZELLA 43F (RC)

Sire's	BW	WW	YW	Milk	TM	ACC	BW	WW	365
EPDS	4.0	67	109	29	63		86	784	1374

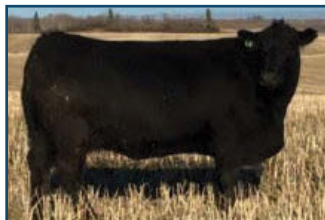
A well put together best interest calf out of a powerful Red Triple SSS Cache daughter. Acquiring the walking rights from Genex on Cache left us an opportunity to select the "best of the best" daughters. In the past, 103T was Martina's 4H project winning Grand Champion Female. 103T packs a mass of depth and "lady like looks" on a modern 1400 pound frame. On the sire side, 327A is one of our walking bulls posting the weaning weight and maternal milk in the top 1%. 327A's sire is the \$45,000 bull bought by Soo Line Cattle Co. back in 2011 from Schaff Angus Valley.



S A V Best Interest 0136



Vision Unanimous 1418



MVF 25X - Donor

EPD	BW	WW	YW	Milk	TM	ACC	BW	205	365
	3.9	64	113	23	55		86	871	N/A

32C, the first offering of our walking sire Peak Dot Unanimous, co-owned with Lorne and Kevin Clelland of Swan River. Unanimous, one of the most widely used Angus bull, offers a complete out-cross pedigree. The steers off this bull tipped the sale this past fall at market. 32C's EPD 's are stacked, boasting a weaning weight EPD at 64 and yearling weight EPD at 113. Strong hip and spring of rib would be "words" to describe this fellow. Brookmore Aleta, daughter of Sitz Upward carries a stack of proven predictability of performance and maternal strength. Jack Hart's Brookmore females have made a contribution to our cow herd; the udders are exceptional and picture perfect. Maternal sire Sitz Upward daughters have been extensively used and proven at our ranch. Our main donor cow MVF 25X a Sitz Upward daughter, her progeny has been sought after with her embryos been sold into Northern England, France, China, and Russia this past year.



SHR Unanimous 32C

Lot 79 1877768 SHRX 32C 24/03/2015 Male

VISION UNANIMOUS 1418 DDF NHF CAF AMF
PEAK DOT UNANIMOUS 523A 1764612
 QUEEN OF PEAK DOT 619U
 S A V 004 PREDOMINANT 4438 AMF NHF CAF DDF OHF
 QUEEN OF PEAK DOT 536N
 CONNEALY ONWARD AMF NHF CAF DDF DMF
 SITZ UPWARD 307R AMF NHF CAF DMF DDF
BROOKMORE ALETA 140Z 1667253
 BROOKMORE ALETA 84W
 VISIONTOPLINE ROYAL STOCKMAN DDF
 VISION EDELLA 665 CAF DDF
 S A V 004 PREDOMINANT 4438 AMF NHF CAF DDF OHF
 QUEEN OF PEAK DOT 536N
 CONNEALY ONWARD AMF NHF CAF DDF DMF
 SITZ HENRIETTA PRIDE 81M
 S A V 004 DENSITY 4336 AMF NHF CAF DDF (EE)
 BROOKMORE ALETA 164N

Canadian Junior
Angus Show



SWAN HILLS...

Lot 80



SHR Unanimous 31C

Lot 80 1877767 SHRX 31C 23/03/2015 Male

VISION UNANIMOUS 1418 DDF NHF CAF AMF
PEAK DOT UNANIMOUS 523A 1764612
 QUEEN OF PEAK DOT 619U

S A V PIONEER 7301 AMF NHF CAF DDF OHF
MVF ELINE 29Z 1660082
 MVF ELINE 22X

VISIONTOPLINE ROYAL STOCKMAN DDF
 VISION EDELLA 665 CAF DDF
 S A V 004 PREDOMINANT 4438 AMF NHF CAF DDF OHF
 QUEEN OF PEAK DOT 536N
 S A V FINAL ANSWER 0035 AMF NHF CAF DDF OHF
 S A V BLACKBIRD 5297 CAC
 GDAR GAME DAY 449 AMF NHF CAF DDF OHF
 MVF ELINE 326T

EPD	BW	WW	YW	Milk	TM	ACC	BW	WW	365
2.0	61	111	22	51		75	841	1404	

Modern frame, natural thickness make up this calf to appeal to the cattlemen's eye. With an EPD profile stacked from top to bottom through all calving and performance traits, 31C offer a very unique genetic package. Outcross pedigree out of a refined and fine-boned pioneer daughter with strengths in the pedigree stacked with GDAR game day and western Widespread.

Lot 81



SHR Unanimous 29C

Lot 81 1877771 SHRX 29C 05/04/2015 Male

VISION UNANIMOUS 1418 DDF NHF CAF AMF
PEAK DOT UNANIMOUS 523A 1764612
 QUEEN OF PEAK DOT 619U

S A V WALL STREET 7091 AMF NHF CAF DDF OHF
SMX BLACKCAP 101W 1671858
 WILP/HAR BLACKCAP 075L

VISIONTOPLINE ROYAL STOCKMAN DDF
 VISION EDELLA 665 CAF DDF
 S A V 004 PREDOMINANT 4438 AMF NHF CAF DDF OHF
 QUEEN OF PEAK DOT 536N
 S A V NET WORTH 4200 AMF NHF CAF DDF OHF
 CHAMPION HILL GEORGINA 2175
 K W C C PACKER 386 M C C
 WILP/HAR BLACKCAP 14C

EPD	BW	WW	YW	Milk	TM	ACC	BW	WW	365
1.4	48	90	19	43		71	772	1396	

Another typical, moderate, well haired, good muscled 327A son that like his brothers will deliver calving ease combined with great end product of heifer and steers sought after in today's livestock market. The dam 101W, acquired from the SEMEX donor group caught my eye at Dr. Immerkar's embryo facility, investigated it and purchased her as a heifer calf. Sired by SAV Wall-street and stacked on the maternal side with WILP/HAR Blackcap, EXT, and Rito. Look for 29C to moderate and offer calving ease.

Lot 82



SHR Unanimous 16C

Lot 82 1877764 SHRX 16C 12/03/2015 Male

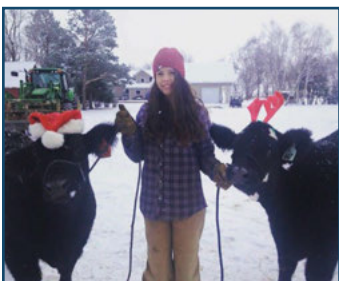
VISION UNANIMOUS 1418 DDF NHF CAF AMF
PEAK DOT UNANIMOUS 523A 1764612
 QUEEN OF PEAK DOT 619U

RRAR FINAL ANSWER 9W
RRAR BANNORA 7Y 1602566
 BANNORA OF PEAK DOT 429R

VISIONTOPLINE ROYAL STOCKMAN DDF
 VISION EDELLA 665 CAF DDF
 S A V 004 PREDOMINANT 4438 AMF NHF CAF DDF OHF
 QUEEN OF PEAK DOT 536N
 S A V FINAL ANSWER 0035 AMF NHF CAF DDF OHF
 MOWAT JAYBIRD 3N
 STEVENSON BRUNO
 BANNORA OF PEAK DOT 594K

EPD	BW	WW	YW	Milk	TM	ACC	BW	WW	365
1.2	48	80	17	41		75	766	1183	

Moderate framed, posting a lightweight birth weight of 75 pounds. Strengths in the pedigree stacked with Final Answer, and Stevenson's Bruno on the maternal sire side of the pedigree. Viewing Stevenson's Bruno back in my employment days with Alta Genetics, I viewed him at Hawkeye test station; he was a great bull to be admired, phenotype, cresting, and leg set were his strong points I remember.



Robyn, Domino & Mickey dressed and ready for Christmas

**SHR Revere 127B
 2015 High Seller
 for Swan Hills**





Limestone Tilt - Maternal Sire to Lots 83 & 84

Limestone Tilt, the maternal sire to the next 3 bulls, a semex bull, Dr. Immerkar and I had walking rights to TILT. He has made us some incredible mothers walking our pastures. Look for moderate frame and maternal strength in these bulls.

Percentage Bulls - $\frac{3}{4}$ Angus & $\frac{1}{4}$ Simmental

SHR Unanimous 11C

Lot 83 SHRX 11C 01/03/2015 Male

VISION UNANIMOUS 1418 DDF NHF CAF AMF
PEAK DOT UNANIMOUS 523A 1764612
QUEEN OF PEAK DOT 619U

VISIONTOPLINE ROYAL STOCKMAN DDF
VISION EDELLA 665 CAF DDF
S A V 004 PREDOMINANT 4438 AMF NHF CAF DDF OHF
QUEEN OF PEAK DOT 536N

33Z - ANGUS/SIMMENTAL

BW	Sept 10/15 WT
78	684

This calf is as eye-catching as you will find, stacked up with outcross pedigree on the sire side, and injecting some hip and shape with a touch of Simmental genetics. Moderate frame, great hair, and phenotypically put together. My two daughters are young discretionary judges and now compete at functions and have selected 11C to the top of their list, who am I to argue! Limestone Tilt, the maternal sire to the next 3 bulls, a semex bull, Dr. Immerkar and I had walking rights to TILT. He has made us some incredible mothers walking our pastures. Look for moderate frame and maternal strength in these bulls.

SHR Unanimous 13C

Lot 84 SHRX 13C 05/03/2015 Male

VISION UNANIMOUS 1418 DDF NHF CAF AMF
PEAK DOT UNANIMOUS 523A 1764612
QUEEN OF PEAK DOT 619U

VISIONTOPLINE ROYAL STOCKMAN DDF
VISION EDELLA 665 CAF DDF
S A V 004 PREDOMINANT 4438 AMF NHF CAF DDF OHF
QUEEN OF PEAK DOT 536N

22Z - ANGUS/SIMMENTAL

BW	Sept 10/15 WT
73	654

Correct and sound, moderate and thick, 13C is the prototypical Peak Dot son. Strong maternal strengths in this calf, out of a moderate 1300 pound cow, boasts a 73 pound birth weight.

SHRX 53C

Lot 85 SHRX 53C 20/04/2015 Male

COLE CREEK BLACK CEDAR 46P
COLE CREEK CEDAR RIDGE 1V 1659099 AMF CAF NHF DMF DWF DDF
COLE CREEK CLOVANADA 49S

C H QUANTUM 6247
COLE CREEK CLOVA JUANADA 67
HBR ENCORE 0544
COLE CREEK CLOVANADA 709

19A - ANGUS/SIMMENTAL

BW	Sept 10/15 WT
74	608

Cedar Ridge has been a proven calve-ease bull. 53C's dam is a moderate, refined, fine-boned dam. 19A was Martina's heifer project in 2014, winning her Reserve Grand Champion at the Canadian Junior Angus Association summer show. Maternal sire goes back to a Wheatland 680S son giving the bull a punch of performance. 53C boasts a birth weight of 74 pounds.
Recommended for heifers.



Cole Creek **Cedar Ridge 1V**



ANGUS INFLUENCE COMMERCIAL HEIFERS



Lot 86 **Two Pens of Five**

Consigned by:
Jeff & Sheri Davis
Roblin, MB

Lot 87 **Pen of Five**

Consigned by
Joe & Ken Scherloski
Gerald, SK

Lot 88 **Three Pens of Three**

Consigned by:
Iron Saddle Ranch
Barb & Richard Krupski
Lemberg, SK

Lot 89 **Pen of Three**

Consigned by:
Rod & Janet Wegner
Ebenezer, SK

Lot 90 **Pen of Three**

Consigned by:
SkyeBrook Angus
Brian & Janet Misselbrook
Choiceland, SK

Lot 91 **Pen of Three**

Consigned by:
Clelland Farms
Swan River, MB

Lot 92 **Pen of Three**

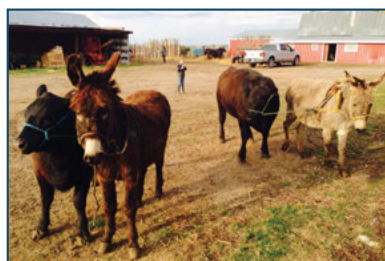
Consigned by:
Dale & Gail Minhinnick
Invermay, SK

Lot 93 **Pen of Three**

Consigned by:
J Square S Angus
Melville, SK

DONKEY AUCTION

Swan hills ranch along with the blue collar group will be donating (Eeyore) along with a breaking halter to be auctioned off with proceeds going to the Canadian junior angus association. Absentee bids welcome, contact any member of the blue collar boys for more details.



TERMS AND CONDITIONS

Breeding Guarantee

All cattle are sound and right, and all with a responsible breeder guarantee of satisfaction. In the event of any unlikely dispute, the regular terms and conditions, standard with the Canadian Angus Association shall apply.

Warranty

Blue Collar consignors guarantee to sell you a bull that is structurally sound and has passed a semen test performed by a licensed veterinarian. Should the bull fail to perform as a satisfactory breeder (unable to service cow or heifer) he will be replaced with a bull of equal value. If this is not possible an adjustment will be made to reflect the value of the bull or a credit will be given towards the purchase of another bull. We guarantee to provide you with a breeding bull for the season. We will not however provide replacement or adjustment for death, physical injury or mismanagement. Claims must be made by September 1 of year of purchase. With this in mind, we cannot stress enough the importance of insurance on your bull purchases.

Insurance

Insurance agents will be available sale day, or you can make other insurance arrangements through you own agent. Insurance must be purchased on all bulls that return to the respective farms.

Sight Unseen Program

Tell us your requirements and we'll select bulls that meet those orders. If you are not 100% satisfied when the trailer is in your yard, you don't own him, no questions asked.

Delivery

The Blue Collar Bull Sale group will assist with delivery where ever possible. Receive a \$50 discount on your bull purchased if you take your bull home the day of or the day after the sale. Free delivery on bulls purchased within a 100 mile radius. Over 100 mile radius, delivery and cost to be worked out between the buyer and the individual consignor to the sale. Bulls returned to the consignor's farm must be insured. The buyer then assumes full responsibility for the bull. Proper care and attention will be given to all bulls returned to the farm. Bulls returning to the consignor's farm will be kept at no charge until May 1 with a cost of \$2/day after May 1. We would ask that the buyers work with us to have all bulls delivered prior to June 1.

Terms of Sale

Cash or cheque at par, payable to Clerks of the sale on sale day, unless prior arrangements have been made. No release will be given until satisfactory settlement has been made.

** All persons who attend the sale do so at their own risk and the owners, sale management and sale staff assume no liability, legal or otherwise, for property loss or for any accidents that may occur.

**Updated Information:
For the most current sale information
visit www.jssangus.com**



BLUE COLLAR BULL SALE
C/O BOX 211
NEUDORF, SK
S0A 2T0



Lot 3



Lot 8



Lot 36



Lot 39



Lot 47



Lot 52



Lot 73



Lot 74

Created By Today's Publishing
PLEASE BRING THIS CATALOGUE WITH YOU TO THE SALE