



25TH ANNUAL
— **MAKIN' THE GRADE** —
BULL SALE



NOVEMBER 30TH, 2021
DLMS FARMGATE TIMED AUCTIONS

B

BENCHMARK[®]

Your Carcass Source

Angus

Friends and Fellow Cattlemen,

How the time flies by! Welcome to our 25th Annual "Makin" the Grade Benchmark[®] Bull Sale. Mike and I appreciate so much our faithful customers and especially those participating in our "buy-back program." This program assures us that we can continue to provide Benchmark[®] Beef to our many beef customers. Mike has had a busy time at the "meat shop," as his son, Lincoln calls it and is completing an expansion.

Since Covid and coupled with the drought, it has been a trying 2021 for all of you and us. Our silage crops were less than a third of 2020 and on a couple of fields, the grasshoppers left us nothing. Do we ever need moisture!!

The bulls were turned out on a fall triticales field after their 75 day GrowSafe Test on April 20th and brought in September 1st. The heat and poor pasture was hard on them.

Our program remains the same, developing efficient cattle that grow, gain and grade. In order to accomplish this, we use every tool possible including measuring each bull individually for ADG and FeedToGain via our GrowSafe pens.

This year, we were recognized for 50 years of continuous membership with the Canadian Angus Association. Mike and I are thankful for the tools that the Association makes available to enable Benchmark[®] in its pursuit of breeding cattle that make the grade. As well this year, I was elected to the Board of the Canadian Angus Association and look forward to serving the membership.

We are proud of the cattle presented to you as we are proud of the cows that graze the Milk River Ridge. We are also very thankful and proud of the team at Benchmark[®]. Dale & Laura mark twenty years at Benchmark[®], Mike & Hailey have been with us three years and we welcome Lane Doud to our team. We know we are very blessed.

With all the issues around us, we are running the on-line DLMS Farm Gate Auction again this year. The bulls will be available for viewing November 15, so be sure to come and take a look.

Again, let me say that Mike and I do appreciate each and every one who we have come to know and are thankful for your ongoing support. We look forward to meeting new buyers also. Do call us if we can help in any way.

Sincerely from the Benchmark[®] team,

Doug Munton 403-328-6966

Michael Munton 403-394-4903

Dale Fehr 403-359-3274

Mike Trainer 403-890-6684

Lane Doud 403-308-4131





Benchmark
Angus



25TH ANNUAL MAKIN' THE GRADE BULL SALE



The Munton Family



Dale and Laura Fehr



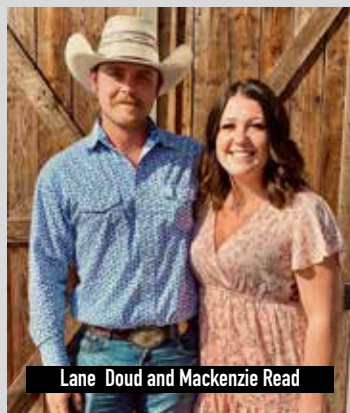
Mike, Daicya, Lincoln and Lexington



Val and Doug Munton



Lincoln and Lexington



Lane Doud and Mackenzie Read



Mike and Hailey Trainer

OUR RANCH - OUR LEGACY

Enan Isaac Munton

Born January 2, 1879

Mary Anne Munton

Born August 18, 1886

Enan joined the army under-age serving in the 134th Battery Royal Horse & Field Artillery. Enan was a very good cricket player. After serving in the army he worked in the coal mines in Wales. They immigrated to Canada in 1912 with Enan working in the mines and then for the city of Lethbridge in Galt Gardens as a gardener.

In about 1915 Enan was granted a homestead East of Champion and they built a shack and moved. Those were very hard times, mining coal all winter and breaking the land and building fences to retain the few cattle they were able to buy with their "coal money". This homestead was the home of Stanley Munton. While on this homestead, Stanley, Doug and Ken developed East Champion Angus Ranch.



Stanley Warren Munton

Born May 16, 1927

Hilda Hilz

Born June 12, 1924

Stanley married Hilda Hilz on October 18, 1946. Hilda's parents gave them two cows as a wedding present which started them in the cattle business. Doug was born to Stan and Hilda July 29, 1947 and Ken on January 27, 1949. After working for a neighbor for the summer of 1960, Doug took his \$300 of earnings and with \$10 from his dad bought a Purebred Angus heifer from Alex Sera of Coalbridge Farms. This was the beginning of the Munton's endeavour into the Purebred Angus business, which continues to this day. Over the years the Munton's had great success breeding the likes of Ben's Big Boy 3'73 and Baros of Alcan Angus 40'73. Stan and Ken dispersed their cattle in 1989. Doug continued raising Angus cattle under the herd name Alcan Angus and now with his son Michael under the herd name Benchmark Angus.

Sadly, we lost Dad (Stan) in July of 2010 and Mother (Hilda) in March of 2020.





ONLINE SALE BY DLMS FARM GATE TIMED AUCTIONS

ON OFFER

42 coming Two-Year-Old Black Angus Bulls
22 coming Two-Year-Old Red Angus Bulls

Sale Day Phones

Doug Munton (403) 328-6966
Mike Munton (403) 394-4903
Mark Shologan (780) 699-5082

Cattle available at the ranch for viewing
November 16 through to sale day.

Semen Interest Retained Benchmark®
Angus retains a one-third semen interest
in every bull selling.

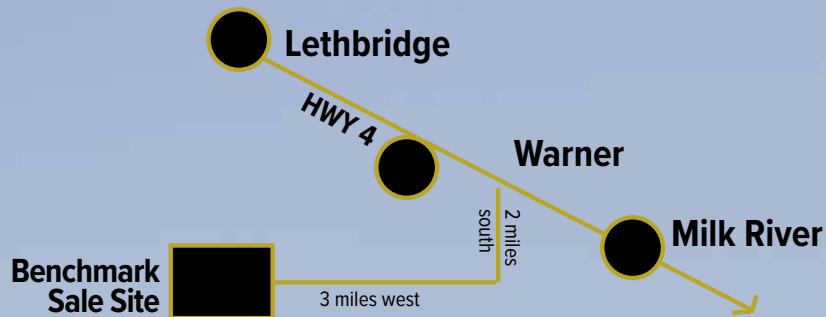


POST SALE

Free feed until December 31, 2021.
Feed at \$3 per day after year end.
Bulls left at the Ranch MUST be insured

STAY CONNECTED

Doug and Mike Munton
Box 997, Lethbridge, AB T1J 4A2
Phone: (403) 328-6966
Cell: (403) 394-4903
Email: doug@muntonco.com
See Catalogue online at
www.benchmarkangus.com



LOCATION:

*Preview cattle November 16 - 30,
at Warner, go west down
Main Street, past the school and at
T intersection, turn left and go two miles
south, then right and go
three miles west.*



HOW THE SALE WORKS!

RACEHORSE STYLE SALE WITH EXTENDED BIDDING.

*First 30 min of Extended Bidding clock adds - 5 Minutes to close
Second 30 min of Extended Bidding clock adds - 3 Minutes to close
After an Hour of Extended Bidding clock adds - 1 Minute to close*



1. Visit <https://farmgatetimedauctions.ca>, click the LOGIN/REGISTRATION button. First time users will select the REGISTER button from this page. Fill out the registration form to sign up for a free user account and it allows you to select a username and password for use on all Farm Gate Timed auctions. This program will send you text and email messages whenever there is activity on your favorite lots or someone challenges your proxy bid and this is why you will be asked for both your current email and cell phone number. If you are a past participant in the Farm Gate Timed auctions simply enter your user name and pass word to continue. This takes you to a list of both current and upcoming Farm Gate Auctions.
2. You can choose your favourite lots in this sale at this time and the program will allow you to open either all sale lots or just your favorite lots on your screen. Any time there is active bidding on a lot you have identified on your favorite list you will get a text and/or an email noting this activity.
3. The program allows you to place a proxy bid on any sale lot. This in fact protects your interest in any lot of interest for you to a specified dollar value you set, when you may not be able to give 100% attention to the sale. If the lot has a \$2000 bid on it and you place a proxy bid of \$3500 into the system, the computer will bid \$2100 for you but if some one else bids \$2200, the computer will again bid for you, this time at \$2300. The system will look after your interest to a maximum of \$3500. If another bidder is on at \$3600, your proxy will no longer be effective and you will no longer have the winning bid on this lot without once again logging in and bidding again or moving your attention to a second lot of interest.
4. At Closing time of the sale the entire sale will extend bidding for 5 minute if a bid is placed on any lot in the sale. Any bid received after 7 PM will extend the sale by 5 minutes from the time of that bid. When no bidding occurs for 5 min the computer will declare the sale finished.
5. Within 24 hours of the sale close the Sale consignor will contact all winning bidders to arrange payment, transfer of pedigrees and delivery/Pick up of your lot.

If you require assistance with using the new DLMS Farm Gate web site, if you don't understand how to create a favorites list, if you can't figure out the proxy bid or you just plain want to bid via phone, please talk to any of the DLMS team or Sale Consignors.

More Info:

What is Racehorse Style Close?

Racehorse style sale close is when the entire sale stays open in extended bidding. This type of sale allows you as the bidder to change to a different lot within the same sale if the bidding has gone into extended bidding.

How will Extended Bidding work?

When we get to the close out end time the clock for close extends with any bid placed with less than 5 min on the clock. This type of extended bidding turns the end time to more of a soft time. Extended bidding allows bidders to compete in lots like a real auction and give all bidders the same time to make a decision. Always follow the clock to see how much time remains in the sale you are interested in.



Benchmark Angus ventured into the beef business out of necessity in 2003. BSE had hit the cattle business and we had no market for the cattle we had proudly produced for generations. Mike started harvesting those cattle that we could not sell otherwise & marketing it to local restaurants & grocery stores.

Through many ups & downs things progressed and we developed a wonderful customer base that are very passionate about our very high quality beef product. In 2015, the opportunity came along to purchase a harvest facility in the heart of cattle feeding country; Picture Butte, AB. On January 1, 2016, we took over the day to day operations of Ben's Quality Meats and we have seen an explosion of the demand in Benchmark Premium Angus Beef.

Today when looking at a ranking for marbling on the 2020 born Black Angus Bulls, listed by the Canadian Angus Association, 3 out of the Top 5 are Benchmark® Bulls. On the Red side 8 out of the Top 10 are Benchmark® Bulls. The pursuit matters; our customers receive the benefit when they are paid well above the market for their Benchmark sired calves. But the beef customer is the real winner when they tell us time after time they never thought beef could taste so good.

Why do we talk about this so much? Because, it matters so much and as we harvest more and more animals, we know we have been on the right track. Dr. Miller has said "At the end of the day, all the best science is for naught if it does not show up in an improvement in cattle on the ranch, in the feedlot and the beef on the consumer's plate."

As we process "Benchmark Beef", as well as commodity beef, the differences clearly come to light. And even in our earlier days, prior to having the predictability in our cattle, some made the grade and others did not. Now, the genetics in an animal tells the tale before the grading stamp goes on.

Our goal is to provide the genetics to our valued customers allowing them to be the most profitable in the business. We need more Benchmark sired cattle to meet the demand. If you are using Benchmark Bulls, we would like to visit about access to their calves and if not using Benchmark Bulls we ask that you consider using them. Be sure your cattle measure up – use a Benchmark Bull!"

Remember, "Pasture to Plate", it is not just an old cliché at Benchmark, we do it every day!

Doug Munton: (403)-328-6966

Michael Munton (403)-394-4903



REFERENCE SIRE

GAR PHOENIX



CAA
GENOMIC
ENHANCED
EPDs

CE
+12.0

BW
+0.9

WW
+86

YW
+155

CW
+86

MARB
+1.19

REA
+1.12

DOC
+23

CBI
+329

PERF	AOD	BW	205D	365D
	ET	72	756	1378

VALUE INDEX	\$W	\$F	\$G	\$B	\$C
	+85	+129	+79	+208	+335
RANKING	5%	2%	2%	1%	1%

CONNELLY IN SURE 8524

SIRE: GAR SURE FIRE

CHAIR ROCK 5050 GAR 8086

G A R PROPHET

Dam: G A R PROPHET N744

G A R DAY BREAK 440

MITTY IN FOCUS

ENTRENA OF CONANGA 657

G A R NEW DESIGN 5050

CHAIR ROCK GRID MAKER 2107

C R A BEXTOR 872

G A R OBJECTIVE 1885

MCC DAYBREAK

G A R YIELD GRADE N76

Phoenix was the Lot 1 bull in the spring Gardiner sale bringing \$130,000. He is a Select Sires Stalwart, featuring top calving ease, early growth and end product merit. His calves at Benchmark® came easy and really do grow, plus have great feet and leg structure. His sons show extra frame and have been readily accepted in the industry.

7 SONS SELL

- Avg. BW: 82 lbs
- Avg. 205D: 619 lbs.
- Avg. 365D: 1362 lbs

SEPTEMBER 2021 EPD RANKING:

Top 1% Weaning Weight
Top 1% Yearling Weight
Top 1% Carcass Weight
Top 1% Marbling & REA
Top 1% Scrotal

Top 3% Calving Ease
Top 6% Residual ADG
Top 6% CDN Balanced Index
Top 15% Docility

BULLS SIRED BY G A R PHOENIX

LOT 1

BENCHMARK PHOENIX 9'20
Male BFL 9H March 31, 2020

2165802



G A R SURE FIRE CONNEALY IN SURE 8524
Sire: G A R PHOENIX CHAIR ROCK 5050 G A R 8086
G A R PROPHET N744 G A R PROPHET
G A R DAYBREAK 440
G A R NEW DESIGN 5050 B/R NEW DESIGN 036
Dam: G A R 5050 NEW DESIGN 2132 G A R PRECISION 706
S S OBJECTIVE T510 OT26
G A R OBJECTIVE 2670 G A R PREDESTINED N408

CARCASS EPD'S:	
MARB	+1.30
REA	+0.83
FAT	+0.019
ACTUAL:	
%IMF	4.86
REA	1.02
RIBFAT	0.39
LMY	60.2%

PERFORMANCE							EPD's					
AOD	BW	205D	365D	ADG	F:G	RFI	CE	BW	WW	YW	RFI	CBI
ET	76	547	1337	5.47	4.02	-0.09	+12.0	+0.2	+65	+133	+0.1303	+346

SEPTEMBER 2021 EPD RANKING:

Top 1% Yearling Weight	Top 1% Marbling	Top 1% Carcass Weight
Top 1% Milk	Top 2% Residual ADG	Top 2% Cdn Balanced Index
Top 3% Calving Ease	Top 4% Ribeye	Top 8% Weaning Weight

From our embryo program. The dam 2132, by 5050 who has near 10,000 progeny analyzed with 3700 daughters in production. 2132 is designated Elite by the Cdn Angus Assoc. with four calves ratioing at 107. These genetics are time tested and proven over and over.



LOT 2

BENCHMARK PHOENIX 12'20
Male BFL 12H April 1, 2020

2159371



G A R SURE FIRE CONNEALY IN SURE 8524
Sire: G A R PHOENIX CHAIR ROCK 5050 G A R 8086
G A R PROPHET N744 G A R PROPHET
G A R DAYBREAK 440
EF PRIME QUARTER 5369 V A R GENERATION 2100
EF RITA 3422
Dam: BENCHMARK ESTER 139'18 N BAR EMULATION EXT
BENCHMARK ESTER 862 THOMAS ESTER 0190

CARCASS EPD'S:	
MARB	+0.88
REA	+0.79
FAT	+0.027
ACTUAL:	
%IMF	5.37
REA	1.20
RIBFAT	0.33
LMY	62.9%

PERFORMANCE							EPD's					
AOD	BW	205D	365D	ADG	F:G	RFI	CE	BW	WW	YW	RFI	CBI
2	80	606	1291	4.37	4.70	-0.22	+6.0	+1.9	+72	+130	+0.2833	+288

SEPTEMBER 2021 EPD RANKING:

Top 1% Yearling Weight	Top 2% Weaning Weight	Top 5% Marbling
Top 6% Ribeye	Top 10% Carcass Weight	Top 30% Cdn Balanced Index

Dam is a Prime Quarter two-year-old, who is out of an EXT daughter. This bull is stout with a bit less frame and lots of scrotal. Remember Prime Quarter sired our high-selling bull in sale XXIV.



COLLEGE
Ford Lincoln
LETHBRIDGE

403.329.0333
3975 1 Ave South, Lethbridge
SALES · SERVICE · PARTS

YOUR TRUCK SUPERSTORE

BUILT TOUGH

Co-operative Limited

DON & COLLEEN SHIMEK
Agents
Shimek Service Ltd

DIRECT 403-732-4224
CELL 403-308-1322
1-877-732-4343

PO Box 657
Picture Butte, Alberta T0K 1V0
UFA.com

BULLS SIRED BY G A R PHOENIX

LOT 3

BENCHMARK PHOENIX 17'20

Male BFL17H April 5, 2020

2165712



G A R SURE FIRE
Sire: G A R PHOENIX
G A R PROPHET N744
B/R NEW DESIGN 036
G A R NEW DESIGN 5050
Dam: G A R 5050 NEW DESIGN 2132
G A R OBJECTIVE 2670
G A R PREDESTINED N408

CONNEALY IN SURE 8524
CHAIR ROCK 5050 G A R 8086
G A R PROPHET
G A R DAYBREAK 440
G A R PRECISION 706 AMF NHC
SS OBJECTIVE T510 OT26

CARCASS	
EPD'S:	
MARB	+0.93
REA	+0.90
FAT	-0.009
ACTUAL:	
%IMF	4.38
REA	1.01
RIB FAT	0.33
LMY	62.9%

PERFORMANCE							EPD's				
AOD	BW	205D	365D	ADG	F:G	RFI	CE	BW	WW	YW	CBI
ET	95	640	1489	5.73	3.94	0.75	+6.0	+2.1	+75	+134	+0.2139 +286

SEPTEMBER 2021 EPD RANKING:

Top 1% Weaning Weight
Top 2% Ribeye
Top 30% Cdn Balanced Index
Top 1% Yearling Weight
Top 4% Marbling
Top 1% Carcass Weight
Top 20% Docility

Full brother to Lot 1 and 5. This is quite a bull! You will really like him for his scale, muscle shape, depth of body, demeanor and foot structure. Do note his 365 day weight.

LOT 4

BENCHMARK PHOENIX 24'20

Male BFL 24H April 6, 2020

2165718



G A R SURE FIRE
Sire: G A R PHOENIX
G A R PROPHET N744
MCC DAYBREAK
G A R ANTICIPATION
Dam: G A R ANTICIPATION N506
G A R CONTRAST L234
G A R OBJECTIVE 0J06

CONNEALY IN SURE 8524
CHAIR ROCK 5050 G A R 8086
G A R PROPHET
G A R DAYBREAK 440
G A R 5050 NEW DESIGN 0530
CONNEALY CONTRAST

CARCASS	
EPD'S:	
MARB	+1.14
REA	+0.61
FAT	-0.030
ACTUAL:	
%IMF	5.14
REA	0.96
RIB FAT	0.42
LMY	59.1%

PERFORMANCE							EPD's				
AOD	BW	205D	365D	ADG	F:G	RFI	CE	BW	WW	YW	CBI
ET	91	618	1378	5.47	3.96	1.21	+8.0	+3.0	+87	+151	+0.0804 +356

SEPTEMBER 2021 EPD RANKING:

Top 1% Yearling Weight
Top 1% Cdn Balanced Index
Top 15% Calving Ease
Top 1% Weaning Weight
Top 3% Carcass Weight
Top 20% Ribeye
Top 1% Marbling
Top 4% Residual ADG

This guy is out of the same dam as the Ashlund son we are using. She is a larger framed cow yet very productive. Lot 4 has lots of frame and his calves will rival anything out there for growth and gain and they will exhibit that end product merit. Grow, Gain and Grade!



LOT 3



Jamie Jensen-Whitney
Box 301 Maple Creek SK S0N 1N0
(306)662-4420 Home
(403)892-3486 Cell
jentech.ultrasound.2013@gmail.com
www.jentechultrasound.com

BULLS SIRED BY G A R PHOENIX

LOT 5

BENCHMARK PHOENIX 26'20

Male BFL 26H March 30, 2020

2169269



G A R SURE FIRE CONNEALY IN SURE 8524
Sire: G A R PHOENIX CHAIR ROCK 5050 G A R 8086
G A R PROPHET N744 G A R PROPHET
 G A R DAYBREAK 440
 C R A BEXTOR 872 5205 608
G A R NEW DESIGN 5050 G A R PRECISION 706
Dam: G A R 5050 NEW DESIGN 2132 S S OBJECTIVE T510 OT26
G A R OBJECTIVE 2670 G A R PREDESTINED N408

CARCASS	
EPD'S:	
MARB	+0.93
REA	+1.11
FAT	-0.005
ACTUAL:	
%IMF	5.2
REA	1.17
RIB FAT	0.37
LMY	62.6%

PERFORMANCE							EPD's						
AOD	BW	205D	365D	ADG	F:G	RFI	CE	BW	WW	YW	RFI	CBI	
ET	59	629	1341	5.07	3.73	-2.76	+13.0	-2.1	+63	+115	-0.1359	+289	

SEPTEMBER 2021 EPD RANKING:

Top 1% Birth Weight	Top 1% Ribeye	Top 2% Calving Ease
Top 4% Marbling	Top 7% Yearling Weight	Top 10% Weaning Weight
Top 6% Carcass Weight	Top 25% Cdn Balanced Index	

Very interesting bull here. Note his BW and then his WW and YW. Amazing! And on ultrasound a huge ribeye. Isn't this what the beef business is about? A live calf that grows, gains and grades. This guy ranked #5 on our Grow Safe test out of 87 bulls.

LOT 6

BENCHMARK PHOENIX 29'20

Male LAA 29H April 7, 2020

2159412



G A R SURE FIRE CONNEALY IN SURE 8524
Sire: G A R PHOENIX CHAIR ROCK 5050 G A R 8086
G A R PROPHET N744 G A R PROPHET
 G A R DAYBREAK 440
 SYDGEN TRUST 6228
G A R INNOVATION 3002G GOODE MANDATE 1751
Dam: BENCHMARK PRIDE 48'18 G A R EFFICIENCY 7295
BENCHMARK PRIDE 86'12 BENCHMARK PRIDE 5136

CARCASS	
EPD'S:	
MARB	+0.72
REA	+0.82
FAT	+0.014
ACTUAL:	
%IMF	4.78
REA	1.13
RIB FAT	0.37
LMY	61.3%

PERFORMANCE							EPD's						
AOD	BW	205D	365D	ADG	F:G	RFI	CE	BW	WW	YW	RFI	CBI	
2	79	642	1321	4.92	4.27	-0.46	+10.0	+1.2	+81	+142	-0.0264	+256	

SEPTEMBER 2021 EPD RANKING:

Top 1% Weaning Weight	Top 1% Yearling Weight	Top 1% Carcass Weight
Top 4% Ribeye	Top 9% Calving Ease	Top 9% Residual ADG
Top 10% Marbling	Top 10% Milk	

From an Innovation two-year-old. Innovation is one of the top bull out there for Dry Matter Intake, being near the top on all bulls tested by Grow Safe. Many breeders talk efficiency, we measure it and have cold hard data.

LOT 7

BENCHMARK PHOENIX 30'20

Male BFL 30H April 8, 2020

2159365



G A R SURE FIRE CONNEALY IN SURE 8524
Sire: G A R PHOENIX CHAIR ROCK 5050 G A R 8086
G A R PROPHET N744 G A R PROPHET
 G A R DAYBREAK 440
 SYDGEN TRUST 6228
G A R INNOVATION 3002G GOODE MANDATE 1751
Dam: BENCHMARK NEW LASSIE 98'18 GAR INGENUITY J2024
BENCHMARK NEW LASSIE 92'14 BENCHMARK NEW LASSIE 82'11

CARCASS	
EPD'S:	
MARB	+0.92
REA	+0.87
FAT	-0.005
ACTUAL:	
%IMF	4.21
REA	1.12
RIB FAT	0.26
LMY	64.5%

PERFORMANCE							EPD's						
AOD	BW	205D	365D	ADG	F:G	RFI	CE	BW	WW	YW	RFI	CBI	
2	94	648	1376	5.45	3.90	-0.99	+7.0	+3.3	+81	+153	-0.0605	+271	

SEPTEMBER 2021 EPD RANKING:

Top 1% Weaning Weight	Top 1% Yearling Weight	Top 1% Carcass Weight
Top 1% Residual ADG	Top 3% Ribeye	Top 4% Marbling
Top 10% Milk	Top 15% Fat	

Three-quarter brother to Lot 6. Concerned about yield on your finished cattle, checkout his LMY at 64.5%. Lot 7 finished #19 out of 87 bulls on GrowSafe.



LOT 6

BALOG AUCTION SERVICES INC.

EXPERIENCE - ENTHUSIASM - INTENSITY - ABILITY
 LETHBRIDGE, AB

"40 FULL YEARS"
 OF SERVING AGRICULTURAL PRODUCERS
 IN WESTERN CANADA!

GIVE US A CALL FOR ALL YOUR LIVESTOCK, MACHINERY & REAL ESTATE REQUIREMENTS

BALOG AUCTIONS
 403-320-1700
 WEBSITE: WWW.BALOGAUCTION.COM
 EMAIL: SOLD@BALOGAUCTION.COM

REFERENCE SIRE

BENCHMARK® TENDER BEEF 11'17



CAA
GENOMIC
ENHANCED
EPDs

CE
+7.0

BW
+2.5

WW
+90

YW
+151

CW
+74

MARB
+1.26

REA
+1.16

DOC
+28

CBI
+328

PERF	AOD	BW	205D	365D
	2	79	781	1282

VALUE INDEX	\$W	\$F	\$G	\$B	\$C
	+93	+114	+88	+202	+331
RANKING	2%	10%	1%	1%	1%

C R A BEXTOR 872 5205 608 1167526
Sire: **G A R PROPHET**
G A R OBJECTIVE 1885
B A R EXT TRAVELER 205
CRA LADY JAYE 608 498 S EASY
S S OBJECTIVE T510 OT26 1F
G A R 1407 LNEW DESIGN 2232
MCC DAYBREAK 1356843
G A R ANTICIPATION
GA R 5050 NEW DESIGN 0530
Dam: **BENCHMARK QUEEN 259'14**
CONNEALY IN SURE 8524
G A R IN SURE N1122 2145958
G A R BEXTOR N48

We lost Tender Beef this summer due to an injury. It was a sad day to see him go. He will leave a mark in our program for years to come! He certainly checks all the boxes from moderate calving ease, good growth and gain and terrific end product merit and now coming in with a Top 7% for Canadian Balanced Index.

OWNED WITH BASIN ANGUS RANCH 10 SONS SELL

- Avg. BW: 87 lbs
- Avg. 205D: 615 lbs.
- Avg. 365D: 1250 lbs

SEPTEMBER 2021 EPD RANKING:

Top 1% Weaning Weight	Top 1% Fat
Top 1% Yearling Weight	Top 5% Docility
Top 1% Carcass Weight	Top 7% CDN Balanced Index
Top 1% Marbling	Top 10% Residual ADG
Top 1% Ribeye	Top 25% Calving Ease

BULLS SIRED BY BENCHMARK® TENDER BEEF

LOT 8

BENCHMARK TENDER BEEF 3'20 2159352
Male BFL 3H March 26, 2020



G A R PROPHET
C R A BEXTOR 872 5205 608
G A R OBJECTIVE 1885
Sire: **BENCHMARK TENDER BEEF 11'17**
G A R ANTICIPATION
BENCHMARK QUEEN 259'14
G A R IN SURE N1122
B/R FUTURE DIRECTION 4268
WR JOURNEY-IX74
2 BAR 5050 NEW DESIGN 7831
Dam: **BENCHMARK BELLE 206'17**
G A R END POINT 5122
BENCHMARK BELLE 229'15
G A R OBJECTIVE N2080

CARCASS EPD'S:	
MARB	+1.16
REA	+1.12
FAT	-0.031
ACTUAL:	
%IMF	7.01
REA	1.08
RIB FAT	0.29
LMY	64.1%

PERFORMANCE							EPD's					
AOD	BW	205D	365D	ADG	F:G	RFI	CE	BW	WW	YW	RFI	CBI
2	85	641	1459	6.11	3.59	-0.97	+9.0	+2.8	+86	+147	-0.0187	+320

SEPTEMBER 2021 EPD RANKING:

Top 1% Weaning Weight	Top 1% Yearling Weight	Top 1% Carcass Weight	Top 1% Marbling
Top 1% Ribeye	Top 2% Fat	Top 5% Docility	
Top 9% Residual ADG	Top 10% Calving Ease	Top 10% Cdn Balanced Index	

Great LMY on this guy along with terrific growth and a great ultrasound verifying the EPDs. This bull is very long and if you are needing a bit more frame take a look. No need to be using a crossbred bull when you can achieve so much more!



LOT 8

LOT 9

BENCHMARK TENDER BEEF 6'20 2165808
Male BFL 6H March 30, 2020



G A R PROPHET
C R A BEXTOR 872 5205 608
G A R OBJECTIVE 1885
Sire: **BENCHMARK TENDER BEEF 11'17**
G A R ANTICIPATION
BENCHMARK QUEEN 259'14
G A R IN SURE N1122
B/R NEW DESIGN 036
G A R NEW DESIGN 5050
G A R PRECISION 706
Dam: **G A R 5050 NEW DESIGN 2132**
S S OBJECTIVE T510 OT26
G A R OBJECTIVE 2670
G A R PREDESTINED N408

CARCASS EPD'S:	
MARB	+1.14
REA	+0.75
FAT	-0.028
ACTUAL:	
%IMF	5.92
REA	0.76
RIB FAT	0.36
LMY	58.9%

PERFORMANCE							EPD's					
AOD	BW	205D	365D	ADG	F:G	RFI	CE	BW	WW	YW	RFI	CBI
ET	80	662	1366	4.94	4.31	0.29	+7.0	+0.9	+71	+129	-0.1258	+311

SEPTEMBER 2021 EPD RANKING:

Top 1% Carcass Weight	Top 1% Marbling	Top 1% Milk
Top 2% Yearling Weight	Top 2% Fat	Top 3% Weaning Weight
Top 6% Residual ADG	Top 9% Ribeye	Top 10% Cdn Balanced Index
		Top 10% Docility

From the 2132 Cow. Big, long and very quiet. His calves will have extra frame, will gain and grow and for sure will grade and the daughters will milk.



LOT 9



**TABER CATTLE
CLINIC**

403-223-2000
office@tabercattleclinic.com
6303 55 St. Taber, AB

**Munton &
Michaelis**
Professional Corporation
Chartered Professional Accountants

BULLS SIRED BY BENCHMARK® TENDER BEEF

LOT 10

BENCHMARK TENDER BEEF 52'20

Male BFL 52H April 15, 2020

Not registered with
CAA but with AAA

G A R PROPHET
Sire: BENCHMARK TENDER BEEF 11'17
BENCHMARK QUEEN 259'14
G A R IN SURE N1122
SITZ UPWARD 307R
Dam: BENCHMARK RITA 7'13
G A R NEW DESIGN 1761
G A R PRECISION 2168

CARCASS EPD's:	
MARB	+0.94
REA	+0.88
FAT	-0.022
ACTUAL:	
%IMF	5.46
REA	1.21
RIB FAT	0.31
LMY	-

PERFORMANCE							EPD's						
AOD	BW	205D	365D	ADG	F-G	RFI	CE	BW	WW	YW	RFI	CBI	
7	87	585	1204	5.40	3.66	-2.60	+6.0	+2.6	+72	+128	-0.2664	+285	

SEPTEMBER 2021 EPD RANKING:

Top 15% Marbling
Top 15% Yearling Weight
Top 15% Ribeye
Top 15% Fat
Top 15% Weaning Weight

LOT 11

BENCHMARK TENDER BEEF 76'20

2159307

Male BFL 76H April 27, 2020



G A R PROPHET
Sire: BENCHMARK TENDER BEEF 11'17
BENCHMARK QUEEN 259'14
G A R IN SURE N1122
G A R BASELINE AB297
Dam: BENCHMARK BARBARA 147'16
BENCHMARK BARBARA 9149
BENCHMARK BARBARA 70013

CARCASS EPD's:	
MARB	+0.86
REA	+0.88
FAT	-0.02
ACTUAL:	
%IMF	5.73
REA	1.22
RIB FAT	0.35
LMY	60.8%

PERFORMANCE							EPD's						
AOD	BW	205D	365D	ADG	F-G	RFI	CE	BW	WW	YW	RFI	CBI	
4	94	574	1206	4.34	4.84	0.18	+4.0	+3.6	+69	+128	+0.1378	+325	

SEPTEMBER 2021 EPD RANKING:

Top 1% Milk
Top 4% Residual ADG
Top 6% Marbling
Top 2% Yearling Weight
Top 4% Carcass Weight
Top 6% Docility
Top 2% Ribeye
Top 5% Fat
Top 8% Cdn Balanced Index

This bull and his mother carry American Angus Assoc. registration papers. Lot 10's grandmother, G A R Design 1761, carries some valuable genetics serving as a donor with 55 calves registered. Note Sitz Upward 307R with over 26,000 off spring on the books. Lot 10 finished #6 on Grow Safe Test out of 87 bulls.

A full sister to Lot 11 works at Ranchland Angus with a Phoenix baby at her side. The Baseline daughters are moderate, good milking, good mothers and quiet.

Quality From Benchmark Angus

BEN'S QUALITY MEATS

THE BEST TASTING BEEF FOR NEARLY 100 YEARS.

Currently, our fourth generation in ranching continues the ongoing quest for the productive and efficient cattle that are continually exceeding the industry standards and satisfying all who consume beef. The Munton family has been pursuing Angus beef genetics for the proven tenderness and far superior taste that only Premium Benchmark Angus Cattle provide.

403-732-5122
BENQMEATS.NET
BENQMEATS@GMAIL.COM
100 FACTORY DRIVE
BOX 129
PICTURE BUTTE, AB T0K 1V0

@BENCHMARKANGUS

@BENCHMARKANGUS

BULLS SIRED BY BENCHMARK® TENDER BEEF

LOT 12 BENCHMARK TENDER BEEF 115'20 2159184 Male BFL 115H May 6, 2020

G A R PROPHET
Sire: BENCHMARK TENDER BEEF 11'17
BENCHMARK QUEEN 259'14
G A R IN SURE N1122
B/R NEW DESIGN 036
G A R NEW DESIGN 5050
Dam: BENCHMARK LUCY 9'12
BENCHMARK LUCY 0131
BENCHMARK LUCY 769

CARCASS EPD'S:	
MARB	+1.19
REA	+0.97
FAT	-0.009
ACTUAL:	
%IMF	6.32
REA	1.13
RIB FAT	0.30
LMY	61.8%

PERFORMANCE							EPD's						
AOD	BW	205D	365D	ADG	F:G	RFI	CE	BW	WW	YW	RFI	CBI	
8	95	720	1290	4.50	4.40	-1.10	+2.0	+3.3	+79	+128	-0.0888	-	

SEPTEMBER 2021 EPD RANKING:

Top 1% Milk
Top 10% Docility
Top 2% Marbling
Top 15% Carcass Weight
Top 7% Ribeye

The dam has a daughter at Lorne Schroeder's and has sons sell to Harvey Goetz, Deer Creek Livestock, Cynosure and YV Ranch. She is Elite by Canadian Angus Assoc. Standards. Finished #16 on GrowSafe Test.

LOT 13 BENCHMARK TENDER BEEF 126'20 2159264 Male BFL 126H May 9, 2020

G A R PROPHET
Sire: BENCHMARK TENDER BEEF 11'17
BENCHMARK QUEEN 259'14
G A R IN SURE N1122
G A R NEW DESIGN 5050
G A R BASELINE AB297
Dam: BENCHMARK LAVENDER LADY 228'15
BENCHMARK LAVENDER LADY 234A
BENCHMARK LAVENDER LADY 188'11

CARCASS EPD'S:	
MARB	+1.04
REA	+0.74
FAT	-0.008
ACTUAL:	
%IMF	5.54
REA	1.19
RIB FAT	0.26
LMY	62%

PERFORMANCE							EPD's						
AOD	BW	205D	365D	ADG	F:G	RFI	CE	BW	WW	YW	RFI	CBI	
5	90	569	1143	3.77	4.41	-3.31	+11.0	+0.1	+70	+122	-0.1962	-	

SEPTEMBER 2021 EPD RANKING:

Top 2% Marbling
Top 6% Calving Ease
Top 20% Residual ADG
Top 3% Weaning Weight
Top 9% Ribeye
Top 20% Carcass Weight
Top 4% Yearling Weight
Top 10% Birth Weight

Lot 11, 13, 14 and 16 are three quarter brothers all by Tender Beef out of Baseline daughters. Lot 13 is moderate, deep-sided with good end product merit. Finished #2 on GrowSafe Test



LOT 14 BENCHMARK TENDER BEEF 139'20 Male BFL 139H May 14, 2020

G A R PROPHET
Sire: BENCHMARK TENDER BEEF 11'17
BENCHMARK QUEEN 259'14
G A R IN SURE N1122
G A R NEW DESIGN 5050
G A R BASELINE AB297 DDF
Dam: BENCHMARK BELLE 88'17
BENCHMARK BELLE 122'12
G A R 1407 NEW DESIGN N85

CARCASS EPD'S:	
MARB	+1.28
REA	+0.83
FAT	-0.011
ACTUAL:	
%IMF	6.84
REA	1.15
RIB FAT	0.34
LMY	59.9%

PERFORMANCE							EPD's						
AOD	BW	205D	365D	ADG	F:G	RFI	CE	BW	WW	YW	RFI	CBI	
3	83	621	1235	4.28	4.39	-2.01	+10.0	+0.8	+75	+128	-0.2375	-	

SEPTEMBER 2021 EPD RANKING:

Top 1% Weaning Weight
Top 4% Ribeye
Top 10% Residual ADG
Top 1% Marbling
Top 7% Carcass Weight
Top 10% Milk
Top 2% Yearling Weight
Top 10% Fat

Growth, Gain and Grade. Extra length in this guy. Lot 14 finished #9 out of 87 on GrowSafe Test.

BULLS SIRED BY BENCHMARK® TENDER BEEF

LOT 15

BENCHMARK TENDER BEEF 156'20 2159164
Male BFL 156H May 20, 2020

G A R PROPHET		C R A BEXTOR 872 5205 608	CARCASS EPD'S: MARB +0.56 REA +0.63 FAT -0.010 ACTUAL: %IMF 4.14 REA 1.11 RIB FAT 0.26 LMY 60.8%
Sire: BENCHMARK TENDER BEEF 11'17		G A R OBJECTIVE 1885	
BENCHMARK QUEEN 259'14		G A R ANTICIPATION	
		G A R IN SURE N1122	
		EMULATION N BAR 5522	
N BAR EMULATION EXT		N BAR PRIMROSE 2424	ACTUAL: %IMF 6.16 REA 1.16 RIB FAT 0.29 LMY 61.0%
Dam: BENCHMARK ESTER 862		PARAMONT AMBUSH 2172	
THOMAS ESTER 0190		THOMAS ESTER 8380	

PERFORMANCE							EPD's				
AOD	BW	205D	365D	ADG	F:G	RFI	CE	BW	WW	YW	CBI
12	90	604	1183	4.39	4.15	-2.78	+3.0	+2.3	+60	+100	-0.2537

SEPTEMBER 2021 EPD RANKING:

Top 6% Milk	Top 10% Fat	Top 15% Weaning Weight
Top 20% Carcass Weight	Top 20% Marbling	Top 20% Ribeye

From an own daughter of the Patriarch N Bar Emulation EXT. She has had sons sell to Ed Rath, Brent Hockstein, Blood Band Ranch, Rosetown Farming and three daughters have been retained. Finished #4 out of 87 bulls on GrowSafe.

LOT 16

BENCHMARK TENDER BEEF 177'20 2159241
Male BFL 177H May 24, 2020

G A R PROPHET		C R A BEXTOR 872 5205 608	CARCASS EPD'S: MARB +1.09 REA +0.94 FAT -0.035 ACTUAL: %IMF 6.16 REA 1.16 RIB FAT 0.29 LMY 61.0%
Sire: BENCHMARK TENDER BEEF 11'17		G A R OBJECTIVE 1885	
BENCHMARK QUEEN 259'14		G A R ANTICIPATION	
		G A R IN SURE N1122	
		G A R NEW DESIGN 5050	
G A R BASELINE AB297		G A R OBJECTIVE 648S	ACTUAL: %IMF 6.16 REA 1.16 RIB FAT 0.29 LMY 61.0%
Dam: BENCHMARK BELLE 84'15		G A R PRECISION 1680	
G A R PRECISION G296		G A R T150 TRAVELER 1042	

PERFORMANCE							EPD's				
AOD	BW	205D	365D	ADG	F:G	RFI	CE	BW	WW	YW	CBI
5	77	575	1213	4.70	4.59	-0.07	+14.0	-0.8	+66	+116	+0.0411

SEPTEMBER 2021 EPD RANKING:

Top 1% Calving Ease	Top 1% Marbling	Top 1% Ribeye	Top 1% Fat
Top 5% Birth Weight	Top 7% Weaning Weight	Top 7% Yearling Weight	
Top 10% Carcass Weight	Top 20% Docility	Top 20% Residual ADG	

The dam here had a son go to our good friend Sheldon Anderson and a daughter resides at Iron Horse Cattle Co. Lot 16 shows great length and good feet.

LOT 17

BENCHMARK TENDER BEEF 201'20 2159305
Male BFL 201H June 8, 2020

G A R PROPHET		C R A BEXTOR 872 5205 608	CARCASS EPD'S: MARB +0.61 REA -0.78 FAT -0.016 ACTUAL: %IMF 4.48 REA 1.21 RIB FAT 0.29 LMY 60.5%
Sire: BENCHMARK TENDER BEEF 11'17		G A R OBJECTIVE 1885	
BENCHMARK QUEEN 259'14		G A R ANTICIPATION	
		G A R IN SURE N1122	
		G A R PROPHET	
G A R PROPHET A011		G A R 1407 NEW DESIGN 3064	ACTUAL: %IMF 4.48 REA 1.21 RIB FAT 0.29 LMY 60.5%
Dam: BENCHMARK LADY HEATHER 140'16		G A R INGENUITY J2024	
BENCHMARK LADY HEATHER 132'14		BENCHMARK LADY HEATHER 141'11	

PERFORMANCE							EPD's				
AOD	BW	205D	365D	ADG	F:G	RFI	CE	BW	WW	YW	CBI
4	87	595	1199	5.31	4.28	-0.24	+6.0	+2.6	+67	+119	+0.1499

SEPTEMBER 2021 EPD RANKING:

Top 1% Milk	Top 5% Yearling Weight	Top 6% Weaning Weight
Top 6% Ribeye	Top 7% Fat	Top 8% Carcass Weight
Top 15% Marbling	Top 20% Docility	

Good footed moderate bull with good end product merit numbers from a real nice A011 daughter.



LOT 17

NOW SERVING COALDALE!



SCHWARTZ RELIANCE
INSURANCE

1716 20th Ave, Coaldale, AB
403.345.4848 info@schwartzcoaldale.com



403 223-9654
94402 46 Ave, Taber

Sales 
Parts 
Service 



REFERENCE SIRE

E F PRIME QUARTER 5369



CAA
GENOMIC
ENHANCED
EPDs

CE
+15.0

BW
+0.9

WW
+78

YW
+134

CW
+43

MARB
+1.15

REA
+0.41

DOC
+25

CBI
+354

PERF	AOD	BW	205D	365D
	2	72	738	1266

VALUE INDEX	\$W	\$F	\$G	\$B	\$C
	+83	+76	+66	+142	+286
RANKING	10%	70%	10%	35%	10%

CONNEALY CONSENSUS 7229

Sire: V A R GENERATION 2100

SANDPOINT BLACKBIRD 8809

G A R PROPHET

Dam: EF RITA 3422

EF RITA 7328

CONNEALY CONSENSUS

BLUE LILLY OF CONANGA 16

CONNEALY ONWARD

RIVERBEND BLACKBIRD 430

C R A BEXTOR

G A R OBJECTIVE 1885

G A R PREDESTINED

A PLUS RITA 5H11 8009

Prime Quarter has proven to be a great bull for our program. He sired our high-selling bull in sale XXIV and his daughters are for sure the right kind. His pedigree reads like the 'Whose Who' of the Angus Breed and his sons and daughters prove just that. He moderates stature, provides docility and we love his daughters in production. Note on the American Angus \$ Values for \$ Maternal Value, Prime Quarter comes in at +102 ranking in the Top 1%.

OWNED WITH SEMEX & EVANS FARMS
& ROSETOWN FARMING

8 SONS SELL

- Avg. BW: 86 lbs
- Avg. 205D: 587 lbs
- Avg. 365D: 1213 lbs

SEPTEMBER 2021 EPD RANKING:

Top 1% Calving Ease
Top 1% Weaning Weight
Top 1% Yearling Weight
Top 1% Marbling

Top 1% Maternal Calving Ease
Top 2% CDN Balanced Index
Top 10% Docility

BULLS SIRED BY E F PRIME QUARTER

LOT 18

BENCHMARK PRIME QUARTER 54'20 2159345
Male BFL 54H April 21, 2020



CONNEALY CONSENSUS 7229
V A R GENERATION 2100
SANDPOINT BLACKBIRD 8809
Sire: **EF PRIME QUARTER 5369**
G A R PROPHET DMF DWF
EF RITA 3422 DDF
EF RITA 7328
G A R NEW DESIGN 5050
G A R BASELINE AB297
G A R OBJECTIVE 648S
Dam: **BENCHMARK PATRICIA 115'17**
B/R NEW DESIGN 036
ROYAL PATRICIA DRCC 7022T
ROYAL PATRICIA DRCC 2039M

CARCASS	
EPD's:	
MARB	+0.77
REA	+0.54
FAT	+0.027
ACTUAL:	
%IMF	4.89
REA	1.08
RIB FAT	0.40
LMY	58.9%

PERFORMANCE							EPD's						
AOD	BW	205D	365D	ADG	F:G	RFI	CE	BW	WW	YW	RFI	CBI	
3	72	593	1194	4.65	4.46	-0.66	+18.0	-1.4	+68	+119	+0.0589	-	

SEPTEMBER 2021 EPD RANKING:

Top 1% Calving Ease Top 1% Maternal Calving Ease Top 3% Birth Weight
Top 5% Weaning Weight Top 5% Yearling Weight Top 9% Marbling

Lot 18 has a maternal brother at Acadia Colony via sale XXIV, and do note that 2039M is Elite. He is very quiet and would qualify as a heifer bull.

LOT19

BENCHMARK PRIME QUARTER 63'20 2159405
Male LAA 63H April 24, 2020



CONNEALY CONSENSUS 7229
V A R GENERATION 2100
SANDPOINT BLACKBIRD 8809
Sire: **EF PRIME QUARTER 5369**
G A R PROPHET DMF DWF
EF RITA 3422 DDF
EF RITA 7328
B/R FUTURE DIRECTION 4268
WR JOURNEY-1X74
2 BAR 5050 NEW DESIGN 7831
Dam: **BENCHMARK BLACKCAP 2'17**
G A R BASELINE AB297
BENCHMARK BLACKCAP 119'15
BENCHMARK BLACKCAP 75'11

CARCASS	
EPD's:	
MARB	+0.85
REA	+0.80
FAT	-0.014
ACTUAL:	
%IMF	4.91
REA	1.18
RIB FAT	0.30
LMY	62.7%

PERFORMANCE							EPD's						
AOD	BW	205D	365D	ADG	F:G	RFI	CE	BW	WW	YW	RFI	CBI	
3	90	617	1296	4.98	4.05	-1.54	+13.0	+0.0	+65	+120	-0.0414	+323	

SEPTEMBER 2021 EPD RANKING:

Top 1% Milk Top 2% Calving Ease Top 4% Yearling Weight Top 5% Ribeye
Top 6% Marbling Top 8% Weaning Weight Top 9% Cdn Balanced Index Top 9% Fat
Top 10% Birth Weight Top 10% Docility Top 10% MCE Top 10% Residual ADG

The dam by Journey had a son sell to Boonero Feeders in last year's sale our 24th. You will like this bull, thick deep, quiet on good feet and legs. He does a lot of things right! On Growsafe test finished #13.



LOT 19

GIVE AWAY

OLS TUB

SEE PAGE 42
ALL INGREDIENTS

**TUB FROM OLS
FOR TOP
VOLUME
BUYER FOR
BLACK BULLS**

DW DAVIDSON & WILLIAMS LLP
Serving Southern Alberta for 135 Years

WE OFFER SERVICES IN THE AREAS OF:

- Real Estate • Corporate & Commercial
- Personal Injury • Labour & Employment
- Wills & Estates • Farm & Agricultural
- Litigation & Dispute Resolution • Family Law

501 4 STREET SOUTH • LETHBRIDGE, ALBERTA • (403) 328-1766 • www.dwlaw.pro

BULLS SIRED BY E F PRIME QUARTER

LOT 20 BENCHMARK PRIME QUARTER 71'20 2159338 Male BFL 71H April 26, 2020



CONNEALY CONSENSUS 7229
V A R GENERATION 2100
SANDPOINT BLACKBIRD 8809
Sire: EF PRIME QUARTER 5369
G A R PROPHET DMF DWF
EF RITA 3422 DDF
EF RITA 7328
G A R NEW DESIGN 5050
G A R BASELINE AB297
G A R OBJECTIVE 648S
Dam: BENCHMARK BARBARA 39'17
G A R RETAIL PRODUCT
BENCHMARK BARBARA 70013
BENCHMARK BARBARA 271

CARCASS EPD'S:	
MARB	+0.84
REA	+0.59
FAT	+0.016
ACTUAL:	
%IMF	5.22
REA	1.13
RIB FAT	0.31
LMY	60.7%

PERFORMANCE							EPD's					
AOD	BW	205D	365D	ADG	F:G	RFI	CE	BW	WW	YW	RFI	CBI
3	78	574	1169	4.65	4.68	0.15	+14.0	+0.5	+60	+108	+0.2770	-

SEPTEMBER 2021 EPD RANKING:

Top 1% Calving Ease Top 4% Maternal Calving Ease Top 6% Marbling
Top 10% Yearling Weight Top 15% Weaning Weight

These Prime Quarter's have wonderful temperament. The Baseline dam has a daughter nursing her first calf at Benchmark.

LOT 21 BENCHMARK PRIME QUARTER 123'20 2159217 Male BFL 123H May 9, 2020



CONNEALY CONSENSUS 7229
V A R GENERATION 2100
SANDPOINT BLACKBIRD 8809
Sire: EF PRIME QUARTER 5369
G A R PROPHET DMF DWF
EF RITA 3422 DDF
EF RITA 7328
G A R PREDESTINED
BENCHMARK PREDESTINED 8301
G A R T510 TRAVELER 264
Dam: BENCHMARK BARBARA 59'14
S S TRAVELER 6807 T510
BENCHMARK BARBARA 9149
BENCHMARK BARBARA 70013

CARCASS EPD'S:	
MARB	+1.03
REA	+0.40
FAT	+0.015
ACTUAL:	
%IMF	5.77
REA	1.04
RIB FAT	0.30
LMY	60.4%

PERFORMANCE							EPD's					
AOD	BW	205D	365D	ADG	F:G	RFI	CE	BW	WW	YW	RFI	CBI
6	93	557	1214	5.20	4.50	1.01	+7.0	+2.8	+64	+120	+0.3880	-

SEPTEMBER 2021 EPD RANKING:

Top 2% Marbling Top 4% Yearling Weight Top 9% Weaning Weight

Maternal brother's work at Garbo Ranching and Shane Schmid's. Shane participates in our buy back program and his calves gain and grade. "The proof is in the pudding." A little more frame in Lot 21.



LOT 20

LOT 22 BENCHMARK PRIME QUARTER 134'20 BFL 134H May 11, 2020

2159276

CONNEALY CONSENSUS 7229
V A R GENERATION 2100
SANDPOINT BLACKBIRD 8809
Sire: EF PRIME QUARTER 5369
G A R PROPHET DMF DWF
EF RITA 3422 DDF
EF RITA 7328
G A R NEW DESIGN 5050
G A R BASELINE AB297
G A R OBJECTIVE 648S
Dam: BENCHMARK ELBINA 28'16
SITZ TRAVELER 043
BENCHMARK ELBINA 839
ROYAL ELBINA DRCC 2043M

CARCASS EPD'S:	
MARB	+0.62
REA	+0.58
FAT	+0.014
ACTUAL:	
%IMF	4.38
REA	1.11
RIB FAT	0.27
LMY	61.6%

PERFORMANCE							EPD's					
AOD	BW	205D	365D	ADG	F:G	RFI	CE	BW	WW	YW	RFI	CBI
4	89	582	1199	4.87	4.11	-1.79	+12.0	+1.1	+64	+112	-0.0006	-

SEPTEMBER 2021 EPD RANKING:

Top 3% Calving Ease Top 7% Maternal Calving Ease Top 9% Weaning Weight
Top 10% Yearling Weight Top 15% Marbling

A maternal sister by Prime Quarter works at Ranchland Cattle Co. Of note, the 2043M cow was part of our embryo program a few years back. Lot 22 was #12 on the Grow Safe Test.

BULLS SIRED BY E F PRIME QUARTER

LOT 23

BENCHMARK PRIME QUARTER 136'20 2159198
Male BFL 136H May 12, 2020



V A R GENERATION 2100
Sire: **EF PRIME QUARTER 5369**
EF RITA 3422 DDF
EF RITA 7328
SITZ UPWARD 307R
TRIARA MADE TO ORDER 366Y
RBF RITA 6A98 4TV7 2A63
Dam: **BENCHMARK SALLY 63'13**
STANDARD HILL PAYOFF 20P
BENCHMARK SALLY 8197
SUPERB 410H LASS

CARCASS EPD'S:	
MARB	+0.56
REA	+0.71
FAT	+0.032
ACTUAL:	
%IMF	3.66
REA	1.03
RIB FAT	0.28
LMY	61%

PERFORMANCE							EPD's					
AOD	BW	205D	365D	ADG	F:G	RFI	CE	BW	WW	YW	RFI	CBI
7	90	588	1260	5.56	4.15	0.26	+7.0	+2.2	+82	+145	+0.2337	337

SEPTEMBER 2021 EPD RANKING:

Top 1% Weaning Weight	Top 1% Yearling Weight	Top 1% Heifer Pregnancy
Top 4% Cdn Balanced Index	Top 7% Carcass Weight	Top 10% Ribeye
Top 10% Residual ADG	Top 20% Marbling	

Here is the full brother to last year's high selling bull going to Shane & Brady Scott and Vince Stevenson. Check the rankings above. He does a lot of things right, thus his high ranking for the new Canadian Angus Balanced Index.

LOT 24

BENCHMARK PRIME QUARTER 148'20 2159320
Male BFL 148H May 19, 2020



V A R GENERATION 2100
Sire: **EF PRIME QUARTER 5369**
EF RITA 3422 DDF
EF RITA 7328
MCC DAYBREAK
G A R ANTICIPATION
G A R 5050 NEW DESIGN 0530
Dam: **G A R ANTICIPATION N506**
CONNEALY CONTRAST
G A R CONTRAST L234
G A R OBJECTIVE 0J06

CARCASS EPD'S:	
MARB	+1.13
REA	+0.56
FAT	+0.035
ACTUAL:	
%IMF	6.98
REA	1.24
RIB FAT	0.51
LMY	56.1%

PERFORMANCE							EPD's					
AOD	BW	205D	365D	ADG	F:G	RFI	CE	BW	WW	YW	RFI	CBI
4	94	607	1243	5.18	4.24	-0.35	+14.0	+1.7	+69	+117	+0.1284	+316

SEPTEMBER 2021 EPD RANKING:

Top 1% Marbling	Top 1% Calving Ease	Top 4% Maternal Calving Ease
Top 4% Weaning Weight	Top 6% Yearling Weight	Top 10% Cdn Balanced Index

Here is the natural calf from donor N506. We really like this guy. He is deep, thick and has the presence of a herd bull. Could be another sale topper by Prime Quarter.



LOT 24

LOT 25

BENCHMARK PRIME QUARTER 163'20 2159189
Male BFL 163H May 22, 2020

V A R GENERATION 2100
Sire: **EF PRIME QUARTER 5369**
EF RITA 3422 DDF
EF RITA 7328
S S OBJECTIVE T510 OT26
G A R EFFICIENCY 7295
G A R RENHAVER G113 NHF
Dam: **BENCHMARK ISABELLA 213'12**
WHITESTONE BARON W279
BENCHMARK ISABELLA 9304
LCOC ISABELLA TG112

CARCASS EPD'S:	
MARB	+1.02
REA	-0.45
FAT	-0.002
ACTUAL:	
%IMF	5.07
REA	1.06
RIB FAT	0.16
LMY	63.2%

PERFORMANCE							EPD's					
AOD	BW	205D	365D	ADG	F:G	RFI	CE	BW	WW	YW	RFI	CBI
8	82	578	1130	4.37	4.90	0.11	+10.0	+0.4	+64	+108	+0.2206	-

SEPTEMBER 2021 EPD RANKING:

Top 2% Marbling	Top 7% Maternal Calving Ease	Top 9% Calving Ease
Top 9% Weaning Weight	Top 10% Yearling Weight	Top 10% Carcass Weight

Isabella 213'12 has a son at Granum and a daughter retained. Last of the Prime Quarter's Be sure you own a couple, they do work.

REFERENCE SIRE

BASIN PAYWEIGHT 1682



CAA
GENOMIC
ENHANCED
EPDs

CE
+7.0

BW
+0.6

WW
+66

YW
+118

CW
+52

MARB
+0.61

REA
+0.29

DOC
+24

CBI
+313

PERF	AOD	BW	205D	365D
	ET	89	757	1197

VALUE INDEX	\$W	\$F	\$G	\$B	\$C
	+93	+100	+40	+140	+258
RANKING	2%	25%	55%	40%	25%

VERMILION PAYWEIGHT J847

Sire: BASIN PAYWEIGHT 0062

BASIN LUCY 3829

HARB PENDLETON 765

Dam: 21AR 0 LASS 7017

21AR 0 LASS F24A

VERMILION DATELINE 7078

VERMILION LASS 7969

C A FUTURE DIRECTION 5321

BASIN LUCY 178E

S A V FINAL ANSWER 0035

H A R B BLACK LADY 375

VDAR LEGEND 1281

21AR 0 LASS A24

1682 and his son's have certainly left their mark in the Angus business. Several sons and daughters and now grandsons and grand daughters are commanding huge dollars throughout North America. They exhibit moderation, depth of body and are thicker than thick! The 1682 group sold really well last year and we expect the same for sale XXV.

6 SONS & GRANDSONS SELL

- Avg. BW: 86 lbs
- Avg. 205D: 589 lbs.
- Avg. 365D: 1294 lbs

SEPTEMBER 2021 EPD RANKING:

- | | |
|------------------------|----------------------------|
| Top 2% Milk | Top 10% Docility |
| Top 5% Yearling Weight | Top 10% CDN Balanced Index |
| Top 7% Weaning Weight | Top 15% Marbling |
| Top 10% Carcass Weight | |

BULLS SIRED BY BASIN PAYWEIGHT

LOT 26

BENCHMARK PAYMASTER 21'20

2165726

Male BFL 21H April 5, 2020



Sire: BASIN PAYWEIGHT 1682
 21AR O LASS 7017
 21AR O LASS F24A
 MCC DAYBREAK
 G A R ANTICIPATION
 G A R 5050 NEW DESIGN 0530
Dam: G A R ANTICIPATION N506
 CONNEALY CONTRAST
 G A R CONTRAST L234
 G A R OBJECTIVE 0J06

CARCASS	
EPD'S:	
MARB	+1.13
REA	+0.53
FAT	+0.056
ACTUAL:	
%IMF	5.84
REA	1.24
RIB FAT	0.60
LMY	57.9%



LOT 26

PERFORMANCE							EPD's						
AOD	BW	205D	365D	ADG	F:G	RFI	CE	BW	WW	YW	RFI	CBI	
ET	85	608	1429	5.56	4.15	1.32	+11.0	+0.7	+79	+137	+0.2515	+325	

SEPTEMBER 2021 EPD RANKING:

Top 1% Weaning Weight	Top 1% Yearling Weight	Top 1% Marbling
Top 6% Calving Ease	Top 8% Docility	Top 8% Cdn Balanced Index

From the donor cow N506 who is the dam of our Ashland herd sire. Note the gain of 5 1/2 lbs per day and a real good feed to gain of 4.15:1. If you like good moderate, thick easy-doing cattle, these Payweight's are the answer. Actual Ribeye on Lot 26, 16.83 sq. in.!!

LOT 27

BENCHMARK PAYMASTER 27'20

2165710

Male BFL 27H April 7, 2020

Sire: BASIN PAYWEIGHT 1682
 21AR O LASS 7017
 21AR O LASS F24A
 MCC DAYBREAK
 G A R ANTICIPATION
 G A R 5050 NEW DESIGN 0530
Dam: G A R ANTICIPATION N506
 CONNEALY CONTRAST
 G A R CONTRAST L234
 G A R OBJECTIVE 0J06

CARCASS	
EPD'S:	
MARB	+0.84
REA	+0.54
FAT	+0.035
ACTUAL:	
%IMF	5.41
REA	1.12
RIB FAT	0.47
LMY	58.7%

PERFORMANCE							EPD's						
AOD	BW	205D	365D	ADG	F:G	RFI	CE	BW	WW	YW	RFI	CBI	
ET	82	591	1302	5.31	4.07	-0.31	+7.5	+1.2	+65	+113	+0.0887	-	

SEPTEMBER 2021 EPD RANKING:

Top 6% Marbling	Top 8% WeaningWeight	Top 9% Yearling Weight
Top 10% Milk	Top 15% Docility	

Full brother to Lot 26. You tell me which is the better bull. His maternal brother by G A R Ashland has seen heavy service at Benchmark with 57 calves born this spring.

LOT 28

BENCHMARK PAYMASTER 31'20

2165719

Male BFL 31H April 9, 2020

Sire: BASIN PAYWEIGHT 1682
 21AR O LASS 7017
 21AR O LASS F24A
 MCC DAYBREAK
 G A R ANTICIPATION
 G A R 5050 NEW DESIGN 0530
Dam: G A R ANTICIPATION N506
 CONNEALY CONTRAST
 G A R CONTRAST L234
 G A R OBJECTIVE 0J06

CARCASS	
EPD'S:	
MARB	+0.76
REA	+0.62
FAT	+0.029
ACTUAL:	
%IMF	4.69
REA	1.10
RIB FAT	0.52
LMY	58.4%

PERFORMANCE							EPD's						
AOD	BW	205D	365D	ADG	F:G	RFI	CE	BW	WW	YW	RFI	CBI	
ET	95	594	1394	5.49	4.23	1.43	+7.5	+3.2	+70	+126	+0.2625	-	

SEPTEMBER 2021 EPD RANKING:

Top 2% Yearling Weight	Top 3% WeaningWeight	Top 9% Marbling
Top 10% Carcass Weight	Top 10% Milk	Top 15% Docility

Lot 26, 27 and 28 are full brothers from our embryo program. This guy is a typical 1682 son, thick, deep and moderate. Note the gain and conversion on these brothers.

BULLS SIRED BY BRUIN BENZ

LOT 29 **BENCHMARK MERCEDES 70'20** 2159239
Male BFL 70H April 26, 2020

Sire: BRUIN BENZ 5361

BASIN PAYWEIGHT 006S
BASIN PAYWEIGHT 1682
21AR O LASS 7017
G A R INGENUITY DDC
BRUIN 6759 FOREVER LADY 3327
BRUIN 4168 FOREVER LADY 1040
B/R DESTINATION 727-928
G A R END POINT 5122 DDF
G A R 28 AMBUSH 1949
Dam: BENCHMARK BARBARA 76'15
BENCHMARK RIGHT TIME 9211
BENCHMARK BARBARA 94'11
BENCHMARK BARBARA 9149

CARCASS	
EPD'S:	
MARB	+0.79
REA	+0.39
FAT	+0.043
ACTUAL:	
%IMF	5.56
REA	0.99
RIB FAT	0.35
LMY	59.3%



LOT 29

PERFORMANCE							EPD's					
AOD	BW	205D	365D	ADG	F-G	RFI	CE	BW	WW	YW	RFI	CBI
5	82	598	1207	4.63	4.27	-1.48	+9.0	+0.3	+64	+116	+0.0054	-

SEPTEMBER 2021 EPD RANKING:		
Top 7% Yearling Weight	Top 7% Maternal Calving Ease	Top 8% Marbling
Top 9% Weaning Weight	Top 10% Calving Ease	Top 10% Carcass Weight

A maternal brother by Baseline works for Assar Grinda. Lot 29 has caught our attention since birth. He always catches your eye, looks the part and is very quiet. I think you will like him a bunch. Lot 29 finished # 14 on Growsafe Test .



Sire: Bruin Benz

LOT 30 **BENCHMARK MERCEDES 95'20** 2159218
Male BFL 95H May 1, 2020

Sire: BRUIN BENZ 5361

BASIN PAYWEIGHT 006S
BASIN PAYWEIGHT 1682
21AR O LASS 7017
G A R INGENUITY DDC
BRUIN 6759 FOREVER LADY 3327
BRUIN 4168 FOREVER LADY 1040
G A R INGENUITY
GAR INGENUITY J2024
MAPLECREST EVA 7010
Dam: BENCHMARK NEW LASSIE 92'14
THREE TREES NEXT STEP
BENCHMARK NEW LASSIE 82'11
BENCHMARK NEW LASSIE 662

CARCASS	
EPD'S:	
MARB	+0.35
REA	+0.95
FAT	+0.005
ACTUAL:	
%IMF	3.90
REA	1.37
RIB FAT	0.33
LMY	63.8%

PERFORMANCE							EPD's					
AOD	BW	205D	365D	ADG	F-G	RFI	CE	BW	WW	YW	RFI	CBI
6	93	612	1263	4.52	4.66	0.11	+4.0	+2.9	+72	+128	+0.3392	-

SEPTEMBER 2021 EPD RANKING:		
Top 1% Ribeye	Top 2% Weaning Weight	Top 2% Yearling Weight
Top 4% Carcass Weight	Top 6% Milk	

If you like extra length in a bull, take a look here. Two maternal sisters work at Benchmark'.

LOT 31 **BENCHMARK MERCEDES 140'20** 2159244
Male BFL 140H May 14, 2020

Sire: BRUIN BENZ 5361

BASIN PAYWEIGHT 006S
BASIN PAYWEIGHT 1682
21AR O LASS 7017
G A R INGENUITY DDC
BRUIN 6759 FOREVER LADY 3327
BRUIN 4168 FOREVER LADY 1040
B/R DESTINATION 727-928
G A R END POINT 5122
G A R 28 AMBUSH 1949
Dam: BENCHMARK ELBA 110'15
G A R NEW DESIGN 5050
BENCHMARK ELBA 1'12
BENCHMARK ELBA 01

CARCASS	
EPD'S:	
MARB	+0.58
REA	+0.52
FAT	+0.034
ACTUAL:	
%IMF	4.53
REA	1.14
RIB FAT	0.39
LMY	58.1%

PERFORMANCE							EPD's					
AOD	BW	205D	365D	ADG	F-G	RFI	CE	BW	WW	YW	RFI	CBI
5	77	530	1166	5.05	3.82	-2.80	+10.0	-0.5	+55	+101	-0.1120	-

SEPTEMBER 2021 EPD RANKING:		
Top 7% Birth Weight	Top 7% Maternal Calving Ease	Top 9% Calving Ease

Real moderate heifer bull in Lot 31. Note the gain and conversion. He finished #3 out of 87 bulls on Grow Safe Test.

REFERENCE SIRE

G A R VELOCITY W507



CAA
GENOMIC
ENHANCED
EPDs

CE
+12.0

BW
+1.5

WW
+65

YW
+124

CW
+67

MARB
+1.16

REA
+1.45

DOC
+18

CBI
+293

PERF	AOD	BW	205D	365D
	ET	73	706	1138

VALUE INDEX	\$W	\$F	\$G	\$B	\$C
	+68	+119	+89	+208	+315
RANKING	30%	4%	1%	1%	2%

G A R MOMENTUM

Sire: BRIDGES VELOCITY

BRIDGES DAYBREAK 2100

S S OBJECTIVE T510 OT26 1179389

Dam: G A R OBJECTIVE A706

G A R INTEGRITY T465

G A R PROGRESS

G A R BIG EYE 1770

MCC DAYBREAK 1356843

BRIDGES 5050 NEW DESIGN 910

S S TRAVELER 6807 T510 1033829

S S MISS RITA R011 7R8

G A R INTEGRITY

G A R PRECISION 81

Velocity was our pick of the bulls at the April 2018 Gardiner Sale. He is best described as a true multi-trait sire as indicated by his EPD rankings. His calves come easy, they grow & gain and have tremendous end product merit. He is from the Rocking W Donor A706, a special cow to say the least. Velocity scanned at 9.65% IMF with a 15.3 sq inch ribeye with only 0.21 inch of rib fat.

OWNED WITH GARDINER ANGUS
& ROCKING W ANGUS

8 SONS SELL

- Avg. BW: 86 lbs
- Avg. 205D: 565 lbs.
- Avg. 365D: 1185 lbs

SEPTEMBER 2021 EPD RANKING:

Top 1% Marbling	Top 6% Milk
Top 1% Ribeye	Top 6% Residual ADG
Top 1% Carcass Weight	Top 8% Weaning Weight
Top 1% Fat	Top 10% Maternal Calving Ease
Top 3% Calving Ease	Top 25% CDN Balanced Index
Top 3% Yearling Weight	

BULLS SIRED BY G A R VELOCITY

LOT 32

BENCHMARK VELOCITY 53'20
Male BFL 53H April 20, 2020

2159309



BRIDGES VELOCITY G A R MOMENTUM
Sire: **G A R VELOCITY W507** BRIDGES DAYBREAK 2100
G A R OBJECTIVE A706 S S OBJECTIVE T510 OT26
G A R INTEGRITY T465
G A R NEW DESIGN 5050
G A R BASELINE AB297 G A R OBJECTIVE 648S
Dam: **BENCHMARK MISS COMPLETE 159'16** SUMMITCREST COMPLETE 1P55
G A R COMPLETE 1381 G A R PREDESTINED 2358

CARCASS	
EPD's:	
MARB	+0.92
REA	+1.28
FAT	-0.048
ACTUAL:	
%IMF	4.75
REA	1.28
RIB FAT	0.26
LMY	65.1%

PERFORMANCE							EPD's					
AOD	BW	205D	365D	ADG	F:G	RFI	CE	BW	WW	YW	RFI	CBI
4	76	551	1239	5.07	4.29	-0.15	+15.0	-0.2	+54	+108	+0.4055	-

SEPTEMBER 2021 EPD RANKING:

Top 1% Calving Ease
Top 1% Maternal Calving Ease
Top 10% Yearling Weight
Top 1% Ribeye
Top 4% Marbling
Top 10% Carcass Weight

The 1381 cow on the bottom side produced two sons, Micah 247'13 and Premium 2'15 that served purebred herds, and a son to Snake Valley and a son to Black Coulee. Her only daughter is the dam of Lot 32. Heifer bull.

LOT 33

BENCHMARK VELOCITY 67'20
Male LAA 67H April 25, 2020

2159406

BRIDGES VELOCITY G A R MOMENTUM
Sire: **G A R VELOCITY W507** BRIDGES DAYBREAK 2100
G A R OBJECTIVE A706 S S OBJECTIVE T510 OT26
G A R INTEGRITY T465
B/R DESTINATION 727-928
G A R END POINT 5122 G A R 28 AMBUSH 1949
Dam: **BENCHMARK EVA BLACKBIRD 59'17** WHITESTONE BARON W279
BENCHMARK EVA BLACKBIRD 95'12 BENCHMARK EVA BLACKBIRD 9122

CARCASS	
EPD's:	
MARB	+1.26
REA	+1.07
FAT	-0.020
ACTUAL:	
%IMF	7.32
REA	1.33
RIB FAT	0.31
LMY	62.7%

PERFORMANCE							EPD's					
AOD	BW	205D	365D	ADG	F:G	RFI	CE	BW	WW	YW	RFI	CBI
3	85	541	1179	4.52	4.76	0.29	+8.0	+2.1	+57	+107	-0.7504	-

SEPTEMBER 2021 EPD RANKING:

Top 1% Marbling
Top 10% Maternal Calving Ease
Top 1% Ribeye
Top 15% Yearling Weight
Top 5% Fat

Real nice ultrasound on this guy, 7.32% IMF and an inch and a third of ribeye per cwt. End product merit, sure helps to pay the bills!

Grain Seeding

Packing & Bagging

Corn Planting

SLINGERLAND CATTLE LTD.
Custom Ag Services

KEN SLINGERLAND
403-382 8815
slcattle02@gmail.com

Silaging: Alfalfa, Barley, Wheat, Corn

WESTERN STOCKMAN

WHERE COUNTRY IN THE CITY
MAKES FOR GREAT FAMILY SHOPPING

SAVE 25% ONLINE
CODE: SAVE25
LIMITED TIME OFFER

915 43 ST S, LETHBRIDGE, AB
WWW.WESTERNSTOCKMAN.CA
403-327-0731

BULLS SIRED BY G A R VELOCITY

LOT 34

BENCHMARK VELOCITY 75'20

Male BFL 75H April 26, 2020

2159323

BRIDGES VELOCITY
Sire: **G A R VELOCITY W507**
G A R OBJECTIVE A706
G A R PROPHECY
Dam: **BENCHMARK LUCY 7'17**
BENCHMARK LUCY 23'15
BENCHMARK LUCY 0131

G A R MOMENTUM

BRIDGES DAYBREAK 2100

S S OBJECTIVE T510 OT26

G A R INTEGRITY T465

C R A BEXTOR 872 5205 608

G A R OBJECTIVE 1885 F

BENCHMARK MIDLAND 753

BENCHMARK LUCY 0131

CARCASS	
EPD'S:	
MARB	+1.05
REA	+0.83
FAT	-0.006
ACTUAL:	
%IMF	5.76
REA	1.25
RIB FAT	0.31
LMY	61.3%

PERFORMANCE							EPD's					
AOD	BW	205D	365D	ADG	F:G	RFI	CE	BW	WW	YW	RFI	CBI
3	80	521	1098	4.83	5.25	2.80	+11.0	+0.8	+57	+104	+0.8277	-

SEPTEMBER 2021 EPD RANKING:

Top 2% Marbling
Top 10% Maternal Calving Ease
Top 4% Ribeye
Top 10% Milk
Top 6% Calving Ease
Top 15% Yearling Weight

A maternal brother by Baseline works at Brian Bohnets'.

LOT 35

BENCHMARK VELOCITY 98'20

Male BFL BFL 98H May 1, 2020

2159234



BRIDGES VELOCITY
Sire: **G A R VELOCITY W507**
G A R OBJECTIVE A706
G A R PROPHECY
Dam: **BENCHMARK ERELITE 56'15**
BENCHMARK ERELITE 134'13
BENCHMARK ERELITE 042

G A R MOMENTUM

BRIDGES DAYBREAK 2100

S S OBJECTIVE T510 OT26

G A R INTEGRITY T465

C R A BEXTOR 872 5205 608

G A R OBJECTIVE 1885

G A R DAYBREAK 6860 DDC

BENCHMARK ERELITE 042

CARCASS	
EPD'S:	
MARB	+1.17
REA	+1.00
FAT	+0.003
ACTUAL:	
%IMF	7.39
REA	1.18
RIB FAT	0.33
LMY	62.2%

PERFORMANCE							EPD's					
AOD	BW	205D	365D	ADG	F:G	RFI	CE	BW	WW	YW	RFI	CBI
5	95	643	1342	5.16	4.18	-2.0	+7.0	+3.8	+80	+140	+0.4849	-

SEPTEMBER 2021 EPD RANKING:

Top 1% Marbling
Top 1% Yearling Weight
Top 1% Ribeye
Top 4% Carcass Weight
Top 1% Weaning Weight

Lot 35 fits the bill, long, deep with good thickness. He will leave calves that will make money. He gained over 5 lbs ADG, converted 4 to 1 and on ultrasound was amazing! Buy them for what they will produce.



LOT 35

LOT 36

BENCHMARK VELOCITY 110'20

Male LAA 110H May 4, 2020

2159399

BRIDGES VELOCITY
Sire: **G A R VELOCITY W507**
G A R OBJECTIVE A706
G A R PREDESTINED
Dam: **BENCHMARK LAVENDER LADY 50'11**
BENCHMARK LAVENDER LADY 918
BENCHMARK LAVENDER LADY 5152

G A R MOMENTUM

BRIDGES DAYBREAK 2100

S S OBJECTIVE T510 OT26

G A R INTEGRITY T465

G A R PREDESTINED

G A R T510 TRAVELER 264

STANDARD HILL PAYOFF 20P

BENCHMARK LAVENDER LADY 5152

CARCASS	
EPD'S:	
MARB	+0.68
REA	+0.82
FAT	+0.002
ACTUAL:	
%IMF	4.32
REA	1.18
RIB FAT	0.31
LMY	61.3%

PERFORMANCE							EPD's					
AOD	BW	205D	365D	ADG	F:G	RFI	CE	BW	WW	YW	RFI	CBI
9	90	552	1147	4.37	4.67	-0.62	+5.0	+2.9	+54	+103	+0.4002	-

SEPTEMBER 2021 EPD RANKING:

Top 4% Ribeye
Top 20% Yearling Weight
Top 10% Marbling
Top 20% Milk
Top 15% Carcass Weight
Top 20% Maternal Calving Ease

The dam Lavender Lady 50'11 has not skipped a beat since calving as a two-year-old. She has four sons in breeding pastures and a daughter in production at Benchmark'.

BULLS SIRED BY G A R VELOCITY

LOT 37

BENCHMARK VELOCITY 131'20

2159173

Male BFL 131H May 11, 2020



BRIDGES VELOCITY
Sire: **G A R VELOCITY W507**
G A R OBJECTIVE A706
BENCHMARK RIGHT TIME 9211
Dam: **BENCHMARK BARBARA 94'11**
BENCHMARK BARBARA 9149
BENCHMARK BARBARA 70013

G A R MOMENTUM
BRIDGES DAYBREAK 2100
S S OBJECTIVE T510 OT26
G A R INTEGRITY T465
ROYAL RIGHT TIME DRCC 6063S
AAF BLACKCAP 15F DDF
S S TRAVELER 6807 T510
BENCHMARK BARBARA 70013

CARCASS EPD'S:	
MARB	+1.03
REA	+0.88
FAT	-0.027
ACTUAL:	
%IMF	6.02
REA	1.15
RIB FAT	0.27
LMY	62.5%

PERFORMANCE							EPD's						
AOD	BW	205D	365D	ADG	F-G	RFI	CE	BW	WW	YW	RFI	CBI	
9	94	598	1247	4.96	4.20	-0.99	+9.0	+2.1	+58	+110	+0.1864	-	

SEPTEMBER 2021 EPD RANKING:

Top 2% Marbling	Top 2% Ribeye	Top 3% Fat
Top 10% Calving Ease	Top 10% Maternal Calving Ease	Top 10% Yearling Weight
Top 10% Carcass Weight	Top 20% Weaning Weight	



LOT 37

5 lb ADG with good conversion on Lot 37. His dam 94'11 has a son at CJD Ranching a "Buy Back" participant and their calves Gain & Grade. She also has three daughters at Benchmark and a daughter at Ranchland Cattle Co. This guy finished #18 out of 87 bulls on Growsafe Test.

LOT 38

BENCHMARK VELOCITY 185'20

Male BFL 185H May 29, 2020

2159220

BRIDGES VELOCITY
Sire: **G A R VELOCITY W507**
G A R OBJECTIVE A706
BENCHMARK MIDLAND 753
Dam: **BENCHMARK QUEEN 115'14**
BENCHMARK QUEEN 930
RIVERBEND RITA R001

G A R MOMENTUM
BRIDGES DAYBREAK 2100
S S OBJECTIVE T510 OT26
G A R INTEGRITY T465
BR MIDLAND
PF 104 RUTH 3131
S A V 8180 TRAVELER 004
RIVERBEND RITA R001

CARCASS EPD'S:	
MARB	+0.90
REA	+0.81
FAT	+0.003
ACTUAL:	
%IMF	5.99
REA	1.30
RIB FAT	0.30
LMY	60.5%

PERFORMANCE							EPD's						
AOD	BW	205D	365D	ADG	F-G	RFI	CE	BW	WW	YW	RFI	CBI	
6	89	552	1093	4.17	4.76	-1.10	+9.0	+1.5	+51	+93	+0.1378	-	

SEPTEMBER 2021 EPD RANKING:

Top 5% Marbling	Top 5% Ribeye	Top 10% Calving Ease
Top 10% Maternal Calving Ease		

This Midland dam has produced sons for Mulder Cattle, Sheldon Anderson and Bar X Ranch; a participant in our "Buy Back" program. Lot 38 placed #17 on our Growsafe Test.

LOT 39

BENCHMARK VELOCITY 205'20

Male BFL 205H June 10, 2020

2159224

BRIDGES VELOCITY
Sire: **G A R VELOCITY W507**
G A R OBJECTIVE A706
A A R TEN X 7008 S A
Dam: **BENCHMARK ELSA ERICA 213'14**
BENCHMARK PREDESTINED 8301
BENCHMARK ELSA ERICA 240'12
BENCHMARK ELSA ERICA 9274

G A R MOMENTUM
BRIDGES DAYBREAK 2100
S S OBJECTIVE T510 OT26
G A R INTEGRITY T465
MYTTY IN FOCUS
A A R LADY KELTON 5551
BENCHMARK PREDESTINED 8301
BENCHMARK ELSA ERICA 9274

CARCASS EPD'S:	
MARB	+0.87
REA	+0.77
FAT	-0.026
ACTUAL:	
%IMF	3.95
REA	1.17
RIB FAT	0.25
LMY	60.7%

PERFORMANCE							EPD's						
AOD	BW	205D	365D	ADG	F-G	RFI	CE	BW	WW	YW	RFI	CBI	
6	83	564	1131	4.65	4.96	0.93	+9.5	+1.3	+55	+96	+0.5131	-	

SEPTEMBER 2021 EPD RANKING:

Top 3% Fat	Top 5% Marbling	Top 7% Ribeye
Top 9% Calving Ease	Top 10% Maternal Calving Ease	

Youngest bull to sell. The heat and short pasture was hard on these younger cattle, but they are bouncing back. The dam is an own daughter of Ten X who shows 19,904 progeny analyzed with 7,321 daughters on the registry.

BULLS SIRED BY CAN'T MISS

LOT 40

BENCHMARK ON TARGET 106'20

2159399

Male BFL 106H May 4, 2020



G A R SURE FIRE
Sire: H P C A CAN'T MISS M17
MLC RITA 4142
G A R INNOVATION 3002G
Dam: BENCHMARK ERICA EVA 15'18
BENCHMARK ERICA EVA 78'13
BENCHMARK ERICA EVA 9147

CONNEALY IN SURE 8524
CHAIR ROCK 5050 G A R 8086
EXAR DENVER 2002B D
H P C A 5050 351
SYDGEN TRUST 6228
GOODE MANDATE 1751
TRIARA MADE TO ORDER 366Y
BENCHMARK ERICA EVA 9147

CARCASS	
EPD'S:	
MARB	+1.42
REA	+0.80
FAT	+0.040
ACTUAL:	
%IMF	10.03
REA	1.20
RIB FAT	0.47
LMY	57.4%

PERFORMANCE							EPD's					
AOD	BW	205D	365D	ADG	F:G	RFI	CE	BW	WW	YW	RFI	CBI
2	77	612	1257	4.28	4.01	-3.59	+11.0	+0.5	+59	+104	-0.3194	-

SEPTEMBER 2021 EPD RANKING:

Top 1% Marbling
Top 5% Ribeye
Top 15% Yearling Weight
Top 1% Milk
Top 6% Calving Ease
Top 1% Docility
Top 15% Weaning Weight

The two-year-old dam is by Innovation who is in the Top 3% for Dry Matter Intake. With feed costs out of control this becomes more & more important. Lot 40 was our highest scanning bull for % IMF and he was #1 on Grow Safe Test!

LOT 41

BENCHMARK ON TARGET 151'20

2159377

Male BFL 151H May 19, 2020



G A R SURE FIRE
Sire: H P C A CAN'T MISS M17
MLC RITA 4142
G A R END POINT 5122
Dam: BENCHMARK BELLE 170'18
BENCHMARK BELLE 124'15
BENCHMARK BELLE 225'12

CONNEALY IN SURE 8524
CHAIR ROCK 5050 G A R 8086
EXAR DENVER 2002B D
H P C A 5050 351
B/R DESTINATION 727-928
G A R 28 AMBUSH 1949
BENCHMARK ABERDEEN 188'12

CARCASS	
EPD'S:	
MARB	+1.62
REA	+0.63
FAT	+0.037
ACTUAL:	
%IMF	5.93
REA	1.23
RIB FAT	0.43
LMY	58.4%

PERFORMANCE							EPD's					
AOD	BW	205D	365D	ADG	F:G	RFI	CE	BW	WW	YW	RFI	CBI
2	87	587	1295	4.76	4.96	1.87	+16.0	-0.2	+49	+103	+0.4449	+324

SEPTEMBER 2021 EPD RANKING:

Top 1% Calving Ease
Top 1% Maternal Calving Ease
Top 20% Yearling Weight
Top 1% Marbling
Top 6% Docility
Top 6% Canadian Balanced Index
Top 1% Milk
Top 20% Ribeye

Heifer bulls in Lots 40 and 41. End Product Merit on these two bulls by Can't Miss.



Sire: HP C A CAN'T MISS M17

LOT 41



Embryo Transfer Services
IVF
Certified for Exportable Embryo Production
Export Qualified Semen Collection and Bull Stud
Owner's Use Semen
Embryo & Semen Storage & Distribution

Ph: 587.887.1934
Email: embryos@bowvalleygenetics.com
Web: www.bowvalleygenetics.com

BULLS SIRED BY THE ROCK

LOT 42

BENCHMARK THE ROCK 37'20

2159357

Male BFL 37H April 14, 2020

NICHOLS EXTRA K205
K C F BENNETT SOUTHSIDE
K C F MISS 208 S11
Sire: K C F BENNETT THEROCK A473
GAR-EGL PROTEGE
K C F MISS PROTEGE W148
BREELA OF CONANGA 3991
BALDRIDGE WAYLON W34
44 ARSENAL 4W07
DZ ND 5050 OF15
Dam: BENCHMARK BARBARA ROSE 12'18
BENCHMARK MICAH 247'13
BENCHMARK BARBARA ROSE 83'16
BENCHMARK BARBARA ROSE891

CARCASS	EPD'S:
MARB	+1.13
REA	+0.82
FAT	+0.006
ACTUAL:	
%IMF	7.35
REA	1.14
RIB FAT	0.40
LMY	61%

PERFORMANCE							EPD's					
AOD	BW	205D	365D	ADG	F-G	RFI	CE	BW	WW	YW	RFI	CBI
2	82	642	1408	5.34	4.15	0.22	+7.0	+2.7	+80	+148	+0.2950	-

SEPTEMBER 2021 EPD RANKING:											
Top 1% Marbling				Top 1% Carcass Weight				Top 1% Weaning Weight			
Top 1% Yearling Weight				Top 4% Ribeye				Top 4% Milk			
Top 6% Docility											

A nice blend of genetics being sired by The Rock, from an Arsenal dam who is out of a Micah daughter. On Grow Safe Test this guy gained 5.34 lbs per day and converted 4.15:1. Ask your feedlot friends what conversion they achieve, likely 6:1.



LOT 42

Sire: K C F BENNETT THEROCK

Jenna Nixdorff, B.A
Sales & Service Representative
M: 1 403.635.1314
E: jenna.nixdorff@trouwnutrition.com

Proudly fed by:

trouw nutrition
a Nutreco company

Trouw Nutrition Canada
1810-39 St. North Lethbridge, Alberta
T1H 5J2

Great neighbours know when to listen.

ATB has a deeply rooted relationship with Alberta's farmers. It remains at the heart of everything we do today. It starts with really listening—because not only are we Albertans, we're also your neighbours. Our dedicated experts can create custom solutions that will help your farm and our province grow. After all, we're in this together.

Stop by to talk with us today.

atb.com/agriculture

ATB *listens*



REFERENCE SIRE

RED BASIN EXT 45T5



CAA
GENOMIC
ENHANCED
EPDs

CE
0.0

BW
+3.9

WW
+50

YW
+83

CW
+45

MARB
+0.89

REA
+0.52

DOC
+12

CBI
+278

RED BASIN EXT 1925

Sire: RED BASIN EXT 5233

RED BASIN PRIMROSE 2043

C A FUTURE DIRECTION 5321

Dam: BASIN ROSE 710P

RED BASIN ROSE F521

BASIN EXT H695

RED BASIN LAKOTA J333

RED BFCK CHEROKEE CNYN 4912

RED BASIN PRIMROSE 0854

G A R PRECISION 1680

C A MISS POWER FIX 308

RED LMAN NONE BETTER 9604

RED BASIN PRIMROSE 258

PERF	AOD	BW	205D	365D
	3	87	743	1331

Well, look who's back! You might ask why use a 13 year-old bull. The answer is, he does a lot of things right. Check out his rankings below. At Benchmark® we are about end product merit, marbling, ribeye, and carcass weight. EXT 45T5 checks those boxes along with a bunch of others, such as weaning weight, yearling weight, milk, heifer pregnancy and foot structure. His pedigree reads very, very well!

OWNED WITH BASIN ANGUS
& KIRK WILDMAN

3 SONS SELL

- Avg. BW: 82 lbs
- Avg. 205D: 664 lbs
- Avg. 365D: 1,283 lbs

SEPTEMBER 2021 EPD RANKING:

Top 1% Marbling
Top 2% Carcass Weight
Top 2% CDN Balanced Index
Top 10% Weaning Weight

Top 10% Yearling Weight
Top 10% Milk
Top 10% Heifer Pregnancy

BULLS SIRED BY RED BASIN EXT 45T5

LOT 43

RED GROVES DUKE 1H

Male ALY 1H April 1, 2020

2193718



	RED BASIN EXT 1925	
RED BASIN EXT 5233	RED BASIN PRIMROSE 2043	
Sire: RED BASIN EXT 45T5	C A FUTURE DIRECTION 5321	
BASIN ROSE 710P	RED BASIN ROSE F521 OSF	
	RED BROWN ALLIANCE X7795	
RED DUNN BETTER A500	RED LSF SWEETNESS J1358	
Dam: RED BENCHMARK FAYETTE 63'15	RED 5L TRAVLIN EXP 1892-6295	
RED BENCHMARK FAYETTE 017	RED FAYETTE OF BENCHMARK 610	

CARCASS	
EPD'S:	
MARB	+0.74
REA	+0.37
FAT	+0.037
ACTUAL:	
%IMF	4.52
REA	1.11
RIB FAT	0.51
LMY	58.6%

PERFORMANCE							EPD's						
AOD	BW	205D	365D	ADG	F:G	RFI	CE	BW	WW	YW	RFI	CBI	
5	75	717	1311	4.45	4.86	1.48	+9.0	+0.1	+43	+67	+0.0428	+258	

SEPTEMBER 2021 EPD RANKING:

Top 1% Marbling
Top 8% Canadian Balanced Index

Top 1% Milk
Top 10% Calving Ease

Lot 43 comes from Alyssa Groves, the dam a result of a 4-H heifer project. Alyssa entered university this fall so help her out on this good bull. The Groves family are long, long time dear friends. Alyssa has sold two maternal brothers to Fath Farms and Rafter F Ranch.



LOT 43

LOT 44

RED BENCHMARK MONTANA 11H

Male BFR 11H April 6, 2020

2159552



	RED BASIN EXT 1925	
RED BASIN EXT 5233	RED BASIN PRIMROSE 2043	
Sire: RED BASIN EXT 45T5	C A FUTURE DIRECTION 5321	
BASIN ROSE 710P	RED BASIN ROSE F521 OSF	
	RED BROWN ALLIANCE X7795	
RED DUNN BETTER A500	RED LSF SWEETNESS J1358	
Dam: RED BENCHMARK BURGESS 25'18	RED 5L TRAVLIN EXP 1892-6295	
RED BENCHMARK BURGESS 020	RED BENCHMARK BURGESS 675	

CARCASS	
EPD'S:	
MARB	+0.85
REA	+0.64
FAT	+0.022
ACTUAL:	
%IMF	5.77
REA	1.17
RIB FAT	0.33
LMY	61.9%

PERFORMANCE							EPD's						
AOD	BW	205D	365D	ADG	F:G	RFI	CE	BW	WW	YW	RFI	CBI	
2	90	627	1269	4.37	4.77	0.09	+3.0	+3.9	+54	+88	+0.2528	+277	

SEPTEMBER 2021 EPD RANKING:

Top 1% Marbling
Top 4% Milk
Top 8% Yearling Weight

Top 3% Cdn Balanced Index
Top 4% Ribeye

Top 4% Carcass Weight
Top 5% Weaning Weight

These three bulls by Basin EXT 45T5 will leave calves that will get big and will grade and the daughters will milk and bring home calves that will push the scale down. Lot 43 and 44 are 7/8th brothers.



LOT 44



D & S INSURANCE SERVICES

JON MCKENZIE

304 - 2 STREET, P.O. BOX 357, WARNER, AB. T0K2L0

Telephone: (403) 642-2032 Fax: (403) 642-2112

E-MAIL: jon@dsinsuranceservices.ca

Toll Free in Alberta: 1-888-488-0188

FOR ALL YOUR INSURANCE NEEDS
FARM • HOME • AUTO • TRAVEL • LIVESTOCK • EQUINE • HAIL

BULLS SIRED BY RED BASIN EXT 45T5

LOT 45

RED BENCHMARK MONTANA 12H 2159555

Male BFR 12H April 6, 2020



RED BASIN EXT 5233
 Sire: **RED BASIN EXT 45T5**
 BASIN ROSE 710P
 RED DUNN BETTER A500
 Dam: **RED BENCHMARK CHETA 47'18**
 RED BENCHMARK CHETA 23'14
 RED BENCHMARK CHETA 6'12

RED BASIN EXT 1925
 RED BASIN PRIMROSE 2043
 C A FUTURE DIRECTION 5321
 RED BASIN ROSE F521 OSF
 RED BROWN ALLIANCE X7795
 RED LSF SWEETNESS J1358 P4085
 RED LSF RAB COMMITMENT 2792Z
 RED BENCHMARK CHETA 23'14
 RED BENCHMARK CHETA 6'12

CARCASS	
EPD'S:	
MARB	+0.57
REA	+0.59
FAT	+0.014
ACTUAL:	
%IMF	4.62
REA	1.21
RIB FAT	0.36
LMY	61.6%

PERFORMANCE							EPD's					
AOD	BW	205D	365D	ADG	F:G	RFI	CE	BW	WW	YW	RFI	CBI
2	81	649	1268	4.37	4.70	0.68	+5.0	+2.4	+61	+97	-0.0478	-

SEPTEMBER 2021 EPD RANKING:

Top 1% Weaning Weight
 Top 3% Yearling Weight
 Top 3% Marbling
 Top 8% Ribeye
 Top 8% Carcass Weight
 Top 10% Milk

Remember these three bulls by Red Basin EXT 45T5 are paternal brothers to Benchmark Better Beef, the Grand Champion at Denver, a few years back, no easy feat.



Benchmark Better Beef, Grand Champion Bull, Denver 2013

PRO
CORRAL



C
LEANERS

403-892-2397

procorralcleaners.com

OUR READERS ARE YOUR CUSTOMERS!

Your advertising expenditure is reaching a potential bull buyer!

Alberta BEEF
BEEF illustrated

- No wasted circulation to farm homes NOT in the beef business
- Delivered by addressed mail ONLY
- Well-read and respected publications!

Call 403-250-1090 or visit beefnews.com for more information.

REFERENCE SIRE

RED LIKE IT PROFIT BUILDER 7215E



CAA
GENOMIC
ENHANCED
EPDs

CE
+8.0

BW
-1.7

WW
+38

YW
+72

CW
+23

MARB
+0.91

REA
+0.29

DOC
+15

CBI
+249

RED LSF TAKEOVER 9943W
Sire: RED H2R PROFITBUILDER B403
RED BROWN MS P707
RED LSF HERDBUILDER 1058Y
Dam: REED TBJR REBELLA 409
RED RAISLAND REBELLA 146-737
RED HXC CONQUEST 4405P
RED LSF WIDELOAD R5014
RED BECKTON NEBULA P P707
RED BROWN MS MISSION STMITT6963
RED BECKTON EPIC R397
RED LSF COVER GIRL S6076
RED SUNR WIDE FORCE 339W
RED RAISLAND REBELLA 737-504H

PERF	AOD	BW	205D	365D
	3	74	651	1156

Profit Builder comes to us from Mike Tilleman's, I Like It Like That Red Angus at Chinook, Montana. He was easy to find sale day with the presence of a herd bull, with thickness, depth of body and a great hind quarter. His calves come very easy, are very moderate, and on ultrasound and when put on the rail, marble big time! Be sure to note his marbling EFD at +0.91. Real hard to find a Red Angus bull with a marbling EPD over +0.90.

OWNED WITH I LIKE IT LIKE THAT
RED ANGUS RANCH

8 SONS SELL

- Avg. BW: 81 lbs
- Avg. 205D: 597 lbs
- Avg. 365D: 1,180 lbs

SEPTEMBER 2021 EPD RANKING:

Top 1% Marbling
Top 6% Milk
Top 9% Birth Weight
Top 10% CDN Balanced Index
Top 15% Calving Ease
Top 15% Residual ADG

BULLS SIRED BY RED LIKE IT PROFIT BUILDER

LOT 46

RED BENCHMARK FOR PROFIT 22H 2159487
Male BFR 22H April 23, 2020

RED H2R PROFITBUILDER	RED LSF TAKEOVER 9943W	CARCASS	
Sire: RED LIKE IT PROFIT BUILDER 7215E	RED BROWN MS P707	EPD's:	
RED TBJR REBELLA 409	RED LSF HERDBUILDER 1058Y	MARB	+0.83
	RED RAISLAND REBELLA 146-737	REA	+0.33
	RED BUF CRK CHF 824-1658	FAT	+0.005
	RED MRM 1431 8611 9109	ACTUAL:	
Dam: RED BENCHMARK LAKIMA 011	RED TED GLACIER MARIAS 103N	%IMF	6.64
RED BENCHMARK LAKIMA 674	RED LAZY MC LAKIMA 11F	REA	1.09
		RIB FAT	0.36
		LMY	59.0%

PERFORMANCE							EPD's					
AOD	BW	205D	365D	ADG	F:G	RFI	CE	BW	WW	YW	RFI	CBI
10	73	539	1094	3.46	5.65	-0.04	+8.0	-1.8	+36	+62	+0.0261	-

SEPTEMBER 2021 EPD RANKING:

Top 1% Marbling
Top 15% Milk
Top 8% Birth Weight
Top 15% Calving Ease

The dam by Cherokee CNYN 4912 has sons at C.O. Johnson's and Schooten and Sons, with a daughter in production at Benchmark. Lot 46 is moderate for sure and a tank. Heifer Bull!

LOT 47

RED BENCHMARK FOR PROFIT 29H 2159538
Male BFR 29H April 28, 2020



RED H2R PROFITBUILDER	RED LSF TAKEOVER 9943W	CARCASS	
Sire: RED LIKE IT PROFIT BUILDER 7215E	RED BROWN MS P707	EPD's:	
RED TBJR REBELLA 409	RED LSF HERDBUILDER 1058Y	MARB	+0.67
	RED RAISLAND REBELLA 146-737	REA	+0.18
	RED LSF MEW GAME CHANGER 1613Y	FAT	+0.014
	RED BENCHMARK TRANSITION 10'14	ACTUAL:	
	RED BENCHMARK LANA 60'11	%IMF	5.05
Dam: RED BENCHMARK DURUBA 41'17	WK DATELINE 7270	REA	1.26
RED BENCHMARK DURUBA 07	RED DURUBA BENCHMARK 311	RIB FAT	0.40
		LMY	59.5%

PERFORMANCE							EPD's					
AOD	BW	205D	365D	ADG	F:G	RFI	CE	BW	WW	YW	RFI	CBI
3	76	673	1221	3.77	5.60	1.28	+8.0	-0.7	+47	+82	+0.5337	+218

SEPTEMBER 2021 EPD RANKING:

Top 1% Marbling
Top 15% Calving Ease
Top 15% Yearling Weight
Top 6% Maternal Calving Ease
Top 15% Birth Weight
Top 10% Cdn Balanced Index
Top 15% Weaning Weight

Heifer bull from a Transition Daughter. Much like Lot 46, moderate, deep and thick as you can make.

Dam's Sire: **BENCHMARK TRANSITION**



LOT 46

KENDRA DESIGN INC

GRAPHIC DESIGN

ads, logos, brochures, annual reports,
BULL SALE CATALOGUES and more!

Call today for a quote on your next project!

kendradesign@gmail.com • 780-623-2387

kendradesign.myportfolio.com



BULLS SIRED BY RED LIKE IT PROFIT BUILDER

LOT 48

RED BENCHMARK FOR PROFIT 30H

Male BFR 30H April 1528, 2020

2159540



RED LSF TAKEOVER 9943W
 RED H2R PROFITBUILDER
 RED BROWN MS P707
Sire: RED LIKE IT PROFIT BUILDER 7215E
 RED LSF HERDBUILDER 1058Y
 RED TBJR REBELLA 409
 RED RAISLAND REBELLA 146-737
 RED LSF MEW GAME CHANGER 1613
 RED BENCHMARK TRANSITION 10'14
 RED BENCHMARK LANA 60'11
Dam: RED BENCHMARK LULANNA 52'17
 RED BADLANDS NET WORTH 23U
 RED BENCHMARK LULANNA 6'11
 RED LULANNA OF BENCHMARK 8114

CARCASS	
EPD'S:	
MARB	+0.43
REA	+0.28
FAT	+0.002
ACTUAL:	
%IMF	4.89
REA	1.32
RIB FAT	0.41
LMY	60.4%

LOT 49

RED BENCHMARK FOR PROFIT 35H

Male BFR 35H May 1, 2020

2159488



RED LSF TAKEOVER 9943W
 RED H2R PROFITBUILDER
 RED BROWN MS P707
Sire: RED LIKE IT PROFIT BUILDER 7215E
 RED LSF HERDBUILDER 1058Y
 RED TBJR REBELLA 409
 RED RAISLAND REBELLA 146-737
 RED 5L TRAVLIN EXP 1892-6295
 RED 5L NORSEMAN EXPRESS
Dam: RED BENCHMARK BURGESS 020
 RED LAZY MC PRECISION 20N
 RED BENCHMARK BURGESS 675
 BENCHMARK BURGESS 207'97

CARCASS	
EPD'S:	
MARB	+0.56
REA	+0.39
FAT	+0.021
ACTUAL:	
%IMF	5.01
REA	1.26
RIB FAT	0.40
LMY	59.5%

PERFORMANCE							EPD's					
AOD	BW	205D	365D	ADG	F:G	RFI	CE	BW	WW	YW	RFI	CBI
3	70	626	1156	4.14	6.00	4.14	+2.0	+0.4	+43	+75	+0.9254	+209

SEPTEMBER 2021 EPD RANKING:

Top 6% Milk

Top 10% Marbling

Top 25% Yearling Weight

PERFORMANCE							EPD's					
AOD	BW	205D	365D	ADG	F:G	RFI	CE	BW	WW	YW	RFI	CBI
10	80	577	1146	4.23	5.38	1.90	+9.0	-0.7	+38	+64	+0.7298	+203

SEPTEMBER 2021 EPD RANKING:

Top 3% Marbling

Top 4% Milk

Top 10% Calving Ease

Top 15% Birth Weight

Three-quarter brother to Lot 47. Very moderate bull in Lot 48. Only a 70lb birth weight, but should be used on larger heifers. Net Worth brings the calving ease down.

The dam has stood the test of time, with sons at Shawn Rodgers, Ewelme Farming, Egg Lake Range, and Brent Barbero and a daughter in production at Benchmark. Heifer Bull!

LOT 49



CORN SEEDS
ROOTED IN TRADITION

FROM ONE CATTLE PRODUCER TO ANOTHER, TRUST OUR EXPERIENCE AS ALL THE PRODUCTS WE SELL ARE USED ON OUR OWN ANGUS CATTLE OPERATION

PEDIGREEED SEED VARIETIES

SPRING TRITICALE THERON, AARON, RYAN, AD STAMPEDE WINTER TRITICALE LORNA, WATSON, ROBERT, AD PROVIDER BARLEY CDC, HEDDEN, NEARLESS, AAF, BARLEY WHEAT AC, WOLAN, ONE, 2047M PEAS WINTER WHEAT AAC, NOLAN, AC, EMERSON	FULL RYE OFFICIAL, RYE, HYBRID-FULL RYE SOYBEAN/SOYAB-GRASS HAYGUTTER, BAYFIELD SOFT WHEAT CORN CROPS ACORN AC, CORN, MILLETS, ITALIAN, CORN, RYE, GRASS, BRASSICA, HAY, VETCH, HAY, TURP, ETC.
--	--

- BLENDING/BAGGING OPTIONS AVAILABLE -

GRASS/SPRING TRITICALE BLEND | PEA/SPRING TRITICALE BLEND
 CEREAL GRASSING BLEND | CUSTOM BLENDS AVAILABLE, PLEASE CONTACT

DEPENDABLE SUPPLY | TRITICALE SPECIALISTS | NO-HASSLE SALES

SALES@CORNSEEDS.COM
 CORNSEEDS.COM

CALL TO BOOK
 YOUR FORAGE SEEDS
 WHITNEY CORNS | 403-360-0032
 BRYAN CORNS | 403-360-0000

BULLS SIRED BY RED LIKE IT PROFIT BUILDER

LOT 50

RED BENCHMARK FOR PROFIT 47H 2159490

Male BFR 47H May 4, 2020



RED H2R PROFITBUILDER	RED LSF TAKEOVER 9943W	CARCASS	
Sire: RED LIKE IT PROFIT BUILDER 7215E	RED BROWN MS P707	EPD's:	
RED TBJR REBELLA 409	RED LSF HERDBUILDER 1058Y	MARB	+0.71
RED BASIN EXT 45T5	RED RAISLAND REBELLA 146-737	REA	+0.48
Dam: RED BENCHMARK VIRGINIADOLL 050	RED BASIN EXT 5233	FAT	+0.009
RED VIRGINIADOLL BENCHMARK 353	BASIN ROSE 710P	ACTUAL:	
RED ROD SYSAH 223L8114	RED LPC EMPEROR 42H	%IMF	5.42
	RED ROD SYSAH 223L8114	REA	1.16
		RIB FAT	0.40
		LMY	58.8%

PERFORMANCE							EPD's				
AOD	BW	205D	365D	ADG	F:G	RFI	CE	BW	WW	YW	RFI
10	89	538	1187	4.61	4.96	1.41	-2.0	+3.1	+50	+94	+0.4900

SEPTEMBER 2021 EPD RANKING:

Top 1% Marbling	Top 4% Yearling Weight	Top 8% Carcass Weight
Top 10% Weaning Weight	Top 15% Milk	Top 20% Ribeye

LOT 51

RED BENCHMARK FOR PROFIT 54H 2159532

Male BFR 54H May 8, 2020



RED H2R PROFITBUILDER	RED LSF TAKEOVER 9943W	CARCASS	
Sire: RED LIKE IT PROFIT BUILDER 7215E	RED BROWN MS P707	EPD's:	
RED TBJR REBELLA 409	RED LSF HERDBUILDER 1058Y	MARB	+0.49
RED BIEBER MAKIN HAY 9913	RED RAISLAND REBELLA 146-737	REA	+0.48
Dam: RED BENCHMARK COCOA 417	RED BIEBER MAKE MIMI 7249	FAT	-0.025
RED BENCHMARK COCOA 2015	RED BIEBER ADELLE 8958	ACTUAL:	
RED BENCHMARK COCOA 1111	RED LSF MEW GAME CHANGER 1613Y	%IMF	4.08
	RED BENCHMARK COCOA 1111	REA	1.15
		RIB FAT	0.31
		LMY	61.3%

PERFORMANCE							EPD's				
AOD	BW	205D	365D	ADG	F:G	RFI	CE	BW	WW	YW	RFI
3	95	640	1268	4.37	4.78	0.00	+1.0	+3.0	+58	+105	+0.2443

SEPTEMBER 2021 EPD RANKING:

Top 1% Yearling Weight	Top 1% Milk	Top 2% Weaning Weight
Top 2% Residual ADG	Top 6% Carcass Weight	Top 6% Marbling
Top 6% Canadian Balanced Index		Top 20% Ribeye

From a ten-year-old dam, she designated "Premier" by the Canadian Angus Assoc. She has a son at James McKinlay in Ontario and three daughters in production at Benchmark'.

Dam by Makin Hay has a daughter in production. This guy gets a bit more frame from the bottom side of his pedigree. Checks many of the boxes!



LOT 51

GIVE AWAY

A WESTERN STOCKMAN GIFT CARD

FOR THE TOP VOLUME BUYER OF RED BULLS

CELEBRATING OVER 60 YEARS Est. 1958
A Name You Can Trust

Providing Quality Modular and Ready to Move Housing for Alberta Since 1958
1-800-334-7059
2930 Fairway Street South Lethbridge, Alberta
www.mandkhomesales.com

BULLS SIRED BY RED LIKE IT PROFIT BUILDER

LOT 52

RED BENCHMARK FOR PROFIT 68H 2159491

Male BFR 68H May 16, 2020



RED LSF TAKEOVER 9943W
RED H2R PROFITBUILDER
 RED BROWN MS P707
Sire: RED LIKE IT PROFIT BUILDER 7215E
 RED LSF HERDBUILDER 1058Y
RED TBJR REBELLA 409
 RED RAISLAND REBELLA 146-737
 RED BFCK CHEROKEE CNYN 4912
RED BENCHMARK GRAND CANYON 816
 RED RIR REBELLO 35L
Dam: RED BENCHMARK QUEEN 28'11
 RED 5L TRAVLIN EXP 1892-6295
RED QUEEN OF BENCHMARK 984
 RED QUEEN OF BENCHMARK 67

CARCASS	
EPD'S:	
MARB	+0.99
REA	+0.48
FAT	-0.011
ACTUAL:	
%IMF	6.31
REA	1.13
RIB FAT	0.40
LMY	57.8%

LOT 53

RED BENCHMARK FOR PROFIT 77H 2159485

Male BFR 77H May 22, 2020

RED LSF TAKEOVER 9943W
RED H2R PROFITBUILDER
 RED BROWN MS P707
Sire: RED LIKE IT PROFIT BUILDER 7215E
 RED LSF HERDBUILDER 1058Y
RED TBJR REBELLA 409
 RED RAISLAND REBELLA 146-737
 RED BASIN EXT 5233
RED BASIN EXT 45T5
 BASIN ROSE 710P
Dam: RED MAID OF BENCHMARK 992
 RED LAZY MC PRECISION 20N
RED MAID OF BENCHMARK 767
 RED MAID OF BENCHMARK 125

CARCASS	
EPD'S:	
MARB	+0.70
REA	+0.37
FAT	+0.011
ACTUAL:	
%IMF	5.23
REA	1.08
RIB FAT	0.39
LMY	57.8%

PERFORMANCE							EPD's						
AOD	BW	205D	365D	ADG	E-G	RFI	CE	BW	WW	YW	RFI	CBI	
9	80	525	1148	3.95	5.73	2.03	+6.0	-0.6	+40	+86	+0.54	+6	+279

SEPTEMBER 2021 EPD RANKING:

Top 1% Marbling
 Top 2% Docility
 Top 20% Ribeye
 Top 1% Milk
 Top 10% Yearling Weight
 Top 2% Cdn Balanced Index
 Top 15% Birth Weight

PERFORMANCE							EPD's						
AOD	BW	205D	365D	ADG	E-G	RFI	CE	BW	WW	YW	RFI	CBI	
11	83	658	1219	4.56	5.02	1.46	+4.0	+0.7	+49	+82	+0.4439	-	

SEPTEMBER 2021 EPD RANKING:

Top 1% Marbling
 Top 10% Weaning Weight
 Top 2% Carcass Weight
 Top 15% Yearling Weight
 Top 6% Milk

Queen 28'11 is designated Elite by Canadian Angus Assoc. She has produced sons for Doug Fergeson's Open AV Red Angus, Jeff Resch and Michael De Kok. She is sired by a bull we owned with Phil Rowland.

Maternal brothers work for Phil Rowland, Antelope Butte, Armstrong Ranches and Peavine Ranches, with a full sister in production at Benchmark'. My notes say very quiet with a good foot.



LOT 52

OLS TUBS

This protein, energy, concentrated vitamin and mineral package is designed for use on growing and mature beef cattle being fed grass hay, dry grass, pasture, or for mature beef cattle on very poor quality roughage. Contains extra AMARFERM, which is proven to be an effective replacement for 3 pounds of pellets or grain. Also includes BIO-MOS to aid in the building of the immune system. BIO-MOS has been proven effective on E-coli and Salmonella, where pharmaceuticals have failed.

- FCI approved, no restricted use protein products.
- Complete well balanced vitamin and mineral program. Formulations to fit all phases of production livestock.
- Enhanced roughage utilization through Amavim. Animals will have a better fit, visibly less intake seen in the mouth (in 10 days to 2 weeks).
- Substantial roughage savings: 15-30% on hay and up to 50% on corn stalks.
- Less time between parturition and first heat, stronger heat signs and faster breed back; higher conception rates and stronger offspring at birth.
- Healthier immune system, improved disease resistance, lower costs for supportive vet care. Heavier weaning weights, if puts more pounds on the ground for you.
- Guaranteed consumption control to improve your overall bottom line.

TESTIMONIALS AVAILABLE

IN STOCK

OLS #9 CA Bovine Breeder
 Most Concentrated All-Around Tub
OLS #10 Bovine Breeder Bio
 Most Concentrated All-Around Tub
OLS #14 CA Bovine Breeder D
 Most Concentrated Tub with added D.E.
OLS #20 CA Performance Bull
 Special Tub for Backgrounding Young Bulls with added Bio-Mos, D.E., Oxygan, & Sclerol

SPECIAL ORDER AVAILABLE

Layne Cook
 OLS Dealer

Ph: 429-963-2244
 Cell: 429-387-0563
 Email: clayne@olsusa.net

Box 2293
 Canton, MS 38924
 USA

Simply the Best!

GIVE AWAY

OLS TUB

FROM OLS
 FOR
 OVERALL
 VOLUME
 BUYER

REFERENCE SIRE

RED LAUBACH DEEP END 7047



CAA
GENOMIC
ENHANCED
EPDs

CE
+11.0

BW
0.0

WW
+61

YW
+113

CW
+49

MARB
+0.28

REA
+0.59

DOC
+24

CBI
+242

PERF	AOD	BW	205D	365D
	8	85	687	1121

6 SONS SELL

- Avg. BW: 83 lbs
- Avg. 205D: 622 lbs.
- Avg. 365D: 1223 lbs

RED BIEBER ROLLIN DEEP Y118

Sire: RED BIEBER DEEP END B597

RED BIEBER LAURA 158W

RED HXC CONQUEST 4405P

Dam: RED LAUBACH JODI 9018

RED WHY 8000 WILLOW 7033

RED BIEBER ROOSEVELT W384

RED BIEBER TILLY 399W

RED LJC MISSION STATEMENT

RED BASIN LAURA 5301

RED BECKTON JULIAN GG B571

RED HXC ELLIE MAY MA638

RED BIEBER BOONE 8000

RED WILLOW BONNIEBELL 304

We lost Big Timber due to an injury so these sons will be the last. We retained eight, 2019 heifers and all have calved to their A.I. service. Fertility!! The Big Timber's were well accepted last year and we would expect the same for this year.

SEPTEMBER 2021 EPD RANKING:

Top 1% Weaning Weight
Top 1% Yearling Weight
Top 1% Residual ADG
Top 1% Carcass Weight
Top 1% Fat

Top 2% Docility
Top 6% Calving Ease
Top 8% Ribeye
Top 15% CDN Balanced Index



Terry Russell
Kathy Russel

Milk River
Home Hardware
Building Centre
109 Centre Ave.
Box 240
Milk River
Alberta

T 403-647-3636
403-647-3515

C 403-642-7820
F 403-647-3533
mrlumer@mrccable.ca

*Looking for fence posts & barb wire?
We have a great selection of peeled, Spray Lakes posts available!*

BULLS SIRED BY RED LAUBACH DEEP END

LOT 54

RED BENCHMARK BIG TIMBER 24H 2159544

Male BFR 24H April 25, 2020



RED BIEBER ROLLIN DEEP Y118
 RED BIEBER DEEP END B597
 RED BIEBER LAURA 158W
Sire: RED LAUBACH DEEP END 7047
 RED HXC CONQUEST 4405P
 RED LAUBACH JODI 9018
 RED WHY 8000 WILLOW 7033
 RED LSF MEW GAME CHANGER 1613Y
RED BENCHMARK TRANSITION 10'14
 RED BENCHMARK LANA 60'11
Dam: RED BENCHMARK CHETA 73'17
 RED BASIN EXT 45T5
 RED BENCHMARK CHETA 019'13
 RED BENCHMARK CHETA 48'11

CARCASS	
EPD'S:	
MARB	+0.22
REA	+0.36
FAT	+0.008
ACTUAL:	
%IMF	4.06
REA	1.19
RIB FAT	0.40
LMY	59.6%

PERFORMANCE							EPD's				
AOD	BW	205D	365D	ADG	F:G	RFI	CE	BW	WW	YW	CBI
3	81	543	1251	5.56	4.21	1.21	+11.0	-1.0	+52	+110	+0.3858 +251

SEPTEMBER 2021 EPD RANKING:		
Top 1% Residual ADG	Top 1% Yearling Weight	Top 1% Milk
Top 2% Carcass Weight	Top 6% Calving Ease	Top 7% Docility
Top 8% Weaning Weight	Top 10% Cndn Balanced Index	

These Big Timber Bulls are growth bulls. If you are wanting more growth no need to go to a crossbred bull, take a look here! Dark, dark red, long, deep sided, good bone and hair. Checks all the boxes! Feed to Gain - WOW!



LOT 55

RED BENCHMARK BIG TIMBER 33H 2159495

Male BFR 33H May 1, 2020



RED BIEBER ROLLIN DEEP Y118
 RED BIEBER DEEP END B597
 RED BIEBER LAURA 158W
Sire: RED LAUBACH DEEP END 7047
 RED HXC CONQUEST 4405P
 RED LAUBACH JODI 9018
 RED WHY 8000 WILLOW 7033
 RED BASIN EXT 5233
RED BASIN EXT 45T5
 BASIN ROSE 710P
Dam: RED BENCHMARK DURUBA 41'11
 RED 5L TRAVLIN EXP 1892-6295
 RED BENCHMARK DURUBA 96
 RED BENCHMARK DURUBA 5102

CARCASS	
EPD'S:	
MARB	+0.45
REA	+0.55
FAT	-0.033
ACTUAL:	
%IMF	5.26
REA	1.06
RIB FAT	0.35
LMY	60.2%

PERFORMANCE							EPD's				
AOD	BW	205D	365D	ADG	F:G	RFI	CE	BW	WW	YW	CBI
9	100	616	1309	4.76	4.63	0.86	-1.0	+3.6	+64	+113	+0.2684 +224

SEPTEMBER 2021 EPD RANKING:		
Top 1% Weaning Weight	Top 1% Yearling Weight	Top 1% Carcass Weight
Top 2% Fat	Top 3% Residual ADG	Top 9% Marbling
Top 10% Ribeye	Top 30% Cdn Balanced Index	

Dam by Basin EXT 45T5 is "premier!" Sons at RCM Cattle and Booneco Feeders with three daughters retained. This bull is big and powerful. Note the Rankings! Grow, Gain and Grade all bred in.

BULLS SIRED BY RED LAUBACH DEEP END

LOT 56

RED BENCHMARK BIG TIMBER 43H

Male BFR 43H May 2, 2020

2159530

	RED BIEBER ROLLIN DEEP Y118	
	RED BIEBER DEEP END B597	
	RED BIEBER LAURA 158W	
Sire:	RED LAUBACH DEEP END 7047	
	RED HXC CONQUEST 4405P	
	RED LAUBACH JODI 9018	
	RED WHY 8000 WILLOW 7033	
	RED BROWN ALLIANCE X7795	
	RED DUNN BETTER A500	
	RED LSF SWEETNESS J1358 P4085	
Dam:	RED BENCHMARK SUNFLOWER 114'16	
	RED BASIN EXT 45T5	
	RED BENCHMARK SUNFLOWER 20'14	
	RED BENCHMARK SUNFLOWER 8118	

CARCASS	
EPD's:	
MARB	+0.35
REA	+0.66
FAT	-0.041
ACTUAL:	
%IMF	4.63
REA	1.11
RIB FAT	0.29
LMY	61.8%

PERFORMANCE							EPD's						
AOD	BW	205D	365D	ADG	F-G	RFI	CE	BW	WW	YW	RFI	CBI	
4	77	685	1222	4.37	4.35	-1.83	+12.0	-1.2	+53	+91	-0.0785	-	

SEPTEMBER 2021 EPD RANKING:

Top 1% Fat	Top 3% Carcass Weight	Top 3% Ribeye
Top 4% Calving Ease	Top 6% Yearling Weight	Top 7% Weaning Weight
Top 10% Birth Weight	Top 10% Residual ADG	Top 20% Marbling
		Top 20% Milk

Extra length in this guy. Great feed conversion at 4.35:1. Coming in #11 out of 87 bulls on Grow Safe Test.

LOT 57

RED BENCHMARK BIG TIMBER 61H

Male BFR 61H May 11, 2020

2159536

	RED BIEBER ROLLIN DEEP Y118	
	RED BIEBER DEEP END B597	
	RED BIEBER LAURA 158W	
Sire:	RED LAUBACH DEEP END 7047	
	RED HXC CONQUEST 4405P	
	RED LAUBACH JODI 9018	
	RED WHY 8000 WILLOW 7033	
	RED BROWN ALLIANCE X7795	
	RED DUNN BETTER A500	
	RED LSF SWEETNESS J1358 P4085	
Dan:	RED BENCHMARK CHETA 31'17	
	RED 5L TRAVLIN EXP 1892-6295	
	RED BENCHMARK CHETA 048	
	RED CHETA OF BENCHMARK 629	

CARCASS	
EPD's:	
MARB	+0.41
REA	+0.49
FAT	-0.031
ACTUAL:	
%IMF	4.59
REA	1.06
RIB FAT	0.27
LMY	61.3%

PERFORMANCE							EPD's						
AOD	BW	205D	365D	ADG	F-G	RFI	CE	BW	WW	YW	RFI	CBI	
3	75	619	1199	4.30	4.67	-0.77	+13.0	-1.2	+45	+86	+0.0351	-	

SEPTEMBER 2021 EPD RANKING:

Top 2% Calving Ease	Top 3% Fat	Top 3% Maternal Calving Ease
Top 6% Residual ADG	Top 10% Marbling	Top 10% Carcass Weight
Top 10% Birth Weight	Top 6% Yearling Weight	Top 15% Ribeye
		Top 20% Weaning Weight

Heifer bull. Extra long. If concerned about Yield Grade on your finished steers be sure to note the minus fat EPD on these Big Timber bulls. And they convert!



LOT 57



Local option for electricity and natural gas since 2010.

Switch and receive 1 FREE month of electricity consumption.

Visit www.bowvalleypower.net, referral code: BVP

Albertans Serving Alberta



Vytelle

ALWAYS PROGRESSING



©2021 Vytelle, LLC. All rights reserved. Vytelle and its logo are trademarks of Vytelle, LLC. VY210209

BULLS SIRED BY RED LAUBACH DEEP END

LOT 58

RED BENCHMARK BIG TIMBER 62H

Male BFR 62H May 11, 2020

2159517

RED BIEBER ROLLIN DEEP Y118
 RED BIEBER DEEP END B597
 RED BIEBER LAURA 158W
Sire: RED LAUBACH DEEP END 7047
 RED HXC CONQUEST 4405P
 RED LAUBACH JODI 9018
 RED WHY 8000 WILLOW 7033
 RED BROWN COMMITMENT S7206
 RED LSF RAB COMMITMENT 2792Z
 RED BROWN MS MAKIN HAY W7901
Dam: BENCHMARK BOTEET 39'15
 O C C EMBLAZON 854E
 BENCHMARK BOTEET 19'13
 RED PIE BOTEET 508

CARCASS	
EPD's:	
MARB	+0.33
REA	+0.40
FAT	-0.013
ACTUAL:	
%IMF	5.11
REA	1.16
RIB FAT	0.32
LMY	60.4%

PERFORMANCE							EPD's						
AOD	BW	205D	365D	ADG	F:G	RFI	CE	BW	WW	YW	RFI	CBI	
5	77	678	1139	3.66	5.44	0.02	+12.0	-1.8	+45	+76	+0.1755	-	

SEPTEMBER 2021 EPD RANKING:

Top 4% Calving Ease
 Top 20% Milk
 Top 8% Birth Weight
 Top 20% Weaning Weight
 Top 15% Residual ADG
 Top 25% Yearling Weight

Nice birth weight on this heifer bull. Maternal brother at Ben Swans and a daughter of Boteet 39'15 in production at Benchmark'.

LOT 59

RED BENCHMARK BIG TIMBER 85H

Male BFR 85H June 3, 2020

2159497

RED BIEBER ROLLIN DEEP Y118
 RED BIEBER DEEP END B597
 RED BIEBER LAURA 158W
Sire: RED LAUBACH DEEP END 7047
 RED HXC CONQUEST 4405P
 RED LAUBACH JODI 9018
 RED WHY 8000 WILLOW 7033
 RED CHAMPLAIN SERENADE 2513P
 RED BENCHMARK SURESHOT 8119
 RED PR BAR STAR 27R
Dam: RED BENCHMARK DURUBA 62'11
 RED BASIN CHIEF JOSEPH 2751
 RED DURUBA OF BENCHMARK 740
 RED DURUBA BENCHMARK 311

CARCASS	
EPD's:	
MARB	+0.12
REA	+0.65
FAT	-0.047
ACTUAL:	
%IMF	3.52
REA	1.16
RIB FAT	0.36
LMY	59.5%


PERFORMANCE							EPD's						
AOD	BW	205D	365D	ADG	F:G	RFI	CE	BW	WW	YW	RFI	CBI	
9	89	590	1220	4.48	5.15	1.70	+7.0	+0.4	+50	+94	+0.3524	-	

SEPTEMBER 2021 EPD RANKING:


Top 1% Carcass Weight
 Top 4% Yearling Weight
 Top 15% Milk
 Top 1% Fat
 Top 10% Weaning Weight
 Top 4% Ribeye
 Top 10% Residual ADG

A maternal brother works at McIntyre Ranching. Champlain Serenade was a Semex bull while Chief Joseph was a bull we acquired from Basin Angus.


RANCH-WORTHY POWER AT A PRICE YOU'LL LIKE.




Power. Performance. Comfort. Without the cost. That's the NEW Kubota M7-2 Rancher Edition. Built to handle the toughest jobs, the M7-2's load sensing (CCLS) hydraulics allow you to run a variety of implements and gives you wide-ranging versatility to handle all your jobs. Work comfortably from the roomy cab with a built-in radio and comfortable seats. Plus, you can add a front loader with an impressive lift capacity of 5776 lbs. The M7-2 certainly earns its "Rancher" title.



newwaykubota.com
 Lethbridge - (403) 328-3777
 Brooks - (403) 362-4087



kubota.ca | 

Your green solution for sustainable management of organics. Pick-up & processing of offal, carcasses & deadstock.



Please call Ed @ (403) 328-1429 or send an e-mail to ed@ecbna.com





INDEPENDENT CROP INPUTS

Josh Iwan CCA

Cell: 403-634-2723
 Office: 403-223-1325
 Email: josh@icitaiber.com

Box 4690
 Taber, AB
 T1G-2E1

REFERENCE SIRE

RED FEDDES FRONTLINE Y33-8265



CAA
GENOMIC
ENHANCED
EPDs

CE
+7.0

BW
+0.5

WW
+44

YW
+85

CW
+29

MARB
+0.05

REA
+0.67

DOC
+13

CBI
+279

RED 5L OUT IN FRONT 1701-457B

Sire: RED LASO FRONT ROW X37D

RED LASO LEANNA BC114R

RED MESSMER PACKER S008

Dam: RED FEDDES BLOCKANA Y33

RED FEDDES BLOCKANA 384

RED C-T THE QUEST 1103

RED 5L FIREFLY 3109 1701

RED BASIN HOBO 79E

RED LASO LEANNA BC 114

RED MESSMER JOSHUA 019P

RED MESSMER MILLIE 124P

RED GLACIER CHATEAU 744

RED FEDDES BLOCKANA 899

PERF	AOD	BW	205D	365D
	7	79	617	1100

Frontline comes from Feddes Red Angus on the recommendation of Chuck Feddes. He comes from the famed Blockana cow family. Chuck described him as long, deep and thick with a great hind quarter and the Laso Front Row sire leaves the best feet on the ranch. Frontline scanned a 110 ratio for IMF and 114 for Ribeye. His calves are dark, dark red and have the depth of body and thickness that he has.

4 SONS SELL

- Avg. BW: 94 lbs
- Avg. 205D: 618 lbs
- Avg. 365D: 1,172 lbs

SEPTEMBER 2021 EPD RANKING:

Top 1% Fat	Top 10% Yearling Weight
Top 2% CDN Balanced Index	Top 20% Carcass Weight
Top 3% REA	Top 20% Calving Ease
Top 3% Residual ADG	Top 25% Weaning Weight
Top 4% Milk	
Top 5% Heifer Pregnancy	

BULLS SIRED BY RED FEDDES FRONTLINE

LOT 60

RED BENCHMARK FRONTLINE 36H

Male BFR 36H May 1, 2020

2159539



RED 5L OUT IN FRONT 1701-457B
 RED LASO FRONT ROW X37D
 RED LASO LEANNA BC114R
 Sire: RED FEDDES FRONTLINE Y33-8265
 RED MESSMER PACKER S008
 RED FEDDES BLOCKANA Y33
 RED FEDDES BLOCKANA 384
 RED BROWN COMMITMENT S7206
 RED LSF RAB COMMITMENT 2792Z
 RED BROWN MS MAKIN HAY W790
 Dam: RED BENCHMARK SAMARIA 49*17
 RED LSF MEW GAME CHANGER 1613Y
 RED BENCHMARK SAMARIA 47*14
 RED SAMARIA OF BENCHMARK 843

CARCASS	
EPD's:	
MARB	+0.39
REA	+0.64
FAT	-0.051
ACTUAL:	
%IMF	5.08
REA	1.18
RIB FAT	0.29
LMY	61.6%

PERFORMANCE							EPD's					
AOD	BW	205D	365D	ADG	F:G	RFI	CE	BW	WW	YW	RFI	CBI
3	89	544	1186	4.78	4.47	-0.40	+2.0	+2.6	+63	+109	+0.1556	+294

SEPTEMBER 2021 EPD RANKING:

Top 1% Cdn Balanced Index	Top 1% Weaning Weight	Top 1% Yearling Weight
Top 1% Residual ADG	Top 1% Docility	Top 1% Fat
Top 3% Carcass Weight	Top 4% Ribeye	Top 15% Marbling

These Frontline bulls are bred to add muscle and take off rib fat. Much easier to sell well-marbled meat than it is fat. This guy converted well and scanned real well with a 61.6% LMY.

LOT 61

RED BENCHMARK FRONTLINE 46H

Male BFR 46H May 4, 2020

2159524



RED 5L OUT IN FRONT 1701-457B
 RED LASO FRONT ROW X37D
 RED LASO LEANNA BC114R
 Sire: RED FEDDES FRONTLINE Y33-8265
 RED MESSMER PACKER S008
 RED FEDDES BLOCKANA Y33
 RED FEDDES BLOCKANA 384
 RED BROWN COMMITMENT S7206
 RED LSF RAB COMMITMENT 2792Z
 RED BROWN MS MAKIN HAY W790
 Dam: RED BENCHMARK ANNIE 105*15
 RED BASIN EXT 45T5
 RED BENCHMARK ANNIE 088
 RED ANNIE OF BENCHMARK 345

CARCASS	
EPD's:	
MARB	+0.53
REA	+0.41
FAT	-0.025
ACTUAL:	
%IMF	6.27
REA	1.24
RIB FAT	0.25
LMY	63.6%

PERFORMANCE							EPD's					
AOD	BW	205D	365D	ADG	F:G	RFI	CE	BW	WW	YW	RFI	CBI
5	99	659	1144	-	-	-	-7.0	+4.2	+50	+81	-	+260

SEPTEMBER 2021 EPD RANKING:

Top 5% Marbling	Top 6% Fat	Top 7% Cdn Balanced Index
Top 10% Weaning Weight	Top 15% Yearling Weight	Top 20% Carcass Weight

This guy was a little under the weather while on test so we have no ADG nor F:G data.



50 YEAR

Canadian Angus Assoc. Heritage Award

We Can...

MILT'S EARTHMOVING LTD.

- Dig Dugouts
- Clean Dugouts
- 60' Long Reach Excavator
- Scraper Work
- Drainage Ditches
- Basements
- PVC Line Installation
- Road Maintenance

Burdett, Alberta
 Cell: (403) 382-7895 • Phone: (403) 833-3766 • Fax: (403) 833-3706

ICI
INDEPENDENT CROP INPUTS

Bruce Fletcher

Office: 403-223-1325
 Cell: 403-393-6497
 Email: bruce@icitaber.com

Box 4690
 Taber, AB
 T1G-2E1

LOT 62**RED BENCHMARK FRONTLINE 51H**

Male BFR 51H May 8, 2020

2159528



RED 5L OUT IN FRONT 1701-457B
 RED LASO FRONT ROW X37D
 RED LASO LEANNA BC114R
Sire: RED FEDES FRONTLINE Y33-8265
 RED MESSMER PACKER S008
 RED FEDES BLOCKANA Y33
 RED FEDES BLOCKANA 384
 RED BROWN ALLIANCE X7795
 RED DUNN BETTER A500
 RED LSF SWEETNESS J1358 P4085
Dam: RED BENCHMARK LAKIMA 82'16
 RED BADLANDS NET WORTH 23U
 RED BENCHMARK LAKIMA 14'11
 RED BENCHMARK LAKIMA 95

CARCASS	
EPD's:	
MARB	+0.26
REA	+0.84
FAT	-0.056
ACTUAL:	
%IMF	3.64
REA	1.31
RIB FAT	0.21
LMY	65.9%

PERFORMANCE							EPD's					
AOD	BW	205D	365D	ADG	F-G	RFI	CE	BW	WW	YW	RFI	CBI
4	100	685	1242	4.06	4.67	-1.41	-1.0	+4.2	+68	+118	-0.0884	+324

SEPTEMBER 2021 EPD RANKING:

Top 1% Weaning Weight	Top 1% Yearling Weight	Top 1% Carcass Weight
Top 1% Ribeye	Top 1% Fat	Top 1% Milk
Top 1% Cdn Balanced Index	Top 2% Residual ADG	Top 20% Marbling

Big, strong bull here who will leave calves that will push the scales down. Check the LMY on this guy! # 1 Ranked 2020 Red Angus Bull on Cdn Angus Assoc CBI Index.

**LOT 63****RED BENCHMARK FRONTLINE 82H**

Male BFR 82H May 28, 2020

2159515



RED 5L OUT IN FRONT 1701-457B
 RED LASO FRONT ROW X37D
 RED LASO LEANNA BC114R
Sire: RED FEDES FRONTLINE Y33-8265
 RED MESSMER PACKER S008
 RED FEDES BLOCKANA Y33
 RED FEDES BLOCKANA 384
 RED BROWN COMMITMENT S7206
 RED LSF RAB COMMITMENT 2792Z
 RED BROWN MS MAKIN HAY W7901
Dam: RED BENCHMARK QUEEN 92'14
 RED BASIN EXT 45T5
 RED BENCHMARK QUEEN 61'12
 RED QUEEN OF BENCHMARK 984

CARCASS	
EPD's:	
MARB	+0.17
REA	+0.76
FAT	-0.036
ACTUAL:	
%IMF	3.16
REA	1.47
RIB FAT	0.22
LMY	64.7%

PERFORMANCE							EPD's					
AOD	BW	205D	365D	ADG	F-G	RFI	CE	BW	WW	YW	RFI	CBI
6	87	583	1115	4.10	5.33	0.90	+5.0	+0.4	+47	+80	+0.2663	-

SEPTEMBER 2021 EPD RANKING:

Top 1% Ribeye	Top 2% Fat	Top 15% Weaning Weight
Top 15% Yearling Weight	Top 20% Carcass Weight	Top 20% Milk
Top 20% Residual ADG		

Last of the Frontline's with another great LMY. Moderate stature, good feet, dark cherry red. Note that Queen 984 is designated Premier as is Queen 61'12, no small feat.

LOT 64**RED BENCHMARK IMPACT 38H**

Male BFR 38H May 2, 2020

2159559

RED BIEBER ROLLIN DEEP Y118
 RED BIEBER DEEP END B597
 RED BIEBER LAURA 158W
Sire: RED CIRCLE G FLAME 17F
 RED LSF RAB COMMITMENT 2792Z
 RED BENCHMARK BURGESS 98'15
 RED BENCHMARK BURGESS 89'13
 RED BROWN ALLIANCE X7795
 RED DUNN BETTER A500
 RED LSF SWEETNESS J1358 P4085
Dam: RED BENCHMARK RUTH ANNE 62'18
 RED LSF RAB COMMITMENT 2792Z
 RED BENCHMARK RUTH ANNE 8'14
 RED BENCHMARK RUTHANNE 86'12

CARCASS	
EPD's:	
MARB	+0.93
REA	-0.43
FAT	-0.015
ACTUAL:	
%IMF	6.37
REA	1.14
RIB FAT	0.39
LMY	58.4%

PERFORMANCE							EPD's					
AOD	BW	205D	365D	ADG	F-G	RFI	CE	BW	WW	YW	RFI	CBI
2	77	541	1201	4.76	4.41	-0.82	+11.0	+0.1	+50	+96	-0.0249	-

SEPTEMBER 2021 EPD RANKING:

Top 1% Marbling	Top 1% Docility	Top 3% Yearling Weight
Top 6% Milk	Top 6% Calving Ease	Top 6% Residual ADG
Top 10% Weaning Weight		

We conclude with a real nice heifer bull sired by a bull we purchased from Garth Cutler. Note Flame is by Beiber Deep End B597 as is our Laubach Deep End 7047 bull. Flame himself had a 63 lb BW with 747 lb, 205 D weight with a 132 ratio for IMF on ultrasound.



Feed Efficiency

I think we all know firsthand about feed efficiency. Some of us eat very little and still gain weight. Some of us wish we were inefficient such that we could eat whatever and how much we want and not gain weight. As with mankind, this principal applies clearly with our cattle. Some are efficient and some are not.

We often hear claims by producers that they have and produce efficient cattle. For the most part this is a statement made with no facts and proof behind it as they have not actually tested their cattle. How would one know? That is the dilemma we found ourselves in. We knew the weights on our cows, we knew the weights on our weaned calves and on our yearling cattle, but we had no idea on how to improve efficiency without individual testing of the animals. We run approximately 400 cows, we would like to run 440-450 cows on the same land base. We feed thousands of dollars of feed to our calves post-weaning, we want to decrease that cost by at least 10% and we want to have an improved environmental impact by decreasing methane and manure output.

By selecting for more feed efficient animals, we feel we can accomplish these goals. The goal as set by the National Beef Strategy is to be 15% more efficient within 5 years. We have a task set out for all of us. Improving the feed efficiency of your herd can result in big savings. 70 to 75 % of our total feed cost is used for maintenance of our cow herd. A 5% improvement in feed efficiency is considered to have an economic effect 4 times greater than a 5% improvement in average daily gain.

Residual Feed Intake (RFI) or net feed efficiency is defined as

the difference between an animal's actual feed intake and its expected feed requirement for maintenance and growth. RFI is the variation in feed intake that remains after the requirements for maintenance and growth have been met. Efficient animals eat less than expected and have a negative or low RFI, while inefficient animals eat more than expected and have a positive or high RFI. Research has indicated that this trait is quite heritable at about 40%. Dr. John Basarab and collaborating scientists from such countries as Australia, Ireland, Brazil and the US have concluded that selection for efficient RFI cattle will have no effect on growth, carcass yield and quality grade; will reduce feed intake at equal weight and ADG, will improve feed to gain ratio by 10-15%; will reduce net energy of maintenance and reduce the carbon footprint of cattle; and will reduce feed costs while having no effect on fertility of the cattle. A further explanation is given by Dr. John Genho of Neogen as follows:

FEED EFFICIENCY EPDS

Feed Efficiency EPDs attempt to capture an animal's genetic ability to put on more weight with less feed. While there are many ways to calculate feed efficiency (such as feed conversion ratio and residual average daily gain), an especially useful way is residual feed intake or RFI. RFI is feed intake adjusted for an animal's weight and gain. An animal that eats more also tends to be larger and gain more weight. By adjusting these factors out of an animal's intake measurement, we are able to better understand which animals process feed more efficiently.

We can then select for our typical growth traits (yearling weight, weaning weight, or post wean gain) and at the same time select for intake (in the form of RFI) and know that there is no double counting of an animal's size.

The RFI EPDs are expressed in actual lbs. of feed an animal will eat per day and is used in comparing one bull to another bull for the predictability of the RFI trait. Let's say we would expect bull X's calves to eat 0.65 lbs. more feed per day than the average calf his size, bull Y's to eat 0.35 lbs. less feed per day than the average calf his size, and bull Z's to eat 0.42 lbs. less feed than the average calf his size. Based on these numbers we would obviously choose bull Z as a sire.

Single trait selection is always a bad idea. RFI is no exception to this rule. Selection for RFI should always be done in conjunction with selection for growth. This selection for growth can be done by looking at weaning weight, yearling weight, or post wean gain EPDs. This will allow breeders to select animals that gain the most while consuming the least amount of feed.

This is cutting edge. You will not find this information in many Angus sale books in all of Canada. If you are serious about breeding economical, efficient, profitable cattle, I think you have to take a look. We have to get more efficient while yet producing a product the consumer is wanting and willing to pay for. We have provided from Grow Safe the RFI results for your consideration. The actual phenotypic results are the individuals' actual results on test. The RFI EPDs are a prediction of how the bulls' progeny will perform with respect to RFI and have been calculated by Dr. Genho.



INTRODUCING

THE NEW CANADIAN ANGUS ASSOCIATION'S CANADIAN BALANCED INDEX

EPDs for new traits that are economically relevant are being developed and introduced to Canadian Angus members continuously.

Applying EPDs for all these traits into selection and breeding decisions can be challenging. Therefore, the Canadian Angus Association has worked to develop an Economic Selection Index that includes the EPDs for all traits. Traits are weighted in the index based on their economic impact on the Canadian commercial operation.

Basically, indexes help producers use EPDs to balance traits. Balancing traits can be complex. Not all traits make an equal contribution to profitability, and some traits counteract each other (e.g. post-weaning growth and cow size/feed requirements). Other traits are important to a certain threshold, then there is less benefit in going any further (e.g. calving ease) or even a direct cost (e.g. milk production).

A well-constructed index can help streamline the process of selecting cattle for breeding. It is not intended to replace individual trait EPDs (which will still be available) or to tell breeders how to breed. An index can help breeders focus on cattle that will tend to be more profitable under Canadian production systems and markets.

For the commercial producer—who likely purchases bulls and thinks about EPDs on only one day of the year—it is a useful overall guide that simplifies the complexity of multiple EPDs.

The Canadian Balanced Index will officially be launched later this year.

The index is expressed in terms of Canadian dollars and reflects the expected difference in profits between bulls' progeny.

For example:

Bull A CBI = \$250
Bull B CBI = \$150

On average, progeny from Bull A will be \$100 more profitable in a Canadian commercial operation than the progeny from Bull B.

If you have any questions about the new Canadian Angus Association Balanced Index please do not hesitate to contact CAA's Director of Science and Technology, Kajal Devani at kdevani@cdnangus.ca or 403-537-5604.

WHAT IS INCLUDED IN THE CANADIAN BALANCED INDEX:

GROWTH TRAITS

Birth Weight EPD
Weaning Weight EPD
Milk EPD
Yearling Weight EPD
Residual Daily Gain EPD

MATERNAL TRAITS

Calving Ease Direct EPD
Calving Ease Maternal EPD
Heifer Pregnancy EPD
Docility EPD
Mature Weight EPD
Foot Angle EPD
Foot Claw EPD

CARCASS TRAITS

Marbling EPD
Rib Eye Area EPD
Back Fat EPD

Expected Progeny Differences (EPDs)

Expected Progeny Differences (EPDs) are the most powerful genetic tool we have for selecting the best animals for your breeding program. EPDs are values that predict how the future progeny of an animal will perform relative to the progeny of other animals in the same breed.

EPDs:

- allow breeders to estimate a young animal's breeding value - that animal's value as a parent
- allow a fair comparison of breeding value by removing environmental bias such as climate, feed and special management
- the best tool available to compare animals between herds, countries and year of birth
- help breeders make informed decisions regarding breeding stock selection by evaluating numerous traits such as

#1 Growth Related Traits (WW, YW, CW, Milk, RADG, DMI, F:G)

WEANING WEIGHT (WW) Expressed in pounds, is a predictor of a sire's ability to transmit weaning growth to his progeny compared to other sires.

YEARLING WEIGHT (YW) Expressed in pounds, is a predictor of a sire's ability to transmit yearling growth to his progeny compared to other sires.

MILK Expressed in pounds, is a predictor of the milking ability in a sire's daughters, representing the difference in weaning weights of calves due to the amount of milk produced by their mothers.

CARCASS WEIGHT (CW) is expressed in pounds predicting the differences in the average carcass weight of sires progeny.

RESIDUAL AVERAGE DAILY GAIN (RADG) Expressed in pounds per day, is a predictor of a sire's genetic ability for post weaning gain in future progeny compared to that of other sires, given a constant amount of feed consumed.

DAY MATTER INTAKE (DMI) Expressed in pounds per day, is a predictor of difference transmitting ability for feed intake during post weaning phase, compared to that of other sires.

FEED TO GAIN (F:G) Is the amount of feed (dry matter) consumed to gain one pound of gain, expressed as a ratio. The average feed conversion ratio is 6.1 to 1. Feed costs are 65- 70% of all costs.

#2 Reproductive Related Traits (BW, CE, MCE, SC, HPG, Stay)

BIRTH WEIGHT (BW) expressed in pounds, is a predictor of a sire's ability to transmit birth weight to his progeny compared to other sires.

CALVING EASE (CE) the average difference in ease with which a sire's calves will be born when he is bred to first calf heifers, a higher number indicates a higher probability that his calves will be born unassisted.

MATERNAL CALVING EASE (MCE) Predicting the average calving ease with which a sire's first calf heifers will calve when compared to daughters of other sires.

SCROTAL CIRCUMFERENCE (SC) Expressed in cm, is a predictor of the difference in transmitting ability for scrotal size compared to other sires.

HEIFER PREGNANCY (HPG) is a predictor of the percent probability in a bull's daughter's ability to conceive and calve as two year olds

STAYABILITY (Stay) is the percent probability of daughters staying in production to at least six year of age.

#3 Carcass Related Traits (Fat , REA, % IMF)

To evaluate seed stock, use EPDs, pedigree and visual assessment. With EPDs, the concept of "intermediate optimums" works best.

Selection for one trait or for extremes generally results in unexpected consequences due to genetic correlations - for example, intense selection for high yearling weight will generally increase birth weight. Successful cattle breeding requires a thoughtful and balanced approach to optimize fertility, growth and carcass merit while improved profitability and efficiency. With all the data that comes with each bull, I'm sure at times it must be overwhelming. In order to use body composition EPDs of ultrasound data to their full potential, a breeder must have an understanding of the ultrasound terminology. Several of the ultrasound measurements are comparable to the familiar carcass measurements. The data is simply collected on yearling bulls and heifers instead of market ready steers. Take a step back from looking at the numbers and become comfortable with the terminology.

RIB FAT An external fat measurement taken between the 12th and 13th rib - the location a carcass would be split into quarters in the cooler reported in inches. Rib fat is the main factor in the USDA Yield Grade Equation.

RIBEYE AREA (REA) An area measurement of the longissimus dorsi, or ribeye muscle - reported in square inches. This image tends to be the most difficult to collect and requires the most highly skilled interpreting technician. Both the rib fat and ribeye area measurements are taken from the same image. The REA score is reported as sq. in. per 100lbs. of body weight.

RUMP FAT An external fat measurement taken from an image collected between the hooks and the pins of the animal, reported in inches. The rump fat measurement coupled with the rib fat measurement, is used to determine more accurately the overall external body fat, enhancing the accuracy of predicting percent retail product (PRP). In most cases, an animal will exhibit more fat over the rump than the rib due to physiological process of “laying on fat.” Therefore, more variation is often displayed in the rump fat measurements of a contemporary group than the rib fat. This image is highly repeatable and is the least difficult to collect or interpret.

INTRAMUSCULAR FAT (%IMF) This measurement determines the amount of fat within the muscle (similar to marbling) and is reported in “%.” This measurement should be collected when cattle are maintaining a high level of nutrition. The field technician collects four images and the values generated by the interpreting software are averaged for an overall %IMF.

The Angus Associations, both AAA and CAA have adopted the CUP (Centralized Ultrasound Processing) Program for Ultrasounding Carcass Data and are using this information for formulating Carcass EPDs. This is the 22nd year we have provided ultrasound measurements as taken by certified technicians. We feel it is very important that you, our valued customer, know what is under the hide as that really does determine value. It has been determined through many studies that carcass traits are highly heritable and that feeding has only marginal effect on the resulting carcass - genetics determine carcass quality!

SPRING 2021 ANGUS EPD AVERAGES FOR ALL CALVES BORN IN 2020

BLACK ANGUS

CE	BW	WW	YW	Milk	CW	REA	Marb	Fat	CBI
+3.4	+2.1	+49	+86	+22	+36	+0.46	+0.39	+0.015	+264

RED ANGUS

CE	BW	WW	YW	Milk	CW	REA	Marb	Fat	CBI
+2.5	+1.2	+38	+64	+23	+22	+0.36	+0.24	+0.001	+212

FEEDER CALF INDEX

Feeder Calf Index is an index calculated by the Canadian Angus Association that gives a weighted combination EPD of economically relevant traits for feeder calves. The composition weighting is as indicated below.

You can obtain these values from the Association on the bulls you are using to see how they stack up. Below is a listing of some top end producers Feeder Calf Indexes.

Ranch #1 using Benchmark® Bulls **259**

Ranch #2 using Benchmark® Bulls **231**

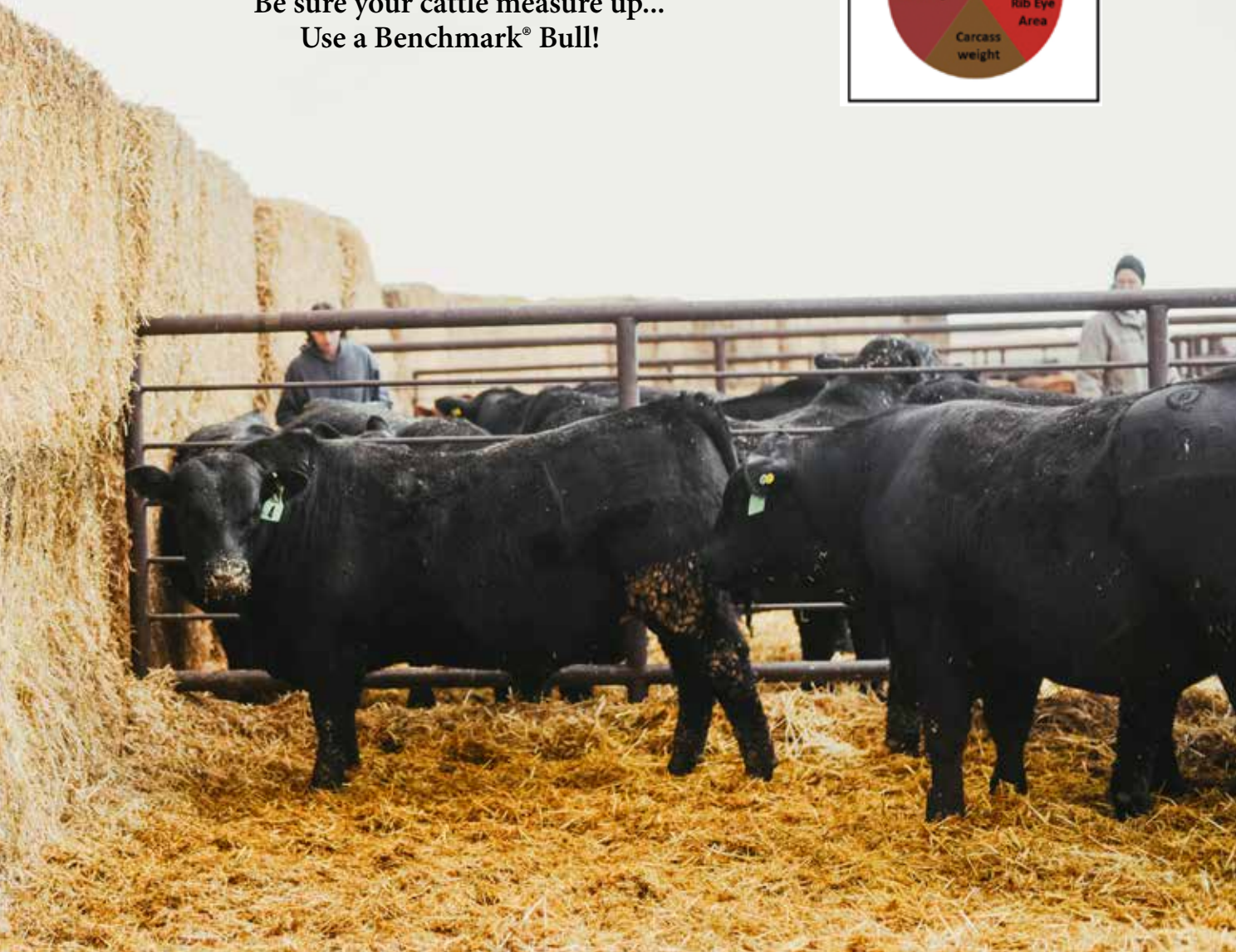
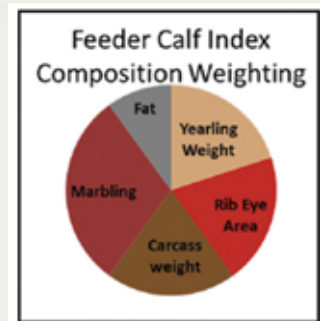
Ranch #3 using Benchmark® Bulls **224**

Ranch #4 using Benchmark® Bulls **208**

Ranch #5 using Benchmark® Bulls **200**

Breed Average 111

**Be sure your cattle measure up...
Use a Benchmark® Bull!**



NOTES

SALES TERMS & CONDITIONS

TERMS:

The terms of the sale are cash or cheque payable at par to Benchmark Farms Ltd., Lethbridge, AB unless prior arrangements are made with the seller. The right of property shall not pass until full settlement is made. All arrangements and settlements must be made with Benchmark Farms Ltd. before any cattle will be release.

PURCHASER'S RISK:

Each animal becomes the risk of the purchaser as soon as sold.

CERTIFICATE OF REGISTRY:

A certificate of registry duly transferred will be furnished to the buyer for each animal after settlement is made.

BIDS AND BIDDING:

Sale bidding opens: November 28th at 12pm MST.
Sale bidding soft closes: November 30th at 7pm MST.
During the Racehorse Style soft close extended bidding always follow the clock of remaining time left to bid.

SHIPPING:

Assistance will be given in making shipment after the sale but no risk is assumed by the seller. Expenses incurred are the responsibility of the purchaser. Purchasers are requested to furnish shipping instructions when making settlement. Any additional expenses are the responsibility of the buyer, including duty, brokerage fees, etc.

ACCIDENTS:

Although every precaution will be taken too ensure the safety of visitors to the ranch, the owners do not assume any responsibility or liability, legal or otherwise, in the event of any unforeseen incidents resulting damage or loss of property.

BREEDER'S GUARANTEE:

Everything possible has been done to assure that every bull in this sale will be a breeder. Taber Cattle Clinic semen tested and physically evaluated every bull. However, should a problem arise, please inform the seller so further arrangements may be made.

Semen Interest Retained Benchmark® Angus retains a one-third semen interest in every bull selling.



BENCHMARK[®]
Your Carcass Source *Angus*



BENCHMARK FARMS LTD.
BOX 997, LETHBRIDGE, AB T1J 4A2