



2020

Legendary
Ladies

SPECKLE PARK SALE

Including...

**The Twin Lake Livestock Dispersal & The Coulee Springs Ranch Complete Dispersal
Saturday, October 24, 2020 • 1:00 pm • Notta Ranch, Neilburg, SK**



NOTTA Ranch

We are glad to welcome everyone back to Notta Ranch for this fall sale! It's with mixed emotions as we thumb through these sale offerings. The Dispersal of Twin Lake is an especially tough scenario to swallow, but a necessary one. Rick is deeply missed here on the ranch and the Speckle Park world lost a valuable member and friend too soon.

The Coulee Springs Dispersal is a great opportunity to add some proven bloodlines to your operation. Al and Deanne worked hard to perfect their herd and anyone will be lucky to snap up any of their genetics. Al, you might be getting out of the cattle business but we hope you still join us at the stall during show season!!

These two dispersals along with the offerings from our long time sale partners, Spots 'N Sprouts and Ravenworth, is making the Legendary Ladies Sale the place to get prime Speckle Park genetics!

There are a lot of options this fall. We encourage you to look deep into the genetic lines and extra homework always pays off!!! Look forward to a great sale, call anytime with questions or to arrange a viewing!

— *Jason and Sara*



Hosted By...
Notta Ranch

Jason and Sara Goodfellow

Notta Ranch

Box 307, Neilburg, SK S0M 2C0

P: 780-872-8788 • E: nottaspeckleparks@hotmail.com • W: www.nottaranch.com

SALE PARTNERS...



**Spots 'N Sprouts
Speckle Parks**

John and Dale Herbert

With 40 years of breeding Speckle Park we have had the opportunity to choose several replacement heifers from our herd. We feel the five heifers we have chosen for this sale from our group of 29 bred are some of our best. You will notice they are from three different sires, so if there is a certain sire you like best you have a choice.

The heifers were all vet checked on August 17 and are all safe in calf. We hope whichever one you choose, it will turn out to be an asset to your herd. Once again, we wish all the sellers and buyers the best in this Legendary Ladies Sale and we thank Jason and Sara for giving us the opportunity to take part in the sale and share some of our genetics.

— *John and Dale*



Ravenworth Cattle

Garry and Donna Berting

We are excited to be part of a new female sale this fall. As we are not attending any shows, we thought we would put out an extra special offering from Ravenworth Cattle. We have a new sire, Wolf Lake Free Trade 42F, that has his first crop of calves on the ground and we are very impressed.

These are exciting times in the Speckle Park breed. Once you have looked over the catalogue give us a call with any questions, we love to talk about cattle, or come and tour our herd. We are able to offer every assistance for you to participate in the sale via online bidding, or on the phone. We would like to thank Jason and Sara for hosting this event and our sale partners John and Dale, The Twin Lake Livestock & The Coulee Springs Ranch.

— *Ravenworth Cattle Speckle Park*

Spots 'N Sprouts Speckle Parks

Box 399, Neilburg, SK S0M 2C0

P: 306-893-4096 • C: 306-893-7520

E: jdherbert@mcsnet.ca • W: www.spotsnsproutsspecklepark.com

**RAVENWORTH
CATTLE**

Box 134, Middle Lake, SK S0K 2X0

P: 306-367-2013 • C: 306-231-7567

E: garry@ravenworth.com

FROM THE DESK AT *T Bar...*



Welcome to the Legendary Ladies Female Sale hosted by the legendary Notta Ranch. I dare say this place has accumulated more championship banners and has more influence in the Speckle Park breed around the world as any. Jason and Sara have travelled the globe passionately promoting the Speckle Park breed and all of us have benefited from their efforts. For this we say thank you!

This sale is full of opportunity and excitement as the females offered are the type everyone needs more of. There is also some sadness as we say goodbye to two programs which will be missed; Twin Lake and Coulee Springs. However, this opens the door for each and every one of you to step up and take advantage of what they have built.

John and Dale are pioneers and have built one of the largest and longest running Speckle Park herds in the world. Many breeders have gotten their start with Spots 'N Sprouts females, don't miss your opportunity to select from the top of their bred heifer pen. Whether you are just starting out or you are well established you can never have too many JKH tattoos in your herd.

The Ravenworth program has also proven to be one to watch for. The Berting family are extremely hard working and dedicated to building a strong cow herd. They have had a great deal of success in the show ring over the past several years. It is not always easy to get Donna to part with females, so when she does, don't miss out.

This will be a historic weekend in the Speckle Park breed and we hope that you can be with us, but if you are unable, feel free to call any of the T Bar team and we would be more than happy to assist you.

— *Chris Poley*



Chris Poley
306-220-5006



Shane Michelson
403-363-9973



Ben Wright
519-374-3335

SALE PARTNERS...



Coulee Springs Ranch
Al & Deanne Bleackley

We have watched this breed from its inception, and have been honored to be along for the ride. We are offering all our purebreds up for your consideration.

We have met many friends through the years by being a part of the Speckle Park Breed.

The time has come for us to exit the purebred cattle industry as we transition into pre-retirement.

We would like to thank everyone who helped us out in the early years. A special thanks to Jason and Sara from Notta Ranch and to John and Dale from Spots 'N Sprouts.

— *Al & Deanne Bleackley*

Coulee Springs Ranch

Al & Deanne Bleackley
Box 117, Kenaston, SK S0G 2N0
Al: 306-561-7377 • Deanne: 306-221-2331 • E: d.a.bleackley@sasktel.net



Twin Lake Livestock
Cindy Mann

I would like to thank Notta Ranch for including Twin Lake in their fall sale. Rick and I believed in these cattle of the future.

Twin Lake is offering the top end females and herd sire for your consideration. All sell no buy backs. Can be viewed in the Lloydminster area. Call Cindy for appointment 306-441-2091 or questions.

— *Cindy Mann*

Twin Lake Livestock

Cindy Mann
Box 232, Kitscoty, AB T0B 2P0
P: 306-441-2091 • E: cindyamann@hotmail.ca

GUEST CONSIGNOR...

Hidden Valley Speckle Park

Peter & Roz Alexander
366 Dungay Creek Road, Dungay Creek, NSW 2484 Australia
P: 65-9622-6092 • W: www.hiddenvalleyspecklepark.com

2020 Legendary Ladies

SPECKLE PARK SALE

Saturday, Oct. 24, 2020 • 1:00 pm
Notta Ranch, Neilburg, SK



SALE DAY PHONES...

Auctioneer

Chris Poley 306-220-5006

Ringside

Shane Michelson 403-363-9973
 Ben Wright 519-374-3335
 Chad Wilson 306-577-1256

Sale Management

T Bar C Cattle Co. Ltd. 306-933-4200
 Box 2330, Warman, SK S0K 4S0

Marketing Agents

Eastern Canadian Contact
 Andy Carter 902-664-8873

Consignors

Notta Ranch
 Jason Goodfellow 780-872-8788
 Sara Goodfellow 780-872-8787

Spots 'N Sprouts Speckle Parks

John Herbert 306-893-7520

Ravenworth Cattle

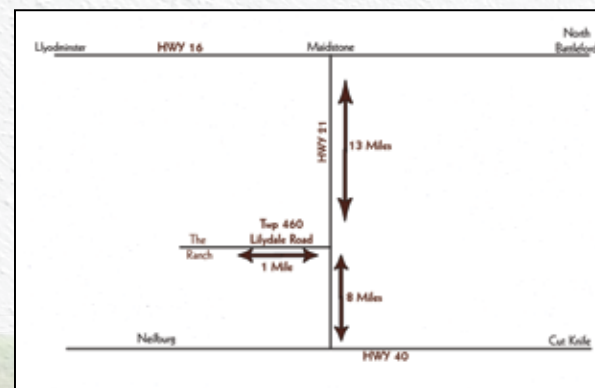
Garry Berting 306-231-7567
 Donna Berting 306-231-5175

Twin Lake Livestock

Cindy Mann 306-441-2091

Coulee Springs Ranch

Al Bleackley 306-561-7377



Directions to the Ranch:

South off HWY 16 on HWY 21 about 12 miles and 1 mile west on Lilydale Road. You will see our sign at the corner of TWP RD 460 OR 8 miles north on HWY 21 from HWY 40 intersection.

Internet Bidding Available

DLMS
 www.dlms.ca

For more information call DLMS:
 Mark Shologan 780.699.5082 or
 DLMS Purebred Team 780.991.3025

VIEW THE CATALOGUE ONLINE AT WWW.BUYAGRO.COM

SPOTS 'N SPROUTS SPECKLE PARK



FEATURE

LOT
1

SPOTS 'N SPROUTS *Gal* 3G

UNEEDA ZAPPER 13Z
SPOTS 'N SPROUTS DRAKE 111D
SPOTS 'N SPROUTS 7Y

UNEEDA WALTER 21W
MISTY FRITZ OF P.A.R. 13M
SPOTS 'N SPROUTS UTOPIA 104U
SPOTS 'N SPROUTS 10T

SPOTS 'N SPROUTS EXPERT 102X
SPOTS 'N SPROUTS 1Z
SPOTS 'N SPROUTS 4P

RIVER HILL SKIPPER 6S
SPOTS 'N SPROUTS 10S
PRAIRIE HILL ENTICER 89G
SPOTS 'N SPROUTS 7K

PUREBRED FEMALE	TATTOO	REG #	BIRTHDATE	BIRTH WEIGHT	MYOSTATIN	COAT COLOUR	POLLED
	JKH 3G	10735-PB	FEB. 9, 2019	75 LBS.	NON-CARRIER	HOMOZYGOUS BLACK	PP

This dark sided heifer has lots of length, depth and leg under her.

Pasture exposed to Moovin Zpotz Gregory 4G (10346-PB) from May 12 to August 11 and then exposed to Spots 'N Sprouts Fernando 115F (9213-PB) from June 4 to August 11, 2020. As of August 17, 2020, vet confirmed her as about 60 days pregnant.

CONSIGNED BY: SPOTS 'N SPROUTS SPECKLE PARK

SPOTS 'N SPROUTS SPECKLE PARK



LOT
2

SPOTS 'N SPROUTS *Gal* 24G

UNEEDA ZAPPER 13Z
SPOTS 'N SPROUTS CAJUN 114C
SPOTS 'N SPROUTS 8U

UNEEDA WALTER 21W
MISTY FRITZ OF P.A.R. 13M
HWY.4 SPECKLE PARK 20K
CODIAK JENNY 41J

SPOTS 'N SPROUTS EXPERT 102X
SPOTS 'N SPROUTS 12Z
SPOTS 'N SPROUTS 12X

RIVER HILL SKIPPER 6S
SPOTS 'N SPROUTS 10S
STYALS LIGHTNING LADD 14P
MISS SAGE 8R

	TATTOO	REG #	BIRTHDATE	BIRTH WEIGHT
PUREBRED FEMALE	JKH 24G	10819-PB	MAR. 16, 2019	75 LBS.
	MYOSTATIN	COAT COLOUR		POLLED
	NON-CARRIER	HOMOZYGOUS BLACK		PP

This heifer is deep, wide and thick with a quiet disposition. Pasture exposed to Moovin Zpotz Gregory 4G (10346-PB) from May 12 to August 11 and then exposed to Spots 'N Sprouts Fernando 115F (9213-PB) from June 4 to August 11, 2020. As of August 17, 2020, vet confirmed her as about 70 days pregnant.

CONSIGNED BY: SPOTS 'N SPROUTS SPECKLE PARK



LOT
3

SPOTS 'N SPROUTS *Gal* 27G

RIVER HILL 12X ZAAR 7Z
RAVENWORTH RESOLUTE 122D
SPOTS 'N SPROUTS 7T

CODIAK FIDDLER GNK 12X
RIVER HILL 12U X-ULTRA 07X
CODIAK NORSEMAN RKW 38N
STYALS MOONLIGHT LADY 4M

SPOTS 'N SPROUTS ZENITH 106Z
SPOTS 'N SPROUTS 19C
SPOTS 'N SPROUTS 3A

SPOTS 'N SPROUTS WAMPUM 102W
STYALS DESIGNERS CHOICE 9M
SPOTS 'N SPROUTS WAMPUM 102W
SPOTS 'N SPROUTS 26X

	TATTOO	REG #	BIRTHDATE	BIRTH WEIGHT
PUREBRED FEMALE	JKH 27G	10821-PB	MAR. 31, 2019	70 LBS.
	MYOSTATIN	COAT COLOUR		POLLED
	NON-CARRIER	HOMOZYGOUS BLACK		PP

This heifer carries a little more length and leg than most. Pasture exposed to Moovin Zpotz Gregory 4G (10346-PB) from May 12 to August 11 and then exposed to Spots 'N Sprouts Fernando 115F (9213-PB) from June 4 to August 11, 2020. As of August 17, 2020, vet confirmed her as about 80 days pregnant.

CONSIGNED BY: SPOTS 'N SPROUTS SPECKLE PARK

SPOTS 'N SPROUTS SPECKLE PARK

SPOTS 'N SPROUTS *Gal* 30G

LOT
4



UNEEDA ZAPPER 13Z
SPOTS 'N SPROUTS CAJUN 114C
SPOTS 'N SPROUTS 8U

UNEEDA WALTER 21W
MISTY FRITZ OF P.A.R. 13M
HWY.4 SPECKLE PARK 20K
CODIAK JENNY 41J

UNEEDA Yael 06Y
SPOTS 'N SPROUTS 32D
SPOTS 'N SPROUTS 7A

CODIAK OSCAR GNK 8S
TAMMY OF P.A.R. 06T
SPOTS 'N SPROUTS WAMPUM 102W
MISS SAGE 8R

PUREBRED FEMALE	TATTOO	REG #	BIRTHDATE	BIRTH WEIGHT
	JKH 30G	10823-PB	APR. 22, 2019	75 LBS.
	MYOSTATIN	COAT COLOUR		POLLED
	CARRIER	HOMOZYGOUS BLACK		PP

This heifer is everything you could ask for. She is long, deep and wide with lots of height.

Pasture exposed to Moovin Zpotz Gregory 4G (10346-PB) from May 12 to August 11 and then exposed to Spots 'N Sprouts Fernando 115F (9213-PB) from June 4 to August 11, 2020. As of August 17, 2020, vet confirmed her as about 60 days pregnant.

CONSIGNED BY: SPOTS 'N SPROUTS SPECKLE PARK

SPOTS 'N SPROUTS *Gal* 35G

LOT
5



UNEEDA ZAPPER 13Z
SPOTS 'N SPROUTS CAJUN 114C
SPOTS 'N SPROUTS 8U

UNEEDA WALTER 21W
MISTY FRITZ OF P.A.R. 13M
HWY.4 SPECKLE PARK 20K
CODIAK JENNY 41J

UNEEDA Yael 06Y
SPOTS 'N SPROUTS 31C
SPOTS 'N SPROUTS 41Z

CODIAK OSCAR GNK 8S
TAMMY OF P.A.R. 06T
STAR BANK 64R REMEDY 9W
SPOTS'N SPROUTS 19L

PUREBRED FEMALE	TATTOO	REG #	BIRTHDATE	BIRTH WEIGHT
	JKH 35G	10826-PB	MAR. 22, 2019	75 LBS.
	MYOSTATIN	COAT COLOUR		POLLED
	NON-CARRIER	HOMOZYGOUS BLACK		PP

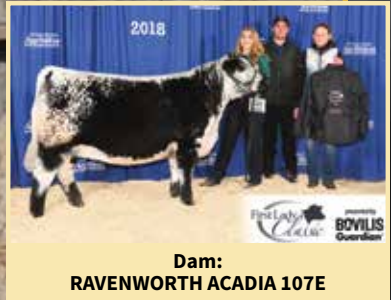
This heifer is thick with lots of rib and a quiet disposition.

Pasture exposed to Moovin Zpotz Gregory 4G (10346-PB) from May 12 to August 11 and then exposed to Spots 'N Sprouts Fernando 115F (9213-PB) from June 4 to August 11, 2020. As of August 17, 2020, vet confirmed her as about 85 days pregnant.

CONSIGNED BY: SPOTS 'N SPROUTS SPECKLE PARK

RAVENWORTH CATTLE

FEATURE



LOT
6

RAVENWORTH *Acadia* 122G

RIVER HILL 12X ZAAR 7Z
RAVENWORTH TYCHO 106E
STAR BANK SILKEN 83S

CODIAK FIDDLER GNK 12X
RIVER HILL 12U X-ULTRA 07X
SPOTS 'N SPROUTS NEFROM 101N
STAR BANK 4P

RAVENWORTH INVICTUS 103C
RAVENWORTH ACADIA 107E
RAVENWORTH ACADIA 113C

RAVENWORTH KLEOS 3Y
RAVENWORTH NORTHERN STAR 101A
RIVER HILL 12X ZAAR 7Z
RAVENWORTH ACADIA 115A

PUREBRED FEMALE	TATTOO	REG #	BIRTHDATE	BIRTH WEIGHT	MYOSTATIN	COAT COLOUR	POLLED
	GDB 122G	11152-PB	MAR. 1, 2019	78 LBS.	NON-CARRIER	HOMOZYGOUS BLACK	PP

This bred heifer has all the genetics to make a cow. Her mother is Ravenworth Acadia 107E, she won the Speckle Park First Lady Classic at Agribition in 2018. Her maternal siblings have been in our show string many times over the years and have always been some of our favorites. This heifer is very long. The Acadia cow line is always sought after. She is bred to our new sire, Wolf Lake Free Trade 42F, the same sire as the two heifer calves we have on offer. **Owned with Below Sea Level Speckle Park New Zealand.**

Hand bred to Wolf Lake Free Trade 42F on April 23, 2020. Pasture exposed to Wolf Lake Free Trade 42F from May 28 to July 23, 2020.

CONSIGNED BY: RAVENWORTH CATTLE

RAVENWORTH CATTLE

RAVENWORTH *Lightning Lady* 310H

LOT
7

JSF TRADE SECRET 11A
WOLF LAKE FREE TRADE 42F
CODIAK NORA GNK 75Z

YOGI GOES REDNECK 7Y
MONNERY RIVER 7W
CODIAK PYUTE GNK 25X
CODIAK WENDY GNK 23W

RAVENWORTH INVICTUS 103C
RAVENWORTH LIGHTNING LADY 105E
RAVENWORTH LIGHTNING LADY 120C

RAVENWORTH KLEOS 3Y
RAVENWORTH NORTHERN STAR 101A
RAVENWORTH NAVIGATOR 15Z
SIX STAR LIGHTNING LADY 22W

	TATTOO	REG #	BIRTHDATE	BIRTH WEIGHT
PUREBRED FEMALE	GDB 310H	APPLIED FOR	FEB. 1, 2020	75 LBS.
	MYOSTATIN	COAT COLOUR		POLLED

The Granddam of this heifer was the Reserve Champion Senior Female at Agribition with full sibling to the dam at side, Ravenworth Stetson 112G, was our high selling bull at 2020 bull sale. This heifer is sired by Wolf Lake Free Trade, we selected this bull because of his dam. 105E is a great producing Invictus daughter, who is the mildest mannered mother in our herd. This is another cow line working well in our herd.

CONSIGNED BY: RAVENWORTH CATTLE



Paternal Granddam:
CODIAK NORA GNK 75Z



Maternal Granddam:
RAVENWORTH LIGHTNING LADY 120C



Dam:
RAVENWORTH LIGHTNING LADY 105E



RAVENWORTH *Acadia* 309H

LOT
8

JSF TRADE SECRET 11A
WOLF LAKE FREE TRADE 42F
CODIAK NORA GNK 75Z

YOGI GOES REDNECK 7Y
MONNERY RIVER 7W
CODIAK PYUTE GNK 25X
CODIAK WENDY GNK 23W

RAVENWORTH INVICTUS 103C
RAVENWORTH ACADIA 111F
STAR BANK SILKEN 83S

RAVENWORTH KLEOS 3Y
RAVENWORTH NORTHERN STAR 101A
SPOTS 'N SPROUTS NEFROM 101N
STAR BANK 4P

	TATTOO	REG #	BIRTHDATE	BIRTH WEIGHT
PUREBRED FEMALE	GDB 309H	APPLIED FOR	FEB. 1, 2020	52 LBS.
	MYOSTATIN	COAT COLOUR		POLLED

If you are looking for a flashy heifer calf, this is it! She is smooth made, with an excellent topline. She brings the word showy to life, with her angular front end and unique color pattern. Her Granddam is an S cow who had her 13th calf this year. We have excellent half siblings on the Dams side in our herd working. The longevity in this maternal line shows that this heifer will grow and produce in your herd for years.

CONSIGNED BY: RAVENWORTH CATTLE



Dam:
RAVENWORTH ACADIA 111F



Maternal Granddam:
STAR BANK SILKEN 83S



HIDDEN VALLEY SPECKLE PARK



LOT
9

RAVENWORTH *Prairie Lily* 119F

A & W 15R
RAVENWORTH NAVIGATOR 15Z
STAR BANK URANIA 85U

STAR BANK 64R RIO 6W
RAVENWORTH PRAIRIE LILY 9Y
STAR BANK TWINKLE 51T

BELMORAL'S SPECIAL 99H
TRIPLE A GEM 15G
STAR BANK PERRIER 8P
STAR BANK SKYGLOW 79S

NOTTA ROMEO 64R
STAR BANK 99M
SPOTS 'N SPROUTS NEFROM 101N
STAR BANK 2H

	TATTOO	REG #	BIRTHDATE	BIRTH WEIGHT
PUREBRED FEMALE	GDB 119F	8314-PB	FEB. 9, 2018	91 LBS.
	MYOSTATIN	COAT COLOUR	POLLED	
	--	--	--	--

This tidy young cow has a ton of future ahead of her!
Pasture exposed to Notta 110B Hot Topic 305E from June 12 to September 15 and exposed to Notta 101Y Casino Royal 302C from July 18 to September 15, 2020.
CONSIGNED BY: HIDDEN VALLEY SPECKLE PARK

Can't make it to the sale? Internet Bidding Available.

To view this sale visit www.dlms.ca, Fill out the registration form located under registration and sign-up for your free user account and select a username and password.

BIDDERS - To be approved as a bidder, Log in to dlms.ca and click BUYER APPROVAL tab, select the sale you are interested in bidding at and click sign up.

For more information
Call DLMS Reps:
Mark Shologan - 780-699-5082 or
DLMS Purebred Team 780.991-3025



NOTTA RANCH

LOT
10

4 PACKAGES OF 10 UNITS OF SEMEN FROM YOUR CHOICE OF THE FOLLOWING BULLS

Here's a chance to choose from one of the six following breed stand out sires. All of these sires have created numerous stand out progeny! These opportunities don't come along often and units are limited! **Must be in multiples of 5, Canada use only.**



NOTTA ROMEO 64R



NOTTA 101Y DOUBLE DOWN 310D



SPOTS 'N SPROUTS BART 110B

LOT
A

NOTTA *Romeo* 64R - ONLY 30 UNITS AVAILABLE

SPOTS 'N SPROUTS JUNO 103J
STAR BANK LACERTA 68L
STAR BANK 55H

P.A.R. GREAT WESTERN 11F
SPOTS 'N SPROUTS 6A
NORALTA 9E
STAR BANK 43F

NORALTA 9E
STAR BANK 64L
JANETTE OF P.A.R. 44H

NORALTA 2B
SPOTS AND SPROUTS 12A
P.A.R. LITTLE EDDIE II 93E
PUSSY KAT II OF P.A.R. 11D

PUREBRED MALE

TATTOO	REG #	BIRTHDATE	BIRTH WEIGHT
JMG 64R	2085-FS	FEB. 13, 2005	78 LBS.

Canada use only.
CONSIGNED BY: NOTTA RANCH

LOT
B

NOTTA 101Y *Double Down* 310D - 40 UNITS AVAILABLE

STAR BANK KING GEORGE 82U
SIX STAR 82U ROYAL FLESH 101Y
STAR BANK 53R

SPOTS 'N SPROUTS NEFROM 101N
STAR BANK 11H
STAR BANK 58L
STAR BANK 9E

RIVER HILL 26T WALKER 60W
NOTTA 60W PHOTO-FINISH 1Z
NOTTA PHO-FINISH 54P

RIVER HILL TRAFFIC JAM 26T
RIVER HILL SHOW ME OFF 60S
STAR BANK LACERTA 68L
STAR BANK LEONID NIGHT 54L

PUREBRED MALE

TATTOO	REG #	BIRTHDATE	BIRTH WEIGHT
JMG 310D	6453-PB	MAR. 18, 2016	85 LBS.

Canada use only.
CONSIGNED BY: NOTTA RANCH

LOT
C

SPOTS 'N SPROUTS *Bart* 110B - 40 UNITS AVAILABLE

NOTTA ROMEO 64R
STAR BANK 64R REMEDY 9W
STAR BANK 36R

STAR BANK LACERTA 68L
STAR BANK 64L
STAR BANK 94M
STAR BANK 55H

STYALS LIGHTNING LADD 14P
SPOTS 'N SPROUTS 2W
STYALS MISS RKW 8N

HWY.4 SPECKLE PARK 20K
LIGHTNING LADY 10C
SPOTS'N SPROUTS KEELIE 101K
CODIAK RKW 08J

PUREBRED MALE

TATTOO	REG #	BIRTHDATE	BIRTH WEIGHT
JKH 110B	5066-PB	MAR. 22, 2014	85 LBS.

Canada use only.
CONSIGNED BY: NOTTA RANCH

NOTTA RANCH



SIX STAR 82U ROYAL FLESH 101Y



UNEEDA ZAPPER 13Z



STAR BANK LACERTA 68L

LOT
D

SIX STAR 82U *Royal Flesh* 101Y - 40 UNITS AVAILABLE

SPOTS 'N SPROUTS NEFROM 101N
STAR BANK KING GEORGE 82U
STAR BANK 11H

PRAIRIE HILL ENTICER 89G
SPOTS 'N SPROUTS 6A
NORALTA 9E
LIGHTNING LADY 19C

STAR BANK 58L
STAR BANK 53R
STAR BANK 9E

SPOTS 'N SPROUTS JUNO 103J
STAR BANK 68G
SPOTS 'N SPROUTS BOOMER 102B
SPOTS AND SPROUTS 5W

PUREBRED MALE

TATTOO	REG #	BIRTHDATE	BIRTH WEIGHT
SIX 101Y	3554-PB	FEB. 22, 2011	85 LBS.

Canada use only.
CONSIGNED BY: NOTTA RANCH

LOT
E

UNEEDA *Zapper* 13Z - 40 UNITS AVAILABLE

P.A.R. PAPA RAZZI 6P
UNEEDA WALTER 21W
PRAIRIE HILL MILLIE 21M

P.A.R. MR. POWERSTROKE 4M
MONALISA OF P.A.R. 6M
PRAIRIE HILL MOST WANTED 15K
PRAIRIE HILL GIDGET 92J

P.A.R. JAGR 68J
MISTY FRITZ OF P.A.R. 13M
JASHMAN OF P.A.R. 13J

P.A.R. NEW DESIGN -40° 1F
DESIGNERS CHOICE OF P.A.R. 7F
P.A.R. NEW DESIGN -40° 1F
FRITZ ATIM LASS 13F

PUREBRED MALE

TATTOO	REG #	BIRTHDATE	BIRTH WEIGHT
WES 13Z	3950-PB	APR. 12, 2012	91 LBS.

Canada use only.
CONSIGNED BY: NOTTA RANCH

LOT
F

STAR BANK *Lacerta* 68L - 40 UNITS AVAILABLE

P.A.R. GREAT WESTERN 11F
SPOTS 'N SPROUTS JUNO 103J
SPOTS 'N SPROUTS 6A

THUNDER 1C
PUSSY KAT II OF P.A.R. 11D
ASPEN ACRES T.N.T. 4Y
SPOTS AND SPROUTS 10X

NORALTA 9E
STAR BANK 55H
STAR BANK 43F

NORALTA 2B
SPOTS AND SPROUTS 12A
STAR BANK 1D
LIGHTNING LADY 19C

PUREBRED MALE

TATTOO	REG #	BIRTHDATE	BIRTH WEIGHT
GGG 68L	B5Q-FS	APR. 17, 2001	80 LBS.

Canada use only.
CONSIGNED BY: NOTTA RANCH

TWIN LAKE LIVESTOCK



FEATURE

LOT
11

NOTTA KAGER 101Y

Calypso 203C

STAR BANK KING GEORGE 82U
SIX STAR 82U ROYAL FLESH 101Y
STAR BANK 53R

SPOTS 'N SPROUTS NEFROM 101N
STAR BANK 11H
STAR BANK 58L
STAR BANK 9E

P.A.R. ROLLIN STONE 01R
POPPY OF P.A.R. 55Z
POPPY OF P.A.R. 55P

P.A.R. KING PIN 1K
ASPEN ACRES 01B
CALAMASUE 4M
MELISSA OF P.A.R. 5M

PUREBRED FEMALE	TATTOO	REG #	BIRTHDATE	BIRTH WEIGHT	MYOSTATIN	COAT COLOUR	POLLED
	JMG 203C	5667-PB	FEB. 4, 2015	95 LBS.	NON-CARRIER	HOMOZYGOUS BLACK	PP

This deep sided female has it all. She's big framed, has extra neck extension and the extra milking ability any herd would welcome! She was Reserve Champion Female at the 2016 Agribition in Regina, Saskatchewan.
Pasture exposed to Notta 110B Jus Chillin 302F from April 5 to September 15, 2020.
CONSIGNED BY: TWIN LAKE LIVESTOCK

TWIN LAKE LIVESTOCK



LOT
12

NOTTA 101Y *Cara* 206C

STAR BANK KING GEORGE 82U
SIX STAR 82U ROYAL FLESH 101Y
STAR BANK 53R

SPOTS 'N SPROUTS NEFROM 101N
STAR BANK 11H
STAR BANK 58L
STAR BANK 9E

STYALS LIGHTNING LADD 14P
SPOTS 'N SPROUTS 20U
SPOTS 'N SPROUTS 3P

HWY.4 SPECKLE PARK 20K
LIGHTNING LADY 10C
PRAIRIE HILL ENTICER 89G
SPOTS'N SPROUTS 5J

	TATTOO	REG #	BIRTHDATE	BIRTH WEIGHT
PUREBRED FEMALE	JMG 206C	5666-PB	FEB. 15, 2015	62 LBS.
	MYOSTATIN	COAT COLOUR	POLLED	
	--		---	--

Notta 101Y Cara 206C is an extremely long spined female with feet and legs that will definitely stand the test of time.
Pasture exposed to Notta 110B Jus Chillin 302F from April 5 to September 15, 2020.
CONSIGNED BY: TWIN LAKE LIVESTOCK



LOT
13

D.A.M. DOTS *Elle* 12E

NOTTA 101Y BLACK CAP 151A
NOTTA 151A CAUSE N EFFECT 309C
NOTTA 300X THETA 11A

SIX STAR 82U ROYAL FLESH 101Y
NOTTA 50S JANETTE 5W
SPOTS 'N SPROUTS STANDS ALONE
STAR BANK THETA 42T

RAVENWORTH TORQUE 116A
D.A.M. DOTS CAROLINE 24C
STAR BANK ALHENA 53A

RIVER HILL 101U XODUS 60X
STAR BANK TARAZED 46T
STAR BANK EXTOLLER 93X
STAR BANK EXTRAGALACTIC 76X

	TATTOO	REG #	BIRTHDATE	BIRTH WEIGHT
PUREBRED FEMALE	DAM 12E	7345-PB	MAR. 1, 2017	69 LBS.
	MYOSTATIN	COAT COLOUR	POLLED	
	--		---	--

A great addition to anyone's herd. She's not the biggest young cow out there, but she will produce as good as any.
Pasture exposed to Notta 110B Jus Chillin 302F from April 5 to September 15, 2020.
CONSIGNED BY: TWIN LAKE LIVESTOCK

TWIN LAKE LIVESTOCK



FEATURE

LOT
14

SPOTS 'N SPROUTS 1B

STAR BANK KING GEORGE 82U
SIX STAR 82U ROYAL FLESH 101Y
STAR BANK 53R

SPOTS 'N SPROUTS NEFROM 101N
STAR BANK 11H
STAR BANK 58L
STAR BANK 9E

STYALS LIGHTNING LADD 14P
SPOTS 'N SPROUTS 2U
TWIN RIVER 4R

HWY.4 SPECKLE PARK 20K
LIGHTNING LADY 10C
HWY.4 SPECKLE PARK 20K
ASPEN ACRES E.T. II 4E

PUREBRED FEMALE	TATTOO	REG #	BIRTHDATE	BIRTH WEIGHT	MYOSTATIN	COAT COLOUR	POLLED
	JKH 1B	4783-PB	MAR. 6, 2014	70 LBS.	NON-CARRIER	HOMOZYGOUS BLACK	PP

DEEP and BROODY! If you want one that is extra thick, this girl rises to the top of that list easily. Bertie, as we call her, was in the Flush program last winter for two flushes. Pasture exposed to Notta 110B Jus Chillin 302F from April 5 to September 15, 2020.
CONSIGNED BY: TWIN LAKE LIVESTOCK

TWIN LAKE LIVESTOCK



LOT
15

RIVER HILL 54Z *Chyna-Angel* 45C

RIVER HILL 26T WALKER 60W
RIVER HILL 60W LINE DRIVE 54Z
NOTTA PHO-FINISH 54P

RIVER HILL 68L STRIKER 50U
RIVER HILL YOUR MY ANGEL 45Y
RIVER HILL BLACK ANGEL 05M

RIVER HILL TRAFFIC JAM 26T
RIVER HILL SHOW ME OFF 60S
STAR BANK LACERTA 68L
STAR BANK LEONID NIGHT 54L

STAR BANK LACERTA 68L
PRAIRIE HILL NABOB 50N
P.A.R. HEMORRHOID 25H
CODIAK PRAIRIE FIRE RKW 05J

	TATTOO	REG #	BIRTHDATE	BIRTH WEIGHT
PUREBRED FEMALE	BED 45C	5569-PB	APR. 23, 2015	86 LBS.
	MYOSTATIN	COAT COLOUR	POLLED	
	--		---	--

A lovely River Hill breed cow that should easily find her way into another great program.
Pasture exposed to Notta 110B Jus Chillin 302F from April 5 to September 15, 2020.
CONSIGNED BY: TWIN LAKE LIVESTOCK



LOT
16

RIVER HILL 54Z *Deja Vu* 035D

RIVER HILL 26T WALKER 60W
RIVER HILL 60W LINE DRIVE 54Z
NOTTA PHO-FINISH 54P

C.A.M.Y. TORQUE 03T
CODIAK GNK 35X
CODIAK BONITA RKW 65M

RIVER HILL TRAFFIC JAM 26T
RIVER HILL SHOW ME OFF 60S
STAR BANK LACERTA 68L
STAR BANK LEONID NIGHT 54L

FLAT LAKE BIG BEN 69M
CODIAK MARCY RKW 11M
UPTO SPECS HOMER 24K
HWY. 4 SPECKLE PARK 25J

	TATTOO	REG #	BIRTHDATE	BIRTH WEIGHT
PUREBRED FEMALE	BED 035D	6106-PB	FEB. 15, 2016	88 LBS.
	MYOSTATIN	COAT COLOUR	POLLED	
	--		---	--

Deja Vu is a daughter of River Hill 60W Line Drive and you can see that power coming through.
Pasture exposed to Notta 110B Jus Chillin 302F from April 5 to September 15, 2020.
CONSIGNED BY: TWIN LAKE LIVESTOCK

TWIN LAKE LIVESTOCK

DOUBLE S *Claire* 01C

LOT
17



P.A.R. LITTLE TNT 88W
P.A.R. ASCAPE 89A
P.A.R. MONALISA 89X

ASPEN ACRES T.N.T. 4Y
MELISSA OF P.A.R. 5M
P.A.R. TOUCH DOWN 600T
MONA LISA IV OF P.A.R. 88U

UNEEDA WONDERBAR 05W
DOUBLE S RAINA DOLL 01Z
P.A.R. RAINA DOLL 154W

P.A.R. TOUCH DOWN 600T
LANDRY OF P.A.R. 5L
P.A.R. ROLLIN STONE 01R
RAINA OF P.A.R. 54R

	TATTOO	REG #	BIRTHDATE	BIRTH WEIGHT
PUREBRED FEMALE	SWS 01C	5692-PB	FEB. 25, 2015	73 LBS.
	MYOSTATIN		COAT COLOUR	POLLED
	--		---	--

This cow has a big top and a big hip. Double S Claire is extra thick with a different pedigree that will add to any herd.
Pasture exposed to Notta 110B Jus Chillin 302F from April 5 to September 15, 2020.
CONSIGNED BY: TWIN LAKE LIVESTOCK

SPOTS 'N SPROUTS 10C

LOT
18



UNEEDA WALTER 21W
UNEEDA ZAPPER 13Z
MISTY FRITZ OF P.A.R. 13M

P.A.R. PAPA RAZZI 6P
PRAIRIE HILL MILLIE 21M
P.A.R. JAGR 68J
JASHMAN OF P.A.R. 13J

ASPEN ACRES NOBLEMAN 3N
SPOTS 'N SPROUTS 10T
STYALS FANCY FEET 10M

KING KARAT OF ASPEN ACRES 1K
ASPEN ACRES GRAY GHOST 3G
CODIAK PRAIRIE FIRE 10J
ASPEN ACRES FANCY FEET 10F

	TATTOO	REG #	BIRTHDATE	BIRTH WEIGHT
PUREBRED FEMALE	JKH 10C	5700-PB	MAR. 29, 2015	80 LBS.
	MYOSTATIN		COAT COLOUR	POLLED
	--		---	--

There is a deep sided power cow family on this pedigree!!
Pasture exposed to Notta 110B Jus Chillin 302F from April 5 to September 15, 2020.
CONSIGNED BY: TWIN LAKE LIVESTOCK

TWIN LAKE LIVESTOCK



LOT
19

JSF *Midnight Lady* 46F

YOGI GOES REDNECK 7Y
JSF TRADE SECRET 11A
MONNERY RIVER 7W

REDNECK WILD WILLY 2W
ASPEN ACRES LINDA LOU 10L
RIVER HILL SHOW BIZ 93S
MONNERY RIVER 7P

CODIAK HEAR THE GHOST GNK 22Z
JSF MIDNIGHT LADY 2C
PONDEROSA SPOTS A ROARIN 19Y

LEGACY UNRIVALED 12U
CODIAK URSULA GNK 3U
HEARTRIDGE ARIES 01W
PONDEROSA MIDNIGHT LADY 10U

	TATTOO	REG #	BIRTHDATE	BIRTH WEIGHT
PUREBRED FEMALE	JSF 46F	8520-PB	MAR. 20, 2018	70 LBS.
	MYOSTATIN	COAT COLOUR	POLLED	
	NON-CARRIER	HOMOZYGOUS BLACK	PP	

Midnight Lady packs everything you'd want in a female; style, femininity, thickness and structure. She comes from a long line of maternal foundation. Pasture exposed to Notta 110B Jus Chillin 302F from April 5 to September 15, 2020.

CONSIGNED BY: TWIN LAKE LIVESTOCK



LOT
20

SPOTS 'N SPROUTS *Emma* 1E

UNEEDA YAEL 06Y
SPOTS 'N SPROUTS BRAVO 118B
SHER SPECS SUNDAY 23Y

CODIAK OSCAR GNK 8S
TAMMY OF P.A.R. 06T
SPOTS 'N SPROUTS TALISMAN 101T
SHER SPECS HARRIETTE 12L

SIX STAR 82U ROYAL FLESH 101Y
SPOTS 'N SPROUTS 1B
SPOTS 'N SPROUTS 2U

STAR BANK KING GEORGE 82U
STAR BANK 53R
STYALS LIGHTNING LADD 14P
TWIN RIVER 4R

	TATTOO	REG #	BIRTHDATE	BIRTH WEIGHT
PUREBRED FEMALE	JKH 1E	7082-PB	FEB. 19, 2017	70 LBS.
	MYOSTATIN	COAT COLOUR	POLLED	
	--	---	--	

You know her dam; this one is stamped the same way with an added colour bonus.

Pasture exposed to Notta 110B Jus Chillin 302F from April 5 to September 15, 2020.

CONSIGNED BY: TWIN LAKE LIVESTOCK

TWIN LAKE LIVESTOCK

TWIN LAKE *Easy 2 Cee* 206E

LOT
21



RIVER HILL 26T WALKER 60W
NOTTA 60W CHIEF OF STAFF 1C
NOTTA 68L UPTOWN GIRL 16U

RIVER HILL TRAFFIC JAM 26T
RIVER HILL SHOW ME OFF 60S
STAR BANK LACERTA 68L
STAR BANK LEONID NIGHT 54L

SIX STAR 82U ROYAL FLESH 101Y
NOTTA 101Y CARA 206C
SPOTS 'N SPROUTS 20U

STAR BANK KING GEORGE 82U
STAR BANK 53R
STYALS LIGHTNING LADD 14P
SPOTS 'N SPROUTS 3P

	TATTOO	REG #	BIRTHDATE	BIRTH WEIGHT
PUREBRED FEMALE	TLL 206E	10236-PB	APR. 1, 2017	75 LBS.
	MYOSTATIN		COAT COLOUR	POLLED
	--		---	--

This cow has a great dam to back up her style and breeding potential!
Pasture exposed to Notta 110B Jus Chillin 302F from April 5 to September 15, 2020.
CONSIGNED BY: TWIN LAKE LIVESTOCK

TWIN LAKE *First Lady* 035F

LOT
22



SIX STAR 82U ROYAL FLESH 101Y
NOTTA 101Y BLACK CAP 151A
NOTTA 50S JANETTE 5W

STAR BANK KING GEORGE 82U
STAR BANK 53R
PRAIRIE HILL JOHN WAYNE 50S
NOTTA PRETENDER 64P

RIVER HILL 60W LINE DRIVE 54Z
RIVER HILL 54Z DEJA VU 035D
CODIAK GNK 35X

RIVER HILL 26T WALKER 60W
NOTTA PHO-FINISH 54P
C.A.M.Y. TORQUE 03T
CODIAK BONITA RKW 65M

	TATTOO	REG #	BIRTHDATE	BIRTH WEIGHT
PUREBRED FEMALE	TLL 035F	10237-PB	APR. 8, 2018	--
	MYOSTATIN		COAT COLOUR	POLLED
	--		---	--

A quaint, young cow that expresses lots of breed traits.
Pasture exposed to Notta 110B Jus Chillin 302F from April 5 to September 15, 2020.
CONSIGNED BY: TWIN LAKE LIVESTOCK

TWIN LAKE LIVESTOCK



LOT
23

LOT
23

NOTTA 110B *Jus Chillin* 302F

STAR BANK 64R REMEDY 9W
SPOTS 'N SPROUTS BART 110B
SPOTS 'N SPROUTS 2W

SPOTS 'N SPROUTS STANDS ALONE
NOTTA 300X THETA 11A
STAR BANK THETA 42T

NOTTA ROMEO 64R
STAR BANK 36R
STYALS LIGHTNING LADD 14P
STYALS MISS RKW 8N

STYALS LIGHTNING LADD 14P
SPOTS 'N SPROUTS 2R
SPOTS 'N SPROUTS NEFROM 101N
JANETTE OF P.A.R. 44H

	TATTOO	REG #	BIRTHDATE	BIRTH WEIGHT
PUREBRED MALE	JMG 302F	8637-PB	JAN. 23, 2018	84 LBS.
	MYOSTATIN	COAT COLOUR	POLLED	
	NON-CARRIER	HOMOZYGOUS BLACK	PP	

This one is calm, cool and correct. Any program that needs a temperament adjustment, he's the one!
CONSIGNED BY: TWIN LAKE LIVESTOCK

LOT
24

20 UNITS OF SEMEN - NOTTA 110B *Jus Chillin* 302F

LOT **24A** - 10 UNITS OF SEMEN
LOT **24B** - 10 UNITS OF SEMEN

Canada use only.
His calves can be seen through appointment and are for sale off of these females.
Minnamurra Pastoral Company Pty Limited has purchased the exclusive rights to all exportable semen.
Stored at Alta Genetics, Rocky View County, Alberta.
All cost borne by the purchaser.
CONSIGNED BY: TWIN LAKE LIVESTOCK

TWIN LAKE LIVESTOCK



RAVENWORTH PRAIRIE LILY 101C

LOT
25

PACKAGE OF 3 *Embryos* - OUTBACK *Joey* 25D X RAVENWORTH *Prairie Lily* 101C

CODIAK OH MY GOSH GNK 60A

OUTBACK JOEY 25D

RIVER HILL 54Z BELLA-JOY 25B

CLEAR VIEW TY 205R

CODIAK UNIQUE GNK 8R

RIVER HILL 60W LINE DRIVE 54Z

RIVER HILL 68 ULTIMATE JOY 25U

STAR BANK LACERTA 68L

RAVENWORTH PRAIRIE LILY 101C

RAVENWORTH PRAIRIE LILY 10Y

SPOTS 'N SPROUTS JUNO 103J

STAR BANK 55H

STAR BANK 64R RIO 6W

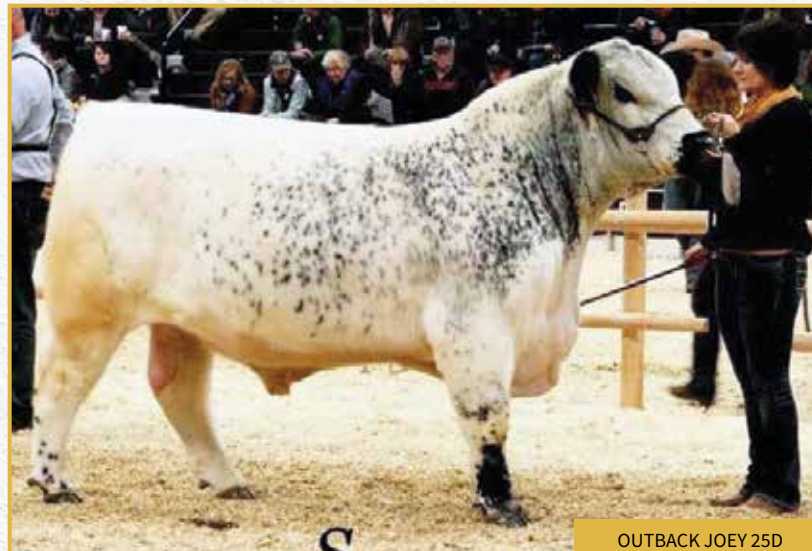
STAR BANK TARAZED 46T

Prairie Lily 101C is a Star Bank Lacerta daughter with tremendous length and eye appeal. We chose Outback Joey as a sire to increase size and guarantee 100% colour pattern on the offspring.

Embryos are stored at Alta Genetics, Rocky View County, Alberta.

All costs shall be borne by the purchaser.

CONSIGNED BY: TWIN LAKE LIVESTOCK



OUTBACK JOEY 25D

COULEE SPRINGS RANCH



LOT
26

COULEE SPRINGS RANCH *Abrew* 8A

BELMORAL'S SPECIAL 99H
A & W 15R
TRIPLE A GEM 15G

THUNDER 168D
LIGHTNING LADY 2Y
ASPEN ACRES T.N.T. 4Y
SPOTS AND SPROUTS 15Y

NOTTA ROMEO 64R
STAR BANK WITCHES BREW 16W
STAR BANK 89S

STAR BANK LACERTA 68L
STAR BANK 64L
STAR BANK 58L
STAR BANK 2H

	TATTOO	REG #	BIRTHDATE	BIRTH WEIGHT
PUREBRED FEMALE	CSR 8A	4310- PB	MAY 13, 2013	63 LBS.
	MYOSTATIN	COAT COLOUR	POLLED	
	NON-CARRIER	HOMOZYGOUS BLACK		PP

- Her maternal sister, Coulee Springs Ranch Brew 3B, sells as Lot 27.
 - A daughter, Coulee Springs Crewella 7C, was selected by Andchris Farms, Ingersoll, Ontario.
 - Her mother, Star Bank Witches Brew 16W, is a prolific donor female now working for INC Cattle Company, Saskatoon, Saskatchewan and her sire is the predictable, A & W 15R.
 - This larger framed female is well balanced with lots of volume.
 - Pasture exposed to Notta 119D Phantom 310F from May 28 to September 1, 2020.
- CONSIGNED BY: COULEE SPRINGS RANCH



LOT
26A

COULEE SPRINGS RANCH *Hank* 6H

HWY. 4 SPECKLE PARK 2H
NOTTA 2H DECK HAND 318D
STAR BANK 54R

PARKLAND SPECKLE PARKS 5B
LEIGH-AL-ANN PRINCESS 1B
STAR BANK 94M
STAR BANK 11

	TATTOO	REG #	BIRTHDATE	BIRTH WEIGHT
PUREBRED MALE	CSR 6H	11044- PB	APR. 6, 2020	87 LBS.
	MYOSTATIN	COAT COLOUR	POLLED	
	CARRIER	RED CARRIER		PP

CONSIGNED BY: COULEE SPRINGS RANCH

COULEE SPRINGS RANCH



FEATURE

LOT
27

COULEE SPRINGS RANCH *Brew* 3B

STYALS LIGHTNING LADD 14P
SPOTS 'N SPROUTS EXCEL 103X
CODIAK NADIA RKW 4N

HWY.4 SPECKLE PARK 20K
LIGHTNING LADY 10C
CODIAK PRAIRIE FIRE RKW 14J
ATIM LADY 3D

NOTTA ROMEO 64R
STAR BANK WITCHES BREW 16W
STAR BANK 89S

STAR BANK LACERTA 68L
STAR BANK 64L
STAR BANK 58L
STAR BANK 2H

PUREBRED FEMALE

TATTOO	REG #	BIRTHDATE	BIRTH WEIGHT	MYOSTATIN	COAT COLOUR	POLLED
CSR 3B	5340- PB	MAY 13, 2014	71 LBS.	CARRIER	HOMOZYGOUS BLACK	HP

- Her maternal sister, Coulee Springs Ranch Abrew 8A, sells as Lot 26. Three daughters sell; Coulee Springs Ranch Daphne 4D as Lot 29, Coulee Springs Ranch Ember 3E as Lot 28 and Coulee Springs Ranch Farrah 3F as Lot 30.
- Daughters of Witches Brew carry a productive profile in any herd. This larger framed granddaughter of Styals Lightning Ladd is a great milking female with predictable maternal traits.
- Calved twins in late May 2019. So opted to not breed for 2020.
- Pasture exposed to Notta 119D Phantom 310F from May 28 to September 1, 2020.

CONSIGNED BY: COULEE SPRINGS RANCH

COULEE SPRINGS RANCH



LOT
28

COULEE SPRINGS RANCH *Ember* 3E

SIX STAR 82U ROYAL FLESH 101Y
NOTTA 101Y CASINO ROYAL 302C
NOTTA PRETENDER 33X

STAR BANK KING GEORGE 82U
STAR BANK 53R
PRAIRIE HILL JOHN WAYNE 50S
NOTTA PRETENDER 64P

SPOTS 'N SPROUTS EXCEL 103X
COULEE SPRINGS RANCH BREW 3B
STAR BANK WITCHES BREW 16W

STYALS LIGHTNING LADD 14P
CODIAK NADIA RKW 4N
NOTTA ROMEO 64R
STAR BANK 89S

	TATTOO	REG #	BIRTHDATE	BIRTH WEIGHT
PUREBRED FEMALE	CSR 3E	8654- PB	APR. 17, 2017	61 LBS.
	MYOSTATIN	COAT COLOUR	POLLED	
	CARRIER	HOMOZYGOUS BLACK		HP

- Her mother, Coulee Springs Ranch Brew 3B, sells as Lot 27.
 - Her full sister, 3F, sells as Lot 30.
 - Maternal sister, 4D, sells as Lot 29.
 - This three year old daughter of Notta 101Y Casino Royal is coming into her prime production years. Her genetics are stacked with power and when you add Witches Brew to the mix, this is a sound investment.
 - Pasture exposed to Notta 119D Phantom 310F from May 28 to September 1, 2020.
- CONSIGNED BY: COULEE SPRINGS RANCH



LOT
28A

COULEE SPRINGS RANCH *Haven* 9H

HWY. 4 SPECKLE PARK 2H
NOTTA 2H DECK HAND 318D
STAR BANK 54R

PARKLAND SPECKLE PARKS 5B
LEIGH-AL-ANN PRINCESS 1B
STAR BANK 94M
STAR BANK 11

	TATTOO	REG #	BIRTHDATE	BIRTH WEIGHT
PUREBRED FEMALE	CSR 9H	11047- PB	APR. 18, 2020	72 LBS.
	MYOSTATIN	COAT COLOUR	POLLED	
	CARRIER	HOMOZYGOUS BLACK		HP

- Just a late April prospect out of a cow with power.
- CONSIGNED BY: COULEE SPRINGS RANCH

COULEE SPRINGS RANCH



FEATURE

LOT
29

COULEE SPRINGS RANCH *Daphne* 4D

P.A.R. TOUCH DOWN 600T
UNEEDA WONDERBAR 05W
LANDRY OF P.A.R. 5L

CALAMASUE 10R
PRETTY LADY OF P.A.R. 600P
P.A.R. JAGR 68J
DOUBLE RR ANGEL 151'88

SPOTS 'N SPROUTS EXCEL 103X
COULEE SPRINGS RANCH BREW 3B
STAR BANK WITCHES BREW 16W

STYALS LIGHTNING LADD 14P
CODIAK NADIA RKW 4N
NOTTA ROMEO 64R
STAR BANK 89S

PUREBRED FEMALE	TATTOO	REG #	BIRTHDATE	BIRTH WEIGHT	MYOSTATIN	COAT COLOUR	POLLED
	CSR 4D	7557- PB	MAR. 29 2016	65 LBS.	NON-CARRIER	HOMOZYGOUS BLACK	HP

- Her mother, Coulee Springs Ranch Brew 3B, sells as Lot 27.
- Maternal sisters... 3E sells as Lot 28 and 3F sells as Lot 30.
- This Witches Brew granddaughter sired by Uneeda Wonderbar 05W has three paternal sisters in our herd.
- Calved April 2, 2020. Calf froze as it was -28°C out, not her fault.
- Pasture exposed to Notta 119D Phantom 310F from May 28 to September 1, 2020.

CONSIGNED BY: COULEE SPRINGS RANCH

COULEE SPRINGS RANCH



LOT
30

COULEE SPRINGS RANCH *Farrah* 3F

SIX STAR 82U ROYAL FLESH 101Y
NOTTA 101Y CASINO ROYAL 302C
NOTTA PRETENDER 33X

STAR BANK KING GEORGE 82U
STAR BANK 53R
PRAIRIE HILL JOHN WAYNE 50S
NOTTA PRETENDER 64P

SPOTS 'N SPROUTS EXCEL 103X
COULEE SPRINGS RANCH BREW 3B
STAR BANK WITCHES BREW 16W

STYALS LIGHTNING LADD 14P
CODIAK NADIA RKW 4N
NOTTA ROMEO 64R
STAR BANK 89S

	TATTOO	REG #	BIRTHDATE	BIRTH WEIGHT
PUREBRED FEMALE	CSR 3F	9421- PB	MAR. 19, 2018	65 LBS.
	MYOSTATIN	COAT COLOUR	POLLED	
	CARRIER	HOMOZYGOUS BLACK	PP	

- Her mother, Coulee Springs Ranch Brew 3B, sells as Lot 27.
 - Her full sister, 3E, sells as Lot 28.
 - For those looking to start a new cow family or add a front pasture female, look no further.
 - This two year old has done a great job on her first calf and will add high maternal values where ever she goes... fertility, milk and performance all in one package.
 - Pasture exposed to Notta 119D Phantom 310F from May 28 to September 1, 2020.
- CONSIGNED BY: COULEE SPRINGS RANCH



LOT
30A

COULEE SPRINGS RANCH *Hazel* 3H

HWY. 4 SPECKLE PARK 2H
NOTTA 2H DECK HAND 318D
STAR BANK 54R

PARKLAND SPECKLE PARKS 5B
LEIGH-AL-ANN PRINCESS 1B
STAR BANK 94M
STAR BANK 11H

	TATTOO	REG #	BIRTHDATE	BIRTH WEIGHT
PUREBRED FEMALE	CSR 3H	11042- PB	MAR. 27, 2020	78 LBS.
	MYOSTATIN	COAT COLOUR	POLLED	
	CARRIER	HOMOZYGOUS BLACK	PP	

- We can only wish that all first calvers could do such a job!
- CONSIGNED BY: COULEE SPRINGS RANCH

COULEE SPRINGS RANCH

COULEE SPRINGS RANCH *Dohdee* 5D

LOT
31

P.A.R. TOUCH DOWN 600T
UNEDA WONDERBAR 05W
LANDRY OF P.A.R. 5L

CALAMASUE 10R
PRETTY LADY OF P.A.R. 600P
P.A.R. JAGR 68J
DOUBLE RR ANGEL 151'88

LEGACY UNRIVALED 12U
CODIAK NANCYS SURPRIZE GNK 11Y
CODIAK SHAMELESS 17L

LEGACY SCOUT 10S
STAR BANK 34R
HWY. 4 SPECKLE PARK 2H
CODIAK ACRES ELENOR 13E

	TATTOO	REG #	BIRTHDATE	BIRTH WEIGHT
PUREBRED FEMALE	CSR 5D	6861- PB	APR. 13, 2016	52 LBS.
	MYOSTATIN	COAT COLOUR	POLLED	
	NON-CARRIER	HOMOZYGOUS BLACK	PP	

- One of our outstanding cows that should be a donor in any program.
 - Beautiful udder, lots of chest, barrel and body mass, this four year old carries older, different genetics.
 - Here is your opportunity to acquire a front pasture cow!
 - Pasture exposed to Notta 119D Phantom 310F from May 28 to September 1, 2020.
- CONSIGNED BY: COULEE SPRINGS RANCH



COULEE SPRINGS RANCH *Haylee* 10H

LOT
31A

HWY. 4 SPECKLE PARK 2H
NOTTA 2H DECK HAND 318D
STAR BANK 54R

PARKLAND SPECKLE PARKS 5B
LEIGH-AL-ANN PRINCESS 1B
STAR BANK 94M
STAR BANK 11H

	TATTOO	REG #	BIRTHDATE	BIRTH WEIGHT
PUREBRED FEMALE	CSR 10H	11048- PB	APR. 18, 2020	81 LBS.
	MYOSTATIN	COAT COLOUR	POLLED	
	NON-CARRIER	HOMOZYGOUS BLACK	PP	

- Analyze her mother and you will take a second look at this late April baby!
- CONSIGNED BY: COULEE SPRINGS RANCH



COULEE SPRINGS RANCH



LOT
32

COULEE SPRINGS RANCH

Echo 7E

SIX STAR 82U ROYAL FLESH 101Y
NOTTA 101Y CASINO ROYAL 302C
NOTTA PRETENDER 33X

STAR BANK KING GEORGE 82U
STAR BANK 53R
PRAIRIE HILL JOHN WAYNE 50S
NOTTA PRETENDER 64P

PRAIRIE HILL ENTICER 89G
SPOTS 'N SPROUTS 3P
SPOTS'N SPROUTS 5J

DEB-RAY FRANTIC FRITZ 2B
LIGHTNING LADY 10Z
P.A.R. GREAT WESTERN 11F
SPOTS 'N SPROUTS 21E

PUREBRED FEMALE	TATTOO	REG #	BIRTHDATE	BIRTH WEIGHT
	CSR 7E	8655- PB	JUL. 29, 2017	85 LBS.
	MYOSTATIN	COAT COLOUR	POLLED	
	NON-CARRIER	HOMOZYGOUS BLACK	PP	

- Echo is one of the farm favorites. This summer born female was flushed IVF as a heifer and the embryos sell.
 - Genetically, she is highly maternal with Royal Flesh and Spots 'N Sprouts 3P.
 - This donor has an exciting daughter at side and a transplant son for your evaluation.
 - Sound footed, beautiful uddered, she has a wonderful disposition and carries the volume and body mass that we all admire.
 - Buy them where you can find them... front pasture material!
 - Pasture exposed to Notta 119D Phantom 310F from May 28 to September 1, 2020.
- CONSIGNED BY: COULEE SPRINGS RANCH



LOT
32A

COULEE SPRINGS RANCH

Honey 4H

HWY. 4 SPECKLE PARK 2H
NOTTA 2H DECK HAND 318D
STAR BANK 54R

PARKLAND SPECKLE PARKS 5B
LEIGH-AL-ANN PRINCESS 1B
STAR BANK 94M
STAR BANK 11H

PUREBRED FEMALE	TATTOO	REG #	BIRTHDATE	BIRTH WEIGHT
	CSR 4H	11043- PB	MAR. 29, 2020	88 LBS.
	MYOSTATIN	COAT COLOUR	POLLED	
	NON-CARRIER	HOMOZYGOUS BLACK	PP	

- This young lady will make a great project for juniors of any age!
- CONSIGNED BY: COULEE SPRINGS RANCH

COULEE SPRINGS RANCH

COULEE SPRINGS RANCH *Here* 1H

LOT
33

UNEEDA ZAPPER 13Z
CAJA ZEPELIN 1B
NOTTA 60W PHOTO-FINISH 1Z

UNEEDA WALTER 21W
MISTY FRITZ OF P.A.R. 13M
RIVER HILL 26T WALKER 60W
NOTTA PHO-FINISH 54P

NOTTA 101Y CASINO ROYAL 302C
COULEE SPRINGS RANCH ECHO 7E
SPOTS 'N SPROUTS 3P

SIX STAR 82U ROYAL FLESH 101Y
NOTTA PRETENDER 33X
PRAIRIE HILL ENTICER 89G
SPOTS'N SPROUTS 5J

PUREBRED MALE	TATTOO	REG #	BIRTHDATE	BIRTH WEIGHT
	CSR 1H	11021- PB	MAR. 15, 2020	72 LBS.
	MYOSTATIN	COAT COLOUR		POLLED
	CARRIER	HOMOZYGOUS BLACK		PP

- A transplant herd sire prospect sired by the popular and predictable CAJA Zeppelin 1B. His birth weight and phenotype make him a candidate for either pasture. It is awhile until spring but buy them when you can find them.
- CONSIGNED BY: COULEE SPRINGS RANCH



PACKAGE OF 4 IVF *Embryos*

LOT
33A

CAJA *Zeppelin* 1B x COULEE SPRINGS RANCH *Echo* 7E

UNEEDA ZAPPER 13Z
CAJA ZEPELIN 1B
NOTTA 60W PHOTO-FINISH 1Z

UNEEDA WALTER 21W
MISTY FRITZ OF P.A.R. 13M
RIVER HILL 26T WALKER 60W
NOTTA PHO-FINISH 54P

NOTTA 101Y CASINO ROYAL 302C
COULEE SPRINGS RANCH ECHO 7E
SPOTS 'N SPROUTS 3P

SIX STAR 82U ROYAL FLESH 101Y
NOTTA PRETENDER 33X
PRAIRIE HILL ENTICER 89G
SPOTS'N SPROUTS 5J

- Full siblings to Lot 35.
 - Embryos are stored at Bow Valley Genetics, Brooks, Alberta.
 - All costs shall be borne by the purchaser.
- CONSIGNED BY: COULEE SPRINGS RANCH



CAJA ZEPELIN 1B

COULEE SPRINGS RANCH



LOT
34

CODIAK *Dazzie* GNK 24D

A & W 15R
HS UNTAPPED 3A
NOTTA 2R PRETENDER 4T

RAVEN MEADOWS MAGNUM 10N
UPTO SPECS TEEKA 8T
PRAIRIE HILL REBA 154F

BELMORAL'S SPECIAL 99H
TRIPLE A GEM 15G
P.A.R. RILLEY 2R
NOTTA PRETENDER 64P

SPRUCE LANE VENTURE 3J
PARKLAND SPECKLE PARK 10J
THUNDER 1C
SPOTS 'N SPROUTS 1D

	TATTOO	REG #	BIRTHDATE	BIRTH WEIGHT
PUREBRED FEMALE	GNK 24D	8566- AP	APR. 12, 2016	71 LBS.
	MYOSTATIN	COAT COLOUR	POLLED	
	NON-CARRIER	HOMOZYGOUS BLACK		PP

- A daughter of the two-time Canadian National Champion Bull, HS Untapped going back to A & W 15R.
 - This heavy milking daughter will add maternal power into all her progeny.
 - Her heifer calf at foot should cause some excitement and her yearling son will be very good property to own.
 - Pasture exposed to Notta 119D Phantom 310F from May 28 to September 1, 2020.
- CONSIGNED BY: COULEE SPRINGS RANCH



LOT
34A

COULEE SPRINGS RANCH *Hope* 8H

HWY. 4 SPECKLE PARK 2H
NOTTA 2H DECK HAND 318D
STAR BANK 54R

PARKLAND SPECKLE PARKS 5B
LEIGH-AL-ANN PRINCESS 1B
STAR BANK 94M
STAR BANK 11H

	TATTOO	REG #	BIRTHDATE	BIRTH WEIGHT
PUREBRED FEMALE	CSR 8H	11046- PB	APR. 11, 2020	91 LBS.
	MYOSTATIN	COAT COLOUR	POLLED	
	NON-CARRIER	HOMOZYGOUS BLACK		PP

- Hope has been an exciting addition from birth. With championship blood in her, she will be an asset to any program she goes to... do not miss her sale day!
- CONSIGNED BY: COULEE SPRINGS RANCH

COULEE SPRINGS RANCH



FEATURE

LOT
35

COULEE SPRINGS RANCH *Gronk* 3G

MOOVIN ZPOTZ AVENGER 28A
WRANGLER MR PERFECT 8D
ANGEL OF P.A.R. 8Z

MOOVIN ZPOTZ CAMARO 6X
HWY 4 SPECKLE PARK 4R
P.A.R. XCALABAR 6X
ANGEL OF P.A.R. 8U

HS UNTAPPED 3A
CODIAK DAZZIE GNK 24D
UPTO SPECS TEEKA 8T

A & W 15R
NOTTA 2R PRETENDER 4T
RAVEN MEADOWS MAGNUM 10N
PRAIRIE HILL REBA 154F

PUREBRED MALE

TATTOO	REG #	BIRTHDATE	BIRTH WEIGHT	MYOSTATIN	COAT COLOUR	POLLED
CSR 3G	11020- PB	APR. 24, 2019	85 LBS.	NON-CARRIER	HOMOZYGOUS BLACK	PP

- Gronk is a long sided, thick butted herd sire prospect with a large scrotal development.
- He is sired by the Canadian National Champion, Wrangler Mr Perfect 8D, and out of a daughter of a two-time Agribition Champion HS Untapped... this bull is bred in the purple. If you select bulls by the quality of their mothers, do not overlook this herd bull!

CONSIGNED BY: COULEE SPRINGS RANCH

COULEE SPRINGS RANCH



LOT
36

COULEE SPRINGS RANCH *Dory* 8D

P.A.R. TOUCH DOWN 600T
UNEEDA WONDERBAR 05W
LANDRY OF P.A.R. 5L

CALAMASUE 10R
PRETTY LADY OF P.A.R. 600P
P.A.R. JAGR 68J
DOUBLE RR ANGEL 151'88
STYALS LIGHTNING LADD 14P
CODIAK NADIA RKW 4N
CODIAK TRUMP GNK 20T
A & W 013U

SPOTS 'N SPROUTS EXCEL 103X
COULEE SPRINGS RANCH EARLY 1A
CODIAK HAZEL GNK 13Y

PUREBRED FEMALE	TATTOO	REG #	BIRTHDATE	BIRTH WEIGHT
	CSR 8D	6862- PB	APR. 19, 2016	60 LBS.
MYOSTATIN	COAT COLOUR	POLLED		
CARRIER	RED CARRIER	HP		

- Dory is a deep bodied, good uddered, gentle daughter of Uneeda Wonderbar.
 - This four year old has lots of milk as she enters the prime of her production life.
 - Pasture exposed to Notta 119D Phantom 310F from May 28 to September 1, 2020.
- CONSIGNED BY: COULEE SPRINGS RANCH



LOT
36A

COULEE SPRINGS RANCH *Hussain* 7H

HWY. 4 SPECKLE PARK 2H
NOTTA 2H DECK HAND 318D
STAR BANK 54R

PARKLAND SPECKLE PARKS 5B
LEIGH-AL-ANN PRINCESS 1B
STAR BANK 94M
STAR BANK 11

PUREBRED MALE	TATTOO	REG #	BIRTHDATE	BIRTH WEIGHT
	CSR 7H	11045- PB	APR. 6, 2020	66 LBS.
MYOSTATIN	COAT COLOUR	POLLED		
NON-CARRIER	RED CARRIER	HP		

CONSIGNED BY: COULEE SPRINGS RANCH

COULEE SPRINGS RANCH

NOTTA 119D *Phantom* 310F

LOT
37



NOTTA 101Y BARCODE 113B
WRANGLER MR COMPLETE 119D
RAVENWORTH PRAIRIE LILY 119B

SIX STAR 82U ROYAL FLESH 101Y
SPOTS 'N SPROUTS 3R
RIVER HILL 12X ZAAR 7Z
STAR BANK TARAZED 46T

UNEEDA ZAPPER 13Z
NOTTA 13Z PHOTO-FINISH 208D
NOTTA 15R PHOTO-FINISH 4Z

UNEEDA WALTER 21W
MISTY FRITZ OF P.A.R. 13M
A & W 15R
NOTTA PHO-FINISH 54P

	TATTOO	REG #	BIRTHDATE	BIRTH WEIGHT
PUREBRED MALE	JMG 310F	8665- PB	FEB. 25, 2018	76 LBS.
	MYOSTATIN	COAT COLOUR	POLLED	
	NON-CARRIER	HOMOZYGOUS BLACK	HP	

- Notta Phantom 310F is a powerful genetic package with a low birth weight. He was campaigned at Agribition as a calf and a yearling then we purchased him in the Supreme Sale in April 2019. He excels in body type, free moving and easy keeping whether he is at home or out in the pasture breeding. Plan to see the Phantom!

CONSIGNED BY: COULEE SPRINGS RANCH

LOT
38

100 UNITS OF SEMEN - NOTTA 119D *Phantom* 310F

- LOT **38A** - 10 UNITS OF SEMEN
- LOT **38B** - 10 UNITS OF SEMEN
- LOT **38C** - 10 UNITS OF SEMEN
- LOT **38D** - 10 UNITS OF SEMEN
- LOT **38E** - 10 UNITS OF SEMEN
- LOT **38F** - 10 UNITS OF SEMEN
- LOT **38G** - 10 UNITS OF SEMEN
- LOT **38H** - 10 UNITS OF SEMEN
- LOT **38I** - 10 UNITS OF SEMEN
- LOT **38J** - 10 UNITS OF SEMEN

- Canada use only.
- Stored at Bow Valley Genetics, Brooks, Alberta.
- All cost borne by the purchaser.

CONSIGNED BY: COULEE SPRINGS RANCH

LOT
39

100 UNITS OF SEMEN - NOTTA 119D *Phantom* 310F

- LOT **39A** - 10 UNITS OF SEMEN
- LOT **39B** - 10 UNITS OF SEMEN
- LOT **39C** - 10 UNITS OF SEMEN
- LOT **39D** - 10 UNITS OF SEMEN
- LOT **39E** - 10 UNITS OF SEMEN
- LOT **39F** - 10 UNITS OF SEMEN
- LOT **39G** - 10 UNITS OF SEMEN
- LOT **39H** - 10 UNITS OF SEMEN
- LOT **39I** - 10 UNITS OF SEMEN
- LOT **39J** - 10 UNITS OF SEMEN

- Exportable to USA, Australia and New Zealand.
- Stored at Bow Valley Genetics, Brooks, Alberta.
- All cost borne by the purchaser.

CONSIGNED BY: COULEE SPRINGS RANCH

COULEE SPRINGS RANCH

LOT
40

4 UNITS OF SEMEN - RIVER HILL 12X *Ai'Nan* 94A



CODIAK TRUMP GNK 20T
CODIAK FIDDLER GNK 12X
CODIAK SALLY SUE GNK 17U

PRAIRIE HILL MASTERPLAN II 87L
PRAIRIE HILL PASSION 94P
PRAIRIE HILL FANCY PANTS 93J

HWY. 4 SPECKLE PARK 20L
EL RANCHO NO GOTTO SHANS 02J
RAVEN MEADOWS MAGNUM 10N
CODIAK CDK 26P

PRAIRIE HILL MASTERPLAN 97G
PRAIRIE HILL LUCKY ROLLIE 87G
PRAIRIE HILL ENTICER 89G
PRAIRIE HILL 2G

	TATTOO	REG #	BIRTHDATE	BIRTH WEIGHT
PUREBRED MALE	BED 94A	4278-PB	MAR. 31, 2013	90 LBS.
	MYOSTATIN	COAT COLOUR	POLLED	

- Canada use only.
- Stored at Bow Valley Genetics, Brooks, Alberta.
- All cost borne by the purchaser.

CONSIGNED BY: COULEE SPRINGS RANCH



REF
SIRE

NOTTA 2H *Deck Hand* 318D

PARKLAND SPECKLE PARKS 5B
HWY. 4 SPECKLE PARK 2H
LEIGH-AL-ANN PRINCESS 1B

STAR BANK 94M
STAR BANK 54R
STAR BANK 11H

DOUBLE RR RASCAL 138'88
PARKLAND SPECKLE PARKS 2Y
ASPEN ACRES T.N.T. 4Y
LEIGH-ANN 1Z

SPOTS 'N SPROUTS JUNO 103J
JANETTE OF P.A.R. 44H
NORALTA 9E
LIGHTNING LADY 19C

	TATTOO	REG #	BIRTHDATE	BIRTH WEIGHT
PUREBRED MALE	JMG 318D	6901-PB	MAR. 24, 2016	81 LBS.
	MYOSTATIN	COAT COLOUR	POLLED	
	NON-CARRIER	HOMOZYGOUS BLACK	PP	

NOTTA 2H DECK HAND 318D AS A YEARLING

TERMS & CONDITIONS...

TERMS:

The terms of the sale are cash or cheque, payable at par at the sale location. The right of property shall not pass until after settlement has been made; no invoicing on buyers in attendance unless previous arrangements have been made. Every animal sells to the highest bidder and in cases of disputes, the auctioneer's decision will be final. Announcements from the auction block will take precedence over the printed matter in the catalogue. Current exchange rates will be announced sale day. All monies are in Canadian funds.

CERTIFICATE OF REGISTRATIONS:

Each purebred animal will carry papers issued by the Canadian Speckle Park Association. A certificate of registry duly transferred will be furnished to the buyer for each animal after payment has been made.

HEALTH:

All animals in the sale have met all necessary health requirements.

GUARANTEE:

All sellers and buyers of Speckle Park cattle in this sale are expected to be knowledgeable of and to abide by the Guidelines for Seller and Buyer Expectations and the By-laws of the Canadian Speckle Park Association. These documents are available from the Association's office.

PREGNANCY INFORMATION:

All serviceable age females have been pregnancy examined by an accredited veterinarian, giving an estimated length of gestation. This estimated gestation period shall be used only as a guideline to calving and is not a guarantee of actual service.

LIABILITIES:

All persons attend the sale at their own risk. The seller, facility owner and sale manager assume no liability legal or otherwise, for any accidents that occur. It is understood that T Bar C Cattle Co. (2013) Ltd. is acting only as a medium between buyer and seller and is not responsible for any failure on the part of either party to live up to his obligations. Neither does T Bar C Cattle Co. (2013) Ltd. assume any financial obligations to collect or enforce collection of any monies between parties and any legal action that may in exceptional cases be taken must be between the buyer and the seller. T Bar C Cattle Co. (2013) Ltd. assumes no responsibility for any credit extended by the seller to the buyer. The buyer must look to the seller for fulfillment of all guarantees and representations made hereunder.

DELIVERY:

Every assistance will be given in getting your purchases home. Each animal becomes the risk of the purchaser as soon as sold.

PHONE, MAIL, WIRE BIDS:

Bidders unable to attend the sale may phone, wire or mail their bids and instructions to the sale manager, auctioneer or special representatives. Bids must be received in sufficient time prior to the sale.

INSURANCE:

We strongly recommend that insurance is purchased for full value.

ERRORS:

All announcements at sale time, written or oral, supersede any written material in the catalogue.

NOTES...

Return Undeliverable
Canadian Addresses To:
T Bar C Cattle Co. Ltd.
Box 2330
Warman, SK S0K 4S0



2020
Legendary
Ladies
SPECKLE PARK SALE

Created By:
Today's
Publishing