

BLAIR-ATHOL HAROLDSONS

& Friends

With...

- ROSELAWN Polled Herefords
- MANNS Herefords



Sunday, October 18, 2020
1:00 PM | Arcola, SK

BLAIR-ATHOL HAROLDSONS & Friends

Sunday,
October 18, 2020

1:00 PM • At the Farm • Arcola, SK



Blair-Athol

**Blair Athol Farms
The Lees Family**

Box 386, Arcola, SK
S0C 0G0
blairatholfarms@sasktel.net
www.blairatholfarms.com

Duncan & Val

Ph/Fax: 306-455-2619
C: 306-577-9703

**Jeff, Grace, Christin, Kylee,
Jackson, Hannah & Josie**
C: 306-577-1375



Haroldson's

**Haroldson's Polled Herefords
Lenna, Kristy, Chad Wilson**

Box 372, Wawota, SK S0G 5A0
C: 306-577-1256 Fax: 306-739-2902
chad_wilson79@hotmail.com
www.haroldsons.com



Roselawn

Roselawn Polled Herefords

Wally & Jackie Mitchell
Kailey, Nick, Logan & Hannah Penner
Brady Mitchell

Box 782, Killarney, MB R0K 1G0
Ph: 204-523-8713
C: 204-534-8204
jmitchell@goinet.ca
www.roselawnfarms.com



Manns

Manns Polled Herefords

Steven, Regan, Kennedy & Rory Manns
Roy & Sandra Manns

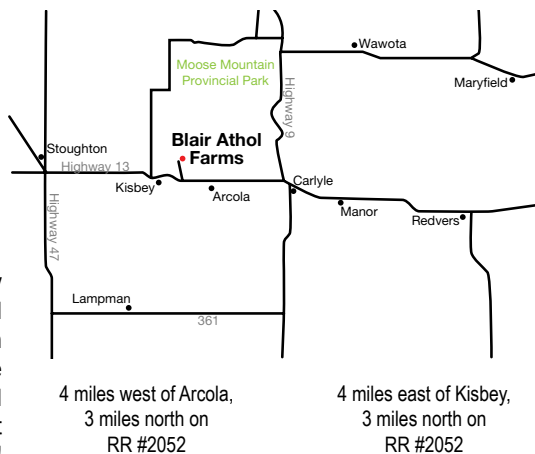
Box 478, Austin, MB R0H 0C0
Ph: 204-466-2960
C: 204-526-0426
Roy: 204-466-2722
mannsstevend@gmail.com

BE A PART OF THE SASKATCHEWAN SWEEP "STEAKS"

Friday, October 16	Lone Pine/Airess Acres Invitational Event	2:00 p.m.
Saturday, October 17	ANL/Glenlees Polled Herefords & Guests Sale	1:00 p.m.
Sunday, October 18	Blair-Athol/Haroldson's & Friends	1:00 p.m.
Monday, October 19	Square D Annual Production Sale	1:00 p.m.

ATTENTION JUNIORS!

This offering is loaded with high quality show prospects that are backed with maternal power! We are willing to assist Juniors with getting your purchases to Bonanza 2021. We are willing to feed, breed, halter break, and arrange delivery to the show. Please contact any of the sale consignors for more details!



View the catalogue online at www.buyagro.com

FROM THE DESK At T Bar...

Welcome to the 23rd edition of Blair Athol/Haroldson's and Friends Fall Female Sale at the Blair- Athol Farm, Arcola, Saskatchewan. No doubt, this Sunday in October continues to set records and a pace for the breed for all those who are serious about breeding great seedstock.

Duncan and Jeff have assembled one of their most consistent sets of females ever. The Blair Athol program is one of the oldest Hereford Breeding establishments in Saskatchewan and the cattle they have bred have impacted the breed worldwide.

This past fall, Chad again captured Premier Breeder and Premier Exhibitor banners at the Canadian National Show in Regina... Chad ... it seems to be becoming a habit, but the results have been amazing for you and your partners... congratulations!

The best barometer in deciding where to purchase female breeding stock can be determined by bull sale results. The commercial cattleman sitting in the seats buying your bulls, select them by the quality, and that factor is determined by the depth in a program. These folks hosted the best Hereford sale last spring selling yearlings... you decide where you want to shop!

The sale offering will speak for itself, Mann's and Roselawn dig deep into their programs to maintain the status of quality in this leading event... they will be value-added.

Stop by any of these breeding units prior to the sale and preview their offering and do not hesitate to give any a call and discuss the stock and your breeding intensions. Remember that only at events such as these can you acquire your front pasture requirements for the future.

During these times, feel free to call anyone on our T Bar C Team to discuss or purchase any of the cattle offered. We will be pleased to assist in a professional and confidential manner.

Sale Management:



Box 2330 Warman, SK S0K 4S0
Ph: (306) 933-4200
Fax: (306) 934-0744
info@tbarc.com
www.buyagro.com

Chris Poley



Chris Poley
306-220-5006



Shane Michelson
403-363-9973



Ben Wright
519-374-3335

Sale Day Phones

Chris Poley 306-220-5006
Shane Michelson 403-363-9973
Ben Wright 519-374-3335

Sale Staff

Auctioneer:
Chris Poley 306-220-5006
Ringside:
Shane Michelson, T Bar C Cattle Co. 403-363-9973
Ben Wright, T Bar C Cattle Co. 519-374-3335
Kevin Murnin, American Hereford Assoc. 406-853-4638

Marketing Agent:

Ken Wray 204-686-2289

Trucking:

H.S. Knill 877-422-3106

Insurance:

Alameda Agencies Ltd., Bonnie Thompson 306-489-2258

WE WILL BE FOLLOWING COVID PROVINCIAL REGULATIONS REGARDING THE SALE DAY MEAL.

Watch for Videos of all the lots at
www.dlms.ca or www.buyagro.com

Hotel Accommodations

Bear Claw Casino & Hotel, Carlyle, SK (Sale Headquarters) 306-577-4588
Kenosee Inn, Kenosee, SK 306-577-2099
Ramada, Carlyle, SK 866-654-7128 or 306-453-2686
Western Star Inns & Suites, Carlyle, SK 306-453-2700
Chaparral Inn, Arcola, SK 306-455-2275
Poplar Tree Inn, Stoughton, SK 306-457-3540
Western Star Inn & Suites, Stoughton, SK 306-457-3000
*Please call directly to the accommodation of your choice.

REMEMBER ACCOMMODATIONS ARE AT A PREMIUM – SO BOOK EARLY!

Watch and bid live at:

Internet Bidding Available

DLMS
www.dlms.ca

For more information call DLMS:
Mark Shologan 780.699.5082 or
DLMS Purebred Team 780.991.3025

SALE REPRESENTATIVES

Canadian Hereford Association
Albert Rimke, President/Manitoba
Nels Nixdorff, Vice President/Alberta
Stephen Scott, Executive Director

Saskatchewan Hereford Association
Lyal Heidecker, President & Treasurer
Matt Lohner, Vice President
Stephen Myer, Past President & Secretary

Manitoba Hereford Association
Steven Manns, President
Jay Rimke, Vice President
Bobbi Rankin, Secretary

Blair-Athol Farms



Passion 18H

Take a look at this heifer calf and her paternal sister, Lot 10, and you will know why we are so excited about the job Patent is doing around here. Passion 18H has muscle and length yet maintains tremendous broodiness and femininity. Were it not for COVID she would look awesome at Agribition. I would suggest she will look just as awesome in 2021. Her two year old dam has done a super job.

1 Blair-Athol 124E *Passion 18H*

Female PC03072073 DVL 18H Feb. 13, 2020

MCCOY 70Y SKYFALL 53A DLF HYF IEF
 MCCOY 53A PATENT 124E DLF HYF IEF
 MCCOY 719T SUSIE ET 417B DLF HYF IEF

C&T 7B DOUBLE D 11D DLF HYF IEF
 C&T 11D CATALINA 5F
 REMITALL-W CATALINA 67D

JDH 117R EQUITY 70Y ET DLF HYF IEF
 MCCOY 25M ALISON 64W DLF HYF IEF MSUDF
 TH 122 71I VICTOR 719T DLF HYF IEF MDF
 MCCOY 58G SUSIE 33K
 REMITALL-W START ME UP ET 7B DLF HYF IEF MDF
 ANL P606 NORTHERN LADY 38X
 TH 223 71I VICTOR 755T DLF HYF IEF
 REMITALL-WEST CATALINA 136B

CE	BW	WW	YW	MM	TM
-2.9	4.6	61.8	97.5	25.4	56.3

2 Blair-Athol H *Maybelline 62H*

Female PC03072179 DVL 62H Feb. 28, 2020

NJW 76S 4037 DURANGO SPIRIT 174X DLF HYF IEF
 NJW 103Y 174X DIABLO 156C ET
 NJW 101U 100W SPIRITQUEEN 103Y

WSF CAN-AM PRINCE 143 DLF HYF IEF
 MIL-WRAY PAMELA 7B
 KTCT 10S AMY 11W

THM DURANGO 4037 DLF HYF IEF
 NJW 55N STARDUST 76S
 NJW 73S M326 TRUST 100W ET DLF HYF IEF
 NJW 4037 55N FREE SPIRIT 101U
 RVP STAR 533P CAN-AM ET 57U
 THM 71I PRINCESS PRIME 8695 DLF HYF IEF
 ANL 3N STACKER 10S
 KTCT 33G VICTORIOUS 10R

CE	BW	WW	YW	MM	TM
-2.9	3.6	53.8	85.8	24.6	51.5



Maybelline 62H

Maybelline is nothing short of sensational. We knew she was good before she even stood up. So attractive, she put the makeup on in all the right places. Not only that, she is sound, deep, and fancy! Her dam was the lead off heifer in 2015 when we purchased her from Wanda Wray for \$8,000. She would look good in leather, but she is one of those girls that just can't look bad.

Owned with Haroldson's Polled Herefords.

The hardest decision I had to make regarding this year's sale group. Endure daughter out of the \$22,000 Marvel female we shared with Rea Mahaffey. We have two maternal sisters plus another Endure from the flush so decided to let her go. When you analyze her visually she would be hard to change. Square from behind, chiselled from the front, deep barreled, sound in her structure and very attractive. Born to show but more importantly a good one in the making. We expect great things from this female and reserve a flush at a future date.



Eternity ET 58H

3 **Blair-Athol *Eternity* ET 58H**
Female Applied For DVL 58H Feb. 27, 2020

KCF BENNETT ENCORE Z311 ET DLF HYF IEF
NJW 79Z Z311 ENDURE 173D ET DLF HYF IEF MSUDF MDF NJW 73S M326 TRUST 100W ET DLF HYF IEF
 BW 91H 100W RITA 79Z ET

REMITALL-W START ME UP ET 7B DLF HYF IEF MDF
BLAIR-ATHOL 7B MARVEL 20D DLF HYF IEF MSUDF
 BYEVISTA 138W LASS 38Y

SCHU-LAR ON TARGET 22S
 KCF MISS REVOLUTION X338 ET
 REMITALL RITA 91H

CB 57U CAN DOO 102Y DLF HYF IEF MSUDF
 REMITALL-WEST MARVEL ET 76Y DLF HYF IEF
 MSU TCF REVOLUTION 4R DLF HYF IEF
 BYE-VISTA 18L BOOMER LASS 138W

	CE	BW	WW	YW	MM	TM
PE	-1.1	4.3	67.9	111.9	24.7	58.6

4 **Blair-Athol HBM 223 *Charme* 15H**
Female Applied For DVL 15H Feb. 15, 2020

TH 71U 719T MR HEREFORD 11X DLF HYF IEF
RU BA 11X EXCALIBER 223F DLF HYF IEF MSUDF
 RU BA 27A MO-MOOLA 233C

REMITALL-W 50 SHADES ET 12C DLF HYF IEF MSUDF
BLAIR-ATHOL 50 CHARISMA 119E
 GHC MISS DEW ET 13Y DLF HYF IEF MSUDF

TH 122 71I VICTOR 719T DLF HYF IEF MDF
 TH 7N 45P RITA 71U DLF HYF IEF
 WLB WINCHESTER POWERBALL 27A DLF HYF IEF
 RU BA HOT ROSIE 227X

BOYD BANKER 0015 ET
 REMITALL MARVEL 78T DLF HYF IEF
 GHC VOLUME III ET 139S
 GHC MISS NANCY 98P DLF HYF IEF

	CE	BW	WW	YW	MM	TM
PE	-1.6	4.9	65.2	94.2	27.9	60.5

One of the most exciting things at Blair-Athol this year has been the great set of calves sired by Excaliber. Manns Polled Herefords purchased half interest in Excaliber in our 2019 bull sale. His calves are all the same; short marked, dark coloured, with growth and style. Charme 15H is red to the ground, pigmented and very pretty. Harvey and Beth McKay purchased 119E for \$8,500 in 2017. This heifer calf will show and go on to make a great cow. Her grand dam, 13Y, is a donor and the dam of herd sire, Make My Day.

Owned with Harvey and Beth McKay



Charme 15H

Blair-Athol Farms



Dreams 72H

5 Blair-Athol *Dreams* 72H

Female PC03072183 DVL 72H Mar. 6, 2020

BOYD BANKER 0015 ET
 REMITALL-W 50 SHADES ET 12C DLF HYF IEF MSUDF
 REMITALL MARVEL 78T DLF HYF IEF

MSU TCF REVOLUTION 4R DLF HYF IEF
 SSF P606 MS VICTOR 803
 REMITALL PATRIOT ET 13P
 REMITALL MAVREL 105N

NJW 73S W18 HOMETOWN 10Y ET DLF HYF IEF MDC
 BLAIR-ATHOL HOME BABY 31B DLF HYF IEF
 BLAIR-ATHOL 101 ADA 16W

SHF WONDER M326 W18 ET DLF HYF IEF MDC
 NJW P606 72N DAYDREAM 73S DLF HYF IEF
 BLAIR-ATHOL 13K MAJOR 101N DLF HYF IEF
 MEADOW-ACRES 62P ADA 40T

CE	BW	WW	YW	MM	TM
-1.2	3.3	58.2	95.9	29.1	58.2

50 Shades out of 31B. 31B is nearly ideal in type and kind. Wide topped, deep bodied, clean fronted with a near ideal udder. 50 Dreams looks just like her. Another show heifer in the making!



Miss Lambeau 7H

6 Blair-Athol *Miss Lambeau* 7H

Female PC03072071 DVL 7H Jan. 31, 2020

TH 22R 16S LAMBEAU 17Y
 WCC 17Y MR LAMBEAU 1337C DLF HYF IEF MSUDF
 WCC 362T TAYLOR 1337A

TH 121L 63N TUNDRA 16S
 TH 62N 3L KELSEY 22R
 SQUARE-D TUSCON 362T
 SQUARE-D NADIA 5037R

DTHF CAPONE 114C DLF HYF IEF MSUDF
 DTHF FRAN 117F
 DTHF BRENDA 117B

HAROLDSONS DENSITY T100 34A DLF HYF IEF
 DTHF TATUM 240Z
 GLENLEES DBK 9W STACKER 2Z DLF HYF IEF
 ROSELAWN SYDNEY 7X 80Z

CE	BW	WW	YW	MM	TM
1.6	2.7	51.9	83.9	26.9	52.9

Miss Lambeau 7H purchased in dam from Doug Troop. Miss Lambeau has some extra length. Looks like she will take after her mom.



Ellie 74H

7 Blair-Athol *GMPH* 30D *Ellie* 74H

Female PC03073820 DVL 74H Mar. 7, 2020

REMITALL-W START ME UP ET 7B DLF HYF IEF MDC
 BLAIR-ATHOL 7B MAKE MY DAY 30D DLF HYF IEF MSUDF
 GHC MISS DEW ET 13Y DLF HYF IEF MSUDF

CB 57U CAN DOO 102Y DLF HYF IEF MSUDF
 REMITALL-WEST MARVEL ET 76Y DLF HYF IEF
 GHC VOLUME III ET 139S
 GHC MISS NANCY 98P DLF HYF IEF

ANLC HART100 TAHOE 86 ET 23B DLF HYF IEF MSUDF MDC
 BAR-RZ 23B ELLIE 17E DLF HYF IEF
 BAR-RZ 192S WENDY 83W

SHF TAHOE R117 T100 DLF HYF IEF MSUDF
 ANL 7N MAPLE 86R DLF HYF IEF
 GLENLEES 36N SYNTEC 192S DLF HYF IEF
 BAR-RZ 32J REBECCA 36R

CE	BW	WW	YW	MM	TM
-1.3	5.1	56.0	90.9	21.5	49.5

Fancy, red eyed, Make My Day daughter out of a big framed, nice uddered Bar RZ three year old. 74H has enough muscle and style to show.

Owned with Randy Hall

Jackson's heifer calf has been at the top of the order all year. Tremendous growth, tremendous volume, red eyed, dark coloured and showy. We know she will milk! Super prospect for next year's shows!



Winona 21H

8 Blair-Athol DJ 223F *Winona 21H*
Female PC03072171 DVLJ 21H Feb. 14, 2020

TH 71U 719T MR HEREFORD 11X DLF HYF IEF
RU BA 11X EXCALIBER 223F DLF HYF IEF MSUDF
RU BA 27A MO-MOOLA 233C

GHR YES 49S 1Y DLF HYF IEF
GHR YES 1Y 5C
GHR VOLUME IV 178U

TH 122 71I VICTOR 719T DLF HYF IEF MDF
TH 7N 45P RITA 71U DLF HYF IEF
WLB WINCHESTER POWERBALL 27A DLF HYF IEF
RU BA HOT ROSIE 227X
MCCOY 55M ABSOLUTE 49S DLF HYF IEF
GHR SEBASTIAN 3S 26W
GHC VOLUME IV ET 150S
GHR NANCY 54L 11N

CE	BW	WW	YW	MM	TM
1.5	2.8	56.7	86.4	26.7	55.1

9 Blair-Athol 43C *Crystal 130H*
Female PC03072354 DVL 130H Apr. 6, 2020

TH 512X 719T PLAYMAKER 14Z MDF
REMITALL-W BNC ACE 43C DLF HYF IEF MSUDF
REMITALL-WEST MARVEL ET 5Z DLF HYF IEF

TH 122 71I VICTOR 719T DLF HYF IEF MDF
OLTN 719T CRYSTAL 10B DLF HYF IEF MSUDF
OLTN 10L CRYSTAL 47U

TH 122 71I VICTOR 719T DLF HYF IEF MDF
TH 122 71I DOMINETTE 512X ET
SHF WONDER M326 W18 ET DLF HYF IEF MDC
REMITALL MARVEL 78T DLF HYF IEF
DRF JWR PRINCE VICTOR 71I
KBRCR 19D DOMINETTE 122 DLF IEF
OLTN 236G NICK 10L
OLTN 7115J CRYSTAL 7K

CE	BW	WW	YW	MM	TM
2.1	2.3	59.0	95.8	27.2	56.7

This line bred 719T is a great prospect for an April show heifer. Really stout, yet feminine and broody. Dam is a hard working, easy fleshing cow that we purchased from the Oultons in Nova Scotia.



Crystal 130H

Blair-Athol Farms



Applause 122G

10

Blair-Athol 124E *Applause 122G*
Female PC03061876 DVL 122G Mar. 24, 2019

CE	BW	WW	YW	MM	TM
-2.0	4.9	67.6	107.4	31.0	64.8

MCCOY 70Y SKYFALL 53A DLF HYF IEF
 MCCOY 53A PATENT 124E DLF HYF IEF
 MCCOY 719T SUSIE ET 417B DLF HYF IEF
 JDH 117R EQUITY 70Y ET DLF HYF IEF
 MCCOY 25M ALISON 64W DLF HYF IEF MSUDF
 TH 122 71I VICTOR 719T DLF HYF IEF MDF
 MCCOY 58G SUSIE 33K
 NJW 67U 28M BIG MAX 22Z HYF
 NJW P606 72N DAYDREAM 73S DLF HYF IEF
BLAIR-ATHOL 97B CHICKADEE 131D
 BCD 323 POLLED WREN 242Z
 REMITALL SHATNER 323S
 BCD 345S WREN 988W

Applause 122G was named that for good reason. Right from the start we knew this heifer would hear a lot of applause in her show career. COVID changed that some, but she still managed some online shows, and those shows all resulted in wins. Applause was:

- Champion Hereford Female in the Spring Fling Virtual Show
- Reserve All Breeds Female in the Manitoba Winter Fair Virtual Show
- Reserve Champion Female in the National Junior Hereford Bonanza Virtual Show

This heifer is the kind we have been working towards our entire lives. Each and every day we like her more. She's perfect from the profile and sound and soft as anything when she gets in motion. Her dam, 131D, was a successful show heifer for Christin in 2017, and has become a donor for us this spring. Granddam, 242Z, has consistently been one of our best.

We feel this heifer's best days are still ahead of her and as a result have decided to only offer a half interest in her. The successful bidder will be responsible for half of the maintenance costs of 122G, but will also reap half the rewards on this great investment.

As Michael Jordan once said, "In any investment, you expect to have fun and make money." We look forward to having some fun with this one!

AI bred to NJW 103Y 174X Diablo 156C ET on May 6, 2020. Due to calve February 15, 2021.

Selling half interest, no possession.



Applause 122G



Chickadee 131D

11 Blair-Athol CD 27C *Leaha* 149G

Female PC03059423 DVLC 149G Apr. 12, 2019

NJW 76S P20 BEEF 38W ET
 NJW 73S 38W RIMROCK 27C ET^{MDF}
 NJW P606 72N DAYDREAM 73S^{DLF HYF IEF}

BLAIR-ATHOL CLASSIC 53U
 JAC LEADA 23Y
 JAC LEADA 13W

SHF PROGRESS P20
 NJW 55N STARDUST 76S
 PW VICTOR BOOMER P606^{MDF}
 NJW 94J DEW 72N^{DLF HYF IEF}
 MHCVB 68M PROWLER 118P
 RU 65F KIMBERLY 31K^{DLF HYF IEF}
 BLAIR-ATHOL 65F ON LINE 13K
 RU 8G LEADA 64L

CE	BW	WW	YW	MM	TM
1.5	3.0	52.4	80.3	25.3	51.5

Christin's heifer and one of our favourites. The 23Y cow has a good one year after year. Rimrock on Classic has been a great mating!

Exposed to Blair Athol 10Y Homerun 24C from May 11 to August 16, 2020. Preg check indicates she will calve late February to early March.



Leaha 149G

12 Blair-Athol 156C *Pepsi* 11G

Female PC03060289 DVL 11G Feb. 13, 2019

NJW 76S 4037 DURANGO SPIRIT 174X^{DLF HYF IEF}
 NJW 103Y 174X DIABLO 156C ET
 NJW 101U 100W SPIRITQUEEN 103Y

REMITALL HEATER 161U^{DLF HYF IEF}
 BLAIR-ATHOL 161U SIZZLE 78E
 BLAIR-ATHOL HOME BABY 31B^{DLF HYF IEF}

THM DURANGO 4037^{DLF HYF IEF}
 NJW 55N STARDUST 76S
 NJW 73S M326 TRUST 100W ET^{DLF HYF IEF}
 NJW 4037 55N FREE SPIRIT 101U
 BNMHPH 13P HEAT 101S^{DLF HYF IEF MDF}
 RU 2M DEBRA 141P
 NJW 73S W18 HOMETOWN 10Y ET^{DLF HYF IEF MDC}
 BLAIR-ATHOL 101 ADA 16W

CE	BW	WW	YW	MM	TM
6.3	1.2	49.8	81.3	27.4	52.3

These Diablo daughters are some of the best we have ever calved. Pepsi 11G will be no exception. Dam, 78E, has a great future here. Don't miss this female. Not the biggest but she will return her investment in spades.

Bred to NJW 73S 28W Rimrock 27C ET on May 8, 2020. Due to calve February 16, 2021.



Pepsi 11G

13 Blair-Athol 124E *Bree* 151G

Female PC03059409 DVL 151G Apr. 13, 2019

MCCOY 70Y SKYFALL 53A^{DLF HYF IEF}
 MCCOY 53A PATENT 124E^{DLF HYF IEF}
 MCCOY 719T SUSIE ET 417B^{DLF HYF IEF}

BLAIR-ATHOL PURE LUCK 61S
 DS PURE RONDA 10X
 CS GPR RONDA 30S

JDH 117R EQUITY 70Y ET^{DLF HYF IEF}
 MCCOY 25M ALISON 64W^{DLF HYF IEF MSUDF}
 TH 122 711 VICTOR 719T^{DLF HYF IEF MDF}
 MCCOY 58G SUSIE 33K
 MHCVB 68M PROWLER 118P
 BLAIR-ATHOL 20X BETTE 926K
 GRANDVIEW SOP RIBEYE 276
 CS GV MISS FLAG 12P ET

CE	BW	WW	YW	MM	TM
-2.6	5.3	61.5	104.2	23.4	54.2

The last daughter out of 10X from Stockdales in Pennsylvania. We have three maternal sisters so are able to let her go. This young heifer fits right in with the rest and we feel the Patent daughters will make excellent cows.

Bred to Mohican Lux 68D on May 3, 2020. Exposed to Mohican Lux 68D from May 21 to August 15, 2020. Preg check indicates an early March calf.



Bree 151G

Blair-Athol Farms



Janice 155G

Janice 155G is one of two Trojan 20E daughters in this year's sale. Trojan was purchased by Wascana Cattle Co. as a two year old for \$10,000. I believe upon evaluation of these two heifers he would have made a huge impact. 155G is clean in her lines and carries herself with style and grace. Her dam is a super young Zach daughter. Her first daughter sold to Victoria Austin in Ontario.

Exposed to NJW 103 174X Diablo 156C ET from May 21 to August 15, 2020. Projected calving date is mid-March.

Owned with Ken Wray

14 Blair-Athol TT *Janice* 155G

Female PC03065019 DVL 155G Apr. 19, 2019

NJW 73S 22Z MIGHTY MAX 97B ET DLF HYF IEF NJW 67U 28M BIG MAX 22Z HYF
 BLAIR-ATHOL 97B TROJAN 20E DLF HYF IEF NJW P606 72N DAYDREAM 73S DLF HYF IEF
 BLAIR-ATHOL 131 JANET 99Z BLAIR-ATHOL 6 SOLID 131T
 RU 65F LASALLE 37L
 TH 122 71I VICTOR 719T DLF HYF IEF MDF
 BBSF 719T ZACH 60Z DLF HYF IEF BBSF 52U FAWN 22X DLF HYF IEF
 BLAIR-ATHOL 60 ZELDA 100D BLAIR-ATHOL BOND DIRECT 103P
 BLAIR-ATHOL 103 DIANE 33U BLAIR-ATHOL 122L DEE 13R

CE	BW	WW	YW	MM	TM
3.8	2.9	56.8	87.9	29.4	57.8

15 Blair-Athol 20E *Sue* 162G

Female PC03065022 DVL 162G Apr. 28, 2019

NJW 73S 22Z MIGHTY MAX 97B ET DLF HYF IEF NJW 67U 28M BIG MAX 22Z HYF
 BLAIR-ATHOL 97B TROJAN 20E DLF HYF IEF NJW P606 72N DAYDREAM 73S DLF HYF IEF
 BLAIR-ATHOL 131 JANET 99Z BLAIR-ATHOL 6 SOLID 131T
 RU 65F LASALLE 37L
 SHF WONDER M326 W18 ET DLF HYF IEF MDC
 NJW 73S W18 HOMEGROWN 8Y ET DLF HYF IEF MDC NJW P606 72N DAYDREAM 73S DLF HYF IEF
 GOLDEN-OAK 8Y SARAH 4D GOLDEN-OAK OUTCROSS 18U DLF HYF IEF
 GOLDEN-OAK 18U SARAH 39U 1B BAR-H SARA 39U DLF HYF IEF

CE	BW	WW	YW	MM	TM
6.0	2.3	53.6	83.7	31.9	58.7



Sue 162G

Not our biggest heifer but she might be the best of the bunch. Late April twin, her mom had to feed them both. We sold her full sister this spring privately to Don Lees. This female is as square as they come; big barreled, sweet fronted and just flat out good!

Exposed to Mohican Lux 68D from May 21 to August 15, 2020. Preg check indicates early to mid-March calf.

Real pretty red eyed Warrior. Big barreled and thick.

Exposed to Mohican Lux 68D from May 21 to August 15, 2020. Due to calve early March 2021.



Lassie 79G

16 Blair-Athol 845C *Lassie 79G*

Female PC03062243 DVL 79G Mar. 8, 2019

UPH PROSPECTOR P152
WHITEHAWK WARRIOR 845C ET
 GRANDVIEW CMR 4003 BETH Y115ET

H BK CCC SR GAME CHANGER ET
ROSELAWN JAYCEE GC ET 2D DLF HYF IEF MSUDF
 ROSELAWN PIPER 154U 113X DLF HYF IEF

HUTH PROSPECTOR K085
 UPH MANDY M863
 GRANDVIEW VIC H132 23G 4003 ET
 DJB 46B BETH 1L

KJ HVH 33N REDEEM 485T ET DLF HYF IEF
 NJW 78P 63N LADYSPORT 51W ET
 HARVIE OVHF WALK HARD 154U DLF HYF IEF
 ROSELAWN VICTORIA 7H 85M

CE	BW	WW	YW	MM	TM
2.3	2.2	56.5	89.9	31.6	59.9

17 Blair-Athol 27C *Celeste 67G*

Female PC03062190 DVL 67G Mar. 4, 2019

NJW 76S P20 BEEF 38W ET
NJW 73S 38W RIMROCK 27C ET MDF
 NJW P606 72N DAYDREAM 73S DLF HYF IEF

BLAIR-ATHOL 10Y HOMERUN 24C DLF HYF IEF MSUDF
BLAIR-ATHOL 24C CONNIE 63E
 JAC CONNIE ET 3X DLF HYF IEF

SHF PROGRESS P20
 NJW 55N STARDUST 76S
 PW VICTOR BOOMER P606 MDF
 NJW 94J DEW 72N DLF HYF IEF

NJW 73S W18 HOMETOWN 10Y ET DLF HYF IEF MDC
 HAROLDSON'S WLC68M KATRINA 33P DLF HYF IEF
 PW VICTOR BOOMER P606 MDF
 SHORTY-CROFT CONNIE 20M DLF HYF IEF

CE	BW	WW	YW	MM	TM
3.4	2.1	53.5	75.0	30.9	57.7

A chance to get a Rimrock out of the Connie family. Squarely made and broody. A can't miss cow prospect!

Bred to Mohican Lux 68D on May 10, 2020. Due to calve February 18, 2021.



Celeste 67G

Blair-Athol Farms



Cinderella 20G

Kylee's heifer and one of the best in the sale. Big and roomy. Diablo "daddy" ensures the milk, the dam, 11B, was Reserve Grand Champion Female at Bonanza 2015 in New Brunswick.

Exposed to Blair Athol 10Y Homerun 24C from May 11 to August 16, 2020. Preg check indicates February 2021 calving date.

18 **Blair-Athol KD Cinderella 20G**
Female PC03059471 DVLK 20G Feb. 17, 2019

NJW 76S 4037 DURANGO SPIRIT 174X^{DLF HYF IEF} THM DURANGO 4037^{DLF HYF IEF}
 NJW 103Y 174X DIABLO 156C ET^{DLF HYF IEF} NJW 55N STARDUST 76S
 NJW 101U 100W SPIRITQUEEN103Y^{DLF HYF IEF} NJW 73S M326 TRUST 100W ET^{DLF HYF IEF}
 NJW 4037 55N FREE SPIRIT 101U^{DLF HYF IEF}
 HAROLDSON'S WLL ANCHOR 4T^{DLF HYF IEF} REMITALL GOVERNOR 236G
 OLTN 4T BELLE OF THE BALL 11B^{DLF HYF IEF} HAROLDSON'S 37H MIRA ET 62K
 OLTN 5L WHISKEY GIRL 9W^{DLF HYF IEF} STAR OBF BOGART 5L
 OLTN 66K NEVADA 7N^{DLF HYF IEF}

CE	BW	WW	YW	MM	TM
0.4	3.2	52.6	83.0	25.8	52.1

19 **Blair-Athol 30 Destiny 102G**
Female PC03059434 DVL 102G Mar. 16, 2019

REMITALL-W START ME UP ET 7B^{DLF HYF IEF MDF} CB 57U CAN DOO 102Y^{DLF HYF IEF MSUDF}
 BLAIR-ATHOL 7B MAKE MY DAY 30D^{DLF HYF IEF MSUDF} REMITALL-WEST MARVELET 76Y^{DLF HYF IEF}
 GHC MISS DEW ET 13Y^{DLF HYF IEF MSUDF} GHC VOLUME III ET 139S
 BLAIR-ATHOL CLASSIC 53U^{DLF HYF IEF} MHCVB 68M PROWLER 118P
 BLAIR-ATHOL CLASSY GRACE 97Y^{DLF HYF IEF} RU 65F KIMBERLY 31K^{DLF HYF IEF}
 BLAIR-ATHOL 25C AMIGA 20K^{DLF HYF IEF} NJW Z17 VAQUERO 25C
 BLAIR-ATHOL LADY GRACE 14F^{DLF HYF IEF}

CE	BW	WW	YW	MM	TM
-7.0	6.3	63.9	104.2	26.5	58.5



Destiny 102G

Big and bold. Powerful female from any angle. This red eyed girl will make you stop for a second look. Dam is a maternal sister to the great breeding Major 101N. 97Y is also the mother of Homefront 99C, herd sire at Bathos and Rimkes.

Bred to BEHM 100W Cuda 504C on May 9, 2020. Projected calving date is February 17, 2021.

20

Blair-Athol 957B *Melania* 132G

Female PC03064358 DVL 132G Mar. 29, 2019

NJW 73S W18 HOMEGROWN 8Y ET DLF HYF IEF MDC SHF WONDER M326 W18 ET DLF HYF IEF MDC
 NJW P606 72N DAYDREAM 73S DLF HYF IEF
SQUARE-D CENTURY 957B DLF HYF IEF MSUDF MDF SADDLE-VALLEY 203E HAMM 822H
 SQUARE-D JAEDEN 257P DLF HYF IEF SQUARE-D AMANDA 975K DLF HYF IEF
 NJW 73S 22Z MIGHTY MAX 69B ET NJW 67U 28M BIG MAX 22Z HYF
SQUARE-D MADONNA 81E NJW P606 72N DAYDREAM 73S DLF HYF IEF
 MCCOY 31Y ZENA 81A TH 6M 755T PINNACLE 31Y DLF HYF IEF
 MCCOY 264P ZENA 49W

CE	BW	WW	YW	MM	TM
8.6	1.3	62.0	96.2	34.2	65.2

Super Century daughter purchased in dam from Square D. Lots of growth, length and femininity in this girl. One we should be keeping, but our loss will be your gain. EPD profile is off the charts!

Bred to NJW 103Y 174X Diablo 156C ET on May 13, 2020. Due to calve February 21, 2021.



Melania 132G

21

RU BA *Hometown Girl* 307G

Female PC03063636 EKD 307G Mar. 18, 2019

NJW 73S W18 HOMETOWN 10Y ET DLF HYF IEF MDC SHF WONDER M326 W18 ET DLF HYF IEF MDC
 NJW P606 72N DAYDREAM 73S DLF HYF IEF
BLAIR-ATHOL 10Y BLITZ 43D DLF HYF IEF MSUDF SQUARE-D REPORT 593R
 SQUARE-D LASSIE 615X DLF HYF IEF SQUARE-D SELINE 6105S
 TH 6M 755T PINNACLE 31Y DLF HYF IEF
 MCCOY 31Y KINGDOM 30A DLF HYF IEF MSUDF MCCOY 58G TRISHA 8U DLF HYF IEF MSUDF
MCCOY 30A SUSIE 153D BBSF 68R ULTIMATE 23U DLF HYF IEF
 MCCOY 23U SUSIE 167A MCCOY 36A SUSIE 75F DLF HYF IEF

CE	BW	WW	YW	MM	TM
2.5	2.8	46.5	81.2	21.3	44.6

Very attractive, nicely made daughter of Blitz 43D. Bob purchased the Blitz bull for \$9,500 in our 2018 bull sale. Maternal sister working for Cochranes in Moose Jaw.

Bred to Mohican Lux 68D on May 9, 2020. Exposed to Mohican Lux 68D from May 21 to August 15, 2020. Due to calve in February.

Owned with Robert Bestrop



Hometown Girl 307G

22

Blair-Athol 27C *Delihla* 87G

Female PC03061617 DVL 87G Mar. 11, 2019

NJW 76S P20 BEEF 38W ET SHF PROGRESS P20
 NJW 55N STARDUST 76S
NJW 73S 38W RIMROCK 27C ET MDF PW VICTOR BOOMER P606 MDF
 NJW P606 72N DAYDREAM 73S DLF HYF IEF NJW 94J DEW 72N DLF HYF IEF
 MCCOY 55M ABSOLUTE 49S DLF HYF IEF
 GHR YES 49S 1Y DLF HYF IEF GHR SEBASTIAN 3S 26W
GHR YES 1Y 3C GHC VOLUME IV ET 150S
 GHR VOLUME IV 178U GHR NANCY 54L 11N

CE	BW	WW	YW	MM	TM
2.6	1.5	53.2	80.6	30.1	56.7

Third great female out of Guilford 3C. Others have sold to Travis Landels and Elm Lodge. Delihla 87G is deep bodied with shape and broodiness. NJW bought Rimrock back this spring where he will leave an even bigger footprint.

Bred to NJW 103Y 34X Diablo 156C ET on April 24, 2020. Due to calve February 2, 2021.



Delihla 87G

Blair-Athol Farms



Mona Lisa 81G

23 Blair-Athol 27C *Mona Lisa* 81G

Female PC03061619 DVL 81G Mar. 8, 2019

NJW 76S P20 BEEF 38W ET
 NJW 73S 38W RIMROCK 27C ET^{MDF}
 NJW P606 72N DAYDREAM 73S^{DLF HYF IEF}

SHF PROGRESS P20
 NJW 55N STARDUST 76S
 PW VICTOR BOOMER P606^{MDF}
 NJW 94J DEW 72N^{DLF HYF IEF}

BOYD MASTERPIECE 0220
 BLAIR-ATHOL 0220 SECRET 162B
 NBG 4R VICTORIA 22W 2A

SHF RIB EYE M326 R117^{DLF HYF IEF}
 SSF P606 MS VICTOR 803
 MSU TCF REVOLUTION 4R^{DLF HYF IEF}
 MEADOW-ACRES RL ADA ET 22W

CE	BW	WW	YW	MM	TM
-5.1	4.3	60.3	96.5	30.5	60.7

Big, powerful Rimrock daughter. Some great female producers in her pedigree. Revolution, Rib Eye, P606 and Beef 38W. Not much to say, the homework has been done and the rest is up to you.

Bred to NJW 76S Spirit 190G ET on May 30, 2020. Projected calving date is March 10, 2021.



Ally 152G

24 Blair-Athol 124E *Ally* 152G

Female PC03059400 DVL 152G Apr. 15, 2019

MCCOY 70Y SKYFALL 53A^{DLF HYF IEF}
 MCCOY 53A PATENT 124E^{DLF HYF IEF}
 MCCOY 719T SUSIE ET 417B^{DLF HYF IEF}

JDH 117R EQUITY 70Y ET^{DLF HYF IEF}
 MCCOY 25M MALISON 64W^{DLF HYF IEF MSUDF}
 TH 122 71I VICTOR 719T^{DLF HYF IEF MDF}
 MCCOY 58G SUSIE 33K

PW MOHICAN NASDAQ P316
 BLAIR-ATHOL NASDAQ DEB ET 35W^{DLF HYF IEF}
 RU 8G LAST 41L

REMITALL BOOMER 46B
 PW VICTORIA 964 8114
 GERBER GUNNER 8G
 RU 20X FANTASY 41F

CE	BW	WW	YW	MM	TM
5.4	2.3	54.3	86.0	23.8	51.0

This is a classy, red eyed, Patent daughter. Her donor dam, 35W, has had some great ones, including the \$15,000 donor, Debbie Doo, purchased by Matt Lohner and Kris Gordon. This is definitely one we should be keeping and you should be buying!

Exposed to Blair Athol 10Y Homerun 24C from May 11 to August 16, 2020. Expected calving date is late February to early March.



Rawa 123G

25 Blair-Athol 124E *Rawa* 123G

Female PC03063641 DVL 123G Mar. 25, 2019

MCCOY 70Y SKYFALL 53A^{DLF HYF IEF}
 MCCOY 53A PATENT 124E^{DLF HYF IEF}
 MCCOY 719T SUSIE ET 417B^{DLF HYF IEF}

JDH 117R EQUITY 70Y ET^{DLF HYF IEF}
 MCCOY 25M MALISON 64W^{DLF HYF IEF MSUDF}
 TH 122 71I VICTOR 719T^{DLF HYF IEF MDF}
 MCCOY 58G SUSIE 33K

TH 89T 755T STOCKMAN 475Z
 BLAIR-ATHOL 475 STOCKMAID 107C
 BLAIR-ATHOL 13K MAVIS 115U

TH 223 71I VICTOR 755T^{DLF HYF IEF}
 TH 16G 20N GEMINI 89T^{DLF HYF IEF}
 BLAIR-ATHOL 65F ON LINE 13K
 BLAIR-ATHOL 122L MAVIS 61R

CE	BW	WW	YW	MM	TM
-4.9	6.1	67.3	117.7	22.6	56.3

Another powerful, broody cow prospect. Her sire, Patent, has done a super job here at Blair-Athol. This is the first calf crop and they sure found their way to the top. Brooks Farms have one out of this family that is doing a great job!

Exposed to NJW 103Y 174X Diablo 156C ET from May 21 to August 15, 2020. Due to calve in March.

26

Blair-Athol 43C *Natalie* 144G

Female PC03064364 DVL 144G Apr. 6, 2019

TH 512X 719T PLAYMAKER 14Z MDF
 REMITALL-W BNC ACE 43C DLF HYF IEF MSUDF
 REMITALL-WEST MARVEL ET 5Z DLF HYF IEF

DTHF VOLUME 253Y DLF HYF IEF
 KTCT 253 NATALIE 25B
 KTCT 33S DONNA 17Y

TH 122 71I VICTOR 719T DLF HYF IEF MDF
 TH 122 71I DOMINETTE 512X ET
 SHF WONDER M326 W18 ET DLF HYF IEF MDC
 REMITALL MARVEL 78T DLF HYF IEF
 GHC VOLUME IV ET 150S
 DTHF PEPPERMINT 176P
 MAR 236G SPIKE 33S
 KTCT 5N DONNA 42R

CE	BW	WW	YW	MM	TM
-2.5	3.8	57.6	94.1	24.7	53.5

The only Ace bred to sell this year. Dam is a hard working, big volume cow purchased from Keith Troop. Ace daughters are as good as any! Bonus is her Rimrock service!

Bred to NJW 73S 38W Rimrock 27C ET on May 25, 2020. Due date is March 5, 2021.



Natalie 144G

27

Blair-Athol 30 *Dahlia* 146G

Female PC03064367 DVL 146G Apr. 10, 2019

REMITALL-W START ME UP ET 7B DLF HYF IEF MDF
 BLAIR-ATHOL 7B MAKE MY DAY 30D DLF HYF IEF MSUDF
 GHC MISS DEW ET 13Y DLF HYF IEF MSUDF

BBSF 719T ZACH 60Z DLF HYF IEF
 BLAIR-ATHOL 60Z SASHA 48C
 BLAIR-ATHOL 20X TAYLOR ET 53Y DLF HYF IEF

CB 57U CAN DOO 102Y DLF HYF IEF MSUDF
 REMITALL-WEST MARVEL ET 76Y DLF HYF IEF
 GHC VOLUME III ET 139S
 GHC MISS NANCY 98P DLF HYF IEF
 TH 122 71I VICTOR 719T DLF HYF IEF MDF
 BBSF 52U FAWN 22X DLF HYF IEF
 REMITALL KEYNOTE 20X
 LAKEFORD FAITHFUL 882P DLF HYF IEF

CE	BW	WW	YW	MM	TM
-3.1	5.9	56.6	90.9	23.9	52.2

Another Make My Day, out of a Zach, out of a Keynote. Reads pretty good, looks pretty good. She will get the job done.

Exposed to NJW 103Y 174X Diablo 156C ET from May 21 to August 15, 2020. Preg check indicates April calf.



Dahlia 146G

28

Blair-Athol GMPH 652D *Silk* 33G

Female PC03068271 DVL 33G Feb. 21, 2019

R LEADER 6964
 MCM 6964 BOLT 652D
 MCM 028X MARLIE 413B

GLENLEES 27A POWER-UP 50C DLF HYF IEF
 BBSF 50C RACQUELLE 110E
 BBSF 100W RACQUELLE 78A

HYALITE ON TARGET 936
 R MISS REVOLUTION 1009
 CHURCHILL SENSATION 028X DLF HYF IEF
 MCM MARLIE TIME 211Z
 WLB WINCHESTER POWERBALL 27A DLF HYF IEF
 GLENLEES 28M PEARL 62Y
 NJW 73S M326 TRUST 100W ET DLF HYF IEF
 BBSF 52U RACQUELLE 65Y

CE	BW	WW	YW	MM	TM
14.8	-0.2	65.7	100.6	34.8	67.7

One of the first Bolt daughters to sell In Canada. Fancy, red eyed heifer. Check her EPDs! They are scary good!

Bred to Mohican Lux 68D on April 30, 2020. Exposed to Mohican Lux 68D from May 21 to August 15, 2020. Preg check indicated February 10, 2021 due date.

Owned with Randy Hall



Silk 33G

Blair-Athol Farms



Sparrow 42G

29 Female **PC03059464** **DVL 42G** **Feb. 25, 2019**

UPH PROSPECTOR P152
WHITEHAWK WARRIOR 845C ET
 GRANDVIEW CMR 4003 BETH Y115ET

SQUARE-D PLAINSMAN 946Y DLF HYF IEF
BLAIR-ATHOL PLAIN KISS ET 60A DLF HYF IEF
 BLAIR-ATHOL 13 KISSES 17T DLF HYF IEF

Blair-Athol 845C Sparrow 42G
 HUTH PROSPECTOR K085
 UPH MANDY M863
 GRANDVIEW VIC H132 23G 4003 ET
 DJB 46B BETH 1L
 SQUARE-D RANCHMAN 257R DLF HYF IEF
 SQUARE-D JAEDEN 846U DLF HYF IEF
 BLAIR-ATHOL 65F ON LINE 13K
 BLAIR-ATHOL 36F KISSES 112P

CE	BW	WW	YW	MM	TM
-3.0	4.2	63.9	102.7	25.9	57.9

Big framed, dark coloured Warrior daughter. Granddam, Kisses 17T, was a donor dam. The Warriors are growthy with milk. Good cow family to be involved with!

Bred to our newest herd sire, NJW 76S Spirit 190G ET on May 9, 2020. Due to calve February 17, 2021.



Abby 171F

30 Female **PC03054673** **DVL 171F** **Nov. 16, 2018**

SQUARE-D RANCHMAN 257R DLF HYF IEF
SQUARE-D PLAINSMAN 946Y DLF HYF IEF
 SQUARE-D JAEDEN 846U DLF HYF IEF

BLAIR-ATHOL 20X JAZZ ET 26Y DLF HYF IEF
BLAIR-ATHOL JAZZY GAL 127C
 BLAIR-ATHOL 80P CENTERFOLD 42U

Blair-Athol 946 Abby 171F
 SQUARE-D STINGER 779K
 SQUARE-D AMANDA 975K DLF HYF IEF
 SADDLE-VALLEY 203E HAMM 822H
 NCX MERAIDIE 469M
 REMITALL KEYNOTE 20X
 LAKEFORD FAITHFUL 882P DLF HYF IEF
 LAGRAN RELOAD 80P ET DLF HYF IEF
 WILGOR 47K DANCETTE 37H 41N

CE	BW	WW	YW	MM	TM
-8.7	7.4	62.9	106.3	18.4	49.9

Big, strong, Plainsman daughter, granddaughter of the great Centerfold 42U owned by Abby Hill. Plainsman daughters make very good cows with flawless udders. This may be your last chance to buy a Plainsman daughter.

Exposed to Mohican Lux 68D from May 21 to August 15, 2020. Preg check indicates early to mid April calf.



Amber 5G

31 Female **PC03060246** **DVL 5G** **Feb. 7, 2019**

REMITALL-W START ME UP ET 7B DLF HYF IEF MDF
BLAIR-ATHOL 7B MAKE MY DAY 30D DLF HYF IEF MSUDF
 GHC MISS DEW ET 13Y DLF HYF IEF MSUDF

RVP 100W BUZZ 17Z DLF HYF IEF
RAWCLIFFE 17Z BELLE 60D
 RAWCLIFFE 9M BELLE 60R

Blair-Athol 30D Amber 5G
 CB 57U CAN DOO 102Y DLF HYF IEF MSUDF
 REMITALL-WEST MARVEL ET 76Y DLF HYF IEF
 GHC VOLUME III ET 139S
 GHC MISS NANCY 98P DLF HYF IEF
 NJW 73S M326 TRUST 100W ET DLF HYF IEF
 STAR JJB JILLIAN 98U ET
 ROSELAWN MDG WALKER 14K 9M
 RAWCLIFFE 46G AMBER 6L

CE	BW	WW	YW	MM	TM
-7.1	6.6	58.7	97.4	24.0	53.4

Real solid 30D daughter. He makes them wide based, easy fleshing and cowy looking. Reports on daughters we have sold previously have all been good with super udders and milk flow.

Bred to Mohican Lux 68D on May 11, 2020. Pasture exposed to Mohican Lux 68D from May 21 to August 15, 2020. Projected calving date is February 19, 2021. Owned with Robert Bestrop.

32

Blair-Athol *Erika Kane* 54G

Female PC03060296 DVL 54G Feb. 27, 2019

REMITALL-W START ME UP ET 7B DLF HYF IEF MDF CB 57U CAN DOO 102Y DLF HYF IEF MSUDF
 REMITALL-WEST MARVEL ET 76Y DLF HYF IEF
BLAIR-ATHOL 7B MAKE MY DAY 30D DLF HYF IEF MSUDF TGHC VOLUME III ET 139S
 GHC MISS DEW ET 13Y DLF HYF IEF MSUDF GHC MISS NANCY 98P DLF HYF IEF
 FELTONS LEGEND 242
 MSU TCF REVOLUTION 4R DLF HYF IEF MSU TCF RACHAEL ET 54N DLF HYF IEF
TABOO 4R ERIKA 116E DLF HYF IEF MSUDF MCCOY 55M ABSOLUTE 49S DLF HYF IEF
 LIAN 49S ZELDA 114Z DLF HYF IEF STAR MHPH BRIGHT AMELIA 8T DLF HYF IEF

CE	BW	WW	YW	MM	TM
-3.3	4.4	58.9	92.6	23.1	52.6

A real sweetheart! 54G is very feminine and sound with a beautiful front end. This heifer is extremely quiet. We think a lot of this heifer!

Exposed to NJW 103Y 174X Diablo 156C ET from May 21 to August 15, 2020. Due to calve in early March.



Erika Kane 54G

33

Blair-Athol EB *Miss Lux* 9G

Female PC03061622 DVL 9G Feb. 11, 2019

NJW PMH 66X 156T LUX 206A ET CMR GVP MR MATERNAL 156T DLF HYF IEF MDF
 NJW 78P 4037 LUXURY 66X ET
MOHICAN LUX 68D DLF HYF IEF MSUDF TH 133U 719T UPGRADE 69X DLF HYF IEF
 MOHICAN VICKY Z5 MOHICAN VICKY 25X
 BNMHPH 13P HEAT 101S DLF HYF IEF MDF
 REMITALL HEATER 161U DLF HYF IEF RU 2M DEBRA 141P
BLAIR-ATHOL 161U SHIVER 91E C THE CHIVE ET
 MLL 2061 DIAMOND CHIVETTE 309C MLL 215W DIAMOND 300Z

CE	BW	WW	YW	MM	TM
4.3	2.9	55.3	87.1	29.4	57.1

A Lux daughter with tons of potential. Lux daughters are working out really well. Great udders and sure-fire calving ease! Dam 91E is a maternal sister to our great show female from 2019, 155F.

Exposed to Blair Athol 10Y Homerun 24C from May 11 to August 16, 2020. Preg check indicates a February calf.

Owned with Erinbrook Polled Herefords



Miss Lux 9G

34

Blair-Athol 30D *Trinity* 124G

Female PC03063642 DVL 124G Mar. 25, 2019

REMITALL-W START ME UP ET 7B DLF HYF IEF MDF CB 57U CAN DOO 102Y DLF HYF IEF MSUDF
 REMITALL-WEST MARVEL ET 76Y DLF HYF IEF
BLAIR-ATHOL 7B MAKE MY DAY 30D DLF HYF IEF MSUDF GHC VOLUME III ET 139S
 GHC MISS DEW ET 13Y DLF HYF IEF MSUDF GHC MISS NANCY 98P DLF HYF IEF
 BNMHPH 13P HEAT 101S DLF HYF IEF MDF
 REMITALL HEATER 161U DLF HYF IEF RU 2M DEBRA 141P
BLAIR-ATHOL 161 TRACEY 31C BLAIR-ATHL THE BIG SHOW ET 62P
 MEADOW-ACRES TRACEY 62P 68S MEADOW-ACRES 13K TRACEY 28N

CE	BW	WW	YW	MM	TM
3.1	3.3	50.9	87.1	20.6	46.1

I might label Trinity 124G the 'sleeper.' Her dam, 31C, is fast becoming one of our best cows. Daughters at BNC and River Valley. Trinity 124G is the third plus she is nursing a fabulous Bottom Line heifer calf this year. Read the book and hunt her up. You won't be disappointed!

Exposed to Blair Athol 10Y Homerun 24C from May 11 to August 16, 2020. Due to calve early April.



Trinity 124G

Blair-Athol Farms



Diablo 156C

Ref **NJW 103Y 174X *Diablo* 156C ET**
 Male PC03026212 103Y 156C Feb. 27, 2015

THM DURANGO 4037 DLF HYF IEF CS BOOMER 29F DLF HYF IEF
 NJW 76S 4037 DURANGO SPIRIT 174X DLF HYF IEF THM 7085 VICTRA 9036 DLF HYF IEF
 NJW 55N STARDUST 76S NJW BW TRAILDUST 161L MDF
 NJW 57G SPIRIT QUEEN 55N ET
 KCF BENNETT 3008 M326 DLF HYF IEF MDF
 NJW 73S M326 TRUST 100W ET DLF HYF IEF NJW P606 72N DAYDREAM 73S DLF HYF IEF
 NJW 101U 100W SPIRITQUEEN103Y KJ 2403 RECRUIT 966R
 NJW 4037 55N FREE SPIRIT 101U NJW 57G SPIRIT QUEEN 55N ET

CE	BW	WW	YW	MM	TM
5.6	1.0	45.3	71.2	28.5	51.2



Lux 68D

Ref **MOHICAN *Lux* 68D** DLF HYF IEF MSUDF
 Male PC03037987 MW 68D Feb. 17, 2016

CMR GVP MR MATERNAL 156T DLF HYF IEF MDF PW VICTOR BOOMER P606 MDF
 NJW PMH 66X 156T LUX 206A ET JG WCN VICTRA 17 2103
 NJW 78P 4037 LUXURY 66X ET THM DURANGO 4037 DLF HYF IEF
 NJW BW LADYSPORT DEW 78P ET DLF HYF IEF
 TH 122 71I VICTOR 719T DLF HYF IEF MDF
 TH 14S 103R MEGAN 133U
 MOHICAN VICKY Z5 SHF RIB EYE M326 R117 DLF HYF IEF
 MOHICAN VICKY 25X MOHICAN VICKY 23U

CE	BW	WW	YW	MM	TM
-1.8	3.7	54.0	86.8	34.2	61.2



Homerun 24C

Ref **Blair-Athol 10Y *Homerun* 24C** DLF HYF IEF MSUDF
 Male PC03009517 DVL 24C Feb. 27, 2015

SHF WONDER M326 W18 ET DLF HYF IEF MDC KCF BENNETT 3008 M326 DLF HYF IEF MDF
 NJW 73S W18 HOMETOWN 10Y ET DLF HYF IEF MDC SHF GOVERNESS 236G L37
 NJW P606 72N DAYDREAM 73S DLF HYF IEF PW VICTOR BOOMER P606 MDF
 NJW 94J DEW 72N DLF HYF IEF
 RST ROF STAR LINEDRIVE
 STAR AMERICA BNMHPH SS MKS 68M DLF HYF IEF STAR MKS WESTERN STAR 55
 HAROLDSON'S WLC68M KATRINA 33P DLF HYF IEF HAROLDSON'S 8E SABRE ET 42H
 HAROLDSON'S 42H ANGELINA 70L HI-CLIFFE 81X ENCHANTMENT 151E

CE	BW	WW	YW	MM	TM
4.8	3.4	55.6	88.9	25.6	53.4

Owned with Charlton Farms



Rimrock 27C ET

Ref **NJW 73S 38W *Rimrock* 27C ET** MDF
 Male PC03026211 73S 27C Feb. 5, 2015

SHF PROGRESS P20 FELTONS LEGEND 242
 NJW 76S P20 BEEF 38W ET SHF INTRSTATE D03 G06 ET
 NJW 55N STARDUST 76S NJW BW TRAILDUST 161L MDF
 NJW 57G SPIRIT QUEEN 55N ET
 REMITALL BOOMER 46B
 PW VICTOR BOOMER P606 MDF PW VICTORIA 964 8114
 NJW P606 72N DAYDREAM 73S DLF HYF IEF RU 20X BOULDER 57G DLF HYF IEF
 NJW 94J DEW 72N DLF HYF IEF NJW D32 CLAIRE 94J

CE	BW	WW	YW	MM	TM
3.6	1.3	56.8	81.5	34.5	62.9

Owned with NJW Polled Herefords and Glenlees Polled Herefords

Roselawn Polled Herefords

11E is a very good Game Changer daughter. Both she and her mother, 25B, are deep bodied, flawless uddered cows. Forward was the high selling bull in the NJW sale to Iron Cross Ranch, Texas. A little different genetics here.

There will be no Forward 252F semen sold until 2021.

Guaranteed one (1) pregnancy if implanted by a certified technician.



NJW 79Z 33B Forward 252F



Jaycee 11E

35

NJW 79Z 33B Forward 252F X Roselawn Jaycee GC ET 11E

3 Embryos

NJW 160Z 10W WHIT 33B MDF
 NJW 79Z 33B FORWARD 252F MDF
 BW 91H 100W RITA 79Z ET

H BK CCC SR GAME CHANGER ET
 ROSELAWN JAYCEE GC ET 11E DLF HYF IEF
 ROSELAWN PIPER 154U 25B DLF HYF IEF MSUDF

LJR 023R WHITMORE 10W MDF
 NJW 73S 88X DAYDREAM 160Z
 NJW 73S M326 TRUST 100W ET DLF HYF IEF
 REMITALL RITA 91H

KJ HVH 33N REDEEM 485T ET DLF HYF IEF
 NJW 78P 63N LADYSPORT 51W ET
 HARVIE OVHF WALK HARD 154U DLF HYF IEF
 ROSELAWN PAYTON 10W 42Y DLF HYC IEF

	CE	BW	WW	YW	MM	TM
PE	3.2	3.7	57.6	93.0	26.5	55.3

36

Female PC03061636 AHK 2G Feb. 15, 2019

Roselawn Jade 6153 2G

R LEADER 6964
 BOYD 31Z BLUEPRINT 6153 MDF
 NJW 91H 100W RITA 31Z ET

MHPH 101S UMPIRE 118U DLF HYF IEF MSUDF
 PCL 118U MISS JADE ET 87E DLF HYF IEF MSUDF
 PCL MISS JADE W18 2A DLF HYF IEF

HYALITE ON TARGET 936
 R MISS REVOLUTION 1009
 NJW 73S M326 TRUST 100W ET DLF HYF IEF
 REMITALL RITA 91H
 BNMPH 13P HEAT 101S DLF HYF IEF MDF
 MHPH MS 68M NITA 1112R DLF HYF IEF
 SHF WONDER M326 W18 ET DLF HYF IEF MDC
 PCL MISS JADE 657G ET 37T DLF HYF IEF

	CE	BW	WW	YW	MM	TM
	2.8	3.8	60.3	98.4	28.0	58.2

A Blueprint heifer out of a first calf Umpire. Her mating to TH Frontier should be interesting. You won't want to miss her.

AI bred to TH Frontier 174E on May 13, 2020. Pasture exposed to Blair Athol 845C Eagle ET 59F from June 5 to August 10, 2020. Preg checked safe to AI date.



Jade 2G

Roselawn Polled Herefords



Miss Liner 206E 31H

37 Roselawn EB *Miss Liner* 206E 31H
 Female Applied For AHK 31H Feb. 26, 2020

TH 403A 475Z PIONEER 358C ET TH 89T 755T STOCKMAN 475Z
 TH 13Y 358C BOTTOM LINE 206E TH 71U 17Y RITA 403A
 TH 54W 719T BETH 13Y TH 122 71I VICTOR 719T DLF HYF IEF MDF
 TH 6S 45P BETH 54W
 BNC W18 EXCELSIOR 113B DLF HYF IEF MDC SHF WONDER M326 W18 ET DLF HYF IEF MDC
 BIRD'S-HILL PEARL 37U DLF HYF IEF
 ROSELAWN AYWON JOY 113B 11D DLF HYF IEF MSUDF HAROLDSON'S TANK 45P 10W DLF HYF IEF
 ROSELAWN PAYTON 10W 12A ROSELAWN MARINA 89W 34Y DLF HYF IEF

	CE	BW	WW	YW	MM	TM
PE	-4.2	5.1	70.0	115.5	27.0	62.0

A dark red, eye catching Bottom Line out of the Reserve Champion MB Livestock Expo female. She would be a great junior prospect for Bonanza in Brandon next year.

Owned with Chula-Vista Polled Herefords



Miss Liner 206E 35H

38 Roselawn *Miss Liner* 206E 35H
 Female PC03073241 AHK 35H Feb. 28, 2020

TH 403A 475Z PIONEER 358C ET TH 89T 755T STOCKMAN 475Z
 TH 13Y 358C BOTTOM LINE 206E TH 71U 17Y RITA 403A
 TH 54W 719T BETH 13Y TH 122 71I VICTOR 719T DLF HYF IEF MDF
 TH 6S 45P BETH 54W
 BBSF 29W YAMAHA 62Y DLF HYF IEF BBSF 101N WRANGLER 29W DLF HYF IEF
 ROSELAWN HANNA 62Y 53B BBSF 3K KASHMIR ET 69P DLF HYF IEF
 ROSELAWN RHENA 121R 22U DLF HYF IEF DTHF RASPUTIN 121R DLF HYF IEF
 GHC MISS LASSIE 50N

	CE	BW	WW	YW	MM	TM
	-5.4	4.8	68.0	112.5	24.3	58.3

Another dark red, Bottom Line daughter. She'll look good in the show ring and go on to work for you in the pasture too.



Miss Liner 206E 45H

39 Roselawn EB *Miss Liner* 206E 45H
 Female Applied For AHK 45H Mar. 1, 2020

TH 403A 475Z PIONEER 358C ET TH 89T 755T STOCKMAN 475Z
 TH 13Y 358C BOTTOM LINE 206E TH 71U 17Y RITA 403A
 TH 54W 719T BETH 13Y TH 122 71I VICTOR 719T DLF HYF IEF MDF
 TH 6S 45P BETH 54W
 BNC W18 EXCELSIOR 113B DLF HYF IEF MDC SHF WONDER M326 W18 ET DLF HYF IEF MDC
 BIRD'S-HILL PEARL 37U DLF HYF IEF
 ROSELAWN JOY 113B 33E BLAIR-ATHOL HE DA MAN 49T
 RAWCLIFFE 49T ROSE 14Y DLF HYF IEF ROSELAWN ERIN 22N 15R

	CE	BW	WW	YW	MM	TM
PE	-5.6	5.4	64.6	109.9	24.4	56.7

A heifer with a lot of depth and eye appeal. She is dark red and pigmented as well. Really good uddered cows in this female's pedigree.

Owned with Erin Brook Polled Herefords

Manns Polled Herefords

This is my Dad's heifer. She is right from the top of his group. She comes from one of the best cow families around here. It's hard selling these 69Z daughters because they make fantastic cows. This one will be no exception.

AI bred to McCoy Z426 Legacy 9F on May 4, 2020. Pasture exposed to Til Toba Elvis 16S 11E from June 1 to August 5, 2020.



Paula 10E 51G

40 Female **PC03068950** **UBT 51G** **Mar. 19, 2019**

MANN'S Paula 10E 51G

MAR 120U OGRE 233X DLF HYF IEF
MAR 233X ZAP 69Z DLF HYF IEF
 MA 86R TAMI 26L 8X

NJW 73S W18 HOMEGROWN 8Y ET DLF HYF IEF MDC
MANN'S PAULA 22A 10E
 MANN'S PAULA 15R 22A

MAR 79R ULTRA 120U DLF HYF IEF
 MAR 79R CANDICE 258U
 MEADOW-ACRES CONNECTED 13K 86R
 LAMPADA VENTURE TAMI 26L
 SHF WONDER M326 W18 ET DLF HYF IEF MDC
 NJW P606 72N DAYDREAM 73S DLF HYF IEF
 DTHF PILGRIM 28Y DLF HYF IEF
 MANN'S PAULA 60H 15R

CE	BW	WW	YW	MM	TM
2.2	4.2	49.2	78.9	28.2	52.8

41 Female **PC03068957** **PBHR 75G** **Mar. 26, 2019**

PBHR Alec 8A 75G

HI-CLIFFE WLB SAMMY 13X DLF HYF IEF
WLB BULL 13X 98B DLF HYF IEF
 WLB 21T QUEEN 50Y DLF HYF IEF MSUDF

TRI-AC UNTIED 58G 500U DLF HYF IEF
TRI-AC ALEC 500U 8A
 TRI-AC PAULA 5L 37S

DTHF TANK 64T
 HI-CLIFFE 5J SAMMY 63S DLF HYF IEF
 WLB QUAKER 10H 21T
 WLB 035J FLORA 14N DLF HYF IEF
 RU 20X GALAXY 58G
 LEVELDALE MS OAKLAND 15M 24P
 TRI-AC JUBE 7L 12N
 TRI-AC MISS MANDI 5L

CE	BW	WW	YW	MM	TM
-2.7	4.5	54.5	86.2	22.8	50.1

Alec is a thick, deep made heifer. I can't say enough about these 98B daughters because they have made very good cows.

AI bred to ANL 17A Hi Tech 58W 80C on May 4, 2020. Pasture exposed to KTCT 46G Gladstone 8G from June 1 to August 5, 2020.



Alec 8A 75G

Manns Polled Herefords



Willow 98E 5G

42 Female PC03069027 **PBHR MW Willow 98E 5G** PBHR 5G Feb. 17, 2019

UPH PROSPECTOR P152
WHITEHAWK WARRIOR 845C ET
 GRANDVIEW CMR 4003 BETH Y115ET

TH 71U 17Y MOUNTAINEER 420A DLF HYF IEF
ANL C 420A WILLOW 122C 98E
 ANL C 143 WILLOW 3W 122C

HUTH PROSPECTOR K085
 UPH MANDY M863
 GRANDVIEW VIC H132 23G 4003 ET
 DJB 46B BETH 1L
 TH 22R 16S LAMBEAU 17Y
 TH 7N 45P RITA 71U DLF HYF IEF
 WSF CAN-AM PRINCE 143 DLF HYF IEF
 DWT WILLOW 3W

CE	BW	WW	YW	MM	TM
2.2	2.5	54.4	87.5	24.8	52.0

Sired by Whitehawk Warrior, this heifer has a very bright future in front of her. She is very clean fronted with lots of depth.

AI bred to McCoy Z426 Legacy 9F on May 4, 2020. Pasture exposed from to Til Toba Elvis 16S 11E from June 1 to August 5, 2020.

Owned with Wanda Wray



Yolanda 15B 82G

43 Female PC03068961 **PBHR Yolanda 15B 82G** PBHR 82G Mar. 31, 2019

FLYER CATTLE FITCH 12A DLF HYF IEF
DTHF DALTON 191D DLF HYF IEF MSUDF
 DTHF BERNICE 66B

TIL-TOBA YOUNG GUN 3P 14Y DLF HYF IEF
MIL-WRAY YOLANDA 15B
 MIL-WRAY SYBIL 35Y

MSU TCF REVOLUTION 4R DLF HYF IEF
 CLB ABERCROMBIE 20Y DLF HYF IEF
 ANL DM 719T VICTOR 76S ET 47Z DLF HYF IEF
 DTHF LADY LUCK 100Y
 NBG 69T THE WONDERER 36R ET 3W DLF HYF IEF
 DXB 75M MELODY 3P
 GH ADAMS 179R STANLEY 180U
 MIL-WRAY TOOTS 30P

CE	BW	WW	YW	MM	TM
4.2	2.8	57.5	94.0	20.8	49.6

A nice moderate framed Dalton daughter out of a good productive cow. She should follow in her mother's footsteps.

AI bred to McCoy Z426 Legacy 9F on May 4, 2020. Pasture exposed to Til Toba Elvis 16S 11E from June 1 to August 5, 2020.



Rita 31Y 78G

44 Female PC03068959 **PBHR Rita 31Y 78G** PBHR 78G Mar. 29, 2019

FLYER CATTLE FITCH 12A DLF HYF IEF
DTHF DALTON 191D DLF HYF IEF MSUDF
 DTHF BERNICE 66B

REMITALL SUPER DUTY 42S DLF HYF IEF
SQUARE-D RITA 31Y DLF HYF IEF
 MANNS MILLIE 13M

MSU TCF REVOLUTION 4R DLF HYF IEF
 CLB ABERCROMBIE 20Y DLF HYF IEF
 ANL DM 719T VICTOR 76S ET 47Z DLF HYF IEF
 DTHF LADY LUCK 100Y
 REMITALL PATRIOT ET 13P
 REMITALL RITA 91H
 LEVELDALE MR MILLENIUM 23C 1K
 MANNS CASSIE'S PRIDE 7H

CE	BW	WW	YW	MM	TM
5.3	1.5	47.1	79.7	25.1	48.7

This heifer is out of a very productive Super Duty daughter. Rita is a long, deep made heifer that will make a great cow.

AI bred to ANL 17A Hi Tech 58W 80C on May 4, 2020. Pasture exposed to KTCT Gladstone 8G from June 1 to August 5, 2020.

Manns Polled Herefords

45

PBHR *Sierra* 8B 36G
 Female PC03068945 PBHR 36G Mar. 13, 2019

FLYER CATTLE FITCH 12A DLF HYF IEF
 DTHF DALTON 191D DLF HYF IEF MSUDF
 DTHF BERNICE 66B

GH ADAMS 179R STANLEY 180U
 MIL-WRAY SIERRA 8B
 MIL-WRAY CHRIS 9W

MSU TCF REVOLUTION 4R DLF HYF IEF
 CLB ABERCROMBIE 20Y DLF HYF IEF
 ANL DM 719T VICTOR 76S ET 47Z DLF HYF IEF
 DTHF LADY LUCK 100Y
 FE 17L STAN BRIT 179R
 BLAIR-ATHOL LD GEENA 8P
 MEADOW-ACRES CONNECTED 13K 86R
 MIL-WRAY RENAE 35P

CE	BW	WW	YW	MM	TM
6.2	1.8	46.5	80.7	23.6	46.9

This heifer is a big, powerful girl but is still very feminine. We calved out our first Dalton daughters this spring and they were good.

AI bred to McCoy Z426 legacy 9F on May 2, 2020. Pasture exposed to Blair Athol 206 End Zone 64G from June 1 to August 5, 2020.



Sierra 8B 36G

46

PBHR *Sandra* 2B 39G
 Female PC03068948 PBHR 39G Mar. 15, 2019

FLYER CATTLE FITCH 12A DLF HYF IEF
 DTHF DALTON 191D DLF HYF IEF MSUDF
 DTHF BERNICE 66B

GH ADAMS 179R STANLEY 180U
 MIL-WRAY SANDRA 2B
 MIL-WRAY MARY 4W

MSU TCF REVOLUTION 4R DLF HYF IEF
 CLB ABERCROMBIE 20Y DLF HYF IEF
 ANL DM 719T VICTOR 76S ET 47Z DLF HYF IEF
 DTHF LADY LUCK 100Y
 FE 17L STAN BRIT 179R
 BLAIR-ATHOL LD GEENA 8P
 ANL 4L MATADOR 76P
 DTHF REBECA 15R

CE	BW	WW	YW	MM	TM
3.4	2.9	50.7	84.6	27.0	52.4

A longer made, rugged female with a balanced set of EPDs. She is out of a good daughter of Stanley.

AI bred to McCoy Z426 Legacy 9F on May 5, 2020. Pasture exposed to Til Toba Elvis 16S 11E from June 1 to August 5, 2020.



Sandra 2B 39G

47

PBHR *Legacy* 42A 57G
 Female PC03061676 PBHR 57G Mar. 20, 2019

HI-CLIFFE WLB SAMMY 13X DLF HYF IEF
 WLB BULL 13X 98B DLF HYF IEF
 WLB 21T QUEEN 50Y DLF HYF IEF MSUDF

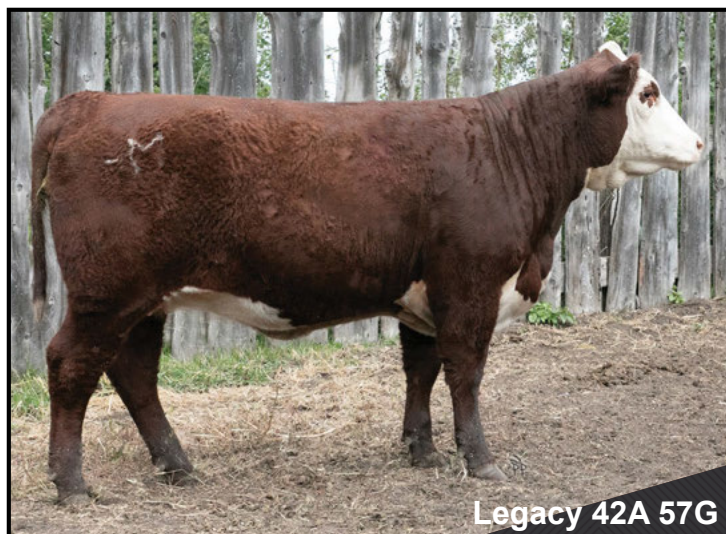
DTHF PILGRIM 28Y DLF HYF IEF
 PBHR LEGACY 10W 42A
 PBHR LEGACY 81L 10W

DTHF TANK 64T
 HI-CLIFFE 5J SAMMY 63S DLF HYF IEF
 WLB QUAKER 10H 21T
 WLB 035J FLORA 14N DLF HYF IEF
 MJT PILGRIM 19U DLF HYF IEF
 GHC MISS KAREN 34S
 WLB NEWS 36N ET 453S
 WLB 705G MEG 81L

CE	BW	WW	YW	MM	TM
-2.9	5.2	52.2	82.5	23.9	50.0

This heifer has dark red pigment on both eyes. The 98B daughters are working very well for us. The Legacy cow family is one of my favourites.

AI bred to McCoy Z426 Legacy 9F on May 11, 2020. Pasture exposed to Til Toba Elvis 16S 11E from June 1 to August 5, 2020.



Legacy 42A 57G

Haroldson's Polled Herefords



Jessica 24E 32H

Royal really did a great job for us here and this is one that is very high on my list. She is long sided and up-headed with that proud look about her. She is a great combination of power and elegance. This one has a very bright future.

48

Haroldson's *Jessica* 24E 32H

Female PC03074272 AFSY 32H Feb. 29, 2020

H BK CCC SR GAME CHANGER ET
HAROLDSON'S JVJ ROYAL 24E DLF HYF IEF MSUDF
 HAROLDSON'S AD JESSICA 48Y 13B

TH 89T 743 UNTAPPED 425X ET DLF HYF IEF
HAROLDSON'S JESSICA ET 30A DLF HYF IEF
 TL 5073 JESSICA 751U DLF HYF IEF

KJ HVH 33N REDEEM 485T ET DLF HYF IEF
 NJW 78P 63N LADYSPORT 51W ET
 HAROLDSONS WLC RHINO ET 48Y DLF HYF IEF
 HAROLDSON'S WS JESSICA 4T 60X
 CRR ABOUT TIME 743 DLF HYF IEF MDF
 TH 16G 20N GEMINI 89T DLF HYF IEF
 SR CG HARD ROCK 5073
 TT PETUNIA 128P DLF HYF IEF

CE	BW	WW	YW	MM	TM
2.4	3.7	53.3	88.7	22.4	49.1

49

Haroldson's *Vanity* 24E 11H

Female PC03074270 AFSY 11H Feb. 9, 2020

H BK CCC SR GAME CHANGER ET
HAROLDSON'S JVJ ROYAL 24E DLF HYF IEF MSUDF
 HAROLDSON'S AD JESSICA 48Y 13B

MOHICAN WAR DRUM 409W ET DLF HYF IEF
ANL R 409W VANITY 27U 117Z
 ANL R P606 VANITY 27U

KJ HVH 33N REDEEM 485T ET DLF HYF IEF
 NJW 78P 63N LADYSPORT 51W ET
 HAROLDSONS WLC RHINO ET 48Y DLF HYF IEF
 HAROLDSON'S WS JESSICA 4T 60X
 BECKLEY 758P ONTIME 934S DLF HYF IEF
 LAGRAN MISS 243R ET DLF IEF
 PW VICTOR BOOMER P606 MDF
 ANL 69L VANITY 141N

CE	BW	WW	YW	MM	TM
-4.0	5.1	50.9	83.2	25.0	50.5



Vanity 24E 11H

This Royal daughter has a very bright future in my mind. I love her rib shape and overall mass. She is a very complete made female with that extra eye appeal. I think she will really look the part as a yearling next summer and fall.

Haroldsons Polled Herefords

Here is a Marvel female that is long sided, sound made with a great coat of hair. She is a definite junior prospect and would be a great opportunity to acquire a Marvel.



Marvel 7454 ET 30H

50

Haroldson's *Marvel* 7454 ET 30H
 Female Applied For AFSY 30H Feb. 28, 2020

UPS SENSATION 2296 ET
 H DEBERARD 7454 ET^{MDF}
 RST GAT NST Y79D LADY 54B ET

HAROLDSONS WLC RHINO ET 48Y^{DLF HYF IEF} CHURCHILL SENSATION 028X^{DLF HYF IEF}
 HAROLDSON'S HLV MARVEL 48Y 12B^{DLF HYF IEF MSUDF} HAROLDSON'S 37H MIRA ET 62K
 HAROLDSON'S MARVEL 45P 5W^{DLF HYF IEF} NJW FHF 9710 TANK 45P^{DLF HYF IEF MDF}
 REMITALL MARVEL 190S

	CE	BW	WW	YW	MM	TM
PE	-7.4	7.3	65.7	110.7	30.1	62.9

51

Haroldson's *Marvel* 7454 ET 34H
 Female Applied For AFSY 34H Feb. 29, 2020

UPS SENSATION 2296 ET
 H DEBERARD 7454 ET^{MDF}
 RST GAT NST Y79D LADY 54B ET

HAROLDSONS WLC RHINO ET 48Y^{DLF HYF IEF} CHURCHILL SENSATION 028X^{DLF HYF IEF}
 HAROLDSON'S HLV MARVEL 48Y 12B^{DLF HYF IEF MSUDF} HAROLDSON'S 37H MIRA ET 62K
 HAROLDSON'S MARVEL 45P 5W^{DLF HYF IEF} NJW FHF 9710 TANK 45P^{DLF HYF IEF MDF}
 REMITALL MARVEL 190S

	CE	BW	WW	YW	MM	TM
PE	-7.4	7.3	65.7	110.7	30.1	62.9

Full sibling to Lot 50 and another chance to buy a Marvel. This female is Josh's pick of the heifer calves. She is really clean and extended through that front end. She is big middled and really has a lot of hip to her.



Marvel 7454 ET 34H

Haroldson's Polled Herefords



Miss Tap 12H

Here is a really deep sided, soggy made heifer by Warrior. I love the cow power and the cosmetics on this one. The plan was to exhibit her and her mother as a pair this fall.

52 Haroldson's Miss Tap 12H

Female PC03074269 AFSY 12H Feb. 10, 2020

UPH PROSPECTOR P152
WHITEHAWK WARRIOR 845C ET
GRANDVIEW CMR 4003 BETH Y115ET

GRLZ TAPPIN' 39B DLF HYF IEF
GRLZ MISS TAP 75D
GRLZ JOLENE 74B

HUTH PROSPECTOR K085
UPH MANDY M863
GRANDVIEW VIC H132 23G 4003 ET
DJB 46B BETH 1L
TH 89T 743 UNTAPPED 425X ET DLF HYF IEF
MA 744T ADA 43W 39Z DLF HYF IEF
HF 102S LARIAT 32X DLF HYF IEF MSUDF
GRLZ VENUS 74Y DLF HYF IEF

CE	BW	WW	YW	MM	TM
1.0	2.8	59.1	92.9	27.1	56.6

53 Haroldson's Marvel ET 201H

Female Applied For AFSY 201H Feb. 24, 2020

CHURCHILL PILGRIM 632D ET MDF
H FHF PILGRIM 8441 ET
WLL ZOEY 3Z

NJW FHF 9710 TANK 45P DLF HYF IEF MDF
HAROLDSON'S MARVEL 45P 5W DLF HYF IEF
REMITALL MARVEL 190S

NJW 73S W18 HOMETOWN 10Y ET DLF HYF IEF MDC
CHURCHILL LADY 002X ET
TH 122 711 VICTOR 719T DLF HYF IEF MDF
WLL VENUS 19X DLF HYF IEF
FHF 8403 STARBUCK 19H
GV 579 VICTORIA 9710
PW VICTOR BOOMER P606 MDF
REMITALL MARVEL 107L 388P

CE	BW	WW	YW	MM	TM
-7.6	5.3	61.3	95.8	30.4	61.1



Marvel ET 201H

This Pilgrim heifer is really big bodied and powerful. I like the bone and the mass that this Marvel possesses. A definite future donor here.

Haroldsons Polled Herefords

This Pilgrim heifer has always been an eye catcher. This heifer is really long sided and has that extra power and performance to her. Her Tahoe mother is a big bodied, excellent milking female. Don't miss this one.



Zena 8441 16H

54 Female PC03074761 AFSY 16H Feb. 15, 2020

Haroldson's Zena 8441 16H

CHURCHILL PILGRIM 632D ET MDF
H FHF PILGRIM 8441 ET
 WLL ZOEY 3Z

SHF TAHOE R117 T100 DLF HYF IEF MSUDF
HAROLDSON'S ZENA T100 18E
 MCCOY 532M ZENA 26R DLF HYF IEF

NJW 73S W18 HOMETOWN 10Y ET DLF HYF IEF MDC
 CHURCHILL LADY 002X ET
 TH 122 711 VICTOR 719T DLF HYF IEF MDF
 WLL VENUS 19X DLF HYF IEF
 SHF RIB EYE M326 R117 DLF HYF IEF
 SHF LADY 512 L73
 KJ 520E INVESTOR 532M ET
 MCCOY 58G ZENA 32L

CE	BW	WW	YW	MM	TM
-4.7	5.4	66.5	107.4	28.5	61.8

55 Female Commercial AFSY 106H Apr. 16, 2020

Haroldson's Bella 106H

R LEADER 6964
HAROLDSON'S TRACTION ET 50E DLF HYF IEF MSUDF
 HAROLDSON'S MARVEL 45P 5W DLF HYF IEF

SHF TAHOE R117 T100 DLF HYF IEF MSUDF
COMMERCIAL DAM
 HAROLDSON'S 65Z

HYALITE ON TARGET 936
 R MISS REVOLUTION 1009
 NJW FHF 9710 TANK 45P DLF HYF IEF MDF
 REMITALL MARVEL 190S
 SHF RIB EYE M326 R117
 SHF LADY 512 L73

CE	BW	WW	YW	MM	TM
-	-	-	-	-	-

This mid April baldie heifer is a real eye catcher. She is very attractive through her front end with a lot of rib shape and power from behind. She will be a real eye catcher next summer.



Bella 106H

Haroldson's Polled Herefords



Lady 81C 64G

I really like the way this one is made. She looks good from all angles. She is up-headed and nice fronted with an ample amount of rib and capacity. She is a stout made individual.

Exposed to Haroldson's SCC Insight ET 301G from May 10 to August 1, 2020.

56 *Haroldson's Lady 81C 64G*
Female PC03074264 AFSY 64G Mar. 20, 2019

H PF WYARNO 3902 ET DLF HYF IEF
HAROLDSON'S WLC INSIGHT 81C DLF HYF IEF MSUDF SHF TAHOE R117 T100 DLF HYF IEF MSUDF
 HAROLDSONS RYTHYM T100 21Z DLF HYF IEF HAROLDSON'S TEMPTRESS 29R 81U
 HAROLDSONS WLC RHINO ET 48Y DLF HYF IEF HAROLDSON'S 37H MIRA ET 62K
HAROLDSON'S LADY 48Y 57C
 LRL MISS LAKES 50K 57M

H WCC/WB 668 WYARNO 9500 ET DLF HYF IEF
 JSF 12 VIOLET 4R
 SHF TAHOE R117 T100 DLF HYF IEF MSUDF
 HAROLDSON'S 2Z CARUSO ET 50K
 LRL 293H MISS LAKES 15G 57Z

CE	BW	WW	YW	MM	TM
-1.4	3.8	51.3	87.3	21.6	47.3

57 *Haroldson's Temptress 81C 78G*
Female PC03074268 AFSY 78G Mar. 29, 2019

H PF WYARNO 3902 ET DLF HYF IEF
HAROLDSON'S WLC INSIGHT 81C DLF HYF IEF MSUDF SHF TAHOE R117 T100 DLF HYF IEF MSUDF
 HAROLDSONS RYTHYM T100 21Z DLF HYF IEF HAROLDSON'S TEMPTRESS 29R 81U
 TH 122 71I VICTOR 521X ET DLF HYF IEF
HAROLDSON'S TEMPTRESS 521X 94C
 HAROLDSONS TEMPTRESS 4T 95Z

H WCC/WB 668 WYARNO 9500 ET DLF HYF IEF
 JSF 12 VIOLET 4R
 SHF TAHOE R117 T100 DLF HYF IEF MSUDF
 HAROLDSON'S WLL ANCHOR 4T
 HAROLDSON'S TEMPTRESS T100 33W DLF HYF IEF

CE	BW	WW	YW	MM	TM
-0.6	3.1	56.0	90.5	24.1	52.2



Temptress 81C 78G

A heifer here that is very eye appealing and attractive with that extra pigment. This heifer is very sound structured and has nice shape to her rib.

Exposed to Haroldson's SCC Insight ET 301G from May 10 to August 1, 2020. Observed bred on June 18, 2020.

Haroldson's Polled Herefords

This Upgrade daughter is a powerful, massive middle female that will make a tremendous female in production. Her mother is a beautiful uddered, Jessica daughter.

Exposed to Haroldson's SCC Insight ET 301G from May 10 to August 1, 2020.



Jessica 33D 19G

58 **Haroldson's Jessica 33D 19G**
Female PC03063598 AFSY 19G Feb. 16, 2019

SHF TAHOE R117 T100 DLF HYF IEF MSUDF
HAROLDSON'S UPGRADE T100 33D DLF HYF IEF MSUDF
 MOHICAN MISSEY 93W DLF HYF IEF

SHF RIB EYE M326 R117 DLF HYF IEF
 SHF LADY 512 L73
 MOHICAN RANGELAND 221R
 MOHICAN MISSEY 401R ET

TH 89T 743 UNTAPPED 425X ET DLF HYF IEF
HAROLDSON'S JESSICA ET 30A DLF HYF IEF
 TL 5073 JESSICA 751U DLF HYF IEF

CRR ABOUT TIME 743 DLF HYF IEF MDF
 TH 16G 20N GEMINI 89T DLF HYF IEF
 SR CG HARD ROCK 5073
 TT PETUNIA 128P DLF HYF IEF

CE	BW	WW	YW	MM	TM
-3.2	5.6	61.9	96.6	19.9	50.9

59 **Haroldson's Missey T100 25G**
Female PC03065370 AFSY 25G Feb. 26, 2019

SHF RIB EYE M326 R117 DLF HYF IEF
SHF TAHOE R117 T100 DLF HYF IEF MSUDF
 SHF LADY 512 L73

KCF BENNETT 3008 M326 DLF HYF IEF MDF
 HVH MISS HUDSON 83K 8M
 MM RSM STOCKMASTER 512 MDF
 SHF INTERSTATE D03 G28
 PW MOHICAN NASDAQ P316
 MOHICAN PET 184L
 REMITALL BOOMER 46B
 MOHICAN MISS 424G

MOHICAN RANGELAND 221R
MOHICAN MISSEY 93W DLF HYF IEF
 MOHICAN MISSEY 401R ET

CE	BW	WW	YW	MM	TM
-4.5	5.2	59.3	95.2	22.2	51.9

Here is a direct Tahoe daughter and a full sibling to Haroldson's Upgrade T10D 33A. This female is long sided and has that extra volume and mass to her center body. Definitely a great opportunity to add a very dynamic breeding piece to your operation.

Full sibling to Haroldson's Upgrade T100 33D.

Bred to Haroldson's SCC Pavati 50E 48G on May 5, 2020.



Missey T100 25G

Haroldson's Polled Herefords



Roxy 35G

If you like them short marked and dark then you can add this one to your list. Roxy is a very complete made, eye appealing heifer that will be very nice when in production.

Exposed to Haroldson's SCC Insight ET 301G from May 10 to August 1, 2020. Observed bred on May 15, 2020.

60 Haroldson's RM *Roxy* 41D 35G

Female PC03074767 AFSY 35G Mar. 1, 2019

SR CG HARD ROCK 5073
HAROLDSON'S RED ZONE ET 41D DLF HYF IEF MSUDF
 HAROLDSON'S MARVEL 45P 5W DLF HYF IEF

DB HARD DRIVE ET
 SR MS MARK 9167
 NJW FHF 9710 TANK 45P DLF HYF IEF MDF
 REMITALL MARVEL 190S

HAROLDSONS WLC RHINO ET 48Y DLF HYF IEF
HAROLDSON'S ROXY 48Y 11D
 HAROLDSONS ROXY P606 21Y

SHF TAHOE R117 T100 DLF HYF IEF MSUDF
 HAROLDSON'S 37H MIRA ET 62K
 PW VICTOR BOOMER P606 MDF
 HAROLDSON'S ROXY 40J 87M

CE	BW	WW	YW	MM	TM
-3.8	4.1	51.4	83.0	27.4	53.1

61 Haroldson's *Mae* 41D 99G

Female PC03063612 AFSY 99G Apr. 12, 2019

SR CG HARD ROCK 5073
HAROLDSON'S RED ZONE ET 41D DLF HYF IEF MSUDF
 HAROLDSON'S MARVEL 45P 5W DLF HYF IEF

DB HARD DRIVE ET
 SR MS MARK 9167
 NJW FHF 9710 TANK 45P DLF HYF IEF MDF
 REMITALL MARVEL 190S

REMITALL KOSHER 137K
CIRCLE-D 137K MAE 49S
 CIRCLE-D 9F MAE 10M

REMITALL GOVERNOR 236G
 REMITALL CLASSY SARA 193C
 CIRCLE-D 832W BIG BEN 9F
 CIRCLE-D 32D DESIRE 44H

CE	BW	WW	YW	MM	TM
-2.5	5.2	49.0	78.7	24.8	49.3



Mae 41D 99G

Here is another dark, eye appealing Red Zone daughter. Her mom is an old Circle D daughter that is still getting the job done. Quality and longevity in this package.

Exposed to Haroldson's SCC Insight ET 301G from May 10 to August 1, 2020.

Haroldson's Polled Herefords

I think this heifer is very fault free in terms of the way she is put together. She is long sided and has a very nice look about her. Here is a great opportunity to acquire a "Mira" daughter.

Exposed to Haroldson's SCC Insight ET 301G from May 10 to August 1, 2020.



Mira 81C 63G

62

Haroldson's Mira 81C 63G

Female PC03074265 AFSY 63G Mar. 20, 2019

H PF WYARNO 3902 ET DLF HYF IEF
HAROLDSON'S WLC INSIGHT 81C DLF HYF IEF MSUDF SHF TAHOE R117 T100 DLF HYF IEF MSUDF
 HAROLDSONS RYTHYM T100 21Z DLF HYF IEF HAROLDSON'S TEMPTRESS 29R 81U
 HARVIE TAILOR MADE ET 7W DLF HYF IEF
HAROLDSONS WLC MIRA ET 42Z DLF HYF IEF
 HAROLDSON'S 37H MIRA ET 62K
 H WCC/WB 668 WYARNO 9500 ET DLF HYF IEF
 JSF 12 VIOLET 4R
 HARVIE TRAVELER 69T DLF HYF IEF MDF
 HARVIE MISS FIREFLY 51F DLF HYF IEF
 REMITALL HOLLYWOOD 37H
 HAROLDSON'S CU DESTINY 2Z 19G

CE	BW	WW	YW	MM	TM
-2.7	4.2	54.6	91.8	19.9	47.2

63

Haroldson's Zena 81C 85G

Female PC03074266 AFSY 85G Apr. 1, 2019

H PF WYARNO 3902 ET DLF HYF IEF
HAROLDSON'S WLC INSIGHT 81C DLF HYF IEF MSUDF SHF TAHOE R117 T100 DLF HYF IEF MSUDF
 HAROLDSONS RYTHYM T100 21Z DLF HYF IEF HAROLDSON'S TEMPTRESS 29R 81U
 SHF RIB EYE M326 R117 DLF HYF IEF
 SHF LADY 512 L73
 KJ 520E INVESTOR 532M ET
MCCOY 532M ZENA 26R DLF HYF IEF
 H WCC/WB 668 WYARNO 9500 ET DLF HYF IEF
 JSF 12 VIOLET 4R
 MCCOY 58G ZENA 32L

CE	BW	WW	YW	MM	TM
-4.1	5.3	57.7	93.0	24.6	53.5

Another very useful kind of a female that is very fault free. She is sound made and long sided.

Exposed to Haroldson's SCC Insight ET 301G from May 10 to August 1, 2020.



Zena 81C 85G

Haroldson's Polled Herefords



Marvel 2G

This Insight daughter has a very maternal look to her. She is big bodied and easy fleshing. She is very sound structured with that extra length of body.

Bred to Haroldson's Traction 50E 100G on June 22, 2020.

64 **Haroldson's *Marvel* 201D 2G**

Female PC03063592 AFSY 2G Jan. 22, 2019

CHURCHILL RED BULL 200Z DLF HYF IEF MDF
HAROLDSON'S INSIGHT ET 201D DLF HYF IEF MSUDF
 TL 5073 JESSICA 751U DLF HYF IEF

CHURCHILL SENSATION 028X DLF HYF IEF
 CHURCHILL LADY 002X ET
 SR CG HARD ROCK 5073
 TT PETUNIA 128P DLF HYF IEF

SHF TAHOE R117 T100 DLF HYF IEF MSUDF
 HAROLDSON'S 37H MIRA ET 62K
 PED HAROLDSONS BOOMTOWN ET 40S
 REMITALL MARVEL 190S

CE	BW	WW	YW	MM	TM
1.9	3.8	53.9	91.1	27.5	54.5

65 **Haroldson's *Belle* 208E 28G**

Female PC03063600 AFSY 28G Feb. 28, 2019

R LEADER 6964
HAROLDSON'S SCC HAWK ET 208E DLF HYF IEF
 HAROLDSON'S HLV MARVEL 48Y 12B DLF HYF IEF MSUDF

HYALITE ON TARGET 936
 R MISS REVOLUTION 1009
 HAROLDSONS WLC RHINO ET 48Y DLF HYF IEF
 HAROLDSON'S MARVEL 45P 5W DLF HYF IEF

LV ON THE JOB L 63B DLF HYF IEF MSUDF
LV BELLE L 32E
 DXB 16R BELLE 17U

REMITALL-WEST CONSTRUCTOR 21X DLF HYF IEF
 REMITALL NETTIE 122R
 HARVIE RAFTSMAN 16R DLF HYF IEF MDF
 DXB 60G APRIL BELLE ET 61M

CE	BW	WW	YW	MM	TM
4.4	2.2	55.3	87.8	22.3	50.0



Belle 208E 28G

Here is a very complete made Hawk female with a lot of style and eye appeal.

Exposed to Haroldson's SCC Insight 301G from May 10 to August 1, 2020.

Haroldson's Polled Herefords

66

Haroldson's *Mindy* 208E 93G

Female PC03074263 AFSY 93G Apr. 6, 2019

R LEADER 6964
HAROLDSON'S SCC HAWK ET 208E DLF HYF IEF
 HAROLDSON'S HLV MARVEL 48Y 12B DLF HYF IEF MSUDF
 HAROLDSONS WLC RHINO ET 48Y DLF HYF IEF
 HAROLDSON'S MARVEL 45P 5W DLF HYF IEF
 SHF TAHOE R117 T100 DLF HYF IEF MSUDF
 HAROLDSON'S 37H MIRA ET 62K
HAROLDSON'S MINDY 48Y 33E
 ANL D&M 8203 MINDY 76S ET 37Z DLF HYF IEF ANL 36N MINDY 76S

CE	BW	WW	YW	MM	TM
1.1	4.1	60.5	97.8	24.1	54.3

A long sided heifer with a great disposition.

Exposed to Haroldson's SCC Insight ET 301G from May 10 to August 1, 2020. Observed bred on May 15, 2020.



Mindy 208E 93G

67

Haroldson's *Mindy* 201D 3G

Female PC03063593 AFSY 3G Jan. 28, 2019

CHURCHILL RED BULL 200Z DLF HYF IEF MDF
HAROLDSON'S INSIGHT ET 201D DLF HYF IEF MSUDF
 TL 5073 JESSICA 751U DLF HYF IEF
 CHURCHILL SENSATION 028X DLF HYF IEF
 CHURCHILL LADY 002X ET
 SR CG HARD ROCK 5073
 TT PETUNIA 128P DLF HYF IEF
 HH ADVANCE 5161R DLF IEF
 HH MISS ADVANCE 752G
ANL D&M 8203 MINDY 76S ET 37Z DLF HYF IEF
 ANL 36N MINDY 76S
 HF 4L BEYOND 36N
 ANL 57G MINDY 14L

CE	BW	WW	YW	MM	TM
1.1	4.3	50.3	81.0	23.5	48.7

Another Insight daughter who is long bodied and smooth made. Her mother is a very nice uddered, sound made female.

Bred to Haroldson's SCC Pavati 50E 48G on May 25, 2020. Exposed to Haroldson's Traction 50E 100G from June 20 to August 1, 2020.



Mindy 201D 3G

68

Haroldson's *JVJ Lady* 72G

Female PC03063610 AFSY 72G Mar. 24, 2019

R LEADER 6964
HAROLDSON'S SCC HAWK ET 208E DLF HYF IEF
 HAROLDSON'S HLV MARVEL 48Y 12B DLF HYF IEF MSUDF
 HAROLDSONS WLC RHINO ET 48Y DLF HYF IEF
 HAROLDSON'S MARVEL 45P 5W DLF HYF IEF
 HARVIE RAFTSMAN 16R DLF HYF IEF MDF
 HAROLDSON'S 37H MIRA ET 62K
HAROLDSON'S LADY 15W 49E
 HAROLDSON'S LADY 48Y 57C
 HYALITE ON TARGET 936
 R MISS REVOLUTION 1009
 HAROLDSONS WLC RHINO ET 48Y DLF HYF IEF
 HAROLDSON'S 37H MIRA ET 62K
 HAROLDSONS WLC RHINO ET 48Y DLF HYF IEF
 LRL MISS LAKES 50K 57M

CE	BW	WW	YW	MM	TM
5.8	2.0	55.5	90.8	21.9	49.7

This Hawk female is very complete made with that nice dark colour.

Exposed to Haroldson's SCC Insight ET 301G from May 10 to August 1, 2020.



Lady 72G

Haroldson's Polled Herefords



Pavati 48G

Ref **Haroldson's SCC *Pavati* 48G** DLF HYF IEF MSUDF
 Male PC03061874 AFSY 48G Mar. 14, 2019

R LEADER 6964
 HAROLDSON'S TRACTION ET 50E DLF HYF IEF MSUDF
 HAROLDSON'S MARVEL 45P 5W DLF HYF IEF

HAROLDSONS WLC RHINO ET 48Y DLF HYF IEF
 HAROLDSON'S WSF LASSIE 48Y 42C
 HAROLDSON'S LASSIE 425X 22Z DLF HYF IEF

HYALITE ON TARGET 936
 R MISS REVOLUTION 1009
 NJW FHF 9710 TANK 45P DLF HYF IEF MDF
 REMITALL MARVEL 190S
 SHF TAHOE R117 T100 DLF HYF IEF MSUDF
 HAROLDSON'S 37H MIRA ET 62K
 TH 89T 743 UNTAPPED 425X ET DLF HYF IEF
 GHC MISS LASSIE 3L

CE	BW	WW	YW	MM	TM
-0.2	3.9	57.5	87.6	36.2	65.0

Owned with Starry Cattle Co. and First Class Marketing



Insight ET 201D

Ref **Haroldson's SCC *Insight* ET 301G**
 Male Applied For AFSY 301G Mar. 16, 2019

CHURCHILL RED BULL 200Z DLF HYF IEF MDF
 HAROLDSON'S INSIGHT ET 201D DLF HYF IEF MSUDF
 TL 5073 JESSICA 751U DLF HYF IEF

CHURCHILL SENSATION 028X DLF HYF IEF
 CHURCHILL LADY 002X ET
 SR CG HARD ROCK 5073
 TT PETUNIA 128P DLF HYF IEF
 SHF TAHOE R117 T100 DLF HYF IEF MSUDF
 HAROLDSON'S 37H MIRA ET 62K
 NJW FHF 9710 TANK 45P DLF HYF IEF MDF
 REMITALL MARVEL 190S

CE	BW	WW	YW	MM	TM
0.9	3.7	53.4	90.4	26.9	53.6

Owned with Arthur Polled Herefords



Royal 24E

Ref **Haroldson's JVJ *Royal* 24E** DLF HYF IEF MSUDF
 Male PC03036068 AFSY 24E Feb. 20, 2017

KJ HVH 33N REDEEM 485T ET DLF HYF IEF
 H BK CCC SR GAME CHANGER ET
 NJW 78P 63N LADYSPORT 51W ET

HAROLDSONS WLC RHINO ET 48Y DLF HYF IEF
 HAROLDSON'S AD JESSICA 48Y 13B
 HAROLDSON'S WS JESSICA 4T 60X

SHF RADAR M326 R125 DLF HYF IEF
 HVH OKSANA 4L 33N DLF HYF IEF
 TH JWR SOP 16G 57G TUNDRA 63N DLF HYF IEF
 NJW BW LADYSPORT DEW 78P ET DLF HYF IEF
 SHF TAHOE R117 T100 DLF HYF IEF MSUDF
 HAROLDSON'S 37H MIRA ET 62K
 HAROLDSON'S WLL ANCHOR 4T
 TL 5073 JESSICA 751U DLF HYF IEF

CE	BW	WW	YW	MM	TM
-2.4	5.6	57.9	97.6	24.0	53.0

Owned with Blairs.Ag Cattle Co.

Terms & Conditions

TERMS:

The terms of the sale are cash or cheque, payable at par at the sale location. The right of property shall not pass until after settlement has been made; no invoicing on buyers in attendance unless previous arrangements have been made. Every animal sells to the highest bidder and in cases of disputes, the auctioneer's decision will be final. Announcements from the auction block will take precedence over the printed matter in the catalogue. Current exchange rates will be announced sale day. All monies are in Canadian funds.

CERTIFICATE OF REGISTRATION:

Each animal will carry papers issued by the Canadian Hereford Association. A certificate of registry duly transferred will be furnished to the buyer for each animal after payment has been made.

PEDIGREE ESTIMATES:

Pedigree Estimates (PE) are created on the projected mating of the animal's sire and dam based on averages of the two, creating estimated values that do not hold the same accuracy of actual EPDs issued from the association and should be used as such.

HEALTH:

All animals in the sale have met all necessary health requirements.

GUARANTEE:

Each animal becomes the purchaser's risk immediately after the animal is sold. All animals in this sale will be sold under the terms and guarantees set forth by the Canadian Hereford Association with regard to health, freedom from defects and from both reproductive and specific genetic unsoundness.

PREGNANCY INFORMATION:

All serviceable age females have been pregnancy examined by an accredited veterinarian, giving an estimated length of gestation. This estimated gestation period shall be used only as a guideline to calving and is not a guarantee of actual service.

EXPORT:

Purchases going to the United States will be delivered at cost.

LIABILITIES:

All persons attend the sale at their own risk. The seller, facility owner and sale manager assume no liability legal or otherwise, for any accidents that occur. It is understood that T Bar C Cattle Co. (2013) Ltd. is acting only as a medium between buyer and seller and is not responsible for any failure on the part of either party to live up to his obligations. Neither does T Bar C Cattle Co. (2013) Ltd. assume any financial obligations to collect or enforce collection of any monies between parties and any legal action that may in exceptional cases be taken must be between the buyer and the seller. T Bar C Cattle Co. (2013) Ltd. assumes no responsibility for any credit extended by the seller to the buyer. The buyer must look to the seller for fulfillment of all guarantees and representations made hereunder.

DELIVERY:

Assistance will be given in getting your purchases home. Each animal becomes the risk of the purchaser as soon as sold.

PHONE, MAIL, WIRE BIDS:

Bidders unable to attend the sale may phone, wire or mail their bids and instructions to the sale manager, auctioneer or special representatives. Bids must be received in sufficient time prior to the sale.

INSURANCE:

We strongly recommend that insurance is purchased for full value.

ERRORS:

All announcements at sale time, written or oral, supercede any written material in the catalogue.

Return Undeliverable
 Canadian Addresses To:
T Bar C Cattle Co. Ltd.
Box 2330
Warman, SK S0K 4S0



Blair Athol 124E Sargent 41G
 Reserve Division Champion Bull at Bonanza
 2020 for Kylee Dixon
 Owned by Rafter U



Blair Athol 124E Applause 122G
 Reserve Champion Female at Bonanza 2020 for
 Christin Dixon



Blair-Athol 97B Loaded 115F
 2019 RAWF Reserve Champion
 Junior Yearling Bull
 Owned by Oulton Farms



Blair Athol 27C Diane 8G
 Reserve Champion Bred and Owned Yearling at
 Bonanza 2020 for Jackson Lees



Blair Athol 206E Silver 47G
 2020 Bonanza Class winner for Kylee Dixon
 Owned with Kris Gordon



Haroldson's JVJ Royal 24E
 2019 Agribition Senior Champion Bull and
 Reserve National Champion Bull
 Owned with Blairs.Ag Cattle Co.



Haroldson's SCC Marvel ET 280G
 2019 Agribition Junior Heifer Calf Champion
 Owned with Steven Knutson



Haroldson's SCC Pavati 48G
 2019 Agribition Reserve Champion
 Junior Bull Calf
 Owned with Starry Cattle Co.
 and First Class Marketing



Haroldson's United 33D 36G
 2019 Agribition Junior Bull Calf Champion,
 National Champion Bull,
 and President's Classic All Breed Champion
 Owned with Poplar Meadows Angus
 and Hoffman Ranch



Haroldson's SCC Red Zone 16G
 2019 Agribition Reserve Champion
 Senior Bull Calf
 Owned Lohner Herefords and Starry Cattle Co.



Haroldson's Hawn
 2020 Bonanza Reserve Champion Steer
 for Kellyn Cudmore

Created by

