

PREMIER & GUESTS

Falls View

PRODUCTION
SALE

DECEMBER

28

2019

SCOTIABANK CONVENTION CENTRE • NIAGARA FALLS, ON • 7:00 PM

Welcome...

It is with a great deal of pleasure and excitement that I would like to welcome you all to the second Falls View Production Sale.

I think it is important to thank all the people that were involved in making Falls View 2018 a great success. To the consignors, sales staff and most importantly, all the people that took the time to attend last year or tuned in online to watch...thank you!

As we have worked to put together the offering for this year, we did not waiver from our initial philosophy of offering the most sought after genetics represented by the leaders of the industry within their particular breed.

Whether it be the next impact sire for your program, a donor female from breed leading cow families, that special show heifer prospect for next year and beyond or frozen embryos and semen that would normally not be available, I truly believe, as you read through the catalogue, you will find genetics from the most sought after and predictable programs in the business.

We sincerely look forward to seeing everyone December 28 in Niagara Falls for an event like no other.

- PETER FRIJTERS

**For our USA friends to the south, keep in mind the buying power you have with the value of your strong US\$ dollar. \$1,000 CDN is equivalent to \$750 USD.*
We will also look after doing all testing required to get your purchases across the border.*



PREMIER & GUESTS

Sale Day Information

Falls View

PRODUCTION SALE

SALE STAFF

Auctioneer, Chris Poley	306-220-5006
Ringman, Shane Michelson	403-363-9973
Ringman, Ben Wright	519-374-3335
Ringmen, Carl Wright	519-369-7489

Peter Frijters	519-276-9314
Mark Shologan	780-699-5082
Kent McCune	817-602-8629
Ryan Wernicke	815-739-7754
Billy Elmhirst	705-761-0896
Jimmy Joe Henderson	403-740-9270

HOTEL INFORMATION

Marriott Niagara Falls Hotel Fallsview
6740 Fallsview Blvd 888-501-8916

INSURANCE

Insurance will be available sale day.

CATALOGUE DESIGN



VIEW THE CATALOGUE ONLINE AT:
WWW.BUYAGRO.COM

DECEMBER 28, 2019

SCOTIABANK CONVENTION CENTRE
6815 STANLEY AVENUE
7:00 PM • NIAGARA FALLS, ON

WATCH & BID ONLINE...

Internet Bidding Available

DLMS
www.dlms.ca

For more information call DLMS:
Mark Shologan 780.699.5082 or
DLMS Purebred Team 780.991.3025

LiveAuctions.TV

Jessy Milne-Smith 613-229-1073

A NIGHT OF CANADIAN COUNTRY
BANDS • BITES • BREWS

FEATURING
BRETT KISSEL

DECEMBER 29
SCOTIABANK CONVENTION CENTRE
NIAGARA FALLS

WITH PERFORMANCES BY
ERIC THIRIDGE EMILY REID

Dust off those cowboy boots & get ready for a good time!

LINE DANCING SOUTHERN STYLE EATS BEER TENTS

To purchase tickets, visit
fallsconventions.com/lance-festival or call 1-888-997-6222

fallsconventions.com COUNTRY 95 niagarahealth foundation

From the desk at T Bar...

With great honour and pride, all of us at T Bar C, along with Premier Livestock, are proud to unveil this fantastic offering we have assembled all year long, in one of the most prestigious events known in the purebred cattle business. Last year's sale was overwhelming on so many levels and we have gone even farther to offer a selection of genetics that is incomparable in one location, under one gavel, in one evening.

The Premier/Hasson outfit has been a dominant force in breeding some of the finest genetics available. Their force is also shown when it comes to campaigning at all the major shows across the continent. In saying that, they present you the two time Royal and Supreme Champion Bull, HiCaliber, that is available to walk in your own pastures. Truly a sale feature! Not to mention the three bred heifers have that donor quality written all over them and heifer calves that have hunted all fall and in particular, the reigning Intermediate Heifer Calf Champion, that is a barn favourite from the Royal. Also note, Peter and crew were the Premier Breeder of the National Black Angus Show this year.

The consignors that are included are from the forefront of the industry. I don't think I can praise enough that the genetics on offer are from the untouchable list. Pick of the Blairs Ag cow herd is something that is extra special. Having picks of the largest cowherds in the Angus and Simmental sector are definitely intriguing. The live lots have been carefully selected for many reasons. I promise there's a story behind each and every one of them that are encouraging for purchase including the Agribition Hereford Champion Bull. The frozen genetics are something else. Rare, valuable and able to fast track your program. Including more championship livestock then ever before! Please pay close attention to the recipe of your next great breeding decision.

The Falls View Sale has turned into a domino effect. This sale is an absolute experience. The setting of the sale is filled with an atmosphere that is vibrant and contagious to any purebred breeder. The Falls itself is, of course, scenic, but the location of the sale, the casino and the wine tours are an added bonus that you'll absolutely adore. We encourage and endorse all the purebred world to consider attending and participating. From all of us, we thank you in advance and if you have any questions please contact any of us at T Bar C. We look forward to hearing from you and will handle all business with confidentiality and respect.

See you beside The Falls!

BEN WRIGHT

P.S. Please consider booking rooms in advance and if any help is needed please contact any of us listed.



SALE MANAGEMENT

T Bar C Cattle Co. Ltd.
Box 2330, Warman, SK S0K 4S0
Office: 306-933-4200
Fax: 306-934-0744
info@tbarc.com
www.tbarc.com



CHRIS POLEY
306-220-5006



SHANE MICHELSON
403-363-9973



BEN WRIGHT
519-374-3335

Make plans to join us
beside the falls...

Schedule of Events

December 28

1:00 - 3:00 PM

Wine Tour at Cheateau des charmes

4:30 PM

Viewing of Cattle on display

5:00 PM

Appetizers and Cocktails

Dinner to Follow

7:00 PM

Sale Time

9:00 PM

Entertainment and Social





LOT 1

1

MICH WHEATLAND **HICALIBER** 7197E

MICH 7197E 2014219 FEB. 20, 2017

DAMERON FIRST CLASS
EXAR CLASSEN 1422B 1702370
EXAR PRINCESS 2006

EXAR PIT BOSS 409
EXAR HIGHROSE 84026 1646636
CURTIS HIGHROSE 807

EXG RS FIRST RATE S903 R3
DAMERON NORTHERN MISS 3114
EXAR LUTTON 1831
GREENS PRINCESS 1012
EXAR SUDDEN IMPACT 1537
WK WINNIE 7305
R R FERDINAND 758D
WARDS HIGHROSE 033

BW	WW	YW	MILK	TM
3.5	55	86	24	51



MICH Wheatland HiCaliber 7197E



MICH Wheatland HiCaliber 7197E
2019 Royal Supreme Champion Bull

In keeping with tradition for this prestigious sale, we are proud to offer the two time Royal Champion and Supreme Champion Overall of the 2019 RAWF. HiCaliber has presence, loads of hair and phenotype that has been admired by some of the most respected cattlemen on the continent. His moderate birth weight and stellar bone structure are some of his finest characteristics. Every great bull is mothered by a superior cow. HighRose is an absolute work horse when it comes to her producing abilities. Her list of accomplishments is quite impressive. The 2016 Farmfair Supreme Champion Female, \$100,000 daughter at Hoffman Ranch who was the 2017 Agribition Champion Female, a \$52,500 son at Neilsen Land and Cattle, \$38,000 son at Blairs. Ag and many daughters retained in the herd at Michelson/Wheatland which has become the nucleus of their program. HiCaliber offers a different twist in pedigree to most and will add explosive thickness and style into your next calf crop. To own a bull of this nature with all the momentum behind him, it truly is an opportunity to forward your program.

Selling half interest and full possession with an added bonus of 100 straws for in herd use.
Owned by Premier / Hasson Livestock, Mainstream Genetics, Dudgeon Cattle Co. and MKC



OSU Empress 3100
Dam



Connealy Final Product
Sire



OSU EMPRESS 3100

These female embryos are the last frozen embryos we have from the now deceased, OSU Empress. I'm sure if you are reading these footnotes you are aware of the impact this cow has made to our program, as well as many others. She herself dominated the tanbark throughout her show career as a bred heifer and as a two-year-old. Then went on to breed many sale toppers and heifers that in their own right have been very successful. We will continue to work with several daughters and granddaughters within our program to continue her legacy. This mating combines the maternal power of the great Connealy Final Product, who is so well known for producing females that are deep sided, easy doing cows with great udders and combining that with the power and form of OSU Empress 3100.

2A

3 SEXED FEMALE EMBRYOS

Connealy Final Product x OSU Empress 3100

CONNEALY PRODUCT 568
CONNEALY FINAL PRODUCT 1643843
EBONISTA OF CONANGA 471

DAMERON FIRST IMPRESSION
OSU EMPRESS 3100 1821260
OSU EMPRESS 0135

G A R RETAIL PRODUCT
PRIDE FINE OF CONANGA 566
CONNEALY DEEP CANYON 454
EBONISA OF CONANGA 5469
S A V BRILLIANCE 8077
DAMERON NORTHERN MISS 3114
EXAR SPARTAN 6225
OSU EMPRESS 7165

PE	BW	WW	YW	MILK	TM
	0.7	55	98	32	59



LOT 2B



Premier Hasson Empress 917
2019 Royal Champion Intermediate
Heifer Calf



OSU Empress 3100
Dam

2B

PREMIER HASSON EMPRESS 917

PLS 917G 2094986 FEB. 7, 2019

DAMERON FIRST CLASS
COLBURN PRIMO 5153 1952445
SILVEIRAS SARAS DREAM 1339

DAMERON FIRST IMPRESSION
OSU EMPRESS 3100
OSU EMPRESS 0135

EXG RS FIRST RATE S903 R3
DAMERON NORTHERN MISS 3114
SILVEIRAS STYLE 9303
EXG SARAS DREAM S609 R3
S A V BRILLIANCE 8077
DAMERON NORTHERN MISS 3114
EXAR SPARTAN 6225
OSU EMPRESS 7165

BW	WW	YW	MILK	TM
2.3	52	87	22	48

Here's one we are very proud of. She is built the way we like cattle to look. 917G has had a very impressive run on the show road for just being a February born baby. She was Heifer Calf Champion at the Ontario Blackout Show and was just crowned Intermediate Heifer Calf Champion of the National Angus Show in Toronto. We really admire this female for her combination of stoutness, power and how bold sprung she is in her middle third while maintaining the elegance of a show female. Not only is she one we think the world of, but she is backed by the most influential cow to ever walk the pastures here at Premier, the now deceased OSU Empress 3100. This will be the last pair of heifers we will ever be able to offer from OSU Empress. 917G is a full sister to the Lot 3A heifer from last year's sale that sold to the good folks at Fallis Land and Cattle. We would like to thank Cole Fallis for doing a spectacular job with Empress 827F throughout this past year and look forward to watching her do great things for their program.



S&R Roundtable J328
Sire



LOT 2C

910G is one that possibly resembles her dam, OSU Empress, as much as any of her daughters to date. She is stout boned, big hiped and super cool looking from the side. Her sire, S&R Roundtable, is quickly becoming known for producing cattle with that extra dimension and look. She is a maternal sister to many heifers that have been very competitive for us and others and is backed by our highest income producing, no miss cow we have ever had the privilege to own.

2C

PREMIER HASSON **EMPRESS** 910

PLS 910G 2094976 JAN. 13, 2019

PLAINVIEW LUTTON E102
S&R ROUNDTABLE J328 1930958
PVF PROVEN QUEEN 786

DAMERON FIRST IMPRESSION
OSU EMPRESS 3100 1821260
OSU EMPRESS 0135

EXAR LUTTON 1831
PLAINVIEW PRIDE C123
BR MIDLAND
PVF PROVEN QUEEN 419

S A V BRILLIANCE 8077
DAMERON NORTHERN MISS 3114
EXAR SPARTAN 6225
OSU EMPRESS 7165

BW	WW	YW	MILK	TM
2.6	54	92	27	54



PREMIER HASSON EMPRESS 714

3A

PACKAGE OF THREE (3) EMBRYOS

MICH Wheatland Hicaliber 7197E x Premier Hasson Empress 714

EXAR CLASSEN 1422B	DAMERON FIRST CLASS
MICH WHEATLAND HICALIBER 7197E 2014219	EXAR PRINCESS 2006
EXAR HIGHROSE 84026	EXAR PIT BOSS 409
	CURTIS HIGHROSE 807
	O C C LEGEND 616L
B C LOOKOUT 7024	GIBBET HILL MIGNONNE E37
PREMIER HASSON EMPRESS 714 2070161	DAMERON FIRST IMPRESSION
OSU EMPRESS 3100	OSU EMPRESS 0135

PE	BW	WW	YW	MILK	TM
	2.5	52	84	25	51



MICH Wheatland Hicaliber
Sire



La Juanita SMX Bombazo 6029
Sire

3B&3C

PACKAGE OF EMBRYOS

La Juanita SMX Bombazo 6029 x Premier Hasson Empress 714

RUBETA 4980 BOMBAZO	O C C HEADLINER 661H
LA JUANITA SMX BOMBAZO 6029 2053226	RUBETA 3414 BOMBA
CLM 0277 FREEDOM T/E	TC FREEDOM 104
	SURENA 478 QUEN EBONETTE XPL
B C LOOKOUT 7024	O C C LEGEND 616L
PREMIER HASSON EMPRESS 714 2070161	GIBBET HILL MIGNONNE E37
OSU EMPRESS 3100	DAMERON FIRST IMPRESSION
	OSU EMPRESS 0135

PE	BW	WW	YW	MILK	TM
	2.8	51	80	19	44

Lot 3B - Package of Three (3) Embryos

Lot 3C - Package of Three (3) Embryos

Empress 714 is logically the next step in the progression of the base laid out by OSU Empress 3100. This female was a feature in last year's sale and sold to the good new family of Mike Portena at Windulan Cattle Company. When it came time to flush this female, MICH Wheatland Hicaliber was the obvious first choice. We feel that HiCaliber will compliment 714E in many ways. He is extremely long sided, hard topped and transitions so good from his shoulder into his forerib. He is big footed and has ample bone. Combining that with the stoutness and bold sprung rib shape of the donor dam, this proves to be a very exciting mating

As we work at continually trying to improve our cow herd, we are always looking for different pedigrees and feel very confident that one does not have to always jump on the band wagon, so to say, of the latest craze or be a follower. When I first seen the picture of Bombazo he really intrigued me with his sheer volume and muscle mass. After doing a little research, we came to find out he was an embryo purchase made by Semex from Argentina, this helped to explain the volume and muscle. The Argentinian cattle have been known to have more power and thickness than many North American bred cattle, is what we hear from some of the best cattlemen and women who have gone to Palermo to see the great exhibit of Angus cattle. If you can think outside the traditional box this could prove to be a very exciting opportunity.

CONSIGNED BY PREMIER LIVESTOCK & LLB ANGUS



PREMIER FUSION 809F

4A&4B

**PACKAGES OF SEMEN
PREMIER FUSION 809F**

PLS 809F 2026377 JAN. 12, 2018

S A V BRILLIANCE 8077	S A V BISMARCK 5682			
DAMERON FIRST IMPRESSION 1703166	S A V BLACKCAP MAY 5270			
DAMERON NORTHERN MISS 3114	DAMERON P V F RAPTOR 702			
	DAMERON MISS 550			
BRUIN UPROAR 0070	SITZ UPWARD 307R			
PREMIER GEORGINA 421	FALCON BLACKBIRD 6071			
QVS GEORGINA 0051	N BAR EMULATION EXT			
	C Q S GEORGINA 051			
BW	WW	YW	MILK	TM
1.4	48	86	25	49

Lot 4A - 10 Packages of Ten (10) Units of Semen

Lot 4B - 5 Packages of Five (5) Units of Semen

Fusion was the feature bull calf of Falls View 2018 where 2/3 interest sold to the great herd of LLB in Erskine, Alberta. We thought so highly of this calf we ventured off to the National Western Stock Show with him where he was named Reserve Champion Bull Calf at the Super Bowl of Cattle Exhibition. If you like this guy last year as a calf, you'll like him even more this year. He was analyzed throughout the year by many of the most astute breeders within the business and the comments were pretty unanimous. He is chucked full of red meat, really sound down at the ground, bold ribbed, big bodied and has a herd bull presence were all phrases used to describe him. Fusion will play a very important part of the future here at Premier and we anxiously await the arrival of his calves this spring. This will be the only semen offered on Fusion in 2020.

CONSIGNED BY PREMIER LIVESTOCK

Rare Semen Opportunity!



**10 UNITS OF SEXED SEMEN
S A V BISMARCK 5682**

IMP 5682R 1369591 FEB. 1, 2005

4C



**10 UNITS OF SEXED SEMEN
S A V 004 DENSITY 4336**

4336 AAA14725035 MAR. 25, 2004

4D



**20 UNITS OF SEXED SEMEN
S A V RESOURCE 1441**

IMP 1441Y 1707295 JAN. 7, 2011

4E



PREMIER GEORGINA 421



PLS 904G
Daughter



PLS 421B
2019 Royal Champion Heifer Calf

5

**OFFERING THE RIGHT TO FLUSH
PREMIER GEORGINA 421**

PLS 421B 2026371 MAR. 26, 2014

SITZ UPWARD 307R
BRUIN UPROAR 0070 1730445
FALCON BLACKBIRD 6071

N BAR EMULATION EXT
QVS GEORGINA 0051 2004467
C Q S GEORGINA 051

CONNEALY ONWARD
SITZ HENRIETTA PRIDE 81M
CONNEALY DATELINE
VERMILION BLACKBIRD 5044
EMULATION N BAR 5522
N BAR PRIMROSE 2424
H S A F BANDO 1961
L L A GEORGINA 05

BW	WW	YW	MILK	TM
2.4	52	94	22	48

Premier Georgina 421 is a female that has proved herself to be a very valuable part of our program. Her production record has propelled her into our donor pen. Her first daughter was a March born heifer calf that was retained in our program and has made a very nice two year old with her first son selling to Eric Stewart. Then she calved in January raising the Premier Fusion bull who was the feature bull calf in Falls View 2018. This year she calved again in January and raised an outstanding heifer calf that was purchased by Windulan Cattle Company and that calf went on to be Senior Heifer Calf Champion of the 2019 National Angus Show. 421 is a Bruin Uproar daughter out of an EXT cow and then goes back to a maternal sister to the infamous, Champion Hill Georgina 419, who has written more success stories than any cow ever in the history of the Champion Hill program. Here is an opportunity to mate a no miss, no nonsense cow to the bull of your choice and start your own branch of the Georgina family.



Premier Fusion 809F
Service Sire



LOT 6

BW: 90 lbs.

Here's one that comes right out off the top of the replacement pen. Rosebud is a very long sided, deep bodied female with tremendous width. Her dam is coming in with her eighth calf and still looks like a four-year-old. She's very nice uddered and has great feet and legs, which are all traits that lend to her longevity. She is sired by Colburn Primo who adds a degree of wow factor to all his progeny, which has made him premier ROV sire in the US. You won't have to wait long to clip a coupon with this one. She is due January 1, 2020 to Premier Fusion (Lot 4).

AI bred to Premier Fusion 809F on March 25, 2019.

6

PREMIER **ROSEBUD** 801

PLS 801F 2052878 JAN. 1, 2018

DAMERON FIRST CLASS
COLBURN PRIMO 5153 1952445
SILVEIRAS SARAS DREAM 1339

LIMESTONE BLU RAY W661
SOUTHLAND ROSEBUD 2Y 1631531
SOUTHLAND ROSEBUD 165W

EXG RS FIRST RATE S903 R3
DAMERON NORTHERN MISS 3114
SILVEIRAS STYLE 9303
EXG SARAS DREAM S609 R3
BC 7022 RAVEN 7965
C&H EVER ENTENSE 4036
MF DESTROYER 093
SOUTHLAND ROSEBUD 81T

BW	WW	YW	MILK	TM
4.1	58	97	15	44



IRCC

LOT 7A



PFLC Bardetta 4A
Dam

7A

PREMIER PR **BARDETTA** 826F

PLS 826F APPLIED FOR MAR. 3, 2018

DAMERON FIRST CLASS
COLBURN PRIMO 5153 1952445
SILVEIRAS SARAS DREAM 1339

S A V FIRST CLASS 0207
PFLC BARDETTA 4A 1781858
LEGEND LANE BARDETTA 824U

EXG RS FIRST RATE S903 R3
DAMERON NORTHERN MISS 3114
SILVEIRAS STYLE 9303
EXG SARAS DREAM S609 R3
S A V NET WORTH 4200
S A V DUKE GIRL 7348
LEGEND LANE REVOLUTION 505
PRIME TIME'S 31H BARDETTA 549

PE	BW	WW	YW	MILK	TM
	3.1	51	86	22	47

Here is one that is super cool made. She is tremendously big boned, wide pinned, long sided, big bodied and if you like them giraffe necked, better look close. 826F hails from a cow that needs no introduction, Bardetta 4A has become a household name in the Angus breed. This is largely due to making the kind of females that go and make productive, profitable cattle. There are several daughters working throughout the breed at herds such as Six Mile Angus, Karalisha Angus, Fallis Land and Cattle, Worth-Mor Cattle, Loyal Farms and Gilchrist Farms. Some of the notable sons from this cow family have been sale toppers and are working at herds such as Ramrod Cattle Co. and Mainstream Genetics. Here is a Primo daughter out of a great maternal pedigree with a world of future. Due early February 2020, carrying a heifer Insight baby.

AI bred to female sexed, PVF Insight 0129 on April 24, 2019.



PFLC Bardetta 4A
Dam



LOT 7B

Premier Bardetta 817F has garnered a lot of attention this past summer by visitors to the farm. She is a moderate framed female when you describe her in terms of stature, but quite the contrary if your describing her in terms of body depth and thickness. This heifer is a nice combination of maternal quality and power, being a direct daughter of Bardetta 4A, she is sure to be great uddered as all the Bardettas are. As an added bonus, she carries a service to Premier Fusion, due mid February.

AI bred to Premier Fusion 809F on May 13, 2019.

7B

PREMIER **BARDETTA** 817F

PLS 817F APPLIED FOR FEB. 27, 2018

S A V REGISTRY 2831
S A V SENSATION 5615 1943126
S A V BLACKCAP MAY 4136

S A V FIRST CLASS 0207
PFLC BARDETTA 4A 1781858
LEGEND LANE BARDETTA 824U

RITO 707 OF IDEAL 3407 7075
S A V MADAME PRIDE 0075
S A V 8180 TRAVELER 004
S A V MAY 2397
S A V NET WORTH 4200
S A V DUKE GIRL 7348
LEGEND LANE REVOLUTION 505
PRIME TIME'S 31H BARDETTA 549

PE	BW	WW	YW	MILK	TM
	2.2	52	95	29	55



LOT 8A



Gibson 7024 Beauty 115B
Dam



Premier BC Beauty 802
Full Sister
\$32,000 High Seller from 2018
Falls View to Dudgeon/Otter Creek

8A

PREMIER GOLD CHIP 913

PLS 913G 2086818 FEB. 2, 2019

DAMERON FIRST CLASS
EXAR BLUE CHIP 1877B 1886429
GREENS PRINCESS 1012

B C LOOKOUT 7024
GIBSON 7024 BEAUTY 115B 1821553
MVF BEAUTY 122W

EXG RS FIRST RATE S903 R3
DAMERON NORTHERN MISS 3114
GREENS PREMIUM 7578
GREENS PRINCESS 7418
O C C LEGEND 616L
GIBBET HILL MIGNONNE E37
S A V NET WORTH 4200
MVF BEAUTY 198S

BW	WW	YW	MILK	TM
4.2	58	95	16	45

BW: 86 lbs.

Every year there is a bull calf that rises above his peers and this year Gold Chip soared to the top of our bull calf crop. Here's a calf that has a world of future. Not only was he our heaviest weaning weight calf phenotypically, he is very correct in his lines, stout made from end to end, he has got a big foot and the ideal set to his leg. His dam is a moderate, easy fleshing cow that flat out works year after year. Gold Chip is a full brother to Premier Beauty 802, who was Senior Heifer Calf Champion and Reserve Champion Female of the 2018 Royal Winter Fair and then went on to be the feature heifer calf of the 2018 Falls View Production Sale, where she was purchased by Dudgeon Cattle Co. along with Otter Creek. We would like to congratulate Owen Dudgeon and the Dudgeon family for doing a great job with Beauty 802. Watch for her next year as a powerful two year old.

Selling 2/3 interest and full possession.

CONSIGED BY PREMIER LIVESTOCK



EXAR Blue Chip 1877B
Sire



GIBSON 7024 BEAUTY 115B



La Juanita SMX Bombazo 6029
Sire

8B

PACKAGE OF FOUR (4) EMBRYOS

EXAR Blue Chip 1877B x Gibson 7024 Beauty 115B

DAMERON FIRST CLASS
EXAR BLUE CHIP 1877B 1886429
GREENS PRINCESS 1012

B C LOOKOUT 7024
GIBSON 7024 BEAUTY 115B 1821553
MV F BEAUTY 122W

EXG RS FIRST RATE S903 R3
DAMERON NORTHERN MISS 3114
GREENS PREMIUM 7578
GREENS PRINCESS 7418
O C C LEGEND 616L
GIBBET HILL MIGNONNE E37
S A V NET WORTH 4200
MV F BEAUTY 198S

PE	BW	WW	YW	MILK	TM
	4.8	59	97	16	46



Premier Gold Chip 913
Full Sibling



Premier BC Beauty 802
Full Sibling

Beauty 115B is a moderate framed, good uddered cow sired by BC Lookout, that just gets it done year after year. She has calved four times and has daughters working at Hasson Livestock, Willdena Farms Dudgeon Livestock/Otter Creek. This year she has raised our top bull calf. The risk is taken out of this mating, these eggs are full siblings to the 2018 Reserve Champion Female who then went on to be the high selling female of Falls View 2018 and the 2019 National Reserve Intermediate Bull Calf. EXAR Blue Chip semen has gotten very rare and hard to find in this country. If you're not a gambler and like cattle that have performance and style, these embryos will fit the bill!

8C

2 PACKAGES OF THREE (3) EMBRYOS

La Juanita SMX Bombazo 6029 x Gibson 7024 Beauty 115B

RUBETA 4980 BOMBAZO
LA JUANITA SMX BOMBAZO 6029 2053226
CLM 0277 FREEDOM T/E

B C LOOKOUT 7024
GIBSON 7024 BEAUTY 115B 1821553
MV F BEAUTY 122W

O C C HEADLINER 661H
RUBETA 3414 BOMBA
TC FREEDOM 104
SURENA 478 QUEN EBONETTE XPL
O C C LEGEND 616L
GIBBET HILL MIGNONNE E37
S A V NET WORTH 4200
MV F BEAUTY 198S

PE	BW	WW	YW	MILK	TM
	4.2	51	82	15	41

This is a mating that we are very excited about and are anxiously awaiting calves later this spring. When we came across the Bombazo bull we went into research mode. After visiting with some folks who had seen the bull as a calf in Manitoba at the recipient farm where he was raised and really admired for his performance, muscle pattern, along with his overall structure. We then reached out to Carlos Olea Rullan from Argentina and he told us about the bull's cow family and how respected and potent they were. It became apparent we needed to use this bull on our best young donors. I think it's pretty safe to say these are the only embryos sired by the Argentinian Bombazo in North America. If you are in the hunt for something different, like so many are, this could be your chance.



PREMIER BC BEAUTY 802

**OFFERING THE RIGHT TO FLUSH
PREMIER BC BEAUTY 802**

9

PLS 802F 2026372 JAN. 2, 2018

DAMERON FIRST CLASS
EXAR BLUE CHIP 1877B 1886429
GREENS PRINCESS 1012

B C LOOKOUT 7024
GIBSON 7024 BEAUTY 115B 1821553
MVF BEAUTY 122W

EXG RS FIRST RATE S903 R3
DAMERON NORTHERN MISS 3114
GREENS PREMIUM 7578
GREENS PRINCESS 7418
O C C LEGEND 616L
GIBBET HILL MIGNONNE E37
S A V NET WORTH 4200
MVF BEAUTY 198S

BW	WW	YW	MILK	TM
5.0	59	97	16	46



**Premier BC Beauty 802
Reserve Grand Champion
Royal Winter Fair 2018**



**Gibson 7024 Beauty 115B
Dam**

Every once in awhile a female comes along that is uniquely different. Premier BC Beauty is one of those females. We watched her grow and develop as a calf last summer and made the easy decision to purchase her when the opportunity arrived.

What puts her in a league of her own is her width of top, dimension, and volume. The broody look, performance and udder that are forming are unparalleled. She is the kind of female that will raise herd bulls and donor females. In terms of quality, the Angus breed keeps moving the bar higher and this female is where it is at! This different pedigree will add a real flare as well.

Guaranteed six (6) embryos, flush to be conducted at our facility in early spring.

CONSIGNED BY BLAIRS.AG CATTLE COMPANY



DAUGHTERS OF S A V MADAM PRIDE 0151



DWS BC FOREVER LADY 986
- DAUGHTERS OFFERED



DLS MISS RACHEL 186 - DAUGHTER OFFERED



BAR E-L ERICA 74A
- MULTIPLE DAUGHTERS OFFERED



MULTIPLE FULL SIBLINGS



MISS INSTINCT 0065 - DAUGHTERS OFFERED

10

OFFERING PICK OF THE ENTIRE BLAIRS.AG CATTLE COMPANY BLACK ANGUS COW HERD

It is indeed a pleasure to be involved in this proactive sale and we have stepped out to offer something we have never done before. Our Black Angus cowherd is responsible for our evolving bull sale and has been responsible for producing bulls for some of the most progressive cattlemen in North America. We have always focused on the maternal side of our cowherd and we have purchased cattle from some of the most sought after programs in the land. We have also worked to ensure a portion of our cowherd is outcross in pedigree, while maintaining our focus on structure, fleshing ability all while ensuring they are sound to the ground. We are offering the pick of any Black Angus cow on the ranch excluding any partnership relations we have. We will gladly assist you on any selection and go through past history of any cows in which interest you. We have included a few pictures of some of our donor females that have really worked for us. Truly a great opportunity we are excited to offer!

Terms: Half down sale day. Remaining due upon selection by August 15, 2020.

Note: Added bonus make pick by August 15, 2020 choosing any open or Black Angus female in our herd.

CONSIGNED BY LLB ANGUS



11

OFFERING PICK OF THE ENTIRE LLB ANGUS 2020 HEIFER CALF CROP

It is our pleasure to consign to this unique and popular event, held beside one of the seven wonders of the world. We are offering the pick of our entire 2020 heifer calf crop. We are currently breeding over 1300 mother cows, so you can do the math on how many heifer calves you can choose from. Each and every spring we offer the top cut of our open females in our annual bull sale held the second Saturday in March. This coming year will be our 34th Annual Sale. We are letting you beat us to the sort on those sale heifers and then choose any heifer that fits your liking. We have seen many breeders have successful stories with our tattoo and are proud to offer this consignment in this sale with a great bunch of fellow cattle people.

Terms: Half down sale day. Remainder due upon selection by October 15, 2020.



BROOKING COUNTESS 7077



YOUNG DALE DEFIANCE 199F

12A

PACKAGE OF THREE (3) EMBRYOS

Brooking Firebrand 6068 x Brooking Countess 7077

BROOKING BANK NOTE 4040		CONNEALY EARNAN 076E			
BROOKING FIREBRAND 6068 1906246		E A ROSE 918			
BROOKING ANNIE K 390		S A V BEST INTEREST 0136			
		SOO LINE ANNIE K 9165			
		S A V BISMARK 5682			
BAR-E-L NATURAL LAW 52Y		BAR-E-L MAGNOLIA 143K			
BROOKING COUNTESS 7077 1967700		HOOVER DAM			
BROOKING COUNTESS 239		WILLABAR COUNTESS 131R			
PE	BW	WW	YW	MILK	TM
	3.0	56	95	24	52



Brooking Countess 7077



**Brooking Dusty's
Countess 9026**
Full Sibling

12B

PACKAGE OF THREE (3) IVF EMBRYOS

Young Dale Defiance 199F x Brooking Countess 7077

YOUNG DALE HI DEFINITION 185B	PF HOOVER DAM 041				
YOUNG DALE DEFIANCE 199F 2062397	BLACK HAMCO COUNTESS 417T				
YOUNG DALE GRACE 126Z	YOUNG DALE PANARAMA 66T				
	YOUNG DALE GRACE 19T				
	S A V BISMARK 5682				
BAR-E-L NATURAL LAW 52Y	BAR-E-L MAGNOLIA 143K				
BROOKING COUNTESS 7077 1967700	HOOVER DAM				
BROOKING COUNTESS 239	WILLABAR COUNTESS 131R				
PE	BW	WW	YW	MILK	TM
	2.2	55	97	23	50

Not often does an opportunity like this come along to access some of the freshest, most exclusive genetics in the country from one of the most dominant Angus females to surface in the last several years. Take advantage while you can! Countess 7077 is not only one of the most powerfully constructed and most admired Angus females in the country, but she has already proven herself in the real world with the incredible first calf she produced by Firebrand that brought \$53,500 just a handful of weeks ago. She has, not only, already excelled in production, but she had a most successful show career as well. 7077 went undefeated in 2019 and was a five-time champion this year! Her list of wins is impressive...Grand Champion and Supreme Champion at PA EX, Grand Champion and Supreme Champion at Farmfair in Edmonton, Champion First Lady Futurity at Agribition, Grand Champion Female at Agribition, then the icing on the cake with the win in the RBC Supreme at Agribition! This Natural Law daughter is impressive from every angle, as sound made as they come, with massive middle and a huge foot. She is as close to my idea of ideal, as any female I have had the opportunity to own. She will be an anchor for our operation for years to come. 7077 flushed very well for us last spring and we can't wait to see the results. She is due to calve again in early February.

We are offering you a chance to own three (3) full sibling embryos to her impressive, high selling heifer calf that was at her side for all those wins. These exciting embryos by Brooking Firebrand 6068 offer exciting return for their new owner. The Firebrand calves as a group are very impressive. Not a lot needs to be said here, the profitability of this mating has already been established. Step up and enjoy the ride here!

We are also offering you a chance to get in early with the first genetics we are letting go on our impressive new herdsire, Young Dale Defiance 199F. Defiance was one of the real highlights of this past spring sale season and brought a \$110,000 valuation when the smoke cleared sale day. Obviously we think very highly of this bull's potential and he will be a big part of our program over the next few years. He is backed by the Grace 126Z cow who sold recently for a \$96,000 valuation. This bull has impressive cow families and donors stacked throughout his pedigree. I feel this mating of Defiance and Countess 7077 could be the most exciting of the two we have on offer. We are anxiously awaiting his first calves this spring. Defiance has an essentially outcrossed pedigree with incredible, actual performance and an amazing amount of bone, foot and natural muscling that you just don't find everyday. Plus, he's got an incredible look and presence that's hard to deny. Buy with confidence on these, as I think this mating is really going to click!

Guarantee of one (1) 60 day pregnancy on each package.



LOT 13

13

GF PROVEN QUEEN 683G

GFA 683G 2105685 MAR. 1, 2019

EXAR BLUE CHIP 1877B
5T POWER CHIP 4790 1959039
 5T MISS WIX 8002

LEACHMAN SAUGAHATCHEE 3000C
JENSENGREIMAN PROVEN QUEEN83 1959040
 GREIMAN JENSEN PROVEN QUEEN7

DAMERON FIRST CLASS
 GREENS PRINCESS 1012
 B C MATRIX 4132
 CIRCLE OAK MISS WIX 4014
 N BAR EMULATION EXT
 LEACHMAN B C 7100
 DAMERON FIRST CLASS
 PVF ALL PROVEN QUEEN 757

BW	WW	YW	MILK	TM
1.8	50	79	19	44

Here is one that comes with a track record, a proven pedigree and an opportunity to add a breeding piece to your program. Junior Calf Division Champion at the Royal Winter Fair, the only show she was out to this year. The future is bright and the possibilities are endless with this heifer. When you analyse her pedigree with industry greats stacked in the first three generations, Powerchip, Saugahatchee and First Class, then add in the Proven Queen cow family, it's no wonder she has the goods. Ultra attractive, deep sided and massive pinned, this female is as gentle as they come and we look forward to following her success with her new owner.



LOT 14

Lucy 708G is an exciting and powerful donor prospect sired by the \$80,000 feature of the Express Ranches, Basin Angus, Turner Meadow and High Roller Angus herd sire rosters, Monumental 6056B and was produced by Lynden Manor Farm's selection in the 2018 Big Event at Express Ranches, Lucy 34283. The dam of Lucy 708G blends the foundation female sire in the Express Ranches herd sire roster, Consensus 7229 with a direct daughter of the \$4.5 million producer in the 44 Farms, Express Ranches, SandPoint Cattle Company and Fairway Angus donor, Lucy 3829 by the proven Deer Valley Farm and ABS Global RE sire, Complete. Lucy 8012, a three-quarter sister to Lucy 708G was the \$37,500 selection of Sydenstricker Genetics in the 2018 Big Event at Express Ranches. Lucy 708G is a top performance prospect and weighted 986 lbs. on November 1, 2019. Senior Heifer Calf at Armstrong Exhibition in British Columbia.

14

JUSTAMERE LM 6056 **LUCY** 708G

AFA 708G 2115768 JAN. 2, 2019

3F EPIC 4631
EXAR MONUMENTAL 6056B 2113346
FWY 7008 OF C085 4029

CONNEALY CONSENSUS 7229
EXAR LUCY 34283 2106798
EXAR LUCY 4449

VARILEK PRODUCT 2010 04
ZEBO QUEEN 1072
A A R TEN X 7008 S A
FWY RITA C085
CONNEALY CONSENSUS
BLUE LILLY OF CONANGA 16
SUMMITCREST COMPLETE 1P55
BASIN LUCY 3829

BW	WW	YW	MILK	TM
2.0	62	106	31	62



LOT 15

15

CEDARVIEW WINONA 8F

FUL 8F 2040584 JAN. 8, 2018

GAMBLES HOT ROD
SILVEIRAS STYLE 9303 1597753
 SILVEIRAS ELBA 2520

LEACHMAN SAUGAHATCHEE 3000C
CEDARVIEW WINONA 8A 1753870
 CLOVER LANE WINONA

FAMOUS 7001
 CHAMPION HILL LADY 703
 TWIN VALLEY PRECISION E161
 D A R ELBA 55

N BAR EMULATION EXT
 LEACHMAN B C 7100
 DUFF NEW ATTRACTION 6110
 CLOVER LANE TYRA

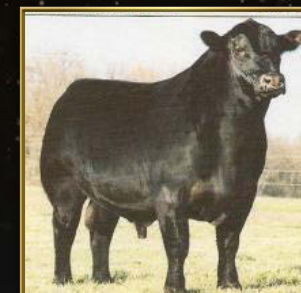
PE	BW	WW	YW	MILK	TM
	3.4	37	66	17	36

Winona has been on top of her game two years running as class winner 2018 and 2019 at the RAWF. Winona has been an exceptional further calf in 2019. She has been top two at every show and in the running for Champion Overall. Bred to sexed Express, due February 23, 2020. Winona's bloodline combines some of the greatest sires in the Angus industry. Silveiras Style 9303 x Saugahatchee x Duff New Attraction 6110 x S A V Net Worth. This heifer has power, strength, bold rib and tracks out on a great set of feet and legs. She grabs everyone's attention in the show ring, both as a young heifer and a yearling. We are excited for the future to see Winona's in production. Endless opportunity, best is yet to come.

AI bred to sexed Conley Express 7211 on May 1, 2019.



Silveiras Style 9303



Leachman Saugahatchee 3000C



Duff New Attraction 6110



S A V Net Worth 4200

CONSIGNED BY BLAIRS.AG CATTLE COMPANY

CANADIAN WESTERN
W AGRIBITION

2019

2019



Red Blair's Baneberry 602F



Red Damar Trump C512
Sire



LOT 16

First Lady
Classic

16

RED BLAIR'S **BANEBERRY** 602F

BBC 602F 2053267 MAR. 8, 2018

We are very excited to share some of the last Baneberry genetics that will ever be for sale. The Baneberry family was a cornerstone at Soo Line Cattle Company and was a feature in their dispersal. We were fortunate to purchase Baneberry 238R with Niobrara in Nebraska, a few years ago and she became a prolific donor for us. The mating with Damar Trump might be her best yet and there have been some great ones in the past. Red Blair's Baneberry 602F exhibits extreme dimension in both her hip and rib. She has a great foot and is very sound. Baneberry was recently named Red Angus Champion in the prestigious First Lady Classic at Canadian Western Agribition. These opportunities don't come available normally, so take this opportunity seriously.

Bred to TWG Tommy Jack 166A on May 24, 2019. Exposed to Red Cockburn Arsenal 8001 (full sibling to Assassin) from June 5 to July 15, 2019.

RED SOO LINE POWER EYE 161X
RED DAMAR TRUMP C512 1954694
RED DAMAR OH BABY W168

RED CRESCENT CREEK FRCHIEF 75L
RED SOO LINE BANEERRY 5238 1282042
RED SOO MS BANEERRY 3193

RED COCKBURN RIBEYE 308U
RED TR LYNN 301R
RED FINE LINE MULBERRY 26P
RED T-S OLIVIA 706P
RED FORSTER CHIEF 7182ET
RED CRESCENT CREEK DUCHESS 155
RED BASIN SENSATION 702E
RED SIX MILE BANEERRY 362J

BW	WW	YW	MILK	TM
-0.6	31	47	26	41

Angus

CONSIGNED BY SIX MILE RANCH LTD.



RED U6 ALANA 13X

CONSIGNED BY WORTH-MOR CATTLE



BROCKHILL PRIDE 6E

17

PACKAGE OF FOUR (4) EMBRYOS

Red Six Mile John Wick 882E x Red U6 Alana 13X

RED U-2 RECKONING 149A
RED SIX MILE JOHN WICK 882E 1994984
 RED SIX MILE & CO GLORIA 29A
 BLACK WHEEL ODYSSEY 117U
RED U6 ALANA 13X 1557943
 RED U6 ALANA 65T

RED U-2 RECON 192Y
 RED U-2 ANEXA 271Y
 RED 6 MILE FULL THROTTLE 171T
 RED SIX MILE GLORIA 746W
 BLACK WHEEL ODYSSEY 2M
 RED WHEEL BRIDGET 7P
 RED U6 TWENTY X 29P
 RED U6 ALANA 12K

PE	BW	WW	YW	MILK	TM
	1.4	43	82	33	54



Red Six Mile
John Wick 882E
Sire



SIXM 748G
Full Sibling

18

PACKAGE OF FIVE (5) EMBRYOS

MOGCK Entice x Brockhill Pride 6E

SYDGEN ENHANCE
MOGCK ENTICE 2077758
 MOGCK ERICA 2255
 SAC CONVERSATION
BROCKHILL PRIDE 6E 1966315
 BROCKHILL PRIDE 5B

SYDGEN EXCEED 3223
 SYDGEN RITA 2618
 MOGCK SURE SHOT 253
 MOGCK ERICA 2162
 SILVEIRAS CONVERSION 8064
 LAFLINS FARRAH 0250
 PLATTEMERE WEIGH UP K360
 ALCHEMY PRIDE 14W

PE	BW	WW	YW	MILK	TM
	2.1	69	123	27	62



MOGCK Entice
Sire

Qualified for USA, CAN, MEX, AUS, and EU.

Here is a proven Six Mile mating with a full sibling heifer calf, SIXM 748G, (May born) commanding \$17,000 in our recent production sale. Alana 13X is a "CAA Elite" Dam with an unparallel production record that includes the \$115,000 High Caliber and a \$39,000 high selling bred heifer. The mating is to the up and coming sire, John Wick, whose semen is in high demand. His sons will highlight the Six Mile Bull sale.

Guarantee two (2) 90 day pregnancies if implanted by a certified embryologist.

We are very excited to be a part of this exciting event again this year. Two years ago we purchased what we were hoping could be our next foundation female from Brockhill and to our luck we hit a homerun. Pride 6E had a very strong year in the showing in 2018 winning multiple times and ending up with the 2018 Ontario Show Female Of The Year. She calved this spring with a beautiful udder and we couldn't be happier. After our trip to Express Ranches this summer and seeing the MOGCK Entice offspring and all the hype on him down there, we knew this was a mating we had to try. Awesome phenotype for the showing and the highest set of numbers you can find, to go along with it. We are very excited to see the resulting progeny of this spectacular mating and are pleased to offer them in this prestigious event!

Guaranteeing two (2) pregnancies, if implanted by an accredited vet or embryologist.



MUSGRAVE BLACKCAP 834-510



KR LADY MAY 4382

19

PACKAGE OF SIX (6) EMBRYOS

S A V America 8018 x Musgrave Blackcap 834-510

S A V PRESIDENT 6847
S A V AMERICA 8018 AAA19249580
S A V MADAME PRIDE 0075

COLEMAN CHARLO 0256
S A V BLACKCAP MAY 4136
S A F 598 BANDO 5175
S A V MADAME PRIDE 8264
HOOVER DAM
MILL BRAE SA JAUNTY 3079
CONNEALY FINAL PRODUCT
M A BLACKCAP MISSIE 1394-936

MUSGRAVE BOULDER
MUSGRAVE BLACKCAP 834-510 AAA17786861
MCATL BLKCP MISSIE 510-1394



S A V America 8018
Sire

PE	BW	WW	YW	MILK	TM
	1.0	68	117	31	64

S A V America 8018 Carcass EPDs

CW	MARB	RE	FAT	\$M	\$W	\$F	\$G	\$B
66	0.31	0.77	0.011	45	82	97	39	137
3%	80%	20%	50%	95%	4%	15%	70%	35%

Musgrave Blackcap 834-510 Carcass EPDs

CW	MARB	RE	FAT	\$M	\$W	\$F	\$G	\$B
34	0.65	0.56	0.012	45	67	89	53	142
45%	25%	25%	50%	90%	15%	20%	25%	15%

Musgrave Blackcap 834-510 is a direct descendant of the very first Blackcap to come to Canada in 1924. Sam Henderson, my grandfather, went to Illinois in 1924 to the famous Tolan Angus herd and bought Tolan Blackcap for \$8,000 in their production sale. When I had the opportunity to buy Musgrave Blackcap 834-510, it was a no brainer, this picture perfect female was so impressive I just had to buy her! This female weaned off a bull calf at 205 days at 892 lbs., so she is a producer! A cowman's dream! Ok, this mating might be something that history is made out of and the sky is the limit with the mating to S A V America, the \$1,510,000 selling bull in the Schaff Angus Valley sale to Herbster Angus. Many top breeders have seen S A V America and many have said this bull might be the best bull yet raised by S A V.

Qualified for USA, CAN, MEX, AUS, and NZ. Guaranteed 50% conception if buying all six, one pregnancy if buying three (3) embryos.

20

PACKAGE OF SIX (6) EMBRYOS

G A R Drive x KR Lady May 4382

G A R MOMENTUM
G A R DRIVE AAA18301470
MAPLECREST BLACKCAP 3007

G A R PROGRESS
G A R BIG EYE 1770
CONNEALY IN SURE 8524
MAPLECREST BLACKCAP K9283
PINE RIDGE HAMMER S322
WK MISS 6191
KOUPLAS B&B IDENTITY
THOENE TRAVELER 004-563

K R GAVEL 1057
KR LADY MAY 4382 AAA17944639
WK LADY MAY 2347

PE	BW	WW	YW	MILK	TM
	0.6	56	105	35	63

G A R Drive Carcass EPDs

CW	MARB	RE	FAT	\$M	\$W	\$F	\$G	\$B
39	1.55	1.07	0.013	33	61	94	103	198
45%	1%	2%	55%	95%	40%	25%	1%	1%

KR Lady May 4382 Carcass EPDs

CW	MARB	RE	FAT	\$M	\$W	\$F	\$G	\$B
65	0.32	0.62	0.013	44	69	123	38	161
1%	75%	20%	55%	90%	10%	1%	60%	5%

KR Lady May 4382 has made so much history so far with being second high selling cow in the Krebs Ranch Dispersal and a great flushing record also has so many things going for her as a top Donor conformation, fertility, low birth, high growth and a outstanding carcass profile! The mating to G A R Drive is a outstanding mating for people concentrating on carcass merit. G A R Drive has the top scan data in the breed with a impressive marbling score of 11, by actual ultra sound data a 5 score is enough for a AAA carcass so 11 puts G A R Drive way into prime marbling score which puts the bull into the top 1% of the breed for marbling genetics. The real curve bender is G A R Drive has a 17 square inch rib eye at a year of age which put him in the top 2% of the breed for Ribeye EPD. Most of the time you don't get big yield and Rib eye size with high marbling which in the business of breeding genetics that is the curve benders we are all looking for.

IVF Qualified for USA and CAN only. Guaranteed 50% conception if buying all six, one pregnancy if buying three (3) embryos.



G A R Drive
Sire



G A R Drive Daughter
sold for \$40,000 at
Ankony this fall



NORTH PERTH BARBARA 300

CONSIGNED BY MILLER LIVESTOCK

21A - 3 Grade A Exportable Embryos – EXAR Blue Chip 1877B x North Perth Barbara 300

21B - 3 Grade A Exportable Embryos – Colburn Primo 5153 x North Perth Barbara 300

21C - 2 Domestic Embryos – S A V President 6847 x North Perth Barbara 300

21D - 4 Domestic Embryos – Conley Express 7211 x North Perth Barbara 300

Barbara 300 is direct daughter of Density from the foundation 232T donor. The Barbara family is known for exceptional femininity, superb udder quality, notable breed character and overall phenotypic attractiveness. 300 is the epitome of all of the above!

Not only is this donor unique in her own phenotype, but her ability to transmit that phenotype will rival any donor in the breed. Her first natural calf, Barbara 507 has been tearing up the show ring this year, winning Champion or Reserve at five major events, including Reserve at Agribition and a Top 10 at the RBC Challenge.

We are offering four packages of embryos from sires we believe are at the forefront of the industry. Conley Express is rarely found, so pay attention to that mating. Blue Chip and Primo will give that added look with hair and phenotype and President will produce those pound crushing offspring that are extremely marketable. Your choice, we are selling all four. The Barbara cow family is certainly one to invest in.

NORTH PERTH BARBARA 300

RIW 300A 1759421 JAN. 1, 2013

S A V 8180 TRAVELER 004
S A V 004 DENSITY 4336 1266311
S A V MAY 7238

CONNEALY FREIGHTLINER
NORTH PERTH MISS BARB 232T 1391835
NORTH PERTH MISS BARB 23R
F A R KRUGERRAND 410H
KLT MISS BARBARA 23H

SITZ TRAVELER 8180
BOYD FOREVER LADY 8003
LEACHMAN RIGHT TIME
S A R PROSPECTOR MAY 9124
BON VIEW BANDO 598
JOANA ERICA OF CONANGA

BW	WW	YW	MILK	TM
1.2	43	75	24	46



North Perth Barbara 507
Reserve Grand Champion Female
Black Angus
Daughter to Barbara 300



EXAR Blue Chip 1877B



Colburn Primo 5153

21A EXAR BLUE CHIP 1877B

IMP 1877Y 1886429 AUG. 4, 2011

DAMERON FIRST CLASS
EXAR BLUE CHIP 1877B 1886429
GREENS PRINCESS 1012

EXG RS FIRST RATE S903 R3
DAMERON NORTHERN MISS 3114
GREENS PREMIUM 7578
GREENS PRINCESS 7418

PE	BW	WW	YW	MILK	TM
	3.3	56	92	19	48

21C S A V PRESIDENT 6847

IMP 6847D 2022643 JAN. 10, 2016

COLEMAN CHARLO 0256
S A V PRESIDENT 6847 2022643
S A V BLACKCAP MAY 4136

O C C PAXTON 730P
BOHI ABIGALE 6014
S A V 8180 TRAVELER 004
S A V MAY 2397

PE	BW	WW	YW	MILK	TM
	2.0	61	105	26	57



S A V President 6847

21B COLBURN PRIMO 5153

IMP 5153C 1952445 JAN. 3, 2015

DAMERON FIRST CLASS
COLBURN PRIMO 5153 1952445
SILVEIRAS SARAS DREAM 1339

EXG RS FIRST RATE S903 R3
DAMERON NORTHERN MISS 3114
SILVEIRAS STYLE 9303
EXG SARAS DREAM S609 R3

PE	BW	WW	YW	MILK	TM
	2.5	49	82	16	41

21D CONLEY EXPRESS 7211

7211 AAA18941522 MAR. 27, 2017

SMA WATCHOUT 482
CONLEY EXPRESS 7211 AAA18941522
DPL SANDY 3040

SILVEIRAS WATCHOUT 0514
2K BEAUTY 961
SILVEIRAS STYLE 9303
K N C CABIN CREEK SANDY 804

PE	BW	WW	YW	MILK	TM
	2.3	52	87	21	24



Conley Express 7211



Young Dale Defiance 199F



Young Dale Believe 46B



Young Dale Dialed Up 138D



YOUNG DALE GRACE 126Z

Opportunity knocks! We are offering one of the best opportunities, a flush on Young Dale Grace 126Z to the bull of your choice. A successful flush will consist of six (6) #1 Embryos. With her proven track record there is no doubt in my mind that the offering of an entire flush is an opportunity of astronomical proportion. Her biggest flush to date is 19 eggs.

Young Dale Grace 126Z needs no introduction. Her sire is Young Dale Panarama 66T, who is a full brother to Young Dale Pollyanna 60T, who is the dam of Young Dale Xclusive 25X, who is the sire of U2 Erelite 109Z, where the hammer fell at \$140,000 in the U2 Dispersal. Young Dale Xclusive made a huge impact on the great offering of sale cattle for U2 Ranch.

Young Dale Grace 126Z is a never miss female, as her sons have sold for an incredible average of just over \$90,000 on four bulls. Young Dale Believe 46B sold for \$146,000 to Richmond Ranch, Young Dale Dialed Up sold for \$46,000 for half interest to Cow Trax, Young Dale Defiance 199F sold for \$55,000 for half interest to Dusty Rose Cattle Co. and Double D Farms and Young Dale Flavor sold for \$8,200 for half interest to Jay Jans.

To top her production record to date, Young Dale Grace 126Z sold to Angus Valley Farms, Mr. Bruce McRae, for \$48,000 for half interest in our female sale last fall.

We feel Grace is the most prolific cow in the history at Young Dale Angus.

22

**OFFERING THE RIGHT TO FLUSH
YOUNG DALE GRACE 126Z**

YDF 126Z 1675938 MAR. 18, 2012

S A V NET WORTH 4200
YOUNG DALE PANARAMA 66T 1404669
YOUNG DALE POLLYANNA 22P

BUFFALOS CONCLUSIVE BN46
YOUNG DALE GRACE 19T 1393769
YOUNG DALE GRACE 1R

S A V 8180 TRAVELER 004
S A V MAY 2410
YOUNG DALE CASINO 67M
YOUNG DALE POLLYANNA 18M
HYLINE RIGHT TIME 338
BUFFALOS HAZEL BN41
YOUNG DALE TOUCH DOWN 36M
YOUNG DALE GRACE 4G

BW	WW	YW	MILK	TM
2.2	55	82	24	52



IRCC

LOT 23A

23A

JAYMARANDY GRACE 912G

JLMA 912G 2112488 FEB. 17, 2019

DAMERON FIRST CLASS
COLBURN PRIMO 5153 1952445
SILVEIRAS SARAS DREAM 1339

YOUNG DALE PANARAMA 66T
YOUNG DALE GRACE 107W 1515554
YOUNG DALE GRACE 14P

EXG RS FIRST RATE S903 R3
DAMERON NORTHERN MISS 3114
SILVEIRAS STYLE 9303
EXG SARAS DREAM S609 R3
S A V NET WORTH 4200
YOUNG DALE POLLYANNA 22P
YOUNG DALE TOUCH DOWN 36M
YOUNG DALE GRACE 27J

BW	WW	YW	MILK	TM
3.0	46	75	13	36

BW: 78 lbs.

Our good Graces offering wouldn't be complete if there wasn't a live offering. When Ben asked if we would part with one of our two Primo x Young Dale Grace 107W open heifers for the Falls View Sale, we had to hesitate, as the old cow died on us and we know her daughters flat out produce. Grace 107W had a way to transfer quality into any calf, her nickname at our place was "The Great Legitimzer." No matter what she was put on for a bull, she always produced a top end calf. She was a truly relevant cow with \$55,000 value produced in her short four year stint with us. Jaymarandy Specialist at \$11,000 to Mantei Angus and Young Dale Grace 169B at a \$32,000 valuation. Her daughters in this flush are as phenotypically spot on as it gets. Do you want muscle, flashy ring presence and great structure? Want big bellied, big ribbed, brood cow quality with great hair? Want fertility? Grace 107W gave us 25 transferrable embryos the only time we flushed her. If those traits, formed together into an extremely beautiful package interests you, then you will want one of our good Graces. Individually, Grace 912G is a truly grand specimen. Factor in the cow family and it's hard to offer up more.



JAYMARANDY GRACE JLMA 640D

CHOICE
OF
FLUSH



YOUNG DALE GRACE 169B

23B

OFFERING THE RIGHT TO FLUSH
JAYMARANDY GRACE JLMA 640D

JLMA 640D 1896568 FEB. 10, 2016

EXAR UPWARD 1728B
JUSTAMERE 1728 MAXIMUM 430A 1755747
JUSTAMERE S036 MABLE 935W
PF HOOVER DAM 041
YOUNG DALE GRACE 169B 1791774
YOUNG DALE GRACE 107W
SITZ UPWARD 307R
EXAR BLACKCAP 7784
EXG LUTTON S036 R3
A CROSS MABLE A600
HOOVER DAM
P F QUEEN MOTHER 446
YOUNG DALE PANARAMA 66T
YOUNG DALE GRACE 14P

BW	WW	YW	MILK	TM
0.3	46	80	25	48



640D & 169B as a pair

23C

OFFERING THE RIGHT TO FLUSH
YOUNG DALE GRACE 169B

YDF 169B 1791774 APR. 20, 2014

HOOVER DAM
PF HOOVER DAM 041 1642082
P F QUEEN MOTHER 446
SYDGEN C C & 7
ERICA OF ELLSTON C124
TC FREEDOM 104
BT QUEEN MOTHER 74J
S A V NET WORTH 4200
YOUNG DALE POLLYANNA 22P
YOUNG DALE TOUCH DOWN 36M
YOUNG DALE GRACE 27J
YOUNG DALE PANARAMA 66T
YOUNG DALE GRACE 107W 1515554
YOUNG DALE GRACE 14P

BW	WW	YW	MILK	TM
-0.9	33	58	28	45

"She is the ideal Angus female and her calf is made just the same" – Chad Ellingson, Ellingson's Angus, Canadian Western Agribition 2016. Grace 169B and Grace 640D as the Champion Black Angus Two Year Old Females as a pair. During this personal communication with the proprietor, one of America's top Angus Seedstock producers, as with those received by many others, it reaffirms what we have felt all along, these are two ideal Angus females. They are both phenotypically hard to fault and have a ring presence that is undeniable.

Grace 169B has been our go to for production and is a highly fertile cow producing an average nine #1 embryos for her first five flushes, yielding over \$75,000 value of receipts in her first four years of frozen genetics and live calf sales. Her first calf is Grace 640D, who remained at Jaymarandy Livestock as a donor and had an inaugural flush with 17 transferrable embryos with zero degenerates. Grace 640D has two sons by Bank Note that are part of our CWA Pen of Bulls. The third bull being an ET son of Grace 169B. If you want high end consistency, they deliver it. Grace 640D and her son, Jaymarandy True North 902G, showed all summer long with their only loss coming from the now great North Perth Barbara 507 for Merit Ranches. Take away the show ring momentarily and speak of actual production. Both females have produced natural calves and ET calves that are out of superior or inferior quality recipis, that still find their way to the top of the respective pens for phenotype, performance, hair quality and the soundness categories of foot structure, bone size and joint angles.

This is the last time we will put frozen offerings up for offer on both of these females as we return to a bit more of a natural production state on both cows after 2020. Call this a one off. It will all be live calf offerings from here out as we are utilizing their genetics to solidify our place in the Angus breed.

They both display the ability to get the job done. Take advantage and flush the mother or the daughter. Or double your money and do them both. Our good Graces can be your good Graces.

Offering right to flush on choice or double the money and flush both cows.

Guarantee of six (6) transferrable embryos with a guarantee of two (2), 90 day pregnancies per cow. No cap.

Flushing to take place at Bow Valley Genetics in March 2020. Conventional or IVF available.



GF EVENING TINGE 204A



R&R Transformer 102
Maternal Brother



GF Soal 8001D
Full Brother



GF Evening Tinge 17Y
Full Sister

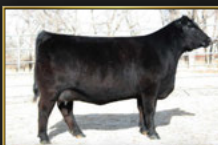
24 FOUR (4) SEXED FEMALE IVF EMBRYOS
Bar-E-L Natural Law 52Y x GF Evening Tinge 204A

S A V BISMARCK 5682
BAR-E-L NATURAL LAW 52Y 1629829
BAR-E-L MAGNOLIA 143K

N BAR EMULATION EXT
GF EVENING TINGE 204A 1750644
JL EVENING TINGE 8001

G A R GRID MAKER
S A V ABIGALE 0451
BAR-E-L MCC 365 ICON 20H
DOUBLE FOUR DUCHESS 12G
EMULATION N BAR 5522
N BAR PRIMROSE 2424
JUSTAMERE 253 BADA BING 406S
HF EVENING TINGE 57R

PE	BW	WW	YW	MILK	TM
	2.2	51	91	25	50



JL Evening Tinge 1270
Full sister to dam



JL Evening Tinge 8001
Dam of GF Evening Tinge 204A



Produced by a maternal sister
GF Evening Tinge 1X



Produced by a maternal sister
GF Evening Tinge 1X

Phenotypically one of the most complete Evening Tinges that has been produced to date. From the very beginning, this female has stood out. As a heifer calf she was Intermediate Calf Champion at the Royal Winter Fair. As she has matured, she has developed into an outstanding cow with an exceptional udder. These embryos are sired by one of the hottest bulls available, Bar-E-L Natural Law 52Y, who's progeny have been demanding top prices and chasing banners across the country



GF JENA 905E

25 OFFERING THE RIGHT TO FLUSH
GF JENA 905E
GFA 905E 1988391 JAN. 5, 2017

CONNEALY PRODUCT 568
CONNEALY FINAL PRODUCT 1643843
EBONISTA OF CONANGA 471

C&C MC INTOSH 2038
GF JENA 905C 1850266
GF JENNA 905Z

G A R RETAIL PRODUCT
PRIDE FINE OF CONANGA 566
CONNEALY DEEP CANYON 454
EBONISA OF CONANGA 5469
DAMERON FIRST CLASS
RAC WINNIE 7456
PEAK DOT RESOLUTE 37W
BRIDGEHAVEN JENA 5W

BW	WW	YW	MILK	TM
2.7	77	133	28	67



GF Lucknow 905G
Son of Jenna



GF Lucknow 905G
Rear
Son of Jenna

Structural integrity and unprecedented performance in a moderate birth weight, this young female does it all. As a two year old this female raised the \$40,000 GF Lucknow 905G, who was purchased by Karalisha Cattle. Not only did she raise this massive, high performance bull but she was also flushed successfully and bred back to calve in the same calving interval for 2020. If you are looking to add proven, predictable, performance genetics to your herd check this one out.

You pick the sire and we guarantee six (6) IVF embryos. Buyer will receive the first 10 embryos with the remaining embryos split 50/50 with Gilchrist Farms.

CONSIGNED BY LYNDEN MANOR FARM



EF LADY 7115

26

PACKAGE OF FOUR (4) EMBRYOS

MOGCK Entice x EF Lady 7115

SYDGEN ENHANCE		SYDGEN EXCEED 3223			
MOGCK ENTICE 2077758		SYDGEN RITA 2618			
MOGCK ERICA 2255		MOGCK SURE SHOT 253			
		MOGCK ERICA 2162			
EXAR STUD 4658B		A A R TEN X 7008 S A			
EF LADY 7115 2113470		BOBO RITA 1559			
KLR LADY 3369		SITZ UPWARD 307R			
		KLR LADY 1489			
PE	BW	WW	YW	MILK	TM
	2.2	74	136	32	69



MOGCK Entice
Sire

Featuring embryos from the featured donor in the Lynden Manor Farm program, Lady 7115, sired by the popular son of the \$C leader Enhance in the Select Sires roster, Entice. Lady 7115, the donor dam of these outstanding embryos, blends the proven low birth and marbling leader of the Express Ranches, Sydenstricker Genetics and Basin Angus herd sire lineups, Stud 4658B. Also stems from a dam who combines the proven growth and CW leader, Upward and the maternal leader of the 44 Farms and Select Sires' rosters, War Party and stems from the featured Pathfinder dam, Lady 9015 3313 Krebs Ranch performance program. We would like to thank the Peter Frijters family for letting us be apart of this great event.

Guarantee of two (2) pregnancies if implanted by a certified technician.

CONSIGNED BY REHORST FARMS LTD.



MICH WHEATLAND HICALIBER 7197E

27

PACKAGE OF FIVE (5) EMBRYOS

MICH Wheatland Hicaliber 7197E x JL June1070

EXAR CLASSEN 1422B			DAMERON FIRST CLASS		
MICH WHEATLAND HICALIBER 7197E 2014219			EXAR PRINCESS 2006		
EXAR HIGHROSE 84026			EXAR PIT BOSS 409		
			CURTIS HIGHROSE 807		
SITZ UPWARD 307R			CONNEALY ONWARD		
JL JUNE 1070 1610664			SITZ HENRIETTA PRIDE 81M		
JL JUNE 06 40			BOYD NEW DAY 8005		
			JUNE OF PEAK DOT 813P		
PE	BW	WW	YW	MILK	TM
	3.3	61	107	30	60



Rehorst Eliminator June 502C
\$30,000 daughter at Strongbow



RHFL 613D - \$14,000 daughter at Johnson Livestock



525C
\$13,000 daughter at Neilsen Land & Cattle



534C
\$15,000 daughter at Otter Creek

June 70Y has become the anchor here at RHF. Her producing abilities have been outstanding, her disposition is second to none and her track record through public auction is substantial. As you can see through the support pictures listed, she has become a factory for producing outstanding daughters. We currently have four active daughters at the front of our herd as well she has four active sons in use. She posts a phenomenal EPD evaluation and is very neat and tidy made. Furthermore, she has 21 active daughters and sons listed in the CAA herdbook and that will only continue to grow. Mated to the Supreme Champion only adds value. Hicaliber has the muscle shape and design we strive for and anxiously await his calves at the farm.

Guarantee of two (2) pregnancies if implanted by a certified technician.

CONSIGNED BY J SQUARE S ANGUS



J SQUARE S ELLEN 335A

CONSIGNED BY STRONGBOW FARMS LTD.



S A V BLACKCAP MAY 2562

28

2 PACKAGES OF THREE (3) EMBRYOS

HF Alcatraz 60F x J Square S Ellen 335A

MAY-WAY BREAKOUT 1310
HF ALCATRAZ 60F 2043806
HF MAYFLOWER 191Z

TC FREEDOM 104
J SQUARE S ELLEN 335A 1771946
MVF ELLEN 26N

AVF BREAKOUT 5409
MAY-WAY LADY BANDO 086
HF TIGER 5T
HF MAYFLOWER 78P
CONNEALY FOREFRONT
T C RUBY 9095
GDAR SVF TRAVELER 234D
MVF ELLEN 111J

PE	BW	WW	YW	MILK	TM
	2.7	50	89	27	52



HF Alcatraz 60F
Sire of embryos



JS 506C - Maternal
Daughter sold to
Belvin Angus



Maternal Daughter
- Sold to Nolan Glover



Full sister to 335A

We are very excited to bring you this elite genetic opportunity combining a bullet proof donor cow and the extremely exciting, HF Alcatraz. The Ellen cow family has been very popular at J Square S Angus. Ellen 335A is the result of an embryo that we purchased from the famous MVF herd. Daughters of 335A have been very popular in past sales, selling to Belvin Angus and Nolan Glover. The mating to HF Alcatraz, who was one of the most talked about bulls north and south of the border this spring, makes this combination a can't miss opportunity.

Stored at Bow Valley Genetics.

29

PACKAGE OF FOUR (4) EMBRYOS

S A V President 6847 x S A V Blackcap May 2562

COLEMAN CHARLO 0256
S A V PRESIDENT 6847 2022643
S A V BLACKCAP MAY 4136

S A V IRON MOUNTAIN 8066
S A V BLACKCAP MAY 2562 1825213
S A V MAY 2397

O C C FOCUS 813F
O C C BLACKBIRD 736K
SITZ TRAVELER 8180
S A V ABIGALE 6062
TC GRIDIRON 258
S A V MADAME PRIDE 3249
S A F 598 BANDO 5175
S A V MAY 7238

PE	BW	WW	YW	MILK	TM
	3.6	71	122	26	61



S A V President 6847
Sire

This frozen genetic lot represents a unique opportunity to buy into one of the most influential cow families in the Angus business. The donor dam is a maternal sister to the legendary \$9M producing S A V Blackcap May 4136 and the embryo sire is also the sire of the \$1.5M S A V America 8018. If the lineage of this mating wasn't enough to convince you of the performance potential, check out the EPD profile boasting a predicted yearling weight of 122.

Guaranteeing two (2) pregnancies.



Conley South Point 8362



CONLEY SOUTH POINT 8362

Here is your final chance before the 2020 spring breeding season to acquire semen off the reigning Agribition Champion bull and RBC Supreme Top 10 finalist, Conley South Point 8362.

South Point has been admired for his structural soundness combined with exceptional phenotype and mass. While he can certainly be used in the heifer pen, you may want to flush your top donors to this impressive son of Turning Point. His dam is a top donor at Conley Angus producing many sale features and high sellers in both their female and bull sales.

South Point is an ideal outcross to Primo, Style & Insight females.

After an extremely competitive fall run, South Point is headed to NWSS in January where his popularity is sure to increase even further.

**4 PACKAGES OF FIVE (5) UNITS OF SEMEN
CONLEY SOUTH POINT 8362**

30

IMP 8362F 2099027 MAR. 13, 2018

PLATTEMERE WEIGH UP K360
STEVENSON TURNING POINT 1977035
STEVENSON PRIDE 1167X

S A V NET WORTH 4200
P R LADY 909 4200-587 US16676486
P R 587 205-537

SITZ UPWARD 307R
BARBARA OF PLATTEMERE 337
S A V BISMARCK 5682
FSHK PRIDE 180
S A V 8180 TRAVELER 004
S A V MAY 2410
B A R EXT TRAVELER 205
P R 537 380-398

BW	WW	YW	MILK	TM
-0.6	58	97	25	54



LOT 31A



Brendale Premier Digger 106G
2019 Royal Winter Fair

31A

BRENDAL PREMIER **DIGGER** 106G

TGPH 106G PC03059421 JAN. 6, 2019

OTAPAWA SKYMATE 2046 (ET) DLF HYF IEF	SKY 236G PREMIER 132K			
RSKE2046DIGBYET20CPC03011213 DLF HYF IEF MSUDF	OTAPAWA LEONORA P23			
HARVIE MISS FIREFLY 51F DLF HYF IEF	HARVIE DEYNOTE 61D			
	HARVIE MISS NYLON 1Y			
CRR 109 OLD SCHOOL 301 DLF HYF IEF	CRR 719 CATAPULT 109 DLF HYF IEF			
BRENDALE PREMIER 301 ROXY 212D PC03021714	CRR 435 KELLY 178 DLF HYF IEF			
EARLYBIRD 966R 23X ROXY 19Z	KJ 2403 RECRUIT 966R			
	EARLYBIRD RM 7R ROXY 23X			
BW	WW	YW	MILK	TM
3.4	52.5	83.3	24.0	50.3

BW: 80 lbs.

Here's a calf that comes to you with as much future as any. He has been described by many who have appraised him, "wow he is made so good, he will just keep getting better and better as he grows older." This calf is ultra complete, he's big footed, really sound and good on the move, ideal in terms of bone and leg set. He's a deep sided calf with lots of length of side. He has a herd bull look and presence to him which are all things that lead to what we think will be a very bright future.

He is sired by the RSK Digby, the 2017 Agribition Grand Champion Hereford Bull. His dam is a young cow we are very proud of, she herself was campaigned very successfully garnering the title of Supreme Champion Female at the Masterfeeds National Junior Heifer Show.

Selling 1/3 interest with breeding season possession available or in herd semen use, we would like to work with new owners in campaigning Digger in the future.

CONSIGNED BY PREMIER LIVESTOCK & BRENDAL ACRES



Brendale Premier Eldorado 220E
Maternal Brother



BRENDAL PREMIER 301 ROXY 212D

Here is an opportunity to acquire elite Hereford genetics from the 2017 Supreme Female in the Junior Show at the Royal Agricultural Winter Fair, where she was also the Champion Intermediate Yearling in the Open Show. Roxy 212D caught the attention of astute cattlemen from all breeds as a yearling for her depth and sweep of rib, along with her beautiful front end. In 2016, Roxy 212D was Reserve Champion Hereford in the Confirmation Show in the Junior Show, along with Reserve Intermediate Heifer Calf in the Open Show, she's only getting better with age. It all boils down to production when they go back to being cows and on only her second attempt, she raised a future herd bull, a bull you'll see a lot more of because we think that much of him. This outstanding female is also a sibling to last year's Grand and Supreme Champion Bull at the Peterborough Fair, Grand and Supreme Champion Bull at the Barrie Fair and Grand Champion at the Royal Winter Fair. El Dorado sold through this very sale last year and then went on to be awarded the 2018 Ontario Show Bull of the Year. Don't miss out on this exciting flush opportunity to the bull of your choice!

Flush to be done at Premier Livestock. Guaranteeing a minimum of six (6) transferable embryos with two (2) 90 day pregnancies and we split every embryo beyond 10.

OFFERING THE RIGHT TO FLUSH
BRENDAL PREMIER 301 ROXY 212D
TGPH 212D PC03021714 FEB. 12, 2016

CRR 719 CATAPULT 109 DLF HYF IEF
CRR 109 OLD SCHOOL 301 C03015624 DLF HYF IEF
CRR 435 KELLY 178 DLF HYF IEF

KJ 2403 RECRUIT 966R
EARLYBIRD 966R 23X ROXY 19Z PC02968424
EARLYBIRD RM 7R ROXY 23X

TH 122 711 VICTOR 719T DLF HYF IEF
CRR 4037 ECLIPSE 808
DM BR SOONER
CRR D03 KELLY 361

ALLENDAL ROBIN HOOD
MARK DOMETTE MR 2403
JJD RED MILE ET
EARLYBIRD 20K 7K ROXANNE 7R

BW	WW	YW	MILK	TM
1.7	51.0	78.2	27.7	53.2



LOT 32



Haroldson's H United 33D 36G
2019 CWA President's Classic
Champion



Haroldson's H United 33D 36G
2019 CWA Grand Champion Bull

32

HAROLDSON'S H UNITED 33D 36G

AFSY 36G PC03061884 MAR. 5, 2019

SHF TAHOE R117 T100 DLF HYF IEF MSUDF	SHF RIB EYE M326 R117 DLF HYF IEF			
HAROLDSON'S UPGRADE T100 33D PC03024611 DLF HYF IEF MSUDF	SHF LADY 512 L73			
MOHICAN MISSEY 93W DLF HYF IEF	MOHICAN RANGELAND 221R			
	MOHICAN MISSEY 401R ET			
NJW 73SW18 HOMETOWN 10Y ET DLF HYF IEF	SHF WONDER M326 W18 ET DLF HYF IEF			
HAROLDSON'S WLC MIRA ET 52B PC03030599 DLF HYF IEF	NJW P606 72N DAYDREAM 73S DLF HYF IEF			
HAROLDSON'S 37H MIRA ET 62K	REMITALL HOLLYWOOD 37H			
	HAROLDSON'S CU DESTINY 2Z 19G			
BW	WW	YW	MILK	TM
4.1	56.4	93.5	24.9	53.1

BW: 94 lbs.

United is one of the most exciting individuals we have had the opportunity to work with. He is a stout made, huge barrelled bull with that added length of body and extension through his front end. Structurally, this bull excels, he is excellent in his hip structure, very sound off his feet and legs and commands your attention when in motion. United is a good haired individual with that dark colour and great testicle development. His sire, Upgrade, was Junior Champion Bull Calf and one of our high sellers later that spring. His dam is a moderate framed female with a beautiful udder and tremendous milk flow. Mira 62K was the most potent donor on our ranch and produced to the age of 18. United created a stir at CWA and caught the attention of many great cattlemen from all breeds. He is the first Hereford bull calf to win the All Breed Semex President's Cup. He went on to be the 2019 National Champion Bull and is the first Hereford bull calf to make the illustrious RBC Supreme Top 10. On December 28, take advantage of the opportunity to become a part of United's future.

Selling 1/3 interest in the bull along with a select amount of semen packages. The packages are selling on a first come/first serve basis. Contact Chad, Jason or one of the staff for any further details.

CONSIGNED BY MEDONTE HIGHLANDS POLLED HEREFORDS



MHPH 3134 Evolution 117E
Maternal Brother



LOT 33

BW: 82 lbs.

This heifer is unique in quality and pedigree! From the side profile, she is extremely long with a feminine, cowy look. As you view her from behind she exhibits more than enough shape. On paper, she is royally bred with more cow power than most. Her maternal grandmother is a former Canadian National Champion. Her dam is proving to be a genetic gem. 105G will most definitely become a future cow of importance.

33

MHPH 646D **NITA** 105G DLF HYF IEF MSUDF

MHPH 105G PC03058290 JAN. 5, 2019

NJW 98S R117 RIBEYE 88X ET
CHURCHILL ROCK 646D ET PC03043687
SR CCC LADYSPORT 2205 Z ET

NJW 73SW18 HOMETOWN 10Y ET DLF HYF IEF
MHPH 10Y NITA 226B PC02995069 DLF HYF IEF
MHPH MS 68M NITA 1112R DLF HYF IEF

SHF RIB EYE M326 R117 DLF HYF IEF
NJW 9126J DEW DOMINO 98S DLF HYF IEF
THM DURANGO 4037 DLF HYF IEF
NJW BW LADYSPORT DEW 78P ET DLF HYF IEF
SHF WONDER M326 W18 ET DLF HYF IEF
NJW P606 72N DAYDREAM 73S DLF HYF IEF
STAR AMERICA BNMHPH SS MKS 68M DLF HYF IEF
MHPH MS 29F NITA 112L DLF HYF IEF

BW	WW	YW	MILK	TM
5.3	69.5	108.3	29.3	64.1

Hereford



LOT 34

34

ELM-LODGE **GALA** 34G

TAX 34G PC03066306 FEB. 21, 2019

BAR S LHF 028 240
BR BELLE AIR 6011 C03065116
BR BELLE 4082 ET

CC CX UNITED 52S ET DLF HYF IEF
ELM-LODGE WHOLE SHEBANG 56W PC02926316
ELM-LODGE 42W MELVA 28L

CHURCHILL SENSATION 028X DLF HYF IEF
CHURCHILL LADY 078X
GOLDEN-OAK OUTCROSS 18U DLF HYF IEF
BR CSF BRIELLE 8052 ET
REMITALL LAGRD POUNDER ET 204P
SB 122L DOTTIE 109N ET
S&S BASIC 1G
ELM-LODGE CLOUD NINE 42W

BW	WW	YW	MILK	TM
2.9	53.3	87.4	27.8	54.4

BW: 72 lbs.

Unique breeding piece on offer for this unique event. One of only two Belle Air females born in Canada and out of the original cow family that is dangerously close to 50 years of consistent production at Elmlodge. Her dam was actually the Bonanza Champion in 2010 and has since produced a long list of winners and sale toppers. Gala is crisp lined, angled up right, flawless in motion with extra class and style. Her dam transmits her softness, dimension and championship form onto this one to make her truly special.



BR Belle Air 6011
Sire



Elm-Lodge Cleopatra 4C
Sister



JDL Janice 11X 119C
Supreme Champion Female Royal
Agricultural Winter Fair 2017



WORR Owen Tankeray Y79D ET
Sire



LOT 35

BW: 81 lbs.

JDL Janice Y79D 130G is an extremely complete, super long sided, long fronted, attractive made female. 130G is stout made, square hipped, clean in her lines and as sound as they come when put into motion. 130G was shown successfully all fall including being named Reserve Grand Champion Female at Barrie Fair and Heifer Calf Champion at the Ontario Hereford Association Off The Halter Show. Her sire is a past NWSS Reserve National Champion Bull, \$120 000 Mile-High high seller and the 2019 RAWF Sire of the Show. Her dam was the 2017 RAWF Supreme Champion Female. Janice 130G is an awesome numbered female with the quality and look to be a super competitive show heifer and big-time future donor.

35

JDL **JANICE** Y79D 130G

JDL 130G PC03057911 JAN. 30, 2019

NJW FHF 9710 TANK 45P DLF HYF IEF	FHF 8403 STARBUCK 19H
WORROWENTANKERAY Y79D ET PC03044660	GV 579 VICTORIA 9710
BR KLD ROSE MARIE D79 ET	BR MOLER ET DLF IEF
	BR 122L ROSE 4020 ET
TH 71U 719T MR HEREFORD 11X DLF HYF IEF	TH 122 71I VICTOR 719T DLF HYF IEF
JDL JANICE 11X 119C PC03005753	TH 7N 45P RITA 71U DLF HYF IEF
JDL JANICE 743 312Z	CRR ABOUT TIME 743 DLF HYF IEF
	JDL JANICE 303T 210W

BW	WW	YW	MILK	TM
3.4	56.9	91.3	28.9	57.4

CONSIGNED BY HARVIE RANCHING



H Montgomery 7437 ET
Sire



OVHF MS Ronda 60Z



H RW All In 7165 ET
Sire

36A

2 PACKAGES OF THREE (3) EXPORTABLE EMBRYOS

H Montgomery 7437 ET x OVHF Ms Ronda 60Z

UPS SENSATION 2296 ET DLF HYF IEF MSUDF			CHURCHILL SENSATION 028X SOD DLF HYF IEF		
H MONTGOMERY 7437 ET P43799223 DLF HYF IEF MSUDF			UPS JT MISS NEON 7811 1ET DLF HYF IEF		
RST GATNSTY79DLADY 54B ET DLF HYF IEF MSUDF			WORR OWEN TANKERAY Y79D ET DLF HYF IEF MSUDF		
			H H LADY MAXIUM 111 ET DLF HYF IEF		
JDH 10S YANKEE 39X DLF HYF IEF			AH YANKEE 10S		
OVHF MS RONDA 60Z PC02966477 DLF HYF IEF			AH JDH WRANGLER QUEEN 22T ET DLF HYF IEF		
HARVIE MS RONDA 41W DLF HYF IEF			HARVIE TRAVELER 69T DLF HYF IEF		
			HARVIE RONDA 17R DLF HYF IEF		
PE	BW	WW	YW	MILK	TM
	4.9	61.2	99.2	25.1	55.7

36B

2 PACKAGES OF THREE (3) EXPORTABLE EMBRYOS

H RW All In 7165 ET x OVHF Ms Ronda 60Z

JDH JJD 9Y 485T ALL IN 96B ET			KJ HVH 33N REDEEM 485T ET DLF HYF IEF		
H RW ALL IN 7165 ET PC03050475			JDH MS 26U CRACKER JACK 9Y ET		
EXR TERRI 489			MSU TCF REVOLUTION 4R DLF HYF IEF		
			BR TERRI 9130 ET		
JDH 10S YANKEE 39X DLF HYF IEF			AH YANKEE 10S		
OVHF MS RONDA 60Z PC02966477 DLF HYF IEF			AH JDH WRANGLER QUEEN 22T ET DLF HYF IEF		
HARVIE MS RONDA 41W DLF HYF IEF			HARVIE TRAVELER 69T DLF HYF IEF		
			HARVIE Ronda 17R DLF HYF IEF		
PE	BW	WW	YW	MILK	TM
	5.9	65.1	105.7	19.2	51.8

People often ask which female is our top producing donor cow and Ronda 60Z definitely is a strong candidate for this title. She has produced a \$18,000 high selling bull in our annual sale, the 2018 CWA Junior Champion Female, the 2019 Bonanza Bred and Owned Bred Heifer Champion and the Reserve Bred and Owned Bonanza Champion Female. I think her most exciting calf yet is a Truman ET heifer calf off of her this year. We mated her to H Montgomery 7437 on this flush, which is the sire of Hoffman's high selling female in their production sale this fall and H Montgomery was recently named Champion Bull at the American Royal. The show prospect of this mating will prove to be pretty exciting. The other mating is with H RW All In 7165 the 2018 CWA Junior Champion Bull who has left a group of impressive calves for us this year. The All In calves are tremendous, stout and attractive fronted. H RW All In sired the CWA Sr. Bull Calf Champion this year. Both matings are a sure bet!

We are offering a 1 guaranteed pregnancy per pack of 3 on these embryos, if implanted by certified embryologist.



Harvie E Sackett ET 201E
2018 \$18,000 High Selling Bull to
Krogstad Polled Herefords, MN



Harvie OVHF Ms Ronda 64F
Daughter, Bonanza Reserve
Champion Bred & Owned Female



Harvie OVHF Ms Ronda ET 68G
Daughter, Exciting show heifer for
Tinley & Lyla Harvie



Harvie OVHF Ms Ronda 284E
Daughter, 2018 CWA Junior
Champion Female

CONSIGNED BY BLAIRS.AG CATTLE COMPANY & HARVIE RANCHING



NEXT GEN RIESLING 295 ET

37

2 PACKAGES OF THREE (3) EXPORTABLE EMBRYOS

H Montgomery 7437 ET x Next Gen Riesling 295 ET

UPS SENSATION 2296 ET DLF HYF IEF MSUDF		CHURCHILL SENSATION 028X SOD DLF HYF IEF			
H MONTGOMERY 7437 ET P43799223 DLF HYF IEF MSUDF		UPS JT MISS NEON 7811 1ET DLF HYF IEF			
RST GAT NSTY79D LADY 54B ET DLF HYF IEF MSUDF		WORR OWEN TANKERAY Y79D ET DLF HYF IEF MSUDF			
		H H LADY MAXIUM 111 ET DLF HYF IEF			
H/TSR/CHEZ/FULL THROTTLE ET		H WCC/WB 668 WYARNO 9500 ET DLF HYF IEF			
NEXT GEN RIESLING 295 ET PC03018911		R SWEET RED WINE 039			
STAR SPIRIDGE KESSEY 321L ET DLF HYF IEF		STAR SS THUNDER LT 62J			
		SSF KEYSHA 949			
PE	BW	WW	YW	MILK	TM
	4.6	62.5	101.0	30.1	61.4

We are jointly offering a superb combination of the National Junior Champion, Riesling 295 ET and the Kansas City Royal Champion Bull, H Montgomery 7437 ET in this prestigious sale. On the female's side, Riesling 295 ET was the 2016 CWA National Junior Champion and Reserve Champion Bonanza Female, who went on to produce Harvie OVHF Riesling 3F ET, the 2018 Reserve National Champion Female, who recently won 2019 RAWF Reserve Champion Female and the National Junior Beef Heifer Show Champion Hereford Female in Toronto. An equally impressive track record producing the high selling bull at CWA 2018 with Harvie OVHF Empower 5F ET, who was the 2018 Semex President's Classic Champion Hereford and CWA National Senior Bull Champion. Empower 5F ET then went on to be named the 2019 Brandon Ag Ex Champion Hereford Bull this fall. Finally, Harvie OVHF Concept ET 245F, the high selling bull in the Harvie Ranching Annual Bull Sale, was named the 2019 Western National Junior Champion and Reserve Champion Bull at the 2019 Farmfair International. Now, H Montgomery 7437 ET is making a big name for himself, with an impressive group of heifer calves in the Hoffman Ranch Fall Female Sale, where he sired the high selling female. This 2019 Kansas City Royal Champion bull is sound, fault free with mass and depth, which should prove to be a phenomenal cross with Riesling 295 ET. **We are offering a 1 guaranteed pregnancy per pack of 3 on these embryos, if implanted by certified embryologist.**

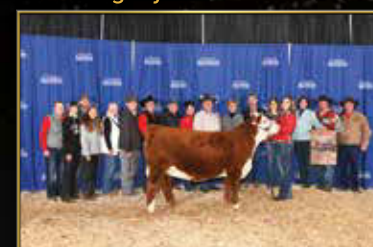


H Montgomery 7437 ET
Sire

Next Gen Riesling 295 ET Progeny



Harvie OVHF Riesling ET 3F
Purchased by Otter Creek, Double H Cattle & Venture Livestock



Harvie OVHF Riesling ET 3F
2018 CWA Reserve Grand Champion Female



Harvie OVHF Empower ET 5F
Purchased by Torchview Livestock & The Empower Syndicate



Harvie OVHF Empower ET 5F
2018 CWA Champion Senior Bull



Harvie OVHF Concept ET 245F
Purchased by Chittick Family Farms



Harvie OVHF Concept ET 245F
2019 Farmfair International Reserve Grand Champion Bull

CONSIGNED BY BLAIR-ATHOL FARMS



GHC MISS DEW ET 13Y

Pictured Dry



TH 13Y 358C BOTTOM LINE 206E

38A

THREE (3) FULLY EXPORTABLE EMBRYOS

KCF Bennett Strategy Z303 ET x GHC Miss Dew ET 13Y

SCHU-LAR ON TARGET 22S	SCHU-LAR 5N OF 9L 3008				
KCF BENNETT STRATEGY Z303 ET PC03004584	SCHU-LAR 208 OF 1H 121 ET				
KCF MISS REVOLUTION X338 ET	MSU TCF REVOLUTION 4R DLF HYF IEF				
	JW 718 VICTORIA 9106				
GHC VOLUME III ET 139S	RU 20X BOULDER 57G DLF HYF IEF				
GHC MISS DEW ET 13Y PC02963999 DLF HYF IEF MSUDF	WALPOLE PHILIS 13F				
GHC MISS NANCY 98P DLF HYF IEF	GHC PREMIER 155K				
	MCCOY 32K SUSIE 11M				
PE	BW	WW	YW	MILK	TM
	3.1	64.7	103.7	25.4	57.8



KCF Bennett Strategy Z303 ET
Sire

13Y has been a solid producer at Blair Athol since she was purchased from the good folks at GHC. 13Y is a full sister to GHC Coalition and she's the mother of our herd sire, Make My Day 30D. If you are looking to add power to your program this mating is a good one. **These embryos are EU qualified. Embryos are currently stored at Bow Valley Genetics. Purchaser is responsible for all costs related to shipping. One 60 day pregnancy guaranteed if implanted by a certified technician.**

38B

THREE (3) FULLY EXPORTABLE EMBRYOS

TH 13Y 358C Bottom Line 206E x Blair-Athol Ribeye Gal 107W

TH 403A 475Z PIONEER 358C ET	TH 89T 755T STOCKMAN 475Z				
TH 13Y 358C BOTTOM LINE 206E PC03061148	TH 71U 17Y RITA 403A				
TH 54W 719T BETH 13Y	TH 122 71I VICTOR 719T DLF HYF IEF				
	TH 6S 45P BETH 54W				
SHF RIB EYE M326 R117 DLF HYF IEF	KCF BENNETT 3008 M326 DLF HYF IEF				
BLAIR-ATHOL RIBEYE GAL 107W PC02933446 DLF HYF IEF MSUDF	HVH MISS HUDSON 83K 8M				
BLAIR-ATHOL WESTERN GAL 78T	BLAIR-ATHOL 13K MAJOR 101N DLF HYF IEF				
	FJELLEBRO 25L APPROVAL 5P				
PE	BW	WW	YW	MILK	TM
	4.9	69.1	116.7	25.5	60.1



Blair-Athol 19M
Chardonnay 93B
Maternal Daughter

206E is the new kid on the block. Weaned off his dam at 990 lbs. and currently the #1 bull in the breed for yearling weight EPD at 131. He also boasts an adjusted yearling weight of 1480 lbs. His dam has an average weaning ratio of 110 on five calves. When it comes to raw power 206E will top the list.

107W comes out of a powerful cow family at Blair-Athol. Seven generations of that family were in production at the same time here last spring and close to 20 females in our herd trace back to 107W's grandmother, 5P. Pictured is a daughter of 107W, Chardonnay. Chardonnay had an extremely competitive show career, highlighted by winning the Hereford Division of the Agribition First Lady Classic and the Agribition Junior Beef Extreme. Get in on the ground floor of some new and exciting genetics!

These embryos are EU qualified. Embryos are currently stored at Bow Valley Genetics. Purchaser is responsible for all costs related to shipping. One 60 day pregnancy guaranteed if implanted by a certified technician.

CONSIGNED BY BLAIRS.AG CATTLE COMPANY
& HAROLDSON'S POLLED HEREFORDS



HAROLDSON'S JVJ ROYAL 24E

39

4 PACKAGES OF TEN (10) UNITS OF SEMEN

HAROLDSON'S JVJ ROYAL 24E DLF HYF IEF MSUDF

AFSY 24E PC03036068 FEB. 20, 2017

KJ HVH 33N REDEEM 48ST ET DLF HYF IEF	SHF RADAR M326 R125 DLF HYF IEF			
H BK CCC SR GAME CHANGER ET PC03009405	HVH OKSANA 4L 33N DLF HYF IEF			
NJW 78P 63N LADYSPORT 51W ET	TH JWR SOP 16G 57G TUNDRA 63N DLF HYF IEF			
	NJW BW LADYSPORT DEW 78P ET DLF HYF IEF			
HAROLDSON'S WLC RHINO ET 48Y DLF HYF IEF	SHF TAHOE R117 T100 DLF HYF IEF MSUDF			
HAROLDSON'S AD JESSICA 48Y 13B PC02994762	HAROLDSON'S 37H MIRA ET 62K			
HAROLDSON'S WS JESSICA 4T 60X	HAROLDSON'S WLL ANCHOR 4T			
	TL 5073 JESSICA 751U DLF HYF IEF			
BW	WW	YW	MILK	TM
5.7	58.8	97.6	26.0	55.4

Royal was the 2017 President's Cup Breed Champion and went on to be the Senior Bull Calf Champion in 2017. This year he was the Senior Champion and Reserve National Champion Bull. His mother is a highly productive, beautiful uddered Rhino daughter. Take advantage of this opportunity.

CONSIGNED BY GOLDEN OAK LIVESTOCK,
ANL POLLED HEREFORDS, AXA POLLED
HEREFORDS & CALVIN & DANNY FORNWALD



ANL 71D JADA 123C 115F

40

OFFERING THE RIGHT TO FLUSH

ANL 71D JADA 123C 115F

KKL 115F PC03050826 FEB. 24, 2018

REMITALL-W START ME UP ET 7B DLF HYF IEF

TH 745A 7B START ME UP 71D PC03045332

RANGELINE 11Y MISS WORLD 745A

NJW 59R 88X RIBEYE 91Z DLF HYF IEF

ANL 91Z JADA 107Y 123C PC03007959

GOBLE JADA 107Y DLF HYF IEF

CB 57U CAN DOO 102Y DLF HYF IEF MSUDF

REMITALL-WEST MARVEL ET 76Y DLF HYF IEF

BOYD WORLDWIDE 9050 ET DLF HYF IEF

RANGELINE 60S TEAR DROP 11Y

NJW 98S R117 RIBEYE 88X ET

NJW 60D 131A LADYSPORT 59R ET

LAKE 002 KILOWATTS 104S DLF HYF IEF

DELHAWK JADE 204S 0921

BW

WW

YW

MILK

TM

5.0

63.6

100.7

21.7

53.5

We feel this female has as much to offer as any that ANL has sold. She topped ANL's sale this fall at \$36,000. Lots of bone, bold sprung, a lot of shape and huge middle. A female with style, long fronted and cosmetically pleasing. To top that, she has a very good mother that is hard to fault.

Guaranteeing six (6) embryos with no cap. Guaranteeing two (2) 60 day pregnancies if implanted by a certified technician.

CONSIGNED BY LEWIS FARMS



LFE Fame and Fortune 242U
Sire: LFE Tangle Ridge
Past high seller to Ashworth Farm & Ranch



LFE Rose 20A
Sire: LFE Springsteen
Past high high seller to Westway Farms



LFE Violet 641A
Sire: NCB Cobra, High selling female to
Mader Ranches/ Rust Mtn/Canadian Donors



LFE Heaven Sent 30X
Sire: LFE Advance
Past high seller To Westman Farms



LFE Mary 6C
Sire: LFE Gotham
Current donor female at Lewis Farms



LFE Heaven Sent 89A
Sire: Full Throttle
High selling female to Swan Lake



LFE Pearl 26B
Sire: LFE Springsteen
High selling female to Westman Farms



LFE Sheila 68F
Sire: LFE McDavid
High selling female to Sandy Reid, Ontario



LFE Crocus 9C
Sire: LFE Commissioner
Past high seller to Meadow Acres



LFE Harlow 639B
Sire: LFE Commissioner
High selling female to JP Cattle Co.



LFE Heaven 647D
Sire: Riddler
High selling female to Rocking Heart Range



LFE Pocahotas 74C
Sire: LFE Springsteen, High selling
female to Sunny Valley Simmentals



LFE Heaven Sent 659D
Sire: LFE Gotham
Past high seller to Westman Farms



LFE Miss Reward 617D
Sire: LFE McDavid
High selling female to Quinn Wilson



LFE Charo 15F
Sire: LFE Beast Mode
Past high seller to Ashworth Farm & Ranch



LFE Whammy 41E
Sire: LFE Explorer
High selling female to Bata Bro's, ND

Lewis Farms is proud to offer the pick of the Simmental 2019 born heifer calves. Fresh genetics from exclusive herd sires like Cash, Game Face, Tycoon, Night Hawk, Stunner and AmberJack. As well as daughters from reputable, breed leading sires such as Riddler, Beast Mode, Cobra and Profitmaker. Whether you're in pursuit of a show female, donor cow, cool baldy or a herd bull producer, the heifer pen offers something for everyone. The 2019 heifer pen consists of 165 red and black calves, 35 which will be the product of Embryo Transfer and 80 from Artificial Insemination. No calves have been selected from this pen for any other reason. You will have full access to some of the best genetics amongst the Simmental breed. Feel free to contact Kyle at 780-220-9188 or Ken at 780-818-3829 for more information regarding this pick.



CAS Hugs N Kisses 1W
Dam



IRCC Breathtaking 415B
Sister owned by Wildwood Farms



LOT 42

BW: 86 lbs.

Bald faced baby out of the famous Hugs n Kisses cow that is well represented in this sale and could be the most recognizable Simmental donor in Eastern Canada. Sired by a full brother to the Walk this Way bull that sired the FNL \$76,000 high seller. Hugs, herself, was the Royal Winter Fair Reserve Champion and has productive progeny scattered all over Canada. If you need an easy going, junior yearling show heifer with a proven marketable pedigree, this little sweetheart is just the ticket.

42

IRCC BR **GOOD NIGHT KISS** 969G

TOPS 969G BPG1295514 MAY 2, 2019

NCB COBRA 47Y	LFE VIPER 455U
MCINTOSH IRONCLAD 7E BPTG1206410	NCB MISS DREAM 22T
MADER P IRON SUGAR 7X	MADER P BLACK IRONMAN 22U
	LFE FAMOUS 632T
REMINGTON ON TARGET 2S	REMINGTON RED LABEL HR
CAS HUGS N KISSES 1W BPG711895	DRAKE SOFT TOUCH 15M
LFE CANDY KISSES 39S	TNT DYNAMITE BLACK L137
	LFE TINA 15G

BW	WW	YW	MILK	MWWT
3.4	74.8	111.5	25.4	62.8



LOT 43

43

LPP BS ELEGANT 6G

LPP 6G BPG1278694 JAN. 1, 2019

W/C LOADED UP 1119Y
W/C BANKROLL 811D BPTG1217569
MISS WERNING KP 8543U

JF BACK IN BLACK 406B
BLACKRIVER ELEGANT BLACK 92E BPG1214065
BLACKRIVER BARE HUGS 66A

REMINGTON LOCK N LOAD 54U
AUBREYS BLACK BLAZE III
WAGR DREAM CATCHER 03R
MISS WERNING 534R
STF ROYAL AFFAIR Z44M
ZEIS PCGF PERFECTION
WHEATLAND BULL 680S
CAS HUGS N KISSES 1W

BW	WW	YW	MILK	MWWT
1.4	64.2	91.2	21.4	53.5

BW: 74 lbs.

Bankroll daughter...Mic Drop!!! Hard to make one more tanky and rugged and she doesn't give up look. Her dam is a statured young female we purchased from Dan in Quality Control 2 and she is heading into our donor program this spring. 6G has a nice future if you're thinking breeding piece or one to play with as a yearling.



Greyledge Amber 11D
Dam



LOT 44

BW: 85 lbs.

This is the type that makes you want to go to the barn! Elite, show heifer prospect, backed by a proven cow family. We jumped at the chance to purchase her dam after admiring the cow family for years after her maternal sister's RAWF National Show win. Her dam we also campaigned successfully in Ontario and Quebec and she's headed for the donor pen. On the top side is MAF R Horizon. I have always had his progeny circled in sale catalogues. I love the softness and mass they have and Amber Moon is certainly no exception! Add in the show ring style of her mother and you have the perfect combination of power and attractiveness. This one we had no intentions on selling, but when Pete and T Bar came looking for our best, this was it.

44

J-STAR **AMBER MOON** 925G

JSTR 925G PG1282324 FEB. 20, 2019

LFE BS LEWIS 322U
MAF R HORIZON 7Y PG744058
LFE KJLI DREAMLADY 79W

CDM BROKER BOONDOCK 18B
GREYLEDGE AMBER 11D PG1172504
GREYLEDGE BARELY BEHAVIN

R PLUS BLACKEDGE
LFE BS MS ARNOLD 135S
LFE DREAMING RED 503S
KJLI ANNA 71P
MR HOC BROKER
LPP STAR DATE 2Z
HARVIE JDF WALLBANGER111X
X-T RED UPTOPIA 60U

BW	WW	YW	MILK	MWWT
4.4	80.8	107.0	11.7	52.1



LOT 45

45

KADE'S MS MONTANA 119G

KADE 119G BPG1294155 MAR. 2, 2019

TNGL GRAND FORTUNE Z467	SS EBONYS GRANDMASTER			
KADE'S EASY FORTUNE 19E BPG1205286	AJE/HS/MBCC HOPE FLOATS			
KADES PRIDE 31Y	3C MACHO M450 BZ			
	KADE'S PRIDE 16P			
SPRINGCREEK OLYMPIAN 66A	SPRINGCREEK ALL IN 155Y			
KADE'S MS MONTANA 19D BPG1179262	SPRINGCREEK LINNE 33R			
KADES MS MONTANA 5Z	TNT GUNNER N208			
	REMINGTON MS MONTANA 66W			
BW	WW	YW	MILK	MWWT
4.4	83.7	120.3	22.8	64.7

BW: 82 lbs.

119G is a real eye appealing heifer that we have admired since birth. Here's a heifer that we will have a hard time parting with, as she comes from the very top of the heifer pen. She's a deep sided, clean fronted heifer that has a lot of power for a March, with some serious shag, wrapping it all together with a blaze face! She comes to you backed by two very impressive cow families with excellent udders. This will be the only calf crop off the recently deceased, Easy Fortune 19E. She was successfully campaigned this summer. One that's going to be competitive in the show ring and we are confident she will produce well for her new owners. You won't want to miss her come sale day!



RHF Miss Red Combo Broker
Dam



CAR-LAUR RED FANTASIA 827F

Fantasia comes to you as the top of the Car-Laur heifer pen and has gathered a lot of attention after she commanded a \$28,000 sale price at the recent Ontario Autumn Simmental Classic Sale. This baldy female is super stout and extremely functional. Her outcross pedigree offers something different in a dark red package with a Full Blood background. Fantasia is no mistake, as she comes from a long line of productive cows, with her dam being a past high seller of the very same sale. This heifer is built for the times, outcross in her genetic makeup and bred to produce.

We are offering the right to the first flush. Guaranteeing six (6) Grade A embryos with an open top. Choose the sire of your choice or visit with the Maple Lake crew and talk with them on their own exclusive bull battery, which is open for your use. Fantasia is due in early January which gives ample time for her to cycle and be prepared for embryo transplant.

Please contact anyone at Car-Laur or Maple Lake to be involved in this front end female.

46

**OFFERING THE RIGHT TO FLUSH
CAR-LAUR RED FANTASIA 827F**

CLTW 827F PG1280606 JAN. 2, 2019

CHAMPS BRAVO
PHS YUKON 759078
BAR 5 SA MININNA 457P

MR HOC BROKER
RHF MISS RED COMBO BROKER PG1142947
RHF RED COMBO STUBBY 340A

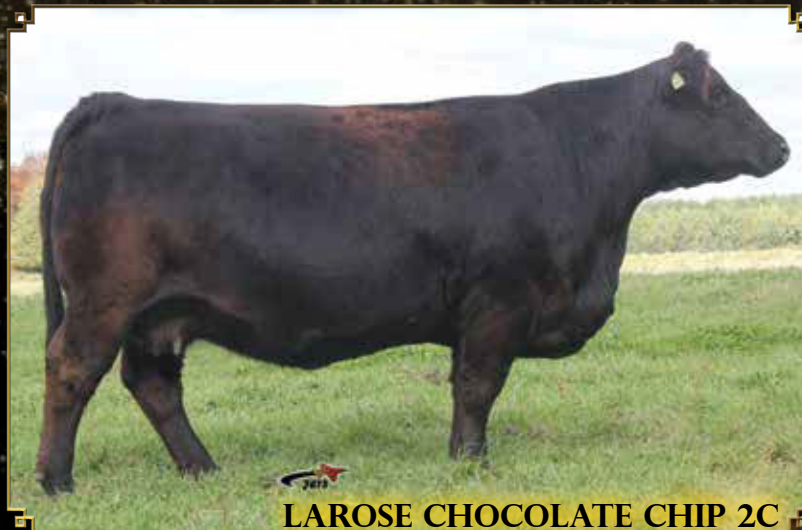
CHAMPS ROMANO
VIRGINIA POLL BARBI SUE
LATCO GOLD II
ELDANDI MINKA
SVF STEEL FORCE S701
JM BF H25
LFE BS LEWIS 322U
MARYWOOD BLACK COMBO 38W

BW	WW	YW	MILK	MWWT
3.9	67.9	93.2	21.8	55.8

CONSIGNED BY JETSTREAM LIVESTOCK & R PLUS SIMMENTALS



R Plus Uppercut 6103D
Sire



LAROSE CHOCOLATE CHIP 2C



CMS Sochi 307A
Sire

47A

THREE (3) GRADE A IVF EMBRYOS

R Plus Uppercut 6103D x Larose Chocolate Chip 2C

MR TR HAMMER 308A ET	MR NLC UPGRADE U8676				
R PLUS UPPERCUT 6103D BPG1189994	SVF/HS EXPECTING A DREAM				
MISS R PLUS1017Y	R PLUS MCSTEAMY 8028U				
	TRIPLE C POWER TIME M67K				
	SHS ENTICER P1B				
HARVIE JDF WALLBANGER111X	JDF PEPSI 61U				
LAROSE CHOCOLATE CHIP 2C BPG1143964	RC CLUB KING 040R				
GREYLEDGE VOODOO	MAPPINS RED RINGER 198W				
PE	BW	WW	YW	MILK	MWWT
	3.1	77.8	123.5	24.4	63.3

47B

THREE (3) GRADE A IVF EMBRYOS

CMS Sochi 307A x Larose Chocolate Chip 2C

DRAKE POKER FACE 2X	JS SURE BET 4T				
CMS SOCHI 307A BPG793067	DRAKE TULA 1R				
YR BLK PRIMADONNA 930W	IPU BLACK HEAVYWEIGHT 64S				
	YR BLK PRIMADONNA 11L				
	SHS ENTICER P1B				
HARVIE JDF WALLBANGER111X	JDF PEPSI 61U				
LAROSE CHOCOLATE CHIP 2C BPG1143964	RC CLUB KING 040R				
GREYLEDGE VOODOO	MAPPINS RED RINGER 198W				
PE	BW	WW	YW	MILK	MWWT
	0.7	69.2	109.2	27.5	62.1

Chocolate Chip has developed into a powerful female as is demonstrated by the photo taken this October. She is sound, agile in her movement, wide topped and has tremendous capacity. Chocolate Chip has a tremendous show record claiming Calf Champion at Expo Boeuf in 2015, where she was also shown beside her dam who was named Reserve Champion Female. The very next year she powered to the top of the heap at the Royal to be crowned Champion Female under judge Bill Bigleni. Her first bull is the walking herd sire for Jetstream and now enroute to Estevan for the coming years and we are happy with how his calves are developing. We are excited to share embryos from two exclusive and elite sires, R Plus Uppercut and CMS Sochi, both deceased. R Plus Uppercut had Champion Get of Sire at the 2019 Farmfair International for SIBL Simmentals. Take advantage of this opportunity to get in on some exclusive genetics.

Embryos are qualified for Canada. Selling three IVF embryos per mating, guarantee one pregnancy per lot if implanted by a certified technician. Embryos are stored at EastGen in Guelph, ON.



Larose Chocolate Chip 2C
2016 Royal Agricultural Winter Fair
Grand Champion Female



Jetstream RPlus Gemini 18G
Full Sibling to Lot 47A

CONSIGNED BY DOUBLE BAR D FARMS



Bankroll Daughter
\$164,000 High Seller for RJ



CWSS Jokes On You 2G
Owned by CW Saltwater Simmentals



Double Bar D Morgan 430G
Daughter
Owned by Longview Angus



Double Bar D Annuity 635F
High Selling Bull in 2019
Sold to Bruce Cuddy, NC



W/C BANKROLL 811D



Double Bar D Brett 536F
Daughter
Owned with Dusty Rose

Bankroll has turned into the ultimate sire. His females has been highly sought after and valuable. But what's so impressive to our program is the reaction and acceptance his sons have been to our bull sale this past year. Certainly a sire with a great future that has already laid out that he is very proven .

48

5 PACKAGES OF FIVE (5) UNITS OF SEMEN W/C BANKROLL 811D

RLD 811D BPTG1217569 JAN. 30, 2016

REMINGTON LOCK N LOAD 54U
W/C LOADED UP 1119Y BPTG1199413
AUBREYS BLACK BLAZE III

WAGR DREAM CATCHER 03R
MISS WERNING KP 8543U 2446017
MISS WERNING 534R

REMINGTON ON TARGET 2S
BAR 15 MISS KNIGHT78E-51G
3C MACHO M450 BZ
BLAZE IV 1P
CNS DREAM ON L186
3C MELODY M668 BZ
R&R WAREHOUSE K609
MISS WERNING 934J

BW	WW	YW	MILK	MWWT
0.3	67.1	90.3	23.0	56.6



LOT 49A



Full Sister

49A

DF MR **TRITON** 64G

64G EM925897 FEB. 20, 2019

LT LONG DISTANCE 9001 PLD
M&M OUTSIDER 4003 PLD M846631
M&M MS CARBINE 1567 PLD

TR MR FIRE WATER 5792RET
TRPZC IMPRESSIVE LADY 0790ET EF1121686
THOMAS MS IMPRESSIVE0641

LT SILVER DISTANCE 5342P
LT BELLE 7026 P
M&M RAPTOR 8122 PLD
MS COOLEY JPOT 1107N9 ET
THOMAS OAHE WIND 0772ET P
THOMASSWISSERSWEET1764ET
JWK IMPRESSIVE D040 ET
BCI MISS VERYLIMIT 6033P

BW	WW	YW	MILK	MTL
-0.2	33	63	5	21

BW: 86 lbs.

Triton presents a unique opportunity for Charolais breeders in Canada. This calf combines the most sought after, successful genetics in America brought to you here in Canada He is an Outsider son that possesses an abundance of muscle and power while still having that phenotype that Outsider is so well known for. His dam is a full sister to the great Turton bull who is a Firewater x Thomas 0641, quite possibly the greatest mating in the last decade of the Charolais breed. Triton is a long-sided calf with an explosive muscle pattern, he's one that transitions so well from his shoulder into his fore rib and is super extended in his front one third. He is real good footed and sound when you put him in motion. We truly think this calf has an extremely big future and will be a major impact wherever he may go

Selling 1/3 interest with breeding season possession available. We would like to campaign this calf throughout the fall.



DF MS Exotic Empress 7968F



DF MS EXOTIC EMPRESS 7968F

Leading edge genetics at their finest! Empress combines the two most dominant donor dams on the US Charolais scene with Thomas Ms Impressive 0641 and M&M Carbine, ensuring her genetic predictability. Since last year's Falls View event Empress has matured beautifully, being well built with soundness of structure and that unmistakable look one expects of the Outsider x 0641 lineage, which recently rewarded Empress as the Reserve Junior Champion Female at Agribition. Her future is only getting started, with the impeccable udder structure she's dropping down, we expect great things to come. This flush opportunity allows the progressive breeder early access to these sought after genetics and to be part of the rising tide of DF Exotic Empress.

Guaranteeing a minimum of six (6) transferable embryos with two 90 day pregnancies. Buyer will receive all embryos up to 10 and we will split every embryo beyond 10.

49B **OFFERING THE RIGHT TO FLUSH**
DF MS EXOTIC EMPRESS 7968F
7968F EF1262945 FEB. 14, 2018

LT LONG DISTANCE 9001 PLD	LT SILVER DISTANCE 5342P			
M&M OUTSIDER 4003 PLD M846631	LT BELLE 7026 P			
M&M MS CARBINE 1567 PLD	M&M RAPTOR 8122 PLD			
	MS COOLEY JPOT 1107N9 ET			
TR MR FIRE WATER 5792RET	THOMAS OAHE WIND 0772ET P			
TRPZC IMPRESSIVE LADY 0790ET EF1121686	THOMASWISSERSWEET1764ET			
THOMAS MS IMPRESSIVE0641	JWK IMPRESSIVE D040 ET			
	BCI MISS VERYLIMIT 6033P			
BW	WW	YW	MILK	MTL
0.0	33	63	5	21



LOT 50



Sharodon Double Vision 1D
Sire



DF Ms Champagne 56043
Dam

50

DF MS **SWEPT AWAY** 043G

043G F1280320 JAN. 13, 2019

CEDARDALE ZEAL 125Z
SHARODON DOUBLE VISION 1D M898862
WLM MACKS YASMAN 16Y

TR PZC MR TURTON 0794 ET
DF MS CHAMPAGNE 56043 EF1223338
TR MS WYOMING WIND 5604R

CEDARDALE TYRANT 31T
CEDARDALE MISS 64T
SVY PILGRIM PLD 655S
WLM MACKSUPTOWN LADY 7U

TR MR FIRE WATER 5792RET
THOMAS MS IMPRESSIVE0641
LT WYOMING WIND 4020 PLD
JES MS HI YIELD K31

BW	WW	YW	MILK	MTL
3.4	29	52	7	21

"Swept Away" is what you will be when you set in and study this magnificent female. The depth and substance of this female can only be rivaled by the depth and substance of her pedigree. Her granddam, TR Wyoming Wind 5604, is one of the most celebrated Charolais cows in the breed and her dam, DF Ms Champagne, was a many time champion including Champion Cow/Calf pair at Charolais Junior Nationals. Her young sire, Double Vision, is also creating a substantial stir among Charolais enthusiasts. This young donor candidate is right for the times and right for any progressive program.



DF MS Merlot 56049 ET
Dam



TR MS Wyoming Wind 5604R
Granddam



LOT 51

BW: 75 lbs.

This ultra feminine female has all the parts to take you to the next level. The structure of "Glory" is undeniable and when set in motion, this smooth made beauty can walk the walk. This popular pedigree of Outsider, Montezuma and 5604 has been tested time and time again. This is where the phenotype lives up to the hype that the genotype has created...delivered to you in a banner hanging package just screaming success!

51

DF MS **MERLOT'S GLORY** C01G

C01G F1280327 MAR. 12, 2019

LT LONG DISTANCE 9001 PLD
M&M OUTSIDER 4003 PLD M846631
M&M MS CARBINE 1567 PLD

GERRARD MONTEZUMA 6T
DF MS MERLOT 56049 ET EF1244750
TR MS WYOMING WIND 5604R

LT SILVER DISTANCE 5342P
LT BELLE 7026 P
M&M RAPTOR 8122 PLD
MS COOLEY JPOT 1107N9 ET
SVY FREEDOM PLD 307N
GERRARD ROXANNE 18P
LT WYOMING WIND 4020 PLD
JES MS HI YIELD K31

BW	WW	YW	MILK	MTL
0.8	32	59	4	20

CONSIGNED BY PRAIRIE COVE CHAROLAIS



PZC LILY 5013 ET

CONSIGNED BY THOMAS RANCH & BOYERT CATTLE



M&M OUTSIDER 4003 PLD

52

THREE (3) EMBRYOS

M&M Outsider 4003 PLD x PZC Lily 5013 ET

LT LONG DISTANCE 9001 PLD
M&M OUTSIDER 4003 PLD M846631
M&M MS CARBINE 1567 PLD

TR MR FIRE WATER 5792RET
PZC LILY 5013 ET PFC715055
THOMAS MS IMPRESSIVE 0641

LT SILVER DISTANCE 5342P
LT BELLE 7026 P
M&M RAPTOR 8122 PLD
MS COOLEY JPOT 1107N9 ET
THOMAS OAHE WIND 0772ET P
THOMASWISSERSWEET1764ET
JWK IMPRESSIVE D040 ET
BCI MISS VERYLIMIT 6033P

PE	BW	WW	YW	MILK	MWWT
	-0.7	37	71	25	43



**BRCHE White Bear
8505 PLD ET
Outsider Son**



**BRCHE Berkly Ann
8507 PLD ET
Outsider Daughter**

The most dominant Charolais show female in recent memory, unprecedentedly winning the two biggest and most prestigious shows in our business, back to back going against the deepest set of females ever assembled. She won 2017 RBC Beef Supreme Champion Female and 2017 Farmfair International Supreme Champion Female. Lily is flawless in her phenotype and angularity, she is perfectly designed with a massive rib and top as well as fantastic back leg set and structure. These are the highest quality genetics on the Charolais market, this mating has only ever been offered once before commanding \$2,000/egg.

Outsider genetics have been on a roll in the show ring with Whitebear being named the 51st Reserve US National Champion Bull in Louisville and Berkley Ann being named Champion Female at Farmfair and Reserve Champion at Agribition.

Guarantee one (1) pregnancy.

53

6 PACKAGES OF FIVE (5) UNITS OF SEMEN M&M OUTSIDER 4003 PLD

PMC749963 APR. 1, 2014

LT SILVER DISTANCE 5342P
LT LONG DISTANCE 9001 PLD M780143
LT BELLE 7026 P

M&M RAPTOR 8122 PLD
M&M MS CARBINE 1567 PLD PF1151854
MS COOLEY JPOT 1107N9

LT SILVER YIELD 3196 P
LT MATTIE 9026 POLLED
LT EASY PRO 1158 PLD
LT BELLE 5110 PLD

DR STEALTH 574
BALDRIDGE SWEETHEART 7M
CCR JACKPOT 1410K5 PET
MISS CCR MONTE 1107F ET

BW	WW	YW	MILK	MTL
-1.2	37	69	23	41

Outsider is the hottest sire in the Charolais breed in the USA right now. Outsider's progeny have dominated the show ring at the major shows in the USA in 2017, 2018 and 2019. His recent winners include 2019 National Grand Champion Heifer and 2019 National Reserve Grand Champion Heifer as well as 2019 National Reserve Grand Champion Bull. Plus, the 2019 National Grand Champion Bull is a maternal brother to Outsider. Half interest in Outsider's dam, M&M Ms Carbine 1567 PLD, recently sold in the Effling sale for \$42,000.

TERMS & CONDITIONS

TERMS

The terms of the sale are cash or cheque, payable at par at the sale location. The right of property shall not pass until after settlement has been made; no invoicing on buyers in attendance unless previous arrangements have been made. Every animal sells to the highest bidder and in cases of disputes, the auctioneer's decision will be final. Announcements from the auction block will take precedence over the printed matter in the catalogue. Current exchange rates will be announced sale day. All monies are in Canadian funds.

CERTIFICATE OF REGISTRATION

Each animal will carry papers issued by the appropriate breed association, unless otherwise stated. A certificate of registry duly transferred will be furnished to the buyer for each animal after payment has been made.

HEALTH

All animals in the sale have met all necessary health requirements.

GUARANTEE

Each animal becomes the purchaser's risk immediately after the animal is sold. All animals in this sale will be sold under the terms and guarantees set forth by the appropriate breed association with regard to health, freedom from defects and from both reproductive and specific genetic unsoundness.

PREGNANCY INFORMATION

All serviceable age females have been pregnancy examined by an accredited veterinarian, giving an estimated length of gestation. This estimated gestation period shall be used only as a guideline to calving and is not a guarantee of actual service.

LIABILITIES

All persons attend the sale at their own risk. The seller, facility owner and sale manager assume no liability legal or otherwise, for any accidents that occur. It is understood that T Bar C Cattle Co. (2013) Ltd. is acting only as a medium between buyer and seller and is not responsible for any failure on the part of either party to live up to his obligations. Neither does T Bar C Cattle Co. (2013) Ltd. assume any financial obligations to collect or enforce collection of any monies between parties and any legal action that may in exceptional cases be taken must be between the buyer and the seller. T Bar C Cattle Co. (2013) Ltd. assumes no responsibility for any credit extended by the seller to the buyer. The buyer must look to the seller for fulfillment of all guarantees and representations made hereunder.

DELIVERY

Assistance will be given in getting your purchases home. Each animal becomes the risk of the purchaser as soon as sold.

PHONE, MAIL, WIRE BIDS

Bidders unable to attend the sale may phone, wire or mail their bids and instructions to the sale manager, auctioneer or special representatives. Bids must be received in sufficient time prior to the sale.

INSURANCE

We strongly recommend that insurance is purchased for full value.

ERRORS

All announcements at sale time, written or oral, supersede any written material in the catalogue.



Trust

family neighbours wisdom intuition dreams

Your farm has hundreds of moving parts – each as important as the next. With an eye for detail and personalized approach, trust MNP's agriculture specialists to provide the accounting, consulting and tax advice you need.

At MNP we believe trust is earned.

ACCOUNTING > CONSULTING > TAX

MNP.ca

Wherever business takes you. MNP

BP1

PROVITRO IVF & ET SERVICES

(519) 280-2498 ProVitalVF@gmail.com

Offering one conventional flush

1 x Donor set-up (Dominant Follicle Reduction)

- to be performed at Fradon donor facility

Flush drugs

1 x Conventional Flush

- to be performed at Fradon donor facility

Freezing of resulting embryos
and processing them
to be eligible for export

BP2



INTERNATIONAL TRANSPORTATION ESTABLISHED IN 1933

OFFERING **4** SPOTS ON ANY EXISTING TRUCK
GOING TO A CENTRAL POINT
IN CANADA

BRUCE & BUTCH POLAND

829 REST ACRES ROAD, PARIS, ON, CANADA N3L 3E3
519-442-3106 OR 519-442-6242 FAX 519-442-1122

TOLL FREE 877-442-3106

hsknill@pppoe.ca www.hsknilltransport.com

BP3

Offering **\$750** towards any of our services

Complete Reproductive Services Centre

Domestic and Export
Qualified Semen Collection
Owners Use Semen

Embryo Collection and Transfer
Certified for Export Production
IVF Flushes

Embryo and Semen
Storage and Transfer
Recip Program

1.587.887.1934

Rob F. Stables, DVM embryos@bowvalleygenetics.com
Facility located at Bassano, AB www.bowvalleygenetics.com

BOW VALLEY
EST. 2009
GENETICS

Advancing Reproductive Solutions

BP4



Offering \$500 towards any fertility related service

Listowel

Fire No. 8451, Road 164
Hwy. 23 North
P.O. Box 66
Listowel, Ontario N4W 3H2
Telephone: 519-291-2060
Toll Free: 1-800-565-2047
lclinic@heartlandvets.ca

Mount Forest

322 Main Street North
Mount Forest, Ontario N0G 2L2
Telephone: 519-323-4422
Toll Free: 1-877-523-4422
Fax: 519-323-4334
mfcclinic@heartlandvets.ca

Drayton

7294 Wellington Street North
P.O. Box 70
Drayton, Ontario N0G 1P0
Telephone: 519-638-3391
Toll Free: 1-877-761-2253
Fax: 519-638-5858
dclinic@heartlandvets.ca

BP5

**Offering one
full page
colour ad
in Todays Angus
Advantage magazine**



TODAYS
Angus Advantage

Ph: 306-933-4200 Fax: 306-934-0744
info@todaysangus.com

www.todaysangus.com

BP6



Meet our Bullseye team.

We are a Western Canadian, family-owned company that caters to purebred, commercial, and backgrounding segments with a focus on forage analysis, ration balancing, and custom formulation.



**\$1,500
value!**

**Stay tuned for our donated pallet of mineral
that will be auctioned off during the sale!**

Joe McLean
Beef Consultant
403-393-3302

Doug Roxburgh
Beef Consultant
403-392-4541

Kelly Resler
Beef Consultant
403-506-7474

Trevor Hamilton
Beef Consultant
403-586-1114

Tom McNeely
Co-Founder
780-679-7220

Mark Cameron
VP of Nutrition
and Consulting
403-360-1669

CONSIGNORS...

ANGUS VALLEY FARM

Bruce McRae
Box 555, Manitou, MB R0G 1G0
204-242-4502
bruce.mcrae65@icloud.com

ANL POLLED HEREFORDS

Karl and Karen Lischka
Box 14, Steelman, SK S0C 2J0
306-487-2670
lischka@sasktel.net

AXA POLLED HEREFORDS

Allan Marshall
Box 1101, 1467 Main Street, Hampton, NB E5N 8H1
506-636-1877
allan@axafarms.ca

BLAIR-ATHOL FARMS

Duncan & Val, Jeff & Grace, & Jarrett Lees
Box 386, Arcola, SK S0C 0G0
306-455-2619
306-577-9703
Jeff, Grace, Christin, Kylee, Jackson, Hannah & Josie
306-577-1375
www.blairatholfarms.com

BLAIRS.AG CATTLE COMPANY

Kevin Blair
Box 610, Lanigan, SK S0K 2M0
306-365-7922
Blake MacMillan: 306-528-7484
kevin@blairs.ag

BLACK RIVER FARMS

Dan & Janet Munro
301 Catering Road, Sutton, ON L0E 1R0
Cell: 416-996-9658
branzak@sympatico.ca

BRENDALE ACRES

Tyler Gibson
143 C Line, Allenford, ON N0A 1A0
519-503-7100
gibson_tyler@hotmail.com

CAR-LAUR SIMMENTALS

Carl & Laurie Wright
402144 Grey Road 4 RR 1, Hanover, ON N4N 3B8
519-369-3658
Cell: 519-369-7489
carlaurcattle@gmail.com

DERRER FARMS

Rod, Julie & Rylee Derrer
13913 42nd Street W. Milan, IL 61264
309-314-1492
rjderrer@aol.com

Lot 22

DOUBLE BAR D FARMS

Richard Dimler and Sons
Box 580, Grenfell, SK S0G 2B0
Ken Dimler: 306-697-7204
kenshau@yourlink.ca

Lot 40

DUDGEON CATTLE CO.

Brian & Kim Dudgeon and Family
1128 Bruce Road 40, Dobbinton, ON N0H 1L0
519-353-4014
Brian's Cell: 519-270-2500
dudgeongroup@gmail.com

Lot 40

DUSTY ROSE CATTLE CO.

Randy & Laurie James
Box 67, Arcola, SK S0C 0G0
306-575-7833
jamesoilfield@sasktel.net

EARLEY LIVESTOCK

Mike and Kade Earley
2211 Napperton Dr., Kerwood, ON N0M 2B0
519-661-8713
519-709-7839
earley@lweb.net

ELM LODGE POLLED HEREFORDS

Grant & Mary Elmhirst
1856 Villiers Line RR 1, Indian River, ON, K0L 2B0
705-295-6960
elmldodge@nexicom.net

CALVIN AND DANNY FORNWALD

Box 363, Arcola, SK S0C 0G0
Danny: 306-455-2559

GILCHRIST FARMS

Brad & Kristie Gilchrist
1269 Grey Ox Ave RR 5
Lucknow, ON N0G 2H0
519-440-6720
brad@gilchristfarms.com

GOLDEN OAK LIVESTOCK

Tom McNeely
2346 TWP RD 342, Red Deer County, AB T0M 0K0
780-679-7220
tom@goldenoaklivestock.com

HAROLDSON'S POLLED HEREFORDS

Chad, Lenna & Kristy Wilson
Box 372, Wawota, SK S0G 5A0
306-739-2643
Chad: 306-577-1256

HARVIE RANCHING

Ian & Marlene Harvie, Cole & Jill Harvie
RR 2, Olds, AB T4H 1P3
Cole: 403-994-1314
Jill: 403-771-3502
Ian & Marlene: 403-597-3886
harvie@harvieranching.com

Lot 48

HASSON LIVESTOCK

Rob Hasson
5536 Township Rd 3 RR 7, Guelph, ON N1H 6J4
416-817-7339
hassonlivestock@live.com

Lots 1, 9

HOFFMAN RANCH

Jason, Kaycee & Haxton Hoffman
Box 287, Thedford, NE 69166
Jason's Cell: 530-604-5096
jason@hoffmanranch.com

Lots 12A, 12B

JIMMY JOE HENDERSON

Box 219, Stettler, AB T0C 1L0
403-740-9270
jimmyjoehenderson@gmail.com

INDIAN RIVER CATTLE COMPANY

Billy, Juanita, Owen & Katie Elmhirst
1870 Settlers Line RR 1, Indian River, ON K0L 2B0
705-295-2708
Billy's Cell: 705-761-0896
Juanita's Cell: 705-772-2697
Owen's Cell: 705-772-7717
ircc@nexicom.net

Lot 45

J SQUARE S ANGUS

Jordan & Jacklyn, Jayla & Scottie Sies
Stuart & Kathy
Box 8, Grayson, SK S0A 1E0
306-728-1299
sieser94@hotmail.com

Lot 34

Lot 40

JAYMARANDY LIVESTOCK

Mark and Elisabeth Angus
Box 1273, Beausejour, MB R0E 0C0
204-281-5099
jaymarandy@gmail.com

Lots 13, 24, 25

JDL CATTLE CO.

Josh & Jessica Lasby
David & Shirley Lasby
Justin, Jaimie & Jase Lasby
667019 20 SR, Mulmur, ON L9V 0V5
Justin: 519-943-4147
Josh: 519-278-6819
jdlcattleco@sympatico.ca
jessica.lasby@hotmail.com

Lot 40

JETSTREAM LIVESTOCK

Shane Williams & Joanne Handley
Jared and Lucas Williams
071455 10th Line, East Garafraxa, ON L9W 7A1
519-787-1323
Cell: 519-938-1220
jetslivestock@aol.com

Lots 36A, 36B, 37

Lots 1, 2A, 2B, 2C, 7A, 7B

Lot 32

Lots 19, 20

Lot 42

Lot 28

Lots 23A, 23B, 23C

Lot 35

Lots 47A, 47B

Lots 38A, 38B

Lots 10, 16, 37, 39

Lot 42

Lot 31A, 31B

Lot 46

Lots 49A, 50, 51

CONSIGNORS...

JUSTAMERE FARMS

Jon and Shelly Fox
Box 320, Lloydminster, SK, S9V 0Y2
Office: 306-825-9702
Jon and Shelly Res: 306-825-9624
Lyle and Virginia Fox: 204-638-8103
Jon Cell: 780-808-6860
justamere@sasktel.net

J-STAR LIVESTOCK

Nathan Latchford & Jackie MacGregor
Box 288, Beachburg, ON K0J 1C0
Jackie: 613-585-5055
Doug Milne-Smith: 613-223-1692
jstarlivestock@nrtco.net

LEWIS FARMS

27115A Twp Rd 524
Spruce Grove, AB T7X 3M9
780-962-5050
Kyle: 780-220-9188
kyle@lewisfarms.ca

LLB ANGUS

Lee, Laura & Jackie Brown
Trish, Tim, Luke & Wynne Henderson
Box 217, Erskine, AB T0C 1G0
403-742-4226
Lee Cell: 403-740-9429
Laura Cell: 403-740-9423
llbangus@telus.net

LOBSTER POINT FARMS

John Risley and Jay Hiltz
757 Bedford Hwy
Bedford, NS B4A 3Z7
902-277-1102
jayhiltz@live.com

LYNDEN MANOR FARM

Glen and Caroline Smith
Box 191, Carlisle, ON L0R 1H0
416-526-5428
905-690-6626
g.smith@merit-insurance.com

MAINSTREAM GENETICS

Chris Schmidt
Box 547, Watrous, SK S0K 4T0
306-946-7948
chris@mainstreamgenetics.ca

MAPLE LAKE STOCK FARMS

Gerry and Linda Bertholet
Box 307, Hartney, MB R0M 0X0
204-858-2086
Gerry Cell: 204-741-0340
glbertholet@hotmail.com

Lot 14

MEDONTE HIGHLANDS POLLED HEREFORDS Lot 33

Jack and Lois McAughey
Kevin Brown, Manager
3055 Universal Drive, Mississauga, ON L4X 2E2
Farm Office: 705-326-6889
Jack: 905-625-3151 or 416-565-9382
Kevin 705-330-4663
kafbrown@icloud.com

Lot 44

MILLER LIVESTOCK

Brad and Meghan Miller
1672 Mullifarry Drive, Kerwood, ON N0M 2B0
519-871-1970
mugskoyle@hotmail.com

Lots 21A, 21B, 21C, 21D

Lot 41

OTTER CREEK FARMS

Douglas (DJ) Cook
3480 Highway 38, Odessa, ON K0H 2H0
613-372-5624
dj@ottercreekfarms.ca

Lots 9, 24

Lots 4A, 4B, 11

POPLAR MEADOWS ANGUS

Tanya Belsham
Box 1025, Houston, BC V0J 1Z0
250-845-3050
Cell: 250-845-8474
tdbelsham@gmail.com

Lot 30

PRAIRIE COVE CHAROLAIS

Tim & Wanda Bullick
Tyler & Justine Bullick, Indy and Scarlet
Box 672, Bashaw AB T0B 0H0
Cell: 403-501-0660
tyler.bullick2014@gmail.com

Lot 52

Lot 43

PREMIER LIVESTOCK

Peter Frijters
5164 Line 58 RR 2, Milverton, ON N0K 1M0
519-276-9314
pfrijters@crinet.com

Lots 1-8C, 31A, 31B, 49A, 49B

Lots 14, 26

REHORST FARMS LTD.

Adrian Rehorst
412 Conc 8 RR 3, Teeswater, ON N0G 2S0
Cell: 519-357-7077
rehorst@wightman.ca

Lot 27

Lot 1

R PLUS SIMMENTALS

Marlin and Lucille LeBlanc
Box 1476, Estevan, SK S4A 2L7
306-421-2470
marlinl@sasktel.net

Lots 47A, 47B

Lot 46

SERHIENKO CATTLE CO.

Dennis, Lissa, Katie & Cassidy Serhienko
Box 42, Maymont, SK S0M 1T0
Cell: 306-389-7770
dl.serko@littleloon.ca

Lot 49B

SIX MILE RANCH LTD.

Clayton & Corinne Gibson
Box 8, Fir Mountain, SK S0H 1P0
Phone: 306-266-4895
Tyson Hertz: 403-376-7284
Fax: 306-266-2028
sixmile@sasktel.net

Lots 17, 49B

STEPHENS GENETICS

Jeff Stephens
542 Woodhill Rd, Troy, ON L0R 2B0
905-317-8252
yellowbriarjeff@gmail.com

Lot 15

STRONGBOW FARMS LTD.

Devon and Heather Bertholet
Box 232, Hartney, MB R0M 0X0
204-747-4371
strongbowfarms@gmail.com

Lot 29

THOMAS RANCH

Troy and Veabea Thomas
Clint and Cally Kindred
18475 Capri Place, Harrold, SD 57536
605-973-2448
Troy Cell: 605-222-1258
thomas@thomasranchcattle.com

Lot 53

WILBAR CATTLE CO.

Bryan and Tracey Willms
Box 176, Dundurn, SK S0K 1K0
306-492-2161
Bryan's Cell: 306-492-7504
Tracey's Cell: 306-380-6772
wilbarcattle@gmail.com

Lot 30

WINDULAN CATTLE COMPANY

Mike Portena
6077 Line 60 RR 1
Moncton, ON N0K 1P0
519-347-2907

Lots 3A, 3B, 3C, 49B

WORTH-MOR CATTLE

Kyle & Rachel Petherick
1082 James Rd RR 5, Campbellford, ON K0L 1L0
705-768-3560
worth-mor@hotmail.com

Lot 18

YOUNG DALE ANGUS

Barry and Marj Young
Robb Young
Box 28, Carievale, SK S0C 0P0
306-928-4810
Barry Cell: 306-482-7952
Robb Cell: 306-482-7275

Lot 22

RETURN UNDELIVERABLE
CANADIAN ADDRESSES TO:

T BAR C CATTLE CO. LTD.
BOX 2330
WARMAN, SASKATCHEWAN
S0K 4S0

PREMIER & GUESTS

Falls View

PRODUCTION
SALE

CREATED BY

Today's
Publishing

