



31<sup>ST</sup> ANNUAL

# Keystone Klassic

BLACK & RED ANGUS SALE

Saturday, December 7, 2019

1:00 PM | Keystone Centre - Canada Room | Brandon, MB

31<sup>ST</sup> ANNUAL

# Keystone Klassic

1:00 PM | Saturday, December 7, 2019

Keystone Centre, Canada Room  
Brandon, MB

### Sale Staff

Brent Carey, Auctioneer	403-650-9028
Chris Poley	306-220-5006
Shane Michelson	403-363-9973
Ben Wright	519-374-3335
Bryan Mackenzie	403-627-8266

### Insurance

Lois McRae	204-728-3058
Keystone Livestock Services	

### Accommodations

**Canad Inns - Sale Headquarters** 204-727-1422  
(A block of rooms are available, call early and ask for the "Keystone Klassic Sale" for rooms. Rooms will be held until November 15, 2019)

<b>Days Inn &amp; Suites</b>	204-727-3600
------------------------------	--------------

### Schedule of Events

#### Friday, December 6

Cattle Viewing All Day  
5:30 PM - Salute to Santa Party

#### Saturday, December 7

10:30 AM to 1:00 PM - Cattle Viewing  
1:00 PM - Sale Time

**COFFEE AND LUNCH ARE AVAILABLE  
AT THE CANTEEN.**

### Junior Incentive

**Eligibility is only for Juniors and 4-H Members.  
Purchaser must be in attendance and purchase  
must be transferred into the Junior's name.  
10% discount available on all 2019 heifers.**

### Online Bidding:

Internet Bidding Available



[www.dlms.ca](http://www.dlms.ca)

For more information call DLMS:  
Mark Sholgan 780.699.5082 or  
DLMS Purebred Team 780.991.3025

### from the desk at T Bar...



**CHRIS POLEY**  
306-220-5006

Welcome to the 31st Annual Keystone Klassic Angus Female Sale on December 7th in the heated facilities of the Keystone Centre, Brandon, Manitoba. This event has been a highlight and a source of some of the finest seedstock in the Angus breed.



**SHANE MICHELSON**  
403-363-9973

After many miles and endless gates, we have selected an outstanding lineup of breeding stock, Black and Red, offering opportunities for breeders, large, small or new. The selections have been sourced out of front pastures and intended for front pastures from both old-line, experienced breeders and young, new producers. Keystone Klassic is one of the oldest running group sales in the history of the breed.



**BEN WRIGHT**  
519-374-3335

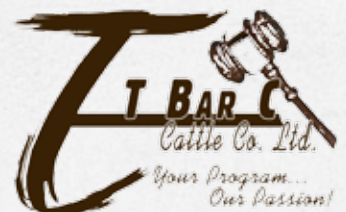
The scope of this sale offers diversity in phenotype and genetics. Keystone is the source of the newest and freshest genetics in the industry. Here's an opportunity to select a broody bred and cash in on a coupon in a month or two. The breds are awesome!

Attention Juniors! Keystone Klassic, again, offers a junior incentive with a discount on your purchase. Wow – what a lineup to select from! With all the junior events throughout the summer, this is a great opportunity to acquire a competitive prospect that is already halter broke and has had her first trip to town. By the way...overage juniors can also participate.

The first weekend in December is Manitoba's Angus weekend, plan to be with us. Feel free to call any of these progressive breeders if you would like to know more about their offering.

If we, at T Bar C, may be of assistance, prior to or sale day, please contact any of the T Bar team and we will be pleased to offer our professional services.

Chris Poley



Box 2330, Warman, Saskatchewan S0K 4S0  
Ph: 306-933-4200 Fax: 306-934-0744  
info@tbarc.com www.buyagro.com



Pollyanna 73Z



Young Dale Pollyanna 73Z

Consigned By Young Dale Angus, Carievale, SK

1

YOUNG DALE **Pollyanna** 73Z

FEMALE RYA 73Z 1675965 FEB. 23, 2012

S A V NET WORTH 4200	S A V 8180 TRAVELER 004	YOUNG DALE REAL DEAL 18K
<b>YOUNG DALE PANARAMA 66T</b>	S A V MAY 2410	PAT LADY SANDRA 2C
YOUNG DALE POLLYANNA 22P	YOUNG DALE CASINO 67M	YOUNG DALE AIR TRAVEL 90P
	YOUNG DALE POLLYANNA 18M	YOUNG DALE POLLYANNA 22P

**BW: 75 lbs. ADJ WW: 657 lbs. ADJ YW: 951 lbs.**  
**BW: 2.9 WW: 50 YW: 79 MM: 23 TM: 48 MCE: 7.0**

Pedigree is impeccable, her design is all Young Dale and words are inadequate in describing this prolific cow. Broody, great hair, fabulous udder with a phenotype that we all ache for. She has it all. Potential donor cow. Let your mind run wild, this opportunity is all yours. She is nursing a Capitol One 30C bull calf that is destined to be a herd bull, all as a bonus to this great offering.

**Selling open and ready to be flushed.**  
**Reserving the right to share a successful flush.**



Young Dale Pollyanna 22P  
Great Granddam of RYA 73Z



Young Dale Pollyanna 30U  
Dam of RYA 73Z



Young Dale Pollyanna 101E  
Daughter of RYA 73Z  
Sold to CMT Farms



Young Dale Pollyanna 38E  
Maternal Sister of RYA 73Z  
Sold to Double Bar D & Dusty Rose

## Black Angus - Heifer Calves

2

DJCC **Lass** 25G

FEMALE JDX 25G 2116838 FEB. 2, 2019



Lass 25G

RING CREEK FLYNN 25A  
**BAR-E-L KING OF COOL 158C**  
BAR-E-L APRIL 20A

DJCC ZORRO 117Z  
**DJCC LASS 18B**  
GEIS LASS 96'12

RING CREEK BURL IVES 88Y  
RING CREEK AMBUSH LADY 43T  
BAR-E-L IRON WILL 32Y  
BAR-E-L APRIL 82X

YOUNG DALE XCALIBER 32X  
YOUNG DALE LADY SANDRA 143U  
HF KODIAK 5R  
GEIS LASS 1'08

BW: 87 lbs.

(PE) BW: 2.5 WW: 47 YW: 80 MM: 19 TM: 43 MCE: 7.5

Another daughter out of Bar-E-L King of Cool. Cool, himself, has great feet and is passing this important trait on to his progeny. Very strong cow family behind this 25G heifer. Tough to let her and 10G go but again, sales management got their way this time!

Consigned By DJ Cattle Co., Brookdale, MB

3

DJCC **Rosebud** 10G

FEMALE JDX 10G 2116836 JAN. 19, 2019



Rosebud 10G

RING CREEK FLYNN 25A  
**BAR-E-L KING OF COOL 158C**  
BAR-E-L APRIL 20A

YOUNG DALE BLACK KNIGHT 202R  
**DJCC ROSEBUD 13X**  
DOUBLE MM ROSEBUD 22N

RING CREEK BURL IVES 88Y  
RING CREEK AMBUSH LADY 43T  
BAR-E-L IRON WILL 32Y  
BAR-E-L APRIL 82X

YOUNG DALE TOUCHDOWN 36M  
YOUNG DALE GRACE 019H  
DOUBLE MM TRAVELLER  
LENLOOK ROSEBUD 4J

BW: 90 lbs.

(PE) BW: 3.6 WW: 39 YW: 67 MM: 19 TM: 39 MCE: 5.5

A Rosebud out of the Cool bull from Bar-E-L. Cool has done a great job here at DJ Cattle Co. This heifer puts it all together in my opinion. She will make a great junior project but more importantly, a solid producing cow. Tough to let her and 25G go, as they are outstanding heifers but again, sales management got their way!

Consigned By DJ Cattle Co., Brookdale, MB

4

SCC **Quality** 5G

FEMALE BDS 5G 2086898 JAN. 25, 2019



Quality 5G

PLAINVIEW LUTTON E102  
**OHL CHECK BOOK 0187C**  
O H L ANGEL 7171

HF TIGER 5T  
**SCC QUALITY 10X**  
SCC 7K QUALITY 116M

EXAR LUTTON 1831  
PLAINVIEW PRIDE C123  
TC FREEDOM 104  
O H L SWEET DREAMS 917J

HF KODIAK 5RW  
HF ECHO 84R  
N.B.A. NORTHERN ASSET 365 7K  
HAPPYVALE ENID QUALITY 92K

BW: 81 lbs.

BW: 1.6 WW: 46 YW: 80 MM: 28 TM: 51 MCE: 8.5

ET calf out of our famous donor, 10X. This mating to Check Book may be the most successful at SCC to date. This will definitely turn into a front pasture cow

Consigned By Stewart Cattle Co., Russell, MB

5

RAMROD **Lady Bate** 929G

FEMALE DTM 929G 2080374 JAN. 9, 2019

PVF INSIGHT 0129  
**PFLC INSIGHT 94D**  
 LEGEND LANE BARDETTA 824U

HOOVER EMPEROR  
**RAMROD LADY BATE 501C**  
 RAMROD LADY BATE 319A

S A V BRILLIANCE 8077  
 PVF MISSIE 790  
 LEGEND LANE REVOLUTION 505  
 PRIME TIME'S 31H BARDETTA 549

SYDGEN C C & 7  
 BLKCP EMPRESS ELLSTON G403  
 R A F WIDE WORLD 920  
 KENBERT CHIEF LADY BATE 40N

BW: 84 lbs.

BW: 2.1 WW: 52 YW: 90 MM: 28 TM: 54 MCE: 4.5

This PFLC Insight 94D female is well-made and well bred. Starting at the ground, wide based, big footed, big boned and sound on the move which expresses her huge quarter and shape to her top, while maintaining a good neck and skull. This female is a brood cow in the making.

Consigned By  
 Ramrod Cattle Co.  
 Medora, MB



PFLC Insight 94D  
 Sire of both Ramrod Lots



Legend Lane Bardetta 824U  
 Paternal Granddam of both Ramrod Lots



Lady Bate 929G

6

RAMROD **Rosebud** 966G

FEMALE DTM 966G 2080395 JAN. 17, 2019

PVF INSIGHT 0129  
**PFLC INSIGHT 94D**  
 LEGEND LANE BARDETTA 824U

YOUNG DALE HOOVER DAM 38Z  
**RAMROD ROSEBUD 435B**  
 RAMROD ROSEBUD 256Z

S A V BRILLIANCE 8077  
 PVF MISSIE 790  
 LEGEND LANE REVOLUTION 505  
 PRIME TIME'S 31H BARDETTA 549

PF HOOVER DAM 041  
 YOUNG DALE GRACE 61X  
 S A V PROVIDENCE 6922  
 DUSTY DAELE ROSEBUD 674S

BW: 84 lbs.

BW: 2.0 WW: 43 YW: 71 MM: 26 TM: 48 MCE: 6.5

These PFLC Insight 94D females are making a statement in the showing, with an older sister winning multiple Jackpots this past summer. He also sired the first five placing heifer calves at the Manitoba Summer Gold Show. 966G was one of these heifer calves. She's really good from any angle you look at her from. Nice skulled, goose necked, which lays into her shoulder nicely. She carries a big square top, big butted, while carrying lots of bone with a good foot. She does like the spotlight of the tanbark as she has seen the winner's circle already.

Consigned By Ramrod Cattle Co., Medora, MB



Rosebud 966G

7

WILBAR **Mayflower** 714G

FEMALE WJD 714G APPLIED FOR JAN. 24, 2019

BROOKING BANK NOTE 4040  
**BROOKING REWIND 6023**  
 BROOKING MAUREEN EMILIE 350

S A V NET WORTH 4200  
**WILBAR MAYFLOWER 48Z**  
 WILBAR MAYFLOWER 634T

CONNEALY EARNAN 076E  
 E A ROSE 918  
 SITZ RIGHT ANSWER 506Y  
 SOO LINE MAUREEN EMILIE 0144

S A V 8180 TRAVELER 004  
 S A V MAY 2410  
 SANDY BAR ADVANTAGE 43M  
 WILBAR MAYFLOWER 70H

BW: 80 lbs.

(PE) BW: 1.8 WW: 45 YW: 76 MM: 22 TM: 45 MCE: 9.0

Wilbar Mayflower 714G is a powerful made female from one of our prominent cow families. We have retained every daughter out of her dam, 48Z. She is the kind of cow that connects well to any mating. We have recently flushed a Tiger Shark daughter of 48Z and will be flushing a Lute granddaughter, Owen's 2018 and 2019 4-H project, in the spring. 714G combines the body and base width of Rewind with the productive femininity of the Mayflowers.

Consigned By Wilbar Cattle Co., Dundurn, SK



Mayflower 714G

# Black Angus - Heifer Calves

8A

JAYMARANDY **Dusty's Grace** 906G

FEMALE JLMA 906G 2112483 JAN. 23, 2019



Dusty's Grace 906G

S A V HARVESTOR 0338  
**SA V CUTTING EDGE 4857**  
 S A V BLACKCAP MAY 5530

S A V HERITAGE 6295  
 S A V EMBLYNETTE 7749  
 B C C BUSHWACKER 41-93  
 S A V MAY 7238

HOOVER DAM  
 P F QUEEN MOTHER 446  
 YOUNG DALE GRACE 169B  
 YOUNG DALE GRACE 107W  
 YOUNG DALE PANARAMA 66T  
 YOUNG DALE GRACE 14P

BW: 76 lbs. ADJ WW: 694 lbs.

BW: 2.9 WW: 51 YW: 89 MM: 26 TM: 52 MCE: 6.5



Young Dale Grace 169B - Dam

These flushmates by Young Dale Grace 169B are quite fantastic heifers. Both females have that extra presence and eye appeal bred directly in from their ultra competitive dam. Most breeders in the Canadian Black Angus breed should be familiar with her as she was the donor that we bought from the incomparable Young Dale Angus program. She went on to win numerous Grand Champion and Reserve Champion banners for three years straight. One year on her own and two years with calves at foot, always representing her division at every championship drive in every summer show or fall major. She has since gone on to raise highly relevant breeding cattle with sons going to Mark Daines, Severtson Land and Cattle and Hawkeye Ranches for a \$36,000 value and \$10,000 respectively. Her first daughter stayed anchor the pen and a flushmate to these two females and the Grace 640D cow will be our number two. The entire cow family has done incredible at laying the foundation of our program. The sire is none other than the powerful \$260,000 S A V Cutting Edge, who's offspring are demanding attention in show rings and in sales throughout North America. Most recently his flushmate was the high selling female in the North Perth Dispersal at \$20,500. Both of these heifers do the fundamentals of foot and leg structure impeccably. They are muscular, attractive and have useful cow presence all over them. Different in their own rights, yet so well matched functionally. We offer you our good "Graces" to do the same for yourself.

Consigned By Jaymarandy Livestock, Beausejour, MB & Dusty Rose Cattle Company, Arcola, SK

8B

JAYMARANDY **Dusty's Grace** 907G

FEMALE JLMA 907G 2112484 JAN. 25, 2019



Dusty's Grace 907G

S A V HARVESTOR 0338  
**SA V CUTTING EDGE 4857**  
 S A V BLACKCAP MAY 5530

S A V HERITAGE 6295  
 S A V EMBLYNETTE 7749  
 B C C BUSHWACKER 41-93  
 S A V MAY 7238

HOOVER DAM  
 P F QUEEN MOTHER 446  
 YOUNG DALE GRACE 169B  
 YOUNG DALE GRACE 107W  
 YOUNG DALE PANARAMA 66T  
 YOUNG DALE GRACE 14P

BW: 92 lbs. ADJ WW: 567 lbs.

BW: 2.9 WW: 51 YW: 89 MM: 26 TM: 52 MCE: 6.5



Jaymarandy Grace 640D  
 Maternal Sister

Consigned By Jaymarandy Livestock,  
 Beausejour, MB  
 & Dusty Rose Cattle Company,  
 Arcola, SK

9

FAIRLIGHT **Ellen** 14G

FEMALE LGN 14G 2117470 MAR. 9, 2019



Ellen 14G

PVF INSIGHT 0129  
**PFLC INSIGHT 94D**  
 LEGEND LANE BARDETTA 824U

S A V BRILLIANCE 8077  
 PVF MISSIE 790  
 LEGEND LANE REVOLUTION 505  
 PRIME TIME'S 31H BARDETTA 549

PLEASANT VALLEY LUTE 1207  
**J SQUARE S ELLEN 715E**  
 J SQUARE S ELLEN 335A

PLAINVIEW LUTTON E102  
 CHERRY KNOLL ELSA 8014  
 TC FREEDOM 104  
 MVF ELLEN 26N

BW: 75 lbs.

(PE) BW: 2.7 WW: 54 YW: 91 MM: 24 TM: 52 MCE: 7.5

The good ones are hard to part with and this one is a testament to that statement. Her dam, J Square S Ellen 715E, was successfully campaigned in 2018 and was admired by many for her depth, width, massive bone and near perfect foot while maintaining extreme eye appeal and femininity. Ellen 14G offers a unique pedigree combining PFLC Insight 94D, the \$49,000 PVF Insight son purchased from Paradise Farms by Ramrod Cattle Company, along with the legendary Pleasant Valley Lute 1207, who needs no introduction to the show industry. 14G is also the product of many elite cow families, including Bardetta, Missie and Forever Lady. Ellen 14G is one that we believe will be an awesome cow but, in the meantime, an ultra competitive show heifer. Ellen 14G and her dam were named Reserve Champion Two Year Old pair at Manitoba Ag Ex 2019.

Retaining right to future flush at buyer's convenience

Consigned By Fairlight Farm, Boissevain, MB

10

LEGAARDEN **Black Lucy** 12G

FEMALE JTLL 12G 2115306 JAN. 26, 2019

S A V HARVESTOR 0338  
**BROOKING STERLING 5045**

XO CROWFOOT DIXIE ERICA 828U

S A V HERITAGE 6295  
S A V EMBLYNETTE 7749  
CROWFOOT 6071S  
CROWFOOT DIXIE ERICA 6422S

SCC BALOO 21Y  
**LEGAARDEN BLABK LUCY 32A**  
JTLL BLACK LUCY 1Y

GEIS BALOO 13'08  
SCC TIBBIE 02S  
20/20 TOUCHDOWN 17W  
JTLL BLACK LUCY 5R

BW: 78 lbs.

BW: 2.2 WW: 50 YW: 85 MM: 25 TM: 50 MCE: 9.0

Sometimes when sale management wants to tour your herd it just doesn't work! So, Chris did a "self guided" tour of my heifers and picked the ones he wanted. Did he pick the best ones? Yah, these two heifers are right off the top. Black Lucy 32A has had two bulls, one that was in the show string and three heifers, 12G and 37F at home as bred and another that went through this sale to Phil Bernie. This heifer will just plain work.

Consigned By Legaarden Livestock, Grandview, MB



Black Lucy 12G

11

LEGAARDEN **Black Lucy** 29G

FEMALE JTLL 29G 2115314 FEB. 20, 2019

20/20 FREE RIDE 8A  
**20/20 FREE RIDE 26D**  
20/20 LADY ANN 17Z

SOUTHLAND FREE RIDE 68R  
DMM MISS ESSENCE 31R  
CONNEALY THUNDER  
SOUTH BORDER LADY ANN 023

SANDY BAR FORT ROCK 99Z  
**LEGAARDEN BLACK LUCY 19C**  
LEGAARDEN BLACK LUCY 8A

GLENDAR FORT ROCK 18X  
BROOKE'S EDGE HEROINE 7U  
SCC BALOO 21Y  
JTLL BLACK LUCY 17Y

BW: 85 lbs.

BW: 2.6 WW: 51 YW: 86 MM: 29 TM: 54 MCE: 5.0

It's not always the best to buy from your friends or family, so when I purchased 20/20 Free Ride from my brother, you know he had to be good! This is the first heifer to sell from him as I kept last year's as replacements based on the maternal strengths of him. Cross Free Ride with 19C, who's first calf came through the Keystone sale and you have the makings of a great one! 29G will be the cow maker!

Consigned By Legaarden Livestock, Grandview, MB



Black Lucy 29G

12

EASTONDALE JE **Blackcap** 903'19

FEMALE VK 903G 2114958 FEB. 11, 2019

BARSTOW CASH  
**BARSTOW BANKROLL B73**  
BARSTOW MISS DIANNA Z25

SITZ DASH 10277  
BARSTOW QUEEN W16  
CAR EFFICIENT 534  
BARSTOW MISS DIANNA X128

TC ABERDEEN 759  
**2J BLACKCAP 1Z**  
2J BLACKCAP 37M

C R A BEXTOR 872 5205 608  
TC BLACKBIRD 4034  
KMA FOURTRAX 5134  
2J BLACKCAP 18K

BW: 85 lbs.

BW: 0.3 WW: 57 YW: 107 MM: 23 TM: 51 MCE: 7.5

This a deep sided, thick topped brood cow prospect. Her dam is a very good cow bred by 2J Angus. The Blackcap 1Z cow is a beauty to look at and her production record is strong and has reached Elite cow status in the Canadian herd book. Nice to be back at the Keystone Sale with a very strong female like this. Recently named Res. Intermediate heifer calf champion at Manitoba Ag Ex 2019.

Consigned By Eastondale Angus, Wawota, SK



Blackcap 903'19

# Black Angus - Heifer Calves

13

NBCC **Rosebud** 11G

FEMALE NBC 11G 2113685 FEB. 11, 2019



Rosebud 11G

S A V HARVESTOR 0338  
**EF TITAN 545**  
 EXAR BLACKBIRD 5877

S A V HERITAGE 6295  
 S A V EMBLYNETTE 7749  
 SCHURRTOP MC 2500  
 EXAR BLACKBIRD 4448

SCC BALOO 6Z  
**NBCC ROSEBUD 8B**  
 JUSTAMERE 9455 ROSEBUD 393N

GEIS BALOO 13'08  
 SCC TIBBIE 51S  
 EXAR KLONDIKE 9455  
 BRANDEIS ROSEBUD 2X

BW: 80 lbs.

BW: 2.3 WW: 53 YW: 89 MM: 23 TM: 50 MCE: 6.5

We have been very pleased with the consistency in quality and type of the calves sired by EF Titan 545, the 2016 RBC Supreme Champion Bull. Rosebud 11G is a full sister to the popular heifer we consigned to the sale last year. Our high selling bull last spring, Titan 17F, was also out of the productive Rosebud cow family and selected by Eton Six Cattle of Snowflake, MB.

Consigned By NB Cattle Co., Eddystone, MB

14

NBCC **Black Woodlady** 8G

FEMALE NBC 8G 2113683 FEB. 7, 2019



Black Woodlady 8G

S A V HARVESTOR 0338  
**EF TITAN 545**  
 EXAR BLACKBIRD 5877

S A V HERITAGE 6295  
 S A V EMBLYNETTE 7749  
 SCHURRTOP MC 2500  
 EXAR BLACKBIRD 4448

SHIPWHEEL MONTANA 2600  
**N7'S BLACK WOODLADY 54D**  
 N7'S LADY WORTH 5W

S CHISUM 6175  
 DR J MS WIDE TRACK 374 M15  
 S A V NET WORTH 4200  
 N7'S BLK WOOD LADY EXT 91K

BW: 72 lbs.

BW: 3.4 WW: 61 YW: 106 MM: 20 TM: 50 MCE: 7.5

Another fancy, stout and hairy daughter of EF Titan 545 out of a dependable, young Shipwheel Montana cow. Her first calf made the bull sale last year, followed by a pair of good Titan heifers while settling to her AI service every year. The Black Woodlady's have been a cornerstone cow family in the N7 herd over the years. With Showdown coming to Manitoba, 8G would make a good junior project while having a tremendous upside for production thereafter.

Consigned By NB Cattle Co., Eddystone, MB

15

CRANBERRY CREEK **Woodylady** 945

FEMALE NEU 945G 2113540 APR. 3, 2019



Woodylady 945

S A V TEN SPEED 3022  
**CRANBERRY CREEK TEN SPEED 705**  
 CRANBERRY CREEK LYNN 72Z

A A R TEN X 7008 S A  
 S A V MADAME PRIDE 1134  
 S A V 004 DENSITY 4336  
 CRANBERRY CRK LYNN 824U

S A V ANGUS VALLEY 1867  
**N7'S BLACK WOODLADY 7D**  
 N7'S BLACKWOOD LADY 16B

S A V IRON MOUNTAIN 8066  
 S A V MAY 2397  
 BELVIN TRES MARIAS PATRON 205  
 N7'S BLKWOODLADY 19Z

BW: 89 lbs. ADJ WW: 738 lbs.

BW: 0.7 WW: 60 YW: 106 MM: 24 TM: 54 MCE: 11.5

This fancy heifer has done very well. Granddaughter of S A V Ten Speed and out of a S A V Angus Valley we purchased at the Keystone from N7.

Consigned By Cranberry Creek Angus, Boissevain, MB



16

CRANBERRY CREEK **Blackbird** 931

FEMALE NEU 931G 2094963 JAN. 23, 2019

YOUNG DALE XCALIBER 32X  
**CRANBERRY CREEK XCALIBER 720**  
 CRANBERRY CRK ELLANA 116

YOUNG DALE KNOCK OUT 134U  
 BROOKMORE TIBBIE 222T  
 CRANBERRY CRK NETWORTH 803U  
 CRANBERRY CRK ELLANA 224M

S A V FINAL ANSWER 0035  
**CRANBERRY CRK BLACKBIRD 106**  
 CRANBERRY CREEK BLACKBIRD 908W

SITZ TRAVELER 8180  
 S A V EMULOUS 8145  
 CRANBERRY CREEK NEW DAY 705T  
 CRANBERRY CRK BLACKBIRD 317N

BW: 83 lbs. ADJ WW: 615 lbs.

BW: 2.2 WW: 53 YW: 88 MM: 19 TM: 46 MCE: -2.5

We are very excited about what the Barry Young Xcaliber bloodline is doing in our herd. Dam is a direct daughter of Final Answer.

Consigned By Cranberry Creek Angus, Boissevain, MB



Blackbird 931

17

ANGUS VALLEY **Queenette** 21G

FEMALE WFM 21G 2088614 JAN. 1, 2019

S A V RENOWN 3439  
**SCHIEFELBEIN IBULL 3415**  
 FROSTY UPWARD 1100

RITO 707 OF IDEAL 3407 7075  
 S A V BLACKCAP MAY 4136  
 SITZ UPWARD 307R  
 FROSTY ND 1407 0297

GEIS BALOO 13'08  
**SCC QUEENETTE 29Z**  
 TVA QUEENETTE 8U

HF KODIAK 5R  
 KBJ QUEEN 461L  
 TVA VENTURE FORWARD 904P  
 MVF QUEENETTE 269R

BW: 96 lbs.

BW: 4.9 WW: 65 YW: 113 MM: 25 TM: 58 MCE: 7.0

Queenette is a powerful performance individual. You can build a herd on this kind. Her dam, 29Z, is an excellent milking, moderate framed female whose daughter was in the Keystone Classic Sale in 2017, selling to Topview Acres. Her sire, IBull, was used on three cows and all three are powerhouses.

Consigned By Angus Valley Farm, Manitou, MB



Queenette 21G

18

MADSEN **Pride** 19G

FEMALE TMF 19G 2090684 MAR. 1, 2019

KBJ BODY BUILDER 295B  
**ATLASTA BODYBUILDER 30D**  
 ATLASTA MISS DESIGN 87B

MWC BODY BUILDER 30Y  
 KBJ ERELITE 21R  
 CONNEALY CONSENSUS 7229  
 ATLASTA BB OPERA 057T

PF HOOVER DAM 041  
**YOUNG DALE PRIDE 157B**  
 YOUNG DALE PRIDE 72T

HOOVER DAM  
 P F QUEEN MOTHER 446  
 S A V NET WORTH 4200  
 MERIT PRIDE 3230

BW: 83 lbs.

(PE) BW: 1.8 WW: 41 YW: 72 MM: 20 TM: 40 MCE: 7.5

Just a March calf here, out of our Atlasta Bodybuilder bull who worked very well for us. Her dam is a model Angus cow.

Consigned By Madsen Angus Arden, MB



Young Dale Pride 157B Dam



Pride 19G

# Black Angus - Heifer Calves

19

HMM **Lucretia** 4G

FEMALE HMM 4G APPLIED FOR FEB. 1, 2019



Lucretia 4G

LD CAPITALIST 316  
**MUSGRAVE 316 STUNNER**  
 MCATL BLACKBIRD 831-1378

MERIT SHARP DRESSED MAN 4133  
**RAMROD LUCRETIA 718E**  
 RAMROD LUCRETIA 339A

CONNEALY CAPITALIST 028  
 LD DIXIE ERICA 2053  
 MCATL PURE PRODUCT 903-55  
 MCATL BLACKBIRD 1378-573

DAINES HEAVY SI 57Z  
 MERIT SOCIALITE 7024  
 RAMROD NO FEAR 921W  
 RAMROD LUCRETIA 098X

BW: 78 lbs.

(PE) BW: 1.6 WW: 55 YW: 94 MM: 24 TM: 51 MCE: 9.5

Out of a Keystone Classic graduate of 2018. Miss Lucretia 4G is a thick, easy doing female who has been a standout since birth.

Consigned By Madsen Angus, Arden, MB

20

MAINSTREAM **Anne** 1G

FEMALE MSG 1G 2115898 JAN. 31, 2019



HLC 101 Cross Fire 569C - Sire

SANKEYS JUSTIFIED 101  
**HLC 101 CROSS FIRE 569C**  
 JL CHARISE 3159

S A V BRILLIANCE 8077  
**PFLC ANNE 39B**  
 BABY BLACK LO ANNE

SANKEYS LAZER 609 OF 6N  
 SANKEYS ERICA 525  
 S A V HARVESTOR 0338  
 JUSTAMERE 0405 CHARISE 361N

S A V BISMARCK 5682  
 S A V BLACKCAP MAY 5270  
 B C LOOKOUT 7024  
 LEGEND LANE ANNE 3000C 609

BW: 63 lbs.

BW: 0.6 WW: 46 YW: 78 MM: 21 TM: 44 MCE: 3.5

Anne 39B's progeny are no stranger to the Keystone Classic, with her first calf selling in the 2016 sale. Anne 1G is a fancy heifer calf that has caught our eye since the day she was born! Her dam was purchased from Paradise Farms in the In It To Win It Sale and has done nothing but good since day one. Her sire, HLC 101 Cross Fire 569C, is a bull we own with Hollinger Land & Cattle. He was Senior Champion and Reserve Grand Champion Bull at the Royal in 2017. His calves have performance, style and are structurally sound in their makeup. Take advantage of the opportunity to own one of the first Cross Fire calves to sell.

Consigned By Mainstream Genetics, Watrous, SK

21

MAR MAC **Cassidy** 98G

FEMALE KOF 98G 2089613 FEB. 13, 2019



Cassidy 98G

HA COWBOY UP 5405  
**HF TOMAHAWK 229E**  
 HF MAYFLOWER 191Z

MAR MAC BLACK RIDGE 15B  
**MAR MAC CASSIDY 90D**  
 MCRAE'S CASSIDY 111W

HA OUTSIDE 3008  
 HA BLACKCAP LADY 1602  
 HF TIGER 5T  
 HF MAYFLOWER 78P

COLE CREEK CEDAR RIDGE 1V  
 MCRAES BRIDGET 125T  
 JUSTAMERE 2466 TEMPO 192R  
 MCRAE'S CASSIDY 62P

BW: 84 lbs.

BW: 3.1 WW: 52 YW: 103 MM: 24 TM: 50 MCE: 2.5

The first Tomahawk daughter to sell. Tomahawk has left a strong set of bulls and females and some outcross genetics with Cowboy Up. Tomahawk's dam is the mother of the HF Alcatraz bull that topped the Hamilton Farms Bull Sale. Cassidy has proven maternal genetics in the Cassidy and Bridget cow family. **Cassidy was class winner at Ag Ex 2019.** Juniors, if you are looking for a fancy heifer calf for the Canadian Junior Angus Showdown in Brandon, here she is! We feel very strongly that youth are our future. If at Showdown or Manitoba Roundup your heifer is Class Winner you receive \$100, Division Champion \$250, Grand Champion Female \$500 to maximum of \$500. Don't miss out!

Consigned By Mar Mac Farms, Brandon, MB

22

RCR **Winnie** 25G

FEMALE RCR 25G 2116839 FEB. 13, 2019

BAR-E-L NATURAL LAW 52Y  
**BAR-E-L ALL STAR 7A**  
 BAR-E-L BLACKCAP 4X

S A V BISMARCK 5682  
 BAR-E-L MAGNOLIA 143K  
 HF TIGER 5T  
 BAR-E-L BLACKCAP 29N

DOUBLE AA OLD POST BANDOLIER  
**RCR'S EXT PAYTON 8X**  
 BLACK ENVY EXT PAYTON 121P

DOUBLE AA BLACKMAN 252'96  
 DOUBLE AA ANNIE K 548'99  
 N BAR EMULATION EXT  
 LORRUST KVC WINNIE 121L

BW: 78 lbs.

BW: 2.4 WW: 42 YW: 74 MM: 24 TM: 44 MCE: 10.0

Here's a stylish heifer that was slated for the sale as soon as she was born. The Winnie cow family always produces flashy "EXT style" females that are angular in shape, with near perfect udders and good feet. A half sister to 25G sold to Anderson Cattle Co. in 2017's Keystone Sale. Her first year she raised a bull calf that will be featured in their sale pen. In 2015, we sold another Winnie heifer calf to Blairs.Ag for \$6,000. Not only does this female line have an excellent track record, 25G is out of the Bar-E-L All Star 7A, who's raising some of the best females we've ever had! Don't miss your chance with this gem!

Consigned By Right Cross Ranch, Kisbey, SK



Winnie 25G

23

SUNNY GROVE **Lucy** 1G

FEMALE DLR 1G 2089589 JAN. 15, 2019

CONNEALY ARMORY  
**CONNEALY BLACKHAWK 6198**  
 PRECIOUS OF CONANGA 380X

CONNEALY ARSENAL 2174  
 EBBA OF CONANGA 808  
 CONNEALY CONSENSUS 7229  
 JMC PRECIOUS LAYLA 8390 3303

MAR INNOVATION 251  
**BELL BLACK LUCY 16E**  
 BELL BLACK LUCY 16W

CONNEALY IMPRESSION  
 MAR FINAL KAHUNA 856  
 MOHNEN DYNAMITE 1356  
 BELL BLACK LUCY 5R

BW: 78 lbs.

BW: 1.7 WW: 70 YW: 127 MM: 27 TM: 62 MCE: 8.0

This daughter of Connealy Blackhawk is impressive with exceptional length of spine and growth. Her first calf dam did a great job raising her and with the addition of Blackhawk as her sire, I think she will make a tremendous cow also.

Consigned By Sunny Grove Angus, Radville, SK



Lucy 1G

24

SUNNY GROVE **New Design** 20G

FEMALE DLR 20G 2105112 FEB. 7, 2019

ELLINGSON PLATEAU 1155  
**ELLINGSON TOP SHELF 5050**  
 EA EMBLYNETTE 9203

LT TERRITORY 5824 OF EA  
 EA BLACKCLASS 6938  
 S A V FINAL ANSWER 0035  
 EA EMBLYNETTE 447

B C LOOKOUT 7024  
**LIMESTONE NEW DESIGN X320**  
 G A R 1407 NEW DESIGN 982

O C C LEGEND 616L  
 GIBBET HILL MIGNONNE E37  
 BON VIEW NEW DESIGN 1407  
 G A R PRECISION 1559

BW: 82 lbs.

BW: -0.2 WW: 52 YW: 92 MM: 21 TM: 47 MCE: 9.5

An ET daughter of the popular Ellingson Top Shelf. Her dam is an outstanding daughter of B C Lookout that always catches your eye when touring our herd. Her granddam, 1407 New Design 982, was the \$100,000 valued donor for Express Ranches and Traynhams of Oregon. 20G is moderate framed with excellent phenotype and the only way we decided to part with her was that we have three more flush sisters at home. Be sure to check her out!

Consigned By Sunny Grove Angus, Radville, SK



New Design 20G

# Black Angus - Heifer Calves

25

OSSAWA **Heidi** 242G

FEMALE OAM 242G 2088274 JAN. 29, 2019



Heidi 242G

NYK GRACELAND 39B  
**NYK PROMISED LAND 6E**  
 N7'S EVA MARIAS 12A

BASIN EXCITEMENT  
**OSSAWA OPAL 873C**  
 OSSAWA HOPE 766A

N7'S ELVIS 9Y  
 SOO LINE GEORGINA 1101  
 BELVIN TRES MARIAS PATRON 205  
 MVF MISS EVA 195S

BASIN EXPEDITION R156  
 BASIN LADY S532 AK  
 CFS LUKE 75X  
 OSSAWA HOPE 421S

BW: 92 lbs.

BW: 4.0 WW: 52 YW: 92 MM: 21 TM: 47 MCE: 8.0

Heidi 242G is a long framed, deep ribbed female out of a Basin Excitement dam and NYK Promised Land as her sire. We retained a maternal half-sister who has raised an impressive Vin-Mar Johnny Cash son this year.

Consigned By Ossawa Angus Farm, Marquette, MB

These heifers are both offspring of NYK Promised Land 6E sire. His first crop of calves have us very impressed. We cannot wait to see how they will perform as mothers. These girls' grandams are half-sisters as well out of the CFS Luke 75X bull. Containing similar genetics, you can see that each of these heifers have their own unique style.

26

OSSAWA **Rachel** 255G

FEMALE OAM 255G 2088284 FEB. 9, 2019



Rachel 255G

NYK GRACELAND 39B  
**NYK PROMISED LAND 6E**  
 N7'S EVA MARIAS 12A

JINDRA DOUBLE VISION  
**OSSAWA JENNA 878C**  
 OSSAWA GRACIE 783A

N7'S ELVIS 9Y  
 SOO LINE GEORGINA 1101  
 BELVIN TRES MARIAS PATRON 205  
 MVF MISS EVA 195S

CONNEALY REFLECTION  
 HOFF RACHEL 8312 405  
 CFS LUKE 75X  
 OSSAWA JANICE 151K

BW: 80 lbs.

BW: 2.8 WW: 47 YW: 87 MM: 20 TM: 44 MCE: 7.0

Rachel 255G is a very classy looking female with a docile personality that was a joy to work with. She is out of a Jindra Double Vision dam and the NYK Promised Land sire.

Consigned By Ossawa Angus Farm, Marquette, MB

27

WILD WEST **Pride** 11G

FEMALE WJK 11G 2083919 JAN. 21, 2019



Pride 11G

G A R GRID MAKER  
**S A V BISMARCK 5682**  
 S A V ABIGALE 0451

MOGCK BULLSEYE  
**WILD WEST PRIDE 103C**  
 HF PRIDE 9A

G D A R TRAVELER 044  
 G A R PRECISION 2536  
 SCHOENES FIX IT 826  
 S A V ABIGALE 6062

MOGCK SURE SHOT  
 MOGCK MARY 1255  
 HF REBEL 53Y  
 HF PRIDE 69Y

BW: 63 lbs.

BW: 0.4 WW: 57 YW: 98 MM: 25 TM: 54 MCE:

Here is a fancy daughter of the breed legend, S A V Bismarck. Her dam is a flush sister to the dam of Lot 31A and Lot 31B. From our great donor cow, HF Pride 9A. This very attractive heifer will make a great junior project or a great mother cow for her new owner. Don't miss her on sale day!

Consigned By Wild West Angus, Altona, MB

28

WILD WEST **Lady** 4G

FEMALE WJK 4G 2083812 JAN. 1, 2019

S A V 8180 TRAVELER 004  
**SA V 004 DENSITY 4336**  
 S A V MAY 7238

SITZ TRAVELER 8180  
 BOYD FOREVER LADY 8003  
 LEACHMAN RIGHT TIME  
 S A R PROSPECTOR MAY 9124

S A V ELIMINATOR 9105  
**PEAK DOT LADY 789A**  
 LADY OF PEAK DOT 807X

RITO 707 OF IDEAL 3407 7075  
 S A V ABIGALE 5646  
 S A V 004 PREDOMINANT 4438  
 LADY OF PEAK DOT 534M

BW: 91 lbs.

BW: 5.6 WW: 54 YW: 95 MM: 21 TM: 48 MCE: 2.0

This heifer has been a favorite since birth. She is a very easy fleshing, stout made heifer, sired by the all-time leading female maker, S A V 004 Density. Out of a gorgeous, easy keeping Eliminator cow. This heifer will be a front pasture cow and should be an outstanding producer.

Consigned By Wild West Angus, Altona, MB



Lady 4G

29

BASKM **Rosebud** 1G

FEMALE MGB 1G 2113070 JAN. 14, 2019

S A V ELIMINATOR 9105  
**JL AUTHORITY 2098**  
 JL LADY 8026

RITO 707 OF IDEAL 3407 7075  
 S A V ABIGALE 5646  
 S A V FOUR SEASONS 5231  
 JL LADY 06 43

S A V RESOURCE 1441  
**BASKM ROSEBUD 33D**  
 HF ROSEBUD 68Y

RITO 707 OF IDEAL 3407 7075  
 S A V BLACKCAP MAY 4136  
 HF KODIAK 5R  
 2HR ROSEBUD 47P

BW: 91 lbs. 205 DW: 595 lbs.

BW: 4.0 WW: 54 YW: 90 MM: 22 TM: 48 MCE: 1.0

We are very pleased to be able to offer our first female genetics to the Keystone Klassic sale. BASKM Rosebud 1G is the type of female we strive to produce. She's long spined, has that maternal depth of body and rib shape, while standing on a great set of feet and legs with lots of extension through her front end. This heifer is definitely not lacking any power with the maternal lineage she has behind her. S A V Resource 1441 and HF Kodiak 5R on the dam side and S A V Eliminator on the sire side. JL Authority 2098 has raised some very good calves for Glasman Farms and is doing a topnotch job at our place with lots of females retained in our herd. Rosebud's granddam goes back to a cow we bought from Hamilton Farms a couple of years ago and has always been one of our top producers. Her 2018 Bank Note son will highlight our bull pen this year. Rosebud has a great temperament and would work well for any junior for their first junior project, or a seasoned showman wanting a competitive show heifer.

Consigned By BASKM Land & Cattle Inc., Riding Mountain, MB



Rosebud 1G

30

D DONALD **Prairie Oak** 1G

FEMALE DEV 1G 2090788 JAN. 1, 2019

BASIN EXCITEMENT  
**D DONALD ELEMENT 2D**  
 ARY LASS TRADER 10B

BASIN EXPEDITION R156  
 BASIN LADY S532 AK  
 XO CROWFOOT HONESTY 1490Y  
 XOCROWFOOT LASS TRADER 27ZZ

FAIRHOLME NETWORK 136W  
**WINCHESTER 1Z**  
 LEE OF PRAIRIE OAK 1'03

S A V NET WORTH 4200  
 M DOUBLE B ANNIE 102L  
 AVALAWN GERONIMO 4'96  
 LEE OF PRAIRIE OAK 26'98

BW: 88 lbs. ADJ WW: 731 lbs.

BW: 3.0 WW: 52 YW: 84 MM: 20 TM: 39 MCE: 9.5

D Donald Prairie Oak 1G is a moderate framed, deep bodied and very correct female. I believe she might be one of the best females ever produced here so far. Her full sister sold through this sale last year to HBH Angus.

Consigned By Diamond D Ranch, Rossendale, MB



Prairie Oak 1G

# Black Angus - Bred Heifers

## 31A WILD WEST **Pride** 3F

FEMALE WJK 3F 2018728 JAN. 2, 2018



Pride 3F

GAR-EGL PROTEGE  
**PA FORTITUDE 2500**  
G G CLARA 0171

MOGCK BULLSEYE  
**WILD WEST PRIDE 101C**  
HF PRIDE 9A

RITO 112 OF 2536 RITO 616  
L B 6807 ISABEL 339  
SYDGEN C C & 7  
G G CLARA 7192

MOGCK SURE SHOT  
MOGCK MARY 1255  
HF REBEL 53Y  
HF PRIDE 69Y

BW: 73 lbs.

**BW: 1.5 WW: 61 YW: 108 MM: 23 TM: 54 MCE: 12.0**

Maternal sisters out of a young Bullseye daughter who is well on her way to becoming an outstanding cow. These heifers go back to one of our favorite donor cows, HF Pride 9A. She is a very fertile, consistent producer. 3F is a long sided, broody Fortitude heifer. This heifer is loaded with maternal power and will be a great addition to any herd.

**AI bred to Basin Excitement on May 15, 2019. No pasture exposure.**

Consigned By Wild West Angus,  
Altona, MB

# Selling Choice

## 31B WILD WEST **Pride** 7G

FEMALE WJK 7G 2083918 JAN. 2, 2019



Pride 7G

BASIN PAYWEIGHT 006S  
**BASIN PAYWEIGHT 1682**  
21AR O LASS 7017

MOGCK BULLSEYE  
**WILD WEST PRIDE 101C**  
HF PRIDE 9A

VERMILION PAYWEIGHT J847  
BASIN LUCY 3829  
HARB PENDLETON 765 J H  
21AR O LASS F24A

MOGCK SURE SHOT  
MOGCK MARY 1255  
HF REBEL 53Y  
HF PRIDE 69Y

BW: 67 lbs.

**BW: 1.4 WW: 65 YW: 114 MM: 31 TM: 64 MCE: 8.0**

7G is a powerful, extremely deep sided heifer sired by Payweight 1682. I'm very impressed with our Payweight 1682 calves. They come small and have lots of grow. Note: Her EPDs are extremely well balanced. Don't miss this unique opportunity to own a 1682.

Consigned By Wild West Angus, Altona, MB

## 32 WILBAR **Pride** 574F

FEMALE WJD 574F 2054882 FEB. 20, 2018



Pride 574F

BROOKING BANK NOTE 4040  
**BROOKING REWIND 6023**  
BROOKING MAUREEN EMILIE 350

DMM TRADE SECRET 36X  
**WILBAR PRIDE 23Z**  
WILBAR PRIDE 845U

CONNEALY EARNAN 076E  
E A ROSE 918  
SITZ RIGHT ANSWER 506Y  
SOO LINE MAUREEN EMILIE 0144

GUMBO GULCH CREED 94S  
SOUTHERN OX BLACKBIRD 12J  
O G L BATTLE CRY 427 128  
WILBAR PRIDE 907N

BW: 98 lbs. ADJ WW: 634 lbs.

**BW: 3.9 WW: 41 YW: 69 MM: 21 TM: 42 MCE: 5.0**

Wilbar Pride 574F comes right off the top of our replacement pasture. She was the #1 pick of every sale manager that toured this summer. Lucky for Chris, he was the first one to see her. Her sire, Rewind, stamps his daughters with big time depth of rib and brood cow look, all in a stylish, wedge shaped look. We are very excited about the position Rewind daughters will play in the future of our cow herd. Her dam is a powerful Trade Secret daughter known for adding excellent udder quality and muscle. The granddam is a perennial favorite and is still in production at 11 years of age. The service sire is our new herd bull from Conley Angus in Oklahoma. He is a Stevenson Turning Point out of a Net Worth donor cow.

**AI bred to Conley South Point 8362 on April 24, 2019. Pasture exposed to Conley South Point 8362 from May 13 to June 30, 2019.**

Consigned By Wilbar Cattle Co., Dundurn, SK

33

SCC Lady Blossom 2F

FEMALE BDS 2F 2016867 JAN. 20, 2018

LLB 184S BANDO 502  
**SCC BANDO 51A**  
 SCC QUALITY 10X

LLB 2166 BANDO 184S  
 LLB BLACKBIRD 315N  
 HF TIGER 5T  
 SCC 7K QUALITY 116M

STYLES UPGRADE J59  
**SCC LADY BLOSSOM 25A**  
 SCC LADY BLOSSOM 1R

SITZ UPWARD 307R  
 PLAINVIEW LASSIE 71B  
 VERMILION DATELINE 7078  
 BELVIN LADY BLOSSOM 23'98

BW: 81 lbs.

BW: 1.0 WW: 43 YW: 77 MM: 26 TM: 48 MCE: 8.0

A nice, honest heifer just pulled in off pasture on October 13. Sire goes back to our foundation donor cow, 10X, who is also the dam of our heifer calf in this sale. Due February to our new herd sire.

Pasture exposed to 20/20 1 Iron 30F from April 23 to May 17, 2019.

Consigned By Stewart Cattle Co., Russell, MB



Lady Blossom 2F

34

ACC Queen Ruth 42F

FEMALE BAC 42F 2034249 JAN. 15, 2018

BARSTOW CASH  
**KR CASH 4003**  
 SUMMITCREST ELBA 1W01

SITZ DASH 10277  
 BARSTOW QUEEN W16  
 S/C CONSTELLATION 06S6  
 SUMMITCREST ELBA 1M17

S CHISUM 0206  
**CRESCENT CREEK QUEEN RUTH104A**  
 CRESCENT CREEK QUEEN RUTH 14W

S CHISUM 6175  
 S VANNA 358  
 B C C-J C L EMBLAZON 038-287  
 CRESCENT CREEK QUEEN RUTH 56T

BW: 84 lbs. ADJ WW: 755 lbs. ADJ YW: 1088 lbs.

BW: 1.8 WW: 54 YW: 87 MM: 23 TM: 50 MCE: 9.0

This is pretty cool, we purchased this bred heifer's dam from the Keystone Klassic in 2013. She raised a couple sale bulls and then had 42F who was a star all summer. We turned a few sale managers down who wanted her in their sales as a calf. Since then we have flushed her dam and the resulting calves are looking fantastic. Her brother, ACC Buckeroo 39G, was part of our pen of bulls that was displayed at Harvest Showdown and Agribition. This bred heifer is super easy fleshing, thick, stylish and bred to the nines. She carries service to HA Stirling 6170, which should make for very marketable progeny.

AI bred to HA Stirling 6170 on April 22, 2019. Pasture exposed to Crescent Creek Momentum 173D from May 17 to June 22, 2019. Safe to AI.

Consigned By Anderson Cattle Company Inc., Swan River, MB



Queen Ruth 42F

35

MAINSTREAM Dolly 4F

FEMALE MSG 4F 2063840 FEB. 12, 2018

EXAR LUTTON 1831  
**STYLES LUT P301**  
 PLAINVIEW PRIDE C123

NORTHERN IMPROVEMENT 4480GF  
 EXAR SARAS DREAM 9809  
 ROTH FAMOUS 051  
 PLAINVIEW PRIDE 2T

SOO LINE YELLOWSTONE 9286  
**ROYAL S PRIDE DOLLY 12A**  
 ROYAL PRIDE DOLLY 46P

SOO LINE YELLOWSTONE 6344  
 SWENCO ENCHANTRESS 20N  
 INNIWAY ROYCE 203 018  
 ROYAL PRIDE DOLLY 29E

BW: 70 lbs.

BW: 1.9 WW: 44 YW: 74 MM: 19 TM: 41 MCE: 11.0

Dolly is a moderate framed, deep ribbed female that is backed by performance genetics on both the top and bottom side. Styles Lut is a bull that has really left his trademark in our herd and Royal S Pride Dolly 12A is a no miss kind of cow. A full sister sold in the 2017 Keystone Klassic Sale to Naomi Best, Clay Hills Livestock. Dolly 4F is bred to an Insight son we purchased from Premier Livestock. He is out of the Bardetta 4A cow, that has made an impact for both Premier Livestock and Six Mile Ranch. This is sure to be an exciting mating for her new owner!

Pasture exposed to Premier Hasson Forsight 839 from May 17 to July 4, 2019.

Consigned By Mainstream Genetics, Watrous, SK



Premier Hasson Forsight 839 - Service Sire

# Black Angus - Bred Heifers

36

HBH **Bandolier Lass** 30F

FEMALE HBH 30F 2033016 JAN. 14, 2018



Bandolier Lass 30F

MOGCK BULLSEYE  
**BRUNS BLASTER**  
 BALDRIDGE BLACKBIRD 11 BAF

MOGCK SURE SHOT  
 MOGCK MARY 1255  
 CONNEALY RIGHT ANSWER 746  
 BALDRIDGE BLACKBIRD 549 BAF

CONNEALY THUNDER  
 KEMBAR EILEEN 53P  
 MVF EXTRA 85R  
 HBH BANDOLIER LASS 14R

BW: 78 lbs.

BW: 2.0 WW: 56 YW: 102 MM: 31 TM: 59 MCE: 10.0

A very attractive, deep sided Bruns Blaster daughter with an excellent hair coat. 30F is easy to pick out! Bred to HF Stature 87D, the calving ease bull of choice at HBH, should really work. Check out Lot 37 if you want to see what Stature can do!

AI bred to HF Stature 87D on April 25, 2019. Pasture exposed to HBH Fortune 10F from April 30 to June 14, 2019. Ultrasounded safe to AI date.

Consigned By HBH Angus Farms Inc., Oak River, MB

37

HBH **Lucy** 45F

FEMALE HBH 45F 2033027 JAN. 16, 2018



Lucy 45F

KR STATUS 4267  
**HF STATURE 87D**  
 HF MAYFLOWER 17X

KOUPALS B&B IDENTITY  
 WK QUEEN 1423  
 HF TIGER 5T  
 HF MAYFLOWER 67U

BASIN EXCITEMENT  
**HBH LUCY 1D**  
 HBH LUCY 493B

BASIN EXPEDITION R156  
 BASIN LADY S532 AK  
 TJF 20X AMBUSH 14Z  
 HBH LUCY 48Y

BW: 70 lbs. ADJ WW: 750 lbs.

BW: -0.6 WW: 59 YW: 105 MM: 32 TM: 62 MCE: 9.0

My pick of the heifers! I just love this heifer, she is as tanky as they come. Very deep bodied, great spring of rib, wide top, clean front and a great hip. I really think 45F will make a tremendous cow! She not only is great to look at in person, but check out her EPDs. A -0.6 BW, top performance EPDs and a TM of 62. Mark 45F high on your list!

AI bred to POSS Element 215 on April 17, 2019. Pasture exposed to JL Admire 8004 from April 30 to June 14, 2019. Ultrasounded safe to AI date.

Consigned By HBH Angus Farms Inc., Oak River, MB

38

HBH **Tibbie** 187F

FEMALE HBH 187F 2033161 FEB. 7, 2018



Tibbie 187F

KR STATUS 4267  
**HF STATURE 87D**  
 HF MAYFLOWER 17X

KOUPALS B&B IDENTITY  
 WK QUEEN 1423  
 HF TIGER 5T  
 HF MAYFLOWER 67U

SPRUCE VIEW TEN X 18B  
**HBH TIBBIE 129D**  
 GREENBUSH TIBBIE 15W

A A R TEN X 7008 S A  
 SPRUCE VIEW BLACKBIRD 41Z  
 S A V BISMARCK 5682  
 GREENBUSH TIBBIE 49T

BW: 70 lbs. ADJ WW: 754 lbs.

BW: 1.0 WW: 56 YW: 105 MM: 32 TM: 60 MCE: 8.0

Another HF Stature 87D daughter with a great set of EPDs that is a moderate, smooth made and with a clean front end. 187F should make a nice, moderate cow that is easy to keep and will raise big calves.

Pasture exposed to HBH Fortune 10F from April 30 to June 14, 2019. Observed bred on May 14, 2019.

Consigned By HBH Angus Farms Inc., Oak River, MB



39

HBH **Tibbie** 60F

FEMALE HBH 60F 2033046 JAN. 19, 2018

HOOVER DAM  
**MUSGRAVE BOULDER**  
 MILL BRAE SA JAUNTY 3079

SYDGEN C C & 7  
 ERICA OF ELLSTON C124  
 SITZ ALLIANCE 6595  
 MILL BRAE EXT JAUNTY 8068

S A V FINAL ANSWER 0035  
**BROOKMORE TIBBIE 207Y**  
 BROOKMORE TIBBIE 242T

SITZ TRAVELER 8180  
 S A V EMULOUS 8145  
 BROOKMORE DIRECTION 208R  
 BROOKMORE TIBBIE 63R

BW: 80 lbs. ADJ WW: 629 lbs.

BW: 1.2 WW: 53 YW: 89 MM: 33 TM: 60 MCE: 8.0

Another top end, broody type female with a ton of rib and depth of body. 60F is not hard to pick out because of her mass. Bred early to HF Stature 87D, the go-to calving easy bull that will still add performance. With a TM EPD at 60, she will make a great addition to any herd.

**AI bred to HF Stature 87D on April 17, 2019. Pasture exposed to HBH Fortune 10F from April 30 to June 14, 2019. Ultrasounded safe to AI date.**

Consigned By HBH Angus Farms Inc., Oak River, MB



Tibbie 60F

40

HBH **Eline** 107F

FEMALE HBH 107F 2033084 JAN. 25, 2018

S A V INTERNATIONAL 2020  
**PEAK DOT INTERNATIONAL 28D**  
 ERICA OF PEAK DOT 478U

S A V HARVESTOR 0338  
 S A V EMBLYNETTE 5483  
 S A V 004 PREDOMINANT 4438  
 ERICA OF PEAK DOT 326R

TJF 20X AMBUSH 14Z  
**HBH ELINE 24B**  
 KEMBAR ELINE 15N

TJF AMBUSH 20X  
 TJF MS FREEDOM 35U  
 CONNEALY VENTURE 4423  
 KEMBAR ELINE 13L

BW: 78 lbs. ADJ WW: 563 lbs.

BW: 4.1 WW: 46 YW: 81 MM: 22 TM: 45 MCE: 4.0

A moderate made, very smooth bodied heifer with a straight top. Exposed to HBH Fortune 10F, an O C C Legacy 839L son that we used on a group of heifers.

**Pasture exposed to HBH Fortune 10F from April 30 to June 14, 2019. Ultrasounded July 4, 2019 35 days pregnant.**

Consigned By HBH Angus Farms Inc., Oak River, MB



Eline 107F

41

HBH **Karama** 112F

FEMALE HBH 112F 2033093 JAN. 26, 2018

S A V INTERNATIONAL 2020  
**PEAK DOT INTERNATIONAL 28D**  
 ERICA OF PEAK DOT 478U

S A V HARVESTOR 0338  
 S A V EMBLYNETTE 5483  
 S A V 004 PREDOMINANT 4438  
 ERICA OF PEAK DOT 326R

S A V NET WORTH 4200  
**BROOKMORE KARAMA 190X**  
 BROOKMORE KARAMA 76R

S A V 8180 TRAVELER 004  
 S A V MAY 2410  
 MVF STOCKMAN 45H  
 BROOKMORE KARAMA 130E

BW: 88 lbs. ADJ WW: 634 lbs.

BW: 4.0 WW: 56 YW: 98 MM: 20 TM: 48 MCE: 3.0

The largest framed heifer in our offering by far. If you want to add performance to your herd she would be a great choice. Very straight topped and deep bodied. Bred to our herd bull, Young Dale Hi Def 52E, who is moderate in frame and is proving to calve very easy.

**AI bred to Koupal Kozi 418 on April 17, 2019. Pasture exposed to Young Dale Hi Def 52E from April 30 to June 14, 2019. Ultrasounded safe to very early exposure.**

Consigned By HBH Angus Farms Inc., Oak River, MB



Karama 112F

# Black Angus - Bred Heifers

42

YOUNG DALE **Blackbird** 2F

FEMALE YDF 2F 2058010 JAN. 3, 2018



Blackbird 2F

S A V REGISTRY 2831  
**S A V SENSATION 5615**  
 S A V BLACKCAP MAY 4136

HARVEST'S HEADLINER 2W  
**HARVEST BLACKBIRD ROSE 15B**  
 HF BLACKBIRD 145P

RITO 707 OF IDEAL 3407 7075  
 S A V MADAME PRIDE 0075  
 S A V 8180 TRAVELER 004  
 S A V MAY 2397

HF HEMI 151T  
 HF ECHO 101N  
 HF POWER SOURCE 94M  
 HF BLACKBIRD 120L

**BW: 90 lbs. ADJ WW: 570 lbs. ADJ YW: 1041 lbs.**  
**BW: 5.2 WW: 50 YW: 93 MM: 21 TM: 46 MCE: -1.0**



Six Mile Fort Knox 27F  
 Service Sire

This female is a front end bred heifer by S A V Sensation 5615 and out of Tom DeWaal's Harvest Blackbird Rose 15B, combining two very predictable pedigrees in our Angus world. She is bred to Six Mile Fort Knox 27F. This bull is destined to make his mark as a breeding sire here at Young Dale.

**Pasture exposed to Six Mile Fort Knox 27F from May 2 to July 31, 2019. Observed bred on May 2, 2019.**

Consigned By Young Dale Angus, Carievale, SK

FEMALE YDF 146F 2058098 MAR. 9, 2018

43

YOUNG DALE **Kristina** 146F



Kristina 146F

K-COW WINDMILL 1Z  
**DFCC 1Z CAPITAL ONE 30C**  
 CFS QUEENETTE 3T

YOUNG DALE KNOCK OUT 134U  
**YOUNG DALE KRISTINA 27X**  
 YOUNG DALE KRISTINA 116T

K-COW WINDMILL 67W  
 DXB 1299J RUBY 1P  
 LLB FULLBACK 27M  
 SANDY BAR QUENETTE 404J

LAGRAND MAF ANTIDOTE 5775  
 YOUNG DALE ERICA 26N  
 YOUNG DALE BANKROLL 79R  
 YOUNG DALE KRISTINA 24M

**BW: 89 lbs. ADJ WW: 582 lbs. ADJ YW: 991 lbs.**  
**BW: 4.4 WW: 50 YW: 86 MM: 20 TM: 45 MCE: 6.0**



Young Dale Fine Tune 9F  
 Service Sire

Here is a bred heifer that is sure to catch your eye. Beautiful pattern and design following her dam, Kristina 27X, who is an Elite Dam here at Young Dale. The Capitol One 30C sire has left us a great group of two year old, first calf heifers who have weaned their first calves in the top end of production here. Kristina 146F is sure to make you a great investment going forward. She is bred to Young Dale Fine Tune 9F, sired by Believe and Absolute 113A in background, both high selling bulls here at

Young Dale. Check out his 60 lb. birth weight with a world of performance and phenotype. This bull will be a sire of significance at Young Dale.  
**AI bred to Young Dale Fine Tune 9F on May 24, 2019.**

Consigned By Young Dale Angus, Carievale, SK

FEMALE YDF 56F 2062399 FEB. 6, 2018

44

YOUNG DALE **Grace** 56F



Grace 56F

YOUNG DALE ZALMAN 18Z  
**YOUNG DALE RADIUS 16B**  
 YOUNG DALE GRACE 74U

YOUNG DALE PANARAMA 66T  
**YOUNG DALE GRACE 126Z**  
 YOUNG DALE GRACE 19T

YOUNG DALE XCALIBER 32X  
 YOUNG DALE GRACE 7X  
 YOUNG DALE TEDDY BEAR 92R  
 YOUNG DALE GRACE 030H

S A V NET WORTH 4200  
 YOUNG DALE POLLYANNA 22P  
 BUFFALOS CONCLUSIVE BN46  
 YOUNG DALE GRACE 1R

**BW: 83 lbs. ADJ WW: 595 lbs. ADJ YW: 1059 lbs.**  
**BW: 3.4 WW: 58 YW: 84 MM: 24 TM: 53 MCE: 6.0**



Young Dale Grace 126Z  
 Dam

This bred heifer has a royal pedigree here at Young Dale. Her sire, Young Dale Radius 16B, is owned with Symens Land & Cattle Co., doubling up the Grace cow family, being a direct daughter of Grace 126Z. This gal wrote her own book, mother of Believe, Dialed Up and Defiance and later purchased by Angus Valley Farms. She should be a top choice for anyone in this sale.

**Pasture exposed to Six Mile Fort Knox 27F from May 14 to July 31, 2019. Observed bred on May 11, 2019.**

Consigned By Young Dale Angus, Carievale, SK

45

YOUNG DALE **Blackcap** 91F

FEMALE YDF 91F 2058061 FEB. 20, 2018

YOUNG DALE XCALIBER 32X  
**YOUNG DALE DRAISAITL 108D**  
 YOUNG DALE POLLYANNA 30U

YOUNG DALE KNOCK OUT 134U  
 BROOKMORE TIBBIE 222T  
 YOUNG DALE TOUCH DOWN 36M  
 YOUNG DALE POLLYANNA 19S

MOHNEN SOUTH DAKOTA 402  
**YOUNG DALE BLACKCAP 1C**  
 HARRON BABE 8W

MOHNEN DENSITY 730  
 MOHNEN JILT 539  
 ROYAL RP DRCC 7040T  
 CAIRNLEE'S VRD BABES 15S

BW: 80 lbs. ADJ WW: 556 lbs. ADJ YW: 986 lbs.

BW: 2.4 WW: 50 YW: 82 MM: 19 TM: 44 MCE: 5.0

Here is a bred heifer with style and presence. Her sire, Young Dale Draisaatl 108D is an Xcaliber son that is a top herd bull for Megan Bond. His dam is Robbie's favourite Angus cow, Young Dale Pollyanna 30U. The dam of 91E is an own daughter of Mohnen South Dakota 402. She is destined to be a front pasture cow carrying service to a new exciting junior herd sire at Young Dale.



Young Dale Draisaatl 108D Sire

AI bred to Young Dale Fever 51F on May 8, 2019. Pasture exposed to Six Mile Fort Knox 27F from June 3 to July 31, 2019.



Blackcap 91F

Consigned By Young Dale Angus, Carievale, SK

46

YOUNG DALE **Miss Quality** 74F

FEMALE YDF 74F 2058052 FEB. 11, 2018

PF HOOVER DAM 041  
**YOUNG DALE HI DEFINITION 185B**  
 BLACK HAMCO COUNTESS 417T

HOOVER DAM  
 P F QUEEN MOTHER 446  
 PRAIRIELANE IDEAL 1418-0051  
 BLACK HAMCO SIMPSON 330N

SANDY BAR FORT ROCK 32Z  
**SANDY BAR MISS QUALITY 426B**  
 VALLEY BLOSSOM IDEAL 18S 902W

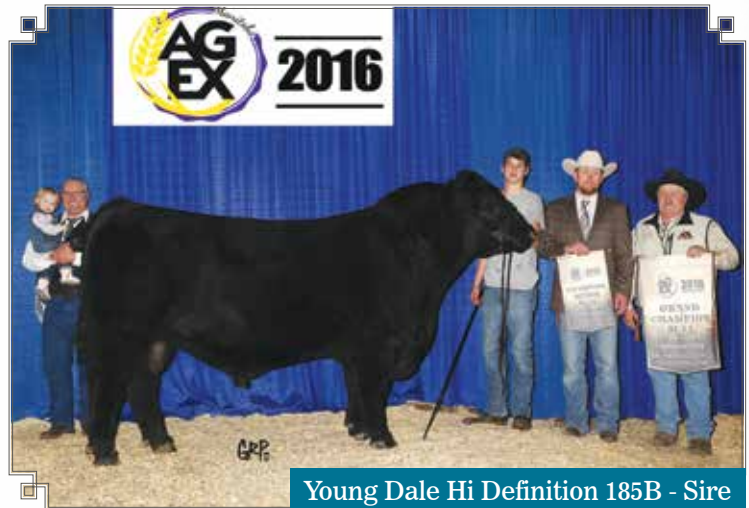
GLENDAR FORT ROCK 18X  
 CFS LADY 8U  
 SANDY BAR IDEAL 18S  
 VALLEY BLOSSOM MS QUALITY 763N

BW: 82 lbs. ADJ WW: 598 lbs. ADJ YW: 1035 lbs.

BW: 1.9 WW: 48 YW: 87 MM: 22 TM: 46 MCE: 8.0

This bred heifer has brood cow wrote all over her. She is sired by Hi Definiton 185B and out of our Sandy Bar 426B female. This lines up her pedigree to the ideal performance cattle on both sides guaranteeing the outcome of a great cow.

Pasture exposed to Six Mile Fort Knox 27F from May 14 to July 31, 2019. Observed bred on May 11, 2019.



Young Dale Hi Definition 185B - Sire

Consigned By Young Dale Angus, Carievale, SK

47

YOUNG DALE **Grace** 17F

FEMALE YDF 17F 2058019 JAN. 24, 2018

PF HOOVER DAM 041  
**YOUNG DALE HI DEFINITION 185B**  
 BLACK HAMCO COUNTESS 417T

HOOVER DAM  
 P F QUEEN MOTHER 446  
 PRAIRIELANE IDEAL 1418-0051  
 BLACK HAMCO SIMPSON 330N

YOUNG DALE BELIEVE 46B  
**YOUNG DALE GRACE 28D**  
 YOUNG DALE GRACE 54B

YOUNG DALE XCALIBER 32X  
 YOUNG DALE GRACE 126Z  
 YOUNG DALE ZODIAC 3Z  
 YOUNG DALE GRACE 151Z

BW: 70 lbs. ADJ WW: 586 lbs. ADJ YW: 1123 lbs.

BW: 2.2 WW: 62 YW: 112 MM: 20 TM: 51 MCE: 9.0

Hold onto your hats folks when this female comes into the ring, she is a topper and destined to do great things. Her sire, Hi Definition, speaks for himself. Her dam comes from a long line of successful females here at Young Dale. Young Dale Grace 28D sold to Matt Artz of Pierson, her sire is none other than Young Dale Believe, sold to Richmond Ranch Ltd. and whose dam is none other than Young Dale Grace 126Z, that's right another Grace! Study this female folks, she is one that will build a bank account for you.



Six Mile Fort Knox 27F Service Sire

Pasture exposed to Six Mile Fort Knox 27F from May 14 to July 31, 2019. Observed bred on May 14, 2019.



Grace 17F

Consigned By Young Dale Angus, Carievale, SK

## Black Angus - Bred Heifers

48

MCRAE'S **Kyma** 141F

FEMALE MCLL 141F 2030597 MAR. 3, 2018



Kyma 141F

MAR MAC TIGER 159Y  
**MAR MAC TIGER 170A**  
 GERLEI HEROINE 75Y

VALLEY BLOSSOM IDEAL 19S 914W  
**SANDY BAR KYMA 191C**  
 FARVIEW KYMA 26W

HF TIGER 5T  
 MCRAES BRIDGET 125T  
 STUART DESTINATION 32S  
 GERLEI HEROINE 27U

SANDY BAR IDEAL 19S  
 VALLEY BLOSSOM PRIDE 700P  
 SSA 4336 DENSITY 9T  
 FARVIEW KYMA 57K

BW: 84 lbs.

BW: 2.9 WW: 42 YW: 71 MM: 21 TM: 42 MCE: 3.0

141F is a very fancy heifer. She is feminine, deep bodied and smooth made. Her mother, 191C, has an outstanding bull calf at side this year! Her sire, Tiger 170A, has been famous for leaving beautiful daughters that make awesome cows!

AI bred to S Chisum 255 on April 7 and May 20, 2019. Pasture exposed to Merit Stoney Creek 7035E from June 2 to July 10, 2019. Favorable to natural service.

Consigned By McRae Land & Livestock, Brandon, MB

49

MCRAE'S **Jemina** 144F

FEMALE MCLL 144F 2030598 MAR. 5, 2018



Jemina 144F

MAR MAC TIGER 159Y  
**MAR MAC TIGER 170A**  
 GERLEI HEROINE 75Y

WILBAR EMBARGO 29Z  
**SANDY BAR JEMINA 195C**  
 SANDY BAR JEMINA 108Y

HF TIGER 5T  
 MCRAES BRIDGET 125T  
 STUART DESTINATION 32S  
 GERLEI HEROINE 27U

DMM TRADE SECRET 36X  
 WILBAR ERELITE 962N  
 SANDY BAR IDEAL 18S  
 SANDY BAR JEMINA 15S

BW: 80 lbs. ADJ WW: 559 lbs.

BW: 2.9 WW: 35 YW: 69 MM: 19 TM: 37 MCE: 6.0

144F is a powerful heifer with lots of thickness and fleshing ability. Her dam, 195C, is very similar made, moderate framed with lots of muscle and thickness. Her sire, Tiger 170A, has been famous for leaving beautiful daughters that make awesome cows!

AI bred to S Chisum 255 on April 17, 2019. Pasture exposed to Merit Stoney Creek 7035E from June 2 to July 10, 2019. Favorable to AI date.

Consigned By McRae Land & Livestock, Brandon, MB

# Junior Incentive:

Eligibility is only for Juniors and 4-H Members.

Purchaser must be in attendance and purchase must be transferred into the Junior's name.

10% discount available on all 2019 heifers.

**50A** HMM **Lady Sandra** 53E

FEMALE HMM 53E 1976397 JUNE 1, 2017

YOUNG DALE JULIAN 108X  
**YOUNG DALE JULLIAN 153Z**  
 S A V MADAME PRIDE 0261

YOUNG DALE SHEAR FORCE 82U  
 WINDOVER ERICA 27J  
 S A V HERITAGE 6295  
 S A V MADAME PRIDE 5560

YOUNG DALE XCALIBER 32X  
**YOUNG DALE LADY SANDRA 177A**

YOUNG DALE KNOCK OUT 134U  
 BROOKMORE TIBBIE 222T  
 YOUNG DALE PYTHON 9W

YOUNG DALE LADY SANDRA 140Y YOUNG DALE LADY SANDRA 131W  
**BW: 88 lbs. ADJ WW: 689 lbs.**

**BW: 1.8 WW: 54 YW: 95 MM: 23 TM: 50 MCE: 7.0**

This June born heifer was intentionally left open to let her grow up to her full potential. I am offering choice on these two because their dam, Young Dale Lady Sandra 177A, blessed me with another heifer calf this year. I would also like to note that since I purchased her in 2017, she began calving in June, in 2018 she moved up to April 11 and this year she calved on February 17, talk about fertility!

Pasture exposed to Legaarden Froh Show 10F from April 30 to July 15, 2019. Preg checked on October 10 to be five months pregnant.

Consigned By Madsen Angus  
 Arden, MB

**Selling  
 Choice**



Lady Sandra 53E

**50B** HMM **Lady Sandra** 41F

FEMALE HMM 41F 2051047 APR. 11, 2018

R B TOUR OF DUTY 177  
**MADSEN DEFENDER 12D**  
 YOUNG DALE POLLYANNA 78S

WERNER WAR PARTY 2417  
 B A LADY 6807 305  
 S A V 004 PREDOMINANT 4438  
 YOUNG DALE POLLYANNA 24P

YOUNG DALE XCALIBER 32X  
**YOUNG DALE LADY SANDRA 177A**

YOUNG DALE KNOCK OUT 134U  
 BROOKMORE TIBBIE 222T  
 YOUNG DALE PYTHON 9W

YOUNG DALE LADY SANDRA 140Y YOUNG DALE LADY SANDRA 131W  
**BW: 84 lbs.**

**BW: 1.5 WW: 55 YW: 96 MM: 23 TM: 51 MCE:**

If you're looking for a complete female look no further; Lady Sandra is a moderate female with great confirmation and a calm disposition to boot. AI bred to 4M Element 405 on May 2, 2019. Pasture exposed to Legaarden Froh Show 10F from May 6 to July 15, 2019. Preg checked safe.

Consigned By Madsen Angus  
 Arden, MB



Young Dale Lady Sandra 177A  
 Dam of Lots 50A & 50B



Lady Sandra 41F

**51** EASTONDALE **Forever Lady** 128'18

FEMALE VKE 128F 2109825 MAR. 23, 2018

LLB REFLECTION 607A  
**HF REFLECTION 241C**  
 HF TIBBIE 77Z

MCATL REFLECTION 120-577  
 SOO LINE DANA 9028  
 CONNEALY CONSENSUS 7229  
 HF TIBBIE 100M

COLE CREEK BLACK CEDAR 46P  
**EASTONDALE FOREVER LADY 58'14**  
 EASTONDALE FOREVER LADY 29'12

C H QUANTUM 6247  
 COLE CREEK CLOVA JUANADA 67  
 DRYLAND MAX 533  
 EASTONDALE FOREVER LADY 13'09

**BW: 78 lbs.**

**BW: 2.4 WW: 52 YW: 94 MM: 23 TM: 49 MCE: 4.0**

A real nice bred heifer stemming from the great Forever Lady 9136 cow we purchased in 2005 from the Bouchard's dispersal sale. This cow family is the cornerstone of our breeding program now. She is a nice female with a little different pedigree to the more traditional pedigrees now. She is moderate, easy fleshing and balances in her body type.

AI bred to Ellingson Homegrown 6035 on May 2, 2019. Pasture exposed to FRL Muldanado 37D from May 25 to July 1, 2019. Preg checked favorable to AI service.

Consigned By Eastondale Angus, Wawota, SK



Forever Lady 128'18

# Black Angus - Bred Heifers

52

NYK **Miss Eva** 2F

FEMALE NYK 2F 2028246 JAN. 11, 2018



Miss Eva 2F

MOGCK BULLSEYE  
**BRUNS BLASTER**  
 BALDRIDGE BLACKBIRD 11 BAF

BELVIN TRES MARIAS PATRON 205  
**N7'S EVA MARIAS 12A**  
 MVF MISS EVA 195S

MOGCK SURE SHOT  
 MOGCK MARY 1255  
 CONNEALY RIGHT ANSWER 746  
 BALDRIDGE BLACKBIRD 549 BAF

ALSTON 5384 CATRIEL F  
 TRES MARIAS6764 ROSANEGRA 5214  
 WESTERN WIDESPREAD 1L  
 MVF MISS EVA 12L

BW: 75 lbs. ADJ WW: 616 lbs.

BW: 1.7 WW: 65 YW: 117 MM: 28 TM: 61 MCE: 12.0

If performance is important to you, I would suggest you circle this heifer. This big bodied daughter of Bruns Blaster has excellent EPDs and demonstrates real life performance. Her mother is a powerhouse and her granddam is designated as a Premier Dam by the CAA. She's bred to our calving ease herd sire, N7 Pulse 59F. His dam is our lead donor and I expect this mating to really click.

**Pasture exposed to N7 Pulse 59F from May 25 to July 31, 2019. Observed bred on May 21, 2019. Vet check confirmed 3-4 months pregnant as of September 14.**

Consigned By NYK Cattle Company, Douglas, MB

53

NYK **Blackwood Lady** 27F

FEMALE NYK 27F 2028258 FEB. 22, 2018



Blackwood Lady 27F

N7'S ELVIS 9Y  
**NYK GRACELAND 39B**  
 SOO LINE GEORGINA 1101

S A V RESOURCE 1441  
**N7'S BLACK WOODLADY 46D**  
 N7'S BLK WOODLADY 7X

SITZ UPWARD 307R  
 MVMM BLOSSOM 250U  
 HF KODIAK 5R  
 SOO LINE GEORGINA 9371

RITO 707 OF IDEAL 3407 7075  
 S A V BLACKCAP MAY 4136  
 TC STOUT 407  
 N7'S BLKWOOD LADY 82U

BW: 84 lbs. ADJ WW: 617 lbs.

BW: 4.9 WW: 55 YW: 100 MM: 20 TM: 48 MCE: 2.0

Right from the top of our replacement pen, here's big powerful heifer that will go home and work for you. She's puppy dog quiet, big boned, perfect footed and has a tremendous looking udder coming. Her dam is a perfect uddered, fertile, easy fleshing, S A V Resource daughter that we selected as our pick of N7's heifers in 2016. 27F is carrying service to the exciting North Camp Silver Star. His first calves look very promising and we're excited to have a larger group of them in 2020.

**AI bred to North Camp Silver Star 5103 on May 6, 2019. Pasture exposed to N7 Pulse 59F from May 25 to July 31, 2019. Vet check confirmed 4-5 months pregnant as of September 14.**

Consigned By NYK Cattle Company, Douglas, MB

54

BOOTIS **Lady** 9F

FEMALE TGN 9F 2061088 MAR. 24, 2018



Lady 9F

MOHNEN SOUTH DAKOTA 402  
**JUSTAMERE BIG DAKOTA 861C**  
 JUSTAMERE 902T GEORGINA 205T

S A V BISMARCK 5682  
**BOOTIS MISS BISMARCK TGN 25X**  
 GREENBUSH ANNE 23U

MOHNEN DENSITY 730  
 MOHNEN JILT 539  
 JUSTAMERE 7704 COWBOY 902M  
 ROY MAC GEORGINA 15H

G A R GRID MAKER  
 S A V ABIGALE 0451  
 S A V 004 DENSITY 4336  
 GREENBUSH ANNE 9K

BW: 2.8 WW: 49 YW: 81 MM: 21 TM: 46



Premier Hasson Felix 811F  
 Service Sire

Bootis Lady 9F is from one of our favourite Bismarck daughters, which will fit into any program. Her mother is an easy calver and always brought home a great calf. Bootis Lady 9F is due early March and is bred to Premier Hasson Felix 811F, son of Dameron First Impression, that we purchased from Ontario.

**Pasture exposed to Premier Hasson Felix 811F from May 24 to June 28, 2019. Preg checked safe to an early March calf.**

Consigned By Bootis Black Angus, Eddystone, MB

55

FRASER **Madonna** 926G

FEMALE JFRA 926G 2107255 FEB. 7, 2019

VISION UNANIMOUS 1418  
**FRASER POKER FACE 613D**  
 RED HOWE DYNA QUEEN 241A  
 RED BRYLOR NEW TREND 22D  
**RED FRASER MADONNA 125Y**  
 RED FRASER MADONNA 903W

VISIONTOPLINE ROYAL STOCKMAN  
 VISION EDELLA 665  
 RED EKW LUCKY 13U  
 RED HOWE DYNA QUEEN 114X  
 SSS BLACK TREND 13B  
 RED MEADOW CK MISS SEAMAN 31A  
 RED SSS RECON 775T  
 RED MEADOW CK MADONNA 52T

BW: 88 lbs.

(PE) BW: 2.8 WW: 40 YW: 69 MM: 20 TM: 41 MCE: 5.5

It's a good thing we have plenty of semen in the tank on Poker Face, when you see what he produced in only a couple of years. This is a product of the last natural calf crop we will get from him. He was only here for two breeding seasons but sure left an impression. 926G is also from our Madonna family that started several years ago with a purchase from Red Roundup. It's not very often that we offer a black/red carrier female for sale, but when we do, it's a great one! 125Y is a great New Trend daughter that has a near flawless udder and great foot. We gave Chris the pick of the pasture when he came and he sure knew how to pick the best.

Consigned By Fraser Farms, Melita, MB



Madonna 926G

56

RED FRASER **Madonna** 923G

FEMALE JFRA 923G 2106808 FEB. 3, 2019

PEAK DOT ELIMINATOR 100Z  
**RED SIX MILE ELIMINATOR 241E**  
 RED GLESBAR BARBIE 68Y

RKY MTN THE ANSWER 10X  
**FRASER MADONNA 609D**  
 RED FRASER MADONNA 31X

S A V ELIMINATOR 9105  
 ERICA OF PEAK DOT 730T  
 RED GLESBAR EXCEL 11R  
 GLESBAR BARBIE 008U

S A V FINAL ANSWER 0035  
 RED RKY MTN SHAWNEE 24M  
 RED FRASER SEQUOIA 748T  
 RED MEADOW CK MADONNA 52T

BW: 76 lbs.

(PE) BW: 1.1 WW: 28 YW: 45 MM: 22 TM: 36 MCE: 5.0

Here is the first daughter offered by our Eliminator bull. He was a feature in Six Mile's bull sale last year and we are very happy with what he produced in his first calf crop. His dam was the lead off cow in the great Glesbar dispersal a few years ago. This girl's dam is also very interesting in that she is a full sister to the Answer bull that we sold to Howes a few years ago. She raised our best bull calf last year even though he was black! She has a tremendous future for us when she produces cattle like this! You will have to drive many miles to find red females with this much of the popular S A V genetics on their paper.

Consigned By Fraser Farms, Melita, MB



Madonna 923G

57

RED JAS **Lena** 14G

FEMALE JASS 14G 2095201 JAN. 23, 2019

RED PIE SPECIALIST 430  
**RED COCKBURN ASSASSIN 624D**  
 RED COCKBURN CORA 254Z

RED SUNSET RIDGE COPPER 3C  
**RED JAS LENA 168E**  
 RED JAS LENA 161C

RED LSF SAGA 1040Y  
 RED PIE PLAYMATE 232  
 RED LAZY MC HUSTLE 18T  
 RED WILBAR CORA 443P

RED CROWFOOT MOONSHINE 8081U  
 RED SUNSET RIDGE ZINA 15Z  
 RED BRYLOR JKC FORT KNOX 100Y  
 RED JAS LENA 59M

BW: 70 lbs.

BW: 0.9 WW: 43 YW: 74 MM: 25 TM: 47 MCE: 7.0

The front pasture kind that goes back to an original purchase to start herd. 624D has a very consistent sire group with two here and two at Red Roundup.

Consigned By JAS Red Angus, Neepawa, MB



Lena 14G

# Red Angus - Heifer Calves

58

RED JAS **Ghostbuster** 125G

FEMALE JASS 125G 2095250 FEB. 26, 2019



Ghostbuster 125G

RED PIE SPECIALIST 430  
**RED COCKBURN ASSASSIN 624D**  
 RED COCKBURN CORA 254Z

RED LSF SAGA 1040Y  
 RED PIE PLAYMATE 232  
 RED LAZY MC HUSTLE 18T  
 RED WILBAR CORA 443P

RED CINDER WAY TOO SMART 4X  
**RED JAS BLOCKBUSTER 137B**  
 RED JAS BRANDINA 43R

RED CINDER MARTIN' UP 132P  
 RED LONE STONE 225M SATINA 4S  
 RED TKP BODACIOUS 693  
 RED PRESCOTT BRANDINA 90L

BW: 90 lbs.

BW: 3.2 WW: 44 YW: 75 MM: 31 TM: 53 MCE: 4.5

Dark red, power female. Dam is a big angular, beauty. Great numbers and great calf.

Consigned By JAS Red Angus, Neepawa, MB

59

RED RRW **Cindy** 911G

FEMALE RRW 911G 2087507 MAR. 1, 2019



Cindy 911G

RED SOO LINE POWER EYE 161X  
**RED DOUBLE B BULLSEYE 1B**  
 RED BLAIRS PRICILLA 44Z

RED TR LYNN 301R  
 RED RINGSTEAD KARGO 215U  
 RED BRYLOR PRISCILLA 67W

RED FRASER POUNDMAKER 779T  
**RED FOR'S CINDY 50W**  
 RED CINDER CLASSY TRENDS 23S

RED GEIS POUNDMAKER 61'03  
 RED MEM SKYLAR 16M  
 RED BRYLOR NEW TREND 22D  
 RED HIDDEN CLASSY 23J

BW: 90 lbs.

(PE) BW: 2.7 WW: 37 YW: 65 MM: 21 TM: 39 MCE: 7.5



Red For's Cindy 50W  
 Dam

This March Bullseye baby is so attractively made, with a big top, big middle and a super attractive front end. 911G moves so gracefully on a great set of feet and legs that will last. Her mother was purchased out of this sale a few years ago and has become a foundation female here at Ramrod West. 911G is a great opportunity to purchase a future foundation female for your herd.

Consigned By Ramrod West, Redvers, SK

60

RED ROOKE **Betty** 255G

FEMALE RLCC 255G 2088013 JAN. 31, 2019



Betty 255G

RED FLYING K NEPTUNE 28Z  
**RED MAR MAC CARPENTER 24C**  
 RED MCRAES FRAN 51T

RED BECKTON NEBULA W312L3  
 RED FLYING K BERRY 9X  
 RED FINE LINE MULBERRY 26P  
 RED MCRAE'S FRADO 53J

RED DOUBLE C XANDAN 254X  
**RED HIGH CALIBER BETTY 56B**  
 RED HIGH CALIBER BETTY 62U

RED TOPLINE RANCHMMAN 818  
 RED DOUBLE C ABBIE 153R  
 RED CRESCENT CREEK BONUS 145M  
 RED HIGH CALIBER BETTY 281M

BW: 79 lbs.

BW: 0.6 WW: 24 YW: 43 MM: 21 TM: 33 MCE: 3.0

Red Rooke Betty 255G has been a standout heifer since day one. This composed girl is out of a beautifully balanced cow and the strong shouldered Carpenter 24C sire. An exhibition of her future is visible in the bred heifer we have on offer in the sale as a paternal sibling to this girl. They are similarly well balanced, stocky females with capacity and great potential.

Consigned By D & P Rooke Farms, Alexander, MB



61

RED RCR **Shadow** 114G

FEMALE RCR 114G 2119733 MAR. 4, 2019

RED DEER RANGE DUKE 38B  
**RED DEER RANGE NICK 42D**  
 RED DEER RANGE PRIDE 954W

RED ANCHOR 1 DUKE 177U  
 RED DEER RANGE LUCKY 899W  
 RED SIX MILE SAKIC 832S  
 RED DEER RANGE PRIDE 453T  
 RED THAT'LL DO SIESTA 41S  
 RED PETRIE 54H  
 RED SHODEREE DYNAMITE 112N  
 RED U6 SHADOW 6M 21N

RED 4A SIESTA 99U  
**RED RCR SHADOW 167B**  
 RED 999 CAL 41'40X

BW: 93 lbs.

(PE) BW: 1.3 WW: 30 YW: 55 MM: 22 TM: 37 MCE: 8.0

When making our Keystone selections we like to choose heifers that are representative of our program as well as on the leading edge of our genetics, Red RCR Shadow 114G fit that perfectly! 114G's grandmother is our main red donor cow and she's sired by our newest red addition, Red Deer Range Nick. We're just starting to see the results from Nick and we're LOVING them! He is definitely standing up against some of the old favorites around here. This sweet heifer has the right mix of broodiness and femininity!

Consigned By Right Cross Ranch, Kisbey, SK



Shadow 114G

62

RED RAVENBROOK **Queeny** 2G

FEMALE ERF 2G 2120805 JAN. 27, 2019

RED BIEBER ROLLIN DEEP Y118  
**RED BIEBER DEEP END B597**  
 RED BIEBER LAURA 158W

RED BIEBER ROOSEVELT W384  
 RED BIEBER TILLY 399W  
 RED LJC MISSION STATEMENT P27  
 RED BASIN LAURA 530I

RED RILEY'S TAMARAC 31X  
**RED CIRCLE C QUEEN 2Z**  
 RED CRESTLINE QUEEN 107X

RED BRYLOR TOAST 30T  
 RED RILEY'S VELVET 98N  
 RED RILEY'S PINEAPPLE 34U  
 RED TOPLINE QUEEN 739

BW: 92 lbs. 205 DAY WT: 710 lbs.

(PE) BW: 1.4 WW: 49 YW: 84 MM: 23 TM: 48 MCE: 7.0

This big framed heifer is one that was picked for this sale on first sight. She is a special girl to our farm and have a hard time letting this big-time herd builder go. She is a perfect pick for anyone looking to get some great genetics and size in their herd.

Consigned By Ravenbrook Red Angus, Grunthal, MB



Queeny 2G

**Can't make it to the sale?**  
**Internet Bidding Available.**

To view this sale visit [www.dlms.ca](http://www.dlms.ca), Fill out the registration form located under registration and sign-up for your free user account and select a username and password.

**BIDDERS** - To be approved as a bidder, Log in to [dlms.ca](http://dlms.ca) and click BUYER APPROVAL tab, select the sale you are interested in bidding at and click sign up.

For more information  
 Call DLMS Reps:  
 Mark Shologan - 780-699-5082 or  
 DLMS Purebred Team 780.991-3025

**DLMS**  
[www.dlms.ca](http://www.dlms.ca)

# Red Angus - Bred Heifers

63

RED MAR MAC DM **Rebecca** 78F

FEMALE KOF 78F 2034192 FEB. 10, 2018



Rebecca 78F

RED SOO LINE CASH 9161  
**RED MOOSE CREEK RIPZONE 89D**  
 RED MOOSE CREEK LAUREL 79A  
 RED MCRAE'S MISSION 71W  
**RED MAR MAC REBECCA 90A**  
 RED BUCK VALLEY REBECCA 34S  
 RED CORNER CREEK CASH 2R  
 RED TR LYNN 301R  
 RED SVR GANGSTER 44X  
 RED MOOSE CREEK LAUREL 21Y  
 RED LJC MISSION STATEMENT P27  
 RED MCRAE'S RUBY 10T  
 RED CUMNOCK ROYCE 974M  
 RED VVV REBECCA 24F 19C 43H

BW: 90 lbs. ADJ WW: 595 lbs.

BW: 1.2 WW: 40 YW: 62 MM: 24 TM:44 MCE: 4.0

The first bred Ripzone female to sell and she is a broody female whose dam never misses. 90A's Ripzone son, a full brother to Rebecca, will be at the top end of the bull pen in 2020. Ripzone has done an amazing job on both bulls and females. His sons were favorites at the 2019 bull sale, his first calf crop. Rebecca sells bred to Red Peak Dot Eliminator 596C. Eliminator incorporates such greats as Pioneer 7301, Iron Mountain 8066, Predominant 4438 and Eliminator 9105 into red hided progeny. Mar Mac is very pleased with the Eliminator progeny and will be some of the features in the March 11, 2020 bull sale. Exciting opportunity here.

AI bred to Red Peak Dot Eliminator 596C on April 17 and May 6, 2019. No exposure. Safe to AI date.

Consigned By Mar Mac Farms, Brandon, MB

64

RED WILBAR **Helga** 26F

FEMALE WJD 26F 2054849 FEB. 1, 2018



Helga 26F

DKF ELIMINATOR 15A  
**RED DKF RAZOR 55C**  
 DKF MISS NET WORTH 21A  
 RED TER-RON RELOAD 703T  
**RED WILBAR HELGA 744C**  
 RED WILBAR HELGA 612S  
 S A V ELIMINATOR 9105  
 RED DKF MISS POWER 17P  
 S A V NET WORTH 4200  
 DKF MISS POWER UP 95X  
 RED TER-RON FULLY LOADED 540R  
 RED TER-RON SAMARIA 103N  
 RED TER-RON TORNADO 157M  
 RED WILBAR HELGA 320N

BW: 88 lbs. ADJ WW: 660 lbs.

BW: 3.2 WW: 46 YW: 72 MM: 23 TM:46 MCE: 4.0



Red Wilbar Helga 211E  
Full Sister

Red Wilbar Helga 26F is a full sister to Helga 211E, who was recently the high selling cow (half interest) to Ter-Ron Farms at Red Round-Up. When we committed her to the Keystone, we hadn't anticipated Kylie offering her cow at Round-Up, so to say we are now reluctant to let 26F go may be an understatement! The Razor daughters are certainly making a mark in terms of udder structure, added bone and rib shape. The Helga cow family continues to prove themselves as worthy donor females. I'm not sure there is anything that can be said to add to the photo of 26F's full sister; based on their similarities at this stage, there is no reason not to expect a repeat performance. While the vet called her favourable to her

AI service to one of the hottest bulls in the breed right now, the exposure service would give you a full pedigree sibling to the calf at side of 211E, the pair with which Kylie has had much success. AI bred to Red NCJ Comin In Hot 24E on April 24, 2019. Pasture exposed to Red Twin Heritage Motivate 57E from May 13 to June 3, 2019.

Consigned By Wilbar Cattle Co., Dundurn, SK

65

RED ACC **Maria** 88F

FEMALE BIA 88F 2046923 FEB. 3, 2018



Maria 88F

ACC PACESETTER 73B  
**RED ACC PACESETTER 158D**  
 ACC CLAIRE 42A  
 RED FBAC SOME R BETTER 1E  
**RED ACC MARIA 26D**  
 ANDERSON'S MARIA 105X  
 CRESCENT CREEK PACESETTER 128Z  
 ACC DAISY 8Z  
 TC ABERDEEN 759  
 RED CRESCENT CREEK CLAIRE 59Y  
 RED LMAN NONE BETTER 9604  
 RED BAAC TIBBIE 4C  
 ANDERSON'S WHO'S NEXT 39S  
 RED ANDERSON'S MARIA 65N

BW: 80 lbs. ADJ WW: 663 lbs. ADJ YW: 1034 lbs.

BW: 2.4 WW: 46 YW: 80 MM: 15 TM: 38 MCE: 3.0



Red Cockburn Assassin 624D  
Service Sire

You can never have too many Pacesetter daughters. This fancy bred has lots of extension through her front and is very correct in her structure. Her dam, Maria 26D, has a perfect udder and has been an excellent cow for us. Red ACC Maria 88F is bred to Red Cockburn Assassin 624D.

AI bred to Red Cockburn Assassin 624D on April 25, 2019. Pasture exposed to Red ACC Magnum 196E from May 17 to June 22, 2019. Safe to AI.

Consigned By Anderson Cattle Company Inc, Swan River, MB

66

RED FRASER **Rose** 825F

FEMALE JFRA 825F 2092753 MAR. 4, 2018

FRASER BLACK ANSWER 343A RKY MTN THE ANSWER 10X  
**RED BFL CALE 98C** RED EMMATT MARIA 22X  
 BFL YALENE 42Y BFL ROY 268U  
 BFL SARAH 208P  
 RED BASIN SENSATION 702E GARDENS SENSATION 039 S1  
**RED FRASER ROSE 28X** STEVENSON ELEMRERE 538C  
 RED FRASER ROSE 829U RED STEWART FORMATION 13S  
 RED FRASER ROSE 110L

BW: 86 lbs.

(PE) BW: 3.2 WW: 34 YW: 63 MM: 26 TM:43 MCE: 4.0

Red Fraser Rose 825F is full of proven maternal genetics. 28X has raised a daughter that sold to Bar 4A, she ended up being a high seller in one of their female sales and now resides at Right Cross. She had another daughter that sold through the Touch of Class Sale to Jimmy Wright. She's sired by none other than our Cale bull that we purchased through the Southwest Sale to carry on our Answer line. We just sold our Answer bull last spring at nine years of age and he still walked like a cat. One of the most intriguing parts of this puzzle though, would have to be the early service to MRLA 23F. He was a feature Angus bull in McMillan Ranching's bull sale this past spring. He's a black/red carrier son of S A V Resource that we are very proud of.  
**Pasture exposed to MRLA Resource 23F from April 7 to May 10, 2019.**

Consigned By Fraser Farms, Melita, MB



Rose 825F

67

RED JAS **Lila** 118F

FEMALE JASS 118F 2041309 MAR. 8, 2018

RED TER-RON BAZINGA 13B TER-RON PARK PLACE 18Y  
**RED TER-RON BANGER 19D** RED TER-RON AMBER 46W  
 RED TER-RON GOLDIE 23Y RED LAZY MC KINGMAN 16W  
 RED TER-RON GOLDIE 240L  
 RED KCC PINNACLE 949-109 RED HXC CONQUEST 4405P  
**RED JAS LILA 35C** RED 949 1KCC  
 RED JAS LILA 151U RED SIX MILE RAM TUFF 689S  
 RED JAS LILA 32S

BW: 84 lbs. ADJ WW: 611 lbs.

BW: 1.6 WW: 36 YW: 59 MM: 22 TM:40 MCE: 2.0

Very angular and smooth. Always look forward to the progeny out of 151U.

**AI bred to H2R Profitbuilder B403 on April 20, 2019. Pasture exposed to Red JASS Ethan 11E, an excellent Best Man son out of Cherok cow, from May 28 to August 15, 2019.**

Consigned By JAS Red Angus, Neepawa, MB



Lila 118F

68

RED JAS **Tibbie** 122F

FEMALE JASS 122F 2041312 MAR. 9, 2018

RED MRLA NEW ERA 87Y MRLA 53W  
**RED MRLA 65B** RED MRLA MISS 845S  
 RED MRLA 737R RED GOLD-BAR MERCEDES K116M  
 RED SSS ARSON 85U RED GET-A-LONG EMPRESS 248  
**RED JAS TIBBIE 15A** RED SSS ARSENAL 271S  
 RED JAS TIBBIE 21W RED SSS SCAARA 951L  
 RED LCB LANCER 1202S  
 RED JAS TIBBIE 28T

BW: 87 lbs. ADJ WW: 648 lbs.

BW: 3.4 WW: 53 YW: 88 MM: 22 TM:49 MCE: 5.0

A big, broody, bred heifer. Performance driven beauty here. Have a look people.

**AI bred to Red Cockburn Assassin 624D on April 25, 2019. Pasture exposed to Red JASS Ethan 11E from May 28 to August 15, 2019.**

Consigned By JAS Red Angus, Neepawa, MB



Tibbie 122F

# Red Angus - Bred Heifers

69

RED NU-HORIZON **Ruby Lee** 8038F

FEMALE TK 8038F 2075910 FEB. 25, 2018



Ruby Lee 8038F

RED BENCHMARK BETTER BEE  
**RED SIX MILE KILL SWITCH 135Z**  
 RED SIX MILE FLOWER 424U  
 RED MCRAES CUB 43T  
**RED MAR MAC RUBY LEE 59A**  
 RED MCRAES RUBY LEE 169X  
 RED BASIN EXT 45T5  
 RED FAYETTE OF BENCHMARK 424  
 RED 6 MILE GIBSONS FINEST 771S  
 RED SIX MILE FLOWER 713S  
 RED MLK CRK CUB 722  
 RED MCRAE'S KERRY 61R  
 RED COCKBURN RIBEYE 346U  
 RED MCRAE'S RUBY LEE 48U

BW: 79 lbs. ADJ WW: 564 lbs.

BW: 3.2 WW: 48 YW: 79 MM: 24 TM:48 MCE: 6.0

8038 has been a standout since birth and she has gotten better with age. She is attractive, structurally sound and a daughter of the Denver Champion, Kill Switch. She has an attractive front end and a very maternal sweep to her rib cage. Her Mar Mac dam, 59A, is a graduate from the Keystone Klassic. We will be flushing her this spring back to Kill Switch, as this combination is just outstanding. She makes the good ones year after year with a daughter selling to Jeff Fraser. What makes this one even harder to sell is the fact that she's bred to Red SSS Tactic 651D. Tactic sold a few years ago for \$120,000 and his semen is not easy to get a hold of. Don't miss out on this one! She is made right, bred right and serviced right!

AI bred to Red SSS Tactic 651D on April 13, 2019. Pasture exposed to Red U2 Format 143E from May 30 to July 31, 2019.

Consigned By Nu-Horizon Angus, Lipton, SK

70

RED TRIPLE H **Diamond** 36F

FEMALE HRA 36F 2037234 FEB. 21, 2018



Diamond 36F

RED LAZY MC HUSTLE 18T  
**RED PASQUIA HUSTLE 12B**  
 RED PASQUIA ROSE 22X  
 RED CROWFOOT MOONSHINE 808IU  
**RED PASQUIA DIAMOND 33C**  
 RED PASQUIA DIAMOND 34Y  
 LAZY MC BOOM 44R  
 RED LAZY MC LARKABA 70R  
 RED BRYLOR TOAST 30T  
 RED PASQUIA ROSE 56R  
 CROWFOOT 6004S  
 RED CROWFOOT BRNDINA 6359S  
 RED LCB LANCER 1202S  
 RED PASQUIA BARBARA 28R

BW: 78 lbs. ADJ WW: 629 lbs.

BW: 1.1 WW: 48 YW: 78 MM: 23 TM:47 MCE: 5.0

This girl puts it all together nicely. She is big hipped and sharp fronted with a dark red hide and a smooth clean stride. Our Hustle 12B daughters have been doing a great job raising calves on our farm and have been well received by numerous other breeders who have purchased them from us over the years.

AI bred to Red DKF Racer 8E on April 27, 2019. Pasture exposed to Red GJP Outlander 52E from May 10 to July 15, 2019. Preg checks favourable to AI.

Consigned By Triple H Angus, Cupar, SK

71

RED ROOKE **Fran** 170F

FEMALE RLCC 170F 2041071 FEB. 7, 2018



Fran 170F

RED FLYING K NEPTUNE 28Z  
**RED MAR MAC CARPENTER 24C**  
 RED MCRAES FRAN 51T  
 RED MOOSE CREEK SWAYZE 33Z  
**RED HIGH CALIBER LADY 130C**  
 RED HIGH CALIBER LADY 60X  
 RED BECKTON NEBULA W312 L3  
 RED FLYING K BERRY 9X  
 RED FINE LINE MULBERRY 26P  
 RED MCRAE'S FRADO 53J  
 RED THAT'LL DO UNBELIEVABLE 6U  
 RED MOOSE CREEK GRACE 65S  
 RED ANGUS ACRES KNIGHT 144M  
 HIGH CALIBER LADY 303M

BW: 98 lbs.

BW: 7.3 WW: 36 YW: 59 MM: 21 TM:39 MCE:



Red Rooke Fran 170F  
 Junior Show Champion Heifer  
 Ag Ex 2019

This beautiful female was an easy pick for Chris and a hard decision for us to part with! 170F is a female we have been showing since she was a calf. She attended many summer fairs and was Alice's diligent 4-H heifer project. She is a smaller framed, yet balanced female with great potential out of one of our most favored cows, Red High Caliber 130C. Her table-top width and strong legged posture assures a fantastic future herd cow. Bred to our most promising heifer bull of the year, Red Rooke Monopoly 178F.

Pasture exposed to Red Rooke Monopoly 178F from April 30 to June 3, 2019. Preg checked to calve early February 2020.

Consigned By D & P Rooke Farms, Alexander, MB

## 72

### RED PRIME RIDGE **Sierra** 28F

FEMALE PRS 28F APPLIED FOR JAN. 16, 2018

RED FINE LINE MULBERRY 26P RED COMPASS MULBERRY 449M  
 RED BRYLOR TOAST 30T RED DUS FAYETTE 8G  
 RED BRYLOR SDL MISS LUMIE 214P RED BRYLOR NEW TREND 22D  
 RED LUMONT GOLD STAR 8J  
 SILVER DOME HI GAIN 28J  
 GER-RIS HI GAIN 46U BRIMAR MAC REVA  
**RED PRIME RIDGE RENEGADE 109C** RED HAMCO ROBIN HOOD 176U  
 RED HAMCO RENEGADA 447Y RED HAMCOMISSRENEGADA 135L

BW: 88 lbs. 205 DW: 698 lbs. 365 DW: 1005 lbs.

(PE) BW: -1.4 WW: 25 YW: 48 MM: 21 TM: 32 MCE: 8.0

28F is very long bodied, well put together female backed by Toast 30T and the Mulberry family. Toast 30T progeny are few and far between, so don't miss out on sale day! Her dam, 109C, is well footed with lots of milk. Bred to Red Brylor RSTD High Capacity, a well known, long bodied heifer bull who produces excellent Angus females.

**AI bred to Red Brylor RSTD High Capacity on April 15, 2019.**

Consigned By Prime Ridge Stock Farms, Fisher Branch, MB



Sierra 28F

## 73

### RED PRIME RIDGE **Jet Stream** 30F

FEMALE PRS 30F 2070480 JAN. 16, 2018

RED BRYLOR SDL PASQUALE 213P RED VGW RAMBLER 1000  
**RED BRYLOR SDL SQUALL 230S** RED XXX LAKME 70M  
 RED CYT FANNY 15P RED BRYLOR STALLION 46M  
 RED SIX MILE TIMBERLAKE 180T  
 RED SIX MILE FLOWER 713S  
**RED RIDGE SIDE M5TIMERLINE 35** RED 5L TRAVLIN EXP 1892-6295  
 RED RIDGE SIDE COLEEN 35U RED RIDGE SIDE COLEEN 35R

BW: 65 lbs. 205 DW: 605 lbs. 365 DW: 852 lbs.

BW: -3.3 WW: 31 YW: 49 MM: 14 TM: 30 MCE: 12.0

30F is a very fancy female with unique genetics backed from Brylor Ranch and Six Mile Angus. Her dam, 35Z, is a good footed, long bodied female that checks all the boxes in an Angus female. Bred to JLL Final Deal 78Z, who was sold for a 1/3 interest and full possession this past spring in WRAZ's bull sale. The only 78Z daughter sold to date was an open heifer, Red WRAZ Pteet 112F for \$5,500. This female was very hard to part with. Think of the possibilities that this well bred female can produce for your Angus herd.

**AI bred to JLL Final Deal 78Z on May 23, 2019.**

Consigned By Prime Ridge Stock Farms, Fisher Branch, MB



Jet Stream 30F

## Terms & Conditions

### Terms:

The terms of the sale are cash or cheque, payable at par at the sale location. The right of property shall not pass until after settlement has been made; no invoicing on buyers in attendance unless previous arrangements have been made. Every animal sells to the highest bidder and in cases of disputes, the auctioneer's decision will be final. Announcements from the auction block will take precedence over the printed matter in the catalogue. Current exchange rates will be announced sale day. All monies are in Canadian funds.

### Certificate of Registration:

Each animal will carry papers issued by the Canadian Angus Association. A certificate of registry duly transferred will be furnished to the buyer for each animal after payment has been made.

### Health:

All animals in the sale have met all necessary health requirements.

### Liabilities:

All persons attend the sale at their own risk. The seller, facility owner and sale manager assume no liability legal or otherwise, for any accidents that occur. It is understood that T Bar C Cattle Co. (2013) Ltd. is acting only as a medium between buyer and seller and is not responsible for any failure on the part of either party to live up to his obligations. Neither does T Bar C Cattle Co. (2013) Ltd. assume any financial obligations to collect or enforce collection of any monies between parties and any legal action that may in exceptional cases be taken must be between the buyer and the seller. T Bar C Cattle Co. (2013) Ltd. assumes no responsibility for any credit extended by the seller to the buyer. The buyer must look to the seller for fulfillment of all guarantees and representations made hereunder.

### Guarantee:

Each animal becomes the purchaser's risk immediately after the animal is sold. All animals in this sale will be sold under the terms and guarantees set forth by the Canadian Angus Association with regard to health, freedom from defects and from both reproductive and specific genetic unsoundness.

### Pregnancy Information:

All serviceable age females have been pregnancy examined by an accredited veterinarian, giving an estimated length of gestation. This estimated gestation period shall be used only as a guideline to calving and is not a guarantee of actual service.

### Delivery:

Assistance will be given in getting your purchases home. Each animal becomes the risk of the purchaser as soon as sold.

### Phone, Mail, Wire Bids:

Bidders unable to attend the sale may phone, wire or mail their bids and instructions to the sale manager, auctioneer or special representatives. Bids must be received in sufficient time prior to the sale.

### Insurance:

We strongly recommend that insurance is purchased for full value.

### Errors:

All announcements at sale time, written or oral, supercede any written material in the catalogue.

## Black Angus - Consignors

### Anderson Cattle Co. Inc.

#### LOT 34

Bruce, Ione, Breanna,  
Austen & Katie Anderson  
Comp 2 RR 2  
Swan River, MB R0L 1Z0  
P: 204-734-2073  
andersoncattle@inethome.ca  
www.andersoncattle.ca

### Angus Valley Farm

#### LOT 17

Bruce McRae  
Box 555  
Manitou, MB R0G 1G0  
P: 204-242-4502  
bruce.mcrae65@icloud.com

### BASKM Land & Cattle Inc.

#### LOT 29

Matt Ginter  
Box 123  
Riding Mountain, MB R0J 1T0  
P: 204-967-2721  
matthew\_ginter@hotmail.com

### Bootis Black Angus

#### LOT 54

Timmy Nowlan  
RR 1  
Ste Rose Du Lac, MB R0L 1S0  
P: 204-448-2756  
gigglene@hotmail.com

### Cranberry Creek Angus

#### LOTS 15 & 16

Dave and Jeanette Neufeld  
Box 171  
Boissevain, MB R0K 0E0  
P: 204-534-2380  
cranberrycreek27@gmail.com

### Diamond D Ranch

#### LOT 30

Devon Donald  
Box 134  
Rossendale, MB R0H 1C0  
P: 204-252-2554  
C: 204-871-2350  
devon.angusranch@hotmail.com

### DJ Cattle Co.

#### LOTS 2 & 3

Dallas & Lynne Johnston  
Box 2  
Brookdale, MB R0K 0G0  
P: 204-354-2011  
C: 204-841-3880  
dlrc@mymts.net

### Dusty Rose Cattle Company

#### LOTS 8A & 8B

Randy & Laurie James  
Box 67, Arcola, SK S0C 0G0  
P: 306-575-7833  
jamesoilfield@sasktel.net

### Eastondale Angus

#### LOTS 12 & 51

Dale, Shelly and Erika Easton  
Herdsman:  
Nolan Glover: 306-575-6955  
Box 410  
Wawota, SK S0G 5A0  
P: 306-739-2805  
C: 306-577-7456  
eastondale.angus@sasktel.net  
www.eastondaleangus.com

### Fairlight Farm

#### LOT 9

Dale & Nanette Glover  
Herdsman:  
Nolan Glover: 306-575-6955  
Box 125  
Boissevain, MB R0K 0E0  
P: 204-534-2552  
nanette@gloverequine.com

### HBH Angus Farms Inc.

#### LOTS 36 - 41

Box 94  
Oak River, MB, R0K 1T0  
Neil Carson  
P: 204-773-6927  
neilcarson1973@gmail.com  
Darcy Heapy  
P: 204-365-7755  
dheapy@mymts.net  
hbhangusfarms.com

### Jaymarandy Livestock

#### LOTS 8A & 8B

Mark & Elisabeth Angus  
Box 1273  
Beausejour, MB R0E 0C0  
P: 204-281-5099  
jaymarandy@gmail.com  
www.jaymarandylivestock.com

### Legaarden Livestock

#### LOTS 10 & 11

Jeff & Kim Legaarden  
RR 2  
Grandview, MB R0L 0Y0  
P: 204-546-3052  
C: 204-648-5254  
jlegaarden@masc.mb.ca

### Madsen Angus

#### LOTS 18, 19, 50A & 50B

Tom & Alanna Madsen  
Box 223  
Arden, MB R0J 0B0  
P: 204-368-2335  
hollymadsen98@gmail.com

### Mainstream Genetics

#### LOTS 20 & 35

Chris Schmidt  
Box 547  
Watrous, SK S0K 4T0  
P: 306-946-7948  
chris@mainstreamgenetics.ca

### Mar Mac Farms

#### LOT 21

Blair and Lois McRae and Family  
Box 57 RR1  
Brandon, MB R7A 5Y1  
P: 204-728-3058  
C: 204-573-5192  
marmacfarms1@gmail.com  
www.marmacfarms.net

### McRae Land & Livestock

#### LOTS 48 & 49

Brett McRae  
Box 58 RR1  
Brandon, MB R7A 5Y1  
P: 204-729-1018  
brett.mcrae@icloud.com

### NB Cattle Co.

#### LOTS 13 & 14

Nicholas Bray  
Box 1  
Eddystone, MB R0L 0S0  
P: 204-447-7203  
nbcattle.nbcc@gmail.com

### NYK Cattle Company

#### LOTS 52 & 53

Cameron & Kaitlin Nykoliation  
Box 2  
Douglas, MB R0K 0R0  
P: 204-761-3302  
cnykoliation@gmail.com

### Ossawa Angus Farm

#### LOTS 25 & 26

Elaine Keen-Porteous  
Box 35  
Marquette, MB R0H 0V0  
P: 204-375-6658  
keporteous@highspeedcrow.ca

### Ramrod Cattle Co.

#### LOTS 5 & 6

Tony, Jody & Lacey Dekeyser  
Box 67  
Medora, MB ROM 1K0  
P: 204-665-2424  
C: 204-264-0270  
ramrod@xplornet.ca

### Right Cross Ranch

#### LOT 22

Jim & Sarah Anderson  
Box 100  
Kisbey, SK S0C 1L0  
Jim: 306-575-7608  
Sarah: 306-575-7609  
rightcrossranch@hotmail.com  
www.rightcrossranch.com

**Stewart Cattle Co. Ltd.**  
**LOTS 4 & 33**  
Brent & Dale Stewart  
Kelsey & Tyler Thompson  
Box 908, Russell, MB R0J 1W0  
P: 204-773-2356  
C: 204-773-6392  
stewartcows@wificountry.ca  
www.stewartcattle.com

**Sunny Grove Angus**  
**LOTS 23 & 24**  
Desmond Rasmussen  
Box 822  
Radville, SK S0C 2G0  
P: 306-869-2801  
C: 306-869-7151  
sunnygrove@sasktel.net

**Anderson Cattle Co. Inc.**  
**LOT 65**  
Bruce, Ione, Breanna,  
Austen & Katie Anderson  
Comp 2 RR 2  
Swan River, MB R0L 1Z0  
P: 204-734-2073  
andersoncattle@inethome.ca  
www.andersoncattle.ca

**D & P Rooke Farms**  
**LOTS 60 & 71**  
Penny Rooke  
Box 68  
Alexander, MB R0K 0A0  
P: 204-752-2073  
C: 204-573-2082  
penny@rookefarms.ca

**Fraser Farms**  
**LOTS 55, 56 & 66**  
Jeff, Nancy & Jack Fraser  
Box 44  
Melita, MB R0M 1L0  
P: 204-686-2281  
C: 204-522-5964  
jeff.fraser@live.ca

**JAS Red Angus**  
**LOTS 57, 58, 67 & 68**  
Doug & Jane McLaren  
Jason & Leslie McLaren  
Box 373  
Neepawa, Manitoba R0J 1H0  
Doug: 204-476-6248  
Jason: 204-476-6723  
Doug: jmdfarms@mts.net  
Jason: mclarenj@hotmail.com  
www.jasredangus.com

**Wilbar Cattle Co.**  
**LOTS 7 & 32**  
Bryan & Tracey Willms  
Box 176  
Dundurn, SK S0K 1K0  
P: 306-492-7504  
traceywillms@gmail.com  
wilbarcattle@gmail.com

**Wild West Angus**  
**LOTS 27, 28, 31A & 31B**  
Jaceline Klessens  
Box 672  
Altona, MB R0G 0B0  
P: 204-304-1750  
klessensmfg@gmail.com

**Mar Mac Farms**  
**LOT 63**  
Blair and Lois McRae and Family  
Box 57 RR1  
Brandon, MB R7A 5Y1  
P: 204-728-3058  
C: 204-573-5192  
marmacfarms1@gmail.com  
www.marmacfarms.net

**Nu-Horizon Angus**  
**LOT 69**  
Kieran, Deb & Kodie Doetzel  
Box 227  
Lipton, SK, S0G 3B0  
P: 306-336-2245  
C: 403-357-7648  
Kodie: 306-331-0384  
kdknuhorizon@gmail.com

**Prime Ridge Stock Farms**  
**LOTS 72 & 73**  
Chris Shepell  
Box 493  
Fisher Branch, MB R0C 0Z0  
P: 204-372-6051  
C: 204-739-8085  
primeridge\_3@hotmail.com

**Ramrod West**  
**LOT 59**  
Tyler & Rheanne Dekeyser  
Box 869  
Redvers, SK S0C 2H0  
C: 306-840-7701  
dekeysertyler@gmail.com

## Black Angus - Consignors

**Young Dale Angus**  
**LOTS 1, 42 to 47**  
Barry, Marj & Robb Young  
Box 28  
Carievale, SK S0C 0P0  
Barry: 306-482-7952  
Robb: 306-339-8311  
youngdaleangus@xplornet.com  
www.youngdaleangus.com

## Red Angus - Consignors

**Ravenbrook Red Angus**  
**LOTS 62**  
Travis Froese  
Box 9  
Grunthal, MB R0A 0R0  
P: 204-905-1617  
ravenbrookfarms@gmail.com

**Right Cross Ranch**  
**LOT 61**  
Jim & Sarah Anderson  
Box 100  
Kisbey, SK S0C 1L0  
Jim: 306-575-7608  
Sarah: 306-575-7609  
rightcrossranch@hotmail.com  
www.rightcrossranch.com

**Triple H Cattle Co. Ltd.**  
**LOT 70**  
Perry, Dawn & Cory Hart  
Box 531  
Cupar, SK S0G 0Y0  
P: 306-723-4832  
C: 306-726-7671  
triplehredangus@gmail.com

**Wilbar Cattle Co.**  
**LOT 64**  
Bryan & Tracey Willms  
Box 176  
Dundurn, SK S0K 1K0  
P: 306-492-7504  
traceywillms@gmail.com  
wilbarcattle@gmail.com

Return Undeliverable  
Canadian Addresses To:

**T Bar C Cattle Co.**  
Box 2330  
Warman, SK  
S0K 4S0



**Catalogue By:**

