

THE
FEMALE

FOCUS

PRODUCTION SALE

WEDNESDAY, DECEMBER 18, 2019 - 1:00 PM



AT THE FARM, NEUDORF, SK

HOLLINGER LAND AND CATTLE



Welcome to our first ever Fall Female Production Sale. We are very pleased to be working together with Jordan Sies and his family at J Square S Angus, as well as Chris Schmidt and family at Mainstream Genetics. This sale has been a vision of mine for quite some time and this year we decided it was time to make it happen. I strongly feel that the cattle that we have assembled are as good as any you'll find across the country this fall. If you study the paperwork, these cattle are loaded with industry leading genetics. Many are carrying services to new or outcross bulls that will certainly keep things exciting with the anticipation of calving right around the corner. We've put together a small, but exceptional, group of heifer calves that would certainly go out and be extremely competitive as a junior project for someone, as well, they would fit into almost any breeding program.

We hope you can join us on December 18. If you are unable to attend and would like to view the cattle, videos will be online for your convenience. We are pleased to be working with the crew at T Bar C, as well as DLMS and Bohrson Marketing this year. If you have any questions or need an appraisal by one of our team, don't hesitate to give any of us a call, we'd be more than happy to answer any questions you have. We look forward to seeing you sale day!



Box 276, Neudorf, SK S0A 2T0
hollingerlandandcattle@gmail.com
Chad: 306-331-0302 (cell)
Trevor: 306-748-2704 (home) | 306-728-8422 (cell)
Josh: 306-335-7580 (cell)
Herdsman: Mark Piller: 306-730-7170 (cell)

J SQUARE S ANGUS



Welcome to the First Annual Female Focus Production Sale. We are extremely excited to team up with Hollinger Land and Cattle to bring you an exciting set of Angus females.

Our sale offering consists of a feature cow/calf pair, choice on full sisters and our entire bred heifer pen. The Density cow and her Black Gold heifer calf are a pair we are truly proud of. Brookmore Karama 204X is a beautiful cow with a great udder. We will be campaigning her heifer calf at Canadian Western Agribition, so we invite you to stop by to pay her a visit. She is worth it. The full sisters on choice are sired by Musgrave Sky High 1535 and out of one of our donor cows here, Northern View Ruth 82Z. The bred heifers are a solid group of females that we are very proud of and are carrying some very exciting services.

All of the bred heifers were bred as if we were keeping them all. They are carrying services to HF Alcatraz, FF Black Gold and our new heifer bull, VNDY TCCO Toonie. Toonie is a Bank Note son out of the popular Ponderosa Fay cow. Don't forget his calves qualify for the Rose Bowl Sale coming up in 2020.

We will have a string of cattle at Canadian Western Agribition and invite you to stop by for a visit.

Videos of the sale offering can be found online at Cattlevids.ca.

If you have any questions, please feel free to contact myself or any of our sales staff at T Bar C, Bohrson Marketing or DLMS.

Hope to see you at the sale,

Jordan Sies



Jordan & Jacklyn, Jayla & Scottie Sies

Stuart & Kathy

Box 8, Grayson, SK S0A 1E0

sieser94@hotmail.com

C: 306-728-1299

www.jssangus.com



THE FEMALE FOCUS PRODUCTION SALE

FEMALE FOCUS PRODUCTION SALE

Wednesday, December 18, 2019 - 1:00 PM - At the Farm, Neudorf, SK

Directions to the farm:

From Neudorf - 4 Miles west on HWY 22. North 1 mile at mile marker 12.

From HWY 10 on the west side of Duff turn and head south 10 miles.

Watch for signs.

SALE STAFF

Auctioneer

Chris Poley 306-220-5006

Ringmen

Shane Michelson 403-363-9973

Ben Wright 519-374-3335

Sale Day Phones

Chad Hollinger 306-331-0302

Trevor Hollinger 306-728-8422

Josh Hollinger 306-335-7580

Jordan Sies 306-728-1299

Roger Reynolds 306-536-6112

Mark Piller 306-730-7170

Sale Consultants

Bohrson Marketing Services 306-270-6082

Scott Bohrson 403-370-3010#

Matt Criddle 306-539-6934#

Internet Bidding Available

DLMS
www.dlms.ca

For more information call DLMS:
Mark Shologan 780.699.5082 or
DLMS Purebred Team 780.991.3025

Insurance

Alameda Agencies Ltd. Bonnie Thompson 306-489-2258

Guest Consignor

Mainstream Genetics

Chris Schmidt 306-946-7948

Box 547, Watrous, SK S0K 4T0

chris@mainstreamgenetics.ca

VIDEOS ONLINE AT CATTLEVIDS.CA

FROM THE DESK AT T BAR...

Welcome to the First Annual Female Focus Production Sale on Wednesday, December 18 at the farm of Hollinger Land and Cattle. Together, with J Square S, the Sies family and guest consignor Chris Schmidt, Mainstream Genetics, the Hollinger Family have put together an outstanding group of seedstock for your appraisal.

The offering is rich...rich in quality and rich in genetics! The females are sired by leading bulls in the industry which will add value to your program. The bred heifer division is powerful in phenotype, stout and broody carrying services to the newest sires in the industry. The heifer calves are exciting and competitive, many suitable to put a halter on and campaign next summer and be assured they will make the front pasture as brood cows.

Plan to be with us for the premiere of "Female Focus", the source of superior seedstock. Feel free to visit the farms and preview the offerings; make sure to stop by their displays at Agribition for a chat. Remember that this time of the year is near tax year-end...I know how many of you like to send your profits to pay for our leaders next vacation!

If we, at T Bar C, may be of assistance, prior to or sale day, please contact any of the T Bar team and we will be pleased to offer our professional services.

CHRIS POLEY



Sale Management

T Bar C Cattle Co. Ltd

Box 2330

Warman, Saskatchewan S0K 4S0

P: 306-933-4200 info@tbarc.com



Chris Poley
306-220-5006



Shane Michelson
403-363-9973



Ben Wright
519-374-3335

VIEW THE CATALOGUE ONLINE AT WWW.BUYAGRO.COM

**CHOICE
LOT**



HLC PONDEROSA **BLACKBIRD 574G**



• Female • 2091855 • CHD 574G • 02/03/2019
 • BW: lbs. • ADJ WW: lbs. • ADJ YW: lbs.

EPDS	BW	WW	YW	Milk	TM
	4.4	62	104	27	58

S A V CUTTING EDGE 4857
 MICH WHEATLAND LEADING EDGE
 COPPER CRK LADY 1210

EXAR EMBLAZON 1749B
 PONDEROSA 1749 BLACKBIRD 136A
 EXAR ENVIOUS BLACKBIRD 1719

S A V HARVESTOR 0338
 S A V BLACKCAP MAY 5530
 EXAR LUTTON 1831
 CHERRY KNOLL LADY LOLA
 RITO 6EM3 OF 4L1 EMBLAZON
 EXAR FOREVER LADY 5563
 DAMERON FIRST CLASS
 RR ENVIOUS BLACKBIRD 1920

One of the most interesting genetic packages we have ever offered. She is one of the first females to sell sired by, \$50,000 MICH Wheatland Leading Edge 7193, a bull we purchased in partnership with Dusty Rose Cattle Co. Blackbird 574G is exceptional in terms of her overall design. She is up headed, smooth and feminine though her front third, big ribbed, sound and functional at the ground with a great foot and added bone. Her dam 136A, is one of our newest donors and we are extremely excited for the future of this foundation female.

Reserving the right to one flush at our expense and buyer's convenience



Ponderosa 1749 Blackbird 136A - Dam



Mich Wheatland Leading Edge - Sire

**CHOICE
LOT**



IB

HLC PONDEROSA BLACKBIRD 520G

LOT **IB**

• Female • Applied For • CHD 520G • 02/02/2019
 • BW: lbs. • ADJ WW: lbs. • ADJ YW: lbs.

(PE) EPDS	BW	WW	YW	Milk	TM
	4.7	61	104	27	57

- S A V HARVESTOR 0338
- S A V CUTTING EDGE 4857
- S A V BLACKCAP MAY 5530

- EXAR EMBLAZON 1749B
- PONDEROSA 1749 BLACKBIRD 136A
- EXAR ENVIOUS BLACKBIRD 1719

- S A V HERITAGE 6295
- S A V EMBLYNETTE 7749
- B C C BUSHWACKER 41-93
- S A V MAY 7238
- RITO 6EM3 OF 4L1 EMBLAZON
- EXAR FOREVER LADY 5563
- DAMERON FIRST CLASS
- RR ENVIOUS BLACKBIRD 1920

A ¼ sister to Lot 1A sired by Cutting Edge and out of the same great 136A donor. We've decide to let you decide which heifer will remain in our herd and which will go on to work for her new owner. 520G is stout made, level and correct in her lines, has a great set of feet, legs and is about as big middled as you can make one. Don't miss out on this opportunity!

Reserving the right to one flush at our expense and buyer's convenience



Ponderosa 1749 Blackbird 136A - Dam



S A V Cutting Edge 4857 -Sire

THE FEMALE FOCUS PRODUCTION SALE



An outstanding daughter of Leading Edge and out of the great Miss Marion cow family, this female combines one of the most prolific cow families to walk our pastures, with a bull who will, without a doubt, leave his mark with the progeny he sires. Leading Edge was a bull we had the misfortune of losing shortly after his first breeding season. Semen is in very short supply, don't miss out on the opportunity to own one of the very few to be selling in 2019.

HLC MISS MARION 450G



• Female • 2091867 • CHD 450G • 04/01/2019
 • BW: lbs. • ADJ WW: lbs. • ADJ YW: lbs.

(FE) EPDS	BW	WW	YW	Milk	TM
4.2	58	100	23	52	

S A V CUTTING EDGE 4857
 MICH WHEATLAND LEADING EDGE
 COPPER CRK LADY 1210

SANKEYS JUSTIFIED 101
 HLC MISS MARION 749D
 DOUBLE D MISS MARION 20R

S A V HARVESTOR 0338
 S A V BLACKCAP MAY 5530
 EXAR LUTTON 1831
 CHERRY KNOLL LADY LOLA
 SANKEYS LAZER 609 OF 6N
 SANKEYS ERICA 525
 DOUBLE D BARDOLENE 15L
 ALLENCROFT MISS MARION 09 41E

HLC ERROLINE 447G



• Female • 2091865 • CHD 447G • 02/01/2019
 • BW: lbs. • ADJ WW: lbs. • ADJ YW: lbs.

EPDS	BW	WW	YW	Milk	TM
2.7	56	99	25	53	

S A V BRILLIANCE 8077
 PVF INSIGHT 0129
 PVF MISSIE 790

S A V NET WORTH 4200
 PFLC ERROLINE 37E
 PFLC ERROLINE 37Z

S A V BISMARCK 5682
 S A V BLACKCAP MAY 5270
 P V F NEW HORIZON 001
 P V F MISS RAPTOR 024
 S A V 8180 TRAVELER 004
 S A V MAY 2410
 PVF ALL PAYDAY 729
 CF MY TIME



Here is a calf that will be competitive in the show ring as well as a true asset as a breeding female. Sired by Insight and out of a Net Worth x Erroline, she offers a unique pedigree with an excellent EPD profile. 447G is stout made, extra long bodied and very attractive with an ultra feminine look.



PVF Insight 0129 - Sire

One of the first female we've offered sired by our 2017 Toronto Royal Reserve Champion Bull, Cross Fire 569C. She is stout made, big middled and is sure to have an exceptional udder.

AI bred to Ellingson Top Shelf 5050 on May 5, 2019 (safe).

Exposed to HLC Grit 310F from May 24 to June 6 and then to Brooking Renewal 8100 from June 10 to July 4, 2019.



HLC 101 Cross Fire 569C - Sire

HLC PRIDE 416F



• Female • 2090783 • CHD 416F • 21/02/2018
 • BW: 85 lbs. • ADJ WW: 583 lbs. • ADJ YW: 952 lbs.

EPDS	BW	WW	YW	Milk	TM
5.4	40	78	20	40	

SANKEYS JUSTIFIED 101
HLC 101 CROSS FIRE 569C
 JL CHARISE 3159

HLC 1220 SLOW RIDE 266A
HLC PRIDE 739D
 DOUBLE D 126 PRIDE 3R

SANKEYS LAZER 609 OF 6N
 SANKEYS ERICA 525
 S A V HARVESTOR 0338
 JUSTAMERE 0405 CHARISE 361N
 JL WARDEN 1220
 HLC MISS MARION 5X
 BAR-E-L RAINMAKER 102M
 ALLENCROFT PRIDE 10 35E

HLC LADY WHITNEY 411F



• Female • 2040043 • CHD 411F • 18/02/2018
 • BW: 90 lbs. • ADJ WW: 592 lbs. • ADJ YW: 984 lbs.

EPDS	BW	WW	YW	Milk	TM
4.7	55	99	18	46	

VISION UNANIMOUS 1418
BROOKING UNANIMOUS 6102
 LADY OF PEAK DOT 476S

MUSGRAVE FOUNDATION
JL LADY WHITNEY 4047
 JL LADY WHITNEY 8051

VISIONTOPLINE ROYAL STOCKMAN
 VISION EDELLA 665
 HF POWER-UP 72N
 LADY OF PEAK DOT 566N
 KESSLERS FRONTMAN R001
 MCATL BLACKCAP JUARA 29-434
 S A V YOUNG JOCK 6457
 JL LADY WHITNEY 06 73

A female I love for her ultra feminine look, matched with a ton of rib and substance. Here is one I think is a real sale feature. The Unanimous females are possibly the most consistent set we have ever raised. They are ideal in terms of frame size as well as structure and soundness.

AI bred to Boyd Cartwright 3303 on April 10, 2019.

Exposed to HLC Grit 310F from April 22 to July 3, 2019 Due beginning of February.





A female I love for her overall design and structure. She's sound on the move and has an exceptional "look" from every angle. The youngest female in the bred heifer division but one my favourites. Her dam is a great uddered Fortify daughter that never disappoints.

AI bred to Koupal Kozi 418 on May 4, 2019 (safe).

Exposed to HLC Grit 310F from May 24 to June 6 and then to Brooking Renewal 8100 from June 10 to July 4, 2019.



Koupal Kozi 418 - Service Sire

HLC RUBY 435F



• Female • 2040055 • CHD 435F • 15/03/2018
 • BW: 87 lbs. • ADJ WW: 610 lbs. • ADJ YW: 904 lbs.

EPDS	BW	WW	YW	Milk	TM
5.1	48	82	19	43	

VISION UNANIMOUS 1418
 BROOKING UNANIMOUS 6102
 LADY OF PEAK DOT 476S

EXAR FORTIFY 1447B
 JUSTAMERE 1447 RUBY 639B
 SABA 406S RUBY 50Y

VISIONTOPLINE ROYAL STOCKMAN
 VISION EDELLA 665
 HF POWER-UP 72N
 LADY OF PEAK DOT 566N

S A V BISMARCK 5682
 EXAR BLACKBIRD 1096
 JUSTAMERE 253 BADA BING 406S
 S.A.B.A. RUBY 15U

HLC TIP TOP 429F



• Female • 2040052 • CHD 429F • 09/03/2018
 • BW: 75 lbs. • ADJ WW: 623 lbs. • ADJ YW: 949 lbs.

EPDS	BW	WW	YW	Milk	TM
1.9	48	85	18	42	

VISION UNANIMOUS 1418
 BROOKING UNANIMOUS 6102
 LADY OF PEAK DOT 476S

S A V ANGUS VALLEY 1867
 HLC 1867 TIP TOP 585C
 MVF TIP TOP 9X

VISIONTOPLINE ROYAL STOCKMAN
 VISION EDELLA 665
 HF POWER-UP 72N
 LADY OF PEAK DOT 566N

S A V IRON MOUNTAIN 8066
 S A V MAY 2397
 GDAR GAME DAY 449
 MVF TIP TOP 319T



One of the deepest sided females in the entire offering. This heifer goes back to one of the top females in our herd, Tip Top 9X. She's a moderate framed cow with an exceptional udder that keeps cranking them out! Be sure to mark this female on sale day.

AI bred to Ellingson Top Shelf 5050 on April 14, 2019 (safe).

Exposed to HLC Grit 310F from May 5 to June 6 and then to Brooking Renewal 8100 from June 10 to July 4, 2019.



Ellingson Top Shelf 5050 - Service Sire

Quite possibly my favourite female in the entire offering. She's deep bodied, level chested, wide based, big topped, smooth fronted and ultra sound. She is carrying a service to one of Semex's most interesting new bulls, Rhombus. I had the pleasure of analyzing this bull while touring the stud and I knew right then that I needed to use that bull. He has an amazing EPD profile with a BW 1.1, WW 79, YW 141, that puts him in the top 1% of the breed for Weaning and Yearling Weight.

AI bred to Schiefelbein Rhombus 4937 on April 20, 2019 (safe). Exposed to HLC Grit 310F from May 10 to June 6 and then to Brooking Renewal 8100 from June 10 to July 4, 2019.



Schiefelbein Rhombus 4937- Service Sire



HLC FUTURE MARKER 380F



• Female • 2040026 • CHD 380F • 08/02/2018
 • BW: 83 lbs. • ADJ WW: 588 lbs. • ADJ YW: 933 lbs.

EPDS	BW	WW	YW	Milk	TM
3.3	39	61	20	40	

EXAR CLASSEN 1422B
 MICH MOB BOSS 1425
 RR ENVIOUS BLACKBIRD 4487

BANDURA MASTER PIECE 9X
 GGA FUTURE MARKER 9Z
 SOUTHLAND FUTURE MARKER 196X

DAMERON FIRST CLASS
 EXAR PRINCESS 2006
 EXAR MERIT 216
 RR ENVIOUS BLACKBIRD 0290
 S A V MASTERPIECE 5289
 HF TIBBIE 193S
 SOUTHLAND FX 60T
 SOUTHLAND FUTURE MARKER 137U

HLC BLACKCLASS 363F



• Female • 2040018 • CHD 363F • 01/02/2018
 • BW: 86 lbs. • ADJ WW: 589 lbs. • ADJ YW: 934 lbs.

EPDS	BW	WW	YW	Milk	TM
4.3	46	74	15	38	

EXAR CLASSEN 1422B
 MICH MOB BOSS 1425
 RR ENVIOUS BLACKBIRD 4487

SPRUCE VIEW RENOVATOR 182U
 HLC BLACKCLASS 7X
 DOUBLE D 6M BLACKCLASS 43R

DAMERON FIRST CLASS
 EXAR PRINCESS 2006
 EXAR MERIT 216
 RR ENVIOUS BLACKBIRD 0290
 SPRUCE VIEW RENOVATOR 51R
 RIVERCREST ANNE 12J
 JOHNSTON BANDOLIER 170F
 DOUBLE D BLACKCLASS 6M

A female that traces back to one of our Foundation females Blackclass 43R, a cow that never missed. 363F is a brood cow in the making! Deep bodied, soggy made, big topped, as well as super functional and sound. She could be the next great donor female you have been searching for.

AI bred to Ellingson Top Shelf 5050 on April 20, 2019 (safe). Exposed to HLC Grit 310F from May 10 to June 6 and then to Brooking Renewal 8100 from June 10 to July 4, 2019.





10

A direct daughter of the great Blacklass 43R cow and out of Mob Boss, she's a 3/4 sister to 363F. Everything about this heifer is right. I love her frame size and structure, as well as the "look" she possesses. If cow families tell you anything, this female will be a true asset to add to any breeding program.

AI bred to Sankeys Justified 101 on May 5, 2019 (safe).

Exposed to HLC Grit 310F from May 24 to June 6 and then to Brooking Renewal 8100 June 10 to July 4, 2019.



Sankeys Justified 101 - Service Sire

HLC BLACKLASS 357F

LOT 10

- Female • 2040016 • CHD 357F • 30/01/2018
- BW: 90 lbs. • ADJ WW: 552 lbs. • ADJ YW: 885 lbs.

EPDS	BW	WW	YW	Milk	TM
5.1	41	65	14	35	

EXAR CLASSEN 1422B
MICH MOB BOSS 1425
RR ENVIOUS BLACKBIRD 4487

JOHNSTON BANDOLIER 170F
DOUBLE D 6M BLACKLASS 43R
DOUBLE D BLACKLASS 6M

DAMERON FIRST CLASS
EXAR PRINCESS 2006
EXAR MERIT 216
RR ENVIOUS BLACKBIRD 0290
BROOKSIDE BANDOLIER 12U
JOHNSTON MAX TRADITION 370A
C H QUANTUM 3330
BELL BLACKLASS 13H

HLC MAXINE 294F

LOT 11

- Female • 2039998 • CHD 294F • 19/01/2018
- BW: 84 lbs. • ADJ WW: 541 lbs. • ADJ YW: 886 lbs.

EPDS	BW	WW	YW	Milk	TM
2.4	43	80	20	42	

O C C PAXTON 730P
COLEMAN CHARLO 0256
BOHI ABIGALE 6014

BELL NET RETURN 3U
NORTHERN VIEW MAXINE 23Y
NORTHERN VIEW MAXINE 11U

O C C FOCUS 813F
O C C BLACKBIRD 736K
SITZ TRAVELER 8180
S A V ABIGALE 6062
S A V NET WORTH 4200
BELL MS PRIDE 16L
WINDY WILLOWS AMBUSH 143P
NORTHERN VIEW MAXINE 3S

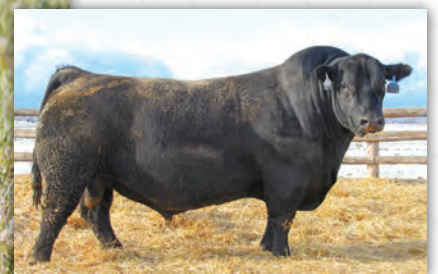


11

A female with an outcross pedigree, carrying an early service to Stunner himself. She is sure not to disappoint. She is stout made, wide pinned and moderate in her design. Her dam 23Y was a never miss cow that simply clicked no matter how she was bred.

AI bred to Musgrave 316 Stunner on April 20, 2019 (safe).

Exposed to HLC Grit 310F from May 10 to June 6 and then to Brooking Renewal 8100 from June 10 to July 4, 2019.



Coleman Charlo 0256 - Sire

A maternal sister to Lots 1A and 1B, here is a heifer that is bold in her design, with as much width of base as any I've come across. She's deep ribbed, nice fronted and moderate framed. We think a lot of this cow family!

AI bred to Stevenson Turning Point on April, 24, 2019.

Exposed to HLC Grit 310F from May 14 to June 6 and then to Brooking Renewal 8100 from June 10 to July 4, 2019.

Due mid-February.



HLC PONDEROSA BLACKBIRD 407F



• Female • 2050090 • CHD 407F • 17/03/2018
• BW: 76 lbs. • ADJ WW: 810 lbs. • ADJ YW: 1137 lbs.

EPDS	BW	WW	YW	Milk	TM
1.3	62	105	23	54	

C&C MCKINLEY 3000 EXAR
C&C TACTICAL 5003C
EXAR PENNY 0485

EXAR EMBLAZON 1749B
PONDEROSA 1749 BLACKBIRD 136A
EXAR ENVIOUS BLACKBIRD 1719

DAMERON FIRST CLASS
RAC WINNIE 7456
EXAR LUTTON 1831
EXAR PENNY 5178
RITO 6EM3 OF 4L1 EMBLAZON
EXAR FOREVER LADY 5563
DAMERON FIRST CLASS
RR ENVIOUS BLACKBIRD 1920

HLC ALICE 270F



• Female • 2039989 • CHD 270F • 10/01/2018
• BW: 75 lbs. • ADJ WW: lbs. • ADJ YW: 937 lbs.

EPDS	BW	WW	YW	Milk	TM
3.3	48	76	18	42	

SILVEIRAS STYLE 9303
SILVEIRAS S SIS GQ 2353
K N C CABIN CREEK SANDY 804

MICH MOB BOSS 1425
HLC MS ALICE 817D
JL MS ALICE 3256

GAMBLES HOT ROD
SILVEIRAS ELBA 2520
B C LOOKOUT 7024
K N C CABIN CREEK SANDY
EXAR CLASSEN 1422B
RR ENVIOUS BLACKBIRD 4487
S A V POTENTIAL 0205
HOWE MS ALICE 155N

The only daughter of GQ to sell in the entire offering and boy do I like her. She is long bodied, deep sided and has a ton of timber under her. The Ms Alice cow family has been exceptionally consistent. Carrying an early February service to Turning Point, you will not want to miss out on this opportunity.

AI bred to Stevenson Turning Point on May 4, 2019 (safe).

Exposed to HLC Grit 310F from May 24 to July 3, 2019.



Stevenson Turning Point - Service Sire





HLC MADONNA 243F



• Female • 2039979 • CHD 243F • 03/01/2018
 • BW: 62 lbs. • ADJ WW: 611 lbs. • ADJ YW: 885 lbs.

EPDS	BW	WW	YW	Milk	TM
-1.0	50	79	22	47	

CONNEALY CAPITALIST 028
 EATHINGTON SUB-ZERO
 KP MISS PROVEN QUEEN 21

SILVEIRAS S SIS GQ 2353
 HLC MADONNA 812D
 SOO LINE MADONNA 9126

S A V FINAL ANSWER 0035
 PRIDES PITA OF CONANGA 8821
 B C MATRIX 4132
 PVF ALL PROVEN QUEEN 503
 SILVEIRAS STYLE 9303
 K N C CABIN CREEK SANDY 804
 HF KODIAK 5R
 JDS MADONNA 2M

HLC BLOSSOM 258F



• Female • 2049336 • CHD 258F • 05/01/2018
 • BW: 88 lbs. • ADJ WW: lbs. • ADJ YW: 910 lbs.

EPDS	BW	WW	YW	Milk	TM
3.7	59	103	25	54	

S A V HARVESTOR 0338
 S A V INTERNATIONAL 2020
 S A V EMBLYNETTE 5483

HF SWAGGER 75W
 HF BLOSSOM 130Y
 REMITALL BLOSSOM 513R

A very complete made daughter of Sub-Zero going back to the great Soo Line Madonna 9126 cow. If you study her pedigree you'll see many breed legends such as Final Answer, Matrix, Style and Kodiak. A royal pedigree with a nice balanced set of numbers. Carrying an early service to Kozi, this female will be a true asset to add to any breeding program.

AI bred April, 8, 2019 to Koupal Kozi 418 (safe).

Exposed to HLC Grit 310F from April 22 to June 6 and then to Brooking Renewal 8100 from June 10 to July 4, 2019.



Long as a freight train with plenty of thickness and eye appeal, 258F will definitely catch your eye on sale day. She is an ET daughter of the great HF Blossom 130Y female and sired by International himself. We have had a limited number of females out of this flush, so don't miss this opportunity to acquire one for yourself.

AI bred to Koupal Kozi 418 on April 21, 2019.

Exposed to HLC Grit 310F from May 10 to June 6 and then to Brooking Renewal 8100 from June 10 to July 4, 2019.

Due early March.



S A V International 2020 - Sire

An ultra complete daughter of Miss Marion 5X, a female that has produced more sale feature bulls than any cow on the farm. 423F is a spitting image of her mother and in my opinion, has the potential to be even better.

AI bred to Sankeys Justified 101 on April 10, 2019.

Exposed to HLC Grit 310F from May 1 to June 6 and then to Brooking Renewal 8100 from June 10 to July 4, 2019.

Due early February.



HLC MISS MARION 423F



• Female • 2090782 • CHD 423F • 01/03/2018
• BW: 80 lbs. • ADJ WW: 564 lbs. • ADJ YW: 864 lbs.

EPDS	BW	WW	YW	Milk	TM
2.3	37	68	26	45	

SITZ UPWARD 307R
BANDURA MR RESPECT 63B
CHAMPION HILL EMBLYNETTE 7726

SPRUCE VIEW RENOVATOR 182U
HLC MISS MARION 5X
DOUBLE D MISS MARION 41R

CONNELY ONWARD
SITZ HENRIETTA PRIDE 81M
S A V MANDAN 5664
CHAMPION HILL EMBLYNETTE 4438
SPRUCE VIEW RENOVATOR 51R
RIVERCREST ANNE 12J
BAR-E-L RAINMAKER 102M
ALLEN CROFT MISS MARION 08 42D

HLC KINOC TRY ANN 313F



• Female • 2090784 • CHD 313F • 23/01/2018
• BW: 85 lbs. • ADJ WW: 539 lbs. • ADJ YW: 866 lbs.

EPDS	BW	WW	YW	Milk	TM
4.9	47	79	19	43	

EXAR ONE-IRON 3889B
MERIT HEAVY METAL 5093
MERIT PRIDE 8822

S A V BULLET 0473
JL KINOC TRY ANN 3058
JL KINOC TRY ANN 0208

DAMERON FIRST CLASS
GREENS PRINCESS 1012
MERIT LUKE 3120
MERIT PRIDE 6088
S A V BISMARCK 5682
S A V EMBLYNETTE 7566
S A V FOUR SEASONS 5231
LLB MISS KINOC TRY ANN 175G

One of three females sired by Heavy Metal on offer. 313F is long spined, correct on her feet and legs, smooth and feminine through her shoulder and neck. Her dam is the never miss type that just clicks no matter how we breed her.

AI bred to Koupal Kozi 418 on April 19, 2019 (safe).

Exposed to HLC Grit 310F from May 10 to June 6 and then to Brooking Renewal 8100 from June 10 to July 4, 2019.





If a little more power is what you are after, here is your female. She's big topped, deep bodied and has plenty of bone and foot under her. Her dam is a cow with an exceptional udder that out does herself each year. Bred early to Turning Point, she will be one to circle in your catalogue.

AI bred to Stevenson Turning Point on May 5, 2019 (safe).
Exposed to HLC Grit 310F from May 24 to July 3, 2019.



Stevenson Turning Point - Service Sire

HLC LASS 386F



- Female • 2040031 • CHD 386F • 11/02/2018
- BW: 97 lbs. • ADJ WW: 669 lbs. • ADJ YW: 904 lbs.

EPDS	BW	WW	YW	Milk	TM
5.0	50	78	21	46	

EXAR ONE-IRON 3889B
 MERIT HEAVY METAL 5093
 MERIT PRIDE 8822

MVF VRD DATELINE 5M
 PARKWOOD HEATHER LASS 92X
 HEATHER LASS OF PARKWOOD 8L

DAMERON FIRST CLASS
 GREENS PRINCESS 1012
 MERIT LUKE 3120
 MERIT PRIDE 6088
 VERMILION DATELINE 7078
 MVF LADY ANNE 30F
 CRESCENT CREEK LEGEND 148G
 PARKWOOD'S HEATHER LASS 154U

HLC MAIDEN 430F



- Female • 2040053 • CHD 430F • 09/03/2018
- BW: 70 lbs. • ADJ WW: 586 lbs. • ADJ YW: 933 lbs.

EPDS	BW	WW	YW	Milk	TM
0.1	39	65	20	40	

EXAR ONE-IRON 3889B
 MERIT HEAVY METAL 5093
 MERIT PRIDE 8822

TVA UPWARD 1Z
 HLC 1Z MAIDEN 458B
 RAVEN RIDGE MAIDEN 2Z

DAMERON FIRST CLASS
 GREENS PRINCESS 1012
 MERIT LUKE 3120
 MERIT PRIDE 6088
 MVF UPWARD 136X
 MVF ROSEBUD 129P
 MVF FOCUS 502S
 RAVEN RIDGE MAIDEN 33T



The Maiden cow family has been a huge asset to us. The 2Z female, purchased from Raven Ridge Angus, has been an outstanding female that weans one of, if not, the heaviest calf each year. She is a picture perfect cow with an incredible udder. 430F is ideal in terms of size and balance, one I see doing some great things in the future.

AI bred to Stevenson Turning Point on May 5, 2019.
Exposed to HLC Grit 310F from May 24 to July 3, 2019
Due early March.

The Miss Marion cow family has been the cornerstone of our program. Their consistency and predictability, has made them one of our largest assets. 340F is no exception; she is the type of female that will just flat out get the job done, as her dam and grand dam have done for us.

AI bred to Koupal Kozi 418 on April 22, 2019 (safe).

Exposed to HLC Grit 310F from May 10 to June 6 and then to Brooking Renewal 8100 from June 10 to July 4, 2019.



HLC MISS MARION 340F



• Female • 2040012 • CHD 340F • 27/01/2018
 • BW: 78 lbs. • ADJ WW: 598 lbs. • ADJ YW: 876 lbs.

EPDS	BW	WW	YW	Milk	TM
	3.0	46	75	17	40

DAMERON FIRST CLASS
 GCC BUSINESS ELITE
 J&J QUEEN 414

BANDURA MR RESPECT 63B
 HLC MISS MARION 747D
 DOUBLE D 91F MISS MARION 19S

EXG RS FIRST RATE S903 R3
 DAMERON NORTHERN MISS 3114
 NORTHERN IMPROVEMENT 4480 GF
 J&J QUEENIE 9206
 SITZ UPWARD 307R
 CHAMPION HILL EMBLYNETTE 7726
 BORDER BUTTE SON OF A GUN 2'02
 ALLENCROFT MISS MARION 03 91F

HLC BLACKBIRD 306F



• Female • 2040001 • CHD 306F • 22/01/2018
 • BW: 69 lbs. • ADJ WW: 599 lbs. • ADJ YW: 932 lbs.

EPDS	BW	WW	YW	Milk	TM
	2.4	50	77	15	40

DAMERON FIRST CLASS
 GCC BUSINESS ELITE
 J&J QUEEN 414

MICH MOB BOSS 1425
 HLC BLACKBIRD 851D
 DOUBLE D 95H BLACKBIRD 67R

EXG RS FIRST RATE S903 R3
 DAMERON NORTHERN MISS 3114
 NORTHERN IMPROVEMENT 4480 GF
 J&J QUEENIE 9206
 EXAR CLASSEN 1422B
 RR ENVIOUS BLACKBIRD 4487
 BAR-E-L RAINMAKER 102M
 KBJ BLACKBIRD 95H

A very attractive daughter of Business Elite, she is sure to catch your eye. She is long bodied, clean fronted and fresh in her make up. If cow families are high on your list, then you'll know the value of the Blackbird line. Be sure to check her out sale day!

AI bred to Musgrave 316 Stunner on April 9, 2019 (safe).

Exposed to HLC Grit 310F from April 22 to June and then to Brooking Renewal 8100 from June 10 to July 4, 2019.



**CHOICE
LOT**



22A

BROOKMORE KARAMA 204X

• Female • 1558193 • JVJ 204X • 12/02/2010
• BW: 70 lbs. • ADJ WW: 592 lbs. • ADJ YW: 834 lbs.

LOT 22A

EPDS	BW	WW	YW	Milk	TM
3.2	44	80	24	46	

- S A V 8180 TRAVELER 004
- S A V 004 DENSITY 4336
- S A V MAY 7238
- PF 7215 AVENGER 0232
- BROOKMORE KARAMA 40M**
- BROOKMORE KARAMA 119F

- SITZ TRAVELER 8180
- BOYD FOREVER LADY 8003
- LEACHMAN RIGHT TIME
- S A R PROSPECTOR MAY 9124
- WK APPEAL
- ALGOMA GOLDEN SUMMER T112
- EARLY SUNSET ROYALTY 13C
- BROOKMORE KARAMA 135D

When Chad and I decided to host this sale I couldn't think of a better feature than this cow and her heifer calf. Karama 204X has been nothing more than outstanding for us since we got her from Jack and Barb Hart, out of the legendary Brookmore herd. She has raised nine calves in eight years and has a life ratio of 104 on both bulls and heifers. We have retained two of her daughters and the rest of her progeny have sold to Iron Saddle Ranch, Tobacco Creek Cattle Co., Earl Upshall, Trevor Smith and Russell Debnam. I love our Density females, which makes it hard to part with this proven producer, that is why we have offered her with her current heifer calf on choice. Bred either Alcatraz or Golden Ticket (full brother to Brooking Gold Coin) I think the coupon inside could be another great one.

AI bred to HF Alcatraz 60F on April 30, 2019.
Exposed to Brooking Golden Ticket 8056 from May 14 to June 1 and J Square S Lute 810F from June 1 to July 10, 2019.



Brookmore 404X and J Square S Karama 922G



HF Alcatraz 60F - Service Sire

THE FEMALE FOCUS PRODUCTION SALE

**CHOICE
LOT**



THE FEMALE FOCUS PRODUCTION SALE

J SQUARE S KARAMA 922G

LOT 22B

- Female • 2111735 • SIES 922G • 15/01/2019
- BW: 94 lbs. • ADJ WW: lbs. • ADJ YW: lbs.

EPDS	BW	WW	YW	Milk	TM
2.5	60	104	24	54	

- CONNEALY BLACK GRANITE
- FF BLACK GOLD JF C19
- JF BARBARAMERE Y3
- S A V 004 DENSITY 4336
- BROOKMORE KARAMA 204X
- BROOKMORE KARAMA 40M

- CONNEALY CONSENSUS 7229
- EURA ELGA OF CONANGA 9109
- CONNEALY RIGHT ANSWER 746
- JF BARBARAMERE W32
- S A V 8180 TRAVELER 004
- S A V MAY 7238
- PF 7215 AVENGER 0232
- BROOKMORE KARAMA 119F

Just like her mother, this heifer is just a pleasure to look at. She is angular, deep bodied and great to work with. This summer she was the pick of many people who had toured our pastures. We have been very pleased with the Black Gold progeny, as you can see with our offering of bred females, as he is the AI service sire to many of our lots. His calves were our biggest sire group and he has done a great job on both the bull calves and the heifer calves. 922G is offered on choice with her dam. I know the decision will be hard picking which one to take.



S A V 004 Density 4336 - Sire of 22A & Grandsire of 22B



FF Black Gold JF C19 - Sire

**CHOICE
LOTS**



J SQUARE S RUTH 838F

LOT 23A

• Female • 2054609 • SIES 838F • 01/02/2018
• BW: 86 lbs. • ADJ WW: 699 lbs. • ADJ YW: lbs.

EPDS	BW	WW	YW	Milk	TM
2.1	64	117	26	58	

MUSGRAVE BIG SKY
MUSGRAVE SKY HIGH 1535
FLAG QUEEN W 00649

SITZ UPWARD 307R
NORTHERN VIEW RUTH 82Z
NORTHERN VIEW RUTH 84S

CONNEALY EARNAN 076E
SAV PRIMROSE 7861
S A V 004 DENSITY 4336
PLATTEMERE QUEEN W 660
CONNEALY ONWARD
SITZ HENRIETTA PRIDE 81M
HYLINE RIGHT WAY 781
CRESCENT CREEK RUTH 6F

J SQUARE S RUTH 936G

LOT 23B

• Female • 2111746 • SIES 936G • 23/01/2019
• BW: 80 lbs. • ADJ WW: lbs. • ADJ YW: lbs.

EPDS	BW	WW	YW	Milk	TM
1.4	59	111	26	56	

MUSGRAVE BIG SKY
MUSGRAVE SKY HIGH 1535
FLAG QUEEN W 00649

SITZ UPWARD 307R
NORTHERN VIEW RUTH 82Z
NORTHERN VIEW RUTH 84S

CONNEALY EARNAN 076E
SAV PRIMROSE 7861
S A V 004 DENSITY 4336
PLATTEMERE QUEEN W 660
CONNEALY ONWARD
SITZ HENRIETTA PRIDE 81M
HYLINE RIGHT WAY 781
CRESCENT CREEK RUTH 6F

When 838F's dam sold in the Power and Perfection Sale a few years back we knew we had to own her. Our good friends down the road at Northern View Angus have had nothing but great results from this cow family and we are seeing the same here. 82Z has been a solid producer for us and also a great donor. We flushed her a couple years ago and had great results. To top it off she bred back her first cycle after. Whether she is bred Alcatraz or Toonie, I think this bred female is going to raise a good one. She sells choice with her full sister.

AI bred to HF Alcatraz 60F on April 10, 2019, Exposed to VNDY TCCO Toonie 801F from April 17 to July 10, 2019. Favorable to AI or first exposure.



23B

Every year this calf's dam brings in a really solid calf in the fall. We have been extremely satisfied thus far with the Sky High progeny and will continue to use the bull in our breeding plans. 936G is a brood cow in the making, deep bodied, nice head and has a great hair coat. Whether you pick her full sister or her, I know that either way the end result will be satisfying.



Northern View Ruth 82Z - Dam of 838F & 936G

This is one of my favorites, not only is she easy on the eyes, she is out of the Echo cow family that has done a great job here. Over the past number of years, I can't remember one year when we didn't have an Echo at the Keystone Classic. 823F is your typical Sky High daughter; deep bodied, angular front end, loads of hair and square made. If there was one heifer I would like to keep back, this might be her. She looks to be dropping a beautiful udder which is something we take really seriously. Her teat placement and size is something to desire. Take a good look here, bred to Black Gold, a bull we have been very happy with.

AI bred to FF Black Gold JF C19 on April 21, 2019.

Exposed to VNDY TCCO Toonie 801F from April 29 to July 10, 2019. Favorable to AI.



24

J SQUARE S ECHO 823F



• Female • 2054597 • SIES 823F • 09/01/2018
• BW: 86 lbs. • ADJ WW: 620 lbs. • ADJ YW: lbs.

EPDS	BW	WW	YW	Milk	TM
	1.4	54	93	22	49

MUSGRAVE BIG SKY
MUSGRAVE SKY HIGH 1535
FLAG QUEEN W 00649

FF STIMULANT Y40
J SQUARE S ECHO 326A
JUSTAMERE 2466 ECHO 516S

CONNEALY EARNAN 076E
SAV PRIMROSE 7861
S A V 004 DENSITY 4336
PLATTEMERE QUEEN W 660
CONNEALY STIMULUS 8419
FF LUCY U25
EXAR MANNA 2466
HFDF ECHO 38N

J SQUARE S GEORGINA 800F



• Female • 2054583 • SIES 800F • 01/01/2018
• BW: 78 lbs. • ADJ WW: 544 lbs. • ADJ YW: lbs.

EPDS	BW	WW	YW	Milk	TM
	2.2	55	97	17	45

MUSGRAVE BIG SKY
MUSGRAVE SKY HIGH 1535
FLAG QUEEN W 00649

PLEASANT VALLEY LUTE 1207
WILBAR GEORGINA 743C
WILBAR GEORGINA 17P

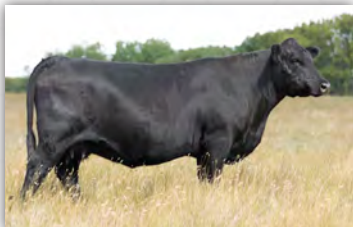
CONNEALY EARNAN 076E
SAV PRIMROSE 7861
S A V 004 DENSITY 4336
PLATTEMERE QUEEN W 660
PLAINVIEW LUTTON E102
CHERRY KNOLL ELSA 8014
SANDY BAR ADVANTAGE 43M
WILBAR GEORGINA 706M

This is a really good bred heifer out of a feature female that we purchased out of the Power and Perfection in 2018 from Wilbar Cattle Co. Wilbar Georgina 743C stems back to the same cow family responsible for the popular Wilbar Tigershark. Her sire, Musgrave Sky High 1535 has done a really nice job here and we are really excited to see his daughters in production. 800F is moderate in frame, deep bodied and very angular. She is setting up a beautiful udder just like her dam. Bred to the Bank Note son Toonie, will be very exciting. Remember that the resulting calf is eligible for the Rose Bowl 2020.

AI bred to HF Alcatraz 60F on April 20, 2019.

Exposed to VNDY TCCO Toonie 801F from April 29 to July 10, 2019.

Observed bred to VNDY TCCO Toonie 801F on May 10, 2019.



Wilbar Georgina 743C - Dam of 800F



25



26

J Square S Enchantress 518C - Dam of 741E

This heifer is royally bred. Stimulant, Justified, Density and from the great Enchantress cow family, this is one of my favorites. Her dam is a Justified cow and we are really happy his daughters. Her dam would be a maternal sister to the great Fireman bull that walked the pastures of Hamilton Farms. She is sweet fronted, deep and carrying that extra age as a fall born baby. This heifer got away on us during our first spring sort and as a result left her with the Natural Law bull, any DNA on the resulting calf will be covered by us. Either Black Gold or Law Breaker, her first calf could be very exciting.

AI bred to FF Black Gold JF C19 on April 2, 2019.
Exposed to Brooking Law Breaker 8139 from April 12 to April 24, then to Brooking Golden Ticket 8056 from May 1 to June 1 and then to VNDY TCCO Toonie 801F from June 1 to July 10, 2019. Favorable to AI or first exposure.

J SQUARE S ENCHANTRESS 741E

LOT 26

• Female • 2002683 • SIES 741E • 04/09/2017
• BW: 82 lbs. • ADJ WW: lbs. • ADJ YW: lbs.

EPDS	BW	WW	YW	Milk	TM
3.2	53	89	24	51	

CONNEALY STIMULUS 8419
FF STIMULANT Y40
FF LUCY U25

SANKEYS JUSTIFIED 101
J SQUARE S ENCHANTRESS 518C
BROOKMORE ENCHANTRESS 229S

H A POWER ALLIANCE 1025
BLACK CREESA OF CONANGA 5332
TC GRID TOPPER 355
FF CANDACE P1
SANKEYS LAZER 609 OF 6N
SANKEYS ERICA 525
S A V 004 DENSITY 4336
BROOKMORE ENCHANTRESS 17N

J SQUARE S BLACKCAP 739E

LOT 27

• Female • 2002681 • SIES 739E • 08/08/2017
• BW: 78 lbs. • ADJ WW: lbs. • ADJ YW: lbs.

EPDS	BW	WW	YW	Milk	TM
0.8	38	65	26	45	

CONNEALY STIMULUS 8419
FF STIMULANT Y40
FF LUCY U25

SOO LINE MOTIVE 9016
J SQUARE S BLACKCAP 500C
NORTHERN VIEW BLACKCAP 30N

H A POWER ALLIANCE 1025
BLACK CREESA OF CONANGA 5332
TC GRID TOPPER 355
FF CANDACE P1
HF KODIAK 5R
TLA BEAUTY 5R
N V GOLDEN ELIXIR 73L
CALLAMERE BLACKCAP 10G



27

739E is another fall born heifer with a bit of extra age that I really like. She is moderate, tanky and dropping a great udder. Her grand dam was one of those cows who never missed. She had two daughters sell through the Masterpiece Sale at Agribition. The Motive x Stimulant mating has been working really well, bred to the Bank Note son, Toonie, this could be really good. Don't forget the calf is eligible for the Rose Bowl 2020.

AI bred to FF Black Gold JF C19 on April 12, 2019
Exposed to VNDY TCCO Toonie 801F from April 17 to July 10, 2019. Favorable to VNDY TCCO Toonie 801F for a mid-February calf.

This bred female is long, deep and very attractive through her front end. Likely one of my favorite Stimulant daughters. She stems from the famous Tibbie cow family from MVF. A maternal sister sold to AT Angus at the Keystone Classic and has been doing a great job for that partnership.

AI bred to FF Black Gold JF C19 on April 22, 2019. Exposed to VNDY TCCO Toonie 801F from April 29 to July 10, 2019. Favorable to AI.



28



J Square S Tibbie 16Y - Dam of 835F

J SQUARE S TIBBIE 835F

LOT 28

• Female • 2054607 • SIES 835F • 26/01/2018
• BW: 98 lbs. • ADJ WW: 607 lbs. • ADJ YW: lbs.

EPDS	BW	WW	YW	Milk	TM
3.1	48	81	28	52	

CONNEALY STIMULUS 8419
FF STIMULANT Y40
FF LUCY U25

HF TIGER 5T
J SQUARE S TIBBIE 16Y
MVF TIBBIE 969T

H A POWER ALLIANCE 1025
BLACK CREESA OF CONANGA 5332
TC GRID TOPPER 355
FF CANDACE P1
HF KODIAK 5R
HF ECHO 84R
KMK ALLIANCE 6595 187
MVF TIBBIE 176G

J SQUARE S BLACKCAP 874F

LOT 29

• Female • Unregistered • SIES 874F • 20/01/2018
• BW: lbs. • ADJ WW: lbs. • ADJ YW: lbs.

EPDS	BW	WW	YW	Milk	TM
-	-	-	-	-	-

CONNEALY STIMULUS 8419
FF STIMULANT Y40
FF LUCY U25

JSQUARE S JAG 309A
J SQUARE S BLACKCAP 90D
J SQUARE S BLACKCAP 94Z

H A POWER ALLIANCE 1025
BLACK CREESA OF CONANGA 5332
TC GRID TOPPER 355
FF CANDACE P1
HF TIGER 5T
MVF LADY ANN 934S
SIMMENTAL BULL
J SQUARE S BLACKCAP 83X

This heifer is good!!! A beautiful daughter of FF Stimulant Y40 whose daughters have really shone here. This may be the only heifer selling without papers but I think she will be a great cow for her new owner. Don't overlook this one.

AI bred to KCF Bennett Total on April 6, 2019

Exposed to VNDY TCCO Toonie 801F from April 17 to July 10, 2019. Favorable to AI.



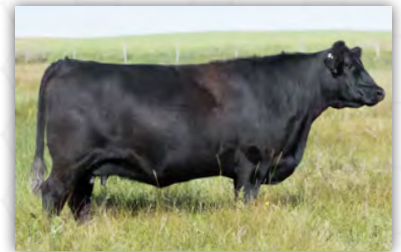
29



872F is probably the most powerful female in our offering. She is a frame score bigger but yet deep middled and setting a very nice udder. This heifer is out of one of my favorite cows. Her dam would be a maternal sister to Lot 34. The EXAR Classen bull is something new to our program and we have been very happy with him. With breed legends like First Class, Lutton, MJ Escalade and S A V Density, this might be one our most exciting females in the sale, to top it off being bred to Alcatraz might be the icing on the cake.

AI bred to HF Alcatraz 60F on April 17, 2019.

Exposed to VNDY TCCO Toonie 801F from April 29 to July 10 2019. Favorable to AI



82C- Maternal sister to 872F

J SQUARE S GEORGINA 872F

J SQUARE S TIBBIE 805F

LOT 30

• Female • 2054599 • SIES 872F • 10/01/2018
• BW: 98 lbs. • ADJ WW: 640 lbs. • ADJ YW: lbs.

EPDS	BW	WW	YW	Milk	TM
6.0	60	100	21	51	

DAMERON FIRST CLASS
EXAR CLASSEN 1422B
EXAR PRINCESS 2006

MJ ESCALADE 2W
J SQUARE S GEORGINA 90Z
GREENBUSH GEORGINA 18U

EXG RS FIRST RATE S903 R3
DAMERON NORTHERN MISS 3114
EXAR LUTTON 1831
GREENS PRINCESS 1012
REMITALL H RACHIS 21R
REMITALL ANNIE 543T
S A V 004 DENSITY 4336
GREENBUSH GEORGINA 34P

LOT 31

• Female • 2054586 • SIES 805F • 04/01/2018
• BW: 94 lbs. • ADJ WW: 617 lbs. • ADJ YW: lbs.

EPDS	BW	WW	YW	Milk	TM
3.6	60	115	24	54	

A A R TEN X 7008 S A
EXAR RESISTOL 3710B
SITZ HENRIETTA PRIDE 643T

S A V 004 DENSITY 4336
J SQUARE S TIBBIE 13Z
MVF TIBBIE 60S

MYTTY IN FOCUS
A A R LADY KELTON 5551
CONNEALY ONWARD
SITZ HENRIETTA PRIDE 81M
S A V 8180 TRAVELER 004
S A V MAY 7238
G A R RETAIL PRODUCT
MVF TIBBIE 003N



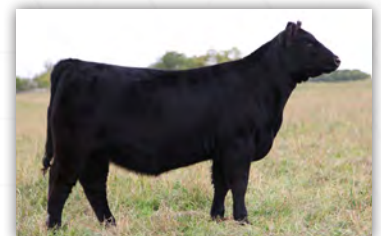
This is a really long bodied, attractive fronted daughter of EXAR Resistol. Her dam is an Elite cow and a daughter of Density, who is one of our favorite female makers. She is one of the best uddered cows that never misses. 13Z's first calf sold to Young Dale Angus in the Power and Perfection at Agribition and sons are working for Brett Schlamp, Perry Powell and Irwin Madison. We are very excited for the Alcatraz calves this winter and the fact that this elite heifer is carrying his service makes it so much better.

AI bred to HF Alcatraz 60F on April 10, 2019.

Exposed to VNDY TCCO Toonie 801F from April 29 to July 10 2019. Favorable to AI.



J Square S Tibbie 13Z - Dam of 805F



JS 419B - Maternal sister, sold to Young Dale Angus

J SQUARE S BLACKCAP 807F

LOT 32

• Female • 2054587 • SIES 807F • 04/01/2018
• BW: 80 lbs. • ADJ WW: 547 lbs. • ADJ YW: lbs.

EPDS	BW	WW	YW	Milk	TM
0.7	35	72	24	42	

A A R TEN X 7008 S A
EXAR RESISTOL 3710B
SITZ HENRIETTA PRIDE 643T

NORTHERN VIEW QUANTUM 86P
NORTHERN VIEW BLACKCAP 3U
NORTHERN VIEW BLACKCAP 30N

MYTTY IN FOCUS
A A R LADY KELTON 5551
CONNEALY ONWARD
SITZ HENRIETTA PRIDE 81M
GDAR QUANTUM 963
CRESCENT CREEK BLACKBIRD 21J
N V GOLDEN ELIXIR 73L
CALLAMERE BLACKCAP 10G

A solid bred female out of a solid cow. She is from the same cow family as Lot 27. Maternal sisters have sold to Cranberry Creek Angus and Randy Tooth. Maternal brothers have sold to Brookmore Angus, Starvin Dog Ranch and Trevor Smith. She is favorable to our calving ease AI sire, Black Gold, who has done a great job here.

AI bred to FF Black Gold JF C19 on April 20, 2019.

Exposed to VNDY TCCO Toonie 801F from April 29 to July 10, 2019.

Favorable to AI.



32

J SQUARE S MAIDEN 839F

LOT 33

• Female • 2065721 • SIES 839F • 01/02/2018
• BW: 75 lbs. • ADJ WW: 552 lbs. • ADJ YW: lbs.

EPDS	BW	WW	YW	Milk	TM
0.6	39	76	22	42	

A A R TEN X 7008 S A
EXAR RESISTOL 3710B
SITZ HENRIETTA PRIDE 643T

MJ ESCALADE 2W
J SQUARE S MAIDEN 319A
BROOKMORE MAIDEN 55U

MYTTY IN FOCUS
A A R LADY KELTON 5551
CONNEALY ONWARD
SITZ HENRIETTA PRIDE 81M
REMITALL H RACHIS 21R
REMITALL ANNIE 543T
S A V 004 DENSITY 4336
BROOKMORE MAIDEN 88P

A very similarly bred female to our next lot. Resistol, Density and our old herd sire, MJ Escalade 2W. Bred to the Bank Note son Toonie. Her calf qualifies for the Rose Bowl that will be put on by Bohrsen Marketing in 2020.

Exposed to VNDY TCCO Toonie 801F from April 22 to July 10, 2019.

Pregnancy check favors early February calving date.



33

J SQUARE S GEORGINA 876F

LOT 34

• Female • 2054602 • SIES 876F • 14/01/2018
• BW: 92 lbs. • ADJ WW: 570 lbs. • ADJ YW: lbs.

EPDS	BW	WW	YW	Milk	TM
3.7	49	89	20	45	

A A R TEN X 7008 S A
EXAR RESISTOL 3710B
SITZ HENRIETTA PRIDE 643T

S A V 004 DENSITY 4336
GREENBUSH GEORGINA 18U
GREENBUSH GEORGINA 34P

MYTTY IN FOCUS
A A R LADY KELTON 5551
CONNEALY ONWARD
SITZ HENRIETTA PRIDE 81M
S A V 8180 TRAVELER 004
S A V MAY 7238
PF 7215 AVENGER 0232
GREENBUSH GEORGINA 37F

Density is one of our favorite female making bulls, as you have seen in our offering. Add Ten X and Henrietta Pride 643T and you have a royally bred female. She is a maternal sister to the dam of Lot 31. I really like her mating to Black Gold.

AI bred to FF Black Gold JF C19 on April 10, 2019. Exposed to VNDY TCCO Toonie 801F from April 17 to July 10, 2019. Favorable to AI.



34

J SQUARE S ELLEN 801F

LOT 35

• Female • 2054582 • SIES 801F • 01/01/2018
• BW: 72 lbs. • ADJ WW: 611 lbs. • ADJ YW: lbs.

EPDS	BW	WW	YW	Milk	TM
	0.9	47	79	26	50

BAR S RANGE BOSS 4002
MERIT SKY FIRE 6010D
MERIT SOCIALITE 4154

SOO LINE MOTIVE 9016
J SQUARE S ELLEN 543C
J SQUARE S ELLEN 335A

BAR S RANGE BOSS 1118
BAR S PRIDE 0073
MERIT VISION 2047
MERIT SOCIALITE 1223
HF KODIAK 5R
TLA BEAUTY 5R
TC FREEDOM 104
MVF ELLEN 26N

The Ellen cow family is slowly growing here at J Square S and proving themselves very worthy. These Ellen females are very fertile. Her grand dam, J Square S Ellen 335A is the result of a pack of embryos purchased from the historical MVF sale. 335A entered the donor pen this spring giving us 25 freezable embryos. Two daughters of 335A have sold through the Power and Perfection Sale at Agribition to Belvin Angus and Nolan Glover.

AI bred to FF Black Gold JF C19 on April 17, 2019.
Exposed to VNDY TCCO Toonie 801F from April 29 to July 10, 2019.
Favorable to AI.

J SQUARE S KARAMA 828F

LOT 36

• Female • 2054603 • SIES 828F • 18/01/2018
• BW: 80 lbs. • ADJ WW: 587 lbs. • ADJ YW: lbs.

EPDS	BW	WW	YW	Milk	TM
	1.9	49	89	26	51

BAR S RANGE BOSS 4002
MERIT SKY FIRE 6010D
MERIT SOCIALITE 4154

HF TIGER 5T
J SQUARE S KARAMA 602D
BROOKMORE KARAMA 204X

BAR S RANGE BOSS 1118
BAR S PRIDE 0073
MERIT VISION 2047
MERIT SOCIALITE 1223
HF KODIAK 5R
HF ECHO 84R
S A V 004 DENSITY 4336
BROOKMORE KARAMA 40M

This Range Boss granddaughter is from the same cow family as our feature choice Lot 22. We love our Tiger daughter here at J Square S. Bred to the Toonie bull, who is a son of the famous Bank Note which make the resulting calf qualified for the Rose Bowl that will be held in the fall of 2020.

Exposed to VNDY TCCO Toonie 801F from April 17 to July 10, 2019.
Observed bred on April 19, 2019.

J SQUARE S TIBBIE 830F

LOT 37

• Female • 2054616 • SIES 830F • 21/03/2018
• BW: 90 lbs. • ADJ WW: 845 lbs. • ADJ YW: lbs.

EPDS	BW	WW	YW	Milk	TM
	3.7	60	108	23	53

BAR S RANGE BOSS 4002
MERIT SKY FIRE 6010D
MERIT SOCIALITE 4154

S A V RESOURCE 1441
J SQUARE S TIBBIE 612D
MVF TIBBIE 616S

BAR S RANGE BOSS 1118
BAR S PRIDE 0073
MERIT VISION 2047
MERIT SOCIALITE 1223
RITO 707 OF IDEAL 3407 7075
S A V BLACKCAP MAY 4136
NICHOLS EXTRA H6
MVHF TIBBIE 39B

Merit Sky Fire 6010 is a Range Boss son and has done an exceptional job here. I feel that his daughters are going to be very good producers in the future. 830F goes back to MVF Tibbie 616S, that we purchased from MVF who was an Elite dam. The Tibbie cow family might be one of the most famous cow families in Canada, mated with the Blackcap May 4136 on the bottom side, this could be exciting.

AI bred to FF Black Gold JF C19 on April 11, 2019.
Exposed to VNDY TCCO Toonie 801F from April 29 to July 10, 2019.
Favorable to AI.



35



Maternal sister, sold to Nolan Glover JS 506C - Maternal sister, sold to Belvin Angus



36



37

831F is probably my favorite Sky Fire daughter in the sale because I really like her dam. Her dam brought home one of the best Black Gold calves this fall. She is sound, deep and very attractive. Looks to be dropping a very good udder which is to be expected with Jag on the bottom side of her pedigree. A maternal sister to her dam sold to Eton Six Angus, Snowflake, MB.

AI bred to FF Black Gold JF C19 on April 2, 2019.

Exposed to VNDY TCCO Toonie 801F from April 17 to July 10, 2019. Favorable to AI or first exposure.



J SQUARE S LASS 831F



- Female • 2054604 • SIES 831F • 22/01/2018
- BW: 80 lbs. • ADJ WW: 642 lbs. • ADJ YW: lbs.

EPDS	BW	WW	YW	Milk	TM
0.8	50	83	28	53	

BAR S RANGE BOSS 4002
 MERIT SKY FIRE 6010D
 MERIT SOCIALITE 4154

J SQUARE S JAG 309A
 J SQUARE S LASS 609D
 MERIT LASS 165X

BAR S RANGE BOSS 1118
 BAR S PRIDE 0073
 MERIT VISION 2047
 MERIT SOCIALITE 1223
 HF TIGER 5T
 MVF LADY ANN 934S
 MERIT MATADOR 4190
 MERIT LASS 9027

J SQUARE S MAIDEN 833F



- Female • 2054605 • SIES 833F • 26/01/2018
- BW: 76 lbs. • ADJ WW: 667 lbs. • ADJ YW: lbs.

EPDS	BW	WW	YW	Milk	TM
1.5	52	87	27	53	

BAR S RANGE BOSS 4002
 MERIT SKY FIRE 6010D
 MERIT SOCIALITE 4154

FF STIMULANT Y40
 J SQUARE S MAIDEN 635D
 J SQUARE S MAIDEN 319A

BAR S RANGE BOSS 1118
 BAR S PRIDE 0073
 MERIT VISION 2047
 MERIT SOCIALITE 1223
 CONNEALY STIMULUS 8419
 FF LUCY U25
 MJ ESCALADE 2W
 BROOKMORE MAIDEN 55U

833F is the result of some of my favorite bulls here, FF Stimulant, MJ Escalade and of course S A V Density. Carrying a later exposure to the Toonie bull, who we feel will do a great job here. Her calf will be eligible for the Rose Bowl in 2020.

AI bred to FF Black Gold JF C19 on April 22, 2019.

Exposed to VNDY TCCO Toonie 801F from April 29 to July 10, 2019. Pregnancy check favors an early March calf.



39



Fireman - Maternal Brother

HLC 1220 Slow Ride 266A - Sire of 742E

J SQUARE S ENCHANTRESS 742E



• Female • 2002684 • SIES 742E • 10/09/2018
 • BW: 92 lbs. • ADJ WW: lbs. • ADJ YW: lbs.

EPDS	BW	WW	YW	Milk	TM
	5.6	42	76	16	37

JL WARDEN 1220
 HLC 1220 SLOW RIDE 266A
 HLC MISS MARION 5X

S A V 004 DENSITY 4336
 BROOKMORE ENCHANTRESS 229S
 BROOKMORE ENCHANTRESS 17N

SITZ UPWARD 307R
 JL FLORESSA 8214
 SPRUCE VIEW RENOVATOR 182U
 DOUBLE D MISS MARION 41R

S A V 8180 TRAVELER 004
 S A V MAY 7238
 PF 7215 AVENGER 0232
 BROOKMORE ENCHANTRESS 190H

An own daughter of 299S. Her mother has written us a really good story here with one of her highlights being J Squares Fireman who sold at Agribition to Hamilton Farms. After being flushed for a few years she is now back in production. Some of our best cows are direct daughters out of her from those flushes. 742E is a fall born calf with a little extra age on her. The Slow Ride daughters walking the pastures are really proving themselves as big time producers and I would expect anything different from 742. I am really confident in what this female can do.

AI bred to FF Black Gold JF C19 on April 14, 2019.
Exposed to VNDY TCCO Toonie 801F from April 17 to July 10, 2019.
Favorable to AI.

J SQUARE S PRIDE 817F



• Female • 2054593 • SIES 817F • 07/01/2018
 • BW: 78 lbs. • ADJ WW: 660 lbs. • ADJ YW: lbs.

EPDS	BW	WW	YW	Milk	TM
	-0.6	57	95	28	57

HF TIGER 5T
 J SQUARE S JAG 309A
 MVF LADY ANN 934S

BASIN EXCITEMENT
 HILOW PRIDE 35C
 HILOW PRIDE 21U

HF KODIAK 5R
 HF ECHO 84R
 G A R GRID MAKER
 BOTANY ANGUS LADY ANN 17J
 BASIN EXPEDITION R156
 BASIN LADY S532 AK
 BLACK RIDGE EDITION 2S
 HILOW PRIDE 3G

Jag is leaving a great set of daughters at our place as well as at Double C Red Angus in Foam Lake. They are tidy uddered and wean some of the biggest calves. 817's dam came to us from Hi Low Angus in the Harvest Classic Sale after we had seen her on the Saskatchewan Angus Tour that summer. Her mating to Black Gold could pay for her in the first go.

AI bred to FF Black Gold JF C19 on April 8, 2019.
Exposed to VNDY TCCO Toonie 801F from April 17 to July 10, 2019.
Favorable to AI.

J SQUARE S BLACKCAP 879F



• Female • Applied For • SIES 879F • 26/01/2018
 • BW: lbs. • ADJ WW: lbs. • ADJ YW: lbs.

(PE) EPDS	BW	WW	YW	Milk	TM
	1.7	58	103	28	57

HF TIGER 5T
 J SQUARE S JAG 309A
 MVF LADY ANN 934S

R B ACTIVE DUTY 0010X
 J SQUARE S BLACKCAP 79C
 J SQUARE S BLACKCAP 83X

HF KODIAK 5R
 HF ECHO 84R
 G A R GRID MAKER
 BOTANY ANGUS LADY ANN 17J
 LCC NEW STANDARD
 B A LADY 6807 305
 MVF FRONTIER 220S
 NORTHERN VIEW BLACKCAP 9T

A real attractive Jag daughter out of a cow family that has been bringing in some of the biggest calves at weaning. A maternal brother sold to Ben Switzer, Hazenmore, SK.
AI bred to KCF Bennett Total on April 2, 2019.
Exposed to VNDY TCCO Toonie 801F from April 17 to July 10, 2019.
Favorable to AI or first exposure.



J Square S Jag 309A - Sire to 817F & 879F



If you're looking for a really cool show heifer... look no further than Fantasia! Her dam, Limestone Rita U265 was shown as one of Jenna's 4-H projects. Many of you who know the Hollinger program, know of HLC 101 Cross Fire 569C. He is a bull we purchased out of the 2016 Hollinger Bull Sale and he has had a significant impact on our herd. Cross Fire was Senior Champion and Reserve Grand Champion Bull at the 2017 Royal Agricultural Winter Fair. Fantasia has show career written all over her pedigree. She expresses style and rib shape of her momma and possesses the performance of Cross Fire. Stop by our stall at Agribition and check her out!



HLC 101 Cross Fire 569C - Sire



MAINSTREAM FANTASIA 16G



• Female • 2115885 • MSG 16G • 16/02/2019
 • BW: 80 lbs. • ADJ WW: lbs. • ADJ YW: lbs.

EPDS	BW	WW	YW	Milk	TM
	4.3	42	77	19	40

SANKEYS JUSTIFIED 101
 HLC 101 CROSS FIRE 569C
 JL CHARISE 3159

G D A R TRAVELER 044
 LIMESTONE RITA U265
 G A R PRECISION 2089

SANKEYS LAZER 609 OF 6N
 SANKEYS ERICA 525
 S A V HARVESTOR 0338
 JUSTAMERE 0405 CHARISE 361N
 D H D TRAVELER 6807
 G D A R BLACKCAP LADY 840
 G A R PRECISION 1680
 G A R EXT 704

TERM & CONDITIONS

TERMS:

The terms of the sale are cash or cheque, payable at par at the sale location. The right of property shall not pass until after settlement has been made; no invoicing on buyers in attendance unless previous arrangements have been made. Every animal sells to the highest bidder and in cases of disputes, the auctioneer's decision will be final. Announcements from the auction block will take precedence over the printed matter in the catalogue. Current exchange rates will be announced sale day. All monies are in Canadian funds.

CERTIFICATE OF REGISTRATION:

Each animal will carry papers issued by the Canadian Angus Association unless otherwise stated. A certificate of registry duly transferred will be furnished to the buyer for each animal after payment has been made.

HEALTH:

All animals in the sale have met all necessary health requirements.

GUARANTEE:

Each animal becomes the purchaser's risk immediately after the animal is sold. All animals in this sale will be sold under the terms and guarantees set forth by the Canadian Angus Association with regard to health, freedom from defects and from both reproductive and specific genetic unsoundness.

PREGNANCY INFORMATION:

All serviceable age females have been pregnancy examined by an accredited veterinarian, giving an estimated length of gestation. This estimated gestation period shall be used only as a guideline to calving and is not a guarantee of actual service.

LIABILITIES:

All persons attend the sale at their own risk. The seller, facility owner and sale manager assume no liability legal or otherwise, for any accidents that occur. It is understood that T Bar C Cattle Co. (2013) Ltd. is acting only as a medium between buyer and seller and is not responsible for any failure on the part of either party to live up to his obligations. Neither does T Bar C Cattle Co. (2013) Ltd. assume any financial obligations to collect or enforce collection of any monies between parties and any legal action that may in exceptional cases be taken must be between the buyer and the seller. T Bar C Cattle Co. (2013) Ltd. assumes no responsibility for any credit extended by the seller to the buyer. The buyer must look to the seller for fulfillment of all guarantees and representations made hereunder.

DELIVERY:

Every assistance will be given in getting your purchases home. Each animal becomes the risk of the purchaser as soon as sold.

PHONE, MAIL, WIRE BIDS:

Bidders unable to attend the sale may phone, wire or mail their bids and instructions to the sale manager, auctioneer or special representatives. Bids must be received in sufficient time prior to the sale.

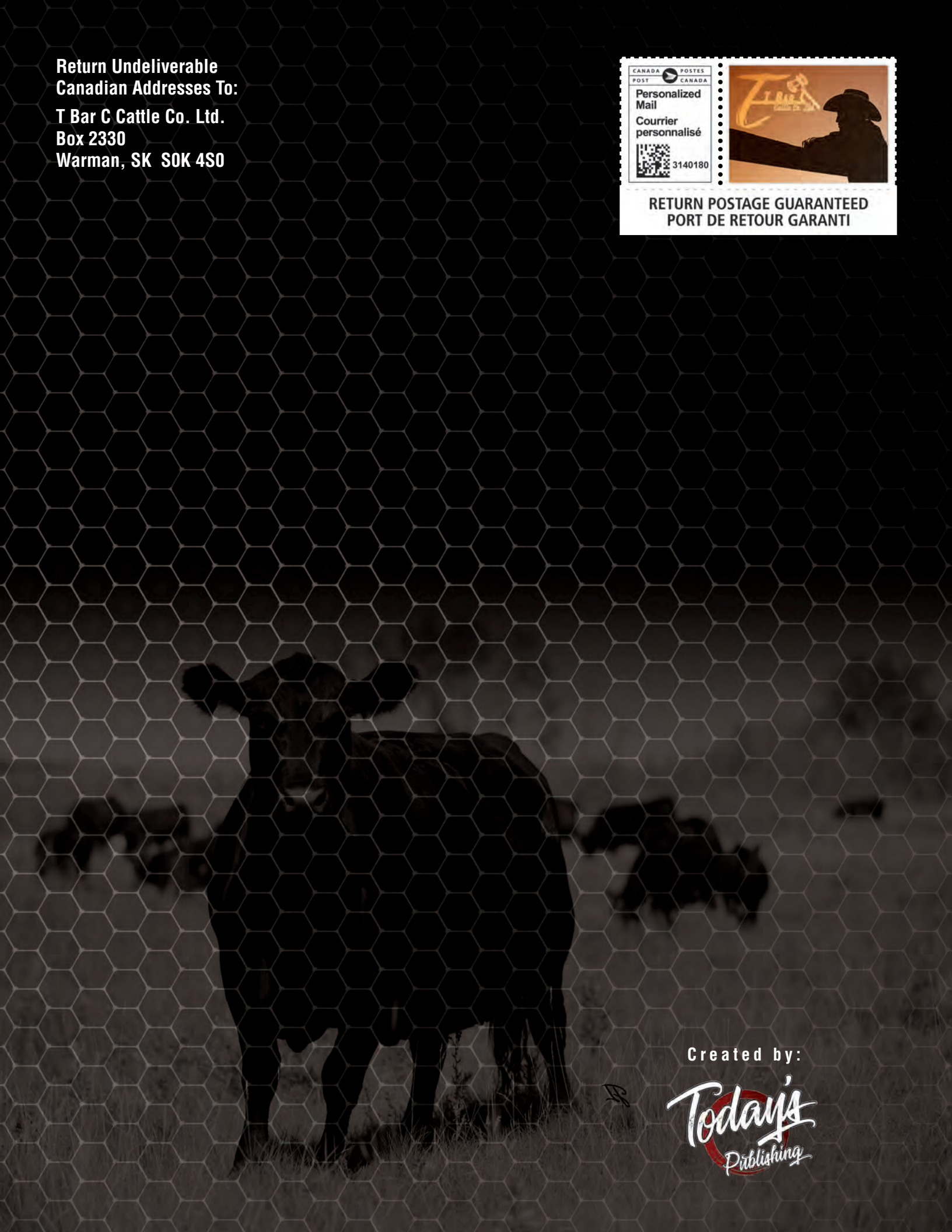
INSURANCE:

We strongly recommend that insurance is purchased for full value.

ERRORS:

All announcements at sale time, written or oral, supersede any written material in the catalogue.

Return Undeliverable
Canadian Addresses To:
T Bar C Cattle Co. Ltd.
Box 2330
Warman, SK S0K 4S0



Created by:

