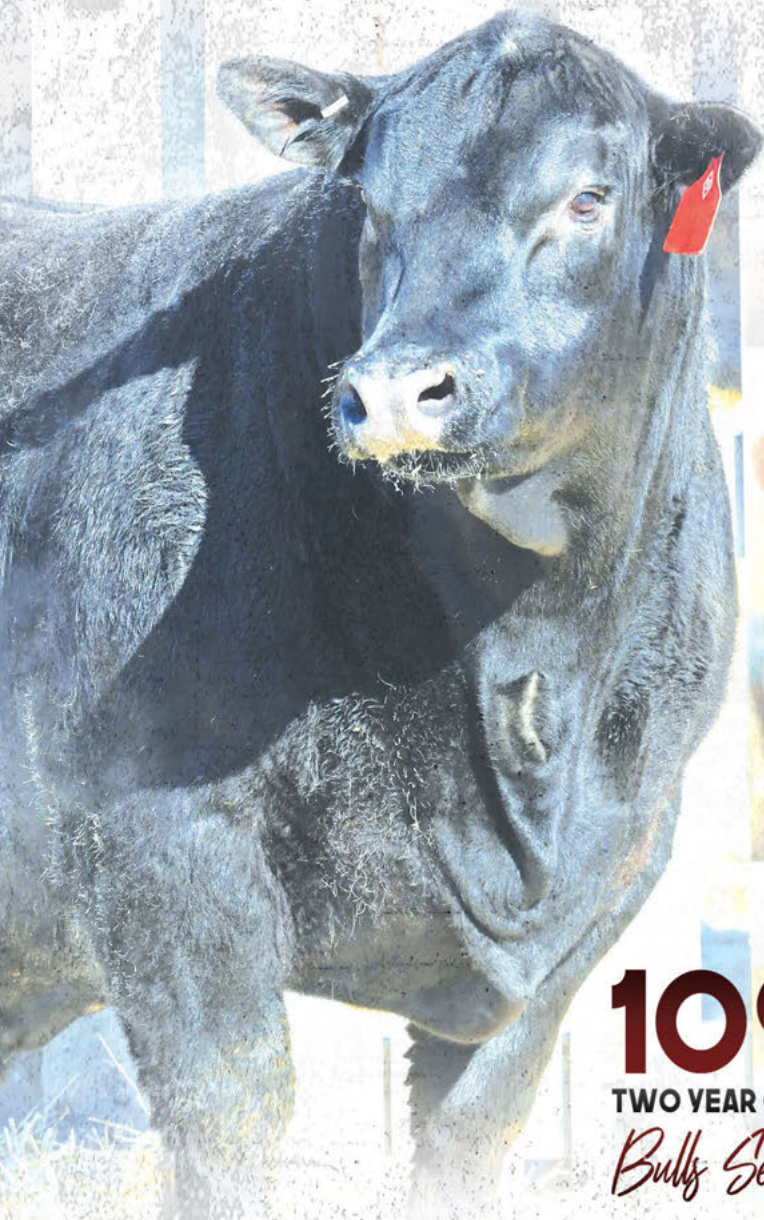


BLAIRS.AG CATTLE CO.

THE **PURSUIT** of
EXCELLENCE

Bull Sale 2020

TUESDAY, FEBRUARY 4, 2020 • 1:00 PM
Jackson Cattle Co. Sale Facility
Sedley, Saskatchewan



109
TWO YEAR OLD
Bulls Sell!

 **Blairs.Ag**
cattle company

THE PURSUIT of EXCELLENCE

Bull Sale 2020

Tuesday, February 4, 2020

1:00 PM

Jackson Cattle Co. Sale Facility
Sedley, Saskatchewan



Welcome...



Well...I think when it comes to 2019, most of us can safely say, "What the hell was that?" A lot has changed with regards to our bull sale. After listening to many of you, we decided to move our sale from April to February and we appreciate all the positive comments we have received. It's a lot of change, but we are very excited to see all our existing customers and some new ones on Tuesday, February 4. We have increased the number of bulls to 109 bulls and there are many large sire groups and full siblings for you to choose from. Because we are early in the sale selling season and bulls don't typically go to grass until May/June and to prevent the need for semen testing the bulls twice, we will sell the bulls as guaranteed breeders and the semen test will happen closer to spring. All bulls have received a physical examination and scrotal evaluation prior to the sale and will be semen tested prior to delivery. We will keep the bulls free of charge until April 1, but you are, of course, welcome to take your bulls home right after the sale and we will make arrangements for semen testing at a later date. If you have any questions about the bulls or the new sale format, please give us a call.

Kevin Blair

SALE DAY PHONES

SALE BARN 306.885.4418	LEVI JACKSON 306.537.9251
KEVIN BLAIR 306.365.7922	CHANCE JACKSON 306.537.4690
BLAKE MACMILLAN 306.528.7484	JORDIE BUBA 780.818.4047
KENT MCCUNE 817.602.8629	LUKE LEWIS 403.771.3293
CHAD HAALAND 306.544.7770	RHETT JONES 306.629.7878
CRAIG BLAIR 306.699.7607	



SALE STAFF

AUCTIONEER Chris Poley	306.220.5006
RINGSIDE Nate Marin	306.869.7130
Shane Michelson	403.363.9973
Ben Wright	519.374.3335

SALE MANAGEMENT

T Bar C Cattle Co. Ltd
Box 2330
Warman, Saskatchewan S0K 4S0
306.933.4200 Fax: 306.934.0744
info@tbarc.com www.tbarc.com



SALE MARKETING AGENTS

Bohrson Marketing Scott Bohrson	403.370.3010
Martin Bohrson	306.220.7901
Geoff Anderson	306.731.7921
Rob Voice	306.270.6082
Matt Criddle	306.539.6934



CALVING EASE LEGEND

Calving Ease is often related to birth weight of a bull. This is partly true but there are other factors that influence calving ease. The dam and her management are at least 50% of calving ease. Also, the consistency of the birth weights of the sire and dam should be considered. Nutrition, gestation and environment all influence birth weight. We have rated each bull in the sale based on the information we have.

- Should produce minimal problems when bred to medium to large frame heifers.
- Recommend for larger frame heifers, second calvers or small framed cows.
- Recommend for mature cows 1400 pounds plus.

SALE DAY CONSULTANTS

Jim (Shiney) Hallberg	306.861.0917
Roger Peters	403.828.9815
Mark Holowaychuk	403.896.4990

From the desk at T Bar...



Chris Poley
306-220-5006



Shane Michelson
403-363-9973



Ben Wright
519-374-3335



T BAR C CATTLE CO. LTD.
Box 2330
Warman, SK S0K 4S0
306.933.4200 Fax: 306.934.0744
info@tbarc.com www.tbarc.com

Welcome to the Annual Blairs.Ag Cattle Company "Pursuit of Excellence" Bull Sale at the Jackson Cattle Co. sale facility, Sedley, Saskatchewan. Due to customer demand, the sale date has moved to February 4, 2020.

With change comes excitement! The 2020 offering is the biggest and best lineup of two-year-old bulls during the spring sale season. Selected from one of Canada's leading seedstock operations, the bulls are packed with new genetic power. As you will find in the following pages, Blairs.Ag use an extensive embryo transfer program using their finest and most predictable donor cows, then mated to new outcross sires with a high degree of success. Whether you are a seedstock producer looking for your next herd sire or a commercial producer looking for new genetics that are highly maternal, look no further. At Blairs.Ag motherhood is highly regarded in the family and the cow herd.

These bulls were slated for this sale... the top cut, selected from a large cowherd base. They are grass run all summer in large pastures ensuring soundness, then supplemented in the fall with a high roughage ration until sale time. Rugged and designed to increase pounds at weaning, this lineup is worth the trip whether you are looking for Red, Black or Simm/Angus!

The Blairs.Ag customer service is second to none... "they want your cows bred with a high-quality sire." This customer service is exemplified by the many repeat customers... the true test of any purebred breeder.

Feel free to stop by the sale facility any time prior the sale and go through the bulls. Don't hesitate to give Kevin or their knowledgeable staff a call to discuss your breeding requirements and bulls that will fit your program and budget.

If we may be of assistance, prior to or sale day, feel free to contact any of the T Bar Team or myself, as we will help you in a professional manner.

Chris Poley

SALE DAY LOCATION

JACKSON CATTLE CO. SALE FACILITY
Box 159 Sedley, Sask S0G 4K0 Phone: 306.537.9251
From Sedley: Go 4 miles north on 620, then 1/2 mile west and 1/2 mile back north.

SIGHT UNSEEN PURCHASE

If you are unable to make the sale, we will help you with your selection and guarantee your satisfaction. Contact any of us or any of our sales staff for more information.

SALE DAY VIDEO SALE

We have elected to go with a video display only sale again for 2020 and forgo running big, two year old bulls through the handling system and into the sale ring. We do this primarily for the safety of the bulls to reduce the risk of injury and bruising. As always, the bulls will be displayed and sorted for viewing in pens right outside of the sale center. We feel that with your pre-sale evaluation and the excellent videos broadcast on the screens, that you can make a selection with confidence just as previously.

DELIVERY

Bulls will be delivered free of charge anywhere in Saskatchewan, Alberta, British Columbia or Manitoba. Delivery will start the week after the sale. For US customers we will deliver bulls free of charge to central locations in the northern and central USA.

FINANCING OPTIONS

Cash or cheque are accepted sale day.

ONLINE CATALOGUE

www.blairscattleco.com

ONLINE BIDDING



www.dvauction.com

Register to bid early as bidding approval is required. Contact Sarah Buchanan with DVAuction.com with any questions at 306.681.5340 or email her at sbuchanan@gold-bar.com.

Internet Bidding Available



www.dlms.ca

Mark Shologan 780.699.5082

HOTEL ACCOMMODATIONS

Sleep Inn Regina East
306.791.1925
Ask for the Blairs.Ag room rate.



THESE ARE THE PEOPLE THAT MAKE

the world go round at



Blake MacMillan



Kent McCune



Chad Haaland



Jordie Buba and Luke Lewis



Grant Hamilton



The Jackson Family



Martin Koyle & Family



Rhett Jones & Family



Wade Morrow



Pat Stevenson

Platinum Warranty Program

Blairs.Ag Cattle Company guarantees to sell a bull that is able to pass a semen test prior to the 2020 breeding season. Should any bull purchased through the Pursuit of Excellence bull sale fail to be a satisfactory breeder or be unable to physically service a cow or heifer, he will be replaced with a bull of equal value. Should this not be possible, we will issue a credit to go towards the purchase of another bull. We will not however provide warranty for mismanagement.

While under our warranty, the bull is covered for injury, sickness or death. We will service your needs with a replacement bull, a sale credit or a cash settlement. Should you have any problems with a bull, please contact Blake MacMillan and he will work to make sure your cows get bred and you are a satisfied customer. We do have back up bulls set aside and that will be the first step to cover off any warranty issues. Blair's Platinum Bull Warranty is designed to protect your purchase during the most high risk time of a bull's life.

We offer the following options and are required to be paid on the day of the sale. It is the buyer's responsibility to purchase at the settlement desk.

PLAN	DURATION	RATE
#1	90 days	4%
#2	6 months	6%
#3	12 months	10%
#4	18 months	14%

COVERAGE:

Plan #1 – This plan is designed to warranty a bull from sale time until the bull can be delivered and has the opportunity to adjust to its new surroundings. The length of the Plan #1 warranty is 90 days. Plan #1 warranty covers 100% of the purchase price less the salvage value when applicable.

Plan #2– This plan covers the bull through breeding season and is 100% of the purchase price less the salvage value when applicable.

Plan #3 – This plan covers the bull for a full year which will include one (1) breeding season and one wintering period. In Plan #3 the warranty covers 100% of the purchase price less the salvage value when applicable.

Plan #4 – This plan covers the bull for eighteen(18) months and should cover two (2) breeding seasons and one (1) wintering period. In Plan #4 the warranty covers 100% of the purchase price for the first year (365 days) and 75% of the purchase price for the remaining six (6) months. In both situations the salvage price of the bull is deducted from the purchase price before the settlement is made.

EXCLUSION TO WARRANTY:

Any injury or death due to malicious, willful or intentional acts or mistreatment are considered fraudulent claims.

Should an issue arise with your bull please notify Blair's immediately by phone 306-528-7484 or by email bmacmillan@blairs.ag. You will also need to contact a licensed veterinarian to diagnose and treat the animal and fill out a vet form. If the animal dies, a post mortem will be required.

Note: All bulls that are left at Jackson Cattle after the sale for delivery will be automatically charged the 90 day Plan #1 bull warranty on their invoice. This is designed to protect both the buyer and seller.



Every bull sale should have a theme or a group of bulls that anchor the sale. This year it is very easy to make that decision. The 2020 bull sale is anchored by eight(8) Bar-E-L Erica 74A sons. Erica is by far the most influential black donor in our program and honestly, I think she is just getting started. Bulls and females out of Erica 74A are equally as impressive and I can't say enough good about the impact she is having on our program. As you look through this group you will see sons off SAV Renown, Duff Napoleon and PM Thunderstruck. You decide which sire matched up best as it relates to your needs but don't sit on the sideline and let others own these bulls without putting up a fight. Take a look at the Erica picture and imagine a herd full of females with her influence. We all talk about the importance of the dam when selecting a herd sire. This might be the easiest herd sire decision you will ever have to make. #justsaying



HLC Erica 561G
Erica Daughter

A STORY WORTH TELLING

HLC Erica 561G is a pretty cool story and she is just getting started. For those of you that don't know the story... here it is. We have been proud supporters of the Canadian Angus Association Legacy sale from the beginning. A couple years ago we donated a package of the Erica 74A x S A V National Anthem embryo's in the "Legacy Sale." Roger Reynolds from CSI was astute enough that day to recognize the potential value and stepped up to support the Canadian Angus Foundations and the Canadian Angus Junior Program. The resulting heifer calf was a partnership with Roger and Hollinger Cattle and was selected to join the CWA show string with Hollinger's. She was the star of the week and the barn was a buzz with people asking each other if they had been over to the Hollinger stall to see the Erica 74A daughter. After CWA as Hollinger's prepared for their sale, there were many breeders and industry people that asked Chad and Roger if they might consider adding her to the sale as an added lot. After careful consideration and pressure, they agreed and the word travelled fast. Kelly, Martie Jo and the girls from S A V had seen her at Agribition and they showed a keen interest in the possibility of owning her once they found out she was available for sale. On that day ½ interest sold for \$34,000 and S A V became the new owner. It's a great example of what can happen in an industry as great as the Angus business.



Lot 1

LOT 1

- BBC 268F • Feb. 22, 2018 • 2042474
- BW: 96 lbs • ADJ WW: 681 lbs

BLAIR'S **ROCCO** 268F

RITO 707 OF IDEAL 3407 7075
S A V RENOWN 3439
 S A V BLACKCAP MAY 4136

BAR-E-L NATURAL LAW 52Y
BAR-E-L ERICA 74A
 HF ERICA 339T

R R RITO 707
 IDEAL 3407 OF 1418 076
 S A V 8180 TRAVELER 004
 S A V MAY 2397

S A V BISMARCK 5682
 BAR-E-L MAGNOLIA 143K
 PEAK DOT FAME 2N
 HF ERICA 46P



S A V Renown 3439A

CE	BW	WW	YW	MILK	TM
•	2.5	62	104	25	55



Lot 2

LOT 2

- BBC 266F • Feb. 16, 2018 • 2040571
- BW: 90 lbs • ADJ WW: 707 lbs

BLAIR'S **PARADIGM SHIFT** 266F

- DUFF DISTINCTION 9105
- DUFF NAPOLEON 232**
- DUFF EUR 443 MERLE 808

- BAR-E-L NATURAL LAW 52Y
- BAR-E-L ERICA 74A**
- HF ERICA 339T

- DUFF BASIC INSTINCT 6501
- DUFF NL B351 LADY POP 619
- DUFF NEW EDITION 6108
- DCC NL 652K MERLE 443
- S A V BISMARCK 5682
- BAR-E-L MAGNOLIA 143K
- PEAK DOT FAME 2N
- HF ERICA 46P

CE	BW	WW	YW	MILK	TM
•	1.8	49	75	20	45



LOTS 2-7

Full Siblings

DUFF Napoleon 232

Duff Napoleon 232 was added to our program to add an outcross pedigree in a moderate made package. He exhibits massive muscle definition and has an impeccable foot. If you tour our herd you will love the Napoleon daughters and you will especially love their udders.

LOT 3

• BBC 269F • Feb. 22, 2018 • 2040669
 • BW: 99 lbs • ADJ WW: 792 lbs

BLAIR'S **NAPOLEON** 269F

DUFF DISTINCTION 9105
DUFF NAPOLEON 232
 DUFF EUR 443 MERLE 808

BAR-E-L NATURAL LAW 52Y
BAR-E-L ERICA 74A
 HF ERICA 339T

DUFF BASIC INSTINCT 6501
 DUFF NL B351 LADY POP 619
 DUFF NEW EDITION 6108
 DCC NL 652K MERLE 443

S A V BISMARCK 5682
 BAR-E-L MAGNOLIA 143K
 PEAK DOT FAME 2N
 HF ERICA 46P

CE	BW	WW	YW	MILK	TM
•	1.8	49	75	20	45



LOT 4

• BBC 571F • Mar. 2, 2018 • 2040664
 • BW: 85 lbs • ADJ WW: 670 lbs

BLAIR'S **NAPOLEON** 571F

DUFF DISTINCTION 9105
DUFF NAPOLEON 232
 DUFF EUR 443 MERLE 808

BAR-E-L NATURAL LAW 52Y
BAR-E-L ERICA 74A
 HF ERICA 339T

DUFF BASIC INSTINCT 6501
 DUFF NL B351 LADY POP 619
 DUFF NEW EDITION 6108
 DCC NL 652K MERLE 443

S A V BISMARCK 5682
 BAR-E-L MAGNOLIA 143K
 PEAK DOT FAME 2N
 HF ERICA 46P

CE	BW	WW	YW	MILK	TM
•	1.8	49	75	20	45



LOT 5

• BBC 586F • Mar. 6, 2018 • 2040662
 • BW: 90 lbs • ADJ WW: 667 lbs

BLAIR'S **NAPOLEON** 586F

DUFF DISTINCTION 9105
DUFF NAPOLEON 232
 DUFF EUR 443 MERLE 808

BAR-E-L NATURAL LAW 52Y
BAR-E-L ERICA 74A
 HF ERICA 339T

DUFF BASIC INSTINCT 6501
 DUFF NL B351 LADY POP 619
 DUFF NEW EDITION 6108
 DCC NL 652K MERLE 443

S A V BISMARCK 5682
 BAR-E-L MAGNOLIA 143K
 PEAK DOT FAME 2N
 HF ERICA 46P

CE	BW	WW	YW	MILK	TM
•	1.8	49	75	20	45

LOT 6

• BBC 588F • Mar. 6, 2018 • 2040660
 • BW: 97 lbs • ADJ WW: 728 lbs

BLAIR'S **NAPOLEON** 588F

DUFF DISTINCTION 9105
DUFF NAPOLEON 232
 DUFF EUR 443 MERLE 808

BAR-E-L NATURAL LAW 52Y
BAR-E-L ERICA 74A
 HF ERICA 339T

DUFF BASIC INSTINCT 6501
 DUFF NL B351 LADY POP 619
 DUFF NEW EDITION 6108
 DCC NL 652K MERLE 443

S A V BISMARCK 5682
 BAR-E-L MAGNOLIA 143K
 PEAK DOT FAME 2N
 HF ERICA 46P

CE	BW	WW	YW	MILK	TM
•	1.8	49	75	20	45



LOT 7

• BBC 624F • Mar. 10, 2018 • 2042442
• BW: 87 lbs • ACT WW: 647 lbs

BLAIR'S **NAPOLEON** 624F

DUFF DISTINCTION 9105
DUFF NAPOLEON 232
DUFF EUR 443 MERLE 808

DUFF BASIC INSTINCT 6501
DUFF NL B351 LADY POP 619
DUFF NEW EDITION 6108
DCC NL 652K MERLE 443

BAR-E-L NATURAL LAW 52Y
BAR-E-L ERICA 74A
HF ERICA 339T

S A V BISMARCK 5682
BAR-E-L MAGNOLIA 143K
PEAK DOT FAME 2N
HF ERICA 46P

CE	BW	WW	YW	MILK	TM
•	1.8	49	75	20	45

LOT 8

• BBC 816F • Mar. 7, 2018 • 2087279
• BW: 90 lbs • ADJ WW: 721 lbs

BLAIR'S **THUNDERSTRUCK** 816F

HF THUNDERBIRD 146Y
PM THUNDERSTRUCK 22'13
MVF ROSEBUD 313U

HF TIGER 5T
HF ECHO 187N
WESTERN WIDESPREAD 1L
MVF ROSEBUD 906N

BAR-E-L NATURAL LAW 52Y
BAR-E-L ERICA 74A
HF ERICA 339T

S A V BISMARCK 5682
BAR-E-L MAGNOLIA 143K
PEAK DOT FAME 2N
HF ERICA 46P

CE	BW	WW	YW	MILK	TM
•	3.1	51	82	25	50



LOT 9

• BBC 804F • Feb. 28, 2018 • 2089327
• BW: 80 lbs • ADJ WW: 613 lbs

BLAIR'S **THUNDERSTRUCK** 804F

HF THUNDERBIRD 146Y
PM THUNDERSTRUCK 22'13
MVF ROSEBUD 313U

HF TIGER 5T
HF ECHO 187N
WESTERN WIDESPREAD 1L
MVF ROSEBUD 906N

SOO LINE MOTIVE 9016
SOO LINE PRIDE 2043
EXAR PRIDE 84002

HF KODIAK 5R
TLA BEAUTY 5R
STEVENSON MONEYMAKER R185
MONARCH PRIDE P199

CE	BW	WW	YW	MILK	TM
••	2.0	51	88	24	49

The Motive dam to Blair's Thunderstruck 804F is a favourite at the ranch and was one of our picks out of the Soo Line Cattle dispersal. The Thunderstruck x Motive mating really worked well here and you will have 804F marked high on sale day.

Charlo



Coleman Charlo 0256

Coleman Charlo has done as many good things for the Angus breed as maybe any bull in its history. Take a look at the resulting matings to these great donors. Calving ease and phenotype are two things that are present in both of these bulls. All great bulls come from great dams. #enoughsaid

LOT 10 • BBC 315F • Apr. 4, 2018 • 2070362
 • BW: 81 lbs • ADJ WW: 600 lbs

LOT 11 • BBC 327F • Apr. 8, 2018 • 2049344
 • BW: 84 lbs • ADJ WW: 705 lbs

BLAIR'S CHARLO 315F

O C C PAXTON 730P
COLEMAN CHARLO 0256
 BOHI ABIGALE 6014

O C C FOCUS 813F
 O C C BLACKBIRD 736K
 SITZ TRAVELER 8180
 S A V ABIGALE 6062

DUFF E BLAST 8138
DUFF EB 692 BLACKBIRD 0256
 DUFF NL 1T2 BLACKBIRD 692

DUFF NEW ATTRACTION 6110
 DUFF EMB814G DIXIE ERICA 624
 DCC NEW LOOK 101
 R T R BLACKBIRD 1T2

CE	BW	WW	YW	MILK	TM
•••	0.8	44	74	23	44

BLAIR'S CHARLO 327F

O C C PAXTON 730P
COLEMAN CHARLO 0256
 BOHI ABIGALE 6014

O C C FOCUS 813F
 O C C BLACKBIRD 736K
 SITZ TRAVELER 8180
 S A V ABIGALE 6062

N BAR EMULATION EXT
COLEMAN DONNA 812
 KMK DONNA J311

EMULATION N BAR 5522
 N BAR PRIMROSE 2424
 D H D TRAVELER 6807
 BROOKS DONNA 319

CE	BW	WW	YW	MILK	TM
••	1.0	44	77	28	49



DUFF EB 692 Blackbird 0256



Coleman Donna 812

Ms Final Answer



RAB Ms Final Answer 4955W

4955W was known as Megalass at Blairs.Ag Cattle. She was selected out of the Brown program in Texas for her massive amount of shape and dimension. The SAV Final Answer in her pedigree guarantees calving ease and maternal traits and these sons should be studied and considered in terms of their ability to make cows with longevity and great udders.

LOT **12**

• BBC 821F • Mar. 10, 2018 • 2087113
• BW: 85 lbs • ADJ WW: 682 lbs

BLAIR'S **THUNDERSTRUCK** 821F

HF THUNDERBIRD 146Y
PM THUNDERSTRUCK 22'13
MVF ROSEBUD 313U

HF TIGER 5T
HF ECHO 187N
WESTERN WIDESPREAD 1L
MVF ROSEBUD 906N

S A V FINAL ANSWER 0035
RAB MS FINAL ANSWER 4955W
RAB MS PREDESTINED 4826T

SITZ TRAVELER 8180
S A V EMULOUS 8145
G A R PREDESTINED
RAB MS DIRECTION 4955N

CE	BW	WW	YW	MILK	TM
•	3.6	59	100	21	50

WATCH & BID ONLINE

DVAuction
Broadcasting Real-Time Auctions

Internet Bidding Available

D | L | M | S
www.dlms.ca

**SEE SALE INFORMATION PAGE
FOR MORE DETAILS**



Lot 13

LOT 13

- BBC 802F • Feb. 28, 2018 • 2087266
- BW: 78 lbs • ADJ WW: 613 lbs

BLAIR'S **NAPOLEON** 802F

DUFF DISTINCTION 9105
DUFF NAPOLEON 232
 DUFF EUR 443 MERLE 808

S A V FINAL ANSWER 0035
RAB MS FINAL ANSWER 4955W
 RAB MS PREDESTINED 4826T

DUFF BASIC INSTINCT 6501
 DUFF NL B351 LADY POP 619
 DUFF NEW EDITION 6108
 DCC NL 652K MERLE 443

SITZ TRAVELER 8180
 S A V EMULOUS 8145
 G A R PREDESTINED
 RAB MS DIRECTION 4955N

CE	BW	WW	YW	MILK	TM
•••	2.3	57	93	17	45

LOT 14

- BBC 813F • Mar. 5, 2018 • 2087265
- BW: 75 lbs • ADJ WW: 757 lbs

BLAIR'S **NAPOLEON** 813F

DUFF DISTINCTION 9105
DUFF NAPOLEON 232
 DUFF EUR 443 MERLE 808

S A V FINAL ANSWER 0035
RAB MS FINAL ANSWER 4955W
 RAB MS PREDESTINED 4826T

DUFF BASIC INSTINCT 6501
 DUFF NL B351 LADY POP 619
 DUFF NEW EDITION 6108
 DCC NL 652K MERLE 443

SITZ TRAVELER 8180
 S A V EMULOUS 8145
 G A R PREDESTINED
 RAB MS DIRECTION 4955N

CE	BW	WW	YW	MILK	TM
•••	2.3	57	93	17	45

BLAIR'S **FINAL ANSWER** 500F

SITZ TRAVELER 8180
S A V FINAL ANSWER 0035
 S A V EMULOUS 8145

G D A R TRAVELER 71
 SITZ EVERELDA ENTENSE 1137
 BON VIEW BANDO 598
 S A V SKY EMULOUS 2124

SILVEIRAS STYLE 9303
PFLC BARBARA 102D
 BAILEY ACRES BARBARA 2X

GAMBLES HOT ROD
 SILVEIRAS ELBA 2520
 S A V NET WORTH 4200
 BAILEY ACRES BARBARA 3P

CE	BW	WW	YW	MILK	TM
•••	0.2	62	102	23	54

Blair's Final Answer 500F was an in-dam purchase from Paradise Farms in Ontario and he has been plum impressive from the day he hit the ground at 70 lbs. This guy is a powerfully designed son of S A V Final Answer 0035 and will be one of the most powerful, calving ease bulls to sell in 2020. His sister was a hit in our Agribition string and sold to Geis Angus out of the stall for \$13,000. It's pretty safe to say that Barbara 102D will be headed to the embryo program in 2020. Check out the birth to WW spread and think about how many trucks you will have to wear out trying to find one with this kind of power and dimension.



PFLC Barbara 102D
 Dam of 500F



S A V Madame Pride 0151

S A V Madame Pride 0151 is the Density daughter off S A V Madame Pride 0075. Normally that would be plenty enough to say but it's important to note that 0151 is also the dam to S A V Renovation, that is doing such great things at Brooking Angus for Justin and Tawnie. These sons off Duff Napoleon and PM Thunderstruck have really impressed us and we are excited to see them work in herds across the nation. Phenotype, calving ease and quality udders are all expectations from these genetics.



Lot 17

LOT 16

• BBC 304F • Mar. 31, 2018 • 2049385
• BW: 77 lbs • ADJ WW: 675 lbs

BLAIR'S **NAPOLEON** 304F

DUFF DISTINCTION 9105
DUFF NAPOLEON 232
DUFF EUR 443 MERLE 808

DUFF BASIC INSTINCT 6501
DUFF NL B351 LADY POP 619
DUFF NEW EDITION 6108
DCC NL 652K MERLE 443

S A V 004 DENSITY 4336
S A V MADAME PRIDE 0151
S A V MADAME PRIDE 0075

S A V 8180 TRAVELER 004
S A V MAY 7238
S A F 598 BANDO 5175
S A V MADAME PRIDE 8264

CE	BW	WW	YW	MILK	TM
•••	1.5	48	76	18	42

LOT 17

• BBC 308F • Apr. 2, 2018 • 2049279
• BW: 84 lbs • ADJ WW: 720 lbs

BLAIR'S **NAPOLEON** 308F

DUFF DISTINCTION 9105
DUFF NAPOLEON 232
DUFF EUR 443 MERLE 808

DUFF BASIC INSTINCT 6501
DUFF NL B351 LADY POP 619
DUFF NEW EDITION 6108
DCC NL 652K MERLE 443

S A V 004 DENSITY 4336
S A V MADAME PRIDE 0151
S A V MADAME PRIDE 0075

S A V 8180 TRAVELER 004
S A V MAY 7238
S A F 598 BANDO 5175
S A V MADAME PRIDE 8264

CE	BW	WW	YW	MILK	TM
•••	1.5	48	76	18	42

LOT 18

• BBC 807F • Mar. 3, 2018 • 2087267
• BW: 85 lbs • ADJ WW: 709 lbs

BLAIR'S **THUNDERSTRUCK** 807F

HF THUNDERBIRD 146Y
PM THUNDERSTRUCK 22'13
MVF ROSEBUD 313U

HF TIGER 5T
HF ECHO 187N
WESTERN WIDESPREAD 1L
MVF ROSEBUD 906N

S A V 004 DENSITY 4336
S A V MADAME PRIDE 0151
S A V MADAME PRIDE 0075

S A V 8180 TRAVELER 004
S A V MAY 7238
S A F 598 BANDO 5175
S A V MADAME PRIDE 8264

CE	BW	WW	YW	MILK	TM
••	2.8	49	83	23	47



Duff Napoleon 232

Final Exam



OSU Final Exam 3139

Sometimes when you put together a catalogue you uncover some very interesting details and this group of bulls uncovered something pretty neat. These bulls go back to donors that were added to our program for their power and dimension, yes, but four of them were also added from dispersals and from breeders I have the utmost respect for in terms of their ability to understand and breed top Angus genetics. You will see the Mayflower 43N from Neil Carruthers, Tibbie 25N, Lady Anne 935S and Tibbie 60M from Scott Anderson. OSU Final Exam 3139 is the bull that everyone should be using in their program. Credit goes to Kent McCune and Blake MacMillan for finding him in the yards in Denver at the Oklahoma State University pen.



Duff New Generation 6107



Blair's Lady Ann 522D
Final Exam Daughter

LOT 19

• BBC 532F • Feb. 20, 2018 • 2027997
• BW: 91 lbs • ADJ WW: 764 lbs

BLAIR'S **FINAL EXAM** 532F

S A V FINAL ANSWER 0035
OSU FINAL EXAM 3139
OSU EMPRESS 1105

DUFF NEW GENERATION 6107
BLAIR'S TIBBIE 219Z
MVF TIBBIE 60M

SITZ TRAVELER 8180
S A V EMULOUS 8145
S A V BRILLIANCE 8077
OSU EMPRESS 8175

O C C GENESIS 872G
O C C DIXIE ERICA 814G
VERMILION DATELINE 7078
MVHF TIBBIE 39B

CE	BW	WW	YW	MILK	TM
•	2.7	59	102	17	47

LOT 20

• BBC 673F • Mar. 18, 2018 • 2028405
• BW: 73 lbs • ADJ WW: 694 lbs

BLAIR'S **FINAL EXAM** 673F

S A V FINAL ANSWER 0035
OSU FINAL EXAM 3139
OSU EMPRESS 1105

HF INSIGNIA 204W
BLAIR'S ANDREA 301Y
WRIGHTS ANDREA 912W

SITZ TRAVELER 8180
S A V EMULOUS 8145
S A V BRILLIANCE 8077
OSU EMPRESS 8175

HF TIGER 5T
HF ECHO 187N
EGGEN FREEDOM 174P 52T
SOUTHLAND ANDREA 125S

CE	BW	WW	YW	MILK	TM
•••	-1.1	46	84	15	38

LOT 21

• BBC 732F • Apr. 9, 2018 • 2028421
• BW: 81 lbs • ACT WW: 548 lbs

BLAIR'S **FINAL EXAM** 732F

S A V FINAL ANSWER 0035
OSU FINAL EXAM 3139
OSU EMPRESS 1105

DUFF NEW GENERATION 6107
BLAIRS LADY ANNE 324Z
MVF LADY ANN 935S

SITZ TRAVELER 8180
S A V EMULOUS 8145
S A V BRILLIANCE 8077
OSU EMPRESS 8175

O C C GENESIS 872G
O C C DIXIE ERICA 814G
G A R GRID MAKER
BOTANY ANGUS LADY ANN 17J

CE	BW	WW	YW	MILK	TM
••	1.8	49	91	11	36

LOT 22

• BBC 681F • Mar. 20, 2018 • 2028411
• BW: 91 lbs • ADJ WW: 761 lbs

BLAIR'S **FINAL EXAM** 681F

S A V FINAL ANSWER 0035
OSU FINAL EXAM 3139
OSU EMPRESS 1105

DUFF NEW GENERATION 6107
BLAIRS TIBBIE 337Z
MVF TIBBIE 25N

SITZ TRAVELER 8180
S A V EMULOUS 8145
S A V BRILLIANCE 8077
OSU EMPRESS 8175

O C C GENESIS 872G
O C C DIXIE ERICA 814G
BON VIEW NEW DESIGN 878
BXB FIRST DATE 208L

CE	BW	WW	YW	MILK	TM
•	2.2	56	101	18	46

LOT 23

• BBC 306F • Mar. 31, 2018 • 2032267
• BW: 89 lbs • ADJ WW: 795 lbs

BLAIR'S **FINAL EXAM** 306F

S A V FINAL ANSWER 0035
OSU FINAL EXAM 3139
OSU EMPRESS 1105

DUFF NEW GENERATION 6107
BLAIR'S MAYFLOWER 364A
CARRUTHERS MAYFLOWER 43N

SITZ TRAVELER 8180
S A V EMULOUS 8145
S A V BRILLIANCE 8077
OSU EMPRESS 8175

O C C GENESIS 872G
O C C DIXIE ERICA 814G
VERMILION DATELINE 7078
CARRUTHERS MAYFLOWER 12J

CE	BW	WW	YW	MILK	TM
•	2.4	60	103	17	47

LOT 24

• BBC 302F • Mar. 9, 2018 • 2032260
• BW: 76 lbs • ADJ WW: 728 lbs

BLAIR'S **FINAL EXAM** 302F (RC)

S A V FINAL ANSWER 0035
OSU FINAL EXAM 3139
OSU EMPRESS 1105

RED SOO LINE POWER EYE 161X
RED WEBR MS KITTY 339
RED BJF KITTY 9059W

SITZ TRAVELER 8180
S A V EMULOUS 8145
S A V BRILLIANCE 8077
OSU EMPRESS 8175

RED COCKBURN RIBEYE 308U
RED TR LYNN 301R
RED BFCK CHEROKEE CNYN 4912
RED CBR MISS KITTY 316-122

CE	BW	WW	YW	MILK	TM
•••	-1.4	51	88	12	38

National Anthem



S A V National Anthem 5740

LOT **25**

• BBC 685F • Mar. 21, 2018 • 2028413
• BW: 86 lbs • ADJ WW: 602 lbs

BLAIR'S NATIONAL ANTHEM 685F

S A V INTERNATIONAL 2020
S A V NATIONAL ANTHEM 5740
A C DUKE GIRL 57

S A V HARVESTOR 0338
S A V EMBLYNETTE 5483
CAR TRACKER 305
A C DUKE GIRL 330

CUDLOBE YELLOWSTONE 80M
SOO LINE FAVORITE 0260
ANGUS GLEN FAVORITE 9N

VERMILION YELLOWSTONE
STEVENSON ENCHANTRESS 425F
BT RIGHT TIME 24J
ANGUS GLEN FAVORITE 6G

CE	BW	WW	YW	MILK	TM
•	4.0	44	81	26	48

S A V National Anthem 5740 was selected at Schaff's to add the performance that comes with the S A V International 2020 genetics. If you want to add length of spine, bone and overall performance then give these S A V National Anthem sons a serious look. An S A V National Anthem daughter off Erica 74A was a hit at Agribition this fall for Roger Reynolds in the Hollinger Land & Cattle stall.

LOT **26**

• BBC 694F • Mar. 24, 2018 • 2065878
• BW: 87 lbs • ADJ WW: 740 lbs

BLAIR'S NATIONAL ANTHEM 694F

S A V INTERNATIONAL 2020
S A V NATIONAL ANTHEM 5740
A C DUKE GIRL 57

S A V HARVESTOR 0338
S A V EMBLYNETTE 5483
CAR TRACKER 305
A C DUKE GIRL 330

HF KODIAK 5R
BLAIR'S LOOKIN GOOD 415B
RED DAMAR LOOKIN REAL GOODY267

SANDY BAR ADVANTAGE 43M
WILBAR RUBY 955N
RED TER-RON REALDEAL 01W
RED DAMAR LOOKIN GOOD W057

CE	BW	WW	YW	MILK	TM
••	1.5	50	85	24	49

LOT **27**

• BBC 674F • Mar. 18, 2018 • 2028406
• BW: 73 lbs • ADJ WW: 703 lbs

BLAIR'S NATIONAL ANTHEM 674F

S A V INTERNATIONAL 2020
S A V NATIONAL ANTHEM 5740
A C DUKE GIRL 57

S A V HARVESTOR 0338
S A V EMBLYNETTE 5483
CAR TRACKER 305
A C DUKE GIRL 330

DAINES HEAVY SI 57Z
NORTHLINE RACHEL 903C
NORTHLINE RACHEL 903U

DAINES BLACK STOCKMAN 14X
DAINES MISS ANCHOR 34T
YOUNG DALE DOUBLE T 106P
NORTHLINE RACHEL 803S

CE	BW	WW	YW	MILK	TM
••	2.1	42	68	28	49



Lot 29

LOT 28

• BBC 818F • Mar. 9, 2018 • 2087261
 • BW: 80 lbs • ADJ WW: 713 lbs

BLAIR'S **BADGER** 818F

COLEMAN CHARLO 0256
 B/C BLAIR BADGER 5023
 DUFF AMIGO 927K JUANADA 071

DUFF BASIC INSTINCT 6501
 RSKY 6540 MS INSTINCT 0065
 RSKY 0108 MS MAGICIAN 6540

O C C PAXTON 730P
 BOHI ABIGALE 6014
 DUFF AMIGO 815
 O C C JUANADA 927K

O C C MISSING LINK 830M
 O C C DIXIE ERICA 814G
 O C C MAGICIAN 888M
 JAUER ANCHOR 3002 0108

CE	BW	WW	YW	MILK	TM
••	2.0	54	93	25	51

LOT 29

• BBC 375F • Apr. 24, 2018 • 2032722
 • BW: 80 lbs • ADJ WW: 664 lbs

BLAIR'S **OMEGA** 375F

COLEMAN CHARLO 0256
 BLAIR'S OMEGA 624C
 RAB MS FINAL ANSWER 4955W

DUFF NEW GENERATION 6107
 BLAIR'S DELLA 525B
 DBRL 4336 DELLA 28S

O C C PAXTON 730P
 BOHI ABIGALE 6014
 S A V FINAL ANSWER 0035
 RAB MS PREDESTINED 4826T

O C C GENESIS 872G
 O C C DIXIE ERICA 814G
 S A V 004 DENSITY 4336
 CRESCENT CREEK EULA 120L

CE	BW	WW	YW	MILK	TM
••	2.2	40	71	23	43



Duff Amigo 927K Juanada 071
 Grand Dam of 818F



RSKY 6540 Ms Instinct 0065
 Dam of 818F

LOT 30

• BBC 549F • Feb. 25, 2018 • 2052295
• BW: 87 lbs • ADJ WW: 672 lbs

BLAIR'S **PRESIDENT** 549F

COLEMAN CHARLO 0256
S A V PRESIDENT 6847
S A V BLACKCAP MAY 4136

O C C PAXTON 730P
BOHI ABIGALE 6014
S A V 8180 TRAVELER 004
S A V MAY 2397

SITZ UPWARD 307R
VAR SOPHIE BRIDGETT 151
VAR SOPHIE BRIDGETT 5102

CONNELLY ONWARD
SITZ HENRIETTA PRIDE 81M
G A R GRID MAKER
VAR IDEAL SOPHIE BRIDGT 0670

CE	BW	WW	YW	MILK	TM
•	3.0	61	110	29	60

LOT 31

• BBC 700F • Mar. 26, 2018 • 2056931
• BW: 85 lbs • ADJ WW: 660 lbs

BLAIR'S **LOCOMOTIVE** 700F

SOO LINE MOTIVE 9016
SOO LINE LOCOMOTIVE 1403
SHADY BROOK EVERENTENSE 2039

HF KODIAK 5R
TLA BEAUTY 5R
S A V FINAL ANSWER 0035
SCR EVERELDA ENTENSE 748

MFCC PANIC SWITCH APOLLO 3A
BLAIR'S RUBY 726C
MFCC PRISM RUBY 46A

BELVIN PANIC SWITCH 2'11
MFCC PENDLETON PATRICIA 6Y
BLAIR'S PRISM 609X
KENBERT RENEGADE RUBY 74W

CE	BW	WW	YW	MILK	TM
••	1.2	38	72	23	42

LOT 32

• BBC 340F • Apr. 10, 2018 • 2052033
• BW: 78 lbs • ADJ WW: 717 lbs

BLAIR'S **SYMMETRY** 340F

HF SYNDICATE 213Z
U-2 SYMMETRY 197C
U-2 PRIDE 391A

CONNELLY CONSENSUS 7229
HF MISS BLACKCAP 27R
YOUNG DALE XCLUSIVE 25X
U2 PRIDE 433W

SOO LINE LOCOMOTIVE 1403
BLAIR'S LADY ANNE 371D
BLAIRS LADY ANNE 361Z

SOO LINE MOTIVE 9016
SHADY BROOK EVERENTENSE 2039
DUFF NEW GENERATION 6107
MVF LADY ANN 935S

CE	BW	WW	YW	MILK	TM
•••	2.8	41	78	22	43

Owned with Rob Saik



SOO LINE Locomotive 1403

ADA Challenger 119C

ADA Challenger was added to our bull battery to add more S A V Brilliance with a splash of BC Lookout 7024. Look through the maternal side of these bulls and you will find Motive 9016 and Cudlobe Yellowstone 80M on BBC 522F and the outcross WAF Zorzal and Figure 8 Tommy Boy on BBC 530F. Both deserve a look.

LOT 33

• BBC 530F • Feb. 19, 2018 • 2056933
• BW: 92 lbs • ADJ WW: 646 lbs

BLAIR'S **CHALLENGER** 530F

S A V BRILLIANCE 8077
ADA CHALLENGER 119C
ADA UNFORGETTABLE GIRL 1H'08

S A V BISMARCK 5682
S A V BLACKCAP MAY 5270
B C LOOKOUT 7024
MOUNTAIN HOLLY

WAF ZORZAL 321U
LOOKOUT OAKLEAF 44Y
LOOKOUT OAKLEAF 34T

TRES MARIAS 6301 ZORZAL
TRES MARIAS 6582 CUMELEN 5632
FIGURE 8 ANGUS TOM BOY 509R
LOOKOUT OAKLEAF 262M

CE	BW	WW	YW	MILK	TM
•	3.5	35	56	15	33

LOT 34

• BBC 522F • Feb. 13, 2018 • 2056932
• BW: 92 lbs • ADJ WW: 578 lbs

BLAIR'S **CHALLENGER** 522F

S A V BRILLIANCE 8077
ADA CHALLENGER 119C
ADA UNFORGETTABLE GIRL 1H'08

S A V BISMARCK 5682
S A V BLACKCAP MAY 5270
B C LOOKOUT 7024
MOUNTAIN HOLLY

SOO LINE MOTIVE 9016
VOS VEGAS ANNIE K ET 4C
SOO LINE ANNIE K 1094

HF KODIAK 5R
TLA BEAUTY 5R
CUDLOBE YELLOWSTONE 80M
SOO LINE ANNIE K 3012

CE	BW	WW	YW	MILK	TM
•	3.1	28	53	16	30



LOT 35

• BBC 652F • Mar. 14, 2018 • 2103332
 • BW: 87 lbs • ADJ WW: 710 lbs

BLAIR'S **CASINO** 652F

CFCC BLACK JACK 001
KR CASINO 6243
 MALSONS SAVANNAH 27Y

SILVEIRAS EL CAPITAN 6510
 CFCC FANTASIA DATELINE 633
 VAR ALLEGIANCE 5157
 MALSONS SAVANNAH 27W

DUFF E BLAST 8138
RUDOW'S TINGER BLAST 248
 RUDOW'S TINKERBELL 723

DUFF NEW ATTRACTION 6110
 DUFF EMB814G DIXIE ERICA 624
 DCC NEW LOOK 101
 CANE RIDGE LUCY 2270L

CE	BW	WW	YW	MILK	TM
•	2.5	48	80	25	49

I saw KR Casino 6243 in Denver and immediately knew we needed to use him in our program. He was used exclusively in our embryo program and these are the first genetics to be sold from those matings. Balance and performance best define Casino genetics.

LOT 36

• BBC 801F • Feb. 27, 2018 • 2101616
 • BW: 85 lbs • ADJ WW: 641 lbs

BLAIR'S **CASINO** 801F

CFCC BLACK JACK 001
KR CASINO 6243
 MALSONS SAVANNAH 27Y

SILVEIRAS EL CAPITAN 6510
 CFCC FANTASIA DATELINE 633
 VAR ALLEGIANCE 5157
 MALSONS SAVANNAH 27W

SOO LINE MOTIVE 9016
SOO LINE PRIDE 2043
 EXAR PRIDE 84002

HF KODIAK 5R
 TLA BEAUTY 5R
 STEVENSON MONEYMAKER R185
 MONARCH PRIDE P199

CE	BW	WW	YW	MILK	TM
•	2.3	54	98	29	56

LOT 37

• BBC 808F • Mar. 3, 2018 • 2101617
 • BW: 85 lbs • ADJ WW: 787 lbs

BLAIR'S **CASINO** 808F

CFCC BLACK JACK 001
KR CASINO 6243
 MALSONS SAVANNAH 27Y

SILVEIRAS EL CAPITAN 6510
 CFCC FANTASIA DATELINE 633
 VAR ALLEGIANCE 5157
 MALSONS SAVANNAH 27W

SOO LINE MOTIVE 9016
SOO LINE PRIDE 2043
 EXAR PRIDE 84002

HF KODIAK 5R
 TLA BEAUTY 5R
 STEVENSON MONEYMAKER R185
 MONARCH PRIDE P199

CE	BW	WW	YW	MILK	TM
•	2.3	54	98	29	56

MS Instinct



RSKY 6540 MS Instinct 0065

Angus females like RSKY MS Instinct 0065 don't come along every day. She is fast becoming very well known as both her sons and daughters gain praise across the nation. A 0065 x Primo bred heifer was a favorite all summer and fall with Baxter Blair on the halter. A Charlo son, Blair's Charlo 790C, has been used with great success in our AI program and was a high seller in our 2017 bull sale. These five (5) sons will be the kind to raise efficient cattle with performance and great udders.

LOT 38

• BBC 342F • Apr. 10, 2018 • 2049312
• BW: 79 lbs • ADJ WW: 653 lbs

BLAIR'S **SANTANA** 342F (RC)

RED TER-RON PARKER 34A
RED TER-RON **SANTANA 73C**
RED TER-RON BRANDY 162Y

DUFF BASIC INSTINCT 6501
RSKY 6540 MS INSTINCT 0065
RSKY 0108 MS MAGICIAN 6540

TER-RON PARK PLACE 18Y
RED TER-RON DIAMOND MIST 164Y
RED U-2 BIG LEAGUE 544R
RED TER-RON BRANDY 211M

O C C MISSING LINK 830M
O C C DIXIE ERICA 814G
O C C MAGICIAN 888M
JAUER ANCHOR 3002 0108

LOTS 38 - 42

Full Siblings

CE	BW	WW	YW	MILK	TM
••	2.8	44	73	18	40

LOT **39**

• BBC 351F • Apr. 13, 2018 • 2049289
 • BW: 76 lbs • ADJ WW: 631 lbs

BLAIR'S **SANTANA** 351F (RC)

RED TER-RON SANTANA 73C X RSKY 6540 MS INSTINCT 0065

CE	BW	WW	YW	MILK	TM
••	2.8	44	73	18	40

LOT **40**

• BBC 353F • Apr. 13, 2018 • 2049434
 • BW: 77 lbs • ADJ WW: 636 lbs

BLAIR'S **SANTANA** 353F (RC)

RED TER-RON SANTANA 73C X RSKY 6540 MS INSTINCT 0065

CE	BW	WW	YW	MILK	TM
••	2.8	44	73	18	40

LOT **41**

• BBC 356F • Apr. 14, 2018 • 2049435
 • BW: 77 lbs • ADJ WW: 666 lbs

BLAIR'S **SANTANA** 356F (RC)

RED TER-RON SANTANA 73C X RSKY 6540 MS INSTINCT 0065

CE	BW	WW	YW	MILK	TM
••	2.8	44	73	18	40

LOT **42**

• BBC 363F • Apr. 16, 2018 • 2049334
 • BW: 75 lbs • ADJ WW: 656 lbs

BLAIR'S **SANTANA** 363F (RC)

RED TER-RON SANTANA 73C X RSKY 6540 MS INSTINCT 0065

CE	BW	WW	YW	MILK	TM
••	2.8	44	73	18	40



Blair's Instinct 791C
 RSKY 6540 Ms Instinct 0065 Daughter



Baxter Blair showing an 0065 Daughter

Blackbird



Duff EB 692 Blackbird 0256

I think the picture of Duff EB 692 Blackbird 0256 might say it all. Stay tuned for more news on Blackbird 0256 offspring in the future. Lots of calving ease in these sons and they will raise the efficient kind.



LOT 43

• BBC 321F • Apr. 6, 2018 • 2067158
• BW: 84 lbs • ADJ WW: 665 lbs

BLAIR'S **TRUMP** 321F (RC)

RED SOO LINE POWER EYE 161X
RED DAMAR TRUMP C512
RED DAMAR OH BABY W168

DUFF E BLAST 8138
DUFF EB 692 BLACKBIRD 0256
DUFF NL 1T2 BLACKBIRD 692

RED COCKBURN RIBEYE 308U
RED TR LYNN 301R
RED FINE LINE MULBERRY 26P
RED T-S OLIVIA 706P

DUFF NEW ATTRACTION 6110
DUFF EMB814G DIXIE ERICA 624
DCC NEW LOOK 101
R T R BLACKBIRD 1T2

CE	BW	WW	YW	MILK	TM
••	0.6	33	55	20	36

LOT 44

• BBC 325F • Apr. 8, 2018 • 2067159
• BW: 77 lbs • ADJ WW: 697 lbs

BLAIR'S **TRUMP** 325F (RC)

RED SOO LINE POWER EYE 161X
RED DAMAR TRUMP C512
RED DAMAR OH BABY W168

DUFF E BLAST 8138
DUFF EB 692 BLACKBIRD 0256
DUFF NL 1T2 BLACKBIRD 692

RED COCKBURN RIBEYE 308U
RED TR LYNN 301R
RED FINE LINE MULBERRY 26P
RED T-S OLIVIA 706P

DUFF NEW ATTRACTION 6110
DUFF EMB814G DIXIE ERICA 624
DCC NEW LOOK 101
R T R BLACKBIRD 1T2

CE	BW	WW	YW	MILK	TM
••	0.6	33	55	20	36

LOT 45

• BBC 337F • Apr. 9, 2018 • 2071997
• BW: 78 lbs • ADJ WW: 647 lbs

BLAIR'S **BINGO** 337F (RC)

RED RINGSTEAD KARGO 215U
RED BLAIR'S BINGO 581B
RED WSF MS YANKEE 13T 12W

DUFF E BLAST 8138
DUFF EB 692 BLACKBIRD 0256
DUFF NL 1T2 BLACKBIRD 692

RED RINGSTEAD KARGO 107M
RED RINGSTEAD MS EQUAL 589P
RED BRYLOR/WSP KARWEIK 1P
RED FINE LINE YANKEE 13T

DUFF NEW ATTRACTION 6110
DUFF EMB814G DIXIE ERICA 624
DCC NEW LOOK 101
R T R BLACKBIRD 1T2

CE	BW	WW	YW	MILK	TM
•••	1.6	41	64	21	42

LOT 46

• BBC 338F • Apr. 10, 2018 • 2071699
• BW: 89 lbs • ADJ WW: 663 lbs

BLAIR'S **BINGO** 338F (RC)

RED RINGSTEAD KARGO 215U
RED BLAIR'S BINGO 581B
RED WSF MS YANKEE 13T 12W

DUFF E BLAST 8138
DUFF EB 692 BLACKBIRD 0256
DUFF NL 1T2 BLACKBIRD 692

RED RINGSTEAD KARGO 107M
RED RINGSTEAD MS EQUAL 589P
RED BRYLOR/WSP KARWEIK 1P
RED FINE LINE YANKEE 13T

DUFF NEW ATTRACTION 6110
DUFF EMB814G DIXIE ERICA 624
DCC NEW LOOK 101
R T R BLACKBIRD 1T2

CE	BW	WW	YW	MILK	TM
•••	1.6	41	64	21	42

LOT 47

• BBC 335F • Apr. 9, 2018 • 2085112
• BW: 87 lbs • ADJ WW: 691 lbs

BLAIR'S **RECKONING** 335F (RC)

RED U-2 RECON 192Y
RED U-2 RECKONING 149A
RED U-2 ANEXA 271Y

DUFF E BLAST 8138
DUFF EB 692 BLACKBIRD 0256
DUFF NL 1T2 BLACKBIRD 692

RED BRYLOR WEST JET 69W
RED U-2 LARKABA 8133U
RED HOWE MAGNUM 169W
RED U-2 ANEXA 333N

DUFF NEW ATTRACTION 6110
DUFF EMB814G DIXIE ERICA 624
DCC NEW LOOK 101
R T R BLACKBIRD 1T2

CE	BW	WW	YW	MILK	TM
••	2.0	37	66	29	47

CHECK OUT THE

*Platinum
Bull
Warranty*

ON PAGE 3



- A definite sale feature
- Soft made, big hipped, with that extra dimension through his middle third
- Outcross genetics
- Dam, 53D, is a beautiful young female with a flawless udder. Her 2019 Knight Shade bull calf is quite possibly the best in the pen.

LOT 48

• CCCJ 94F • Feb. 2, 2018 • 2052567
 • BW: 76 lbs • ADJ WW: 767 lbs

CCCJ **FORTUNATE** 94F

MC CUMBER FORTUNATE 307
MC CUMBER 307 FORTUNATE 5156
 MISS WIX 2003 OF MC CUMBER

SINCLAIR FORTUNATE SON
 MISS WIX 9122 OF MC CUMBER
 O C C TREMENDOUS 619T
 MISS WIX 2022 HC MC CUMBER

KOUPAL ADVANCE 28
SMW FOREVER LADY 53D
 REMITALL WEST FOREVER LADY 29B

KOUPAL JUNEAU 797
 KOUPAL EBONETTE 734
 HF KODIAK 5R
 REMITALL W FOREVER LADY 79X

CE	BW	WW	YW	MILK	TM
•••	0.1	56	94	24	52

LOT 49

• CCCJ 6F • Feb. 4, 2018 • 2054978
 • BW: 100 lbs • ADJ WW: 758 lbs

CCCJ **RAILWAY** 6F

SOO LINE MOTIVE 9016
SOO LINE LOCOMOTIVE 1403
 SHADY BROOK EVERENTENSE 2039

HF KODIAK 5R
 TLA BEAUTY 5R
 S A V FINAL ANSWER 0035
 SCR EVERELDA ENTENSE 748

S A V BRAND NAME 9115
CCCJ ROSEBUD 8A
 SOO LINE ROSEBUD 0013

S A V BISMARCK 5682
 S A V BLACKCAP MAY 5530
 HF KODIAK 5R
 SOO LINE ROSEBUD 8210

CE	BW	WW	YW	MILK	TM
•	4.2	59	101	22	52



- If you are looking to add some pounds to your calf crop then this bull is the one for you
- Extremely long sided, powerful bull, who moves like a cat
- Dam also has a yearling bull in the sale Lot 54
- Maternal brother sold in last year's sale to Tica Ranches

LOT 50

• CCCJ 16F • Mar. 6, 2018 • 2041245
 • BW: 95 lbs • ADJ WW: 661 lbs

CCCJ PARAMOUNT 16F

S A V INTERNATIONAL 2020
CCCJ PENDLETON 12C
 SOO LINE ROSEBUD 0013

S A V BISMARCK 5682
CCCJ BARANDA 4Z
 MVF BARANDA 50X

S A V HARVESTOR 0338
 S A V EMBLYNETTE 5483
 HF KODIAK 5R
 SOO LINE ROSEBUD 8210

G A R GRID MAKER
 S A V ABIGALE 0451
 HF TIGER 5T
 MVF BARANDA 154U

CE	BW	WW	YW	MILK	TM
•	3.2	49	82	20	45

- A sound footed, easy fleshing Pendleton son. Pendleton was a bull I kept for my own use, whose dam, 13X, is my top producing female. She is the maternal grandmother to two of my bulls in this year's sale and the dam of one other
- This bulls dam, 4Z, is a an exceptional Bismarck daughter with a perfect udder
- Tremendous maternal strength in this bull

LOT 51

• CCCJ 19F • Mar. 12, 2018 • 2041255
 • BW: 92 lbs • ADJ WW: 750 lbs

CCCJ DENVER 19F

S A V INTERNATIONAL 2020
CCCJ PENDLETON 12C
 SOO LINE ROSEBUD 0013

RING CREEK BIG PAYOUT 41Z
MVF DAISY 18B
 MVF DAISY 252X

S A V HARVESTOR 0338
 S A V EMBLYNETTE 5483
 HF KODIAK 5R
 SOO LINE ROSEBUD 8210

CONNEALY CONSENSUS 7229
 LADY OF RING CREEK 10W
 NORSEMAN FRONTIER 2'07
 MVF DAISY 17E

CE	BW	WW	YW	MILK	TM
•	3.3	53	90	23	50

- Another really good strong deep sided, Pendleton son who stands on a perfect foot
- All these two year old bulls were backgrounded on a grower ration and then sent to grass for the summer. These bulls will work with no meltdown
- Dam, 18B, is a powerful female and has sons working for Byron Toth and Tica Ranches



LOT 52

• CCCJ 1G • Feb. 3, 2019 • 2108407
 • BW: 88 lbs • Sept. 15 WT: 790 lbs

CCCJ BROWNSTONE 1G

COLEMAN CHARLO 0256
COLEMAN BRAVO 6313
 COLEMAN DONNA 714

S A NEUTRON 377
STRYKER TINGE 344X
 STRYKER EVENING TINGE 113R

O C C PAXTON 730P
 BOHI ABIGALE 6014
 CONNEALY ONWARD
 COLEMAN DONNA 386

S A F NEUTRON
 S A QUEEN SUSAN 102
 STRYKER POPEYE 5M
 STRYKER TINGE 63M

CE	BW	WW	YW	MILK	TM
••	0.8	51	95	18	44

- These three yearling bulls are all sired by the \$450,000 Coleman Bravo, a bull that Larry Coleman calls, the best we have ever raised
- I am really impressed by the quality of these Bravo calves and used him in my AI program again in 2019
- The disposition on all three of these yearlings is second to none





- This bull's mother is one of my premier cows. She works with everything she is bred to. We are using a son of hers, Pendleton, who is the sire of two of my two-year olds. Some real strong maternal genetics here and top it off with the incomparable Coleman Donna 714 on the paternal side of this pedigree
- A moderate framed bull with a great muscle pattern

LOT 53

• CCCJ 2G • Feb. 3, 2019 • 2123655
 • BW: 72 lbs • Sept. 15 WT: 765 lbs
 • TWIN

CCCJ **APPLAUSE 2G**

COLEMAN CHARLO 0256
COLEMAN BRAVO 6313
 COLEMAN DONNA 714

HF KODIAK 5R
SOO LINE ROSEBUD 0013
 SOO LINE ROSEBUD 8210

O C C PAXTON 730P
 BOHI ABIGALE 6014
 CONNEALY ONWARD
 COLEMAN DONNA 386

SANDY BAR ADVANTAGE 43M
 WILBAR RUBY 955N
 SOO LINE YELLOWSTONE 6344
 TLA ROSEBUD 4R

CE	BW	WW	YW	MILK	TM
••	-1.9	49	86	23	48

LOT 54

• CCCJ 7G • Feb. 15, 2019 • 2108397
 • BW: 93 lbs • Sept. 15 WT: 800 lbs

CCCJ **APPLAUSE 7G**

COLEMAN CHARLO 0256
COLEMAN BRAVO 6313
 COLEMAN DONNA 714

S A V BRAND NAME 9115
CCCJ ROSEBUD 8A
 SOO LINE ROSEBUD 0013

O C C PAXTON 730P
 BOHI ABIGALE 6014
 CONNEALY ONWARD
 COLEMAN DONNA 386

S A V BISMARK 5682
 S A V BLACKCAP MAY 5530
 HF KODIAK 5R
 SOO LINE ROSEBUD 8210

CE	BW	WW	YW	MILK	TM
•	2.7	60	107	21	51



- A long sided, free wheeling Bravo son here, that will add some pounds to your calf crop
- Dam, 8A, has a Locomotive two-year old two-year old in the sale and is a daughter of 13X, the dam of Lot 53
- Some real strong proven genetics on both sides of this bull's pedigree



Red WCR Miss Cora De 867 Z

Cora has become a name in the Red Angus breed that conjures up thoughts of excellence. We have intentionally added two Cora donors to our program and we are proud to offer this group of seven (7) Cora 867Z sons. Check out the consistency in the type, calving ease and performance in her sons. Lots of royalty in the pedigrees.



Red Wilbar Cora 443P



LOT 55

• BBC 655F • Mar. 14, 2018 • 2051259
 • BW: 95 lbs • ADJ WW: 711 lbs

RED BLAIR'S **RECKONING** 655F

RED U-2 RECON 192Y
RED U-2 RECKONING 149A
 RED U-2 ANEXA 271Y

RED LAZY MC CC DETOUR 2W
RED WCR MISS CORA DE 867Z
 RED WILBAR CORA 443P

RED BRYLOR WEST JET 69W
 RED U-2 LARKABA 8133U
 RED HOWE MAGNUM 169W
 RED U-2 ANEXA 333N

RED RMJ REDMAN 1T
 RED LAZY MC BESS 12S
 RED TER-RON TORNADO 157M
 RED HEAD CORA 159L

US BOLT EPDS

CE	BW	WW	YW	MILK	TM
••	-1.1	50	82	28	

LOT 56

• BBC 665F • Mar. 16, 2018 • 2051276
 • BW: 85 lbs • ADJ WW: 631 lbs

RED BLAIR'S **RECKONING** 665F

RED U-2 RECON 192Y
RED U-2 RECKONING 149A
 RED U-2 ANEXA 271Y

RED LAZY MC CC DETOUR 2W
RED WCR MISS CORA DE 867Z
 RED WILBAR CORA 443P

RED BRYLOR WEST JET 69W
 RED U-2 LARKABA 8133U
 RED HOWE MAGNUM 169W
 RED U-2 ANEXA 333N

RED RMJ REDMAN 1T
 RED LAZY MC BESS 12S
 RED TER-RON TORNADO 157M
 RED HEAD CORA 159L

US BOLT EPDS

CE	BW	WW	YW	MILK	TM
••	-1.1	50	82	28	





Lot 58

LOT 57

- BBC 671F • Mar. 17, 2018 • 2051264
- BW: 94 lbs • ADJ WW: 684 lbs

RED BLAIR'S **RECKONING** 671F

RED U-2 RECKONING 149A X RED WCR MISS CORA DE 867Z

US BOLT EPDS

CE	BW	WW	YW	MILK	TM
••	-1.1	50	82	28	

LOT 58

- BBC 677F • Mar. 19, 2018 • 2051278
- BW: 86 lbs • ADJ WW: 698 lbs

RED BLAIR'S **RECKONING** 677F

RED U-2 RECKONING 149A X RED WCR MISS CORA DE 867Z

US BOLT EPDS

CE	BW	WW	YW	MILK	TM
••	-1.1	50	82	28	

LOTS 55 - 59

Full Siblings

LOT 59

- BBC 687F • Mar. 21, 2018 • 2051263
- BW: 86 lbs • ADJ WW: 614 lbs

RED BLAIR'S **RECKONING** 687F

RED U-2 RECKONING 149A X RED WCR MISS CORA DE 867Z

US BOLT EPDS

CE	BW	WW	YW	MILK	TM
••	-1.1	50	82	28	



Lot 61

LOT 60

• BBC 664F • Mar. 16, 2018 • 2067059
 • BW: 86 lbs • ADJ WW: 732 lbs

RED BLAIR'S **BINGO** 664F

RED RINGSTEAD KARGO 215U
 RED BLAIR'S BINGO 581B
 RED WSF MS YANKEE 13T 12W

RED RINGSTEAD KARGO 107M
 RED RINGSTEAD MS EQUAL 589P
 RED BRYLOR/WSP KARWEIK 1P
 RED FINE LINE YANKEE 13T

RED LAZY MC CC DETOUR 2W
 RED WCR MISS CORA DE 867Z
 RED WILBAR CORA 443P

RED RMJ REDMAN 1T
 RED LAZY MC BESS 12S
 RED TER-RON TORNADO 157M
 RED HEAD CORA 159L

US BOLT EPDS

CE	BW	WW	YW	MILK	TM
•••	-1.1	52	82	24	

LOT 61

• BBC 623F • Mar. 10, 2018 • 2067056
 • BW: 71 lbs • ADJ WW: 612 lbs

RED BLAIR'S **BINGO** 623F

RED RINGSTEAD KARGO 215U
 RED BLAIR'S BINGO 581B
 RED WSF MS YANKEE 13T 12W

RED RINGSTEAD KARGO 107M
 RED RINGSTEAD MS EQUAL 589P
 RED BRYLOR/WSP KARWEIK 1P
 RED FINE LINE YANKEE 13T

RED LAZY MC CC DETOUR 2W
 RED WCR MISS CORA DE 867Z
 RED WILBAR CORA 443P

RED RMJ REDMAN 1T
 RED LAZY MC BESS 12S
 RED TER-RON TORNADO 157M
 RED HEAD CORA 159L

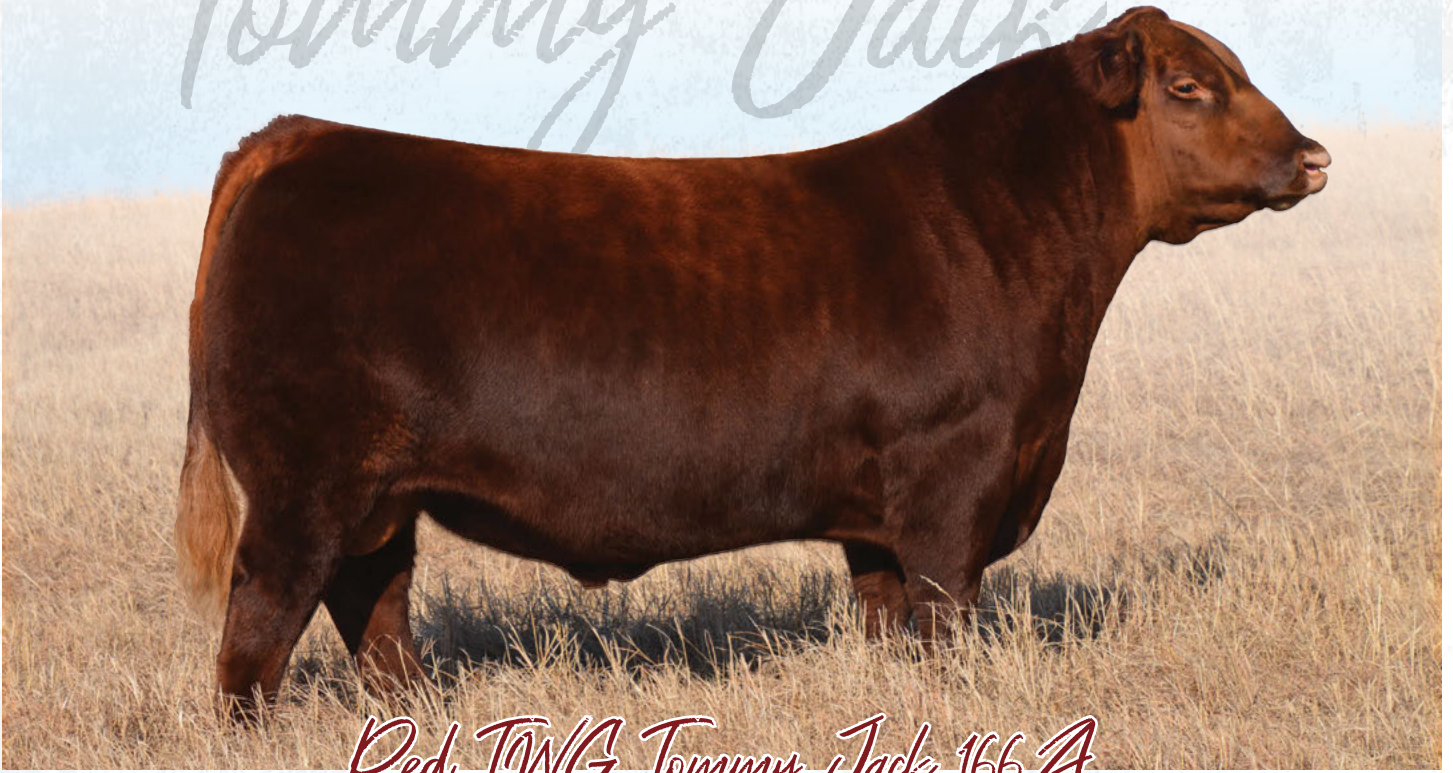
US BOLT EPDS

CE	BW	WW	YW	MILK	TM
•••	-1.1	52	82	24	



Red Blair's Bingo 581B

Tommy Jack



Red TWG Tommy Jack 166A

We are always looking for the next red herd sire and when we saw TWG Tommy Jack 166A in Emporia, KS on display, we knew we needed to figure out how to own him. The problem was Brylor Ranch was also there and Bryan had the same glimmer in his eye. We partnered up on Tommy Jack and we have been very pleased with the results. Tommy Jack has excellent calving ease and we are very pleased with the performance in the calves. We needed a sire to follow in the footsteps of Red Ringstead Kargo 215U in our program and Tommy Jack has definitely done that. Tommy Jack is the “keep every female” kind of sire.





LOT 62

• BBC 575F • Mar. 3, 2018 • 2033472
 • BW: 83 lbs • ADJ WW: 735 lbs

RED BLAIR'S **TOMMY JACK** 575F

RED SIX MILE GAME FACE 164Y
RED TWG TOMMY JACK 166A
 RED DAMAR PASSION X166

RED VGW GAME PLAN 816
 RED SIX MILE LAKOTO 35W
 RED FINE LINE MULBERRY 26P
 RED DFRA JOPLIN 501L

RED HXC BIG IRON 0024X
RED DAMAR JULIANNA D077
 RED DAMAR JULIANNA Z031

RED BECKTON NEBULA P P707
 RED HXC 825U
 RED BECKTON JULIAN GG B571
 RED MESSMER PANDORA M186

US BOLT EPDS

CE	BW	WW	YW	MILK	TM
•••	0.4	66	104	21	



LOT 63

• BBC 509F • Feb. 6, 2018 • 2027658
 • BW: 87 lbs • ADJ WW: 762 lbs

RED BLAIR'S **TOMMY JACK** 509F

RED SIX MILE GAME FACE 164Y
RED TWG TOMMY JACK 166A
 RED DAMAR PASSION X166

RED VGW GAME PLAN 816
 RED SIX MILE LAKOTO 35W
 RED FINE LINE MULBERRY 26P
 RED DFRA JOPLIN 501L

RED WPRA LEGACY A-314
BLAIR'S UPTOWN GIRL 346D
 BLAIRS UPTOWN GIRL 105X

RED LAZY MC EYE SPY 64Y
 RED WPRA EVERLEDA ENTENSE 610
 RED FINE LINE MULBERRY 26P
 NLC UPTOWN GIRL 19U

US BOLT EPDS

CE	BW	WW	YW	MILK	TM
•	2.3	73	108	24	



LOT 64

• BBC 508F • Feb. 6, 2018 • 2027657
 • BW: 95 lbs • ADJ WW: 648 lbs

RED BLAIR'S **TOMMY JACK** 508F

RED SIX MILE GAME FACE 164Y
RED TWG TOMMY JACK 166A
 RED DAMAR PASSION X166

RED VGW GAME PLAN 816
 RED SIX MILE LAKOTO 35W
 RED FINE LINE MULBERRY 26P
 RED DFRA JOPLIN 501L

RED RINGSTEAD KARGO 215U
RED BLAIR'S MONIQUE 584D
 RED TOWAW MONIQUE 2K

RED RINGSTEAD KARGO 107M
 RED RINGSTEAD MS EQUAL 589P
 RED BJR JR 107
 RED TWIN D MONIQUE 811H

US BOLT EPDS

CE	BW	WW	YW	MILK	TM
•	1.8	60	88	20	

Owned with John and Joy Haycock, Australia

LOT 65

• BBC 507F • Feb. 6, 2018 • 2027656
• BW: 82 lbs • ADJ WW: 725 lbs

RED BLAIR'S **TOMMY JACK** 507F

RED SIX MILE GAME FACE 164Y
RED TWG TOMMY JACK 166A
RED DAMAR PASSION X166

RED VGW GAME PLAN 816
RED SIX MILE LAKOTO 35W
RED FINE LINE MULBERRY 26P
RED DFRA JOPLIN 501L

RED TAYLOR'S COWBOY 43B
RED WILDMAN LARKABA 609D
RED WILDMAN LARKABA 027X

RED WILBAR COWBOY COUNTRY 901Z
RED TAYLOR'S ROSALEE 3Y
RED WILDMAN SOLSTICE 805U
RED WILDMAN LARKABA 601S

US BOLT EPDS

CE	BW	WW	YW	MILK	TM
••	1.5	64	98	26	



LOT 66

• BBC 715F • Mar. 29, 2018 • 2056866
• BW: 81 lbs • ADJ WW: 605 lbs

RED BLAIR'S **TOMMY JACK** 715F

RED SIX MILE GAME FACE 164Y
RED TWG TOMMY JACK 166A
RED DAMAR PASSION X166

RED VGW GAME PLAN 816
RED SIX MILE LAKOTO 35W
RED FINE LINE MULBERRY 26P
RED DFRA JOPLIN 501L

RED SOO LINE POWER EYE 161X
RED BLAIR'S MABEL 556C
RED SOUTHLANS MABEL 36S

RED COCKBURN RIBEYE 308U
RED TR LYNN 301R
RED NORTHLINE EQUALIZER 189N
RED SOUTHLAND MABEL 61P

US BOLT EPDS

CE	BW	WW	YW	MILK	TM
•••	0	52	80	16	

LOT 67

• BBC 519F • Feb. 13, 2018 • 2027663
• BW: 80 lbs • ADJ WW: 711 lbs

RED BLAIR'S **TOMMY JACK** 519F

RED SIX MILE GAME FACE 164Y
RED TWG TOMMY JACK 166A
RED DAMAR PASSION X166

RED VGW GAME PLAN 816
RED SIX MILE LAKOTO 35W
RED FINE LINE MULBERRY 26P
RED DFRA JOPLIN 501L

RED SSS AMBUSH 771X
RED BLAIR'S SUGARLAND 55D
RED BLAIRS SUGARLAND 139Z

RED FLYING K AMBUSH 121U
RED SSS JOE 369S
RED JORD REDWOOD 72X
RED BLAIR'S SUGRLAND 5U

US BOLT EPDS

CE	BW	WW	YW	MILK	TM
•••	0	58	87	24	

LOT 68

• BBC 518F • Feb. 12, 2018 • 2033471
• BW: 70 lbs • ADJ WW: 729 lbs

RED BLAIR'S **TOMMY JACK** 518F

RED SIX MILE GAME FACE 164Y
RED TWG TOMMY JACK 166A
RED DAMAR PASSION X166

RED VGW GAME PLAN 816
RED SIX MILE LAKOTO 35W
RED FINE LINE MULBERRY 26P
RED DFRA JOPLIN 501L

RED NBAR HAMLEY S913
RED LAZY MS DORETTA 6203-506ET
RED UBAR COPPERQUEEN 506

RED PIE BILLINGS 487
RED NBAR KELLY 913
RED UBAR HIGH CAPACITY 224
RED FORSTER COPPRQUEEN 7168

US BOLT EPDS

CE	BW	WW	YW	MILK	TM
•••	0.5	58	83	20	

LOT 69

• BBC 684F • Mar. 20, 2018 • 2050681
• BW: 72 lbs • ADJ WW: 700 lbs

RED BLAIR'S **TOMMY JACK** 684F

RED SIX MILE GAME FACE 164Y
RED TWG TOMMY JACK 166A
RED DAMAR PASSION X166

RED VGW GAME PLAN 816
RED SIX MILE LAKOTO 35W
RED FINE LINE MULBERRY 26P
RED DFRA JOPLIN 501L

RED CORNER CREEK CASH 2R
RED BLAIR'S CHETA 70C
RED JCC CHETA 50P

RED PIE ATLANTIC 2204
RED NORTHLINE PRINCESS 59L
RED TER-RON MAMBO 28K
RED JCC CHARO 19K

US BOLT EPDS

CE	BW	WW	YW	MILK	TM
•••	-0.9	59	87	18	

LOT 70

• BBC 580F • Mar. 4, 2018 • 2052296
• BW: 91 lbs • ADJ WW: 715 lbs

RED BLAIR'S **TOMMY JACK** 580F

RED SIX MILE GAME FACE 164Y
RED TWG TOMMY JACK 166A
RED DAMAR PASSION X166

RED VGW GAME PLAN 816
RED SIX MILE LAKOTO 35W
RED FINE LINE MULBERRY 26P
RED DFRA JOPLIN 501L

RED HAYCOW CUTTING EDGE 055
RED BLAIR'S COPPER LADY 831C
RED TOWAW COPPER LADY 8T

LAFILNS CUTTING EDGE 2075
RED HAYCOW 370 PRINCESS 5002
RED REDRICH NIGHT 14N
RED TOWAW COPPER LADY 107P

US BOLT EPDS

CE	BW	WW	YW	MILK	TM
•	2.1	61	91	21	

Kargo



Red Ringstead Kargo 215U

Red Ringstead Kargo 215U is one of our greatest success stories. He has out performed any expectations we could have placed on him. The sons are highly sought after by commercial operators and the females are renowned across North America for their ability to influence programs in a highly favourable manner. These will be some of our last sons to sell as semen is very limited in Canada.



BBC 44Z
Kargo Daughter



BBC 522C
Kargo Daughter



LOT 71

• BBC 579F • Mar. 4, 2018 • 2040661
 • BW: 78 lbs • ADJ WW: 623 lbs

RED BLAIR'S **KARGO** 579F

RED RINGSTEAD KARGO 107M
RED RINGSTEAD KARGO 215U
 RED RINGSTEAD MS EQUAL 589P

 RED SOUTHLAND ENERGIZER 100R
RED BLAIR'S LARKABA 17T
 RED BAR-E-L LARKABA 23R

RED COMPASS KARGO 83K
 RED GET-A-LONG MRS. YOUNG 095
 RED SSS YUKON 440K
 RED SSS MISS EQUAL 495G

 RED NORTHLINE EQUALIZER 189N
 RED SOUTHLAND HEATHER 131N
 RED YY RAMBLER 322N
 RED BAR-E-L LARKABA 72N

US BOLT EPDS

CE	BW	WW	YW	MILK	TM
••	-0.4	48	72	21	

LOT 72

• BBC 278F • Mar. 2, 2018 • 2041507
 • BW: 94 lbs • ADJ WW: 686 lbs

RED BLAIR'S **KARGO** 278F

RED RINGSTEAD KARGO 107M
RED RINGSTEAD KARGO 215U
 RED RINGSTEAD MS EQUAL 589P

 RED TER-RON TORNADO 157M
RED WILBAR CORA 443P
 RED HEAD CORA 159L

RED COMPASS KARGO 83K
 RED GET-A-LONG MRS. YOUNG 095
 RED SSS YUKON 440K
 RED SSS MISS EQUAL 495G

 RED TER-RON MAMBO 28K
 RED BLUE SPRUCE LARKABA 157A
 RED TOWAW ZAMA 148F
 RED CUMNOCK CORA 423B

US BOLT EPDS

CE	BW	WW	YW	MILK	TM
••	-1.1	53	81	24	





Red Ter-Ron Santana 73C

Red Ter-Ron Santana 73C was purchased together with Santiago Debernardi from Argentina for the purpose of raising moderate made, highly efficient cattle. He has done an excellent job on both the bulls and females and our bred heifer pen is full of Santana daughters. These sons will have a balance of calving ease and performance. Look through the dams of these sons and you will find our very best dams like Yankee 12W, Banberry 238R, Bobbie 27C, Nice 25Y and Monique 175A.

LOT 73

- BBC 46F • Apr. 11, 2018 • 2049305
- BW: 84 lbs • ADJ WW: 735 lbs

RED BLAIR'S **SANTANA** 46F

- RED TER-RON PARKER 34A
- RED TER-RON SANTANA 73C
- RED TER-RON BRANDY 162Y

- TER-RON PARK PLACE 18Y
- RED TER-RON DIAMOND MIST 164Y
- RED U-2 BIG LEAGUE 544R
- RED TER-RON BRANDY 211M

- RED TOWAW INDEED 104H
- RED BAR-E-L AB MEG 169Z
- RED BAR-E-L MEG 85N

- RED CC EXPANSION 5E
- RED TOWAW MOLLY 67C
- RED YY RED KNIGHT 640F
- RED BAR-E-L MEG 035G

US BOLT EPDS

CE	BW	WW	YW	MILK	TM
••	0.7	53	79	18	



Red BAR-E-L AB Meg 169Z

LOT 74

- BBC 554F • Feb. 26, 2018 • 2066564
- BW: 76 lbs • ADJ WW: 725 lbs

RED BLAIR'S **SANTANA** 554F

- RED TER-RON PARKER 34A
- RED TER-RON SANTANA 73C
- RED TER-RON BRANDY 162Y

- TER-RON PARK PLACE 18Y
- RED TER-RON DIAMOND MIST 164Y
- RED U-2 BIG LEAGUE 544R
- RED TER-RON BRANDY 211M

- RED BIEBER HARD DRIVE Y120
- RED NSFR MOONBEAM C12
- RED PFFR MS MOONBEAM 3312

- RED LACY GOLD BAR 8123
- RED BIEBER LAURA 158W
- RED BADLANDS CUT ABOVE 012
- RED PFFR MS MOONBEAM 151

CE	BW	WW	YW	MILK	TM
•••	0.7	45	74	15	38

LOT 75

- BBC 594F • Mar. 6, 2018 • 2053026
- BW: 90 lbs • ADJ WW: 711 lbs

BLAIR'S **SANTANA** 594F

- RED TER-RON PARKER 34A
- RED TER-RON SANTANA 73C
- RED TER-RON BRANDY 162Y

- TER-RON PARK PLACE 18Y
- RED TER-RON DIAMOND MIST 164Y
- RED U-2 BIG LEAGUE 544R
- RED TER-RON BRANDY 211M

- RINGSTEAD DAWSON 717T
- BLAIRS RUBA 342Y
- RED BRYLOR G K RUBA 7T

- RED RINGSTEAD DAWSON 209R
- GET-A-LONG ELBA 705
- RED FINE LINE MULBERRY 26P
- RED HOWE MS. RUBA DDH 7H

CE	BW	WW	YW	MILK	TM
•	2.7	42	70	20	41



LOT 76

• BBC 531F • Feb. 20, 2018 • 2027665
• BW: 97 lbs • ADJ WW: 618 lbs

RED BLAIR'S **SANTANA** 531F

RED TER-RON PARKER 34A
RED TER-RON SANTANA 73C
RED TER-RON BRANDY 162Y

RED HAYCOW CUTTING EDGE 055
RED BLAIR'S MONIQUE 175A
RED TOWAW MONIQUE 2K

TER-RON PARK PLACE 18Y
RED TER-RON DIAMOND MIST 164Y
RED U-2 BIG LEAGUE 544R
RED TER-RON BRANDY 211M

LAFLENS CUTTING EDGE 2075
RED HAYCOW 370 PRINCESS 5002
RED BJR JR 107
RED TWIN D MONIQUE 811H

US BOLT EPDS

CE	BW	WW	YW	MILK	TM
•	2.1	54	80	18	

Owned with Goondoola Livestock, Australia

LOT 78

• BBC 276F • Mar. 1, 2018 • 2047829
• BW: 98 lbs • ADJ WW: 649 lbs

RED BLAIR'S **SANTANA** 276F

RED TER-RON PARKER 34A
RED TER-RON SANTANA 73C
RED TER-RON BRANDY 162Y

RED BRYLOR/WSP KARWEIK 1P
RED WSF MS YANKEE 13T 12W
RED FINE LINE YANKEE 13T

TER-RON PARK PLACE 18Y
RED TER-RON DIAMOND MIST 164Y
RED U-2 BIG LEAGUE 544R
RED TER-RON BRANDY 211M

RED NORTHLINE ROB ROY 122K
RED DMM MISS ESSENCE 58M
RED FINE LINE MULBERRY 26P
RED FINE LINE YANKEE 14R

US BOLT EPDS

CE	BW	WW	YW	MILK	TM
•	0.9	52	81	20	

LOT 77

• BBC 534F • Feb. 21, 2018 • 2027998
• BW: 70 lbs • ADJ WW: 647 lbs

RED BLAIR'S **SANTANA** 534F

RED TER-RON PARKER 34A
RED TER-RON SANTANA 73C
RED TER-RON BRANDY 162Y

RED TWIN HERITAGE HUSTLE 25A
RED TER-RON BOBBIE 27C
RED TER-RON BOBBIE 122X

TER-RON PARK PLACE 18Y
RED TER-RON DIAMOND MIST 164Y
RED U-2 BIG LEAGUE 544R
RED TER-RON BRANDY 211M

RED HOWE HUSTLE 13X
RED TWIN HERITAGE CHER 293S
RED THAT'LL DO UNBELIEVABLE 6U
RED TER-RON BOBBIE 93T

US BOLT EPDS

CE	BW	WW	YW	MILK	TM
•••	-0.4	54	82	16	

LOT 79

• BBC 280F • Mar. 15, 2018
• BW: 86 lbs • ADJ WW: 674 lbs

RED BLAIR'S **SANTANA** 280F

RED TER-RON PARKER 34A
RED TER-RON SANTANA 73C
RED TER-RON BRANDY 162Y

RED BRYLOR/WSP KARWEIK 1P
RED WSF MS YANKEE 13T 12W
RED FINE LINE YANKEE 13T

TER-RON PARK PLACE 18Y
RED TER-RON DIAMOND MIST 164Y
RED U-2 BIG LEAGUE 544R
RED TER-RON BRANDY 211M

RED NORTHLINE ROB ROY 122K
RED DMM MISS ESSENCE 58M
RED FINE LINE MULBERRY 26P
RED FINE LINE YANKEE 14R

CE	BW	WW	YW	MILK	TM
•	0.9	53	81	20	

LOT **80**

• BBC 550F • Feb. 25, 2018 • 2028007
 • BW: 85 lbs • ADJ WW: 694 lbs

BLAIR'S **SANTANA** 550F

RED TER-RON PARKER 34A
RED TER-RON SANTANA 73C
 RED TER-RON BRANDY 162Y

XO CROWFOOT 0102X
GOLDEN SUNSET PIEBIRD 3C
 RED OLE PIEBIRD 154X

TER-RON PARK PLACE 18Y
 RED TER-RON DIAMOND MIST 164Y
 RED U-2 BIG LEAGUE 544R
 RED TER-RON BRANDY 211M

RED CROWFOOT MOONSHINE 8081U
 XO CROWFOOT BLACKBIRD 8810U
 RED CROWFOOT OLE'S OSCAR 2042M
 RED OLE PIEBIRD 95U

CE	BW	WW	YW	MILK	TM
••	1.4	41	68	19	40

LOT **81**

• BBC 22F • Apr. 4, 2018 • 2053262
 • BW: 83 lbs • ADJ WW: 742 lbs

RED BLAIR'S **SANTANA** 22F

RED TER-RON PARKER 34A
RED TER-RON SANTANA 73C
 RED TER-RON BRANDY 162Y

RED CRESCENT CREEK FRCHIEF 75L
RED SOO LINE BANE BERRY 5238
 RED SOO MS BANE BERRY 3193

TER-RON PARK PLACE 18Y
 RED TER-RON DIAMOND MIST 164Y
 RED U-2 BIG LEAGUE 544R
 RED TER-RON BRANDY 211M

RED FORSTER CHIEF 7182ET
 RED CRESCENT CREEK DUCHESS 155
 RED BASIN SENSATION 702E
 RED SIX MILE BANE BERRY 362J

US BOLT EPDS					
CE	BW	WW	YW	MILK	TM
•••	-0.6	50	74	20	

LOT **82**

• BBC 40F • Apr. 9, 2018 • 2054552
 • BW: 78 lbs • ACT WW: 568 lbs

RED BLAIR'S **SANTANA** 40F

RED TER-RON PARKER 34A
RED TER-RON SANTANA 73C
 RED TER-RON BRANDY 162Y

RED WILBAR LATITUDE 235W
RED BLAIRS NICE 25Y
 RED JB WANNABE NICE 9084

TER-RON PARK PLACE 18Y
 RED TER-RON DIAMOND MIST 164Y
 RED U-2 BIG LEAGUE 544R
 RED TER-RON BRANDY 211M

RED TER-RON RELOAD 703T
 RED WILBAR LANA 346N
 RED YY SQUIRE 334N ET
 RED HAMCO VERY NICE 28N

US BOLT EPDS					
CE	BW	WW	YW	MILK	TM
•••	0.4	52	77	12	



Red Blairs Nice 25Y

LOT **83**

• BBC 643F • Mar. 12, 2018 • 2028377
 • BW: 88 lbs • ADJ WW: 692 lbs

RED BLAIR'S **SANTANA** 643F

RED TER-RON PARKER 34A
RED TER-RON SANTANA 73C
 RED TER-RON BRANDY 162Y

RED CORNER CREEK CASH 2R
RED KENRAY LAKOTO 30A
 RED AQUA HOLLOW LA SENZA 9R

TER-RON PARK PLACE 18Y
 RED TER-RON DIAMOND MIST 164Y
 RED U-2 BIG LEAGUE 544R
 RED TER-RON BRANDY 211M

RED PIE ATLANTIC 2204
 RED NORTHLINE PRINCESS 59L
 RED STEWART SENSATION 9L
 RED CUMNOCK LAKOTA 41G

US BOLT EPDS					
CE	BW	WW	YW	MILK	TM
••	1.3	60	90	13	

LOT **84**

• BBC 542F • Feb. 24, 2018 • 2028003
 • BW: 89 lbs • ADJ WW: 643 lbs

RED BLAIR'S **SANTANA** 542F

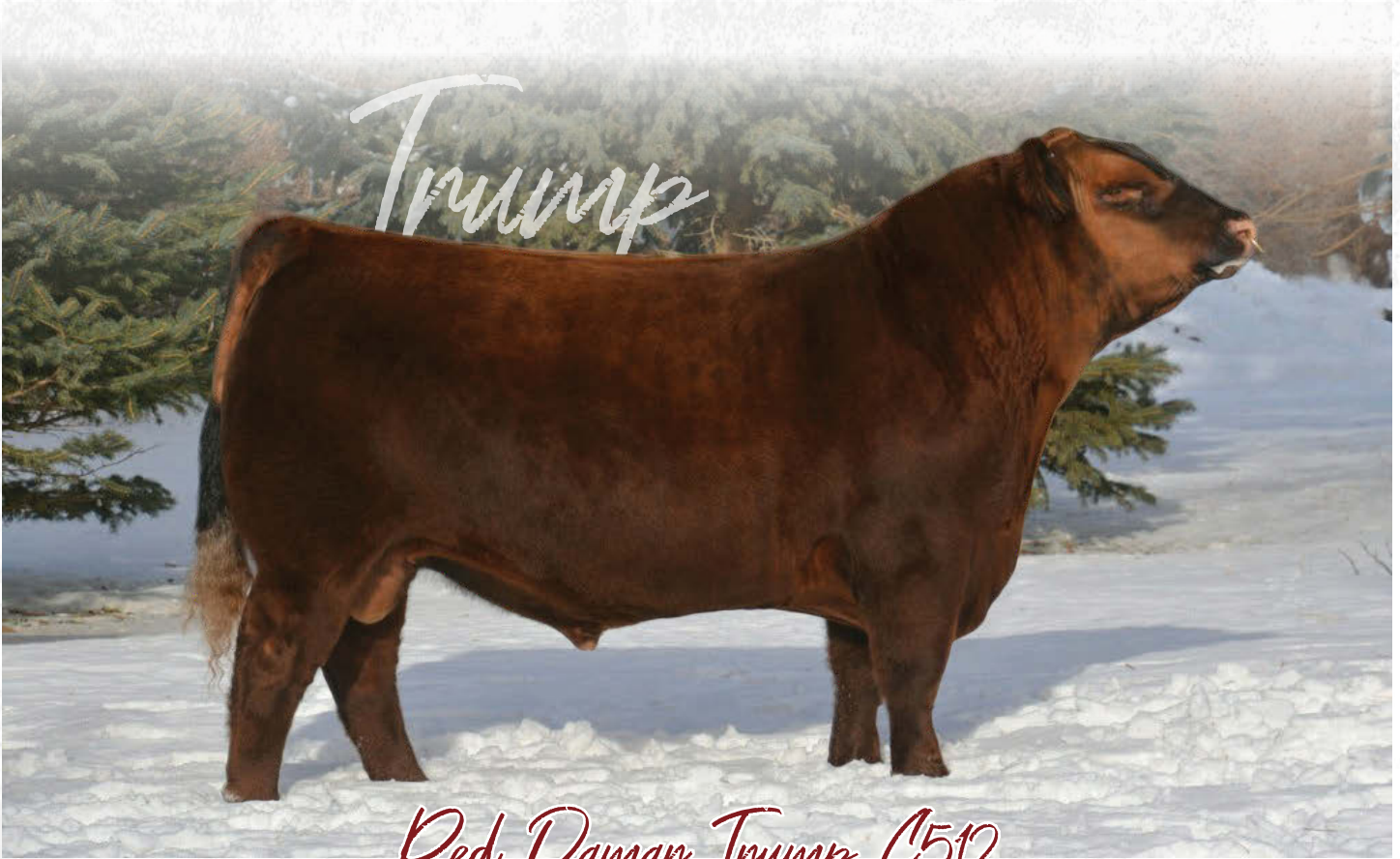
RED TER-RON PARKER 34A
RED TER-RON SANTANA 73C
 RED TER-RON BRANDY 162Y

RED WRIGHTS 832S IRON HIDE 4Z
RED BLAIR'S REBELLO 65C
 RED BLAIRS REBELLO 255Z

TER-RON PARK PLACE 18Y
 RED TER-RON DIAMOND MIST 164Y
 RED U-2 BIG LEAGUE 544R
 RED TER-RON BRANDY 211M

RED SIX MILE SAKIC 832S
 RED BWB FAYE 48N OF TREND
 RED BLAIR'S PREMONITION 209W
 RED JSTN REBELLO 1S

US BOLT EPDS					
CE	BW	WW	YW	MILK	TM
•	1.7	55	81	19	



Welcome to the first Damar Trump sons to sell in Canada. These are long made, powerful cow bulls that will add dimension to your calf crop. These sons come off some of our favourite females including Yankee 12W, Banberry 238R, Kuruba 2084Z and Lacey 9Z. We believe the size of the sire group speaks volumes about the predictability of the Trump genetics. Stop by and check out the Trump daughters at the ranch.



BBC 511G
Trump Daughter



BBC 602F
Trump Daughter



Lot 85

LOT 85

• BBC 607F • Mar. 8, 2018 • 2053263
 • BW: 94 lbs • ADJ WW: 648 lbs

RED BLAIR'S **TRUMP** 607F

RED SOO LINE POWER EYE 161X
 RED DAMAR TRUMP C512
 RED DAMAR OH BABY W168

RED COCKBURN RIBEYE 308U
 RED TR LYNN 301R
 RED FINE LINE MULBERRY 26P
 RED T-S OLIVIA 706P

RED CRESCENT CREEK FRCHIEF 75L
 RED SOO LINE BANE BERRY 5238
 RED SOO MS BANE BERRY 3193

RED FORSTER CHIEF 7182ET
 RED CRESCENT CREEK DUCHESS 155
 RED BASIN SENSATION 702E
 RED SIX MILE BANE BERRY 362J

US BOLT EPDS

CE	BW	WW	YW	MILK	TM
••	-1.8	46	72	25	



Red Blair's Baneberry 602F
 Full Sibling to 607F



Red Soo Line Baneberry 238R

LOT 86

- BBC 616F • Mar. 9, 2018 • 2102326
- BW: 98 lbs • ADJ WW: 680 lbs

RED BLAIR'S **TRUMP** 616F

RED SOO LINE POWER EYE 161X
 RED DAMAR TRUMP C512
 RED DAMAR OH BABY W168

RED COCKBURN RIBEYE 308U
 RED TR LYNN 301R
 RED FINE LINE MULBERRY 26P
 RED T-S OLIVIA 706P

RED BRYLOR/WSP KARWEIK 1P
 RED WSF MS YANKEE 13T 12W
 RED FINE LINE YANKEE 13T

RED NORTHLINE ROB ROY 122K
 RED DMM MISS ESSENCE 58M
 RED FINE LINE MULBERRY 26P
 RED FINE LINE YANKEE 14R

US BOLT EPDS

CE	BW	WW	YW	MILK	TM
•	-0.3	48	79	25	



LOT 87

- BBC 272F • Feb. 24, 2018 • 2047823
- BW: 98 lbs • ACT WW: 747 lbs

RED BLAIR'S **TRUMP** 272F

RED DAMAR TRUMP C512 X RED WSF MS YANKEE 13T 12W

US BOLT EPDS

CE	BW	WW	YW	MILK	TM
•	-0.3	48	79	25	

LOT 88

- BBC 625F • Mar. 10, 2018 • 2047138
- BW: 99 lbs • ADJ WW: 698 lbs

RED BLAIR'S **TRUMP** 625F

RED DAMAR TRUMP C512 X RED WSF MS YANKEE 13T 12W

US BOLT EPDS

CE	BW	WW	YW	MILK	TM
•	-0.3	48	79	25	

LOT 89

- BBC 668F • Mar. 17, 2018 • 2118402
- BW: 97 lbs • ADJ WW: 668 lbs

RED BLAIR'S **TRUMP** 668F

RED DAMAR TRUMP C512 X RED WSF MS YANKEE 13T 12W

US BOLT EPDS

CE	BW	WW	YW	MILK	TM
•	0.4	52	82	24	

LOT 90

- BBC 558F • Feb. 27, 2018 • 2047820
- BW: 92 lbs • ADJ WW: 627 lbs

RED BLAIR'S **TRUMP** 558F

RED DAMAR TRUMP C512 X RED WSF MS YANKEE 13T 12W

US BOLT EPDS

CE	BW	WW	YW	MILK	TM
•	-0.3	48	79	25	

LOTS 86 - 90

*Full
Siblings*



Red WSF Ms Yankee 13T 12W

Kuruba



Red WCR Miss Kuruba De 2084Z

WCR Kuruba 2084Z was easily our pick from the entire Wildcat Creek Ranch dispersal. She has done nothing but impress us since the day we bought her and we were sad to see her sell in the group that went to Urban Cattle Co. Look for her genetics to have a lasting impact on programs that have invested wisely.

LOTS 91-93

Full Siblings

LOT 91

• BBC 910F • Mar. 9, 2018 • 2087260
• BW: 91 lbs • ADJ WW: 652 lbs

RED BLAIR'S TRUMP 910F

RED SOO LINE POWER EYE 161X
RED DAMAR TRUMP C512
RED DAMAR OH BABY W168

RED LAZY MC CC DETOUR 2W
RED WCR MISS KURUBA DE 2084Z
RED CROWFOOT KURUBA 4179P

RED COCKBURN RIBEYE 308U
RED TR LYNN 301R
RED FINE LINE MULBERRY 26P
RED T-S OLIVIA 706P

RED RMJ REDMAN 1T
RED LAZY MC BESS 12S
RED CROWFOOT BIG DADDY 2058M
RED CROWFOOT KURUBA 1208L

US BOLT EPDS

CE	BW	WW	YW	MILK	TM
••	-1.6	48	82	23	

LOT 92

• BBC 914F • Mar. 12, 2018 • 2087114
• BW: 83 lbs • ADJ WW: 621 lbs

RED BLAIR'S TRUMP 914F

RED DAMAR TRUMP C512 X RED WCR MISS KURUBA DE 2084Z

US BOLT EPDS

CE	BW	WW	YW	MILK	TM
••	-1.6	48	82	23	

LOT 93

• BBC 930F • Mar. 20, 2018 • 2087115
• BW: 89 lbs • ADJ WW: 641 lbs

RED BLAIR'S TRUMP 930F

RED DAMAR TRUMP C512 X RED WCR MISS KURUBA DE 2084Z

US BOLT EPDS

CE	BW	WW	YW	MILK	TM
••	-1.6	48	82	23	

LOT 94

• BBC 657F • Mar. 14, 2018 • 2033474
 • BW: 87 lbs • ADJ WW: 641 lbs

RED BLAIR'S **TRUMP** 657F

RED SOO LINE POWER EYE 161X
RED DAMAR TRUMP C512
 RED DAMAR OH BABY W168

RED HAYCOW CUTTING EDGE 055
RED BLAIRS BONITA 615B
 RED BRYLOR BONITA 205T

RED COCKBURN RIBEYE 308U
 RED TR LYNN 301R
 RED FINE LINE MULBERRY 26P
 RED T-S OLIVIA 706P

LAF LINS CUTTING EDGE 2075
 RED HAYCOW 370 PRINCESS 5002
 RED FINE LINE MULBERRY 26P
 RED BRYLOR BONITA 66K

US BOLT EPDS

CE	BW	WW	YW	MILK	TM
•	0.3	51	81	23	

LOT 95

• BBC 906F • Mar. 2, 2018 • 2084982
 • BW: 72 lbs • ADJ WW: 569 lbs

RED BLAIR'S **TRUMP** 906F

RED SOO LINE POWER EYE 161X
RED DAMAR TRUMP C512
 RED DAMAR OH BABY W168

RED WCR CAM 1Y
RED BLAIR'S CORA 767B
 RED WCR MISS CORA DE 867Z

RED COCKBURN RIBEYE 308U
 RED TR LYNN 301R
 RED FINE LINE MULBERRY 26P
 RED T-S OLIVIA 706P

RED NBAR HAMLEY S913
 RED SOO LINE COUNTESS 6409
 RED LAZY MC CC DETOUR 2W
 RED WILBAR CORA 443P

US BOLT EPDS

CE	BW	WW	YW	MILK	TM
•••	-1.9	44	70	24	

LOT 96

• BBC 920F • Mar. 3, 2018 • 2105359
 • BW: 87 lbs • ACT WW: 595 lbs

RED BLAIR'S **TRUMP** 920F

RED SOO LINE POWER EYE 161X
RED DAMAR TRUMP C512
 RED DAMAR OH BABY W168

RED HAYCOW CUTTING EDGE 055
RED RCRA STRAWBERRY 9Z
 RED RCRA STRAWBERRY 3P

RED COCKBURN RIBEYE 308U
 RED TR LYNN 301R
 RED FINE LINE MULBERRY 26P
 RED T-S OLIVIA 706P

LAF LINS CUTTING EDGE 2075
 RED HAYCOW 370 PRINCESS 5002
 RED PIE DEEP DOWN 2005
 RED RCRA STRAWBERRY 20M

US BOLT EPDS

CE	BW	WW	YW	MILK	TM
••	-0.3	49	77	26	



Red RCRA Strawberry 9Z
 Dam of 920F

Damar Doctor



Red Damar Doctor C501

As you can tell I have tremendous respect for the Damar program in Wisconsin. Damar Doc C501 is actually a full brother to Damar Trump, but he offers more calving ease. We used Doc on heifers with great success and he left us some nice daughters. Damar Doc is no longer with us, so these will be some of the last sons to sell.

LOT 97

- BBC 28F • Apr. 5, 2018 • 2032540
- BW: 86 lbs • ADJ WW: 718 lbs

RED BLAIR'S DOCTOR 28F

RED SOO LINE POWER EYE 161X
RED DAMAR DOCTOR C501
 RED DAMAR OH BABY W168

RED BRYLOR WEST JET 69W
RED SSS NELLIE 102Y
 RED SSS NELLIE 121R

RED COCKBURN RIBEYE 308U
 RED TR LYNN 301R
 RED FINE LINE MULBERRY 26P
 RED T-S OLIVIA 706P

RED FLYING K AMBUSH 6T
 RED FLYING K LASSIE 3T
 RED SSS BOOMER 803B
 RED SSS NELLIE 800L

US BOLT EPDS

CE	BW	WW	YW	MILK	TM
••	1.1	61	96	19	

LOT 98

- BBC 4F • Mar. 6, 2018 • 2050093
- BW: 80 lbs • ADJ WW: 632 lbs

RED BLAIR'S DOCTOR 4F

RED SOO LINE POWER EYE 161X
RED DAMAR DOCTOR C501
 RED DAMAR OH BABY W168

RED CORNER CREEK CASH 2R
RED BLAIR'S DYNA 128B
 RED LAURON MISS DYNA 86S

RED COCKBURN RIBEYE 308U
 RED TR LYNN 301R
 RED FINE LINE MULBERRY 26P
 RED T-S OLIVIA 706P

RED PIE ATLANTIC 2204
 RED NORTHLINE PRINCESS 59L
 RED RUNNING BAR PRONTO 26P
 RED LAURON MISS DYNA 50K

US BOLT EPDS

CE	BW	WW	YW	MILK	TM
•••	-0.9	52	82	20	

LOT 99

• BBC 11F • Mar. 25, 2018 • 2032263
• BW: 79 lbs • ADJ WW: 673 lbs

RED BLAIR'S DOCTOR 11F

RED SOO LINE POWER EYE 161X
RED DAMAR DOCTOR C501
RED DAMAR OH BABY W168

RED HAYCOW CUTTING EDGE 055
RED BLAIR'S LASS 14B
RED JCC LASS 7R

RED COCKBURN RIBEYE 308U
RED TR LYNN 301R
RED FINE LINE MULBERRY 26P
RED T-S OLIVIA 706P

LAF LINS CUTTING EDGE 2075
RED HAYCOW 370 PRINCESS 5002
RED TOWAW INTEGRITY 17M
RED JCC LASS 41N

US BOLT EPDS

CE	BW	WW	YW	MILK	TM
•••	-0.8	59	92	24	

LOT 100

• BBC 10F • Mar. 25, 2018 • 2032264
• BW: 83 lbs • ADJ WW: 668 lbs

RED BLAIR'S DOCTOR 10F

RED SOO LINE POWER EYE 161X
RED DAMAR DOCTOR C501
RED DAMAR OH BABY W168

RED NBAR HAMLEY S913
RED BLAIRS COUNTESS 41Y
RED SOO LINE COUNTESS 6409

RED COCKBURN RIBEYE 308U
RED TR LYNN 301R
RED FINE LINE MULBERRY 26P
RED T-S OLIVIA 706P

RED PIE BILLINGS 487
RED NBAR KELLY 913
RED DWAJO GLADIATOR 32L
RED JCC COUNTESS 14G

US BOLT EPDS

CE	BW	WW	YW	MILK	TM
•••	-1.2	51	78	21	

LOT 101

• BBC 560F • Feb. 28, 2018 • 2028010
• BW: 75 lbs • ADJ WW: 679 lbs

BLAIR'S DOCTOR 560F

RED SOO LINE POWER EYE 161X
RED DAMAR DOCTOR C501
RED DAMAR OH BABY W168

RED RINGSTEAD KARGO 215U
BLAIRS ROSEBUD 332Z
BEVERLY HILLS SOO ROSEBUD 714T

RED COCKBURN RIBEYE 308U
RED TR LYNN 301R
RED FINE LINE MULBERRY 26P
RED T-S OLIVIA 706P

RED RINGSTEAD KARGO 107M
RED RINGSTEAD MS EQUAL 589P
S A V 004 DENSITY 4336
PRAIRIELANE 9001 ROSEBUD 2011

CE	BW	WW	YW	MILK	TM
•••	-0.5	36	58	19	37

LOT 102

• BBC 568F • Mar. 2, 2018 • 2028498
• BW: 95 lbs • ADJ WW: 754 lbs

BLAIR'S DOCTOR 568F

RED SOO LINE POWER EYE 161X
RED DAMAR DOCTOR C501
RED DAMAR OH BABY W168

DUFF NEW GENERATION 6107
BLAIRS LANA 52X
RED WILBAR LANA 688S

RED COCKBURN RIBEYE 308U
RED TR LYNN 301R
RED FINE LINE MULBERRY 26P
RED T-S OLIVIA 706P

O C C GENESIS 872G
O C C DIXIE ERICA 814G
RED FLYING K PRINCE 302P
RED WILBAR LANA 346N

CE	BW	WW	YW	MILK	TM
•	3.0	45	77	21	44

Owned with Dale McKay

LOT 103

• BBC 524F • Feb. 15, 2018 • 2034924
• BW: 98 lbs • ADJ WW: 841 lbs

RED BLAIR'S CINCH 524F

RED PIE CINCH 4126
RED TKP CINCH 6274
RED TKP MARIGOLD 0147

RED U2 MISSION 61W
RED FREYS MISSIE 558D
RED FREYS MISSIE 546Y

RED LSF SAGA 1040Y
RED TXP BONNE BEL 110
RED VGW GAME PLAN 508
RED TKP MARIGOLD 6186

RED LJC MISSION STATEMENT P27
RED U-2 STORMY 205M
RED SIX MILE SAKIC 832S
RED FREYS MISSIE 542T

US BOLT EPDS

CE	BW	WW	YW	MILK	TM
•	1.3	72	114	19	



LOT 104

• BBC 612F • Mar. 8, 2018 • 2087257
• BW: 87 lbs • ADJ WW: 616 lbs

RED BLAIR'S SIGNATURE 612F

RED SIX MILE GRAND SLAM 130Z
RED SIX MILE SIGNATURE 295B
RED SELMA OF SIX MILE 358X

RED TER-RON TORNADO 157M
RED WILBAR CORA 443P
RED HEAD CORA 159L

RED VGW GAME PLAN 816
RED SIX MILE REBECCA 216X
RED SIX MILE UNLEASHED 595U
RED RSL MISS SELMA 384F

RED TER-RON MAMBO 28K
RED BLUE SPRUCE LARKABA 157A
RED TOWAW ZAMA 148F
RED CUMNOCK CORA 423B

US BOLT EPDS

CE	BW	WW	YW	MILK	TM
•	0	52	82	25	

LOT 105

• BBC 905F • - -
• BW: 77 lbs • ADJ WW: 605 lbs

RED BLAIR'S SIGNATURE 905F

RED SIX MILE GRAND SLAM 130Z
RED SIX MILE SIGNATURE 295B
RED SELMA OF SIX MILE 358X

RED SSS ARSON 85U
RED OTMC REBA 49A
RED MCRAE'S REBA 49W

RED VGW GAME PLAN 816
RED SIX MILE REBECCA 216X
RED SIX MILE UNLEASHED 595U
RED RSL MISS SELMA 384F

RED SSS ARSENAL 271S
RED SSS SCAARA 951L
RED 5L GUNFIRE 1173-6966
RED MCRAE'S REBA 66P

CE	BW	WW	YW	MILK	TM
•	1.7	60	92	19	

LOT 106

• BBC 710F • Mar. 28, 2018 • 2063175
• BW: 72 lbs • ADJ WW: 635 lbs

RED BLAIR'S DIRECT QUEST 710F

RED ANDRAS NEW DIRECTION R240
RED DAMAR DIRECT QUEST D694
RED BROWN MS CONQUEST Z7870

RED HAYCOW CUTTING EDGE 055
RED BLAIR'S GODEN 573B
RED PIPESTONE GOLDEN 72K

ANDRAS IN FOCUS B152
RED ANDRAS KURUBA B111
RED HXC CONQUEST 4405P
RED BROWN MS ABIGRACE L7730

LAF LINS CUTTING EDGE 2075
RED HAYCOW 370 PRINCESS 5002
RED PIPESTONE BOND 165B
RED PIPESTONE GOLDEN 37E

US BOLT EPDS

CE	BW	WW	YW	MILK	TM
•••	-3.1	42	68	31	

LOT 107

• BBC 938F • Apr. 3, 2018 • 2107149
• BW: 87 lbs • ADJ WW: 632 lbs

RED BLAIR'S SECRETARIAT 938F

RED TORA BIG KAHUNA 8030
RED RL TOP DOG
RED LCC DYNAMIC K1083

RED HILL B571 JULIAN 84S
RED RHODES 84S BELLE 106A
RED RHODES TRK BELLE Y192

RED HXC STEAKMASTER 6000S
RED TORA POLLY 6024
RED LCHMN BULLSEYE 1379G
RED RED BELLE 6024

RED BECKTON JULIAN GG B571
RED BECKTON BARMAID M554 CH
RED BUF CRK THE RIGHT KINDU199
RED BUF CRK BELLE S305

CE	BW	WW	YW	MILK	TM
••	-2.2	53	82	22	

Sim Angus Sons

Some of you may know that we have a small Simmental program and we will be selling Simmental and SimAngus bulls through this sale in the future. These bulls are the first SimAngus bulls to sell and they are both ¾ Angus and ¼ Simmental. You can buy with extreme confidence as these bulls have gone through rigid screening to qualify for the sale.

LOT 108

• BBC 564F • Mar. 1, 2018
• BW: 96 lbs • ADJ WW: 654 lbs

BLAIR'S CHALLENGER 564F

S A V BRILLIANCE 8077
ADA CHALLENGER 119C
ADA UNFORGETTABLE GIRL 1H'08

SVS CAPTAIN MORGAN 11Z
RUST MISS 5234C
WERNER BLACK ANGEL 1299

S A V BISMARCK 568Z
S A V BLACKCAP MAY 5270
B C LOOKOUT 7024
MOUNTAIN HOLLY

HARVIE JDFWALLBANGER111X
SUNNYVALLEY BLK JENNA 88U
S A V NET WORTH 4200
CLEARWATER BLACK ANGEL 395

CE	BW	WW	YW	MILK	TM
•					

LOT 109

• BBC 502F • Mar. 21, 2018
• BW: 70 lbs • ADJ WW: 685 lbs
• ¾ Angus ¼ Simmental

BLAIR'S TOMMY JACK 502F

RED SIX MILE GAME FACE 164Y
RED TWG TOMMY JACK 166A
RED DAMAR PASSION X166

COME AS U R RED ROCKET
RUST MISS 627D
KKC FOXY LADY 47Z

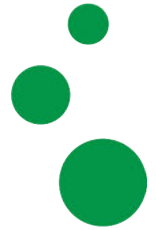
RED VGW GAME PLAN 816
RED SIX MILE LAKOTO 35W
RED FINE LINE MULBERRY 26P
RED DFRA JOPLIN 501L

MRL 130Y
MISS XCITING 14X
KUHNS BAILEY KING 7027
KKC MS. EAGLE 164R

CE	BW	WW	YW	MILK	TM
••					



DLF
PICKSEED



SEEDS & SCIENCE

Contact a Blair's team member
at the following locations to book your
2020 forage and corn seed needs.

Lanigan	306-365-3150
Nokomis	306-528-3150
Watrous	306-946-3150
Liberty	306-847-4444
Strongfield	306-867-2225
Rosthern	306-232-4394
Lipton	306-336-2260
McLean	306-699-2822



Semen Available



Red TWG Tommy Jack 166A

- \$75/Straw.
- Owned with Brylor Ranch & Timber Creek
- Heifer Safe
- Contact us for commercial pricing



• IMP 0166A • Nov. 19, 2013 • 1944044



• RSTD 215U • Feb. 22, 2008 • 1476947
• BW: 90 lbs • ADJ WW: 809 lbs

RED TWG **TOMMY JACK** 166A

RED RINGSTEAD **KARGO** 215U

RED VGW GAME PLAN 816
RED SIX MILE GAME FACE 164Y
RED SIX MILE LAKOTO 35W

RED VGW GAME PLAN 508
RED VGW TW DOLL 0270
RED LAZY MC SMASH 41N
RED STEWART LAKOTO 612S

RED FINE LINE MULBERRY 26P
RED DAMAR PASSION X166
RED DFRA JOPLIN 501L

RED COMPASS MULBERRY 449M
RED DUS FAYETTE 8G
RED BJR MONU 4X-303
RED BJR JOPLIN 6232-3246

RED COMPASS KARGO 83K
RED RINGSTEAD KARGO 107M
RED GET-A-LONG MRS. YOUNG 095

RED BADLANDS BONUS 702
BLACK SSS MISS NEW QUICK 208E
RED GET-A-LONG GOLD MEDAL 7106
RED GET-A-LONG MRS YOUNG 4213

RED SSS YUKON 440K
RED RINGSTEAD MS EQUAL 589P
RED SSS MISS EQUAL 495G

RED BJR RAMBLER 5162
RED SSS PRINCESS 15H
RED LCHMN NO EQUAL 1174D
RED SSS MISS STRETCH 264E

CE	BW	WW	YW	MILK	TM
	1.4	39	61	18	38

CE	BW	WW	YW	MILK	TM
	2.4	45	62	17	40

Semen Available



Red Ringstead Kargo 215U

- \$85/Straw
- Limited Supply
- Canada Only
- Heifer Safe
- Contact us for commercial pricing



- \$65/Straw
- Owned with Six Mile Ranch
- Heifer Safe
- Contact us for commercial pricing



• SIXM 94D • Feb. 19, 2016 • 1931953
 • BW: 84 lbs • ADJ WW: 820 lbs



• IMP 5740C • Feb. 22, 2015 • 1954707

SIX MILE **DESERT STORM** 94D

S A V **NATIONAL ANTHEM** 5740

S TITLEST 1145
 BAR-H CROSSFIRE 63A
 HF TIBBIE 93U

 S A V HEAVY HITTER 6347
 SIX MILE FALLING STAR 219Y
 ROSE HILL DARK STAR 22P

RA LINCOLN W144
 S CORA 572
 S A V 004 PREDOMINANT 4438
 HF TIBBIE 35K

 S A V 8180 TRAVELER 004
 S A V BESSIE HEIRESS 1184
 ROSE HILL FAME 4K
 ROSE HILL DARK STAR 31H

S A V HARVESTOR 0338
 S A V INTERNATIONAL 2020
 S A V EMBLYNETTE 5483

 CAR TRACKER 305
 A C DUKE GIRL 57
 A C DUKE GIRL 330

S A V HERITAGE 6295
 S A V EMBLYNETTE 774
 S A V 8180 TRAVELER 004
 S A V EMBLYNETTE 7260

 CAR TRACKER 904
 C A R MISS JULIE 643
 C T MINER 308
 A C DUKE GIRL 618

CE	BW	WW	YW	MILK	TM
	1.6	65	117	23	56

CE	BW	WW	YW	MILK	TM
	3.6	54	98	32	59



- 10 packages available for 2020
- 20 straws for \$1,200
- Contact us for commercial pricing

Notes

Blairs.Ag Influence

Commercial Heifer Sale

December 15, 2020

Johnstones Auction, Moose Jaw, SK

200

RED AND BLACK ANGUS
INFLUENCED BRED FEMALES
SELL FROM BLAIRS.AG...

HEIFERS CARRYING
BLAIR'S GENETICS SELL



Kevin & Noreen Blair
Darren & Deb Blair
Lanigan, SK Canada
www.blairscattleco.com

Kevin Blair	306.365.7922	kevin@blairs.ag
Blake MacMillan	306.528.7484	bmacmillan@blairs.ag
Scott Johnstone	306.631.0767	Johnstone Auction Mart

Return Undeliverable
Canadian Addresses To:
T Bar C Cattle Co. Ltd.
Box 2330
Warman, Saskatchewan S0K 4S0

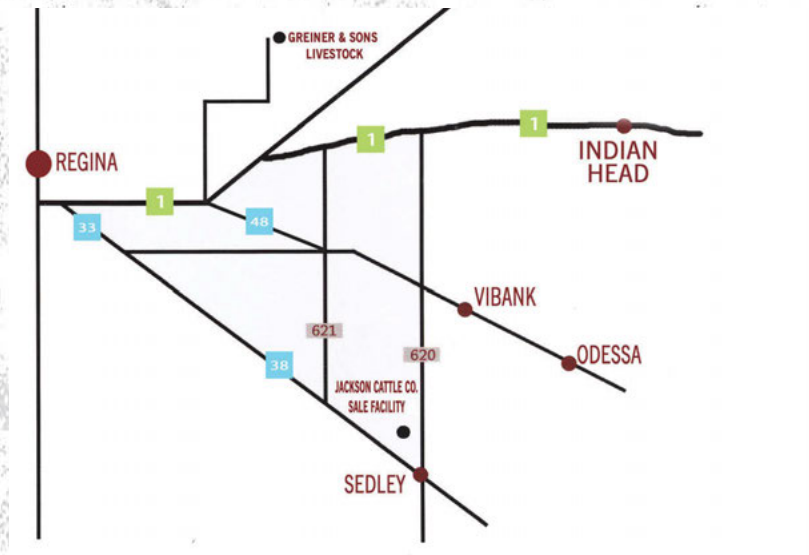


Join us in Sedley, Saskatchewan

JACKSON CATTLE CO. SALE FACILITY

Box 159, Sedley, SK S0G 4K0
Sale Barn: 306.885.4418
Levi's Cell: 306.537.9251

From Sedley: Go 4 miles north on 620, then 1/2 mile west and 1/2 mile back north.



CREATED BY

